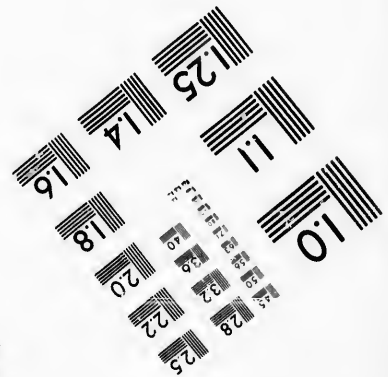
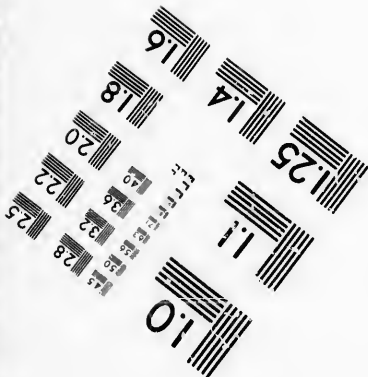
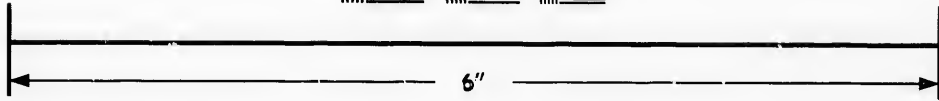
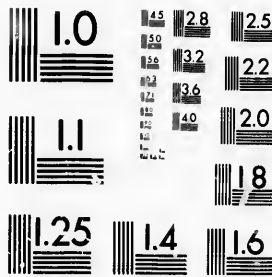


**IMAGE EVALUATION  
TEST TARGET (MT-3)**



**Photographic  
Sciences  
Corporation**

23 WEST MAIN STREET  
WEBSTER, N.Y. 14580  
(716) 872-4503

15 28  
23 32 25  
38 22  
20  
18

**CIHM/ICMH  
Microfiche  
Series.**

**CIHM/ICMH  
Collection de  
microfiches.**



Canadian Institute for Historical Microreproductions / Institut canadien de microreproductions historiques

11  
10  
15

**© 1985**

Technical and Bibliographic Notes/Notes techniques et bibliographiques

The Institute has attempted to obtain the best original copy available for filming. Features of this copy which may be bibliographically unique, which may alter any of the images in the reproduction, or which may significantly change the usual method of filming, are checked below.

L'Institut a microfilmé le meilleur exemplaire qu'il lui a été possible de se procurer. Les détails de cet exemplaire qui sont peut-être uniques du point de vue bibliographique, qui peuvent modifier une image reproduite, ou qui peuvent exiger une modification dans la méthode normale de filmage sont indiqués ci-dessous.

- |  |  |
|--|--|
| <input checked="" type="checkbox"/> Coloured covers/<br>Couverture de couleur  | <input type="checkbox"/> Coloured pages/<br>Pages de couleur   |
| <input type="checkbox"/> Covers damaged/<br>Couverture endommagée  | <input type="checkbox"/> Pages damaged/<br>Pages endommagées   |
| <input type="checkbox"/> Covers restored and/or laminated/<br>Couverture restaurée et/ou pelliculée  | <input type="checkbox"/> Pages restored and/or laminated/<br>Pages restaurées et/ou pelliculées  |
| <input type="checkbox"/> Cover title missing/<br>Le titre de couverture manque   | <input checked="" type="checkbox"/> Pages discoloured, stained or foxed/<br>Pages décolorées, tachetées ou piquées   |
| <input type="checkbox"/> Coloured maps/<br>Cartes géographiques en couleur   | <input checked="" type="checkbox"/> Pages detached/<br>Pages détachées   |
| <input type="checkbox"/> Coloured ink (i.e. other than blue or black)/<br>Encre de couleur (i.e. autre que bleue ou noire)   | <input checked="" type="checkbox"/> Showthrough/<br>Transparence   |
| <input type="checkbox"/> Coloured plates and/or illustrations/<br>Planches et/ou illustrations en couleur  | <input type="checkbox"/> Quality of print varies/<br>Qualité inégale de l'impression   |
| <input type="checkbox"/> Bound with other material/<br>Relié avec d'autres documents   | <input type="checkbox"/> Includes supplementary material/<br>Comprend du matériel supplémentaire   |
| <input type="checkbox"/> Tight binding may cause shadows or distortion<br>along interior margin/<br>La reliure serrée peut causer de l'ombre ou de la<br>distorsion le long de la marge intérieure   | <input type="checkbox"/> Only edition available/<br>Seule édition disponible   |
| <input type="checkbox"/> Blank leaves added during restoration may<br>appear within the text. Whenever possible, these<br>have been omitted from filming/<br>Il se peut que certaines pages blanches ajoutées<br>lors d'une restauration apparaissent dans le texte,<br>mais, lorsque cela était possible, ces pages n'ont<br>pas été filmées. | <input type="checkbox"/> Pages wholly or partially obscured by errata<br>slips, tissues, etc., have been refilmed to<br>ensure the best possible image/<br>Les pages totalement ou partiellement<br>obscurcies par un feuillet d'errata, une pelure,<br>etc., ont été filmées à nouveau de façon à<br>obtenir la meilleure image possible. |
| <input type="checkbox"/> Additional comments:/<br>Commentaires supplémentaires:  |  |

This item is filmed at the reduction ratio checked below/  
Ce document est filmé au taux de réduction indiqué ci-dessous.

10X	14X	18X	22X	26X	30X
<input type="checkbox"/>	<input type="checkbox"/>	<input checked="" type="checkbox"/>	<input type="checkbox"/>	<input type="checkbox"/>	<input type="checkbox"/>
12X	16X	20X	24X	28X	32X

The copy filmed here has been reproduced thanks to the generosity of:

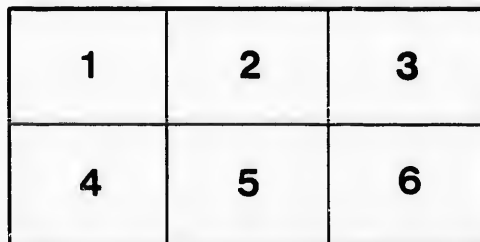
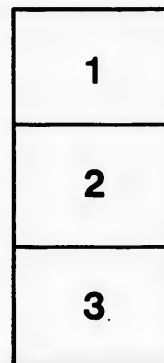
Législature du Québec  
Québec

The images appearing here are the best quality possible considering the condition and legibility of the original copy and in keeping with the filming contract specifications.

Original copies in printed paper covers are filmed beginning with the front cover and ending on the last page with a printed or illustrated impression, or the back cover when appropriate. All other original copies are filmed beginning on the first page with a printed or illustrated impression, and ending on the last page with a printed or illustrated impression.

The last recorded frame on each microfiche shall contain the symbol → (meaning "CONTINUED"), or the symbol ∇ (meaning "END"), whichever applies.

Maps, plates, charts, etc., may be filmed at different reduction ratios. Those too large to be entirely included in one exposure are filmed beginning in the upper left hand corner, left to right and top to bottom, as many frames as required. The following diagrams illustrate the method:



L'exemplaire filmé fut reproduit grâce à la générosité de:

Législature du Québec  
Québec

Les images suivantes ont été reproduites avec le plus grand soin, compte tenu de la condition et de la netteté de l'exemplaire filmé, et en conformité avec les conditions du contrat de filmage.

Les exemplaires originaux dont la couverture en papier est imprimée sont filmés en commençant par le premier plat et en terminant soit par la dernière page qui comporte une empreinte d'impression ou d'illustration, soit par le second plat, selon le cas. Tous les autres exemplaires originaux sont filmés en commençant par la première page qui comporte une empreinte d'impression ou d'illustration et en terminant par la dernière page qui comporte une telle empreinte.

Un des symboles suivants apparaîtra sur la dernière image de chaque microfiche, selon le cas: le symbole → signifie "A SUIVRE", le symbole ∇ signifie "FIN".

Les cartes, planches, tableaux, etc., peuvent être filmés à des taux de réduction différents. Lorsque le document est trop grand pour être reproduit en un seul cliché, il est filmé à partir de l'angle supérieur gauche, de gauche à droite, et de haut en bas, en prenant le nombre d'images nécessaire. Les diagrammes suivants illustrent la méthode.

*With Dr. Ross's  
Compliments*

A

7

CLASSIFIED CATALOGUE

OF THE

LEPIDOPTERA OF CANADA,

BY

ALEXANDER MILTON ROSS,

M.D., M.A., M.R.S.L., ENG.

MEMBER OF THE ENTOMOLOGICAL SOCIETIES OF ENGLAND, BELGIUM, AND  
CANADA, CORRESPONDING MEMBER OF THE AMERICAN ENTOMOLOGICAL  
SOCIETY, UNITED STATES, MEMBER OF THE LINNEAN SOCIETY OF  
BELGIUM, AUTHOR OF "THE BIRDS OF CANADA," ETC.

---

TORONTO:

ROWSSELL AND HUTCHISON,

1872.



A

CLASSIFIED CATALOGUE

OF THE

LEPIDOPTERA OF CANADA,

BY

ALEXANDER MILTON ROSS,

M.D., M.A., M.R.S.L., ENG.

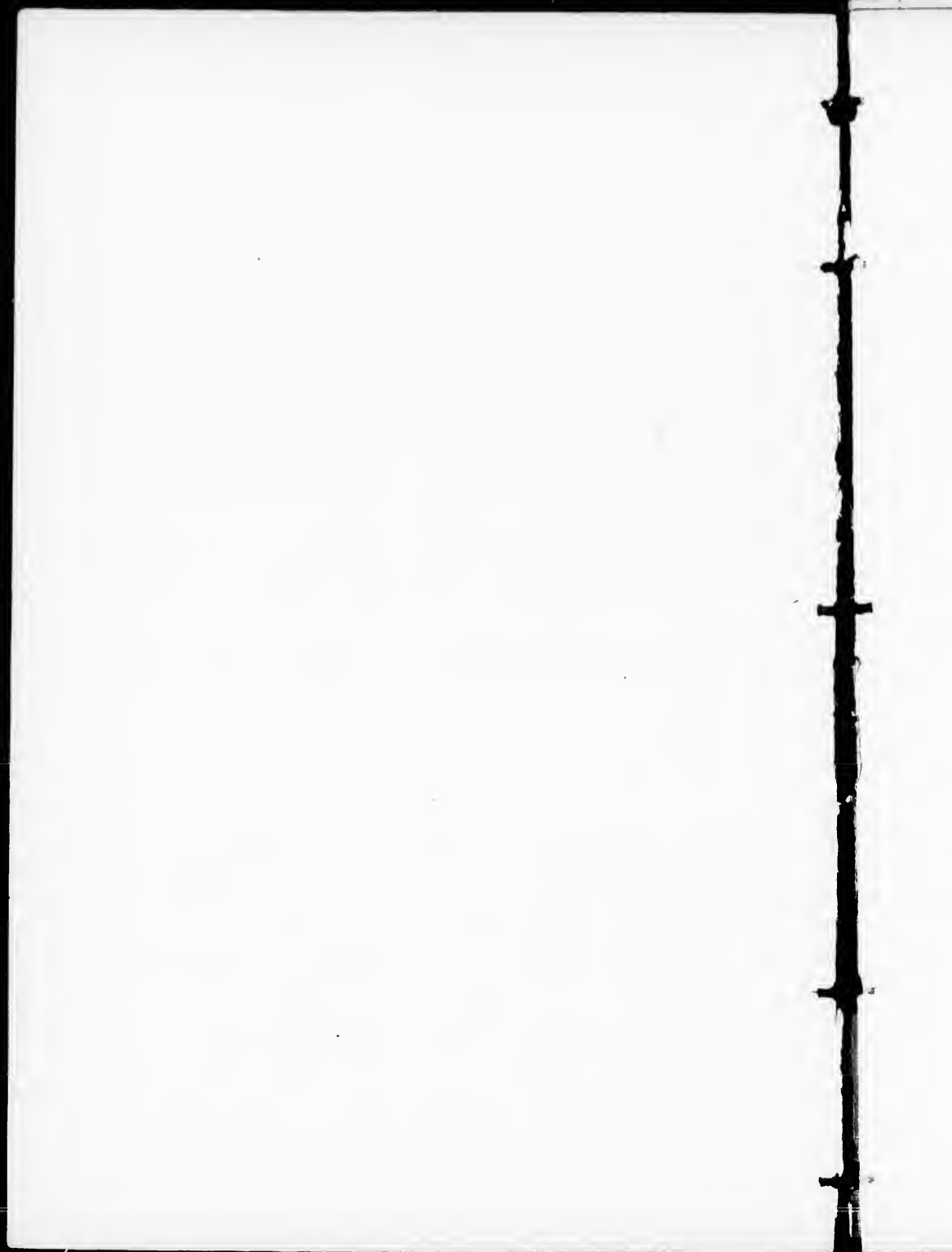
MEMBER OF THE ENTOMOLOGICAL SOCIETIES OF ENGLAND, BELGIUM, AND  
CANADA, CORRESPONDING MEMBER OF THE AMERICAN ENTOMOLOGICAL  
SOCIETY, UNITED STATES, MEMBER OF THE LINNEAN SOCIETY OF  
BELGIUM, AUTHOR OF "THE BIRDS OF CANADA," ETC.

---

TORONTO :

ROWSSELL AND HUTCHISON,

1872.





# LEPIDOPTERA OF CANADA.

## PAPILIONIDÆ.

Genus: *Papilio*.

*Papilio* Turnus.

“ Asterias.

“ Troilus.

“ breviconda.

Genus: *Pieris*.

*Pieris* oleracea.

Genus: *Colias*.

*Colias* philodice.

Genus: *Limenitis*.

*Limenitis* misippus.

“ ephestion.

“ arthemis.

Genus: *Danais*.

*Danais* archippus.

Genus: *Grapta*.

*Grapta* interrogationis

“ comma.

“ c-argenteum.

Genus: *Junonia*.

*Junonia* cænia.

Genus: *Argynnis*.

*Argynnis* idalia.

“ aphrodite.

“ Bellona.

“ Myrina.

Genus: *Melitæ*.

*Melitæ* phæton.

“ Pharos.

Genus: *Cynthia*.

*Cynthia* cardui.

“ Huntera.

“ atalanta.

“ Lavinia.

Genus: *Vanessa*.

*Vanessa* antiopa.

“ j-album.

“ Milbertii.

Genus: *Hesperia*.

*Hesperia* Hobomok.

“ Leonardus.

“ Sassacus.

“ Peckius.

“ Metacomet.

## PAPILIONIDÆ.—Continued.

Hesperia Ahaton.	Polyommatus Pseu-
" Wamsutta.	dargiolus.
Genus: <i>Hipparchia</i> .	Genus: <i>Thecla</i> .
Hipparchia alope.	Thecla Falacer.
" Boisduvallii.	" strigosa.
" Eurytris.	" Humulii.
Genus: <i>Chrysophanes</i> .	" Niphon.
Chrysophanes Ame-	" Liparops.
ricanæ.	" mopsus.
Genus: <i>Lycæna</i> .	Genus: <i>Thanaos</i> .
Lycæna Epixanthe.	Thanaos juvenalis.
" Americana.	" brizo.
Genus: <i>Polyommatus</i> .	Genus: <i>Eudamus</i> .
Polyommatus Lucia.	Eudamus tityrus.
" Comyntas.	" bathyllus.

## SPHINGIDÆ.

Genus: <i>Sphinx</i> .	Genus: <i>Philampelus</i> .
Sphinx Gordius.	Philampelus Achemon.
" Carolina.	" satellitia.
" cinerea.	" vitis.
" cnotus.	Genus: <i>Smerinthus</i> .
" coniferarum.	Smerinthus excæcata.
" drupiferarum	" Juglandis.
" Hylæus.	" myops.
" Kalmiæ.	Genus: <i>Lepisesia</i> .
" Myron.	Lepisesia flavofasciata
" quinquémac-	
ulatus.	

## SPHINGIDÆ.—Continued.

Genus: <i>Ceratomia</i> .	<i>Ægeria</i> exitiosa.
<i>Ceratomia</i> quadricornis.	“ polistiformis.
	“ pyri.
Genus: <i>Ægeriade</i> .	“ quinque-caudata.
<i>Ægeria</i> caudata.	“ tipuliforme.

## PHALÆNÆ.

Genus: <i>Actias</i> .	<i>Arctia</i> Rubricosa.
<i>Actias</i> Luna.	“ Virginica.
“ * <i>Rossii</i> .	“ virgo.
	“ Caja.
Genus: <i>Attacus</i> .	“ textor.
<i>Attacus</i> Cecropia.	“ phalerata.
“ Polyphemus.	“ Arge.
“ Prometheus.	“ <i>Acraea</i> .
Genus: <i>Bombyces</i> .	Genus: <i>Callimorpha</i> .
<i>Bombyx</i> cossus.	<i>Callimorpha</i> militaris.
“ gratæ.	“ Carolina.
“ mori.	“ Lecontei.
Genus: <i>Arctia</i> .	Genus: <i>Lophocampa</i> .
<i>Arctia</i> Americana.	<i>Lophocampa</i> maculata.
“ Isabella.	“ tessellaris.
“ luctifera.	
“ punctatissima.	

\* *Actias* "*Rossii*."—I am satisfied this is a new species. The three specimens in my collection I obtained in a grove of maple, birch, and oak, near Toronto. The male is pure white and expands three and a half inches; the female is white, with a light yellowish tinge. In form and marking, this moth closely resembles *Actias* *Luna*. In my work on "The Butterflies and Moths of Canada," a full description of this beautiful insect is given.

## PHALÆNÆ.—Continued.

- |                                     |                              |
|-------------------------------------|------------------------------|
| Genus: <i>Orgyia</i> .              | Genus: <i>Notodonta</i> .    |
| <i>Orgyia antiqua</i> .             | <i>Notodonta unicornis</i> . |
| " <i>leucostigma</i> .              |                              |
| Genus: <i>Gastropacha</i> .         | Genus: <i>Eudryas</i> .      |
| <i>Gastropacha Americana</i> .      | <i>Eudryas grata</i> .       |
|                                     | " <i>unio</i> .              |
| Genus: <i>Saturnia</i> .            | Genus: <i>Pygæra</i> .       |
| <i>Saturnia Io</i> .                | <i>Pygæra ministræ</i> .     |
| " <i>Maia</i> .                     | Genus: <i>Clostera</i> .     |
| " <i>Hera</i> .                     | <i>Clostera inclusa</i> .    |
| Genus: <i>Ceratocampa</i> .         | " <i>anastomosis</i> .       |
| <i>Ceratocampa regalis</i> .        | " <i>Americana</i> .         |
| Genus: <i>Dryocampa</i> .           | Genus: <i>Agrotis</i> .      |
| <i>Dryocampa imperialis</i> .       | <i>Agrotis devastator</i> .  |
| " <i>senatoria</i> .                | " <i>tessellata</i> .        |
| " <i>stigma</i> .                   | " <i>suffusa</i> .           |
| " <i>rubicunda</i> .                | " <i>latens</i> .            |
| " <i>pellucida</i> .                | " <i>inermis</i> .           |
|                                     | " <i>tritici</i> .           |
| Genus: <i>Hepiolus</i> .            | " <i>Æqua</i> .              |
| <i>Hepiolus argenteomaculatus</i> . | " <i>Cochranii</i> .         |
| " <i>humulii</i> .                  | Genus: <i>Mamestradæ</i> .   |
|                                     | <i>Mamestra picta</i> .      |
| Genus: <i>Xyleutes</i> .            | Genus: <i>Geometra</i> .     |
| <i>Xyleutis cossus</i> .            | <i>Geometra iridaria</i> .   |
| " <i>Robinæ</i> .                   |                              |

## PHALÆNÆ.—Continued.

Genus: <i>Phalæna</i> .	Genus: <i>Lycomorpha</i> .
<i>Phalæna vernata</i> .	<i>Lycomorpha Pholus</i> .
" <i>anastomosis</i>	Genus: <i>Hypoprepia</i> .
" <i>brumata</i> .	<i>Hypoprepia Fucosa</i> .
Genus: <i>Hybernia</i> .	Genus: <i>Crocota</i> .
<i>Hybernia tiliaria</i> .	<i>Crocota Ferruginosa</i> .
Genus: <i>Noctua</i> .	Genus: <i>Utetheisa</i> .
<i>Noctua devastator</i> .	<i>Utetheisa Bella</i> .
" <i>clandestina</i> .	
Genus: <i>Pyralis</i> .	Genus: <i>Euclea</i> .
<i>Pyralis farinalis</i> .	<i>Euclea Monitor</i> .
Genus: <i>Carpocapsa</i> .	Genus: <i>Empretia</i> .
<i>Carpocapsa pomonella</i>	<i>Empretia stimulea</i> .
Genus: <i>Melittia</i> .	Genus: <i>Thyridopteryx</i> .
<i>Melittia cucurbitæ</i> .	<i>Thyridopteryx nigri-</i>
	<i>cans</i> .
Genus: <i>Alypia</i> .	Genus: <i>Limacodes</i> .
<i>Alypia octo-macu-</i>	<i>Limacodes scapha</i> .
<i>lata</i> .	
Genus: <i>Psychomapha</i> .	Genus: <i>Psyche</i> .
<i>Psychomapha epime-</i>	<i>Psyche helix</i> .
<i>nus</i> .	
Genus: <i>Pyromorpha</i> .	Genus: <i>Perophora</i> .
<i>Pyromorpha dimi-</i>	<i>Perophora Melsheim-</i>
<i>diata</i> .	<i>crii</i> .

## PHALÆNÆ.—Continued.

- |  |  |
|--|--|
| Genus: <i>Platipterix</i> .<br>Platipterix geniculata.       | Genus: <i>Nematocampa</i> .<br>Nematocampa filamentaria.       |
| Genus: <i>Brephos</i> .<br>Brephos infans.                   | Genus: <i>Abraxas</i> .<br>Abraxas ribearia.                   |
| Genus: <i>Catocala</i> .<br>Catocala piatrix.<br>" ultronia. | Genus: <i>Ennomos</i> .<br>Ennomos magnaria.<br>" subsignaria. |
| Genus: <i>Drasteria</i> .<br>Drasteria crechtea.             | Genus: <i>Amphidasys</i> .<br>Amphidasys cognataria.           |
| Genus: <i>Chærodes</i> .<br>Chærodes transversata.           | Genus: <i>Boarmia</i> .<br>Boarmia gnopharia.                  |
| Genus: <i>Angerona</i> .<br>Angerona crocataria.             | Genus: <i>Zerene</i> .<br>Zerene catenaria.                    |
| Genus: <i>Endropia</i> .<br>Endropia tigrinaria.             | Genus: <i>Cidaria</i> .<br>Cidaria diversilineata.             |
| Genus: <i>Metrocampa</i> .<br>Metrocampa perlata.            | Genus: <i>Aphomia</i> .<br>Aphomia colonella.                  |
| Genus: <i>Ellopia</i> .<br>Ellopia flagitiaria.              | Genus: <i>Botys</i> .<br>Botys verticalis.<br>" citrina        |
| Genus: <i>Caberodes</i> .<br>Caberodes metrocamparia.        | Genus: <i>Pempelia</i> .<br>Pempelia semirubella.              |

PHALÆNÆ.—Continued.

Genus: *Crambus*.  
*Crambus mutabilis*.

Genus: *Galleria*.  
*Galleria cereana*.

Genus: *Antithesia*.  
*Antithesia biparti-*  
*tana*.

Genus: *Lozotænia*.  
*Lozotænia fragariana*.  
" *rosaceana*.

Genus: *Halonota*.  
*Halonota simulana*.

Genus: *Anchylopera*.  
*Anchylopera spireæ*  
*foliana*.  
" *vacciniana*.  
" *fragariæ*.

Genus: *Tinea*.  
*Tinea vestianella*.  
" *tapetzella*.  
" *pellionella*.  
" *crinella*.  
" *granella*.  
" *destructor*.  
" *flavifrontella*.



