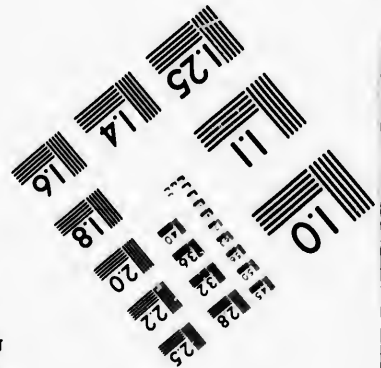
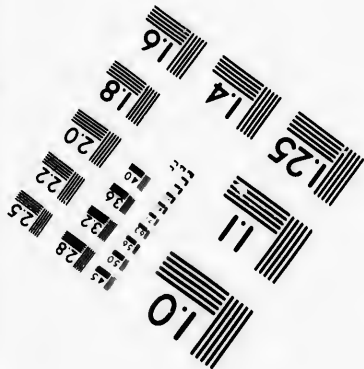
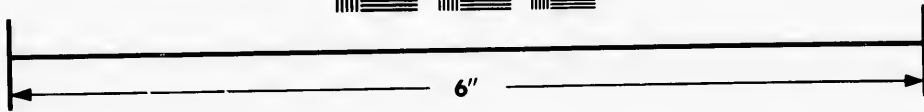
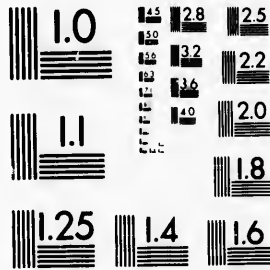


**IMAGE EVALUATION  
TEST TARGET (MT-3)**



**Photographic  
Sciences  
Corporation**

23 WEST MAIN STREET  
WEBSTER, N.Y. 14580  
(716) 872-4503

**CIHM/ICMH  
Microfiche  
Series.**

**CIHM/ICMH  
Collection de  
microfiches.**



Canadian Institute for Historical Microreproductions / Institut canadien de microreproductions historiques

**© 1981**

Technical and Bibliographic Notes/Notes techniques et bibliographiques

The Institute has attempted to obtain the best original copy available for filming. Features of this copy which may be bibliographically unique, which may alter any of the images in the reproduction, or which may significantly change the usual method of filming, are checked below.

L'Institut a microfilmé le meilleur exemplaire qu'il lui a été possible de se procurer. Les détails de cet exemplaire qui sont peut-être uniques du point de vue bibliographique, qui peuvent modifier une image reproduite, ou qui peuvent exiger une modification dans la méthode normale de filmage sont indiqués ci-dessous.

- Coloured covers/  
Couverture de couleur
- Covers damaged/  
Couverture endommagée
- Covers restored and/or laminated/  
Couverture restaurée et/ou pelliculée
- Cover title missing/  
Le titre de couverture manque
- Coloured maps/  
Cartes géographiques en couleur
- Coloured ink (i.e. other than blue or black)/  
Encre de couleur (i.e. autre que bleue ou noire)
- Coloured plates and/or illustrations/  
Planches et/ou illustrations en couleur
- Bound with other material/  
Relié avec d'autres documents
- Tight binding may cause shadows or distortion along interior margin/  
La reliure serrée peut causer de l'ombre ou de la distorsion le long de la marge intérieure
- Blank leaves added during restoration may appear within the text. Whenever possible, these have been omitted from filming/  
Il se peut que certaines pages blanches ajoutées lors d'une restauration apparaissent dans le texte, mais, lorsque cela était possible, ces pages n'ont pas été filmées.
- Additional comments:  
Commentaires supplémentaires:

Binder's title.

- Coloured pages/  
Pages de couleur
- Pages damaged/  
Pages endommagées
- Pages restored and/or laminated/  
Pages restaurées et/ou pelliculées
- Pages discoloured, stained or foxed/  
Pages décolorées, tachetées ou piquées
- Pages detached/  
Pages détachés
- Showthrough/  
Transparence
- Quality of print varies/  
Qualité inégale de l'impression
- Includes supplementary material/  
Comprend du matériel supplémentaire
- Only edition available/  
Seule édition disponible
- Pages wholly or partially obscured by errata slips, tissues, etc., have been refilmed to ensure the best possible image/  
Les pages totalement ou partiellement obscurcies par un feuillet d'errata, une pelure, etc., ont été filmées à nouveau de façon à obtenir la meilleure image possible.

This item is filmed at the reduction ratio checked below/  
Ce document est filmé au taux de réduction indiqué ci-dessous.

10X	12X	14X	16X	18X	20X	22X	24X	26X	28X	30X	32X
<input type="checkbox"/>	<input type="checkbox"/>	<input type="checkbox"/>	<input type="checkbox"/>	<input type="checkbox"/>	<input type="checkbox"/>	<input type="checkbox"/>	<input type="checkbox"/>	<input type="checkbox"/>	<input type="checkbox"/>	<input checked="" type="checkbox"/>	<input type="checkbox"/>

The copy filmed here has been reproduced thanks to the generosity of:

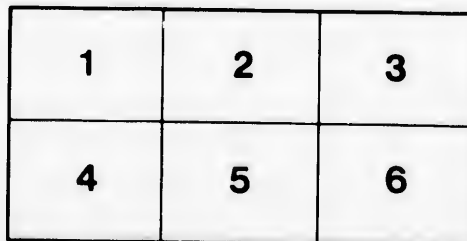
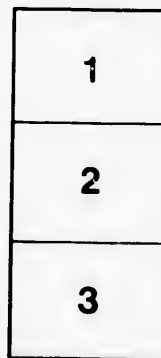
Library Division  
Provincial Archives of British Columbia

The images appearing here are the best quality possible considering the condition and legibility of the original copy and in keeping with the filming contract specifications.

Original copies in printed paper covers are filmed beginning with the front cover and ending on the last page with a printed or illustrated impression, or the back cover when appropriate. All other original copies are filmed beginning on the first page with a printed or illustrated impression, and ending on the last page with a printed or illustrated impression.

The last recorded frame on each microfiche shall contain the symbol  $\rightarrow$  (meaning "CONTINUED"), or the symbol  $\nabla$  (meaning "END"), whichever applies.

Maps, plates, charts, etc., may be filmed at different reduction ratios. Those too large to be entirely included in one exposure are filmed beginning in the upper left hand corner, left to right and top to bottom, as many frames as required. The following diagrams illustrate the method:



L'exemplaire filmé fut reproduit grâce à la générosité de:

Library Division  
Provincial Archives of British Columbia

Les images suivantes ont été reproduites avec le plus grand soin, compte tenu de la condition et de la netteté de l'exemplaire filmé, et en conformité avec les conditions du contrat de filmage.

Les exemplaires originaux dont la couverture en papier est imprimée sont filmés en commençant par le premier plat et en terminant soit par la dernière page qui comporte une empreinte d'impression ou d'illustration, soit par le second plat, selon le cas. Tous les autres exemplaires originaux sont filmés en commençant par la première page qui comporte une empreinte d'impression ou d'illustration et en terminant par la dernière page qui comporte une telle empreinte.

Un des symboles suivants apparaîtra sur la dernière image de chaque microfiche, selon le cas: le symbole  $\rightarrow$  signifie "A SUIVRE", le symbole  $\nabla$  signifie "FIN".

Les cartes, planches, tableaux, etc., peuvent être filmés à des taux de réduction différents. Lorsque le document est trop grand pour être reproduit en un seul cliché, il est filmé à partir de l'angle supérieur gauche, de gauche à droite, et de haut en bas, en prenant le nombre d'images nécessaire. Les diagrammes suivants illustrent la méthode.

11

CAL

I

The  
public o  
now arr  
the prom  
enterpri

The

The  
paid on  
on the 1  
call at a  
out three

The  
a genera

Sub  
shall be  
be called  
the Band

The  
ments, u  
prove a  
legitimat

The  
Office at  
warrant,

13  
19

THE  
**COLONIAL BANK**  
 OF  
**BRITISH COLUMBIA.**  
 [LIMITED.]

---

CAPITAL, - - - - - \$250,000.  
 IN 2500 SHARES OF \$100 EACH, WITH POWER TO INCREASE.

---

The want of Banking accommodation by the Merchants, Miners, and the general public of British Columbia has long been severely felt, and it is thought that the time has now arrived when the business of the Colony calls for a permanent Bank of its own; and the promoters of this scheme, having full confidence in the public spirit and commercial enterprise of the inhabitants of British Columbia, beg as a remedy to propose,

That a Bank under the above title be established in New Westminster,

That the Capital be \$250,000, in 2500 shares of \$100 each, a deposit of \$10 to be paid on each share on the 1st of February, 1863, on the 1st of August, 1863, and \$10 on the 1st of February, 1864, the remainder to be at the call of the Directors—but no call at any time to exceed 10 per cent of the amount subscribed, nor to be enforced without three months notice, nor more than two calls to be made in any one year.

The affairs of the Bank to be managed by a Board of Directors chosen annually at a general meeting of the shareholders.

Subscription Books to be opened at once, and whenever a sufficient number of names shall be subscribed to fulfil the requirements of the existing laws, a general meeting to be called for the election of Directors, the making of Bye-Laws for the government of the Bank, and the transaction of such other business as may be deemed necessary.

The business of the Bank would embrace the usual transactions of such establishments, and in addition, the purchase of gold in Dust and in Bars, which last branch would prove a very great benefit to miners and traders, and in return yield a handsome and legitimate profit to the shareholders.

The operations of the Bank would, in the first instance, be confined to the General Office at New Westminster, and in due course of time, as the extension of business should warrant, branch offices would be established in the different up-country towns.

It v  
vantages  
subsequ  
its own  
Foreign  
tion in t

The  
in the C  
motors o  
of the i  
promote

Ap  
Westmin  
be close

The  
obtain s  
meeting

GENTLE

BANK of

To the Pro

It would be almost useless to lay before the public of British Columbia the many advantages afforded by having in the Colony a Bank of its own, where the Head Office and subsequent branches would be in the Colony, where the share-list would be composed of its own Colonists, and where the profits arising therefrom instead of being remitted to Foreign Shareholders would be handed over to residents, and be again placed in circulation in the Colony.

The profits arising from the establishments, under somewhat similar circumstances in the Colonies of Canada, Australia and New Zealand, have been large, and the promoters of this purely Colonial undertaking earnestly beg the co-operation and assistance of the inhabitants of the Colony, convinced that by so doing they will at the same time promote the public good and their own interests.

Applications for shares to be made to the Provisional Managing Committee, New Westminster, and will be received up to the 5th of January, 1863, when the lists will be closed.

The following gentlemen have been elected as a Provisional Managing Committee to obtain subscribers, and when a sufficient number shall be obtained, to call a general meeting for the election of Directors and other business.

HENRY HOLBROOK, ESQ.,

JOHN COOPER, ESQ.,

F. G. CLAUDET, ESQ.

## FORM OF APPLICATION.

GENTLEMEN,—

I beg you will allot me  
 BANK of British Columbia, (limited.)

shares in the COLONIAL

To the Provisional Managing Committee, }  
 New Westminster. }



