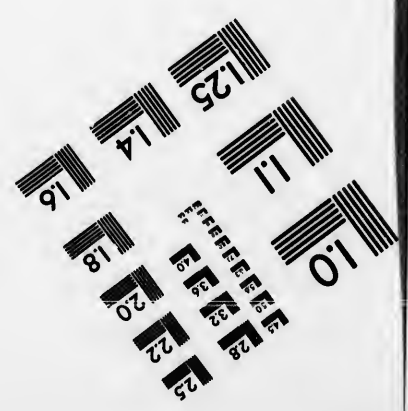
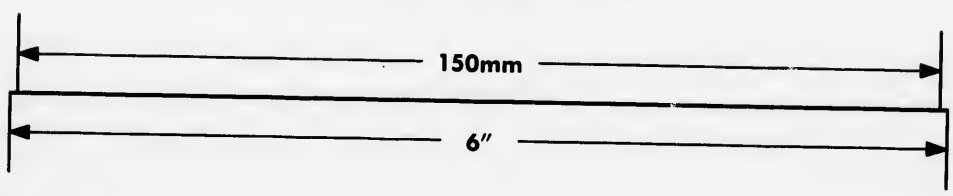
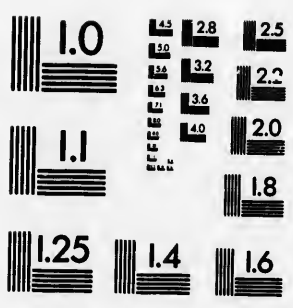
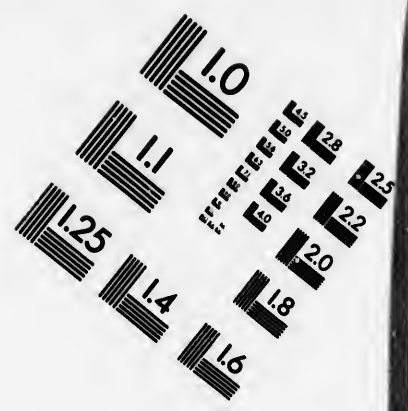
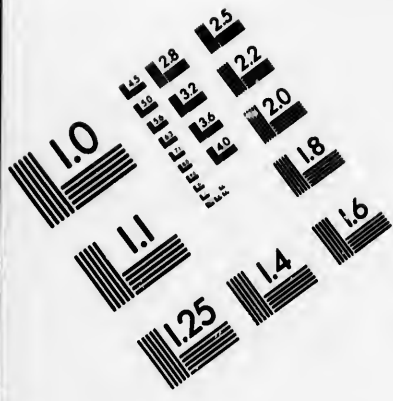


IMAGE EVALUATION TEST TARGET (MT-3)



APPLIED IMAGE, Inc
 1653 East Main Street
 Rochester, NY 14609 USA
 Phone: 716/482-0300
 Fax: 716/288-5989

© 1993, Applied Image, Inc., All Rights Reserved

10
16
18
20
22
25
28
32

**CIHM
Microfiche
Series
(Monographs)**

**ICMH
Collection de
microfiches
(monographies)**



Canadian Institute for Historical Microreproductions / Institut canadien de microreproductions historiques

10
16
18
20
22
25
28
32

© 1994

Technical and Bibliographic Notes / Notes techniques et bibliographiques

The Institute has attempted to obtain the best original copy available for filming. Features of this copy which may be bibliographically unique, which may alter any of the images in the reproduction, or which may significantly change the usual method of filming, are checked below.

L'Institut a microfilmé le meilleur exemplaire qu'il lui a été possible de se procurer. Les détails de cet exemplaire qui sont peut-être uniques du point de vue bibliographique, qui peuvent modifier une image reproduite, ou qui peuvent exiger une modification dans la méthode normale de filmage sont indiqués ci-dessous.

Coloured covers/
Couverture de couleur

Coloured pages/
Pages de couleur

Covers damaged/
Couverture endommagée

Pages damaged/
Pages endommagées

Covers restored and/or laminated/
Couverture restaurée et/ou pelliculée

Pages restored and/or laminated/
Pages restaurées et/ou pelliculées

Cover title missing/
Le titre de couverture manque

Pages discoloured, stained or foxed/
Pages décolorées, tachetées ou piquées

Coloured maps/
Cartes géographiques en couleur

Pages detached/
Pages détachées

Coloured ink (i.e. other than blue or black)/
Encre de couleur (i.e. autre que bleue ou noire)

Showthrough/
Transparence

Coloured plates and/or illustrations/
Planches et/ou illustrations en couleur

Quality of print varies/
Qualité inégale de l'impression

Bound with other material/
Relié avec d'autres documents

Continuous pagination/
Pagination continue

Tight binding may cause shadows or distortion along interior margin/
La reliure serrée peut causer de l'ombre ou de la distorsion le long de la marge intérieure

Includes index(es)/
Comprend un (des) index

Title on header taken from:/
Le titre de l'en-tête provient:

Blank leaves added during restoration may appear within the text. Whenever possible, these have been omitted from filming/
Il se peut que certaines pages blanches ajoutées lors d'une restauration apparaissent dans le texte, mais, lorsque cela était possible, ces pages n'ont pas été filmées.

Title page of issue/
Page de titre de la livraison

Caption of issue/
Titre de départ de la livraison

Masthead/
Générique (périodiques) de la livraison

Additional comments:/
Commentaires supplémentaires:

This item is filmed at the reduction ratio checked below/
Ce document est filmé au taux de réduction indiqué ci-dessous.

10X	12X	14X	16X	18X	20X	22X	24X	26X	28X	30X	32X
				✓							

The copy filmed here has been reproduced thanks to the generosity of:

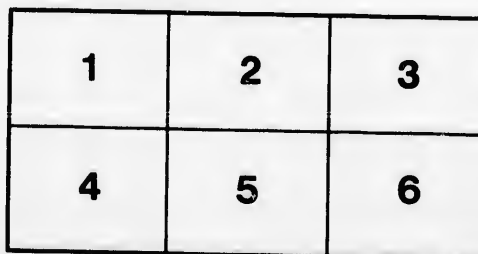
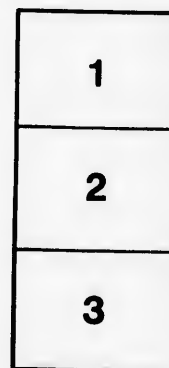
National Library of Canada

The images appearing here are the best quality possible considering the condition and legibility of the original copy and in keeping with the filming contract specifications.

Original copies in printed paper covers are filmed beginning with the front cover and ending on the last page with a printed or illustrated impression, or the back cover when appropriate. All other original copies are filmed beginning on the first page with a printed or illustrated impression, and ending on the last page with a printed or illustrated impression.

The last recorded frame on each microfiche shall contain the symbol \rightarrow (meaning "CONTINUED"), or the symbol ∇ (meaning "END"), whichever applies.

Maps, plates, charts, etc., may be filmed at different reduction ratios. Those too large to be entirely included in one exposure are filmed beginning in the upper left hand corner, left to right and top to bottom, as many frames as required. The following diagrams illustrate the method:



L'exemplaire filmé fut reproduit grâce à la générosité de:

Bibliothèque nationale du Canada

Les images suivantes ont été reproduites avec le plus grand soin, compte tenu de la condition et de la netteté de l'exemplaire filmé, et en conformité avec les conditions du contrat de filmage.

Les exemplaires originaux dont la couverture en papier est imprimée sont filmés en commençant par le premier plat et en terminant soit par la dernière page qui comporte une empreinte d'impression ou d'illustration, soit par le second plat, selon le cas. Tous les autres exemplaires originaux sont filmés en commençant par la première page qui comporte une empreinte d'impression ou d'illustration et en terminant par la dernière page qui comporte une telle empreinte.

Un des symboles suivants apparaîtra sur la dernière image de chaque microfiche, selon le cas: le symbole \rightarrow signifie "A SUIVRE", le symbole ∇ signifie "FIN".

Les cartes, planches, tableaux, etc., peuvent être filmés à des taux de réduction différents. Lorsque le document est trop grand pour être reproduit en un seul cliché, il est filmé à partir de l'angle supérieur gauche, de gauche à droite, et de haut en bas, en prenant le nombre d'images nécessaire. Les diagrammes suivants illustrent la méthode.

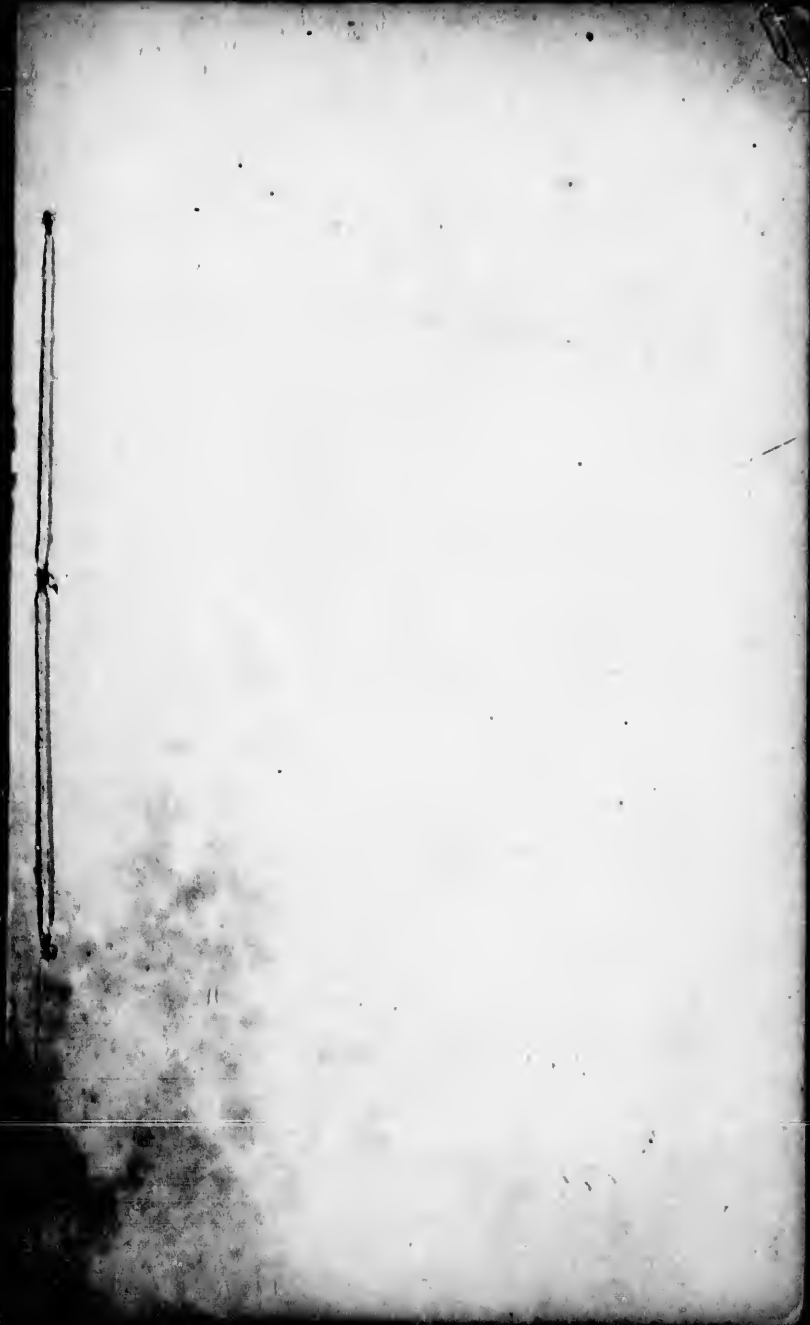
qu'il
cet
de vue
e
tion
és

DIRECTORY
OF THE
SONS OF TEMPERANCE
OF
NORTH AMERICA.

1868.

Published by order of the National Division of North America.

BOSTON:
W. B. ALLEN, PRINTERS, 4 SPRING LANE.
1868.





DIRECTORY

OF THE

75⁰⁶
SONS OF TEMPERANCE

OF

NORTH AMERICA.

1868.

Published by order of the National Division of North America.

BOSTON:

WRIGHT & POTTER, PRINTERS, 4 SPRING LANE.

1868.

esif
Bessom Harris
Mar 18, 1935

COMPILED BY
SAMUEL W. HODGES, M. W. S.,
Boston, Mass.

he
Ju

st
Se
be
lia
sic
po
sic
ot

ha
I
N
lu
va
we
re
pu
D

P R E F A C E.

*National Division of North America, }
BOSTON, January 1, 1868. }*

At the Twenty-Third Annual Session of the N. D. held at Wilmington, Delaware, on the 21st day of June 1867, the following resolution was adopted:—

Resolved, That the Most Worthy Scribe be instructed to prepare and have published, annually, a Sons of Temperance Directory, for the use of members of the Order; said Directory to contain a full list of the officers and members of the National Division, with the residence of each; and, also, as far as possible, a list of the Grand and Subordinate Divisions, with the place and time of meeting, and such other information as may be considered desirable.

In accordance with the above, this little volume has been prepared and published. In its preparation I have endeavored to carry out the intention of the N. D., but with nothing to guide me, except the resolution, it would not be singular if many things of value to the Order, which might have been inserted were omitted. Some features not contained in the resolution have been added, and it is hoped that the publication will be satisfactory to the National Division.

Fraternally yours,

SAM'L W. HODGES, M. W. S.

SONS OF TEMPERANCE.

On the 29th of September 1842, sixteen persons actively engaged in the temperance work, believing that an organization based upon the strictest principles of virtue, morality, sobriety and abstinence was needed to confirm the good resulting from signing the pledge, where those associated together could mutually strengthen each other, met at Teetotallers Hall No. 71 Division Street, New York, and organized the ORDER OF THE SONS OF TEMPERANCE. The organization soon extended to the adjoining States and from those over the whole United States. Its growth was rapid, and its foundations lying deep in the moral sense of the community, the element of permanency was united with its success. During the first twenty-five years of its existence, it has been planted in all the States of the Union, in each of the British Provinces of North America, in Great Britain and in Australia. The Order has always taken advanced ground on the Temperance Question, ever denying the right to sell intoxicating liquors as a beverage as well as prohibiting its use.

The following extract from the Report of the M. W. P., in 1867, is a just exposition of its principles:—

“ Its fundamental principle is Total Abstinence from all that can intoxicate, and it presents a social and fraternal combination to meet and overcome the social allurements of intemperance, and the combined influence of the Liquor Traffic in our midst.

“ While it presents the Pledge as useful and essential, it realizes that merely signing the Pledge is not reformation. There must be a Temperance home and a Temperance gospel, together with a social and fraternal influence thrown around the tempted and the fallen when once the Pledge is signed, old friends discarded, and life commenced anew. The weekly meetings of the Order are made doubly interesting and attrac-

tive by the presence of Woman, with her active sympathy and co-operation, her restraining and elevating influences so necessary for true and permanent reform. We would take the Drunkard from his cups and clothe him anew, prepare him to discharge the duties of life, and present him to the Church with a clear head and mind, ready for her saving and hallowed influences. We would place the cause of Temperance side by side with the Gospel, aid the Church in her holy mission, glorify God, and benefit humanity.

"The Order embraces more of the moral and religious element of society than ever before, and large numbers of clergymen, including many leading divines, distinguished statesmen and citizens, have united with us in aid of this great reformation. Our principles and objects are becoming better known, and our organization and mode of operation better understood.

"The power of a combined, compact, organized association is being more and more recognized, not only by business men, but by the professed philanthropist and statesman.

"The Order, by its plain constitution; its practical code of laws; its sound financial basis; its entire freedom from the cumbersome machinery of signs, grips, and degrees; its judicious and gradual opening of its doors to the youth of both sexes, inviting woman to share in its great work; its increasing co-operation, sympathy, and union with the moral and Christian elements of the country, inviting and receiving into its ranks thousands of clergymen and leading laymen of the Church, and uniting with them in prayerful, devoted labor, is more and more receiving the confidence and co-operation of the great and good of our land, and possessing superior advantages for advancing the Cause and reaching the mass of the people, educating, enlightening and saving."

The following pages will give some idea of the strength of the organization at this time and it is hoped will serve as a guide to many brethren during their travels, either for business or pleasure as well as prove a valuable reference book in corresponding with members throughout our jurisdiction.

JANUARY.

Sun.	Mon.	Tues.	Wed.	Thurs.	Fri.	Sat.
...	1	2	3	4
5	6	7	8	9	10	11
12	13	14	15	16	17	18
19	20	21	22	23	24	25
26	27	28	29	30	31	...

Sons of Temperance

OF

NORTH AMERICA.

M. W. P., . . . JOHN N. STEARNS,

172 William St., New York.

M. W. Scribe, SAMUEL W. HODGES,

58 Bromfield St., Boston, Mass.

Fri.	Sat.
3	4
10	11
17	18
24	25
31	...

ance

NS,
New York.

GES,
on, Mass.

- 1
- 2
- 3
- 4
- 5
- 6
- 7
- 8
- 9
- 10
- 11
- 12
- 13
- 14
- 15
- 16
- 17
- 18
- 19
- 20
- 21
- 22
- 23
- 24
- 25
- 26
- 27
- 28
- 29
- 30
- 31

FEBRUARY.

Sun.	Mon.	Tues.	Wed.	Thurs.	Fri.	Sat.
...	1
2	3	4	5	6	7	8
9	10	11	12	13	14	15
16	17	18	19	20	21	22
23	24	25	26	27	28	29

CERTIFICATE OF MEMBERSHIP

IN

Subordinate Divisions Sons of Temperance.

The undersigned announces to the Members of the Order, that he is now prepared to furnish copies of this Certificate of Membership, from the original Steel Engraving, to those who desire, either singly or in quantities, at the following prices:

Thin plain paper, single copy,	\$0 50
" " " per dozen,	5 00
Thick, heavy paper, single copy,	75
" " " per dozen,	6 00
Thick paper, colored, single copy,	1 00
" " " per dozen,	9 00

This certificate was engraved at great expense, and makes a permanent memorial of the Order, as well as a beautiful ornament (when appropriately framed) for the Parlor or Division Room.

J. N. STEARNS,
172 William St., N. Y.

Y.

rs.	Fri.	Sat.
...	...	1
3	7	8
3	14	15
	21	22
	28	29

BERSHIP

temperance.

rs of the Order,
his Certificate of
ng, to those who
following prices:

- \$0 50
- 5 00
- 75
- 6 00
- 1 00
- 9 00

, and makes a
beautiful orna-
or or Division

NS,
n St., N. Y.

- 1
- 2
- 3
- 4
- 5
- 6
- 7
- 8
- 9
- 10
- 11
- 12
- 13
- 14
- 15
- 16
- 17
- 18
- 19
- 20
- 21
- 22
- 23
- 24
- 25
- 26
- 27
- 28
- 29
- 30
- 31

MARCH.

Sun.	Mon.	Tues.	Wed.	Thurs.	Fri.	Sat.
1	2	3	4	5	6	7
8	9	10	11	12	13	14
15	16	17	18	19	20	21
22	23	24	25	26	27	28
29	30	31

NEW TEMPERANCE DIALOGUES.

So many inquiries have been made for New Temperance Dialogues, suitable for Lodges and Divisions, and other Temperance Meetings, that we have secured two new Dramas or Dialogues, which were written and performed in the City of Washington, before crowded houses, with great satisfaction. and have just published the same in a neat little pamphlet. Their names are as follows:

THE FIRST GLASS, OR THE POWER OF WOMAN'S INFLUENCE;
AND

THE YOUNG TEETOTALER, OR SAVED AT LAST.

They are well written, and will supply a want long felt in the Temperance Work.

Price 15 cents, single copies, \$1.50 per dozen. Sent by Mail on receipt of price. Address,

J. N. STEARNS,
172 William St., N. Y.

RS.	Fri.	Sat.
5	6	7
	13	14
	20	21
	27	28
...

LOGUES.

ew Temperance
and other Tem-
new Dramas or
in the City of
at satisfaction.
ticle pamphlet,

INFLUENCE;

LAST.

ng felt in the

ent by Mail

NS,
St., N. Y.

- 1
- 2
- 3
- 4
- 5
- 6
- 7
- 8
- 9
- 10
- 11
- 12
- 13
- 14
- 15
- 16
- 17
- 18
- 19
- 20
- 21
- 22
- 23
- 24
- 25
- 26
- 27
- 28
- 29
- 30
- 31

APRIL

Sun.	Mon.	Tues.	Wed.	Thurs.	Fri.	Sat.
...	1	2	3	4
5	6	7	8	9	10	11
12	13	14	15	16	17	18
19	20	21	22	23	24	25
26	27	28	29	30

New South Wales, Australia.

G. Scribe, WILLIAM A. PASFIELD, Tempe, Cook's Riv., N.S.W.

Subordinate Divisions.

No.	NAME.	Location.	Meet.
1	Day Spring,	Sydney, Tem. Hall, Pitts St.	Thurs.
2	Rose of Australia,	Sydney, City Miss. Chapel,	Fri.
3	Good Samaritan,	Newtown, Odd Fell's Hall,	Wed.
5	Day Dawn,	New Castle,	Tues.
6	Happy Day,	W. Maitland, Hunter River,	Tues.
7	Morning Star,	Glebe,	Fri.
8	Excelsior,	Surrey Hills,	Thurs.
9	Earnest Desire,	Plattsburg, New Castle Dist.	Fri.
10	Hand of Friendsh.,	Richwood River,	Fri.
11	Bud of Hope,	Waratale, New Castle Dist.,	Fri.
12	Rising Star,	Raymond Terr., Hunter Riv.	Fri.

Hours.	Fri.	Sat.
2	3	4
9	10	11
6	17	18
3	24	25
)

Australia.

Book's Riv., N.S.W.

	Meet.
Pitts St.	Thurs.
Chapel.	Fri.
Hall.	Wed.
River.	Tues.
.	Tues.
.	Fri.
e Dist.	Thurs.
.	Fri.
Dist.	Fri.
r Riv.	Fri.

- 1
- 2
- 3
- 4
- 5
- 6
- 7
- 8
- 9
- 10
- 11
- 12
- 13
- 14
- 15
- 16
- 17
- 18
- 19
- 20
- 21
- 22
- 23
- 24
- 25
- 26
- 27
- 28
- 29
- 30
- 31

MAY.

Sun.	Mon.	Tues.	Wed.	Thurs.	Fri.	Sat.
...	1	2
3	4	5	6	7	8	9
10	11	12	13	14	15	16
17	18	19	20	21	22	23
24	25	26	27	28	29	30
31

**NATIONAL TEMPERANCE SOCIETY
AND
PUBLICATION HOUSE.**

The "National Temperance Advocate," monthly, 16 pages, (per year),	\$1 00
20 copies to one address,	16 00
The "Youth's Temperance Banner," monthly, 4 pages, (per year),	30
50 copies to one address,	7 00
100 copies to one address,	12 00

JOHN N. STEARNS, Publishing Agent.
172 William St., N. Y.

Wrs.	Fri.	Sat.
.	1	2
7	8	9
4	15	16
1	22	23
3	29	30
...

SOCIETY

HOUSE.

thly, \$1 00
 . 16 00
 hly, 30
 . 7 00
 . 12 00

Working Agent.
 lam St., N. Y.

- 1
- 2
- 3
- 4
- 5
- 6
- 7
- 8
- 9
- 10
- 11
- 12
- 13
- 14
- 15
- 16
- 17
- 18
- 19
- 20
- 21
- 22
- 23
- 24
- 25
- 26
- 27
- 28
- 29
- 30
- 31

JUNE.

Sun.	Mon.	Tues.	Wed.	Thurs.	Fri.	Sat.
...	1	2	3	4	5	6
7	8	9	10	11	12	13
14	15	16	17	18	19	20
21	22	23	24	25	26	27
28	29	30

THE CROWNING MUSICAL TRIUMPH OF THE YEAR.

The Abbe Liszt has addressed to the Messrs. Chickering the following letter, the only testimonial in favor of a piano-forte maker which he has ever given in Europe or America:

[TRANSLATION.]

Messrs. CHICKERING:—It is very agreeable to me to add my name to the concert of praises of which your pianos are the object.

To be just, I must declare them perfect, and *perfectissimes* (superlatively perfect.)

There is no quality which is foreign to them. Your instruments possess in the supreme degree nobility and power of tone, elasticity and security of the touch, harmony, brilliancy, solidity, charms and prestige; and thus offer a harmonious ensemble of perfections to the exclusion of all defects.

Pianists of the least pretensions will find means of drawing from them agreeable effects; and in face of such products—which truly do honor to the art of the construction of instruments—the role of the critic is as simple as that of the public; the one has but to applaud them conscientiously and with entire satisfaction, and the other but to procure them in the same manner.

In congratulating you sincerely upon the great and decisive success obtained at the Exposition at Paris, I am pleased to anticipate the happy continuation of the same in all places where your pianos will be heard, and I beg that you accept, gentlemen, the expression of my most distinguished sentiments of esteem and consideration.

(Signed,)

ROME, December 26, 1837.

F. LISZT.

Thurs.	Fri.	Sat.
4	5	6
11	12	13
18	19	20
25	26	27
...

PH OF THE YEAR.

essrs. Chickering the
 favor of a piano-forte
 pe or America:

able to me to add my
 your pianos are the
 , and *perfectissimes*

them. Your instru-
 ability and power of
 harmony, brilliancy,
 offer a harmonious
 all defects.

means of drawing
 of such products—
 struction of instru-
 that of the public;
 sly and with entire
 them in the same

reat and decisive
 , I am pleased to
 me in all places
 that you accept,
 ished sentiments

F. LISZT.

- 1
- 2
- 3
- 4
- 5
- 6
- 7
- 8
- 9
- 10
- 11
- 12
- 13
- 14
- 15
- 16
- 17
- 18
- 19
- 20
- 21
- 22
- 23
- 24
- 25
- 26
- 27
- 28
- 29
- 30
- 31

JULY.

Sun.	Mon.	Tues.	Wed.	Thurs.	Fri.	Sat.
...	1	2	3	4
5	6	7	8	9	10	11
12	13	14	15	16	17	18
19	20	21	22	23	24	25
26	27	28	29	30	31	...

*Subordinate Divisions under the jurisdiction of the
National Division.*

FLORIDA.

- No. 1, Madlson, Madlson Court House. *D. G. W. P.*, S. H. Bunker.
- No. 2, Navy Yard, Pensacola Navy Yard. *D. G. W. P.*, Capt. Phillip A. Caro.
- No. 3, Jacksonville, Jacksonville. *D. G. W. P.*, Maj. F. E. Little, Box 104.

ALABAMA.

- No. 1, Rising Virtue, Eufaula. *D. G. W. P.*, A. J. Veal.
- No. 2, Tompkinsville, Tompkinsville. *D. G. W. P.*, Joseph Russell.
- No. 3, Epworth, Epworth. *D. G. W. P.*, A. J. Veal, Eufaula.

MISSISSIPPI.

- No. 1, Water Valley, Water Valley. *D. G. W. P.*, M. E. Abbey.

LOUISIANA.

- No. 1, Pelican, New Orleans. *D. G. W. P.*, Thos. H. Jones, Algiers.

Y.

Thurs.	Fri.	Sat.
2	3	4
9	10	11
16	17	18
23	24	25
0	31	...

Jurisdiction of the

D. G. W. P., S. H.

D. G. W. P., Capt.

W. P., Maj. F. E.

A. J. Veal.

W. P., Joseph

Veal, Eufair.

W. P., M. E.

os. H. Jones,

- 1
- 2
- 3
- 4
- 5
- 6
- 7
- 8
- 9
- 10
- 11
- 12
- 13
- 14
- 15
- 16
- 17
- 18
- 19
- 20
- 21
- 22
- 23
- 24
- 25
- 26
- 27
- 28
- 29
- 30
- 31

AUGUST.

Sun.	Mon.	Tues.	Wed.	Thurs.	Fri.	Sat.
...
2	3	4	5	6	7	1
9	10	11	12	13	14	8
16	17	18	19	20	21	15
23	24	25	26	27	28	22
30	31	29

Sons of Temperance Publications.

"The Abstainer," weekly, price \$1.25 gold, per year.
Published by

P. MONAGHAN,
101 Barrington St., Halifax, N. S.

"The Nation," weekly, price \$2.50 a year.
Published by

JAMES M. USHER,
27 Cornhill, Boston, Mass.

"The Western Temperance Advocate," semi-monthly, price
\$1.00 per year.
Published by

T. M. VAN COURT,
P. O. Box 6,225, Chicago, Ill.

UST.

	Thurs.	Fri.	Sat.
...	1
6	7	8	
13	14	15	
20	21	22	
27	28	29	
...	

Publications.

Sold, per year.
P. MONAGHAN,
St., Halifax, N. S.

ES M. USHER,
Hill, Boston, Mass.

al-monthly, price

VAN COURT,
25, Chicago, Ill.

- 1
- 2
- 3
- 4
- 5
- 6
- 7
- 8
- 9
- 10
- 11
- 12
- 13
- 14
- 15
- 16
- 17
- 18
- 19
- 20
- 21
- 22
- 23
- 24
- 25
- 26
- 27
- 28
- 29
- 30
- 31

SEPTEMBER.

Sun.	Mon.	Tues.	Wed.	Thurs.	Fri.	Sat.
...	...	1	2	3	4	5
6	7	8	9	10	11	12
13	14	15	16	17	18	19
20	21	22	23	24	25	26
27	28	29	30

MINNESOTA.

D. M. W. P.—THOS. T. HOWARD,
410 Milwaukee St., Mil., Wis.

GREAT BRITAIN AND IRELAND.

M. W. Scribe,—CHARLES ASHLEY,
1 Browning St., Salford, Eng.

OREGON AND NEVADA.

D. M. W. P.—Hon. JOSEPH WEED,
San Francisco, California.

MBER.

Thurs.	Fri.	Sat.
3	4	5
10	11	12
17	18	19
24	25	26
...

T A.
OWARD,
ee St., Mil., Wis.

IRELAND.

SHLEY,
Salford, Eng.

V A D A.

WEED,
California.

- 1
- 2
- 3
- 4
- 5
- 6
- 7
- 8
- 9
- 10
- 11
- 12
- 13
- 14
- 15
- 16
- 17
- 18
- 19
- 20
- 21
- 22
- 23
- 24
- 25
- 26
- 27
- 28
- 29
- 30
- 31

OCTOBER.

Sun.	Mon.	Tues.	Wed.	Thurs.	Fri.	Sat.
....	1	2	3
4	5	6	7	8	9	10
11	12	13	14	15	16	17
18	19	20	21	22	23	24
25	26	27	28	29	30	31

SONS OF TEMPERANCE.

I call your attention to the following articles purchased expressly for Subordinate Divisions, the books with printed Titles and Headings, with the prices annexed, all of which I am prepared to furnish.

<p>Record of Propositions, . \$0 75 Black Book, 1 25 Blank F. S. Receipt B'k., . 2 00 100 Notices of Election, . 1 00 100 " of Suspens., 1 00 100 Constitut. and Code, . 4 00 200 Blanks F. S. Recpts., . 1 50 1 Bible for Chaplain, . . 5 00 1 Gavel for W. P., 1 25 1 Marble block, for W.P. . 5 00 1 small trunk, for W.P. . 1 50 1 Charter, frame, 5 00 4 doz. white Regalia, . . 30 00 new, 4 00 12 Temperance Chines, 20 00</p>	<p>Signature Book, (Const.) \$1 25 Blank Draft Book, 2 00 100 Propositions, 2 00 1 Record Book for R. S., . 2 00 1 Ledger for F. S., 50 1 Cash Book for F. S., . . 50 1 " " for Treas., 3 50 1 Ballot Box, 50 2 doz. Ballots, 2 00 4 Wands Con's and Sents. . 2 00 50 Ode Cards, 2 00 1 Seal and 300 impress., . 5 00 1 Set plated Emblems, . . new, 20 00 1,000 Ass't Tracts, 4 00</p>
---	--

The above are all new and of superior quality. In many cases, a cheaper article could be sent, if desired, reducing the expense materially. Many of the above articles would answer the purposes of a Division for many years, and, with the exception of regalia and blanks, would answer as well for a Division of three hundred members as for fifty members.

SAMUEL W. HODGES, M. W. S.,
 68 Bromfield St., Boston, Mass.

BER.

Thurs.	Fri.	Sat.
1	2	3
8	9	10
15	16	17
22	23	24
29	30	31

LANCE.

g articles purchased
books with printed
exed, all of which I

- Book, (Const.) \$1 25
- Book, . . . 2 00
- tions, . . . 1 00
- ook for R. S., 2 00
- F. S., . . . 2 00
- for F. S., . . . 50
- for Treas., . . . 50
- , . . . 3 50
- , . . . 50
- 's and Sents. 2 00
- . . . 2 00
- o impress., 6 00
- Emblems, . . . 20 00
- cts, . . . 4 00

ality. In many
d, reducing the
would answer the
with the excep-
for a Division

, M. W. S.,
Boston, Mass.

- 1
- 2
- 3
- 4
- 5
- 6
- 7
- 8
- 9
- 10
- 11
- 12
- 13
- 14
- 15
- 16
- 17
- 18
- 19
- 20
- 21
- 22
- 23
- 24
- 25
- 26
- 27
- 28
- 29
- 30
- 31

NOVEMBER.

Sun.	Mon.	Tues.	Wed.	Thurs.	Fri.	Sat.
1	2	3	4	5	6	7
8	9	10	11	12	13	14
15	16	17	18	19	20	21
22	23	24	25	26	27	28
29	30

FORM OF APPLICATION

FOR A CHARTER FOR A

Division of the Sons of Temperance.

The undersigned, inhabitants of _____ believing the Order of the Sons of Temperance to be well calculated to extend the blessings of Total Abstinence, and promote the general welfare of mankind, respectfully petition the Division of _____ to grant them a Charter to open a new Division, to be called the _____ Division, No. _____ Sons of Temperance, of _____ to be located in _____ and under your jurisdiction.

We pledge ourselves, individually and collectively, to be governed by the Rules and Usages of the Grand Division, and also by those of the National Division of North America.

Enclosed is the Fee for Charter and Books, . . . \$10 00

NOTE.—The application for a Charter must state whether the applicants are already members of the Order or not. Those who are members must have Cards of Withdrawal, from the Divisions where they have belonged, to be submitted to the instituting officers, as evidence of membership.

All applications and communications should be addressed to the G. Scribe of the State if a G. P. is organized there, if not, to

SAMUEL W. HODGES, M. W. S.,
Ecstun, Mass.

R.

rs.	Fri.	Sat.
5	6	7
	13	14
	20	21
	27	28
...

TION

perance.

to be well cal-
ence, and pro-
ly petition the
a Charter to

to be located

ely, to be gov-
ion, and also
ca.

. \$10 00

whether the
those who are
isions where
officers, as

ddressed to
e, if not, to

S.,
Mass.

- 1
- 2
- 3
- 4
- 5
- 6
- 7
- 8
- 9
- 10
- 11
- 12
- 13
- 14
- 15
- 16
- 17
- 18
- 19
- 20
- 21
- 22
- 23
- 24
- 25
- 26
- 27
- 28
- 29
- 30
- 31

DECEMBER.

Sun.	Mon.	Tues.	Wed.	Thurs.	Fri.	Sat.
...	...	1	2	3	4	5
6	7	8	9	10	11	12
13	14	15	16	17	18	19
20	21	22	23	24	25	26
27	28	29	30	31

FORM OF APPLICATION FOR A GRAND DIVISION CHARTER.

Brother M. W. Scribe :

(Date.)

The undersigned, inhabitants of _____, and Past and Acting
 W. P's, of _____ Division No. 1, _____ Division No. 2,
 Division No. 3, _____ Division No. 4, of the Sons of Temperance,
 of said _____, respectfully petition the National Division to
 grant them a charter, to open a Grand Division, to be called
 the Grand Division of the Sons of Temperance of the
 of _____, to be located _____

We pledge ourselves, individually and collectively, to be
 governed by the rules and usages of the National Division.

Enclosed is the Charter Fee, \$20. (Signed by at least seven.)

All applications and communications should be addressed to,

SAMUEL W. HODGES, M. W. S.,
No. 58 Bromfield St., Boston, Mass.

R.

	Fri.	Sat.
	4	5
	11	12
	18	19
	25	26
...

TION

ARTER.

(Date.)

ist and Acting
 No. 2,
 Temperance,
 Division to
 to be called
 the

ively, to be
 Division.
 east seven.)
 dpressed to,
 W. S.,
 n, Mass.

- 1
- 2
- 3
- 4
- 5
- 6
- 7
- 8
- 9
- 10
- 11
- 12
- 13
- 14
- 15
- 16
- 17
- 18
- 19
- 20
- 21
- 22
- 23
- 24
- 25
- 26
- 27
- 28
- 29
- 30
- 31

NATIONAL DIVISION OF NORTH AMERICA.

Officers, 1866-68.

- M. W. P. JOHN N. STEARNS, New York, N. Y.
 M. W. A. REV. JOHN M. CRAMP, Wolfville, Nova Scotia.
 M. W. Scribe SAMUEL W. HODGES, Boston, Mass.
 M. W. Treas. WILLIAM H. A. KEANS, St. John, N. B.
 M. W. Chap. REV. J. B. ABBETT, Indianapolis, Ind.
 M. W. Con. JAMES M. LYLE, Philadelphia, Pa.
 M. W. Sent. JAMES C. PICKELS, Wilmington, Del.

Names of Members present at Twenty-Third Annual Session, Wilmington, Del., June, 1867.

[The date following each name, refers to the year the member was initiated in the National Division.]

- EASTERN NEW YORK.
 H. S. McCollum, 70 Cedar Street, N. Y. City.—1852.
 Alexander Campbell, 58 Sand St., Brooklyn.—1857.
 William H. Armstrong, Internal Revenue Office, Washington, D. C.—1857.
 John Davies, Williamsburg.—1857.
 William E. Macdonough, 41 Clinton St., N. Y. City.—1860.
 C. A. Gardiner, Sag Harbor, L. Island.—1860.
 John N. Stearns, 172 William St., N. Y. City.—1860.
 Adam C. Flanagan, cor. 127th Street and 4th Avenue, N. Y. City.—1862.
 Richard Brittain, Poughkeepsie.—1864.
 A. E. Bradley, 172 William St. N. Y. City.—1866.
 John Thompson, 172 William St., N. Y. City.—1867.
 Alson Ostrander, Poughkeepsie.—1867.
 Scovill D. Foot, 46 Cliff St., (P. O. Box 3,913,) N. Y. City.—1867.
- WESTERN NEW YORK.
 J. C. O. Redington, Ogdensburg.—1867.

TH AMERICA.

N. Y.
le, Nova Scotia.
on, Mass.
John, N. B.
olls, Ind.
, Pa.
ton, Del.

Third Annual
, 1867.

the member was

52.
7.
Washington,

y.—1860.

0.
venue, N. Y.

Y. City.—

NEW JERSEY.

- Thomas E. Roberts, *Harrisonville*.—1853.
Henry B. Howell, *Trenton*.—1855.
Pethuel Mason, *Somerville*.—1856.
Stephen B. Ransom, *Jersey City*.—1858.
Theodore Collins, 314 *Marriott St.*, *Philadelphia*.—1859.
Rev. G. R. Snyder, *Trenton*.—1860.
J. S. Furry, 210 *West 7th St.*, *Wilmington, Del.*—1862.
J. Loxley Rheeas, *Mount Holly*.—1863.
Benjamin D. Doremus, *Paterson*.—1863.
William Robins, *Trenton*.—1865.
George H. Hick, 432 *Chestnut St.*, *Philadelphia, Pa.*—1866.
Rev. A. G. Lawson, 17th *Street, near 5th Avenue, Brooklyn, N. Y.*—1867.
Fred. Wm. Kelly, *Mount Holly*.—1867.

MARYLAND.

- B. E. Gantt, *Millersville*.—1856.
R. T. Smith, 55 *Fayette St.*, *Baltimore*.—1867.
J. H. Christ, *Uniontown*.—1867.
Rev. Thomas Myers, 75 *McCulloch St.*, *Baltimore*.—1867.
G. R. Stone, *Reisterstown*.—1867.

PENNSYLVANIA.

- Robert M. Foust, 729 *Brown St.*, *Philadelphia*.—1848.
John C. Sims, 261 *South 17th St.*, *Philadelphia*.—1851.
Dr. F. A. Van Dyke, * 1036 *Race St.*, *Philadelphia*.—1853.
John H. Lewars, 408 *Market St.*, *Philadelphia*.—1857.
Charles S. Massey, *Allentown*.—1859.
Rev. H. R. Parmenter, 56 *North 4th St.*, *Philadelphia*.—1859.
William Nicholson, 117 *S. 7th St.*, *Philadelphia*.—1859.
Joseph M. Hopper, *Philadelphia*.—1859.
W. A. Duff, 825 *Arch St.*, *Philadelphia*.—1860.
Rev. Kendall Brooks, D. D., 530 *Arch St.*, *Philadelphia*.—1863.
William W. Axe, *Frankford, Philadelphia*.—1864.
Benjamin Lochman, *Allentown*.—1864.
Dr. T. Rusling Davis, 907 *North 5th St.*, *Philadelphia*.—1864.
Joseph R. Bolton, *Philadelphia*.—1865.
B. F. Dennison, 973 *North 5th St.*, *Philadelphia*.—1865.
Benjamin F. Custer, *Altoona, Blair County*.—1866.
James M. Lyle, 607 *Samson St.*, *Philadelphia*.—1866.
Louis Wagner, 204 *South 4th St.*, *Philadelphia*.—1866.
Amos H. Chandler, *Beaver Valley, Del.*—1867.
Rev. W. B. Wood, 1215 *Hancock St.*, *Philadelphia*.—1867.
Jacob Wentz, *Port Carbon*.—1867.
Rev. W. C. Best, 965 *North 5th St.*, *Philadelphia*.—1867.
Joseph W. Martin, 432 *Chestnut St.*, *Philadelphia*.—1867.

CONNECTICUT.

- R. P. Cowles, *New Haven*.—1860.
George Stone, *Hartford*.—1862.
E. P. Thompson, *Naugatuck*.—1866.
Joseph B. Baldwin, *New Haven*.—1866.

* Since dead.

S. O. Canfield, *Bridgeport*.—1867.
T. C. Bush, *New Haven*.—1867.

MASSACHUSETTS.

William R. Stacy, *Boston*.—1845.
Thomas Chubbuck, *Springfield*.—1848.
Charles W. Slack, *Commonwealth Office, Boston*.—1850.
David S. Tarr, *Boston*.—1851.
Rev. C. L. McCurdy, *Leominster*.—1853.
Samuel W. Hodges, *No. 58 Bromfield St., Boston*.—1853.
H. D. Cushing, *Boston*.—1857.
Watson B. Hastings, *East Cambridge*.—1850.
Frederick H. Henshaw, *No. 40 Barclay St., N. Y.*—1862.
William Mecorney, *Worcester*.—1863.
Isaac W. May, *No. 39 State St., Boston*.—1866.
James H. Roberts, *No. 8 Causeway St., Boston*.—1866.

MAINE.

Rev. E. W. Jackson, *Gorham*.—1857.
John S. Kimball, *Bangor*.—1860.
L. T. Boothby, *Waterville*.—1860.

OHIO.

S. F. Cary, *Cincinnati*.—1847.
John R. Williams, *Salem, Columbia Co.*.—1856.
H. V. Horton, *Cincinnati*.—1858.
George P. Burwell, *Cleveland*.—1861.
D. W. Gage, *Cleveland*.—1863.
William L. King, *Mount Vernon*.—1864.
Dr. J. B. Thompson, *Columbus*.—1864.

DELAWARE.

Robert C. Fraim, *New Castle*.—1859.
Robert Galbrath, *1011 Orange St., Wilmington*.—1859.
R. B. McDonnell, *Wilmington*.—1860.
James P. Hayes, *Wilmington*.—1865.
J. C. Pickels, *Wilmington*.—1865.
George G. Lobdell, *Wilmington*.—1866.
Solomon Hersey, *Wilmington*.—1866.
M. Lockard, *Wilmington*.—1867.
William M. Horn, *806 Walnut St., Wilmington*.—1867.
James Whitelock, *305 East 4th St., Wilmington*.—1867.
William Silver, Jr., *305 Shipley St., Wilmington*.—1867.
William T. Collins, *Smyrna*.—1867.
Charles B. Woodward, *415 West 2d St., Wilmington*.—1867.
James H. Greenman, *Wilmington*.—1867.

INDIANA.

John B. Abbett, *Indianapolis*.—1859.
Dr. L. Abbett, *Indianapolis*.—1864.

TENNESSEE.

Isaac Litton, *Nashville*.—1847.
Isaac Paul, *Nashville*.—1851.
Joseph S. Carels, *Nashville*.—1859.
James L. Sloan, *Centreville, Hickman Co.*.—1867.

W. Bryce Thompson, *Nashville*.—1867.

J. Valentine Powell, *Memphis*.—1867.

KENTUCKY.

Dr. J. J. Bradford, *Augusta*.—1858.

ILLINOIS.

Rev. J. C. Stoughton, *Aurora*.—1856.

A. G. Warner, *Chicago*.—1863.

RHODE ISLAND.

W. N. Johnson, *Providence*.—1865.

John Spencer Williams, *South Providence*.—1866.

Frederick A. Fairbrother, *No. 102 Pine St., Providence*.—1867.

John J. Sprague, *Providence*.—1867.

Charles H. Higgins, *Providence*.—1867.

NEW HAMPSHIRE.

True Osgood, *Concord*.—1860.

William H. Earle, *Vineland, New Jersey*.—1864.

Rev. E. E. Cummings, D. D., *Concord*.—1866.

John E. Goodwin, *Dover*.—1865.

NEW BRUNSWICK.

Oscar D. Wetmore, *St. John*.—1862.

Rev. G. O. Heustis, *Carleton, St. John*.—1867.

NOVA SCOTIA.

Rev. J. M. Cramp, D. D., *Wolfville*.—1854.

Patrick Monaghan, *Halifax, (Box 87)*.—1860.

VERMONT.

H. F. Austin, *Swanton*.—1867.

CANADA WEST.

E. Carswell, *Oshawa*.—1862.

Rev. W. Pirritte, *Brooklin*.—1865.

CANADA EAST.

William Joselyn, *Bedford*.—1860.

DISTRICT OF COLUMBIA.

F. M. Bradley, *Washington*.—1864.

John Johnson, *Box 551, Washington*.—1860.

Joseph K. Bridge, *Washington*.—1866.

William P. Drew, *Washington*.—1867.

VIRGINIA.

Roscoe G. Greene, *Petersburg*.—1863.

Dr. Peterfield Trent, *Richmond*.—1860.

WEST VIRGINIA.

Charles Hooton, *Rowlesburg, Preston Co.*.—1867.

SOUTH CAROLINA.

B. D. Townsend, *Society Hill*.—1855.

C. W. Dudley, *Bennettsville*.—1867.

EASTERN NEW YORK.

Officers of the Grand Division.

- G. W. P., . . . Rev. SAMUEL MCKEAN, West Troy.
 G. W. A., . . . WILLIAM H. CURTIS, Williamsburg.
 G. Scribe, . . . S. D. FOOT, 46 Cliff Street, New York.
 G. Treas., . . . CHARLES H. AMERMAN, Harlem.
 G. Chap., . . . Rev. PETER STRYKER, 319 West 31st St., N. Y.
 G. Con., . . . LEVI A. FARR, 11 Horatio Street, New York.
 G. Sent., . . . ISAAC M. LAWRENCE, New York.
 P. G. W. P., JOHN THOMPSON, 172 Williams St., New York.

Representatives Elect to National Division.

- P. G. W. Patriarchs—*
 George Hall,
 Adam C. Flanigan, Sen.,
 John Reid,
 Horace S. Allen,
 William H. Armstrong,
 Henry Hagner,
 H. A. Guild,
 Theodore L. Cuyler,
 John N. Stearns,
 Thomas T. Sheffield,
 Joseph S. Smith,
 William Mitchell,
 U. G. Paris,
 Nat. W. Foster,
 John Thompson,
 Israel S. Deihl,
 J. S. P. Lord.
P. G. W. Associates—
 Alexander Campbell, --
 John Davies,
- William McBride,
 William J. Spence,
 William E. Macdonough,
 Phineas S. Jacobs,
 W. Jared Packard,
 Richard Brittain,
 M. A. Reed,
 A. P. Higgins,
 Alson Ostrander, --
 H. S. McCollum,
 A. E. Bradley, --
 John Sherry,
 C. A. Gardner.
G. W. Patriarch—
 Samuel McKean. --
G. W. Associate—
 William H. Curtis.
P. G. Scribe—
 Thomas Edgerly.
G. Scribe—
 Scovill D. Foot.

Subordinate Divisions.

No.	NAME.	Location.	Meet.
New York City.			
1	New York,	Cor. Hudson & Christo. sts.,	Thurs.
2	Union, . . .	3d Av, nr. 128th st., Harlem,	Wed.
3	Neptune, . . .	Grand st., cor. Allen, . . .	Fri.
5	Harmony, . . .	E. Broadway, junc. Grand st.	Mon.
6	Liberty, . . .	835 Broadway, cor. 13th st.,	Tues.
7	Marshall, . . .	195 Bowery, . . .	Thurs.
11	Chelsea, . . .	Eighth Avenue, cor. 25th st.,	Tues.
12	Rose Hill, . . .	Eighth Avenue, cor. 18th st.,	Fri.
14	Excelsior, . . .	Cor. 3d Av., n. E. 27th st.,	Tues.
15	Manhattan, . . .	Union Hall, c. Av C & 4th st.,	Thurs.
16	Raymond, . . .	N.W. c. Huds'n & Christo. sts.	Fri.
22	LaFayette, . . .		
26	Scotia, . . .	29th St., cor. Eighth Avenue,	Fri.
27	Marion, . . .	3d Av., c. 86th st., . . .	Mon.
34	Crystal Wave, . . .	Grand st., cor. Ludlow, . . .	Fri.
39	Morning Star, . . .	Cor. Hudson & Christo. sts.,	Sat.
41	Croton, . . .	Union Hall, c. Av C & 4th st.,	Wed.
46	Ashland, . . .	Cor. 18th St. and 8th Av., . . .	Wed.
51	Mechanics', . . .	Ninth Av., cor. 127th st., . . .	Fri.
55	Hariem, . . .	Third Av. near 128th st., . . .	Tues.
62	Howard, . . .	N.W.c.Huds'n & Christo.sts.	Wed.
97	Friendship, . . .	Eighth Avenue, cor. 18th st.,	Tues.
103	Stryker, . . .	Eighth Avenue, cor. 29th st.,	Sat.
157	Dodge, . . .	Eighth Avenue, cor. 46th st.,	Thurs.
158	Covenant, . . .	Grand st., cor. Clinton, . . .	Fri.
177			
Brooklyn.			
4	Washington, . . .	166 Fulton st., . . .	Mon.
6	Nassau, . . .	159 Fulton Avenue, . . .	Thurs.
10	Progressive, . . .	9th st., n. No 1st, Williamsb'g,	Wed.
13	Brooklyn, . . .	Grenada Hall, 112 Myrtle Av.	Tues.
17	Kings County, . . .	Franklin st., near Kent Av.,	
		Green Point, . . .	Thurs.
20	Crystal Fount, . . .	274 Cumberland st., . . .	Thurs.
21	Lincoln, . . .	9th st., n. No. 1st, Williamsb'g,	Tues.
38	Franklin, . . .	Third Avenue, cor. 23d st., . . .	Tues.
60	Sparkling Water, . . .	DeKalb Av. c. Walworth st.,	Thurs.
78	Sparkling Drop, . . .	Fulton Av. c. Carlton Av., . . .	Tues.
80	Fulton, . . .	159 Fulton Avenue, . . .	Mon.
88	Ridgewood, . . .	Cor. Fulton & Carlton Avs.,	Wed.
90	Lefferts' Park, . . .	Van Buren st n. Nostrand Av.	Thurs.
94	Rescue, . . .	Cor. Broadway and Myrtle	
		Avenue, E. D., . . .	Tues.
99	Green Point, . . .	Franklin st., near Kent Av.,	
		Green Point, . . .	Mon.
105	Williamsburgh, . . .	South 2d st. n. 4th, E. D., . . .	Mon.
164	Unity, . . .	Third Avenue, cor. 23d st., . . .	Wed.

YORK.

Division.
 Troy.
 msburg.
 New York.
 Clem.
 West 31st St., N. Y.
 Street, New York.
 ork.
 s St., New York.

Division.
 Bride,
 Spence,
 Macdonough,
 Jacobs,
 Eckard,
 tain,

der,
 m,
 n.
 rtis.
 r.

No.	NAME.	Location.	Meet.
187	Eureka, . . .	<i>Brooklyn</i> —Con.	
103	Sylvan Stream, . . .	South 2d st. n. 4th, E. D., 145 Grand st. E. D.,	Wed.
9	Flushing, . . .	Country Divisions.	Thurs.
9	Poughkeepsie, . . .	Flushing, Long Island, Sons of T. Hall, Main street, Poughkeepsie,	Tues.
18	Mount Vernon, . . .	Post Office Building, Mount Vernon,	Fri.
19	Schoharie Valley, . . .	Schoharie, Schoharie Co.,	Mon.
23	Trojan, . . .	Odd-Fellows' Hall, Troy,	Mon.
24	Albany, . . .	588 Broadway, Albany,	Thurs.
25	Font of Hope, . . .	Lansingburg, Rensselaer Co.,	Mon.
28	Wiltwyck, . . .	Kingston, Ulster Co.,	Mon.
29	Farmingdale, . . .	Farmingdale, Long Island,	
30	Bright Prospect, . . .	Saugerties, Ulster Co.,	Sat.
31	Stapleton, . . .	Stapleton, Staten Island,	Tues.
32	Hudson, . . .	Hudson, Columbia Co.,	Tues.
33	Aquehonga, . . .	N. Brighton, Staten Island,	Mon.
35	Quaker Street, . . .	Quaker st., Schenectady Co.,	Tues.
36	La Grangeville, . . .	La Grangeville, Dutchess Co.,	Sat.
37	Amsterdam, . . .	Amsterdam, Montgomery Co.,	Sat.
40	Hyde Park, . . .	Hyde Park, Dutchess Co.,	Wed.
42	Waterford, . . .	Waterford, Saratoga Co.,	Tues.
43	Matteawan, . . .	Matteawan, Dutchess Co.,	Mon.
44	Star of Hope, . . .	Malden, Ulster Co.,	Mon.
45	Wright, . . .	Gallupville, Schoharie Co.,	Sat.
47	Cobleskill, . . .	Cobleskill, Schoharie Co.,	Wed.
48	Suburban, . . .	Flatlands, Kings Co.,	Mon.
49	Crown Point, . . .	Crown Point, Essex Co.,	Mon.
50	North Star, . . .	City of Troy, . . .	Sat.
52	Safe Harbor, . . .	Richmondville, Schoharie Co.,	Mon.
53	Peekskill, . . .	Peekskill, Westchester Co.,	Sat.
54	Molra, . . .	Molra, Franklin Co.,	Tues.
56	Catskill, . . .	Catskill, Greene Co.,	Tues.
57	Iris, . . .	Ellenville, Ulster Co.,	Mon.
58	Dickinson Centre, . . .	Dickinson Cen., Franklin Co.,	Thurs.
59	Horton, . . .	Union Village, Greenwich, Washington Co.,	Tues.
61	Hughsonville, . . .	Hughsonville, Dutchess Co.,	Thurs.
63	Newburg, . . .	Newburg, Orange Co.,	Mon.
64	Yonkers, . . .	Yonkers, Westchester Co.,	Wed.
65	N. E. Union, . . .	Millerton, Dutchess Co.,	Mon.
66	Highland, . . .	Highland, Ulster Co.,	Wed.
67	Rising Star, . . .	Rhinebeck, Dutchess Co.,	Mon.
68	Astoria, . . .	Astoria, Kings Co.,	Tues.
69	Battle Ground, . . .	Schuylerville, Saratoga Co.,	Mon.
70	Keystone, . . .	West Hurley, Ulster Co.,	Thurs.

Location.	Meet.
...-Con.	
4th, E. D.,	Wed.
E. D.,	Thurs.
Divisions.	
g Island,	Tues.
Main street,	
e,	Fri.
dding, Mount	
harlie Co.,	Mon.
ll, Troy,	Mon.
lbanv,	Thurs.
nselaer Co.	Mon.
Co.	Mon.
ng Island,	Sat.
r Co.,	Tues.
Island,	Tues.
a Co.,	Mon.
en Island,	Tues.
etady Co.,	Sat.
tchess Co.	Sat.
omy Co.,	Wed.
ss Co.,	Tues.
a Co.,	Mon.
ss Co.,	Mon.
le Co.,	Sat.
e Co.,	Wed.
	Mon.
Co.,	Mon.
rie Co.	Sat.
r Co.,	Tues.
	Tues.
	Mon.
in Co.	Thurs.
wich,	Tues.
	Thurs.
s Co.,	Mon.
	Wed.
Co.,	Mon.
	Wed.
	Mon.
	Tues.
Co.,	Thurs.

No.	NAME.	Location.	Meet.
<i>Country Divisions—Con.</i>			
71	Irving, . . .	Tarrytown, Westchester Co.,	Mon.
72	Fishkill, . . .	Fishkill, Dutchess Co.,	Wed.
73	Reilant, . . .	N. Greenbush, Rensselaer Co.,	Thurs.
74	Cold Spring, . . .	Cold Spring, Putnam Co.,	Mon.
75	Coxsackie, . . .	Coxsackie, Greene Co.,	Wed.
76	Saratoga, . . .	Saratoga Springs, . . .	Mon.
77	Sewall, . . .	Stuyvesant Fls, Columbia Co.	Mon.
79	Rockwell, . . .	Athens, Greene Co.,	Mon.
81	Crystal Stream,	Mott Haven, Westchester Co.,	Fri.
82	Concordia, . . .	Shokan, Ulster Co.,	Sat.
83	Minnehaha, . . .	Roudout, Ulster Co.,	Wed.
84	Fort Edward, . . .	Fort Edw'd, Washington Co.	Fri.
85	Susquehannah,	Bainbridge, Chenango Co	Sat.
86	Aurora, . . .	Guilford, Chenango Co,	Sat.
87	Fidelity, . . .	Masonville, Delaware Co.,	Sat.
89	Crystal Spring,	Melrose, Westchester Co.,	Wed.
91	Neversink, . . .	Port Jervis, Orange Co.,	Mon.
92	Monroe, . . .	Monroe, Orange Co.,	Tues.
93	Walkill, . . .	Middletown, Orange Co.,	Mon.
95	Cambridge, . . .	Cambridge, Washington Co.,	Fri.
96	Capital, . . .	Albany, . . .	Sat.
98	Live Oak, . . .	West Troy, . . .	Wed.
100	Rising Sun, . . .	Corinth, Saratoga Co.,	Sat.
101	Peconic, . . .	Riverhead, L. I.,	Mon.
103	Billy J. Clark,	Glenn's Falls, Warren Co.,	Fri.
104	Crescent, . . .	Crescent, Saratoga Co.,	Tues.
106	Deposit, . . .	Deposit, Broome Co.,	Fri.
107	Unadilla, . . .	Unadilla, Otsego Co.,	Mon.
108	Ninevah, . . .	Ninevah, Broome Co.,	Tues.
109	Coventry, . . .	Coventry, Chenango Co.	Tues.
110	Ondaora, . . .	Highland Falls, Orange Co	Mon.
111	Mount Vision,	Jacksonville, Otsego Co.,	Mon.
112	Ballston Spa,	Ballston, Saratoga Co.,	Tues.
113	Ellsworth, . . .	Mechanicsville, Saratoga Co.	Thurs.
114	Huguenot, . . .	New Paltz, Ulster Co.,	Tues.
115	Tivoli, . . .	Medelln, Dutchess Co.,	Sat.
116	Evening Star, . . .	West Troy, . . .	Wed.
117	Agawam, . . .	Sag Harbor, L. I.,	Tues.
118	Whitestone, . . .	Whitestone, Queens Co.,	Tues.
119	Fort Miller, . . .	Fort Miller, Saratoga Co.,	Sat.
120	Buskirk's Bridge,	Buskirk's Br. Rensselaer Co.	Tues.
121	South East, . . .	Brewster's Sta. Westchester Co.	Tues.
122	Patterson, . . .	Patterson, Putnam Co.,	Tues.
123	Mamaroneck, . . .	Mamaroneck, Westchester Co.	Fri.
124	Fishkill on the Hud.	Fishkill Land, Dutchess Co.	Thurs.
125	Coldwater, . . .	Schenevus, Otsego Co.,	Mon.
126	Portlandville, . . .	Portlandville, Otsego Co.,	Tues.

No.	NAME.	Location.	Meet.
127	Summit, . . .	<i>Country Divisions—Con.</i>	
128	Mount Kisco, . . .	Summit, Schoharie Co.,	Wed.
129	Pleasantville, . . .	Mt. Kisco, Westchester Co.,	Mon.
130	Calcoon, . . .	Pleasantville, Westchester Co.,	Fri.
131	A. Lincoln, (col'd),	North Branch, Sullivan Co.,	Fri.
132	East New York, . . .	Saratoga, Saratoga Co.,	Wed.
133	Pleasant Valley, . . .	East New York, Kings Co.,	Fri.
134	Adirondack, . . .	Pleasant Val., Dutchess Co.	Mon.
135	Silver Fountain, . . .	Luzerne, Warren Co., . . .	Sat.
136	Fountain, . . .	Canajoharie, Broome Co.	Mon.
137	Glenida, . . .	Canajoharie, Montgomery Co.	Sat.
138	Hope, . . .	Carmel, Putnam Co., . . .	Mon.
139	Plattakill, . . .	Greene, Chenango Co., . . .	Fri.
140	Walden, . . .	Plattakill, Ulster Co., . . .	Fri.
141	Chester, . . .	Walden, Orange Co., . . .	Fri.
142	Washingtonville, . . .	Chester, Orange Co., . . .	Tues.
143	Esopus, . . .	Washingtonville, Orange Co.,	Tues.
144	Charlotteville, . . .	Esopus, Ulster Co., . . .	Mon.
145	Pauline, . . .	Charlotteville, Otsego Co.,	Sat.
146	Claverack, . . .	Churchtown, Columbia Co.,	Tues.
147	Wappinger's Falls, . . .	Claverack, Columbia Co.,	Sat.
148	Cayadutta, . . .	Wap'ger's Falls, Dutchess Co.	Tues.
149	Schenectady, . . .	Fonda, Montgomery Co., . . .	Mon.
150	Fort Plain, . . .	Schenectady, Sch'tady Co.,	Mon.
151	Minaville, . . .	Fort Plain, Montgomery Co.,	Thurs.
152	Fort Hunter, . . .	Minaville, Montgomery Co.,	Wed.
153	Glennville, . . .	Ft Hunter, Montgomery Co.,	Tues.
154	Oneonta, . . .	Scotia, Schenectady Co.,	Sat.
155	Elizaville, . . .	Oneonta, Otsego Co., . . .	Mon.
156	Iona, . . .	Elizaville, Columbia Co., . . .	Mon.
159	Milton, . . .	Milton, Ulster Co., . . .	Sat.
160	Laurel Glen, . . .	Long Island City, Kings Co.,	Wed.
161	Warwick, . . .	Chapqueua, Westchester Co.,	Tues.
162	Butternut Valley, . . .	Warwick, Orange Co., . . .	Wed.
163	Schaghticoke, . . .	Butternuts, Otsego Co., . . .	Mon.
165	Cohoes, . . .	Schaghticoke, Rens'laer Co.,	Wed.
166	Jamaica, . . .	Cohoes, Albany Co., . . .	Tues.
167	Ondowa, . . .	Jamaica, Queens Co., . . .	Fri.
168	Huntington, . . .	Salem, Washington Co., . . .	Thurs.
169	Port Jefferson, . . .	Huntington, Long Island, . . .	Wed.
170	Constellation, . . .	Port Jefferson, Long Island, . . .	Wed.
171	Jackson Corners, . . .	Burke, Franklin Co., . . .	Mon.
172	Greenport, . . .	Jackson Corners, Dutch's Co.,	Sat.
173	Binghamton, . . .	Greenport, Long Island, . . .	Tues.
174	Johnsonville, . . .	Binghamton, Broome Co., . . .	Thurs.
175	Amenia, . . .	Johnsonville, Rensselaer Co.,	Wed.
176	Valley Falls, . . .	Amenia, Dutchess Co., . . .	Mon.
		Valley Falls, Rensselaer Co.	Thurs.
			Fri.

Location.	Meet.
...stions—Con.	
...harie Co.,	Wed.
...stchester Co.,	Mon.
...W'chester Co.,	Fri.
...Sullivan Co.,	Wed.
...toga Co.,	Fri.
...k, Kings Co.,	Mon.
...Dutchess Co.,	Mon.
...en Co.,	Sat.
...s, Broome Co.,	Mon.
...ntgom'y Co.,	Sat.
...Co.,	Mon.
...go Co.,	Fri.
...Co.,	Fri.
...Co.,	Fri.
...Co.,	Tues.
...Co.,	Tues.
...range Co.,	Mon.
...sego Co.,	Tues.
...mbia Co.,	Sat.
...bia Co.,	Tues.
...tchess Co.,	Mon.
...ry Co.,	Mon.
...ady Co.,	Thurs.
...mery Co.,	Wed.
...mery Co.,	Tues.
...mery Co.,	Sat.
...Co.,	Mon.
...Co.,	Mon.
...Co.,	Sat.
...ngs Co.,	Wed.
...ter Co.,	Tues.
...ter Co.,	Wed.
...ter Co.,	Mon.
...ter Co.,	Wed.
...ter Co.,	Fri.
...ter Co.,	Thurs.
...ter Co.,	Wed.
...ter Co.,	Wed.
...ter Co.,	Mon.
...ter Co.,	Sat.
...ter Co.,	Tues.
...ter Co.,	Thurs.
...ter Co.,	Wed.
...ter Co.,	Mon.
...ter Co.,	Thurs.
...ter Co.,	Fri.

No.	NAME.	Location.	Meet.
<i>Country Divisions—Con.</i>			
178	New Rochelle,	N. Rochelle, W'tchester Co.	Thurs.
179	Linwood,	Conklinville, Saratoga Co.,	Sat.
180	Meridan,	So. Corinth, Saratoga Co.,	Sat.
181	Titicus Valley,	Purdy's Sta., W'tchester Co.,	Mon.
182	Tribes Hill,	Tribes Hill, Montgomery Co.,	Sat.
183	Pine Bush,	Plue Bush, Orange Co.,	Wed.
184	Fort Covington,	Ft Covington, Franklin Co.,	Tues.
185	Clintondale,	Clintondale, Ulster Co.,	Sat.
186	Glenhelm,	Glenhelm, Dutchess Co.,	Wed.
188	Tremont,	Tremont, Westchester Co.,	Sat.
189	Castleton,	Castleton, Rensselaer Co.,	Fri.
190	Germantown,	Germantown, Columbia Co.,	Tues.
191	Cochecton,	Cochecton, Sullivan Co.,	Tues.
192	Monticello,	Monticello, Sullivan Co.,	Wed.
194	Sing Sing,	Sing Sing, Westchester Co.,	Mon.
195	Green Island,	Green Island, West Troy,	Mon.
196	Warren,	Haverstraw, Rockland Co.,	Mon.
197	West Farms,	West Farms, W'tchester Co.,	Thurs.
198	Hobart,	Hobart, Delaware Co.,	Mon.
199	Cannonville,	Cannonville, Delaware Co.,	Tues.
200	Montgomery,	Montgomery, Orange Co.,	Wed.
201	Seward,	Seward, Schoharie Co.,	Tues.
202	Pawlings,	Pawlings, Dutchess Co.,	Mon.
203	Nyack,	Nyack, Rockland Co.,	Wed.
204	Cornwall,	Cornwall, Orange Co.,	Mon.
205	Mariboro',	Mariboro', Ulster Co.,	Tues.
206	Dew Drop,	Rosendale, Ulster Co.,	Sat.
207	Prattsville,	Prattsville, Green Co.,	Sat.
208	Moshulu,	Moshulu, Westchester Co.,	Fri.
209	Jewett,	Jewett, Greene Co.,	Fri.
210	Jefferson,	Jefferson, Schoharie Co.,	Fri.
211	Hamilton Union,	Guilderland, Albany Co.,	Fri.
212	Roxbury,	Roxbury, Delaware Co.,	Tues.
213	Nil Desperandum,	Port Chester, W'tchester Co.	Tues.
214	Bloomfield,	Bloomfield, Delaware Co.,	Wed.
215	Fort Ann,	Fort Ann, Washington Co.,	Mon.
216	Hartford,	So. Hartford, Wash'ton Co.,	Sat.
217	North Granville,	No. Granville, Wash'ton Co.	Fri.
218	Granville,	Granville, Washington Co.,	Fri.
219	Leeds,	Leeds, Greene Co.,	Wed.
220	South Valley,	South Valley, Otsego Co.,	-
221	Creek Centre,	Creek Centre, Saratoga Co.,	Sat.
222	Hartwick,	Hartwick, Otsego Co.,	Fri.
223	Tompkins Cove,	Tompkins Cove, RockPd Co.,	Fri.
224	Galeville,	Galeville, Ulster Co.,	Fri.
225	Dobbs Ferry,	Dobbs Ferry, W'tchester Co.	Mon.
226	Mizpah,	Jeffersonville, Sullivan Co.,	Tues.

No.	NAME.	Location.	Meet.
227	Whiting's Point,	<i>Country Divisions—Con.</i>	
228	White Plains,	Whiting's Point, Broome Co.	Tues.
229	Centre Village,	White Plains, W'chester Co.,	-
230	Afton,	Centre Village, Broome Co.	Thurs.
231	Windsor,	Afton, Chenango Co.,	Tues.
232	Laurens,	Windsor, Broome Co.,	Tues.
233	Sanford,	Laurens, Otsego Co.,	-
234	Knickerbocker,	Creek Settle'm't, Broome Co.,	-
235	Oswegatchie,	City of Albany,	-
236	North Shore,	Ogdensburg, St. Lawrence Co.	Wed.
237	Evergreen,	Factoryville, Staten Island,	Fri.
238	Middle Hope,	Rexford Flats, Saratoga Co.	Sat.
239	South Dover,	Middle Hope, Orange Co.,	Fri.
240	Patchogue,	South Dover, Dutchess Co.,	Wed.
241	Dover Plains,	Patchogue, Suffolk Co. L. I.	Wed.
242	Sayville,	Dover Plains, Dutchess Co.,	Mon.
243	Blue Point,	Sayville, Suffolk Co.,	Mon.
244	Gulding Star,	Blue Point, Suffolk Co.,	Sat.
245	Queensbury,	Burnt Hills, Saratoga Co.,	Wed.
246	John Brown,	Queensbury, Warren Co.,	Fri.
247	Kayaderoseras,	Lauslingburg,	Wed.
248	Fishkill Plains,	Greenfield C'tre, Sar'ga Co.	Sat.
249	(Colored,)	Fishkill Pl., W'chester Co.	Mon.
250	Invincible,	Middletown, Orange Co.,	-
251	Clarksville,	Yonkers,	Fri.
252	Sandy Hill,	Clarksville, Albany Co.,	Sat.
253	Horicon,	Sandy Hill, Washington Co.	Mon.
254	New Salem,	Horicon, Warren Co.,	-
255	Upper Red Hook,	New Salem, Albany Co.,	Fri.
256	J. A. Andrew, (col.)	Upper Red Hook, Duch. Co.	-
257	Katonah,	Troy,	Thurs.
258	Queens,	Whitlockville, Westch'r Co.	Sat.
259	Verbank,	Brushville, Queens Co.,	Wed.
260	Tuckahoe,	Verbank, Dutchess Co.,	Sat.
261	Harpersfield,	Tuckahoe, Westchester Co.	Wed.
262	Bedford,	Harpersfield, Delaware Co.	Tues.
263	Millbrook,	Bedford, Westchester Co.,	Tues.
264	Stoney Brook,	Mabetsville, Dutchess Co.,	Sat.
265	Southold,	Stoney Brook, Suffolk Co.,	Mon.
266	Mattituck,	Southold, Suffolk Co.,	Sat.
267	Aquebogue,	Mattituck, Suffolk Co.,	Mon.
268	Success,	Up. Aquebogue, Suffolk Co.,	Fri.
269	Galway,	Northville, Suffolk Co.,	Sat.
270	Chatham,	Galway, Saratoga Co.,	Tues.
271	Cross River,	Chat'm 4 Cors., Columbia Co.	Mon.
272	Armonk,	Cross River, Westchester Co.	Mon.
273	Kensico,	Armonk, Westchester Co.,	Fri.
		Kensico, Dutchess Co.,	-

Division.	Meet.
St. Broome Co.	Tues.
Whester Co.,	Thurs.
Broome Co.	Tues.
go Co.,	Tues.
me Co.,	-
go Co.,	-
Broome Co.,	-
Laurence Co.	Wed.
aten Island,	Fri.
Saratoga Co.	Fri.
range Co.,	Sat.
utchess Co.,	Fri.
lk Co. L. I.	Wed.
utchess Co.,	Wed.
Co.,	Mon.
lk Co.,	Mon.
toga Co.,	Sat.
ren Co.,	Wed.
Sarga Co.	Fri.
hester Co.	Wed.
ge Co.,	Mon.
Co.,	Fri.
ngton Co.	Sat.
Co.,	Mon.
y Co.,	Fri.
nch. Co.	-
ch'r Co.	Thurs.
Co.,	Sat.
Co.,	Wed.
Co.,	Sat.
ter Co.	Wed.
are Co.	Tues.
r Co.,	Tues.
ss Co.,	Sat.
Co.,	Mon.
Co.,	Sat.
Mon.	Sat.
k Co.,	Fri.
Co.,	Sat.
Co.,	Tues.
a Co.	Mon.
r Co.	Mon.
Co.,	Fri.
Co.,	-

No.	NAME.	Location.	Meet.
<i>Country Divisions—Con.</i>			
274	Good Ground,	Good Ground, Suffolk Co.,	Wed.
275	Jamesport,	Jamesport, Suffolk Co.,	Fri.
276	Margaretville,	Margaretville, Delaware Co.	-
277	Amityville,	Amityville, Queens Co.,	Fri.
278	Jonesville,	Jonesville, Saratoga Co.,	-
279	Islip,	Islip, Suffolk Co.,	Mon.
280	Wading River,	Wading River, Suffolk Co.,	Tues.
281	United,	Mount Sinai, Suffolk Co.,	Fri.
373	Bellport,	Bellport, Suffolk Co.,	Sat.

NEW JERSEY.

Officers of Grand Division.

- G. W. P., . . Rev. A. G. LAWSON, Perth Amboy.
- G. W. A., . . FRED. WILLIAM KELLY, Mount Holly.
- G. Scribe, . . HENRY B. HOWELL, Trenton.
- G. Treas., . . FRANKLIN DEVEREUX, Bridgeton.
- G. Chap., . . Rev. R. A. CHALKER, Mount Holly.
- G. Con., . . CHRISTOPHER J. DILOUN, New Brunswick.
- G. Sent., . . WILLIAM H. BODINE, Williamstown.
- P. G. W. P., GEORGE H. HICK, Philadelphia, Pa.

Representatives Elect to National Division.

- | | |
|---|--|
| <p><i>P. G. W. Patriarchs—</i>
 Samuel A. Dobbins,
 Franklin Devereux,
 Darius Wells,
 Pethuel Mason, —
 Stephen B. Ransom, —
 J. Howard Pugh,
 Garner R. Snyder,
 Ephraim Martin,
 J. Loxley Rhees,
 Joel Fithian,
 Ruliff V. Lawrence,
 George H. Hick.</p> <p><i>P. G. W. Associates—</i>
 Frederick B. Betts,</p> | <p>Henry B. Howell, —
 Theodore Collins,
 Benjamin Sleeper,
 John S. Furry.
 Benjamin D. Doremus, —
 William Robins,
 Samuel Clark,
 Simon Lake,
 Thomas E. Roberts.</p> <p><i>G. W. Patriarch—</i>
 A. G. Lawson.</p> <p><i>G. W. Associate—</i>
 Frederick W. Kelly.</p> |
|---|--|

Subordinate Divisions.

No.	NAME.	Location.	Meet.
1	Newark,	Court & Broad sts., Newark,	Fri.
2	Fidelity,	49 Montgomery st. Jersey C.,	Mon.
3	Charity,	102 Broad st., Newark,	Mon.
4	Excelsior,	Odd Fellows' Hall, Trenton,	Mon.
5	Passaic,	Paterson,	Mon.
6	Repaupo,	Repaupo, Gloucester Co.,	Mon.
7	Keyport,	Woodruff's Hall, Keyport,	Tues.
8	Mount Holly,	Temperance Hall, Mt. Holly,	Tues.
9	West Farms,	Farmlagdale, Monm'th Co.,	Fri.
16	Bridgeton,	Bridgeton, Cumberland Co.,	Wed.
17	Salem,	Washington Hall, Salem,	Sat.
18	Atlantic,	Williamstown, Atlantic Co.,	Tues.
23	Williamstown,	Hamnonton, Atlantic Co.,	Mon.
24	Rescue,	Williamstown, Camden Co.,	Mon.
25	Howard,	South Amboy,	Fri.
26	America,	Odd Fel. Hall, N. Brunswick,	Fri.
27	Lincoln,	Temperance Hall, Mt. Holly,	Wed.
28	Phillipsburg,	Library Hall, Elizabeth,	Tues.
32	Good Samaritan,	Phillipsburg, Warren Co.,	Tues.
33	Plainfield,	Perth Amboy, Middlesex Co.,	Fri.
35	Reconstruction,	Odd Fellows' Hall, Plainfield,	Tues.
36	Cedarville,	Gloucester City, Plainfield,	Mon.
37	Newton,	Cedarville, Cumberland Co.,	Wed.
38	Star of Hope,	Newton, Sussex Co.,	Thurs.
39	Morning Star,	Cor. First & Franklin sts.,	Fri.
41	Columbia,	Elizabethport,	
43	Stet,	Clarksville, Hunterdon Co.,	Mon.
44	Trenton,	Lumberton, Burlington Co.,	Sat.
45	Hope,	Odd Fel. Hall, N. Brunswick,	Thurs.
46	Stillwater,	Temperance Hall, Trenton,	Thurs.
47	Bloomfield,	Millville, Cumberland Co.,	Mon.
48	Sparta,	Stillwater, Sussex Co.,	Fri.
49	Stanhope,	Bloomfield, Essex Co.,	Sat.
50	Siloam,	Sparta, Sussex Co.,	Sat.
51	Bergen,	Stanhope, Sussex Co.,	Wed.
52	Condict,	Vincentown, Burlington Co.,	Tues.
53	Morning Star,	Hackensack, Bergen Co.,	Mon.
54	Raritan,	Clinton & Broad sts. Newark,	Wed.
55	Elizabeth,	Pennsgrove, Salem Co.,	Fri.
56	Rahway,	Raritan, Somerset Co.,	Tues.
57	Central,	Library Hall, Elizabeth,	Mon.
58	Montclair,	Union Hall, Rahway,	Wed.
59	Fountain,	Odd Fel. Hall, Elizabethport,	Mon.
60	Parkhurst,	Montclair, Essex Co.,	Wed.
		Toms River, Ocean Co.,	Mon.
		Nichols & Pacific sts. Newark,	Thurs.
			Wed.

Location.	Meet.
sts., Newark,	Fri.
st. Jersey C., Newark,	Mon.
il, Trenton,	Mon.
ster Co.,	Mon.
Keyport,	Tues.
Mt. Holly,	Fri.
nm'th Co.,	Wed.
rland Co.,	Sat.
Salem,	Tues.
ntic Co.,	Mon.
nden Co.,	Fri.
nswick,	Fri.
ft. Holly,	Wed.
beth,	Tues.
n Co.,	Tues.
essex Co.,	Fri.
ainfield,	Tues.
ien Co.,	Mon.
nd Co.,	Wed.
	Thurs.
	Fri.
n sts.,	Mon.
n Co.,	Sat.
n Co.,	Thurs.
wick,	Thurs.
nton,	Mon.
Co.,	Fri.
	Sat.
	Wed.
	Sat.
	Tues.
Co.,	Mon.
rk,	Wed.
	Fri.
	Tues.
	Mon.
	Wed.
rt.	Mon.
	Wed.
	Mon.
	Thurs.
k,	Wed.

No	NAME.	Location.	Meet.
61	Banner, . . .	102 Broad st., Newark,	Tues.
62	Harrison, . . .	Odd Fellows Hall, E. New'k,	Thurs.
63	Hoboken, . . .	Hoboken,	-
64	Greenville, . . .	Greenville, Hudson Co.,	Wed.
65	Bound Brook, . . .	Bound Brook, Somerset Co.,	-
74	Unlon Grove, . . .	Pittstown, Salem Co.,	Sat.
83	Pleasantville, . . .	School-house, Pleasantville, Atlantic Co.,	Fri.
85	Somerville, . . .	Barcalow's Build., Som'ville,	Thurs.
92	Burlington, . . .	Odd Fellows Hall, Burl'gton,	Sat.
96	Bridgeport, . . .	Bridgeport, Gloucester Co.,	Sat.
101	John Brown, . . .	Temperance Hall, Mt. Holly,	Tues.
102	Samuel Aaron, . . .	Temperance Hall, Mt. Holly,	Thurs.
103	Father Abraham, . . .	Mt. Laurel, Burlington Co.,	-
104	Emancipator, . . .	Temperance Hall, Trenton,	Thurs.
105	Nathaniel Lyon, . . .	102 Broad st., Newark,	Wed.
106	Ark of Safety, . . .	Library Hall, Elizabeth,	Thurs.
107	Robert Evans, . . .	Burlington,	-
108	Mount Zion, . . .	New Brunswick, . . .	-
109	Friendship, . . .	Odd Fellows' Hall. Wither- spoon st., Princeton,	Thurs.
116	New Providence, . . .	New Providence, Essex Co.	Tues.
121	Washington, . . .	Clinton & Broad sts. Newark,	Mon.

MARYLAND.

Officers of Grand Division.

- G. W. P., . . . JAMES YOUNG, 114 W. Baltimore St., Baltimore
- G. W. A., . . . WILLIAM H. DORSEY, Elk Ridge Landing.
- G. Scribe, . . . Rev. THOMAS MYERS, 75 McCulloh St., Balt.
- G. Treas., . . . E. W. BRIDING, Crownsville.
- G. Chap., . . . Rev. WILLIAM S. EDWARDS, Baltimore.
- G. Con., . . . WILLIAM H. PERKINS, Hancock.
- G. Sent., . . . WILLIAM MCCOY, Baltimore.
- P. G. W. P., BENJAMIN E. GANTT, Millersville.

DIRECTORY OF S. OF T. OF N. A.

Representatives Elect to National Division.

P. G. W. Patriarchs—
 James Young,
 E. W. Briding,
 B. E. Ganft,
 R. T. Smith,
 Jacob H. Christ.
P. G. W. Associates—
 L. D. Taylor,

S. A. Ewalt, —
 N. Baker,
 George K. Stone.
G. W. Associate—
 William H. Dorsey.
P. G. Scribes—
 Rev. David Henderson,
 Rev. Thomas Myers. —

Subordinate Divisions.

No.	NAME	Location.	Meet.
1	Baltimore,	Baltimore City,	
2	Monumental,	Baltimore City,	Mon.
3	Monroe,	Baltimore City,	Fri.
5	Empire,	Baltimore City,	Wed.
7	Towson,	Baltimore City,	Mon.
8	Friendship,	Towson, Baltimore Co.,	Mon.
10	Annapolis,	Elkton, Cecil Co.,	Fri.
11	Patapsco,	Annapolis, Anne Ar'del Co.,	Mon.
12	Savage,	Ellicott City, Howard Co.,	Fri.
14	Lisbon,	Savage, Howard Co.,	Mon.
21	Mechanicstown,	Lisbon, Howard Co.,	Sat.
22	Thistle,	Mechanicstown, Freder'k Co.,	Wed.
24	Star,	Thistle Factory, Baltim. Co.,	Sat.
27	Newington,	Hancock, Washington Co.,	Sat.
38	Triumphant,	Baltimore City,	Sat.
42	Carroll,	Elkridge Land'g, How'd Co.,	Wed.
48	Spring Grove,	Westminster, Carroll Co.,	Sat.
59	Cambridge,	Riverton, Wicomico Co.,	Sat.
69	Vienna,	Cambridge, Dorchester Co.,	Wed.
74	Broad Neck,	Vienna, Dorchester Co.,	Fri.
90	St. Michael's,	St. Margaret, A. Arundel Co.,	Thurs.
100	Hopewell,	St. Michael's, Talbot Co.,	Sat.
108	Severn,	Hopewell Cross Roads, Hart- ford Co.,	Mon.
110	Mariner,	Millersville,	Sat.
130	Brothers' Relief,	Jacksonville, A. Arundel Co.,	Sat.
148	Lingapore,	Unlontown, Somerset Co.,	Thurs.
152	Mountain Dew,	Unlontown, Carroll Co.,	Sat.
155	Prospect,	Woodville, Frederick Co.,	Sat.
161	Land and Sea,	Reisterstown, Baltimore Co.,	Sat.
163	Jefferson,	Baltimore City,	Wed.
		Jefferson, Frederick Co.,	Thurs.
			Mon.

G. W.
 G. W.
 G. Sc
 G. T.
 G. Ch
 G. Co
 G. Se
 P. G.

 P. G.
 F.
 R.
 W.
 Jo
 F.
 Jo
 W.
 A.
 D.
 J.
 T.
 A.
 B.
 Lo
 W.
 P. G.
 E.
 W.
 Th

tional Division.

Ewalt, —
ker,
e R. Stone.
ssociate—
m H. Dorsey.
rbes—
avid Henderson,
omas Myers. —

PENNSYLVANIA.

Officers of Grand Division.

- G. W. P., . . . NATH'L M. PRATT, 802 North Tenth St., Phila.
- G. W. A., . . . WILLIAM DAVIS, 341 Queen St., Philadelphia.
- G. Scribe, . . . JOHN C. MAGUIGAN, 118 So. 7th St., Phila.
- G. Treas., . . . ABRAHAM BROWN, 709 Market St., Philadelphia.
- G. Chap., . . . Rev. CHARLES COOKE, Manayunk.
- G. Con., . . . PERRY H. LEVERING, 1217 Wallace St., Phila.
- G. Sent., . . . WILLIAM TANNIER, 1224 Corn St., Philadelphia.
- P. G. W. P., Rev. WESLEY C. BEST, 985 No. 5th St., Phila.

Representatives Elect to National Division.

- | | |
|---|--|
| <p>P. G. W. Patriarchs—
F. A. Fleckardt,
R. M. Foust, —
Wyndham H. Stokes,
John C. Sims, —
F. A. Van Dyke,
John H. Lewars,
William A. Duff, —
A. Briggs,
D. F. Conde,
J. E. Bolton,
William W. Axe,
T. R. Davis,
A. H. Chandler,
B. F. Dennisson,
Louis Wagner, —
Wesley C. Best.</p> <p>P. G. W. Associates—
E. F. Bleck,
William B. Wood,
Thomas Steel,</p> | <p>M. A. Ross,
Lewis Hanby,
Joseph P. Houck,
Charles S. Massey,
John S. Mann,
J. M. Lyle,
Ben. Lochman,
H. R. Parmenter, —
W. S. Chillson,
Kendall Brooks,
J. M. Hopper,
B. F. Custer,
Jacob Wentz.</p> <p>G. W. Patriarch—
Nathaniel M. Pratt. —</p> <p>G. W. Associate—
William Davis.</p> <p>P. G. Scribes—
William Nicholson,
Joseph W. Martin,
John C. Magulgan.</p> |
|---|--|

Meet.	
Mon.	
Fri.	
Wed.	
Mon.	
Mon.	more Co.,
Fri.	rdel Co.,
Mon.	ard Co.,
Fri.	
Sat.	
Wed.	
Sat.	ler'k Co.
Sat.	tim. Co.
Sat.	on Co.,
Wed.	
Sat.	w'd Co.
Sat.	Co.,
Wed.	Co.,
Fri.	er Co.,
Thurs.	o.,
Sat.	el Co.,
Mon.	Co.,
Sat.	Hart-
Sat.	Co.,
Sat.	Co.,
Thurs.	
Sat.	
Sat.	
Sat.	
Wed.	Co.
Thurs.	
Mon.	

Subordinate Divisions.

No.	NAME.	Location.	Meet.
1	Philadelphia, .	N. E. c. 10th & Chestnut sts., Philadelphia,	Thurs.
2	Washington, .	N. E. c. 10th & Chestnut sts., Philadelphia,	Wed.
3	Abraham Lincoln, .	Philadelphia,	Sat.
4	Pennsylvania, .	Wilkesbarre, .	Wed.
5	Franklin, .	Booth's Cor., Delaware Co.,	Sat.
6	Penn, .	S. of T. Hall, 2d b. Queen, Phil.	Thurs.
7	Dushore, .	Broad st., Bethlehem, .	Sat.
8	Bethlehem, .	Dushore, Sullivan Co.,	Fri.
9	Lehigh, .	Broad st., Bethlehem, .	Mon.
11	Loyal, .	Allentown, .	Sat.
12	Union, .	Mahanoy City, .	Tues.
13	Star of Hope, .	S. W. c. 2d & Brown sts., Phil.,	Fri.
14	Jeddo, .	Lombard st., ab. 13th, Phil.,	Wed.
15	Hazleton, .	Jeddo, Luzerne Co.,	Sat.
16	Eureka, .	Hazleton, Luzerne Co.,	Fri.
17	Stockton, .	Shamokin, .	Mon.
19	Friendship, .	Stockton, Luzerne Co.,	Sat.
20	Crystal Fount, .	S. W. c. 12th & Filbert, Phil.,	Tues.
21	Hierophant, .	N. E. c. 10th & Chestnut sts., Philadelphia,	Tues.
22	Rising Star, .	S. E. c. 9th & Spr'g Gard., Phil.	Mon.
23	Keystone, .	Dunmore, Luzerne Co.,	Wed.
25	Colorado Star, .	Catasauqua, Lehigh Co.,	Sat.
26	Mauch Chunk, .	Mahanoy Plane, Sc'ykill Co.	Mon.
27	Standing Stone, .	Mauch Chunk, Carbon Co.,	Thurs.
28	Wyoming, .	Huntingdon, Hunt'gdon Co.,	Thurs.
29	Welcome, .	Wilkesbarre, Luzerne Co.,	-
30	Hand in Hand, .	Trenton Av. & York st., Phil.,	Mon.
31	Crystal Spring, .	S. W. c. 6th & Girard Av. Phil.,	Thurs.
32	Weatherly, .	Alleghany City, Allegh'y Co.,	Thurs.
33	Harrisburg, .	Weatherly, Luzerne Co.,	Sat.
34	Progressive, .	Packer st., Harrisburg,	Mon.
35	Middletown, .	Middletown, .	Fri.
36	Fredonia, .	N. W. c. 2d & Poplar sts., Phil.	Tues.
37	Star, .	Airy st., Norristown,	Tues.
38	Milnesville, .	Milnesville Luzerne Co.,	Sat.
41	Phoenix, .	Penn, ab. 6th st., Reading,	Mon.
42	Pittsburg, .	Cor. 7th & Grant sts. Pittsb'g,	Thurs.
43	Morning Light, .	2d st., b. Queen, Phila.,	Thurs.
44	Hope, .	Beaver Meadows, Carbon Co.	Thurs.
45	Alleghany, .	Alleghany City, Allegh'y Co.	Thurs.
46	Perseverance, .	Centre st., Ashland, Sch'l Co.	Thurs.
47	Lancaster, .	East King st., Lancaster, .	Thurs.

ns.
lon.
Meet.
Thurs.
Wed.
Sat.
Thurs.
Sat.
Fri.
Mon.
Sat.
Tues.
Fri.
Wed.
Sat.
Fri.
Mon.
Sat.
Tues.
Tues.
Mon.
Wed.
Sat.
Mon.
Thurs.
Thurs.
Sat.
Mon.
Thurs.
Thurs.
Thurs.
Thurs.

No.	NAME.	Location.	Meet.
48	Slatington, . . .	Slatington, Lehigh Co.,	Thurs.
49	Fraternal, . . .	2d st., below Queen, Phila.,	Mon.
50	Silver Spring, . . .	Locust st., ab. Broad, Phila.,	Fri.
51	Meadville, . . .	Meadville, . . .	-
52	Pottsville, . . .	Pottsville, Schuylkill Co.,	Mon.
53	Conshohocken, . . .	Conshohocken, Montg'y Co.,	-
54	Manayunk, . . .	Levering, ab. R. R., Manay'k,	Mon.
55	Frankford, . . .	Main st., Frankford, . . .	Wed.
56	Chestnut Hill, . . .	Chestnut Hill, . . .	Thurs.
57	Germantown, . . .	Mill st. n. Main, Germant'wn,	Mon.
59	Kensington, . . .	Allen, ab. Frank'd R'd, Phil.	Thurs.
61	Sybertsville, . . .	Sybertsville, Luzerne Co., . .	-
62	Milford, . . .	Milford, Somerset Co., . . .	-
63	Stroudsburg, . . .	Stroudsburg, . . .	-
64	Fountain, . . .	Philadelphia, . . .	Wed.
65	West Branch, . . .	Williamsport, Lycoming Co.	Thurs.
66	Morning Star, . . .	S. E. c. 9th & Spr'g Gard. Phil.	Fri.
68	Bristol, . . .	Bristol, Bucks Co., . . .	Tues.
69	Railroad, . . .	37th & Market sts., Phila., . .	Tues.
70	Evening Star, . . .	N. W. c. 38 & Market sts. Phil.,	Thurs.
71	Sharp Mountain, . . .	Palo Alto, Schuylkill Co., . .	Tues.
72	Eldred, . . .	Eldred, . . .	Sat.
73	Big Spring, . . .	Newville, . . .	-
74	Hulmeville, . . .	Hulmeville, Bucks Co., . . .	Wed.
75	Rescue, . . .	Kinrossing, Phila., . . .	Fri.
78	Tuscarora, . . .	Tuscarora, Schuylkill Co., . .	Fri.
79	United, . . .	Minersville, Schuylkill Co., . .	Thurs.
84	Highland, . . .	Ebensburg, Cambria Co., . . .	Sat.
91	Plymouth, . . .	Plymouth, Luzerne Co., . . .	Fri.
99	Unity, . . .	Freemans'b'g, N'thamp'n Co.	Sat.
100	Phoenixville, . . .	Phoenixville, Chester Co., . .	Mon.
103	Towanda, . . .	Towanda, Bradford Co., . . .	Tues.
111	Downingtown, . . .	Downingtown, Chester Co., . .	Tues.
115	Laurel Leaf, . . .	Milesburg, Centre Co., . . .	Tues.
121	Reliance, . . .	Port Carbon, Schuylkill Co., . .	Tues.
122	Falling Spring, . . .	Chambersburg, Franklin Co., . .	Fri.
125	Radiant Star, . . .	Coatsville, Chester Co., . . .	-
138	Tullytown, . . .	Tullytown, Bucks Co., . . .	Sat.
144	Bath, . . .	Bath, Northampton Co., . . .	Mon.
153	Spring Mountain, . . .	Jeanesville, Luzerne Co., . . .	Sat.
158	Atlantic, . . .	Mariners' Bethel, Front st., below Christian, Phila., . . .	Wed.
173	Olney, . . .	Olney, 22d Ward, . . .	Sat.
175	Milestown, . . .	Milestown, . . .	Tues.
177	Fort Duquesne, . . .	Alleghany City, Allegh'y Co.	Tues.
205	Excelsior, . . .	505 Chestnut st., Phila., . . .	Thurs.
211	Rio Grande, . . .	Providence, Luzerne Co., . . .	Wed.

No.	NAME.	Location.	Meet.
214	Adams,	Gettysburg, Adams Co.,	-
244	Fidelity,	Schuylkill Hav'n, Schuyl. Co.	-
283	Scranton,	Scranton, Luzerne Co.,	Tues.
311	Altoona,	Altoona,	Fri.
334	Great Western,	Cor. 10th & South sts., Phil.,	Thurs.
341	Enterprise,	Tamaqua,	Wed.
361	Saucon,	Friedensville, Lehigh Co.,	Sat.
364	Circassian,	Sugar Grove,	Tues.
365	Wellsboro',	Wellsboro', Tlago Co.,	Wed.
380	Jordan,	Allentown, Lehigh Co.,	Wed.
383	Eulalia,	Coudersport, Potter Co.,	Mon.
385	Ark of Safety,	2d & Poplar sts., Phila.,	Sat.
391	South Whitehall,	Allentown, Lehigh Co.,	Thurs.
420	Smethport,	Smethport, McKean Co.,	Sat.
430	Lykens,	Lykens, Dauphin Co.,	Sat.
464	Addison,	Addison, Somerset Co.,	Fri.
458	Ulysses,	Lewisville, Potter Co.,	Fri.
544	St. Clair,	St. Clair, Schuylkill Co.,	Mon.

CONNECTICUT.

Officers of Grand Division.

- G. W. P., . . . Rev. A. N. BENEDICT, Bridgeport. —
 G. W. A., . . . BURGESS A. BATCHELOR, New Haven.
 G. Scribe, . . . A. WILSON HOLMES, 138 College St., N. Haven.
 G. Treas., . . . E. B. GIBBUD, Waterbury.
 G. Chap., . . . Dea. GEORGE F. SMITH, New Haven.
 G. Con., . . . HENRY E. BATCHELOR, Ansonia.
 G. Sent., . . . JOHN O. PAGE, Monroe.
 P. G. W. P., T. C. BUSH, New Haven.

Representatives Elect to National Division.

P. G. W. Patriarchs—

Asa Hill,
George F. Smith,
D. W. Lathrop,
E. W. Taylor,
T. H. L. Talcott,
H. H. Dickinson,
I. A. Mattoon,
George Stone,
I. Simmons,
Wales French,
E. P. Thompson,
W. W. Lee,
T. C. Bush.

P. G. W. Associates—
George H. Fowler,

Sherman Stevens,
N. Sherwood,
E. B. Gibbud,
John McCarthy,
J. M. Wadsworth,
J. B. Baldwin,
S. O. Canfield.

G. W. Patriarch—

Rev. A. N. Benedict.

G. W. Associate—

Burgess A. Batchelor,
P. G. Scribes—
R. P. Cowles,
H. P. Dibble.

Location.	Meet.
Stams Co.,	-
n, Schuyl. Co.	Tues.
rne Co.,	Fri.
h sts., Phil.,	Thurs.
hgh Co.,	Wed.
o Co.,	Sat.
h Co.,	Tues.
er Co.,	Wed.
Phila.,	Mon.
h Co.,	Sat.
an Co.,	Thurs.
Co.,	Sat.
Co.,	Fri.
Co.,	Fri.
l Co.,	Mon.
	Fri.

Subordinate Divisions.

No.	NAME.	Location.	Meet.
1	Washington, . . .	Danbury,	Wed.
2	Concord,	Norwalk,	Fri.
5	Harmony,	New Haven,	Thurs.
7	Bridgeport,	Bridgeport,	Mon.
8	Hand in Hand,	Meriden,	Wed.
10	Friendship,	New Canaan,	Sat.
12	Putnam Hill,	Mianus,	Wed.
13	Excelsior,	Naugatuck,	Mon.
14	Mattaluck,	Waterbury,	Tues.
16	Crystal Fount,	Birmingham,	Wed.
19	Hartford,	Hartford,	Fri.
23	Friendly,	Westville,	Tues.
25	Life Boat,	Monroe,	Tues.
35	Star of Hope,	Stratford,	Thurs.
48	Housatonic,	New Milford,	-
59	Wyoming,	South Manchester,	Wed.
73	New Era,	Ansonia,	Mon.
86	Fidelity,	New Haven,	Mon.
88	South Meadow,	Hartford,	Tues.
89	Wappaquassett,	Woodstock,	-
90	Purity,	Stamford,	Thurs.

T.
ven.
N. Haven.

MASSACHUSETTS.

Officers of Grand Division.

- G. W. P., . . . JONATHAN BUTTERFIELD, Neponset.
 G. W. A., . . . WILLIAM GILLEY, Jr., Marblehead.
 G. Scribe, . . . BENJ. R. JEWELL, 36 Washington St., Boston.
 G. Treas., . . . DAVID S. TARR, Boston.
 G. Chap., . . . Rev. MILES SANFORD, North Adams.
 G. Con., . . . JOSEPH A. FANCY, Boston.
 G. Sent., . . . DAVID RILEY, Boston.

Representatives Elect to National Division.

- | | |
|-----------------------------|-------------------------|
| <i>P. G. W. Patriarchs—</i> | Charles W. Slack, |
| William R. Stacy, | Edward H. Starbuck, |
| Stephens Baker, | Thomas Chubbuck, |
| Convers L. McCurdy, | Watson B. Hastings, |
| Samuel W. Hodges, | John I. Baker, |
| Henry D. Cushing, | Frederic H. Henshaw, |
| John W. T. Stodder, | Edwin Faxon, |
| Charles Freeman, | Edwin Thompson, |
| Samuel A. B. Bragg, | Solomon B. Stebbins, |
| Hiram Van Campen, | Samuel Kelley, |
| James F. Almy, | George R. Johnstone, |
| William Mecorney, | James H. Roberts, |
| Thomas Wilson, | Frederic Goodfellow, |
| Samuel T. Cobb, | John B. Fisk, |
| William H. Dunn, | George Vincent. |
| Isaac W. May, | <i>G. W. Patriarch—</i> |
| Benjamin R. Jewell. | Jonathan Butterfield. |
| <i>P. G. W. Associates—</i> | <i>G. W. Associate—</i> |
| David S. Tarr, | William Gilley, Jr. |

Subordinate Divisions.

ETTS.

ponset.
head.
ton St., Boston.

dams.

Division.

ack,
arbucks,
buck,
stings,

enshaw,

on,
bbins,

stone,
ts,
llow,

held.

No.	NAME.	Location.	Meet.
2	Henfield, . . .	Salem,	Thurs.
3	Washington, . .	Marblehead,	Mon.
4	Silver Spring, .	Boston,	Thurs.
6	Franklin,	Beverly,	Tues.
7	Charity,	Mansfield,	Fri.
8	Union,	East Cambridge,	Thurs.
9	Excelsior,	Chelsea,	Tues.
10	Abousett,	Saugus,	Sat.
11	Phoenix,	Weymouth,	Wed.
12	Nonantum,	Newton Lower Falls,	Tues.
13	Mutual,	Port Norfolk,	Fri.
14	Lincoln,	Boston,	Wed.
15	Neholden,	Scituate,	Thurs
16	Crystal Fount, .	Boston,	Fri.
17	Commonwealth, .	East Boston,	Tues.
18	Island Home, . .	East Boston,	Fri.
19	Friendship,	North Weymouth,	Tues.
21	Gibson,	Dorchester,	Mon.
22	Evening Star, . .	Charlestown,	Wed.
23	Crystal Wave, . .	South Boston,	Fri.
24	Eureka,	Charlestown,	Tues.
25	Howard,	Waltham,	Mon.
26	Riverdale,	Riverdale,	Wed.
28	Star of Hope, . .	Stoneham,	-
29	Abraham Lincoln,	Salem,	Wed.
30	Blue Hill,	Milton Lower Mills,	Wed.
31	Assinippi,	West Scituate,	Fri.
32	Old Bay State, . .	Boston,	Wed.
34	Assawampsett, . .	Middleborough,	Mon.
35	Massapoag,	South Canton,	Tues.
36	Pentucket,	Georgetown,	Mon.
38	Charles River, . .	Cambridgeport,	Mon.
39	Worcester,	Worcester,	Thurs.
40	General Howard, .	South Danvers,	Mon.
43	Fairmount,	Hyde Park,	Mon.
44	Enhakkore,	East Rauldolph,	Fri.
45	Roxbury,	Roxbury,	Mon.
47	Liberty Tree, . . .	Boston,	Thurs.
48	Indian Head, . . .	South Hanson,	Wed.
49	Home,	Abington,	Fri.
52	Good Samaritan, .	Lynn,	Mon.
54	New Star,	Athol,	Tues.
55	Golden Star, . . .	Boston,	Wed.
56	Radiant Star, . . .	Boston,	Sat.

No.	NAME.	Location.	Meet.
57	Woronoco,	Westfield,	
58	Concordia,	Springfield,	Fri.
59	Mishawum,	Woburn,	Wed.
61	Satuit,	Scituate,	Sat.
62	Monooksnock,	Leominster,	Thurs.
63	Oceanic,	Boston,	Mon.
65	Wyoma,	Lynn,	Wed.
66	King Phillip,	South Scituate,	Wed.
67	Merrimac,	Amesbury Mills,	Mon.
68	North Star,	West Lynn,	Thurs.
69	Morning Star,	Sheldonville,	Thurs.
70	Mechanics,	Stoughton,	Fri.
71	Massachusetts,	Boston,	Sat.
72	Wakefield,	Hudson,	Mon.
73	Quincy Stone,	Quincy,	Thurs.
76	American,	Boston,	Mon.
77	Fraternal,	West Abington,	Tues.
78	Beecher,	Marblehead,	Mon.
81	Shawsheen,	Ballardvale,	Mon.
83	Indian Rock,	Franklin,	Fri.
84	Phillips,	Salem,	Wed.
85	Annawon,	Hanson,	Fri.
86	Pierce,	Brookline,	Tues.
87	Acushnet,	Brookline,	Thurs.
90	Caledonia,	New Bedford,	Mon.
92	Speedwell,	Boston,	Tues.
95	Fiskdale,	East Weymouth,	Sat.
96	Cape Cod,	Fiskdale,	Mon.
99	Sumner,	Harwich,	Sat.
100	Winneconnet,	North Abington,	Fri.
104	Massasoit,	Norton,	Wed.
106	Narraganset,	Fall River,	Wed.
108	Wareham,	Taunton,	Wed.
112	Essex,	Wareham,	Mon.
114	Hopkinton,	Newburyport,	Sat.
115	Granite,	Hopkinton,	Mon.
117	Rainbow,	Fitchburg,	Wed.
119	Noquachuck,	Worcester,	Wed.
120	Hope,	Westport,	Mon.
130	Singletary,	West Medway,	Wed.
135	Wankinco,	Sutton,	Wed.
137	Prospect Hill,	South Carver,	Tues.
138	Edw. Hopkins,	Waltham,	Thurs.
139	Well-Spring,	Woodville,	Mon.
140	Prospect,	E. Bridgewater,	Tues.
		Raynham,	Mon.
			Wed.

Con.	Meet.
.	Fri.
.	Wed.
.	Thurs.
.	Sat.
.	Mon.
.	Wed.
.	Wed.
.	Mon.
.	Thurs.
.	Fri.
.	Sat.
.	Mon.
.	Thurs.
.	Mon.
.	Tues.
.	Mon.
.	Fri.
.	Wed.
.	Fri.
.	Tues.
.	Thurs.
.	Mon.
.	Tues.
.	Sat.
.	Mon.
.	Sat.
.	Fri.
.	Wed.
.	Wed.
.	Wed.
.	Mon.
.	Sat.
.	Mon.
.	Wed.
.	Wed.
.	Tues.
.	Thurs.
.	Mon.
.	Tues.
.	Mon.
.	Wed.

No.	NAME.	Location.	Meet.
141	Onamog.	Marlborough,	Fri.
142	Hiawatha,	Bolton,	Fri.
147	Green River,	South Easton,	Mon.
148	Plymouth Rock,	Plymouth,	Wed.
150	Unity,	Cambridgeport,	Thurs.
151	Sparkling Water,	West Wareham,	Mon.
156	Perry,	Groveland,	Wed.
165	Corner Stone,	Hingham,	Fri.
175	New Era,	Boston,	Mon.
176	Washingtonian,	Worcester,	Fri.
182	John Brown,	Boston,	Mon.
184	Grey Lock,	North Adams,	Wed.
185	Cascade,	Huntington,	Mon.
186	Chester,	Chester,	Tues.
187	Somerset,	Somerset,	Fri.
188	Guiding Star,	Chicopee Falls,	Wed.
189	Family Circle,	Springfield,	Mon.
190	Elizabeth Pool,	Weir Village,	Fri.
193	Wachusett,	Westminster,	Wed.
194	Winnisimmet,	Chelea,	Wed.
196	Feltonville,	Feltonville,	Thurs.
198	Golden Eagle,	Lawrence,	Thurs.
199	Highland,	North Prescott,	Fri.

MAINE.

Officers of Grand Division.

- G. W. P., . . Rev. L. J. FLETCHER, Gardiner.
- G. W. A., . . E. H. CASS, Bangor.
- G. Scribe, . . M. L. STEVENS, Portland.
- G. Treas., . . JOHN S. KIMBALL, Bangor.
- G. Chap., . . Rev. C. T. NORCROSS, Charleston.
- G. Con., . . . J. C. BLAGDEN, Carmel.
- G. Sent., . . . JOSEPH SURRY, Castine.
- P. G. W. P., B. F. TALLMAN, Richmond.

*Representatives Elect to National Division.**P. G. W. Patriarchs—*

Joshua Nye,
N. G. Hichborn,
D. B. Randall,
Z. Pope Vose,
B. F. Tallman,
J. J. Bell,
Neal Dow,
J. B. Thorndike,
J. S. Kimball,
E. Jones,
E. W. Jackson.

P. G. W. Associates—

S. I. Roberts,
C. W. Coffin,
A. J. Potter,
L. T. Boothby,
D. P. Thompson.
G. W. Patriarch—
L. J. Fletcher. —
G. W. Associate—
E. H. Cass.
P. G. Scribe—
H. K. Morrell. —

Subordinate Divisions.

No.	NAME.	Location.	Meet.
2	Franklin,	Augusta,	
3	Warren,	Gardiner,	
4	Good Will,	La Grange,	Mon.
6	Dirigo,	Somerville,	Sat.
7	Bath,	Bath,	Sat.
8	Neguemkeag,	Vassalboro,	Wed.
9	Long Reach,	Bath,	Sat.
11	Holden,	Holden,	Sat.
12	Star of Hope,	Surry,	Mon.
13	Ticonic,	Waterville,	Sat.
14	Bangor,	Bangor,	Sat.
15	Oasis,	Ellsworth,	Fri.
16	East Dixfield,	East Dixfield,	Thurs
17	Strong,	Strong,	Mon.
19	Pownalborough,	Dresden Mills,	Tues.
20	Brunswick,	Brunswick,	Fri.
21	Seaside,	Georgetown,	Sat.
24	Bowdoinham,	Bowdoinham,	Mon.
25	Topsham,	Topsham,	Tues.
26	Westport,	Westport,	Mon.
28	Dixfield,	Dixfield,	Tues.
32	Bethesda,	North Sidney,	Sat.
34	Bagaduce,	Castine,	Tues.
35	Wilton,	Wilton,	
37	Unity,	Unity,	Mon.
			Fri.
			Sat.

No.
40
4F
56
51
52
59
65
95
104
115
121
124
140
151
160
174
177
182
205

G. W.
G. W.
G. Se
G. Tr
G. Ch
G. Co
G. Se
P. G.

Associates—
erts,
fin,
ter,
thby,
mpson.
arch—
cher. —
iate—
ell. —

DELAWARE.

No.	NAME.	Location.	Meet.
40	Blue Mountain,	Temple,	Fri.
48	William Penn,	South Durham,	Sat.
56	Cooper's Mills,	Cooper's Mills,	Tues.
51	Richmond,	Richmond,	Wed.
52	Pembroke,	Pembroke,	Sat.
59	Clinton,	Clinton,	Sat.
65	Starks,	Starks,	Sat.
95	Portland,	351 1/2 Congress st., Portland,	Fri.
104	Mount Waldo,	Winterport,	Mon.
115	Star in the East,	Calais,	Tues.
121	Canton Mills,	Canton Mills,	Sat.
124	Prospect,	Stockton,	Fri.
140	Sidney,	Sidney,	Sat.
151	Hyperion,	Rockland,	Sat.
160	Phoenix,	Waldo,	Tues.
174	Fort Fairfield,	Fort Fairfield,	Tues.
177	Salut Paul's,	Carmel,	Sat.
182	Belfast,	Belfast,	Thurs.
205	Charleston,	Charleston,	Tues.

Meet.
Mon.
Mon.
Sat.
Sat.
Wed.
Sat.
Mon.
Sat.
Sat.
Fri.
Thurs
Mon.
Tues.
Fri.
Sat.
Mon.
Tues.
Mon.
Tues.
Tues.
Sat.
Tues.
Mon.
Fri.
Sat.

DELAWARE.

Officers of Grand Division.

- G. W. P., . . H. F. PICKELS, Wilmington.
- G. W. A., . . THOMAS W. STIMMELL, Wilmington.
- G. Scribe, . . WILLIAM B. WILMUR, 208 Market St., Wilm'gton.
- G. Treas., . . JAMES C. PICKELS, Wilmington.
- G. Chap., . . H. P. RUMER, Wilmington.
- G. Con., . . . S. J. WOOD, Wilmington.
- G. Sent., . . . C. C. COBURN, Wilmington.
- P. G. W. P., WILLIAM SILVER, Jr., Wilmington.

Representatives Elect to National Division.

P. G. W. Patriarchs—
 M. Lockard,
 Charles Stewart,
 H. F. Pickels,
 J. H. Greenman,
 G. G. Lobdell,
 J. P. Hayes,
 J. C. Pickels,
 R. B. McDonell,
 John Chandler,
 W. M. Price,
 Solomon Hersey,

William Silver, Jr.
P. G. W. Associates—
 R. Galbraith,
 W. M. Horn,
 G. W. Mortimer,
 J. B. Morrison,
 J. Whitelock.
G. W. Associate—
 Thomas W. Stimmell.
P. G. Scribe—
 C. B. Woodward.

Subordinate Divisions.

No.	NAME.	Location.	Meet.
1	Wilmington, .	Wilmington, .	
2	Morning Star, .	Wilmington, .	Thurs.
3	Good Intent, .	Wilmington, .	Wed.
5	Smyrna, .	Wilmington, .	Tues.
8	Aurora, .	Smyrna, .	Mon.
12	Star of Hope, .	Stanton, .	Mon.
13	Progressive, .	Leipsic, .	Mon.
		Delaware City, .	Fri.

TENNESSEE.

Officers of Grand Division.

G. W. P., . . . Dr. GEORGE S. BLACKIE, Nashville.
 G. W. A., . . . JOHN M. SHIVERS, Goodlettsville.
 G. Scribe, . . Dr. JOHN H. CURREY, Nashville.
 G. Treas., . . EDWIN W. ADAMS, Nashville.
 G. Chap., . . Rev. DOUGLAS R. GRAFTON, Chattanooga.
 G. Con., . . . J. W. DASHIELL, Memphis.
 G. Sent., . . . GRANDISON FLETCHER, Shelbyville.
 P. G. W. P., Dr. THOMAS NORMAN, Lebanon.

P. C.
 Is
 Jo
 Jo
 S.
 Jo
 W
 W
 Ar
 Th
 W
 Jo
 E.
 Th
 P. G.
 Is

No.
 1
 2
 4
 5
 6
 7
 8
 9
 10
 11
 12
 13
 15
 15
 16
 17
 18
 19
 20
 21
 22
 23
 24
 25

al Division.

Silver, Jr.
 Associates—
 alth,
 orn,
 rtimer,
 rison,
 ck.
 ate—
 . Stimmell.
 ward.

Representatives Elect to National Division.

P. G. W. Patriarchs—
 Isaac Litton,
 John B. McFerrin,
 John Henry Currey,
 S. S. Hall,
 Joseph S. Carels,
 W. H. Armstrong,
 Washington B. Cooper,
 Thomas J. Halle,
 Anson Nelson,
 W. Bryce Thompson,
 Joseph R. Anderson,
 E. R. Osborne,
 Thomas Norman.
P. G. W. Associates—
 Isaac Paul,

George W. Blakemore,
 John Clendenning,
 W. A. Wherry,
 John Henry Farrar,
 J. L. Sloan,
 Isaac W. Moore,
 J. Valentine Powell.
G. W. Patriarch—
 George S. Blackie.
G. W. Associate—
 John M. Shivers.
P. G. Scribe—
 Madison P. Jones.

	Meet.
.	Thurs.
.	Wed.
.	Tues.
.	Mon.
.	Mon.
.	Fri.

Subordinate Divisions.

No.	NAME.	Location.	Meet.
1	Elysian Grove,	Nashville, Davidson Co.,	Wed.
2	Trenton,	Trenton, Gibson Co., . .	Fri.
4	Springfield, . . .	Springfield, Robertson Co.,	Fri.
5	Nelson,	Centreville, Hickman Co.,	Sat.
6	Lookout,	Chatanooga, Hamilton Co.,	Fri.
7	Union,	Carthage, Smith Co., . .	Sat.
8	Graham,	Pinewood, Hickman Co.,	Sat.
9	Red River,	Adams Sta., Robertson Co.,	Sat.
10	Rome,	Rome, Smith Co.,	Sat.
11	Bluff City,	Memphis, Shelby Co., . .	Wed.
12	Edgefield,	Edgefield, Davidson Co.,	Tues.
13	Harrison,	Harrison, Hamilton Co.,	Sat.
15	Sparta,	Sparta, White Co.,	-
16	Danceyville,	Danceyville, Haywood Co.,	Fri.
17	Bristol,	Bristol, Sullivan Co., . .	-
17	Sullivan,	Union, Sullivan Co., . . .	-
18	Beaver Creek, . . .	Beaver Creek, Sullivan Co.,	Sat.
19	Blountville,	Blountville, Sullivan Co.,	Fri.
20	Hilton's,	Hilton's P. O., Sullivan Co.,	-
21	Holston,	Union Depot, Sullivan Co.,	-
22	Temple,	Nashville, Davidson Co.,	Thurs.
23	Mt. Pleasant, . . .	Mt. Pleasant, Maury Co.,	-
24	Thompson's Chapel,	Nashville, Davidson Co.,	Sat.
25	Savannah,	Savannah, Hardin Co.,	Tues.

oooga.

No.	NAME.	Location.	Meet.
26	Madison,	Madison Sta., Davidson Co.,	Sat.
27	Clarksville,	Clarksville, Montgomery Co.,	Sat.
28	Franklin,	Franklin, Williamson Co.,	Tues.
29	Shelbyville,	Shelbyville, Bedford Co.,	Mon.
30	Tennessee,	Nashville, Davidson Co.,	Fri.
31	Sinking Creek,	Bristol, Sullivan Co.,	Sat.
32	Manchester,	Manchester, Coffee Co.,	Wed.
33	Zion,	Nashville, Davidson Co.,	Sat.
34	Rogersville,	Rogersville, Hawkins Co.,	-
35	Enterprise,	Nashville, Davidson Co.,	Mon.
36	Gibson Wells,	Gibson Co.,	-
37	Morning Star,	Riceville, McMinn Co.,	Thurs.
38	Saundersville,	Saundersville, Sumner Co.,	-
39	Fayetteville,	Fayetteville, Lincoln Co.,	-
40	Model,	Tullahoma, Coffee County,	Wed.
41	Humboldt,	Humboldt, Gibson Co.,	-
42	Cageville,	Cageville, Haywood Co.,	-
43	,	Livingston, Overton Co.,	-
44	Eureka,	Dover, Stewart Co.,	Wed.
45	Shelby,	Memphis, Shelby Co.,	Thurs.
46	Statesville,	Statesville, Wilson Co.,	Sat.
47	Cottage Grove,	Paris, Henry Co.,	Sat.
48	South Memphis,	Memphis, Shelby Co.,	Tues.
49	Lebanon,	Lebanon, Wilson Co.,	Tues.
50	Gallatin,	Gallatin, Sumner Co.,	Sat.
51	Oakwood,	Oakwood, Montgomery Co.,	Sat.
52	Paris,	Paris, Henry Co.,	-
53	Cross Plains,	Cross Plains, Robertson Co.,	-
54	,	-	-
55	Palmyra,	Palmyra, Montgomery Co.,	Tues.
56	Gardner,	Weakley Co.,	Sat.
57	Chelsea,	Memphis, Shelby Co.,	Mon.
58	,	McMinnville, Warren Co.,	-
59	Litton,	Donelson, Davidson Co.,	Mon.
60	Young Men's,	Memphis, Shelby Co.,	Sat.
61	Sulphur Creek,	Davidson Co.,	Sat.
62	Ooltawah,	Ooltawah, Hamilton Co.,	Fri.
63	Morristown,	Morristown, Jefferson Co.,	Mon.
64	New Providence,	N. Prov., Montgomery Co.,	-
65	Mountain,	Winchester, Franklin Co.,	-
66	Dillahunt,	Columbia, Maury Co.,	Sat.
67	Jonesboro',	Jonesboro', Washington Co.,	Fri.
68	Elizabethtown,	Elizabethtown, Carter Co.,	-
69	Meroney,	Vernon, Hickman Co.,	Wed.
70	Gethsemane,	Davidson Co.,	-
71	Milan,	Milan, Gibson Co.,	Fri.
72	Nolensville,	Nolensville, Williamson Co.,	-

	Meet.
son Co.,	Sat.
ery Co.,	Sat.
n Co.,	Tues.
Co.,	Mon.
Co.,	Fri.
o.,	Sat.
Co.,	Wed.
Co.,	Sat.
Co.,	-
Co.,	Mon.
Co.,	Thurs.
Co.,	-
Co.,	-
nty,	Wed.
o.,	-
o.,	-
o.,	Wed.
o.,	Thurs.
o.,	Sat.
o.,	Sat.
o.,	Tues.
o.,	Tues.
o.,	Sat.
o.,	Sat.
o.,	Fri.
o.,	Mon.
o.,	-
o.,	Sat.
o.,	Fri.
o.,	Wed.
o.,	Mon.
o.,	Fri.

No.	NAME.	Location.	Meet.
75	Laguardo, . . .	Laguardo, Wilson Co.,	-
76	Hendersonville. . .	Hendersonville, . . .	-
78	Cleveland, . . .	Cleveland, Brady Co., . . .	-
79	Kingston, . . .	Kingston, Roane Co., . . .	-
86	Mansker's Creek, . . .	Goodlettsville, Davidson Co.,	Sat.
101	Denmark, . . .	Denmark, Madison Co., . . .	-
151	Salem, . . .	Dresden, Weakley Co., . . .	-
206	Cokesbury, . . .	Chestnut Mound, Smith Co.,	-
207	White's Creek, . . .	White's Creek, Davidson Co.	Sat.
208	Cainsville, . . .	Cainsville, Wilson Co., . . .	Wed.
260	Weakley, . . .	Dresden, Weakley Co., . . .	Tues.
266	Walker's Creek, . . .	Temp. Hall, DeKalb Co., . . .	-
309	Walnut Grove, . . .	Sumner Co., . . .	Sat.
315	Beech, . . .	Beech, Sumner Co., . . .	Sat.
335	Eagle, . . .	Sumner Co., . . .	Sat.
371	Hollis' Creek, . . .	Coopertown, Robertson Co.,	Sat.

KENTUCKY.

Officers of Grand Division.

- G. W. P., . . F. T. JOHNS, Oddville.
- G. W. A., . . J. H. W. DEMOSS, Foster.
- G. Scribe, . . A. J. JONES, Augusta.
- G. Treas., . . T. R. VAN DYKE, Augusta.
- G. Chap., . . C. W. ROSE, Oddville.
- G. Con., . . . E. R. BARRELL, Hogansville.
- G. Sent., . . . L. A. PECK, Bradford.
- P. G. W. P., W. H. BLACK, Augusta.

Representatives Elect to National Division.

- | | |
|--|---|
| <ul style="list-style-type: none"> P. G. W. Patriarchs— J. J. Bradford, — Vachael Weldon, William H. Black. P. G. W. Associates— M. Seles, H. McCollum. | <ul style="list-style-type: none"> G. W. Patriarch— F. T. Johns. G. W. Associate— J. H. W. Demoss. P. G. Scribe— A. J. Jones. |
|--|---|

Subordinate Divisions.

No.	NAME.	Location.	Meet.
15	Augusta,	Augusta, Bracken Co.,	Tues.
	Ashland,	Ashland, Boyle Co.,	-
	Andrew Jackson,	Antloch, Washington Co.,	-
	Bloomfield,	Bloomfield, Washington Co.,	-
	Beaver,	Oddville, Harrison Co.,	-
	Bellfont,	Bellfont, Boyle Co.,	-
	Boone,	Petersburg, Boone Co.,	-
	Coalton,	Coalton, Boyle Co.,	-
	Claysville,	Claysville, Harrison Co.,	Sat.
	Catlettsburg,	Catlettsburg, Boyle Co.,	-
	Cherrygrove,	Stroubea Mills, Bracken Co.,	Wed.
	Erving,	Perryville, Boyle Co.,	-
	Evening Star,	Ghent,	-
	Eddyville,	Eddyville,	-
47	Foster,	Foster, Bracken Co.,	Sat.
16	Fairview,	Bradford, Bracken Co.,	Fri.
337	Harrison,	Oddville, Harrison Co.,	-
	Hustonville,	Hustonville, Lincoln Co.,	-
	Harrod,	Harrodsville, Mercer Co.,	-
	Happy Home,	Coalton, Boyle Co.,	-
	Minerva,	Minerva, Mason Co.,	Thurs.
	Dover,	Dover, Mason Co.,	Tues.
	Horton,	Newport, Campbell Co.,	Fri.
	Relief,	Grayson, Clark Co.,	-
	Parksville,	Parksville, Boyle Co.,	-
18	Pleasant Rldge,	Hogansville, Bracken Co.,	Sat.
	Springfield,	Springfield, Wash'gton Co.,	-
	Waco,	Waco, Marion Co.,	-
	Warsaw,	Warsaw, Boone Co.,	-

ILLINOIS.

Officers of Grand Division.

G. W. P., . . .	THOMAS M. VAN COURT, Peoria.	
G. W. A., . . .	OLIVER C. GRAY, Ottawa.	606
G. Scribe, . . .	J. D. HAINES, Box 6225, Chicago.	679
G. Treas., . . .	HENRY RIBLET, Pekin.	
G. Chap., . . .	Rev. A. L. BROOKS, Peoria.	712
G. Con., . . .	L. R. MAYDWELL, Aurora.	473
G. Sent., . . .	THOMAS H. SHEPHERD, Lebanon.	491
P. G. W. P.,	JOHN VAN CLEVE, Chicago.	497
		499

Representatives Elect to National Division.

<p>P. G. W. Patriarchs— George L. Moore, J. F. Simpson, E. D. Lemoin, Henry Ribiet, William Ross, Robert Allyn, E. S. Wells, Truman L. Pratt, Cyrus P. Mason, Thomas M. Van Court, James O. Brayman,</p>	<p>John Van Cleave. P. G. W. Associates— J. C. Stoughton, George W. Trevis, Austin King, J. S. Moore, George N. Jones, A. G. Warner, J. H. Snell, Thomas Moulden, G. W. Associates— Oliver C. Gray.</p>
--	---

Subordinate Divisions.

No.	NAME.	Location.	Meet.
29	Carrollton, . . .	Carrollton, Green Co., . . .	Tues.
74	Pekin, . . .	Pekin, Tazewell Co., . . .	Mon.
79	Hillsboro', . . .	Hillsboro', Montgomery Co., . . .	Tues.
95	Grandview, . . .	Grandview, Edgar Co., . . .	Sat.
116	Wayne, . . .	Fairfield, Wayne Co., . . .	Tues.
156	Mount Carmel, . . .	Mount Carmel, Wabash Co., . . .	-
157	Albion, . . .	Albion, Edwards Co., . . .	-
160	Salem, . . .	Salem, Marion Co., . . .	-
177	Protection, . . .	Pinckneyville, Perry Co., . . .	Fri.
191	Grayville, . . .	Grayville, White Co., . . .	Sat.
232	Batavia, . . .	Batavia, Kane Co., . . .	Fri.
262	Lebanon, . . .	Lebanon, St. Clair Co., . . .	Mon.
268	Social, . . .	East Paw Paw, DeKalb Co., . . .	Sat.
286	Blue Ridge, . . .	Hallock, Peoria Co., . . .	Sat.
292	Hand in Hand, . . .	Carpenterville, Kane Co., . . .	Wed.
422	Garden City, . . .	189 W. Randolph st., Chicago, . . .	Tues.
597	B. S. Goodhue, . . .	"Goodhue Hall," Seymour st., near Fulton, Chicago, . . .	Thurs.
606	Excelsior, . . .	189 W. Randolph st. Chicago, . . .	Fri.
679	Tabernacle, . . .	Church, c. Morgan & Indiana sts., Chicago, Cook Co., . . .	Sat.
712	Chicago, . . .	Y. Men's Chr. Ass. Bldg., 148 Madison st., Chicago, . . .	Mon.
473	Bristol Station, . . .	Bristol Station, Kendall Co., . . .	Tues.
491	Mendota, . . .	Mendota, LaSalle Co., . . .	Sat.
497	Prairie, . . .	Lexington, McLean Co., . . .	Fri.
499	Bone Gap, . . .	Bone Gap, Edwards Co., . . .	Fri.

No.	NAME.	Location.	Meet.
500	Morrison,	Lawrenceville, Law'nce Co.	Thurs.
505	Robinson,	Robinson, Crawford Co.,	Sat.
507	Faithful,	Albion, Edwards Co.,	-
508	Manito,	Manito, Mason Co.,	-
511	Harmony,	Palmira, Macoupin Co.,	Fri.
520	Scott,	Leechtown,	Mon.
523	Mount Erie,	Mount Erie, Wayne Co.,	Fri.
537	Sheffield,	Sheffield, Bureau Co.,	-
550	Buda,	Buda, Bureau Co.,	Sat.
554	Neponset,	Neponset, Bureau Co.,	Mon.
555	Reform,	Reform, Bureau Co.,	Tues.
566	Monitor,	Amboy, Lee Co.,	Fri.
568	Princeton,	Ottawa, LaSalle Co.,	Mon.
569	Oswego,	Princeton, Bureau Co.,	Mon.
575	Selby,	Oswego, Kendall Co.,	Mon.
586	Galesburg,	Hallowayville, Bureau Co.,	Sat.
591	Sidney,	Galesburg, Knox Co.,	-
601	Bureau,	Sidney, Champaign Co.,	Sat.
604	Peoria,	Princeton, Bureau Co.,	Fri.
608	Delavan,	Peoria, Peoria Co.,	Fri.
609	Howard,	Delavan, Tazewell Co.,	Fri.
612	Metropolis,	Beardstown, Cass Co.,	Thurs.
613	Lincoln,	Metropolis, Massac Co.,	Thurs.
614	Shabbona,	Byron, Ogle Co.,	Mon.
616	East Paw Paw,	Shabbona, Bureau Co.,	Mon.
617	Fidelity,	E. Paw Paw, DeKalb Co.,	Tues.
618	Jacksonville,	Shelby, Bureau Co.,	Tues.
619	Bruce,	Jacksonville, Morgan Co.,	Thurs.
620	Marselles,	Prairie Creek, LaSalle Co.,	Sat.
623	Earlville,	Marselles, LaSalle Co.,	Sat.
624	Hope,	Earlville, LaSalle Co.,	Sat.
629	Sterling,	Peoria, Peoria Co.,	Tues.
632	Centralla,	Sterling, Whitesides Co.,	-
635	Lanark,	Centralla, Marion Co.,	Mon.
638	Farmington,	Lanark, Carroll Co.,	Fri.
640	Danville,	Farmington, Fulton Co.,	Tues.
643	Dixon,	Danville, Vermilion Co.,	Sat.
645	Aurora,	Dixon, Lee Co.,	Sat.
647	Jeffersonville,	Aurora, Kane Co.,	Tues.
649	Polo,	Jeffersonville, Wayne Co.,	Fri.
650	Milledgeville,	Polo, Ogle Co.,	-
651	Kingston,	Milledgeville, Carroll Co.,	Fri.
658	Freeport,	Kingston, Peoria Co.,	Sat.
659	Hennepin,	Freeport, Stephenson Co.,	-
661	Kewanee,	Hennepin, Putnam Co.,	Tues.
663	Secor,	Kewanee, Henry Co.,	Mon.
665	Cement,	Secor, Woodford Co.,	Fri.
		Utica, LaSalle Co.,	Tues.
			Sat.

	Meet.
Thurs.	
Sat.	
Fri.	
Mon.	
Fri.	
Sat.	
Mon.	
Tues.	
Fri.	
Mon.	
Mon.	
Sat.	
Co.,	
Sat.	
Fri.	
Fri.	
Fri.	
Thurs.	
Thurs.	
Mon.	
Mon.	
Tues.	
Tues.	
Thurs.	
Sat.	
Sat.	
Sat.	
Tues.	
Mon.	
Fri.	
Tues.	
Sat.	
Sat.	
Tues.	
Tues.	
Fri.	
Fri.	
Sat.	
Sat.	
Tues.	
Mon.	
Fri.	
Tues.	
Sat.	

No.	NAME.	Location.	Meet.
668	New Middleton,	New Middleton, Marion Co.	Tues.
669	Xenia,	Xenia, Clay Co.	Sat.
670	Durand,	Durand, Winnebago Co.,	Tues.
672	Sheldon,	Sheldon, Iroquois Co.,	Sat.
675	Milford,	Milford,	Tues.
678	Nashville,	Nashville, Washington Co.,	Mon.
680	Fond du Lac,	Fond du Lac, Tazewell Co.,	Sat.
682	Georgetown,	Georgetown, Vermilion Co.,	Fri.
683	Odell,	Odell, Livingston Co.,	Mon.
684	Troy,	Troy, Madison Co.,	Wed.
685	Evergreen,	Mineral, Bureau Co.,	Sat.
686	Manlius,	Manlius, LaSalle Co.,	Sat.
688	Como,	Como, Whitesides Co.,	Fri.
690	Lena,	Lena, Stephenson Co.,	Wed.
691	Star of Hope,	Baileysville, Ogle Co.,	Sat.
692	Evening Star,	Ridott, Stephenson Co.,	Fri.
694	Star of the West,	Freeport, Stephenson Co.,	-
695	Elgin,	Elgin, Kane Co.,	-
698	Franklin Grove,	Franklin Grove, Lee Co.,	-
700	Warren,	Warren, Jo Daviess Co.,	-
703	Prairie Hill,	Prairie Hill, Williamson Co.	-
704	Yellow Creek,	Yellow Cr'k, Stephenson Co.	-
705	Clay City,	Clay City, Clay Co.,	Tues.
706	Eagle,	Foreston, Ogle Co.,	Mon.
707	Ludlow,	Ludlow,	-
710	Decatur,	Decatur, Macon Co.,	Tues.
713	Sumner,	Sumner, Lawrence Co.,	Fri.
714	Pleasant Valley,	Pleas. Val., Jo. Daviess Co.,	-
715	Chauncey,	Chauncey, Lawrence Co.,	-
716	Hadley Station,	Hadley Sta., Richland Co.,	Sat.
717	Chillicothe,	Chillicothe, Peoria Co.,	-
718	Fremont,	Fremont, Lawrence Co.,	-
719	Austin,	Austin, Cook Co.,	Wed.
720	Shannon,	Shannon, Carroll Co.,	-
721	Oblong,	Oblong, Crawford Co.,	Sat.
722	Bath,	Bath, Mason Co.,	Tues.
723	Virginia City,	Virginia City, Cass Co.,	Tues.
724	Genesee Grove,	Genesee Gr. Whitesides Co.,	-
725	Annawan,	Annawan, Henry Co.,	-
726	Montgomery,	Montgomery, Kane Co.,	-
727	Elmwood,	Elmwood, Peoria Co.,	-
728	Rome,	Rome, Peoria Co.,	-
729	Lacon,	Lacon, Marshall Co.,	-

RHODE ISLAND.

Officers of Grand Division.

- G. W. P., . . WILLIAM H. S. SMITH, Woonsocket.
 G. W. A , . . JOHN S. MUNROE, Providence.
 G. Scribe, . . PHILIP B. STINESS, Jr., North Providence.
 G. Treas., . . ASA SISSON, Wickford.
 G. Chap., . . HENRY BLUNDELL, South Providence.
 G. Con., . . . RICHARD CLARKE, South Providence.
 G. Sent., . . . JARED B. THOMPSON, South Providence.
 P. G. W. P., FREDERICK A. FAIRBROTHER, Providence.

Representatives Elect to National Division.

- | | |
|--|---|
| <p><i>P. G. W. Patriarchs</i>—
 Thomas W. Wood,
 Daniel Wilkinson,
 Asa Sisson,
 Charles H. Malcolm,
 Arnold Lapham,
 Charles H. Higgins,
 Frederick A. Fairbrother.
 <i>P. G. W. Associates</i>—
 P. B. Stiness, Jr.,</p> | <p>Nathan T. Verry,
 A. D. Vose,
 Dwight R. Adams,
 William N. Johnson,
 John S. Williams,
 John J. Sprague.
 <i>G. W. Patriarch</i>—
 William H. S. Smith.
 <i>G. W. Associate</i>—
 John S. Munroe.</p> |
|--|---|

Subordinate Divisions.

No.	NAME.	Location.	Meet.
2	Providence, . . .	Providence, . . .	Wed.
4	Fountain, . . .	Woonsocket, . . .	Wed.
6	Atlantic, . . .	Newport, . . .	Thurs.
7	Lincoln, . . .	Newport, . . .	—
8	William Penn, . . .	Pawtucket, . . .	Wed.
11	South Providence, . . .	South Providence, . . .	Mon.
27	Hope, . . .	Compton, . . .	Thurs.
30	Blackstone, . . .	Valley Falls, . . .	Tues.

No. 1
307
376
210
17
372
58
367
132

MISSOURI.

Officers of Grand Division.

- G. W. P., . . . WILLARD D. TUCKER, Newark.
 G. W. A., . . . G. A. THRASHER, Monticello.
 G. Scribe, . . . JOSEPH J. GARVER, Box 343, Hannibal.
 G. Treas., . . . HOMER H. WINCHELL, Palmyra.
 G. Chap., . . . Dr. ALONZO JONES, Palmyra.
 G. Con., . . . THOMAS E. SAFFELL, Spencerburg.
 G. Sent., . . . A. L. E. HAYWARD, St. Francisville.

Representatives Elect to National Division.

- | | |
|---|---|
| <p><i>P. G. W. Patriarchs—</i>
 Thomas E. Thompson,
 William A. Lynch,
 Joseph R. Winchell,
 Timothy Parson,
 Henry G. Carson,
 James C. Campbell,
 Joseph J. Garver.
 <i>P. G. W. Associates—</i>
 William Martin,</p> | <p>William J. Knott,
 Homer H. Winchell,
 Jesse McDanielis.
 <i>G. W. Patriarch—</i>
 Willard D. Tucker.
 <i>G. W. Associate—</i>
 G. A. Thrasher.
 <i>P. G. Scribe—</i>
 Thomas B. Hooper.</p> |
|---|---|

Subordinate Divisions.

No.	NAME.	Location.	Meet.
1	St. Louis,	St. Louis,	
307	Chamois, . . .	Chamois, Osage Co., . . .	Mon.
376	Golden Rule, . . .	St. Louis,	Sat.
210	Benevolence, . . .	Rocheport, Boone Co., . . .	Tues.
17	Palmyra, . . .	Palmyra,	Fri.
372	Lincoln, . . .	Palmyra,	Sat.
58	Clinton, . . .	Plattsburgh, Clinton Co., . . .	Mon.
367	Canton, . . .	Canton, Lewis Co., . . .	Thurs.
132	Newark, . . .	Newark, Knox Co., . . .	Mon. Sat.

No.	NAME.	Location.	Meet.
93	St. Francisville,	St. Francisville, Clarke Co.,	-
299	Ben. Franklin,	New Franklin, Howard Co.,	-
144	Spencerburg,	Spencerburg, Pike Co.,	-
373	Tiger Fork,	Bethel, Shelby Co.,	-
375	Marshall,	Marshall, Saline Co.,	-
378	Dickerson,	Monticello, Lewis Co.,	-
377	Boliver,	Boliver, Polk Co.,	-

NEW HAMPSHIRE.

Officers of Grand Division.

- G. W. P., . . . T. J. W. PRAY, Dover.
 G. W. A., . . . F. N. BOUTWELL, Milford.
 G. Scribe, . . . FREDERIC S. CRAWFORD, Concord.
 G. Treas., . . . TRUE OSGOOD, Concord.
 G. Chap., . . . STILLMAN S. DAVIS, Nashua.
 G. Con., . . . PHILANDER C. CHILDS, Claremont.
 G. Sent., . . . L. B. WARD, Milford.

Representatives Elect to National Division.

- | | |
|-----------------------------|-------------------------|
| <i>P. G. W. Patriarchs—</i> | E. E. Cummings, |
| S. W. Buffum, | Hiram Long, |
| M. T. Willard, | E. H. Leslie. |
| Luther P. Durgin, | <i>G. W. Patriarch—</i> |
| John E. Goodwin, | T. J. W. Pray. |
| Thomas Tash, | <i>G. W. Associate—</i> |
| W. H. Earle, | F. N. Boutwell. |
| S. S. Davis, | <i>P. G. Scribes—</i> |
| Leonard Chase, | True Osgood, |
| J. F. Keyes, | J. Frank Webster. |
| William C. Hatch. | |
| <i>P. G. W. Associates—</i> | |
| John B. Fish, | |

G. V.
 G. W.
 G. S.
 G. T.
 G. C.
 G. C.
 G. S.
 P. G.

P. G.
 Asa
 Sam
 Jai
 Jam
 Char
 Will

Subordinate Divisions.

No.	NAME.	Location.	Meet.
1	Monadnock, . . .	Winchester, . . .	Mon.
2	Concord, . . .	Concord, . . .	Mon.
4	Union, . . .	Dover, . . .	Thurs.
5	Granite State, . . .	Portsmouth, . . .	Wed.
6	Cornish, . . .	Cornish Flat, . . .	Fri.
7	Holderness, . . .	Holderness, . . .	Tues.
10	Good Samaritan, . . .	Newton Depot, . . .	Fri.
13	Wetumpka, . . .	Milford, . . .	Wed.
15	Eim, . . .	Plaistow, . . .	Tues.
16	Crystal Fount, . . .	Concord, . . .	Tues.
21	Claremont, . . .	Claremont, . . .	Fri.
23	Winnecummet, . . .	Hampton, . . .	Fri.
24	Atlantic, . . .	Seabrook, . . .	Wed.
25	Hoosick, . . .	Kensington, . . .	-

NEW BRUNSWICK.

Officers of Grand Division:

- G. W. P., . . CHARLES S. LUGRIN, Fredericton.
- G. W. A., . . JOHN RANKIN, St. John.
- G. Scribe, . . WILLIAM W. DUDLEY, Box 236 St. John.
- G. Treas., . . CHARLES A. EVERETT, St. John.
- G. Chap., . . Rev. P. O. REESE, Sallsbury.
- G. Con., . . . DENNIS A. DUFFY, Hillsborough.
- G. Sent., . . . CHARLES W. S. BARKER, Fredericton.
- P. G. W. P., Rev. GEORGE O. HEUSTIS, Carleton, St. John.

Representatives Elect to National Division.

- P. G. W. Patriarchs—*
 Asa Coy,
 Samuel L. Tilley,
 James Johnson,
 James Steadman,
 Charles A. Everett,
 William Wedderburn,

- Stephen K. Foster,
 Oscar D. Wetmore,
 J. C. Hurd,
 Daniel C. Perkins,
 John L. Marsh,
 George O. Heustis.

P. G. W. Associates—

Robert Salter,
Harry Peters,
Samuel D. Macpherson,
Justus S. Wetmore,
Alexander P. Millar,
Henry Webber,
Charles N. Skinner,
Charles D. Everett,

Charles P. Wetmore,
Robert T. Babbitt.

G. W. Paterson—
Charles S. Lagrin.

G. W. Associate—
John Rankin.

P. G. Scribes—
William H. A. Keans,
William W. Dudley.

Subordinate Divisions.

No.	NAME.	Location.	Meet.
1	Howard,	St. Stephen, Charlotte Co.,	Fri.
2	York,	City of Fredericton, York Co.	Fri.
3	Wilberforce,	Milltown, Charlotte Co.,	Wed.
5	Gurney,	City of St. John,	Thurs.
7	Portland,	Portland, St. John,	Mon.
9	Victoria,	City of St. John,	Fri.
13	Sheffield,	Sheffield, Sunbury Co.,	Mon.
15	Pioneer,	Dorchester, Westmoreland Co.	Wed.
18	Orient,	St. James, Charlotte Co.,	Sat.
20	Firemen's,	City of St. John,	Wed.
21	Queens,	Gagetown, Queens Co.,	Sat.
33	Bathurst,	Bathurst, Restigouche Co.,	-
37	Northumberland,	Chatham, Miramichi Co.,	Fri.
39	Albert,	Hillborough, Albert Co.,	Wed.
40	Sackville,	Sackville, Westmoreland Co.	Tues.
42	Richibucto,	Richibucto, Kent Co.,	Fri.
44	Kingston,	Kingston, Kent Co.,	Tues.
45	Newcastle,	Newcastle, Miramichi Co.,	Thurs.
50	Westmoreland,	Point de Bute, W'm'land Co.	Thurs.
51	Golden Rule,	Hopewell, Albert Co.,	Tues.
53	Sussex,	Sussex, Kings Co.,	Thurs.
54	Kings,	Sussex Vale, Kings Co.,	Wed.
55	Restigouche,	Campbelt'n, Restigouche Co.	Wed.
57	Oromocto,	Oromocto, Sunbury Co.,	Tues.
58	Safeguard,	Penfield, Charlotte Co.,	Sat.
62	Johnston,	Cambridge, Queens Co.,	Sat.
63	Douglas,	Scotch Town, Queens Co.,	-
64	Dalhousie,	Dalhousie, Restigouche Co.,	Mon.
65	Bale Verte,	Bale Verte, Westm'land Co.,	Wed.
66	Upham,	Upham, Kings Co.,	Thurs.
68	Home,	Maracareen, Charlotte Co.,	Sat.
70	Dover,	Dover, Westmorland Co.,	-

*Co-operative.

77
84
91
97
99
101
110
119
121
124
126
134
135
137
142
147
150
151
157
161
164
167
169
173
174
177
178
179
180
181
181
182
183
184
185
186
187
188
189
190
191
192
193
194
195
196
197

No.	NAME.	Location.	Meet.
77	Granite Rock,	Carleton, St. John,	
84	Prince Albert,	Alma, Albert Co.,	Tues.
91	Kedron,*	Norton, Kings Co.,	Sat.
97	Hampstead,*	Hampstead, Queens Co.,	-
99	Nelson,	Derby, Miramichi Co.,	-
101	Inkerman,	Lepreaux, Charlotte Co.,	Mon.
116	Steadman,	Oak Point, Sunbury Co.,	Sat.
119	Carleton,	Woodstock, Carleton Co.,	Sat.
121	Grand Falls,	Grand Falls, Victoria Co.,	-
124	Leading Star,*	Campo Bello, Charlotte Co.	Thurs.
126	Caledonia,	Douglastown, Miramichi Co.	-
134	Oxford,	Up. Gagetown, Queens Co.,	Wed.
135	Middleton,*	Dorchester, W'tmorel'd Co.,	Mon.
137	Hayneville,	Queensbury, York Co.,	-
142	Hampton,	Hampton, Kings Co.,	Mon.
147	Union,	Richmond, Carleton Co.,	Tues.
150	Iron Horse,	Canterbury, York Co.,	Thurs.
151	Garibaldi,	L. Woodstock, Carleton Co.,	Sat.
157	Andover,	Andover, Carleton Co.,	Fri.
161	Eureka,	Northampton, Carleton Co.,	Wed.
164	St. Martins,	St. Martins, St. John Co.,	-
167	Olive Leaf,	Harvey, York Co.,	Tues.
169	Excelsior,	Hillsborough, Albert Co.,	Mon.
173	St. Andrews,	St. Andrews, Charlotte Co.,	Sat.
174	Brunswick,	Up. Sackville, W'tm'land Co.	Mon.
177	Havelock,	Havelock, Kings Co.,	Fri.
178	Lancaster,	Lancaster, St. John Co.,	Wed.
179	Eastern Star,	St. Martins, St. John Co.,	Sat.
180	Sunderland,	Jolicue, Westmoreland Co.,	Mon.
181	South Richmond,	So. Richmond, Carleton Co.,	-
182	Fairville,	Fairville, St. John Co.,	Sat.
183	Moncton,	Moncton, Westmoreland Co.,	Wed.
184	Keans,	Petitcodiac, W'tm'land Co.,	Mon.
185	Blissville,	Blissville, Sunbury Co.,	Mon.
186	Douglas,	Upper Kenwick, York Co.,	-
187	Kingsclear,	Kingsclear, York Co.,	Fri.
188	Riverside,	Nashwaak, York Co.,	Sat.
189	St. George,	St. George, Charlotte Co.,	Tues.
190	Farmers,	Douglas, York Co.,	Sat.
191	Crystal Stream,	Salisbury, Westmorel'd Co.,	Sat.
192	Wedderburn,	Canterbury, York Co.,	Sat.
193	Reform,	Letete, Charlotte Co.,	Mon.
194	Prince of Wales,	Nashwaakin, York Co.,	Sat.
195	Nashwaak,	Nashwaak, York Co.,	Sat.
196	Queensbury,	Queensbury, York Co.,	Sat.
197	South Branch,	South Branch, Sunbury Co.,	Sat.

* Incorporative.

No.	NAME.	Location.	Meet.
198	Union,	Cardigan, York Co.,	Sat.
199	Morning Star,	Penwick, York Co.,	-
200	Union,	Tay Creek, York Co.,	-
201	New Dominion,	Springfield, York Co.,	-
202	Worthy Effort,	Little River, Sunbury Co.,	Sat.
203	Morning Star,	Cocalgne, Kent Co.,	Sat.
204	New Dominion,	St. Marys, York Co.,	Sat.

NORTH CAROLINA.

Officers of Grand Division.

- G. W. P., . . . H. F. RAMSEUR, Jacobs Fork.
 G. W. A., . . . C. E. LAND, Dallas.
 G. Scribe, . . . WILLIAM TIDDY, Lincolnton.
 G. Treas., . . . A. M. FORD, Dallas.
 G. Chap., . . . E. A. POE, Dallas.
 G. Con., . . . H. M. RHYNE, Dallas.
 G. Sent., . . . H. S. WILSON, Lincolnton.
 P. G. W. P., L. M. BERRY, Lincolnton.

Representatives Elect to Grand Division.

- | | |
|-------------------------------------|---------------------------------|
| P. G. W. Patriarch—
L. M. Berry. | G. W. Associate—
C. E. Land. |
| G. W. Patriarch—
H. F. Ramseur. | |

Subordinate Divisions.

No.	NAME.	Location	Meet.
1	Jacobs Fork,	Jacobs Fork,	-
2	Dallas,	Dallas,	-
3	Raleigh,	Raleigh,	-
4	Lincolnton,	Lincolnton,	-

G.
G.
G.
G.
G.
G.
P. G.
P. G.
W.
Th
Ry
Jo
J.
Dr
E.
W.
P. G.
A.
No.
2
10
11
21
25
26
30
H
V
C
P
R
R
V

INDIANA.

Officers of Grand Division.

- G. W. P., . . . C. W. STAGG, Indianapolis.
 G. W. A., . . . L. F. WORKS, Vevay.
 G. Scribe, . . . J. B. ABBETT, Indianapolis.
 G. Treas., . . . J. S. VANARDEL, Thorntown.
 G. Chap., . . . J. P. ORR, Andersonville.
 G. Con., . . . R. B. HART, Evansville.
 G. Sent., . . . J. W. BUTLER, Huntsville.
 P. G. W. P., WILLIAM W. H. MACCURDY, Indianapolis.

Representatives Elect to National Division.

- | | |
|--|---|
| <p><i>P. G. W. Patriarchs</i>—
 William Hannaman,
 Thomas A. Goodwin,
 Ryland T. Brown,
 John B. Abbett, —
 J. H. Batty,
 Dr. L. Abbett, —
 E. J. Morris,
 Wm. W. H. MacCurdy.
 <i>P. G. W. Associates</i>—
 A. S. Kingsley,</p> | <p>A. Stevens,
 C. E. Scarlett,
 <i>G. W. Patriarch</i>—
 C. W. Stagg.
 <i>G. W. Associate</i>—
 L. F. Works.
 <i>P. G. Scribe</i>—
 Henry Ohr.</p> |
|--|---|

Subordinate Divisions.

No.	NAME.	Location.	Meet.
2	Huntington, . . .	Huntington, . . .	-
10	Washington, . . .	Temp. Hall, Indianapolis, . . .	-
11	Cambridge, . . .	Cambridge City, . . .	Fri.
21	Patriot, . . .	Patriot, Switzerland Co., . . .	-
25	Roanoke, . . .	Roanoke, Huntington Co., . . .	-
26	Randolph, . . .	Winchester, Randolph Co., . . .	-
30	Vincennes, . . .	Vincennes, . . .	Sat.

No.	NAME.	Location.	Meet.
44	Fidelity,	Elkhart,	Mon.
54	Temple of Honor,	Evansville,	Tues.
56	Zionsville,	Zionsville, Boone Co.,	-
101	Lawrenceburg,	Lawrenceburg,	Sat.
119	Tanner's Creek,	Guilford, Dearborn Co.,	-
162	New Town,	New Town,	Tues.
175	Moore's Hill,	Moore's Hill,	Tues.*
234	Decatur,	Rosburg,	Sat.
253	Bennington,	Bennington, Switzerland Co.,	Thurs.
254	Summit,	Trenton,	Fri.
292	Blue Grass,	McCutchonville,	Thurs.
315	Chesterfield,	Chesterfield, Madison Co.,	-
336	Dayton,	Dayton,	Fri.
429	Sheldon,	Lawrenceburg,	Mon.
430	Napoleon,	Napoleon, Ripley Co.,	-
431	Starr,	Gaugh Hall, Indianapolis,	Wed.
432	Lafayette,	Lafayette,	-
433	Noblesville,	Noblesville,	-
435	Perkinsville,	Perkinsville,	-
437	Thorntown,	Thorntown,	Sat.
438	Rescue,	Waveland, Montgomery Co.,	-
439	Delevan,	Westfield, Hamilton Co.,	-
440	Carmel,	Bethlehem, Hamilton Co.,	-
443	Andersonville,	Andersonville, Franklin Co.,	-
445	Abbett,	Union, Hamilton Co.,	-
446	Planefield,	Planefield,	-
451	Attica,	Attica,	Sat.
454	Metamora,	Metamora,	Sat.
466	Hamilton, (col'd),	Noblesville,	-
468	Iroquois,	Kent Station,	-
469	Falls City,	Jeffersonville,	-
470	Excelsior,	Tipton,	-
471	Charlottesville,	Charlottesville,	-
472	Cleveland,	Cleveland,	-
476	Florence,	Florence, Switzerland Co.,	Sat.
477	Vevay,	Vevay,	Mon.
479	Mount Sterling,	Mount Sterling,	Sat.
485	Cary,	Sugar Branch, Switzerland Co.,	Fri.
486	Morocco,	Morocco,	Tues.
487	Fairland,	Fairland, Shelby Co.,	Sat.
488	Monitor,	Monitor,	Sat.
489	Losantville,	Losantville,	Mon.

* Second and fourth.

7
90
54
93
16
87
96

VERMONT.

Officers of Grand Division

G. W. P., . . H. F. AUSTIN, Swanton.
 G. W. A., . . JAMES SQUIER, North Ferrisburgh.
 G. Scribe, . . HORACE T. DENNIS, Woodstock.
 G. Treas., . . A. A. DAIKIN, North Ferrisburgh.
 G. Chap., . . SAMUEL JACKSON, Vergennes.
 G. Con., . . A. E. FRENCH, Woodstock.
 G. Sent., . . F. B. GORHAM, West Rutland.
 P. G. W. P., G. L. ARMINGTON, Ludlow.

Representatives Elect to National Division.

P. G. W. Patriarchs—	J. E. Smith,
Thomas E. Power	R. C. Thrall,
Lorenzo Sheldon,	H. T. Dennis.
C. H. Chapman,	G. W. Patriarch—
J. Fassett,	H. F. Austin.
William S. Balch,	G. W. Associate—
William A. Burnett,	James Squier.
George L. Armington.	P. G. Scribe—
P. G. W. Associates—	R. J. White.
J. H. Murdock,	

Subordinate Divisions.

No.	NAME.	Location	Meet.
7	Ottougechee, . . .	Woodstock,	Sat.
90	Kedron,	Woodstock,	Sat.
54	Marble Colby, . . .	West Rutland,	Fri.
93	Union,	North Ferrisburgh, . .	Sat.
16	Ludlow,	Ludlow,	Sat.
87	Friendship,	Rutland,	Sat.
96	Mechanics',	Swanton,	-

Meet.
 -
 Mon.
 Tues.
 Sat.
 -
 Tues.
 Tues.^a
 Sat.
 Thurs.
 Fri.
 Thurs.
 -
 Fri.
 Mon.
 -
 Wed.
 -
 Sat.
 -
 -
 -
 -
 -
 Sat.
 Sat.
 -
 -
 Sat.
 Mon.
 Sat.
 Fri.
 Tues.
 Sat.
 Sat.
 Mon.

NOVA SCOTIA.

Officers of Grand Division.

- G. W. P., . . . DAVID MARSHALL, Esq., New Glasgow.
 G. W. A., . . . Rev. J. E. BALCOM, Hantsport.
 G. Scribe, . . . PATRICK MONAGHAN, Halifax, P. O. Box 87.
 G. Treas., . . . THOS. B. LAYTON, Folly Village, Colchester Co.
 G. Chap., . . . Rev. J. M. MCLEOD, Brooklyn, Hants Co.
 G. Con., . . . RICHARD S. BLOIS, Gore, Hants Co.
 G. Sent., . . . ALEXANDER LOGAN, North Sydney, C. B.
 P. G. W. P., THOMAS M. KING, Esq., Antigonish.

Representatives Elect to Grand Division.

P. G. W. Patriarchs—
 William Burrill,
 John McMurray,
 William M. Brown,
 George Christie,
 John M. Cramp,
 Alexander McArthnr,
 Robert Alder Temple,
 Avar Longley,
 James D. B. Frazer,
 Isaac J. Skinner,
 William E. McRobert,
 Henry A. Taylor,
 Thomas M. King.

P. G. W. Associates—
 Robert Noble,
 Donald Johnston,
 Nathaniel Gunnison,
 John Heenan,
 Stephen Selden,
 William Murray,
 Robert M. Barrett.
G. W. Patriarch—
 David Marshall,
G. W. Associate—
 J. E. Balcom.
P. G. Scribe—
 Patrick Monaghan.

Subordinate Divisions.

No.	NAME.	Location.	Meet.
		ANNAPOLIS COUNTY.	
14	New Caledonia, .	Granville,	Sat.
44	Olive Branch, .	Bridgetown,	Mon.
95	Nelson,	Lawrencetown,	Tues.
222	Chrystal Spring, .	Maitland,	Sat.
291	Hillside,	Inglesville,	Mon.

No.	NAME.	Location.	Meet.
ANTIGONISH COUNTY.			
212	St. Andrews, . . .	Antigonish, . . .	Tues.
267	Lady of the Lake, . .	Lochabor, . . .	Wed.
268	Addington, . . .	Addington Forks, . .	Fri.
276	Lily of the Lake, . .	West River, . . .	Mon.
277	Sea-Side, . . .	Cape George, . . .	Fri.
COLCHESTER COUNTY.			
41	Truro, . . .	Truro, . . .	Tues.
72	Agricola, . . .	Upper Stewiacke, . .	Mon.
82	Iron Age, . . .	Great Village, . . .	Thurs.
140	Arctic, . . .	Economy, . . .	Tues.
155	Cobequid, . . .	Folly Village, . . .	Wed.
170	Island Home, . . .	Five Island, . . .	Mon.
181	Oceanica, . . .	Portaupique, . . .	Mon.
240	Scotia, . . .	Tatamagouche, . . .	Wed.
242	Pleasant Valley, . . .	S. Branch, Stewiacke, . .	Tues.
244	Springside, . . .	Eastville, Upper Stewiacke, . .	Thurs.
247	Crystal, . . .	Middle Stewiacke, . .	Fri.
254	Annan, . . .	New Annan, . . .	Mon.
256	Stirling Blue, . . .	New Annan, . . .	Fri.
CUMBERLAND COUNTY.			
36	Pugwash, . . .	Pugwash, . . .	Mon.
75	Wallace, . . .	Wallace, . . .	Thurs.
106	Friendship, . . .	Nappan, . . .	Mon.
110	Parrsboro', . . .	Mill Village, . . .	Tues.
117	Southampton, . . .	Maccan, . . .	Tues.
131	Temple, . . .	Wallace Bay, . . .	Sat.
141	Excelsior, . . .	Little Forks, Maccan, . .	Wed.
142	White Rose, . . .	West Brook, . . .	Thurs.
182	Amherst, . . .	Amherst, . . .	Sat.
199	Rescue, . . .	Advocate Harbor, . . .	Sat.
219	Greville, . . .	Port Greville, . . .	Sat.
288	Fowler, . . .	Apple River, . . .	Tues.
CAPE BRETON COUNTY.			
27	Cape Breton, . . .	North Sydney, . . .	Thurs.
40	Archangel, . . .	Sydney Mines, . . .	Sat.
61	Star in the East, . . .	Sydney, . . .	Thurs.
89	Bethlehem, . . .	N. W. Arm, . . .	Tues.
167	North Sydney, . . .	North Sydney, . . .	Fri.
216	Alexandra, . . .	Little Bras d'Or, . . .	Mon.
246	Morien, . . .	Cow Bay, . . .	Sat.
249	H. A. Taylor, . . .	Little Grace Bay, . . .	Thurs.
271	Homeville, . . .	Mira Bay, . . .	Sat.
DIGBY COUNTY.			
6	Union, . . .	Digby, . . .	Tues.
24	Columbia, . . .	Weymouth, . . .	Tues.
37	Roy, . . .	Hillsburg, . . .	Sat.
145	Tyro, . . .	Westport, . . .	Mon.

No.	NAME.	Location.	Meet.
<i>Digby Co.—Con.</i>			
146	General Williams,	Waterford,	Thurs.
152	General Inglis,	St. Mary's Bay,	Sat.
154	Hope,	Grand Joggin,	Mon.
161	Western Star,	Long Island,	Sat.
169	Home,	Smith's Cove,	Wed.
183	Brilliant Star,	Petite Passage,	Sat.
227	LePage,	Sandy Cove,	Thurs.
231	Randall,	New Tusket,	Sat.
260	Welcome,	South Range,	Thurs.
286	Morning Dawn,	Rossway, Dig. Neck,	Sat.
287	Social,	Centreville, Dig. Neck,	Sat.
289	Crandall,	Little River,	Tues.
290	Melrose,	Everett Settlement,	Wed.
GUYSBOROUGH COUNTY.			
93	Chedabucto,	Guysborough,	Wed.
109	Wellington,	Sherbrooke,	Mon.
204	Wine Harbour,	Wine Harbour,	Thurs.
220	Youth's Refuge,	Melrose,	Thurs.
264	Milford Haven,	Manchester,	Tues.
265	Sparkling Water,	Guysboro', Intervale,	Tues.
266	Golden Age,	Isaac's Harbour,	Mon.
269	Glenelg,	Glenelg,	Mon.
279	Rainbow,	New Harbour,	Mon.
HALIFAX COUNTY.			
7	Chebucto,	Halifax,	Thurs.
8	Micmac,	Halifax,	Mon.
9	Mayflower,	Halifax,	Wed.
20	Howard,	Halifax,	Tues.
52	Rising Sun,	Middle Musquodoboit,	Fri.
50	Morning Star,	St. Margaret's Bay,	Sat.
96	Athenæum,	Halifax,	Fri.
125	June Rose,	Hammonds Plains,	Sat.
137	Sackville,	Sackville,	Mon.
171	Gibraltar,	Gay's River,	Fri.
193	Green Vale,	Musquodoboit Harbor,	Thurs.
194	Tangler,	Tangler,	Sat.
205	Waverley,	Waverley,	Sat.
217	Day-Spring,	Dartmouth,	Tues.
224	Champion,	Sheet Harbour,	Sat.
232	Ingraham,	St. Margaret's Bay,	Sat.
234	Musquodoboit,	Upper Mosquodoboit,	Wed.
236	Marathon,	Indian Harbor,	Sat.
237	Richmond,	Halifax,	Fri.
243	Oakland,	Meagher's Grant,	Sat.
248	Rising Planet,	Little River,	Mon.
262	Granite Rock,	Sambro,	Wed.
293	Fisherman's Home,	Clam Harbour,	Sat.

N
1
3
38
63
93
115
124
202
221
263
272
284
172
177
223
257
259
292
68
71
105
112
195
196
198
201
214
218
238
239
241
32
115
173
226
273
275
16
17
57
79
129

Meet.	No.	NAME.	Location.	Meet.
			HANTS COUNTY.	
Thurs.	12	Avon,	Windsor,	Thurs.
Sat.	13	Avondale,	Newport Landing,	Mon.
Mon.	38	Morning Star,	Chiverie,	Fri.
Sat.	62	Hantsport,	Hantsport,	Wed.
Wed.	63	Rock,	Maitland,	Thurs.
Sat.	92	Kellogg,	Elmsdale,	Thurs.
Thurs.	119	Reclab,	South Rawdon,	Thurs.
Sat.	124	Vesper,	Gore,	Wed.
Thurs.	202	Brooklyn,	Brooklyn,	Sat.
Sat.	221	Marine,	Noel,	Wed.
Sat.	263	Gold Hunter,	Renfrew,	Wed.
Tues.	272	Macleod,	St. Crolx,	Tues.
Wed.	284	Miners' Own,	Mount Uniacke,	Sat.
			INVERNESS COUNTY.	Tues.
Wed.	172	Inverness,	Whecocomah,	Mon.
Mon.	177	Hart,	Margaree,	Mon.
Thurs.	223	Morning Light,	Strait of Canso,	Thurs.
Thurs.	257	Victory,	Margaree, (North Side,)	Sat.
Tues.	259	Bruce,	Margaree, (Big Intervale,)	Sat.
Tues.	292	Evening Tide,	West Bay,	Sat.
Mon.			KINGS COUNTY.	Wed.
Mon.	68	Aurora,	Berwick,	Tues.
	71	Lake,	Billtown,	Thurs.
Thurs.	105	Garland,	Harbourville,	Wed.
Mon.	112	Wolfville,	Wolfville,	Mon.
Wed.	195	Port Williams,	Port Williams,	Wed.
Tues.	196	Canning,	Canning,	Thurs.
Fri.	198	Scot's Bay,	Scot's Bay,	Fri.
Sat.	201	Hall's Harbor,	Hall's Harbor,	Mon.
Fri.	214	Pereaux,	Pereaux,	Sat.
Sat.	218	Centreville,	Centreville,	Tues.
Mon.	238	Freedom,	Chipman's Brook,	Wed.
Fri.	239	Fenwick,	Brooklyn Street,	Wed.
Thurs.	241	Rockport,	Black Rock,	Fri.
			LUNENBURG COUNTY.	
Sat.	32	Chester,	Chester,	Sat.
Sat.	115	Phœnix,	Bridgewater,	Fri.
Tues.	173	Sherbrooke,	New Ross,	Wed.
Sat.	226	Noble,	Petite Riviere,	Sat.
Wed.	273	Pleasantville,	Corkum Settlement,	Tues.
Fri.	275	LaHave,	Middle LaHave,	Mon.
			PICTOU COUNTY.	
Sat.	16	Oriental,	Pictou,	Mon.
Mon.	17	New Glasgow,	New Glasgow,	Tues.
Wed.	57	Mainmast,	River John,	Tues.
at.	79	Albion Mines,	Albion Mines,	Thurs.
	129	Rockliff,	Middle River,	Mon.

No.	NAME.	Location.	Meet.
270	Preservation, .	<i>Pictou Co.—Con.</i>	
285	Great Eastern, .	East River, .	Tues.
		W. Branch, R. John, .	Wed.
		QUEENS COUNTY.	
179	New Era, . . .	Liverpool, . . .	Thurs.
180	Green Tree, . .	Greenfield, . . .	Sat.
185	Prince Albert, .	Mills Village, . .	Sat.
186	Ray of Hope, . .	Port Medway, . . .	Tues.
200	Rosignol, . . .	Caledonia Corner, .	Sat.
205	Bachelor, . . .	Milton, . . .	Tues.
208	Ray of Light, . .	East Port Medway, .	Sat.
209	Bethesda, . . .	North Brookfield, .	Fri.
		RICHMOND COUNTY.	
261	Arichat,	Arichat,	Tues.
		SHELburne COUNTY.	
5	Concord,	Barrington,	Wed.
25	Roseway,	Shelburne,	Mon.
49	Star,	Locke's Island, . . .	Wed.
158	Life-Boat,	Cape Island, Barrington, .	Thurs.
159	South,	Cape Sable Island, Bar'gton, .	Mon.
225	Banyan,	Clyde River,	Thurs.
233	Palmerston, . . .	Wood's Harbour, . . .	Mon.
235	Gulding Star, . .	Shag Harbour, . . .	Tues.
250	Monaghan,	N. E. Harbour, . . .	Wed.
253	Anchor,	Pubnico Beach, . . .	Tues.
255	G.anite,	Barrington Passage, .	Mon.
258	Rockland,	Ragged Island, . . .	Sat.
274	McMurray,	Cape Negro,	Mon.
278	Mariner's Home, .	Jordan Bay,	Fri.
280	Carelton,	Roseway,	Tues.
281	Montrose,	Port La'Tour,	Tues.
282	Barratt,	Black Point,	Thurs.
		YARMOUTH COUNTY.	
1	Aeadia,	Yarmouth,	Wed.
2	Central,	Yarmouth,	Thurs.
4	Milton,	Milton,	Mon.
10	Hebron,	Hebron,	Mon.
128	North American, .	Beaver River,	Wed.
132	Pittacus,	Maitland,	Fri.
150	Ohio,	Ohio,	Wed.
191	Mariner's Guide, .	Argyle,	Mon.
213	Arcadia,	Arcadia,	Fri.
228	Hopewell,	Chebogue,	Tues.
229	Tusket,	Tusket,	Tues.
251	Home of the West, .	Central Argyle	Tues.
252	Sailor's Guide, . .	Pubnico,	Wed.
283	Longley,	Wellington,	Sat.

No

190

192

210

230

G. V

G. V

G. S

G. T

G. C

G. C

G. S

P. G

P. G

A.

Ab

Joh

Ed

Ab

He

Wil

J. C

G. I

Joh

W.

P. G

Ed

No.	NAME.	Location.	Meet.
BERMUDA ISLANDS.			
190	Star of Hope, .	St. George,	Wed.
192	Reid,	Hamilton,	Fri.
210	Argus,	Warwick,	Thurs.
230	Philanthropy, .	St. George,	Fri.

CANADA WEST.

Officers of Grand Division.

- G. W. P., . . Rev. JAY S. YOUNG, North Augusta.
 G. W. A., . . JAMES QUIGG, Brockville.
 G. Scribe, . . EDWARD STACEY, Kingston.
 G. Treas., . . S. W. SHARRARD, Brougham.
 G. Chap., . . Rev. J. WILSON, Palermo.
 G. Con., . . . P. H. THORNTON, Oshawa.
 G. Sent., . . . C. BOUNSALL, Bowmanville.
 P. G. W. P., Rev. W. PIRRITE, Brooklyn.

Representatives Elect to National Division.

- | | |
|--|--|
| <p><i>P. G. W. Patriarchs—</i>
 A. B. Pardee,
 Abraham Farewell,
 John Wilson,
 Edward Rowland,
 Abishai Morse,
 Henry Lloyd,
 William Rowe,
 J. G. Elwood,
 G. McLean Rose,
 John Beatty,
 W. Pirrite.
 <i>P. G. W. Associates—</i>
 Edward Stacey,</p> | <p>John Moffatt,
 James Breakenridge,
 Edward Carswell,
 Jacob Lawrence,
 J. M. T. Hannaum,
 William H. Orr,
 Malcolm Cameron,
 Chester Power.
 <i>G. W. Patriarch—</i>
 Rev. Jay S. Young
 <i>G. W. Associate</i>
 James Quigg.</p> |
|--|--|

Meet.
 Tues.
 Wed.
 Thurs.
 Sat.
 Tues.
 Sat.
 Tues.
 Sat.
 Fri.
 Tues.
 Wed.
 Mon.
 Wed.
 Thurs.
 Mon.
 Thurs.
 Mon.
 Tues.
 Wed.
 Tues.
 Mon.
 Sat.
 Mon.
 Fri.
 Tues.
 Tues.
 Thurs.
 Wed.
 Thurs.
 Mon.
 Mon.
 Wed.
 Fri.
 Wed.
 Mon.
 Fri.
 Tues.
 Tues.
 Tues.
 Wed.
 Sat.

Subordinate Divisions.

No.	NAME.	Location.	Meet.
1	Brockville,	Brockville, Leeds Co.,	Thurs.
3	North Augusta,	No. Augusta, Grenville Co.,	-
9	Cobourg,	Cobourg, Northumberl'd Co.,	Wed.
12	Perth,	Perth, Lanark Co.,	Tues.
15	Prescott,	Prescott, Grenville Co.,	Thurs.
18	Abingdon,	Abingdon, Lincoln Co.,	Tues.
21	Glengary,	Williamstown, Glengary Co.,	Sat.
22	Matilda,	Iroquois, Dundas Co.,	Tues.
23	Hawksville,	Hawksville, Waterloo Co.,	Sat.
25	Gore,	Hamilton, Wentworth Co.,	-
26	Ontario,	Toronto, York Co.,	Mon.
27	Yng Men's Refuge,	Farmersville, Leeds Co.,	Tues.
29	Colborne,	Colborne, N'thumberl'd Co.,	Tues.
30	Relief,	Morrisburgh, Dundas Co.,	Tues.
31	Lyn,	Lyn, Leeds Co.,	-
33	Osgoode,	Osgoode, Carleton Co.,	Mon.
35	Oshawa,	Oshawa, Ontario Co.,	Mon.
36	Stamford,	Stamford, Welland Co.,	Sat.
38	Rescue,	Mt. Pleasant, Durham Co.,	Sat.
39	Bowmanville,	Bowmanville, Durham Co.,	Tues.
42	Kilmanagh,	Kilmanagh, Peel Co.,	Sat.
45	Homer,	Homer, Lincoln Co.,	Thurs.
47	Stouffville,	Stouffville, York Co.,	Fri.
48	Ashton,	Ashton, Carleton Co.,	Wed.
49	North Branch,	Bishop's Mills, Grenville Co.,	Fri.
51	Udora,	Udora, Ontario Co.,	-
52	Altona,	Altona, Ontario Co.,	Fri.
53	East Whitby,	Oshawa, Ontario Co.,	Tues.
54	True Love,	Laskay, York Co.,	Fri.
55	Minto,	Harriston, Wellington Co.,	Sat.
56	Haldimand,	Wicklow, N'thumberl'd Co.,	Wed.
57	Milbrook,	Milbrook, Durham Co.,	Tues.
58	Pioneer,	London, Middlesex Co.,	Fri.
59	Sandford,	Sandford, Ontario Co.,	Fri.
62	Martintown,	Martintown, Glengary Co.,	Thurs.
64	Phoenix,	Sparta, Elgin Co.,	Sat.
67	Woodford,	Woodford, Grey Co.,	Sat.
68	Grand River,	Brantford, Brant Co.,	Wed.
69	Milton,	Milton, Halton Co.,	-
73	Ravine,	St. David's, Lincoln Co.,	Tues.
74	Georgetown,	Georgetown, Halton Co.,	Wed.
75	Table Rock,	Drummondville, Well'd Co.,	Mon.
76	Smith,	Peterboro', Peterboro' Co.,	Fri.
77	Newburgh,	Newburgh, Addington Co.,	Sat.
79	Orono,	Orono, Durham Co.,	Wed.

No.

81

82

84

85

86

87

88

89

90

92

93

94

96

97

98

99

100

101

102

103

104

105

106

107

108

109

112

115

116

121

122

123

124

125

126

127

128

129

130

131

132

134

136

138

139

143

145

N

No.	NAME.	Location.	Meet.
			Meet.
			Thurs.
			Wed.
			Tues.
			Thurs.
			Tues.
			Sat.
			Tues.
			Sat.
			Mon.
			Tues.
			Tues.
			Tues.
			Mon.
			Mon.
			Sat.
			Sat.
			Tues.
			Sat.
			Thurs.
			Fri.
			Wed.
			Fri.
			Tues.
			Fri.
			Tues.
			Sat.
			Mon.
			Wed.
			Fri.
			Thurs.
			Wed.
			Mon.
			Fri.
			Wed.
			Fri.
81	Nightingale, . . .	Burford, Brant Co., . . .	Mon
82	Franklin, . . .	Myrtle, Ontario Co., . . .	Wed.
84	Clark Union, . . .	Orono, Durham Co., . . .	Tues.
85	Clairmont, . . .	Weston, York Co., . . .	Sat.
86	Port Robinson, . . .	Port Robinson, Welland Co., . . .	Thurs.
87	Sellna, . . .	Hampton, Durham Co., . . .	Wed.
88	Claude, . . .	Claude, Peel Co., . . .	Sat.
89	Hillsburg, . . .	Hillsburg, Wellington Co., . . .	-
90	Stockdale, . . .	Stockdale, Hastings Co., . . .	-
92	Georges Lake, . . .	Plantagenet, Prescott Co., . . .	-
93	Elma Centre, . . .	Musselburg, Perth Co., . . .	-
94	Faithful, . . .	Avonmore, Stormont Co., . . .	-
96	Golden Hill, . . .	Durham, Grey Co., . . .	Thurs.
97	Horton, . . .	Renfrew, Renfrew Co., . . .	Wed.
98	Hope, . . .	Watson's Cors., Lanark Co., . . .	Thurs.
99	Lucknow, . . .	Avonmore, Stormont Co., . . .	Tues.
100	Argyle, . . .	Durham, Grey Co., . . .	-
101	Sheridan, . . .	Sheridan, Halton Co., . . .	Mon.
102	Caledon, . . .	Rockside, Peel Co., . . .	Tues.
103	Wellington Square, . . .	Wellington Sq., Halton Co., . . .	Mon.
104	Brougham, . . .	Brougham, Ontario Co., . . .	Sat.
105	Bentick, . . .	Crawford, Grey Co., . . .	Tues.
106	Aurora, . . .	Aurora, York Co., . . .	Mon.
107	Holland Landing, . . .	Holland Landing, York Co., . . .	Mon.
108	Woodland, . . .	Cumberland, Russell Co., . . .	Tues.
109	Highland, . . .	Athol, Glengary Co., . . .	Tues.
112	Mount Pleasant, . . .	Ashgrove, Halton Co., . . .	Mon.
115	Widder, . . .	Widder, Lambton Co., . . .	Wed.
116	Central, . . .	St. Vincent, Grey Co., . . .	-
121	Thornton, . . .	Thornton, Simcoe Co., . . .	Fri.
122	Orillia and Oro, . . .	Orillia, Simcoe Co., . . .	Tues.
123	Orangeville, . . .	Orangeville, Wellington Co., . . .	Tues.
124	Plantagenet, . . .	Plantagenet, Prescott Co., . . .	Wed.
125	Providence, . . .	Grahamsville, Peel Co., . . .	Thurs.
126	Tyrone, . . .	Tyrone, Durham Co., . . .	Thurs.
127	Port Burwell, . . .	Port Burwell, Elgin Co., . . .	Tues.
128	Keene, . . .	Keene, Peterboro' Co., . . .	Sat.
129	Brownsville, . . .	Schomberg, York Co., . . .	-
130	Peerless, . . .	Notfield, Glengary Co., . . .	Mon.
131	Osnabrock, . . .	D'kins's Land, Storm't Co., . . .	Wed.
132	Hopetown, . . .	Hopetown, Lanark Co., . . .	Fri.
134	Pine, . . .	Vienna, Elgin Co., . . .	Thurs.
136	Stirton, . . .	Stirton, Wellington Co., . . .	-
138	Fenelon Falls, . . .	Fenelon Falls, Victoria Co., . . .	Wed.
139	Uxbridge Village, . . .	Uxbridge, Ontario Co., . . .	Mon.
143	Palermo, . . .	Palermo, Halton Co., . . .	Wed.
145	North Matilda, . . .	Dickson's Cors., Dundas Co., . . .	Fri.

No.	NAME.	Location.	Meet.
146	Monument, . . .	Queenston, Lincoln Co., . . .	Fri.
148	Bradford, . . .	Bradford, Simcoe Co., . . .	Wed.
150	Stanley Mills, . . .	Stanley Mills, Peel Co., . . .	Tues.
151	Renfrew, . . .	Renfrew, Renfrew Co., . . .	Thurs.
154	Woodburn, . . .	Woodburn, Wentworth Co., . . .	Wed.
156	Paris, . . .	Paris, Brant Co., . . .	Thurs.
157	Barrie, . . .	Barrie, Simcoe Co., . . .	Tues.
158	Havelock, . . .	Musselburg, Perth Co., . . .	Thurs.
159	Laurel, . . .	Laurel, Wellington Co., . . .	Fri.
161	Perseverance, . . .	Colborne, Northumberl'd Co. . .	Fri.
168	Vernonville, . . .	Vernonville, N'thumberl'd Co. . .	Tues.
170	Brunswick Hill, . . .	Whitvale, Ontario Co., . . .	Sat.
172	Tusearora, . . .	Onondaga, Brant Co., . . .	-
174	Hoslac, . . .	Aultsville, Stormont Co., . . .	Fri.
175	Rideau Union, . . .	Ottawa, Carleton Co., . . .	Tues.
178	Linwood, . . .	Linwood, Waterloo Co., . . .	Tues.
180	Arnprior, . . .	Arnprior, Renfrew Co., . . .	Wed.
181	Evening Star, . . .	Welland, Welland Co., . . .	Sat.
182	Alexandria, . . .	Enniskillen, Durham Co., . . .	Mon.
184	Dunbar, . . .	Dunbar, Dundas Co., . . .	Fri.
185	Coleraine, . . .	Coleraine, Peel Co., . . .	Thurs.
186	Alma, . . .	Welcome, Durham Co., . . .	Wed.
187	Unionist, . . .	Rugby, Simcoe Co., . . .	Fri.
188	Erin Beacon Light, . . .	Ballinafad, Wellington Co., . . .	Thurs.
190	Manilla, . . .	Manilla, Victoria Co., . . .	Fri.
193	Bewdley, . . .	Bewdley, Northumberl'd Co. . .	Wed.
194	Cherry Creek, . . .	Churchville, Simcoe Co., . . .	Thurs.
196	St. Thomas, . . .	St. Thomas, Elgin Co., . . .	Wed.
200	South Mountain, . . .	So. Mountain, Dundas Co., . . .	Mon.
205	South Augusta, . . .	Brockville, Leeds Co., . . .	Wed.
210	Mount Meldrum, . . .	Agincourt, York Co., . . .	Mon.
211	Bolton, . . .	Albion, Peel Co., . . .	Tues.
212	Coldstream, . . .	Toronto, York Co., . . .	Wed.
214	Westmeath, . . .	Westmeath, Renfrew Co., . . .	Mon.
215	Camborne, . . .	Camborne, N'th'berland Co., . . .	Mon.
216	Chatham Fountain, . . .	Chatham, Kent Co., . . .	Mon.
218	Central Augusta, . . .	Maynard, Grenville Co., . . .	Mon.
221	Centreville Union, . . .	S. Monaghan, N'thum'l'd Co. . .	Mon.
222	Sharon, . . .	Sharon, York Co., . . .	Sat.
223	Maple Lf Excelstor, . . .	Bell Ewart, Simcoe Co., . . .	Tues.
224	Bytown, . . .	Ottawa, Carleton Co., . . .	Mon.
225	Quarry, . . .	Ottawa, Carleton Co., . . .	Fri.
220	Experiment, . . .	Colborne, N'thumberland Co. . .	Mon.
230	Cumminsville, . . .	Cumminsville, Halton Co., . . .	Tues.
231	Canborough, . . .	Camboro', Haldmand Co., . . .	-
232	Kettleby, . . .	Kettleby, York Co., . . .	Sat.
233	Ingersoll, . . .	Ingersoll, Oxford Co., . . .	Mon.

Meet.	No.	NAME.	Location.	Meet.
Fri.	238	No. Williamsburg,	N. Williamsburg, Dundas Co.	Wed.
Wed.	239	Mount Albert,	Newland, York Co.,	Fri.
Tues.	244	Chinguacousy,	Edmonton, Peel Co.,	Wed.
Thurs.	245	Taylors,	Cartwright, Durham Co.,	Mon.
Wed.	247	Charlesville,	Aultsville, Stormont Co.,	Mon.
Thurs.	249	The Wheatly,	Wheatly, Essex Co.,	Sat.
Tues.	251	Cold Water,	Jarrett's Cors., Simcoe Co.,	Mon.
Thurs.	253	Morning Star,	Mapleton, Elgin Co.,	Sat.
Fri.	254	Arthur William,	Delhi, Norfolk Co.,	Fri.
Fri.	255	Campbell's Cross,	Campbell's Cross, Peel Co.,	-
Tues.	257	Otterville,	Otterville, Oxford Co.,	Sat.
Sat.	259	Cartwright,	Cartwright, Durham Co.,	Tues.
-	260	Star,	Bowmanville, Durham Co.,	Fri.
Fri.	261	Inkerman,	Inkerman, Dundas Co.,	Sat.
Tues.	265	Tilsonburg,	Tilsonburg, Oxford Co.,	Fri.
Wed.	266	New Moon,	Maple, York Co.,	Wed.
Sat.	267	Siloam,	Ballymote, Middlesex Co.,	Thurs.
Mon.	268	Durham,	Durham, Grey Co.,	Tues.
Fri.	269	Glanford,	Glanford, Wentworth Co.,	Sat.
Thurs	270	Salem,	Bowmanville, Durham Co.,	Mon.
Wed.	272	Edmonton,	Edmonton, Peel Co.,	Tues.
Fri.	273	Verulam Rose,	Fenelon Falls, Victoria Co.,	Tues.
Thurs.	274	Merrittsville,	Welland, Welland Co.,	Wed.
Fri.	277	Concord,	Maple, York Co.,	Sat.
Wed.	278	Keith,	Wallaceburg, Kent Co.,	Tues.
Thurs	280	West Winchester,	W. Winchester, Dundas Co.,	Tues.
Wed.	284	Norwich,	Norwich, Oxford Co.,	-
Mon.	286	Clairville,	Humber, York Co.,	Fri.
Wed.	289	Fitzroy,	Antrim, Carleton Co.,	Sat.
Mon.	290	Iona,	Iona, Elgin Co.,	Sat.
Tues.	292	Invincible,	Dunferief, Middlesex Co.,	Mon.
Wed.	294	Vellore,	Vellore, York Co.,	Sat.
Mon.	295	Malton,	Malton, Peel Co.,	Fri.
Mon.	297	Mount Forest,	Mount Forest, Grey Co.,	Wed.
Mon.	298	Maple Shade,	Barrie, Simcoe Co.,	Tues.
Mon.	299	Goshen,	Renfrew, Renfrew Co.,	Fri.
Mon.	300	Peel Excelsior,	Grahamsville, Peel Co.,	Sat.
Sat.	302	Butterfield,	Oshawa, Ontario Co.,	Fri.
Tues.	304	Hanover,	Hanover, Grey Co.,	Fri.
Mon.	305	Stormont,	Lunenburg, Stormont Co.,	Fri.
Fri.	306	Pomona,	Union, Elgin Co.,	Sat.
Mon.	310	Whitby,	Whitby, Ontario Co.,	Wed.
Tues.	311	Fraternity,	McGillivray, Middlesex Co.,	Mon.
-	312	North Star,	Springfield, Elgin Co.,	Tues.
Sat.	314	Meaford,	St. Vincent, Grey Co.,	Mon.
Mon.	317	Harvest Home,	Wexford, York Co.,	Tues.
-	319	Greenwood,	Greenwood, Ontario Co.,	Thurs.

No.	NAME.	Location.	Meet.
323	Adjala, . . .	Athlone, Simcoe Co., . . .	Wed.
329	Chateauguay, . . .	Columbus, Durham Co., . . .	-
331	Greenbank, . . .	Greenbank, Ontario Co., . . .	Sat.
332	G'borne Temp. Star, . . .	Richmond, Carleton Co., . . .	Tues.
339	Burwick & P. Grove, . . .	Woodbridge, York Co., . . .	Tues.
340	Glengary Caledon., . . .	Williamstown, Glengary Co., . . .	Mon.
342	Platonic, . . .	Riceville, Prescott Co., . . .	Mon.
343	Sylvan, . . .	Sylvan, Middlesex Co., . . .	Mon.
344	Peel, . . .	Alloa, Peel Co., . . .	Sat.
345	Maple Grove, . . .	Bowmanville, Durham Co., . . .	Mon.
346	Tecumseth, . . .	Hunsdon, Peel Co., . . .	Sat.
347	Highland Creek, . . .	Agincourt, York Co., . . .	Fri.
349	Drayton Union, . . .	Drayton, Wellington Co., . . .	Sat.
351	Triumph, . . .	Spencerville, Grenville Co., . . .	Fri.
352	Philanthropic, . . .	Richview, York Co., . . .	-
353	Prince of Wales, . . .	Brighton, Northumberl'd Co., . . .	Wed.
354	Mono Mills, . . .	Mono Mills, Simcoe Co., . . .	-
357	Vernon, . . .	Vernon, Carleton Co., . . .	Fri.
359	Fraserville, . . .	Mount Charles, Peel Co., . . .	Tues.
360	Plum Hollow, . . .	Plum Hollow, Leeds Co., . . .	Fri.
362	Coldsprings, . . .	Thisleton, York Co., . . .	Wed.
366	Rose Hill, . . .	Onondaga, Brant Co., . . .	Wed.
370	Thamesford, . . .	Thamesford, Oxford Co., . . .	Mon.
371	Star of Simcoe, . . .	Keswick, York Co., . . .	Sat.
372	Bethesda, . . .	Binbrook, Wentworth Co., . . .	Sat.
374	K'gston Mechanics, . . .	Kingston, Frontenac Co., . . .	Mon.
376	Darlington, . . .	Bowmanville, Durham Co., . . .	Thurs.
382	Mount Carswell, . . .	Oxford Mills, Grenville Co., . . .	Wed.
383	Oxford, . . .	York Mills, York Co., . . .	Mon.
386	Sutton, . . .	Campbell Cross, Peel Co., . . .	Fri.
388	Peel Central, . . .	Beaverton, Ontario Co., . . .	-
389	Beaverton, . . .	Centreton, N'thumb'land Co., . . .	Mon.
393	Haldimand Centr'l, . . .	Lobo, Middlesex Co., . . .	Fri.
395	Lobo, . . .	Middleville, Lanark Co., . . .	Mon.
396	Middleville, . . .	Coldspring, N'thumberl'd Co., . . .	Fri.
398	Plainville, . . .	Tulamore, Peel Co., . . .	Thurs
399	Salem Star, . . .	Clayton, Lanark Co., . . .	Fri.
407	Ramsay, . . .	Lanark, Lanark Co., . . .	Fri.
409	Clyde, . . .	Lanark, Lanark Co., . . .	Thurs.

VIRGINIA.

Officers of Grand Division.

- G. W. P., . . . Rev. P. A. PETERSON, Norfolk.
- G. W. A., . . . J. F. RINKER, Leesburg.
- G. Scribe, . . . T. WILEY DAVIS, Richmond.
- G. Treas., . . . WILLIAM H. PLEASANTS, Richmond.
- G. Chap., . . . Rev. W. T. LINDSAY, Richmond.
- G. Con., . . . GEORGE W. HALL, Fairfax.
- G. Sent., . . . JOHN P. TYLER, Richmond.
- P. G. W. P., Rev. PHILIP B. PRICE, Richmond.

Representatives Elect to National Division.

- | | |
|--|--|
| <p><i>P. G. W. Patriarchs—</i>
 Peterfield Trent,
 Roscoe G. Greene,
 P. B. Price,
 <i>P. G. W. Associates—</i>
 William J. Glenn,
 B. H. Berry, Jr.</p> | <p><i>G. W. Patriarch—</i>
 Rev. P. A. Peterson.
 <i>G. W. Associate—</i>
 J. F. Rinker.
 <i>G. Scribe—</i>
 R. E. Richardson.</p> |
|--|--|

Subordinate Divisions.

No.	NAME.	Location.	Meet.
1	Springfield, . . .	Richmond,	Thurs.
2	Shockoe Hill, . . .	Richmond,	Mon.
3	Hutcheson,	Richmond,	Tues.
4	Waterford,	Leesburg,	Sat.
5	Marion,	Richmond,	Fri.
6	Fox Hill,	Hampton,	Sat.
8	Independence, . . .	Chesterfield,	Fri.
10	Centreville,	Centreville,	Sat.

No.	NAME.	Location.	Meet.
11	Hamilton,	Nicholas Co.,	
12	Roanoke,	Salem,	Sat.
13	Phoenix,	Jefferson Co.,	Fri.
14	Laurel,	Leesburg,	Sat.
15	Poguosin,	Hampton,	Wed.
16	Little Bethel,	Hampton,	Sat.
17	York,	Yorktown,	Fri.
18	Petersburg,	Petersburg,	Sat.
20	Rising Star,	Vienna,	Thurs.
21	Jonesville,	Lee Co.,	Sat.
22	Howard,	Portsmouth,	Sat.
23	Lovetsville,	Leesburg,	Tues.
24	Harmony,	Alexandria,	Mon.
25	Excelsior,	Girardstown,	Fri.
26	Estilleville,	Scott Co.,	Sat.
27	Hamilton,	London Co.,	Sat.
28	Fulton,	Richmond,	-
29	Fincastle,	Fincastle,	Fri.
30	Nickelsville,	Scout Co.,	Sat.
31	Stone-Wall,	Richmond,	Sat.
32	Laurel Hill,	Hendco Co.,	Thurs. Wed.

PRINCE EDWARD ISLAND.

Officers of Grand Division.

- G. W. P., . . . DANIEL ENMAN, Summerside.
 G. W. A., . . . JOHN D. HUBBARD, Tignish.
 G. Scribe, . . . JOHN SCOTT, Charlottetown.
 G. Treas., . . . H. RACKEM, Charlottetown.
 G. Chap., . . . Rev. A. FRAZER, Alberton.
 G. Con., . . . ARTHUR MCEWEN, Campbelltown, N. L.
 G. Sent., . . . EDWARD PROCTOR, Margate.
 P. G. W. P., Hon. J. SIMPSON, Cavendish.

Representatives Elect to National Division.

P. G. W. Patriarchs—

Charles Young,
J. B. Cooper,
J. William Morrison,
J. P. Tanton,
William Sanderson,
John Davis,
D. Laird,
H. Bell,
G. W. Millner,
Allen Frazer,
Jeremiah Simpson.

P. G. W. Associates—

William C. Trowan,
G. Wigginton,
T. T. Fairbairn,
John G. McKay,
M. P. Freeman.
G. W. Patriarch—
Daniel Enman.
G. W. Associate—
John D. Hubbard.
G. Scribe—
John Scott.

Subordinate Divisions.

No.	NAME.	Location.	Meet.
1	Prince Edward,	Charlottetown,	Wed.
2	Rising Sun,	Charlottetown,	Fri.
4	Victoria,	Charlottetown,	Mon.
9	Diam'd of the Des't,	Georgetown,	Wed.
22	Flower of the For't,	Dundas,	Thurs.
32	Pioneer,	Alberton,	Wed.
33	Prince of Wales,	Summerside,	Wed.
34	Rose of the Valley,	Lower Grand River,	Sat.
35	Volunteer,	Campbellton,	Fri.
36	Banner,	Montrose,	Tues.
40	West Devon,	Carleton,	Thurs.
41	Birch Hill,	Birch Hill,	Tues.
45	Union,	Springfield,	Wed.*
46	Prince William,	Margate,	Mon.
48	Aurora,	Centreville,	Fri.
50	Evening Star,	Oyster Cove,	Tues.
52	Granville,	Clifton, N. L.,	Wed.
54	Social,	North River,	Thurs.
55	Battery,	Winsloe Road,	Thu.*
56	New Glasgow,	New Glasgow,	Thurs.
57	Ark of Safety,	Wheatley River,	Wed.
60	New W'tmoreland,	Crapaud,	Tues.
61	Rising Star,	Park Corner,	Thurs.
62	Prince Consort,	Lang River,	Tues.
63	Triumph,	New Wiltshire,	Wed.
64	Cavendish,	Cavendish,	Wed.
65	Harmony,	Freetown,	Tues.
66	Firtree,	Princetown,	Mon.

* Alternate.

Meet.
Sat.
Fri.
Sat.
Wed.
Sat.
Fri.
Sat.
Thurs.
Sat.
Sat.
Tues.
Mon.
Fri.
Sat.
Sat.

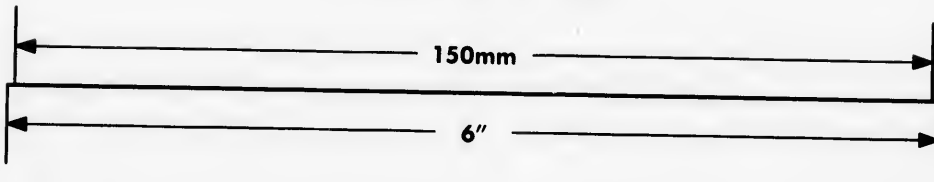
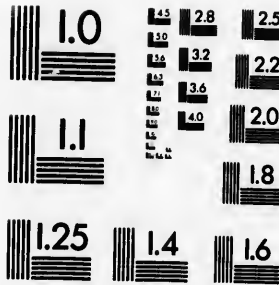
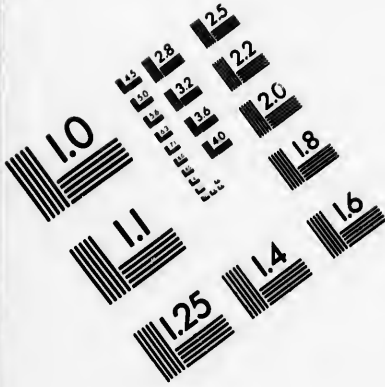
Fri.
Sat.
Sat.
Thurs.
Wed.

D.





IMAGE EVALUATION TEST TARGET (MT-3)



APPLIED IMAGE, Inc
1653 East Main Street
Rochester, NY 14609 USA
Phone: 716/482-0300
Fax: 716/288-5989

© 1993, Applied Image, Inc., All Rights Reserved

0
11
E 1.8
E 2.0
E 2.2
E 2.5
E 2.8
E 3.2
E 3.6
E 4.0

11
10
E 1.2
E 1.5

No.	NAME.	Location.	Meet.
73	Western Star,	Lot Seven,	Thurs.
76	June Rose,	Town Road,	Fri.
77	Golden Rule,	Wilmot Valley,	Thurs.
78	Concord,	Tryon,	Mon.
79	Bloomfield,	Bloomfield,	Tues.
83	Forest,	Trout River,	Wed.
84	Branch,	Winslow Road,	Wed.*
85	Good Samaritan,	Searletown,	Thurs.
86	Blooming Hope,	Alexandra,	Tues.

* Alternate.

WISCONSIN.

Officers of Grand Division.

- G. W. P., . . . THOMAS T. HOWARD, Milwaukee.
 G. W. A., . . . CHARLES W. DENISON, Milwaukee.
 G. Scribe, . . . WILLIAM B. HAZELTINE, Beaver Dam.
 G. Treas., . . . A. WILLARD, Beaver Dam.
 G. Chap., . . . C. D. PILLSBURY, Janesville.
 G. Con., . . . ROBERT SHERIN, Milwaukee.
 G. Sent., . . . G. A. TAYLOR, Kishawan.
 P. G. W. P., DAVID NEWMAN, Beaver Dam.

Representatives Elect to National Division.

P. G. W. Patriarchs—
 David Newman,
 R. S. Wells,
 Lorenzo Merrill,
 S. W. Martin,
 T. H. Hornick,
 J. M. May,
 Samuel D. Hastings,

J. G. Knapp.
G. W. Patriarch—
 Thomas T. Howard.
G. W. Associate—
 Charles W. Denison.
P. G. Scribes—
 A. H. Edwards,
 Charles C. Cheney.

Subordinate Divisions.

No.	NAME.	Location.	Meet.
1	Milwaukee, . . .	Milwaukee,	Thurs.
2	Lincoln,	Sun Prairie,	Sat.
18	Excelsior,	Madison,	Thurs.
20	Janesville City, . . .	Janesville,	Tues.
77	Beaver Dam,	Beaver Dam,	Fri.
145	Burnett,	Burnett,	Tues.
173	Kishawan,	Beaver Dam,	Sat.
191	Perseverance,	Boltonville,	Sat.
193	Burr Oak,	Waupun,	Tues.
195	Brandon,	Brandon,	Tues.
204	Welcome,	Waupun,	Fri.
206	Courtland,	Westford,	Sat.
211	Evergreen,	Waupun,	Sat.
214	Belle City,	Racine,	Tues.

DISTRICT OF COLUMBIA.

Officers of Grand Division.

- G. W. P., . . WILLIAM P. DREW, 434 Ninth St., Washington.
- G. W. A., . . R. A. FISH, War Department, Washington.
- G. Scribe, . . ARTHUR SHEPHERD, 387 Ninth St., Washington.
- G. Treas., . . JOHN JOHNSON, P. O. Box 557, Washington.
- G. Chap., . . L. S. EMERY, Washington.
- G. Con., . . . D. C. FOUNTAIN, Washington.
- G. Sent., . . . ALFRED WOOD, Washington.
- P. G. W. P., ISRAEL C. O'NEAL, Washington.

Representatives Elect to National Division.

- | | |
|---|---|
| <ul style="list-style-type: none"> P. G. W. Patriarchs— George F. McLellan, F. M. Bradley, W. F. Crutchley, Israel C. O'Neal. P. G. W. Associates— John Johnson, | <ul style="list-style-type: none"> J. L. Kidwell. G. W. Patriarch— William P. Drew. G. W. Associate— R. A. Fish. P. G. Scribe— Joseph K. Bridge. |
|---|---|

Subordinate Divisions.

No.	NAME.	Location.	Meet.
WASHINGTON.			
1	Good Samaritan,	Union Hall, 481 3th st.,	Tues.
2	Federal City,	Union Hall, 481 9th st.,	Wed.
3	Equal,	Intel'r Hall, c 7th & D sts.,	Fri.
4	Excelsior,	Island Hall, Virginia av.,	Thurs.
7	Howard,	Union Hall, 9th st.,	Thurs.
8	Western Star,	Green's Hall, Pa. av.,	Mon.
10	Hope,	Island Hall, Virginia av.,	Tues.
11	Lincoln,	Union Hall, 9th st.,	Mon.
12	Western Mission,	Green's Hall, Pa. av.,	Wed.
13	Columbia,	Masonic Hall, 5th st.,	Mon.
14	Geo. Washington,	Intelligencer Hall,	Mon.
15	Home,	Hall on N st. bet. 6th & 7th.	Mon.
16	Crystal Wave,	Hall on N st. bet. 6th & 7th.	Fri.
17	Central,	Union Hall, 9th st.,	Thurs.
18	Ontario,	Masonic Hall, Navy Yard,	Wed.
19	Metropolitan,	Union Hall, 9th st.,	Tues.
GEORGETOWN.			
5	Potomac,	Odd Fellows' Hall, Cong'ss st.,	Wed.
9	Fountain,	Odd Fellows' Hall,	Thurs.
1	Birney, (colored,)	Samaritan Hall,	Wed.
ALEXANDRIA.			
6	Mount Vernon,	Hall c. King and Royal sts.,	Wed.

WESTERN NEW YORK.

Officers of Grand Division.

- G. W. P., . . Rev. WILLIAM SEARLS, Auburn.
 G. W. A., . . SIMEON DILLINGHAM, Lisbon, St. Law. Co.
 G. Scribe, . . J. A. SHAW, Jeddo, Orleans Co.
 G. Treas., . . M. S. RUTHERFORD, Waddington, St. Law. Co.
 G. Chap., . . Rev. M. L. EASTMAN, Lisbon C'tre, St. Law. Co.
 G. Con., . . J. B. VAN VORST, Utica.
 G. Sent., . . MYRON BARKER, Ogdensburg.
 P. G. W. P., J. C. O. REDINGTON, Syracuse.

Representatives Elect to National Division.

P. G. W. Patriarchs—

G. W. Jermain,
P. D. Walter,
William Searls,
G. G. Anderson,
William Beebe,
J. A. Shaw,

John C. O. Redington,

P. G. W. Associates—
William Wayman,
P. H. Farrington,
William Clark.
G. W. Associate—
Simeon Dillingham.

Subordinate Divisions.

No.	NAME.	Location.	Meet.
1	Canandaigua,	Canandaigua,	Tues.
2	Geneva,	Geneva,	Tues.
5	Westfield,	Westfield; Chatauque Co.,	Fri.
6	Fredonia,	Fredonia, Chatauque Co.,	Mon.
7	Dunkirk,	Dunkirk, Chatauque Co.,	Wed.
11	Williamsville,	Williamsville, Erie Co.,	Mon.
13	Hamburg,	White's Corners, Erie Co.,	Tues.
14	Boston,	Boston, Erie Co.,	-
15	Mayville,	Mayville, Chatauque Co.,	-
16	Newfane,	Newfane, Niagara Co.,	-
17	Fulton,	Fulton, Oswego Co.,	-
18	Jeddo Star,	Jeddo, Orleans Co.,	Tues.
19	Berkshire,	Berkshire, Tompkins Co.,	-
20	Johnson's Creek,	Johnson's Ck, Niagara Co.,	Sat.
21	Massena,	Massena, St. Lawrence Co.,	Mon.
22	Waddington,	Waddington, St. Lawr'ce Co.,	Mon.
25	Corning,	Corning, Steuben Co.,	Mon.
26	Painted Post,	Painted Post, Steuben Co.,	-
29	Nicholville,	Nicholville, St. Lawr'ce Co.,	Mon.
30	Ocean Rock,	Louisville, St. Lawr'ce Co.,	Sat.
31	Union,	Lisbon C'ter, St. Lawr'ce Co.,	Fri.
32	Star,	Hopkinton, St. Lawr'ce Co.,	Tues.
34	St. Regis,	Ft. Jackson, St. Lawr'ce Co.,	Sat.
35	Springville,	Springville, Erie Co.,	-
36	Somerville,	Somerville, St. Lawr'ce Co.,	Fri.
37	Alabama Center,	Alabama Center, Gen. Co.,	Sat.
38	Gouverneur,	Gouverneur, St. Lawr'ce Co.,	Mon.
39	Oakfield,	Oakfield, Genesee Co.,	Tues.
40	Resolute,	Syracuse,	Thurs
41	Lawrenceville,	Lawrenceville, St. Lawr. Co.,	-
42	Speedville,	Speedville, Tioga Co.,	Sat.
43	Clymer,	Clymer, Chatauque Co.,	Tues.
45	Brasher Falls,	Brasher Falls, St. Lawr. Co.,	Sat.
47	Russell,	Russell, St. Lawrence Co.,	Wed.

Meet.

Tues.

Wed.

Fri.

Thurs.

Thurs.

Mon.

Tues.

Mon.

Mon.

Fri.

Thurs.

Wed.

Tues.

Wed.

Thurs.

Wed.

Wed.

K.

o.

. Co.

v. Co.

No.	NAME.	Location.	Meet.
49	Hannibal, . . .	Hannibal C'ter, Oswego Co.	Sat.
50	Pembroke, . . .	Richville, Genesee Co.,	Sat.
51	Bowmansville, . . .	Bowmansville, Erie Co.,	Fri.
52	Clarence, . . .	Clarence Center, Erie Co.,	-
53	Crittenden, . . .	Crittenden, Erie Co.,	-
54	Wales Center, . . .	Wales Center, Erie Co.,	Sat.
55	Chatauque Lake, . . .	Jamestown, Chatauque Co.,	Sat.
56	Marilla, . . .	Marilla, Erie Co.,	Thurs.
57	Harmony, . . .	Auburn, . . .	Fri.
58	Yates, . . .	Dundee, Yates Co.,	Tues.
59	Elma, . . .	Elma, Erie Co.,	-
60	Westbury, . . .	Westbury, Wayne Co.,	Thurs.
63	Fair Haven, . . .	Fair Haven, Cayuga Co.,	Mon.
64	Wolcott, . . .	Wolcott, Wayne Co.,	Sat.
66	Martville, . . .	Martville, Cayuga Co.,	Wed.
67	Clyde, . . .	Clyde, Wayne Co.,	Tues.
68	East Newark, . . .	Arcadia, Wayne Co.,	Wed.
70	Skaneateles Lake, . . .	Skaneateles, Onondaga Co.,	Fri.
72	West Falls, . . .	West Falls, Erie Co.,	-
77	Black Lake, . . .	Oswegatchie, St. Lawr. Co.,	Mon.
80	Rising Tide, . . .	Fowler, St. Lawrence Co.,	Sat.
81	Lake Ontario, . . .	Oswego, . . .	Mon.
82	Millville, . . .	Millville, Orleans Co.,	Sat.
97	Cascadilla, . . .	Ithaca, Tompkins Co.,	Sat.
98	Onelda, . . .	Utica, . . .	Mon.
109	Niagara, . . .	Lockport, . . .	Tues.
148	Watkins, . . .	Watkins, Schuyler Co.,	Fri.
261	Jacksonville, . . .	Jacksonville, Tompkins Co.,	Sat.
307	Akron, . . .	Akron, Erie Co.,	Fri.

CALIFORNIA.

Officers of Grand Division.

G. W. P., . . . JOSEPH WEED, San Francisco.
 G. Scribe, . . . F. W. PINKHAM, San Francisco.

Representatives Elect to National Division.

P. G. W. Patriarchs—

John Wade,
Joseph Weed,
Henry Gibbons,
Charles N. Fox,
H. H. Rhees,
H. A. Scofield.

P. G. W. Associates—

Z. Snyder.

J. C. Potter,
Jesse Hobson,
A. A. Hecox,
B. F. Tucker.
P. G. Scribes—
William Hollis,
F. W. Pinkham.

Subordinate Divisions.

No.	NAME.	Location.	Meet.
3	Occidental, . . .	San Francisco, . . .	Fri.
4	Eureka, . . .	Santa Cruz, . . .	Sat.
5	Eden, . . .	San Jose, . . .	Tues.
8	Bollnas, . . .	Bollnas, . . .	Sat.
6	Excelsior, . . .	San Francisco, . . .	Mon.
9	Stockton, . . .	Stockton, . . .	Mon.
19	Last Chance, . . .	Last Chance, . . .	Sat.
20	Unlon, . . .	San Francisco, . . .	Sat.
22	Canon City, . . .	Canon City, . . .	Sat.
23	Taylorville, . . .	Taylorville, . . .	Wed.
25	Olema, . . .	Olema, . . .	Sat.
26	Hopewell, . . .	West Point, . . .	Sat.
27	Table Mountain, . . .	Jamestown, . . .	Sat.
28	Mount Hope, . . .	Nortonville,* . . .	-
30	Golden Rule, . . .	Woodbridge, . . .	Sun.
35	Junction City, . . .	Junction City, . . .	Sat.
36	Upper Placerville, . . .	Placerville, . . .	Wed.
43	Somersville, . . .	Somersville, . . .	Tues.
44	Beryersa, . . .	San Jose, . . .	Sat.
46	Mariposa, . . .	Mariposa, . . .	Thurs.
48	Michigan City, . . .	Michigan Bluff, . . .	Sat.
77	Redwood City, . . .	Redwood City, . . .	Thurs.
87	Everett, . . .	Maxwell's Creek, . . .	Sat.
88	Western Star, . . .	French Gulch, . . .	Sun.
100	Volcano, . . .	Volcano, . . .	Wed.
106	Morning Star, . . .	Arcata, . . .	Sat.
136	Omega, . . .	Omega, . . .	Sat.
198	Scott Bar, . . .	Scott Bar, . . .	Sun.

*New Division, no returns.

WEST VIRGINIA.

Officers of Grand Division.

G. W. P., . . . T. F. HEBB, Hannahsville, Preston Co.
 G. W. A., . . . T. W. SHAW, Newburg.
 G. Scribe, . . . R. W. HALL, Mannington.
 G. Treas., . . . F. M. FOX, Wilsonsburg.
 G. Chap., . . . Rev. M. V. B. WHITE, Mannington.
 G. Con., . . . E. C. GRAHAM, Harper's Ferry.
 G. Sent., . . . R. N. RICHARDSON, Mannington.
 P. G. W. P., JAMES P. DAVIS, Clarksburg.

Representatives Elect to National Division.

P. G. W. Patriarchs—
 William Hall,
 J. P. Davis.

G. W. Patriarch—
 T. F. Hebb.
G. W. Associate—
 T. W. Shaw.

Subordinate Divisions.

No.	NAME.	Location.	Meet.
1	Monticello.	Clarksburg,	Sat.
2	Shenandoah,	Harper's Ferry,	Thurs.
3	Wilsonsburg,	Wilsonsburg,	Sat.
290	Rowlesburg,	Rowlesburg,	Sat.
350	Mannington,	Mannington,	Sat.
362	Newburg,	Newburg,	Sat.
10	Evansville,	Evansville,	Sat.
13	Cottageville,	Cottageville,	Sat.
27	Taylor,	Charleston, Kanawha C. H.,	Sat.
14	Ripley,	Ripley, Jackson Co.,	Sat.
15	Ravenswood,	Ravenswood, Jackson Co.,	Fri.
16	United,	Sir John's Run,	Sat.
17	Torchlight,	Fellowsville, Preston Co.,	Sat.
18	St. George,	St. George, Tucker Co.,	Sat.
19	Danville,	Danville,	Sat.
21	Warm Spring,	Bath,	Sat.
20	Hosewell,	Hosewell, Preston Co.,	Sat.

OHIO.

Officers of Grand Division.

G. W. P., . . MOSES SMITH.

G. Scribe, . . HENRY V. HORTON, Cincinnati.

*Representatives Elect to National Division.**P. G. W. Patriarchs—*S. F. Cary,
William L. King,
George P. Burwell,
D. W. Gage,
I. B. Thompson,
D. H. Pease,
C. N. Olds,
T. D. Royse.*P. G. W. Associates—*John R. Williams,
Caleb Clark,
Charles Hare,
R. A. Severance,
Charles W. Swain,Joseph Gladden,
R. Y. Gladden,
A. Berdan,
William S. Burns,
J. J. Janney,
A. E. Merritt,
Samuel Scott,
G. N. Abbey.*G. W. Patriarch—*

Moses Smith.

G. W. Associate—

B. Raser.

P. G. Scribe—

H. V. Horton.

Subordinate Divisions.

NOTE—I have no list of Divisions from the Grand Scribe of Ohio.

S. W. HODGES, M. W. S.

Meet.

Sat.
Thurs.
Sat.
Sat.
Sat.
Sat.
Sat.
Sat.
Sat.
Sat.
Fri.
Sat.
Sat.
Sat.
Sat.
Sat.

I O W A.

Officers of Grand Division.

G. W. P., . . M. D. McHENRY, Des Moines.
 G. Scribe, . . S. P. IVES, Des Moines.

Representatives Elect to National Division.

P. G. W. Patriarchs—
 M. D. McHenry,
 H. Price,
 J. S. Conner,
 John L. Davies.

P. G. W. Associate—
 William Deford.
G. W. Associate—
 D. Moore.
P. G. Scribe—
 John N. Crawford.

Subordinate Divisions.

NOTE.—No list of Divisions furnished by G. Scribe.

S. W. HODGES, *M. W. S.*

K A N S A S.

Officers of Grand Division.

G. W. P., . . G. A. BECKWITH.
 G. Scribe, . . HIRAM MCARTHUR, Topeka.

Representatives Elect to National Division.

P. G. W. Patriarch—
 Amory Hunting.
P. G. W. Associate—
 M. Rambo.
G. W. Patriarch—
 G. A. Beckwith.

G. W. Associate—
 W. H. Bower.
P. G. Scribe—
 F. P. Baker.

Subordinate Divisions.

NOTE.—No list of Divisions furnished by Grand Scribe.

S. W. HODGES, *M. W. S.*

NEWFOUNDLAND.

Officers of Grand Division.

- G. W. P., . . . Hon. JOHN BERNISTER.
 G. W. A., . . . CHARLES R. AYRE.
 G. Scribe, . . . EBENEZER BRACE, St. Johns.
 G. Treas., . . . JAMES MURRAY.
 G. Chap., . . . JOHN LANG.
 G. Con. . . . HENRY C. B. WOODS.
 G. Sent., . . . JOHN N. CARTER.
 P. G. W. P., JOHN G. HADDOCK.

Representatives Elect to National Division.

- P. G. W. Patriarchs—*
 James J. Rogerson,
 David Sclater,
 James T. Crosby,
 John Lang,
 William D. Morison,
 James Rooney,
 William Bulley,
 Charles Ladner,
 Lionel T. Chancey,
 John G. Haddock.

- P. G. W. Associates—*
 William Davidson,
 William Jenkins,
 John R. Hughes,
 George Bishop.
G. W. Patriarch—
 John Bernister.
G. W. Associate—
 Charles R. Ayre.
P. G. Scribe—
 Ebenezer Brace.

Subordinate Divisions.

No.	NAME.	Location.	Meet.
1	Olive Branch,	Burin,	Sat.
2	Harmony,	Trinity,	Mon.
3	St. John's,	St. John's,	Fri.
7	Star of the East,	Burin,	Mon.
8	Union,	St. John's,	Thurs.
9	Grand Bank,	Grand Bank,	Sat.
10	Fortune,	Fortune,	Sat.
11	Brigus,	Brigus,	Tues.
12	Ray of Hope,	Burin,	Mon.
15	North Star,	Troddlength,	Thurs
16	Harbor Grace,	Harbor Grace,	Wed.
17	Bay Rob'ts & Col. Pt.	Bay Roberts,	Tues.
38	Port-aux-Basque,	Channel,	Sat.
39	Prince of Wales,	Petetis,	Sat.

TEXAS.

Officers of Grand Division.

- G. W. P., . . . Dr. O. O. SEARCY, Lockhart, Caldwell Co.
G. W. A., . . . Gen. H. E. MCCULLOCH, Seguin, Guadalupe Co.
G. Scribe, . . . W. H. COLEMAN, Texana, Jackson Co.
G. Treas., . . . Hon. W. B. GAYLE, Texana, Jackson Co.
G. Chap., . . . J. R. KING, Esq., Seguin, Guadalupe Co.
G. Con., . . . G. F. SIMMONS, Esq., Texana, Jackson Co.
G. Sent., . . . PERRY KIBBEE, Esq., Victoria, Victoria Co.
P. G. W. P., HENRY D. STARR, Texana, Jackson Co.
-
-

CANADA EAST.

Officers of Grand Division.

- G. W. P., . . . Rev. J. W. MANNING, St. Andrews.
G. W. A., . . . Rev. GEORGE ANDERSON, Huntingdon.
G. Scribe, . . . JOHN S. HALL, Montreal.
G. Treas., . . . R. HUTCHINS, East Farnham.
G. Chap., . . . Rev. E. S. INGALLS, Granby.
G. Con., . . . RUFUS GODDARD, Adamsville.
G. Sent., . . . CHARLES BEST, Bedford.
P. G. W. P., WILLIAM JOSLEYN, Bedford.
-

Representatives Elect to National Division.

P. G. W. Patriarchs—
John C. Becket,
John S. Hall,
George Matheson,
Alexander Smeaton,
Henry Rose,
Archibald Duff,
John B. Lay,
George Martin,
William Stevenson,
William Josleyn.

P. G. W. Associates—
A. P. Hurlburt,
John Sears,
C. P. Watson,
W. H. Orr,
G. W. Patriarch—
J. W. Manning.
G. W. Associate—
George Anderson.

Subordinate Divisions.

No.	NAME.	Location.	Meet.
1	Howard, . . .	Montreal, . . .	Thurs.
3	Gough, . . .	Quebec, . . .	Tues.
4	Perseverance, . . .	Huntingdon, . . .	Mon.
5	Bethel, . . .	Ormatown, . . .	Thurs.
9	St. Andrews, . . .	St. Andrews, . . .	Mon.
10	Victoria, . . .	Lachute, . . .	Mon.
11	Lancaster, . . .	Lancaster, P. Ont., . . .	Sat.
14	St. Michael's Un'n, . . .	Athelstan, . . .	Sat.
16	St. Lawrence, . . .	Quebec, . . .	Fri.
17	Lacolle, . . .	Lacolle, . . .	Thurs.
22	Manningv. Hope, . . .	Manningville, . . .	Thurs.
28	Bristol, . . .	Bristol, . . .	Mon.
30	Balaclava, . . .	Leeds, . . .	Tues.
34	Harmony, . . .	New Glasgow, . . .	1 & 15.
38	Richmond, . . .	Melbourne, . . .	Mon.
39	Havelock, . . .	Inverness, . . .	Fri.
44	Granby, . . .	Granby, . . .	Fri.
50	Adamsville, . . .	Adamsville, . . .	Sat.
54	Hungerford, . . .	Bedford, . . .	Sat.
55	Bedford, . . .	Bedford, . . .	Sat.
58	Cowansville, . . .	Cowansville, . . .	Sat.
59	East Farnham, . . .	East Farnham, . . .	Thurs.
70	Covey Hill, . . .	Covey Hill, . . .	Fri.
75	Star of Hope, . . .	Rawdon, . . .	Mon.
80	Dundee, . . .	Dundee Centre, . . .	Tues.

NEW JERSEY.

*Officers of Grand Division, for 1868.**

- G. W. P., . . EDWARD H. DRAKE, Elizabeth.
 G. W. A., . . FREDERICK D. WOODRUFF, Keyport.
 G. Seribe, . . HENRY B. HOWELL, Trenton.
 G. Treas., . . FRANKLIN DEVEREUX, Trenton.
 G. Chap., . . Rev. BENJAMIN S. SHARP, Trenton.
 G. Con., . . . JOHN E. CHEESEMAN, Burlington.
 G. Sent., . . . JOHN H. DOUGLAS, Newark.
 P. G. W. P., Rev. A. G. LAWSON, 17th St., near Fifth Avenue,
 Brooklyn, N. Y.

* The list on page 43, gives the Officers for 1867.

DATES OF ORGANIZATION OF GRAND DIVISIONS.

EASTERN NEW YORK,	Dec. 10, 1842.
NEW JERSEY,	Jan. 25, 1844.
MARYLAND,	Mar. 5, 1844.
PENNSYLVANIA,	Apr. 26, 1844.
CONNECTICUT,	May 11, 1844.
MASSACHUSETTS,	June 12, 1844.
MAINE,	Apr. 16, 1845.
OHIO,	May 11, 1845.
DELAWARE,	Jan. 29, 1846.
INDIANA,	May 2, 1846.
TENNESSEE,	May 26, 1846.
KENTUCKY,	Aug. 1, 1846.
ILLINOIS,	Jan. 8, 1847.
RHODE ISLAND,	Apr. 3, 1847.
MISSOURI,	May 5, 1847.
NEW HAMPSHIRE,	May 11, 1847.
NEW BRUNSWICK,	Sept. 16, 1847.
WISCONSIN,	Feb. 21, 1847.
NOVA SCOTIA,	Apr. 22, 1848.
VERMONT,	June 7, 1848.
PRINCE EDWARD ISLAND,	Oct. 23, 1848.
CANADA WEST,	Apr. 12, 1849.
NEWFOUNDLAND,	July 5, 1849.
CALIFORNIA,	Sept. 9, 1849.
WESTERN NEW YORK,	Nov. 13, 1850.
CANADA EAST,	Jan. 7, 1852.
MICHIGAN,	May 15, 1860.
DISTRICT OF COLUMBIA,	May 6, 1863.
KANSAS,	Sept. 20, 1865.
VIRGINIA,	Jan. 18, 1866.
WEST VIRGINIA,	Apr. 13, 1866.
TEXAS,	Apr. 17, 1867.
IOWA,	Apr. 18, 1867.
SOUTH CAROLINA,	Apr. 24, 1867.
NORTH CAROLINA,	June 7, 1867.
EAST TENNESSEE,	Dec. 1847.

LIST OF GRAND SCRIBES, 1867-8.

SIONS.

- 10, 1842.
 25, 1844.
 5, 1844.
 26, 1844.
 11, 1844.
 12, 1844.
 16, 1845.
 11, 1845.
 29, 1846.
 2, 1846.
 26, 1846.
 1, 1846.
 8, 1847.
 3, 1847.
 5, 1847.
 11, 1847.
 16, 1847.
 21, 1847.
 22, 1848.
 7, 1848.
 23, 1848.
 12, 1849.
 5, 1849.
 9, 1849.
 3, 1850.
 7, 1852.
 5, 1860.
 6, 1863.
 0, 1865.
 3, 1866.
 3, 1866.
 7, 1867.
 3, 1867.
 3, 1867.
 3, 1867.
 1847.
- SCOVILL D. FOOT, New York, 46 Cliff St., *Eastern New York*.
 HENRY B. HOWELL, Trenton, *New Jersey*.
 THOMAS MYERS, Baltimore, 75 McCulloh St., *Maryland*.
 JOHN C. MAGUIGAN, Philadelphia, 118 South Seventh St., *Pa.*
 A. WILSON HOLMES, New Haven, 138 College St., *Connecticut*
 BENJAMIN R. JEWELL, Boston, 36 Washington St., *Mass.*
 M. L. STEVENS, Portland, *Maine*.
 H. V. HORTON, Cincinnati, *Ohio*.
 WILLIAM B. WILMER, Wilmington, *Delaware*.
 JOHN B. ABBETT, Indianapolis, *Indiana*.
 JOHN H. CURREY, Nashville, *Tennessee*.
 ANDREW J. JONES, Augusta, *Kentucky*.
 J. DEARBORN HAINES, Chicago, Box 6,225, *Illinois*.
 PHILIP B. STINESS, Jr., Providence, 24 Westminster St., *R. I.*
 JOS. J. GARVER, Hannibal, Box 343, *Missouri*.
 FREDERIC S. CRAWFORD, Concord, *New Hampshire*.
 WILLIAM W. DUDLEY, St. John, Box 236, *New Brunswick*.
 W. B. HAZELTINE, Beaver Dam, *Wisconsin*.
 PATRICK MONAGHAN, Halifax, *Nova Scotia*.
 H. T. DENNIS, Woodstock, *Vermont*.
 JOHN SCOTT, Charlottetown, Sydney St., *Prince Edw. Island*.
 EDWARD STACEY, Kingston, *Canada West*.
 EBENEZER BRACE, St. Johns, *Newfoundland*.
 F. W. PINKHAM, San Francisco, *California*.
 J. A. SHAW, Jeddo, Orleans Co., *Western New York*.
 JOHN S. HALL, Montreal, 6 Bleury St., *Canada East*.
 THOMAS FEATHERSTONE, Wyandotte, *Michigan*.
 ARTHUR SHEPHERD, Washington, 387 Ninth St., *D. C.*
 HIRAM MCARTHUR, Topeka, *Kansas*.
 T. WILEY DAVIS, Richmond, Box 930, *Virginia*.
 R. W. HALL, Mannington, *West Virginia*.
 SAMUEL P. IVES, Des Moines, *Iowa*.
 D. J. SIMMONS, Columbia, *South Carolina*.
 W. H. COLEMAN, Texana, *Texas*,
 WILLIAM TIDDY, Lincolnton, *North Carolina*.

INDEX.

A.		PAGE.
"Abstainer," weekly newspaper, (August,)		22
Alabama, list of Divisions, (July,)		20
Application for a charter for a Grand Division,		30
Application for a charter for a Subordinate Division,		28
April Calendar,		14, 15
August Calendar,		22, 23
C.		
California,		94
Canada East,		35, 100
Canada West,		35, 81
Chickering & Sons, Pianofortes, (June,)		18
Connecticut,		33, 50
D.		
Dates of Organization of Grand Divisions,		102
December Calendar,		30, 31
Delaware,		34, 57
District of Columbia,		35, 91
E.		
Eastern New York,		32, 36
F.		
February Calendar,		10, 11
Florida, list of Divisions, (July,)		20
Form of Application for a charter for a Grand Division,		30
Form of Application for a charter for a Subordinate Div.		28

Gran
 "
 "
 Gran
 Grea
 Hist
 Hod
 Illin
 Indit
 low
 Jan
 July
 Jun
 Kan
 Ken
 List
 "
 Lou
 Mal
 Mar
 Mar
 Ma
 Ma
 Mir

G.

	PAGE.
Grand Divisions, Dates of Organization of,	102
" " Form of Application for charter for,	30
" " Lists of Officers of, 14, 36; 43, 45, 47, 50, 52, 55, 57, 58, 61, 62, 66, 67, 68, 69, 72, 73, 75, 76, 81, 87, 88, 90, 91, 92, 94, 96, 97, 98, 99, 100, 101	103
Grand Scribes, List of,	103
Great Britain and Ireland, (September),	24

PAGE.
22
20
30
28
14, 15
22, 23

H.

History of the Sons of Temperance,	6
Hodges, Samuel W., Sons of Temperance Supplies, 4, 8, 26, 28, 30	30

I.

Illinois,	35, 62
Indiana,	34, 73
Iowa,	98

94
35, 100
35, 81
18
33, 50

J.

January Calendar,	8, 9
July Calendar,	20, 21
June Calendar,	18, 19

K.

Kansas,	98
Kentucky,	35, 61

102
30, 31
34, 57
35, 91

L.

List of Grand Divisions,	102
" " Scribes,	103
Louisiana, List of Divisions, (July),	20

32, 36

M.

Maine,	34, 55
March Calendar,	12, 13
Maryland,	33, 45
Massachusetts,	34, 52
May Calendar,	16, 17
Minnesota, (September),	24

10, 11
20
30
28

	PAGE.
Mississippi, List of Divisions, (July,)	20
Missouri,	67
N.	
"Nation," A weekly newspaper, (August,)	22
National Division of North America, Officers of,	32
" " Members present at 23d session of,	32
"National Temperance Advocate," newspaper, monthly,	16
National Temperance Society and Publication House,	16
Nevada, (September,)	24
New Brunswick,	35, 69
Newfoundland,	99
New Hampshire,	35, 68
New Jersey,	33, 43, 101
New South Wales, List of Divisions, (April,)	14
North Carolina,	72
Nova Scotia,	35, 76
November Calendar,	28, 29
O.	
October Calendar,	26, 27
Officers of Grand Divisions, 14, 36, 43, 45, 47, 50, 52, 55, 57, 58,	
61, 62, 66, 67, 68, 69, 72, 73, 75, 76, 81, 87,	
88, 90, 91, 92, 94, 96, 97, 98, 99, 100, 101	
Officers of National Division,	8, 32
Ohio,	34, 97
Oregon, (September,)	24
Organization of Grand Divisions, dates of,	102
P.	
Pennsylvania,	33, 47
Preface,	5
Prince Edward Island,	88
R.	
Representatives elected to National Division, 36, 43, 46, 47, 51,	
52, 56, 58, 59, 61, 63, 66, 67, 68, 69, 70, 72, 73, 75,	
76, 81, 87, 89, 90, 91, 93, 95, 96, 97, 98, 99, 100	
Rhode Island,	25, 66

INDEX.

PAGE.	S.	PAGE.
20	September Calendar,	24, 25
07	Sons of Temperance, History of,	6
	South Carolina,	35
	Stearns, John N.	8, 10, 12, 16
22		
32		
32		
ly, 16	T.	
16	Temperance newspapers, (May and August,)	16, 22
24	Tennessee,	34, 58
.35, 69	Texas,	100
99		
.35, 68	V.	
43, 101	Vermont,	35, 75
14	Virginia,	35, 87
72		
.35, 76	W.	
.28, 29	"Western Temperance Advocate," newspaper, semi- monthly, (August,)	22
	Western New York,	32, 92
.26, 27	West Virginia,	35, 96
57, 58,	Wisconsin,	90
81, 87,		
100, 101	Y.	
8, 32	"Youth's Temperance Banner," newspaper, monthly,	16
.34, 97		
24		
102		
.33, 47		
5		
88		
47, 51,		
73, 75,		
99, 100		
35, 66		



