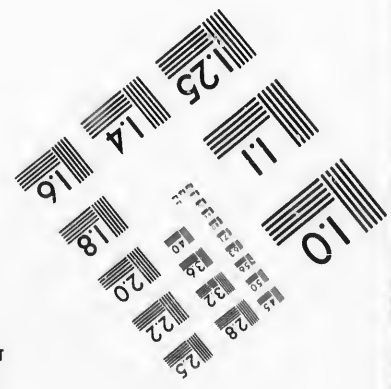
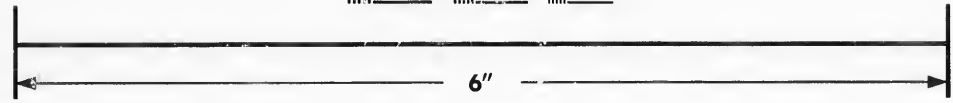
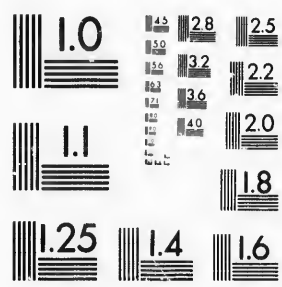


**IMAGE EVALUATION
TEST TARGET (MT-3)**



**Photographic
Sciences
Corporation**

23 WEST MAIN STREET
WEBSTER, N.Y. 14580
(716) 872-4503

Can

**CIHM/ICMH
Microfiche
Series.**

**CIHM/ICMH
Collection de
microfiches.**



Canadian Institute for Historical Microreproductions / Institut canadien de microreproductions historiques

© 1987

Technical and Bibliographic Notes/Notes techniques et bibliographiques

The Institute has attempted to obtain the best original copy available for filming. Features of this copy which may be bibliographically unique, which may alter any of the images in the reproduction, or which may significantly change the usual method of filming, are checked below.

L'Institut a microfilmé le meilleur exemplaire qu'il lui a été possible de se procurer. Les détails de cet exemplaire qui sont peut-être uniques du point de vue bibliographique, qui peuvent modifier une image reproduite, ou qui peuvent exiger une modification dans la méthode normale de filmage sont indiqués ci-dessous.

- Coloured covers/
Couverture de couleur
- Covers damaged/
Couverture endommagée
- Covers restored and/or laminated/
Couverture restaurée et/ou pelliculée
- Cover title missing/
Le titre de couverture manque
- Coloured maps/
Cartes géographiques en couleur
- Coloured ink (i.e. other than blue or black)/
Encre de couleur (i.e. autre que bleue ou noire)
- Coloured plates and/or illustrations/
Planches et/ou illustrations en couleur
- Bound with other material/
Relié avec d'autres documents
- Tight binding may cause shadows or distortion along interior margin/
La reliure serrée peut causer de l'ombre ou de la distorsion le long de la marge intérieure
- Blank leaves added during restoration may appear within the text. Whenever possible, these have been omitted from filming/
Il se peut que certaines pages blanches ajoutées lors d'une restauration apparaissent dans le texte, mais, lorsque cela était possible, ces pages n'ont pas été filmées.
- Additional comments:/
Commentaires supplémentaires:

- Coloured pages/
Pages de couleur
- Pages damaged/
Pages endommagées
- Pages restored and/or laminated/
Pages restaurées et/ou pelliculées
- Pages discoloured, stained or foxed/
Pages décolorées, tachetées ou piquées
- Pages detached/
Pages détachées
- Showthrough/
Transparence
- Quality of print varies/
Qualité inégale de l'impression
- Includes supplementary material/
Comprend du matériel supplémentaire
- Only edition available/
Seule édition disponible
- Pages wholly or partially obscured by errata slips, tissues, etc., have been refilmed to ensure the best possible image/
Les pages totalement ou partiellement obscurcies par un feuillet d'errata, une pelure, etc., ont été filmées à nouveau de façon à obtenir la meilleure image possible.

This item is filmed at the reduction ratio checked below/
Ce document est filmé au taux de réduction indiqué ci-dessous.

10X	12X	14X	16X	18X	20X	22X	24X	26X	28X	30X	32X
					✓						

The copy filmed here has been reproduced thanks to the generosity of:

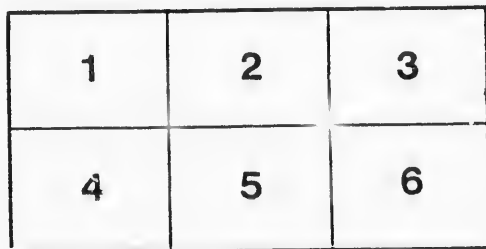
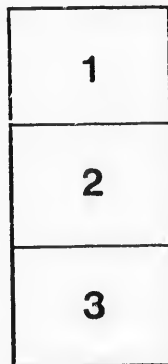
Metropolitan Toronto Library
Canadian History Department

The images appearing here are the best quality possible considering the condition and legibility of the original copy and in keeping with the filming contract specifications.

Original copies in printed paper covers are filmed beginning with the front cover and ending on the last page with a printed or illustrated impression, or the back cover when appropriate. All other original copies are filmed beginning on the first page with a printed or illustrated impression, and ending on the last page with a printed or illustrated impression.

The last recorded frame on each microfiche shall contain the symbol \rightarrow (meaning "CONTINUED"), or the symbol ∇ (meaning "END"), whichever applies.

Maps, plates, charts, etc., may be filmed at different reduction ratios. Those too large to be entirely included in one exposure are filmed beginning in the upper left hand corner, left to right and top to bottom, as many frames as required. The following diagrams illustrate the method:



L'exemplaire filmé fut reproduit grâce à la générosité de:

Metropolitan Toronto Library
Canadian History Department

Les images suivantes ont été reproduites avec le plus grand soin, compte tenu de la condition et de la netteté de l'exemplaire filmé, et en conformité avec les conditions du contrat de filmage.

Les exemplaires originaux dont la couverture en papier est imprimée sont filmés en commençant par le premier plat et en terminant soit par la dernière page qui comporte une empreinte d'impression ou d'illustration, soit par le second plat, selon le cas. Tous les autres exemplaires originaux sont filmés en commençant par la première page qui comporte une empreinte d'impression ou d'illustration et en terminant par la dernière page qui comporte une telle empreinte.

Un des symboles suivants apparaîtra sur la dernière image de chaque microfiche, selon le cas: le symbole \rightarrow signifie "A SUIVRE", le symbole ∇ signifie "FIN".

Les cartes, planches, tableaux, etc., peuvent être filmés à des taux de réduction différents. Lorsque le document est trop grand pour être reproduit en un seul cliché, il est filmé à partir de l'angle supérieur gauche, de gauche à droite, et de haut en bas, en prenant le nombre d'images nécessaire. Les diagrammes suivants illustrent la méthode.

MASSACHUSETTS LEGISLATURE—NORTHEASTERN
BOUNDARY.

RESOLUTIONS

OF THE

LEGISLATURE OF MASSACHUSETTS,

Concerning the Northeastern Boundary.

MAY 21, 1838.

Committed to the same Committee of the Whole to which is committed bill on the same subject.

COMMONWEALTH OF MASSACHUSETTS.

Resolves concerning the Northeastern boundary.

Resolved, That the claim of Great Britain to all the territory in the State of Maine lying north of Mars hill and the tributary waters of the Penobscot, is totally inconsistent with the treaty of peace of seventeen hundred and eighty-three; and will, if persisted in, inevitably tend to disturb the friendly relations now subsisting between that Government and the Government of the United States.

Resolved, That no power delegated by the constitution to the Government of the United States authorizes them to cede to a foreign nation any territory lying within the limits of either of the States in the Union.

Resolved, That the proposition made by the late Executive of the United States to the British Government, to seek for "the highlands" west of the meridian of the source of the river St. Croix, is a departure from the express language of the treaty of peace, an infringement of the rights of Massachusetts and Maine, and as its consummation involves a cession of State territory, is in derogation of the constitution of the United States.

Resolved, That the proposition recently made by the present national Executive to the Government of Maine, to substitute a "conventional line" for the line described in the treaty, is calculated to strengthen the claim of Great Britain, impair the honor of the United States, and put in jeopardy the interest of Massachusetts and Maine.

Resolved, That Congress be requested to cause the northeastern section of Maine to be speedily explored, and the boundary-line described in the treaty to be established.

Resolved, That his excellency the Governor be requested to transmit a copy of these resolves and the accompanying report to the Executive of the United States and of the several States; and, also, to each of our
Thomas Allen, print.

Senators and Representatives in Congress, with a request that they use all honorable means to bring this protracted controversy to a just and speedy termination.

HOUSE OF REPRESENTATIVES, *April 13, 1838.*

Passed:

ROBERT C. WINTHROP, *Speaker.*

IN SENATE, *April 14, 1838.*

Passed:

MYRON LAWRENCE, *President.*

April 19, 1838. Approved:

EDWARD EVERETT.

A true copy—Attest:

JOHN P. BIGELOW,
Secretary of the Commonwealth.

