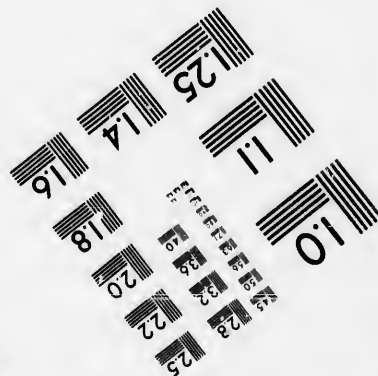
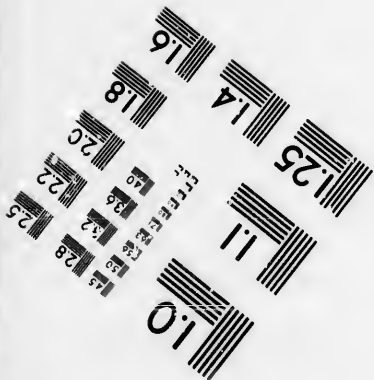
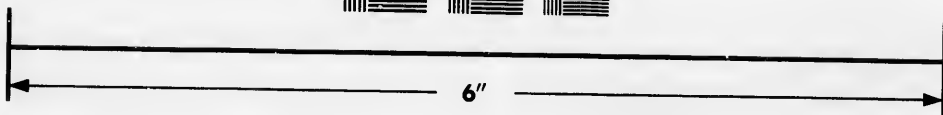
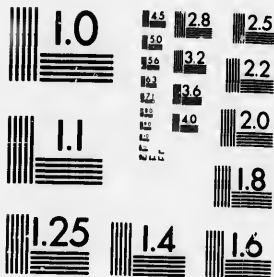


IMAGE EVALUATION
TEST TARGET (MT-3)



Photographic
Sciences
Corporation

23 WEST MAIN STREET
WEBSTER, N.Y. 14580
(716) 872-4503

**CIHM/ICMH
Microfiche
Series.**

**CIHM/ICMH
Collection de
microfiches.**



Canadian Institute for Historical Microreproductions / Institut canadien de microreproductions historiques

© 1986

Technical and Bibliographic Notes/Notes techniques et bibliographiques

The Institute has attempted to obtain the best original copy available for filming. Features of this copy which may be bibliographically unique, which may alter any of the images in the reproduction, or which may significantly change the usual method of filming, are checked below.

L'Institut a microfilmé le meilleur exemplaire qu'il lui a été possible de se procurer. Les détails de cet exemplaire qui sont peut-être uniques du point de vue bibliographique, qui peuvent modifier une image reproduite, ou qui peuvent exiger une modification dans la méthode normale de filmage sont indiqués ci-dessous.

- Coloured covers/
Couverture de couleur
- Covers damaged/
Couverture endommagée
- Covers restored and/or laminated/
Couverture restaurée et/ou pelliculée
- Cover title missing/
Le titre de couverture manque
- Coloured maps/
Cartes géographiques en couleur
- Coloured ink (i.e. other than blue or black)/
Encre de couleur (i.e. autre que bleue ou noire)
- Coloured plates and/or illustrations/
Planches et/ou illustrations en couleur
- Bound with other material/
Relié avec d'autres documents
- Tight binding may cause shadows or distortion along interior margin/
La reliure serrée peut causer de l'ombre ou de la distorsion le long de la marge intérieure
- Blank leaves added during restoration may appear within the text. Whenever possible, these have been omitted from filming/
Il se peut que certaines pages blanches ajoutées lors d'une restauration apparaissent dans le texte, mais, lorsque cela était possible, ces pages n'ont pas été filmées.

- Coloured pages/
Pages de couleur
- Pages damaged/
Pages endommagées
- Pages restored and/or laminated/
Pages restaurées et/ou pelliculées
- Pages discoloured, stained or foxed/
Pages décolorées, tachetées ou piquées
- Pages detached/
Pages détachées
- Showthrough/
Transparence
- Quality of print varies/
Qualité inégale de l'impression
- Includes supplementary material/
Comprend du matériel supplémentaire
- Only edition available/
Seule édition disponible
- Pages wholly or partially obscured by errata slips, tissues, etc., have been refilmed to ensure the best possible image/
Les pages totalement ou partiellement obscurcies par un feuillet d'errata, une pelure, etc., ont été filmées à nouveau de façon à obtenir la meilleure image possible.

Additional comments: / This copy is a photoreproduction.
Commentaires supplémentaires:

This item is filmed at the reduction ratio checked below/
Ce document est filmé au taux de réduction indiqué ci-dessous.

10X	14X	18X	22X	26X	30X
<input type="checkbox"/>	<input type="checkbox"/>	<input type="checkbox"/>	<input checked="" type="checkbox"/>	<input type="checkbox"/>	<input type="checkbox"/>
12X	16X	20X	24X	28X	32X

The copy filmed here has been reproduced thanks to the generosity of:

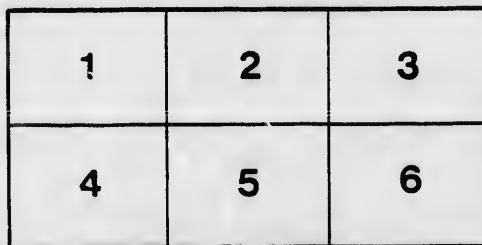
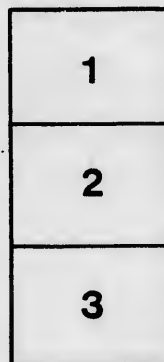
D. B. Weldon Library
University of Western Ontario
(Regional History Room)

The images appearing here are the best quality possible considering the condition and legibility of the original copy and in keeping with the filming contract specifications.

Original copies in printed paper covers are filmed beginning with the front cover and ending on the last page with a printed or illustrated impression, or the back cover when appropriate. All other original copies are filmed beginning on the first page with a printed or illustrated impression, and ending on the last page with a printed or illustrated impression.

The last recorded frame on each microfiche shall contain the symbol \rightarrow (meaning "CONTINUED"), or the symbol ∇ (meaning "END"), whichever applies.

Maps, plates, charts, etc., may be filmed at different reduction ratios. Those too large to be entirely included in one exposure are filmed beginning in the upper left hand corner, left to right and top to bottom, as many frames as required. The following diagrams illustrate the method:



L'exemplaire filmé fut reproduit grâce à la générosité de:

D. B. Weldon Library
University of Western Ontario
(Regional History Room)

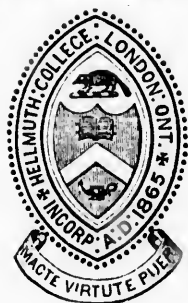
Les images suivantes ont été reproduites avec le plus grand soin, compte-tenu de la condition et de la netteté de l'exemplaire filmé, et en conformité avec les conditions du contrat de filmage.

Les exemplaires originaux dont la couverture en papier est imprimée sont filmés en commençant par le premier plat et en terminant soit par la dernière page qui comporte une empreinte d'impression ou d'illustration, soit par le second plat, selon le cas. Tous les autres exemplaires originaux sont filmés en commençant par la première page qui comporte une empreinte d'impression ou d'illustration et en terminant par la dernière page qui comporte une telle empreinte.

Un des symboles suivants apparaîtra sur la dernière image de chaque microfiche, selon le cas: le symbole \rightarrow signifie "A SUIVRE", le symbole ∇ signifie "FIN".

Les cartes, planches, tableaux, etc., peuvent être filmés à des taux de réduction différents. Lorsque le document est trop grand pour être reproduit en un seul cliché, il est filmé à partir de l'angle supérieur gauche, de gauche à droite, et de haut en bas, en prenant le nombre d'images nécessaire. Les diagrammes suivants illustrent la méthode.

DUFFERIN COLLEGE



—LATE—

HELLMUTH COLLEGE LONDON, ONTARIO.

FOUNDED BY THE RIGHT REVEREND I. HELLMUTH, D. D., D. C. L., LORD BISHOP OF HURON, A. D. 1865.

PATRONS.

HIS EXCELLENCY EARL DUFFERIN,
Late Gov.-Gen. of Canada.

RIGHT REV. I. HELLMUTH, D.D.,
Lord Bishop of Huron.

RIGHT REV. A. SWEATMAN, D. D., Lord Bishop of Toronto.

VISITORS.

THE VERY REV. DEAN BOOMER, D.D.

VEN. ARCHDEACON ELWOOD, M.A.

REV. CANON INNES, M.A.

PRINCIPAL.

REV. H. F. DARNELL, D. D.

(Late of Queen's College, Cambridge.)

PROFESSORIAL STAFF:

REV. H. F. DARNELL, D.D.,

} Professor of Classics and Advanced English.

THE REV. C. B. GUILLEMONT, B.A.,
(late of the University of Paris, France,)

} Professor of French Language and Literature.

HERR BOEHM, — German and Mathematics.

W. N. YEREX, — Penmanship and Commerce.

LT. COL. G. W. GRIFFITHS, — Engineering and Surveying.

Music and Drawing by fully qualified Instructors.

COMMANDANT.

LT.-COL. G. WAINWRIGHT GRIFFITHS.

Assisted by a competent Sergeant from the Regular Service.

PHYSICIAN.

A. G. FENWICK, Esq., M. D.

ACCOUNTANT.

GEORGE F. JEWELL, Esq.

Applications for admission, and for all further particulars, to be made to the
REV. H. F. DARNELL, D. D., Principal, Dufferin College, London, Ont.

Artist, Classical Professor!
Rev. W. B. Hill:

DUFFERIN COLLEGE

This Institution provides a Classical, Scientific and Commercial Education of the first class—including the MODERN LANGUAGES—for the sons of gentlemen, commensurate with the requirements of the times.

THE DISCIPLINE OF THE COLLEGE is based, as nearly as possible, upon the model of the great public schools of England and Germany in which the military system has been adopted.

The utmost care and attention are bestowed on the Moral and Religious Training of the Pupils, who are treated in every respect as gentlemen, and encouraged to prove themselves deserving of confidence. Due supervision over the pupils is exercised at all times; the PREPARATION of lessons is also under the superintendence of the Masters.

To secure every home comfort for the Boarding Pupils, a Lady of high character and experience is entrusted with the management of the Domestic Department.

The personal attention of the Principal is given to the supervision of every department in the College.

A first-class physician attends the Institution at very moderate charges.

BOARD AND TUITION FEES.

For Board, Washing and Tuition Fees, including English, Classics, Mathematics, the Modern Languages, and all the other branches (except Music and Drawing).	\$250 per annum.
Day Pupils,	\$20, \$30 and \$40 "

A Reduction is made in the case of Sons of Clergymen received as boarders.

THE ONLY EXTRAS ARE AS FOLLOWS:

Private Room,	\$10 per Term.
Music, and use of Piano,	\$15 "
Drawing,	\$10 "
Board during Christmas Vacation,	\$15.

The payments for Board and Tuition, which are apportioned between the Three Collegiate Terms, must be made STRICTLY IN ADVANCE, at the commencement of each Term, viz.: on the 15th of September; 1st of December; 1st of April.

Books and School Stationery furnished at a very reasonable rate.

N. B.—For the use of Bed, Bedding, Towels, Plate, etc., during the whole period of a *Pupil's residence in College*, an Entrance Fee of \$12 is charged. All breakages must be paid for.

No pupil will be admitted into the College who is over Fourteen years of age, unless furnished with a certificate of good conduct from last School, or from the Clergyman of the parish.

In the case of pupils entering under Twelve, the charge will be reduced to \$200 per annum for the entire School course.

Pupils may enter at any time by paying for remaining part of the Term.

Yearly Scholarships, payable in advance, may be secured at a reduction of \$50.

No advances can be made to the Pupils, except from deposits left with the Principal for that purpose.

VACATIONS.

THE VACATIONS are: (1.) From 21st December to 20th January; (2.) From 1st July to 15th September. *NO EASTER VACATION.*

CL
TH
the fol
Ea
A
years o
space
circum
Pupils
TH
the Pr
H
Classi
throug
a high
N
his ge
Diplom
Exami
R
and I
Scien
Outlu
I
Syno
Draw
Arith
Algeb
Fren
I
Deriv
Univ
*Mou
Diag
Latin
Syno
whol
of e

CLASSES, COURSE of INSTRUCTION, Etc.

The Pupils attending the College are divided into *Six Forms*, which are included in the following Departments—PRIMARY, ACADEMIC AND COLLEGIATE.

Each Department usually embraces a two-years' course.

A youth of ordinary intelligence and application entering the College at ten or eleven years of age, can complete the entire course of study and obtain his Diploma within the space of Six Years. Pupils joining at an earlier or later period will be dealt with as circumstances may demand. To derive full benefit from the course, it is most important that Pupils should enter at an early age.

The subjects marked thus (*) are taken up in succession, with Illustrative Lectures, the Pupils being required to take notes.

Having reached the Collegiate Department, students are permitted to follow out a Classical, Scientific or Commercial Course, as may be desired. Every Pupil must pass through the different Forms in due order; there can be no advancement from a lower to a higher one unless the appointed standard has been fully reached.

No Pupil will be admitted to, or retained in the Sixth (or Graduating) Form, except his general conduct be deserving of the approbation and confidence of the College Authorities. Diplomas, Medals and Prizes are awarded to the successful competitors at the General Examination, which takes place annually at the close of the Midsummer Term.

†† Special class in Engineering and Surveying.

CURRICULUM.

Primary Department—First and Second Forms.

Reading. Recitations, in prose and verse. Spelling. Dictation. English Grammar and Parsing. Elementary Geography. English and Scriptural History. Rudimentary Science. Writing. Arithmetic—to Vulgar Fractions. Mental Calculation. Invoices. Outline Maps. Latin and French—Rudiments. Object Drawing.

Academic Department—Third and Fourth Forms.

Reading. Elocution. Grammatical Analysis. Orthography. English Composition. Synonyms. English Literature. Political Geography. Roman and Grecian History. Drawing of Maps. Perspective Drawing. * Natural Science. * Chemistry. * Botany. Arithmatic—Vulgar and Decimal Fractions. Commercial Rules. Geometry—Books 1, 2, 3. Algebra—to Simple Equations. Latin—Cæsar, Sallust, Virgil, Ovid, with Prose Composition. French. German. Greek—Grammar, Exercises, Delectus, Gospel of St. John.

Collegiate Department—Fifth and Sixth Forms.

Reading from the best Authors. Elocution. Extempore Speaking. Philology. Derivations. English Composition. Abstracts. Criticisms, &c. Physical Geography. Universal Literature. Modern and Universal History. *Physiology. *Astronomy. *Geology. *Moral Philosophy. Arithmetic—completed. Book-Keeping. Drawing of Maps and Diagrams. Geometry and Algebra—completed. Trigonometry. *Mechanics. Mensuration. Latin—Prose and Verse Composition, Livy, Cicero, Horace, Terence. Greek—Composition. Synonyms, Homer, Xenophon, Lucian, Demosthenes. French and German.—advanced course.

Lectures on Biblical History and Evidences of Christianity will be delivered to the whole School the first half-hour on Wednesday and Saturday mornings.

Every class will pass periodically in Review before the Principal.

A Report will be furnished at the close of each Term as to the conduct and proficiency of every Pupil.

THE MOIR PRIZE.

Among the awards distributed by the Authorities for distinguished merit in regard to general good conduct, and advancement in the different branches of study, is the "*Moir Prize*," of which the following interesting account was given in the LONDON FREE PRESS:—

"On a recent visit to the Dufferin College, late Hellmuth College, Mr. W. Moir, of New York a former pupil, (who was, in his last year, "Captain" of the School, and who has always manifested a warm interest in its welfare,) informed the Principal, Rev. Dr. Darnell, that he intended to present a prize, annually, to that student who should stand highest in the estimation of the pupils generally. The "*Moir Prize*," so called from the name of the donor, consists of a gold plate of the same size and form as the impression of the College Arms, familiar to many of our readers. The design is elegantly chased, and the lozenge is clasped to a gold scroll bearing the College motto,—"*Macte virtute puer*." On the reverse side is inscribed—"Moir Prize," with the name of the recipient and the date of bestowal. The whole is fastened to a crimson riband. Altogether, the badge has a rich and most tasteful appearance. Its intrinsic worth is probably about \$20. The first award was made in the month of December, 1877, previous to the Christmas vacation, and the second in December, 1878.

YEARLY SCHOLARSHIPS.

A limited number of Yearly Scholarships are periodically issued, by means of which, in consideration of the payment in advance of the entire amount, a reduction of \$50 is secured upon the annual school charges. These Scholarships include Board, Washing, and instruction in all branches except Music and Drawing.

VACATIONS.

Pupils whose parents or friends reside at a distance can be comfortably boarded at the College through the vacations at very moderate charges.

JUNIOR DEPARTMENT.

Special arrangements have been made for the reception of younger boys, whose class-room and sleeping apartments are separate from those of the senior pupils. A good and efficient nurse is always provided in the College, and the attendance of a first-class physician can at any time be secured at a very limited expense.

COLLEGE UNIFORM.

The cost of uniform adopted by the College is as follows:

SUMMER SUIT.—(Serge with cloth facings)—from \$11.50 to \$16.50 (with cap) according to stature.

WINTER SUIT.—from \$12.00 to \$18.00.

OVERCOAT.—from \$7.00 to \$15.00.

WINTER CAP.—\$2.00.

Parents will find the Uniform suggested by the College authorities not only neat and gentleman-like in appearance, and conducive to order and self respect, but also the most economical school attire, when adopted throughout.

DISCIPLINE AND DRILL.

The system of discipline adopted pervades the entire institution. It induces self-restraint, and punctuality and precision in attendance upon the different roll-calls, as well as order and neatness throughout the Dormitories, &c., and a prompt obedience to the Rules.

The Drill, which every pupil is expected to take, and which is most beneficial to growing youths, is so arranged as in no way to interfere with the educational work of the College. The periods selected are frequent, but not too long in duration, so that the interest of pupils may be sustained and anything approaching to over-fatigue avoided.

There is no extra charge for the Drill, but a subscription of \$1.00 per term is paid by each pupil into the Military Chest, to meet contingent expenses.

