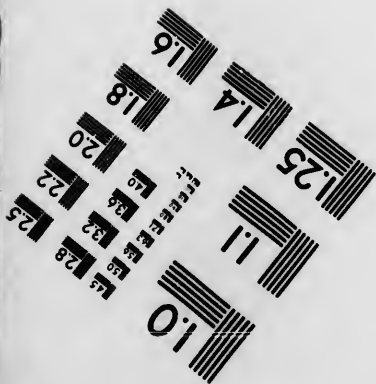
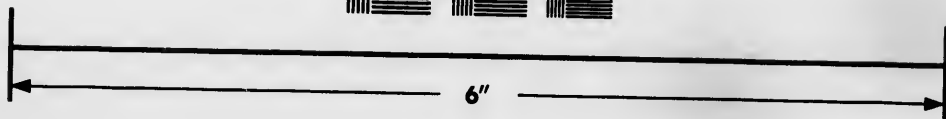
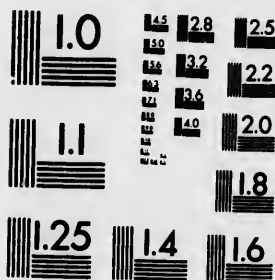


**IMAGE EVALUATION
TEST TARGET (MT-3)**



**Photographic
Sciences
Corporation**

23 WEST MAIN STREET
WEBSTER, N.Y. 14580
(716) 872-4503

**CIHM
Microfiche
Series
(Monographs)**

**ICMH
Collection de
microfiches
(monographies)**



Canadian Institute for Historical Microreproductions / Institut canadien de microreproductions historiques

© 1993

The copy filmed here has been reproduced thanks to the generosity of:

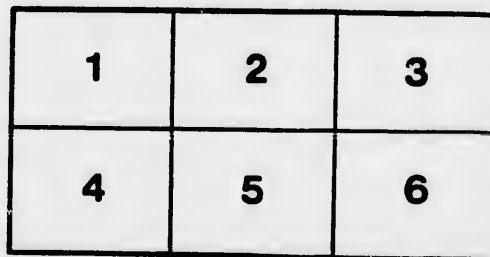
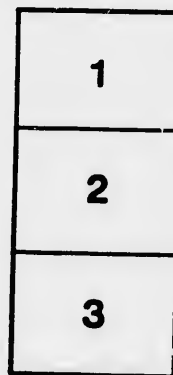
Nova Scotia Museum,
Halifax

The images appearing here are the best quality possible considering the condition and legibility of the original copy and in keeping with the filming contract specifications.

Original copies in printed paper covers are filmed beginning with the front cover and ending on the last page with a printed or illustrated impression, or the back cover when appropriate. All other original copies are filmed beginning on the first page with a printed or illustrated impression, and ending on the last page with a printed or illustrated impression.

The last recorded frame on each microfiche shall contain the symbol \rightarrow (meaning "CONTINUED"), or the symbol ∇ (meaning "END"), whichever applies.

Maps, plates, charts, etc., may be filmed at different reduction ratios. Those too large to be entirely included in one exposure are filmed beginning in the upper left hand corner, left to right and top to bottom, as many frames as required. The following diagrams illustrate the method:



L'exemplaire filmé fut reproduit grâce à la générosité de:

Nova Scotia Museum,
Halifax

Les images suivantes ont été reproduites avec le plus grand soin, compte tenu de la condition et de la netteté de l'exemplaire filmé, et en conformité avec les conditions du contrat de filmage.

Les exemplaires originaux dont la couverture en papier est imprimée sont filmés en commençant par le premier plat et en terminant soit par la dernière page qui comporte une empreinte d'impression ou d'illustration, soit par le second plat, selon le cas. Tous les autres exemplaires originaux sont filmés en commençant par la première page qui comporte une empreinte d'impression ou d'illustration et en terminant par la dernière page qui comporte une telle empreinte.

Un des symboles suivants apparaîtra sur la dernière image de chaque microfiche, selon le cas: le symbole \rightarrow signifie "A SUIVRE", le symbole ∇ signifie "FIN".

Les cartes, planches, tableaux, etc., peuvent être filmés à des taux de réduction différents. Lorsque le document est trop grand pour être reproduit en un seul cliché, il est filmé à partir de l'angle supérieur gauche, de gauche à droite, et de haut en bas, en prenant le nombre d'images nécessaire. Les diagrammes suivants illustrent la méthode.

1885.

THE RIDEAU FOUNDRY

1885.

AND

AGRICULTURAL WORKS

ILLUSTRATED CATALOGUE AND PRICE LIST

OF

IMPLEMENTS, Etc.

MANUFACTURED BY

J. H. GOULD,

SMITH'S FALLS, ONT.

RECORDER PRINTING CO., - - BROCKVILLE.

WARRANTY.

Every Machine manufactured at the Rideau Foundry is warranted to be well built of good material and capable of doing good work.

Office of the

*In our
friends and p
supply none
assure my pa
Implements*

Office of the

Rideau Foundry and Agricultural Works.



Smith's Falls, May 1, 1885.

In submitting my Catalogue for 1885, I embrace the opportunity to thank my numerous friends and patrons for their liberal support. It has always been my earnest wish and endeavor to supply none but the very best articles, and prompted by the success I have met with I beg to assure my patrons and the public generally that every attention will be given in the future to keep all Implements, both in workmanship and material, up to the standard they have attained in the past.

Yours respectfully,

J. H. Gould.

R

ice

IT

y-
a
id
w



G. KOPPEL, MONTREAL

THE NEW MODEL BUCKEYE MOWER
WITH IMPROVED TILT.

an
SH

it
wh
fir
to
M

THE NEW MODEL
BUCKEYE MOWER

A careful search among all the Mowing Machines now in use, will convince any person that for

SIMPLICITY, STRENGTH, DURABILITY, LIGHTNESS OF DRAUGHT
AND CLEAN CUTTING,

it stands unrivalled. The New Model is now known to the farmers' everywhere in the Dominion, and is the standard machine. In all the requisites of a first-class Mower, it stands foremost among the many now offered for sale, and to all who desire a perfect machine, we unhesitatingly recommend the *New Model Buckeye Mower*.

24 STEEL TEETH.

LIGHT AND SIMPLE.

STRONG AND DURABLE.



KOPPEL, MONTREAL.

ITHACA HORSE RAKE.

BLE.

ITHACA HORSE RAKE.

Our Rake is constructed of the best materials, carefully built, easy to operate ; free from all complicated machinery ; teeth are formed so as to adapt themselves to the ground ; is controlled with ease ; will pick up the hay clean ; and is the farmers' favorite.



PRICE

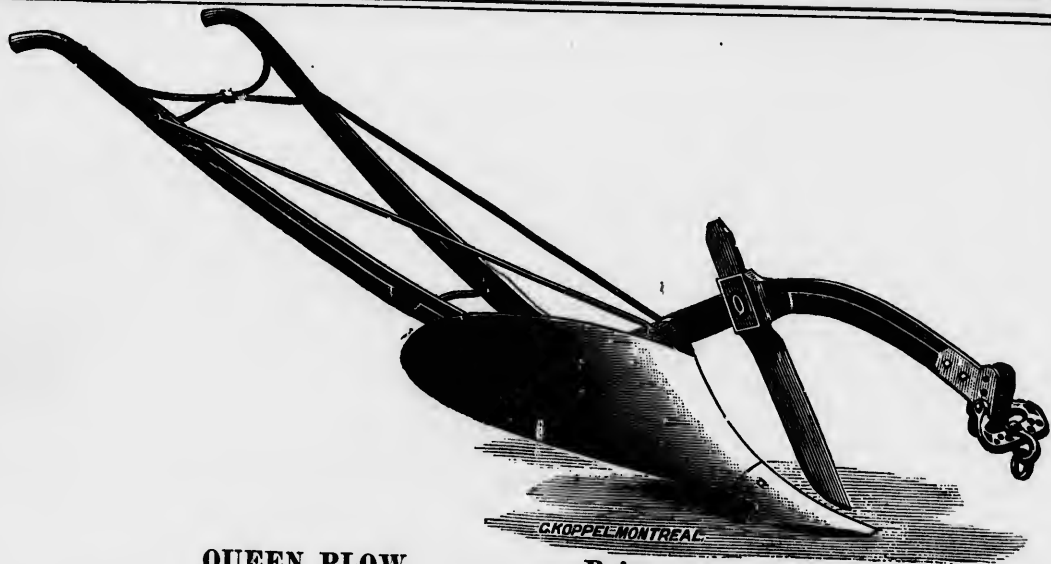
S

GANG PLOW.

WROUGHT IRON FRAME. STEEL MOULDBOARDS.

This is the *easiest* and *lightest running Gang Plow now made*. It is unsurpassed for strength and durability, and is guaranteed to do its work well.

All who have used it speak of it in the *highest terms*.



QUEEN PLOW.

Price.....

Wrought Iron Beam, Steel Mouldboard and Steel Landside, Malleable Coulter Box. This Plow is intended more especially for sod and has given general satisfaction wherever used.

Box
satis



No. 1 PLOW - Price

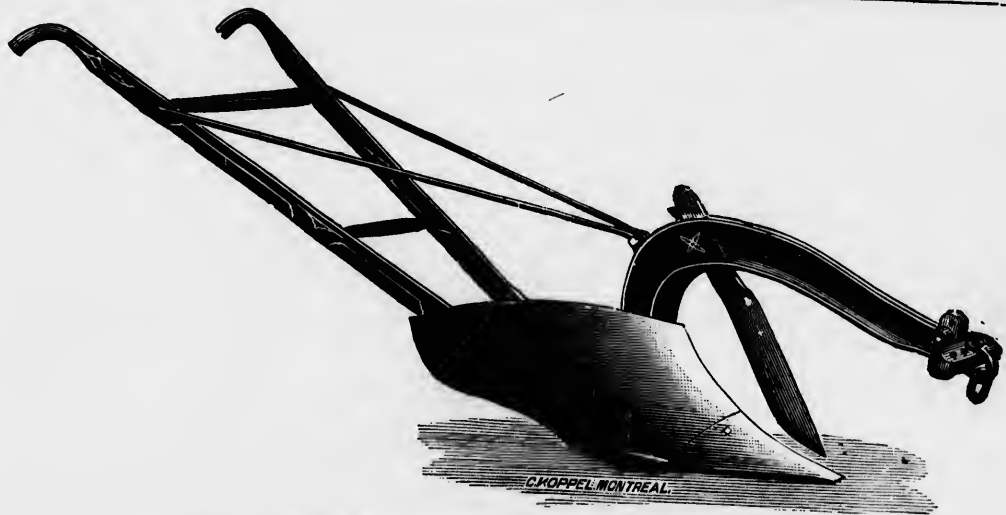
Wrought Iron Beam, Steel Mouldboard and Steel Landside, Malleable Coulters and Box. This is an excellent Plow for general purposes and has everywhere given general satisfaction.



No. 8 PLOW, . Price _____

Wrought Iron Beam, Steel Mouldboard and Steel Landside, with Malleable
Coulter Box. This is an extra first-class general purpose Plow.—Second to none.

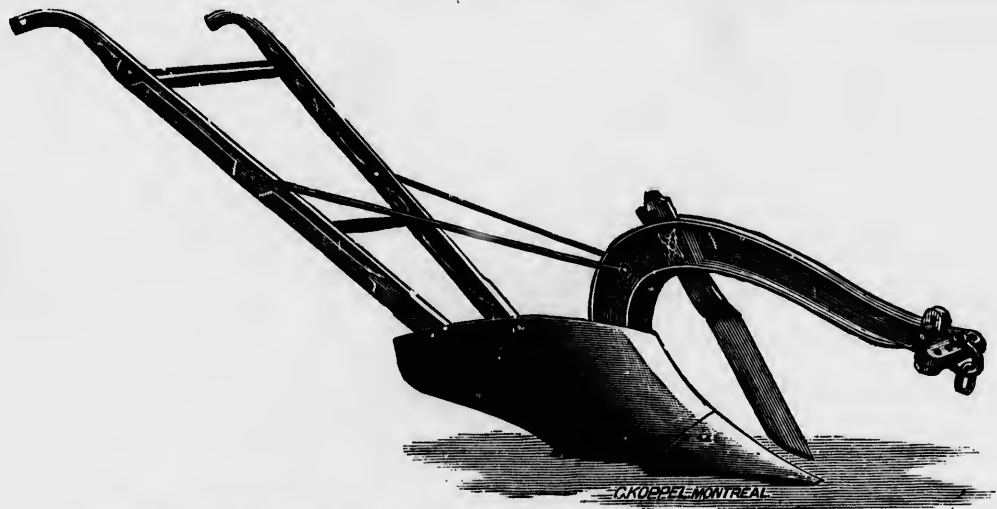
Plow



No. 7 PLOW, Price _____

Cast Iron Beam, Steel Mouldboard and Steel Landside. This is an excellent
Plow for general purposes.

leable
ne.



No. 3 PLOW, with Steel Mouldboard, Price _____
“ “ Cast “ “ _____

Celebrated as a good Stubble Plow.

SEEBER'S IMPROVED RANDALL HARROW

Is admitted by all Farmers using it to be the Best
Randall Harrow made.

It is connected to the frame by a universal joint, making it adjustable to the furrows and uneven surfaces of the ground, A lever is attached to the tongue by which it can instantly be set at any angle desired.

It is unequalled by any other implement in use for harrowing over sod or cultivating clay land.
It completely cuts and pulverizes all kinds of soil, leaving the land in excellent state for the seed.

PRICE, - - \$.....

HORSE HOES.

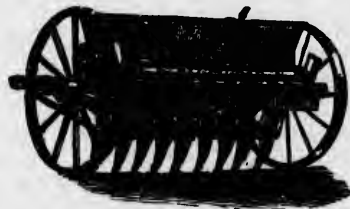
I also manufacture Horse Hoes for Hoeing Corn, Potatoes, Etc., which are a cheap and very useful article and give good satisfaction.

PRICE, - - \$.....

BUCKEYE FORCE FEED DRILL

AND GRASS SEED SOWER.

TEN TUBES.



Will Sow all kinds of Grain and Grass Seed.

These will sow Wheat, Rye, Barley, Oats, Flax Seed, Buckwheat, Hemp, Mellet, Clover and Timothy Seed, in any quantity desired.

Sows Grass Seed Broadcast either in front or behind the Drill.

PRICE, - \$60.00.

DRAG SAWING MACHINES

The great difficulty in this class of machinery heretofore has been the defective Power. The Power requires to be strong and yet easily handled.

OUR FOUR OR SIX HORSE PITTS POWER

for Driving Drag Saw Attachment is one of the most complete ever introduced to the public. The Power being very compact and strong is so arranged that the Log is drawn up by the horses.

Price with 4 Horse Power and Sawing attachment complete, \$115.00

Price Sawing Attachment with Self Gigger, Reverse Motion
and Jack for same for 4, 6 or 8 Horse Power without
Power..... \$55.00

CIRCULAR SAWING MACHINES

For Cutting Cordwood, with 28 inch Saw.....Price, \$45.

GRIST AND SAW MILL MACHINERY,

IMPROVED TURBINE WATER WHEELS,

GRIST AND SAW MILL CASTINGS,

—AND—

GEARING OF EVERY DESCRIPTION,

SHAFTING, HANGERS, PULLEYS,

AND ALL KINDS OF MILL WORK MADE TO ORDER AT THE
LOWEST PRICE

PRICE LIST

THE
 ION,
 RY,

PRICE LIST

—OF—

EXTRA PARTS OF PLOWS

Cast Iron Beams.....	\$3 00
Wrought Iron Beams.....	4 00
Standards.....	2 50
Steel Mouldboards.....	3 00
Steel Landsides.....	1 00
Cast Iron Mouldboards.....	1 50
Counters, Steeled.....	1 00
Malleable Coultter Boxes.....	50
Points.....	50
Soles.....	50
Brace Rods, each.....	25
Clevises.....	25
Clevis Pins.....	10
Coultter Wedges.....	10
Point Bolts.....	10
Mouldboard Bolts.....	05
Handles.....	50

EXTRA PARTS OF GANG PLOW.

Standards, each.....	\$1 00
Mouldboards, ".....	1 00
Points.....	30
Landsides, ".....	25
Axles, ".....	1 25
Wheels, ".....	1 50
Regulators.....	50
Ratchet Blocks.....	15
Hand Pieces.....	15
Lever Blocks.....	25
Clevises.....	25

EXTRA PARTS OF RANDALL HARROW.

Wheels each.....	40
Spools ".....	25
Outside Standards.....	40
Inside ".....	75
Chilled Boxes.....	

The Points for all Plows are made out of a Composition of Wrought Iron, Cast Iron and Steel and will outwear two or three ordinary Cast Iron Points.



L. Whitton. Agent. Boston

