

BY RIVER, LAKE & MOUNTAIN
THROUGH BRITISH COLUMBIA.



BIRCH TREE CHANNEL, UPPER COLUMBIA RIVER.

NEW GOLDEN, D.C.

River, Lake, and Mountain Scenery

.. OF ..



BRITISH

COLUMBIA

The Most Picturesque Province of the
Dominion of Canada



PUBLISHED BY

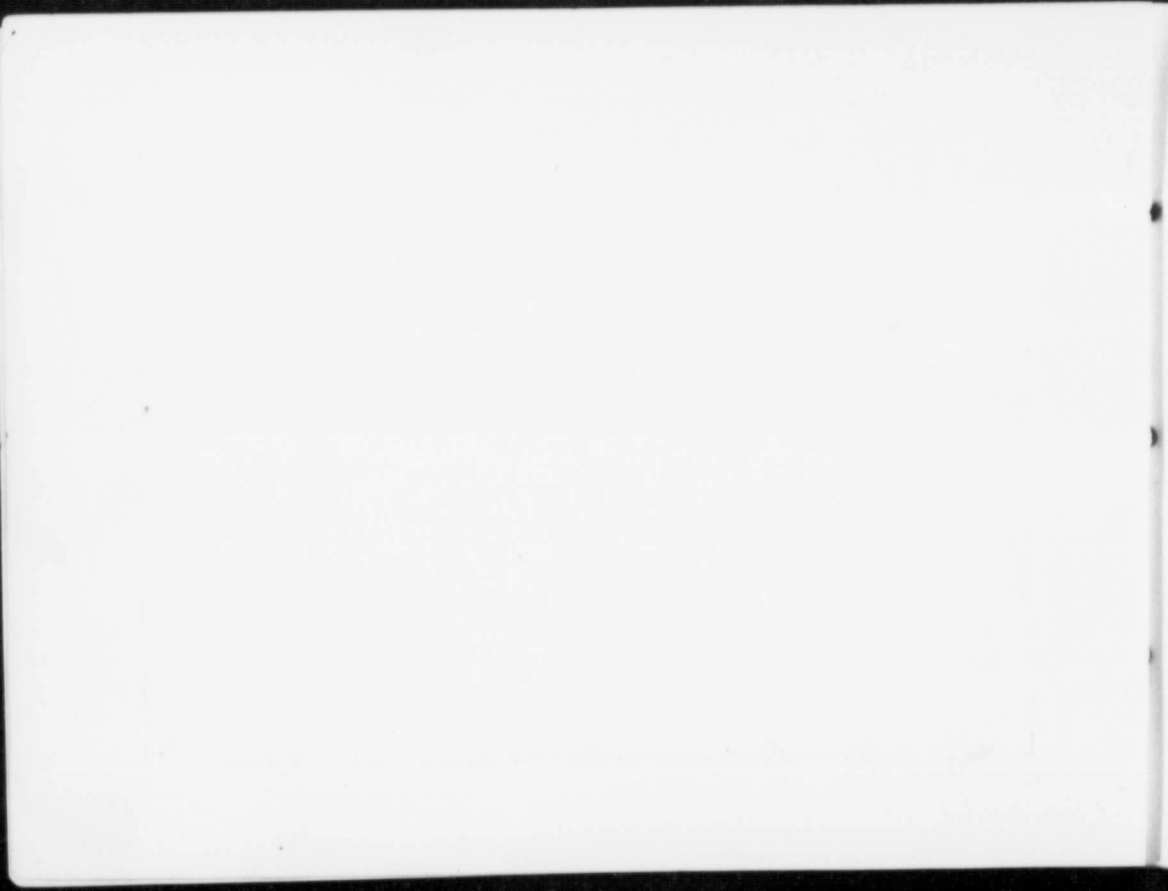
T. N. HIBBEN & CO., VICTORIA, BRITISH COLUMBIA.

WUP
971M
H624r



169109

INNER HARBOUR, VICTORIA, B.C., SHOWING C.P.R. S.S. "PRINCESS VICTORIA"
AT WHARF.

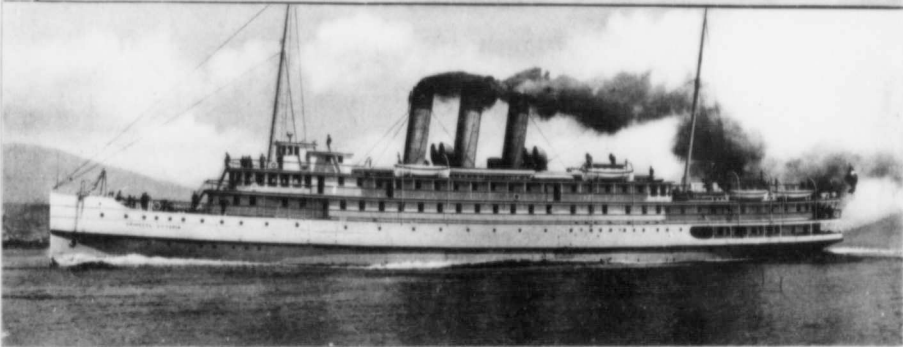




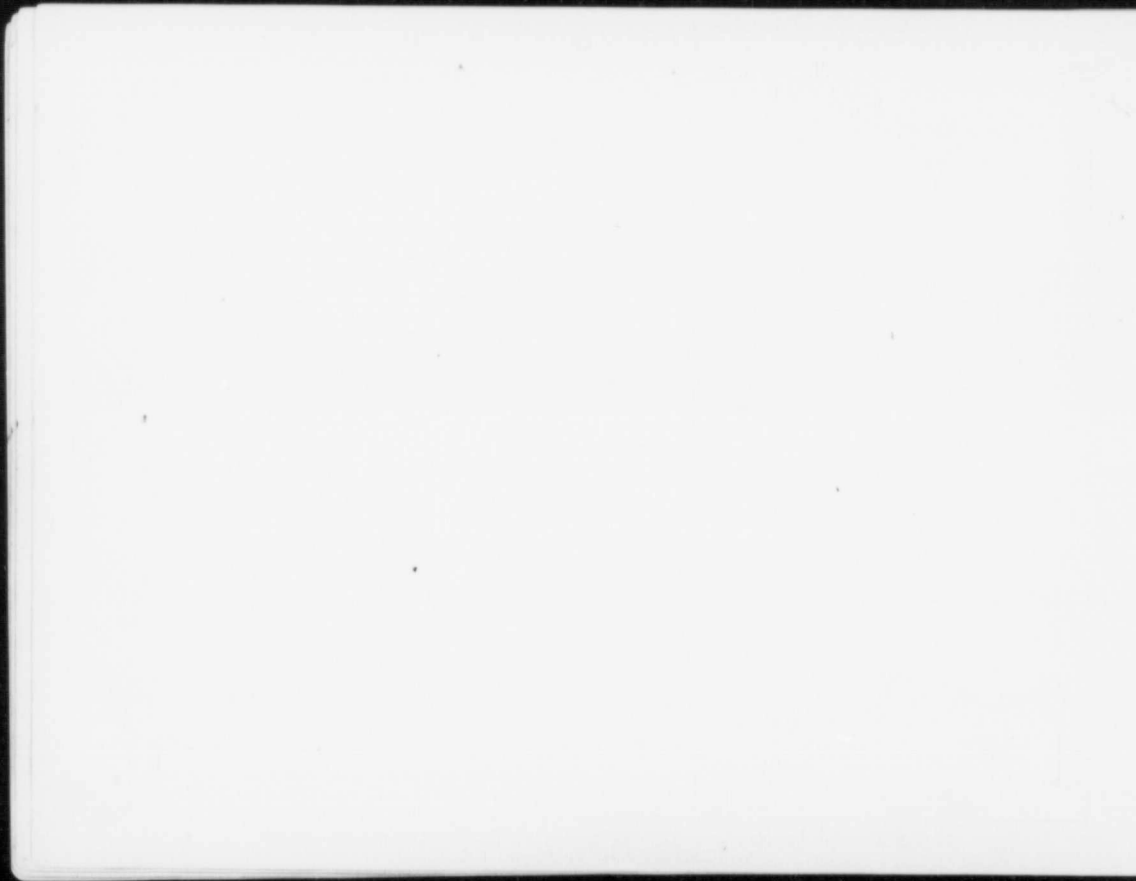
CANADIAN PACIFIC RAILWAY DEPOT AND DOCKS, VANCOUVER, B.C.



CANADIAN PACIFIC RAILWAY S.S. "PRINCESS VICTORIA" AT WHARF,
VANCOUVER HARBOUR.



CANADIAN PACIFIC RAILWAY S.S. "PRINCESS VICTORIA" SAILING BETWEEN
VANCOUVER AND VICTORIA, B.C.



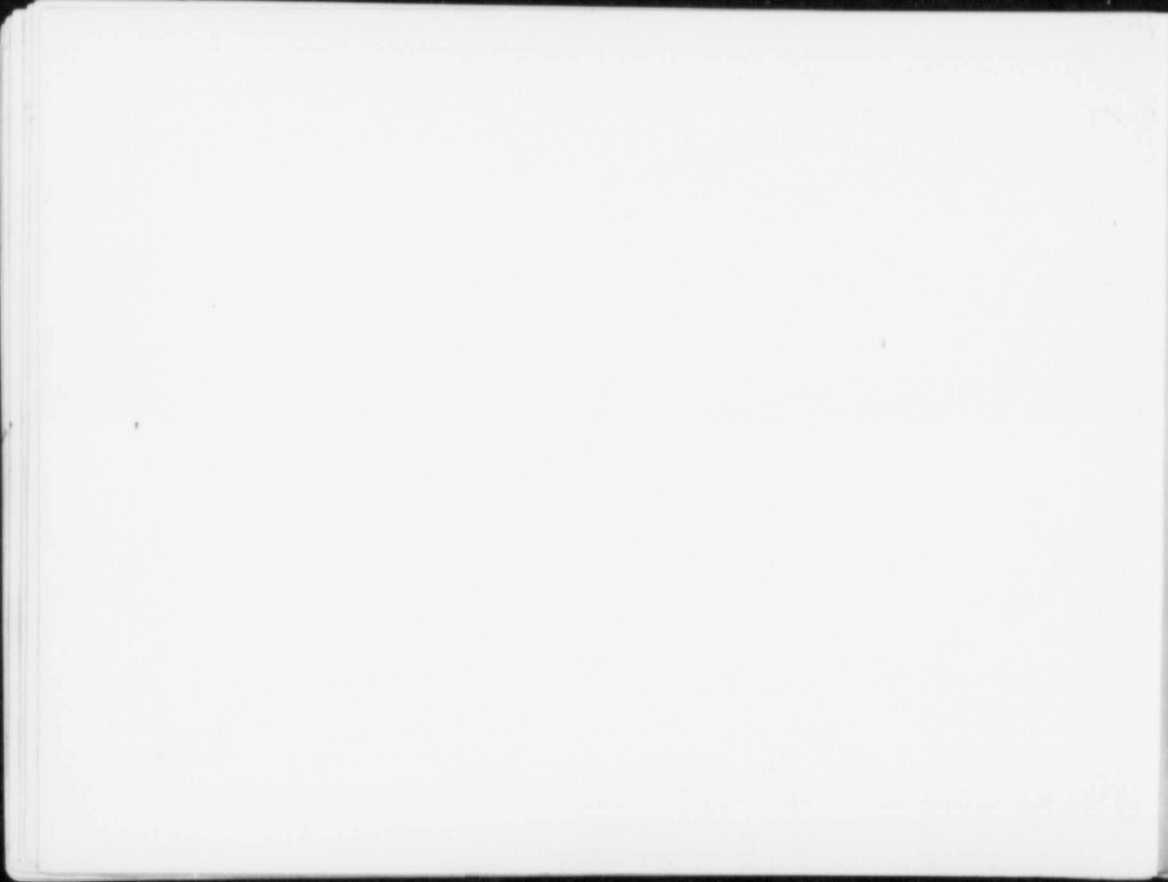


BIRCH TREE CHANNEL, UPPER COLUMBIA RIVER, NEAR GOLDEN, B.C.





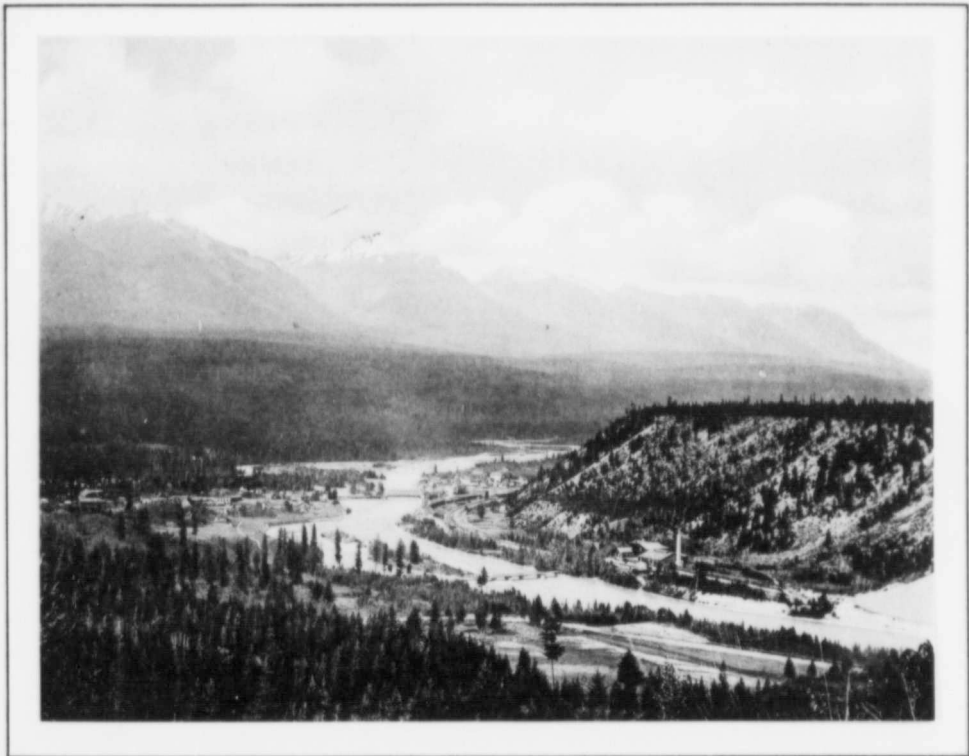
ON THE UPPER COLUMBIA RIVER, GOLDEN, B.C., SHOWING SELKIRKS.



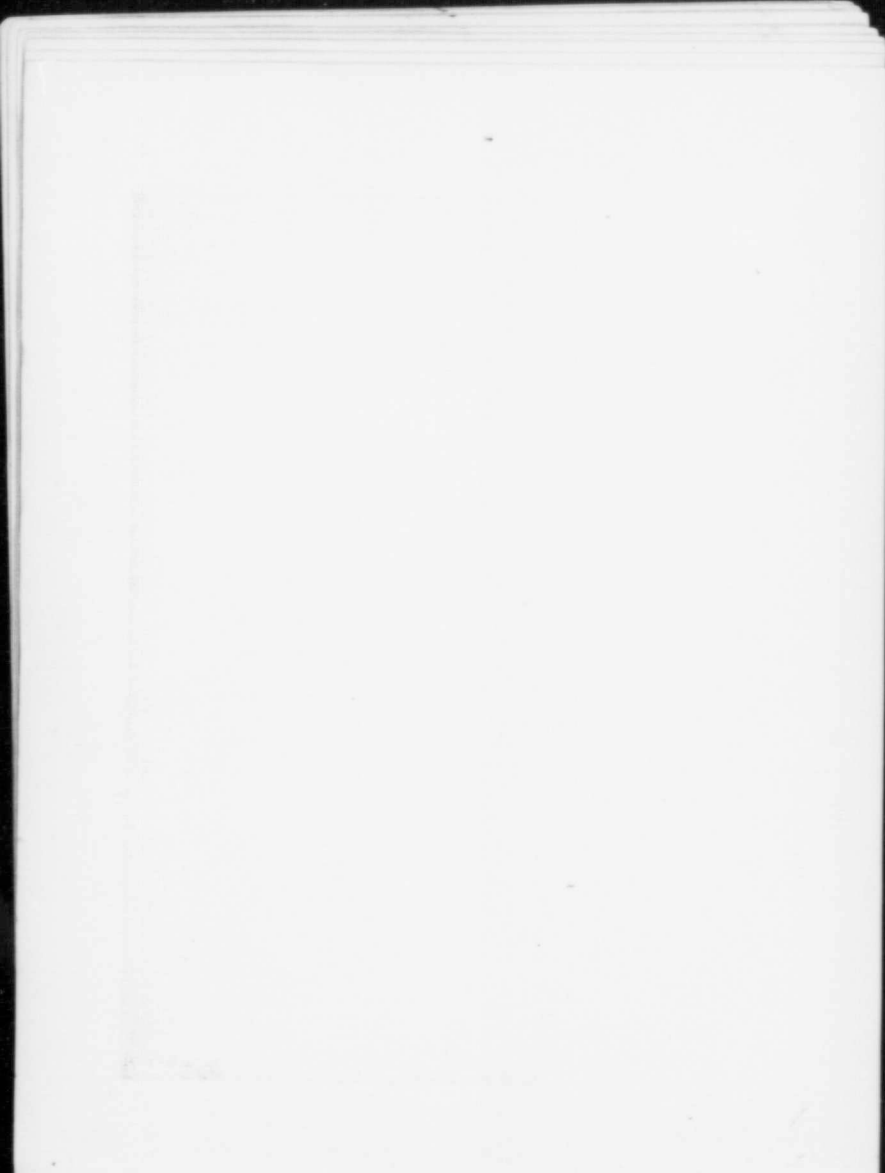


PHANTOM LAKE, LOOKING WEST, GOLDEN, B.C.



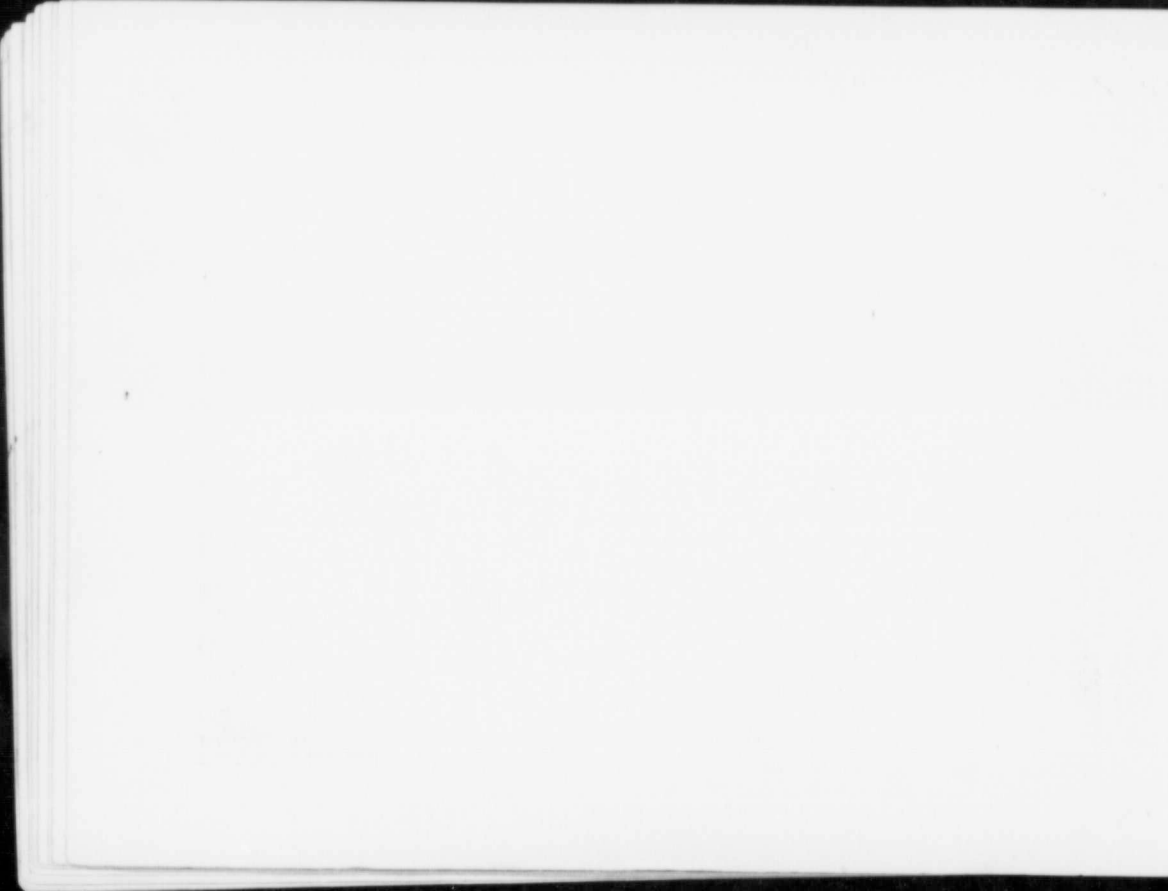


THE SELKIRKS, FROM GOLDEN, B.C., SHOWING KICKING HORSE RIVER.





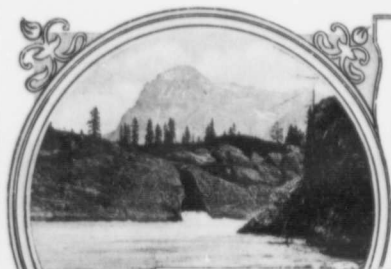
THE VALLEY OF THE UPPER COLUMBIA RIVER.





THE SELKIRKS, FROM GOLDEN, EAST KOOTENAY, B.C.





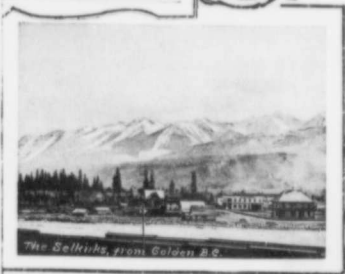
The Great
River at
Sturton
Field B.C.



On the Upper Columbia River
at Golden B.C.



The Valley of the Nicola
below Railroad Bridge, Field B.C.



The Delirius, from Golden B.C.





On the
Upper
Columbia
River
at Golden B.C.



On the Upper Columbia
at Golden B.C.



Mount Stephen, Field B.C.



Windermere East Kootenay B.C.





Armitage Channel, Upper Columbia River



On the Upper Columbia River at Golden B.C.



Armitage Channel, Upper Columbia River



Upper Columbia River, near Golden.





PHANTOM LAKE,
GOLDEN, Looking South.



NEAR WINDERMERE



THE MEETING OF THE WATERS.
WAPTA & COLUMBIA RIVERS
AT GOLDEN



THE ROCKIES FROM WILMER,
EAST KOOTENAY B.C.





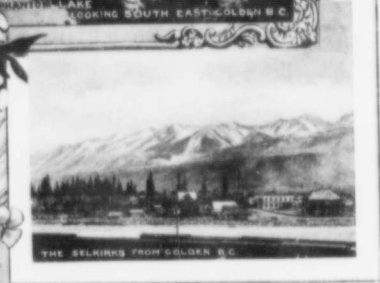
THE SELKINGS FROM GOLDEN B.C.



SHEPHERD LAKE
LOOKING SOUTH EAST GOLDEN B.C.

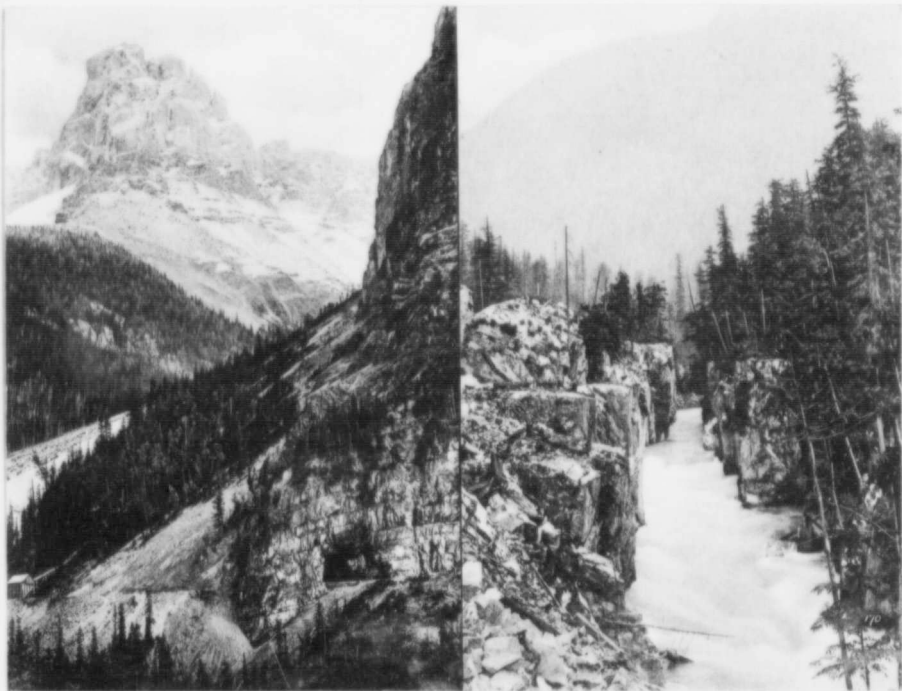


SLOCAN LAKE NEAR DENVER B.C.



THE SELKINGS FROM GOLDEN B.C.

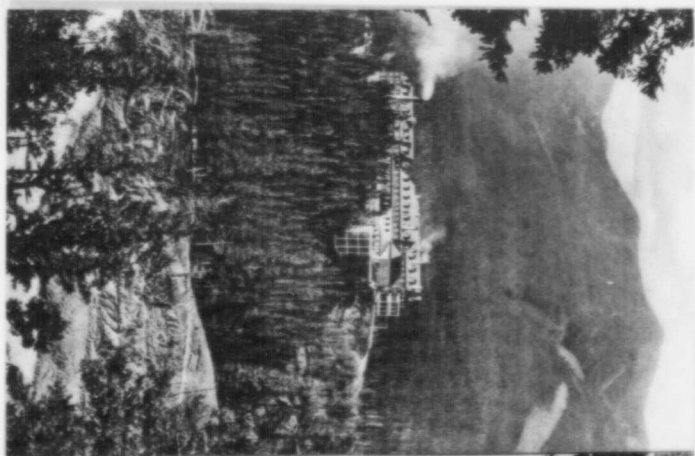




CATHEDRAL PEAK AND PART OF
MOUNT STEPHEN.

ILLI-CILLI-WAIT RIVER, FOUR MILES
EAST OF REVELSTOKE, B.C.





VIEW DOWN VALLEY FROM SNOWSHED No. 25,
SHOWING PART OF LOOP.



No. 1.



No. 2.



NO. 1.—ILLI-CILLI-WAIT VALLEY, AND GREAT LOOP OF C. P. R.

NO. 2.—MOUTH OF FRASER CANYON AND INDIAN RANCHERIE.





No. 1.



No. 2.

No. 1.—VIEW AT LOOP SHOWING RISE OF C. P. R. TRACK.

No. 2.—VIEW AT LOOP SHOWING FOUR TRACKS OF C. P. R.



No. 1.

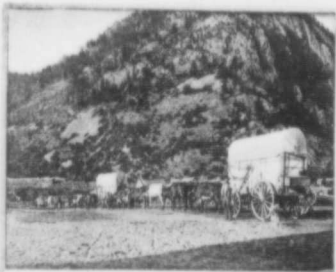


No. 2.

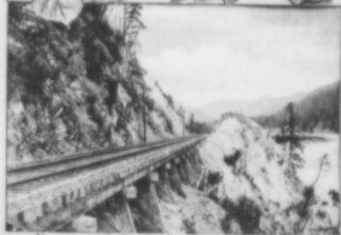


NO. 1.—ILLI-CILLI-WAIT RIVER AND SIR DONALD PEAK: VIEW NEAR LOOP.
NO. 2.—HERMIT MOUNTAIN: VIEW FROM GRADE $1\frac{1}{4}$ MILES WEST OF
RODGER'S PASS, C.P.R.





Ox-teams on the way to Caribou.



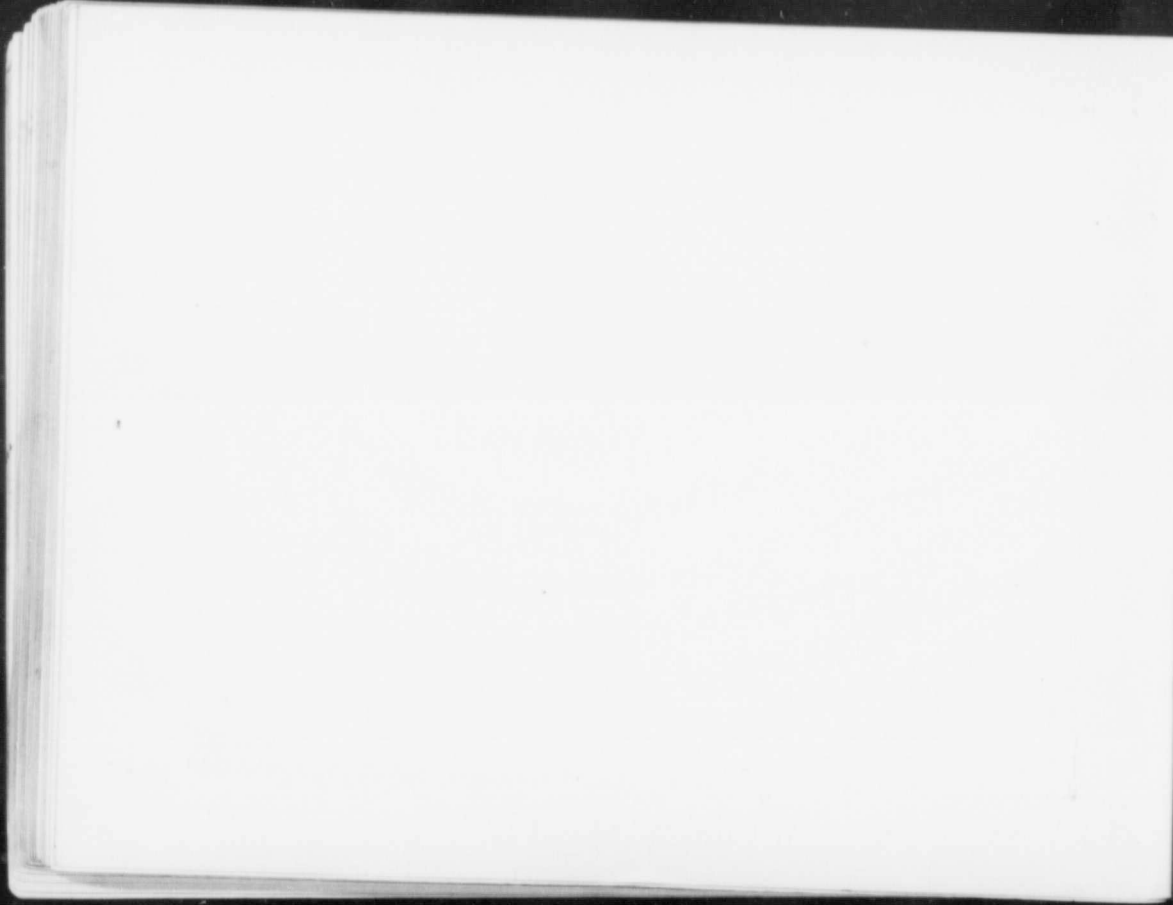
View opposite Hudson Bay Fraser River.



View looking towards Yale Tunnel No 1



Castle Mt. 6000 feet above Sea. Rocky Mountains.





MCKENZIE AVENUE, REVELSTOKE, B.C.





REVELSTOKE, B.C.





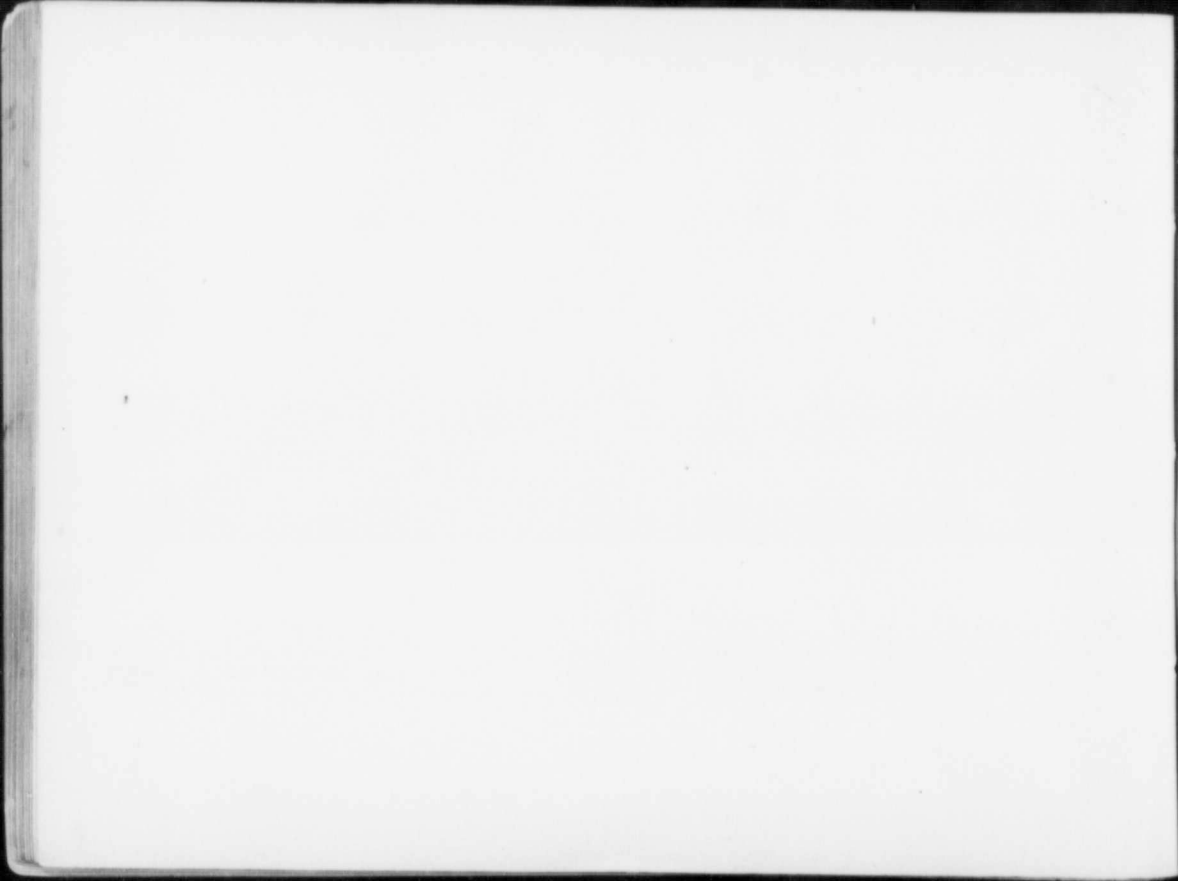
COKE OVENS, FERNIE, B.C.

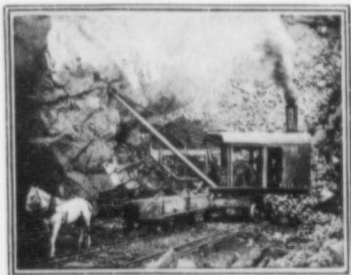




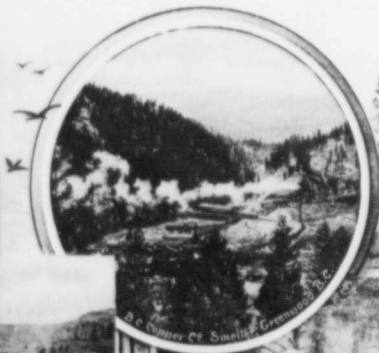
Market Street, Steamboat, N.P.



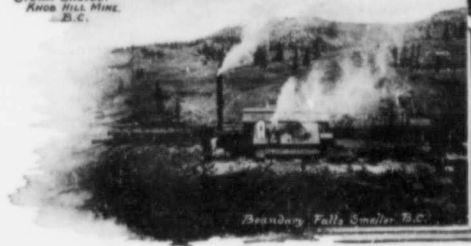




STEAM SHOVEL,
KNOB HILL MINE,
B.C.



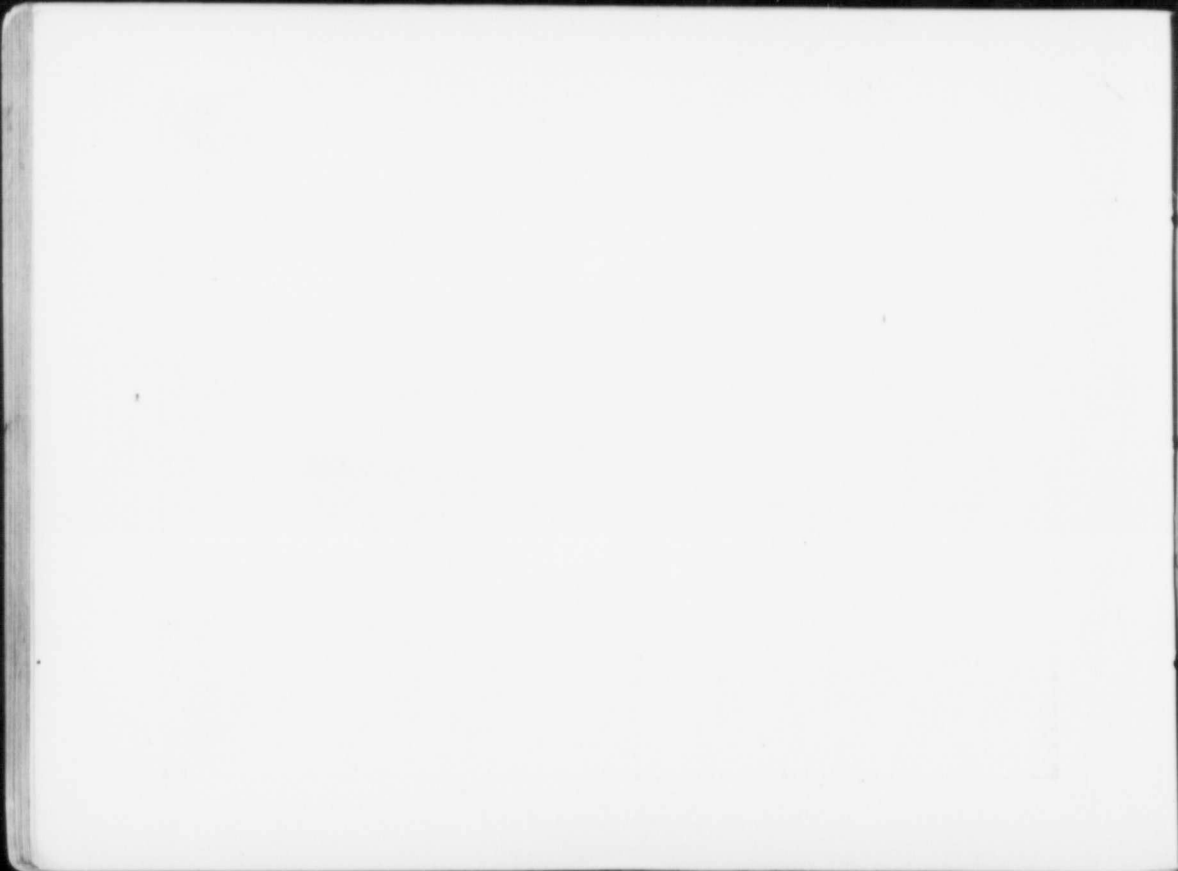
B.C. COPPER CO. SMELTER, GREENWOOD, B.C.



Beaumont Falls Smelter, B.C.



Elkhorn Mine, Greenwood





MOUNT ARROWSMITH, B.C.



Pine Trees
of
British
Columbia

