

Album of Views  
of the Classic City



SOUVENIR  
OF

VISIT OF  
SCOTCH CURLERS

January 28th, 1903

With the Compliments of

"The Stratford Beacon."

STRATFORD

Price,  
25 Cents.

A Railway and Manufacturing Centre



PRINTED AND ENBOSSED BY  
THE BEACON JOB DEPARTMENT



# STRATFORD The Classic City

**A**

N "ALBUM OF VIEWS OF STRATFORD" would be incomplete without a short reference to the foundation and growth of the Classic City from a mere spot on the map less than seventy years ago, to the present enterprising and progressive city.

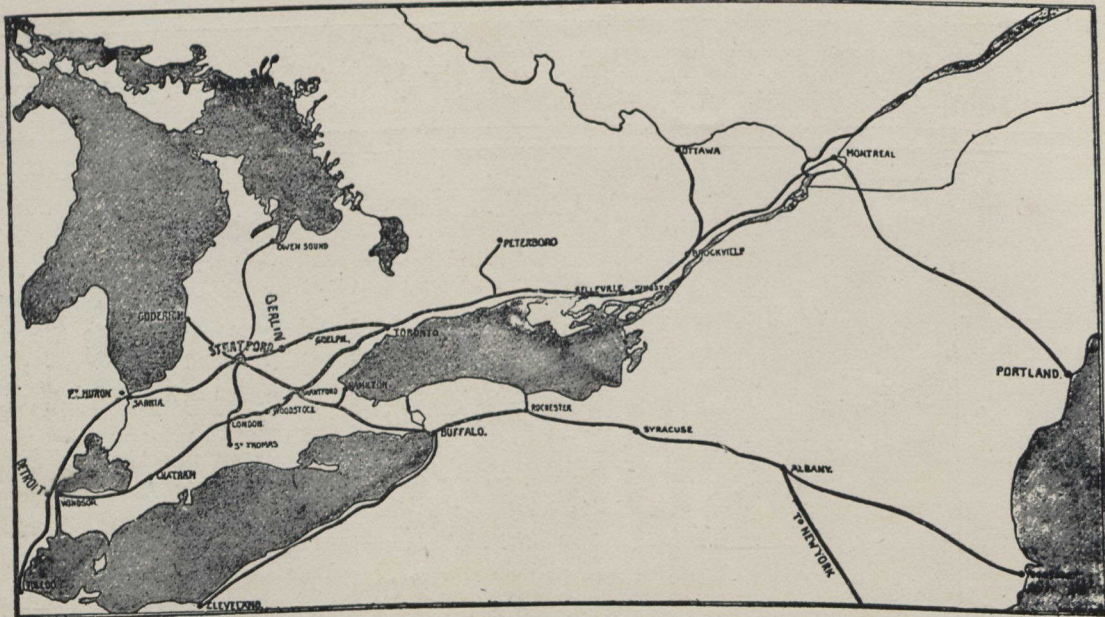
The idea of making Stratford a centre first suggested itself to the managers of the Canada Company, who in mapping out the "Huron Tract," selected the most central locality on the road leading from the "settlements" to the extreme frontier on Lake Huron, and Dr. Dunlop and Mr. John Galt, the local Commissioners, gave instructions for the founding of what about fifty years afterwards was to become the "Classic City." A glance at the map at once reveals Stratford's central location, but at the same time the founders unwittingly selected one of the highest points in Ontario. Our altitude is 1,191 feet above the sea level, no other city in the province approaching within two hundred feet of it. This feature in itself marks the city, all other things being equal, as the health resort par excellence of the province.

The first frame building in Stratford was erected in 1832, and in due course followed stores, grist mills, saw mills, and all the other necessities of an early settlement. The early growth of the place was slow, but possessed of superior natural advantages, it has within the memory of many living to-day been transformed from a few houses in the forest to a city of importance. In 1843 the population was about 900, but it was not until 1855 that it elected its first council. In 1859 it was incorporated as a town, and in 1884 as a city.

In 1858 the Buffalo & Lake Huron Railroad was completed, and this acted as a stimulus to the village, and in 1870, when the G. T. R. shops were located here, an additional impetus was given. Eighteen years later the shops were enlarged following the fusion of the G. T. R. and other lines, thus adding materially to the size and importance of the place.



Stratford is pre-eminently a railroad centre, as a glance at the map will show. It is on the main line of the G. T. R., and midway between Georgian Bay and Lake Erie, and Lake Huron and Lake Ontario. From the shippers' standpoint it possesses advantages enjoyed by few places. The divisional freight office is located here, and manufacturers and shippers have a pledge from the G. T. R. management that any rate given a rival industry will be met here, thus overcoming any imagined detriment in the lack of other railroad connection. Stratford possesses an energetic board of trade, which is ever willing to negotiate on liberal terms with manufacturers feeling disposed to locate here.



STRATFORD — A RAILWAY AND MANUFACTURING CENTRE

In the matter of schools and educational institutions the Classic City is unsurpassed by any place of its size in the Dominion. Its schools are models of construction and equipment, and its teachers of efficiency and thoroughness. Its Collegiate Institute is its pride, and it possesses a business college which attracts students from all over the province. It has, as well, libraries, literary societies and other institutions for the education and refinement of its citizens. Almost every phase of religious thought is represented in its numerous churches, several of the struc-



CITY ALDERMEN, MAYOR AND CLERK, 1902.

Standing, from Left—E. K. Barnsdale, E. H. Eidt, Thos. Savage, J. L. Bradshaw, R. R. Lang (Clerk), J. D. Barnett, Jas. Trow  
Seated, from Left—J. D. Hamilton, Henry Pauli, Jas. Stamp (Mayor), Wm. Davidson, Wm. Daly.



tures being marked by architectural beauty. All are well attended, and the religious life of the city is marked by broad-minded sympathy and co-operation.

The public buildings, notably the city hall, post office, court house, hospital and house of refuge, are all of a superior class. The business centre is noted for its many large, handsome structures, the uniform excellence of which gives it an appearance of solidity that few places of Stratford's size can boast of.

In addition to being a railway centre, Stratford is rapidly becoming a manufacturing centre. The Grand Trunk shops, said by competent judges to be the equal of any railway shops on the continent, employ 800 men, and there are 200 or 300 men engaged in the operation of the railway here, which make a railway population of about 1,000. Other industries which employ a large number of operatives are: The Stratford Mill Building Co. (Wm. Preston, proprietor), builders of roller mills and mill machinery; The Macdonald Manufacturing Co., manufacturers of threshing machinery; The George McLagan Furniture Co., limited, whose factory is second to none in the Dominion; The Canada Furniture Company's factory, which produces the highest grades of sideboards; The Stratford Bridge and Iron Works Co., builders of steel bridges and wind mills; The Whyte Packing Co., Limited, extensive exporters of bacon and other meats; the Perth Flax & Cordage Co., Limited, manufacturers of cordage and twines; the Dufton Woollen Mills; the Thornton & Douglas clothing factory; the Stratford Clothing Company's factory; The Globe-Wernicke Company's factory (now in course of erection), manufacturers of office supplies, the Canadian branch of the great Cincinnati, Ohio, factory; the Kalbfleisch bicycle factory; the Classic City Flour Mills; the Stratford Shoddy Mills (Baker & Son's); David Easson's furniture factory and planing mill; the Anchor Wire Fence factory (Messrs. Esplen & Frame); Ruston Bros.' planing mill, and several smaller industries.

Prominent among the financial institutions are the British Mortgage Loan Co., with a paid-up capital of \$450,000, and a reserve of \$140,000; the Perth Mutual Insurance Company, which operates all over the Province, and has a reserve fund of over \$100,000; the agencies of the Bank of Montreal, the Canadian Bank of Commerce, and the Merchants Bank of Canada, and the Stratford Loan and Building Society, a rising young institution.

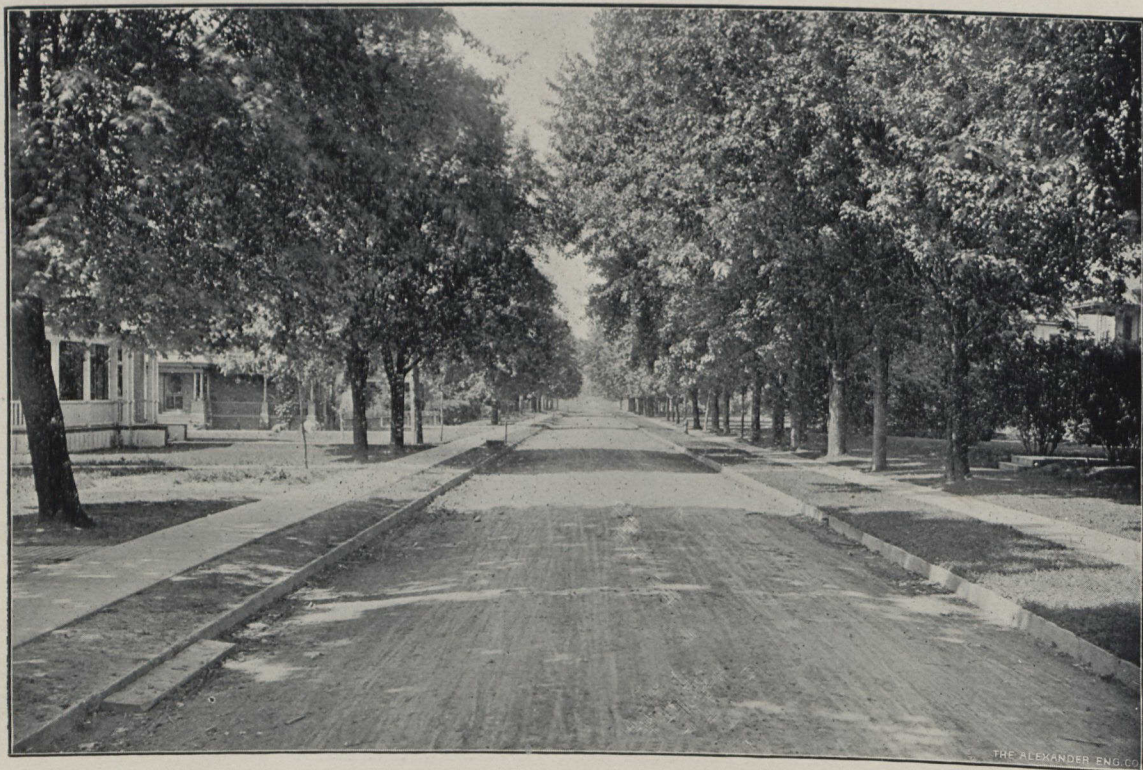
The city is well served with water, gas and electric light, and has a complete system of sewers, the output of which is treated on the septic tank and bacteria beds system before being emptied into the river. This system of treatment of sewage has passed the experimental stage in Stratford, and is now being adopted by other cities and towns.

A panoramic view of the city, its streets, parks, public buildings, private residences, industries, and places of business are given in the following pages. We invite the reader to an inspection.

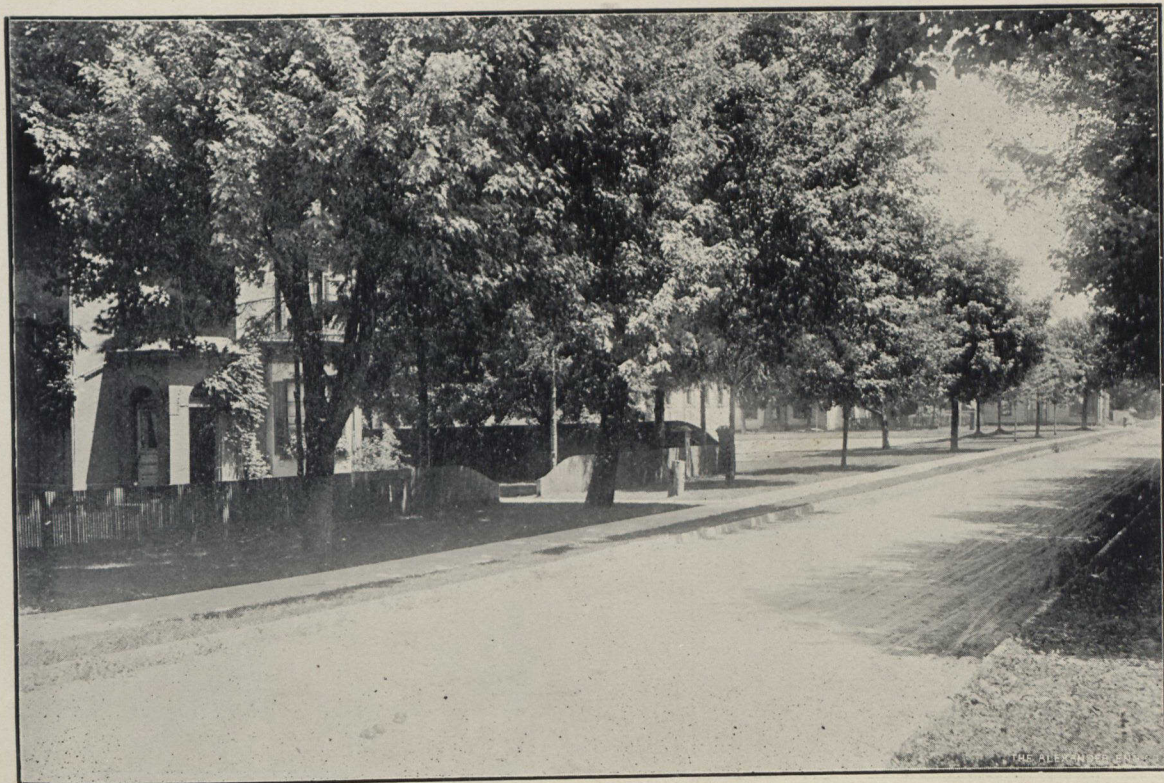


BIRD'S-EYE VIEW FROM COLLEGIATE INSTITUTE



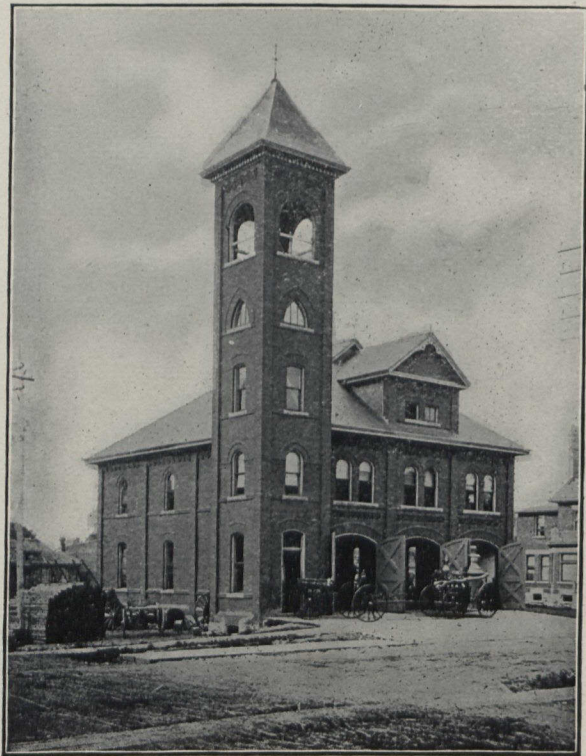


VIEW ON CHURCH STREET



GRANGE STREET AND ITS FINE ROADWAY

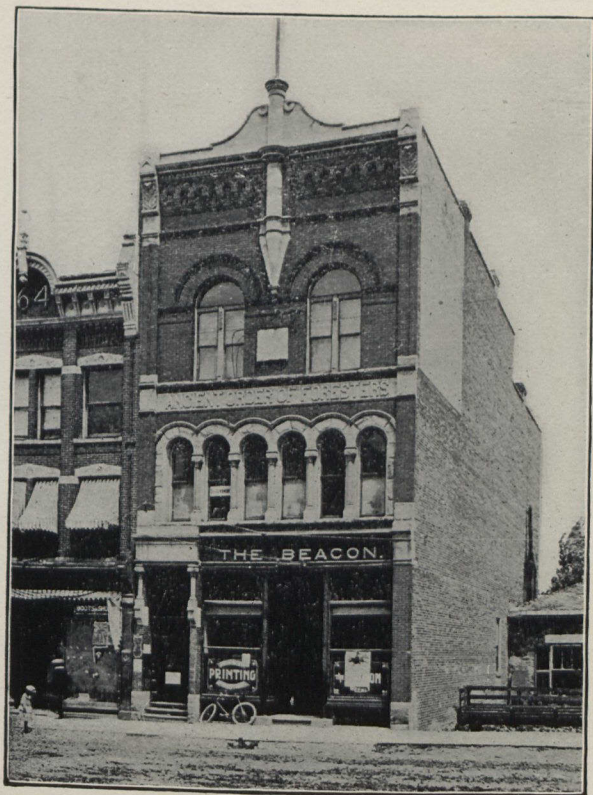




FIRE HALL



POST OFFICE



BEACON OFFICE AND A. O. F. HALL



ODDFELLOWS' BLOCK





A PRETTY VIEW ON ST. DAVID STREET.



CHURCH ST. HAS HANDSOME RESIDENCES



CITY HALL, STRATFORD





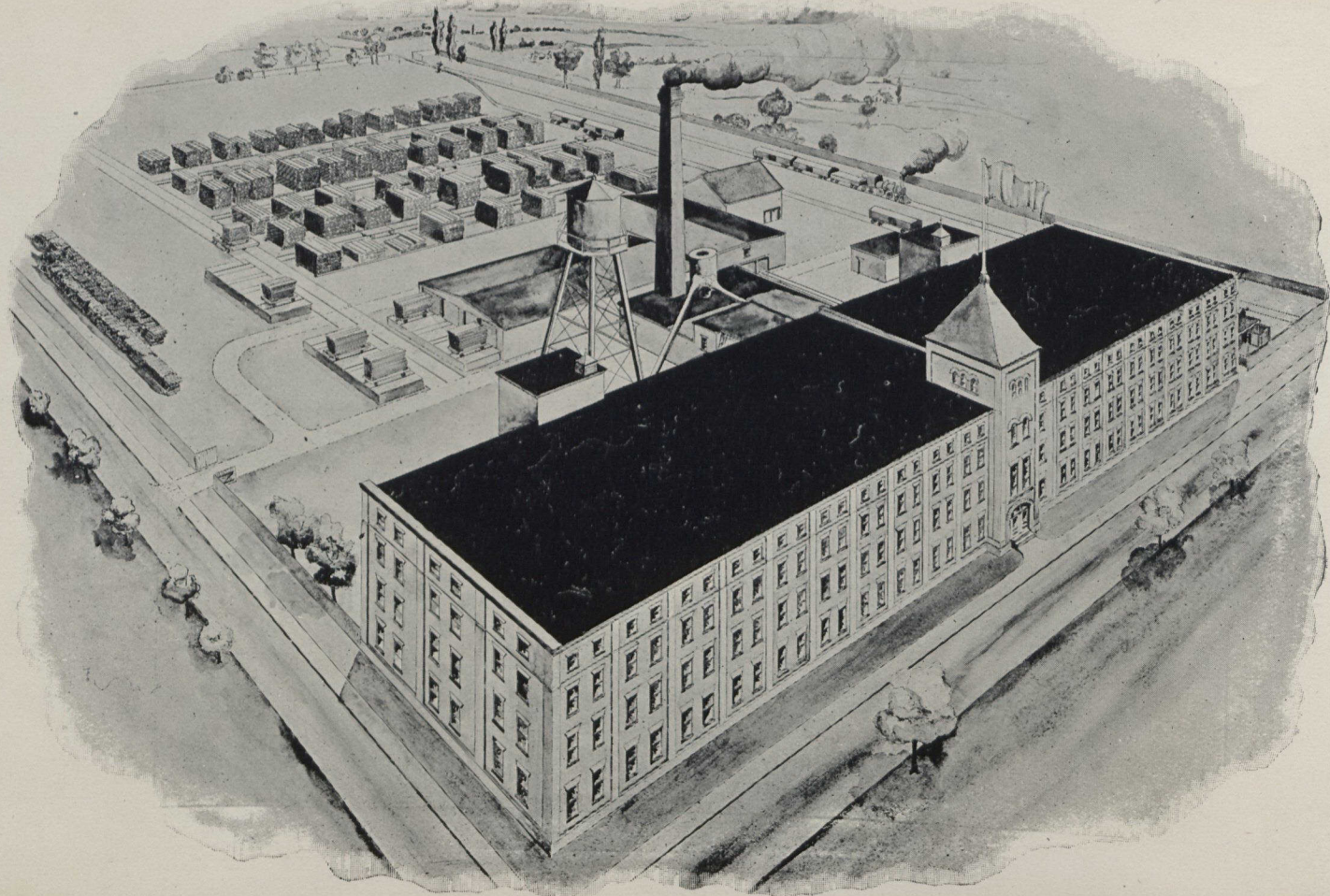
LOOKING DOWN ONTARIO STREET

THE ALEXANDER EN.



WESTERLY VIEW DOWN ONTARIO STREET





FACTORY OF THE GEORGE M'LAGAN FURNITURE CO., LIMITED.



A GLIMPSE OF WELLINGTON STREET



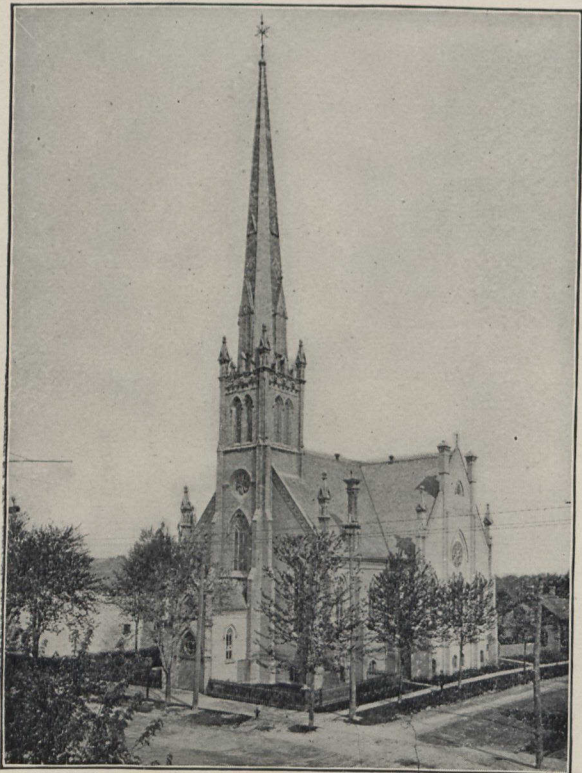


A VIEW UP MARKET STREET



A LABOR DAY DEMONSTRATION

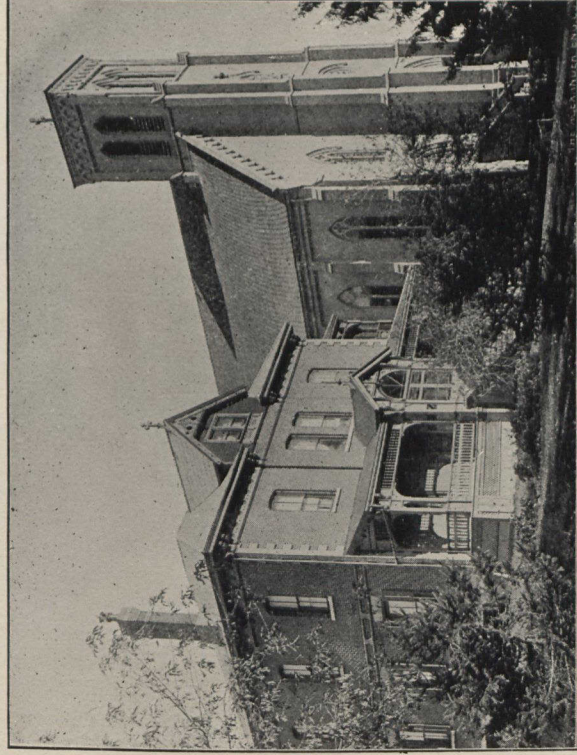




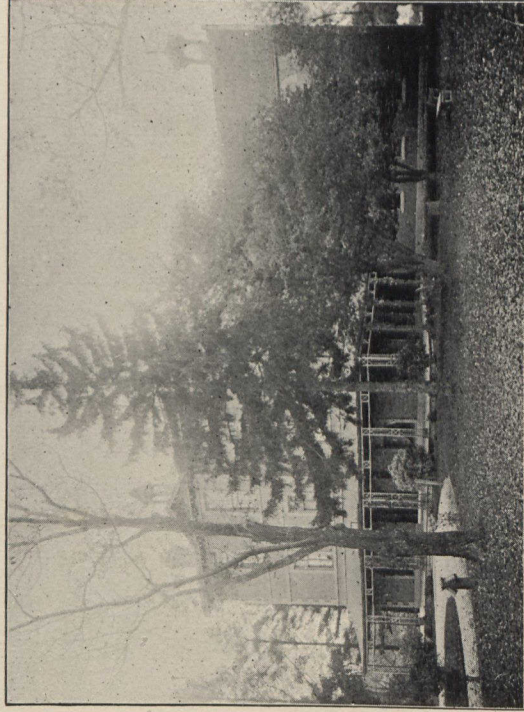
KNOX CHURCH (PRESBYTERIAN)



HERALD BUILDING AND Y. M. C. A.

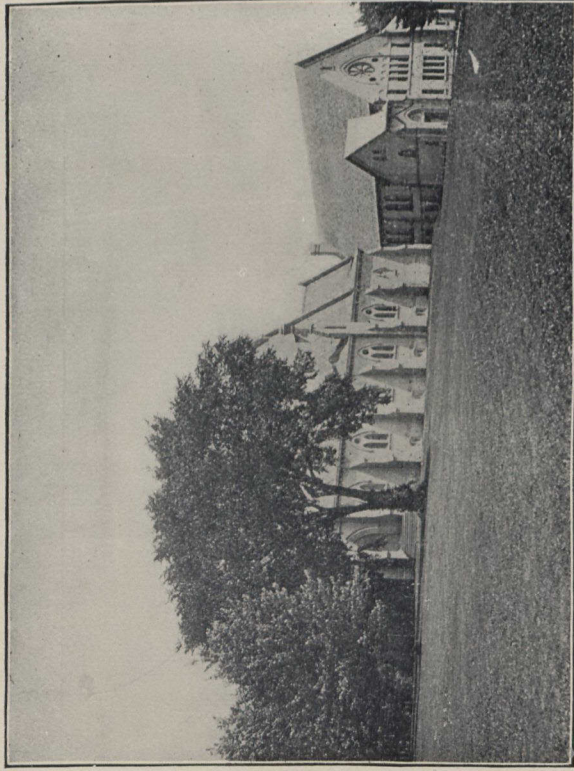


ST. JOSEPH'S CHURCH AND RESIDENCE OF REV. DR. KILROY.

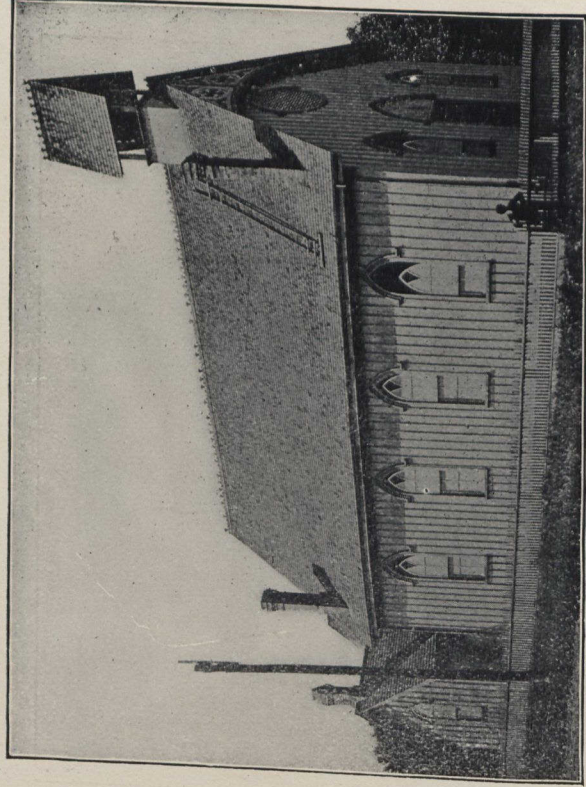


LORETTO CONVENT.

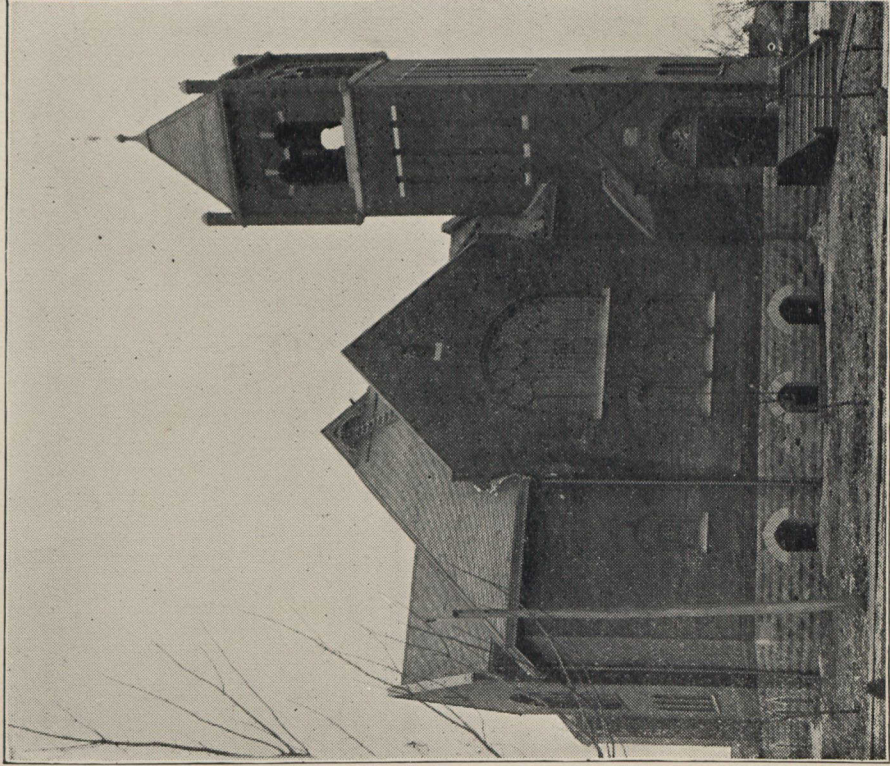




ST. JAMES' CHURCH (CHURCH OF ENGLAND)

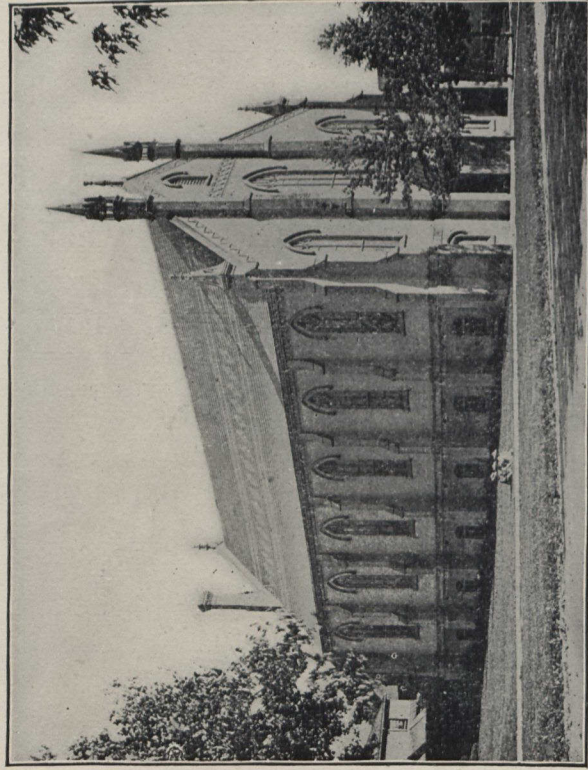


HOME MEMORIAL CHURCH (CHURCH OF ENGLAND)

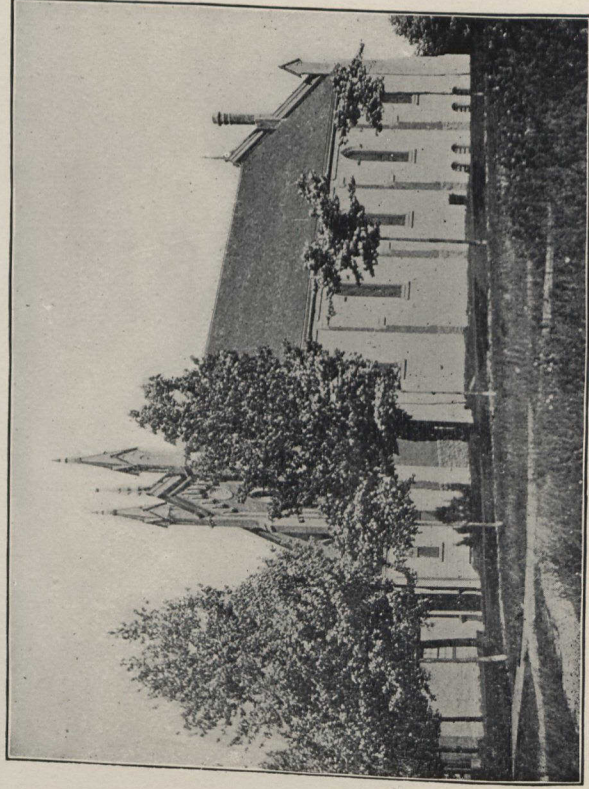


CENTENNIAL CHURCH (EVANGELICAL)

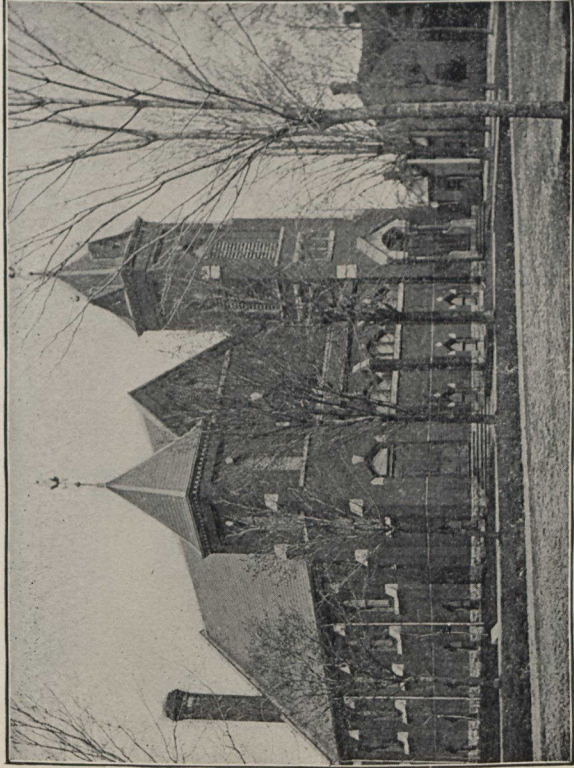




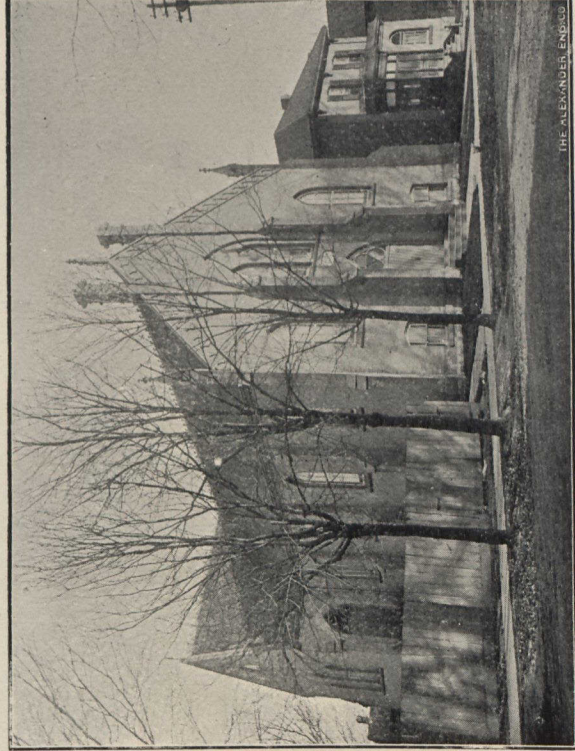
CENTRAL METHODIST CHURCH



ST. ANDREW'S CHURCH (PRESBYTERIAN)



BAPTIST CHURCH



THE ALEXANDER ENDS

WATERLOO ST. METHODIST CHURCH





LUTHERAN CHURCH



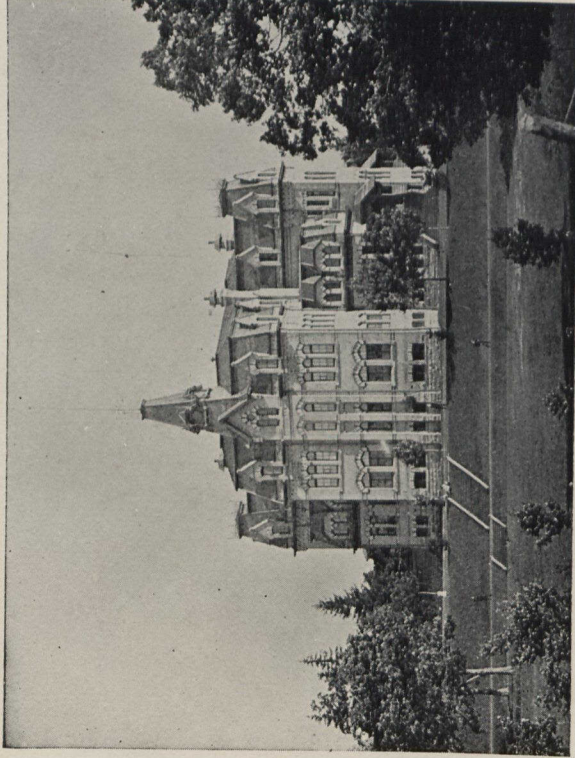
CONGREGATIONAL CHURCH

THE ALEXANDER EN. CO.

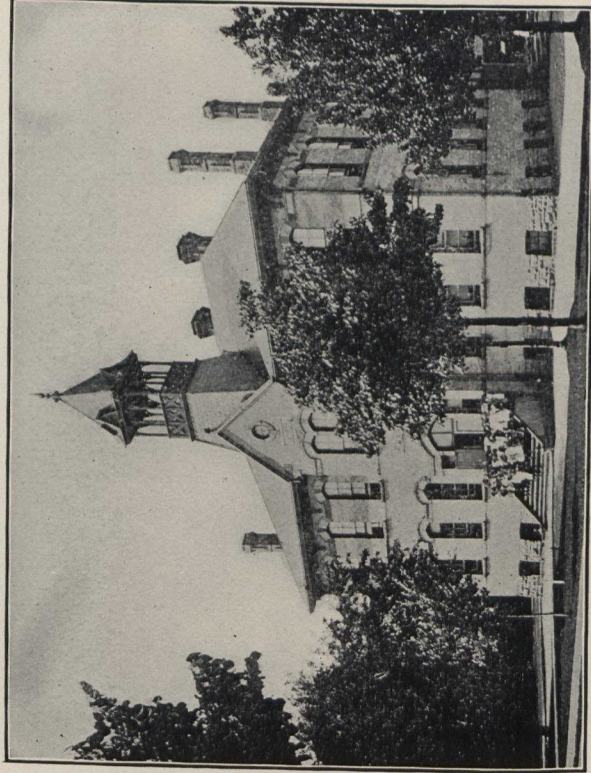


VIEW FROM CITY HALL

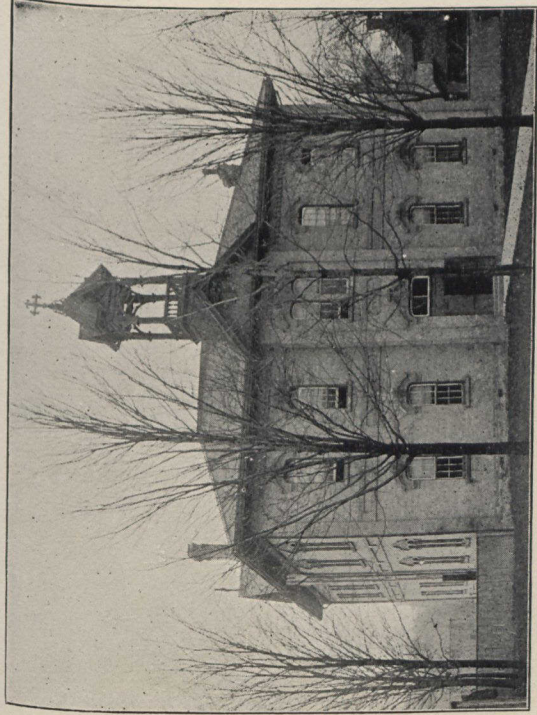




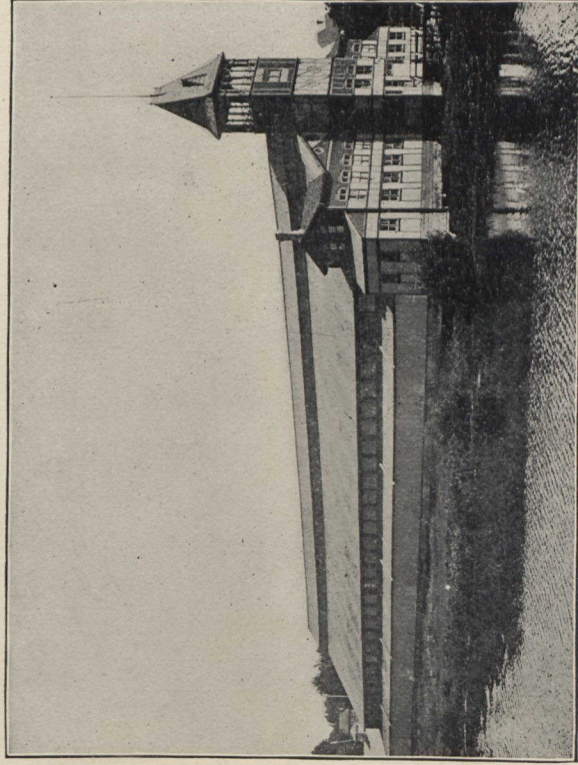
COLLEGIATE INSTITUTE



ROMEO WARD PUBLIC SCHOOL

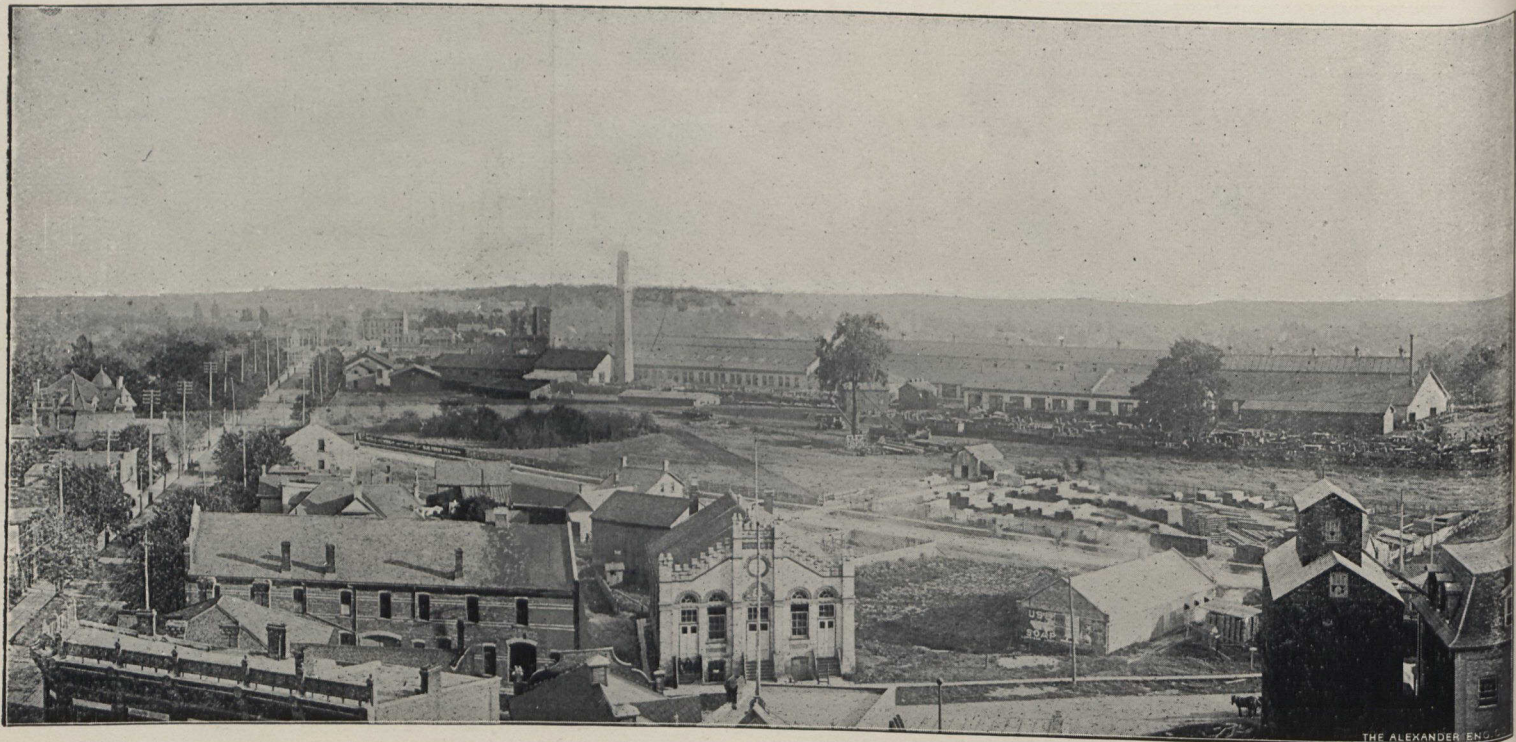


SEPARATE SCHOOL



STRATFORD RINK





THE ALEXANDER EN.

VIEW SOUTH-EAST FROM CITY HALL TOWER—G. T. R. SHOPS IN BACKGROUND



A CLOSER VIEW OF G. T. R. SHOPS





COURT HOUSE



CITY HOSPITAL





HOUSE OF REFUGE



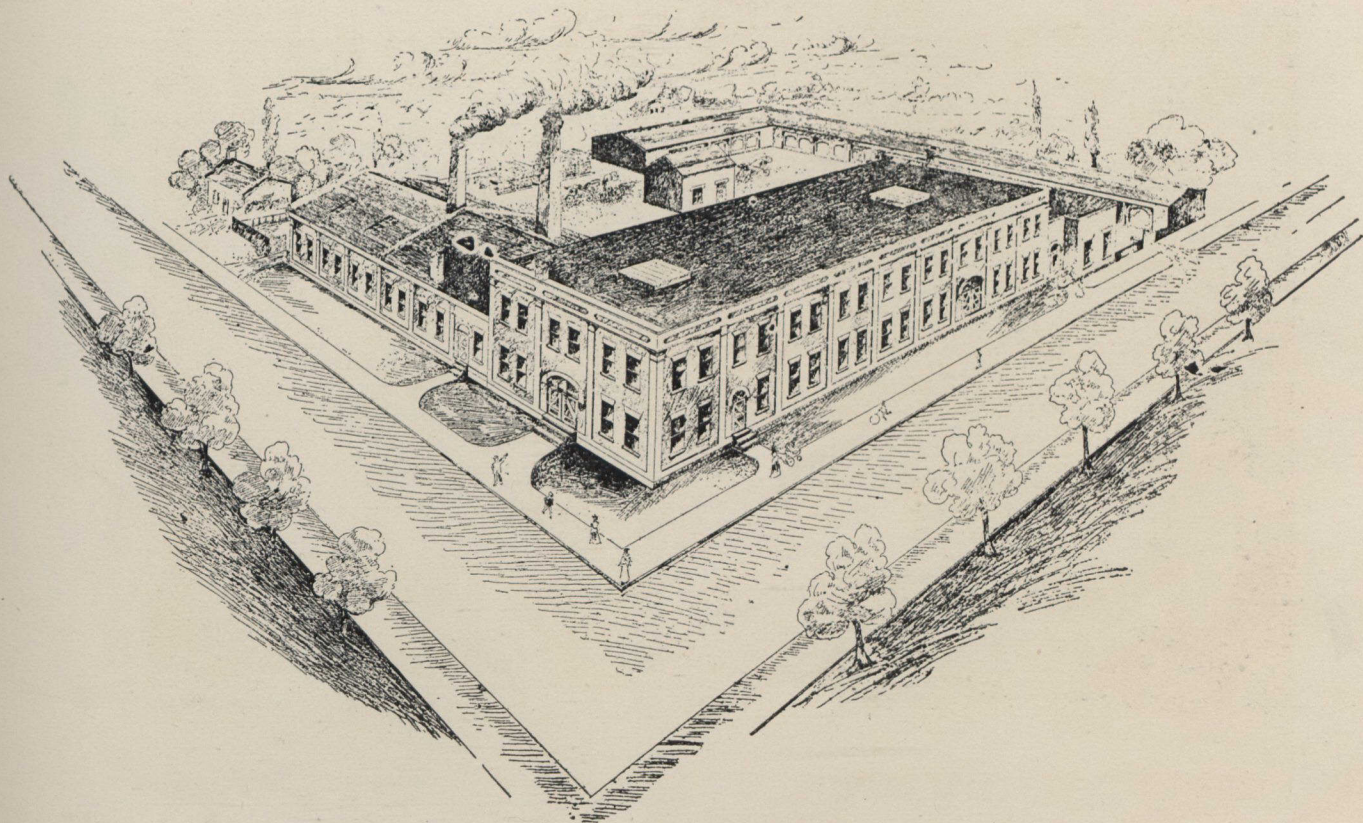
AN EARLY MORNING VIEW ON DOWNIE STREET





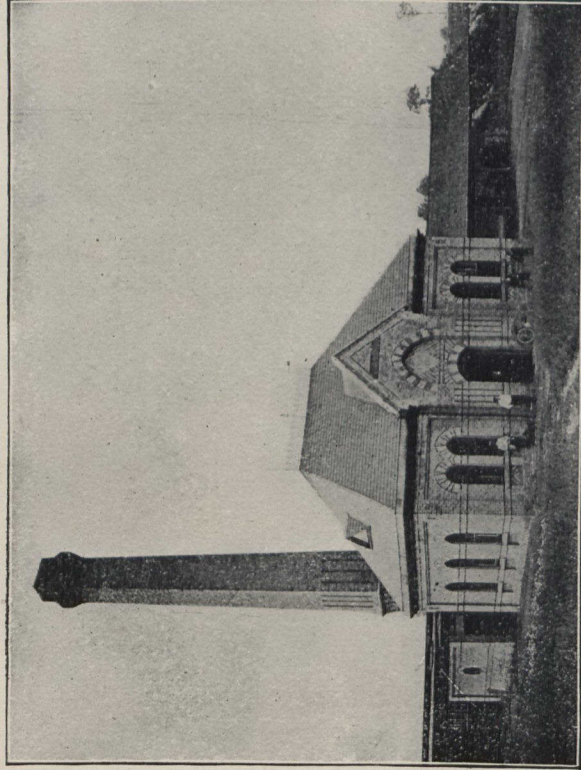
STRATFORD FIRE BRIGADE, 1902

Standing, from Left—John Hudson, Jas. Vanstone, Samuel Guy, Peter Zehr, Jos. Turner, Jos. Bullock, Hugh Durkin (Foreman)  
Second Row—John Hepburn, Jos. Myers, R. H. Myers (Chief), Wm. Wazell, Frank Taylor  
Bottom Row—Clove Myers, Robt. Roberts, Andrew Gibson, Arthur Hammer

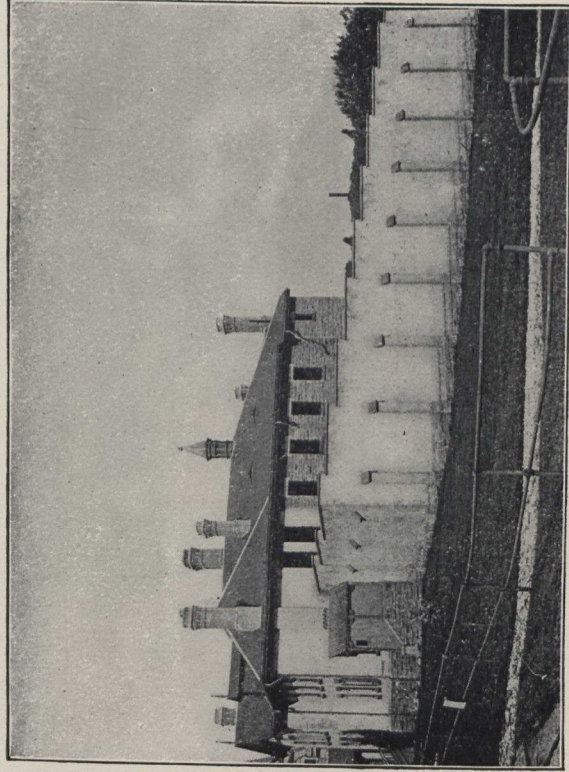


THE MACDONALD MANUFACTURING COMPANY'S THRESHING MACHINE WORKS

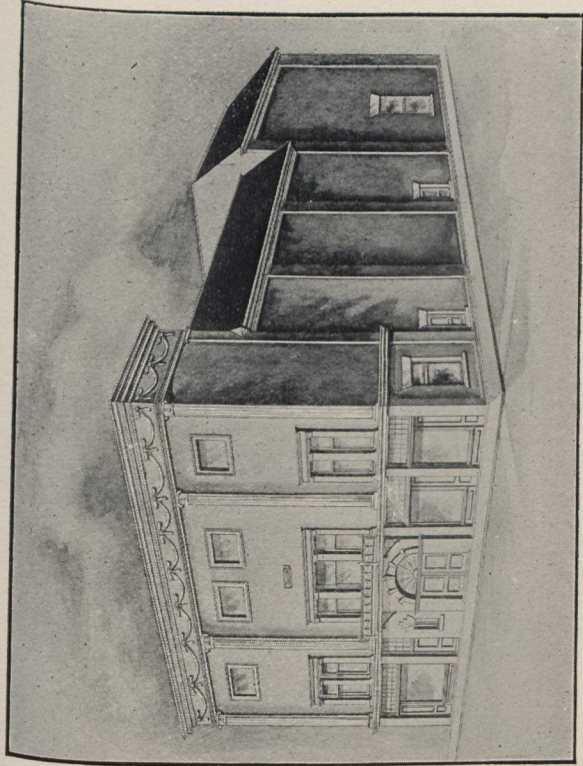




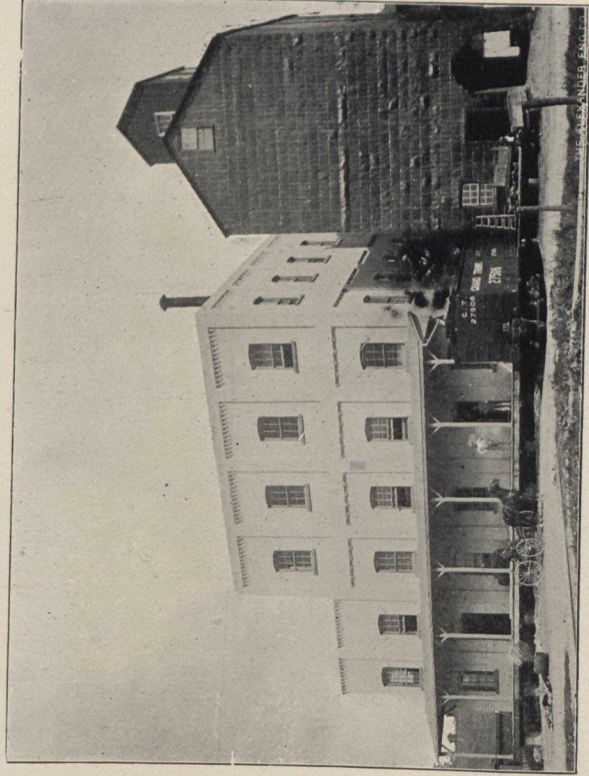
WATERWORKS



COUNTY GAOL

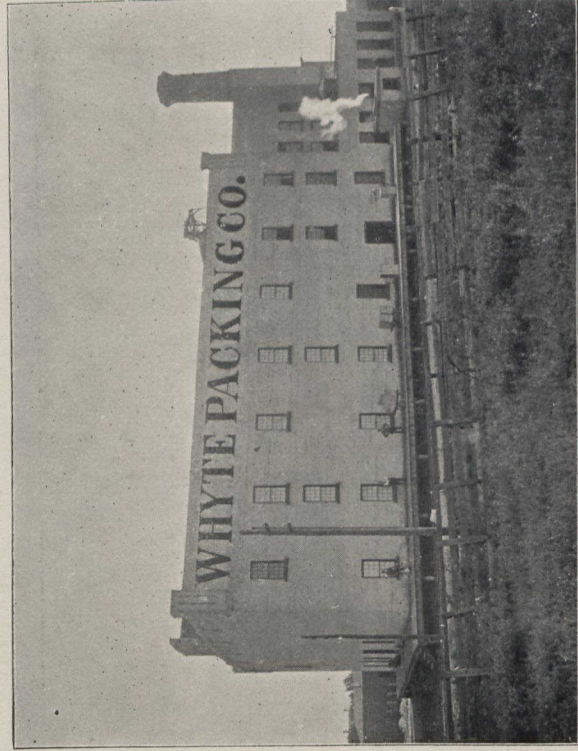


THEATRE ALBERT

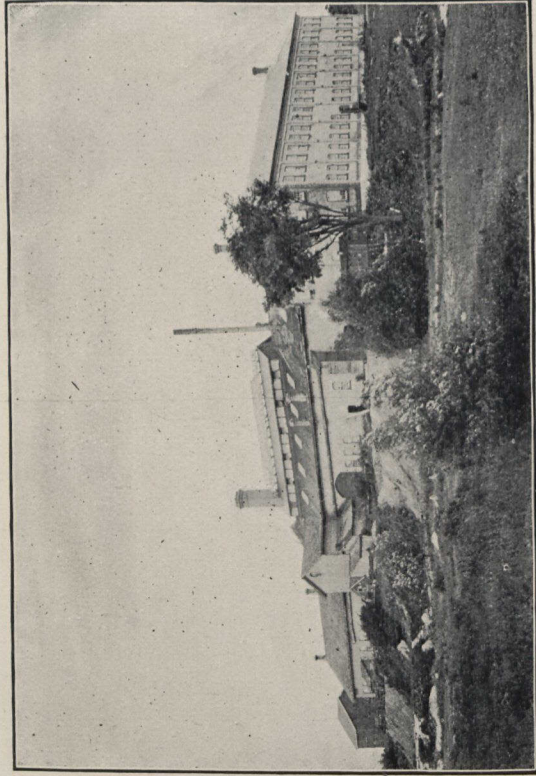


CLASSIC CITY FLOUR MILLS

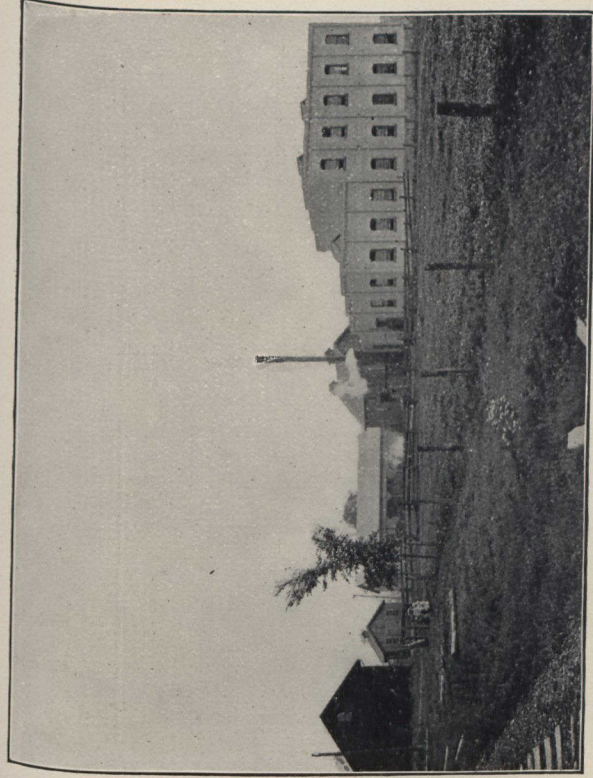




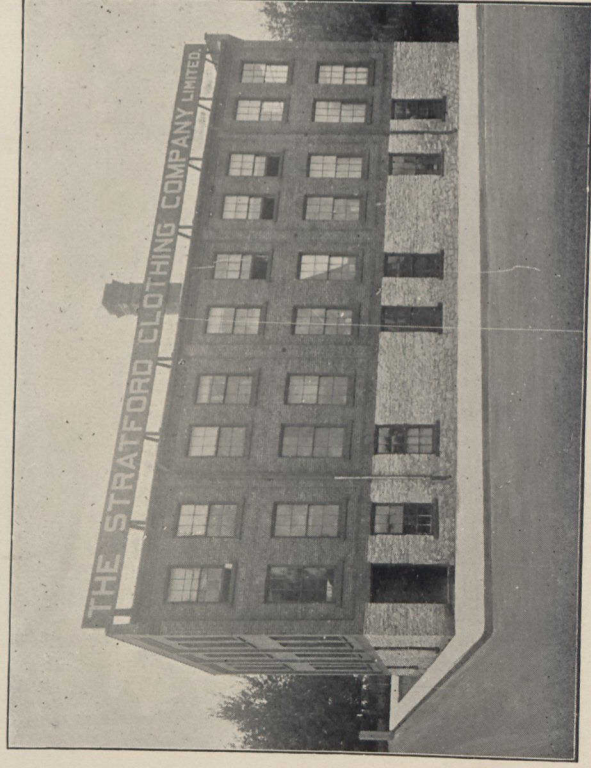
THE WHYTE PACKING CO.



STRATFORD MILL BUILDING CO.

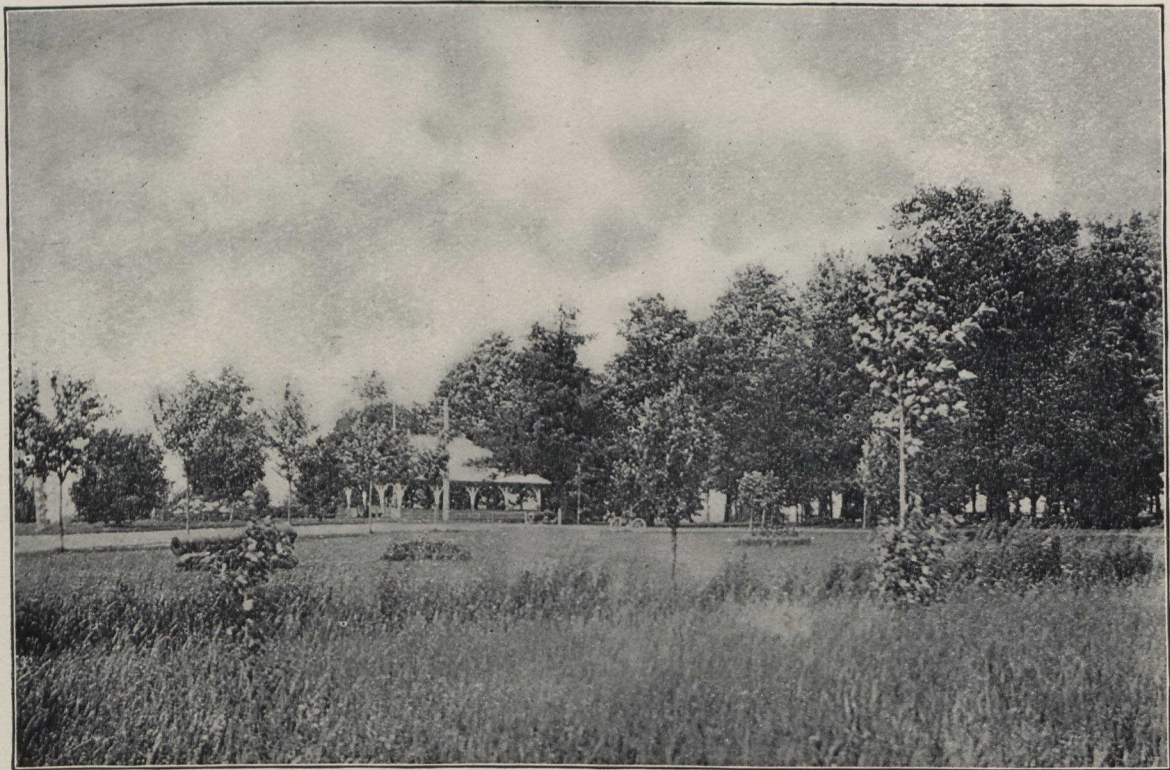


PERTH FLAX AND CORDAGE FACTORY

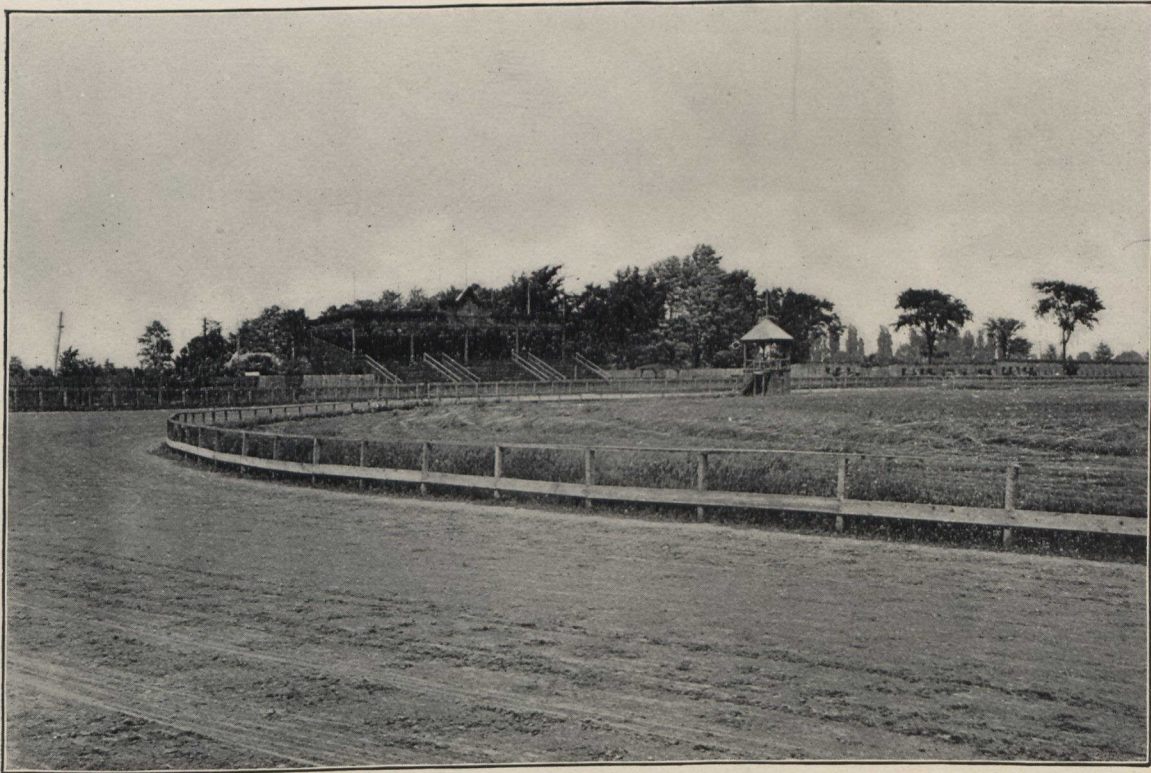


STRATFORD CLOTHING CO.'S FACTORY—REAR VIEW FROM LAKE



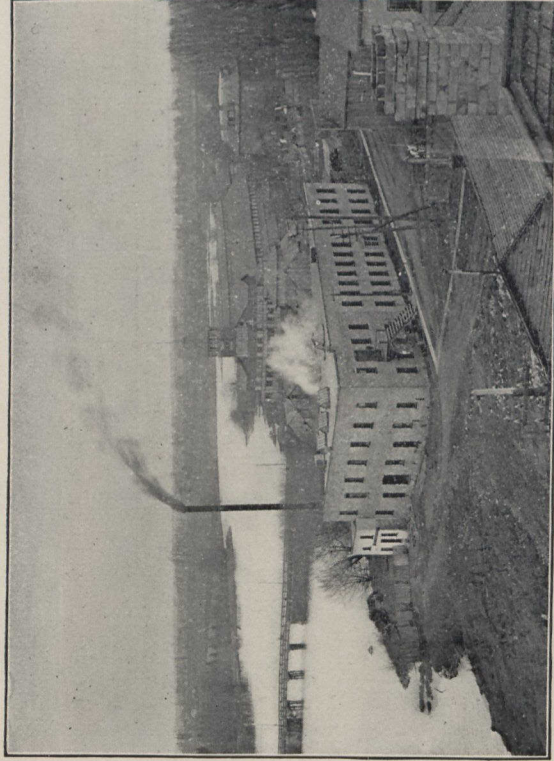


VIEW OF QUEEN'S PARK

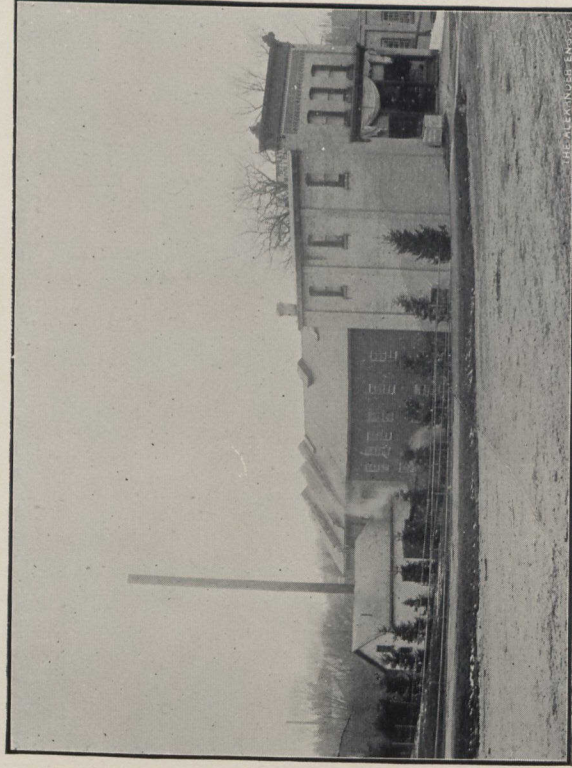


ATHLETIC PARK

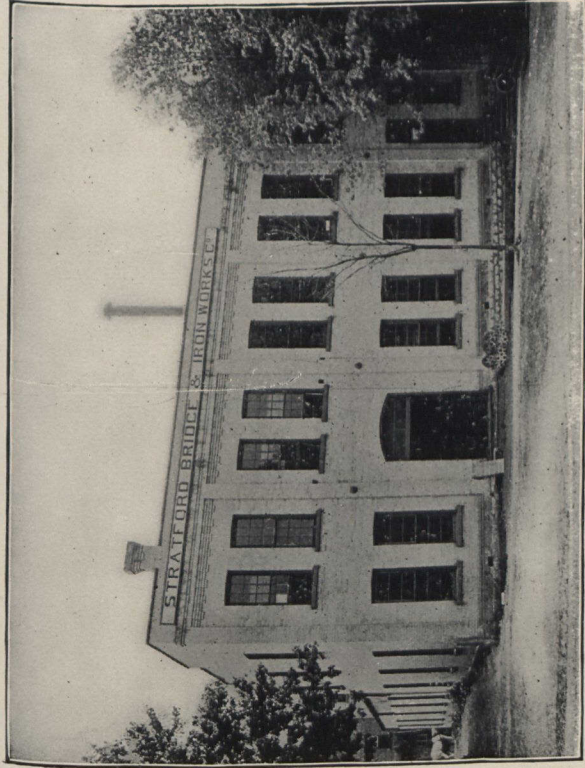




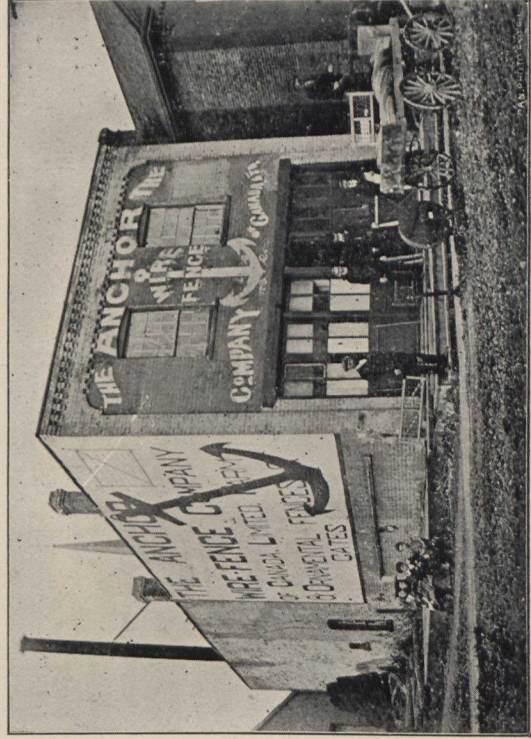
CANADA FURNITURE MANUFACTURERS' FACTORY



DUFYON & SONS' WOOLLEN MILLS

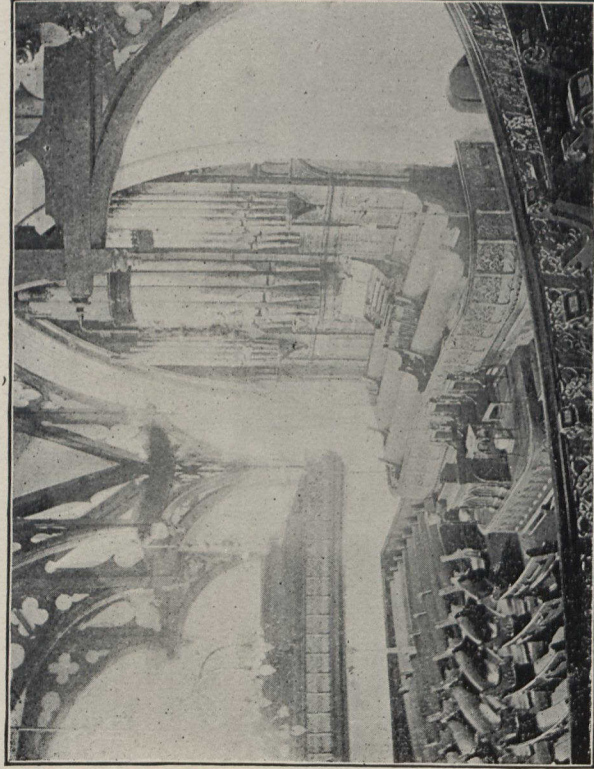


STRATFORD BRIDGE AND IRON WORKS

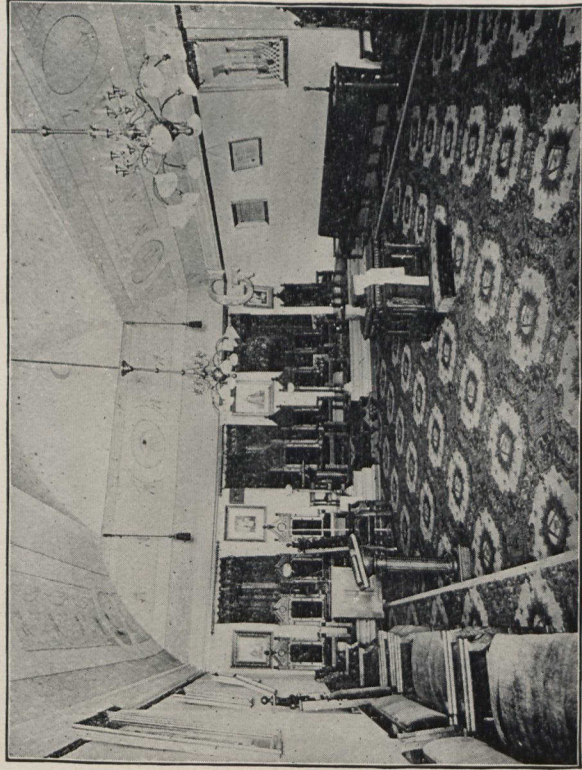


ESPLEN, FRAME & CO, S FACTORY

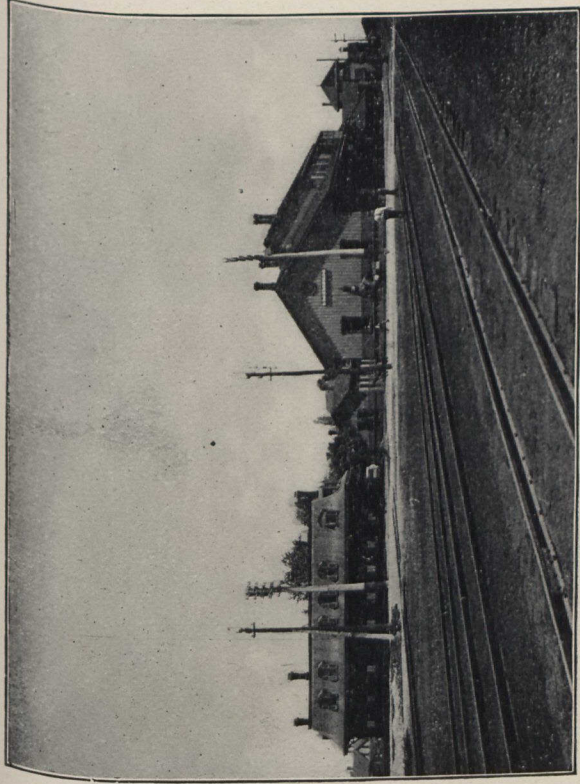




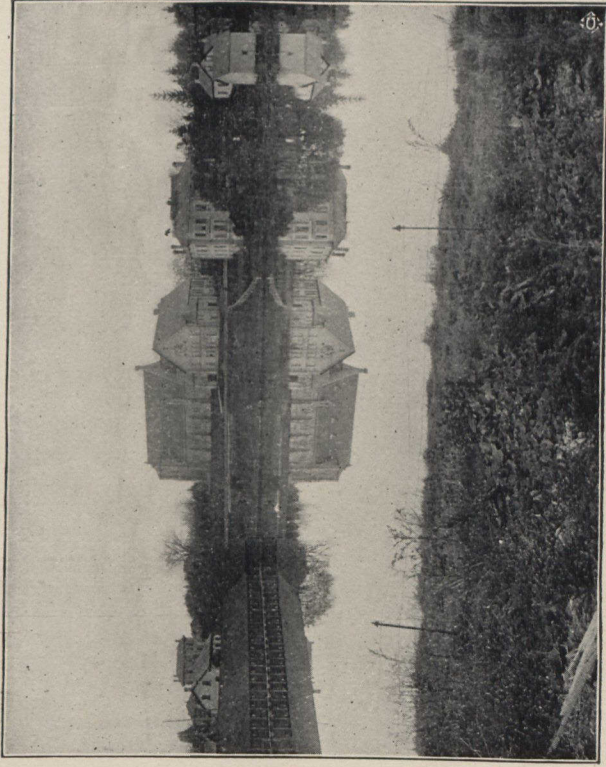
INTERIOR KNOX CHURCH



INTERIOR MASONIC HALL

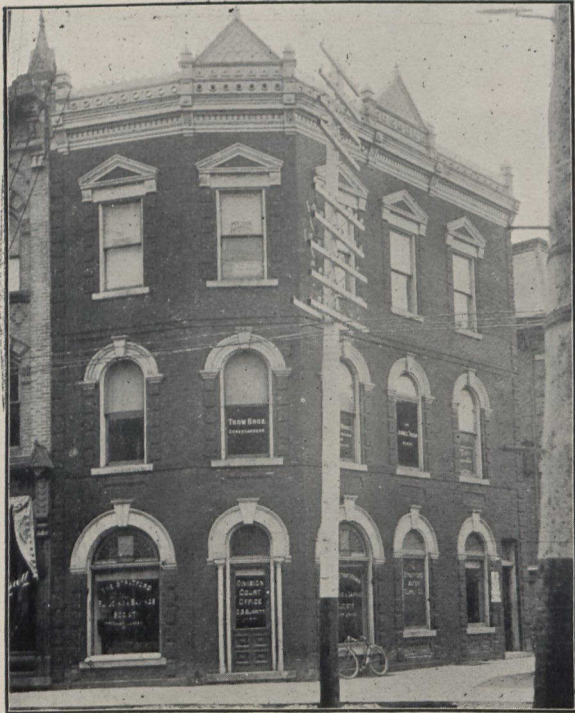


G. T. R. STATION



SCENE ON VICTORIA LAKE





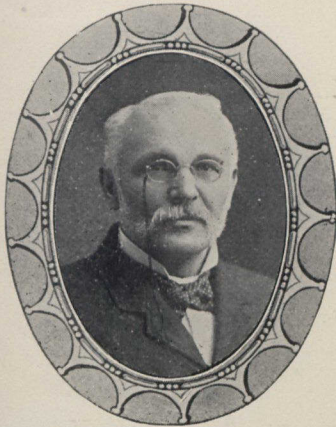
TROW BLOCK  
STRATFORD BUILDING AND SAVINGS SOCIETY



HEAD OFFICE— PERTH MUTUAL FIRE INSURANCE CO.

**The Perth Mutual Fire  
Insurance Co.**

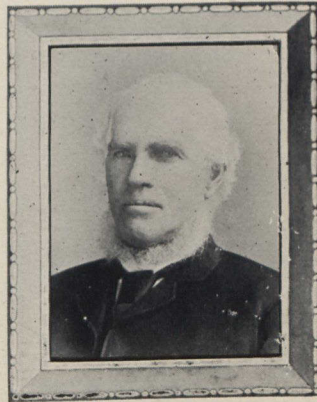
**Incorporated 1861**



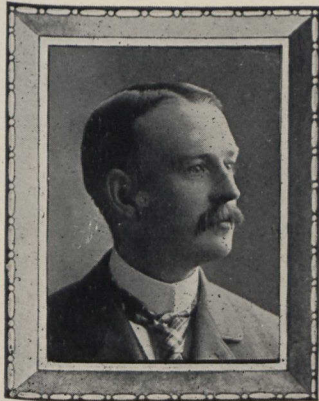
CHAS. PACKERT, Manager.



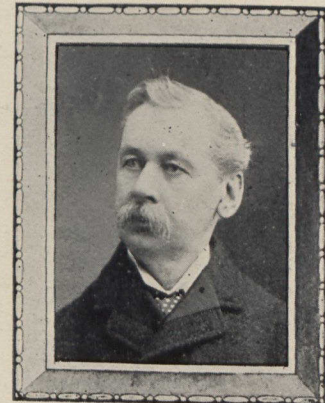
HON. THOS. BALLANTYNE, Vice-Pres.



WM. DAVIDSON, President.



GEO. KAY, Secretary.



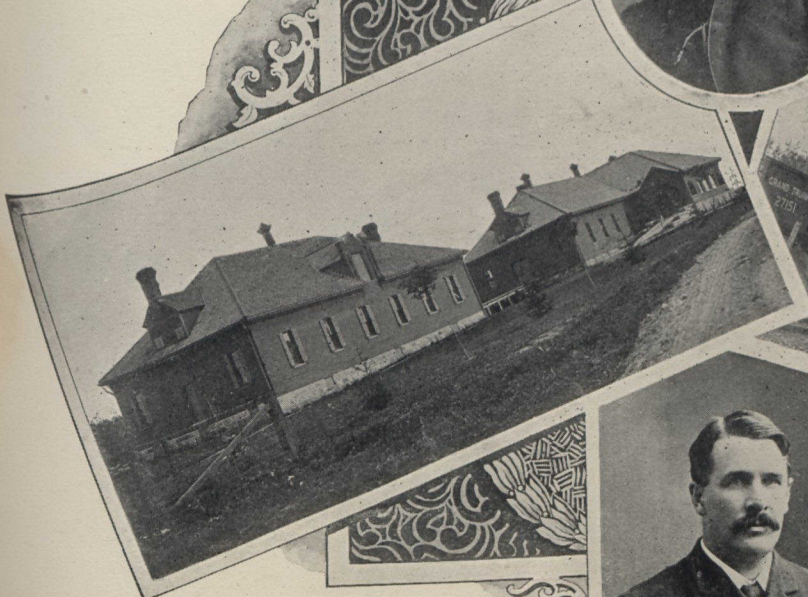
A. CARMAN, Inspector

ITS RECORD ATTESTS ITS WORTH

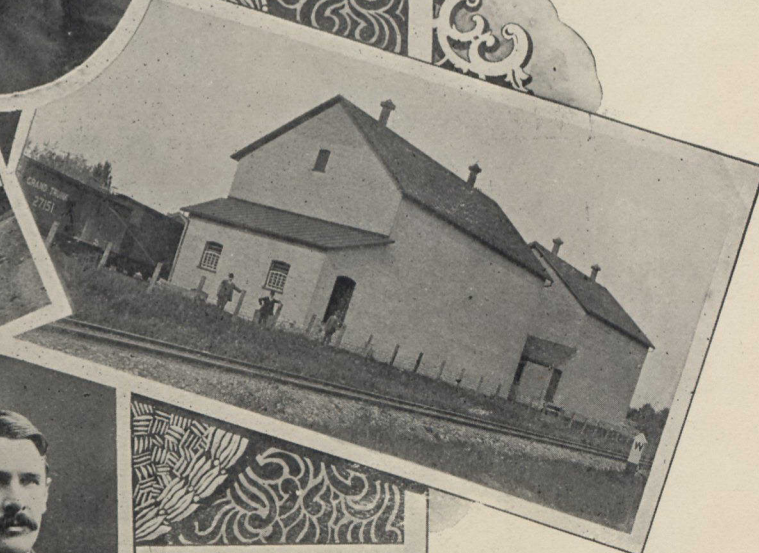




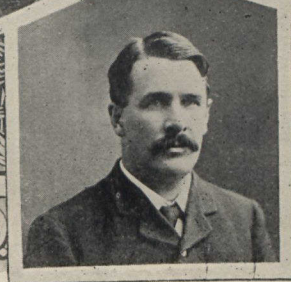
AVONDALE CEMETERY



Black Creek Cheese and Butter Factory



The Stratford Cold Storage Warehouses



HON. THOS. BALLANTYNE  
THOS. BALLANTYNE, JR.

THOMAS BALLANTYNE & SONS—CHEESE AND BUTTER EXPORTERS



## Stratford Clergymen



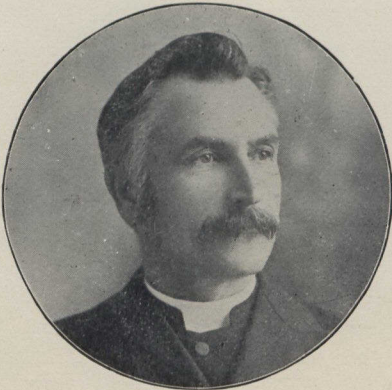
Rev. M. L. LETTCH (Knox)



Rev. E. B. KILROY, D. D. (St. Joseph's)



Rev. D. WILLIAMS, M. A. (St. James')



Rev. E. N. BAKER, M. A., B. D. (Central Meth.)



Rev. W. J. MCKAY, B. A., B. D. (Baptist)



Rev. W. O. HEHN (Centennial)

Stratford Clergymen - Cont'd



Rev. E. W. PANTON (St. Andrew's)



Rev. D. DEACON, M. A. (Home Memorial)



Rev. A. H. GOING, P. A.. (Waterloo Methodist)



Rev. J. G. SPILMAN (Lutheran)



Rev. G. A. MACKENZIE (Congregational)



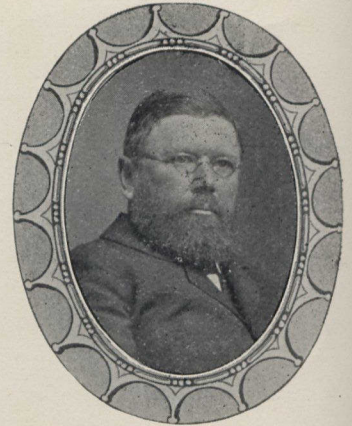
H. M. GILCHRIST, Y. M. C. A. Sec'y



## Some County Officials



J. P. Woods, Ret. Co. Judge



JOHN IDINGTON, K. C.,  
County Crown Attorney



JOHN HOSSIE, Sheriff

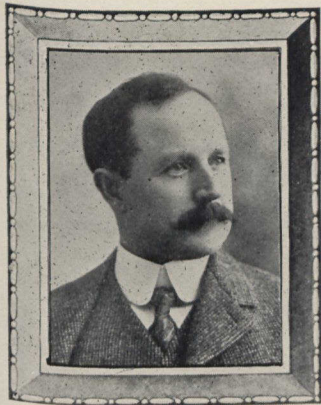


J. A. BARRON, County Judge

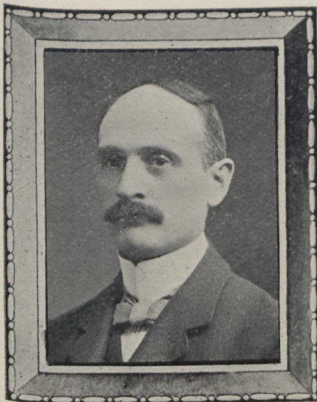


W. C. MOSCRIP, Registrar H. C. J.

## Officers Board of Trade.



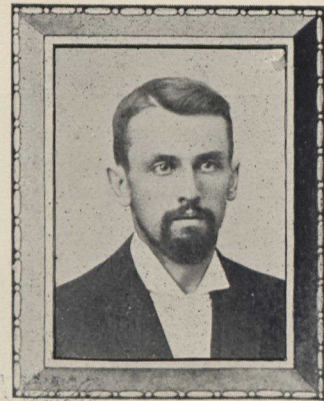
DUNCAN M. FERGUSON, Vice-President  
(Of Duncan Ferguson & Co.)



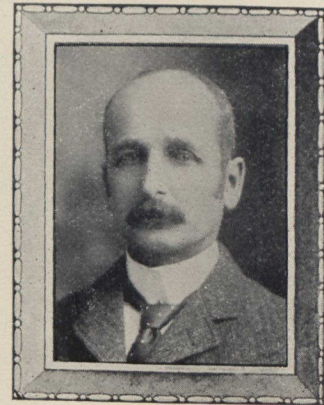
GEO. H. DOUGLAS  
(Of Thornton & Douglas)



GEORGE MCLAGAN, President  
(President and Manager The George McLagan  
Furniture Co., Limited)



JAS. STEELE, Secretary  
(Barrister, Smith & Steele)



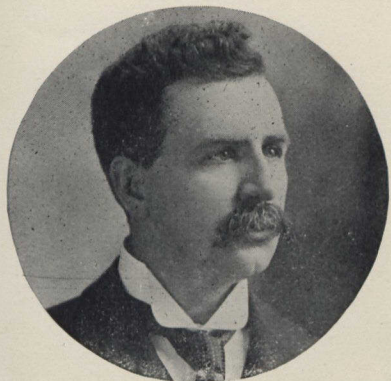
WM. MAYNARD, Treasurer  
(Manager Bank of Commerce)



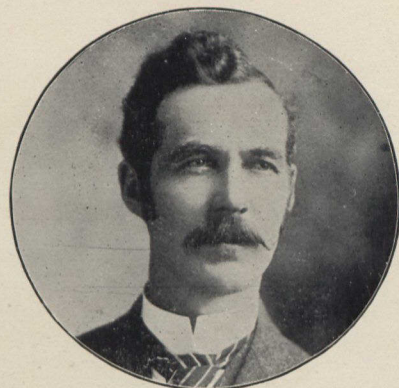


COLLEGIATE INSTITUTE

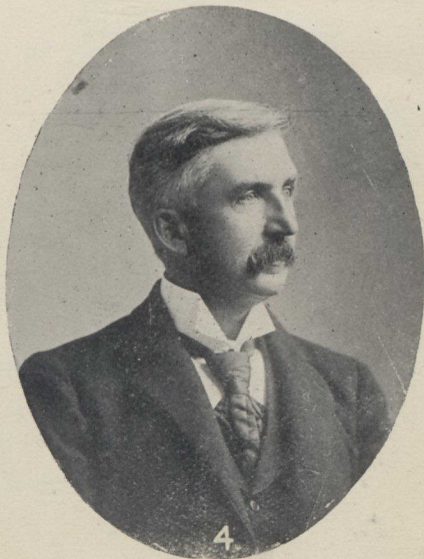
MANUAL TRAINING AND DOMESTIC SCIENCE BUILDING



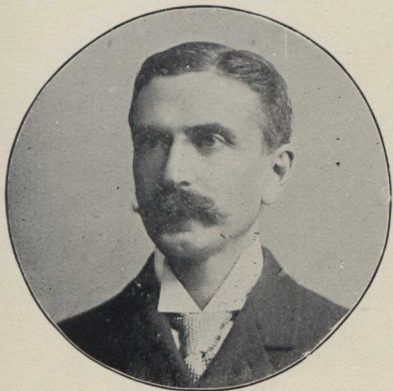
J. RUSSELL STUART  
Inspector City Public Schools



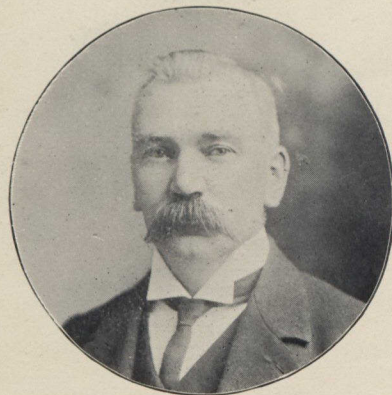
WM. IRWIN  
Inspector County Schools



C. A. MAYBERRY  
Principal Collegiate Institute



E. P. WINSLOW  
Manager Bank of Montreal



C. H. S. COOKE  
Manager Merchants Bank





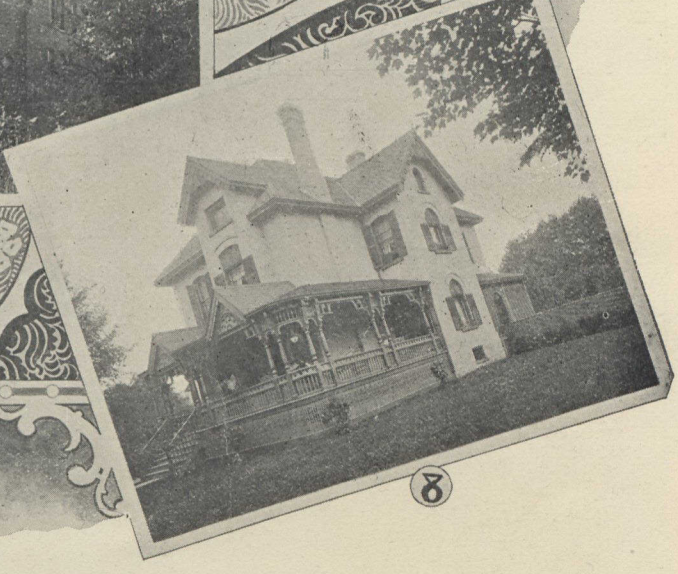
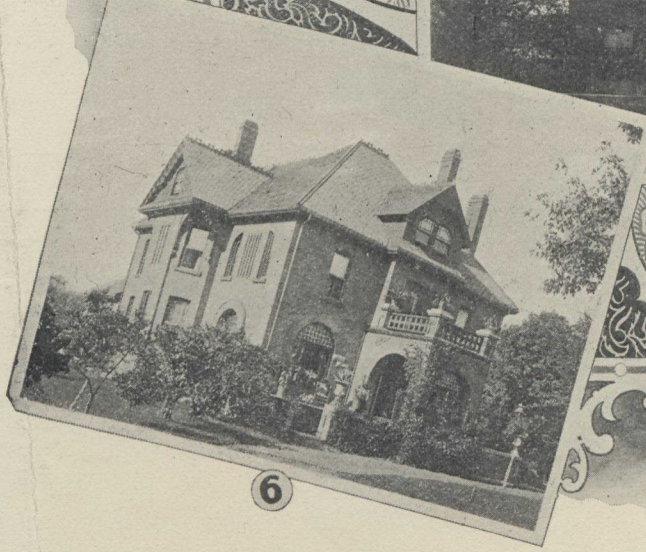
W. J. FERGUSON



THE ARCADE—DRY GOODS DEPARTMENT STORE



# SOME STRATFORD HOMES



(1) J. P. MABEE, K. C.  
 (4) JUDGE BARRON  
 (6) SHERIFF HOSSIE

RESIDENCES OF  
 (3) W. M. O'BEIRNE  
 (7) A. M. PANTON

(2) JOHN BROWN, ex-M.P.P.  
 (5) JAMES PRINGLE, JR.  
 (8) W. J. ELLIOTT





(1) J. A. DUGGAN'S.

(2) WM. DAVIDSON'S.

(3) WM. MAYNARD'S.

(4) THOS. TROW'S.

(5) GEO. H. DOUGLAS'.

(6) E. P. WINSLOW'S.

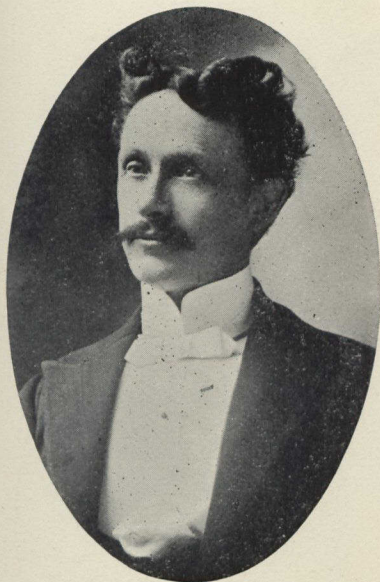


THE UPPER AVON—Residence of J. IDINGTON, K. C, in Background.



“THE ELMS”—Residence of Dr. J. A. ROBERTSON.





J. P. CHISWELL



J. P. CHISWELL'S BEAVER HALL CLOTHING STORE



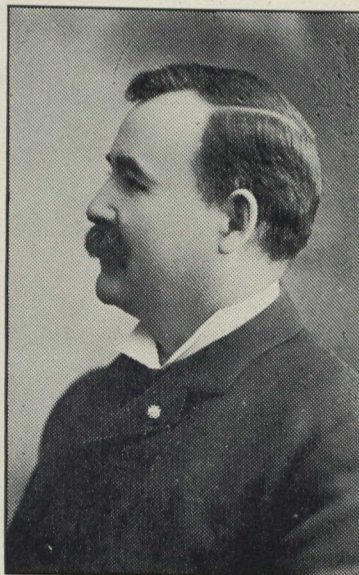
## Representative Citizens



G. G. McPHERSON, K. C.



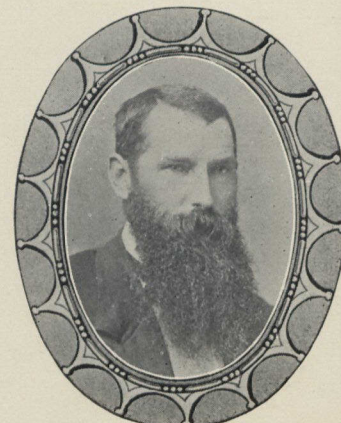
J. P. MABKE, K. C.



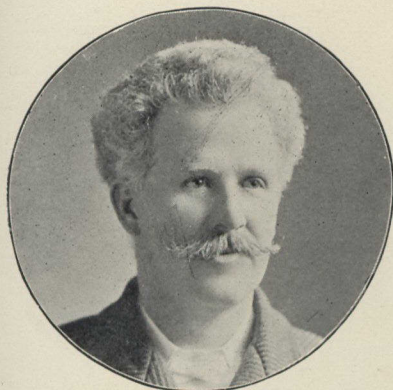
A. F. MACLAREN, M. P.



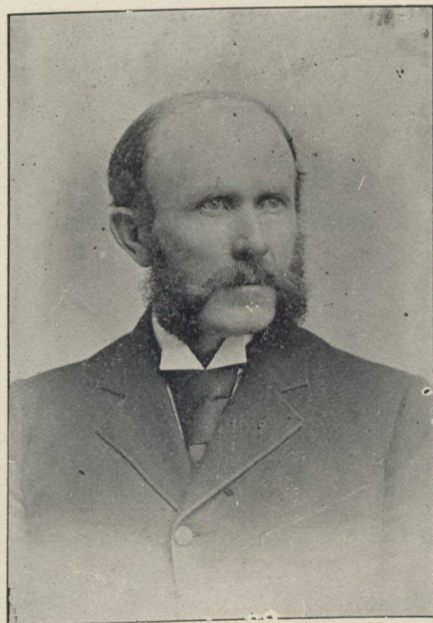
E. SYDNEY-SMITH, K. C.



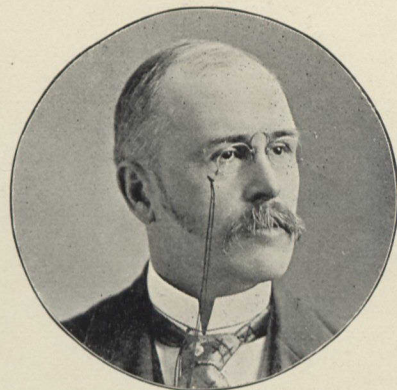
JAS. O'LOANE, Police Magistrate



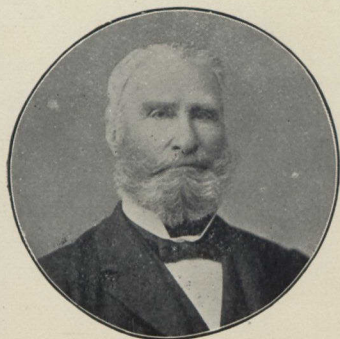
JOHN BROWN, ex-M. P. P.  
Broker and Real Estate



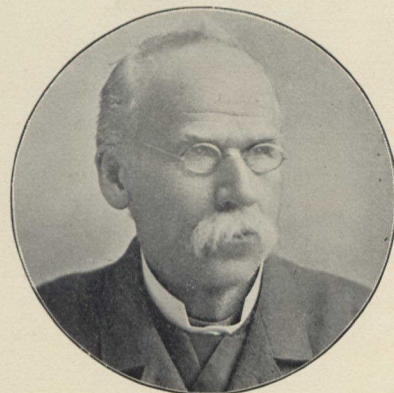
JOHN C. MONTEITH, M. P. P.



W. S. DINGMAN  
Editor The Stratford Herald



P. R. JARVIS, ex-Mayor



J. H. SCHMIDT  
Editor The Kolonist



"FOR FINE SHOES"

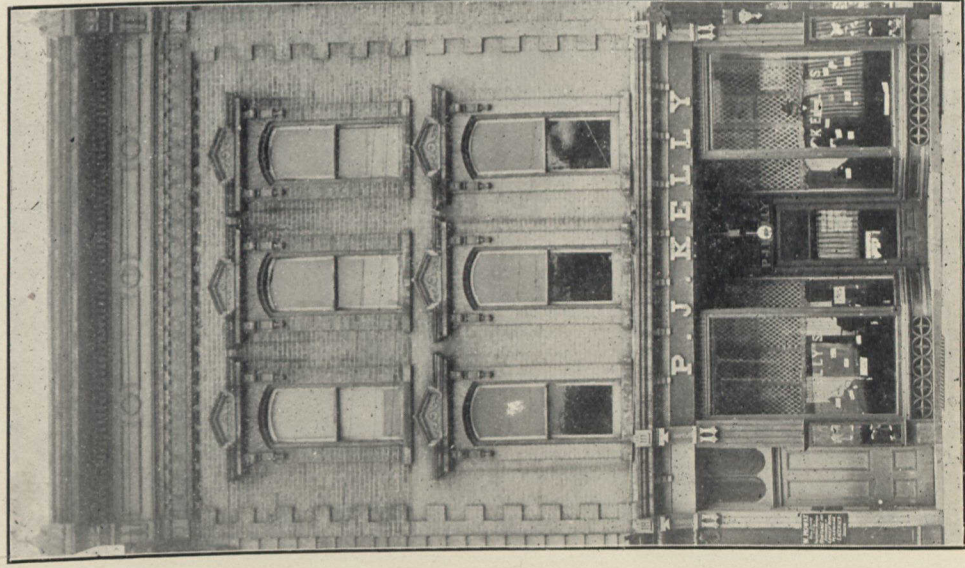


*Approved by J. J. Jones*

*Richard Johnson*

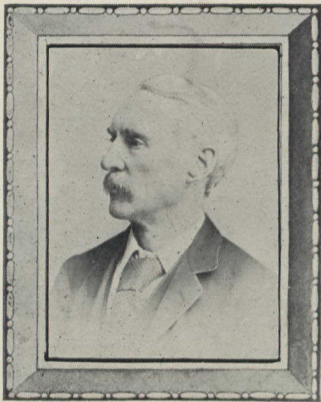


P. J. KELLY

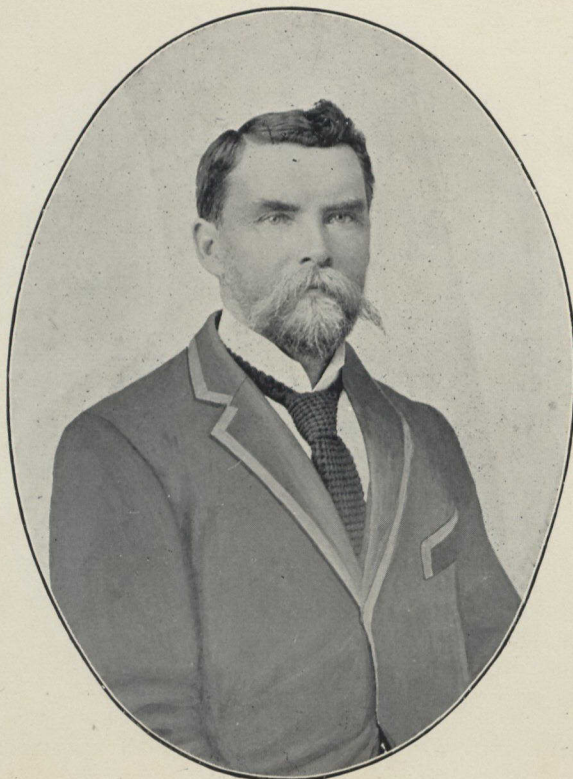


P. J. KELLY'S CLOTHING STORE

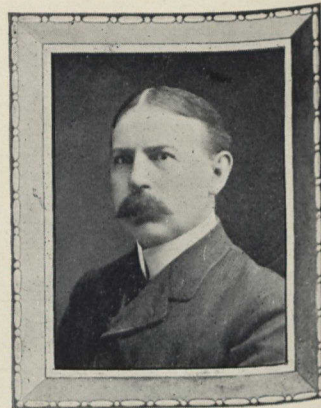




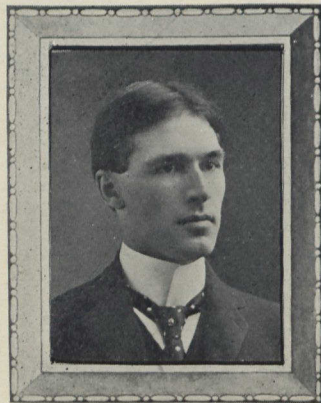
WM. BUCKINGHAM  
Manager British Mortgage Loan Co.



Dr. J. A. ROBERTSON  
Medical Health Officer



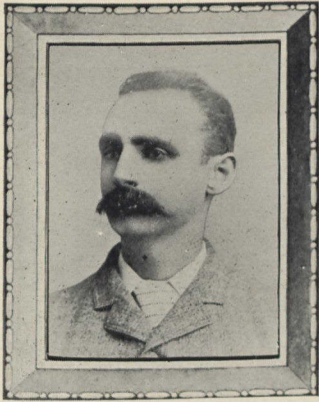
W. M. O'BEIRNE  
Editor The Stratford Beacon



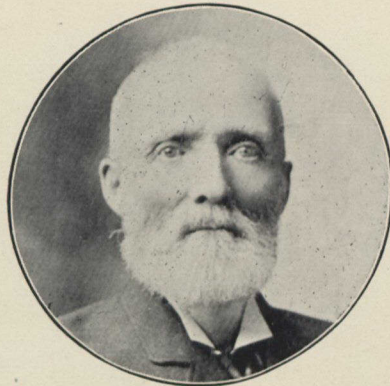
J. C. MAKINS  
Barrister (Mabee & Makins)



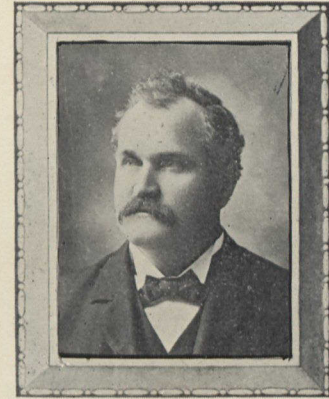
A. M. PANTON  
Barrister



WM. LAWRENCE  
Barrister, City Treasurer



D. D. HAY  
Registrar North Perth



J. A. DAVIDSON  
Barrister (McPherson & Davidson)



FRED. J. COLVIN  
Live Stock Dealer

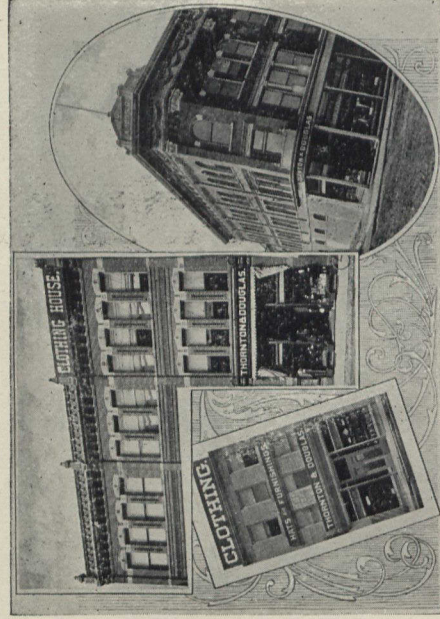


E. T. DUFTON  
Woolen Manufacturer



DR. E. H. EIDT  
Dentist



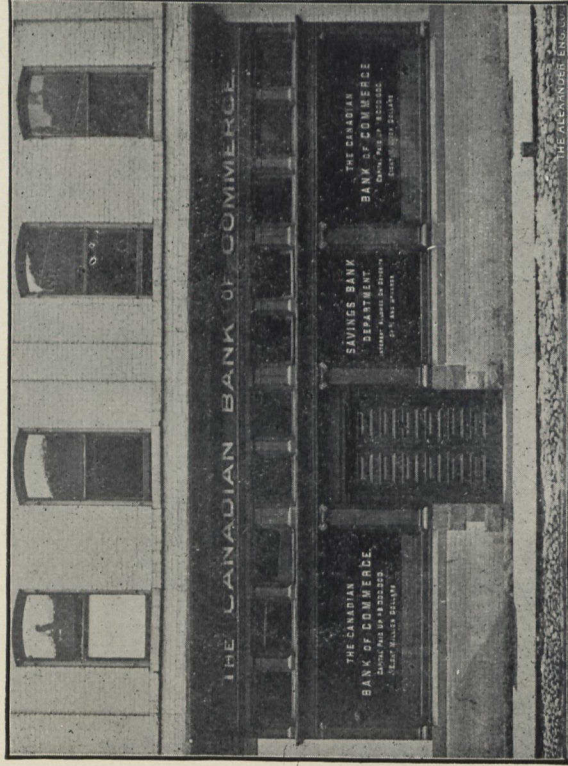


Guelph

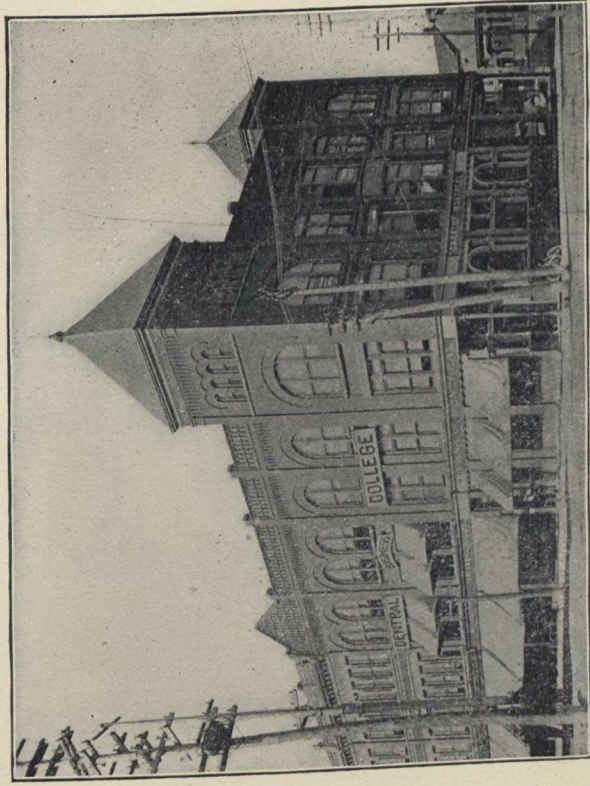
Stratford

Chatham

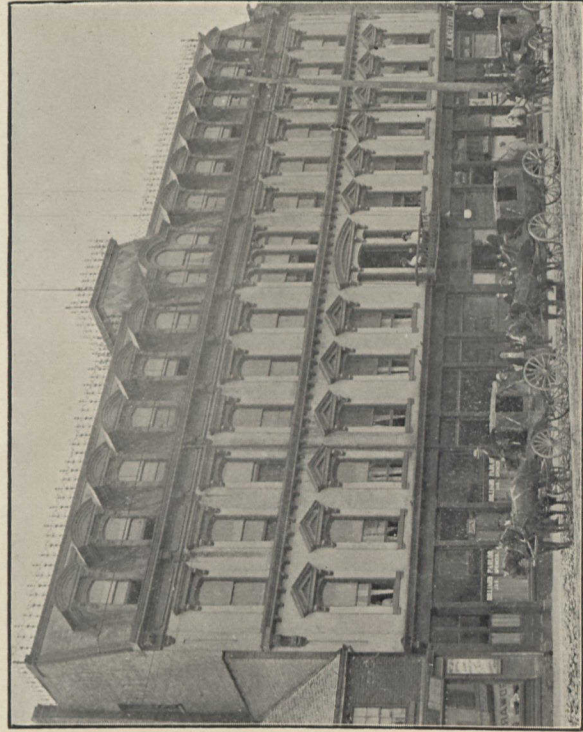
THE THORNTON & DOUGLAS CLOTHING STORES



BRANCH OF THE CANADIAN BANK OF COMMERCE

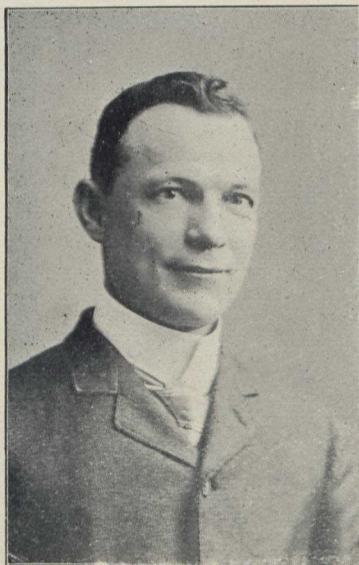


BRANCH OF THE BANK OF MONTREAL



THE ALBION HOTEL—WM. GORDON, PROP.





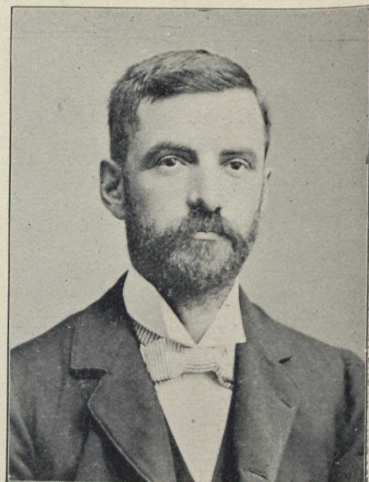
ROBERT PATTERSON  
Mechanical Superintendent G. T. R.



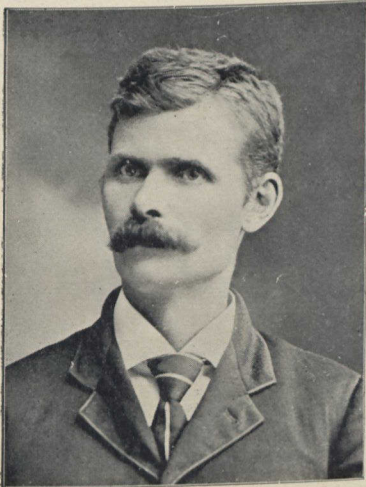
C. E. DEWEY  
District Freight Agent G. T. R.



R. M. CASSELS  
City Passenger Agent G. T. R.



WM. PRESTON  
Proprietor Stratford Mill Building Co.



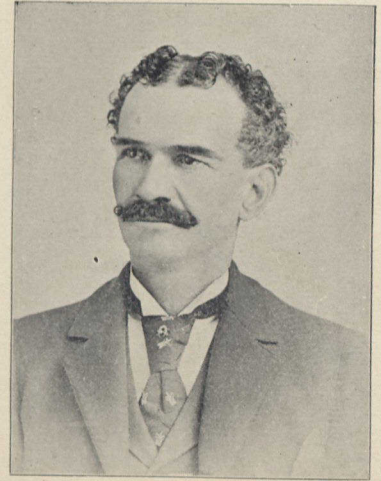
W. J. CLELAND  
Member Public School Board



A. NEAL, Florist



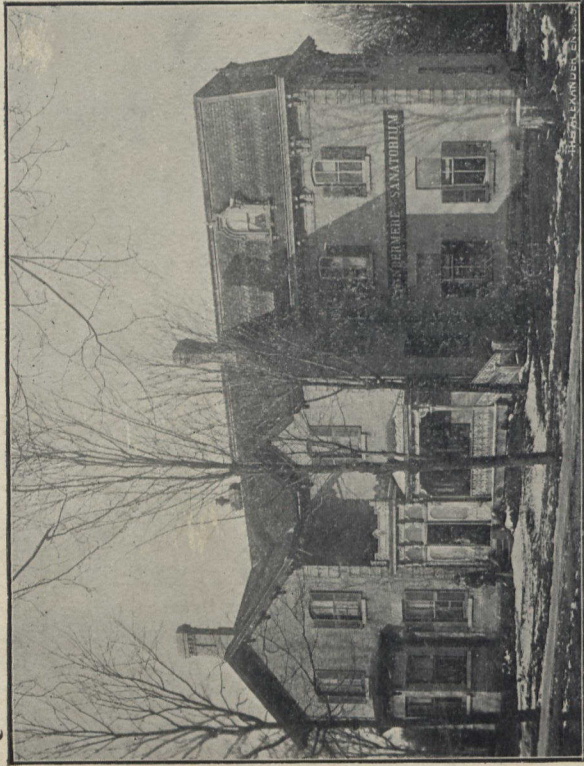
M. J. DILLON, City Hotel  
Treas. Stratford Separate School Board  
Fin. Sec. Branch 13, C. M. B. A.  
Thirty-One Years a Trades Unionist



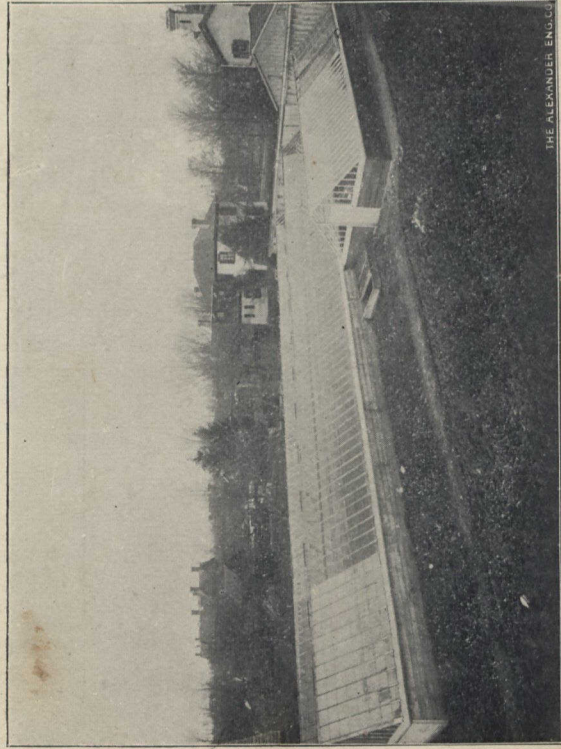
DR. WM. STEELE  
Veterinary Surgeon



FC3099  
S77  
A63 1903



WINDERMERE SANATORIUM



A. NEAL'S GREENHOUSES

THE ALEXANDER ENG. CO.