

**CIHM  
Microfiche  
Series  
(Monographs)**

**ICMH  
Collection de  
microfiches  
(monographies)**



**Canadian Institute for Historical Microreproductions / Institut canadien de microreproductions historiques**

**© 1995**

## Technical and Bibliographic Notes / Notes technique et bibliographiques

The Institute has attempted to obtain the best original copy available for filming. Features of this copy which may be bibliographically unique, which may alter any of the images in the reproduction, or which may significantly change the usual method of filming are checked below.

- Coloured covers /  
Couverture de couleur
- Covers damaged /  
Couverture endommagée
- Covers restored and/or laminated /  
Couverture restaurée et/ou pelliculée
- Cover title missing / Le titre de couverture manque
- Coloured maps / Cartes géographiques en couleur
- Coloured ink (i.e. other than blue or black) /  
Encre de couleur (i.e. autre que bleue ou noire)
- Coloured plates and/or illustrations /  
Planches et/ou illustrations en couleur
- Bound with other material /  
Relié avec d'autres documents
- Only edition available /  
Seule édition disponible
- Tight binding may cause shadows or distortion  
along interior margin / La reliure serrée peut  
causer de l'ombre ou de la distorsion le long de  
la marge intérieure.
- Blank leaves added during restorations may appear  
within the text. Whenever possible, these have  
been omitted from filming / Il se peut que certaines  
pages blanches ajoutées lors d'une restauration  
apparaissent dans le texte, mais, lorsque cela était  
possible, ces pages n'ont pas été filmées.
- Additional comments /  
Commentaires supplémentaires:

L'Institut a microfilmé le meilleur exemplaire qu'il lui a été possible de se procurer. Les détails de cet exemplaire qui sont peut-être uniques du point de vue bibliographique, qui peuvent modifier une image reproduite, ou qui peuvent exiger une modifications dans la méthode normale de filmage sont indiqués ci-dessous.

- Coloured pages / Pages de couleur
- Pages damaged / Pages endommagées
- Pages restored and/or laminated /  
Pages restaurées et/ou pelliculées
- Pages discoloured, stained or foxed /  
Pages décolorées, tachetées ou piquées
- Pages detached / Pages détachées
- Showthrough / Transparence
- Quality of print varies /  
Qualité inégale de l'impression
- Includes supplementary material /  
Comprend du matériel supplémentaire
- Pages wholly or partially obscured by errata  
slips, tissues, etc., have been refilmed to  
ensure the best possible image / Les pages  
totalement ou partiellement obscurcies par un  
feuilleton d'errata, une pelure, etc., ont été filmées  
à nouveau de façon à obtenir la meilleure  
image possible.
- Opposing pages with varying colouration or  
discolourations are filmed twice to ensure the  
best possible image / Les pages s'opposant  
ayant des colorations variables ou des décolorations  
sont filmées deux fois afin d'obtenir la  
meilleure image possible.

This item is filmed at the reduction ratio checked below/  
Ce document est filmé au taux de réduction indiqué ci-dessous.

	10x		14x		18x		22x		26x		30x
	12x		16x		20x		24x		28x		32x

(A checkmark is present in the 26x box.)

The copy filmed here has been reproduced thanks to the generosity of.

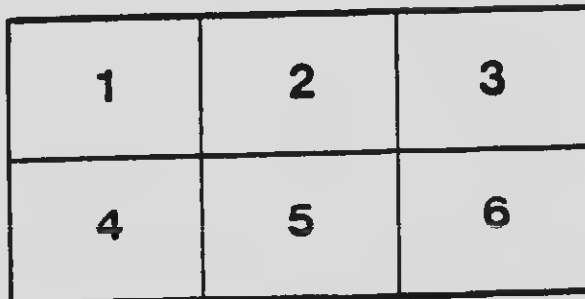
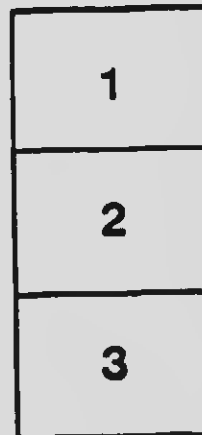
National Library of Canada

The images appearing here are the best quality possible considering the condition and legibility of the original copy and in keeping with the filming contract specifications.

Original copies in printed paper covers are filmed beginning with the front cover and ending on the last page with a printed or illustrated impression, or the back cover when appropriate. All other original copies are filmed beginning on the first page with a printed or illustrated impression, and ending on the last page with a printed or illustrated impression.

The last recorded frame on each microfiche shall contain the symbol  $\rightarrow$  (meaning "CONTINUED"), or the symbol  $\nabla$  (meaning "END"), whichever applies.

Maps, plates, charts, etc., may be filmed at different reduction ratios. Those too large to be entirely included in one exposure are filmed beginning in the upper left hand corner, left to right and top to bottom, as many frames as required. The following diagrams illustrate the method:



L'exemplaire filmé fut reproduit grâce à la générosité de:

Bibliothèque nationale du Canada

Les images suivantes ont été reproduites avec le plus grand soin, compte tenu de la condition et de la netteté de l'exemplaire filmé, et en conformité avec les conditions du contrat de filmage.

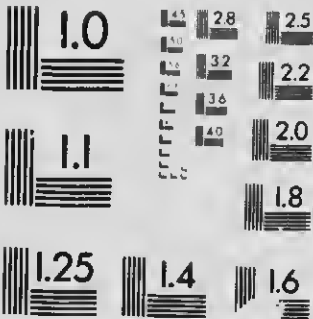
Les exemplaires originaux dont la couverture en papier est imprimée sont filmés en commençant par le premier plat et en terminant soit par la dernière page qui comporte une empreinte d'impression ou d'illustration, soit par la seconde plat, selon le cas. Tous les autres exemplaires originaux sont filmés en commençant par la première page qui comporte une empreinte d'impression ou d'illustration et en terminant par la dernière page qui comporte une telle empreinte.

Un des symboles suivants apparaîtra sur la dernière image de chaque microfiche, selon le cas: le symbole  $\rightarrow$  signifie "A SUIVRE", le symbole  $\nabla$  signifie "FIN".

Les cartes, planches, tableaux, etc., peuvent être filmés à des taux de réduction différents. Lorsque le document est trop grand pour être reproduit en un seul cliché, il est filmé à partir de l'angle supérieur gauche, de gauche à droite, et de haut en bas, en prenant le nombre d'images nécessaire. Les diagrammes suivants illustrent la méthode.

# MICROCOPY RESOLUTION TEST CHART

(ANSI and ISO TEST CHART No. 2)



APPLIED IMAGE Inc

1653 East Main Street  
Rochester, New York 14609 USA  
(716) 482-3300 Phone  
(716) 298-5989 Fax



*With the Compliments of the Chief Librarian*

TORONTO  
PUBLIC LIBRARY

CATALOGUING DEPARTMENT

---

AN EXTENSION OF THE

Dewey Decimal Classification

APPLIED TO

CANADA

---

TORONTO

1912

7  
2

When, in 1900, the Cataloguing department of the Toronto Public Library undertook the work of recataloguing the Reference Library of 85,000 volumes, it was found that for a library which contained one of the largest collections of early Canadian works in existence, the treatment of Canada in the Dewey classification, edition 1891, was sadly inadequate, when it was not historically and geographically out of date. Following the procedure of Mr. Dewey, this department expanded the system, and after a trial sent it to Mr. Dewey with the statement of why and how it was done. When the new edition appeared a year later, and Canada remained as it had been in 1891, we printed our plan and sent proof sheets to those whom we thought might be interested. And now, having received their criticisms, we are adopting the expansion as outlined in this pamphlet.

GRACE H. LOCKE,  
*Chief Librarian.*

TORONTO, January, 1912.





## 971. Canada. British America.

- 01 Acadia
- 02 Constitution Act
- 03 Early Settlement 1700
- 04 1759-1760
- 040 United Empire Loyalists
- 05 1760-1841
- 053 War of 1812-15
- 054 Rebellion 1837-38
- 06 1841-1867
- 064 Confederation 1866-7
- 065 British North America 1783-1867
- 07 1867-1901
- 071 Red River Rebellion 1869-70
- 072 Northwest Rebellion 1885

### 1 British Columbia.

- 01 Western
- 011 Coast
- 012 Columbia
- 02 Southern
- 021 New Westminster
- 0211 Vancouver City
- 0212 New Westminster City
- 022 Vancouver
- 023 Victoria
- 03 Eastern
- 031 Yukon and Klondike
- 032 Kamloops

### 2 Northwest.

- 01 Yukon.
- 02 Mackenzie.
- 03 Alberta.
- 031 Northern
- 0311 Edmonton
- 0312 Edmonton City
- 0313 Victoria
- 032 Central.
- 0321 St. Athanas
- 0322 Red Deer
- 0323 Calgary
- 03231 Calgary City
- 033 Southern
- 0331 Macleod
- 0332 Medicine Hat
- 0333 Lethbridge
- 04 Saskatchewan.
- 041 Northern
- 0411 Battleford
- 0412 Prince Albert
- 042 Central.
- 0421 Saskatoon
- 04211 Saskatoon City
- 0422 Humboldt
- 0423 Mackenzie
- 043 Southern.
- 0431 Moose Jaw
- 04311 Moose Jaw City
- 0432 Regina
- 04321 Regina City
- 0433 Sibleyats
- 0434 Qu'Appelle
- 0435 Assiniboia.
- 05 Kewatin.
- 06 Manitoba.
- 061 Northern
- 0611 Dauphin
- 0612 Selkirk.

262	Central
2621	Montreal
2622	Brayton
	Brayton City
2623	Portage La Prairie
2624	Manitoba
263	Southern
2631	Souris
2632	Lisgar
2633	Provencher
	Winnipeg
27	Franklin
28	Ungava
29	Arctic Islands
3	Ontario
31	Northwestern
311	Rainy River
312	Thunder Bay
	Fort William
313	Algoma
314	Nipissing
315	Parry Sound District
316	Muskoka
317	Simcoe
318	Grey
	Owen Sound
32	Western
321	Bruce
322	Huron
323	Perth
	Stratford
324	Middlesex
	London
325	Lambton
33	Southwestern
331	Essex
	Windsor
332	Kent
333	Elgin
	St. Thomas
334	Norfolk
335	Haldimand
336	Welland
34	West-Central
341	Dufferin
342	Wellington
	Guelph
343	Waterloo
	Berlin
344	Oxford
345	Perth
	Bramford
35	Southern
351	Lincoln
	St. Catharines
352	Wentworth
	Hamilton
353	Haldon, Peel
354	York
	Toronto
355	Ontario
356	Durham, Northumberland
357	Hastings, Prince Edward
358	Lennox & Addington
36	Central
361	Haliburton
362	Victoria
363	Peterborough
	Peterborough, City

## Ontario Continued.

37	Southwestern
371	Knox
372	Leest
373	Grenville
374	Dundas
375	St. Catharines
376	Wellington
38	Northeastern
381	Rainy
382	Lambton
383	Carleton Place
384	Ottawa
385	Rideau
386	Prescott
4	Quebec
40	Northern
411	Abitibi
412	Lake St. John
413	Chicoutimi
414	Saguenay
42	Western
421	Pontiac
422	Ottawa
423	Hull
424	Argenteuil
425	Terrebonne
426	Les Collines
427	Vanoye, St-Jean
428	Laval
429	Hochelaga, Jacques-Cartier
430	Montreal
43	Southwestern
431	Huntingdon
432	Beauharnois
433	Chateaugay
434	La Poudre
435	Naperville
436	Verchères
437	Chambly
438	St. Johns
44	North Central
441	Montreal, L'Assomption
442	Joliette
443	Bordier
444	Mackinac
445	St. Maurice
446	Three Rivers
447	Champlain, Portneuf
448	Quebec
449	Quebec, City
450	Montmorency
451	Chicoutimi
45	South Central
451	Richelieu
452	St. Hyacinthe, Bizard
453	Rouville
454	Yamaska
455	Nicolet
456	Drummond, Arthabaska
457	Wolfe, Megantic
458	Lothbinière, Lavoie
46	Southern
461	Thervey
462	Mississinoui
463	Shefford
464	Brome
465	Richmond
466	Sherbrooke
	Sherbrooke, City

971.4

**Quebec Continued.**

467 Stanstead.  
468 Compton.  
47 Southeastern.  
471 Beauce.  
472 Dorchester.  
473 Bellefleur, Montmagny.  
474 L'Islet.  
475 Kamouraska.  
476 Temiscouata.  
477 Rimouski.  
478 Matane, Bonaventure.  
479 Gaspé.

**.5 New Brunswick.**

51 Northern.  
.511 Restigouche.  
.512 Gloucester.  
52 Eastern.  
.521 Northumberland.  
.522 Kent.  
.523 Westmoreland.  
53 Southern.  
.531 Albert.  
.532 St. John.  
.533 St. John, City.  
54 Central.  
.541 Kings.  
.542 Queens.  
.543 Sumbury.  
55 Western.  
.551 York.  
.552 Fredericton.  
.553 Carleton.  
.554 Victoria.  
.554 Madawaska.

**.6 Nova Scotia.**

.61 Northern.  
.611 Cumberland.  
.612 Colchester.  
.613 Truro.  
.614 Pictou.  
62 Southern.  
.621 Antigonish.  
.622 Gwynsborough.  
.623 Halifax.  
.624 Halifax, City.  
.625 Lunenburg.  
63 Western.  
.631 Queens.  
.632 Shellburne.  
.633 Yarmouth.  
.634 Yarmouth, Town.  
.635 Digby.  
64 Cape Breton.  
.641 Annapolis.  
.642 Kings.  
.643 Hants.  
.644 Inverness.  
.641 Victoria.  
.642 Cape Breton.  
.643 Sydney.  
.644 Richmond.

**.7 Prince Edward Island.**

71 Prince.  
72 Queens.  
73 Charlottetown.  
73 Kings.

**.8 Newfoundland.**

.9 Labrador.

# INDEX.

Abitibi	971.411	Fredericton	971.551
Addington	971.358	Frontenac	971.371
Albert	971.531	Gaspé	971.479
Alberta	971.43	Glengarry	971.379
Algoma	971.313	Gloucester	971.512
Annapolis	971.633	Grenville	971.373
Antigonish	971.614	Grey	971.318
Arctic Islands	971.29	Guelp	971.312
Argenteml	971.423	Guy-shorough	971.621
Arthabaska	971.459	Haldimand	971.335
Assiniboin	971.435	Haldimont	971.399
Bagot	971.452	Halifax	971.622
Battleford	971.2411	Halifax, City	971.622
Beauce	971.471	Halton	971.353
Benthons	971.432	Hamilton	971.352
Bellechasse	971.473	Hams	971.635
Berlin	971.343	Hastings	971.357
Berthier	971.443	Hochelega	971.428
Bonaventure	971.478	Hull	971.422
Brandon	971.2922	Humboldt	971.2422
Brandon, City	971.2922	Huntingdon	971.431
Brant	971.345	Huron	971.322
Brantford	971.345	Iberville	971.491
British Columbia	971.1	Inverness	971.641
British North America act, 1867	971.695	Jacques Cartier	971.428
Brome	971.494	Joliette	971.442
Brnce	971.321	Kamouraska	971.475
Calgary	971.2323	Keewatin	971.25
Calgary, City	971.2323	Kent, New Brunswick	971.522
Canada, history	971	Kent, Ontario	971.332
Cape Breton	971.64	Kings, New Brunswick	971.541
Cape Breton, Comty	971.643	Kings, Nova Scotia	971.634
Cariboo	971.131	Kings, Prince Edward Island	971.73
Carleton, New Brunswick	971.552	Kingston	971.371
Carleton, Ontario	971.383	Kootenay	971.332
Cassiar	971.111	Labrador	971.9
Chambly	971.437	Lake St. John	971.412
Champlam	971.449	Lambton	971.325
Charlevoix	971.449	Lamark	971.382
Charlotte	971.533	La Prairie	971.434
Charlottetown	971.72	L'Assomption	971.441
Chateauguay	971.433	Laval	971.427
Chicoutimi	971.413	Leeds	971.372
Colchester	971.612	Lennox	971.358
Comox	971.112	Leithbridge	971.2332
Compton	971.468	Levis	971.458
Cumberland	971.611	Lindsay	971.351
Danphin	971.2611	Lisgar	971.2932
Digby	971.632	L'Islet	971.474
Dorchester	971.472	London	971.324
Drummond	971.456	Lotbiniere	971.458
Dufferin	971.341	Lunenburg	971.623
Dundas	971.374	Macdonald	971.2621
Durham	971.356	Macleod	971.2331
Edmonton	971.2311	Mackenzie	971.22
Edmonton, City	971.2311	Mackenzie, Saskatchewan	971.2423
Elgin	971.333	Madawaska	971.554
Essex	971.331	Manitoba	971.26
Fenian raids, 1866-70	971.664	Marquette	971.2621
Fort William	971.312	Maskinonge	971.444
Franklin	971.27	McLaur	971.478
		Medicine Hat	971.2332

INDEX

Megantic	071.457	Rimonski	071.477
Middlesex	071.324	Ronville	071.453
Mississquoi	071.462	Russell	071.384
Moncton	071.523	Sagouay	071.414
Montralm	071.441	St. Catharines	071.351
Montmagny	071.473	St. Hyacinthe	071.452
Montmorency	071.448	St. John	071.532
Montreal	071.428	St. John, City	071.532
Moose Jaw	071.2431	St. Johns	071.438
Moose Jaw, City	071.2431	St. Maurice	071.445
Muskoka	071.310	St. Thomas	071.333
Nanaimo	071.123	Salteaux	071.2433
Napierville	071.435	Saskatchewan	071.24
New Brunswick	071.5	Saskatoon	071.2421
New Westminster	071.121	Saskatoon, City	071.2421
New Westminster, City	071.121	Selkirk	071.2612
Newfoundland	071.8	Shelford	071.463
Nicolet	071.455	Shellburne	071.625
Nipissing	071.314	Sherbrooke	071.460
Norfolk	071.334	Sherbrooke, City	071.466
Northumberland, New Brunswick	071.521	Simeoe	071.317
Northumberland, Ontario	071.356	Soulanges	071.426
Northwest	071.2	Souris	071.2631
Northwest rebellion, 1885	071.072	Stanstead	071.407
Nova Scotia	071.6	Stormont	071.375
Ontario	071.3	Stratford	071.323
Ontario, County	071.355	Strathcona	071.2321
Ottawa	071.422	Smithury	071.543
Ottawa, City	071.383	Sydney	071.643
Owen Sound	071.318	Temiscomata	071.470
Oxford	071.344	Terre Bonne	071.424
Perry Sound District	071.315	Three Rivers	071.445
Peel	071.353	Thunder Bay	071.312
Perth	071.323	Toronto	071.354
Peterborough	071.363	Truro	071.612
Peterborough, City	071.363	Two Mountains	071.425
Pictou	071.613	Ungava	071.28
Pontiac	071.421	Union of Upper and Lower Canada	071.050
Portage la Prairie	071.2623	United Empire Loyalists	071.641
Portneuf	071.446	Vancouver	071.122
Prescott	071.385	Vancouver, City	071.121
Prince	071.71	Vaudreuil	071.426
Prince Albert	071.2412	Vercheres	071.436
Prince Edward	071.358	Victoria, Alberta	071.2312
Prince Edward Island	071.7	Victoria, British Columbia	071.123
Provencher	071.2633	Victoria, Cape Breton	071.642
Qu'Appelle	071.2434	Victoria, New Brunswick	071.553
Quebec	071.4	Victoria, Ontario	071.362
Quebec, City	071.447	War of 1812-15	071.053
Quebec, County	071.447	Waterloo	071.343
Queens, New Brunswick	071.542	Welland	071.336
Queens, Nova Scotia	071.621	Wellington	071.342
Queens, Prince Edward Island	071.72	Wentworth	071.352
Rainy River	071.311	Westmoreland	071.523
Rebellion of 1837-38	071.054	Windsor	071.331
Red Deer	071.2322	Winnipeg	071.2633
Red River rebellion, 1870	071.071	Wolfe	071.457
Regina	071.2432	Yale	071.131
Regina, City	071.2432	Yamaska	071.454
Renfrew	071.381	Yarmouth	071.631
Restigouche	071.511	Yarmouth, Town	071.631
Richelieu	071.451	York, New Brunswick	071.551
Richmond, Cape Breton	071.644	York, Ontario	071.354
Richmond, Quebec	071.465	Yukon	071.21

