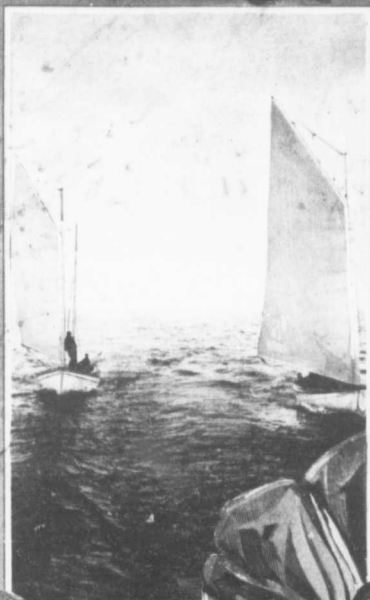


Clovelly



*Lake of
Bays*

MUSKOKA

With Compliments of

*J. W. Tyrrell,
7 Hughson St. South
Hamilton, Ont.*

CLOVELLY
the Beautiful



"THE NARROWS" EN ROUTE TO CLOVELLY

A DAY AT CLOVELLY

"O' gift of God, Oh perfect day
Whereon, shall no man work, but play:
Whereon it is enough for me
Not to be doing, but to be."

"Through every fibre of my brain,
Through every nerve, through every vein,
I feel the electric thrill, the touch
Of life, that seems almost too much."

"I hear the wind among the trees
Playing celestial symphonies,
I see the branches downward bent,
Like keys of some great instrument."

"And over me unrolls on high
The splendid scenery of the sky,
When through a sapphire lake the Sun
Sails like a golden galleon."

CLOVELLY *the Beautiful*



STEAMER "IROQUOIS"
ONE OF THE BOATS WHICH CALL AT CLOVELLY

HOW TO REACH CLOVELLY

This beautiful summer resort, situated on the shore of the Lake of Bays, in the famous Muskoka District of Ontario, is approached by means of the Grand Trunk Railway from Toronto, whence fast express trains are run through to Huntsville—the starting point for the local steam boats for the Portage, Clovelly, Norway Point and other favorite resorts on the Lake of Bays. At Huntsville, railway passengers are landed right at the wharf of the Huntsville and Lake of Bays Navigation Company, where direct connection is made with the fine steamer Algonquin, a companion boat of the Iroquois and Mohawk, all of which are first class boats and afford every comfort to the travelling public.

Prospective Clovelly Cottagers are advised to purchase through tickets from their homes to destination on Lake of Bays, and to have their baggage checked through in like manner, so as to avoid all personal inconvenience in making transfers.

CLOVELLY *the Beautiful*



ROCKY POINT AND BATHING BEACH

Passengers leaving Toronto about 11.00 a. m. reach Clovelly about 5.30 p. m. or half an hour earlier than those bound for the "Wawa" at Norway Point.

A prominent feature of Clovelly, which possesses a fine new pier, is its accessibility, situated as it is, on the main route of the Lake boats, which pass frequently each day between the Portage and all other Lake of Bay ports.

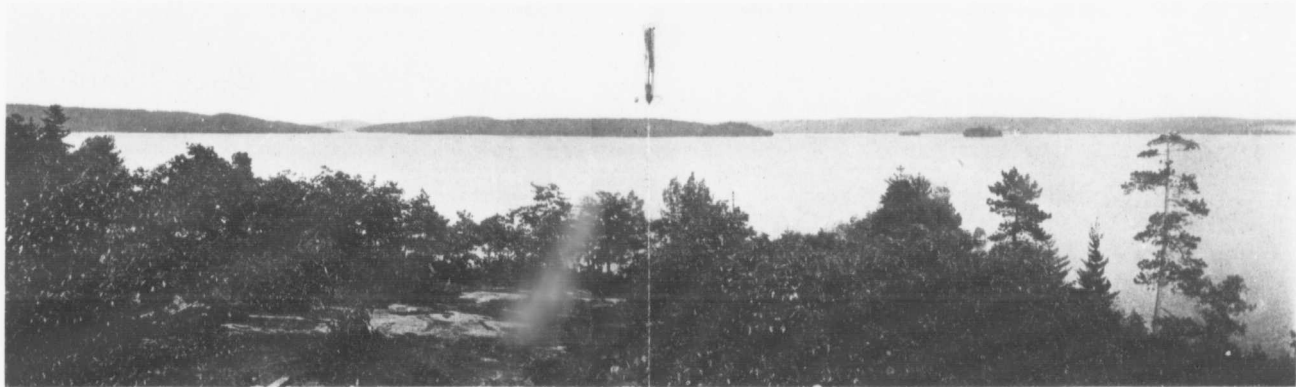
SOME OF THE ATTRACTIONS

Among the many attractions of Clovelly may be mentioned a beautiful sandy beach, affording a perfectly safe place for bathing, as well as for boat and canoe landings. Also lovely shady walks through the fragrant balsam woods, and during their seasons, a great variety of wild fruits are found in abundance.

Golf Links are being acquired immediately adjoining this resort, and it is the intention to lay out a nine hole course this season.

CLOVELLY
the Beautiful

CLOVELLY
the Beautiful



COTTAGE SITES AT CLOVELLY

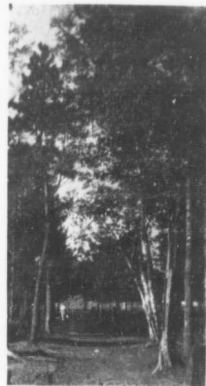


15 LB. TROUT CAUGHT
NEAR CLOVELLY

CLOVELLY THE BEAUTIFUL

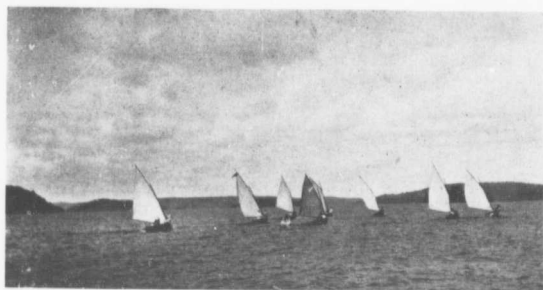
A gentleman, familiar with all the beauty spots of the Lake-of-Bays, visited CLOVELLY for the first time last summer, and said **"I must take off my hat to this, as the grandest view on the whole Lake."** It certainly does command the most enchanting view of the Lake and its many beautiful islands, and is in every respect an ideal spot for a summer cottager.

The elevation of the Lake-of-Bays is over one thousand feet above sea level, and is three hundred feet higher than the lower Muskoka Lakes, the atmosphere is in consequence exceptionally clear and bracing.



A SHADY WALK

CLOVELLY *the Beautiful*



REGATTA DAY SAILING RACE

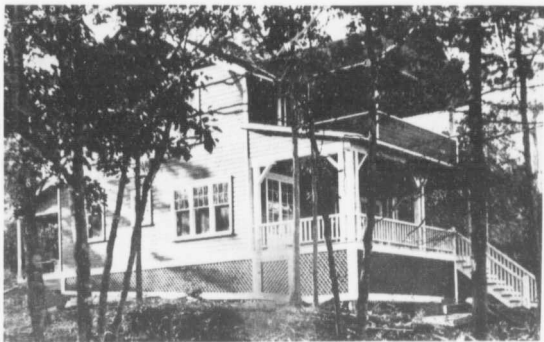
COTTAGES AND BUILDING SITES AVAILABLE

Several picturesque cottages, varying in size and design have been built at Clovelly and are ready for occupation. These have every comfort and convenience, including wide verandas, sleeping porches, hard wood floors, large fire places built of beautiful boulders, bathrooms, and pure spring water supplied by a gravity system from the hills near-by.

In addition to the cottages, there is available a great choice of attractive building sites, some fronting on the sandy beach, and others on the higher rocky shore.

The White House Hotel adjoins CLOVELLY on the west, and supplies of fresh produce can be obtained from near-by farmers, as well as from the supply boat which calls semi-weekly, so that housekeeping cares are reduced to a minimum.

CLOVELLY
the Beautiful

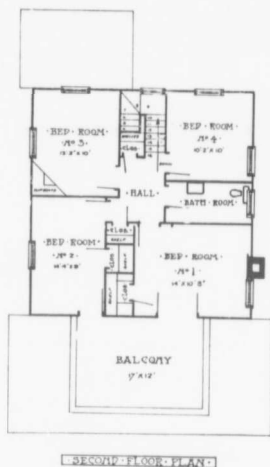
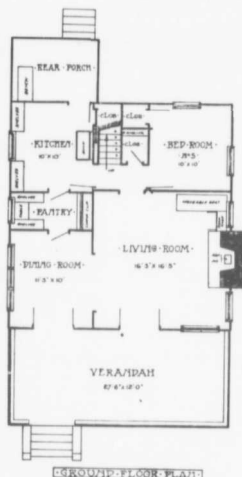


COTTAGES

PRICES

The sale prices of cottages with large lots vary from twenty two hundred to twenty eight hundred dollars, and the prices of vacant building sites range from about two hundred to five hundred dollars.

CLOVELLY *the Beautiful*



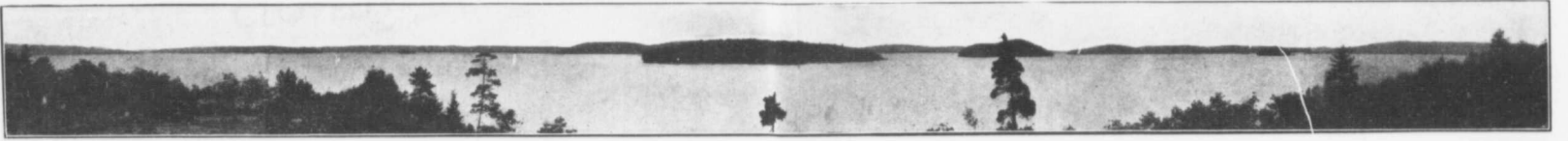
· PLAN · OF · CLOVELLY · COTTAGE ·

For further particulars regarding this ideal Summer Cottagers Resort communicate with

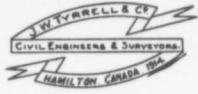
J. W. TYRRELL & CO.

7 Hughson Street South - - - Hamilton, Ontario

During the months of July, August and September, Mr. Tyrrell will be at his summer home at Norway Point, (Glenmount Post Office) only two miles from Clovelly, and during those months will be pleased to show the property to prospective buyers.



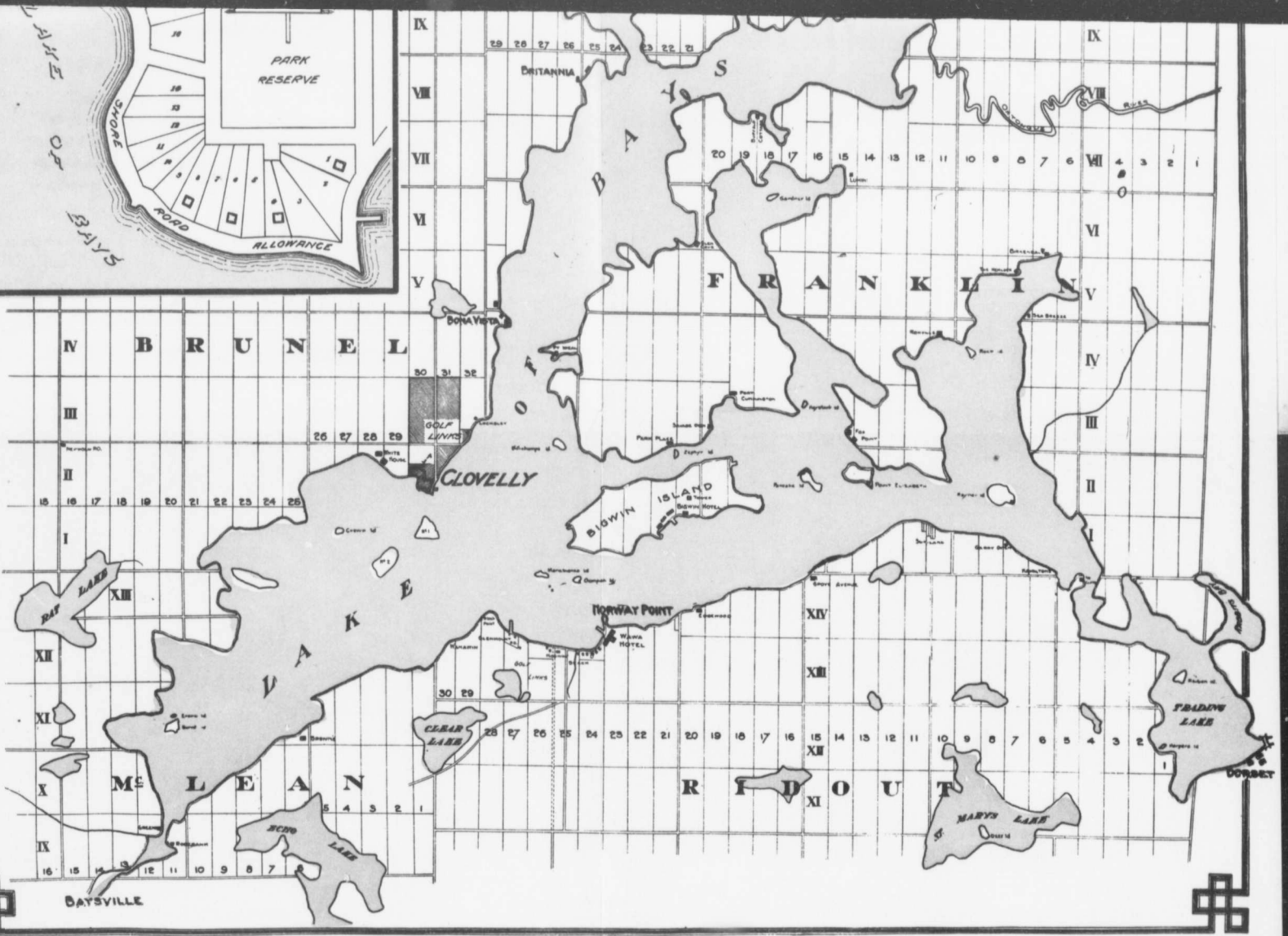
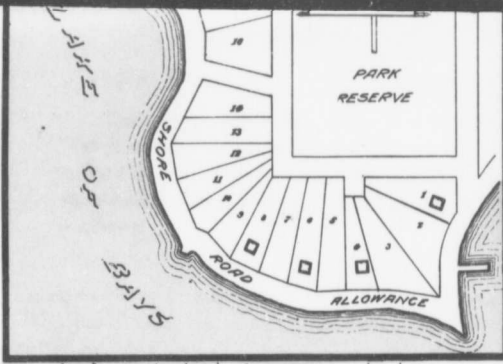
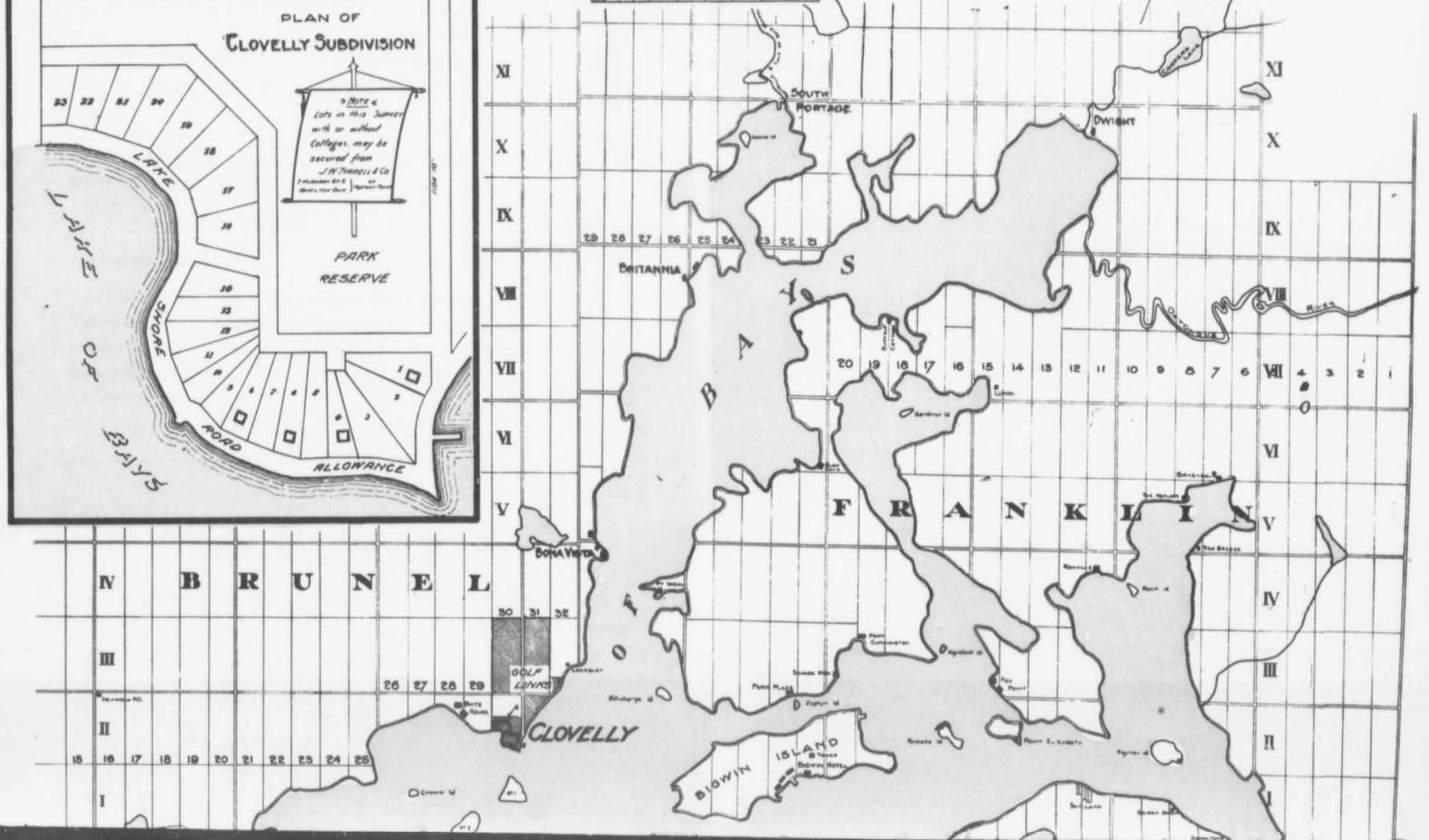
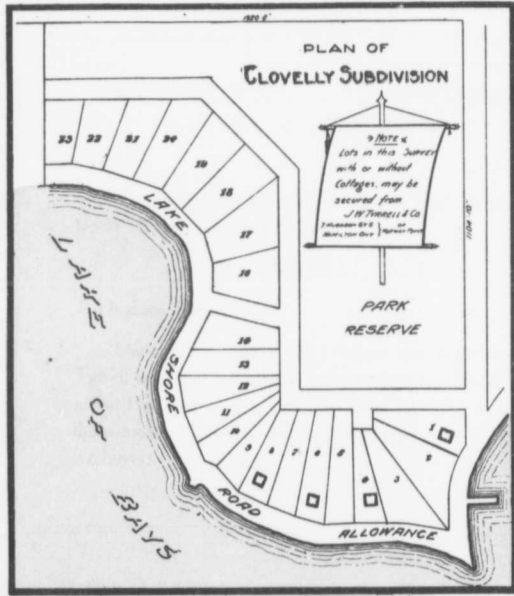
1-Fox Point 2-Bigwin Island and Hotel 3-Wawa Hotel 4-Glenmount P.O. 5-Baysville 6-White House



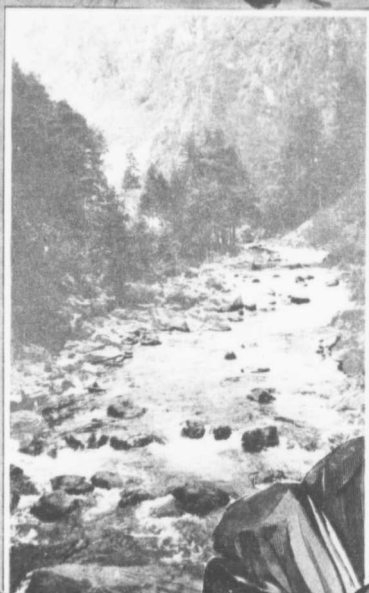
MAP OF LAKE OF BAYS DIST. MUSKOKA



Scale
0 MILES 1 MILE 2 MILES



Clovelly



Lake of
Bays

MUSKOKA