

**CIHM
Microfiche
Series
(Monographs)**

**ICMH
Collection de
microfiches
(monographies)**



Canadian Institute for Historical Microreproductions / Institut canadien de microreproductions historiques

© 1998

Technical and Bibliographic Notes / Notes techniques et bibliographiques

The Institute has attempted to obtain the best original copy available for filming. Features of this copy which may be bibliographically unique, which may alter any of the images in the reproduction, or which may significantly change the usual method of filming are checked below.

- Coloured covers / Couverture de couleur
- Covers damaged / Couverture endommagée
- Covers restored and/or laminated / Couverture restaurée et/ou pelliculée
- Cover title missing / Le titre de couverture manque
- Coloured maps / Cartes géographiques en couleur
- Coloured ink (i.e. other than blue or black) / Encre de couleur (i.e. autre que bleue ou noire)
- Coloured plates and/or illustrations / Planches et/ou illustrations en couleur
- Bound with other material / Relié avec d'autres documents
- Only edition available / Seule édition disponible
- Tight binding may cause shadows or distortion along interior margin / La reliure serrée peut causer de l'ombre ou de la distorsion le long de la marge intérieure.
- Blank leaves added during restorations may appear within the text. Whenever possible, these have been omitted from filming / Il se peut que certaines pages blanches ajoutées lors d'une restauration apparaissent dans le texte, mais, lorsque cela était possible, ces pages n'ont pas été filmées.
- Additional comments / Commentaires supplémentaires:

L'Institut a microfilmé le meilleur exemplaire qu'il lui a été possible de se procurer. Les détails de cet exemplaire qui sont peut-être uniques du point de vue bibliographique, qui peuvent modifier une image reproduite, ou qui peuvent exiger une modification dans la méthode normale de filmage sont indiqués ci-dessous.

- Coloured pages / Pages de couleur
- Pages damaged / Pages endommagées
- Pages restored and/or laminated / Pages restaurées et/ou pelliculées
- Pages discoloured, stained or foxed / Pages décolorées, tachetées ou piquées
- Pages detached / Pages détachées
- Showthrough / Transparence
- Quality of print varies / Qualité inégale de l'impression
- Includes supplementary material / Comprend du matériel supplémentaire
- Pages wholly or partially obscured by errata slips, tissues, etc., have been refilmed to ensure the best possible image / Les pages totalement ou partiellement obscurcies par un feuillet d'errata, une pelure, etc., ont été filmées à nouveau de façon à obtenir la meilleure image possible.
- Opposing pages with varying colouration or discolourations are filmed twice to ensure the best possible image / Les pages s'opposant ayant des colorations variables ou des décolorations sont filmées deux fois afin d'obtenir la meilleure image possible.

This item is filmed at the reduction ratio checked below /
Ce document est filmé au taux de réduction indiqué ci-dessous.

10x		14x		18x		22x		24x		26x		30x	
								<input checked="" type="checkbox"/>					
12x		16x		20x		24x		28x		32x			

The copy filmed here has been reproduced thanks to the generosity of:

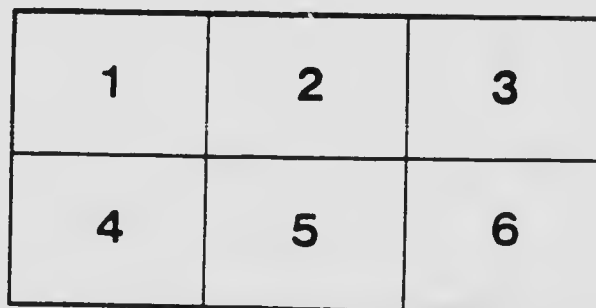
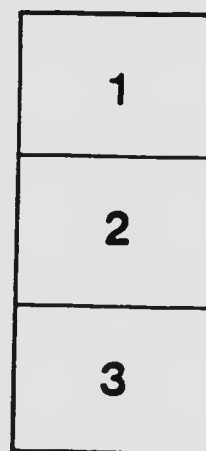
New Brunswick Museum,
Library & Archives Department

The images appearing here are the best quality possible considering the condition and legibility of the original copy and in keeping with the filming contract specifications.

Original copies in printed paper covers are filmed beginning with the front cover and ending on the last page with a printed or illustrated impression, or the back cover when appropriate. All other original copies are filmed beginning on the first page with a printed or illustrated impression, and ending on the last page with a printed or illustrated impression.

The last recorded frame on each microfiche shall contain the symbol \rightarrow (meaning "CONTINUED"), or the symbol ∇ (meaning "END"), whichever applies.

Maps, plates, charts, etc., may be filmed at different reduction ratios. Those too large to be entirely included in one exposure are filmed beginning in the upper left hand corner, left to right and top to bottom, as many frames as required. The following diagrams illustrate the method:



L'exemplaire filmé fut reproduit grâce à la générosité de:

New Brunswick Museum
Library & Archives Department

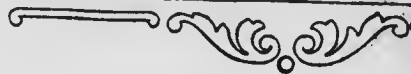
Les images suivantes ont été reproduites avec le plus grand soin, compte tenu de la condition et de la netteté de l'exemplaire filmé, et en conformité avec les conditions du contrat de filmage.

Les exemplaires originaux dont la couverture en papier est imprimée sont filmés en commençant par le premier plat et en terminant soit par la dernière page qui comporte une empreinte d'impression ou d'illustration, soit par le second plat, selon le cas. Tous les autres exemplaires originaux sont filmés en commençant par la première page qui comporte une empreinte d'impression ou d'illustration et en terminant par la dernière page qui comporte une telle empreinte.

Un des symboles suivants apparaîtra sur la dernière image de chaque microfiche, selon le cas: le symbole \rightarrow signifie "A SUIVRE", le symbole ∇ signifie "FIN".

Les cartes, planches, tableaux, etc., peuvent être filmés à des taux de réduction différents. Lorsque le document est trop grand pour être reproduit en un seul cliché, il est filmé à partir de l'angle supérieur gauche, de gauche à droite, et de haut en bas, en prenant le nombre d'images nécessaire. Les diagrammes suivants illustrent la méthode.

COLDSTORES



THE NEW BRUNSWICK
COLD STORAGE CO.,
LIMITED.
ST. JOHN, N.B.
CANADA.

64.028
533Co

664.02B
11533 Co



The New Brunswick Cold Storage Co., Limited.

Warehouses:

672 690 Main Street, Head S. S. Pier No. 9,
Saint John, N. B.
Canada.

DIRECTORS.

R. J. GRAHAM, *President*, Belleville, Ont.

(Vice-President International Apple Shippers Association.)

GEO. McAVITY, *Vice-President*, Saint John, N. B.

L. S. MACOUN, *Secretary-Treasurer*, Central Chambers, Ottawa, Ont.

H. R. ROSS, *General Manager*, Saint John, N. B.

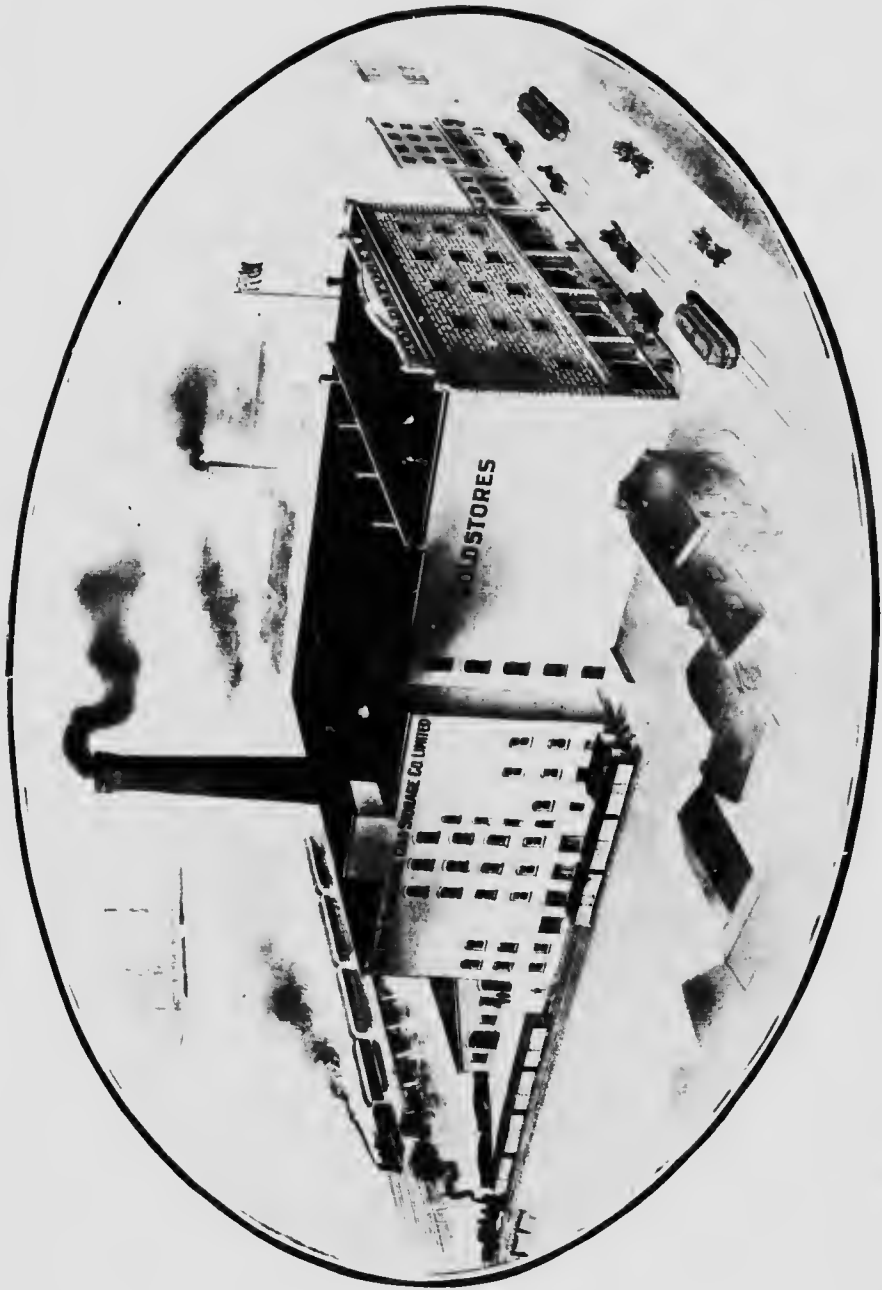
(EX-OFFICIO.)

The Honorable Provincial Secretary of New Brunswick.

The Honorable Commissioner for Agriculture of New Brunswick.



THE SITE, LOOKING FROM MAIN STREET, JUNE, 1907



F. Neil Brodie, Architect,
Saint John, N. B. The New Brunswick Cold Storage Company, Limited, December 1907.

The New Brunswick Cold Storage Company, Limited.

Cold Storages

“Should a great modern cold storage plant have been located at the port of Saint John?”

Primarily, because cold storage is the connecting link in the great system of transportation between Canada and Europe and was the missing link in the port of St. John which plays so important a part in the above system. Co-incident with this was the want of a general warehouse with good railway and water shipping facilities, low insurance rates and modern equipment. St. John is the home of 50,000 people and the main source of wholesale supply for well nigh a million more. The city for years has been famous as a wholesale grocery centre. Business in Canada has grown faster than the facilities of ten years ago can accommodate and for the prompt handling and distribution of general merchandise the warehouse and transfer company so long recognized as an essential feature of American business, is coming to play an equally strong part in the trade of our people.

All Cold Storages require three things in their make up— strength to carry a load; ability to resist fire; walls to prevent loss of temperature. The plant of The New Brunswick Cold Storage Company, Limited, is the embodiment of the best ideas yet put forward touching all three points. The house possessing these features and being situated so as to most readily meet the requirements of its patrons in the matter of traffic and transfer does not in these modern days require any justification for its existence. Patrons of the various channels of commerce which end or commence their sea voyage during the fall, winter and early spring months at St. John have for years been face to face with a serious commercial problem. The carrying facilities available left little to be exacted. The holding facilities available were things for the future to produce.

In this house system and cleanliness are necessary and marked features. Its construction and equipment are all designed to further neatness and order. No bank handles its customers' bills more carefully or with closer checking than this house its patron's goods.

The New Brunswick Cold Storage Company, Limited.



FROM THE UNION STATION, SHOWING SIDINGS, PLATFORM AND POWER HOUSE.

This plant is extensive and in the fullest sense complete. Built on the harbor front and having yard and siding facilities connecting with both the Canadian Pacific and Intercolonial Railways equal to loading or unloading sixteen cars at once, it has risen quietly and quickly, and is not surpassed in completeness of equipment by any yet built elsewhere. The main structure is of brick, five stories and basement 100 x 100 feet, and there is a wing running out to Main Street 100 x 62½ feet. The power station stands on the harbor side, is 50 x 80 feet and completely cut off from the main building. Reinforced concrete was employed in its construction—foundations, floors, walls and roof. The completed buildings represent:

- 1,700 pieces piling.
- 2,650 cubic yards concrete.
- 522,000 feet scantling.
- 115,000 feet hardpine.
- 75,000 feet spruce and birch flooring.
- 1,100,000 bricks.
- 75,000 square feet cork insulation.

The New Brunswick Cold Storage Company, Limited.



INTERIOR FISH FREEZER, CARRIED AT 15° BELOW ZERO.

Each wall is a fire-wall; every window frame is of metal and every glass is wired glass. In the interior construction of the building each post stands directly above the one on the floor below. Every post in the cellar stands on a pier four feet square and six feet deep, of concrete, and each pier stands on twelve piles driven to the rock below. The floors are of mill construction throughout. The various departments are shut off from each other by fireproof walls and fire-doors. The wall finish, partitions, and freezer floors are of cork sheets (as illustrated), laid on Ko-sat paper covered with cement finished smooth. Thus the building is air tight. The cork is a non conductor. The cement finish makes it easy to wash down and the whole structure is fire and rat proof. The elevator shafts and stairs are of brick. Their doors are of the rolling steel, shutter type, with fusible link.

On the ground floor is fitted up a fish freezer, icing and storage department cut off absolutely from the rest of the building. Fresh fish may be landed here from boats at the wharf to be frozen, dipped

The New Brunswick Cold Storage Company, Limited.



APPLES, READY FOR THE STEAMER.

and stored. On this floor also are two meat freezers, general room for local customers, a cheese room, butter room, customs bond room, fur and fabric room, and all the receiving space of the whole building. The basement is equipped for storage for beer at a wide range of temperatures, and also has a general storage for molasses. On the first floor are a second bond room, an apple storage room and a freezer 50 x 100 for large stocks of any kind. In front are two apple sorting rooms, a new and highly appreciated innovation, permitting the stock to be repacked without unnecessary handling or serious rise in temperature. The second, third and fourth floors are all air cooled fruit storage departments, each with sorting accommodation and each with a room for general frostproof storage in the wing. The Main Street front is of gray granite and ranks with the city's finest. There are here four stores on the ground floor which are calculated to further the company's scheme of centralized stocks. These are rented to patrons wishing to engage in meat, fish, dairy produce or fruit business. The walls are steel finished and each is fitted in the rear with a great cork filled ammonia freezer entirely independent of the big warehouse. No more attractive stores can be found in any lower province city and the patrons have the benefit consequent on the removal of ice and lighting bills otherwise incurred, in addition to carrying their main stocks in the big house.

The New Brunswick Cold Storage Company, Limited.



GETTING THEM READY. NOTE THE RUBBISH REMOVED

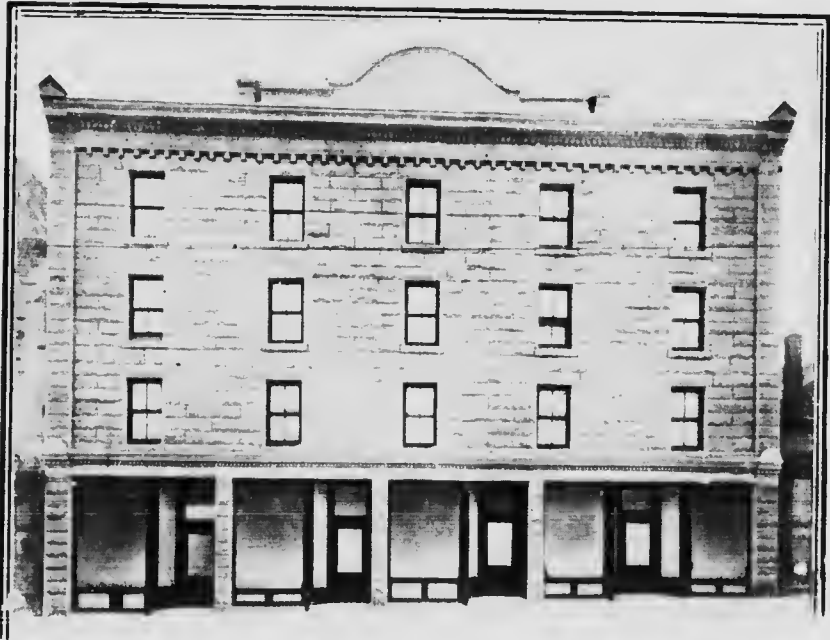
In speaking particularly of the apple trade, in which cold storage is of interest, it is at once obvious that St. John possesses vastly superior advantages to those of the port of Montreal. For the simple reason that during the shipping season of the higher priced sorts of



BEFORE AND AFTER SORTING. NOTE THE SLACK

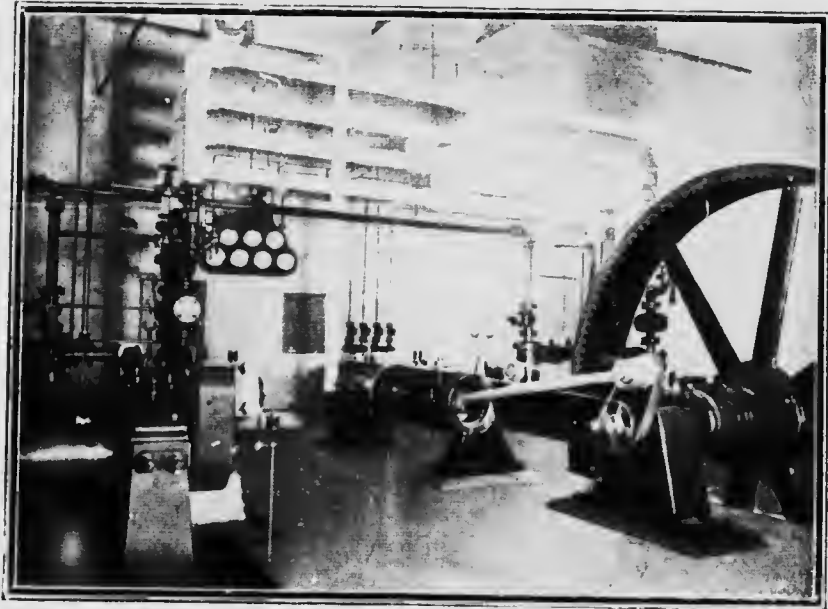
The New Brunswick Cold Storage Company, Limited.

apples, the Saint Lawrence is closed to navigation. If, therefore, the fruit were stored there, there still remained the risk of winter transportation to St. John for shipment. All this is obviated by having the fruit stored at St. John. As a matter of fact St. John is the real terminal for cold storage purposes in connection with a much wider range of ocean bound traffic. In the case of apples, however, it was not only the removal of the frost risk in the mind's eye of the shipper, but also the desirability of having fruit repacked at tide water in order to avoid the wholesale claims for "slacks" on reaching the English market, and also to afford some ground for argument in meeting these claimants. The export apple business of Canada especially of the province of Ontario is yet in its infancy, but year after year heavy losses have been incurred through all these causes and each shipper has admitted it to be one of the chief obstacles of the trade. Thousands of young trees in Ontario and Nova Scotia are just now coming into bearing and the promoters of this business realized at the outset that quite aside from any other facilities they might be able to offer as a result of their building the house, the apple trade must be kept before them as one of the chief ends to be served.



MAIN STREET WING.

The New Brunswick Cold Storage Company, Limited.



CORNER OF ENGINE ROOM SHOWING COMPRESSORS.

The refrigerating system installed by the Linde people is of the most modern type and is in duplicate throughout; that is, if any machine or part breaks down or gives out at any time, the reserves immediately take up the work. Two Linde compressors, each having a capacity equal to the cold made by sixty five tons of melted ice in twenty four hours, sit side by side in the power station and each is direct connected with its 125 h. p. Corliss Goldie-McCulloch engine which take steam from two 150 h. p. boilers. These compressors are, of course, ponderous machines which must at any time give their prospective patrons an added sense of security. Each is fitted both with the expansion and circulation system, the former in the cold rooms and the latter in the fruit rooms where change of air tends to more satisfactory results. Both may run together or separately on either or both systems. The circulation or cool air system which has its coils in a chamber on the ground floor, is handled by fans driven by electric motors. Motors of the same type handle the elevators in the building. It is truly a beltless and shaftless plant. Light and

The New Brunswick Cold Storage Company, Limited.

power come from two C. G. E. dynamos direct connected with 40 h. p. Ideal engines. These again may run together or separately and handle the lighting, the fans, the hoists and the elevators. Water for the huge double pipe condensers in connection with the compressors is taken at each rise of tide.



PART OF A ROW OF FUR COATS AT 25°.

Let us consider some of the interests affected by the provision of cold storage facilities at St. John. There is, as we have said, the fruit shipper of Ontario or Nova Scotia, the shipper of fresh salmon from British Columbia, of fresh meat from Chicago, Kansas City, Omaha or Central Canada, of eggs from Prince Edward Island, of fish from the Bay of Fundy or Miramichi, of potatoes from any point in the provinces and of dairy products from any point of the country. In the item of cheese, this is especially the case with reference to this house as cheese also becomes one of the lines which is seriously damaged by freezing in transit. And the cheese shipper who has previously been taking his winter requirements to the English market in advance of the closing of navigation in Montreal may now avail himself of equal freights, better storage and lower insurance at St. John. Locally also cold storage is of greatest value to the produce dealer since it affords him a means to prevent at certain seasons glutted markets and heavy losses in mutton, poultry, eggs, dairy produce,

The New Brunswick Cold Storage Company, Limited.

potatoes and the like. It is also of the greatest value to the importer of oranges, grapes and other green fruits, dried fruits and many important lines. In connection with the fish trade cold storage is of the very highest value. Not only may it be useful in the case of British Columbia salmon, but Bay of Fundy salmon, herring, hake, halibut, smelts and other fish may be frozen and stored, and all kinds of cured fish held for better markets. In connection with the item of bait alone, it is of the utmost importance to have fish freezing and storing facilities; thus the fishermen can bring fresh fish to the freezers and take away bait for use in line fishing, doing away with the annual shortages in one line or another, due to the failure to provide against the requirements of the season as they may be influenced by the weather.

Not the least interesting feature of the business is the general warehousing. The customer pays a rate based roughly on one cent rental for each cubic foot of space occupied per month. He pays insurance on a basis of 50 cents per hundred dollars per annum. When he sells or requires goods he simply sends down his written order with his truckman. That party on receiving the goods signs in the blank form. There is no delay, no red tape, no high-priced help, no careless clerk, no rent, nothing but a straight buying and selling proposition. He can double his business because he has the time. He can halve his space because he does not require it. Herein is a new and exact type of commercial science.

This preamble leads up to the question of cost. It does appear to us that the right question is not "What will it cost?" but "What will it save?" Two classes of fruit storage are offered; one refrigerated, the other merely frostproof. The former, of course, represents the very best service that science backed by capital can provide. Like most other things worth the having, it costs something in advance of the ordinary method. It means, however, the difference between ordinary postage and registration on a letter; that is, when a man pays his money for refrigerated storage he may depend on it that his goods will be looked after. This does not mean that goods offered for frostproof storage are in any way neglected. Far from it. It simply means that in a house which at its limit can hold only 110,000 barrels, the stock for which the price is paid is granted the accommodation to which the price entitles it.

Advertisement

Insurance.

William Thomson & Co.

(Every kind of Insurance except life.)

MARINE,
ACCIDENT,
AUTOMOBILE,

FIRE,
HEALTH,
YACHTS,

GASOLINE AND STEAM LAUNCHES,

EMPLOYER'S LIABILITIES,

WORKMAN'S COLLECTIVE,

VESSELS AND TEAM LIABILITY,

ELEVATOR AND THEATRE LIABILITY,

DAMAGE TO PERSONAL PROPERTY,

LIVE STOCK, BOILER, PLATE GLASS.

*Facilities for large lines and at
lower rates than you are paying.
Why not get a proposition from
us on your insurance.*

Absolute Security.

Lowest Rates.

William Thomson & Co.

St. John. Montreal. Toronto. Halifax.

Advertisement

"Star" Cork Board Insulation.



The above form of insulation represents one course of 3 inch Cork Board applied to brick wall with a full bed of Portland Cement mortar and the exterior cork surface finished with a $\frac{1}{2}$ in. cement plaster.

"Star" Cork Board is the best form of insulation for all refrigerating plants, because—

It provides the maximum of efficiency to a minimum of space.

It is adaptable to any building construction.

It has no capillarity and resists moisture, and hence undergoes no alteration in its insulating properties, remaining permanently efficient.

It is sanitary, germ and vermin proof.

It will not disintegrate or decay.

It is cheapest to install and can safely be entrusted to any ordinary mechanic.

It is non-absorbent in itself, and does not require expensive protection.

It is odorless.

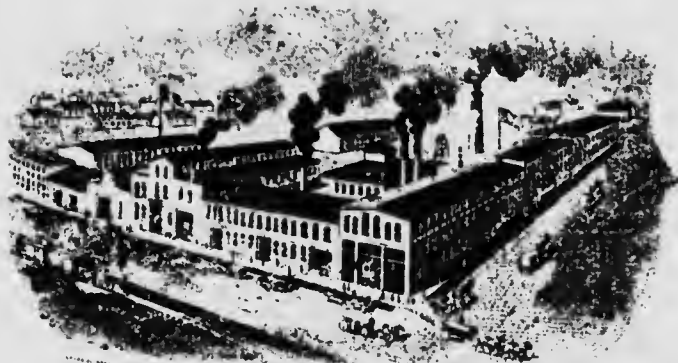
Write for Catalogue and full particulars.

United Cork Companies,

Lorimer and McKibben Streets,

Brooklyn, N. Y.

Advertisement



ESTABLISHED 1835.

JAMES FLEMING,

Phœnix Foundry and
Locomotive Works.

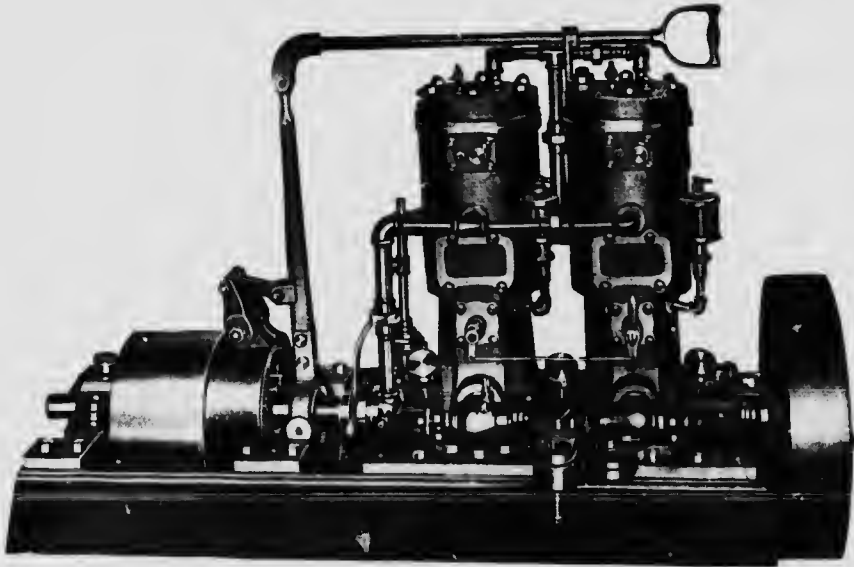
ESTABLISHED 1835.

ST. JOHN, N. B.

Marine and Stationary Engines, Boilers and Machinery
OF EVERY DESCRIPTION.

Iron and Brass Castings.

Essex Gasoline Marine Engines, 2 to 40 H. P.



ESSEX GASOLINE ENGINE, 10 HORSE POWER.

Advertisement

Household Refrigerators

WE MAKE THEM IN

Fifteen Different Sizes and Styles.

"BUILT TO ROB THE ICE MAN"

Insulation Perfect.



Circulation Direct and Positive.

Low Temperature.
Free Circulation.

Pure and Dry Atmosphere.
Free From Moisture.
Perfect Drainage.

Easy Kept Clean.
Economical of Ice

Our name appears on every Refrigerator we manufacture and carries with it an absolute guarantee.

The Sussex Manufacturing Co., Limited,
SUSSEX, N. B.

Advertisement

SYDNEY CEMENT

“Rampart Brand”

SOUND AND RELIABLE



☞ Suitable for all kinds of work. ☞ Used throughout the New Brunswick Cold Storage. ☞ Correspondence invited.

SYDNEY CEMENT CO.
LIMITED

SYDNEY,

NOVA SCOTIA

Cable Address: "RAMPART," Sydney.

Advertisement

Cold Storage Waterproof Insulating Papers.

NEPONSET INSULATING PAPER.

THE standard for over twenty-five years for all kinds of cold storage work. It is the strongest, thickest, and heaviest insulating paper made, quality and cost considered.

"THE TEST OF TIME IS THE TEST THAT TELLS."

Neponset has stood this test longer than any other insulating paper made. It has been used in the largest cold storage-packing establishments, and breweries throughout the United States and Canada for many years.

Neponset weighs 90 lbs. per 1000 square feet. It is put up in rolls 36 inches wide, containing 1000 square feet and, for special work, in rolls 112 inches wide containing 3110 square feet.

KO-SAT INSULATING PAPER.

THE best quality of coated and saturated insulating paper made. It is adapted for all kinds of cold storage work, but especially for work exposed to severe conditions.

It is proof against moisture, acid, air, alkali, and will not deteriorate no matter how much exposed to water. It is very pliable and will not crack or break.

Ko sat weighs 60 lbs. per 1000 square feet. It is put up in rolls 36 inches wide, containing 1000 square feet.

KO SAT was exclusively used in the New Brunswick Cold Storage Co.'s plant. Write us for samples, etc.

F. W. BIRD & SON,
Canadian Factory and Office,
HAMILTON, Ont.



PAROID:—The famous Ready Roofing for all classes of buildings. Contains no tar, is highly fire resisting.

Send for Paroid Proofs showing where it has been used and how to use it.

Advertisement

FAIRBANKS

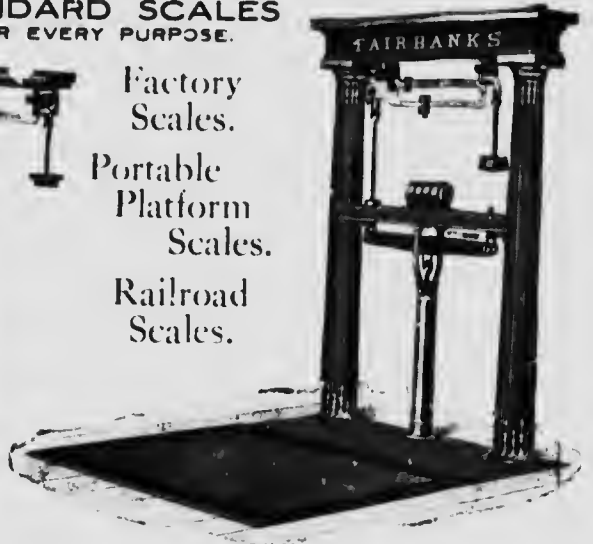
STANDARD SCALES
FOR EVERY PURPOSE.

Warehouse
Scales.

Packing
House
Scales.



Factory
Scales.
Portable
Platform
Scales.
Railroad
Scales.



TRUCKS for Stores, Warehouses, Railroads, or any duty.



*We build
to
Specifications.*

*Send for
complete
Truck Catalog.*



THE CANADIAN FAIRBANKS CO., LTD.

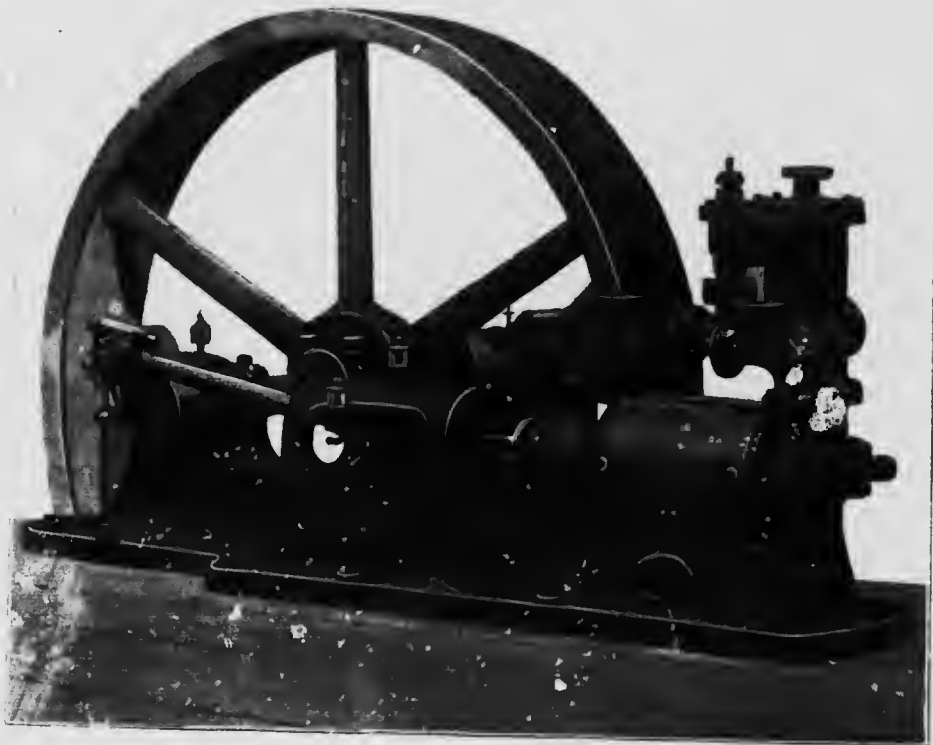
Montreal. Toronto. St. John. N. B. Winnipeg. Calgary. Vancouver

Advertisement.

**The Linde British Refrigeration Co., Ltd.
of Canada.**

HEAD OFFICE, - - MONTREAL, P. Q.

MANUFACTURERS OF
ICE-MAKING AND REFRIGERATING MACHINERY
ON THE LATEST AND MOST IMPROVED SYSTEMS.



SUITABLE FOR

Cold Stores, Abattoirs, Packing Houses, Fish Freezing
Plants, Dairies, Creameries, Cheese Curing Stations, &c.

OVER 7000 MACHINES INSTALLED.

WRITE FOR CATALOGUE.

Advertisement

R. J. GRAHAM,
Belleville, Ont.

Headquarters for
APPLES of all kinds.

Green, Dried, Evaporated, Canned,
Apple Waste, Apple Chops, Apple
Jelly, Apple Juice, Boiled Cider,
Refined Cider, Sweet Cider.

Apple Barrels, Chop Barrels, Half Barrels,
Cooperage Stock, Staves, Hoops, Headings.

Manufacturer of Desiccated Potatoes,
Onions, Cabbages, Turnips,
Celery, Soup Stocks.

Proprietor of two Cold Storages at Belleville, and of
Dominion Fruit Exchange, Ottawa. Auction
Sales three days per week.

COMMISSION MERCHANT.

<i>Foreign Agents at</i>			
Liverpool,	Glasgow,	Bristol,	Birmingham
Sheffield,	Manchester,	Belfast,	Hull,
Hayre,	Paris,	Bordeaux,	Nantes,
Antwerp,	Liege,	Hamburg,	Berlin,
Dusseldorf,	Leipsic,	Bremen,	Amsterdam,
Rotterdam,	Copenhagen	Christiana,	Stockholm,
Bergen,	Smidsvaal,	Berne,	Messina,
	Capetown,	Buenos Ayres,	

Liberal terms made on consignments and goods held in cold storage at Belleville, Ont.

Advertisement

Fire-Proof Safes, Vaults and Vault Doors.

Wheelock Slow Speed Engines. Goldie-Corliss High Speed Engines.
Ideal High Speed Engines. Boilers, Pumps, Condensers and
Heaters. Woodworking and Milling Machinery.



Vault Door with Double Acting Lockwork.

All material and workmanship used in the construction of our products
are of the highest quality obtainable.

We shall be pleased to forward our catalogues and information to persons interested.

The Goldie and McCulloch Co., Limited,
Galt, Ontario, Canada.

Western Branch.
218 McDermot Avenue,
WINNIPEG, Man.

Quebec Agents
ROSS & GREIG,
MONTREAL, Que.

B. C. Agents
ROBT. HAMILTON & CO.,
VANCOUVER, B. C.

Advertisement.

Jones Cold Store Door Company,
Hagerstown, Md.
Cold Storage Doors and Windows.



Why don't you use Jones Doors and Windows? They have no equal, always fit tight against TWO points of contact. One on the overlapping surface of the door and one on the rabbet strip of the frame, and these two points are supplied with a very fine water-proof gasket of our own invention. Why do they fit tighter than other doors? Because the slide bar of the AUTOMATIC FASTENER is forced in behind a keeper with a beveled inner surface and the strong spring forces it farther back on the level as the gasket takes set. Our ADJUSTABLE SPRING HINGE is not a strap hinge. It is a heavy wrought iron bar with a steel spring under it which forces the heel of the door up tight, and the pressure is kept constant as the gasket sets, by simply turning the set screw with your finger. From this you can easily see that the door is as tight in front as it is on the heel. We claim, without hesitancy, that there is no other AUTOMATIC SELF-ADJUSTING FASTENER on the market. If you need doors, why not get one that makes the openings when closed, as tight as the wall? They neither stick nor sag. Shipped hung in frame, ready to set in the opening. Any size or description of Doors or Windows made and shipped promptly. We make a specialty of meeting emergencies during the hot summer months. A large stock on hand ready for delivery upon receipt of "wire" giving us the size of openings.

OAK DOORS A SPECIALTY

Advertisement

A. E. HAMILTON,
Contractor & Builder.

Builders' Supplies, Plumbing, Cooperage,
Staging Material, Dunnage, Repairing.

We did the carpenter work throughout the New Brunswick Cold Storage Co.'s plant. Patrons of theirs requiring anything in our line may correspond with them or with us and be assured of moderate charges and good work.

Estimates furnished promptly.

180-188 Brussels Street, - St. John, N. B.

PHONE, MAIN 1628.

CHARLES E. HALEY,
Stable

Waterloo Street, - ST. JOHN, N. B.

**TRUCKING, MOVING EXPRESSES
AND LIVERY STABLE.**

Get my prices before closing contracts for teaming. Special rates on contracts for six months or one year.

Advertisements

FRANK E. JONES,
*Electrical Engineer and
Contractor.*

House Wiring, Electric Bells, Telephones, Lighting Plants, etc.
A Full Line of Electrical Supplies in stock.

Just arrived a large consignment of Bohemian Shades. I can furnish Fixtures, Glassware and Electrical Supplies cheaper than any firm in this city. Orders attended to promptly by skilled men. Ask me for estimates.

Residence, 140 Broad Street, *Telephone 644.*
SAINT JOHN, N. B.

*QUICK DELIVERY from
our Toronto Factory*

**FOR
REFRIGERATION**

AQUA ^{AND} ANHYDROUS AMMONIA

ICE-MAKING

*A CANADIAN PRODUCT
Guaranteed Absolutely Pure and Dry*

Stock carried also at Montreal, Que., Calgary, Alta., Vancouver, B. C.

Michigan Ammonia Works, Toronto, Ont.



PUMPS

WOOD
WELL
HOUSE
CISTERN
STOCK
AND
HYDRAULIC
PUMPS.

PUMP REPAIRS.

IRON PIPE
FOR CONDUCTING WATER.

Information and cost of Pumps for any purpose
furnished upon application.

Send for Illustrated Catalogue and Price List.

XXX Asphalt Roofing.

(WIRE EDGE)

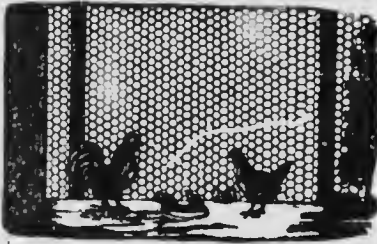


WATERPROOF and SPARKPROOF

The Best Roofing for All Kinds
of Buildings

Samples and Prices sent on request.

WIRE FENCING



POULTRY NETTING

WOVEN WIRE FENCING

BARBED WIRE FENCING

PLAIN WIRE FENCING

We have a full stock of the above on hand Prices right.

LIGHT AND
HEAVY

HARDWARE



WHITE LEAD
PAINTS
OILS
VARNISHES
TURPENTINE
BRUSHES

WINDOW GLASS,
PUTTY, ETC.

CONSTANTLY ON HAND

T. McAVITY & SONS, LTD.

13 TO 17 KING STREET, - - - ST. JOHN, N. B.

