

# THE COMMERCIAL

FINANCE AND INSURANCE REPORT

Subscription, \$2.00 per Annum in Advance.

Established 1882.

Published Weekly.

VOL. 21

WINNIPEG, CANADA, SEPTEMBER 19, 1903

No. 54



## STRATHCONA HOT BLAST

Will burn Soft, Hard or Lignite Coal. Cleanly and Economically. A powerful heater. Uniformity of Heat day and night.

The Fuel saved in one season will more than pay for stove. It gives these results because it burns the gas half of the coal, which is wasted with other stoves.

115-118, two sizes, single heater.  
1115-1118, two sizes, double heater.

Section showing Hot Blast Draft burning the gas half of soft coal.

Merrick, Anderson & Co.  
WINNIPEG.

## TETLEY'S TEA

Is Economy, Health and Pleasure, all in an Air-Tight Packet.

HUDSONS BAY COMPANY

WINNIPEG.

Wholesale Distributors for Western Canada.



TENTS, FLAGS AND  
ROLLER AWNINGS

THE EMERSON-HAGUE  
MANUFACTURING CO. Ltd.

WINNIPEG.

## CODVILLE & CO.

WHOLESALE

## Grocers

Packers of Celebrated

## Gold Standard Teas

Coffees, Baking Powder and Spices

BANNATYNE AVE. E., WINNIPEG.  
Branches: BRANDON and CALGARY

## BROMLEY & CO.



Tents  
Awnings and  
Mattress  
Factory.

Cor. Princess and Alexander St., Winnipeg

## J. McLEOD HOLIDAY

Wholesale Importer of

SMALL WARES, NOTIONS, TOYS,  
FANCY GOODS, CLOCKS,  
JEWELLERY & MEN'S FURNISH-  
INGS.

DIRECT IMPORTER OF SENEGA  
ROOT.

173 Mc Dermot Avenue - Winnipeg

SEND US YOUR

## Sorting Orders

FOR BOOTS,  
SHOES, GLOVES  
ETC.



FOR  
Threshers

LARGE STOCK  
RIGHT PRICES

QUICK DELIVERY

## THOMAS RYAN & CO

LIMITED

Wholesale Boots, Shoes, Gloves, Etc.

WINNIPEG, MAN.

ATTENTION IS  
REQUESTED  
TO OUR ADVERTISEMENT  
ON THE  
INSIDE PAGE OF THIS  
ISSUE.

## The Ames Holden Co. Ltd.

Boots and Shoes and Granby Rubbers.  
WINNIPEG.

## PRESERVING SEASON

NOW ON

PLUMS, PEACHES, MONTANA  
CRABS, ONTARIO BARREL  
APPLES.

Prompt Shipments.  
Your Order Solicited.

## Foley, Lock & Larson

Wholesale

GROCERIES, FRUIT AND PRODUCE

## WATERPROOFS



We have secured from the manufacturers several charming lines at exceptionally low prices.

Men's waterproof, style of cut, in greys, browns and greens. Reg. \$4.00, for \$1.75.  
Crawenette coats, same style, in Oxford greys and greens. Price \$8.00.  
Also a line of ladies' waterproofs, browns and greys, at \$1.50. Worth \$3.50. It will pay you to buy this line now, even if you have to carry them over till next spring.

## Gaults Limited

Importers and Manufacturers.

WINNIPEG

## Jackets and Ulsters

FOR FALL AND WINTER  
WEAR.

A good assortment in all the latest patterns and shades in Beavers, Frieze, Zobelins, Etc.

Children's and Misses', in sizes 24, 27, 30, 33, 36, also 2, 2, 4, 5, 6, 7, 8, 9. Price from \$2.95 up.

Ladies', in sizes 32, 34, 36, 38, 40. Prices from \$3.50 up.

Mail orders for above receive our best attention.

Promptly shipped by Express or Freight.

Order now while you have time.

## R. J. WHITLA & CO'Y

LIMITED,

Wholesale Dry Goods.

WINNIPEG.

## THE TEXAS EYE SHIELD



The best Eye Protector in the market for threshers, also GOGGLES.

## McALLISTER & WATTS

214 Princess Street - WINNIPEG

WINNIPEG  
Business College

Portage Ave. North End Branch opp C.P.R. Depot.

COURSES:—1, Business; 2, Shorthand and Typewriting; 3, Telegraphy; 4, Civil Service; 5, Primary English.

Twelve experienced teachers employed. It pays to go to the best. We are not adventurers in this line of educational work. Full particulars on application.  
G. W. DONALD, Secretary.

# SHOULDERS SHOULDERS SHOULDERS SHOULDERS



They are money makers.  
They cost you six cents  
per lb. less than hams.  
Try a case.



**J. Y. GRIFFIN & CO.**  
PORK PACKERS, WINNIPEG, MAN. LIMITED.

# GRAPES

Our first grape car will be due on Monday. Write or wire for quotations. Can supply you with anything from a single basket to a carload.

**R. A. ROGERS & COMPANY Ltd.**  
WINNIPEG

WHEN BUYING WHY NOT GET THE BEST?

*Stephens'*

PURE  
READY  
MIXED

**PAINT**

MADE FROM  
MANITOBA  
LINSEED OIL.

**G. F. STEPHENS & CO., Limited.**

170 to 178 Market Street.

WINNIPEG

OUR  
**TURPENTINE**

is imported direct from  
the south in tank cars  
and is absolutely

**PURE**

Buy from the importers  
and obtain the lowest  
market price.

**Union Petroleum Co.**

Of Canada,  
WINNIPEG, MAN.

ALWAYS AT THE TOP

*Trade* **W.G.P.** *Mark*

**SHIRTS  
COLLARS**  
and  
**CUFFS**

"Best Made."

MANUFACTURED BY

**THE WILLIAMS, GREENE  
& ROME COMPANY**

Limited.

BERLIN, ONTARIO.

**E. BOISSEAU & CO.**  
TORONTO.

**Wholesale Tailors**

Manufacturers of  
Men's, Youths', Boys' and Children's  
Clothing.

Western Representative:

S. M. JAMES - - Winnipeg

**JOHN W. PECK & CO.**

Manufacturers of

**Clothing  
Shirts  
Furs**



Wholesale Dealers in

**Hats and Caps**

At our Winnipeg Warehouse we carry in above lines, the Largest and Best Assorted Stock to be found in Western Canada. This is important to the numerous business men just starting in this territory. Our long experience of the Western trade enables us to know just what you want. Correspond with us.

MONTEAL, WINNIPEG,  
VANCOUVER.



**BANK OF MONTREAL**

Established 1817.  
Capital all paid up.....\$12,000,000  
Reserve Fund.....\$3,000,000  
Bal. Profit and Loss.....\$435,698.00  
HEAD OFFICE, MONTREAL.

**BOARD OF DIRECTORS:**  
Hon. Lord Strathcona and Mount Royal, G.C.M.G., President.  
Hon. A. C. Drummond, Vice-President.  
A. T. Patterson, Esq., Mayor.  
Sir William McLaughlin, Esq., J. B. Angus, Esq.,  
Ed. S. Greenhalgh, Esq., F. Gault, Esq.,  
E. S. Clouston, General Manager.

BRANCHES in all the principal cities and towns throughout the Dominion of Canada, and in the following cities:  
St. John's, Newfoundland; London, Eng.; 19 Wall Street, Chicago; 115 La Salle Street, St. Louis.  
**BANKERS AND CORRESPONDENTS:**  
Liverpool—Bank of Liverpool.  
Scotland—British Loan Co. Bank and Branches.

**WINNIPEG BRANCH.**  
Travellers Circular Letters of Credit and Commercial Credits issued for use in all parts of the world.  
Collections made on favorable terms.  
Interest allowed on deposits at current rates.  
Drafts sold available in all parts of the United States, Europe and Canada, including Athens and Dawson City.  
A. P. D. MACGACHEN, Manager.

**BANK OF HAMILTON**

Capital (all paid up).....\$2,000,000  
Reserve Fund.....\$1,700,000

**BOARD OF DIRECTORS.**  
Hon. William Gibson, President. George Roach John Proctor, A. B. Lee, John B. Hendrie, J. G. G. Rutherford, Manager.  
J. Turnbull, Vice-President and Gen. Mgr.  
H. M. Watson, Inspector.

Agencies throughout Ontario and at the following points in Manitoba and the West: Brandon, Carleton Place, Hamilton, Mississauga, Toronto, Fort Collins, Pitt Meard, Roland, Stoneville, Winkler, Winnipeg, Indian Head, N.W.T., Moose Jay, N.W.T., Saskatchewan, N.W.T., Kamloops and Vancouver, B.C.

Deposits received and interest allowed.  
General Banking Business Transacted.  
Collections carefully and promptly effected at all points in Canada.  
Savings Banks at all Offices.

**WINNIPEG BRANCH—Opposite Post Office.**  
**GRAIN EXCHANGE BRANCH—131 Princess Street.**

**W S O**



Union Made—The only maker of the famous orders promptly attended to.  
Winnipeg Shirt and Overall Mfg. Co.  
Cor. Main and James Sts., Winnipeg.

**BANK OF NOVA SCOTIA**

Incorporated 1832.  
Head Office—Halifax. Gen. Manager's Office—Toronto.  
**JOHN Y. PATZANT, President.** H. C. McLeod, General Manager.  
Capital Paid-up.....\$2,000,000.00  
Reserve.....\$3,000,000.00  
A General Banking Business Transacted.  
Interest allowed on deposits, including Deposit Receipts and Savings Bank Balances.  
C. A. KENNEDY, Manager, Winnipeg.

**THE ROYAL TRUST COMPANY**

Capital Subscribed.....\$1,000,000  
Capital Paid Up.....500,000  
Reserve Fund.....250,000

Right Hon. Lord Strathcona and Mount Royal, G.C.M.G. VICE-PRESIDENT  
Hon. George A. Drummond, DIRECTORS.  
R. B. Angus, Esq., J. B. Macdonald, Esq.,  
E. S. Clouston, Esq., H. V. Meredith, Esq.,  
A. F. Gault, Esq., A. T. Patterson, Esq.,  
E. S. Greenhalgh, Esq., James Ross, Esq.,  
C. B. Homer, Esq., Sir William C. Van Horne, K.C.M.G.,  
Manitoba Branch: Bank of Montreal Building, Winnipeg.  
Money to Loan on Approved Farm Property.

**IMPERIAL BANK OF CANADA**

Capital authorized.....\$4,000,000  
Capital Paid-up.....\$2,983,892  
Reserve.....\$2,636,512

**DIRECTORS:**  
T. R. Merritt, Pres.; J. D. Wilkie, Vice-Pres.  
Wm. Ramsey, Esq., Elias Rogers, Esq.,  
Robert A. Jeffrey, Esq., Wm. Hamilton, Esq.,  
T. Sutherland Strayer, Esq.

Head Office, Toronto.  
D. B. Wilkie, General Manager.  
E. Hay, Asst. General Manager.  
W. McKim, Chief Inspector.

Branches in Manitoba, the Northwest and British Columbia:  
Brandon, Man. Prince Albert, Sask.  
Calgary, Alta. Regina, Sask.  
Edmonton, Alta. Vancouver, B. C.  
Ferguson, B. C. Victoria, B. C.  
Gordon, B. C. Westland, Ont.  
Nelson, B. C. Woodstock, Ont.  
Porter & Prairie, Man. Welland, Ont.  
Winnipeg (North End)

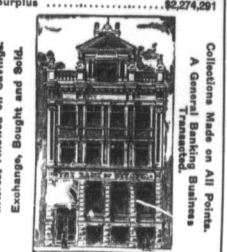
Branches in Ontario and Quebec:  
Ottawa, Ont.  
Burlington, Ont.  
Essau, Ont. Port Colborne, Ont.  
Hamilton, Ont. St. Catharines, Ont.  
London, Ont. St. Catharines, Ont.  
Montreal, Que. St. Thomas, Ont.  
Niagara Falls, Ont. Toronto, Ont.  
North Bay, Ont. Woodstock, Ont.

**WINNIPEG BRANCH.**  
Savings Bank Department—Deposits received and interest allowed.  
Agents in Great Britain—London Bank Limited.  
Money sent by letter or cable to any of the above branches.  
DRAFTS SOLD, available at all points in Canada, United States and Europe.

**MUNICIPAL and other DEBENTURES purchased.**  
N. G. LESLIE, Manager.

**THE BANK OF OTTAWA**

Head Office, Ottawa.  
Capital Authorized.....\$3,000,000  
Capital Paid Up.....\$2,378,500  
Surplus.....\$2,744,261



Winnipeg Branch, J. B. MONK, Mgr.

Collectors Made on All Provinces. A General Banking Business Transacted.  
Ottawa Branch, J. B. MONK, Mgr.  
A General Banking Business Transacted.  
Winnipeg Branch, J. B. MONK, Mgr.

**DOMINION BANK**

Capital Authorized.....\$3,000,000  
Capital Paid Up.....\$2,900,000  
Reserve Fund.....\$2,900,000

President—E. R. Oster, M. P. Vice-President—Wm. D. Matthews, Esq., Manager—G. B. Hough.  
HEAD OFFICE.....TORONTO

**WINNIPEG OFFICES:**  
Main Office—C.P. Main and McDermitt Streets.  
F. L. PATTON, Manager.  
North End Branch—709 Main Street.  
W. C. WATKINSON, Manager.

A general banking business transacted. Interest allowed on deposits in Savings Bank Department.

**BANK OF British North America**

Incorporated by Royal Charter.

The Court of Directors hereby give notice that an interim dividend, free of income tax, for the half year ended 30th June last, of 30 shillings per share, being at the rate of 6 per cent. per annum, will be paid on the 2nd day of October next, to the proprietors of shares registered in the Colonies. The dividend will be payable at the rate of exchange current on the day of October next, to be fixed by the Managers. No transfer can be made between the 15th inst., and the 2nd day of October next, as the books must be closed during that period.

By order of the Court.  
A. G. WALLIS, Secretary.

No. 5 Gracechurch Street, London, E. C.  
1st September, 1903.

A General Banking Business Transacted.  
Safe Deposit Boxes to Rent.

HEAD OFFICE: Toronto, Canada.  
London (Eng) Branch, 50 Lombard St., E. C.  
Capital.....\$8,700,000  
Reserve.....\$3,000,000

HON. GEORGE A. COX, President. ROBT. KILGOUR, Vice-Pres.  
B. E. WALKER, General Manager. ALAN LAIRD, Asst. Gen. Manager.

**THE CANADIAN BANK OF COMMERCE**

Branches in Manitoba and the North West Territories:  
Calgary, Esplanade  
Carleton Place, Ontario  
Dauphin, Manitoba  
Edmonton, Alberta  
Innisfail, Alberta  
Lethbridge, Alberta  
Moose Jaw, Saskatchewan  
Regina, Saskatchewan  
Saskatoon, Saskatchewan  
Winnipeg, Manitoba  
Winnipeg (North End), Manitoba

Branches in British Columbia and Yukon District:  
Atlin, British Columbia  
Cranbrook, British Columbia  
Dawson City, Yukon District  
Fernie, British Columbia  
Greenwood, British Columbia  
Kamloops, British Columbia  
Ladysmith, Yukon District  
Naiamo, Yukon District  
Vancouver, British Columbia  
New Westminster, British Columbia  
Victoria, British Columbia  
White Horse, Yukon District

Branches in Ontario:  
Ayr, Ontario  
Barrie, Ontario  
Belleville, Ontario  
Berlin, Ontario  
Brimley, Ontario  
Burlington, Ontario  
Dundas, Ontario  
Dunlop, Ontario  
Hamilton, Ontario  
Kamloops, Ontario  
Kawartha, Ontario  
London, Ontario  
Oshawa, Ontario  
Ottawa, Ontario  
Parry Sound, Ontario  
Peterborough, Ontario  
Port Hope, Ontario  
Port Perry, Ontario  
St. Catharines, Ontario  
Sarnia, Ontario  
Sault Ste. Marie, Ontario  
Seaford, Ontario  
Simcoe, Ontario  
Toronto, Ontario  
Walkerton, Ontario  
Woodstock, Ontario

Branches in Nova Scotia and New Brunswick:  
Amherst, Nova Scotia  
Antigonish, Nova Scotia  
Barrington, Nova Scotia  
Bridgewater, Nova Scotia  
Lockport, Nova Scotia  
Lunenburg, Nova Scotia  
Miramichi, New Brunswick  
Parsonsburg, Nova Scotia  
Parrsboro, Nova Scotia  
Shelburne, Nova Scotia  
Truro, Nova Scotia  
Windsor, Nova Scotia  
Yorke, Nova Scotia

Branches in the United States:  
San Francisco, Cal.  
Seattle, Wash.  
Shagway, Alaska.

The Bank of England: The Bank of Scotland: The Bank of Montreal Limited: The Union of London and Smiths Bank Ltd.  
Banks in New York.  
The American Exchange National Bank. The Northern Trust Company.

A general banking business transacted. Deposits received and interest allowed. Farmers' and country business given special attention. Municipal and school district accounts treated on favorable terms. Deposits may be made and withdrawn by mail. Out-of-town accounts receive every attention. Communications addressed to the managers of any of the above branches will receive prompt attention.  
Winnipeg Branch: JOHN AIRD, Manager.

Established 1874. 28 Years' Experience.  
**CARRUTHERS, JOHNSTON & BRADLEY**  
Insurance, Financial, Real Estate Agents  
Rent Collections a Specialty. Estates Managed. Money Invested.  
471 MAIN STREET. J. & J. Taylor Safes and Vault Doors. WINNIPEG.

**UNION BANK OF CANADA**

Capital Authorized.....\$3,000,000  
Capital Subscribed.....\$2,500,000  
Capital Paid Up.....\$2,494,000  
Reserve.....\$1,000,000

HEAD OFFICE.....QUEBEC

Andrew Thomson, Esq., Pres. Wm. Price, Esq.  
Hon. John Sharpe, Esq., Vice-Pres. Wm. Shaw, Esq.  
D. C. Thomson, Esq. R. E. Dewar, Esq.  
Ed. Giroux, Esq. John Galt, Esq.  
E. J. Hale, Esq. P. K. Kerfoot, Esq.

E. E. Webb, Esq., Man. F. W. R. Croft, Asst. Inspector.  
H. B. Shaw, Sp. of Western Branches.

Branches in Manitoba:  
WINNIPEG—GEORGE BOWLES, Manager.  
Altona, Manitoba  
Beausejour, Manitoba  
Birtle, Manitoba  
Hudson, Manitoba  
Carleton Place, Manitoba  
Curran, Manitoba  
Cypress River, Manitoba  
Indian Head, Manitoba  
Minnedon, Manitoba  
Melita, Manitoba  
Mantou, Manitoba  
Newburg, Manitoba  
Rosedale, Manitoba  
Hopedale, Manitoba  
Rapid City, Manitoba  
Bois Lake, Manitoba  
Kilbrary, Manitoba  
Morden, Manitoba  
Wawanesa, Manitoba

Branches in N. W. T.:  
Airdrie, N.W.T.  
Carleton Place, N.W.T.  
Edmonton, N.W.T.  
Frank, N.W.T.  
High River, N.W.T.  
Indian Head, N.W.T.  
Innisfail, N.W.T.  
Lethbridge, N.W.T.  
Lonsdale, N.W.T.  
Meadow Lake, N.W.T.  
Moose Jaw, N.W.T.  
Wapella, N.W.T.  
Waskia, N.W.T.  
Weyburn, N.W.T.  
Yorkton, N.W.T.

Branches in Ontario and Quebec:  
Alexandria, Ont.  
Burlington, Ont.  
Crysler, Ont.  
Dundas, Ont.  
Hamilton, Ont.  
Erie, Ont.  
Hastings, Ont.  
Kempville, Ont.  
Merridale, Ont.  
Montreal, Que.  
Newport, Ont.  
New Lonsdale, Ont.  
Portland, Ont.  
Ridley, Ont.  
Shelburne, Ont.  
Smith's Falls, Ont.  
Toronto, Ont.  
Warton, Ont.  
Welland, Ont.

A General Banking Business Transacted.  
Safe Deposit Boxes to Rent.

**WINNIPEG POWER PROPOSITIONS**

The sub-committee of the city council, in whose hands are placed the various power propositions, met Monday morning. Ald. Harvey and Ald. McCarthy being the only two on hand. The proposition, representing the proposed Great Falls proposition, and Mr. Andrews and Mr. Potter, of Buffalo, representing the company who propose to develop the Assiniboine water power.

The proposition discussed at the fire, water and light committee Monday and not made public, is as follows:

1. The company will furnish to the city, and the city shall agree to take, from 500 to 1,500 continuous electrical horse power for a period of ten years or such longer period as the city may desire.

2. The quantity of power used will be determined by Watt meters placed on the city's incoming switchboard, to be located at the power house in the Assiniboine river, and the power used by the city shall in no event be less than 600 horsepower. The potential of the current to be supplied to the city for power shall not be greater than 500 volts, and for purposes of measurement shall be 110 volts.

3. The city shall give to the company permission to sell its power in the corporate limits for all commercial purposes, including electric lighting, power to street lamps and electric wires for that purpose.

4. Where the city constructs underground conduits for the wires of the company, it shall agree to rent space at an annual charge or rental equal to nine per centum (9 per cent.) of the cost of such part of said conduits as the company may occupy and use.

5. The company will supply the said continuous power to the city at one cent and a quarter (1 1/4) per 1,000 Watt hours, the minimum power to be supplied to be not less than 100 horse power. Power used by the city to be paid for monthly.

6. The city shall at any time find that the company's prices are detrimental to the interests of the city, it may reduce the price at which the company shall thereafter be permitted to sell its power to the city, at rates not less than two cents (2c) per 1,000 Watt hours for continuous power.

**Discount Sheet—For Power.**

On monthly accounts, as follows, for prompt payment before the 10th of the month:

Per Cent.	Per Cent.
1 to 10, discount .....	5
10 to 20, discount .....	10
20 to 30, discount .....	15
30 to 40, discount .....	20
40 to 50, discount .....	25
50 to 75, discount .....	30
75 to 100, discount .....	35
100 to 200, discount .....	40
200 to 300, discount .....	45
300 to 500 and over .....	50

7. The company agrees to sell to the city the power at which it sells to other customers, or customers, should the rate at any time be less than quoted, and the city shall charge for the same.

8. Should the city corporation at any time desire to obtain and sell power for private lighting and other commercial purposes, the company will be considered as the only one required at the price of two cents (2c.) per 1,000 Watt hours, less discounts as above.

9. The city shall have the right to contract at any time to power not otherwise sold or contracted at time of application for such continuous power.

10. The city shall lease to the company space on its existing pole lines in any practicable form, and at the same a fair amount of pay a fair proportionate share of the cost of lines, as determined by the city engineer. The company may erect poles of such character and description at such places as shall be approved by the city. The company, when required, after five days from date of contract, shall remove from the poles and place them in conduits. The city shall have the right to transfer to other customers and take over all said poles upon giving twelve months' notice of intention to do so, and shall fix the price of same shall be ascertained upon the value of poles (as such) at the time, plus the cost of erecting same, less the amount for depreciation, with a premium upon said value as follows:

25 per cent. if poles are acquired before 1st January, 1907; 15 per cent. if acquired after said last mentioned date and before 1st January, 1910; 10 per cent. if acquired after 1st January, 1910.

11. The city may require the company to permit the use of its poles, by the city or by any other company (where practicable) for supporting wires, for transmitting electricity for light, or power. The proper rental for such use in case of failure to agree, shall be fixed by arbitration.

12. The franchise is granted with the understanding and upon condition that coincident with its acceptance the city shall enter into a contract for design and transfer to said company all its right to develop and utilize water power upon the Assiniboine river, as granted under special Act of the Dominion parliament and the legislature of Manitoba, and the amendments thereto, and that the city shall secure any further legislation which may be necessary to validating the transfer of the above mentioned privilege; and the construction of a canal connecting the Assiniboine river and Lake Manitoba and any other matters being the subject of this tender and agreement; and the transfer to contain provision for the reversion of the franchise to the city, if the company shall not have ex-

would only flood the adjacent territory.

In reference to the foregoing Ald. McCarthy took the ground that while they were dealing with the power question they might as well look ahead and for the foundation of a supply of say 3,000 horse-power, which he felt sure would be absorbed 5 times if the city continued to grow as it has done the last 20 years. If they took the Assiniboine scheme, which would at the outset be estimated to cost \$1,000,000, it will effectually block the way for a larger supply sufficient to meet any demand that might arise.

Alderman Harvey felt confident that the Assiniboine would give the city an adequate supply. If he had his way he would not deal with any proposition but proceed to develop their own power. Mr. Harvey was very emphatic upon this point, and said the matter should be submitted to the ratepayers, and if they refused to vote the funds necessary to, or sanction the issuance of city's guarantees, then it would be better to take up some of these propositions.

On motion of Ald. McCarthy the city clerk was instructed to write the city solicitor to report on the position the city was in regarding the Assiniboine power. The committee will meet again to further deal with this matter on Saturday morning next.

pany promoters, he thought that the money invested had gone back to England, but confidence restored, it would come in millions and all he thought the banks were the proper agents to bring it. Continuing, Mr. Gillespie said: "I have never been out of my home all the time I have been in Canada. I am an ardent admirer of Mr. Chamberlain and all I have to say is now I would like to see Mr. Chamberlain's name has been hailed with applause, and I here and now would like to see Mr. Chamberlain's approval or otherwise to the course the congress has adopted on Imperial questions." Mr. Chamberlain, president of the H. T. Lockyer, manager of the Hudson's Bay company, and all president of the Board of Trade, presided at the banquet.

**C. N. R. GRAIN CIRCULAR.**

The following circular supplementary to the Canadian Northern grain tariff affecting elevating and storage rates and including insurance against loss by fire has just been issued:

1. The following (including 15-day storage and insurance against loss by fire) per bushel, 3-cent. Storage for each additional 15 days, 1-cent. Insurance against loss by fire, per bushel, 3-cent. No claim in case of loss by fire to be made until September 1st, 1903. Superadded elevating and storage rates for the Empire of tariff No. 100, dated February 1st, 1902. Orders for shipment must be in writing and accompanied by the original shipping receipt or warehouse receipt covering quantity of grain ordered out of elevator.

2. All grain before being received into the elevator will be inspected by a Dominion Government official grain inspector, and if found to be unfit for warehousing, when taken into the elevator will be weighed by a Dominion Government official weigher and then placed in bins with other grain of similar kind and grade.

3. The weighing and inspection fees will continue to be charged in addition to the elevating and storage charges. The elevator company does not assume any responsibility for loss or damage by heat, or the act of God, the grain being received and warehoused, and insured by the rail, solely at the risk of the owner.

4. In the event of the grain showing signs of heating, or becoming so deteriorated, may order the grain to be re-elevated to prevent deterioration, in which case the company will assume any responsibility for loss or damage by heat, or the act of God, the grain being received and warehoused, and insured by the rail, solely at the risk of the owner.

5. In the event of a transfer of grain out of condition or becoming so from the elevator in which it is stored, or elevator at the terminal, equipped with special machinery for the handling of unsound grain, the trans-shipment and transfer shall be made at the expense and risk of the owner.

6. The weight of grain will be based on payment of freight, inspection and weighing charges for all grain when received in the elevator, and will be paid by the owner. No transfer of such receipts will be recognized by the company, unless made, unless upon endorsement thereof and on presentation of the same to be cancelled.

7. All charges for freight, inspection, weighing, storage, etc., must be paid before shipment.

**GRAIN SHIPMENTS FROM LAKE PORTS.**

The following statement has been prepared by the Dominion Government and by vessels from Port William and Port Arthur, and their destination from August 1st to the 31st of the month of August in 1902 and 1903:

1902.	Canadian Foreign vessels.
Owen Sound .....	4,676,720
Midlands .....	1,467,120
Drews Harbor .....	1,147,776
Collingwood .....	77,776
Sarnia .....	567,137
Kingston .....	1,900,000
Goderich .....	1,288,776
Port Huron .....	3,677,776
Port Arthur .....	803,776
Total .....	13,880,560 4,877,015

1903.	Canadian Foreign vessels.
Owen Sound .....	453,976
Drews Harbor .....	1,147,776
Midlands .....	877,984
Collingwood .....	77,776
Sarnia .....	288,000
Kingston .....	1,201,360
Goderich .....	2,627,680
Port Huron .....	4,834,560
Port Arthur .....	87,812 324,848
Total .....	11,890,976 6,167,872

The total quantity of wheat shipped in 1902 was 13,880,560 bushels; in 1903, 11,890,976 bushels; barley 1,017,760 bushels; oats 81,062 bushels; and other cereals 2,867,872 bushels.

**Western Farm Homes—Residence of John Begg, Arcola, Assa.**

**CHAMBERS OF COMMERCE DELEGATES RECEIVED.**

The banquet last week to the brilliant success. Among the prominent speakers was General Laurier, one of the fast thinking ranks of the Old Guard contemporaneous with the Fathers of Confederation. General Laurier gave it as his opinion that the Dominion of Canada should be fought out on the Pacific. Mr. Charles Hibbert Tupper proposed the toast of "Empire and Progress." He spoke in speech. He spoke chiefly on the imperial question. He said the colonies were the guests, dwell on the necessity of improving the means for inter-communication, he thought unless this could be done the country would progress faster than when the Indians cruelly made slaves of the Kootenays to make bullets with. Among other prominent speakers was E. J. Gieseler, president of the British Chamber of Commerce. He spoke of the problem of peopling the colonies and referred to the fact that Great Britain for Great Britain for the United States. He said that Great Britain should take all the food products of the Dominion, Canada now only supplied one-fifth of what Great Britain consumed. He thought that Great Britain should contract with Canada for from three to five years to supply all her food products she could to Britain. Britain now takes nearly all her supply of cheese, some 20,000,000 pounds out of a total of 250,000,000. Referring to British investments in Canada through Com-

missed at Vancouver was General Laurier, one of the fast thinking ranks of the Old Guard contemporaneous with the Fathers of Confederation. General Laurier gave it as his opinion that the Dominion of Canada should be fought out on the Pacific. Mr. Charles Hibbert Tupper proposed the toast of "Empire and Progress." He spoke in speech. He spoke chiefly on the imperial question. He said the colonies were the guests, dwell on the necessity of improving the means for inter-communication, he thought unless this could be done the country would progress faster than when the Indians cruelly made slaves of the Kootenays to make bullets with. Among other prominent speakers was E. J. Gieseler, president of the British Chamber of Commerce. He spoke of the problem of peopling the colonies and referred to the fact that Great Britain for Great Britain for the United States. He said that Great Britain should take all the food products of the Dominion, Canada now only supplied one-fifth of what Great Britain consumed. He thought that Great Britain should contract with Canada for from three to five years to supply all her food products she could to Britain. Britain now takes nearly all her supply of cheese, some 20,000,000 pounds out of a total of 250,000,000. Referring to British investments in Canada through Com-

missed at Vancouver was General Laurier, one of the fast thinking ranks of the Old Guard contemporaneous with the Fathers of Confederation. General Laurier gave it as his opinion that the Dominion of Canada should be fought out on the Pacific. Mr. Charles Hibbert Tupper proposed the toast of "Empire and Progress." He spoke in speech. He spoke chiefly on the imperial question. He said the colonies were the guests, dwell on the necessity of improving the means for inter-communication, he thought unless this could be done the country would progress faster than when the Indians cruelly made slaves of the Kootenays to make bullets with. Among other prominent speakers was E. J. Gieseler, president of the British Chamber of Commerce. He spoke of the problem of peopling the colonies and referred to the fact that Great Britain for Great Britain for the United States. He said that Great Britain should take all the food products of the Dominion, Canada now only supplied one-fifth of what Great Britain consumed. He thought that Great Britain should contract with Canada for from three to five years to supply all her food products she could to Britain. Britain now takes nearly all her supply of cheese, some 20,000,000 pounds out of a total of 250,000,000. Referring to British investments in Canada through Com-

missed at Vancouver was General Laurier, one of the fast thinking ranks of the Old Guard contemporaneous with the Fathers of Confederation. General Laurier gave it as his opinion that the Dominion of Canada should be fought out on the Pacific. Mr. Charles Hibbert Tupper proposed the toast of "Empire and Progress." He spoke in speech. He spoke chiefly on the imperial question. He said the colonies were the guests, dwell on the necessity of improving the means for inter-communication, he thought unless this could be done the country would progress faster than when the Indians cruelly made slaves of the Kootenays to make bullets with. Among other prominent speakers was E. J. Gieseler, president of the British Chamber of Commerce. He spoke of the problem of peopling the colonies and referred to the fact that Great Britain for Great Britain for the United States. He said that Great Britain should take all the food products of the Dominion, Canada now only supplied one-fifth of what Great Britain consumed. He thought that Great Britain should contract with Canada for from three to five years to supply all her food products she could to Britain. Britain now takes nearly all her supply of cheese, some 20,000,000 pounds out of a total of 250,000,000. Referring to British investments in Canada through Com-

missed at Vancouver was General Laurier, one of the fast thinking ranks of the Old Guard contemporaneous with the Fathers of Confederation. General Laurier gave it as his opinion that the Dominion of Canada should be fought out on the Pacific. Mr. Charles Hibbert Tupper proposed the toast of "Empire and Progress." He spoke in speech. He spoke chiefly on the imperial question. He said the colonies were the guests, dwell on the necessity of improving the means for inter-communication, he thought unless this could be done the country would progress faster than when the Indians cruelly made slaves of the Kootenays to make bullets with. Among other prominent speakers was E. J. Gieseler, president of the British Chamber of Commerce. He spoke of the problem of peopling the colonies and referred to the fact that Great Britain for Great Britain for the United States. He said that Great Britain should take all the food products of the Dominion, Canada now only supplied one-fifth of what Great Britain consumed. He thought that Great Britain should contract with Canada for from three to five years to supply all her food products she could to Britain. Britain now takes nearly all her supply of cheese, some 20,000,000 pounds out of a total of 250,000,000. Referring to British investments in Canada through Com-

## SWELL SUITS

Good ones at all prices. Some extra qualities that come high but are worth more than prices quoted. Our Spring range now on the road. Examine it. The kind any gentlemen can wear.

**DONALD FRASER & CO.**  
Manufacturers of Fine Clothing  
**WHOLESALE**  
WINNIPEG—126 Princess Street.  
MONTREAL—502 St. Paul Street.

## The Stuart Machinery Co. Ltd.

SUCCESSORS TO  
The Stuart-Arbutnot Machinery Co., Limited  
704-706 MAIN STREET, WINNIPEG

## MACHINERY

Flour Mill Machinery Repairs and Supplies.  
Elevator Machinery Repairs and Supplies.

## HOWE GASOLINE ENGINES

## GRAIN CLEANING MACHINERY

RECEIVING SEPARATORS  
A LARGE STOCK OF "EUREKA" CLEANERS  
Also, ONE No. 7 "MONITOR" CLEANER at a bargain.

## The Manitoba Iron Works, Limited

WINNIPEG, MAN.  
Office & Works, 901 to 907 Logan Ave. West.

**ELEVATOR OWNERS! Your buyer requires**

## The Sheldon Pinch Bar



With compound lever. The handle is made of malleable iron, toe and heel plates steel, interchangeable, never slips, works under any style of brake.

**WATEROUS ENGINE WORKS CO., WINNIPEG MAN.**

## United Fruit & Produce Co. LIMITED.

**FANCY ONTARIO TOMATOES**

75 cents per basket on arrival.

**FANCY APPLES**  
\$4.50 per bbl.

WHOLESALE.

245 Main Street. Winnipeg.

### PLEASE NOTIFY.

Subscribers to The Commercial are requested to notify the office of any irregularity in the receipt of their paper.

## Pearl Necklets

Owing to the increased demand for Pearl Necklets, we have bought very largely, and are now showing a very complete line at all prices in strands from one to twelve, and in several qualities.

Prices quoted on application.

**D. R. DINGWALL, Ltd.**

Wholesale Jewelers.

624 and 624 1/2 Main St. Sign Street Clock.



WAREHOUSES:

TORONTO AND MONTREAL

OFFICES: WINNIPEG, VANCOUVER, QUEBEC, HALIFAX

## LADY VERA 5 Gore Cheviot Skirts

Cut with 10-inch Flare, hem trimmed with 7 rows of stitching, in Oxford Black and Navy. Can be retailed at \$2.00.

REPRESENTATIVES, MANITOBA, NORTHWEST TERRITORIES AND BRITISH COLUMBIA:

T. H. WARDELL, F. H. DUNHAM  
M. A. DAWSON, JOHN LEMON  
SANFORD BLOCK, WINNIPEG

G. F. WILLIAMS  
VANCOUVER

## ERNEST S. HARRISON CO. LTD. Electrical Engineers

SUPPLIES AND CONSTRUCTION.

Repairs of All Kinds.  
PORTAGE AVE. WINNIPEG.

THE  
Straight **B. & C.** Front  
LONG HIP CORSETS

No Brass Eyelets



Just a Loop Lacer

Wholesale Dry Goods Dealers. Can supply you, or write to—

**BRUSH & CO., TORONTO**

J. J. W. Deuchar, F.F.A., F.I.A., General Manager and Actuary of the Norwich Union Life Assurance Company, speaking of Investments says—

"It may serve to indicate the great importance of obtaining a good return on the investments, if it is realized that one per cent. of increased interest on the funds of a company will, on the average, have as great an effect as a saving in expenditure equal to 10 per cent. on the premium income, while, if an office could count on realizing 5 per cent. interest in place of 3, it might reduce its premiums some 20 per cent., or double its bonuses."

Mr. Deuchar does not name The Great-West Life; but the above statement exactly describes the happy position of its policy-holders.



**RETAIL MERCHANTS**  
IN MANITOBA AND N. W. T.

**Benson's Enamel Starch**

REDUCED FROM  
**3 00** Per Box of 40 lbs. TO **2 50** Per Box of 6 1/2 lbs. Package

FOR SALE BY ALL WINNIPEG AND WESTERN WHOLESALE GROCERS.

With Your Next Order have shipped a box of **BENSON'S ENAMEL**

**E. NICHOLSON, WHOLESALE AGENT, WINNIPEG**

**SELL ONLY THE BEST**

All Consumers substantiate our claim that



For Sale by all Winnipeg and Western Wholesale Grocers

Are the Best in Canada

**E. NICHOLSON, WHOLESALE AGENT, WINNIPEG**

**THE W. E. SANFORD MF'G CO., LTD.**  
HAMILTON, ONT.

Wholesale Clothing Manufacturers

Offices and sample rooms in the Sanford block, Winnipeg, corner of Princess and Bannatyne streets, where a complete set of samples can always be seen.  
Western representative—W. Dunlop, Geo. Shaw, A. McAllister.

**Lalonde, Milord & Co.**

WINNIPEG, MAN.

Manufacturers of  
**SASH DOORS  
SHOW CASES  
STORE AND BAR  
FITTINGS, Etc.**

Offices and Mills, corner of King and Sutherland.

WE WANT.

**Seneca Root**

Don't sell before first wiring or writing for prices.

Largest exporters of Seneca in the West. Also dealers in—

Hides, Wool, Raw Furs, Etc.

Get your name on our mailing list and keep posted.

**FRANK LIGHTCAP**

Box 48, WINNIPEG, MAN.

**T & B** PLUG AND CUT TOBACCO

Try the new fours. They are giving entire satisfaction. Pays the retailer a handsome profit.

**THE GEO. E. TUCKETT & SON CO., LTD**  
HAMILTON.

TEES & FERSE, Agents, Winnipeg.

Highest Grade British Make

"THE PREMIER" Waterproofs are guaranteed not to harden and to be thoroughly WATERPROOF.

**"PREMIER"**  
WATERPROOF AND SHOWERPROOF GARMENTS  
Standard of the World. Established 1873.

Prompt attention to Mail Orders.

Showrooms: 216 Portage Ave.  
Trust and Loan Building  
WINNIPEG.

**Just a Few Staples**

Order Quick to Ensure Prompt Delivery.

Fruit Jars and Rings.  
Butter Tubs and Butter Ware.  
Fly Pads and Paper.  
Ice Cream Freezers.  
Boss Washers and Wringers.

**WALTER WOODS & CO.**  
WHOLESALE

Brooms, Brushes, Baskets, Wooden Ware, Store Fixtures, etc.  
HAMILTON and WINNIPEG.

**RAT PORTAGE LUMBER COMPANY**

LIMITED

MANUFACTURERS OF . . .

**LUMBER,  
LATH, SHINGLES,  
SASH,  
DOORS**

AND ALL KINDS OF WOODWORK

Head Office and Mills at RAT-PORTAGE, ONT.

WINNIPEG OFFICE, Room 53 Merchants Bank Building.



We are now in a position to supply any quantity of fresh Lake Winnipeg Fish and British Columbia Halibut and Salmon.

All Fish, Game, Poultry, etc., in season.

Send in your wild pigeons.

**W. J. GUEST** Wholesale Fish, Game, Poultry, Etc.  
600 Main St., Winnipeg.





**OUR**  
**Montana**  
**Crab**  
**Apples**

are being shipped this week. Will start filling orders about 20th. Send your orders along. Season is short—supply light. Per case

**\$2.25**

No Reduction in Lots.

THE **MACPHERSON FRUIT CO.**  
LIMITED.  
493 Main St., Winnipeg

Get Prices on  
**Air Tight Heaters**  
**Threshers' Supplies**

Headquarters at  
**MARSHALL-WELLS CO.**  
WHOLESALE HARDWARE  
WINNIPEG

Good Judges Always Ask for  
**WESTERN STAR BRAND**  
**Hams, Bacon**  
**Lard**

Put Up by  
**The Western Packing Co.**  
OF CANADA, LTD.  
Abattoir and Offices: Alexander Ave. West.  
WINNIPEG, MAN.

**COAL**

**Hard and Soft Coal**  
**Smithing Coal**

Car lot shipments to all C. P. R. and C. N. R. points.

**D. E. ADAMS**  
Office: 193 Lombard Street.

**Tin Plates** "ALLAWAY'S" and "CANADA CROWN"—Genuine Charcoal  
**Canada Plates** "DOMINION CROWN"—All Polished  
**Terne Plates** "DEAN"—Charcoal

All standard brands, reliable quality, mod. rate price. Accept no substitutes.

**A. C. LESLIE & CO.,** Montreal.  
E. H. BISSETT, Agent, Winnipeg.

**FRUIT**

**NOW IN STOCK**

Peaches, Plums, Pears, Apples, New Potatoes, Melons, Oranges, Lemons, Bananas, Tomatoes, Blueberries.

**THE IMPERIAL FRUIT & PRODUCE CO. LTD.**  
WINNIPEG, MAN.

**BOOTS AND SHOES** **SPRING AND SORTING**

Our 5 travellers are now out for Spring business and will call on you in due course. We strongly advise you to wait as we are showing the best values in Boots and Shoes ever carried. Remember we carry the largest stock West of Montreal and can fill your Sorting Orders at once.

87 Princess St.  
Winnipeg.

**The Kilgour Rimer Co. Ltd.**

**Gowans, Kent & Co.**

Importers and Wholesale Dealers in all kinds of

**China**  
**Glass and**  
**Earthenware**

358 Main Street.  
WINNIPEG.

SHIP YOUR  
**FURS AND SENECA**  
HIDES AND DEERSKINS

Special prices for fine winter-caught lots of furs. We are paying 50¢ lb. delivered in Minneapolis, for good, clean, thoroughly dry seneca; 60¢ for poor. Freight Winnipeg to Minneapolis \$1.15 per cwt.

**McMILLAN FUR AND WOOL COMPANY**  
200-212 FIRST AVE., NORTH, MINNEAPOLIS, MINN.  
Write for circulars.

Parties requiring heating apparatus should look into the merits of the



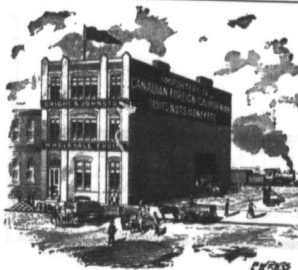
**Kelsey Warm**  
**Air Generator**

THE HEAT MAKER AND FUEL SAVER FOR HARD COAL.

Costs more than the ordinary Hot Air Furnace but GIVES RESULTS.

Booklets and all particulars from:

**ANDERSON & THOMAS** 338 Main Street  
Winnipeg  
Or Manufacturers' Branch Office  
**JAMES SMART MFG. CO. LIMITED.** 214 Princess Street, Winnipeg.



**WASHINGTON**  
**PLUMS & PEARS**  
**FREESTONE**  
**PEACHES**  
**ONTARIO BASKET**  
**TOMATOES**  
**PEARS, & RAPES**  
**BBL. APPLES**  
**BOXES MONTANA CRABS**

**Bright & Johnston**  
WINNIPEG.

**Senega Root**

**WANTED**

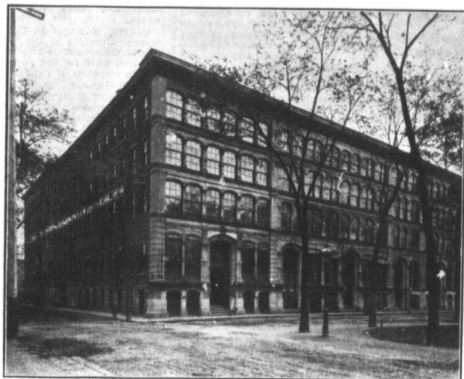
We pay highest market prices and can use any quantity. Send us a trial shipment. If you have any hides to offer write or wire us.

**North West Hide Company**  
BOX 615 378 RUPERT STREET





# THE INCREASING DEMAND FOR ONE REAS



MONTREAL FACTORY.  
Exclusively for Manufacturing Fine Shoes.

We have acquired the  
Seguin Lalim

## Our Trad



---

TWO FACTORIES NOW  
RUNNING  
Manufacturing Fine Shoes in Montreal  
and  
Heavy Staples in St. Hyacinthe.

---

# The Ames Holder

COR. PRINCESS AND McDERMOT STS.

# END FOR OUR SHOES IS ASON WHY



actory formerly occupied by  
o. at St. Hyacinthe

alers

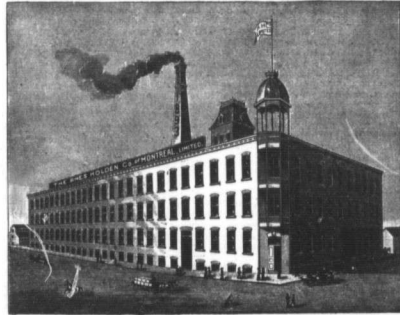
Are now on the Road for

**Spring 1904**

ing the full range from both  
ories

Wherchants to see our New Samples  
acing any orders for Spring 1904.

mprise all lines from Heavy working  
the Finest made shoes.



ST. HYACINTHE FACTORY.

Exclusively for Manufacturing Staple Boots and Shoes.

---

---

BY SEPARATING THE TWO  
LINES

We are able to produce Better Made goods  
than where all kinds are manufactured  
in the same Factory.

---

---

# Co. of Montreal Ltd.

TS, - - WINNIPEG, MANITOBA

## TORONTO WHOLESALE TRADE.

(Special to The Commercial.)

**Dry Goods**—Sorting trade is active. Cottons are unsettled, owing to circuitous from one mill advising caution in buying. Advance in price by two rival mills and predicting a decrease in supplies is reasonable.

**Hardware**—Good very firm. Grocers—Prices generally are firm.

**Produce**—Fair. Corn, 10c to 11c; sugars are steady at a decline by 2c; the refineries, made Tuesday. Refined is dearer. New 10c to 11c; 11c to 11.75 for talls and 11.85 to 12.25 for whites. Vegetables are steady. Corn, No. 1 to 11.00; No. 2, 10.50 to 11.50; peas, 10c to 11.40.

## TORONTO GRAIN AND PRODUCE.

(Special to The Commercial.)

Toronto, Sept. 19.  
Wheat deliveries are very light and prices are higher. New 1 hard is worth 93c; 1 No. 2 and 2 No. 3, 90c; shorts are 7c dearer. Offerings of eggs are smaller. Butter is 1c higher. Middle freight is 7c for red and white, 7c; east; Manitoba, No. 1 hard, 98c; No. 2 north, 97c; 3 northern, 94c; lake ports, grinding, 2 northern, 94c; 2 southern, 93c; 3 northern, 92c. Dats—2 white, 30c; middle freights, 30c; No. 3, 1c is quoted at 45c, east or middle freight.

Flour—30 per cent Ontario patents, \$2.05 to \$2.07 for buyers bags, middle freight; choice brands are held 15c to 16c; higher. Manitoba flour, \$1.90 to \$1.95; 10c to 11c for strong bakers, in bulk; 10c to 11c bags included, on track, Toronto.

Milled—Shorts, 818 per ton, and 10c per 100 lbs. Manitoba feed, \$21 per ton; shorts are 817 for bran, sacks included, Toronto.

Barley—\$2.75 for cars and bags; 2 No. 1 and 2 No. 2 for cars, 2.60; and \$3.00 for wood for cars, lots, Toronto.

41c—Car lots on track, \$9.00 per ton for No. 1 timothy.

Eggs—Case lots, new laid, 16c per dozen.

Butter—Dairy rolls, 17 to 17½c; tubs and pails, 10 to 13½c; creamery, 12 to 13c; 18 to 18½c; prints, 20 to 20½c.

Cheese—11 to 11½c for finest. 10c to 10½c for No. 2; 9c for cows; No. 1 steers, 9c; calves, 9c; No. 2, 8c; and 7c for No. 2; shearings, 50c each; lambkins, 50c each; talow, 5c for rendered.

Washed—Hides, 10½ to 17½c; unwashed, 9½ to 10½c.

Beans—41 to 43c per bushel for lots of hand-picked, and 41.00 to 41.50 for unpacked.

Apples—Evaporated, 6 to 6½; dried, 3½ to 4c; new apple, choice stock, per barrel, \$1 to \$1.25.

Maple Syrup—11.20 per imperial gallon, in bulk or gallon tins.

Honey—4½ to 4½c per gallon in bulk; in frames, \$1.00 to \$1.60.

Potatoes—5c per bushel for choice Ontario stock in carlots.

Poultry—Prices are steady at 90 to 75c per pair for spring chickens; turkeys, 12c to 13c per pound.

## MONTREAL GRAIN AND PRODUCE.

(Special to The Commercial.)

Montreal, Sept. 19.  
Butter is in fair demand and firm. Cattle—Orders are active, asking prices. Cheese is firm at the recent advance. Hogs are 25c lower.

Butter—Creamery, 18 to 19c; crop, 37 to 37½c; ext store, new, No. 2, 2½c to 2½c.

Barley—No. 3, 5½c afant.

Flour—Manitoba patent, \$4.50 to \$4.70; Manitoba strong bakers, \$4.20 to \$4.30; No. 1, 3½c; No. 2, 3½c to 35.50; winter patents, \$3.90 to \$4.10.

Wheat—\$3.75 to \$3.80 per barrel, and \$1.80 for 100 lbs.

Feed—Manitoba bran, bags included, \$10.00 to \$10.50; Ontario bran, in bulk, \$10 to \$10.50; shorts \$10.00 to \$10.50.

Hay—No. 2, \$16.50 to \$10 per ton; Quebec—Finest Ontario, 11½c; 2nd, Quebec, 11½c; Townships, 11½c.

Butter—Creamery, 18 to 19c; crop, 37 to 37½c; ext store, new, No. 2, 2½c to 2½c.

Barley—No. 3, 5½c afant.

Flour—Manitoba patent, \$4.50 to \$4.70; Manitoba strong bakers, \$4.20 to \$4.30; No. 1, 3½c; No. 2, 3½c to 35.50; winter patents, \$3.90 to \$4.10.

Wheat—\$3.75 to \$3.80 per barrel, and \$1.80 for 100 lbs.

Feed—Manitoba bran, bags included, \$10.00 to \$10.50; Ontario bran, in bulk, \$10 to \$10.50; shorts \$10.00 to \$10.50.

Hay—No. 2, \$16.50 to \$10 per ton; Quebec—Finest Ontario, 11½c; 2nd, Quebec, 11½c; Townships, 11½c.

Butter—Creamery, 18 to 19c; crop, 37 to 37½c; ext store, new, No. 2, 2½c to 2½c.

Barley—No. 3, 5½c afant.

Flour—Manitoba patent, \$4.50 to \$4.70; Manitoba strong bakers, \$4.20 to \$4.30; No. 1, 3½c; No. 2, 3½c to 35.50; winter patents, \$3.90 to \$4.10.

Wheat—\$3.75 to \$3.80 per barrel, and \$1.80 for 100 lbs.

Feed—Manitoba bran, bags included, \$10.00 to \$10.50; Ontario bran, in bulk, \$10 to \$10.50; shorts \$10.00 to \$10.50.

Hay—No. 2, \$16.50 to \$10 per ton; Quebec—Finest Ontario, 11½c; 2nd, Quebec, 11½c; Townships, 11½c.

Butter—Creamery, 18 to 19c; crop, 37 to 37½c; ext store, new, No. 2, 2½c to 2½c.

Barley—No. 3, 5½c afant.

Flour—Manitoba patent, \$4.50 to \$4.70; Manitoba strong bakers, \$4.20 to \$4.30; No. 1, 3½c; No. 2, 3½c to 35.50; winter patents, \$3.90 to \$4.10.

Wheat—\$3.75 to \$3.80 per barrel, and \$1.80 for 100 lbs.

Feed—Manitoba bran, bags included, \$10.00 to \$10.50; Ontario bran, in bulk, \$10 to \$10.50; shorts \$10.00 to \$10.50.

Hay—No. 2, \$16.50 to \$10 per ton; Quebec—Finest Ontario, 11½c; 2nd, Quebec, 11½c; Townships, 11½c.

Butter—Creamery, 18 to 19c; crop, 37 to 37½c; ext store, new, No. 2, 2½c to 2½c.

Barley—No. 3, 5½c afant.

Flour—Manitoba patent, \$4.50 to \$4.70; Manitoba strong bakers, \$4.20 to \$4.30; No. 1, 3½c; No. 2, 3½c to 35.50; winter patents, \$3.90 to \$4.10.

Wheat—\$3.75 to \$3.80 per barrel, and \$1.80 for 100 lbs.

Feed—Manitoba bran, bags included, \$10.00 to \$10.50; Ontario bran, in bulk, \$10 to \$10.50; shorts \$10.00 to \$10.50.

Hay—No. 2, \$16.50 to \$10 per ton; Quebec—Finest Ontario, 11½c; 2nd, Quebec, 11½c; Townships, 11½c.

Butter—Creamery, 18 to 19c; crop, 37 to 37½c; ext store, new, No. 2, 2½c to 2½c.

Barley—No. 3, 5½c afant.

Flour—Manitoba patent, \$4.50 to \$4.70; Manitoba strong bakers, \$4.20 to \$4.30; No. 1, 3½c; No. 2, 3½c to 35.50; winter patents, \$3.90 to \$4.10.

Wheat—\$3.75 to \$3.80 per barrel, and \$1.80 for 100 lbs.

Feed—Manitoba bran, bags included, \$10.00 to \$10.50; Ontario bran, in bulk, \$10 to \$10.50; shorts \$10.00 to \$10.50.

Hay—No. 2, \$16.50 to \$10 per ton; Quebec—Finest Ontario, 11½c; 2nd, Quebec, 11½c; Townships, 11½c.

Butter—Creamery, 18 to 19c; crop, 37 to 37½c; ext store, new, No. 2, 2½c to 2½c.

Barley—No. 3, 5½c afant.

Flour—Manitoba patent, \$4.50 to \$4.70; Manitoba strong bakers, \$4.20 to \$4.30; No. 1, 3½c; No. 2, 3½c to 35.50; winter patents, \$3.90 to \$4.10.

Wheat—\$3.75 to \$3.80 per barrel, and \$1.80 for 100 lbs.

Feed—Manitoba bran, bags included, \$10.00 to \$10.50; Ontario bran, in bulk, \$10 to \$10.50; shorts \$10.00 to \$10.50.

Hay—No. 2, \$16.50 to \$10 per ton; Quebec—Finest Ontario, 11½c; 2nd, Quebec, 11½c; Townships, 11½c.

Butter—Creamery, 18 to 19c; crop, 37 to 37½c; ext store, new, No. 2, 2½c to 2½c.

Barley—No. 3, 5½c afant.

Flour—Manitoba patent, \$4.50 to \$4.70; Manitoba strong bakers, \$4.20 to \$4.30; No. 1, 3½c; No. 2, 3½c to 35.50; winter patents, \$3.90 to \$4.10.

Wheat—\$3.75 to \$3.80 per barrel, and \$1.80 for 100 lbs.

Feed—Manitoba bran, bags included, \$10.00 to \$10.50; Ontario bran, in bulk, \$10 to \$10.50; shorts \$10.00 to \$10.50.

Hay—No. 2, \$16.50 to \$10 per ton; Quebec—Finest Ontario, 11½c; 2nd, Quebec, 11½c; Townships, 11½c.

Butter—Creamery, 18 to 19c; crop, 37 to 37½c; ext store, new, No. 2, 2½c to 2½c.

Barley—No. 3, 5½c afant.

Flour—Manitoba patent, \$4.50 to \$4.70; Manitoba strong bakers, \$4.20 to \$4.30; No. 1, 3½c; No. 2, 3½c to 35.50; winter patents, \$3.90 to \$4.10.

Wheat—\$3.75 to \$3.80 per barrel, and \$1.80 for 100 lbs.

Feed—Manitoba bran, bags included, \$10.00 to \$10.50; Ontario bran, in bulk, \$10 to \$10.50; shorts \$10.00 to \$10.50.

Hay—No. 2, \$16.50 to \$10 per ton; Quebec—Finest Ontario, 11½c; 2nd, Quebec, 11½c; Townships, 11½c.

Butter—Creamery, 18 to 19c; crop, 37 to 37½c; ext store, new, No. 2, 2½c to 2½c.

Barley—No. 3, 5½c afant.

Flour—Manitoba patent, \$4.50 to \$4.70; Manitoba strong bakers, \$4.20 to \$4.30; No. 1, 3½c; No. 2, 3½c to 35.50; winter patents, \$3.90 to \$4.10.

Wheat—\$3.75 to \$3.80 per barrel, and \$1.80 for 100 lbs.

Feed—Manitoba bran, bags included, \$10.00 to \$10.50; Ontario bran, in bulk, \$10 to \$10.50; shorts \$10.00 to \$10.50.

Hay—No. 2, \$16.50 to \$10 per ton; Quebec—Finest Ontario, 11½c; 2nd, Quebec, 11½c; Townships, 11½c.

Butter—Creamery, 18 to 19c; crop, 37 to 37½c; ext store, new, No. 2, 2½c to 2½c.

Barley—No. 3, 5½c afant.

Flour—Manitoba patent, \$4.50 to \$4.70; Manitoba strong bakers, \$4.20 to \$4.30; No. 1, 3½c; No. 2, 3½c to 35.50; winter patents, \$3.90 to \$4.10.

Wheat—\$3.75 to \$3.80 per barrel, and \$1.80 for 100 lbs.

Feed—Manitoba bran, bags included, \$10.00 to \$10.50; Ontario bran, in bulk, \$10 to \$10.50; shorts \$10.00 to \$10.50.

Hay—No. 2, \$16.50 to \$10 per ton; Quebec—Finest Ontario, 11½c; 2nd, Quebec, 11½c; Townships, 11½c.

Butter—Creamery, 18 to 19c; crop, 37 to 37½c; ext store, new, No. 2, 2½c to 2½c.

Barley—No. 3, 5½c afant.

Flour—Manitoba patent, \$4.50 to \$4.70; Manitoba strong bakers, \$4.20 to \$4.30; No. 1, 3½c; No. 2, 3½c to 35.50; winter patents, \$3.90 to \$4.10.

Wheat—\$3.75 to \$3.80 per barrel, and \$1.80 for 100 lbs.

Feed—Manitoba bran, bags included, \$10.00 to \$10.50; Ontario bran, in bulk, \$10 to \$10.50; shorts \$10.00 to \$10.50.

Hay—No. 2, \$16.50 to \$10 per ton; Quebec—Finest Ontario, 11½c; 2nd, Quebec, 11½c; Townships, 11½c.

Butter—Creamery, 18 to 19c; crop, 37 to 37½c; ext store, new, No. 2, 2½c to 2½c.

Barley—No. 3, 5½c afant.

Flour—Manitoba patent, \$4.50 to \$4.70; Manitoba strong bakers, \$4.20 to \$4.30; No. 1, 3½c; No. 2, 3½c to 35.50; winter patents, \$3.90 to \$4.10.

Wheat—\$3.75 to \$3.80 per barrel, and \$1.80 for 100 lbs.

Feed—Manitoba bran, bags included, \$10.00 to \$10.50; Ontario bran, in bulk, \$10 to \$10.50; shorts \$10.00 to \$10.50.

Hay—No. 2, \$16.50 to \$10 per ton; Quebec—Finest Ontario, 11½c; 2nd, Quebec, 11½c; Townships, 11½c.

Butter—Creamery, 18 to 19c; crop, 37 to 37½c; ext store, new, No. 2, 2½c to 2½c.

Barley—No. 3, 5½c afant.

Flour—Manitoba patent, \$4.50 to \$4.70; Manitoba strong bakers, \$4.20 to \$4.30; No. 1, 3½c; No. 2, 3½c to 35.50; winter patents, \$3.90 to \$4.10.

Wheat—\$3.75 to \$3.80 per barrel, and \$1.80 for 100 lbs.

Feed—Manitoba bran, bags included, \$10.00 to \$10.50; Ontario bran, in bulk, \$10 to \$10.50; shorts \$10.00 to \$10.50.

Hay—No. 2, \$16.50 to \$10 per ton; Quebec—Finest Ontario, 11½c; 2nd, Quebec, 11½c; Townships, 11½c.

Butter—Creamery, 18 to 19c; crop, 37 to 37½c; ext store, new, No. 2, 2½c to 2½c.

Barley—No. 3, 5½c afant.

Flour—Manitoba patent, \$4.50 to \$4.70; Manitoba strong bakers, \$4.20 to \$4.30; No. 1, 3½c; No. 2, 3½c to 35.50; winter patents, \$3.90 to \$4.10.

Wheat—\$3.75 to \$3.80 per barrel, and \$1.80 for 100 lbs.

Feed—Manitoba bran, bags included, \$10.00 to \$10.50; Ontario bran, in bulk, \$10 to \$10.50; shorts \$10.00 to \$10.50.

Hay—No. 2, \$16.50 to \$10 per ton; Quebec—Finest Ontario, 11½c; 2nd, Quebec, 11½c; Townships, 11½c.

Butter—Creamery, 18 to 19c; crop, 37 to 37½c; ext store, new, No. 2, 2½c to 2½c.

Barley—No. 3, 5½c afant.

Flour—Manitoba patent, \$4.50 to \$4.70; Manitoba strong bakers, \$4.20 to \$4.30; No. 1, 3½c; No. 2, 3½c to 35.50; winter patents, \$3.90 to \$4.10.

Wheat—\$3.75 to \$3.80 per barrel, and \$1.80 for 100 lbs.

Feed—Manitoba bran, bags included, \$10.00 to \$10.50; Ontario bran, in bulk, \$10 to \$10.50; shorts \$10.00 to \$10.50.

Hay—No. 2, \$16.50 to \$10 per ton; Quebec—Finest Ontario, 11½c; 2nd, Quebec, 11½c; Townships, 11½c.

Butter—Creamery, 18 to 19c; crop, 37 to 37½c; ext store, new, No. 2, 2½c to 2½c.

Barley—No. 3, 5½c afant.

Flour—Manitoba patent, \$4.50 to \$4.70; Manitoba strong bakers, \$4.20 to \$4.30; No. 1, 3½c; No. 2, 3½c to 35.50; winter patents, \$3.90 to \$4.10.

Wheat—\$3.75 to \$3.80 per barrel, and \$1.80 for 100 lbs.

Feed—Manitoba bran, bags included, \$10.00 to \$10.50; Ontario bran, in bulk, \$10 to \$10.50; shorts \$10.00 to \$10.50.

Hay—No. 2, \$16.50 to \$10 per ton; Quebec—Finest Ontario, 11½c; 2nd, Quebec, 11½c; Townships, 11½c.

Butter—Creamery, 18 to 19c; crop, 37 to 37½c; ext store, new, No. 2, 2½c to 2½c.

Barley—No. 3, 5½c afant.

Flour—Manitoba patent, \$4.50 to \$4.70; Manitoba strong bakers, \$4.20 to \$4.30; No. 1, 3½c; No. 2, 3½c to 35.50; winter patents, \$3.90 to \$4.10.

Wheat—\$3.75 to \$3.80 per barrel, and \$1.80 for 100 lbs.

Feed—Manitoba bran, bags included, \$10.00 to \$10.50; Ontario bran, in bulk, \$10 to \$10.50; shorts \$10.00 to \$10.50.

Hay—No. 2, \$16.50 to \$10 per ton; Quebec—Finest Ontario, 11½c; 2nd, Quebec, 11½c; Townships, 11½c.

Butter—Creamery, 18 to 19c; crop, 37 to 37½c; ext store, new, No. 2, 2½c to 2½c.

Barley—No. 3, 5½c afant.

Flour—Manitoba patent, \$4.50 to \$4.70; Manitoba strong bakers, \$4.20 to \$4.30; No. 1, 3½c; No. 2, 3½c to 35.50; winter patents, \$3.90 to \$4.10.

Wheat—\$3.75 to \$3.80 per barrel, and \$1.80 for 100 lbs.

Feed—Manitoba bran, bags included, \$10.00 to \$10.50; Ontario bran, in bulk, \$10 to \$10.50; shorts \$10.00 to \$10.50.

Hay—No. 2, \$16.50 to \$10 per ton; Quebec—Finest Ontario, 11½c; 2nd, Quebec, 11½c; Townships, 11½c.

Butter—Creamery, 18 to 19c; crop, 37 to 37½c; ext store, new, No. 2, 2½c to 2½c.

Barley—No. 3, 5½c afant.

Flour—Manitoba patent, \$4.50 to \$4.70; Manitoba strong bakers, \$4.20 to \$4.30; No. 1, 3½c; No. 2, 3½c to 35.50; winter patents, \$3.90 to \$4.10.

Wheat—\$3.75 to \$3.80 per barrel, and \$1.80 for 100 lbs.

Feed—Manitoba bran, bags included, \$10.00 to \$10.50; Ontario bran, in bulk, \$10 to \$10.50; shorts \$10.00 to \$10.50.

Hay—No. 2, \$16.50 to \$10 per ton; Quebec—Finest Ontario, 11½c; 2nd, Quebec, 11½c; Townships, 11½c.

Butter—Creamery, 18 to 19c; crop, 37 to 37½c; ext store, new, No. 2, 2½c to 2½c.

Barley—No. 3, 5½c afant.

Flour—Manitoba patent, \$4.50 to \$4.70; Manitoba strong bakers, \$4.20 to \$4.30; No. 1, 3½c; No. 2, 3½c to 35.50; winter patents, \$3.90 to \$4.10.

Wheat—\$3.75 to \$3.80 per barrel, and \$1.80 for 100 lbs.

Feed—Manitoba bran, bags included, \$10.00 to \$10.50; Ontario bran, in bulk, \$10 to \$10.50; shorts \$10.00 to \$10.50.

Hay—No. 2, \$16.50 to \$10 per ton; Quebec—Finest Ontario, 11½

**STATISTICAL WHEAT REPORT.**  
**WHEAT IN CANADA.**

Stocks of wheat in Canada at principal points of accumulation are reported as follows:

Location	Bushels
Montreal	14,000
Toronto	1,000
Detroit Harbor, Ont.	2,000
Kingston	20,000
Quebec	50,000
Fort William, Port Arthur and Kenora	100,000
Min	110,000
Winnipeg	100,000
Manitoba elevators	600,000

Total, Sept. 5.....1,822,000  
Total, previous week.....150,000  
Total, a year ago.....1,658,000

**BREADSTREET'S REPORT OF STOCKS.**

Total stocks of wheat in the United States and Canada east of the Rocky Mountains as reported by Breadstreet's, Sept. 5, were 23,833,000 bushels, as against 23,537,000 bushels the previous week.

Total stocks in the United States and Canada a year ago were 23,572,000 bushels, according to Breadstreet's report.

Stocks of wheat at Pacific coast ports on Sept. 1 were 1,754,000 bushels.

**THE VISIBLE SUPPLY.**

The Chicago visible supply statement of wheat in the United States and Canada east of the Rocky Mountains, for the week ending Sept. 12, was 14,932,000 bushels, being an increase of 818,000 bushels for the week. A year ago the visible supply was 14,800 bushels, four years ago, 13,520 bushels, four years ago, 10,900 bushels, five years ago, 10,180,000 bushels.

**STOCKS OF OATS AND CORN.**

The visible supply of oats in the United States and Canada east of the Rocky Mountains is 4,220,000 bushels, compared with 5,214,000 bushels a year ago. The visible supply of corn is 4,525,000 bushels, compared with 1,962,000 bushels a year ago, according to the Chicago statement.

**WORLD'S WHEAT STOCKS.**

Stocks of wheat in America and Europe and abroad for Europe Sept. 12 in each year and Breadstreet's report:

Year	Bushels
1901	70,000,000
1902	78,000,000
1903	115,000,000
1904	120,000,000
1905	118,000,000
1906	82,000,000
1907	64,000,000
1908	108,000,000

**WHEAT MOVEMENTS.**

The following table gives the receipts of wheat at the four principal United States grain wharf wheat markets, from the beginning of the crop movement, Aug. 1, 1903, to date, compared with the same period of last year:

Location	This crop. Last crop.	1903-1904
Minneapolis	1,148,000	1,148,000
Milwaukee	628,528	644,800
Duluth	1,085,242	2,029,114
Chicago	3,660,242	10,526,609
Total	14,522,012	20,868,633

The following table gives the receipts of wheat at the four principal United States grain wharf wheat markets, from the beginning of the crop movement, July 1, 1903, to date, compared with the same period of last year:

Location	This crop. Last crop.	1903-1904
Toledo	2,483,008	4,828,287
St. Louis	1,114,980	1,386,223
Detroit	378,180	1,017,400
Kansas City	1,799,180	10,147,400
Total	30,465,847	32,006,237

**WESTERN GRAIN STOCKS.**

Stocks of wheat at Fort William and Port Arthur on Saturday, Sept. 12, were as follows:

Location	Bushels
Wheat - 1 Hard	56,708
1 Northern	109,707
2 Northern	15,300
3 Northern	18,860
Other grades	14,520
Total	312,533

Capacity, Fort William, 5,700,000

Wheat - Port Arthur. Bushels.

1 Hard	50,000
2 Northern	128,234
3 Northern	8,671
2 Northern	1,479
Other grades	12,975
Total	190,245

Capacity, Port Arthur, 2,000,000

These figures show a total quantity of wheat in store at the United States grain wharf wheat markets of 82,782 bushels. A year ago the total stocks were 28,851 bushels. Receipts of wheat for the week at these terminals were 27,862 bushels and shipments 27,700 bushels.

Stocks of wheat in store at Fort William, Port Arthur, Kenawin, Winnipeg and interior country points are approximately 95,000 bushels, against 45,000 bushels a week ago; 1,070,000 bushels a year ago; 25,000 bushels two years ago; 600 bushels four years ago.

The report of Manitoba wheat stored at Duluth in bond for the week ending Sept. 12 is as follows:

Category	Bushels
Previously reported	none
Shipped during week	none
Balance in store	11,904

**WINNIPEG GRAIN INSPECTION.**

During the week ending Sept. 12 there were inspected at Winnipeg 578 cars of grain, comprising the following:

Grain	Cars
Wheat - 1 Hard	119
1 Northern	26
2 Northern	21
3 Northern	21
Rejected 1	22
Rejected 2	15
No grade	4
Winnipeg	4
Total	379

Outs - No. 1.....2  
No. 2.....2  
No grade.....1  
Barley - 1.....1  
Rejected 2.....1

The total number of cars of grain inspected as above was 378, of which 282 were on the C. P. R. and 96 on the C. N. R. roads.

During the same week a year ago there were inspected 286 cars of grain, of which 282 cars were wheat.

**CHICAGO BOARD PRICES.**

Following are the figures at which the Chicago market closed on each day of the past week:

Grain	Sept. 12	Sept. 11	Sept. 10	Sept. 9	Sept. 8
Wheat - 1 Hard	80 1/2	80 1/2	80 1/2	80 1/2	80 1/2
1 Northern	80 1/2	80 1/2	80 1/2	80 1/2	80 1/2
2 Northern	80 1/2	80 1/2	80 1/2	80 1/2	80 1/2
3 Northern	80 1/2	80 1/2	80 1/2	80 1/2	80 1/2
Rejected 1	80 1/2	80 1/2	80 1/2	80 1/2	80 1/2
Rejected 2	80 1/2	80 1/2	80 1/2	80 1/2	80 1/2
No grade	80 1/2	80 1/2	80 1/2	80 1/2	80 1/2
Winnipeg	80 1/2	80 1/2	80 1/2	80 1/2	80 1/2
Total	80 1/2	80 1/2	80 1/2	80 1/2	80 1/2

Saturday, Sept. 12.....81 1/2  
Monday.....81 1/2  
Tuesday.....81 1/2  
Wednesday.....81 1/2  
Thursday.....81 1/2  
Friday.....81 1/2

Corn - Saturday, Sept. 12.....51 1/2  
Monday.....51 1/2  
Tuesday.....51 1/2  
Wednesday.....51 1/2  
Thursday.....51 1/2  
Friday.....51 1/2

Oats - Saturday, July 12.....24 1/2  
Monday.....24 1/2  
Tuesday.....24 1/2  
Wednesday.....24 1/2  
Thursday.....24 1/2  
Friday.....24 1/2

Flour - Saturday, Sept. 12.....13.50  
Monday.....13.72  
Tuesday.....13.72  
Wednesday.....13.72  
Thursday.....13.72  
Friday.....13.72

Lard - Saturday, Sept. 12.....9.25  
Monday.....9.25  
Tuesday.....9.25  
Wednesday.....9.25  
Thursday.....9.25  
Friday.....9.25

Rib - Saturday, Sept. 12.....8.50  
Monday.....8.50  
Tuesday.....8.50  
Wednesday.....8.50  
Thursday.....8.50  
Friday.....8.50

Wool - Saturday, Sept. 12.....8.50  
Monday.....8.50  
Tuesday.....8.50  
Wednesday.....8.50  
Thursday.....8.50  
Friday.....8.50

Wheat - Saturday, Sept. 12.....85 1/2  
Monday.....85 1/2  
Tuesday.....85 1/2  
Wednesday.....85 1/2  
Thursday.....85 1/2  
Friday.....85 1/2

Wheat - Saturday, Sept. 12.....85 1/2  
Monday.....85 1/2  
Tuesday.....85 1/2  
Wednesday.....85 1/2  
Thursday.....85 1/2  
Friday.....85 1/2

Wheat - Saturday, Sept. 12.....85 1/2  
Monday.....85 1/2  
Tuesday.....85 1/2  
Wednesday.....85 1/2  
Thursday.....85 1/2  
Friday.....85 1/2

Wheat - Saturday, Sept. 12.....85 1/2  
Monday.....85 1/2  
Tuesday.....85 1/2  
Wednesday.....85 1/2  
Thursday.....85 1/2  
Friday.....85 1/2

Wheat - Saturday, Sept. 12.....85 1/2  
Monday.....85 1/2  
Tuesday.....85 1/2  
Wednesday.....85 1/2  
Thursday.....85 1/2  
Friday.....85 1/2

Wheat - Saturday, Sept. 12.....85 1/2  
Monday.....85 1/2  
Tuesday.....85 1/2  
Wednesday.....85 1/2  
Thursday.....85 1/2  
Friday.....85 1/2

Wheat - Saturday, Sept. 12.....85 1/2  
Monday.....85 1/2  
Tuesday.....85 1/2  
Wednesday.....85 1/2  
Thursday.....85 1/2  
Friday.....85 1/2

Wheat - Saturday, Sept. 12.....85 1/2  
Monday.....85 1/2  
Tuesday.....85 1/2  
Wednesday.....85 1/2  
Thursday.....85 1/2  
Friday.....85 1/2

Wheat - Saturday, Sept. 12.....85 1/2  
Monday.....85 1/2  
Tuesday.....85 1/2  
Wednesday.....85 1/2  
Thursday.....85 1/2  
Friday.....85 1/2

Wheat - Saturday, Sept. 12.....85 1/2  
Monday.....85 1/2  
Tuesday.....85 1/2  
Wednesday.....85 1/2  
Thursday.....85 1/2  
Friday.....85 1/2

Wheat - Saturday, Sept. 12.....85 1/2  
Monday.....85 1/2  
Tuesday.....85 1/2  
Wednesday.....85 1/2  
Thursday.....85 1/2  
Friday.....85 1/2

Wheat - Saturday, Sept. 12.....85 1/2  
Monday.....85 1/2  
Tuesday.....85 1/2  
Wednesday.....85 1/2  
Thursday.....85 1/2  
Friday.....85 1/2

Wheat - Saturday, Sept. 12.....85 1/2  
Monday.....85 1/2  
Tuesday.....85 1/2  
Wednesday.....85 1/2  
Thursday.....85 1/2  
Friday.....85 1/2

Wheat - Saturday, Sept. 12.....85 1/2  
Monday.....85 1/2  
Tuesday.....85 1/2  
Wednesday.....85 1/2  
Thursday.....85 1/2  
Friday.....85 1/2

Wheat - Saturday, Sept. 12.....85 1/2  
Monday.....85 1/2  
Tuesday.....85 1/2  
Wednesday.....85 1/2  
Thursday.....85 1/2  
Friday.....85 1/2

Wheat - Saturday, Sept. 12.....85 1/2  
Monday.....85 1/2  
Tuesday.....85 1/2  
Wednesday.....85 1/2  
Thursday.....85 1/2  
Friday.....85 1/2

Wheat - Saturday, Sept. 12.....85 1/2  
Monday.....85 1/2  
Tuesday.....85 1/2  
Wednesday.....85 1/2  
Thursday.....85 1/2  
Friday.....85 1/2

Wheat - Saturday, Sept. 12.....85 1/2  
Monday.....85 1/2  
Tuesday.....85 1/2  
Wednesday.....85 1/2  
Thursday.....85 1/2  
Friday.....85 1/2

Wheat - Saturday, Sept. 12.....85 1/2  
Monday.....85 1/2  
Tuesday.....85 1/2  
Wednesday.....85 1/2  
Thursday.....85 1/2  
Friday.....85 1/2

Wheat - Saturday, Sept. 12.....85 1/2  
Monday.....85 1/2  
Tuesday.....85 1/2  
Wednesday.....85 1/2  
Thursday.....85 1/2  
Friday.....85 1/2

Wheat - Saturday, Sept. 12.....85 1/2  
Monday.....85 1/2  
Tuesday.....85 1/2  
Wednesday.....85 1/2  
Thursday.....85 1/2  
Friday.....85 1/2

**UPON YOUR DECISION.**

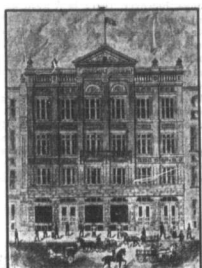
As to whom you will consign your grain this year depends upon your profit. The present crop is going largely off grade, and the man who has had the widest experience or sell the man who can handle this kind of grain most profitably. We have had that experience, and our extensive knowledge of the market enables us at all times to get the highest possible prices for grain of this kind. Try us with one consignment. Liberal advances on Bills of Lading.

**McLAUGHLIN & ELLIS**  
Chamber of Commerce, Minneapolis  
REFERENCE: Canadian Bank of Commerce. Commercial Agencies.

**THE NORTHERN ELEVATOR CO. LIMITED**  
GRAIN.  
HEAD OFFICE WINNIPEG.  
Branch Offices:  
Montreal, New York, London, Eng.

**ROBT. MUIR & CO.**  
Grain Dealers and Millers.  
Shippers of Wheat, Oats, Barley, Flax, Flour, Bran, Shorts, Chop.  
Buy or sell on commission. Before buying or selling grain in car lots write or wire us for quotations. Advances made on consignment. Licensed and bonded.  
WINNIPEG, MAN.

**ALEX. MCFEE & CO.**  
GRAIN EXPORTERS.  
MONTREAL AND WINNIPEG.  
C. A. LOUNG, Manager.



**WINNIPEG GRAIN AND PRODUCE EXCHANGE**  
F. PHILLIPS, President.  
A. R. HARGRAFF, CHAR. N. BELL, Vice-President, Secy-Treas.

**THE DOMINION ELEVATOR CO. LIMITED**  
GRAIN EXPORTERS.  
Office:  
GRAIN EXCHANGE - WINNIPEG.

**KIRKPATRICK & COOKSON**  
MONTREAL.  
Consignments of Grain and Country Produce solicited.  
F.O.B. Offers of Wheat, Barley, Oats, etc., requested.  
Established 1860. Manitoba Grain Code used.

**THE WINNIPEG ELEVATOR CO. LIMITED**  
GRAIN EXPORTERS.  
Office: Grain Exchange, Winnipeg.  
We will pay you HIGHEST PRICES for wheat, oats, barley, flax and mill stuff. Wire for prices.  
**MANITOBA COMMISSION CO. LTD.**  
211 Grain Exchange.  
Phone 1266. Winnipeg.

**W. GIBBINS & CO.**  
(Licensed and Bonded).  
GRAIN BROKERS AND DEALERS.  
Grain Exchange, Winnipeg.  
Wheat, oats, barley, Flaxseed Futures handled for local or United States markets. Correspondence invited. Liberal advances on consignments.

**GRAIN COMMISSION MERCHANTS**  
Winnipeg and Brandon.  
WHEAT, OATS, BARLEY AND FLOUR.  
Correspondence Solicited.

**E. O'REILLY**  
Of Jas Richardson & Sons.  
GRAIN EXPORTERS.  
Office: Kingston, Toronto and Grain Exchange, Winnipeg.  
Cereals or stock lots. Please ask for quotations. Reference: Merchants Bank.

**ALEX. CAVANAGH**  
GRAIN  
Grain Exchange, Winnipeg, Toronto.  
Consignments Solicited  
LICENSED AND BONDED  
REFERENCE - Bank of Hamilton.

**JAS. CARRUTHERS & CO**  
Limited.  
GRAIN EXPORTERS.  
MONTREAL TORONTO, WINNIPEG.

**THE MACLEAN-MANSON GRAIN CO.**  
BUYERS AND SHIPPERS.  
We handle all kinds of Grain delivered Fort William, Port Arthur or Duluth, or F.O.B. cars, from any station. We also make a specialty of consignments on commission. Liberal advances on consignment. Prompt payment on returns, and careful guarding of customer's interests. Reference: Bank of Montreal, Winnipeg, P. O. Box 571, Room No. 214, Grain Exchange, Telephone 388. Winnipeg.

**GRAIN**  
If you intend shipping or handling grain, you will find it to your advantage to do business through a Winnipeg commission house.  
Why not open an account this season with us? We are a strictly commission firm; our capital is ample and our facilities are the best. Cash advanced, best prices obtained, quick returns and we guarantee prompt and efficient service. Bankers-Union Bank of Canada. Write for particulars.  
**THOMPSON, SONS & CO.** The Grain Commission Merchants, Winnipeg.





# CARNEFAC STOCK FOOD

ALL THE LEADING STOCKMEN USE IT.

Following is a copy of a testimonial received from the Dentoria Park Farm. Read it:—

The Carnefac Stock Food Co.,  
65 Front Street East,  
Toronto, Ont.

Dentoria Park Farm,  
East Toronto, Ontario.

This is to certify that we have been using "Carnefac Stock Food" in connection with our milk cows, horses and young growing stock; we have given it a good trial, and can freely recommend it to all leading farmers and stockmen who are looking for a first-class tonic for all classes of stock.

(Signed) J. B. KETCHEN,  
Supt. Dentoria Park Farm.

# THE CONFEDERATION LIFE ASSOCIATION

HEAD OFFICE  
TORONTO

W. H. BEATTY, President.

VICE-PRESIDENTS.

W. D. MATTHEWS, FRED'K WYLD,  
W. C. MACDONALD, J. K. MACDONALD,  
Actuary. Managing Director.

There are no conditions as to residence, travel or occupation in the Unconditional Accumulative Policies issued by this Association.

Extended Insurance, Paid-up Policies and Cash Values guaranteed.

Manitoba, N. W. T. and B. C.—Winnipeg Office: 467 Main Street.  
CHARLES E. KERR, Sec.-Treasurer. DANIEL McDONALD, Manager.

HENRY WORSLEY, City Agent.

Brandon Office F. W. GILL, Cashier.



## MCCROSSAN WASHERS

Special size made for  
Hotels, Restaurants and  
Laundries.

MANUFACTURED BY  
812 Princess St.  
WINNIPEG

D.P. Estabrook

J. CLEARHUE  
Commission Merchant

FRUITS AND ALL KINDS  
OF PRODUCE

Special attention given to consignments of BUTTER and EGGS.

Consignments received in all lines. Correspondence solicited.

VICTORIA, B. C.

P. O. Box 536.

## A. GARRUTHERS & CO.

Dealers and Exporters of  
**Hides, Wool, Sheepskins,**  
TALLOW, SENEGA ROOT  
AND RAW FURS.

Liberal advances made on shipments against bill lading; wool marks, hide ropes and tags furnished on application.

Office and Warehouse:

120-122 King St., Winnipeg, Man.

—WEAR—

The Famous "Rough Rider" Suspenders



UNION MADE.

The easiest and most comfortable suspenders on the market.

Controlled by M. F. DE JOHN,  
19 Grundy Block - - - - - Whalshope.  
Send in for a sample order.

USE ONLY THE BEST

Is the STANDARD article  
READY FOR USE  
IN ANY QUANTITY.

For making soap, softening water, removing old paint, disinfecting sinks, closets, drains and for many other purposes. A can equals 20 pounds SAL SODA.

SOLD EVERYWHERE.

E.W. GILLETT COMPANY LIMITED  
TORONTO, ONT.

LEITCH BROS.

Oak Lake

"Anchor Brand" Flours

FROM NO. 1 HARD WHEAT.

Bran, Shorts and all kinds of Chopped Feed and Grain.

ADDRESSES  
OAK LAKE, MAN.

## Fall Millinery

NOW IN STOCK.

Splendid assortment of Fops, Walking Hats, untrimmed ready-to-wear. Ready-to-wear and Dress Hats. Also large variety of Birds, Wings, Quills, Trimmings, etc., etc.

### The D. McCall Co., Limited

54 and 56 Albert Street, Winnipeg.  
OTTAWA. TORONTO. MONTREAL. QUEBEC.

# PIPES

An immense assortment of

BRIAR,  
MEERSCHAUM,  
FIBRE,  
AND COB PIPES.

Including the famous G. B. D. Brand.

J. L. Meikle & Co.  
PORT ARTHUR, ONT.

## BOLE'S SPICED BLACKBERRY BRANDY

is the best medicine on earth for Diarrhoea, Dysentery, Summer Complaint, Colic, Pains in the Stomach, and all Bowel trouble.

Ask for Bole's Spiced Blackberry Brandy and do not take anything else. There is nothing can take its place.

### THE BOLE DRUG CO.

WINNIPEG, MANITOBA

## BROOMS

Write us for a sample order, say, Six Dozen. We will Pre-Pay same.

E. H. BRIGGS & CO.  
Broom Manufacturers.  
312 to 320 McDermott Ave.  
Telephone 1554. WINNIPEG, MAN.

## HICKS BROS. & CO.

TEA IMPORTERS  
And Wholesale Dealers in  
Fancy Groceries, Butter, Eggs, Cheese

Packers of Britannia, Beaver and Buffalo Blends of Packet Teas, and Sole Agents for Thos. Lipton's Package Teas for Manitoba, N. W. Territories and British Columbia.

277 Rupert Street,  
274 Pacific Avenue, Winnipeg

## JAS. MCCREADY & Co.

LIMITED

WHOLESALE ..  
Boot and Shoe  
Manufacturers

MONTREAL, QUE.  
W. WILLIAMS, Agent.

## WM. FERGUSON

WHOLESALE

Wines, Liquors  
and Cigars

406 STREET, BRANDON

Patented Oct. 25, 1902.



Increased station yard and other accommodation at other points on system 1,709,839  
 Additional elevators, Fort Williams and Fort Arthur 718,670  
 Wharves, docks, warehouses and coal handling plants 397,913  
 Telegraph extensions and additions 300,965  
**\$17,228,953**

**Receipts and Expenditures.**  
 The statement for the year ended June 30, 1902, is as follows:  
 Cash in hand June 30, 1902. \$15,227,054  
**Receipts.**  
 Surplus revenue, as per statement 10,071,470  
 Land department—lands and town-sites 2,944,841  
 Net proceeds of sales 49,622,948  
 Less amounts remaining in deferred payments 2,944,841  
**\$1,967,900**  
 Collection of deferred payments on previous years' sales 1,220,821  
 Ocean, lake and river steamers—Sale of steamers Walsh and Illicitliwest 14,750  
 Less applied to completion of steamer 3,571  
**11,178**

**Bonuses—**  
 Dominion Government subsidy on Crow's Nest Pass branch 60,000  
 Lake Winnipeg branch 8,560  
 Kootenay & Arrowhead railway 42,771  
 Province of Manitoba subsidy on branch lines 75,000  
 in Manitoba 250,421  
 Subscription to \$10,000,000 additional ordinary stock—  
 Payments of remaining instalments and premium on un-subscribed stock held 1,946,104  
 Four per cent. preference stock—  
 Amount realized from issue of 2,273,062 1,400,922  
 Consolidated preference stock—  
 Amount realized from issue of 2,704,360 4,121,453  
**\$45,919,570**

Deduct increase in accounts receivable—  
 Stations and traffic bal-  
 ances 44,915,088  
 Advances to new lines under construction 2,412,900  
 Miscellaneous securities 1,806,802

Due from Imperial and Dominion Governments 236,887  
 1902 \$9,175,191  
 Less amounts at June 30, 1902 1,271,854  
**1,903,336**  
**\$46,646,694**

**Expenditures.**  
 Dividends on preference stock—  
 2 per cent. paid Oct. 1st, 1902 625,000  
 1 per cent. paid April 1st, 1901 650,000  
**1,275,000**  
 Dividends on ordinary stock—  
 1/2 per cent. paid Oct. 1st, 1902 1,625,000  
 1/2 per cent. paid April 1st, 1901 1,125,000  
**2,750,000**

**Pension Fund—**  
 Amount paid to the fund as authorized at shareholders' meeting, October 2nd, 1901 50,000  
 Hotels, buildings and properties held in trust for the company—  
 Construction required and branch lines, exhibit "D" 98,110  
 Additions and improvements—  
 main line and branches, exhibit "B" 5,675,548  
 Additions and improvements—  
 leased and acquired lines, exhibit "C" 882,500  
 Rolling stock, shops and machinery 6,199,029  
 New Montreal shops 82,435  
 Pacific coast steamship branch 856,159  
**6,979,783**  
 Atlantic steamships—  
 Amount of purchase temporarily advanced from earnings 5,979,783  
 Land grant bonds—  
 Amount paid in redemption of 5 per cent bonds \$1,573,300  
 Amount paid on account of 3 1/2 per cent bonds 500,000  
**\$ 2,073,300**

**Securities acquired—**  
 Manitoba & Northwest Ry. system securities 924  
 Kootenay & Arrowhead Ry. 1st mortgage bonds 854,138  
 Great Northwest Central Ry. Forest extension, 1st mortgage bonds 651,588  
 Vancouver & Lulu Island Ry. 1st mortgage bonds 308,957  
 Ottawa, Northern & Western Ry., on account 1st mortgage bonds 2,091,254  
**\$ 3,807,161**  
 Increase in material and stores in hand 1,048,261  
**\$3,994,707**

Less increase in current liabilities 1,821,825  
**\$3,972,881**  
 Cash in hand 21,713,812  
**\$4,686,763**

**Earnings and Expenses.**  
 The statement of earnings for the year ended June 30th, 1902, is as follows:  
 Passengers \$1,011,973  
 Freight 28,202,061  
 Mails 677,556  
 Express 909,086  
 Parlor and sleeping cars 627,542  
 Telegraph, grain elevators and miscellaneous, including profit 2,868,072  
 On Pacific steamships 2,868,072  
**Total \$43,907,373**

**The statement of working expenses for the year ended June 30th, 1902, shows:**  
 Conducting transportation \$ 4,434,221  
 Maintenance of way and structures 6,723,241  
 Motive power 8,889,111  
 Maintenance of cars 2,467,576  
 Parlor and sleeping car expenses 144,349  
 Expenses of lake and river steamers 470,773  
 General expenses 2,232,315  
 Commercial telegraph 547,438  
**Total \$36,150,527**

**The Equipment.**  
 The statement of equipment at June 30th, 1902, shows:  
 Locomotives 840  
 First and second-class passenger cars, baggage cars, and colonist sleeping cars 725  
 First-class sleeping and dining cars 139  
 Parlor cars, official and paymasters' 45  
 Freight and cattle cars (all kinds) 36,370  
 Conductors' vans 492  
 Board, tool and auxiliary cars and steam shovels 864  
**46,863**

**The Traffic.**  
 The description of freight carried in the years ended June 30th were:  
 1902 1901  
 Flour, bris 4,923,995 5,110,177  
 Grain, bush 52,719,796 63,829,710  
 Live stock 982,742 1,160,986  
 Lumber feet 1,033,509,377 1,190,378,217  
 Firewood cords 304,963 285,601  
 Manufactured articles, tons 2,388,294 2,665,300  
 All other articles, tons 2,571,136 2,942,726

**Freight Traffic.**  
 1902. 1901.  
 Number of tons carried 8,769,934 10,189,847  
 Number of tons carried one mile 3,391,924,617 3,862,242,993  
 Earnings per ton per mile 0.75 cts. 0.74 cts.

**Passenger Traffic.**  
 1902. 1901.  
 Number of passengers carried 4,796,746 6,524,198  
 Number of passengers carried one mile 894,777,135 626,855,583  
 Earnings per passenger per mile 1.75 cts. 1.73 cts.  
 The traffic earnings for the year ended June 30th, 1902, were: Per train mile.

Passenger (including mixed trains) \$12,974,480.00 41.33  
 Freight (including mixed trains) 27,071,887.50 1.88  
**Total \$40,046,367.50 15.54**  
 The above earnings of traffic trains include earnings from mails, express, and sleeping cars, but do not include ocean, lake and river steamers, telegraph, elevators, rents, etc., the net earnings from which amounted to \$2,392,794.63.  
 Expenses per traffic train mile for the year ended June 30th, 1902, were: Per train mile.

Maintenance of way and structures 4,722,241.17 0.82  
 Motive power 3,989,117.77 0.59  
 Maintenance of cars 2,467,576.69 0.45  
 Traffic and general expenses 8,889,686.43 0.56  
**\$27,308,616.06 1.116**

**The Company's Lines.**  
 The mileage of the C. P. R. System is given as follows:  
 Mileage included in C. P. R. traffic returns 748,474  
 Mileage of the lines worked 879,919  
 Mileage under construction 364.0  
**8,965.3**  
 Mileage of Minneapolis St. Paul and Sault Ste. Marie Railway 2,409.5  
 Mileage of Duluth, South Shore & Atlantic Railway 666.0  
**2,071.5**  
**11,019.9**

# GREENSHED'S WESTERN LIMITED

WINNIPEG

**WHOLESALE**  
**Dry Goods**  
**Men's Furnishings**  
**Carpets, Linoleums**  
**Oilcloths, etc.**  
**Ladies and Children's**  
**ready-to-wear Garments**

**WE** beg to announce to the trade that we will have a large and complete stock of all lines in our new Warehouse in Winnipeg by the 1st of December. Our travellers will be out in a few days with complete ranges of Spring Samples. They will show some very special values from all departments. It will pay you to see our range before buying.

**AGENTS FOR**  
**Priestly's**  
**Dress Goods**  
**Petway's Gloves**  
**Alexander's Linens**  
**D & A Corsets**

## SPECIAL

**Crums, Prints==**

We quote at 10c. (Eastern price). Forward orders for quantity at once and select your patterns later as repeats and all late orders are sure to be higher.

## MONTREAL GRAIN TRADE.

Toronto News: Canada is making a good fight of it for the grain traffic of the West. During the last two or three years Montreal has been making great strides as a grain shipping port, and New York newspapers are manifesting lively alarm. It is well to remember that there is a touch of politics in their anxiety. The state of New York is entering upon an interesting campaign. The Erie canal is badly in need of enlargement. Plans have been prepared whereby, at a cost of one hundred million dollars, the canal will be improved so as to permit the passage of thousand-ton barges. The question of authorizing this expenditure is to be submitted to the voters this autumn. The cities of New York Buffalo are trying to convince the rural voters that it would be a good safe investment to spend a hundred million in cheapening freight rates on the all-water route between Chicago and New York. Lamentations over the decadence of New York at present have an electrifying sound. It may be added that the railways are fighting the canal project with all their strength.

Some of the canal promoters' arguments are interesting. What is actually happening is that grain is showing a tendency to desert the American Atlantic ports—except Portland—and to flow in greater volume to Montreal and the Gulf ports, New Orleans and Galveston. "It is stated," says the New York Journal of Commerce, "that Montreal is getting wheat from Chicago by way of the Canadian Pacific and the Grand Trunk line at a rate of three cents per bushel, while New York rates are about 7c." This newspaper proceeds to give a detailed set of figures going to prove that on an enlarged Erie canal grain could be carried from Buffalo to New York by steam barges, each towing three consort, for 8-10 of a cent a bushel. The cost per ton per mile would be .52 of a mill.

Meanwhile the figures which are being published show that Montreal has gained heavily in the matter of wheat exports, and is gaining ground. The Wall Street Journal examines the

grain trade during 1901 and 1902 of the six great American lines. These are the Baltimore & Ohio, the Delaware, Lackawanna & Western, the Erie, the Lehigh, the New York Central and the Pennsylvania. In 1901 the six railroads carried over 12,000,000 tons of their total freight tonnage. In 1902 the same companies carried rather less than 9,000,000 tons of grain, or 5.31 per cent of their total freight tonnage. In some cases the shifting was quite startling. In 1901 no less than 11.5 per cent of the New York Central's tonnage was in grain; in 1902 the proportion had dropped to 7.1 per cent. The drop in the case of the Lehigh was from 10.8 to 7.5 per cent. "The grain tonnage carried by these great trunk lines in 1902 shows a decrease compared with 1901 of 5,761,261 tons, or practically 30 per cent," says the Wall Street Journal. "No statistics are available as yet to indicate how far this falling off has been continued in 1903," this newspaper continues, "but we are informed by traffic officials that the diversion of grain traffic from the trunk lines has never been so heavy as at the present time."

The next point of comparison instituted by this journal is in the wheat and corn exports from the various ports. We may first take the case of wheat exports for the seven months ending Aug. 1. The six American Atlantic ports show the following results:

	1901.	1902.
Baltimore	1,396,794	4,427,657
Boston	1,554,257	4,947,029
Newport News	124,488	2,574,723
New York	6,857,363	9,553,741
Philadelphia	754,872	4,790,529
Portland	1,446,664	584,874
Totals	13,514,918	36,381,671

The two Gulf ports made the following showing:

	1901.	1902.
Galveston	7,413,302	1,968,396
New Orleans	4,323,461	6,134,971
Totals	11,736,763	8,103,367

Puget Sound exports dropped from 8,015,961 to 3,000,878 bushels. Montreal was open for only three of these seven

months. From May 1 to Aug. 1, 1902, Montreal's wheat exports were 8,293,655. During the same period in 1903 they rose to 9,507,092 bushels. During the last few months Montreal was the leading wheat-shipping port of the continent, temporarily, at least, displacing New York. The fact that Portland is the only American Atlantic port to gain is significant.

Montreal has gained rapidly as a corn-shipping port. In the first seven months of 1902 she sent abroad less than 90,000 bushels. In the same period of this year her shipments were nearly four million bushels, and the movement is said to be increasing. All ports on the eastern seaboard of the continent have experienced heavy increases in corn export.

The commercial columns of the News a few days ago contained an analysis of the July grain trade, which fully bears out the contentions of the Wall Street Journal. During that month Montreal received 3,870,000 bushels of wheat, and exported 2,557,000. New York during July received 1,344,000 bushels and exported 882,000. Montreal also received 1,570,000 bushels of corn, as against New York's 2,253,000. She stood second to New York in corn receipts, Baltimore coming third with 588,000 bushels.

This is the encouraging way in which the lake and rail and all-water routes are working at present. The Wall Street Journal expressly attributes the result of our cheap routes. The transcontinental policy of the government should stimulate a line of traffic which does so well. The perfecting of the Canada Atlantic route and its incorporation with the intercolonial should send the volume of wheat traffic passing over it up from twenty to forty or fifty million bushels. At the same time we should aid an efficient all-rail route which would supplement the lake and r. l. route.

## CALIFORNIA CITRUS CROP.

The Los Angeles Herald, which follows the California orange industry more closely than any other paper in California, makes a specialty of crop reports, corroborates previous reports of a very big coming crop. It says conservative estimates by railroad men,

after a visit to some of the largest orange groves in the southern part of the state, place next year's orange and lemon crop at 35,000 carloads. Some even predict as high as 40,000 carloads, or nearly twice the total yield of the season just ending.

Many of the young trees are bearing this year, while the older ones have almost doubtless the fruit that was noticed a year ago this time.

"It is believed that when the season starts in there will be no holding back for bigger prices and this, provided there are plenty of cars, should result in one of the most successful orange seasons on record."

A. H. Nuttger says he thinks 30,000 carloads will cover the orange yield. "As to the handling of the crop, I have already had conferences with representatives of the Southern Pacific and Santa Fe, and there need be no fear but the roads will be able to move the fruit on time. About 8,000 refrigerator cars were required to move the crop the past season, and I calculate that 10,000 will do the business next season. This means that 2,000 additional cars must be procured somewhere."

## THE AUGUST FIRE LOSS.

The fire loss of the United States and Canada for the month of August, as compiled from the carefully kept record of "The Journal of Commerce and Commercial Bulletin," shows a total of \$8,428,350. The following table shows the losses for the first eight months of the years 1901, 1902 and 1903.

	1901.	1902.
January	\$ 13,346,250	\$ 10,000,000
February	10,000,000	21,000,000
March	9,507,650	11,000,000
April	21,548,200	21,904,000
May	15,806,800	14,900,000
June	14,654,250	26,300,000
July	12,828,600	10,000,000
August	8,428,350	7,425,100
Totals	\$106,002,300	\$104,553,400

Mrs. Pugh—I know you are a little trifling and annoying at times, Jack; but if I had my time over again, I'd marry you just the same.  
Pugh—I don't believe you would.—Pick-Me-Up.



The best advertising on earth is by word of mouth. That is the kind of advertising that is rapidly increasing the sales of

## Celluloid Starch

Never Sticks Requires no Cooking.

Our newspaper advertising induces a first trial, but the excellent qualities of CELLULOID STARCH make a living advertisement of every user; they enthusiastically endorse it to their friends.

It is good policy for you to recommend CELLULOID STARCH to your customers—they'll appreciate your kindness.

# The Brantford Starch Works

LIMITED,  
Brantford, Can.

**IRON AND STEEL TRADE.**

In their weekly review of the pig iron trade Rogers, Brown & Co. say: "An increasing number of blast furnaces are selling the turn on the market, and refusing to follow further the downward course of prices. They will work out present contracts, which in some cases will require two or three months to be filled, but will not put out if there is no improvement. There are two things which these makers are unwilling to do is to pile up stock at present cost of production, and the other is to make it and sell at a loss. While there is no attempt made at concert of action in this policy, and can be none, a considerable number of furnaces are committed to it and force of circumstances will compel others. Meantime the prevailing feeling is to decline seems to be one of indifference. It is thought that the sooner the rock is reached, the better for all concerned."

"The volume of new orders in iron by means small. There is some diminution of melt noted among the foundries, but in the main consumption is running heavy, as evidenced by the fact that the big current output, 1,615,643 tons in August, up 32,000 tons from the corresponding month, was all consumed except about 38,000 tons added to furnace stocks. It is estimated that stocks in buyers' yards declined that much in August. So that for the present at least, the output and production are about evenly balanced."

"Furnacemen are feel somewhat sore that they are called upon to stand the brunt of the decline. Prices of iron and other finished products are well maintained, and foundries and mills are prospering, while the pig iron producer has been off 30 per cent, to 35 per cent, is selling at cost and under, and is expected to make no further concession."

"The continued heavy importations cause wonder in the trade. About 200,000 tons of all kinds of iron scrap, etc., came in in August, a small increase over July. Pig iron was also dropped from 100 to 32,000 tons. There can be but one possible explanation, viz. that the demand for shipments on contracts placed months ago. Except in one or two cases, like the manganese and phosphorus pig, certain and heavy loss would result from any purchase of iron at present prices. The ordinary iron is worth more in England or Germany to-day than it is at Atlantic furnaces, and the cost of freight and \$4 duty to scale. That we continue to assimilate foreign stuff at a rate of 2,000,000 tons a year, indicates a capacity for absorption that can only be described as enormous."

**PURE MAPLE SYRUP.**

Sugars and syrups prepared from the sap of the sugar maple tree, though valued chiefly on account of certain minor ingredients to which they owe their peculiar pleasant flavor and taste, are composed largely of the sugar sucrose and on that account are closely similar to the products known as the best of all sugar cane. It has therefore been possible by the aid of well-known scientific methods of analysis and coloring to prepare from common granulated white or brown sugar a syrup or sugar identical with the pure or imitate maple sugar and maple syrup has also been practiced extensively for many years. A good flavor of maple syrup, it has been claimed, can be mixed with 10 to 15 per cent of cane syrup and 15 per cent of common cane sugar so as not to be distinguished from the pure article, and such sugar covered with artificial essences or with extracts prepared from corn cob or hickory bark are said to be on the market, yet on this point the analyst has been practically helped, the amount of flavoring matter used being generally too small to be detected by chemical means.

"The public have been in total ignorance of the character and extent of the frauds which have been carried on in the maple syrup trade. It has been commonly supposed that large quantities of 'pure Vermont maple syrup' and 'pure Canada sugar produced' in localities where the sugar maple trees never grows, unless for some fraudulent purposes and has been asserted that such syrups become cheaper and more abundant than the genuine article, and that maple sugar areas, a pure apple cider vinegar. The constituents are never found to fall below

**G. W. CRANSTON**

**Picture Frames and Mouldings**

Wholesale and Retail.

We handle Mouldings from the best Canadian and American artists, picture backing and mitre machines.

Artists' Material, oil paintings, photo, color engravings, etchings, photo, photo-etchings.

498 Main Street, Winnipeg. Tel. 1357.

**SADLER & HAWORTH**

Tanners and Manufacturers of and Dealers in

**OAK LEATHER, AND RUBBER AND GANDY BELTING**

Montreal and Toronto.

A. P. MACDONALD, Sales Agent. Western Canada Block, Winnipeg.

**CITY BOX FACTORY**

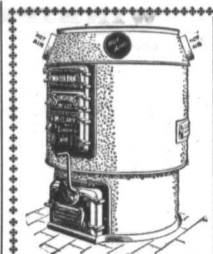
**THE CZERWINSKI BOX CO.**

Manufacturers of all kinds of boxes, crates, buttes and other articles. Lock corner and printed boxes.

93 AND 95 LOMBARD STREET. WINNIPEG

ed to maple syrup and sugar there has been a long struggle to the right of the consumer to be protected against being served with an article other than that which he asks for and for which he pays a price. The provisions of the act commands. A part of Sec. 1 of the law relating to maple sugar and syrup reads: "The manufacturer of such maple sugar or pure maple syrup, any substance unless it be the legitimate product of the sap of the maple tree, or of tartaric acid, starch, glucose and glucosides and mineral acids and all foreign ingredients injurious to health, provided, however, that the provisions of this act shall not prevent the manufacturer of such imitation of any maple sugar or maple syrup in part of pure maple sugar or pure maple syrup combined with other substances not injurious to public health, which shall be duly labeled on the outside of each can, jar, bottle, package or other receptacle of any nature whatsoever." The remainder of the section prescribes the manner of labeling.

The analysis of commercial brands of alleged maple products has during recent years been confined mainly to the detection of starch in sugar, or the small number of samples examined in the Dairy and Food Commission laboratory. In the progress of the work it has been ascertained that there were maple syrups more highly adulterated with common cane syrup, and that a considerable number of such products together with the analysis of samples of known purity would be required to determine the amount of such products from the false. To obtain samples of known purity fairly representing the situation in the consumer's laboratory. As a result of many months of patient labor it has been demonstrated that the adulterated maple syrups and maple syrups are radically different in character from the genuine article, and from the products now found upon the market. The pure maple sugar or syrup employed is a product so distinct in character from the adulterated maple sugar, a pure apple cider vinegar. The constituents are never found to fall below



**SUNSHINE FURNACE**

Extracts all the heat from the fuel and distributes it through the house—only the smoke goes out the chimney.

And it hasn't got that enormous appetite for coal, so common in the ordinary furnace.

Simple to operate, easily cleaned and will last longer than any other Canadian heater.

Burns coal, coke or wood. Booklet free. Sold by all enterprising dealers. Send for Catalogues.

**The McGlary Mfg. Co.**

183-185-187 Bannatyne East. WINNIPEG Montreal London Toronto St. John, N.B.

**ANGLO-AMERICAN FIRE INS. CO.**

Head Office: Toronto. AUTHORIZED CAPITAL, \$1,000,000

- BOARD OF DIRECTORS.
- J. J. LONG, Esq. Vice-President (The T. Long & Brother Co., Collingwood.)
  - A. A. Aldrich, Esq. Messrs. A. A. Aldrich & Co., Limited. (The W. W. Gage Co., Toronto.)
  - J. R. Barber, Esq. Pres. Tor. Paper Co. of Ontario. (Georgetown)
  - Dr. O. Herbert Bowley. (Berlin)
  - H. P. Cunningham, Esq. Banker. (Kingston)
  - H. P. Eckhardt, Esq. Messrs. H. P. Eckhardt & Co. (Toronto)
  - John Flett, Esq. Field. Lowndes & Co. (Toronto)
  - John Goswami, Esq. Messrs. Goswami, Kent & Co. (Toronto)
- Agents wanted in every town in Manitoba and Northwest Territories where not already represented. Apply to FRED T. HOLLAND, General Agent, Winnipeg.

definite limits. Such a thing as a "pure maple sugar" or a "pure maple syrup," composed only of water and sucrose (cane sugar) is an absurdity. If the essential constituents of maple product be eliminated to any extent below the minimum normal composition the result constitutes a fraud. The process of "toning up" or "toning down" (whichever a certain class of producers choose to designate) to sell (1) by the addition of cane sugar syrup is now the form of adulteration most universally practiced, and the result is that a very large proportion of the well-known commercial brands now represented and sold as pure contain very little or none whatever of the genuine article. The results of analyses during the past three months may be stated as follows: Samples of maple syrups adulterated, 55 per cent. Samples of maple sugars adulterated, 160 per cent. Total samples not containing maple sugar, 25 per cent. Commercial brands not genuine, 88 per cent.

Three samples were found to contain glycolic acid added as a preservative. Five samples were starch glucose mixtures, one of which was sold in a tin which on one side as required by law and on the other side as required by "Genuine Canada Maple Syrup." The usual terms of sale are amusing as well as instructive; they illustrate the quality of intelligence and conscientiousness of the dealer. One brand of imitation maple syrup was styled "Genuine Unadulterated Vermont Maple Syrup" and bore the following guarantee of purity: "We certify that this maple syrup is absolutely pure and free from glucose, flavoring matter, coloring, and every other adulterant and substitute for sugar, and we will forfeit \$1,000 for proof to the contrary."

The manufacturers of adulterated and imitation maple syrups and sugars use a variety of forms of deception which are as transparent as their products are thin, and when called to account they are unable to give any excuses. The assertion that the supply of pure maple sugar "does not begin to supply the demand" is a plain justification for present conditions. It is necessary that the market be supplied with pure maple sugar and other genuine products in order to foster the trade, then let there be an open frankness in the labeling and a plain honesty in the fixing of prices. Prices based on the cost of common granulated sugar, pure maple syrups, and maple sugar, are not equitable than many now prevailing, and the label worded like the following will represent the composition of an alleged maple syrups now sold

in carloads throughout the state: "This maple syrup is composed of the following ingredients, and none other: Cane sugar syrup blended with sufficient maple syrup, with other added coloring and flavoring necessary to maintain a uniform quality of product."—Minnesota Commercial Bulletin.

**ZANZIBAR CLOVES.**

The following table will show the actual quantities of cloves brought into the town of Zanzibar during the last ten years—

Year	Zanzibar, Frasilas	Pemba, Frasilas	Total, Frasilas
1897	13,369	25,287	38,656
1898	13,071	37,999	51,060
1899	14,237	30,460	44,697
1900	12,725	27,690	40,415
1901	10,675	24,554	35,229
1902	9,220	24,765	33,985
1903	10,110	24,555	34,665
1904	6,937	29,719	36,656
1905	5,675	33,197	38,872

Note.—1 frasila equals 35 pounds.

From these figures it will be seen that the clove crop of the year was the smallest recorded during the last decade; picking being early but continued for less than usual, and in some districts, notably in Pemba, a considerable quantity of cloves remained to rot on the trees at the end of the year. The labor available at harvest time altogether inadequate, and although very little was done to remedy this deficiency, a very large proportion of each year's crop remains unpicked. The contribution made to commerce by foreign countries is shown in Annex II. The market price at the beginning of the year stood at about \$5.00 per frasila for Zanzibar, and \$3.30 for Pemba cloves, but the demand was so great that by the end of September the quotation fluctuated between \$2.50 and \$3.25; during the rest of the year the prices rose steadily at from \$3.40 to \$3.80 for Zanzibar, and from \$3.20 to \$3.50 for Pemba; but toward the end of December to \$3.30 and \$3.17, respectively. The average price throughout the year was about \$3.00 per pound.—British Consul report.

Ellis—"George says that my hearty invitations him." Stella—"I heard that he said that your looks would give a man to

"What's this about the moral influence of the stars? I thought that was a place of amusement. The stars are not much of a play-gor, are you?"—July.

WINNIPEG PRICES CURRENT

ADVERTISE.

Businesses for Sale, Partners Wanted, Travellers Wanted, Businesses Wanted to Purchase, etc. In The Commercial. It goes into almost every place of business in the Dominion, from the Lake Superior to the Pacific coast.

FOR SALE.

A good going general store business on the main line C. P. R. (important town). The present stock is all new. An excellent opportunity for a man with limited capital. Particulars on application to A. B. The Commercial, Winnipeg.

WANTED.

Party with \$10,000 to \$20,000 to take interest in merchant milling business. Splendid chance for profitable investment. Address B. C. D. care of The Commercial, Winnipeg.

FOR SALE.

A general store in Southern Alberta, adjoining C. and E. railway station yard, 10 miles from the next store. An improving business. Address R. Palling, De Winton, Alberta.

COMMERCIAL TRAVELLER

WANTED.

To handle side line. Light samples. Quick selling goods. Apply L. C. Y. care The Commercial, Winnipeg.



To handle side line. Light samples. Quick selling goods. Apply L. C. Y. care The Commercial, Winnipeg.

DENIM PANTS, STOCKS OVERALLS, SHIRTS

We have your fall orders early to avoid disappointment. We are very busy now and expect to be more so.

THE HOOPER MANUFACTURING CO. LTD. WINNIPEG.

COMPARATIVE PRICES OF STAPLES.

Table with 2 columns: Item and Price. Includes Flour, Wheat, Corn, Oats, Rice, Beans, Sugar, Coffee, Tea, etc.

Prices a Year Ago.

Following were Winnipeg prices this date last year: Wheat-No. 1 hard wheat closed at 70c, September delivery. Flour-Jobbing price, per cask Patent, \$2.10; best bakers', \$1.50. Millflour-Iron, \$1.50 per ton in bulk; shorts, \$1.50 per ton, delivered. Harley-Peak grades, 26c per bushel on track. Oats-Cariots on track, No. 2 white, 26c per bushel. Flax-Market nominal. Butter-Dairy, 120c per lb., commission basis for best grades; creamery, 17c per lb., factory point. Cheese-5c per lb. delivered here. Eggs-4c per fresh candied, commission basis. Potatoes-50c per bushel. Dressed Meats-5c per 100 lbs. for city dressed country, 4c under these terms; veal, 50c; mutton, fresh, 10c; mutton, 10c; mutton, 10c. Poultry-Spring chickens, 40c per pair; fall, 60c per pair; fall, 60c per pair; fall, 60c per pair. Hides-No. 1 sides, 4c delivered here. Wool-Unwashed Manitoba fleeces, 9c delivered here. Follow-50c.

GROCERIES.

Prices to retail dealers for ordinary lots, with usual discounts.

Large table listing various grocery items and their prices. Includes Apples, Raisins, Corn, Beans, Sugar, Tea, Coffee, etc.

FRUIT.

Table listing various fruit items and their prices. Includes Apples, Raisins, Corn, Beans, Sugar, Tea, Coffee, etc.

SMOKING.

Prices for various smoking products.

WOODEN WARE.

Table listing various wooden ware items and their prices. Includes Tubs, Buckets, etc.

BROOMS.

Table listing various broom items and their prices. Includes Extra O. K. Parlor brooms, etc.

DRUGS.

Table listing various drug items and their prices. Includes Alcohol, Bismuth, etc.

TEAS.

Table listing various tea items and their prices. Includes China Blends, etc.

TOBACCO.

Table listing various tobacco items and their prices. Includes T. and B. 3c, etc.

LEATHER.

Table listing various leather items and their prices. Includes Harness, etc.

**CANADIAN PACIFIC**

The only direct line between  
**Atlantic and Pacific**

To all Points

**Ontario  
Quebec  
Maritime  
Provinces**

**EASTERN AND NEW ENGLAND STATES.**

**ALL NORTH PACIFIC COAST AND CALIFORNIA POINTS.**

through Tickets on Sale at all Ticket Offices to

**China, Japan  
Australia, Antipodes**

First Class Sleeping Cars on all Through Trains.

Tri-Weekly Tourist Cars, both East and West Bound.

Dining Car Service is unequalled

For full information apply to any C. P. Agent, or to

**C. E. McPHERSON,**  
General Passenger Agent.

**W. BRODIE,**  
Asst. Gen. Pass. Agent, Winnipeg, Man.

**Railway and Traffic Matters.**

The Canadian Pacific start their steamship service between Antwerp and St. John, N. B., on Nov. 1, will be bi-monthly in the winter and tri-monthly in the summer to Quebec and Montreal.

At the annual meeting of the stockholders of the New York, New Haven and Northern railway at Winnipeg, President Chas. H. Meilen, of the Northern Pacific, will be elected to succeed President Hall, whose resignation is expected this week.

The earnings of the Canadian Northern railway for the week ending September 7th were \$38,200, as against \$39,000 for the corresponding week last year, an increase of \$7,000. From July 1 to September 7th the earnings are \$1,800, as against \$24,100 last year, an increase of \$229,700.

Work commenced this week on a new 12-story roundhouse for the Canadian Northern railway at Winnipeg. The building will be located between Broadway bridge and the company's present shops. This will be the largest terminal improvements



Office: 391 Main St. Tel. 1446.

**THROUGH TICKETS**

TO ALL POINTS  
**EAST  
WEST  
SOUTH**

California and Florida Winter Resort  
Also to Europe,  
Australia, China and Japan.

Pullman Sleepers.  
All Equipment First Class.

For further information apply to H. EWINFORD, General Agent, 391 Main street, Winnipeg; or CHAS. R. FEE, General Passenger and Ticket Agent, 744, Minn.

that the C. N. R. company will carry out here within the next two years.

The Canadian Northern Railway Co. has a survey party out running a line to Hudson Bay.

The C. P. R. is revising its wheat and flour rates in the west. The general freight traffic manager is now in the west, partly for this purpose. It is reported that at least 2c will be taken off the wheat rate. No announcement has yet been made by the company as to the amount of the proposed reduction.

The differences between the city of Winnipeg and the Canadian Pacific Railway Company regarding the construction of a roadway under Main street have at last been settled. The company agrees to indemnify the city against all claims for damages in connection with the closing of streets, etc. It also pays all the cost of the proposed works.

The Canadian Northern Lake Superior limited boat train service will be suspended for the winter season this Saturday at midnight, and will be replaced by a daily passenger train service each way, Sunday excepted, between Winnipeg and Port Frances, and a tri-weekly mixed train service between the last-named point and Port Arthur. There will be a daylight service on both sections. The mixed trains will leave Port Arthur on Mondays, Wednesdays and Fridays, and Port Frances on the alternate days of the week.

**GREENSHIELDS WESTERN LIMITED.**

F. R. Gallagher, lately senior western representative of Greenshields Limited, Montreal, who has been appointed managing director for the new Winnipeg dry goods house of Greenshields Western Limited, returned from an eastern trip this week. While east Mr. Gallagher purchased a full stock of Canadian and United States manufactures for the new Winnipeg house. Construction is being pushed as rapidly as possible on the new warehouse, and it is expected that the building will be finished and filled with a complete new stock of dry goods by the 1st of December. Travelers for the new house will start out in a few days with full lines of samples. G. M. Newton, A. C. Russell and J. E. Wall, who have been Mr. Gallagher formerly represented Greenshields Limited, of Montreal, in the west will rejoin with the new house of Greenshields Western Limited. Two or three new travellers will be added to the staff at once. With the large connection already enjoyed throughout the west, the new house is assured of a large business from the start.

**JUST CIGARS**

Just the right kind of Tobacco.  
Just the right kind of Workmanship.  
Just the right size for a long smoke.  
Just the right price for the Best.  
Just the right kind to Buy.

**Just the "T L"**

Sold Here, There and Everywhere.

**Western Cigar Factory**

WINNIPEG.

THOS. LEE, Prop.



**No. 10 CASH REGISTER**

This is a good and useful article. Send us your order for one of these for the busy fall trade. Also send us your orders for Wrapping Papers, Heavy Bags, Shot Bags, Hat Bags, etc. Full stock celebrated 20th Century Oyster Buckets. Show Cases, Alarm Tills, etc. Your valued orders solicited.

**THE CONSOLIDATED STATIONERY CO. Limited**  
244 McDermott Avenue.  
WINNIPEG.

**No. 10 CASH REGISTER.**  
The Twentieth Century demands them. All enterprising merchants have caught the twentieth century spirit and are in full sympathy with modern business methods, and appreciate the value of cash registers in the systematic conduct of business.

**THE BRUNETTE SAW MILL CO. LTD.**  
SAPPERTON, NEW WESTMINSTER, B.C.

MANUFACTURERS AND DEALERS IN  
**FIR CEDAR**

Dimension, Boards, Flooring, Dimension, Boards, Siding, Ceiling, Mouldings, Shingles, Etc.  
Siding, Ceiling, Etc. Ing, Mouldings, Shingles, Etc.

**DOORS AND FINISHINGS OF ALL DESCRIPTIONS.**

**DUNCAN SINCLAIR**  
General Agent for Manitoba and Territories.

Orders Promptly Attended To. Office: Cor. Higgins and Gladstone Sts.  
P. O. Box 721. Winnipeg.

# WALL PAPER

SEASON 1903-4.

We take pleasure in announcing that our travellers will be on the road shortly with the celebrated Watson Foster Wall Papers.

The new line excels anything they have yet produced, and embodies the result of months of diligent effort on the part of designers of world-wide reputation.

Our representative will visit you in ample season, and we know that it will be in your interest to defer buying until you have seen our samples.

**CLARK BROTHERS & CO., Wholesale Stationers**  
P.O. Box 1240. WINNIPEG, MAN.

## THE FALL SEASON

at its height may find you in need of CLOTH AND FUR CAPS, SHEEP-SKIN LINED COATS, ETC.

If our travellers do not reach you in time, kindly mail us your sorting orders, which will be completed and shipped same day as received.

**JOHN L. WALLER & CO.** WHOLESALE MEN'S FURNISHINGS  
214-218 PRINCESS STREET, WINNIPEG.

## RECIPE FOR PASTRY

To one cup of Ogilvie's "Hungarian" add a pinch of salt. After mixing thoroughly add two tablespoonfuls of lard, rubbing and mixing the flour and lard well together. Then add three tablespoonfuls of cold water and roll thin. Pastry dough should be handled as quickly and as little as possible. It improves the dough if permitted to stand 24 hours in a cold place.

OGILVIE'S **HUNGARIAN FLOUR**  
**FOR PASTRY**

As well as for Bread is unequalled

See that you get

# UPTON'S

— Jams, Jellies —  
and Orange Marmalade

THEY  
ARE  
PURE

The W. H. Malkin Co.  
LIMITED.

Importers and  
Wholesale Grocers

Producers of the Celebrated  
VICTORIA CROSS Evaporated  
Fruits, Teas and Coffees.

HEADQUARTERS for Sago, Tapioca,  
Rice and all Classes of English  
Groceries.

Prompt attention to all letter orders.

137 Water St. - VANCOUVER, B.C.

LAMB FENCE

OUR MOTTO: "Make as good goods as  
cash."

OUR LINES FOR 1904: Ranch Fence, Po  
Fence, Hog Fence, Lawn Fence, Metal Gal  
colled Wire, and Fence Staples.

Liberal discount to the trade. A post ca  
will bring our traveller.

**The H. R. Lamb  
Fence Co. Ltd.**

LONDON, ONT. WINNIPEG, MA.

Headquarters for

METAL SHINGLES  
SIDINGS  
CEILINGS  
FURNACES  
STOVES

Write for Catalogue and Prices.

**CLARE & BROCKES**  
WINNIPEG.

Western Agents for  
CLARE BROS. & CO.  
Metal Shingle & Siding Co., Preston, C.

**DREWRY'S**

"REFINED ALE"

"Which sparkles like Champagne,"  
the standard by which others are judged.  
Always the same: purity guaranteed.  
Flavor most pleasant. As a table ale  
cannot be excelled. Bottled in half-gallons  
for family use.

**E. L. DREWRY**  
Manufacturer and Importer.  
Winnipeg.

TEES & PERSSE

AGENTS  
WINNIPEG