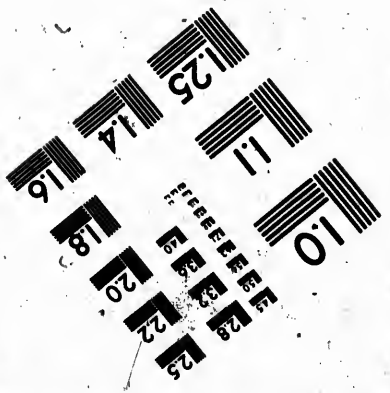
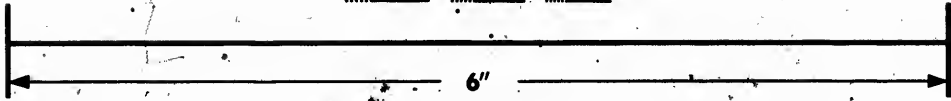
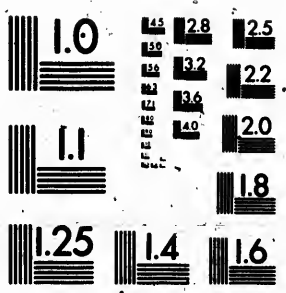


**IMAGE EVALUATION  
TEST TARGET (MT-3)**



**Photographic  
Sciences  
Corporation**

23 WEST MAIN STREET  
WEBSTER, N.Y. 14580  
(716) 872-4503

**CIHM  
Microfiche  
Series  
(Monographs)**

**ICMH  
Collection de  
microfiches  
(monographies)**



**Canadian Institute for Historical Microreproductions / Institut canadien de microreproductions historiques**

**© 1991**



The copy filmed here has been reproduced thanks to the generosity of:

Library of the National Archives of Canada

The images appearing here are the best quality possible considering the condition and legibility of the original copy and in keeping with the filming contract specifications.

Original copies in printed paper covers are filmed beginning with the front cover and ending on the last page with a printed or illustrated impression, or the back cover when appropriate. All other original copies are filmed beginning on the first page with a printed or illustrated impression, and ending on the last page with a printed or illustrated impression.

The last recorded frame on each microfiche shall contain the symbol  $\rightarrow$  (meaning "CONTINUED"), or the symbol  $\nabla$  (meaning "END"), whichever applies.

Maps, plates, charts, etc., may be filmed at different reduction ratios. Those too large to be entirely included in one exposure are filmed beginning in the upper left hand corner, left to right and top to bottom, as many frames as required. The following diagrams illustrate the method:



L'exemplaire filmé fut reproduit grâce à la générosité de:

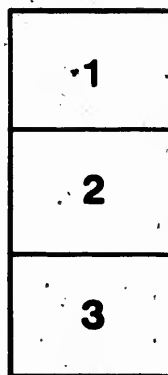
La bibliothèque des Archives nationales du Canada

Les images suivantes ont été reproduites avec le plus grand soin, compte tenu de la condition et de la netteté de l'exemplaire filmé, et en conformité avec les conditions du contrat de filmage.

Les exemplaires originaux dont la couverture en papier est imprimée sont filmés en commençant par le premier plat et en terminant soit par la dernière page qui comporte une empreinte d'impression ou d'illustration, soit par le second plat, selon le cas. Tous les autres exemplaires originaux sont filmés en commençant par la première page qui comporte une empreinte d'impression ou d'illustration et en terminant par la dernière page qui comporte une telle empreinte.

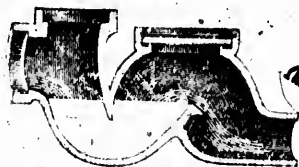
Un des symboles suivants apparaîtra sur la dernière image de chaque microfiche, selon le cas: le symbole  $\rightarrow$  signifie "A SUIVRE", le symbole  $\nabla$  signifie "FIN".

Les cartes, planches, tableaux, etc., peuvent être filmés à des taux de réduction différents. Lorsque le document est trop grand pour être reproduit en un seul cliché, il est filmé à partir de l'angle supérieur gauche, de gauche à droite, et de haut en bas, en prenant le nombre d'images nécessaire. Les diagrammes suivants illustrent la méthode.



THE STANDARD DRAIN PIPE CO.  
LIMITED

St. Johns, P. Q.



Manufacturers of

Maguire's Patent Trap.

VITRIFIED DRAIN PIPES

AND CONNECTIONS.

Junctions, Elbows, Bends, Traps, Siphons, Cesspools, Gully Traps,

Flue and Stove Linings, Fire-Clay Goods, &c., &c.

CERTIFICATES

—FROM—

Prominent Civic Officials and Experts

OF THE CITIES OF

MONTREAL AND TORONTO.



Straight Pipe.



Single Lev. Junction.

**CERTIFICATE FROM J. A. U. BEAUDRY, ESQ., C. E.,**

DOMINION LAND SURVEYOR.

99 ST. JAMES ST., MONTREAL,  
October 17th, 1884.

To the Standard Drain Pipe Company, St. Johns, P. Q.:

I have much pleasure in stating that the Tile Pipes we have received from you for the sewers of St. Cuneconde have proved superior in quality and appearance to those imported from Scotland.

(Signed) J. ALPHONSE BEAUDRY, C. E.,  
Engineer in charge.

**CERTIFICATE FROM P. W. ST. GEORGE, ESQ., C. E.,**

CITY SURVEYOR, MONTREAL.

CITY SURVEYOR'S OFFICE,  
Montreal, May 7th, 1888.

W. C. Trotter, Manager Standard Drain Pipe Company, St. Johns:

DEAR SIR,—I herewith send you two tests made with your Pipes, on the 7th of March and of 3rd of May, 1888:

TESTING VITRIFIED CLAY PIPES, MARCH 7, 1888.						SMOKE TEST, MAY 3, 1888.	
Maker.	Size of Pipe.	No. Test.	Thickness.	Weight of Pipe in Lbs.	Breaking Wgt. in Lbs. to Square Inch.	Average.	Eight Lengths of Pipe and Three Junctions.
Standard Drain Pipe Co.	12 in.	1	1 inch	131 lbs.	5764 lbs.	} 5096 lbs.	—ST. JOHNS— Leaked at one small hole.
" " "	12 in.	2	1 inch	130 lbs.	5638 lbs.		
" " "	9 in.	3	3/4 inch	88 lbs.	4812 lbs.	} 4854 lbs.	—GARTCRAIG— Leaked at sockets and junction of three junctions, and leaked in three lengths of pipe.
" " "	9 in.		3/4 inch	88 lbs.	4676 lbs.		
" " "	9 in.		3/4 inch	88 lbs.	5904 lbs.		

Yours truly,  
PERCIVAL W. ST. GEORGE,  
City Surveyor.

**CERTIFICATE FROM R. P. FLEMING, ESQ., C. E.,**

ENGINEER TO THE SANITARY ASSOCIATION OF MONTREAL, AND M. C. S. C. E.

MONTREAL SANITARY ASSOCIATION,  
10th May, 1888.

W. C. Trotter, Esq., Manager Standard Drain Pipe Co., St. Johns, P. Q.:

DEAR SIR,—I have pleasure in testifying that I have tested specimens of your Vitrified Drain, both as regards crushing strength and freedom from kiln cracks and other defects, and found them highly satisfactory in these respects. A drain consisting of eight lengths of straight pipe and three junction pieces was submitted to the crucial smoke test, which the pipes withstood in a most satisfactory manner; while a second drain of inferior pipes from another factory,\* when submitted to the same test, showed numerous defects in the pipes through which the smoke escaped in large quantities.

I am, sir, yours very truly,  
(Signed) RICHARD P. FLEMING,  
M. Can. Soc. C. E., Engineer.

\* The drain of inferior pipes referred to were laid with Scotch pipes.—S. D. P. Co.

**FROM C. SPROATT, ESQ., C. E.,**

**CITY ENGINEER, TORONTO.**

CHIEF ENGINEER'S OFFICE,

Toronto, January 8th, 1889.

*Robt. Carroll, Esq., Agent Standard Drain Pipe Company:*

DEAR SIR,—The city will accept St. Johns pipe on the several city works subject to the same terms and conditions as other grades of pipe which are used on the city works are subjected to.

Yours truly,

(Signed) C. SPROATT,  
City Engineer.

---

**CERTIFICATE FROM JOHN L. STOKES, ESQ., C. E.,**

**ENGINEER IN CHARGE PARKDALE, (TORONTO.)**

OFFICE OF THE COUNTY ENGINEER AND SUPT. OF YORK ROADS,

County Court House, Toronto, Dec. 10th, 1888.

*To R. Carroll, Esq.:*

DEAR SIR,—In reply to your question *re* St. Johns Sewer Pipes, I beg to say that in the town of Parkdale I used about 8000 feet of said pipe, (15 inch), the same having been furnished by you to Contractor Farly, and was well satisfied with them. I consider them a good, serviceable pipe.

I am yours, &c.,

(Signed) JOHN L. STOKES,  
City Engineer.

---

**CERTIFICATE FROM JOHN MAGUIRE, ESQ.,**

**PRIVATE DRAIN INSPECTOR, TORONTO.**

CITY ENGINEER'S OFFICE, TORONTO.

*To the President Standard Drain Pipe Company, St. Johns:*

DEAR SIR,—In reply to your request as to my opinion of your make of Drain Pipe, I have much pleasure in stating that I have used them, and am using them daily. I consider them much better than any European Drain Pipe I have ever seen. As to their strength and durability, I have no hesitation in saying I believe them to be unwearable and indestructible.

Respectfully yours,

(Signed) JOHN MAGUIRE,  
Private Drain Inspector, Toronto, Ont.

---

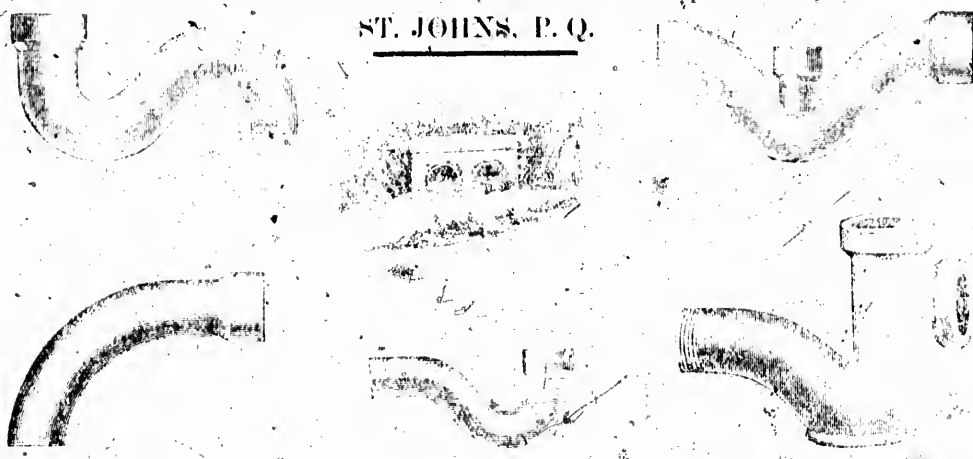
**The Standard Drain Pipe Company,**

**ST. JOHNS, P. Q.**

*W. C. Trotter, Pres. and Manager.*

# THE STANDARD DRAIN PIPE COMPANY,

ST. JOHNS, P. Q.



## CARRYING CAPACITY OF DRAIN PIPES. GALLONS PER MINUTE.

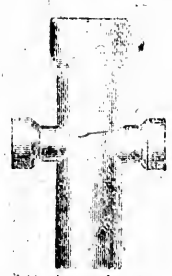
Inside Diameter.	3 inches Fall per 100 ft.	6 inches Fall per 100 ft.	9 inches Fall per 100 ft.	12 inches Fall per 100 ft.	24 inches Fall per 100 ft.	36 inches Fall per 100 ft.
4 inch Pipe.	47	66	84	93	131	163.
6 inch "	129	183	224	258	396	450
9 inch "	355	503	617	711	1006	1240
12 inch "	730	1033	1273	1468	2076	2554
15 inch "	1282	1818	2224	2464	3617	4467
18 inch "	2022	2860	3508	4045	5704	7047



Wind Guard.



Invert Pipe.



Double Square Fitting.



Pipes.



Single Square Fitting.

See Plan, St. Johns, P. Q.



