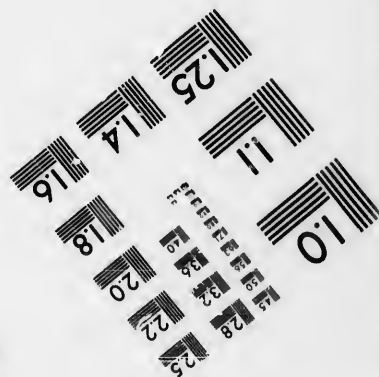
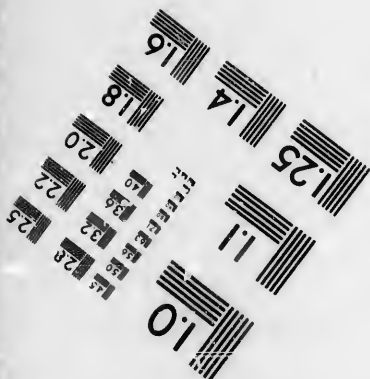
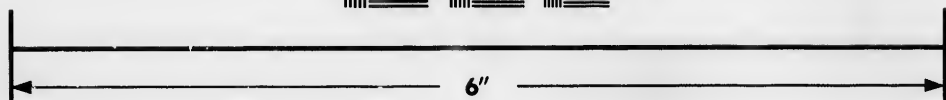
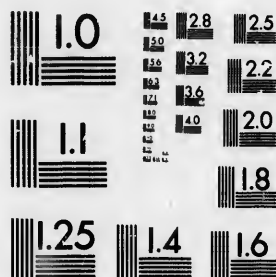


**IMAGE EVALUATION
TEST TARGET (MT-3)**



**Photographic
Sciences
Corporation**

23 WEST MAIN STREET
WEBSTER, N.Y. 14580
(716) 872-4503

**CIHM/ICMH
Microfiche
Series.**

**CIHM/ICMH
Collection de
microfiches.**



Canadian Institute for Historical Microreproductions / Institut canadien de microreproductions historiques

© 1986

Technical and Bibliographic Notes/Notes techniques et bibliographiques

The Institute has attempted to obtain the best original copy available for filming. Features of this copy which may be bibliographically unique, which may alter any of the images in the reproduction, or which may significantly change the usual method of filming, are checked below.

L'Institut a microfilmé le meilleur exemplaire qu'il lui a été possible de se procurer. Les détails de cet exemplaire qui sont peut-être uniques du point de vue bibliographique, qui peuvent modifier une image reproduite, ou qui peuvent exiger une modification dans la méthode normale de filmage sont indiqués ci-dessous.

- Coloured covers/
Couverture de couleur
- Covers damaged/
Couverture endommagée
- Covers restored and/or laminated/
Couverture restaurée et/ou pelliculée
- Cover title missing/
Le titre de couverture manque
- Coloured maps/
Cartes géographiques en couleur
- Coloured ink (i.e. other than blue or black)/
Encre de couleur (i.e. autre que bleue ou noire)
- Coloured plates and/or illustrations/
Planches et/ou illustrations en couleur
- Bound with other material/
Relié avec d'autres documents
- Tight binding may cause shadows or distortion along interior margin/
La reliure serrée peut causer de l'ombre ou de la distorsion le long de la marge intérieure
- Blank leaves added during restoration may appear within the text. Whenever possible, these have been omitted from filming/
Il se peut que certaines pages blanches ajoutées lors d'une restauration apparaissent dans le texte, mais, lorsque cela était possible, ces pages n'ont pas été filmées.

- Coloured pages/
Pages de couleur
- Pages damaged/
Pages endommagées
- Pages restored and/or laminated/
Pages restaurées et/ou pelliculées
- Pages discoloured, stained or foxed/
Pages décolorées, tachetées ou piquées
- Pages detached/
Pages détachées
- Showthrough/
Transparence
- Quality of print varies/
Qualité inégale de l'impression
- Includes supplementary material/
Comprend du matériel supplémentaire
- Only edition available/
Seule édition disponible
- Pages wholly or partially obscured by errata slips, tissues, etc., have been refilmed to ensure the best possible image/
Les pages totalement ou partiellement obscurcies par un feuillet d'errata, une pelure, etc., ont été filmées à nouveau de façon à obtenir la meilleure image possible.

Additional comments:
Commentaires supplémentaires:

[Printed ephemera] 1 sheet (verso blank)

This item is filmed at the reduction ratio checked below/
Ce document est filmé au taux de réduction indiqué ci-dessous.

10X	12X	14X	16X	18X	20X	22X	24X	26X	28X	30X	32X
									/		

The copy filmed here has been reproduced thanks to the generosity of:

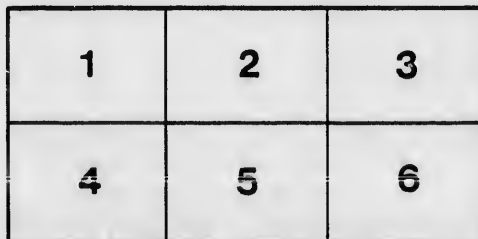
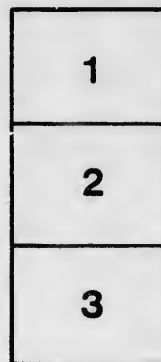
Manuscript Division
Public Archives of Canada

The images appearing here are the best quality possible considering the condition and legibility of the original copy and in keeping with the filming contract specifications.

Original copies in printed paper covers are filmed beginning with the front cover and ending on the last page with a printed or illustrated impression, or the back cover when appropriate. All other original copies are filmed beginning on the first page with a printed or illustrated impression, and ending on the last page with a printed or illustrated impression.

The last recorded frame on each microfiche shall contain the symbol \rightarrow (meaning "CONTINUED"), or the symbol ∇ (meaning "END"), whichever applies.

Maps, plates, charts, etc., may be filmed at different reduction ratios. Those too large to be entirely included in one exposure are filmed beginning in the upper left hand corner, left to right and top to bottom, as many frames as required. The following diagram illustrates the method:



L'exemplaire filmé fut reproduit grâce à la générosité de:

Division des manuscrits
Archives publiques du Canada

Les images suivantes ont été reproduites avec le plus grand soin, compte tenu de la condition et de la netteté de l'exemplaire filmé, et en conformité avec les conditions du contrat de filmage.

Les exemplaires originaux dont la couverture en papier est imprimée sont filmés en commençant par le premier plat et en terminant soit par la dernière page qui comporte une empreinte d'impression ou d'illustration, soit par le second plat, selon le cas. Tous les autres exemplaires originaux sont filmés en commençant par la première page qui comporte une empreinte d'impression ou d'illustration et en terminant par la dernière page qui comporte une telle empreinte.

Un des symboles suivants apparaîtra sur la dernière image de chaque microfiche, selon le cas: le symbole \rightarrow signifie "A SUIVRE", le symbole ∇ signifie "FIN".

Les cartes, planches, tableaux, etc., peuvent être filmés à des taux de réduction différents. Lorsque le document est trop grand pour être reproduit en un seul cliché, il est filmé à partir de l'angle supérieur gauche, de gauche à droite, et de haut en bas, en prenant le nombre d'images nécessaire. Les diagrammes suivants illustrent la méthode.

e
détails
s du
modifier
r une
Image

s

errata
to

pelure,
n à



32X

The
Governm
The
Fin
or chan
water in
and wat
Shuben
which s
struted
Dartmo
of Lake
William
bridge i
Great la
acadie, t
the side
discharg
caual or
Provinc
the navi
twenty-
the lette
said nav
annexed

Shuben
D
de

In
property
McNab,
104, pag
The
scription
1854, B

Provi
NOVA

To whom
It is
ment of
under th
tween th
1854, ha
Province
at Halifa
And
purtenam
Province

Regi

And
banks, Es
James F.

ABSTRACT OF TITLE.

15

The property owned by the Shubenacadie Canal Company was mortgaged to the British Government for a loan of £20,000 sterling,—Deed recorded at Halifax, in Book 54, page 236.

The property is thus described:—

First—All and singular the lands and lands covered with water forming and being the course or channel of the Shubenacadie canal, and all and the whole the lands and lands covered with water included in and being the five several parts, portions and sections into which the said canal and water communication or inland navigation called and known and denominated as or being the Shubenacadie canal, has been in the plans and specifications thereof divided and distributed, and which said canal or navigation was being formed or constructed, or intended to be formed or constructed, from the Dartmouth cove (so called) in the harbor of Halifax, to and through the Dartmouth lakes (so called) and through and over the portage called Port Wallace, to the south end of Lake Charles, and through the said Lake Charles, and the passage or valley therefrom, to Lake William, and through the said Lake William and Lake Thomas, and through the pass of Fletcher's bridge into Fletcher's lake, so called, and through the said lake and the pass therefrom into the Great lake, and through the said Great lake to or near the discharge of the river course of Shubenacadie, thence from and down the said channel or course of the said river, and along the banks and on the sides thereof, to the termination of the canal or navigation at the mouth of the said river, and the discharging point thereof into the Basin of Minas, according to the course and direction of the said canal or inland navigation, from the said Dartmouth cove in the harbor of Halifax through the Province to the Basin of Minas aforesaid, as drawn and delineated on the general map or plan of the navigation to the said indenture, annexed being an indenture of mortgage bearing date the twenty-seventh day of May, 1831, from the said Shubenacadie Canal Company, and marked with the letter A, as by reference thereto will appear. And further, as the first section or part of the said navigation was delineated and shown on a large scale on the map or plan thereof, thereto also annexed, and marked with the letter B, as by reference thereto will appear.

In June, 1850, a bill of foreclosure was filed in the name of Sir Rupert D. George, and the property was sold and conveyed by James W. Nutting, Master in Chancery, to the Honble. James McNab, Receiver General of the Province of Nova Scotia, by deed dated 11th June, 1851, Book 104, page 391.

The Honble. James McNab, Trustee for the Province, conveyed the property (by the same description) to the Inland Navigation Company, James F. Avery, President, by deed dated June 10th, 1854, Book 107, page 388.

Certificate by Lord Mulgrave.
COPY.

PROVINCE OF
NOVA SCOTIA. }

[L.S.]
MULGRAVE,

By His Excellency the Right Honorable

THE EARL OF MULGRAVE,
Lieutenant Governor and Commander in Chief in and over
Her Majesty's Province of Nova Scotia and its dependen-
cies, &c., &c., &c.

To whom it may concern:—

It is hereby certified that sufficient proof hath been given, to the satisfaction of the Government of this Province, that the Inland Navigation Company have complied with the terms imposed under the deed which transferred the property to them, by completing a water communication between the Harbor of Halifax and the Basin of Minas, which deed bears date June the tenth, A.D. 1854, having been executed by the Honble. James McNab, Receiver General and Trustee for the Province of Nova Scotia, of the one part, and the said Company of the other part, and is registered at Halifax in Book 107, page 388.

And further, I certify that the said property, lands, lands covered with water, works and appurtenances, and every part thereof, are free from any claim on the part of the Government of this Province.

Given under my hand and Seal at Arns this nineteenth day of February
in the twenty-fifth year of Her Majesty's reign and in the year of
our Lord one thousand eight hundred and sixty-two.

By His Excellency's command,

[Sd.] JOSEPH HOWE.

Registry of Deeds, Halifax, N. S.—I certify that on the 3rd day of March, A.D. 1862, at 11½
o'clock, a.m., this instrument was recorded in this office, in Libro 134, Folio 349.

[Sd.] GEO. C. WHIDDEN,
Registrar.

And on April 1st, 1870, the whole property passed (by the same description) to Lewis P. Fairbanks, Esq., who purchased for the sum of \$50,000 from the Lake and River Navigation Company, James F. Avery President,—deed recorded in Book 167, page 372.

