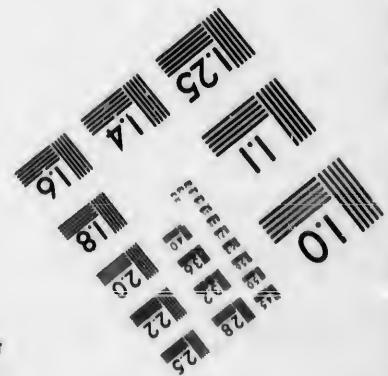
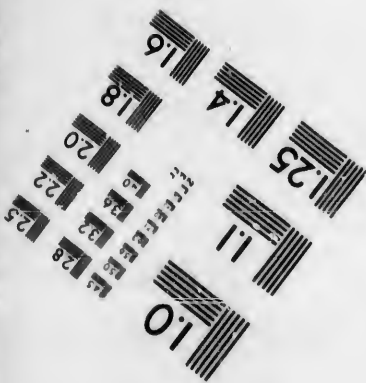
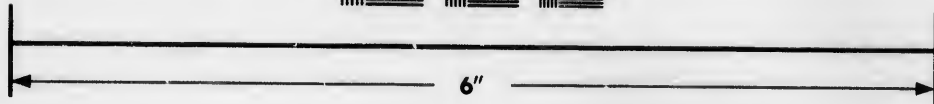
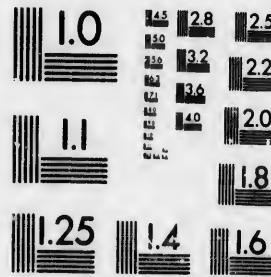


**IMAGE EVALUATION
TEST TARGET (MT-3)**



**Photographic
Sciences
Corporation**

23 WEST MAIN STREET
WEBSTER, N.Y. 14580
(716) 872-4503

**CIHM/ICMH
Microfiche
Series.**

**CIHM/ICMH
Collection de
microfiches.**



Canadian Institute for Historical Microreproductions / Institut canadien de microreproductions historiques

© 1986

The copy filmed here has been reproduced thanks to the generosity of:

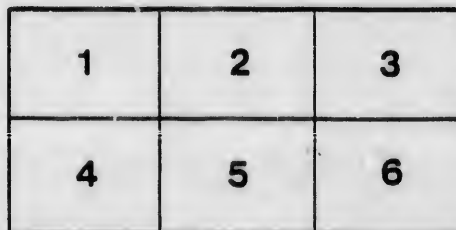
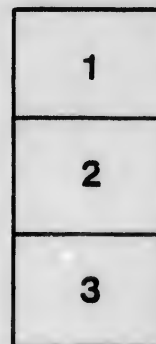
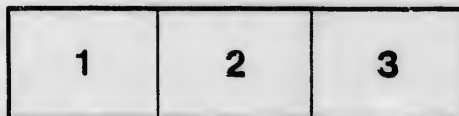
Department of Rare Books
and Special Collections,
McGill University, Montreal.

The images appearing here are the best quality possible considering the condition and legibility of the original copy and in keeping with the filming contract specifications.

Original copies in printed paper covers are filmed beginning with the front cover and ending on the last page with a printed or illustrated impression, or the back cover when appropriate. All other original copies are filmed beginning on the first page with a printed or illustrated impression, and ending on the last page with a printed or illustrated impression.

The last recorded frame on each microfiche shell contain the symbol \rightarrow (meaning "CONTINUED"), or the symbol ∇ (meaning "END"), whichever applies.

Maps, plates, charts, etc., may be filmed at different reduction ratios. Those too large to be entirely included in one exposure are filmed beginning in the upper left hand corner, left to right and top to bottom, as many frames as required. The following diagrams illustrate the method:



L'exemplaire filmé fut reproduit grâce à la générosité de:

Department of Rare Books
and Special Collections,
McGill University, Montreal.

Les images suivantes ont été reproduites avec le plus grand soin, compte tenu de la condition et de la netteté de l'exemplaire filmé, et en conformité avec les conditions du contrat de filmage.

Les exemplaires originaux dont la couverture en papier est imprimée sont filmés en commençant par le premier plat et en terminant soit par la dernière page qui comporte une empreinte d'impression ou d'illustration, soit par le second plat, selon le cas. Tous les autres exemplaires originaux sont filmés en commençant par la première page qui comporte une empreinte d'impression ou d'illustration et en terminant par la dernière page qui comporte une telle empreinte.

Un des symboles suivants apparaîtra sur la dernière image de chaque microfiche, selon le cas: le symbole \rightarrow signifie "A SUIVRE", le symbole ∇ signifie "FIN".

Les cartes, planches, tableaux, etc., peuvent être filmés à des taux de réduction différents. Lorsque le document est trop grand pour être reproduit en un seul cliché, il est filmé à partir de l'angle supérieur gauche, de gauche à droite, et de haut en bas, en prenant le nombre d'images nécessaire. Les diagrammes suivants illustrent la méthode.

455
GRAND EXHIBITION

OF THE

INDUSTRIAL PRODUCTS

OF UNITED CANADA,

UNDER THE AUSPICES OF THE

Board of Arts and Manufactures

FOR LOWER CANADA,

TO BE HELD IN THE

CITY OF MONTREAL.

ABOUT THE

First Week of August next,

ON THE OCCASION OF THE VISIT OF

H. R. H. THE PRINCE OF WALES,

AND THE INAUGURATION OF THE

VICTORIA BRIDGE.

OWLER & STEVENSON, Printers, 41 St. Francois Xavier Street,
Montreal.

LIST OF SUB-COMMITTEE,

Board of Arts and Manufacturer for Lower Canada.

J. W. DAWSON, Esq., L.L.D., Principal University of McGill College.....*President,*
 G. W. WEAVER, Esq.....*Vice President,*
 N. B. CORSE, Esq.....*Treasurer,*
 BROWN CHAMBERLIN, Esq., B.C.L.,*Secretary,*
 Hon. P. J. O. CHAUVEAU, L.L.D., Superintendent of Education for Lower Canada,
 DAVID BROWN, Esq., President of the Mechanics' Institute,
 ALFRED PERRY, Esq.,
 ALEXANDER MURRAY, Esq.,
 HENRY BULMER, Esq.,
 W. P. BARTLEY, Esq.,
 AUGUSTIN CANTIN, Esq.,
 WILLIAM RODDEN, Esq.

LIST OF COMMITTEES.

Finance Committee.

Henry Lyman, <i>Chairman</i>		The President
John Redpath		N. B. Corse
G. W. Weaver		Brown Chamberlin, B.C.L.

Building Committee.

David Brown, <i>Chairman</i>		The Treasurer
The President		H. Bulmer
The Vice President		A. Perry

Advertising, Printing, and Transportation Committee.

H. Bulmer		B. Chamberlin
		A. Murray

Prize List Committee.

G. W. Weaver		Alfred Perry
		W. Rodden

Fitting-up and Arrangement Committee.

A Perry		George Drummond
A. Cantin		Alex. Ramsay
G. W. Weaver		

CLASSIFIED LIST

OF

OBJECTS DESIRED FOR EXHIBITION.

Raw Materials and Products of the Soil, &c.

Minerals and Mining Products
Marble, Stone, Slate, Clays, Sands and Cements
Specimens of Canadian Geology
Woods, Gums and Barks of Canadian Forests
Skins of the Animals of Canada
Preserved Specimens of Canadian Animals or Plants
Vegetable and Animal Substances used in Manufactures
Substances used as Food
Meats, Fish, Fowl, and Products of the Field, in their various forms for
use and for Shipping

Chemical Manufactures.

Chemical Products and Preparations
Sugars, Syrups, Cordials, and Sauces
Confectionery, Preserved Fruits and Vegetables
Tobacco, Manufactured and Unmanufactured
Soaps and Candles, Plain and Fancy
Paints, Colours and Oils

Textile Fabrics.

Straw, Flax and Hemp, and the Manufactures thereof
Cotton, and the Manufactures thereof
Wool, and the Manufactures thereof, Cloths, Satinets, Flannels, Shawls,
Blankets, and Carpeting

Articles Manufactured of Linen and Silk, or Mixtures thereof, with
other Materials

Millinery and Wearing Apparel

Hats, Caps and Head Dresses

Leather and Leather Manufactures.

Morocco, Enamelled, Porpoise and Patent Leather

Sole, Upper, Skirting, Binding, Harness, Hose, Belt, Lace, Carriage-
Top and other Leathers

Harness and Saddlery

Trunks, Bellows, Belting and Hose

Boots, Shoes, Mocasins, Mits and Gloves

Manufactures of Wood, and Wood Combined with other Material.

Building Materials and Trimmings in Wood

Carpenters, Joiners, and Turners' Work

Cabinet Wares, and Articles of Furniture

Housekeeping Articles

Carriages and Sleighs, or parts thereof

Machinery, Implements and Hardware.

Agricultural, Horticultural, and Dairy Machinery and Implements

Mill Work and Engine Work

Railway, Hydraulic and other Machinery

Manufactures in Cast Iron, Plain and Ornamental generally, including
Stoves, Grates, Furniture, and Hardware

Manufactures in Iron, Light and Heavy, Plain and Ornamental, and
Wire Work.

Nails, Spikes, Brads, Tacks

Cutlery and Edge Tools

Manufactures in Brass, Copper, Zinc, Tin, Lead, and Composition of
Metals

Lamps, Chandaliers and Gas Fixtures

Castings of Iron, Brass and Composition of Metals

Fine Arts.

Sculpture and Statuary in Marble or other Material
 Paintings of every description in Oil or Water Colours
 Crayon and Pencil Work
 Daguerreotypes, Ambrotypes and Photographs
 Penmanship, Printing and Lithographing
 Mechanical, Architectural and Ornamental Drawing, designing and
 Mapping
 Models in Paper, Card, Wood, or other material
 Ornamental Work of any or various material
 Engraving and Wood Cutting, with proof in print
 Carving, and Carving and Gilding.
 Gilding, Silvering and Bronzing
 Painters' Work generally, on any material
 Philosophical and Mathematical Apparatus
 Clocks, Watches, and Jewellery
 Gold, Silver, and Plated Work
 Dentistry, and Dental and Surgical Instruments
 Musical Instruments.

Ladies Department.

Painting, Sketching, Drawing and Mapping, in Oil or Water Colour
 Crayon and Pencil Work and Penmanship
 Preserved Dried Leaves and Flowers of Canada
 Articles Useful and Ornamental, made of Straw, Hair, Feathers, Pa-
 per, Wax and Composition
 Lace, Fringes and Trimmings, in any material
 Knitting, Netting and Crotchet Work
 Worsted Work and Embroidery
 Quilts, Counterpanes, Curtains and Covers
 Needle Work in any material
 Ladies' and Children's Clothing
 Written Composition, Words with Music

Miscellaneous Articles.

Work on Marble and Stone for Building and Ornamental Purposes
 Bricks and Tiles for Building or other purposes
 Glass and Earthenwares
 Brush Makers and Comb Makers' Work

Bookbinders and Stationers' Work
 Paper and Stationery, Plain and Ornamental
 Furriers' Work, and Material Manufactured and Unmanufactured
 India Rubber Goods
 Indian Work and Curiosities

Any articles worthy of Exhibition will be received although not specially mentioned in the above Classification.

Arrangements are making for a proper representation of Agricultural and Horticultural products, a classification of which will be advertised at an early day.

Motive power will be furnished by the Committee, to which machinery may be attached and worked. Competing Machines and Implements will be subjected to suitable tests.

Local Committees will have set apart to them such space as may be necessary to make a creditable display of the products of their particular localities. Manufacturing establishments, Societies and extensive Exhibitors, may enjoy similar privileges by early intimation of their wishes.

It is hoped every exhibitor will put the price upon his goods, which may be the means of securing for him permanent advantages.

All entries must be made at the Secretary's Office, accompanied by a list and description of the articles intended for exhibition, on or before the 15th day of July next, and they must be delivered in Montreal on or before the 25th day of July next.

Every article exhibited must be the produce, growth or manufacture of the provinces of Canada, West or East. Cartage from the landing place in Montreal, will be paid on all articles consigned to the Secretary (B. Chamberlin, Esq.) Parties desirous of having freight of their articles paid by the Board, will please communicate as early as possible with the Local Committees, or with the Secretary.

A Permanent Exhibition Building of large size, and worthy of the occasion, has been commenced, and is now being rapidly erected.

The arrangement of articles in the Building will be in the hands of competent persons. The most trustworthy persons will remain in charge up to the closing of the Exhibition.

The most competent Judges will be appointed for the occasion, whose decision will be final.

Gold, Silver and Bronze Medals, with Diplomas and Certificates of Merit will be awarded for articles worthy thereof. An amount will be set apart in money to pay prizes on certain articles better adapted to such an arrangement.

In view of the great concourse of Visitors who will be present in Montreal on the occasion; and the opportunity thus afforded to exhibit the productions of the country to the best advantage, it is hoped that Artists, Manufacturers and Mechanics, and the proprietors of Mines, Quarries, Fisheries and Lumbering Establishments, will use every effort to make the Exhibition one creditable to the Province, and advantageous to themselves.

The co-operation of all Mechanics' Institutes, Societies of Art, Horticultural and Agricultural Societies, as well as Educational Establishments, is earnestly solicited, with the view of uniting all the available means of making this Exhibition as creditable to Canada as possible.

For particulars and more minute information will be furnished by a post-paid addressed to the Secretary, Office of the Board of Manufactures, Mechanics' Hall, Montreal.

Circulars of the time of opening &c., will be issued as early as possible.

Parties to whom the circular is addressed are requested to give it as wide publicity as possible.

B. CHAMBERLIN,

Secretary of the Board of Arts and Manufactures.

MECHANICS' HALL, MONTREAL,
April 25, 1860.

