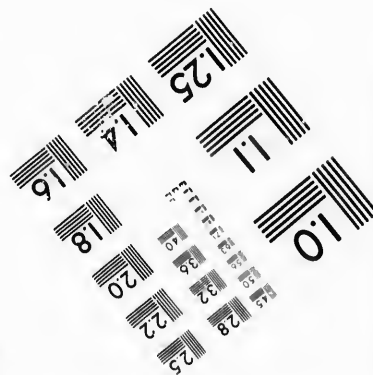
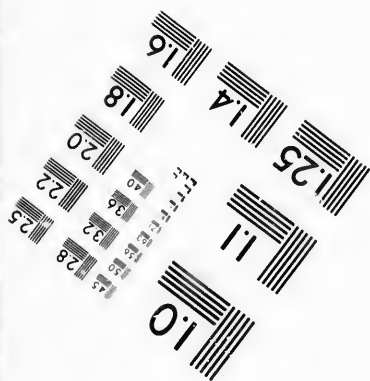
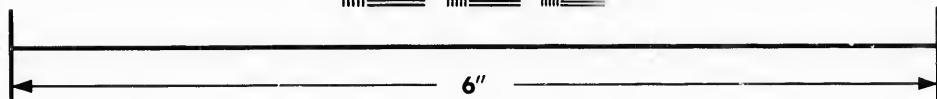
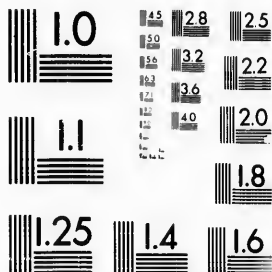


**IMAGE EVALUATION  
TEST TARGET (MT-3)**



**Photographic  
Sciences  
Corporation**

23 WEST MAIN STREET  
WEBSTER, N.Y. 14580  
(716) 872-4503

Canadi

28 25 22 20  
01

**CIHM/ICMH  
Microfiche  
Series.**

**CIHM/ICMH  
Collection de  
microfiches.**



Canadian Institute for Historical Microreproductions / Institut canadien de microreproductions historiques

**© 1987**

Technical and Bibliographic Notes/Notes techniques et bibliographiques

The Institute has attempted to obtain the best original copy available for filming. Features of this copy which may be bibliographically unique, which may alter any of the images in the reproduction, or which may significantly change the usual method of filming, are checked below.

L'Institut a microfilmé le meilleur exemplaire qu'il lui a été possible de se procurer. Les détails de cet exemplaire qui sont peut-être uniques du point de vue bibliographique, qui peuvent modifier une image reproduite, ou qui peuvent exiger une modification dans la méthode normale de filmage sont indiqués ci-dessous.

- Coloured covers/  
Couverture de couleur
- Covers damaged/  
Couverture endommagée
- Covers restored and/or laminated/  
Couverture restaurée et/ou pelliculée
- Cover title missing/  
Le titre de couverture manque
- Coloured maps/  
Cartes géographiques en couleur
- Coloured ink (i.e. other than blue or black)/  
Encre de couleur (i.e. autre que bleue ou noire)
- Coloured plates and/or illustrations/  
Planches et/ou illustrations en couleur
- Bound with other material/  
Relié avec d'autres documents
- Tight binding may cause shadows or distortion along interior margin/  
La reliure serrée peut causer de l'ombre ou de la distorsion le long de la marge intérieure
- Blank leaves added during restoration may appear within the text. Whenever possible, these have been omitted from filming/  
Il se peut que certaines pages blanches ajoutées lors d'une restauration apparaissent dans le texte, mais, lorsque cela était possible, ces pages n'ont pas été filmées.

- Coloured pages/  
Pages de couleur
- Pages damaged/  
Pages endommagées
- Pages restored and/or laminated/  
Pages restaurées et/ou pelliculées
- Pages discoloured, stained or foxed/  
Pages décolorées, tachetées ou piquées
- Pages detached/  
Pages détachées
- Showthrough/  
Transparence
- Quality of print varies/  
Qualité inégale de l'impression
- Includes supplementary material/  
Comprend du matériel supplémentaire
- Only edition available/  
Seule édition disponible
- Pages wholly or partially obscured by errata slips, tissues, etc., have been refilmed to ensure the best possible image/  
Les pages totalement ou partiellement obscurcies par un feuillet d'errata, une pelure, etc., ont été filmées à nouveau de façon à obtenir la meilleure image possible.

Additional comments: [Printed ephemera] [2] p.  
Commentaires supplémentaires:

This item is filmed at the reduction ratio checked below/  
Ce document est filmé au taux de réduction indiqué ci-dessous.

10X	12X	14X	16X	18X	20X	22X	24X	26X	28X	30X	32X
								/			

The copy filmed here has been reproduced thanks to the generosity of:

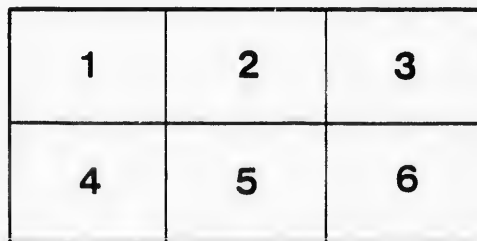
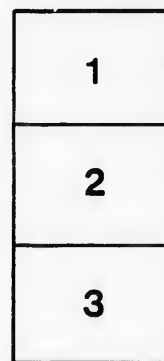
D. B. Weldon Library  
University of Western Ontario  
(Regional History Room)

The images appearing here are the best quality possible considering the condition and legibility of the original copy and in keeping with the filming contract specifications.

Original copies in printed paper covers are filmed beginning with the front cover and ending on the last page with a printed or illustrated impression, or the back cover when appropriate. All other original copies are filmed beginning on the first page with a printed or illustrated impression, and ending on the last page with a printed or illustrated impression.

The last recorded frame on each microfiche shall contain the symbol  $\rightarrow$  (meaning "CONTINUED"), or the symbol  $\nabla$  (meaning "END"), whichever applies.

Maps, plates, charts, etc., may be filmed at different reduction ratios. Those too large to be entirely included in one exposure are filmed beginning in the upper left hand corner, left to right and top to bottom, as many frames as required. The following diagrams illustrate the method:



L'exemplaire filmé fut reproduit grâce à la générosité de:

D. B. Weldon Library  
University of Western Ontario  
(Regional History Room)

Les images suivantes ont été reproduites avec le plus grand soin, compte tenu de la condition et de la netteté de l'exemplaire filmé, et en conformité avec les conditions du contrat de filmage.

Les exemplaires originaux dont la couverture en papier est imprimée sont filmés en commençant par le premier plat et en terminant soit par la dernière page qui comporte une empreinte d'impression ou d'illustration, soit par le second plat, selon le cas. Tous les autres exemplaires originaux sont filmés en commençant par la première page qui comporte une empreinte d'impression ou d'illustration et en terminant par la dernière page qui comporte une telle empreinte.

Un des symboles suivants apparaîtra sur la dernière image de chaque microfiche, selon le cas: le symbole  $\rightarrow$  signifie "A SUIVRE", le symbole  $\nabla$  signifie "FIN".

Les cartes, planches, tableaux, etc., peuvent être filmés à des taux de réduction différents. Lorsque le document est trop grand pour être reproduit en un seul cliché, il est filmé à partir de l'angle supérieur gauche, de gauche à droite, et de haut en bas, en prenant le nombre d'images nécessaire. Les diagrammes suivants illustrent la méthode.



# MILITIA ORDERS, 1900.

No. 228.

HEAD-QUARTERS, OTTAWA.

Tuesday, 2nd October.

Annual Training, 1900, return showing number of N.C.O. and men who have trained.

1. Militia Order 181 (3), of the 7th August, is amended by inserting after "N.C. Officers," the words "and men."

District Officers Commanding who have already forwarded their returns in compliance with this order will be good enough to furnish the additional information required, and District Officers Commanding who have not yet done so, will forward complete returns as soon as possible.

Leave.

2. Leave of absence, with permission to travel abroad, is granted as follows:—

Captain G. L. Money, 28th Regiment, from the 1st December to the 1st March, 1901.

Lieut. A. P. B. Nagle, R.C.R., from the 16th instant to the 14th proximo.

2nd Lieut. D. A. Brown, 49th Regiment, from the 1st instant to the 31st March, 1901.

By Order,

M. AYLNER, Colonel,  
Adjutant General.

No. 229.

Wednesday, 3rd October.

Authorised to be attached for Instruction

1. Officers are authorized to be attached for Instruction as follows:—

Station.	Rank and Name.	Corps.	Course.	Date to join.
Cavalry School, Toronto.....	Lieut. W. C. Brooks.....	2nd Dragoons...	Short.....	1st January.
" " ".....	2nd Lt. A. E. Taylor.....	G.G.B.G.....	Special.....	" October.
" " ".....	" E. H. Bowen.....	5th Dragoons...	Short.....	" "
" " ".....	" J. A. Thomson.....	1st Hussars.....	".....	" "
" " ".....	Capt. W. H. Emerson.....	52nd Regiment...	Equitation..	" January.
Artillery School, Quebec.....	Lieut. L. G. A. Charlebois...	6th Regt. C.A.	Short.....	" October.
" " ".....	" J. A. W. Dewers.....	" " ".....	".....	" "
No. 1 Regtl. Depot, R.C.R.I....	" J. R. Varcoe.....	33rd Regiment..	Special.....	" November.
" " ".....	2nd Lt. J. C. Johns.....	" " ".....	".....	" "
" " ".....	" C. McPhail.....	" " ".....	".....	" "
" " ".....	Lieut. H. W. Baker.....	28th ".....	".....	" "
" " ".....	2nd Lt. G. P. McMillan...	27th ".....	Short.....	" "
No. 2 " " ".....	" H. G. Pattee.....	G.G.F.G.....	".....	2nd January.
" " ".....	" W. C. Grant.....	35th Regiment..	".....	1st February.
No. 4 " " ".....	" E. Brewer.....	71st ".....	".....	" January.
" " ".....	" E. K. Eaton.....	68th ".....	Long.....	" "
No. 5 " " ".....	" R. Guay.....	89th ".....	Short.....	" October.

By Order,

M. AYLNER, Colonel,  
Adjutant General.

[105]

OVER.

No. 230.

Thursday, 4th October.

Result of medical  
examination.

1. With reference to M.O. 188 (4), of the 15th August, remove therefrom the name of Surgeon Captain E. A. Kirkpatrick, 66th Regiment, and marks credited to him. This Officer did not undergo this examination, and the marks obtained by Lieut. A. A. McCrimmon, A.M.S., were, through an inadvertence, repeated and credited to the former officer.

Forces.

2. It is notified for information that 17 Officers and 385 N.C. Officers and men of the 2nd (Special Service) Battalion, Royal Canadian Regiment, and 33 men of the various Colonial Corps, left Cape Town for Halifax, via St. Helena, on the 1st instant, by the S.S. "Idaho."

Casualties, Special  
Service Forces.

3. The following casualties in the Canadian Special Service Forces have occurred:—

*1st Battalion, Canadian Mounted Rifles:*

No. 334 Pte. A. B. Bing, died from enteric fever at Johannesburg on the 7th June.

*2nd (Special Service) Battalion, Royal Canadian Regiment:*

No. 7655 Private R. Lanconteur, 8th "Royal Rifles," is reported to have been killed en route to Cape Town to embark for Canada.

By Order,

M. AYLMER, Colonel,  
Adjutant General.

