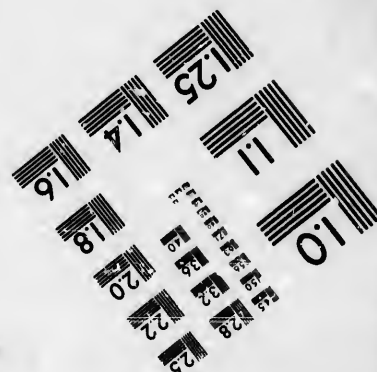
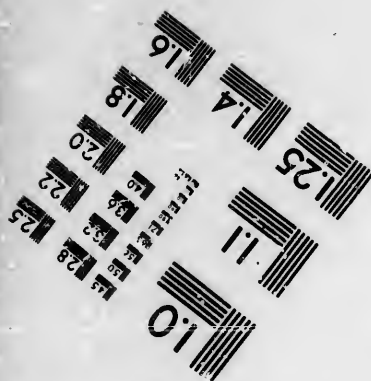
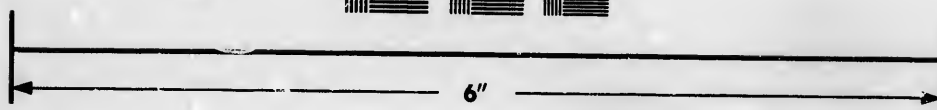
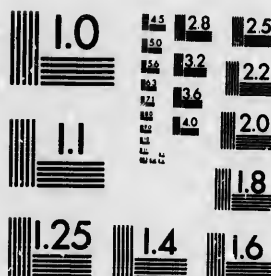


IMAGE EVALUATION TEST TARGET (MT-3)



Photographic
Sciences
Corporation

23 WEST MAIN STREET
WEBSTER, N.Y. 14580
(716) 872-4502

**CIHM/ICMH
Microfiche
Series.**

**CIHM/ICMH
Collection de
microfiches.**



Canadian Institute for Historical Microreproductions / Institut canadien de microreproductions historiques

© 1986

Technical and Bibliographic Notes/Notes techniques et bibliographiques

The Institute has attempted to obtain the best original copy available for filming. Features of this copy which may be bibliographically unique, which may alter any of the images in the reproduction, or which may significantly change the usual method of filming, are checked below.

L'Institut a microfilmé le meilleur exemplaire qu'il lui a été possible de se procurer. Les détails de cet exemplaire qui sont peut-être uniques du point de vue bibliographique, qui peuvent modifier une image reproduite, ou qui peuvent exiger une modification dans la méthode normale de filmage sont indiqués ci-dessous.

- ☐ Coloured covers/
Couverture de couleur
- ☐ Covers damaged/
Couverture endommagée
- ☐ Covers restored and/or laminated/
Couverture restaurée et/ou pelliculée
- ☐ Cover title missing/
Le titre de couverture manque
- ☐ Coloured maps/
Cartes géographiques en couleur
- ☐ Coloured ink (i.e. other than blue or black)/
Encre de couleur (i.e. autre que bleue ou noire)
- ☐ Coloured plates and/or illustrations/
Planches et/ou illustrations en couleur
- ☐ Bound with other material/
Relié avec d'autres documents
- ☐ Tight binding may cause shadows or distortion along interior margin/
La reliure serrée peut causer de l'ombre ou de la distorsion le long de la marge intérieure
- ☐ Blank leaves added during restoration may appear within the text. Whenever possible, these have been omitted from filming/
Il se peut que certaines pages blanches ajoutées lors d'une restauration apparaissent dans le texte, mais, lorsque cela était possible, ces pages n'ont pas été filmées.
- ☐ Additional comments:
Commentaires supplémentaires:

- ☐ Coloured pages/
Pages de couleur
- ☐ Pages damaged/
Pages endommagées
- ☐ Pages restored and/or laminated/
Pages restaurées et/ou pelliculées
- ☒ Pages discoloured, stained or foxed/
Pages décolorées, tachetées ou piquées
- ☐ Pages detached/
Pages détachées
- ☒ Showthrough/
Transparence
- ☐ Quality of print varies/
Qualité inégale de l'impression
- ☐ Includes supplementary material/
Comprend du matériel supplémentaire
- ☐ Only edition available/
Seule édition disponible
- ☐ Pages wholly or partially obscured by errata slips, tissues, etc., have been refilmed to ensure the best possible image/
Les pages totalement ou partiellement obscurcies par un feuillet d'errata, une pelure, etc., ont été filmées à nouveau de façon à obtenir la meilleure image possible.

This item is filmed at the reduction ratio checked below/
Ce document est filmé au taux de réduction indiqué ci-dessous.

10X	12X	14X	16X	18X	20X	22X	24X	26X	28X	30X	32X
			✓								

The copy filmed here has been reproduced thanks to the generosity of:

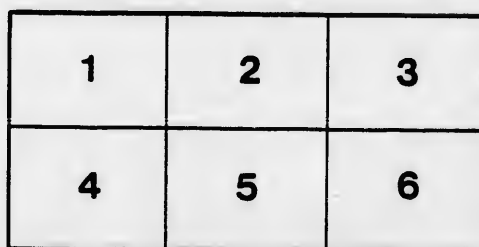
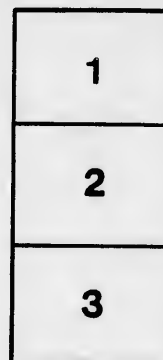
New Brunswick Museum
Saint John

The images appearing here are the best quality possible considering the condition and legibility of the original copy and in keeping with the filming contract specifications.

Original copies in printed paper covers are filmed beginning with the front cover and ending on the last page with a printed or illustrated impression, or the back cover when appropriate. All other original copies are filmed beginning on the first page with a printed or illustrated impression, and ending on the last page with a printed or illustrated impression.

The last recorded frame on each microfiche shall contain the symbol ➡ (meaning "CONTINUED"), or the symbol ▼ (meaning "END"), whichever applies.

Maps, plates, charts, etc., may be filmed at different reduction ratios. Those too large to be entirely included in one exposure are filmed beginning in the upper left corner, left to right and top to bottom, as many frames as required. The following diagrams illustrate the method:



L'exemplaire filmé fut reproduit grâce à la générosité de:

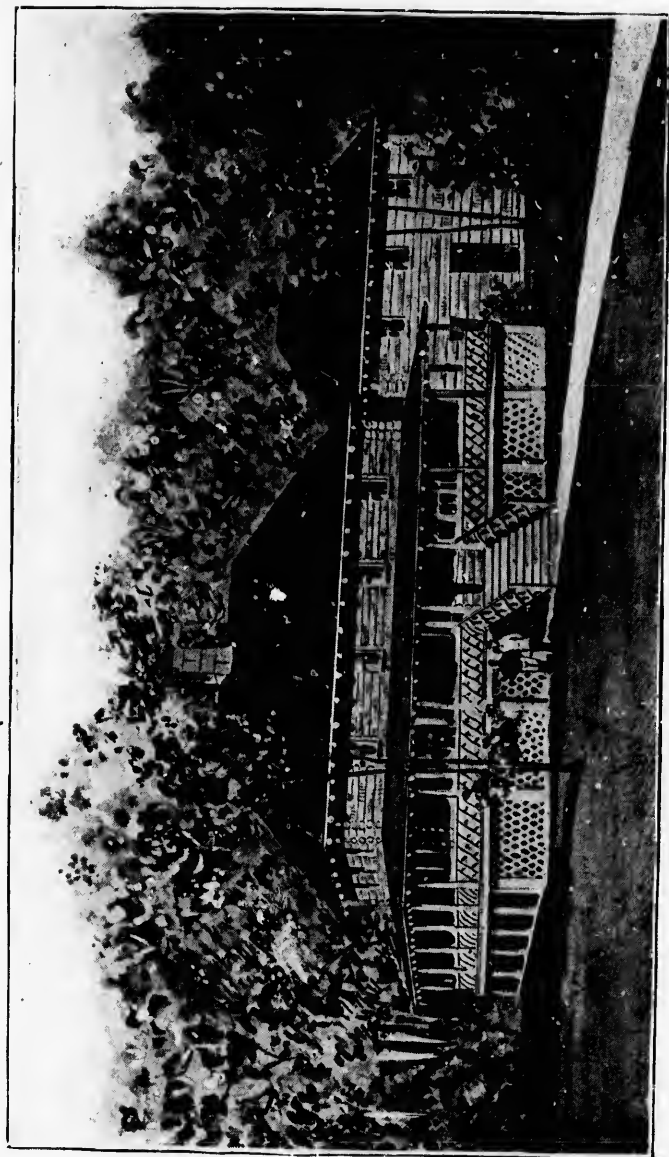
New Brunswick Museum
Saint John

Les images suivantes ont été reproduites avec le plus grand soin, compte tenu de la condition et de la netteté de l'exemplaire filmé, et en conformité avec les conditions du contrat de filmage.

Les exemplaires originaux dont la couverture en papier est imprimée sont filmés en commençant par le premier plat et en terminant soit par la dernière page qui comporte une empreinte d'impression ou d'illustration, soit par le second plat, selon le cas. Tous les autres exemplaires originaux sont filmés en commençant par la première page qui comporte une empreinte d'impression ou d'illustration et en terminant par la dernière page qui comporte une telle empreinte.

Un des symboles suivants apparaît sur la dernière image de chaque microfiche, selon le cas: le symbole ➡ signifie "A SUIVRE", le symbole ▼ signifie "FIN".

Les cartes, planches, tableaux, etc., peuvent être filmés à des taux de réduction différents. Lorsque le document est trop grand pour être reproduit en un seul cliché, il est filmé à partir de l'angle supérieur gauche, de gauche à droite, et de haut en bas, en prenant le nombre d'images nécessaire. Les diagrammes suivants illustrent la méthode.



CLUB HOUSE.

799

I 51

BY-LAWS

OF

The
Inglewood Fish and Game
Corporation.

REVISED JUNE 1, 1898.

PRESS OF SAMUEL USHER
BOSTON, MASS.

LIST OF OFFICERS.

President :

E. NOYES WHITCOMB,
BOSTON, MASS.

Vice-President :

LEROY S. BROWN,
BOSTON, MASS.

Secretary :

LEONARD B. KNIGHT,
MUSQUASH, N. B.

Treasurer and Assistant Secretary :

HENRY O. CUTTER,
BOSTON, MASS.

Directors :

ANDREW S. MARCH	Boston, Mass.
HENRY B. MOORE	Boston, Mass.
LEROY S. BROWN	Boston, Mass.
SAMUEL SHAW	Boston, Mass.
E. NOYES WHITCOMB	Boston, Mass.
J. NELSON PARKER	Boston, Mass.
HENRY E. COBB	Boston, Mass.
S. FREDK. HICKS	Boston, Mass.
JOSHUA KNIGHT	Musquash, N. B.

House Committee :

LEROY S. BROWN, 60 Commerce Street, Boston.
SAMUEL SHAW, 18 Beacon Street, Boston.
S. FREDK. HICKS, Bowker Street, Boston.

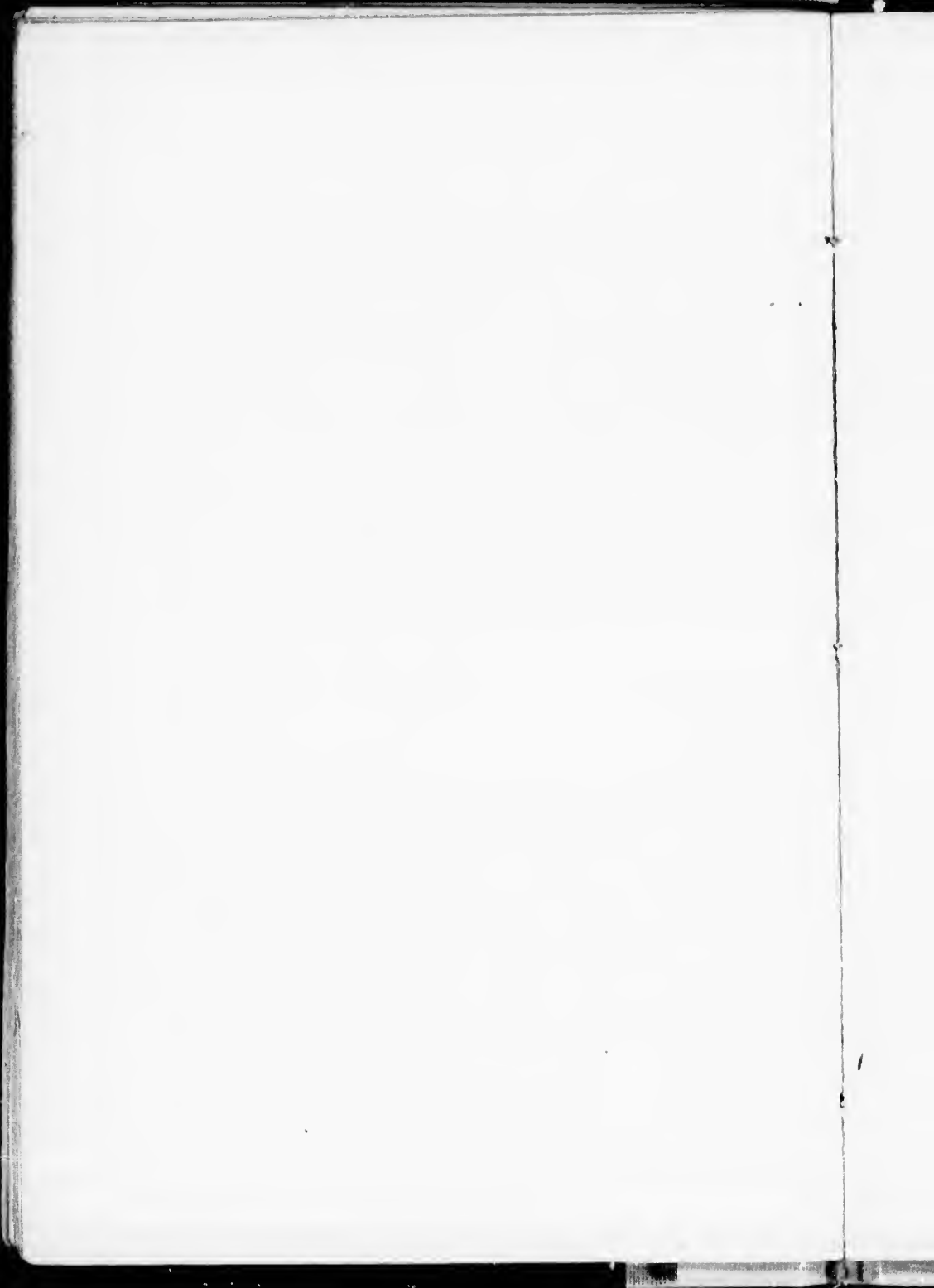
INGLEWOOD MANOR.

This preserve, including its many lakes and streams, was granted from the Crown in 1836 to Moses H. Perley, and he, being an admirer of Sir Walter Scott, named these lakes from those mentioned in his writings, namely, "Belvidere," "Loch Alva," "Robin Hood," "Little John," "Brittain," "Radcliff," "Menzie," "Rostherne Mere," etc. Mr. Perley lost his life in Labrador, and in 1839 the estate was deeded to E. Barlow & Sons, of St. John, N. B., and by them to Dempsy, Frost & Co., Liverpool, Eng., in 1846, who, in 1847, exchanged it for real estate in the city of Liverpool, Eng., with Herman E. Talk, Esq., a salt merchant, who, up to almost the present time, was in active business in that city. He it was who built the Manor House, situated in the southwestern part of the manor.

The next owners were Dresser & Co. in 1849, and from them it passed to the present owners, the heirs of J. E. Knight, Messrs. Joshua and Leonard B. Knight.

No cyclones or fires have ever invaded this charmed spot, and it is still a virgin forest of spruce, pine, balsam, fir, and cedar.

In about the centre of the preserve, ten miles from two railways, on the westerly bank of Loch Alva, stands the commodious Club House.



PROSPECTUS.

The property, situated on the Musquash River, in the counties of St. John and Kings, in the province of New Brunswick, D. C., contains about 38,000 acres of land, with twenty-six lakes and connecting streams.

The main Club House is 25 ft. x 50 ft., has a dining-room and sitting-room, with large open fireplace in each, and second story devoted to large and well-ventilated chambers; adjoining the dining-room is a commodious cooking camp with guides' rooms and ice-house. In close proximity are camps No. 1, suitable for two persons; Nos. 2 and 3 will care for six each comfortably. These, together with a large ballasted wharf and boathouse, comprise the buildings at this point, situated about halfway on Loch Alva, one of the most beautiful sheets of water in New Brunswick. It is some nine miles long, and one to two miles wide, surrounded by a charming rolling country covered with a growth of hard wood, spruce and fir, making one of the most delightful and picturesque camps imaginable.

Within easy access are some of the many lakes, namely, Deer, Eagle, Rostherne Mere, Brittain, Little John, Robin Hood, West, Turtle, and Labrador; near this latter lake is the ideal sportsman's camp.

While nature has provided and well stocked these waters, the club, since taking possession, has placed in the streams and springs 200,000 landlocked salmon from Grand Lake stream, 205,000 square-tail trout, 25,000 English brown trout; nearly every year from

1892 to 1893 sea salmon fry have been distributed, aggregating 398,200.

Extensive fish ways, costing some \$1,200, were constructed by the club at Knight's dam on the Musquash River, to give the salmon access to and from the sea. This river is said to have been, years ago, one of the best for salmon on the coast; we should have in two or three years salmon fishing on our preserve.

The stocking with landlocked from Grand Lake is already felt, the largest taken weighing $4\frac{1}{4}$ pounds; square-tail trout weighing 4 pounds have been caught.

The forests furnish all the game usually found in Maine or New Brunswick. Partridge, duck, yellow-legs, and small game abound.

The annual stockholders' meeting is held at the Club House on the first Wednesday in June.

All lakes inaccessible by boat or canoe are reached by fine trails. All lakes of importance are provided with boats and canoes.

Tents and folding and light canoes and full camp outfits are free to members.

The preserve can be reached from Boston by the Boston & Maine Railroad, also by the International Steamship Company's fine line of steamers. Guests can leave camp in the morning and arrive in Boston the same evening; there also is a fast down train, leaving Boston in the morning (see time-table), arriving at Westfield in the evening, so that an early start could be made for camp the following morning if desired. It takes about three hours to reach camp from Westfield on New Brunswick Railway, and the same time from Musquash station on the Shore Line Railway.



LABRADOR CAMP, NO. 2.

INCORPORATION.

THE INGLEWOOD FISH AND GAME CORPORATION is incorporated under the laws of the Province of New Brunswick, by which the liability of each member is limited to the par value of the stock held by him.

The capital stock of the Corporation is \$20,000, divided into 400 shares of \$50 each. Each member shall be entitled to any number of shares, and one share only shall be assessed and voted on at any meeting of the stockholders, and to all the rights and privileges of the Corporation, subject to the following By-Laws and such amendments and additions thereto as may hereafter be made.

BY-LAWS.

OFFICERS.

I. The property and affairs of the Corporation shall be managed by a Board of nine Directors, elected annually by ballot from among the shareholders, and the Directors shall elect from their number a President and a Vice-President. Vacancies in the Board may be filled by the remaining Directors, the substitute holding office until the next annual general meeting. Qualified shareholders may vote by proxy, whose appointment shall be in writing and filed with the Secretary.

ANNUAL MEETINGS.

II. The annual general meeting of the shareholders shall be held on the first Wednesday in June in each year, at the Club House of the Corporation, Inglewood Manor, Kings County, New Brunswick, to hear the annual report, to elect Directors, and to do such other business as may properly come before the meeting.

SPECIAL MEETINGS.

III. Special general meetings may be called at any time by the President, or in his default by any two Directors, or in their default by any ten shareholders.

QUORUM.

IV. At meetings of the Directors three, and at meetings of the shareholders nine, shall constitute a

quorum, but any smaller number in either case may adjourn from time to time.

ORDER OF BUSINESS.

V. The order of business shall be as follows : —

1. Reading the minutes of the preceding meeting.
2. Reports from committees.
3. Reports from Treasurer.
4. Communications and reports from the President.
5. Unfinished business.
6. Miscellaneous business.

NOTICE OF MEETINGS.

VI. Notice of the time and place for holding any meeting of the shareholders shall be given at least fourteen days previously thereto in some newspaper in the county where the chief office or place of business is situate, and a copy of the same shall be mailed by the Secretary to each member at least ten days previous to date of such meeting. Notice of any Directors' meeting shall be mailed by the President to each Director at least five days before the date of such meeting. All notices of meetings shall specify the object for which such meeting is called.

DUTIES OF PRESIDENT.

VII. The President shall have the general direction and supervision of the affairs of the Corporation, subject to such regulations and orders as the Board of Directors may from time to time make; he shall preside at all meetings; in his absence the Vice-President shall serve, and in the absence of both the Board shall appoint one of the Directors as President *pro*

tem. He shall see that all yearly and other reports required from the Corporation by the proper authority are duly prepared and transmitted; that all orders and resolutions in respect to the business of the Corporation are duly executed; and that the duties imposed by the Corporation on the officers are properly performed. He may, during the intervals of the meetings, for sufficient cause, by and with the consent of the House Committee, suspend the power of any officer until the next meeting of Directors and shareholders, when he shall report the fact and cause of such suspension. He shall, together with the Treasurer, sign all bonds, deeds, certificates of stock, and all contracts other than those appertaining to the House Committee.

SECRETARY.

VIII. The Directors shall annually elect a Secretary, who shall keep all records, books, and documents of the Corporation, other than those appertaining to the Treasurer; he shall give notice of all meetings, and communicate to officers, agents, and committees all resolutions and orders affecting them in the discharge of their duties. The Directors may elect an Assistant Secretary, who may or may not be a resident of the Province of New Brunswick.

TREASURER.

IX. The Directors shall likewise elect a Treasurer, who shall receive all moneys collected for or accruing to the Corporation; he shall keep correct books of account of all moneys received and disbursed by him, and at the annual meeting of the Corporation shall

present a detailed statement of his receipts and expenditures since the last annual meeting at which he rendered his account, and shall also show the balance remaining in his hands.

No money shall be paid by the Treasurer except on bills approved by the House Committee, to whom he shall submit his accounts when called on by them. He shall, with the President, sign all bonds, deeds, and certificates of stock, and all contracts as set forth in By-Law No. 7.

The Secretary and Treasurer may or may not be Directors, and the offices of Secretary and Treasurer may be combined and filled by the same person.

HOUSE COMMITTEE.

X. The Directors shall name from their number a House Committee of three, who shall prepare a schedule of such charges for board, etc., as in their judgment shall be equitable for each member to pay while at the Club House, and who shall have charge of all matters relating to the buildings of the Corporation wherever located. They shall select, hire, and appoint, and displace and replace all servants, and regulate the pay of each. They shall direct and control the domestic affairs of the Club House and all matters relating thereto, and make all necessary repairs, alterations, and additions to the buildings and other property of the Corporation.

SPECIAL COMMITTEES AND AUDITORS.

XI. The Directors may also name committees from amongst themselves to attend to such matters as may need special supervision or attention; and they shall

appoint three auditors whose audit of the books and affairs of the Corporation shall be submitted to the shareholders at the annual general meeting.

ANNUAL DUES.

XII. For the maintenance and support of the Corporation an assessment may be levied on the first day of March in each year to the amount of twenty-five (25) dollars on each member, payable within thirty days; and, if necessary, a further assessment may be levied on the first day of October in each year, payable as aforesaid.

Should any member neglect to pay any assessment within the time limited as aforesaid, his membership may be declared lost, and his shares forfeited to the Corporation by a vote of a majority of the stockholders present at any general meeting.

In case of any such declaration as aforesaid, a new member or members may be elected at the same or subsequent general meeting, and in manner aforesaid, to fill the vacancy so caused, and new stock may be issued in place of that so declared forfeited. The liability of members to be assessed for the purposes aforesaid shall attach to membership in the Corporation, and shall be a liability upon all members of the Corporation, independent of and in addition to the liability at law in respect of unpaid stock.

GUESTS.

XIII. Each member may be accompanied by a friend as the guest of such member, but the same person shall not be permitted as a guest to visit the Club House or grounds oftener than once in two years.

QUANTITY OF FISH.

XIV. No member or guest shall, during or after any visit, take or cause to be taken from the Corporation premises more than twenty-five pounds of fish. No member shall kill in any one day more than thirty-five fish, or keep a trout less than six inches, or a land-locked salmon less than ten inches in length.

CHARGES.

XV. Every member shall, before leaving the Club House, pay to the person for that purpose selected such charges for guides, etc., for himself and for any friend accompanying him, as shall be regulated by the House Committee. Each member shall be responsible for the acts and debts of his guest while on the grounds of the Corporation.

EXTINGUISHING FIRES.

XVI. Any member or members of the Corporation found guilty of leaving a camp without having first thoroughly extinguished all fires made by them shall be liable to a penalty of not less than twenty dollars and not more than two hundred dollars for each and every offense, and in addition shall be liable for all damages resulting from their neglect.

DAMAGE TO PROPERTY.

XVII. Members shall be personally responsible for all damages to boats and other property of the Corporation while being used by them or their guests.

MALFEASANCE IN OFFICE, ETC.

XVIII. In case of malfeasance in office of any officer, or of conduct on the part of any member injurious to the best interests or harmony of the Corporation, or in case of any violation of any of the By-Laws, it shall be the duty of the officers of the Corporation, on application of three members, in writing, to any of said officers, stating the cause of complaint, and specifying the charges against said officer or member, immediately thereafter to serve a copy of said charges, and convene the shareholders for the purpose of investigating the same. Should the majority of members present find said officer or member guilty of said charges, such officer or member may be expelled from the Corporation by a vote of the majority of the members present. In case of expulsion, the members so expelled shall forfeit all privileges in the Corporation, and their stock shall revert to the Corporation.

DISPOSAL OF STOCK.

XIX. Any member, or the legal representatives of any deceased member, desiring to dispose of their stock, shall offer the same at the market value to the Board of Directors first. If they fail to purchase, then outside, provided the name of the purchaser shall be submitted in writing to one of the officers of the Corporation, and his election as a member secured in conformity with By-Law 20.

ELECTION OF MEMBERS.

XX. No person shall be admitted a member of the Corporation, or entitled to the rights and privileges as such, unless he be the owner of one share, nor unless

he shall have been first proposed and seconded by two other members, and shall have been duly elected by a majority of the votes at any meeting of the Directors.

TRANSFER OF STOCK.

XXI. Shares in this Corporation shall be transferable by recording in the Transfer Book of the Corporation as provided by law, but no transfer shall be valid until the person making the same shall have fully paid all calls thereon, and shall have discharged all indebtedness due from him to the Corporation.

GENERAL.

XXII. Authority over all matters not embraced in these By-Laws is vested in the Directors.

ABUSE OF PRIVILEGES.

XXIII. There shall be no target shooting on the grounds of the Corporation, and no loaded firearms shall be allowed inside the Club House.

AMENDMENTS OF BY-LAWS.

XXIV. These By-Laws may be amended at any meeting by a vote of two thirds of the members present at a general meeting of the Corporation, provided that a notice of the motion to amend and of the proposed amendment shall have been sent to each member of the Corporation.

NUMBER OF SHARES OF STOCK THAT MAY BE HELD BY MEMBERS.

XXV. Each member may hold any number of shares, but can vote only upon one share, and shall be

assessed upon one share only for the purpose of enabling said member to vote.

CHIEF PLACE OF BUSINESS.

XXVI. The chief place of business of THE INGLEWOOD FISH AND GAME CORPORATION shall be the Parish of Musquash, in the County of St. John, New Brunswick.



CAMP NO. 1, LOCH ALVA.

HOUSE COMMITTEE CIRCULAR.

The Club House will be open May 20. Usual charge for board, \$1.50 per day. Guides, \$2.00 per day. Camps, boats, and canoes are free for members and guests.

Members should report to the Treasurer their intended visit to the preserve at least ten days in advance, stating number in the party and guides required, that guides may be secured and arrangements made for conveyance to camp, that their convenience and comfort may be assured.

Arrangements for transfer have been made with George Crawford at Westfield, and J. & L. B. Knight at Musquash.

The charge for transportation to the lake (including baggage) from Westfield or Musquash, — one person, \$2.50; two persons, \$3.00; three or more, \$1.00 each. Guests will be met by a boat at the lake and taken to camp. Those going via Westfield will take Boston & Maine R.R. (Eastern Division). Those via Musquash can go by rail or International S. S. Line to St. John; thence to Musquash, via Shore Line R. R. Excursion rates, May 1 to November 1.

A charge of 50 cents per day will be made for each person over twelve years of age accompanying a member as guest to the Club preserve. Members taking guests must report to the Treasurer, on their return, the time spent on the preserve. This is necessary to verify the Warden's report.

Members will be permitted to erect buildings on the preserve at their own expense, provided application for such privilege, stating location desired, shall be presented in writing to the Board of Directors, and meets with their approval.

During the close season for game the use of firearms on the Club property is positively forbidden, and the Deputy Warden is instructed to enforce this rule.

The open season for moose, caribou, deer, etc., is from September 1 to January 1.

Partridge, snipe, woodcock, from September 20 to January 1.

Wild geese, brant, and black duck, from September 1 to December 1.

Open season on fish from May 1 to September 15.

The specified charges are subject to change, as occasion requires.

Members will please confer with the House Committee in regard to dutiable goods.

For further information, inquire of the Treasurer.



A DAY'S CATCH.

LIST OF MEMBERS.

Avery, Samuel P., 368 Fifth Avenue, New York.
Atwood, Q. A., 120 Kingston Street, Boston.
Ayer, F. W., Exchange Street, Bangor, Me.

Brigham, Est. of Henry P., 16 Central Wharf, Boston.
Blake, Thomas D., 185 Devonshire Street, Boston.
Brown, Leroy S., Chamber of Commerce, Boston.
Brown, Albert C., 89 South Market Street, Boston.
Brown, Albion H., Chamber of Commerce, Boston.
Barker, Hon. Fred. E., St. John, N. B.
Barnhill, George E., Fairville, St. John, N. B.
Bates, Jacob P., 680 Washington Street, Boston.
Brigham, Charles, 24 Mt. Vernon Street, Boston.
Barnhill, A. P., St. John, N. B.

Chipman, John D., St. Stephen, N. B.
Cobb, Hon. Henry E., Newton, Mass.
Cobb, Morton E., 95 Milk Street, Boston.
Cutter, Henry O., 5 Tremont Street, Boston.
Cabot, Francis Elliot, 55 Kilby Street, Boston.
Crocker, Hon. George G., 19 Milk Street, Boston.

Dunham, William H., N. E. Conservatory of Music, Boston,

Evans, John, 77 Huntington Avenue, Boston.

Follett, William J., 154 Federal Street, Boston.
Faulkner, John A., Lowell, Mass.
Foote, E. H., 31 Commercial Street, Boston.
Finlay, George D., 111 First Street, Jersey City, N. J.

Ganong, G. W., St. Stephen, N. B.

Hopkins, Col. Charles A., 95 Milk Street, Boston.

Houston, James A., 477-481 Washington Street, Boston.

Houston, Ernest, 477-481 Washington Street, Boston.

Houston, William C., 477-481 Washington Street, Boston.

Hearn, Edwin R., 158 West 77th Street, New York.

Hicks, S. Frederick, Bowker Street, Boston.

Hunt, Henry H., 166 Devonshire Street, Boston.

Holly, A. B., St. John, N. B.

Hersey, Ira G., 166 Devonshire Street, Boston.

Hollingsworth, Z. T., 28 High Street, Boston.

Jouett, I. W., 680 Washington Street, Boston.

Knight, Joshua, Musquash, N. B.

Knight, Leonard B., Musquash, N. B.

Kendall, Ralph M., 374 Washington Street, Boston.

Kilbourne, James, Columbus, Ohio.

Kidder, Francis M., 79 Chauncy Street, Boston.

Leeson, Robert A., 226 Devonshire Street, Boston.

March, Andrew S., 125 Kingston Street, Boston.

Mason, James H., 75 Cornhill, Boston.

Mitchell, William H., Province Court, Boston.

Moore, George C., North Chelmsford, Mass.

Moore, Henry B., Chamber of Commerce, Boston.

Marshall, L. C., East Walpole, Mass.

McIntosh, David, 166 Devonshire Street, Boston.

Neill, Col. A. E., Calais, Me.

Potter, J. S., 24 Commerce Street, Boston.

Pew, John J., Gloucester, Mass.

Pray, William, 166 Devonshire Street, Boston.
 Parker, J. Nelson, 680 Washington Street, Boston.
 Porter, Henry K., 66 Beverly Street, Boston.
 Pierce, Henry B., 19 Commercial Street, Boston.

Russell, Est. of D. W., 113 Devonshire Street, Boston.
 Russell, Charles, 103 State Street, Boston.
 Rimbach, George H., Crawford House, Boston.
 Rivers, William M., St. John, N. B.

Shaw, Samuel, 156 Boylston Street, Boston.
 Strout, A. A., 53 State Street, Boston.
 Stewart, John, Woodstock, N. B.
 Sparrow, Herbert F., 62 Hampshire Street, Cambridge, Mass.
 Stetson, Franklin, St. John, N. B.
 Slack, Rev. Ezra A., Brookline, Mass.
 Stanley, Sumner C., Lawrence, Mass.

Turner, Edward C., Arlington, Mass.
 Tolman, George, Brockton, Mass.

Vose, Charles, 28 High Street, Boston.

Whitlock, Julius T., St. Stephen, N. B.
 Whitcomb, E. Noyes, 53 Wareham Street, Boston.
 Willard, Erastus, 56 Summer Street, Boston.
 Warner, Gen. D. B., St. John, N. B.
 Whiting, Fred. E., Boston Herald, Boston.
 Wingate, James I., 336 Boylston Street, Boston.
 Wingate, Frank E., 336 Boylston Street, Boston.
 Willcutt, Lyman D., 166 Devonshire Street, Boston.
 Wright, Henry E., 154 Castle Street, Boston.
 Walker, George W., 31 Union Street, Boston.

Yerxa, Henry D., 680 Washington Street, Boston.

