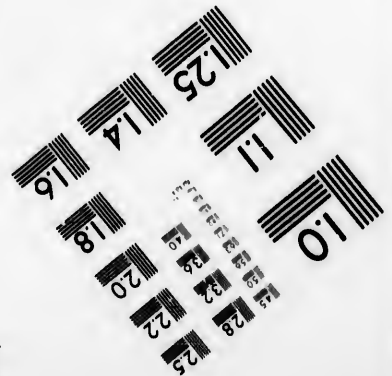
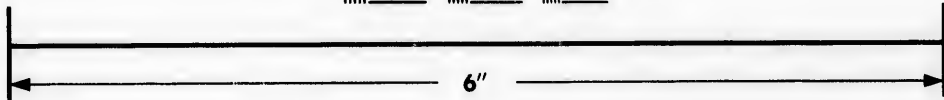
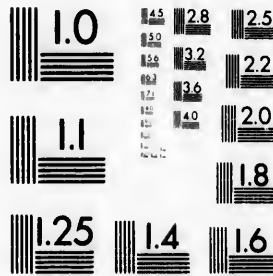


**IMAGE EVALUATION  
TEST TARGET (MT-3)**



**Photographic  
Sciences  
Corporation**

23 WEST MAIN STREET  
WEBSTER, N.Y. 14580  
(716) 872-4503

1.5 28 25  
32 22  
20  
8

**CIHM/ICMH  
Microfiche  
Series.**

**CIHM/ICMH  
Collection de  
microfiches.**



**Canadian Institute for Historical Microreproductions / Institut canadien de microreproductions historiques**

10

**© 1981**

Technical and Bibliographic Notes/Notes techniques et bibliographiques

The Institute has attempted to obtain the best original copy available for filming. Features of this copy which may be bibliographically unique, which may alter any of the images in the reproduction, or which may significantly change the usual method of filming, are checked below.

L'Institut a microfilmé le meilleur exemplaire qu'il lui a été possible de se procurer. Les détails de cet exemplaire qui sont peut-être uniques du point de vue bibliographique, qui peuvent modifier une image reproduite, ou qui peuvent exiger une modification dans la méthode normale de filmage sont indiqués ci-dessous.

- Coloured covers/  
Couverture de couleur
- Covers damaged/  
Couverture endommagée
- Covers restored and/or laminated/  
Couverture restaurée et/ou pelliculée
- Cover title missing/  
Le titre de couverture manque
- Coloured maps/  
Cartes géographiques en couleur
- Coloured ink (i.e. other than blue or black)/  
Encre de couleur (i.e. autre que bleue ou noire)
- Coloured plates and/or illustrations/  
Planches et/ou illustrations en couleur
- Bound with other material/  
Relié avec d'autres documents
- Tight binding may cause shadows or distortion  
along interior margin/  
La reliure serrée peut causer de l'ombre ou de la  
distortion le long de la marge intérieure
- Blank leaves added during restoration may  
appear within the text. Whenever possible, these  
have been omitted from filming/  
Il se peut que certaines pages blanches ajoutées  
lors d'une restauration apparaissent dans le texte,  
mais, lorsque cela était possible, ces pages n'ont  
pas été filmées.
- Additional comments:/  
Commentaires supplémentaires:

- Coloured pages/  
Pages de couleur
- Pages damaged/  
Pages endommagées
- Pages restored and/or laminated/  
Pages restaurées et/ou pelliculées
- Pages discoloured, stained or foxed/  
Pages décolorées, tachetées ou piquées
- Pages detached/  
Pages détachées
- Showthrough/  
Transparence
- Quality of print varies/  
Qualité inégale de l'impression
- Includes supplementary material/  
Comprend du matériel supplémentaire
- Only edition available/  
Seule édition disponible
- Pages wholly or partially obscured by errata  
slips, tissues, etc., have been refilmed to  
ensure the best possible image/  
Les pages totalement ou partiellement  
obscurcies par un feuillet d'errata, une pelure,  
etc., ont été filmées à nouveau de façon à  
obtenir la meilleure image possible.

This item is filmed at the reduction ratio checked below/  
Ce document est filmé au taux de réduction indiqué ci-dessous.

10X	14X	18X	22X	26X	30X
<input type="checkbox"/>	<input type="checkbox"/>	<input type="checkbox"/>	<input checked="" type="checkbox"/>	<input type="checkbox"/>	<input type="checkbox"/>
12X	16X	20X	24X	28X	32X

The copy filmed here has been reproduced thanks to the generosity of:

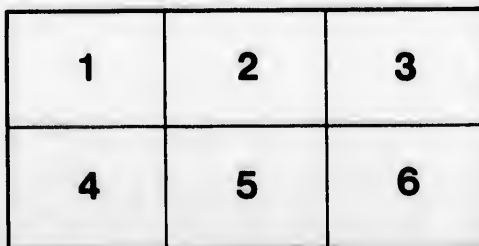
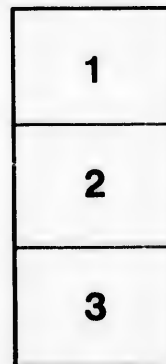
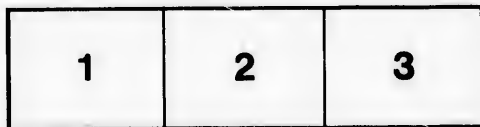
National Library of Canada

The images appearing here are the best quality possible considering the condition and legibility of the original copy and in keeping with the filming contract specifications.

Original copies in printed paper covers are filmed beginning with the front cover and ending on the last page with a printed or illustrated impression, or the back cover when appropriate. All other original copies are filmed beginning on the first page with a printed or illustrated impression, and ending on the last page with a printed or illustrated impression.

The last recorded frame on each microfiche shall contain the symbol  $\rightarrow$  (meaning "CONTINUED"), or the symbol  $\nabla$  (meaning "END"), whichever applies.

Maps, plates, charts, etc., may be filmed at different reduction ratios. Those too large to be entirely included in one exposure are filmed beginning in the upper left hand corner, left to right and top to bottom, as many frames as required. The following diagrams illustrate the method:



L'exemplaire filmé fut reproduit grâce à la générosité de:

Bibliothèque nationale du Canada

Les images suivantes ont été reproduites avec le plus grand soin, compte tenu de la condition et de la netteté de l'exemplaire filmé, et en conformité avec les conditions du contrat de filmage.

Les exemplaires originaux dont la couverture en papier est imprimée sont filmés en commençant par le premier plat et en terminant soit par la dernière page qui comporte une empreinte d'impression ou d'illustration, soit par le second plat, selon le cas. Tous les autres exemplaires originaux sont filmés en commençant par la première page qui comporte une empreinte d'impression ou d'illustration et en terminant par la dernière page qui comporte une telle empreinte.

Un des symboles suivants apparaîtra sur la dernière image de chaque microfiche, selon le cas: le symbole  $\rightarrow$  signifie "A SUIVRE", le symbole  $\nabla$  signifie "FIN".

Les cartes, planches, tableaux, etc., peuvent être filmés à des taux de réduction différents. Lorsque le document est trop grand pour être reproduit en un seul cliché, il est filmé à partir de l'angle supérieur gauche, de gauche à droite, et de haut en bas, en prenant le nombre d'images nécessaire. Les diagrammes suivants illustrent la méthode.

*E*  
*by*  
*Dep*

# INDEX

TO THE

“SCAIFE” CHART OF

The American Civil War

1860-1865

WITH

INTRODUCTORY NOTES.

---

1051 ELLICOTT SQUARE,  
BUFFALO, N.Y.

BRADENHALL BUILDINGS,  
LONDON, ENG.

77 VICTORIA STREET,  
TORONTO, CANADA.

---

THE COMPARATIVE SYNOPTICAL CHART CO., LIMITED. *Victoria B.C.*

*Entered according to Act of the Parliament of Canada, in the year 1897,  
by the Comparative Synoptical Chart Company, Limited, at the  
Department of Agriculture.*

## PARTIAL LIST OF WORKS CONSULTED.

---

- ALLAN. —Army of North Virginia, 1862.
- BEAUREGARD.—Battle of Manassas.
- CENTURY CO.—Battles and leaders of American Civil War.
- CUSTER. —Following the Guidon.
- COX. —March to the Sea.
- DODGE. —Bird's-eye view of our Civil War.
- DWIGHT, T. F.—Critical Sketches of Federal and Confederate Commanders.
- GRANT, U. S. —Memoirs.
- HYDE. —Following the Greek Cross.
- HARPER. —Book of Facts.
- HUMPHREY'S.—Virginia Campaign of 1864-5.
- MCCARTHY. —Soldier Life in Army of Northern Virginia.
- MAGUIRE. —Campaigns in Virginia 1861-2.
- MOSBY. —War Reminiscences.
- Official Records of Union and Confederate Armies.
- PHISTERER. —Statistical Record of the American Civil War.
- POLLARD. —The Lost Cause.
- ROPES, J. C. —Story of the Civil War (Part I).
- ROPES, J. C. —Army under Pope.
- SHELDON, P. —Personal Memoirs.

## INTRODUCTION.

---

**T**HERE can be no doubt in the mind of anyone, that the great American Civil War, is now, and will always be an event of the first magnitude to students of the history of the Anglo-Saxon people. The principles for which thousands of brave men fought and died, the far reaching consequences which waited upon the issue, and the vast expenditure of blood and treasure, all go to make this war one of the most prominent events in the history of the race. The story of the war has called into existence a whole literature of its own, and the books are legion which set out in outline or detail, the diverse views of actors or spectators in this great drama. As is inevitable in a phenomenon of this magnitude, its very nearness to ourselves tends to obscure our view. Thousands of men are yet alive who fought in the war, and the tendency must necessarily be to import into a discussion, which should now be purely scholastic, some remnant of political bias or bitterness, which can only tend to obscure our appreciation of the real lesson to be learned. This chart stands alone among the published records of the war, as presenting only the actual accepted facts, properly placed as to space and time, and as offering no single deduction drawn from these facts. The march of armies in advance or retreat, is shown as coldly and inevitably, as the course of the Mississippi or Nile is drawn upon a geographical map; divisions are massed or dispersed without a word of comment; and the supersession of a general is accomplished without one word of praise or blame. Surely this is the true method of chronicling this great drama. Free from the annoyance of partisans with their shouts of adulation or denunciation, we see at one glance the march of myriads of armed men over the battle field of a continent, slowly and majestically moving toward the ordained end.

The most exhaustive study of this part of American History tends more and more to impress the element of vastness upon the student's mind. The early stages of the war call up the picture of two giants struggling in the dark, and ignorant almost wholly of the resources and aims of each other. The invasion of southern territory by the Federal armies was really in the nature of an attack upon a fortified place. But on what a scale it all was! The fortress was the fourth of a continent,



the lines of circumvallation were reckoned in hundreds of miles, while innumerable unfordable rivers provided ramparts more secure than any which an engineer could construct. How hopeless therefore does it appear for an observer, however keen and vigilant, to take his stand on some mental eminence and in one glance see all the details of this great panorama. Personal experiment has shown the impossibility of such a standpoint being obtained from the perusal of any book, or number of books, however trustworthy or unbiassed. The thing is simply a mental impossibility. Fascinated with the heroic doings of the Army of the Potomac, the mind is incapable of simultaneously grasping the situation on the Mississippi, and when we turn to that part of the record, it reads as if it were another story altogether. This we know to be an incorrect view, as in relation to the whole war both movements gain their importance from that very contemporaneity which is always eluding our grasp.

No more striking instance could be adduced of the immense value of our system of presenting historical facts, than this one of the Civil War. Here the horizon is bounded only by the area and duration of the war. The vertical lines upon the chart define every State where fighting actually took place, making each of a size relative to its historical importance. Horizontal lines map out the area into the months and years of this memorable struggle. Upon this scientifically arranged battle ground, move, in ever-varying directions, the armies of Federalist and Confederate, from Bull Run to Appomattox Court House, from Maryland to Texas. Nothing is suppressed, nothing is added; only a plain impartial record of all the accepted facts is presented in such a way that a conspectus of the whole war is obtainable at a glance.

To show how much may be learned of the war by even the most casual attention to this chart, we will imagine ourselves seated at such a distance that it is impossible to read the detailed information. Only the great territorial and time divisions, and the principal lines of movement are visible to us, and with these aids only, what can we learn of our subject?

Fittingly placed in the centre of the chart in the month of April, 1861, we see the large circle named Fort Sumter, in S. Carolina, and indicating in time and place, the opening of the momentous struggle. Although a shot has been fired in anger, neither side realizes what must be the inevitable result of an appeal to arms. Some mustering of men takes place on both sides, but it is only in West Virginia, and in quite a small way, that anything is done until late in July. Then Washington

is terrified by the panic stricken entry of the Northern army flying from the disastrous field of Bull Run. How eloquently do those vertical lines, measuring off eight months of time, speak of the period of tedious inaction while McClellan was engaged in the reorganization of the army in front of Washington, and Johnston, equally unwilling to move, lay along the defensive line he had gained by his victory at Bull Run.

Disregarding the minor campaigns in this cursory survey of our chart, we find that the spring of '62 is ushered in by the initiation of several important movements. Early in February, Generals Grant and Buell are in Tennessee, engaged in operations which led up to the battle of Shiloh; Burnside and Goldsborough are in North Carolina, and McClellan is urging the adoption of a plan for a Peninsular Campaign which is to be an accomplished fact in April. The Federal victory at Shiloh is co-incident with the commencement of the siege of Yorktown, but how different had been the experiences of the armies of the East and West when September brought victory to each in Antietam and Iuka respectively.

The latter had met with no conspicuous check, but in Virginia the army of the Potomac had been dismembered after the disasters of the "Seven Days." The army of Virginia had been organized under Pope, from the remnants of those commands which Jackson had so expeditiously crushed in his famous campaign in the Shenandoah. It, in its turn, had met with disaster at Groveton and Bull Run, and the Southern advance was only changed into retreat by McClellan's victory at Antietam.

The closing month of 1862 saw two important engagements fought, Murfreesboro' in Tennessee, and Fredericksburg in Virginia, but with what different results! Rosecrans, after a desperate encounter, is enabled to go into winter quarters along the captured line of the Stone River, while Burnside withdraws the Army of the Potomac from the horrors of Fredericksburg, shattered and decimated.

July, 1863, was the turning point of the war. This month saw the Federal troops triumphant in Virginia and on the Mississippi, the fall of Vicksburg being contemporaneous with the great victory at Gettysburg. How clearly does the chart show the difference in the nature of the two campaigns. In the West the physical configuration of the country and natural forces were the chief obstacles to early success, while in Virginia the contest was with a brave enemy under the brilliant leadership of General Lee. Hence, it is here, that we observe a series of rapid retreats towards the Union base, associated with all

that is conjured up by the names of Chancellorsville, Beverley Ford and Winchester. The fall of Vicksburg however, immediately alters the contour of our chart. The West is no longer a storehouse for the Confederates, for the Union army is now in possession of the lines of communication, and nothing remains for the armies of Bragg and Longstreet, but to avoid being severed from their base by retiring into Georgia. Here then, the struggle continues at Chickamauga, and although Chattanooga is over the Tennessee border it is the last great fight in that state and the battle-ground is slowly but surely narrowing. Mine Run acts somewhat as a counterpoise to Chattanooga, but from this point there can be no doubt as to the final issue of the struggle. The appointment of General Grant to supreme command takes place on March 10th, '64, and in May begins that series of movements by which, after fighting the great battles of The Wilderness, Spottsylvania, North Anna River and Cold Harbor, the investment of Petersburg is accomplished. While Grant is occupied with the tedious duty of reducing the Confederate stronghold, his two lieutenants, Sherman and Sheridan, are conducting operations on either hand which are fatal to Southern hopes of a long continuance of the war. The heroic struggle of Johnson in Georgia is unsuccessful in stemming the Federal advance, and his successor, Hood, marches into Tennessee once more, only to be dispersed by Thomas at Nashville.

Sherman's "March to the Sea" ends in the utter quenching of Southern hopes at Averysboro' and Bentonville, while the Army of the Shenandoah, after the victory of Cedar Creek in October, '64, is free to operate at any moment with the forces before Petersburg. The heroic defence of this place comes to an end early in April, '65, and Lee marches out of its trenches only to find that escape is hopeless. On every side the Federal armies enclose him with an impenetrable cordon, and nothing remains but to lay down the sword at Appomattox Court House.

Such are the broadest features of the great Civil War, which are revealed at the most casual glance. Just as clearly, and accurately, are the most trifling details to be learned by a corresponding amount of application. We reproduce a portion of the Chart, and give minute directions for its study and use, from which it will be seen that any complexity is more apparent than real, and is only caused by the immense amount of data which has to be presented, so as to give what this Chart does, viz., an absolutely complete record of the War.

## ***DESCRIPTION OF CHART.***

---

### **Vertical Divisions.**

The chart is divided by vertical lines into twenty-one columns of varied size. The two outer ones on either side show the fluctuations in value of the paper dollar of the Union and Confederation respectively, and the proportion of men to one million which either side had in the field at any time. The States in which fighting actually took place are represented by the remaining seventeen columns, which are graded in accordance with the importance of the operations taking place within their borders.

### **Horizontal Divisions.**

The chart is further divided by horizontal lines which mark it off into the months from December 1860 to May 1865, thus enabling the student to locate any event in the war with the greatest accuracy.

### **Circles and Dots.**

Engagements are shown by a system of circles and dots the sizes of which are determined by the importance of the battle or skirmish. For instance, Gettysburg is shown by a circle of the first magnitude, Chancellorsville by one of the second, and so on, in a descending scale to the numbered blue or red dot denoting a minor engagement, naval or military respectively. These dots, when connected with the line showing army movements, represent smaller battles fought by the main army. Isolated dots show fighting between detached bodies of troops, or local levies.

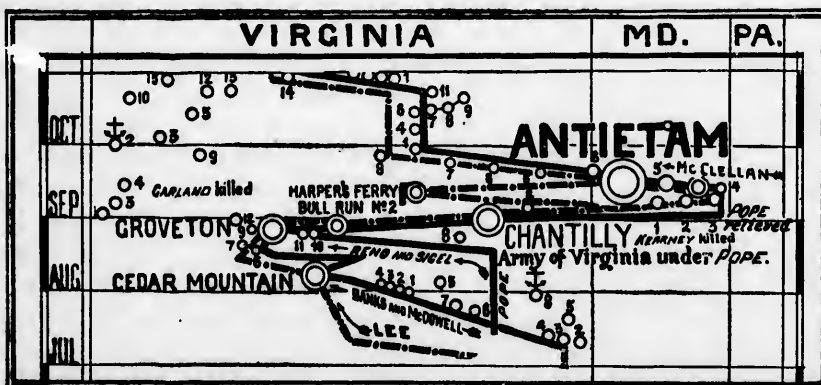
## Army Movements.

The movements of the Union armies are shown by means of a thick, solid, black line, accentuated with yellow. The Southern movements are similarly portrayed by a broken line enforced by green. The co-operation of the Union Navy with the land forces is shown by means of a cable and anchor. Advance is shown by the progression of the line away from its own base, and a retreat by a return toward it. The base line of the Federal army is presumed to be Washington, and the Confederate rallying points are Richmond in the east and Vicksburg in the West.

## The Map.

The map shown at the bottom of the chart, where also various explanatory keys and other information will be noticed, is a re-production of a war-time publication. The boundaries of States, and the railways are those in existence at that time. Railways shown by red line.

To illustrate the method of studying this chart, we reproduce a portion of the operations in Virginia during 1862 and describe it in detail.



The record commences with the first of July, 1862, in the State of Virginia. The Peninsular Campaign is just ended and an entry tells us

that we have to do with the newly-constituted army of Virginia under Pope, operating against Lee, fresh from his successes in the "Seven Days." The army is in three divisions under Sigel, Banks and McDowell, which are subsequently reinforced by troops under Reno from Burnside's command. The second and third divisions under Banks and McDowell commence a movement which has for its apparent object the occupation of Gordonsville, to prevent which, Lee despatches Jackson to that point. After several skirmishes, viz.: (3) Culpepper, (4) Fairfax, (6) North Anna River, (7) Orange Court House, in July and in August, (1) Orange Court House, (2) Sycamore Church, (3) White Oak Swamp, and (4) Malvern Hill, the two armies meet at Cedar Mountain on Aug. 9th, with no definite result. The Federals are able only to retire to their old camping ground, and the Confederates under Jackson, who is in immediate command, fall back likewise towards their base. This movement encourages Pope, who, knowing that reinforcements are arriving under Reno and Sigel, sets out in pursuit of Jackson on Aug. 12th, but once more retires towards the Rappahannock, under orders to hold that point at all costs. The movement brings on the fights at Kelley's Ford (No. 7) and skirmishes on the Rappahannock (No. 9) on Aug. 23rd and 25th. Stuart's daring raid on Pope's headquarters at Catlett's Station, is noted in the engagement (No. 8) on Aug. 22.

From this point the Confederate army assumes the offensive, and at Groveton and Gainsville the result is in their favor. Bull Run No. 2 is a continuation of these battles and is again disastrous to the Northern forces. Still retiring rapidly towards their lines near Centreville, the Federals take up a strong position near that place at Chantilly, in which battle Jackson suffers a check, but at heavy cost to the North. Pope retires within the defences of Washington and is relieved at his own request, McClellan taking command. The rapidity of Pope's retreat is most clearly shown by the line which indicates the movement of his army. This is nearly horizontal, and consequently only covers a period of four days between the engagement at Groveton and his arrival before Washington. This rule of course applies in all cases.

Lee moves rapidly forward into Maryland, being engaged with the enemy at Poolesville (1) Nolansville (2) Sugar Loaf Mountain (3), and finally occupying Frederick (4) on 12th Sept. Jackson had been despatched with a division to occupy Harper's Ferry, which he successfully accomplished on Sept. 15th. Lee had not received any encouragement from the people of Maryland, and McClellan with 90,000 men

was in movement against him. The day before the surrender of Harper's Ferry (Sept. 14), the Confederate rear was engaged at Turner's and Crampton's Gaps (No. 4) with the rapidly advancing army of McClellan, and Lee was forced to make a stand so as to enable Jackson to rejoin him in safety. He accordingly chose a position on the banks of the Antietam where a battle was fought on Sept. 16-17-18. Lee retired on the evening of the 18th. and fell back on Martinsburg. McClellan's pursuit ended with the last days of Sept. and not till Oct. 26th do we find the Army again in motion. At this date those movements commenced which led to the Campaign of Fredericksburg, but our diagram goes no further.

This, and much more, is the story chronicled in such a small fraction of the chart as we here reproduce, and the whole history of the war is as clearly shown in the complete chart. It will thus be seen that in this one work we have before us an arrangement of the facts of this great war such as has never before been presented, and by means of which the careful student may obtain a perfect knowledge of the struggle in general and in detail.

---

## ALPHABETICAL INDEX TO ENGAGEMENTS.

BATTLES.	STATE.	YEAR.	MONTH.	Page.	Column.
"Alabama" and "Kearsage" .....	Abroad .....	1864	June	19	—
"Albermarle" destroyed .....	North Carolina ..	1864	Oct.	27	—
Allatoona .....	Georgia .....	1864	Oct.	5	10 2
Antietam .....	Maryland .....	1862	Sep.	17	17 1
Appomatox C. H. ....	Virginia .....	1865	April	8-9	17 1
Atlanta .....	Georgia .....	1864	July	22	10 2
Atlanta (Siege) .....	" .....	1864	July 28 to	10	2
Atlanta (Burnt) .....	" .....	1864	Sep. 2	8	10 2
Baton Rouge .....	Louisiana .....	1862	Aug.	5	4 1
Belmont .....	Missouri .....	1861	Nov.	7	20 1
Bentonville .....	North Carolina ..	1865	Mar. 19-21	12	1
Bermuda Hundred .....	Virginia .....	1864	June	2	15 2
Beverly Ford .....	" .....	1863	June	9	14 2
Brice's Cross Roads .....	Mississippi .....	1864	July	10	6 2
Bull Run No. 1 .....	Virginia .....	1861	July	21	12 2
Bull Run No. 2 .....	" .....	1862	Aug.	30	13 2
Carricks Ford .....	W. Virginia .....	1861	July	14	18 1
Carthage .....	Missouri .....	1861	July	5	20 1
Cedar Creek .....	Virginia .....	1864	Oct.	19	16 2
Cedar Mountain .....	" .....	1862	Aug.	9	13 2
Champion Hills .....	Mississippi .....	1863	May	16	5 2
Chancellorsville .....	Virginia .....	1863	May	1-4	14 1
Chantilly .....	" .....	1862	Sep.	1	13 2
Chattanooga .....	Tennessee .....	1863	Nov.	23-5	8 2
Cheat Mountain .....	W. Virginia. ....	1861	Sep.	12-13	18 1
Chickamauga .....	Georgia .....	1863	Sep.	9-20	10 1
Chickasaw Bayou .....	Mississippi .....	1862	Dec.	28-9	5 2
Corinth .....	" .....	1862	April	30	5 1
Corinth .....	" .....	1862	Oct.	3-4	5 2
Cross Keys .....	Virginia .....	1862	June	8	13 1
Dallas .....	Georgia .....	1864	May	25	10 1
Decatur .....	Alabama .....	1864	Mar.	26-7	2 1
Deveaux Neck .....	S. Carolina .....	1864	Dec.	6-9	11 1
Ezra Chapel .....	Georgia .....	1864	July	23	10 3



BATTLES.	STATE.	YEAR.	MONTH.	Page.	Column.
Fisher's Hill .....	Virginia .....	1864	Sep. 22	16	2
Five Forks .....	" .....	1865	April 1	17	1
Fort Donelson .....	Tennessee .....	1862	Feb 14-16	7	1
Fort Fisher .....	N. Carolina .....	1865	Jan. 13-15	12	1
Fort Hatteras .....	" .....	1861	Aug. 28-9	11	2
Fort Henry .....	Tennessee .....	1862	Feb. 6	7	1
Fort Hindman .....	Arkansas .....	1863	Jan. 11	2	2
Fort Macon .....	N. Carolina .....	1862	April 25	11	2
Fort Pillow .....	Tennessee .....	1864	April 12	9	1
Fort Sumter .....	S. Carolina .....	1861	Apr. 12-13	11	1
Fort Wagner .....	" .....	1863	{ July 10 to Sep. 6	11	1
Franklin .....	Tennessee .....	1864	Nov. 30	9	2
Fredericksburg .....	Virginia .....	1862	Dec. 13	14	1
Gainesville .....	Virginia .....	1862	Aug. 29	13	2
Gettysburg .....	Pennsylvania .....	1863	July 1-3	17	2
Grand Coteau .....	Louisiana .....	1863	Nov. 3	4	2
Great Bethel .....	Virginia .....	1861	June 10	12	2
Croveton .....	" .....	1862	Aug. 28	13	2
Hanover Court House .....	Virginia .....	1862	May 27	13	1
Harper's Ferry .....	" .....	1862	Sep. 12-15	13	2
Honey Hill .....	S. Carolina .....	1864	Nov. 30	11	1
Island No. 10 .....	Tennessee .....	1862	Mar. 16	7	1
Iuka .....	Mississippi .....	1862	Sep. 19-20	5	1
Kenesaw Mountain .....	Georgia .....	1864	June 9-30	10	1
Knoxville (Siege) .....	Tennessee .....	1863	{ Nov. 17 { to Dec. 4	8	2
Malvern Hill .....	Virginia .....	1862	July 1	13	2
" Merrimac " and " Monitor " .....	" .....	1862	Mar. 9	13	1
Mill Springs .....	Kentucky .....	1862	Jan. 19-20	18	2
Mine Run .....	Virginia .....	1863	Nov. 24	15	1
Murfreesboro' .....	Tennessee .....	1862-3	{ Dec. 31 { to Jan. 2	7	2
Nashville .....	Tennessee .....	1864	Dec. 15-16	9	2
Newbern .....	N. Carolina .....	1862	Mar. 14	11	2
New Orleans (Captured) .....	Louisiana .....	1862	April 28	4	1
North Anna River .....	Virginia .....	1864	May 23	15	2
Olustee .....	Florida .....	1864	Feb. 20	7	1
Pea Ridge .....	Arkansas .....	1862	Mar. 5-8	2	2
Peach Orchard .....	Virginia .....	1862	June 29	13	1
Perryville .....	Kentucky .....	1862	Oct. 8	19	1
Petersburg (fall of) .....	Virginia .....	1865	April 2	17	1
Port Gibson .....	Mississippi .....	1863	May 1	5	2
Port Hudson .....	Louisiana .....	1863	{ May 27 { to July 9	4	1
Port Republic .....	Virginia .....	1862	June 9	13	1
Port Royal .....	S. Carolina .....	1861	Nov. 7	11	1
Prairie Grove .....	Arkansas .....	1862	Dec. 7	2	2

## ALPHABETICAL INDEX TO ENGAGEMENTS.

xiii

BATTLES.	STATE.	YEAR.	MONTH.	Page.	Column.
Rappahannock Station ...	Virginia .....	1863	Nov.	7 15	1
Resaca .....	Georgia .....	1864	May 15-16	10	1
Richmond .....	Kentucky .....	1862	Aug.	30 19	1
Rich Mountain .....	W. Virginia .....	1861	July	14 17	2
Roanoke Island .....	N. Carolina .....	1862	Feb.	8 11	2
Rocky Face Ridge .....	Georgia .....	1864	May	5-9 10	1
"Running Vicksburg Batteries." .....	Mississippi .....	1863	April	16 5	2
Sabine Cross Roads .....	Louisiana .....	1864	April	8 4	2
Savannah (Siege) .....	Georgia .....	1864	Dec. 10-21	10	2
Savage Station .....	Virginia .....	1862	June	29 13	1
Secessionville .....	S. Carolina .....	1862	June	16 11	1
Seven Pines .....	Virginia .....	1862	{ May 31 to June 1	13	1
Shiloh .....	Tennessee .....	1862	April	6-7 7	1
Spottsylvania .....	Virginia .....	1864	May	9-18 15	2
Tullahoma .....	Tennessee .....	1863	July	1 8	1
Vicksburg (Siege) .....	Mississippi .....	1863	{ May 18 to July 4	5	2
Wauhatchie .....	Tennessee .....	1863	Oct.	27 8	2
White Oak Swamp .....	Virginia .....	1862	June	30 13	2
Wilderness .....	" .....	1864	May	5-7 15	2
Williamsburg .....	" .....	1862	May	5 13	1
Wilson's Creek .....	Missouri .....	1861	Aug.	10 20	2
Winchester .....	Virginia .....	1862	Mar.	23 13	1
Winchester .....	" .....	1863	June	13-15 14	2
Winchester .....	" .....	1864	July	24 16	1
Winchester .....	" .....	1864	Sep.	19 16	2
Yates Ford .....	Kentucky .....	1862	Aug.	31 19	1
Yorktown (Siege) .....	Virginia .....	1862	{ April 5 to May 3	13	1

## ALPHABETICAL INDEX TO STATES.

STATE.	YEAR.	Gen. Index Page.	Column.	STATE.	YEAR.	Gen. Index Page.	Column.
Alabama.....(Ala.)	1862-3	1	2	Missouri. ....(Mo.)	1861-2	20	1
" .....	1864-5	2	1	" .....	1862	20	2
Arizona.....(Ariz.)	1862-3	22	1	" .....	1862-3	21	1
" .....	1864-5	22	2	" .....	1863-4	21	2
Arkansas.....(Ark.)	1861-2-3	2	2	Nebraska.....(Neb.)	1863	22	2
" .....	1863-4	3	1	Nevada.....(Nev.)	1864	22	2
" .....	1864	3	2	New Mexico..(N.M.)	1861-2-3	22	1
" .....	1864	4	1	" .....	1864	22	2
California....(Cal.)	1862-3	22	1	North Carolina(N.C.)	1861-2	11	2
" .....	1863-4	22	2	" .....	1862-3-4-5	12	1
Colorado.....(Col.)	1864	22	2	" .....	1865	12	2
Dakota.....(Dak.)	1862	22	1	Oregon.....(Ore.)	1864-5	22	2
" .....	1863-4	22	2	Pennsylvania...(Pa.)	1863-4	17	2
Florida.....(Fla.)	1861-2-3-4	1	1	South Carolina(S.C.)	1861-2-3-4	11	1
" .....	1864-5	1	2	" .....	1865	11	2
Georgia.....(Ga.)	1862-3-4	10	1	Tennessee...(Tenn.)	1861-2	7	1
" .....	1864	10	2	" .....	1862-3	7	2
" .....	1865	11	1	" .....	1863	8	1-2
Illinois.....(Ill.)	1864	22	2	" .....	1863-4	9	1
Indiana.....(Ind.)	1863	22	1	" .....	1864-5	9	2
Indian Territory(I.T.)	1862-3	22	1	Texas.....(Tex.)	1861-2-3-4-5	1	1
" .....	1863-4	22	2	Utah.....(Utah.)	1863	22	1
Kansas.....(Kan.)	1863	22	1	Virginia.....(Va.)	1861-2	12	2
" .....	1863-4	22	2	" .....	1862	13	1-2
Kentucky.....(Ky.)	1861-2	18	2	" .....	1862-3	14	1
" .....	1862-3	19	1	" .....	1863	14	2
" .....	1863-4-5	19	2	" .....	1863-4	15	1
Louisiana.....(La.)	1861-2-3	4	1	" .....	1864	15	2
" .....	1863-4	4	2	" .....	1864	16	1-2
" .....	1864-5	5	1	" .....	1865	17	1
Maryland.....(Md.)	1861-2-3	17	1	WashingtonTy.(W.T.)	1863	22	1
" .....	1863-4	17	2	West Virginia(W.Va.)	1861	17	2
Minnesota....(Minn.)	1862-3	22	1	" .....	1861-2-3-4	18	1
Mississippi...(Miss.)	1862	5	1	" .....	1864-5	18	2
" .....	1862-3	5	2				
" .....	1863-4	6	1				
" .....	1864-5	6	2				

# INDEX TO THE CIVIL WAR

—IN THE—

## UNITED STATES.

### TEXAS.

DATE.	INDEX No.	ENGAGEMENT.
1861		
Nov. 7	7	Galveston Harbor
1862		
Aug. 10	1.	Nueces River.
Dec. 14	1.	Fort Brown Road.
1863		
Jan. 1	1.	Galveston.
11	1.	"Hatteras & Alabama."
Feb. 10	1.	Wachita.
April 18	1.	Sabine Pass.
Nov. 2	1	Brazos de Santiago.
17	2.	Mustang Island.
27-29	3.	Fort Esperanza.
Dec. 29-30	1.	Metagorda Bay.
1864		
Nov. 24	1.	Bent's Old Fork.
1865		
May 13	..	Palmetto Branch.

### FLORIDA.

1861		
Sep. 14	1.	Near Pensacola.
Oct. 9	1.	Santa Rosa.
Nov. 23	1..	Pensacola.
1862		
Mar. 21	1.	Mosquito Inlet.
June 18	1.	Tallahatchie.
Oct. 15	1..	Apalachicola River.
1863		
Jan. 26	2.	Township.
Mar. 29	1.	Expedition to Jacksonville.
Oct. 17	1.	Destruction of two Blockade Runners in Tampa Bay.
Dec. 30	1.	St. Augustine.
1864		
Feb. 9	1	Near Point Washington. Barber's Place, South Fork. St. Mary's River.
9-10		
12	2.	Lake City.
14	3.	Gainesville.
20	..	<b>Olustee.</b>
April 2	1.	Pensacola.
May 1	1.	Jacksonville.
19	2.	"Welake" and "Saunders."

### FLORIDA—(Cont'd).

DATE.	INDEX No.	ENGAGEMENT.
1864.		
May 23	3..	Capture of steam tug "Columbine."
28	4..	Jacksonville.
July 26	1..	St. Mary's Trestle.
27	2..	Whitesides.
Aug. 17	1.	Gainesville.
Sep. 27	1..	Mariana.
Oct. 18	1..	Pierce's Point.
26	2..	Milton.
Dec. 17	1.	Mitchell's Creek.
1865		
Feb. 5	1..	Dunn's Lake.
16	2.	Cedar Keys.
20	3.	Fort Meyers.
Mar. 6	1..	Natural Bridge.
May 10	..	Sam Jones's surrender at Tallahassee.

### ALABAMA.

1862		
April 11	1..	Hunksville.
29	2..	Bridgeport.
May 9	1.	Elkton Station.
13	2.	Rogersville.
July 24	1..	Trinity.
25	2.	Courtland Bridge.
Aug. 27	1.	Fort McCook.
31	2..	Stephenson.
Nov. 28	1..	Little Bear Creek.
Dec. 12	1..	Little Bear Creek.
1863		
Feb. 22	1..	Tuscumbia.
April 17	1.	Bear Creek.
24	2.	Tuscumbia.
28	3..	Town Creek.
30	4	Day's Gap, Land Mountain, Black Warrior Creek.
May 1		
2	1..	Blount's Farm.
27	2.	Florence.
July 15	1..	Pulaski
Aug. 28	1..	Maysville.
Oct. 13	1..	Maysville.
21	2..	Cherokee Station.
26	3..	Cane Creek.
29	4..	Cherokee Station.

## ALABAMA—(Cont'd).

DATE.	INDEX No.	ENGAGEMENT.
1864		
Jan.	25	1.. Athens.
	26	2.. Florence.
Feb.	3	1.. Lebanon.
Mar.	7	1.. Decatur.
April	13	1.. Florence.
	17	2.. Decatur.
May	17	1.. Madison Station.
	26-27	.. <b>Decatur.</b>
	28-29	2.. Moulton.
June	10	1.. Cane Creek.
July	14	1.. Ten Islands.
	15	2.. Stone's Ferry.
	25	3.. Courtland
Aug.	5-23	...Fort Morgan.
	8	...Fort Gaines.
	18	1.. Decatur.
	23	...Fort Morgan.
Sep.	23	1.. Athens.
	25	2.. Sulphur Branch Trestle.
Oct.	1	1.. Huntsville.
	1-3	2.. Athens.
	6	3.. Florence.
	26-29	4.. Decatur.
	30	5 { Mussel Shoals.
		{ Near Brownsville.
		{ Ladija.
Nov.	9	1.. Shoal Creek.
	17	2.. Aberdeen and Butler Creek.
	26	3.. Madison Station.
Dec.	17-19	1.. Pine Barren Creek.
	27-28	2.. Decatur.
	29	3.. Pond's Springs.
1865		
Jan.	2	1 { Nauvoo.
	3	{ Thorn Hill.
	8	2.. Scotsboro'.
	14	3.. Red Hill.
Mar.	18	1.. Boyd's Station.
	25	2.. Pine Barren Creek.
Mar.	26	3 { Spanish Fort.
April	8	{ Siege of Mobile.
Mar.	26	3 { Spanish Fort.
April	9	{ Siege of Mobile.
Mar.	31	1 { Montavallo.
April	1	{ Trion.
	1	{ Centreville.
	1	{ Bogler's Creek.
	2	{ Celina.
	2	{ Scotsville.
	3	{ Northport.
	4	{ Tuscaloosa.
	6	{ Sipsey Swamp.
	10	{ Lowndesboro'.
12-13		{ Montgomery.
	22	{ Tallageda.
	23	{ Mumford's Station.
	9	2.. Fort Blakely.
	13	3.. Whistler's Station.

## ARKANSAS.

DATE.	INDEX No.	ENGAGEMENT.
1861		
Dec.	9	1.. Bushy Creek.
1862		
Mar.	5-6-7-8	.. <b>Pea Ridge</b> , includes Bentonville, Leetown, Elkhorn Tavern.
	18	1.. Salem, Spring River.
April	19	1.. Talbot's Ferry.
May	19	1.. Learcy Landing, Little Red River.
	27	2.. Big Indian Creek.
	28	3 { Cache River Bridge.
		{ Sycamore.
	28	4.. Sycamore.
June	12	1.. Waddell's Farm.
	17	2.. St. Charles, White River.
	18	3.. Smithville.
	25	4.. Little Red River.
	27	5.. Village Creek.
	27	6.. Waddell's Farm.
July	4	1.. Grand Haze.
	6	2 { Grand Prairie.
	7	{ Bayou Cache.
	9	3 { Aberdeen.
	10	{ Scatterville.
	14	4 { Batesville.
	15	{ Fayetteville.
	20	5.. Pitman's Ferry.
Aug.	3	1 { Jonesville.
		{ Languelle Ferry.
	11	2 { Taberville.
	11-14	{ Helena.
	13	3.. Clarendon.
Sept.	6	1.. La Grange.
	20	2.. Helena.
Oct.	11	1.. La Grange.
	18	2.. Helena.
	22	3 { Old Fort Wayne.
	28	{ Cross Hollow.
1862		
Nov.	7	1.. Rhea's Mills.
	7	2.. Mariana.
	25	3.. Camp Babcock.
	27	4.. Carthage.
	28	5.. Cane Hill, Boston Mountains, and Boonesboro'.
Dec.	5	1.. Helena.
	5	2.. Reed's Mountains.
	7	...PRAIRIE GROVE.
	28	3.. Dripping Springs.
1863		
Jan.	3	1.. La Grange.
	11	.. <b>Fort Hindman.</b>
	12	2.. Lick Creek.
	15	3.. Helena and Clarendon Roads.
	16	4.. Duval's Bluff and Des Ares.
Feb.	4	1.. Batesville.
	15	2.. Arkadelphia.
April	1	1.. Chalk Bluff.

## ARKANSAS—(Cont'd).

DATE.	INDEX	ENGAGEMENT.
1863.	NO.	
April	2	2 Little Rock Road.
	4	3 Carroll County.
	4	4 Madison.
	18	5 Fayetteville.
May	1	1 La Grange.
	11	2 Mount Vernon.
	25	3 Polk's Plantation.
July	4	1 Helena.
	10	2 Big Creek.
Aug.	14	1 West Point, White River.
	25-26	2 Brownsville.
	26	{ Perryville.
	27	{ Bayou Metoe.
	31	4 Austin.
Sep.	1	{ Bayou Metoe.
		{ Devil's Backbone.
	7	2 Ashley's Mills.
	9	3 Dardanelle.
	10	4 Little Rock.
	11	5 Waldron.
	14-16	6 Brownsville.
	27	7 Moffat's Station.
Oct.	6	1 Baxter's Springs.
	6	2 Fort Blair, Waldron.
	25	3 Pine Bluff.
	28	4 Clarksville.
Nov.	8	1 Clarksville.
	12	2 Roseville.
Dec.	8	1 Princeton.
	12	2 Duval's Bluff.
	23	3 Jacksonport.
	30	4 Waldron.
	1864	
Jan.	7	1 Martin's Creek.
	17	2 Lewisburg.
	19	3 Branchville.
	23	4 Rolling Prairie.
	24	5 Baker's Springs.
Feb.	1	1 Waldron.
	4	2 Hot Springs.
	9	3 Morgan's Mills, Spring River, White County.
	12	4 Caddo Gap and Scott's Farm.
	14	5 Ross Landing, Grand Lake.
	19	6 Vaughn's Farm.
	22	7 Lima Landing.
Mar.	6	1 Flint Creek.
	15	2 Clarendon.
	18	3 Monticello.
	26	4 Longview.
	28	5 Danville.
	28	6 Arkadelphia.
	30	7 Mount Elba.
April	1	1 Fitzhugh's Wood, Augusta.
	2	{ Antonie.
	2	{ Spoonville, Terrenoire Creek.
	3	{ Okalona.

## ARKANSAS—(Cont'd).

DATE.	INDEX	ENGAGEMENT.
1864.	NO.	
April	4-6	3 Elkin's Ford.
		{ Roseville.
	5	4 { Stone's Farm.
	8	5 Penbescott Bayou.
	10-13	6 Prairie d'Ann.
	13	{ Moscow.
	14	{ Dutch Mills.
	15	{ Liberty Post Office.
	16	{ Camden.
	16	8 King's River.
	18	9 Poison Springs.
	21	10 Cotton Plank, Cache River.
	23	11 Swan Lake.
	24	12 Jacksonport.
	25	{ Mark's Mills.
	26	{ Moro Creek.
	29	14 Princeton.
	30	15 Jenkins' Ferry, Saline River.
May	3	1 Richland.
	10	2 Dardanelle.
	19	3 Fayetteville.
	28	4 Little Rock.
June	3	1 Leeroy.
	6	2 Lake Chicot, Dutch Bayou, Columbia.
	16	3 West Point.
	21	4 Pine Bluff.
	22	5 White River.
	24	6 White River.
	25-29	7 Clarendon.
July	2	1 Pine Bluff.
	4	2 Searcy.
	12	3 Petit Jean.
	14	4 Farr's Mills.
	26	5 Wallace's Ferry.
	26	6 Des Arc.
	27	7 Mazard Prairie, Fort Smith
	28	8 West Point.
	29-31	9 Fort Smith.
Aug.	2	1 Osceolo.
	11	2 Van Buren.
	21	3 Duval's Bluff.
	24	4 Fort Smith.
	24	5 Jones' Hay Station and Ash- ley Station.
	26	6 Bull Bayou.
Sep.	6	1 Searcy.
	26	2 Vache Bras.
	27	3 Carter's Station, Watauga River.
	28	4 Clarksville.
Oct.	22	1 White River.
	23	2 Princeton.
	28	3 Fayetteville.
Nov.	3	1 Vera Cruz.
	14 28	2 Cow Creek.

## ARKANSAS—(Cont'd).

DATE.	INDEX No.	ENGAGEMENT.
1865		
Jan. 8	1..	Ivy Ford.
14	2..	Dardanelle.
Feb. 22	1..	Douglas' Landing, Pine Bluff.
Mar. 11	1..	Clear Lake.

LOUISIANA.

1861		
Oct. 12	1..	Bayle's Cross Rcads.
1862		
April 18-28	..	<b>FORT JACKSON &amp; CAPTURE OF NEW ORLEANS.</b>
June 22	1..	Raceland.
27	2..	William's Bridge.
Aug. 5	..	<b>Baton Rouge.</b>
18	1..	Capture of Rebel Steamer, "Fair Play."
Sep. 9	1..	Des Allemands.
14	2..	Ponchatoula.
Oct. 27	1..	Labadiesville.
Nov. 5	1..	Bayou Teche.
21	2..	Bayou Bontecar.
Dec. 28	1..	Clinton.
1863		
Jan. 14	1..	Bayou Teche.
27	2..	Indian Village.
Feb. 10	1..	Old River.
14	2..	Gordon's Landing.
Mar. 13	1..	Berwick City.
14	2..	Port Hudson.
18	3..	Brashear City.
24	4..	Ponchatoula.
28	5..	Pattersonville.
28	6..	Amite River.
30	7..	Richmond.
Apr. 12-14	1..	Irish Bend and Bisland.
15	2..	Dunbar's Plantation.
17	3..	Bayou Vermillion.
20	4..	Bute La Rose.
May 10	1..	Civiques Ferry.
13	2..	Ponchatoula.
15	3..	Camp Moore.
21	4..	Plain Stores.
25	5..	Franklin.
27	6..	Lake Providence.
27	..	<b>SIEGE OF PORT HUDSON.</b>
July 9	1..	Clinton.
June 4	1..	Milliken's Bend.
6-8	2..	Lake Providence.
10	3..	Port Hudson.
11	4..	2nd Assault on Fortifications at Port Hudson.
14	4..	Richmond.
15	5..	Richmond.

## LOUISIANA—(Cont'd).

DATE.	INDEX 1863. No.	ENGAGEMENT.
June 18		Plaquemine.
20		Jackson Cross Roads.
20-21	6	La Fourche Crossing.
23		Brashear City.
24		Chakapoola Station.
28		Donaldsonville.
29		Lake Providence.
30	7	Bayou Tensas.
July 2	1..	Springfield Landing.
9	..	Port Hudson.
13	2..	Donaldsonville.
Aug. 3	1..	Jackson.
6	2..	Ram "Arkansas" destroyed.
Sep. 7	1..	Atchafalaya River.
8	2..	Baton Rouge.
8	3..	Sabine Pass.
12	4..	Stirling's Plantation.
14	5..	Fidalia.
29	6..	Stirling's Farm.
Oct. 4	1..	Newton.
10	2..	Vermillion Bayou.
21	3..	Opelousas.
Nov. 3	..	<b>Grand Couteau.</b>
18	1..	Carriion Crow Bayou.
21	2..	Waterproof.
26	3..	Bonfouca.
1864		
Jan. 7	1..	Madisonville.
Feb. 7	1..	Fidalia.
8	2..	Donaldsonville.
14-15	3..	Waterproof.
19	4..	Grosse Tete Bayou.
Mar. 2	1..	Harrisonburg.
14	2..	Fort de Russy.
21	3..	Henderson's Hills.
30		Grosse Tete Bayou.
30		Natchitoches.
31		Crump's Hill.
April 2	1	Pine Woods.
4		Campiti.
7		Wilson's Farm.
7	2..	Plain Store.
8	..	<b>Sabine Cross Roads.</b>
9		Pleasant Hills.
12		Pleasant Hills.
19		Natchitoches.
20		Waterproof.
22	3	Near Tunica Bend.
23		Moneti's Bluff.
23-24		Cloutersville.
26		Red River.
26		Alexandria.
May 1	1..	Clinton.
1-4	2	Hudnot's Plantation.
1-8	3	Ashwood Landing.
2	4..	Near Alexandria.
2	4..	Governor Moore's Plantation.

LOUISIANA—(Cont'd).

DATE.	INDEX	ENGAGEMENT.
1864.	No.	
May	3	5 { Baton Rouge. Transport "City Belle" near Snaggy Point.
		5 6. Dun's Bayou, Red River.
		7 7. Bayou La Mourie.
	14-16	8. Manshura.
		15 9. Mount Pleasant Landing.
		18 10. Bayou De Glaize.
		22 11. Old River.
	June	12 1. McFee's Cross Roads.
		25 2. Point Pleasant.
	July	22 1. Vidalia.
		28 2. Atchafalaya River.
Aug.	5 1. Donaldsonville.	
	6 2. Plaquemine.	
	15 3. Coney Creek.	
Oct.	5 1. Jackson.	
	5 2. Fort Adams.	
	15 3. Bayou Biddell.	
Nov.	1 1. Black River.	
	15 2. Clinton and Liberty Creek.	
	19 3. Bayou la Fouché.	
	21 4. Liberty and Jackson.	
1865		
Mar.	2 1. Clinton.	
	6 2. Olive Branch.	

MISSISSIPPI.

DATE.	INDEX	ENGAGEMENT.
1862	No.	
Mar.	8	1. Mississippi City.
April	4	1. Pass Christian.
	8	2. Reconnaissance on Corinth Road.
	26	3. Reconnaissance to Nick Creek.
	30	.. SIEGE OF CORINTH.
May	3	1. Farmington.
	8	2 { Glendale. Farmington.
	9	3 Russel's House.
	17	4. Phillip's Creek.
	21	5. Booneville
	30	6. Tuscumbia Creek.
	30	.. Evacuation of Corinth.
June	4	1. Blackland.
	9	2. Baldwin.
	26-29	3. Vicksburg.
July	1	1. Booneville.
	24	2. Coldwater.
Aug.	2	1. Coahoma County.
	2	2. Austin.
	19	3. Rienzi.
	26	4. Rienzi and Kossuth.
Sep.	10	1. Coldwater.
	10	2. Natchez Surrender.
19-20		.. IUKA.

MISSISSIPPI—(Cont'd).

DATE.	INDEX	ENGAGEMENT.
1862.	No.	
Sept.	20	3. Prentiss and Bolivar.
	23	4. Wolfe Creek Bridge.
Oct.	2	1. Baldwin.
	3-4	.. CORINTH.
	5	2. Big Hatchie River.
Nov.	8	1. Hudsonville.
	12	2. Lamar and Holly Springs.
	26	3. Sunnerville.
	28	4. Coldwater River.
	29-30	5. Waterford and Lumpkin's Mills.
Dec.	3	1. Oakland.
	3	2. Oxford.
	4	3. Water Valley.
	5	4. Coffeerville.
	20	5. Holly Springs.
	21	6. Davis Mills.
	24	7. Middleburg.
	28-29	8. Chickasaw Bayou.
1863		
Feb.	19	1. Coldwater.
	20	2. Yazoo Pass.
	21	3. Prairie Station.
	23	4. Deer Creek.
	24	5. Vicksburg.
Mar.	13	1. Fort Pemberton.
April	5	1. Expedition up Steel's Bayou.
Mar. 16-22		2. Deer Creek.
April	9	1. East Pascagoula.
	16	2. Running the Vicksburg Bat.
	18	3. Hernando.
	19	{ New Albany.
	21-22	{ Palo Alto.
	28	{ Union Church.
May	1	{ Tickfaw River.
April	19	5. Coldwater.
	29	6. Grand Gulf.
	30	7. Snider's Bluff.
	5-10	8. Black Bayou Expedition.
May	1	.. Port Gibson.
	3	1. Forty Hills.
	6	2. Tupelo.
	12	3. Fourteen Mile Creek.
	12	4. Raymond.
	13	{ Hall's Ferry.
	14	{ Jackson.
	16	.. CHAMPION HILLS.
	17	6. Big Black River.
	18	{ .. SIEGE OF VICKSBURG.
July	4	{ .. First unsuccessful assault on Vicksburg.
May	19	{ 8 { Beaver Dam Lake. Senatobia.
	23	{ 9. Mechanicsville.
	25	{ 1. Mechanicsville and Sartoria.
June	4	



## MISSISSIPPI—(Cont'd).

DATE.	INDEX	ENGAGEMENT.
1863.	No.	
June	20	2.. Rocky Crossing.
	20	3.. Hernando.
	22	4.. Hill's Plantation.
	22	5.. Cypress Bend.
	25	6 { Fort Hill, Vicksburg.
	28	
July	1-2	1.. Black River.
	4-5	2.. Boulton and Birdsong Ferry.
	6	3.. Jones Ford.
	7-9	4.. Iuka.
	7	5.. Convalescent Corral.
	9-16	6.. Jackson.
	13	7.. Yazoo City.
	16	8.. Jackson.
	18	9.. Brandon.
	18	10.. Canton.
	28	11.. Coldwater.
	28	12.. St. Catharine's Creek.
Aug.	13	1.. Grenada.
	21	2.. Coldwater.
	27	3.. Vicksburg.
Sep.	15	1.. Hendricks.
Oct.	5	1.. New Albany.
	7	2.. Como.
	8	3.. Salem.
	10	4.. Ingham's Plantation.
	12	Ingham's Mills
	13	5 { Wyatt, Tallahatchee.
	13	
	15	7.. Canton.
	17	8.. Clinton.
	18	9.. Brownsville.
	20	10.. Barton Station.
	26	11.. Vincent's Cross Road.
Nov.	9	1.. Bayou Sara.
	11	2.. Natchez.
Dec.	1	1.. Ripley.
	4	2.. Moscow Station.
	7	3.. Natchez.
	17	4.. Rodney.
	26	5.. Port Gibson.
1864		
Jan.	16-18	1.. Grand Gulf.
	20	2.. Island No. 76.
Feb.	1	} .. Expedition up the Yazoo.
Mar.	8	
Feb.	3	1.. Liverpool Heights.
Feb.	3	} .. Expedition from Vicksburg
Mar.	5	
Feb.	4	2 { Champion Hills, Baker's C'k.
	5	
		Clinton and Jackson.
	5	3.. Wyatts.
	8	4.. Morton.
	12	5 { Chunky Station.
		Decatur.
	13	6.. Vicksburg.
	13	7.. Tunnel Hill.

## MISSISSIPPI—(Cont'd).

DATE.	INDEX	ENGAGEMENT.
1864.	No.	
Feb.	14	8.. Meridian.
	16	9.. Lauderdale Springs.
	17	10.. Marion.
	20	11.. Prairie Station.
	21	12 { West Point.
	22	
	27-28	13.. Near Canton.
	28	14.. Near Yazoo City.
Mar.	4	1.. Rodney.
	5	2.. Yazoo City.
	5	3.. Coleman's
	31	4.. Roach's
April	21	1.. Red Bone.
May	7	1.. Red Bone.
	12	2.. Vaughan.
	21	3.. Mount Pleasant.
	24	4.. Holly Springs.
June	7	Ripley.
	10	1 { <b>Brice's Cross Roads.</b>
	10	
	11	3.. Ripley.
	23	4.. Collinsville.
July	2	1.. Saulsbury.
	3-9	Expedition from Vicksburg to Jackson.
	4	2.. Vicksburg.
	4	3.. Clinton.
	4-5	4.. Coleman's Plantation.
	5-18	.. Smith's Expedition from La Grange to Tupelo.
	5-6	5.. Jackson.
	7	6.. Clinton.
	7	7.. Ripley.
	11	8.. Pontotoc.
	13-15	9.. Tupelo, includes Harrisburg July 13, Old Town Creek, July 15.
	16-17	10.. Grand Gulf, Port Gibson.
	24	11.. Steamer "Clara Belle."
Aug.	7-9	1.. Tallahatchie River.
	10	2.. U. S. Steamer "Empress."
	12	3.. Abbeville and Oxford.
	14	4.. Hurricane Creek.
	21-22	5.. College Hill.
	23	6.. Abbeville.
	27-28	7.. Holly Springs.
Oct.	6	1.. Woodville.
	10	2.. East Point.
	23	3.. Hurricane Creek.
Nov.	22	1.. Rolling Fork.
Dec.	1	1.. 12 Miles from Yazoo City.
	2	2.. No name given.
	18	3.. Franklin Creek.
	25	4.. Verona
	28	5.. Egypt Station.
1865		
Jan.	2	1.. Franklin.

TENNESSEE.

DATE.	INDEX NO.	ENGAGEMENT.
1861		
Nov.	10	1. Taylor's Ford.
Dec.	1	1..Morristown.
1862		
Feb.	2	1 ..Morgan County.
	6	.. <b>Fort Henry.</b>
	14	} .. <b>Fort Donelson.</b>
	15	
	16	
Mar.	2	1..Pittsburg Landing.
	8	2..Near Nashville
	10	3..Jacksboro, Big Creek Gap.
	11	4..Paris.
	14	5...Pound Gap.
	16	.. <b>Commencement of Siege of Island No.10.</b>
	16	6..Black Jack Forest.
	30	7..Union City.
April	4	1..Crump's Landing.
	6-7	..SHILOH.
	8	..Island No. 10.
	14	2...Fort Pillow.
	16	3..Savannah.
	28	4..Cumberland Mountain.
	28	5..Monterey.
May	5	1..Lebanon.
	10	2..Fort Pillow.
	13	3..Monterey
June	4	1..Fort Pillow.
	4	2...Jasper, Sweden's Cove.
	6	3..Memphis.
	21	4..Battle Creek.
	25	5..Germantown.
July	1	1. Morning Sun.
	1	2..Russelville.
	13	3..Murfreesboro'.
	15	4..Near Decatur;
	21	5..Nashville.
	25	6..Brownsville, Hatchie River.
	29	7..Brownsville.
Aug.	4	1..Sparta.
	6	2..Tazewell.
	7	3..Trenton.
	11	4..Salisbury.
	11	5 { Williamsport.
		{ Kinderhook.
	12	6..Gallatin.
	13	7..Gallatin.
	15	8..Merryweather's Ferry.
	19	9..Clarksville.
	20	10..Edgefield Junction.
	22	11..Courtland.
	25	12..Fort Donelson.
	26	13..Cumberland Iron Works.
	28	} Readyville, Round Hill.
	29	
	29	14 { Manchester.
	30	15 ..Bolivar.

TENNESSEE—(Cont'd)

DATE.	INDEX NO.	ENGAGEMENT.
1862.		
Aug.	30	16..McMinville.
	31	17..Medon.
Sep.	1	1..Briton's Lane.
	4	2..Big Creek Gap.
	7	3..Clarksville.
	9	4..Columbia.
	17	5..Durhamville.
Oct.	1	1..Gallatin.
	7	2..La Vergne.
	20	} Near Nashville.
	21	
	21	
	23	4..Waverly.
	23	5..Shelby Depot.
Nov.	5	1..Nashville.
	11	2..Huntsville.
	11	3..Lebanon.
	18	4..Rural Hills.
	27	5..Scrougeville and La Vergne.
Dec.	6	1..Lebanon.
	7	2..Hartsville.
	9	3 { Dobbin's Ferry.
		{ Brentville.
	12	4..Franklin.
	18	5..Lexington.
	18	6..Jackson.
	20	7..Trenton.
	26	8..Nolansville.
	28	} Elk Fork.
	29	
	30	9 { Stewart Creek.
		{ Jefferson.
	30	10..Wautauga Bridge and Carter's Station.
	30	11..Parker's Cross Roads.
Jan. 2, 1863	31	} MURFREESBORO'.
	1863	
Jan.	1	1 { Stewart's Creek.
		{ La Vergne.
	5	2..Middletown.
	8	3..Ripley.
	23	4..Fish Springs.
	24	5..Woodburg.
	25	6..Construction Train near Murfreesboro'.
	30	7..Dyersburg.
	31	8..Rover.
	31	9..Middletown.
Feb.	1	1..Franklin.
	3	2..Fort Donaldson.
	8	3..Lebanon.
	10	4..Boneyard.
	13	5..Bolivar.
	15	6..Cainsville.
	15	7..Nolansville.
	18	8..Milton.
Mar.	1	1..Bradysville.

## TENNESSEE—(Cont'd).

DATE. 1863.	INDEX NO.	ENGAGEMENT.
March	2	{ Edgeville.
	2	{ Petersburg, Chapel Hill and Harpeth River.
2-4	3	Thompson's Station.
4-5	4	Bolivar.
9	5	Franklin.
10	6	Covington.
10	7	Rutherford's Creek.
20	8	Naught's Hill.
	9	{ Salem Pike.
	9	{ Cottage Grove.
25	10	Brentwood.
25	11	Franklin and Little Harpeth.
29	12	Somerville.
April	2-3	Woodbury and Snow Hill.
	10	Waverly.
	10	Franklin and Harpeth River.
	10	Antioch Station,
	17	{ Grierson's Expedition from La Grange, Tennessee, to Baton Rouge, La.
May	2	5
April	20	McMinville.
	24	Little Rock Landing.
	27	Franklin.
May	12	Linden.
	21	Middleton.
June	4	Franklin.
	6	Murfreesboro', Shelbyville.
	9	Triune.
	23-30	ROSECRAN'S CAMPAIGN FROM MURFREESBORO' TO TULLAHOMA.
	24	{ Middleton, Shelbyville Pike.
	24	{ Hoover's Gap.
	25	{ Liberty Gap, or Beach Grove.
	27	{ Guy's Gap and Shelbyville.
July	1	Tullahoma.
	2	Elk River.
	4	University Place.
	6	Pound Gap Expedition.
	10	Union City.
	13	Jackson.
	14	Elk River.
Aug.	9	Sparta.
	21	Chattanooga.
Sep.	5	Limestone Station, near Telford.
	9	{ Cumberland Gap.
	10	{ Brimstone Creek.
	10	Knoxville occupied.
	13	Paris.
	21	Bristol.
	22	Johnson Depot.
	22	Carter's Station.
	22	Blountsville.
	24	Zollicoffer.
	26	Calhoun.

## TENNESSEE—(Cont'd).

DATE. 1863.	INDEX NO.	ENGAGEMENT.
Sept.	28	10..McMinville.
	30	11..Swallow's Bluff.
Oct.	1	1..Anderson's Gap.
	2	2..Anderson's Cross Roads.
	3	3..Thompson's Cove.
	3	4..McMinville.
	4	5..Murfreesboro' Road.
	5	6..Stockade at Stone River.
	5	7..Near Blue Springs.
	5	8..Wartrace.
	7	9..Shelbyville Pike.
	9	10..Sugar Creek near Pulaski.
	10	{ Blue Springs.
	11	{ Rheatown.
	11	12..Henderson's Mill.
	11	13..Collinsville.
	13	14..Blountsville.
	20-22	15..Philadelphia.
	22	16..New Madrid Bend.
	23	{ Supply train, Tullahoma.
	28	{ Leiper's Ferry.
	24	18..Sweetwater.
	25	19..Colliersville.
	26	20..Philadelphia.
	27	21..Brown's Ferry.
	27	22..Wauhatchie.
Nov.	1	1..Fayetteville.
	3	2..Centreville and Pine Factory.
	3	3..Colliersville.
	4	4..Lawrenceburg.
	4	5..Moscow.
	6	6..Kir.caels.
	6	7..Rogersville.
	13	8..Palmyra.
	14	{ Hough's Ferry.
	14	{ Rockford.
	14	{ Marysville.
	15	{ London Creek.
	15	{ Leonirs.
	15	11..Holston River.
	16	12..Campbell Station.
	17	19 Siege of Knoxville.
Dec.	4	19
Nov.	19	13..Union City.
	23-25	..CHATTANOOGA.
	26	{ Sparta.
	29	{ Fort Saunders.
	26	15..Beersheeba Springs.
	26	16..Kingston.
	27	17..Cleveland.
	28	18..Louisville.
Dec.	3	1..Salisbury.
	6	2..Church Mountain.
	7	3..Celina.
	10	4..Bean's Station.
	10	5..Morristown.
	10	6..Moresburg.

TENNESSEE—(Cont'd).

DATE.	INDEX No.	ENGAGEMENT.
1863		
Dec.	14	7. Bean's Station.
	16	8. Blain's Cross Roads.
	22	9. Cleveland.
	24-25	10. Bolivar and Summerville.
	25	11. Lafayette.
	27-28	12. Colliersville.
	28	13. { Charleston. Talbot Station and Mossy Creek.
	29	
1864		
Jan.	10	1. Strawberry Plains.
	13	2. Mossy Creek.
	14	3. Middleton.
	14	4. Terrysville, Cosley Creek.
	16-17	5. Dandridge.
	20	6. Tracy City.
	22	7. Armstrong Ferry.
	24	8. Tazewell.
	27	9. Fair Gardens.
	27	10. Scott's Mills Road.
	29	11. Cumberland Gap.
Feb.	6	1. Bolivar.
	10-25	.. Smith's Raid from German- town.
	20	2. Halston River.
	22	3. Powell's River Bridge.
	22	4. Cumberland Gap
	22	5. Talberry Gap.
	22	6. Johnston's Mills, White Co.
	23	7. Calf Killer Creek.
Mar.	5	1. Panther Springs.
	14	2. Cheek's Cross Roads.
	16	3. Fort Pillow.
	17	4. Manchester.
	18	5. Calf Killer River.
	20	6. Beersheba Springs.
	29	7. Bolivar.
April	2	1. Cleveland.
	8	2. Wolf River.
	12	.. <b>Fort Pillow.</b>
	13	3. Cleveland.
	25-26	4. Wautauga Bridge.
May	2	1. Memphis.
	3	2. Bolivar.
	13	3. Pulaski.
	13	4. Tilton.
	24	5. Nashville.
June	9	1. Lafayette.
	15	2. Moscow.
	24	3. Lafayette.
July	2-5	1. Nickajack Creek.
Aug.	17	1. Cleveland.
	19	2. Pine Bluff, Tennessee River.
	19	3. Block House, No. 4 N. & C. R. R.

TENNESSEE—(Cont'd).

DATE.	INDEX No.	ENGAGEMENT.
1864		
Aug.	21	4. Memphis.
	22	5. Rogersville.
	31	6. Block House, No. 5 N. & C. R. R.
Sep.	1-8	.. Rosseau's pursuit of Wheeler in Tennessee.
	1	1. La Vergne.
	2	2. Franklin.
	3	3. Murfreesboro'.
	4	4. Greenville.
	5	5. Campbellville.
	7	6. Readyville.
	24	7. Bull's Gap.
	25	8. Johnstonville.
	26	9. Richland.
	27	10. Pulaski.
	29	11. Centreville.
Oct.	4	1. Near Memphis.
	10	2. South Tunnel.
	11	3. Fort Donaldson.
	12	4. Greenville.
	20	5. Little River.
	28	6. Fort Haiman.
	28	7. Morristown.
Nov.	1-4	1. Union Station.
	4-5	2. Johnstonville.
	5-6	3. Big Pigeon River.
	13	4. Bull's Gap, Morristown.
	22	5. Lawrenceburg.
	24	Campbellville and Linville. Columbia, Duck Run. Spring Hill on M't. Carnel. <b>Franklin.</b>
	24-28	
	29	
	30	
Dec.	2-3	1. Block House No. 2, Mill Creek, Chattanooga.
	4	2. Block House No. 7, Overall's Creek.
	5-8	3. Murfreesboro'.
	13	4. Kingsport.
	14	5. Bristol.
	14	6. Memphis.
	15	7. Murfreesboro'.
	15-16	.. <b>Nashville</b> , Overton Hills.
	17	8. Ho'low Tree Gap.
	17	9. Franklin.
	19	10. Rutherford Creek.
	23	11. Linville.
	23	12. Buford's Station.
	24	13. Murfreesboro'.
	25	14. Pulaski, Lamb's Ferry, An- thony's Hill and Sugar Creek.
1865		
Feb.	26	1. Chattanooga.

GEORGIA.

DATE.	INDEX NO.	ENGAGEMENT.
1862		
April	10	1..Fort Pulaski.
	16	2..Whitemarsh.
1863		
Feb.	1	1..Fort McAllister.
Mar.	3	1..Fort McAllister.
Sep.	10	1..Graysville.
	11	2..Ringold, Dug Alpine, Stephen's Gap.
	13	3..Let's Tan Yard.
	19-20	..CHICKAMAUGA.
Nov.	27	1..Ringold.
1864		
Jan.	21	1..Near Dalton.
	28	2..Tunnel Hill.
Feb.	25-27	1..Buzzard Roost and Tunnel Hill.
April	23	1..Nickajack Trace.
May	3	1..Red Clay.
	5-9	2..Rocky Face Ridge.
	7	{ Tunnel Hill.
	7	{ Mill Creek and Duck Gaps.
	8	{ Buzzard Roost Gap.
	8	{ Snake Creek Gap.
	9	{ Dalton.
	9	{ Varnell's Station.
	13-16	{ ..Resaca, including Ley's Ferry, Tanner's Bridge, Rome Cross Roads.
	15	{ ..Resaca, including Ley's Ferry, Tanner's Bridge, Rome Cross Roads.
	16	{ ..Resaca, including Ley's Ferry, Tanner's Bridge, Rome Cross Roads.
	17-18	{ Adairsville.
	18	{ Rome.
	25	{ Dallas.
June	4	{ Kingston.
May	18	{ New Hope Church.
	-24	{ Burnt Hickory.
		{ Pumpkin Vine.
		{ Altoona Hill.
	19-22-25	{ Carsville Station.
	26	{ Burned Church.
June	3	{ Ackworth.
	9-30	{ Kenesaw Mountain, includes Pine Mountain, Golgotha, Noses Creek, Pine Knob, Lattamore's Mills, Noonday Creek, Powder Spring, Cupp's House, Lafayette.
July	2-5	1..Nickajack Creek.
	18	2 { Chewa Station, Montgomery & West Point R. R. Auburn.
	6-10	..Chattahoochee.
	20	3..Peach Tree Creek.

GEORGIA—(Cont'd).

DATE.	INDEX NO.	ENGAGEMENT.
1862		
July	22	4..Atlanta.
	26-31	{ McCook's Raid to Lovejoy Station.
	28	{ 5 Campbelltown.
	29	{ Lovejoy Station.
	30	{ Newnan.
	26-31	{ Stoneman's Raid to Macon.
	28	{ Flatshoal.
	30	{ Macon.
	31	{ Hillsboro'.
	28	..Ezra Chapel, Atlanta.
July	23	..SIEGE OF ATLANTA.
Sep.	2	..SIEGE OF ATLANTA.
Aug.	5-6	1..Utoy Creek.
	5	2..Decatur.
	14-16	3..Dalton.
	18	4..Fairburn.
	18-25	{ Kirkpatrick's Raid on Atlanta.
	19	{ Red Oak.
	19-20	{ 5 Jonesboro'.
	20	{ Lovejoy Station.
	31	{ 6 Jonesboro'.
Sep.	1	..Occupation of Atlanta.
	2	1..Lovejoy Station.
	2-6	2..Big Shanty.
	2	2..Sweetwater.
Oct.	1-3	1..Allatoona.
	5	..Allatoona.
	11	2..Narrows.
	12	3..Resaca.
	13	4..Tilton.
	13	5..Dalton.
	13	6..Buzzard's Roost Block H'se.
	15	7..Snake Creek Gap.
	16	8..Ship's Gap.
Nov.	8	..Atlanta Burnt.
	16	1..Lovejoy Station.
	16	2..Bear Creek Station.
	20	3..Macon.
	22	4..Clinton.
	22	5..Griswoldville.
	24-25	6..Ball's Ferry.
	26	{ Sandersville.
	26	{ 7 Sylvan Grove.
	27-29	{ Wanesboro'.
Dec.	1	1..Millen Grove.
	2	{ Rocky Creek Church.
	3	{ Thomas Station.
	4	{ 2 Wanesboro' and Briar Creek.
	4	{ Statesboro'.
	7	{ Ebenezer Creek.
	7-9	{ 3 Ogeechee River.
	9	4..Cuiler's Plantation.
	10-21	..Siege of Savannah.
	13	5 Fort McAllister.

GEORGIA—(Cont'd).

DATE.	INDEX No.	ENGAGEMENT.
1865		
April 16	1..	Fort Taylor.
16	2..	Columbus.
20	3..	Tobosofkee.
	4..	Macon.
May 10		...Irwinsville, "Capture of Jefferson Davis."

SOUTH CAROLINA.

DATE.	INDEX No.	ENGAGEMENT.
1861		
April 12-13		...FORT SUMTER.
Nov. 7		.. <b>Port Royal.</b>
1862		
Jan. 1	1..	Port Royal.
April 18	1..	Edisto Island.
May 29	1..	Pocotaligo
June 1	1..	Seabrook Point.
	3	Legare's Point.
10	3	James Island.
13		James Island.
16		.. <b>Secessionville.</b>
Aug. 21	1	Pinkney Island.
Oct. 22	1..	Pocotaligo.
1863		
Jan. 31	1..	Off Charleston Bar.
April 7	1	Bombardment of Fort Sumter.
	8	2.. Broad River.
June 4	1..	Bluffton.
July 10	}	<b>Siege of Fort Wagner,</b> <b>Morris Island.</b>
Sep. 6		
July 10-11	1..	Assault on Fort Wagner.
	16	2.. Secessionville, James Island.
	18	3. Second assault on Fort Wagner.
Aug. 26	1..	Vinegar Hill, Morris Island.
Sep. 7		..Evacuation Battery Gregg and Fort Wagner.
	8	1.. Night Attack on Fort Sumter.
Nov. 24	1..	Barnwell's Island.
Dec. 25	1..	Legaresville, Stone Inlet.
1864		
Feb. 17	1..	Loss of the "Housatonic," Charleston Harbor.
	22	2 Willmarsh Island.
April 18	1..	Boykin's Mills.
May 16	1..	Ashpoo River.
July 2	1..	Fort Johnston, James Island.
	5-7	2.. John's Island.
Nov. 30	1..	<b>Honey Hill.</b>
Dec. 4	1..	Coosaw River.
	6-9	.. <b>Deveaux Neck.</b>

SOUTH CAROLINA—(Cont'd).

DATE.	INDEX No.	ENGAGEMENT.	
1865			
Jan. 14-16	1..	Pocotaligo.	
25	2..	Combatree River.	
Feb. 3-9	1	River's Bridge, Salkahatchie.	
	8	2.. Willston.	
	9	3.. Binmaker's Bridge.	
	10	4. James Island.	
	11	5 { Blackville, Aikan.	
	11		Orangeburg.
	12		Gunter's Bridge.
	14	6 { Congaree Creek. Columbia.	
	15		
	16-17	7.. Charleston.	
	18	8.. Mount Clio.	
	26	9.. Lynch Creek.	
Mar. 2	1	Chesterfield.	
2-3		Cheraw.	
3		Florence.	
	23	2.. Sumterville.	
April 9	1..	Sumterville.	
	18	2.. Boykin's Mills.	
	19	2.. Swift Creek.	

NORTH CAROLINA.

DATE.	INDEX No.	ENGAGEMENT.
1861		
Aug. 28-29		... <b>Fort Hatteras.</b>
Oct. 5	1..	Chickamiecomico.
1862		
Feb. 8		... <b>Roanoke Island</b>
	10	1.. Elizabeth City.
Mar. 14		.. <b>Newbern.</b>
April 14	1..	Pollocksville.
	19	2. Camden.
	25	.. <b>Fort Macon.</b>
May 14	1..	Trenton Bridge.
	19	2.. Clinton.
	22	3.. Near Newbern.
	31	4.. Greenville Road.
June 3	1..	Legare's Point.
	27	2.. Swift Creek Bridge.
July 9	1..	Hamilton.
	26	2.. Young's Cross Roads.
Sep. 2	1..	Plymouth.
	6	2.. Washington.
Oct. 11	1..	Cape Fear River.
Nov. 3	1..	Rawle's Mills.
	11	2.. Newbern.
	18	3.. Cove Creek
Dec. 12-18		... Foster's Expedition to Goldsboro'.
	12	1.. Trenton.

## NORTH CAROLINA—(Cont'd).

DATE.	INDEX NO.	ENGAGEMENT.
1862		
Dec. 13	2	..South West Creek.
14	3	..Kingston.
16	4	..Whitehall.
17	5	..Goldsboro'.
1863		
Jan. 17	1	..Pollocksville and North East River.
Feb. 27	1	..Near Newbern.
Mar. 4	1	..Skeet.
14	2	..Newbern.
April 4	1	..Washington.
9	2	..Blount's Mills.
28	3	..Dover Road.
May 22	1	..Gum Swamp.
23	2	..Bachelor's Creek.
July 6	1	..Quaker's Bridge.
26	2	..Pattacassey Creek.
Aug. 18	1	..Pasquotank.
Nov. 1	1	..Washington.
25	2	..Greenville.
26	3	..Warm Springs.
Dec. 18	1	..Indian Town.
30	2	..Greenville.
1864		
Feb. 1-2-3	1	..Bachelor Creek.
5	2	..Quallatown.
29	3	..Newbern.
April 17-20	1	..Plymouth.
May 5	1	..Ram "Albermarle," Roanoke River.
26	2	..Torpedo Explosion on Bachelor's Creek.
Oct. 31	1	..Plymouth.
Dec. 9	1	..Expedition into West and North Carolina.
Jan. 14	1	..Expedition to Hamilton.
9-12	1	..Expedition to Hamilton.
25	2	..Fort Fisher.
1865		
Jan. 13-15	1	.. <b>Fort Fisher.</b>
16	1	..Explosion of Magazine at Fort Fisher.
19	2	..Half Moon Battery, Sugar Loaf Hill.
Feb. 11	1	..Sugar Loaf Battery, Federal Point.
18	2	..Fort Anderson.
20	3	..Town Creek.
22	4	..Wilmington.
Mar. 7	1	..Rockingham.
8-10	2	..Wilcox Bridge, Wise's Fork.
10	3	..Munro's Cross Roads.
15	3	..Taylor's Hole Creek.
16	4	.. <b>Averysboro'.</b>
13	5	..Silver Run.
14	6	..Kingston.
10-21	1	.. <b>Bentonville.</b>

## NORTH CAROLINA—(Cont'd).

DATE.	INDEX NO.	ENGAGEMENT.
1865		
Mar. 21	7	{ Goldsboro'.
24	7	{ Coxe's Bridge.
April 1	1	..Boone.
3	2	..Salem.
4	3	..Deep River Bridge.
10	4	..Neuses River.
12	5	..Grant's Creek, Salisbury.
19	6	{ Dallas.
19	6	{ Catawba River.
23	7	..Suwano Gap.

VIRGINIA.

DATE.	INDEX NO.	ENGAGEMENT.
1861		
April 18	1	..Harper's Ferry.
June 1	1	..Fairfax Court House.
10	1	.. <b>Great Bethel.</b>
17	2	..Vienna.
17	3	..Edward's Ferry.
26	4	..Patterson Creek.
27	5	..Mathias' Point.
July 5	1	..Newport News.
7	2	..Great Falls.
17	3	..Bunker Hill.
18	4	..Blackburn's Ford.
21	1	.. <b>BULL RUN.</b>
Aug. 7	1	..Hampton.
8	2	..Lovettsville.
27	3	..Ball's Cross Roads.
31	4	..Munson's Hill.
Sept. 2	1	..Behers Mills.
11	2	..Louisville.
15	3	..Pritchard's Mills.
Oct. 16	1	..Bolivar Heights.
21	1	..Ball's Bluff.
Nov. 12	1	..Occoquan Creek.
26	2	..Drainesville.
26	3	..Hunter's Mills.
Dec. 3	1	..Vienna.
4	2	..Annandale.
11	3	..Dam No. 4.
20	4	..Drainesville.
22	5	..New Market Bridge.
1862		
Jan. 4	1	..Huntersville.
4	2	..Bath.
7	3	..Blue Gap.
29	4	..Occoquan Bridge.
Feb. 8	1	..Linn Creek.
13	2	..Blooming Gap.
24	3	..Mason's Neck.

VIRGINIA—(Cont'd).

DATE.	INDEX No.	ENGAGEMENT.
1862		
Mar.	5	1...Occoquan.
	9	2...Hampton Roads.
	10	3..Burke's Station.
	16	4..Acquia Creek.
	23	..Winchester.
	27	5..Strasburg.
	28	6..Middleburg.
April	2	1..Thoroughfare Gap.
	4	2..Great Bethel.
	5	} <b>Siege of Yorktown.</b>
May	3	
	11	3..Skirmish before Yorktown.
	12	4..Monterey.
	16	5..Lee's Mills.
	18	6..Falmouth.
	26	7...Before Yorktown.
May	4	1..Cheese Cake Church.
	5	..Williamsburg.
	7	2..West Point.
	7	3..Somerville Heights.
	8	4..MacDowell.
	9	5...Slatersville.
	10	6..Norfolk.
	15	7..Linden.
	15	8..Fort Darling.
	23	9 Front Royal.
	23	10..Lewisburg.
	23	11..Bucktown Station.
	24	12..Middletown.
	24	13..Newtown.
	24	} 14 { New Bridge.
	24	
	25	15..Winchester.
	27	..Hanover Court House.
	28	} 16 { Charlestown.
	28	
	30	17..Front Royal.
May	31	} ..SEVEN PINES.
June	1	
	1	} 1..Strasburg.
	2	
	6	..Harrisburg.
	8	..Cross Keys.
	9	..Port Republic.
	13	2..Old Church.
	14	3..Tunstall Station.
	18	4..Williamsburg Road.
	25	5..Oak Grove.
	26	} ..Seven Days' Retreat.
July	1	
June	26	6..Mechanicsville.
	27	} GAINES'S MILLS.
	28	
	29	7..Savage Station.
	29	} 8 { Peach Orchard.
	29	

VIRGINIA—(Cont'd)

DATE.	INDEX No.	ENGAGEMENT.		
1862				
July	30	9..White Oak Swamp.		
	1	..Malvern Hill.		
	2	} 1 { Milford.		
	3		} 1 { Haxals.	
	5			} 1 { Sperryville.
	11			
	12	3..Nr. Culpepper.		
	13	4..Fairfax.		
	20	5..Turkey Island Bridge.		
	23	6..North Anna River.		
	25	7 Orange Court House.		
	31	8..Coggin's Point.		
Aug.	2	1..Orange Court House.		
	3	2..Sycamore Church.		
	4	3..White Oak Swamp.		
	5	4..Malvern Hill.		
	6	} 5 { Beech Creek.		
	6		} 5 { Matapony.	
	9	..Cedar Mountain.		
	20	6..Brandy Station.		
	21	7..Kelley's Ford.		
	23	8..Catlett's Station.		
	23	} 9 { Skirmishes on Rappahannoc.		
	25			
	27	10..Bull Run Bridge.		
	27	11..Kettle Run.		
	28	12...Shady Springs.		
	28	} { Grovetown and		
	29		} { Gainesville.	
	30	..Bull Run No. 2.		
Sep.	1	..Chantilly.		
	6	1 Martinsburg.		
	6	2..Cacapon Bridge.		
	9	3..Williamsburg.		
	12	} ..Harper's Ferry.		
	15			
	17	4..Goose Creek.		
	20	5..Blackford's Ford.		
	22	6..Ashby's Gap.		
	23	7..Sutton.		
	26	8..Warrenton Junction.		
	28	9..Blackwater.		
Oct.	1	1..Shepherdstown.		
	3	2..Reconnaissance by Gunboats.		
	6	3..Charleston.		
	9	4..Aldie.		
	15	5..Carsville.		
	16	6..Charleston.		
	17	7..Thoroughfare Gap.		
	18	8..Haymarket.		
	21	9..Lovettesville.		
	22	10..Hedgeville.		
	24	11..Catlett's Station.		
	24	12..Manassas Junction.		
	24	13..Blackwater.		
	31	14..Aldie.		



## VIRGINIA—(Cont'd).

DATE.	INDEX NO.	ENGAGEMENT.
1862		
Oct.	31	15.. Franklin.
Nov.	1	1.. Philomont.
	2	2.. Snicker's Gap.
	2	3.. Bloomfield.
	3	4.. Upperville.
	5	5.. Manassas Gap.
	5	6.. Barbee's Cross Roads.
	5	7.. New Baltimore.
	8	8.. Rappahannock Bridge.
	9	9.. Fredericksburg.
	9	10.. Moorefield.
	15	11.. Fayetteville.
	17	12.. Gloucester.
	26	13.. Cold Knob Mts.
	28	14.. Hartwood Church.
Dec.	1	1.. Charleston.
	2	2.. Franklin.
	2	3.. King George C. H.
	12	4.. Zuni.
	13	.. <b>FREDERICKSBURG.</b>
	19	5.. Occoquan.
	22	6.. Isle of Wight C. H.
	27	7.. Dumfries.
	28	8.. Suffolk.
	29	9.. Occoquan.
1863		
Jan.	10	1.. Catlett's Station.
	19	2.. Burnt Ordinary.
	30	3.. Deserted House.
Feb.	7	1.. Williamsburg.
	9	2.. Summerville.
	10	3.. Gloucester Pt.
	13	4.. Smithfield.
	14	5.. Brentville.
	16	6.. Romney.
	25	7.. Hardwood Church.
	26	8.. Strasburg Road.
Mar.	8	1.. Fairfax C. H.
	17	2.. Blackwater.
	17	3.. Kelly's Ford.
	29	4.. Williamsburg.
April	1	1.. Broad Run.
	11	2.. Whittaker's Mills.
	12	.. Siege of Suffolk.
May	14	3.. West Branch.
April	17	4.. South Key.
	18	5.. Battery Huger.
	22	6.. Strasburg Road.
	23	7.. Chuckatuck.
	29	8 { Fitzhugh's Crossing.
	30	8 { Fitzhugh's Crossing.
	30	8 { Spottsylvania.
May	1-4	.. <b>CHANCELLORSVILLE.</b>

## VIRGINIA—(Cont'd).

DATE.	INDEX NO.	ENGAGEMENT.
1863		
May	1-4	Stoneman's Raid.
	1	Rapidan Station.
	1	Louisa C. H.
	3	Warrenton Junction.
	4	Shannon Hill.
	4	Tunstall Station.
	1	2 { South Quay Bridge
	3	2 { Nansemond River.
	14	3.. Warrenton Junction.
	15	4 { Carsville and Suffolk.
	16	4 { Expedition under Foster.
	16	5 { Piedmont Station.
	18	5 { Carsville.
	19	5 { Winchester.
	16	6.. Cripple Creek.
	16	7.. Berry's Ferry.
	20	8 Glendenin's Raid.
	28	8 Glendenin's Raid.
	30	9.. Greenwich.
June	4	1.. Frying Pan.
	5	2.. Franklin's Crossing.
	6	3.. Berryville.
	9	4 { Fort Lyons.
	9	4 { <b>Beverley Ford</b> and Bran-
		dy Station.
	11	4.. Middletown.
	12	5 { Berryville.
	13-15	5 { <b>Winchester.</b>
	14	5.. Martinsburg.
	17	6.. Aldie.
	19	7.. Middleburg.
	21	8.. Upperville.
	26	9.. South Anna.
	26	10.. Baltimore Cross Roads.
	27	11.. Fairfax.
July	2	1.. Baltimore Cross Roads.
	2	2.. Bottom's Bridge.
	2	3.. Beverley.
	7	4.. Harper's Ferry Bridge.
	12	5.. Ashby Gap.
	14	6.. Nr. Bolivar Heights.
	15	7.. Hall Town.
	16	8.. Shepherdstown.
	21	9.. Manassas Gap.
	21	10 Chester Gap.
	22	10 Chester Gap.
	23	11.. Wapping Heights.
Aug.	1-3	1.. Rappahannock Station.
	5	2.. Dutch Gap.
	7	3.. Waterford.
	24	4.. Coyle Tavern.
	24	5.. King George City.
	26	6.. Rocky Gap.
	29	7.. Bottom's Bridge.
Sep.	1	1.. Barbee's Cross Roads.
	6	2.. Brandy Station.

VIRGINIA—(Cont'd).

DATE.	INDEX No.	ENGAGEMENT.
1863		
Sept.	8 3	Bath.
	13 } 4	{ Culpepper.
	14 } 4	{ Raccoon Ford.
	15 5	Smithfield.
	19 } 6	{ Raccoon Ford.
	21 } 6	{ Whitesford.
	22 } 6	{ Jack's Shop.
	25 7	Upperville.
Oct.	5 1	Harpers's Ferry.
	8 2	Charlestown.
	10 3	Rapidan.
	10 4	James City.
	12 5	Jeffersonton.
	12-13 6	Culpepper, White Sulphur Springs.
	13 } 7	{ Bulltown.
	14 } 7	{ Salt Lick.
	14 8	Auburn.
	14 9	Bristow Station.
	15 10	Macleans Ford.
	11 11	Hedgeville.
	15 12	Blackburn Ford.
	17 13	Rapidan.
	18 14	Charlestown.
	18 15	Berryville.
	22 16	Beverley Ford.
	24 17	Bealtown.
Nov.	6 1	Droop Mountain.
	7 } 7	{ <b>Rappahannock St'n.</b>
	7 } 7	{ Kelly's Ford.
	7 } 7	{ Stevensburg.
	8 2	Money Run.
	16 3	Charles City Cross Roads.
	17 4	Mount Jackson.
	24 5	<b>Mine Run.</b>
Dec.	8-21	Averill's Raid.
	15 1	Sangster's Station.
1864		
Jan.	1 1	Rectortown.
	3 2	Jonesville.
	10 3	London Heights.
	14 4	Bealtown.
	27 5	Cameron.
Feb.	1 1	Smithfield.
	6 2	Morton's Ford.
	7 3	Barnett's Ford.
	14 4	Brentsville.
	22 5	Drainesville.
	29 6	Taylor'sville.
Mar.	1 1	Standardsville.
	1 2	Atlees.
	1 3	Brooks' Turnpike.
	2 4	Nr. Walkerton.
	3 5	Tunstall Station.
	9 6	Suffolk.
	10 7	Cabletown.

VIRGINIA—(Cont'd).

DATE.	INDEX No.	ENGAGEMENT.
1864		
Mar.	13 8	Carrollton Store.
April	1 1	Nr. Rappahannock.
	10 2	Little Cacapon.
	14 3	Smithfield.
	15 4	Bristow Station.
May	4-12	Kantz's Cavalry Raid.
	5	Wall Bridge.
	7	Stony Creek Station.
	9 } 1	{ Jarrett's Station.
	9 } 1	{ White's Bridge.
	12 } 1	{ Petersburg Railway.
	16 } 1	{ Belcher's Mills.
	5 2	Craig's Meeting House.
	5-7	<b>THE WILDERNESS.</b>
	6-7	Richmond & Petersburg R.R.
	9-18	<b>SPOTTSYLVANIA</b> , includes Todd's Tavern.
	8 3	Jeffersonville.
	9-13	Sheridan's Raid.
	9 4	Childsburg.
	9 5	Beaver Dam Station.
	10 6	Ground Squirrel Church Bridge.
	11 7	Ashlam.
	11 8	Yellow Tavern.
	12 9	Meadow Bridge.
	9-10 10	Swift Creek.
	9-10	Cloyd's Mountain.
	9-10	Cove Mountain.
	12-16 12	Fort Darling.
	13 13	Point Lookout.
	14 } 14	{ Road's Hill.
	14 } 14	{ Newmarket.
	16-20 15	Fredericksburg Road.
	20 16	Downer's Bridge.
	20 17	Millford Station.
	23	<b>North Anna River.</b>
	24 18	Wilson's Wharf.
	27	Hanoverton.
	28 } 19	{ Hawes Shop.
	29-31 } 19	{ Tocopotomy.
		Hanover Court House.
	30 20	Ashton.
		Old Church.
June	1-12	<b>COLD HARBOR</b> , includes :
	10-11	Old Church,
	11	Trevdlyan Station,
	13	White Oak Swamp Bridge,
	15	Malvern Hill,
	21	Whitehouse Landing,
	23	Jones' Bridge,
	24	Samaria Church.
June	2 1	<b>Burmuda Hundred.</b>
	5 2	Piedmont.
	10 3	Petersburg.
	11 4	Wilson's Landing.

## VIRGINIA—(Cont'd).

DATE.	INDEX No.	ENGAGEMENT.
1864		
June 14	5	Buchanan.
16	6	Otter Creek.
16	7	Pearson's Farm.
17-18	8	Lynchburg.
20	9	White House.
20	10	Liberty.
21	11	Salem.
21	12	Buford's Gap.
22-30		Wilson's Raid.
22	13	Reams Station.
22	14	Nottoway C. H.
22	15	Weldon Railway.
28	16	Stony Creek.
29	17	Reams Station.
29	18	Stanton Bridge.
July 3	1	North Mountain.
3	2	Lee Town.
4-7		Bolivar.
6	3	Mount Zion Church.
12	4	Lee's Mills.
17		Snicker's Gap.
18		Snicker's Ferry.
18	5	Ashby's Gap.
19	6	Darksville.
20		Winchester.
23		Kernstown.
21	7	Deep Bottom.
24		Winchester.
27	8	Deep Bottom.
30	9	Mine Explosion.
30	10	Lee's Mills.
Aug. 4	1	New Creek.
5	2	Cabin Point.
7	3	Moorefield.
10	4	Berryville Pike.
11	5	Sulphur Springs.
13	6	Nr. Snicker's Gap.
14	7	Gravel Hill.
14-18	8	Strawberry Plains.
15	9	Fisher's Hill.
16	10	Crooker Run.
17	11	Winchester.
18	12	Six Mile House.
19	13	Snicker's Gap.
19	14	Martinsburg.
21	15	Summit Point.
24-25	16	Bermuda Hundred.
24	17	Hall Town.
25	18	Smithfield.
25	19	Reams Station.
29	20	Wormley's Gap.
29	21	Smithfield.
29	22	Arthur's Swamp.
26	23	Hall Town.
Sep. 3	1	Berryville.
3	2	Darksville.
7	3	Dutch Gap.

## VIRGINIA—(Cont'd).

DATE.	INDEX No.	ENGAGEMENT.
1864		
Sep. 10	4	Fort Hell.
13	5	Socks Ford, Opequan.
16	6	Sycamore Church.
17	7	Fairfax Station.
17	8	Belcher's Mills.
18	9	Martinsburg.
19		Winchester.
21	10	Front Royal Pike.
22		Fisher's Hill.
24	11	Luray.
26		Brown's Gap.
27	12	Weyer's Cave.
28	13	Waynesboro'.
28-30	14	Newmarket Heights.
28	15	Fort Sedgewick.
30	16	Preble's Farm.
30	17	Arthur's Swamp.
Oct. 1	1	Charles City Cross Roads.
1	2	Yellow Tavern.
2	3	Waynesboro'.
2	4	Saltville.
2	5	Gladesville.
6	6	North Shenandoah.
7	7	Newmarket.
7	8	Derbytown Roads.
8		Boydton Plank Road.
9	9	Tow's Brook.
11	10	Stony Creek Station.
13		Reconnaissance to Strasburg.
22	11	Gun Boats on James River.
17	12	Cedar Run Church.
19		Cedar Creek.
27	13	Hatcher's Run.
27	14	Fair Oaks.
Nov. 5	1	Fort Sedgewick.
12	2	Newtown.
17	3	Chester Station.
18	4	Meyerstown.
22	5	Roods Hill.
30	6	Bermuda Hundred.
Dec. 1	1	Stony Creek Station.
6	2	White Post.
8-9	3	Hatcher's Run.
8-28	4	Raid to Gordonsville.
7-11	5	Weldon Railroad.
		Belleville & Hicksford.
12-24		Stoneman's Raid.
15	6	Abingdon.
15	7	Glade Springs.
16	8	Marion.
18	9	Marion.
24	10	Moccasin Gap.
17-18	11	Millwood.
20	12	Madison C. H.
20	13	Lace's Springs.
23	14	Jack's Shop.

**VIRGINIA—Continued.**

DATE.	INDEX NO.	ENGAGEMENT.
1865		
Jan.	24	1...Fort Brady.
	25	2..Powhattan.
Feb.	5	1..Dabney's Mills.
	18	2..Ashby's Gap.
	27	..Sheridan's Raid.
Mar.	25	3 Mount Crawford.
Feb.	29	1 Waynesboro'.
Mar.	6	2 South Fork Shenandoah.
	15	3 Ashland.
	15	4..South Anna River.
	21	5..Hamilton.
	25	6...Fort Steadman.
	25	7..Petersburg.
	29	8 { Quaker Road.
	31	8 { Boydtown.
	31	8 { Dinwiddie Court House.
April	1	..Five Forks.
	2	..Fall of Petersburg.
	3	{ Namozin Church.
	3	{ Occupation of Richmond.
	5	{ Amelia Springs.
	6	{ Sailor's Creek.
	6	{ High Bridge.
	7	{ Farmville.
	8-9	..APPOMATTOX COURT HOUSE.
	17	2..Berryville.

**MARYLAND.**

DATE.	INDEX NO.	ENGAGEMENT.
1861		
April	19	1..Streets of Baltimore.
July	2	1..Falling Waters.
Aug.	5	1...Point of Rocks.
1862		
Sept.	7	1..Poolesville.
	9	2..Nolansville.
	10	3..Sugar Loaf Mountain.
	12	{ Frederick.
	14	{ Turner's & Crampton's Gap.
	15	5..Boonsboro'.
	17	..ANTIETAM.
	20	6..Williamsport.
Oct.	11	1..Mouth of Monocacy.
1863		
June	11	1..Seneca.
	29	2..Westminster.
July	4	1..Monterey Gap and Smithsburg.

**MARYLAND—(Cont'd).**

DATE.	INDEX NO.	ENGAGEMENT.
1863		
July	6	2 { Hagarstown.
	6	2 { Williamsport.
	7-9	{ Boonsboro'.
	11	{ Hagarstown.
	12	{ Funkstown.
	14	4..Falling Waters.
Sept.	22	1..Rockville.
1864		
June	9	1..Point of Rocks.
July	4	1..Point of Rocks.
	5	2..Hagarstown,Pleasant Valley.
	7	3..Hagar's Mountain and Middleton.
	7	4..Solomon's Gap, Frederick City.
	9	5..Monocacy.
	29	6..Clear Springs.
Aug.	1	1..Cumberland.

**PENNSYLVANIA.**

DATE.	INDEX NO.	ENGAGEMENT.
1863		
June	20	1..Greencastle.
	24	{ McConnellsburg.
	29	{ McConnellsburg.
	29	{ Sporting Hill, near Harrisburg.
	30	{ Hanover.
	30	{ Hanover.
July	1-3	..GETTYSBURG, includes :
	3	Fairfield.
	5	Fairfield.
1864		
July	30	1..Chamberburg.

**WEST VIRGINIA.**

DATE.	INDEX NO.	ENGAGEMENT.
1861		
June	3	1..Philippi.
	11	2..Romney.
	17	3..New Creek.
July	6	1..Middle Creek Fork.
	8	2..Laurel Hill.
	11	..Rich Mountain.
	12	{ Barboursville.
	12	{ Beverley.

## WEST VIRGINIA—(Cont'd).

DATE.	INDEX No.	ENGAGEMENT.
1861		
July	14	.. <b>Carrick's Ford.</b>
	17	4.. Learytown.
Aug.	13	1.. Grafton.
	20	2.. Hawk's Nest.
	26	3 { Cross Lanes.
	27	3 { Wayne Court House.
Sept.	1	1 { Boone Court House.
	2	1 { Worthington.
	7	1 { Petersburg.
	10	2 { Carnifex Ferry.
	11	3.. Elkwater.
12-13	4..	<b>Cheat Mountain.</b>
	18	1 { Barboursville.
	23	4 { Romney.
	25	1 { Chapmansville.
Oct.	3	1.. Green Briar.
	26	2.. Romney.
Nov.	10	1 { Guyandotte.
	10	1 { Gauley Bridge.
	19	2.. Wirt Court House.
Dec.	13	1.. Camp Alleghany.
1862		
Jan.	8	1.. Dry Forks.
April	17	1.. Holly River.
	23	2.. Grass Lick.
May	1	1.. Clark's Hollow.
	15	2.. Princeton.
	15	3.. Princeton.
	18	4.. Princeton.
July.	26	1.. Buchanan.
Aug.	11	1.. Wyoming Court House.
	31	2.. Weston.
Sept.	10	1.. Fayetteville.
	11	2.. Cotton Hill.
	12	3.. Charlestown.
	27	4.. Buffalo.
1863		
Jan.	3	1.. Moorefield.
	5	2.. Hardie County.
Mar.	28	1.. Hurricane Bridge.
	30	2.. Point Pleasant.
April	25	1.. Greenland Gap.
	29	2.. Fairmont.
June	21	1.. Low Creek.
July	18	1.. Wytheville.
Aug.	25-30	1.. Averill's Raid.
Sept.	5	1.. Moorefield.
	11	2.. Moorefield.
Nov.	5	1.. Mill Point.
	13	2.. Mill Creek Valley.
Dec.	2	1.. Walker's Ford.
	12	2.. Big Sewell.
1864		
an.	29	1.. Medley.

## WEST VIRGINIA—(Cont'd).

DATE.	INDEX No.	ENGAGEMENT.
1864		
Feb.	1	1 { New Creek Valley.
	3	1 { Patterson Creek & Springfield
	4	1 { Moorefield.
	12	1 { Rook House.
May	6	1 Princeton.
June	3	1 { Panther Gap.
	6	1 { Buffalo Gap.
	6	1 { Greenland Gap Rd.
	10-11	2 { Lexington.
	13	2 { White Post.
	27	3.. Charleston.
July	3	1.. Hammack's Mills.
Oct.	29	1.. Beverley.
Dec.	28	1.. Fort Kelly.
1865		
Jan.	11	1.. Beverley.

KENTUCKY.

DATE.	INDEX No.	ENGAGEMENT.
1861		
Sep.	26	1.. Lucas Bend.
Oct.	4	1.. Buffalo Hill.
	8	2.. Hillsboro'.
	12	3.. Upton Hill.
	21	4.. Wild Cat.
	21	5.. Wild Cat.
	23	6.. West Liberty.
	26	7.. Saratoga.
	29	8.. Woodbury.
Nov.	9	1.. Picketown.
	17	2.. Cypress Bridge.
Dec.	12	1.. Bagdad.
	17	2.. Rowlett's Station.
	28	3.. Sacramento.
1862		
Jan.	7	1.. Jenny's Creek.
	10	2.. Middle Creek.
	19-20	3.. <b>Mill Springs.</b>
Feb.	1	1.. Bowling Green.
	14	2 { Flat Lick Fords.
	15	2 { Bowling Green.
May	5	1.. Lockridge.
June	11	1.. Monterey.
	18	2.. Cumberland Gap.
July	9	1.. Tomkinsville.
	11	2.. New Hope.
	12	3.. Lebanon.
	17	4.. Cynthiana.
	29	5 { Mt. Sterling.
	30	6.. Russellville.
	30	6.. Paris.

## KENTUCKY—(Cont'd).

DATE.	INDEX No.	ENGAGEMENT.
1862		
Aug. 22	1.	Crab Orchard.
23	2.	Big Hill.
26	3.	Madisonville. Danville.
30	4.	<b>Richmond.</b>
31	4.	<b>Yates' Ford.</b>
Sept. 2	1.	Morgansville.
3	2.	Slaughterville.
3	2.	Geiger Lake.
3-12	3.	Siege of Frankfort.
14-16	3.	Mumfordsville.
17	4.	Florence.
19-20	5.	Owensburg. Shepherdsville.
21	5.	Augusta.
27	5.	Russellville.
30	6.	Mumfordsville.
21	6.	Mumfordsville.
Oct. 1	1.	Floyd's Fork. Mount Washington.
2	1.	Mount Washington.
4	1.	Bargetown.
6	1.	Springfield.
2	2.	Olive Hill.
5	3.	Glasgow. Madisonville.
5	3.	Madisonville.
8	4.	<b>Perryville.</b>
9	5.	Lawrenceburg.
10	5.	Harrodsburg.
14	6.	Stanford.
17	6.	Lexington.
23	6.	Point Lick.
23	6.	Big Hill Road.
24	7.	Morgantown.
28	7.	Williamsburg.
Nov. 5	1.	Greenville Road.
6	2.	Leatherwood.
6	2.	Garricksberg.
9	3.	Perry County.
Dec. 4	1.	Wireman's Shoals.
Dec. 24	2.	Glasgow.
26	2.	Bacon Creek.
25	3.	Green's Chapel.
27	3.	Bear Wallow.
27	4.	Elizabeth Town.
28	4.	Muldraugh's Hill.
1863		
Feb. 23	1.	Athens.
Mar. 11	1.	Paris.
22	2.	Mt. Sterling.
24	3.	Danville.
30	4.	Dutton's Hill.
April 15	1.	Pikeville.
20	2.	Celina.
22	3.	Tomkinsville.
28	4.	Howe's Ford.

## KENTUCKY—(Cont'd).

DATE.	INDEX No.	ENGAGEMENT.
1863		
May 1	1.	Monticello.
11	2.	Horse Shoe Bend.
13	3.	South Ninon.
25	4.	Fishing Creek.
June 9	1.	Monticello.
11	2.	State Creek.
13	3.	Wilson's Creek.
16	4.	Triplett's Bridge.
27	5.	Beaver Creek.
July 2	1.	Marrowbone.
3	1.	Columbia.
4	1.	Green River Bridge.
5	1.	Lebanon.
8	1.	Brandenburg.
28	2.	Richmond and Lexington.
29	2.	Paris.
30	3.	Irving.
Aug. 27	1.	Clark's Neck.
Oct. 5	1.	Glasgow.
Nov. 30	1.	Salyersville.
Dec. 7	1.	Creelsboro'.
1864.		
Jan. 9	1.	Turman's Ferry.
12	2.	Mayfield.
Feb. 28	1.	Dukedom.
Mar. 24	1.	Union City.
25	2.	Fort Anderson.
April 6	1.	Quicksand Creek.
13	2.	Paintsville.
14	3.	Half Mount.
19	4.	Pound Gap.
May 16	1.	Pound Gap.
June 9	1.	Mount Sterling.
10	2.	Frankford.
10	3.	Lexington.
10	4.	Princeton.
10	5.	Cynthiana & Keller's Bridge.
11	6.	Cynthiana.
July 1	1.	Henderson.
30	2.	Lebanon.
Aug. 22	1.	Canton.
27	2.	Owensboro'.
29	3.	Ghent.
Sept. 25	1.	Henderson.
Oct. 21	1.	Harrodsburg.
Dec. 12	1.	Elkton.
16	2.	Hopkinsville.
24	3.	Elizabethtown.
1865		
Jan. 5	1.	Smithfield.
18	2.	Near Columbus.
25	3.	Simpsonville.
Feb. 18	1.	Fort Jones.

MISSOURI.

DATE.	INDEX No.	ENGAGEMENT.
1861		
May	10	1.. Camp Jackson.
June	17	1.. Booneville.
	17	2.. Independence.
	18	3.. Camp Cole.
July	5	.. <b>Carthage.</b>
	10	1.. Monroe Station.
	16	Millsville.
	17	2 { Fulton.
	17	{ Martinsburg.
18-19		{ Harrisonville & Parkersville.
	22	3 { Forsyth.
	22	{ Aetna.
	24	4.. Blue Mills.
	26	5 { Lane's Prairie.
		{ Harrisonville.
Aug.	2	1 { Dug Springs.
	5	{ Athens.
	10	2.. Potosi.
	10	<b>Wilson's Creek.</b>
	17	{ Brunswick.
	19	{ Charlestown.
	20	3 { Lookout Station.
	21	{ Jonesboro'.
	29	4.. Lexington.
Sep.	1	{ Bennett's Mills.
	2	{ Dallas.
	2	1 { Dry Wood.
	4	{ Shelbina.
	12	2 { Black River.
	17	{ Morristown.
12-20		.. Siege of Lexington.
	13	{ Booneville.
	17	{ Blue Mills.
	21	3 { Papinsville.
	22	{ Elliott's Mills.
	27	{ Shanghai.
Nov.	7	1.. <b>Belmont.</b>
	11	2.. Little Blue.
	18	3.. Palmyra.
	24	4.. Lancaster.
	24	5.. Johnstown.
	26	6.. Independence.
	29	7.. Black Walnut Creek.
Dec.	3	1.. Salem.
	4	2.. Dunksburg.
	11	3.. Bertrand.
	18	4.. Milford.
	24	5.. Wadesburg.
	28	6.. Mount Zion.
1862		
Jan.	3	1.. Hunniwell.
	4	2.. Calhoun.
	8	3.. Charlestown.
	8	4.. Silver Creek.
	9	5.. Columbus.

MISSOURI—(Cont'd).

DATE.	INDEX No.	ENGAGEMENT.
1862		
Jan.	22	6.. Knob Noster.
Feb.	14	1.. Marshfield.
	17	2.. Sugar Creek.
	18	3.. Independence.
	26	4.. Keylesville.
Mar.	1	1.. Sykestown.
	3	{ New Madrid.
	7	2 { Fox Creek.
	9	3.. Mountain Grove.
	12	4.. Lexington.
	12	5.. Lebanon.
	13	6.. New Madrid.
	22	{ Independence.
	23	7 { Carthage.
	26	8.. Warrensburg.
	26	9.. Hinnonsville.
	28	10.. Warrensburg.
April	2	1.. Putnam's Ferry.
	12	2.. Little Blue.
	14	3.. Diamoud Grove.
	14	4.. Walkersville.
	14	5.. Montavallo.
	26	6.. Turnback Creek.
May	4	1.. Licking.
	11	2.. Bloomfield.
	15	3 { Chalk Bluffs.
		{ Butler.
	22	4.. Florida.
	27	5.. Osceolo.
June	17	1.. Warrensburg.
	23	2.. Raytown.
July	8	1.. Black River.
	8	2.. Lotspeach Farm.
	9	3.. Clinton.
	11	4.. Pleasant Hill
	18	5.. Memphis.
	23	6.. Florida.
	23	7.. Columbus.
	24	{ Bott's Farm.
	24-25	{ Santa Fe.
	27	8 { Brown Springs.
	28	{ Moore's Mills.
	29	{ Bollinger's Mills.
	25	9 { Mountain Store,
	26	{ Patten.
	26	10.. Greenville.
Aug.	1	1.. Newark.
	2	2.. Clear Creek.
	3	{ Charlton Br.
	6	3 { Montavallo.
	8	{ Panther Creek.
	6	4.. Kirksville.
	9	{ Stockton.
	11	5 { Independence.

## MISSOURI—(Cont'd).

DATE.	INDEX NO.	ENGAGEMENT.
1862		
Aug. 10-13	6..	Grand River Raid. Lee's Ford. Charlton River. Walmer Creek. Campton Ferry. Switzer's Mills. Yellow Creek.
	16	7.. Lone Jack.
	20	8.. Union Mills.
	24	9.. Dallas.
	24	10.. Coon Creek.
	25	11.. Bloomfield.
	28	12.. Howard Co.
Sep. 11-13	1..	Bloomfield.
	13	2 { Newtonia.
	15	2 { Sherburne.
	19	3.. Hickory Grove.
	20	4.. Shirley's Ford.
	21	5.. Carsville.
	22	6.. Sturgeon.
	26	7.. Cambridge.
Oct.	6	1.. Liberty.
	14	2.. Hazel Bottom.
	20	3.. Auxvoix River.
	20	4.. Marshfield.
	24	5.. Grand Prairie.
	27	6.. Pitman's Ferry.
	28	7.. Clarkson.
	29	8.. Butler & Osage.
Nov.	3	1.. Harrison.
	5	2.. Lamar
	7	3.. Big Beaver Creek.
	24	4.. Beaver Creek.
	25	5.. Crawford County.
Dec.	2	1.. Osark.
1863		
Jan.	7	1.. Springfield.
	8	2.. Springfield.
	11	3.. Hartsville.
Feb.	3	1.. Mingo Swamp.
	5	2.. Bear Creek.
	3-8	3.. Independence.
	19	4.. Spring River.
Mar.	22	1.. Blue Springs.
	30	2.. Massacre,
April	8	1.. St. Francis Co.
	20	2.. Patterson.
	29	3.. Castor River.
	30-31	4.. Chalk Bluff.
May	16	1.. Carthage.
	18	2.. Sherwood.

## MISSOURI—(Cont'd).

DATE.	INDEX NO.	ENGAGEMENT.
1863		
May	19	3.. Richfield.
	18	4.. Bushy Creek.
June	1	1.. Rocheport.
	17	2.. Westport.
July	28	1.. Marshall.
	30	2.. Saline.
Aug.	7	1.. New Madrid.
	13	2.. Pineville.
	25	3.. Waynesville.
Sep.	7	1.. Bear Skin Lake.
	12	2.. Texas Co.
	25	3.. Red Bone Church.
Oct.	4	1.. Neosho.
	8	2.. Warsaw.
	16	3.. Cross Timbers.
1864		
Feb.	4	1.. Rolling Prairie.
	5	2.. Cape Gerardeau.
April	28	1.. Offett's Knob.
	29	2.. Snia Hills.
May	21	1.. Snia Hills.
	26	2.. Lane's Prairie.
	28	3.. Pleasant Hills.
June	14	1.. Lexington.
July	3	1.. Platt City.
	6	2.. Clay County.
	6	3.. Little Blue.
	14-15	4.. Osark.
	17	5.. Fredericksburg.
Sep. 17-20	1..	Doniphan and Black River.
	23	2 { Rockport.
	24	2 { Fayette.
	23	3.. Blackwater.
	26	4 { Fort Davidson.
	27	4 { Fort Davidson.
	27	4 { Massacre at Centralia.
	29	5 { Leesburg.
	30	5 { Harrison.
Oct.	6	1.. Prince's Place.
	7	2.. Moreau Bottom.
	9	3 { Boonsville.
	11	3 { Boonsville.
	15	4 { Glasgow.
	15	4 { Sedalia.
	19	5.. Lexington.
	21	6 { Little Blue.
	22	6 { Independence.
	22	6 { Westport.
	24	7.. Coldwater Grove.
	28	8 { Newtonia.
	30	8 { Newtonia.



## OTHER STATES.

DATE.	INDEX NO.	ENGAGEMENT.	STATE.
1861			
July	27	1..Fort Fillimore,	N. M.
Aug.	3	1..Mesillo,	"
Oct.	4	1..Alimosa,	"
1862			
Feb.	21	1..Valverde,	"
Mar.	26-28	1..Apache Canon,	"
April	9	1..Owen's River,	Cal.
	15	2..Peralto,	N. M.
May	23	1..Fort Craig,	"
July	15	1..Apache Pass,	Ariz.
	28	2..Bayou Burrard,	I. T.
Aug.	7	1..Fort Fillimore,	N. M.
	18	2..Red Wood,	Minn.
	20	3..Fort Ridgeley,	"
	25	4..New Ulm,	"
Sep.	1	1..Fort Abercrombie,	Dak.
	2	2..Birch Collie,	Minn.
	3	3..Hutchinson,	"
	23	4..Yellow Medicine,	"
Oct.	21	1..Fort Cobb,	I. T.
1863			
Jan.	26	1..Bear River,	W. T.
	29	2..Pinos Altos,	Ariz.
Mar.	30	1..Tahliquah,	I. T.
April	15	1..Spanish Fork Canon,	Utah.
	16	2..Medalia,	Minn.
May	20	1..Forts Gibson and Blount,	I. T.
June	6	1..Shawneetown,	Kan.
	16	2..Jornado del Muerto,	N. M.
	20	3..Warm Springs,	"
	17	4..Orleans,	Ind.
	19	5..Blue Island,	"
July	1	1..Cabin Creek,	I. T.
	7	2..Grand Pass,	"
	9	3..Morgan's Raid,	Ind.
	9	3..Corydon,	"
	9	3..Salem,	"
	9	3..Dupont,	"
	12	3..Vermont,	"
	13	4..Morgan's Raid (Cont'd)Ohio.	"
	14	4..Harrison,	"
	14	4..Lawrenceburg,	"
	14	4..Paris,	"
	14	4..Vienna,	"
	19	4..Buffington Island,	"
	20	4..New Lisbon,	"
	7	5..Redwood Creek,	Cal.
	12	6..Vernon,	Ind.
	17	7..Honey Springs,	I. T.

## OTHER STATES—(Cont'd).

DATE.	INDEX NO.	ENGAGEMENT.	STATE.
1863			
July	18	8..Rio Hondo,	N. M.
	22	8..Concha's Springs,	"
	24	8..Big Mound,	Dak.
	26	8..Dead Buffalo Lake,	"
	26	9..Stony Lake,	"
	30	9..White House Hill,	"
Aug.	18	1..Pubelo Colorado,	N. M.
	26	2..Lawrence,	Kan.
Sept.	3	1..White Stone Hill,	Dak.
	9	2..Weber's Falls,	I. T.
	14	3..Seneca Station,	"
Oct.	25	1..Creek Agency,	"
Nov.	13	1..Trinity River,	Cal.
	17	2..River Creek,	"
Dec.	4	1..Niobrera,	Neb.
	19	4..Barren Fork,	I. T.
1864			
Jan.	4	1..Fort Summer,	N. M.
Mar.	25	1..Charlestown,	Ill.
April	7	1..Harney Lake Valley,	Ore.
	12	2..Freemont's Orchard,	Col.
	16	3..Scullyville,	I. T.
May	4	1..Apache Pass,	Ariz.
	3	2..Cedar Bluff,	Col.
	12	3..Smith's Station,	I. T.
	16	4..Smoky Hill,	Col.
May	18	5..Crooked River,	Ore.
	27	6..San Carlos River,	Cal.
July	28	1..Yoh-kah-o-kuty,	Dak.
Aug.	8	1..Two Hills,	"
	12	2..Little Blue,	"
	16	3..Smoky Hill Crossing,	Kan.
	8	4..Pueblo,	N. M.
	28	5..Fort Cotton Wood,	Nev.
Sep.	16	1..Fort Gibson,	I. T.
	19	2..Cabin Creek,	"
	18	3..Fort Cotton Wood,	Nev.
	27	4..Fort Rice,	Dak.
Oct.	20-25	1..Fort Leavenworth,	Kan.
	25	2..Milne Creek,	"
Nov.	25	1..Pawnee Forks,	"
	25	2..St. Vrain's Old Fort,	N. M.
	29	3..Big Sandy,	Col.
Dec.	9	1..Fort Lyons,	I. T.
1865			
Jan.	7	1..Julesburg,	"
Feb.	8	1..Mud Springs,	"
	9	2..Rush Creek,	"
Mar.	24	1..Rerock,	Ariz.
April	16	1..South Fork,	Ore.

1.

M.

z.

z.

