

Technical and Bibliographic Notes/Notes techniques et bibliographiques

The Institute has attempted to obtain the best original copy available for filming. Features of this copy which may be bibliographically unique, which may alter any of the images in the reproduction, or which may significantly change the usual method of filming, are checked below.

L'Institut a microfilmé le meilleur exemplaire qu'il lui a été possible de se procurer. Les détails de cet exemplaire qui sont peut-être uniques du point de vue bibliographique, qui peuvent modifier une image reproduite, ou qui peuvent exiger une modification dans la méthode normale de filmage sont indiqués ci-dessous.

- | | |
|---|---|
| <input checked="" type="checkbox"/> Coloured covers/
Couverture de couleur | <input type="checkbox"/> Coloured pages/
Pages de couleur |
| <input type="checkbox"/> Covers damaged/
Couverture endommagée | <input type="checkbox"/> Pages damaged/
Pages endommagées |
| <input type="checkbox"/> Covers restored and/or laminated/
Couverture restaurée et/ou pelliculée | <input type="checkbox"/> Pages restored and/or laminated/
Pages restaurées et/ou pelliculées |
| <input type="checkbox"/> Cover title missing/
Le titre de couverture manque | <input checked="" type="checkbox"/> Pages discoloured, stained or foxed/
Pages décolorées, tachetées ou piquées |
| <input type="checkbox"/> Coloured maps/
Cartes géographiques en couleur | <input type="checkbox"/> Pages detached/
Pages détachées |
| <input checked="" type="checkbox"/> Coloured ink (i.e. other than blue or black)/
Encre de couleur (i.e. autre que bleue ou noire) | <input checked="" type="checkbox"/> Showthrough/
Transparence |
| <input type="checkbox"/> Coloured plates and/or illustrations/
Planches et/ou illustrations en couleur | <input type="checkbox"/> Quality of print varies/
Qualité inégale de l'impression |
| <input type="checkbox"/> Bound with other material/
Relié avec d'autres documents | <input type="checkbox"/> Includes supplementary material/
Comprend du matériel supplémentaire |
| <input type="checkbox"/> Tight binding may cause shadows or distortion along interior margin/
La reliure serrée peut causer de l'ombre ou de la distorsion le long de la marge intérieure | <input type="checkbox"/> Only edition available/
Seule édition disponible |
| <input type="checkbox"/> Blank leaves added during restoration may appear within the text. Whenever possible, these have been omitted from filming/
Il se peut que certaines pages blanches ajoutées lors d'une restauration apparaissent dans le texte, mais, lorsque cela était possible, ces pages n'ont pas été filmées. | <input type="checkbox"/> Pages wholly or partially obscured by errata slips, tissues, etc., have been refilmed to ensure the best possible image/
Les pages totalement ou partiellement obscurcies par un feuillet d'errata, une pelure, etc., ont été filmées à nouveau de façon à obtenir la meilleure image possible. |
| <input type="checkbox"/> Additional comments:
Commentaires supplémentaires: | |

This item is filmed at the reduction ratio checked below/
Ce document est filmé au taux de réduction indiqué ci-dessous.

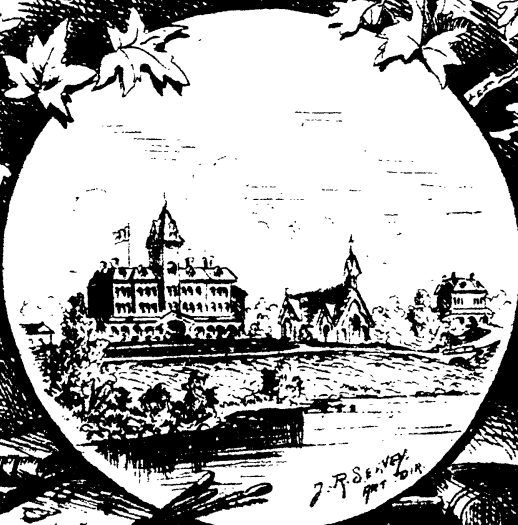
10X	12X	14X	16X	18X	20X	22X	24X	26X	28X	30X	32X
						/					

WELLMUTH LADIES

COLLEGE

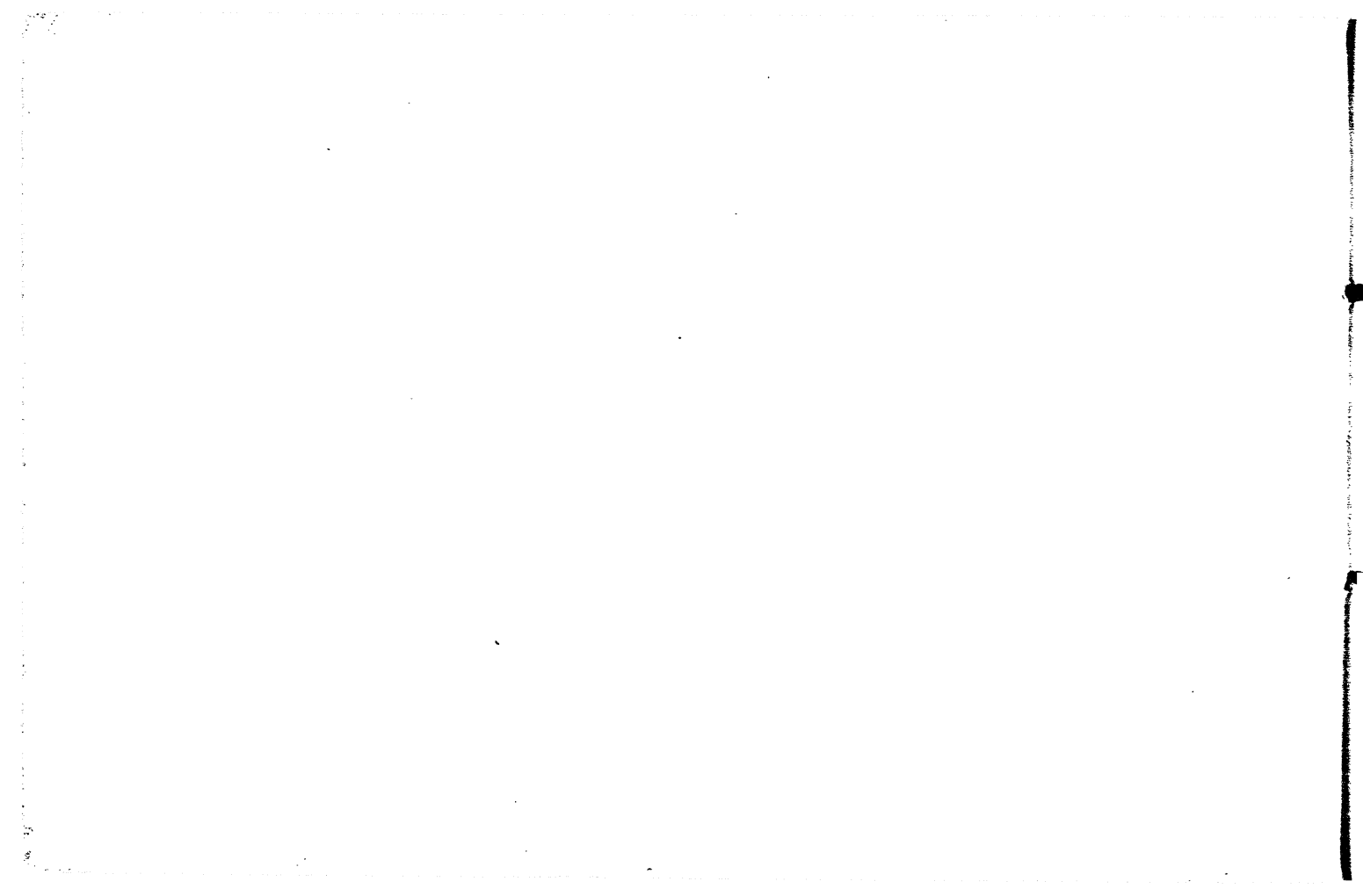
LONDON,
ONT.

CLOSING EXERCISES



J. R. SEVEY
1886

JUNE 14th 16th 18th 20th 21st 22nd & 23rd 1886.

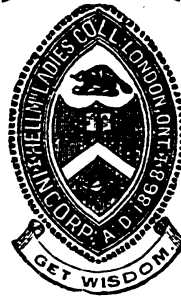


HELLMUTH

LADIES' COLLEGE

LONDON,

CANADA.



✽ INAUGURATED BY H. R. H. PRINCE ARTHUR, SEPT. 23, 1869 ✽

Lady Patroness :

H. R. H. PRINCESS LOUISE.

Founder :

THE RIGHT REV. BISHOP HELLMUTH, D.D., D.C.L.

President :

I. F. HELLMUTH, LL.B.

Vice-President :

REV. E. N. ENGLISH, M. A.

Visitors :

THE RIGHT REV. THE LORD BISHOP OF HURON.
THE RIGHT REV. THE LORD BISHOP OF TORONTO.
THE VERY REV. THE DEAN OF HURON.

PROFESSORIAL STAFF.

PRINCIPAL:

THE REV. E. N. ENGLISH, M.A.

VICE-PRINCIPAL:

MRS. E. N. ENGLISH.

LITERARY DEPARTMENT.

ENGLISH LITERATURE AND HISTORY:

I. F. HELLMUTH, LL.B.

CLASSICS AND MATHEMATICS:

THE REV. G. B. SAGE, B.A.

FRENCH AND ITALIAN:

THE REV. C. B. GUILLEMONT, B.A.

NATURAL SCIENCE:

THE REV. MINTER SEABORNE.

PHYSIOLOGY:

A. G. FENWICK, M.D., M.R.C.S.

ENGLISH SUBJECTS:

MISS K. JOHNSTON.

GERMAN:

R. TOEWS, B. A.

PREPARATORY ENGLISH SUBJECTS:

MISS BATES.

MUSICAL DEPARTMENT.

DIRECTOR:

THOMAS MARTIN, ESQ.

PIANO AND ORGAN:

WM. BARRON, ESQ.

PIANO:

MISS F. MACDONALD.

VOCAL MUSIC:

MRS. C. G. MOORE.

VIOLIN:

J. W. BAUMANN, ESQ.

ART DEPARTMENT.

DIRECTOR:

J. RUGGLES SEAVEY, ESQ.

ASSISTANT:

MISS H. E. BECKETT.

PHYSICAL CULTURE.

CALISTHENICS:

MISS H. E. BECKETT.

DANCING:

MR. G. B. DAYTON.

RIDING AND DRIVING:

MR. J. FULCHER.

WELLSBORO LADIES' COLLEGE



The Principal and Faculty request the pleasure of

Company at the Annual Closing Exercises
of the College.

H. L. C., June 4th, 1886.

THE :: CLOSING :: EXERCISES

WILL CONSIST OF

Literature.

RECITATIONS IN THE ENGLISH, FRENCH, ITALIAN, GERMAN AND LATIN LANGUAGES.
READING OF THE PRIZE ESSAY, ETC.

Music.

Piano—SOLOS, DUETS, CONCERTOS AND CHAMBER MUSIC.

Voice—SOLOS, DUETS, TRIOS AND CHORUSES.

Organ—SOLOS AND OBLIGATO ACCOMPANIMENTS.

The young ladies will be assisted in Chamber Music numbers and Orchestral Accompaniments to Concertos by the leading musicians of the city.

Art.

EXHIBITION OF WORK, NUMBERING ABOUT ONE THOUSAND PIECES (TWO-THIRDS OF WHICH ARE ORIGINAL), COMPRISING OILS AND WATER COLORS; PASTEL; CRAYON; ETCHINGS; DECORATIVE WORK, CHINA, ETC.; MODELLING; WOOD-CARVING; REPOUSÉ WORK, ETC., ETC.

Riding and Driving.

First Programme.

At Hellmuth Ladies' College, on Monday Evening, June 14th, 1886, at 7.30 o'clock.

(OMNIBUSES WILL LEAVE THE POST OFFICE AT SEVEN O'CLOCK.)

EXHIBITION OF ART WORK IN THE STUDIOS.

- GREAT SYMPHONY IN C MAJOR—(1st movement), for three pianos,
six performers.....*Schubert*
The Misses N. Gable (Minneapolis, Minn.); B. Chisholm (Guelph,
Ont.); M. Gray (Syracuse, N. Y.); P. Lye (Cobourg, Ont.);
M. L. Bacon (Iowa City, Iowa); and L. Hall
(Marquette, Mich.)
- SONG—"Three Wishes,".....*Pinsuti*
Miss B. Chisholm.
- GRAND CONCERTO, F-sharp Minor—(1st movement).....*Hiller*
Miss L. Baldwin (London, Ont.)
- ENGLISH RECITATION—"The Slave's Petition,".....*Mrs. Norton*
Miss A. Cattanaeh (Providence, R. I.)
- DUET for two Pianos—Rakoczi-March.....*Liszt*
The Misses L. Wardell (Macon, Mo.); M. Wolff (London); Mildred
Johnson (Cleveland, O.); E. Colson (Chicago, Ill.)
- VOCAL DUET—"Summer,".....*Gabussi*
The Misses M. and A. Cattanaeh.
- TRIO FOR PIANO, VIOLIN AND 'CELLO—(1st movement).....*Beethoven*
Miss A. Sage (London), and the Messrs. Saunders.
- CHORUS OF HOURIS—From "Paradise and the Peri,".....*Schumann*
St. Cæcilia Class.
- RONDO FOR TWO PIANOS—From the D Major Sonata.....*Mozart*
The Misses McIntosh (London), and E. Mathew (St. John, N. B.)
- FRENCH RECITATION—"Les Adieux de Marie Stuart,".....*Beranger*
Miss L. Baldwin.
- PIANO SOLOS—(a) Romance.....*Rubinstein*
(b) Gavotte.....*Reinecke*
Miss R. Herr (Chicago.)
- SONG—"Dedication,".....*Schumann*
Miss M. Gray.
- CONCERTO IN A MAJOR—(1st movement).....*Mozart*
Miss E. Herr (Lancaster, Penn.)
- ITALIAN RECITATION—Selection from Silvio Pellico.....*Silvio Pellico*
Miss I. English (London.)
- GRAND TRIO IN D MINOR—(1st movement), for Piano, Violin and
'Cello.....*Schumann*
Miss M. Gray and the Messrs. Saunders.

GOD SAVE THE QUEEN.

OMNIBUSES WILL LEAVE AT 9.30 O'CLOCK.

Second Programme.

At Hellmuth Ladies' College, on Wednesday Afternoon, June 16th, at 2.30 o'clock.

(OMNIBUSSES WILL LEAVE THE POST OFFICE AT TWO O'CLOCK)

- OVERTURE—"Heimkehr aus der Fremde,".....*Mendelssohn*
(Three pianos, six performers.)
- Misses R. Herr; E. Herr; B. Perkins (Rochester, N. Y.); C. Comstock (Alpena, Mich.); M. Smith (Brooklyn, N. Y.); and E. McCammon (Gananoque, Ont.)
- GERMAN RECITATION—"Gebet Während der Schlacht,".....*L. Krüner*
Miss L. Hall.
- CONCERTO, C Minor—for two Pianos, (1st movement).....*Bach*
Misses J. Snyder (Washington, D. C.), and L. Overaker (Cincinnati, O.)
- SOLO AND CHORUS—"Ave Maria,".....*Mendelssohn*
St. Cæcilia Class.
Solo—Miss Mabel Gray.
- PIANO SOLOS—(a) Berceuse.....*Henselt*
(b) Polish Dance.....*Scharwenka*
Miss I. English.
- ENGLISH RECITATION—"Lady Wentworth,".....*Longfellow*
Miss B. Towar (Hancock, Mich.)
- CONCERTO in G Major—(2nd and 3rd movements).....*Beethoven*
(Cadenza by Thomas Martin.)
Miss C. Weir (Cincinnati, O.)
- PART SONG—"Merry May,".....*A. Lee*
Misses M. Field (Jamaica); K. Forsythe (London); E. McCammon; A. Sage; J. Snyder; G. Brett (New York); and M. Cattanach (Providence, R. I.)
- CONCERTO in D Minor—(1st movement).....*Mendelssohn*
Miss B. Chisholm.
- ITALIAN RECITATION—"Il Conte di Camagnola,".....*Man. ni*
Miss M. Wadleigh (Clinton, Iowa.)
- VIOLIN SOLO—"Die Mühle,".....*Jensen*
Miss M. Lyles (Mobile, Ala.)
- VOCAL DUET—"Venetian Boat Song,".....*Blumenthal*
Misses M. Wadleigh and H. English (London.)
- PIANO SOLO—"Two Album Leaves,".....*Kirchner*
Miss W. Comstock (Alpena, Mich.)
- FRENCH RECITATION—"La Prière d' Esther,".....*Racine*
Miss K. Lord (Marquette, Mich.)
- DUET FOR TWO PIANOS—Suite Algerienne.....*Saint-Saens*
Reverie du Soir; Marche Militaire Francaise.
Misses N. Gable and R. Herr.

GOD SAVE THE QUEEN.

OMNIBUSSES WILL LEAVE AT 4.30 O'CLOCK.

Third Programme.

SACRED CONCERT IN ST. ANN'S CHAPEL,

(HELLMUTH LADIES' COLLEGE)

ON FRIDAY AFTERNOON, JUNE 18th, AT 3.00 O'CLOCK.

(OMNIBUSSES WILL LEAVE THE POST OFFICE AT 2.30 O'CLOCK.)

ORGAN SOLO—Fugue, with Pedal Obligato.....*Scarlatti-Westbrook*
Voluntary in D Minor.....*Edouard Batiste*
Miss May Hamilton, (Afton, Iowa.)

VOCAL SOLO—"Morning Prayer,"—"Eli,".....*Michael Costa*
Miss H. English, (London.)

ORGAN SOLO—"Gloria in Excelsis,"—"Twelfth Mass," with Pedal
Obligato.....*Mozart-Rimbault*
Miss P. Lye.

RECITATIVE AND AIR—with Chorus, "Jehovah's Temple," 42nd
Psalm.....*Mendelssohn*
Miss M. Wadleigh and St. Cæcilia Class.

ORGAN SOLO—Fugue in E Minor.....*Bach*
Andante in F Major.....*Lefebure-Wely*
Miss M. L. Bacon.

VOCAL SOLO—"Hark, My Soul,".....*Gounod*
Miss B. Chisholm.

ORGAN SOLO—Grand Concert March in E-flat.....*Lefebure-Wely*
Miss J. Snyder.

RECITATIVE AND ARIA—"I Will Sing,"—"St. Paul.".....*Mendelssohn*
Miss E. Seaborne, (London.)

ORGAN SOLO—"Cavatina," with Pedal Obligato.....*Raff-Whitney*
Miss N. Gable.

OMNIBUSSES WILL LEAVE AT 4.30 O'CLOCK.

St. Ann's Chapel,

H. L. C.

English Chaplains: { THE REV. E. N. ENGLISH, M. A.
THE REV. G. B. SAGE, B. A.

French Chaplain: THE REV. C. B. GUILLEMONT, B. A.

Choir Master: WM. BARRON, ESQ.

Organists: THE MISSES MARY L. BACON AND PAULINE LYE.

Choir:

SOPRANO:

MISS MABEL GRAY.

" BEATRICE CHISHOLM.

" MAUDE WADLEIGH.

" MARJORIE BACON.

" ANNA CATTANACH.

" IDA ENGLISH.

" MINNIE FIELD.

ALTO:

MISS MARY CATTANACH.

" JESSIE SNYDER.

" GEORGINE PLAISTED.

" HATTIE ENGLISH.

" MABLE HILL.

" MARY L. BACON.

Chapel Monitress: MISS NELLIE GABLE.

Choir Monitress: MISS MARJORIE BACON.

ST. ANN'S CHAPEL

(HELLMUTH LADIES' COLLEGE.)

SUNDAY, JUNE 20th—TRINITY SUNDAY.

Holy Communion,

8 A. M.

Morning Prayer,

11 A. M.

ORDER OF SERVICE:

HYMN, - - - - - 84.
VENITE, - - - - - *Ousley in E.*
PSALMS 102, 103, - - - - -
FIRST LESSON, - - - - - *Isaiah vi., to v. 11.*
TE DEUM, - - - - - *Tours in F.*
SECOND LESSON, - - - - - *Revelations i, to v. 9.*
JUBILATE—"Naaman," - - - - - *Tours in F.*
SOLO—"I dreamt I was in heaven," - *Sir Michael Costa.*

KYRIE, - - - - - *Tours in F.*
GLORIA TIBI AND GRATIAS, - *Tallis and Goss, in C.*
HYMN, - - - - - 491.

Sermon.

Preacher—THE REV. PROFESSOR CLARK, M. A.
(Trinity College, Toronto.)

Offertory.

VOLUNTARY—Mediation No. 1, - - *Alex. Guilmont.*
Benediction.

Sitang,

4 P. M.

Fourth Programme.

At Victoria Hall, on Monday Evening, June 21st, 1886, at 8.00 o'clock.

OVERTURE TO "EURYANTHE".....*Weber*
(Three pianos, six performers.)
The Misses N. Gable, L. Hall, P. Lye, M. Gray, R. Herr, and
B. Chisholm.

"LARGHETTO"—From the F Minor Concerto for Piano.....*Chopin*
Miss J. Axworthy.

SONG—"Ave Maria," (with Organ and Violin Obligato)*Bach-Gounod*
Miss L. Hall.

PIANO SOLOS—(a) "Evening,".....*Schumann*
(b) "Whims,".....*Schumann*
Miss M. Wadleigh.

FRENCH RECITATION—"Stances à un Père sur la mort de sa Fille" *Malherbe*
Miss B. Perkins.

GRAND CONCERTO in G Major, (1st movement).....*Beethoven*
(Cadenza by Carle Reinecke.)
Miss May Hamilton.

ARIA—"Al Dolce Guidami" (Anna Bolena).....*Donizetti*
Miss M. Wadleigh.

GRAND CONCERTSTÜCK in F Minor.....*Weber*
Miss K. Forsythe.

LATIN RECITATION—Æneid Bk. II., v.v. 485-505.....*Virgil*
Miss H. E. Chittenden (Collamer, Ohio.)

VOCAL DUET—"Giorno d'Orrore," (Semiramide).....*Rossini*
The Misses E. Seaborne and Duggan.

CHORUS—"Twilight,"*Abt*
St. Cæcilia Class.

PIANO SOLO—Impromptu, in F-sharp Major.....*Chopin*
Miss P. Lye.

SONG—"The Vision Beautiful," with Organ Obligato.....*Cotford Dick*
Miss B. Chisholm.

ENGLISH RECITATION—"High Tide on the Coast of Lincolnshire,"
.....*Jean Ingelow*
Miss M. E. Bacon (Iowa City, Iowa.)

SERENADE AND ALLEGRO GIOCO.....*Mendelssohn*
Miss M. L. Bacon.

VOCAL QUARTETTE—"A Mother's Song".....*J. L. Hatton*
The Misses L. Hall, M. Gray, Bates and Duggan.

GREAT CONCERTO in B flat Minor (1st movement)....*Xaver Scharwenka*
Miss M. McIntosh.

CARRIAGES AT 10 O'CLOCK.

GOD SAVE THE QUEEN.

Fifth Programme.

In Victoria Hall, on Tuesday Evening, June 22nd, 1886, at 8.00 o'clock.

KAISER MARCH—(For three pianos, six performers).....*Wagner*
The Misses N. Gable, M. Hamilton, L. Hall, M. Gray, P. Lye,
and J. Axworthy.
PIANO SOLO—Prelude in A Minor.....*J. S. Bach*
Miss N. Gable.
ENGLISH RECITATION—"The Death of King Connor Mac Nessa."
.....*Sullivan*
Miss F. Laing (London.)
VOCAL TRIO—"Perfida Clori,".....*Cherubini*
The Misses L. Hall, M. Wadleigh, and A. Cattanach.
GREAT EMPEROR CONCERTO—(1st movement).....*Beethoven*
Miss M. Gray.
GERMAN RECITATION—"Barbarossa,".....*Fr. Rückert*
Miss H. English.
SONG—"Give Me Thy Love,".....*Milton Wellings*
Miss Bates.
GRAND CONCERTSTUCK IN F MINOR.....*Weber*
Miss R. Herr.
VOCAL DUET—"Quis est Homo,"—(*Stabat Mater*).....*Rossini*
The Misses L. Hall and Bates.

ITALIAN RECITATION—"Rondinella Pellegrina,".....
Miss M. Cattanach.
SONG—"Non Torno,".....*Tito Mattei*
Miss M. Gray.
GREAT REVOLUTION CONCERTO.....*Rubinstein*
Miss P. Lye.

CANTATA FOR SOLO AND CHORUS,

"LITTLE RED RIDING HOOD,"

By *Franz Abt.*

Red Riding Hood.....Miss M. Gray
The Mother.....Miss B. Chisholm
Nightingale.....Miss L. Hall
The Wolf.....Miss Bates
The Rose.....Miss H. English
CHORUS—St. Cæcilia Class.

Director—MR. THOS. MARTIN. Accompanist—MR. WM. BARRON.

GOD SAVE THE QUEEN.

CARRIAGES AT 10 O'CLOCK.

COMMENCEMENT DAY

HELLMUTH LADIES' COLLEGE,

On Wednesday Afternoon, June 23rd, 1886,

AT 2.30 O'CLOCK.

OMNIBUSES WILL LEAVE THE POST OFFICE AT 2 O'CLOCK.

- CHORUS—"When Comes Sweet May,".....*Mendelssohn*
ST. CÆCILIA CLASS.
- LATIN RECITATION—Bk. I., Carmen III.....*Horace*
MISS C. COMSTOCK (Alpena, Mich.)
- GRAND CONCERTO IN A MINOR—(1st movement).....*Schumann*
MISS L. HALL.
- FRENCH RECITATION—"La Mort de Jeanne d'Arc,".....*Delavigne*
MISS M. JACKSON (Philadelphia, Penn.)
- VOCAL SOLO—"Io Ti Lascio,".....*Mozart*
MISS B. CHISHOLM.
Reading of the Prize Essay. "Is Life Worth Living?"
- PIANO SOLOS—(a) Chant Sans Paroles.....*Tschäikowsky*
(b) Mazurka.....*Chopin*
MISS MAY HAMILTON.

ITALIAN RECITATION—"La Mort d'Oreste,"..... *Alferi*

MISS F. LAING.

SONG—"The Lost Chord," (with Organ Obligato)..... *Sullivan*

MISS E. SEABORNE.

ENGLISH RECITATION—"The Execution of Montrose,"..... *Aytoun*

MISS C. MATTHEW (Brooklyn, N. Y.)

GRAND CONCERTO IN F MINOR—(2nd and 3rd movements)..... *Chopin*

MISS N. GABLE.

VALEDICTORY.

→ * DISTRIBUTION OF DIPLOMAS, MEDALS, SCHOLARSHIPS AND PRIZES * ←

Address by His Lordship the Bishop of Huron.

GOD SAVE THE QUEEN.

EXHIBITION OF ART WORK IN THE STUDIOS.

RIDING AND DRIVING.

St. Cæcilia Class

THOMAS MARTIN, ESQ., DIRECTOR.

1st Soprano.

MISS MABEL GRAY.
" MAUDE WADLEIGH.
" ANNA CATTANACH.
" IDA ENGLISH.
" EDITH McCAMMON.
" MARY JACKSON.
" FLORENCE LAING.
" PAULINE LYE.
" KATE FORSYTHE.
" MINNIE FIELD.
" BERENICE PERKINS.
" MAUDE SMITH.
" EMILY BURWELL.
" LAURA ELLIOTT.
" CLARA WEIR.
" ADA DANKS.

2nd Soprano.

MISS BEATRICE CHISHOLM.
" LOIS HALL.
" HATTIE ENGLISH.
" MARY E. BACON.
" GRACE FIRTH.
" JESSIE SNYDER.
" LIZZIE WARDELL.

Alto.

MISS MARY CATTANACH.
" GERTRUDE BRETT.
" MABLE HILL.
" BATES.

The Steinway, Grand, and Upright Pianafortes
used at these Exercises are kindly supplied by
A. & S. Nordheimer.

FREE PRESS PRINTING CO., LITHOGRAPHERS AND PRINTERS. LONDON, ONT.

