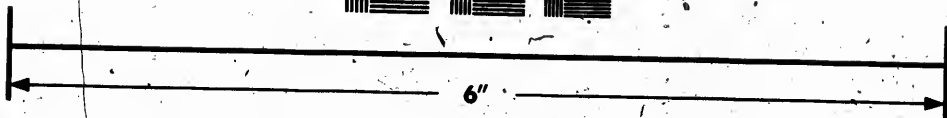
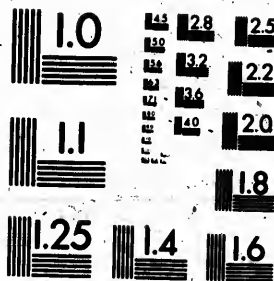


**IMAGE EVALUATION
TEST TARGET (MT-3)**



**Photographic
Sciences
Corporation**

23 WEST MAIN STREET
WEBSTER, N.Y. 14580
(716) 472-4503

125
2

**CIHM
Microfiche
Series
(Monographs)**

**ICMH
Collection de
microfiches
(monographies)**



Canadian Institute for Historical Microreproductions / Institut canadien de microreproductions historiques

© 1991

Technical and Bibliographic Notes / Notes techniques et bibliographiques

The Institute has attempted to obtain the best original copy available for filming. Features of this copy which may be bibliographically unique, which may alter any of the images in the reproduction, or which may significantly change the usual method of filming, are checked below.

L'Institut a microfilmé le meilleur exemplaire qu'il lui a été possible de se procurer. Les détails de cet exemplaire qui sont peut-être uniques du point de vue bibliographique, qui peuvent modifier une image reproduite, ou qui peuvent exiger une modification dans la méthode normale de filmage sont indiqués ci-dessous.

- Coloured covers/
Couverture de couleur
- Covers damaged/
Couverture endommagée
- Covers restored and/or laminated/
Couverture restaurée et/ou pelliculée
- Cover title missing/
Le titre de couverture manque
- Coloured maps/
Cartes géographiques en couleur
- Coloured ink (i.e. other than blue or black)/
Encre de couleur (i.e. autre que bleue ou noire)
- Coloured plates and/or illustrations/
Planches et/ou illustrations en couleur
- Bound with other material/
Relié avec d'autres documents
- Tight binding may cause shadows or distortion
along interior margin/
La reliure serrée peut causer de l'ombre ou de la
distorsion le long de la marge intérieure
- Blank leaves added during restoration may appear
within the text. Whenever possible, these have
been omitted from filming/
Il se peut que certaines pages blanches ajoutées
lors d'une restauration apparaissent dans le texte,
mais, lorsque cela était possible, ces pages n'ont
pas été filmées.

- Coloured pages/
Pages de couleur
- Pages damaged/
Pages endommagées
- Pages restored and/or laminated/
Pages restaurées et/ou pelliculées
- Pages discoloured, stained or foxed/
Pages décolorées, tachetées ou piquées
- Pages detached/
Pages détachées
- Showthrough/
Transparence
- Quality of print varies/
Qualité inégale de l'impression
- Continuous pagination/
Pagination continue
- Includes index(es)/
Comprend un (des) index
- Title on header taken from: /
Le titre de l'en-tête provient:
- Title page of issue/
Page de titre de la livraison
- Caption of issue/
Titre de départ de la livraison
- Masthead/
Générique (périodiques) de la livraison

Additional comments:
Commentaires supplémentaires:

There are some creases in the middle of the pages.

This item is filmed at the reduction ratio checked below/
Ce document est filmé au taux de réduction indiqué ci-dessous.

10X	14X	18X	22X	26X	30X
<input type="checkbox"/>	<input type="checkbox"/>	<input type="checkbox"/>	<input type="checkbox"/>	<input checked="" type="checkbox"/>	<input type="checkbox"/>
12X	16X	20X	24X	28X	32X

The copy filmed here has been reproduced thanks to the generosity of:

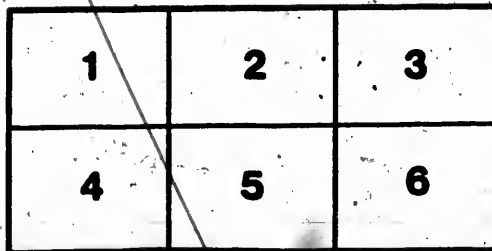
Manuscript Division,
National Archives of Canada

The images appearing here are the best quality possible considering the condition and legibility of the original copy and in keeping with the filming contract specifications.

Original copies in printed paper covers are filmed beginning with the front cover and ending on the last page with a printed or illustrated impression, or the back cover when appropriate. All other original copies are filmed beginning on the first page with a printed or illustrated impression, and ending on the last page with a printed or illustrated impression.

The last recorded frame on each microfiche shall contain the symbol \rightarrow (meaning "CONTINUED"), or the symbol ∇ (meaning "END"), whichever applies.

Maps, plates, charts, etc., may be filmed at different reduction ratios. Those too large to be entirely included in one exposure are filmed beginning in the upper left hand corner, left to right and top to bottom, as many frames as required. The following diagrams illustrate the method:



L'exemplaire filmé fut reproduit grâce à la générosité de:

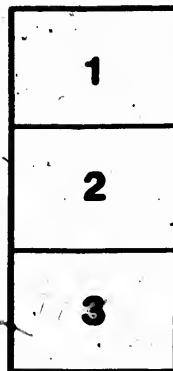
Division des manuscrits,
Archives nationales du Canada

Les images suivantes ont été reproduites avec le plus grand soin, compte tenu de la condition et de la netteté de l'exemplaire filmé, et en conformité avec les conditions du contrat de filmage.

Les exemplaires originaux dont la couverture en papier est imprimée sont filmés en commençant par le premier plat et en terminant soit par la dernière page qui comporte une empreinte d'impression ou d'illustration, soit par le second plat, selon le cas. Tous les autres exemplaires originaux sont filmés en commençant par la première page qui comporte une empreinte d'impression ou d'illustration et en terminant par la dernière page qui comporte une telle empreinte.

Un des symboles suivants apparaîtra sur la dernière image de chaque microfiche, selon le cas: le symbole \rightarrow signifie "A SUIVRE", le symbole ∇ signifie "FIN".

Les cartes, planches, tableaux, etc., peuvent être filmés à des taux de réduction différents. Lorsque le document est trop grand pour être reproduit en un seul cliché, il est filmé à partir de l'angle supérieur gauche, de gauche à droite, et de haut en bas, en prenant le nombre d'images nécessaire. Les diagrammes suivants illustrent la méthode:



Montreal, 1st August, 1921.

We beg leave to inform you we have commenced an Establishment in this City for the Curing and Packing of Provisions, in same manner as practised in Ireland, for exportation to the West Indies and other Markets, and also for home consumption, and will have ready for delivery at the Stores on Point à Calière, lately occupied by Messrs. Gerrard, Gillespie, Moffatt, & Co. by the latter end of October next, a small supply, and regularly afterwards an abundant one of the following Articles of Provisions, for any of which we shall be glad to receive your Orders:—

BEEF, in Barrels and Half Barrels which shall be cured from Prime Fat Cattle, and contain *neither* Necks or Shanks, the Barrels made of the best white Oak seasoned Staves, with an Iron Hoop on each end.

PORK, in Barrels and Half Barrels, which shall be cured from Prime Fat Hogs, and contain *no* portion of the Head except the Cheek, packed as above.

Agreeably to the Laws of this Province the above Provisions on exportation can *only* have the Inspector's Brand *Prime* on them, *although superior* to what would be entitled by Law to that Brand, because they will of course contain some pieces which the Law prohibits from being packed and Branded *Mess*; we shall however Brand every Package.

PRIME, MESS BEEF, { Or PORK, as the
CURED AND PACKED BY case may be.
SWEENEY'S, & Co.
MONTREAL.

And by which Brand its character in the Foreign Market shall be maintained without reference to *that* of the Inspection.

HAMS, cured in a very superior manner, which will give them a fine rich flavor and never be disagreeably Salt. These when dried and smoked, will be covered with bagging having the separate weight marked on each, and packed in Puncheons or otherwise, for exportation, as ordered.

HOG'S CHEEKS, cured and dried in same manner and each *pair* covered &c. &c. as above.

PRIME PIECES of BEEF, cured and dried &c. in same manner.

QUARTER BARRELS of BEEF, fifty pounds in each, to contain One Round, remainder Brisket and other choice pieces.

QUARTER BARRELS of PORK, fifty pounds in each, to contain Two Legs, remainder Rib and other choice pieces.

From the mode of curing the Beef and Pork to be packed in the Quarter Barrels it will keep for many months without acquiring any greater degree of saltiness than what is usually termed *Corged*, they are therefore particularly well adapted for the Foreign Market.

LARD, rendered and packed in Fitkins for exportation or home consumption.

PRIVATE FAMILIES, will be supplied with Hogs' Checks and dried Beef, equal, if not superior to any cured at home, and **RETAILERS** with the different descriptions of BEEF and PORK, without the expence of Barrels.—The **NECKS** and **SHANKS** of BEEF, and the **HEADS & FEET** of PORK, either Fresh or Salted, will be sold in any quantity, not less than Fourteen Pounds, &c.

We are

Your Obt. Humble Servants.

Sweeney & Co.

