

**CIHM  
Microfiche  
Series  
(Monographs)**

**ICMH  
Collection de  
microfiches  
(monographies)**



**Canadian Institute for Historical Microreproductions / Institut canadien de microreproductions historiques**

**© 1997**

## Technical and Bibliographic Notes / Notes techniques et bibliographiques

The Institute has attempted to obtain the best original copy available for filming. Features of this copy which may be bibliographically unique, which may alter any of the images in the reproduction, or which may significantly change the usual method of filming are checked below.

- ☒ Coloured covers / Couverture de couleur
- ☐ Covers damaged / Couverture endommagée
- ☐ Covers restored and/or laminated / Couverture restaurée et/ou pelliculée
- ☐ Cover title missing / Le titre de couverture manque
- ☐ Coloured maps / Cartes géographiques en couleur
- ☐ Coloured ink (i.e. other than blue or black) / Encre de couleur (i.e. autre que bleue ou noire)
- ☐ Coloured plates and/or illustrations / Planches et/ou illustrations en couleur
- ☐ Bound with other material / Relié avec d'autres documents
- ☐ Only edition available / Seule édition disponible
- ☐ Tight binding may cause shadows or distortion along interior margin / La reliure serrée peut causer de l'ombre ou de la distorsion le long de la marge intérieure.
- ☐ Blank leaves added during restorations may appear within the text. Whenever possible, these have been omitted from filming / Il se peut que certaines pages blanches ajoutées lors d'une restauration apparaissent dans le texte, mais, lorsque cela était possible, ces pages n'ont pas été filmées.
- ☐ Additional comments / Commentaires supplémentaires:

L'Institut a microfilmé le meilleur exemplaire qu'il lui a été possible de se procurer. Les détails de cet exemplaire qui sont peut-être uniques du point de vue bibliographique, qui peuvent modifier une image reproduite, ou qui peuvent exiger une modification dans la méthode normale de filmage sont indiqués ci-dessous.

- ☐ Coloured pages / Pages de couleur
- ☐ Pages damaged / Pages endommagées
- ☐ Pages restored and/or laminated / Pages restaurées et/ou pelliculées
- ☒ Pages discoloured, stained or foxed / Pages décolorées, tachetées ou piquées
- ☐ Pages detached / Pages détachées
- ☒ Showthrough / Transparence
- ☐ Quality of print varies / Qualité inégale de l'impression
- ☐ Includes supplementary material / Comprend du matériel supplémentaire
- ☐ Pages wholly or partially obscured by errata slips, tissues, etc., have been refilmed to ensure the best possible image / Les pages totalement ou partiellement obscurcies par un feuillet d'errata, une pelure, etc., ont été filmées à nouveau de façon à obtenir la meilleure image possible.
- ☐ Opposing pages with varying colouration or discolourations are filmed twice to ensure the best possible image / Les pages s'opposant ayant des colorations variables ou des décolorations sont filmées deux fois afin d'obtenir la meilleure image possible.

This item is filmed at the reduction ratio checked below /  
Ce document est filmé au taux de réduction indiqué ci-dessous.

10x	14x	18x	22x	26x	30x
<input type="checkbox"/>	<input type="checkbox"/>	<input type="checkbox"/>	<input checked="" type="checkbox"/>	<input type="checkbox"/>	<input type="checkbox"/>
12x	16x	20x	24x	28x	32x

The copy filmed here has been reproduced thanks to the generosity of:

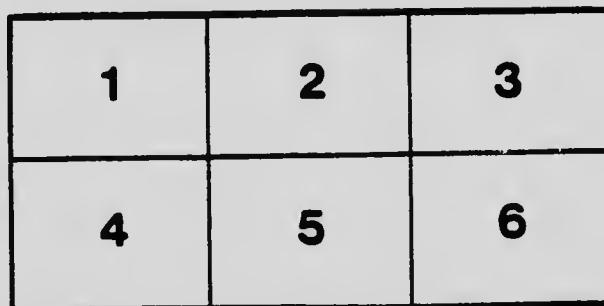
National Gallery of Canada,  
Library

The images appearing here are the best quality possible considering the condition and legibility of the original copy and in keeping with the filming contract specifications.

Original copies in printed paper covers are filmed beginning with the front cover and ending on the last page with a printed or illustrated impression, or the back cover when appropriate. All other original copies are filmed beginning on the first page with a printed or illustrated impression, and ending on the last page with a printed or illustrated impression.

The last recorded frame on each microfiche shall contain the symbol ➡ (meaning "CONTINUED"), or the symbol ▼ (meaning "END"), whichever applies.

Maps, plates, charts, etc., may be filmed at different reduction ratios. Those too large to be entirely included in one exposure are filmed beginning in the upper left hand corner, left to right and top to bottom, as many frames as required. The following diagrams illustrate the method:



L'exemplaire filmé fut reproduit grâce à la générosité de:

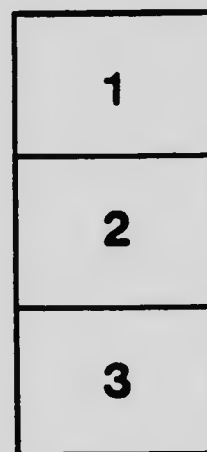
Musée des Beaux-Arts du Canada,  
Bibliothèque

Les images suivantes ont été reproduites avec le plus grand soin, compte tenu de la condition et de la netteté de l'exemplaire filmé, et en conformité avec les conditions du contrat de filmage.

Les exemplaires originaux dont la couverture en papier est imprimée sont filmés en commençant par le premier plat et en terminant soit par la dernière page qui comporte une empreinte d'impression ou d'illustration, soit par le second plat, selon le cas. Tous les autres exemplaires originaux sont filmés en commençant par la première page qui comporte une empreinte d'impression ou d'illustration et en terminant par la dernière page qui comporte une telle empreinte.

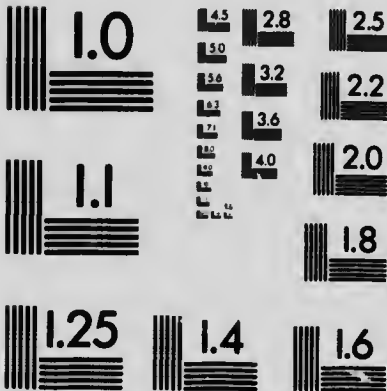
Un des symboles suivants apparaîtra sur la dernière image de chaque microfiche, selon le cas: le symbole ➡ signifie "A SUIVRE", le symbole ▼ signifie "FIN".

Les cartes, planches, tableaux, etc., peuvent être filmés à des taux de réduction différents. Lorsque le document est trop grand pour être reproduit en un seul cliché, il est filmé à partir de l'angle supérieur gauche, de gauche à droite, et de haut en bas, en prenant le nombre d'images nécessaire. Les diagrammes suivants illustrent la méthode.



# MICROCOPY RESOLUTION TEST CHART

(ANSI and ISO TEST CHART No. 2)



**APPLIED IMAGE Inc**

1653 East Main Street  
Rochester, New York 14609 USA  
(716) 482 - 0300 - Phone  
(716) 288 - 5989 - Fax

**CATALOGUE of THREE EXHIBITIONS**

**THE SOCIETY OF  
CANADIAN PAINTER-ETCHERS**

**J. E. H. MACDONALD, A.R.C.A.  
LAWREN HARRIS and  
FRANK H. JOHNSTON**

**and**

**WILLIAM CRUIKSHANK, R.C.A.**

**HAMILTON PUBLIC LIBRARY**

**THE ART MUSEUM OF TORONTO  
GRANGE PARK**

1st GALLERY

1st ANNUAL EXHIBITION  
*of*  
THE SOCIETY OF  
CANADIAN PAINTER-ETCHERS



HAMILTON PUBLIC LIBRARY

# FOREWORD



THE democratic world movement now in progress has not failed to make its impress on the vital issues of Art. It manifests itself perhaps most conspicuously in the astonishing advance and development of methods of pictorial reproduction. Hereto the unique quality of a work of Art has been significant and dealers still guard jealously the importance of this fact in furthering their sales.

Now the democratic tendencies demand more and more that Art shall be made for the people—and brought within the means of the greater number.

On this account artists of our time are giving serious attention to the various reproductive processes—Engraving, Lithography and Etching. All these processes, originally invented through the genuine need of the artist, have been more or less abused and mishandled by commercial uses and in turn neglected by the artist. The beauties and possibilities of these methods remain practically unknown to the public—and although it is a difficult task to reinstate them to the high position they deserve in the Arts, great strides have already been made both here and in Europe towards their firm re-establishment.

The men whose names are here appended, working in the various media of artistic reproduction, have formed an association called the Society of Canadian Painters-Etchers. It is the intention of this group of men, together with such new workers eventually elected to the Society, to continue and develop in Canada the great tradition of the artist-print in its many phases—the tradition born of such men as Dürer, Holbein, Rembrandt, the great Japanese, Hokusai, Hiroshige, etc.

It is the purpose of this Society to hold exhibitions of prints of contemporary Canadian artists (original Engravings, Lithographs, and Etchings) in all the large cities of Canada.

WM. J. THOMSON, Pres.      FRED S. HAINES, Sec.  
Thornhill, Ont.

NOV 15 1951

# CATALOGUE

## ALEXANDER, WILL W.

Toronto

- |  |         |
|--|---------|
| 1. Bridge at Twilight (Aquatint) .....     | \$20 00 |
| 2. In Gloucester Harbour (Etching) .....   | 10 00   |
| 3. A Fish Wharf, Gloucester (Etching) .... | 8 00    |
| 4. Schooner in Port (Etching) .....        | 8 00    |

## BEAUPRE, EUGENE

Toronto

- |                            |  |
|----------------------------|--|
| 5. Girl with Doll .....    |  |
| 6. A Musician .....        |  |
| 7. Waiting for Daddy ..... |  |
| 8. Billy .....             |  |
| 9. Morning .....           |  |
| 10. Susie .....            |  |

## COTTON, JOHN

Paris, France

- |   |       |
|---|-------|
| 11. Pueblo, Santa Clara, New Mexico (Dry Point) ..... | 12 00 |
| 12. Old Santa Fe (Etching) .....                      | 12 00 |
| 13. Interior de Beguinage, Bruges (Dry Point) .....   | 15 00 |
| 14. Eucalyptus (Etching) .....                        | 15 00 |
| 15. A Bruges Canal (Dry Point) .....                  | 15 00 |
| 16. Dundas Valley (Etching) .....                     | 25 00 |
| 17. Blossom Time (Color Etching) ....                 | 25 00 |
| 18. Firs, Epping Forest (Color Etching) . . .         | 25 00 |

## FAWCETT, GEORGE

Winnipeg, Man.

- |   |       |
|---|-------|
| 19. Pines and Rocks (Etching) .....         | 8 00  |
| 20. Rocks and Water Lillies (Etching) ...   | 8 00  |
| 21. The Old Mill, Belleview (Etching) . . . | 15 00 |
| 22. The Sun Inn (Etching) .....             | 15 00 |
| 23. The Monastery St. Norbet .....          | 10 00 |
| 24. Sand Lake, Ont. ....                    | 8 00  |

## FINCKEN, JAMES H.

Philadelphia

- |  |       |
|--|-------|
| 25. Observatory Hill, Phila. (Etching) ..... | 10 00 |
| 26. Old Bartram House (Etching) .....        | 6 00  |
| 27. Abandoned Spring House (Etching) .....   | 6 00  |
| 28. On the Weshawing Creek (Etching) ....    | 9 00  |
| 29. Delaware Landscape (Etching) .....       | 9 00  |



30.	Darby Creek (Soft Ground Etching) .....	\$ 9 00
31.	Old Farm Buildings (Soft Ground Etching) .....	9 00
32.	Tree Masses (Mezzotint) .....	10 00
33.	Near Morton, Evening (Mezzotint) .....	10 00

### **GALLAGHER, SEA. 'S**

**Boston, Mass.**

34.	St. Paul's Cathedral, Boston (Etching) ..	15 00
35.	The Village Censor (Etching) .....	15 00
36.	At Day-break (Etching) .....	15 00

### **GREENE, T. G.**

**Toronto**

37.	A Soldier of the Soil (Dry Point) .....	10 00
38.	At the Village Barber's (Dry Point) ....	10 00
39.	Loading Coal (Dry Point) .....	10 00
40.	Irish Setter (Dry Point) .....	15 00
41.	Young Sucker Fisher (Dry Point) .....	10 00
42.	The Reader (Dry Point) .....	10 00
43.	Pigs in Clover (Etching) .....	10 00
44.	The Apple (Dry Point) .....	5 00
45.	Plough Team (Dry Point) .....	10 00

### **HAINES, FRED S.**

**Thornhill, Ont.**

46.	Fly Time (Aquatint) .....	30 00
47.	Woodland (Aquatint) .....	25 00
48.	The Shepherdess (Color Aquatint) .....	20 00
49.	Winter (Color Aquatint) .....	18 00
50.	The Mill (Color Aquatint) .....	15 00
51.	The Lugger (Color Aquatint) .....	10 00
52.	Old Birches (Color Aquatint) .....	10 00
53.	Pastoral (Color Aquatint) .....	10 00
54.	Evening (Color Aquatint) .....	10 00
55.	Grazing (Aquatint) .....	10 00
56.	The Hill Top (Aquatint) .....	10 00
57.	The Lovers (Color Aquatint) .....	12 50
58.	Summer Day (Soft Ground).....	10 00
59.	Shepherd Girl (Aquatint) .....	12 50

### **JOPLING, F. W.**

**Toronto**

60.	Heating Billets (Dry Point) .....	30 00
61.	Queenston Heights (Dry Point) .....	25 00
62.	Under Brock's Shadow (Dry Point) .....	20 00
63.	Toronto Steamer—Lewiston (Dry Point) ..	20 00
64.	George Washington's Headquarters (Dry Point) .....	15 00

**KEAGEY, JAMES W.****Vancouver, B.C.**

65. Temple of Horus, Egypt ..... Not for sale  
 66. Where Good Fattening Is (Aquatint) .... \$ 8 00  
 67. Frogs (Aquatint) ..... 6 00

**LAUR, E. L.****Woodbridge, Ont.**

68. The Old Homestead (Aquatint) ..... 30 00  
 69. Winter in the Woods (Mezzotint) .... 15 00  
 70. Sunshine (Aquatint) ..... 30 00  
 71. Summer Idyll (Mezzotint) ..... 30 00

**MANLEY, C. M.****Toronto**

72. Old Thatch (Dry Point) ..... 20 00  
 73. The Laundry (Dry Point) ..... 15 00

**PHILLIPS, WALTER J.****Winnipeg, Man.**

74. Summer Morning (Etching) ..... 17 00  
 75. The Path of Gold (Wood Block Print) .. 12 00  
 76. White Wilderness (Wood Block Print)... 12 00  
 77. Margaret (Wood Block Print) ..... 6 00  
 78. The Lake Shore (Wood Block Print) .... 9 00  
 79. Still Water (Wood Block Print) ..... 12 00  
 80. The Island (Wood Block Print) ..... 12 00  
 81. Winter in Winnipeg (Wood Block Print) 6 00

**RAINE, HERBERT****Montreal**

82. "la Maison Pont neuf", St. Joachim, P.Q.  
 (Etching) ..... 25 00  
 83. A Far n Yard, St. Joachim, P.Q. (Etching) 25 00  
 84. From the Barn, St. Joachim, (Etching).. 20 00  
 85. Place Jacques Cartier, Montreal (Etching) 20 00  
 86. St. Vincent Street, Montreal (Etching) .. 20 00  
 87. Craig Street, Montreal (Etching) ..... 25 00

**REID, GEORGE A.****Toronto**

88. Decorative Panel (Etching) ..... 25 00

**STURGES, D. C.****Melrose, Mass, U.S.A.**

89. Money Lender (Etching) ..... 30 00  
 90. Cooper (Etching) ..... 25 00  
 91. Vendor of Greens (Etching) ..... 18 00  
 92. Old French 'Cellist (Etching) ..... 30 00  
 93. Which One? (Etching) ..... 20 00

94.	Splash (Etching) .....	\$ 15 00
95.	Old Lamp Cleaner (Etching) .....	20 00
96.	Cup of Tea (Etching) .....	18 00
97.	Knitting Lesson (Etching) .....	30 00
98.	Grubstaked (Lithograph) .....	15 00
99.	Cap'n Happy (Lithograph) .....	15 00
100.	An Argument (Lithograph) .....	15 00
101.	Fish Vendor (Lithograph) .....	15 00
102.	Built a Good Deal Like the Old Sally B. (Lithograph) .....	15 00

### **STEVENS, DOROTHY**

**Toronto**

103.	Reverie (Dry Point) .....	15 00
104.	Book Plate (Etching) .....	
105.	Portrait Study .....	

### **SUTHERLAND, FRED W.**

**Humber Bay**

106.	Indian Girl (Wood Engraving) .....	20 00
107.	Bridal Falls, Rocky Mts. (Wood Engraving) .....	20 00.

### **THOMSON, WM. J.**

**Toronto**

108.	The Canadiens, Lake Nipissing (Etching) .....	15 00
109.	Tow Path, Old Welland Canal (Etching) .....	12 00
110.	Entrance to Canal .....	12 00
111.	Lime Kilns, Milton .....	8 00
112.	The Edge of the City .....	5 00
113.	Don Valley .....	5 00
114.	Old Homestead, Weston .....	15 00
115.	Muggy Night .....	18 00
116.	Creek near Philadelphia .....	8 00
117.	Fishing Boats, Stevenson, B.C. ....	10 00
118.	Carlaw Ave., Toronto .....	Not for Sale

### **TURNER, STANLEY F.**

**Toronto**

119.	Intaglio .....	Not for Sale
120.	Intaglio .....	Not for Sale
121.	Intaglio .....	Not for Sale
122.	Intaglio .....	Not for Sale
123.	Peggy (Dry Point) .....	15 00

**STARK, W. R.**

**Toronto**

- 124. A Street, Le Cateau, France .....
- 125. The Café, Paris .....
- 126. A Belgian Homestead .....
- 127. A Study of a Spaniel .....
- 128. Mons .....
- 129. Ruins of Elverdinghe Cathedral .....
- 130. A Lane, Coperinghe .....



2nd GALLERY

ALGOMA SKETCHES *and*  
PICTURES

*by*

J. E. H. MACDONALD, A.R.C.A.  
LAWREN HARRIS *and*  
FRANK H. JOHNSTON

## **ALGOMA SKETCHES AND PICTURES**

**By J. E. H. MacDonald, A.R.C.A.; Lawren Harris,  
Frank H. Johnston**

**T**HE smaller works of this collection were made on a sketching trip along the line of the Algoma Central Railway, during the last three weeks of September, 1918.

As the country is quite unsettled, and has no boarding accommodation, the artists travelled and lived in an old freight car, fitted with a stove, bunks, etc. The car was left on different sidings where the country was especially picturesque and characteristic. Three stops were made, the first and most northerly at Canyon, 113 miles north of Sault Ste. Marie, then at Hubert, then at Batchewanna. The sketches are arranged approximately in the order of their production, and the advance of the Fall may be noted by comparing the sketches made at the different points. The weather was very wet at first, but some work was done, rain or shine.

The larger pictures shown were painted at home after the trip, some of them as efforts to reproduce, with deeper truth of feeling or character, a representative scene sketched and studied on the spot. Others were painted as imaginative summaries of impressions made by the country on the mind of the artist.

The whole collection may be taken as an evidence that Canadian artists generally are interested in the discovery of their own country. Too often their work is ridiculed by the ignorant, and criticized adversely by an unsympathetic narrowness of mind, as though it had no traceable connection with Nature.

### **J. E. H. MacDONALD, A.R.C.A.**

No's. 1 to 12, painted in the vicinity of Canyon.

No's. 13 to 25, painted in the vicinity of Hubert.

No's. 26 to 36, painted in the vicinity of Batchewanna.

No. 37. The Little Fall.

No. 38. The Wild River (Montreal Falls).

No's. 17 and 18 are views of Montreal River.

No's. 24 and 25—Great Falls, Montreal River.

No's. 28 and 29—Mitchell Lake.

The following sketches are for sale:

No's. 1, 2, 3, 5, 9, 10, 12, 14, 22, 23, 24, 28, 31, 33, 35.  
Price \$30.00.

No's. 4, 7, 8, 13, 15, 16, 17, 19, 20, 36. Price \$35.00.

### **LAWREN HARRIS**

97. Near Mitchell Lake.

98. Northern Evening.

99 to 114—Painted in the vicinity of Canyon.

115 to 125—Painted in the vicinity of Hubert.

126 to 138—Painted in the vicinity of Batchewanna.

139 to 144—Spring, 1918.

### **FRANK H. JOHNSTON**

No's. 40 to 63—Painted in the vicinity of Canyon.

No's. 64 to 82—Painted in the vicinity of Hubert.

No's. 83 to 96—Painted in the vicinity of Batchewanna.

Prices of No's. 40, 42, 44, 53, 54 ..... \$40 00

Prices of No's. 36, 43, 45, 46, 47, 55, 57, 58, 60.... 35 00

Prices of No's. 49, 50, 51, 52, 63, 69, 75, 84, 85, 86 20 00

Price of No. 59 ..... 25 00

Prices of No's. 41, 48, 64, 66, 70, 71, 72, 74, 76,

77, 79, 81, 94 ..... 75 00

Prices of No's. 67, 87, 89, 90, 92, 93, 95 ..... 100 00

Price of No. 91 ..... 150 00

Larger works painted as a result of impressions on the trip:

39. Bottom of the Canyon ..... \$250 00

61. Falls, Algoma ..... 200 00

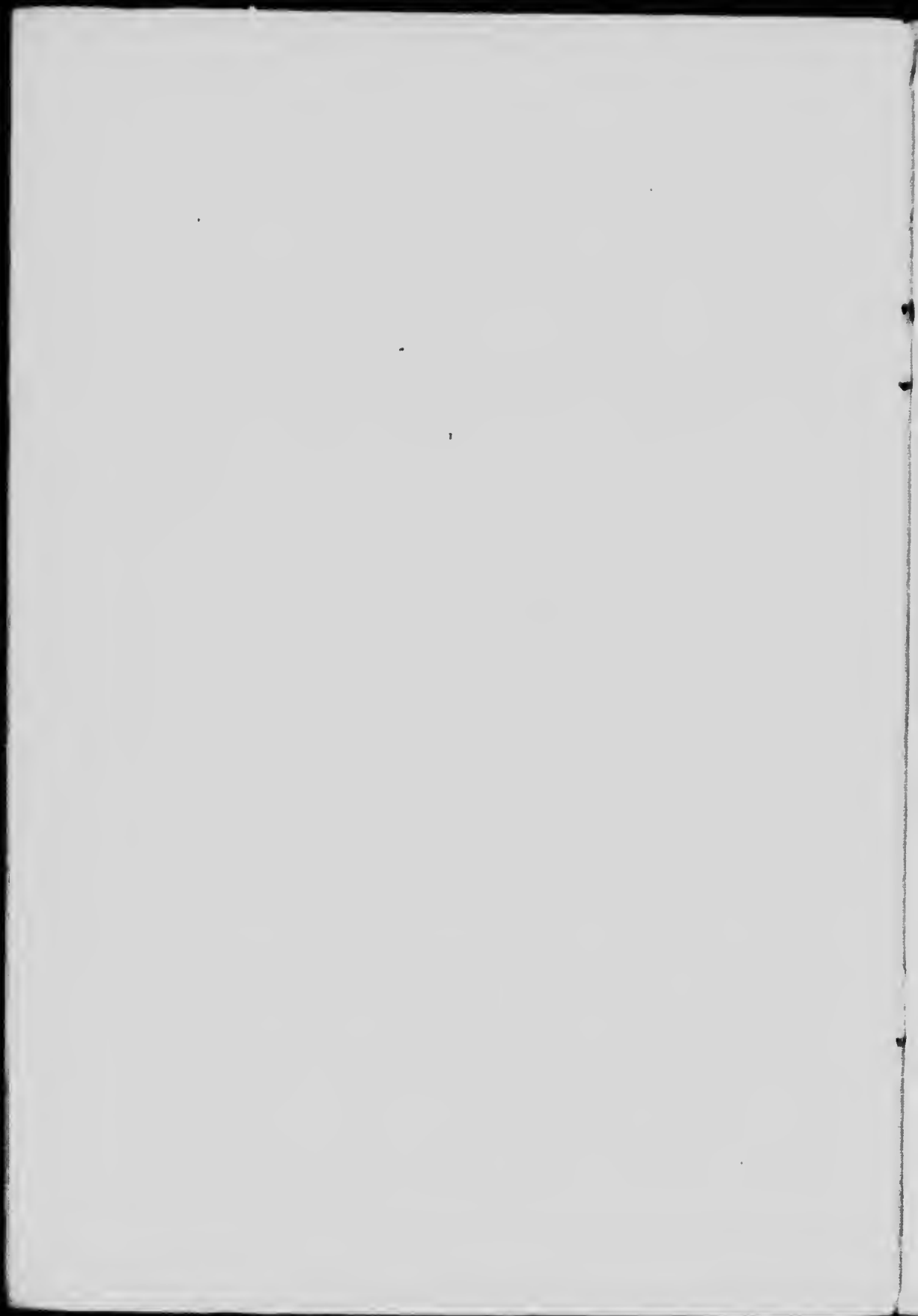
68. Sentinels, Algoma ..... 250 00

78. Last Gleam ..... 200 00

83. Top of the World ..... 250 00

96. Agawa Canyon ..... 300 00





3rd GAL. BY

WILLIAM CRUIKSHANK,  
R.C.A.

## WILLIAM CRUIKSHANK, R.C.A.

**M**R. CRUIKSHANK comes of a family of artists, and is a great-nephew of the famous caricaturist, George Cruikshank. He was born in Scotland at Broughty Ferry, near Dundee; studied at the Royal Scottish Academy in Edinburgh and the Royal Academy Schools in London, and the Beaux Arts in Paris.

Coming to America, he first settled in New York, where he is credited with having introduced pen drawing with broad line to the continent and having established a nucleus round which grew the Art Students' League.

He came to Canada in 1871, and identified himself with the Ontario Art School—now the Ontario College of Art—and has continued his connection with it to the present time.

His important works in painting represent Canadian subjects, such as "Breaking the Road" and "The Sand Pit"—both in the National Gallery at Ottawa; "Hauling the Mast" and "Plowing, Lower Canada"—both in the present exhibition. Another aspect of his work are his portraits, several of which are represented. A great number of his pen drawings have been presented by him to the Art Museum.

1. Plowing, Lower Canada. Medal, Pan-American Exposition
2. Hauling the Mast. Lent by Brig.-Gen. Sir Henry Pellatt, C.V.O.
3. Portrait—Late William Boulton. Lent by Mrs. W. M. Boulton
4. Portrait—Professor Hutton. Lent by the University of Toronto.
5. Portrait—Professor Mavor. Lent by Professor Mavor
6. Portrait—Mr. A. E. Boulton. Lent by Mr. A. E. Boulton.
7. Sketch—Late Sir Æmilius Irving
8. Dorothy
9. Pheasants. Lent by Mr. Newton Galbraith
- 10 to 17. Sketches. Lent by Mrs. W. M. Boulton
- 18 to 54. Sketches and Life Studies.

Some of these sketches are for sale. Enquire at desk.

