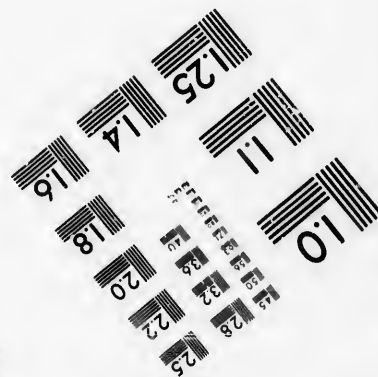
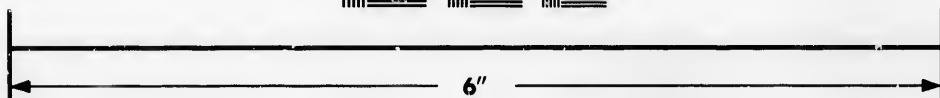
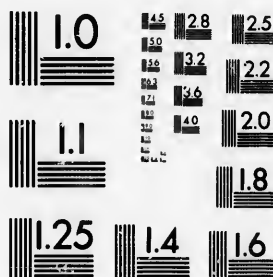


**IMAGE EVALUATION
TEST TARGET (MT-3)**



**Photographic
Sciences
Corporation**

23 WEST MAIN STREET
WEBSTER, N.Y. 14580
(716) 872-4503

45 28 25
32 22
20
11.8

**CIHM/ICMH
Microfiche
Series.**

**CIHM/ICMH
Collection de
microfiches.**



Canadian Institute for Historical Microreproductions / Institut canadien de microreproductions historiques

11
10
01

© 1986

Technical and Bibliographic Notes/Notes techniques et bibliographiques

The Institute has attempted to obtain the best original copy available for filming. Features of this copy which may be bibliographically unique, which may alter any of the images in the reproduction, or which may significantly change the usual method of filming, are checked below.

L'Institut a microfilmé le meilleur exemplaire qu'il lui a été possible de se procurer. Les détails de cet exemplaire qui sont peut-être uniques du point de vue bibliographique, qui peuvent modifier une image reproduite, ou qui peuvent exiger une modification dans la méthode normale de filmage sont indiqués ci-dessous.

- | | |
|--|--|
| <input type="checkbox"/> Coloured covers/
Couverture de couleur | <input type="checkbox"/> Coloured pages/
Pages de couleur |
| <input type="checkbox"/> Covers damaged/
Couverture endommagée | <input type="checkbox"/> Pages damaged/
Pages endommagées |
| <input type="checkbox"/> Covers restored and/or laminated/
Couverture restaurée et/ou pelliculée | <input type="checkbox"/> Pages restored and/or laminated/
Pages restaurées et/ou pelliculées |
| <input type="checkbox"/> Cover title missing/
Le titre de couverture manque | <input checked="" type="checkbox"/> Pages discoloured, stained or foxed/
Pages décolorées, tachetées ou piquées |
| <input type="checkbox"/> Coloured maps/
Cartes géographiques en couleur | <input type="checkbox"/> Pages detached/
Pages détachées |
| <input type="checkbox"/> Coloured ink (i.e. other than blue or black)/
Encre de couleur (i.e. autre que bleue ou noire) | <input checked="" type="checkbox"/> Showthrough/
Transparence |
| <input type="checkbox"/> Coloured plates and/or illustrations/
Planches et/ou illustrations en couleur | <input type="checkbox"/> Quality of print varies/
Qualité inégale de l'impression |
| <input type="checkbox"/> Bound with other material/
Relié avec d'autres documents | <input type="checkbox"/> Includes supplementary material/
Comprend du matériel supplémentaire |
| <input type="checkbox"/> Tight binding may cause shadows or distortion
along interior margin/
Lorsque la reliure serrée peut causer de l'ombre ou de la
distorsion le long de la marge intérieure | <input type="checkbox"/> Only edition available/
Seule édition disponible |
| <input type="checkbox"/> Blank leaves added during restoration may
appear within the text. Whenever possible, these
have been omitted from filming/
Il se peut que certaines pages blanches ajoutées
lors d'une restauration apparaissent dans le texte,
mais, lorsque cela était possible, ces pages n'ont
pas été filmées. | <input type="checkbox"/> Pages wholly or partially obscured by errata
slips, tissues, etc., have been refilmed to
ensure the best possible image/
Les pages totalement ou partiellement
obscurcies par un feuillet d'errata, une pelure,
etc., ont été filmées à nouveau de façon à
obtenir la meilleure image possible. |
| <input checked="" type="checkbox"/> Additional comments:/ [Printed ephemera] 1 sheet (verso blank)
Commentaires supplémentaires: | |

This item is filmed at the reduction ratio checked below/
Ce document est filmé au taux de réduction indiqué ci-dessous.

10X	14X	18X	22X	26X	30X
<input type="checkbox"/>	<input type="checkbox"/>	<input type="checkbox"/>	<input type="checkbox"/>	<input checked="" type="checkbox"/>	<input type="checkbox"/>
12X	16X	20X	24X	28X	32X

The copy filmed here has been reproduced thanks to the generosity of:

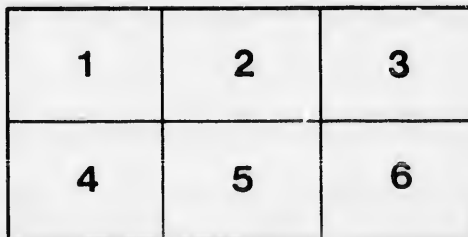
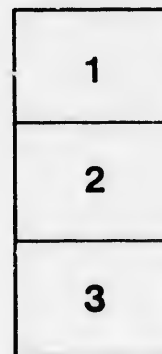
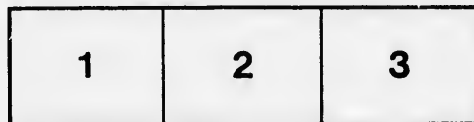
Seminary of Quebec
Library

The images appearing here are the best quality possible considering the condition and legibility of the original copy and in keeping with the filming contract specifications.

Original copies in printed paper covers are filmed beginning with the front cover and ending on the last page with a printed or illustrated impression, or the back cover when appropriate. All other original copies are filmed beginning on the first page with a printed or illustrated impression, and ending on the last page with a printed or illustrated impression.

The last recorded frame on each microfiche shall contain the symbol \rightarrow (meaning "CONTINUED"), or the symbol ∇ (meaning "END"), whichever applies.

Maps, plates, charts, etc., may be filmed at different reduction ratios. Those too large to be entirely included in one exposure are filmed beginning in the upper left hand corner, left to right and top to bottom, as many frames as required. The following diagrams illustrate the method:



L'exemplaire filmé fut reproduit grâce à la générosité de:

Séminaire de Québec
Bibliothèque

Les images suivantes ont été reproduites avec le plus grand soin, compte tenu de la condition et de la netteté de l'exemplaire filmé, et en conformité avec les conditions du contrat de filmage.

Les exemplaires originaux dont la couverture en papier est imprimée sont filmés en commençant par le premier plat et en terminant soit par la dernière page qui comporte une empreinte d'impression ou d'illustration, soit par le second plat, selon le cas. Tous les autres exemplaires originaux sont filmés en commençant par la première page qui comporte une empreinte d'impression ou d'illustration et en terminant par la dernière page qui comporte une telle empreinte.

Un des symboles suivants apparaîtra sur la dernière image de chaque microfiche, selon le cas: le symbole \rightarrow signifie "A SUIVRE", le symbole ∇ signifie "FIN".

Les cartes, planches, tableaux, etc., peuvent être filmés à des taux de réduction différents. Lorsque le document est trop grand pour être reproduit en un seul cliché, il est filmé à partir de l'angle supérieur gauche, de gauche à droite, et de haut en bas, en prenant le nombre d'images nécessaire. Les diagrammes suivants illustrent la méthode.

2 August 1843

PASTORAL ADDRESS

Remigius Gaulin, by the Grace of God and the authority of the Holy Apostolic See, Bishop of Kingston, &c., &c.

To our Venerable Brethern the Clergy, and to our Beloved Children in Christ the Laity of our Diocese, Health and Benediction in the Lord.

It is with the greatest joy and satisfaction that we make known to you, that on the twentieth of this month, the solemnity of the Festival of the glorious Assumption of the B. V. Mary, the Right Revd. Patrick Phelan received Episcopal Consecration in the City of Montreal under the title of Bishop of Carthage *in partibus infidelium*, and that he has likewise been appointed our Coadjutor, with the right of succession, by His Holiness Gregory, the Sixteenth of the name, by Letters Apostolic bearing date the twentieth day of February of the present year. We invite you, in consequence, Dearly Beloved Brethren, to offer up sincere thanks to Almighty God for this new mark of His kindness and mercy towards the faithful of the Diocese of Kingston. The Prelate, whom the Holy See has thus been graciously pleased to promote to the Episcopal Dignity, and appoint as our Coadjutor, is already well known by his untiring zeal, his prudence, and all those virtues and qualifications, which should always be found in the first pastors of the Church of J. C. We inform you at the same time, that considering the weak state of our health, and the many grievous infirmities with which it has pleased God to visit us, we have determined with the advice of our Episcopal Brethren to confide to the hands of our Coadjutor the entire Administration of the Diocese of Kingston, with full authority to exercise without limitation all the powers of the Ordinary. We also hereby communicate to the Right Revd. Prelate all the faculties which we have received from the Holy See, being fully authorized to that effect, reserving to ourselves the title of our See and the ordinary jurisdiction which we cannot divest ourselves of, without the express consent of the Roman Pontiff. In thus confiding the charge of our Diocese to this worthy Prelate, we have consulted your interest, your spiritual advancement, and the advantage of the Church. You will, therefore, for the future apply to him on all occasions where heretofore you applied to us, and according to the tenor of the Apostolical letters above mentioned, you will pay the same respect, obedience, and submission to his Ordinances, pastoral letters, regulations, &c. as to our own, for to his care do we hereby intrust the future Government and administration of our Diocese. It is our express intention that you render to our Coadjutor the same honors, and give him the same marks of distinction as if we were ourselves personally present. Nothing but the love and affection which we bear you, and the interests of religion could have induced us to adopt this important step. But We feel that we can no longer bear the weight of the burden that has been imposed upon us, and the responsibility attached to the office of a Bishop in the Church of God. We shall never cease to offer up our most fervent prayers to the throne of mercy in your behalf; for our heart is filled with the warmest affection for you; and we shall always feel the deepest interest, and solicitude for your spiritual and temporal happiness. May the spirit of peace, of union, of charity dwell among you,—May you enjoy every blessing, and edify all men by the practice of these heavenly virtues which characterize the true disciples of J. C.

The present pastoral address shall be read from the pulpit, or the Altar during Divine Service on the first Sunday after its reception, in all the Churches, Chapels and Stations of each mission.

Give at Montreal under our hand and seal, and the countersign of our Secretary, the twenty second day of August, one thousand eight hundred and forty-three.



RUS. EPUS REGIUS

By His Lordship's command.

(A true Copy)

PATRICK DOLLARD, Priest
Secretary.

Patrick Dollard

The Right Revd. P. F. Turgeon

Bishop of Sydney.

