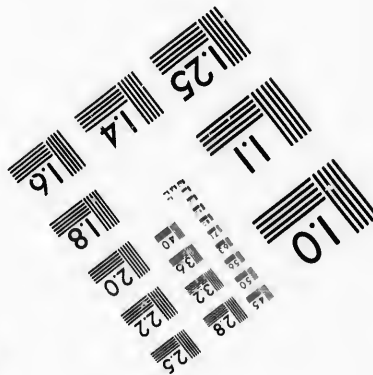
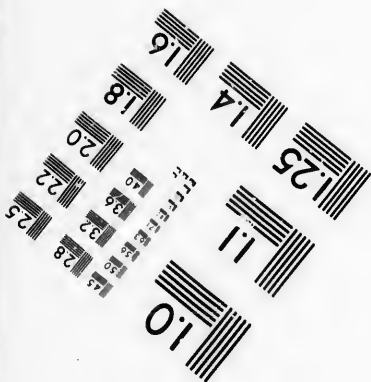
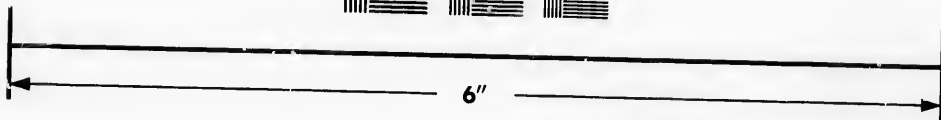
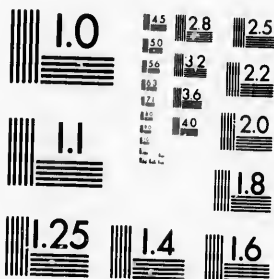


**IMAGE EVALUATION  
TEST TARGET (MT-3)**



**Photographic  
Sciences  
Corporation**

23 WEST MAIN STREET  
WEBSTER, N.Y. 14580  
(716) 872-4503

0  
15  
28  
32  
36  
40  
45  
50  
55  
60  
65  
70  
75  
80  
85  
90  
95  
100

**CIHM/ICMH  
Microfiche  
Series.**

**CIHM/ICMH  
Collection de  
microfiches.**



Canadian Institute for Historical Microreproductions / Institut canadien de microreproductions historiques

10  
11  
12  
13  
14  
15  
16  
17  
18  
19  
20  
21  
22  
23  
24  
25  
26  
27  
28  
29  
30  
31  
32  
33  
34  
35  
36  
37  
38  
39  
40  
41  
42  
43  
44  
45  
46  
47  
48  
49  
50  
51  
52  
53  
54  
55  
56  
57  
58  
59  
60  
61  
62  
63  
64  
65  
66  
67  
68  
69  
70  
71  
72  
73  
74  
75  
76  
77  
78  
79  
80  
81  
82  
83  
84  
85  
86  
87  
88  
89  
90  
91  
92  
93  
94  
95  
96  
97  
98  
99  
100

**© 1986**

Technical and Bibliographic Notes/Notes techniques et bibliographiques

The Institute has attempted to obtain the best original copy available for filming. Features of this copy which may be bibliographically unique, which may alter any of the images in the reproduction, or which may significantly change the usual method of filming, are checked below.

L'Institut a microfilmé le meilleur exemplaire qu'il lui a été possible de se procurer. Les détails de cet exemplaire qui sont peut-être uniques du point de vue bibliographique, qui peuvent modifier une image reproduite, ou qui peuvent exiger une modification dans la méthode normale de filmage sont indiqués ci-dessous.

- |  |  |
|--|--|
| <input type="checkbox"/> Coloured covers/<br>Couverture de couleur   | <input type="checkbox"/> Coloured pages/<br>Pages de couleur   |
| <input type="checkbox"/> Covers damaged/<br>Couverture endommagée  | <input type="checkbox"/> Pages damaged/<br>Pages endommagées   |
| <input type="checkbox"/> Covers restored and/or laminated/<br>Couverture restaurée et/ou pelliculée  | <input type="checkbox"/> Pages restored and/or laminated/<br>Pages restaurées et/ou pelliculées  |
| <input type="checkbox"/> Cover title missing/<br>Le titre de couverture manque   | <input type="checkbox"/> Pages discoloured, stained or foxed/<br>Pages décolorées, tachetées ou piquées  |
| <input type="checkbox"/> Coloured maps/<br>Cartes géographiques en couleur   | <input type="checkbox"/> Pages detached/<br>Pages détachées  |
| <input type="checkbox"/> Coloured ink (i.e. other than blue or black)/<br>Encre de couleur (i.e. autre que bleue ou noire)   | <input checked="" type="checkbox"/> Showthrough/<br>Transparence   |
| <input type="checkbox"/> Coloured plates and/or illustrations/<br>Planches et/ou illustrations en couleur  | <input type="checkbox"/> Quality of print varies/<br>Qualité inégale de l'impression   |
| <input type="checkbox"/> Bound with other material/<br>Relié avec d'autres documents   | <input type="checkbox"/> Includes supplementary material/<br>Comprend du matériel supplémentaire   |
| <input type="checkbox"/> Tight binding may cause shadows or distortion<br>along interior margin/<br>La reliure serrée peut causer de l'ombre ou de la<br>distorsion le long de la marge intérieure   | <input type="checkbox"/> Only edition available/<br>Seule édition disponible   |
| <input type="checkbox"/> Blank leaves added during restoration may<br>appear within the text. Whenever possible, these<br>have been omitted from filming/<br>Il se peut que certaines pages blanches ajoutées<br>lors d'une restauration apparaissent dans le texte,<br>mais, lorsque cela était possible, ces pages n'ont<br>pas été filmées. | <input type="checkbox"/> Pages wholly or partially obscured by errata<br>slips, tissues, etc., have been refilmed to<br>ensure the best possible image/<br>Les pages totalement ou partiellement<br>obscurcies par un feuillet d'errata, une pelure,<br>etc., ont été filmées à nouveau de façon à<br>obtenir la meilleure image possible. |
| <input checked="" type="checkbox"/> Additional comments: /<br>Commentaires supplémentaires:  | [Printed ephemera] 1 sheet (verso blank)   |

This item is filmed at the reduction ratio checked below/  
Ce document est filmé au taux de réduction indiqué ci-dessous.

10X	12X	14X	16X	18X	20X	22X	24X	26X	28X	30X	32X
								✓			

The copy filmed here has been reproduced thanks to the generosity of:

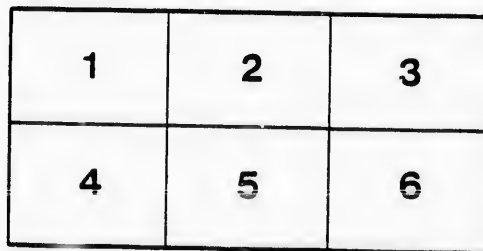
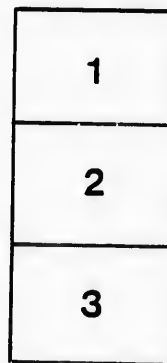
Manuscript Division  
Public Archives of Canada

The images appearing here are the best quality possible considering the condition and legibility of the original copy and in keeping with the filming contract specifications.

Original copies in printed paper covers are filmed beginning with the front cover and ending on the last page with a printed or illustrated impression, or the back cover when appropriate. All other original copies are filmed beginning on the first page with a printed or illustrated impression, and ending on the last page with a printed or illustrated impression.

The last recorded frame on each microfiche shall contain the symbol  $\rightarrow$  (meaning "CONTINUED"), or the symbol  $\nabla$  (meaning "END"), whichever applies.

Maps, plates, charts, etc., may be filmed at different reduction ratios. Those too large to be entirely included in one exposure are filmed beginning in the upper left hand corner, left to right and top to bottom, as many frames as required. The following diagrams illustrate the method:



L'exemplaire filmé fut reproduit grâce à la générosité de:

Division des manuscrits  
Archives publiques du Canada

Les images suivantes ont été reproduites avec le plus grand soin, compte tenu de la condition et de la netteté de l'exemplaire filmé, et en conformité avec les conditions du contrat de filmage.

Les exemplaires originaux dont la couverture en papier est imprimée sont filmés en commençant par le premier plat et en terminant soit par la dernière page qui comporte une empreinte d'impression ou d'illustration, soit par le second plat, selon le cas. Tous les autres exemplaires originaux sont filmés en commençant par la première page qui comporte une empreinte d'impression ou d'illustration et en terminant par la dernière page qui comporte une telle empreinte.

Un des symboles suivants apparaîtra sur la dernière image de chaque microfiche, selon le cas: le symbole  $\rightarrow$  signifie "A SUIVRE", le symbole  $\nabla$  signifie "FIN".

Les cartes, planches, tableaux, etc., peuvent être filmés à des taux de réduction différents. Lorsque le document est trop grand pour être reproduit en un seul cliché, il est filmé à partir de l'angle supérieur gauche, de gauche à droite, et de haut en bas, en prenant le nombre d'images nécessaire. Les diagrammes suivants illustrent la méthode.

re  
détails  
es du  
modifier  
r une  
ilmage

s

rrata  
to

pelure,  
n à

32X



# “Glorious Old Norfolk!”

## REQUISITION.

To John Rolph, Esquire.

SIR:—

The undersigned, your old constituents, and friends of Civil and Religious Liberty, in the County of Norfolk; in view of the peculiar state of parties in the Province—the very important questions of public policy now agitating the public mind—your long tried and faithful adherence to those great principles of Reform and Progress, held in common by the party to which we are proud to belong; most cordially and respectfully, yet earnestly ask you again to lend your invaluable services to the country of your early adoption, and to stand as a Candidate for the Representation of this County at the approaching General Election—pledging ourselves, should you comply with our request, to use our best exertions by our votes and influence, to ensure your triumphant return to Parliament.

(Signed,) I. W. FOWELL,  
and 693 others.

TO THE FREE AND INDEPENDENT  
**ELECTORS**  
OF THE  
**COUNTY OF NORFOLK.**

GENTLEMEN:—

I cheerfully accept from you the high invitation to serve our common country in the Provincial Parliament; and I thank you for the generous manner in which that invitation is conveyed.

The magnitude of the trust you so confidently repose, the proud position long sustained by “Glorious Old Norfolk,” and the high and honorable expectations of its enlightened Electors, cannot fail to make me engage in your service, at this juncture of affairs, with diffidence and concern.

Twice in former times, by me never to be forgotten, MIDDLESEX invited me in comprehensive terms, to serve UPPER CANADA. A similar

commission, breathing the same high views, now comes to me a second time from your welcome hands, veteran Electors of Norfolk! But it has a wider range; for it comprehends Canada, United Canada, Upper and Lower Canada;—the just interests and expectations of both which, I shall ever alike conscientiously regard.

You ask from me no pledges—but, be assured, this confidence, justified in your view by our past intercourse, will only demand from me the greater solicitude to retain and deserve it.

While I shall duly regard the Prerogatives of the Crown, as Prerogatives for the benefit of the People, and shall constitutionally preserve the most amicable relations to the Mother Country; you will find me unchanged in my opinion, and unabated in my zeal, in the pursuit of every measure conducive to equal, civil and religious rights among you—to the revision and simplification of the existing system of Law and Equity—to the equalization of the Representation—to an honest, just and economical administration of your public affairs—and to an ample and unimpaired enjoyment of your present Constitutional liberty.

The subjects most engrossing your attention, are the religious questions; especially from their magnitude the Clergy Reserves. There is in the hand of every Reformer of Norfolk, I am told, the republication of my views, recorded in former Parliamentary debates, upon these questions. Such are my present views; which seem to receive your sanction now as warmly as when, proudly clothed with the Representative character from your hands, I formerly express-

ed them, as I hope to do again, in your name and behalf in your House of Parliament. It may be right to remark that subsequent legislation on the Clergy Reserves, has surrounded the question with fresh difficulties, which have now to be met and adjusted in the attainment of a satisfactory result.

Respecting sectarian grants and schools, I shall be anxious to favor any plan which will terminate all religious dissension on the subject: provided it be alike liberal, just, and considerate towards the religious feelings and educational interests of both Catholics and Protestants. Of the possibility of satisfactorily framing the practical details of such a plan, I individually entertain no doubt. Under the guidance of those principles, which characterized our former political relations, I desire to legislate upon the subject in the same spirit with which Protestants would be satisfied if Catholics had a numerical and legislative superiority.

Such is an outline of some of the leading matters, which it would be my duty and inclination to support in Parliament and recommend to the favorable consideration of the Crown. But every government must have its character stamped upon it at the hustings; and official assurances or exertion given individually or collectively in public life, are unavailing, unless the people in the conscientious exercise of the elective franchise, elect to the popular branch of the Legislature, sincere and trustworthy representatives, who will faithfully aid in carrying out the policy desired in a wise, prudent, and constitutional manner.

JOHN ROLPH.

Since, Nov. 19th, 1851.

