

**CIHM  
Microfiche  
Series  
(Monographs)**

**ICMH  
Collection de  
microfiches  
(monographies)**



**Canadian Institute for Historical Microreproductions / Institut canadien de microreproductions historiques**

**© 1997**

## Technical and Bibliographic Notes / Notes techniques et bibliographiques

The Institute has attempted to obtain the best original copy available for filming. Features of this copy which may be bibliographically unique, which may alter any of the images in the reproduction, or which may significantly change the usual method of filming are checked below.

- Coloured covers / Couverture de couleur
- Covers damaged / Couverture endommagée
- Covers restored and/or laminated / Couverture restaurée et/ou pelliculée
- Cover title missing / Le titre de couverture manque
- Coloured maps / Cartes géographiques en couleur
- Coloured ink (i.e. other than blue or black) / Encre de couleur (i.e. autre que bleue ou noire)
- Coloured plates and/or illustrations / Planches et/ou illustrations en couleur
- Bound with other material / Relié avec d'autres documents
- Only edition available / Seule édition disponible
- Tight binding may cause shadows or distortion along interior margin / La reliure serrée peut causer de l'ombre ou de la distorsion le long de la marge intérieure.
- Blank leaves added during restorations may appear within the text. Whenever possible, these have been omitted from filming / Il se peut que certaines pages blanches ajoutées lors d'une restauration apparaissent dans le texte, mais, lorsque cela était possible, ces pages n'ont pas été filmées.
- Additional comments / Commentaires supplémentaires:

L'Institut a microfilmé le meilleur exemplaire qu'il lui a été possible de se procurer. Les détails de cet exemplaire qui sont peut-être uniques du point de vue bibliographique, qui peuvent modifier une image reproduite, ou qui peuvent exiger une modification dans la méthode normale de filmage sont indiqués ci-dessous.

- Coloured pages / Pages de couleur
- Pages damaged / Pages endommagées
- Pages restored and/or laminated / Pages restaurées et/ou pelliculées
- Pages discoloured, stained or foxed / Pages décolorées, tachetées ou piquées
- Pages detached / Pages détachées
- Showthrough / Transparence
- Quality of print varies / Qualité inégale de l'impression
- Includes supplementary material / Comprend du matériel supplémentaire
- Pages wholly or partially obscured by errata slips, tissues, etc., have been refilmed to ensure the best possible image / Les pages totalement ou partiellement obscurcies par un feuillet d'errata, une pelure, etc., ont été filmées à nouveau de façon à obtenir la meilleure image possible.
- Opposing pages with varying colouration or discolorations are filmed twice to ensure the best possible image / Les pages s'opposant ayant des colorations variables ou des décolorations sont filmées deux fois afin d'obtenir la meilleure image possible.

This item is filmed at the reduction ratio checked below /  
Ce document est filmé au taux de réduction indiqué ci-dessous.

<b>10x</b>		<b>14x</b>		<b>18x</b>		<b>22x</b>		<b>26x</b>		<b>30x</b>	
	<b>12x</b>		<b>16x</b>		<b>20x</b>		<b>24x</b>		<b>28x</b>		<b>32x</b>

The copy filmed here has been reproduced thanks to the generosity of:

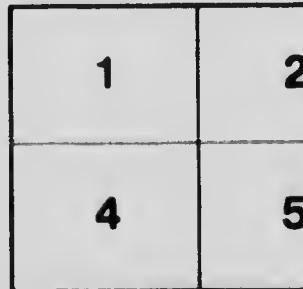
Vancouver Public Library

The images appearing here are the best quality possible considering the condition and legibility of the original copy and in keeping with the filming contract specifications.

Original copies in printed paper covers are filmed beginning with the front cover and ending on the last page with a printed or illustrated impression, or the back cover when appropriate. All other original copies are filmed beginning on the first page with a printed or illustrated impression, and ending on the last page with a printed or illustrated impression.

The last recorded frame on each microfiche shall contain the symbol → (meaning "CONTINUED"), or the symbol ▼ (meaning "END"), whichever applies.

Maps, plates, charts, etc., may be filmed at different reduction ratios. Those too large to be entirely included in one exposure are filmed beginning in the upper left hand corner, left to right and top to bottom, as many frames as required. The following diagrams illustrate the method:



L'exemplaire filmé fut reproduit grâce à la générosité de:

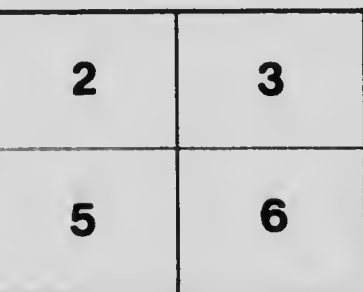
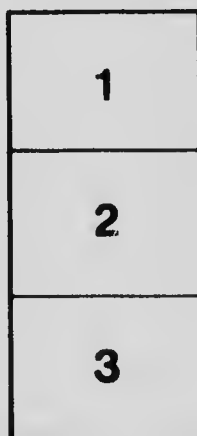
Vancouver Public Library

Les images suivantes ont été reproduites avec le plus grand soin, compte tenu de la condition et de la netteté de l'exemplaire filmé, et en conformité avec les conditions du contrat de filmage.

Les exemplaires originaux dont la couverture en papier est imprimée sont filmés en commençant par le premier plat et en terminant soit par la dernière page qui comporte une empreinte d'impression ou d'illustration, soit par le second plat, selon le cas. Tous les autres exemplaires originaux sont filmés en commençant par la première page qui comporte une empreinte d'impression ou d'illustration et en terminant par la dernière page qui comporte une telle empreinte.

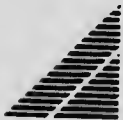
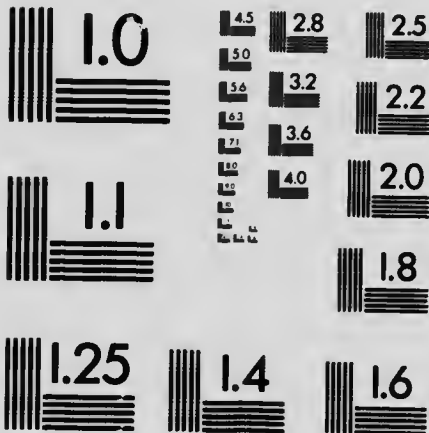
Un des symboles suivants apparaîtra sur la dernière image de chaque microfiche, selon le cas: le symbole  $\rightarrow$  signifie "A SUIVRE", le symbole  $\nabla$  signifie "FIN".

Les cartes, planches, tableaux, etc., peuvent être filmés à des taux de réduction différents. Lorsque le document est trop grand pour être reproduit en un seul cliché, il est filmé à partir de l'angle supérieur gauche, de gauche à droite, et de haut en bas, en prenant le nombre d'images nécessaire. Les diagrammes suivants illustrent la méthode.



# MICROCOPY RESOLUTION TEST CHART

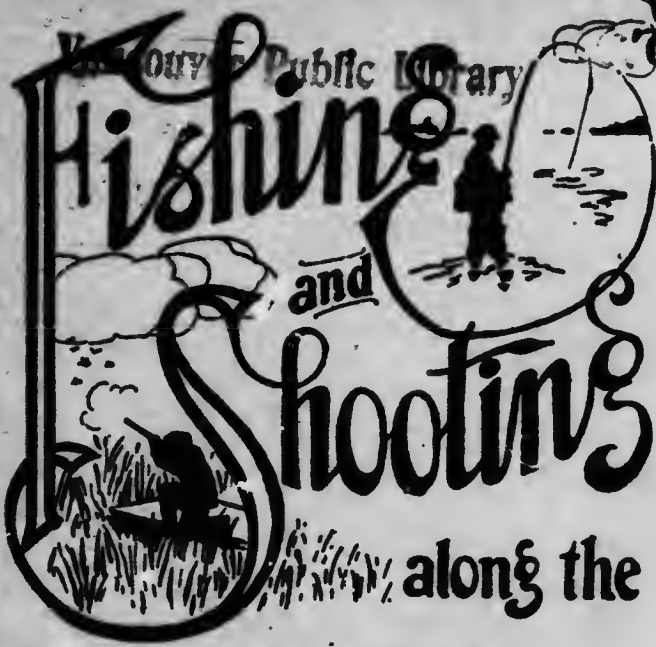
(ANSI and ISO TEST CHART No. 2)



**APPLIED IMAGE Inc**

1653 East Main Street  
Rochester, New York 14609 USA  
(716) 482 - 0300 - Phone  
(716) 288 - 5989 - Fax

PUBLICITY BUREAU



nw  
799  
B86  
P.

*B.C. Electric*

*Where to go  
How to get there  
What to do when  
you get to it*

For the latest reports,  
and information, fares  
and schedules, inquire at  
Information Bureau,  
Carrall Street Station  
Telephone Sey. 5000

BRITISH COLUMBIA ELECTRIC  
RAILWAY COMPANY  
VANCOUVER, B. C.

author

Fishing - B.C.  
B.C.E. - Routes

## FISHING ON B. C. ELECTRIC LINES

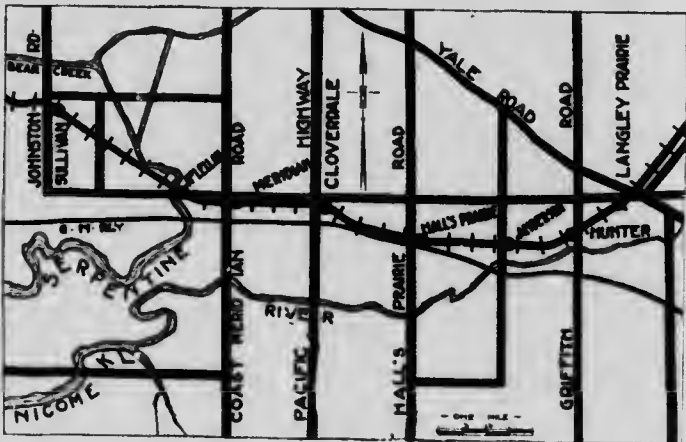
### Fraser Valley Line

Few cities can claim such fishing streams as lie near Vancouver within an hour and half's ride from the centre of the city. By boarding an interurban train at 6:30 o'clock in the morning in Vancouver, you can be fishing by 8 o'clock.

Such conditions, together with the low fares prevailing on the B. C. Electric, make fishing available for everyone.

A dozen streams are reached by the Fraser Valley line, from those close to the city to those in the Vedder Mountains. In the limits of this folder we are able to mention only the most outstanding features of these fishing streams.

**Serpentine River.**—Leave the train at McLellan, where the stream flows under the railway bridge. Although the river here is slow and muddy looking it does not seem to have any effect on the fish, as Cut-throat, Sea-trout, Salmon Trout, and Cohoe can be caught. The best baits are a small spoon with gut, and a fly or worm bait. Fly fishing is very good. Best results are obtained on the east side of the stream.



**Nicomekl River.**—A splendid fishing stream. Use the same baits as on the Serpentine River—flies or small fly spoons. Leave the train at Meridian or Cloverdale, where there is good hotel accommodation. Walk down to the mill from Cloverdale. Fishing is good, up or down.

**Salmon River.**—Great care must be taken to keep one's shadow off the water here. The B. C. Electric line crosses the river at Jardine, where a

## FISHING ON B. C. ELECTRIC LINES

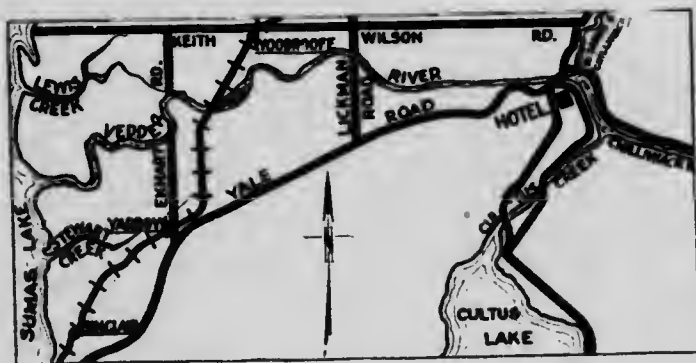
start can be made. Up to Fort Langley the water is tidal and sluggish, but from Harmsworth up it becomes swift. It is a good stream in which to fish when the Nicomekl or Serpentine are too high. In the tidal section, fishing is good all winter. Indianna, Tacoma, or similar spinners are good bait. Hotel accommodation may be obtained at Fort Langley.

**Bear or Johnston's Creek.**—Not far from Sullivan Station. Get off there and walk north along Johnson Road. Fish up or down. Any small size standard fly gets the results. Cut-throat, and Sea-trout are plentiful. Late fall and spring are the best seasons.

**Beaver Creek.**—Jackman Station is the nearest point. Walk toward the Fraser River along Jackman Road. Work toward the Fraser.

### *Vedder River and Cultus Lake*

**Vedder River.**—One of the best fishing streams in all British Columbia. Leave the interurban train at Yarrow, Keith-Wilson Road or Sardis. Steelhead, Dolly Varden, Rainbow and Cut-throat bite well from July to November and again during the spring months.



The Vedder surroundings are delightful. Whether you fish or not you will find an outing there very pleasant. Tramps may be made up or down the river, up to Cultus Lake and into the mountains. At Vedder Crossing there is Vedder Crossing Inn, with accommodation for a limited number of guests. To reach the hotel take train to Sardis station, two and a half miles away. Stage may be arranged for. Another plan is to go to Chilliwack, two miles farther and drive over by auto stage, to fish. Stages may be ordered to Sardis Station in advance. Ask the ticket agent.



## FISHING ON B. C. ELECTRIC LINES

**Cultus Creek.**—About a mile and three-quarters from Vedder Crossing, on the road to Cultus Lake. It may be reached by leaving the train at Keith-Wilson Road, following the road east to Yale Road, then south. Sea trout, Cut-throat, and Dolly Varden may be caught with a small fly spoon, or a spoon with worm. When water is high, waders will be required.

**Cultus Lake.**—This lake, which is about seven and a half miles long and a mile and a half wide, is a delightful place to camp, whether you fish or not. Good sport may be had by trolling as well as fishing at the mouths of the several small creeks running into the lake. There is good bathing and a boat may be hired at a reasonable rate. There is a store at Vedder Crossing.

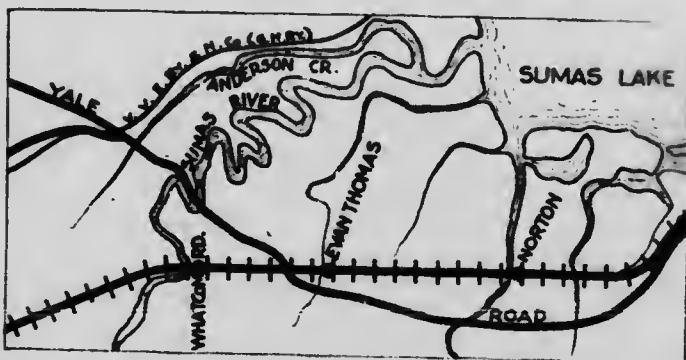
### *Sumas Creek and Tributaries*

**Sumas Creek.**—Get off at Whatcom Road Station. A great variety of fish may be found in this stream, including Cut-throat, Dolly Varden, Sea Trout, Cohoe and Steelhead (in the spring). A small spoon and worm bait, or fly spoon, are good, although the stream is fair for flies in September and October.

**Marshall Creek.**—If they aren't biting well on the Sumas try this one. It is a short distance from the Sumas along the prairie, and is good in the fall and early spring.

**Anderson Creek.**—Also reached from Whatcom Road Station. This stream and Sumas Creek join to flow into Sumas Lake. Use a small spoon with gut and worm bait, or fly spoon.

Near Abbotsford are sloughs where splendid fishing may be had in the fall and early spring.



## North Shore Streams

**Lynn Creek.**—Trout are very numerous, but are inclined to be small, averaging rather close to eight inches, the size limit. Use a No. 10 hook, or worm. Take Lynn Valley car.

**Seymour Creek.**—The haunt of Steelhead, Spring Salmon, Cohoes, Sea trout, Cut-throat, and occasionally Dolly Varden. In the spring big Steelheads are caught in the upper reaches. Devon, Minnow and Shrimp spoons should be taken along in the kit, as all are good at different times. Take Lynn Valley car.

**Capilano River.**—Take Capilano car to end of the line, and walk to the wooden bridge. There are one or two good pools above the bridge and plenty of fish are above the canyon. Steelhead, and a few Dolly Varden, and Sea-trout will take spoons or Dev. flies and minnows. In September and October many fishermen have good luck fishing for Cohoes with a Siwash spoon.

**Burwell or Stoney Creek.**—About nine miles above the intake on Seymour Creek. Fishing good after the end of July. Use standard trout flies or worms.

## Game Shooting

According to reports of scouts and game wardens who have been thoroughly over the field, this year will be one of the best yet for game birds and deer.

Along the Fraser Valley, ducks are showing up in large flocks, many of the lakes holding promise of taking on the appearance of a hunter's paradise.

Sumas Lake, Cultus Lake, and many smaller lakes in the Fraser Valley offer a strong inducement for a week-end among the game birds with a shotgun.

Take the B. C. Electric train from Granville Bridge Station to Steveston, where splendid duck shooting may be found in the mouth of the Fraser River.

From Cloverdale and Surrey, north and south of the B. C. Electric Fraser Valley line, will be found some of the best pheasant shooting on the mainland.

Pheasant and Duck shooting on Pitt River is well worth the trip. Take B. C. Electric train and leave at Fraser Mills.

McMillan Island and Sea Island in the mouth of the Fraser Valley are good for pheasant shooting. Lulu Island is also good. Take cars leaving Granville Bridge Station for Steveston.

Game is the incentive for an out-of-town hunter may be found in the Fraser Valley along the Fraser River—leave car at Sardis.

## Open Seasons

Open seasons for shooting game in the district served by B. C. Electric lines on the mainland are as follows (dates inclusive).

**Bear.**—Open season, September 1, 1920, to June 30, 1921.

**Deer.**—September 18 to December 15.

**Ducks.**—(Except Wood and Eider Duck)—October 16 to January 31. Daily bag limit ~~10~~<sup>20</sup>; total ~~50~~<sup>150</sup>.

**Grouse.**—(Blue grouse only)—September 18 to October 23. Daily bag limit, 6 grouse of any one species and not more than 12 grouse of all species, and a total bag limit of 50.

**Pheasants.**—(Except Golden and Silver)—Cock birds only. October 16 to November 22. Daily bag limit 6; total 25.

No shooting permitted in that portion of Point Grey lying north of Marine Drive between the eastern boundary of the municipality and the mouth of the Fraser River.

**European Partridge.**—November 15 to November 22. Daily bag limit 6; total 25.

No shooting is permitted in Burnaby within the following boundaries: Commencing at the junction of Sperling Avenue and the right-of-way of the B. C. Electric due north to the line of the Great Northern Railway; following the railway line east to Cariboo Road and south along this road to the B. C. Electric right-of-way; then west to the point of commencement. Oakalla Prison Farm and Central Park are also included in the prohibited area.



## *General Information*

The B. C. Electric Information Bureau, Carrall Street station, is at your service for reports on fishing and shooting, train schedules, information on fares, etc. You are invited to make use of it on all occasions for information as to local transportation. Phone Seymour 5000.

In New Westminster enquiries may be made at the ticket office. Phone 61.

**Carrall Street Station.**—Carrall and Hastings Streets, any city car.

**Granville Bridge Station.**—Granville bridge; reached by Fairview, Fourth Avenue, and Fraser Avenue cars going south on Granville, and Broadway West cars going south on Richards Street.

### *Train Service*

**Fraser Valley Line.**—Trains leave Carrall Street station, Vancouver. Three trains daily to Chilliwack; additional trains to Jardine. For particulars see timetables.

**Lulu Island Line.**—Trains leave Granville Bridge station. Hourly service to Steveston; two-hourly to New Westminster, via Marpole.

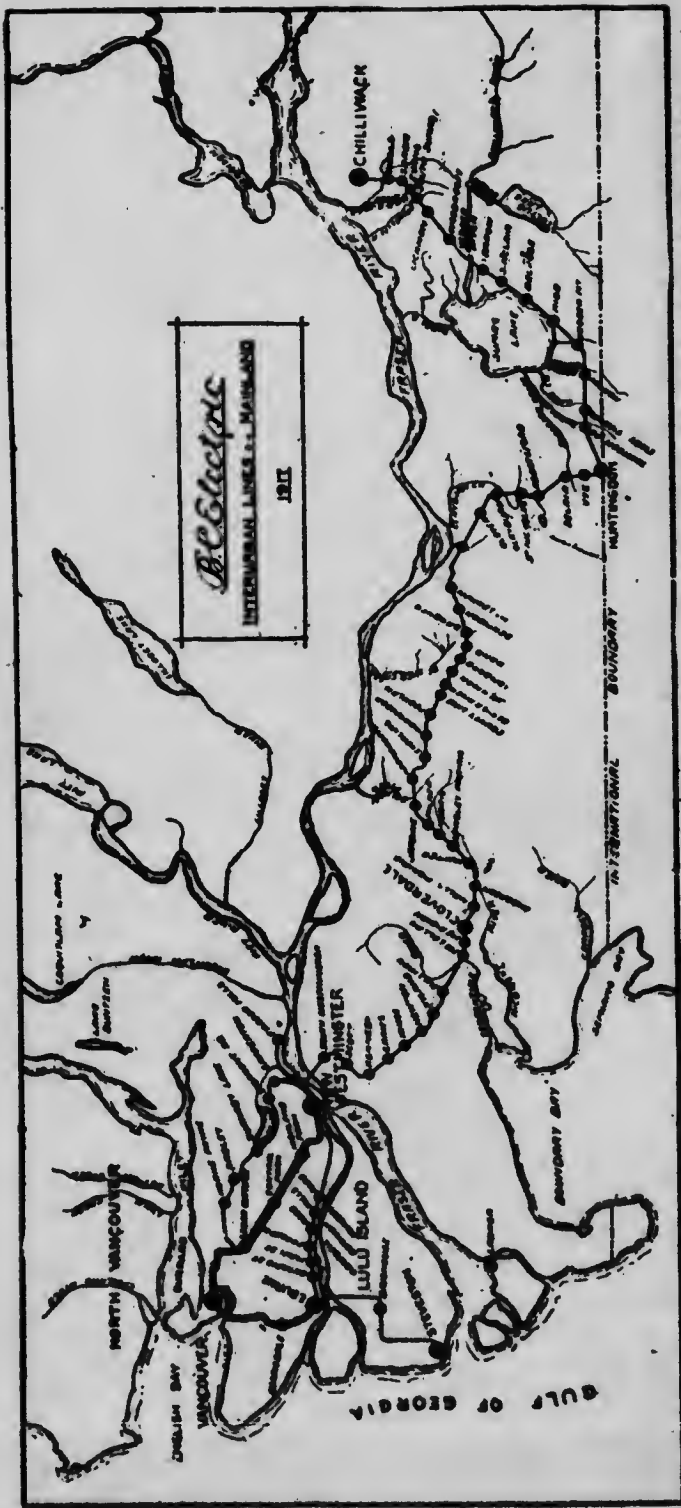
### *North Vancouver Lines*

To reach North Vancouver, take ferry from foot of Columbia Street—any city car—and then B. C. Electric cars on North Shore connecting with all ferries.

### *Hotels and Stages*

For the Vedder River, accommodation may be obtained at Vedder Crossing Inn, reached by stage from Sardis or Chilliwack. Accommodation should be arranged in advance. Our agents will telephone, if requested.

Hotels adjacent to other streams will be found at Cloverdale, Fort Langley and Abbotsford.



*B.C. Electric*  
 INTERURBAN LINES IN BRITISH COLUMBIA  
 1911

THE LONGEST ELECTRIC INTERURBAN LINE IN CANADA—FAST FREIGHT SERVICE.



