

**CIHM  
Microfiche  
Series  
(Monographs)**

**ICMH  
Collection de  
microfiches  
(monographies)**



**Canadian Institute for Historical Microreproductions / Institut canadien de microreproductions historiques**

**© 1998**

## Technical and Bibliographic Notes / Notes techniques et bibliographiques

The Institute has attempted to obtain the best original copy available for filming. Features of this copy which may be bibliographically unique, which may alter any of the images in the reproduction, or which may significantly change the usual method of filming are checked below.

- Coloured covers / Couverture de couleur
- Covers damaged / Couverture endommagée
- Covers restored and/or laminated / Couverture restaurée et/ou pelliculée
- Cover title missing / Le titre de couverture manque
- Coloured maps / Cartes géographiques en couleur
- Coloured ink (i.e. other than blue or black) / Encre de couleur (i.e. autre que bleue ou noire)
- Coloured plates and/or illustrations / Planches et/ou illustrations en couleur
- Bound with other material / Relié avec d'autres documents
- Only edition available / Seule édition disponible
- Tight binding may cause shadows or distortion along interior margin / La reliure serrée peut causer de l'ombre ou de la distorsion le long de la marge intérieure.
- Blank leaves added during restorations may appear within the text. Whenever possible, these have been omitted from filming / Il se peut que certaines pages blanches ajoutées lors d'une restauration apparaissent dans le texte, mais, lorsque cela était possible, ces pages n'ont pas été filmées.
- Additional comments / Commentaires supplémentaires:

Page 13 is incorrectly numbered page 3.

L'Institut a microfilmé le meilleur exemplaire qu'il lui a été possible de se procurer. Les détails de cet exemplaire qui sont peut-être uniques du point de vue bibliographique, qui peuvent modifier une image reproduite, ou qui peuvent exiger une modification dans la méthode normale de filmage sont indiqués ci-dessous.

- Coloured pages / Pages de couleur
- Pages damaged / Pages endommagées
- Pages restored and/or laminated / Pages restaurées et/ou pelliculées
- Pages discoloured, stained or foxed / Pages décolorées, tachetées ou piquées
- Pages detached / Pages détachées
- Showthrough / Transparence
- Quality of print varies / Qualité inégale de l'impression
- Includes supplementary material / Comprend du matériel supplémentaire
- Pages wholly or partially obscured by errata slips, tissues, etc., have been refilmed to ensure the best possible image / Les pages totalement ou partiellement obscurcies par un feuillet d'errata, une pelure, etc., ont été filmées à nouveau de façon à obtenir la meilleure image possible.
- Opposing pages with varying colouration or discolourations are filmed twice to ensure the best possible image / Les pages s'opposant ayant des colorations variables ou des décolorations sont filmées deux fois afin d'obtenir la meilleure image possible.

This item is filmed at the reduction ratio checked below / Ce document est filmé au taux de réduction indiqué ci-dessous.

	10x		14x		18x		22x		26x		30x	
	12x		16x		20x		24x		28x		32x	

The copy filmed here has been reproduced thanks to the generosity of:

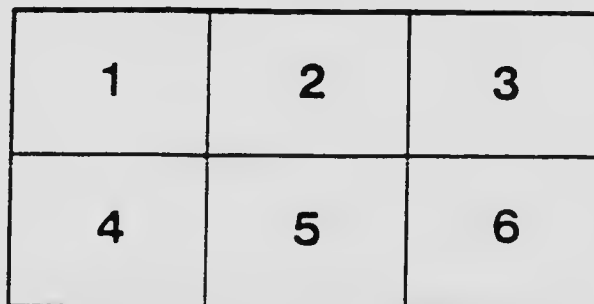
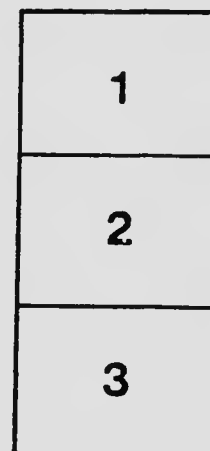
National Library of Canada

The images appearing here are the best quality possible considering the condition and legibility of the original copy and in keeping with the filming contract specifications.

Original copies in printed paper covers are filmed beginning with the front cover and ending on the last page with a printed or illustrated impression, or the back cover when appropriate. All other original copies are filmed beginning on the first page with a printed or illustrated impression, and ending on the last page with a printed or illustrated impression.

The last recorded frame on each microfiche shall contain the symbol  $\rightarrow$  (meaning "CONTINUED"), or the symbol  $\nabla$  (meaning "END"), whichever applies.

Maps, plates, charts, etc., may be filmed at different reduction ratios. Those too large to be entirely included in one exposure are filmed beginning in the upper left hand corner, left to right and top to bottom, as many frames as required. The following diagrams illustrate the method:



L'exemplaire filmé fut reproduit grâce à la générosité de:

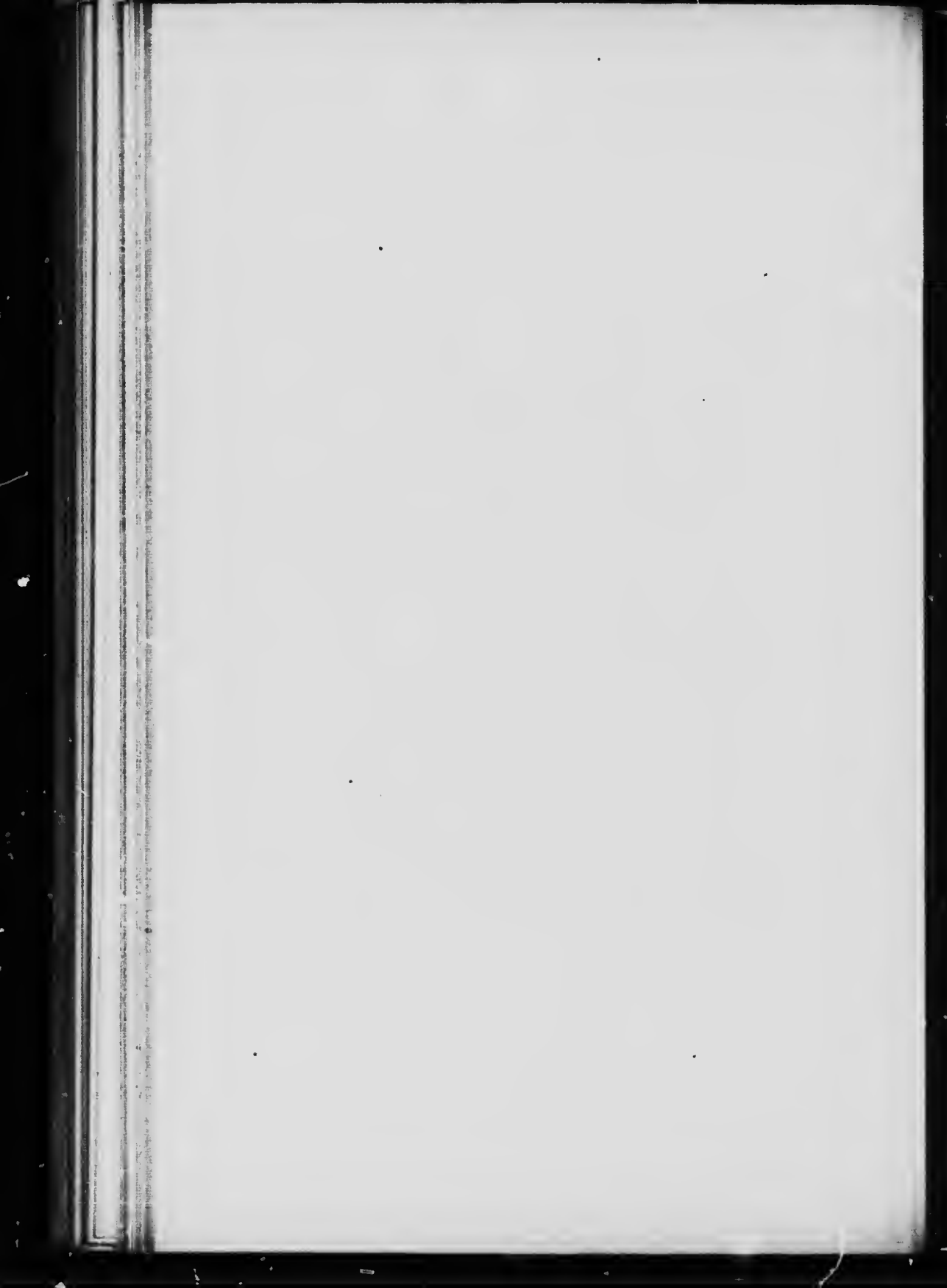
Bibliothèque nationale du Canada

Les images suivantes ont été reproduites avec le plus grand soin, compte tenu de la condition et de la netteté de l'exemplaire filmé, et en conformité avec les conditions du contrat de filmage.

Les exemplaires originaux dont le couverture en papier est imprimée sont filmés en commençant par la première page et en terminent soit par la dernière page qui comporte une empreinte d'impression ou d'illustration, soit par le second plat, selon le cas. Tous les autres exemplaires originaux sont filmés en commençant par la première page qui comporte une empreinte d'impression ou d'illustration et en terminent par la dernière page qui comporte une telle empreinte.

Un des symboles suivants apparaîtra sur la dernière image de chaque microfiche, selon le cas: le symbole  $\rightarrow$  signifie "A SUIVRE", le symbole  $\nabla$  signifie "FIN".

Les cartes, planches, tableaux, etc., peuvent être filmés à des taux de réduction différents. Lorsque le document est trop grand pour être reproduit en un seul cliché, il est filmé à partir de l'angle supérieur gauche, de gauche à droite, et de haut en bas, en prenant le nombre d'images nécessaire. Les diagrammes suivants illustrent la méthode.



---

LABORATORY  
OF THE  
INLAND REVENUE DEPARTMENT  
OTTAWA, CANADA

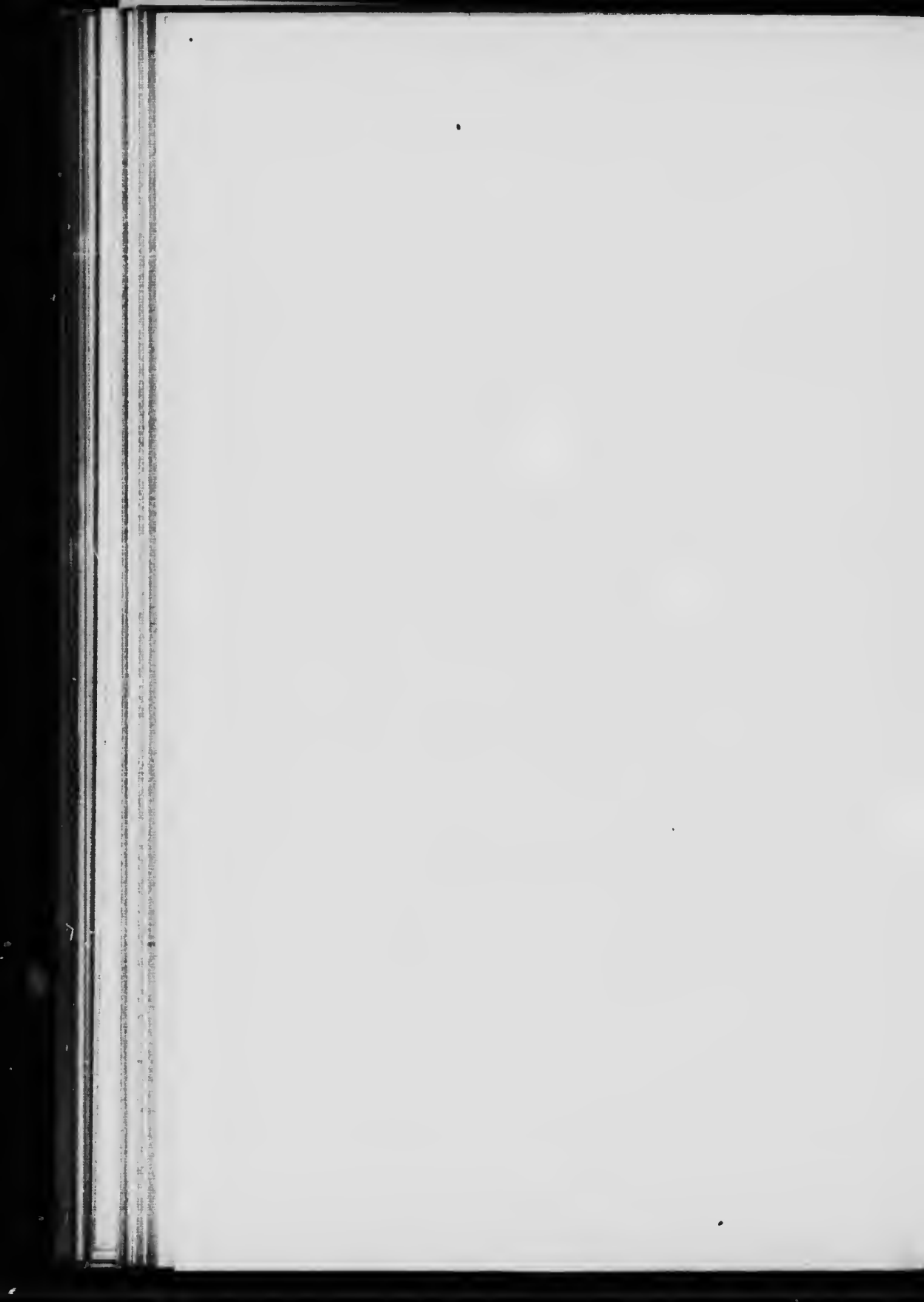
---

BULLETIN No. 109

---

CREAM OF TARTAR.

---



LABORATORY  
OF THE  
INLAND REVENUE DEPARTMENT

OTTAWA, CANADA

BULLETIN No. 109

CREAM OF TARTAR.

OTTAWA, ONT., September, 19, 1905.

W. J. GERALD, Esq.,  
Deputy Minister of Inland Revenue Department.

SIR—I have the honour to report upon 180 samples of Cream of Tartar, collected throughout the Dominion of Canada, in July and August of this year, in accordance with your instructions. Fifteen samples were collected in each inspectoral district. 148 samples have been worked by the District Analysts, the remainder in this laboratory.

The subjoined synoptical table gives the results of analysis:—

District.	Genuine.	Adulterated.	Doubtful.	Total.
Nova Scotia.....	13	1	1	15
New Brunswick.....	14	0	1	15
Prince Edward Island.....	14	0	1	15
Quebec.....	6	7	2	15
St. Hyacinthe.....	8	6	1	15
Montreal.....	10	3	2	15
Kingston.....	8	6	1	15
Toronto.....	12	3	0	15
London.....	10	2	3	15
Manitoba.....	11	3	1	15
Northwest Territories.....	14	1	0	15
British Columbia.....	12	2	1	15
Total.....	132	34	14	180
Genuine.....	73 per cent.			
Adulterated.....	19 "			
Doubtful.....	8 "			
	100			

Of the 14 samples classified as 'doubtful,' 13 are so designated on account of the presence of traces of starch, or other impurity, too small in amount to have been designedly added; and one sample, because of so much sulphate of lime as to suggest the possibility of its intentional addition, although this cannot be held to be proven.

Cream of Tartar has been examined on four different occasions, before the present, and the results are tabulated below:—

Date of Collection.	Number of Samples Examined.	Found Genuine.	Same Expressed as Percentage.
1887 .....	36	22	61
1889 .....	86	52	60
1896 .....	99	65	66
1900 .....	65	57	88
1905 .....	180	132	73

An improvement is seen up to 1900, since which time there is a notable falling off. The chief adulterants are burnt alum and phosphate of lime and starch. In most cases these adulterants are present together.

It is important to note that there exists a great range of value among those samples which are classed as genuine. It is unfortunate that no legal standard exists for commercial Cream of Tartar. The standard of the British Pharmacopœia must, of course, be accepted for Cream of Tartar as dispensed by apothecaries; but it would be too much to expect this standard to be reached by ordinary Cream of Tartar. The Pharmacopœia defines *purified Cream of Tartar* as containing less than 2½ per cent. of impurity, which is equivalent to saying that it must contain 97½ per cent of real bi-tartrate of potash. Judged by such a standard, only 23 samples (= 13 per cent) of the present collection could be styled genuine. The following table shows the value of the so-called genuine samples in the present collection on a basis of their content of bi-tartrate of potash.

23 samples contain more than .....	97 per cent.
32 " " " .....	95 "
69 " " " .....	90 "
130 " " " .....	85 "

Ordinary commercial Cream of Tartar is ground argols which has been more or less purified. Argols invariably contains both tartrate and sulphate of lime, and these lime salts appear in the commercial Cream of Tartar. They result in part from being natural to the wine, but chiefly from the so-called 'plastering' of the wine. The manufacturer of Cream of Tartar is not responsible for their presence, but, inasmuch as they reduce the value of the article for purposes of bread-making, their presence is a distinct disadvantage to the purchaser. It follows that genuine samples of Cream of Tartar may differ greatly in value. Samples containing 97 per cent of bi-tartrate of potash are worth, pound for pound, 12 per cent more than samples containing only 85 per cent. Purified Cream of Tartar is made from argols which have been subjected to processes of solution and recrystallization, by which most of the lime salts are got rid of. Such an article should, of course command a higher price than the ordinary Cream of Tartar.

An inspection of Tables 1 and 2 will show that genuine Cream of Tartar of 95 per cent purity, sells at about 40 cents per pound; while many samples of about 85 per cent are sold at the same price.

(See Nos. 5, 7, 14, New Brunswick; 1, 10, Quebec; 6, St. Hyacinthe; 1, 5, 7, 11, Toronto; 3, 9, 10, 13, 14, London; 14, Manitoba; 5, 10, 12, British Columbia).

So long as a limit is not recognized to the amount of lime salts (tartrate and sulphate) which may be present, without acknowledgement, in a commercial Cream of Tartar,



this variable and unknown value of the article exists to the prejudice of the purchaser, and I believe, to the annoyance and chagrin of the dealer, who may be unaware of the quality of the article he sells. There is the further temptation of the dishonest manufacturer, who may add sulphate of lime (terra alba) to the article with a view of cheapening it. I suggested in 1889 (see Bull. 12) that commercial Cream of Tartar containing more than 10 per cent of tartrate of lime should be designated as 'low grade.' Perhaps a better means of ensuring the right of the purchaser would be a specific guaranty of purity expressed as a percentage. Thus, Cream of Tartar of 97 per cent would mean an article containing 97 per cent of potassium bi-tartrate, and therefore fulfilling the requirements of the Pharmacopœia. Ninety per cent grade would imply not only that the article was genuine Cream of Tartar, but that it contained 90 per cent of real potassium bi-tartrate. It is evident that if a 90 per cent article sells at 40 cents per pound, an 80 per cent Cream of Tartar should sell at 33 cents a pound.

I would respectfully recommend that this report be published as Bulletin 109.

I have the honour to be, sir,

Your obedient servant,

A. MCGILL,

*Acting Chief Analyst.*

TABLE I.—INSPECTION OF CREAM OF TARTAR—JULY, 1905.

Date of Collection.	Collector's Number.	Serial Number.	Name and Address of Vendor.	Cost per lb.	Remarks.
<i>District of Nova Scotia—R. J. Waugh, Inspector.</i>					
July	13	27002	1 De Wolf & Lunont, Kentville, N.S.	0 36	
"	14	27007	2 S. L. Cross, Kentville	0 36	
"	14	27009	3 B. H. Dodge "	0 40	
"	14	27014	4 R. E. Harris, Wolfville	0 40	
"	14	27015	5 T. L. Harvey "	0 30	
"	15	27017	6 Wentworth Stores, Windsor, N.S.	0 30	
"	15	27021	7 John Riley, Windsor, N.S.	0 40	
"	15	27023	8 Shoud Bros. "	0 30	
"	18	27025	9 H. C. Barnaby & Son, Bridgewater, N.S.	0 34	
"	18	27027	10 W. F. Porter "	0 36	
"	18	27028	11 D. McKay "	0 30	
"	19	27030	12 J. B. Holden, Lunenburg, N.S.	0 36	
"	19	27033	13 B. G. Herman "	0 36	
"	21	27039	14 Crowe Bros., Truro, N.S.	0 40	
"	25	27046	15 Hattie & Mylius, Halifax	0 36	
<i>District of New Brunswick—J. C. Ferguson, Inspector.</i>					
June	24	24015	1 Maritime Spice & Coffee Co., Ltd., 11 Union St., St. John, N.B.	0 36	
"	27	24019	2 Dearborn & Co., 95 Prince William, St. John, N.B.	0 53	
"	29	24020	3 James McKinnon, Main St., Fairville, St. John, N.B.	0 36	
"	30	24028	4 O. A. Lordly, 736 Main St., St. John, N.B.	0 40	
July	3	24032	5 Walter Gilbert, cor. Princess & Charlotte Sts., St. John, N.B.	0 40	Would not sell as pure goods.
"	4	24034	6 J. F. Shaw, cor. Waterloo & Golding Sts., St. John, N.B.	0 40	
"	6	24040	7 M. E. Grass, 16 German St., St. John, N.B.	0 40	
"	10	24043	8 P. Nase & Son, 2-14 Main St., St. John, N.B.	0 30	
Aug.	22	24073	9 W. H. Cullbert, Peters St., Sussex, K. C., N.B.	0 30	
"	23	24078	10 H. S. Keith, Main St., Petticoidiac, Westmoreland Co., N.B.	0 40	
"	24	24081	11 O. M. Williamson & Co., Main St., Shediac, Westmoreland Co., N.B.	0 40	
"	25	24087	12 W. G. Bell, Main St., Moncton, N.B.	0 40	
"	28	24091	13 W. J. Kent Co., Ltd., Main St., Bathurst, Gloucester Co., N.B.	0 40	
"	29	24095	14 James Mailer, Newcastle, N.B., Public Square, East	0 40	
"	30	24099	15 J. B. Snowball Co., Ltd., Water St., Chatham, N.B.	0 50	
<i>District of P. E. Island—T. Moore, Inspector.</i>					
June	27	24434	1 Stearns & Son, Souris, P. E. I.	0 30	
"	27	24438	2 A. Currie "	0 36	
"	27	24440	3 Matthew & McLean "	0 32	
"	27	24442	4 Sterns Bros. "	0 32	
"	28	24444	5 John McKenna, Charlottetown	0 36	
"	28	24450	6 R. F. Maddigan "	0 36	
"	28	24452	7 Sanderson & Co. "	0 32	
"	28	24456	8 Jenkins & Son "	0 36	
"	28	24460	9 A. Gates & Co. "	0 36	
"	28	24463	10 Beer & Goff "	0 36	
July	5	24466	11 Dyer, Woodman & Hunter, Alberton	0 36	
"	5	24468	12 J. H. Myrick, Alberton	0 30	
"	6	24477	13 Brace & McKay, Summerside	0 30	
"	6	24484	14 A. McLean, Georgetown	0 30	
"	6	24486	15 W. W. Jenkins "	0 30	

TABLE I. INSPECTION OF CREAM OF TARTAR—JULY, 1905—Continued.

Date of Collection.	Collector's Number.	Serial Number.	Name and Address of Vendor.	Cost per lb.	Remarks.
			<i>District of Quebec—Chas. E. Roy, Inspector.</i>	\$ cts.	
July	20	27565	1 J. E. Lachance, 176 Dorchester, Que.	0 40	
"	20	27566	2 Arcadius Caron, Montmagny.	0 40	
"	21	27567	3 J. B. Hudon, L'Islet.	0 40	
"	21	27568	4 Jos. Roy, Ste. Anne de la Pocadière.	0 30	
"	22	27569	5 A. L. Pelletier, Rivière du Loup.	0 40	Guaranteed absolutely pure.
"	24	27570	6 H. A. Hamel, Chicoutimi.	0 40	
"	25	27571	7 C. Rivard & Co, Roberval.	0 36	
"	25	27572	8 Art Du Tremblay "	0 40	
Aug.	10	27573	9 Ed. Pouliot, St. Grégoire de Montmorency.	0 30	
"	10	27574	10 A. A. J. Gingras, Limoulin.	0 40	
"	10	27575	11 J. Papin, 132 Rue Massue, St. Lawrence, Que.	0 40	
"	12	27576	12 A. Turco, 240 Rue Colomb, St. Lawrence, Que.	0 40	
"	12	27577	13 A. Barry, 612 Rue St. Valier, St. Lawrence, Que.	0 40	
July	27	27578	14 A. J. Boivin, Pt. Lévis.	0 40	
"	28	27579	15 L. Méthot, 23 Notre Dame, Quebec.	0 40	
			<i>District of St. Hyacinthe—J. C. Rindreau, Inspector.</i>		
June	22	24552	1 E. J. Pearson, Richmond.	0 40	
"	22	24553	2 H. C. Atkinson, Melbourne.	0 40	
"	22	24554	3 Mackrae Bros., Richmond.	0 36	
"	22	24555	4 A.M. Paradis, Brompton Falls.	0 40	Box marked pure.
"	22	24556	5 L. O. Papin & fils, Arthabaskaville.	0 40	
"	22	24557	6 T. Dault "	0 40	" "
"	23	24558	7 L. P. St. Pierre, Three Rivers.	0 40	
"	23	24559	8 H. Rivard & Cie "	0 40	
"	23	24560	9 T. Bourinval "	0 40	
"	26	24561	10 P. P. Lanoie, St. Anne.	0 36	
"	26	24562	11 P. Legendre, Yamaska.	0 40	
"	26	24563	12 Geo. Beaulac, Scel.	0 40	" "
"	26	24564	13 Ed. Collette, Verchères.	0 36	
"	28	24565	14 Petit frères, St. Hyacinthe.	0 40	
"	28	24566	15 E. A. Piché, Drummondville.	0 36	
			<i>District of Montreal—J. J. Costigan, Ins.</i>		
June	21	26964	1 J. B. Deschamp, 371 Centre, Montreal.	0 20	
"	26	26965	2 Marrott & Leblanc, St. Paul St.	0 20	
"	26	26966	3 R. Herron & Co. "	0 26	
"	26	26967	4 S. H. Ewing & Sons, King St.	0 25	
"	27	26968	5 J. A. Simard & Co., St. Paul St.	0 24	Labelled pure.
"	27	26969	6 E. D. Marceau. "	0 20	Wholesale dealer and claims to deal in pure goods only.
"	27	26670	7 J. V. Boudrias "	0 30	
"	27	26671	8 J. D. Boileau, 54 Bonsecour St.	0 40	
"	27	26672	9 Lecour & Decary, 278 Craig, East	0 50	
"	27	26673	10 J. H. Levesque, 119 St. Denis	0 50	
"	27	26674	11 J. Chartier, 120 "	0 40	
"	27	26675	12 J. H. Harte, Notre Dame, West	0 50	
"	27	26676	13 S. Carsley Co., Ltd. "	0 40	
"	27	26677	14 M. Kilkerly, 247 Craig, West	0 36	
"	27	26678	15 John T. Lyons Co., 6 Bleury	0 50	
			<i>District of Kingston—J. J. Costigan, Inspector.</i>		
June	20	25436	1 H. Boivin, 80 Queen St., Ottawa.	0 40	
"	20	25437	2 J. E. McAdam, 548 Wellington St., Ottawa.	0 30	
"	20	25438	3 A. L. Pinard, 118 Rideau St., Ottawa.	0 40	
"	22	25439	4 John Henderson, Brock St., Kingston.	0 40	
"	22	25440	5 P. G. Wilmot, King St.	0 40	
"	22	25441	6 John Gilbert, Barrie St.	0 40	

TABLE I.—INSPECTION OF CREAM OF TARTAR—JULY, 1905—Continued.

Date of Collection.	Collector's Number.	Serial Number.	Name and Address of Vendor.	Cost per lb.	Remarks.
<i>District of Kingston—J. J. Costigan, Inspector—</i>					
Concluded.				8 cts.	
June 24	25447	7	V. F. Kincaid, Brockville.....	0 40	
" 24	25448	8	Wm. LeViner ".....	0 40	
" 24	25449	9	John Culbert ".....	0 40	
" 24	25450	10	W. H. McConkey ".....	0 40	
" 23	25442	11	John Panter & Son, Front St., Belleville.....	0 40	
" 23	25443	12	Geo. Boyle, Front Street, Belleville.....	0 40	
" 23	25444	13	O. S. Hicks ".....	0 40	
" 23	25445	14	A. L. Geen, Belleville.....	0 40	
" 23	25446	15	A. J. McCroden, Front St., Belleville.....	0 40	
<i>District of Toronto—J. J. Costigan, Inspector.</i>					
July 18	24825	1	L. Kelly, 380 Spadina Ave., Toronto.....	0 40	Vendor stated article was compound.
" 18	24826	2	M. Mayer & Son, 408 Spadina Ave., Toronto.....	0 40	
" 18	24827	3	R. N. Ferguson, 272 College St. ".....	0 40	
" 18	24828	4	W. J. Sykes, 344 ".....	9 40	
" 19	24829	5	Bradley & Sons, St. Paul St., St. Catharines.....	0 40	
" 19	24830	6	A. J. Greenwood & Co., St. Catharines.....	0 40	
" 19	24831	7	Southcott & Potter ".....	0 40	
" 19	24832	8	P. M. Dwyer ".....	0 40	
" 19	24833	9	C. W. Hellems & Co. ".....	0 40	
" 19	24834	10	Theo. Sweet ".....	0 40	
" 19	24835	11	Walker & Abbs ".....	0 40	
" 20	24836	12	F. F. Dalley Co., Hughson St., Hamilton.....	0 25	
" 20	24837	13	Hamilton Coffee & Spice Co. ".....	0 25	
" 21	24838	14	Todhunter & Mitchell, Front St., Toronto.....	0 25	
" 21	24839	15	Dalton Bros., 191 Front St., Toronto.....	0 20	
<i>District of London—Thos. Kidd, Inspector.</i>					
June 28	22324	1	Fred. Milman, Woodstock.....	0 40	
" 28	22331	2	G. S. Winter & Son, Brantford.....	0 40	
" 22	22303	3	William Hill & Co., Mitchell.....	0 40	
" 26	22307	4	Oman Mallion, Stratford.....	0 40	
" 26	22312	5	J. M. Aam, St. Mary's.....	0 40	
" 27	22316	6	Mrs. Geo. Armstrong, 495 Richmond St., London.....	0 40	
" 27	22320	7	H. W. Healy, Ingersol.....	0 40	
July 6	22338	8	W. M. Metcalf & Co., Berlin.....	0 40	
" 7	22343	9	Peter Anderson, Guelph.....	0 40	
" 7	22349	10	Andrew Davey, Preston.....	0 40	
" 10	22353	11	J. McDermot, Georgetown.....	0 40	
" 12	22358	12	Robert Scott, Beeton, Ont.....	0 40	
" 13	22361	13	J. J. McKnight, Tottenham.....	0 40	
" 14	22370	14	J. R. Wood, Fergus.....	0 40	
" 14	22372	15	Andrew Young, Seaforth.....	0 40	
<i>District of Manitoba—W. M. Conklin, Inspector.</i>					
July 25	25509	1	Foley, Lock & Sarson, Winnipeg.....	0 30	
" 25	25510	2	Jobin & Marrin ".....	0 30	
" 25	25511	3	Kenech, McKenzie & Co. ".....	0 30	
" 27	25512	4	Blue Ribbon Mfg. Co. ".....	0 30	
" 27	25513	5	Campbell Bros. & Wilson ".....	0 30	
" 27	25514	6	Codville & Co ".....	0 30	
" 28	25515	7	L. J. Green & Son ".....	0 20	
" 28	25516	8	Bergevin & Pardee ".....	0 25	
" 28	25517	9	Williamson Bros. ".....	0 20	
" 28	25518	10	T. J. Davis ".....	0 20	
" 28	25519	11	Sutherland Bros. ".....	0 20	
Aug. 8	25536	12	Sharp & Mutch, Crystal City.....	0 40	
" 8	25538	13	W. Endicott, Pilot Mound.....	0 40	
" 9	25540	14	Moore & Hills, Cartwright.....	0 40	
" 10	25543	15	Miller & Haney, Ninga.....	0 40	

TABLE I.—INSPECTION OF CREAM OF TARTAR—JULY, 1905—*Concluded.*

Date of Collection.	Collector's Number.	Serial Number.	Name and Address of Vendor.	Cost per lb.	Remarks.
<i>District of Calgary—W. Fletcher, Inspector.</i>					
July	18	21799	1 Hatfield & McLaren, Calgary . . . . .	0 40	
"	18	21803	2 Brown & Knight " . . . . .	0 40	
"	21	21806	3 Canada Grocers' Sta. Branch, Calgary. . . . .	0 30	
"	21	21810	4 Codville, Smith Co., Ltd. " . . . . .	0 30	
"	22	21816	5 A. S. Cameron, Calgary. " . . . . .	0 30	
"	25	21822	6 Star Trading Co., Wetaskiwin . . . . .	0 40	
"	25	21825	7 Compton & Montgomery, Wetaskiwin . . . . .	0 15	
"	27	21837	8 Hudson Bay Co., Edmonton . . . . .	0 40	
"	27	21841	9 Revillon Bros. " . . . . .	0 40	
"	27	21847	10 McDougall & Secord " . . . . .	0 40	
"	27	21851	11 Williamson Bros., Winnipeg. . . . .	0 40	
"	28	21858	12 C. Sugarman, Strathcona . . . . .	0 40	
"	28	21864	13 T. P. Malone " . . . . .	0 40	
"	28	21869	14 Douglass Bros. " . . . . .	0 40	
"	28	21873	15 A. H. Richards & Co., Strathcona. . . . .	0 40	
<i>District of British Columbia—E. B. Parkinson, Inspector.</i>					
June	26	26906	1 A. Desbusay, Vancouver . . . . .	0 40	
"	26	26909	2 J. Deal " . . . . .	0 40	
"	27	26912	3 C. E. Turner " . . . . .	0 40	
"	28	26930	4 La Belle & Co " . . . . .	0 40	
"	28	26931	5 G. Hobson " . . . . .	0 40	
"	29	26934	6 A. J. Sinclair, New Westminster, B.C. . . . .	0 40	
July	6	26946	7 R. Mowat, Victoria, B.C. . . . .	0 40	
"	6	26954	8 Fred. Crane " . . . . .	0 45	
"	6	26957	9 " " . . . . .	0 50	
"	7	26969	10 Stemler & Collison, Victoria . . . . .	0 40	
"	10	26970	11 H. A. Edgett & Co., Vancouver. . . . .	0 40	
"	18	28014	12 Foran Bros. " . . . . .	0 40	
"	18	28619	13 The Dominion Grocery " . . . . .	0 50	
"	18	28620	14 F. Filion " . . . . .	0 40	
"	18	28023	15 The City Grocery " . . . . .	0 30	

TABLE II. INSPECTION OF CREAM OF TARTAR—JULY, 1905.

District.	Serial Number.	RESULT OF ANALYSIS.							Analyst.	Remarks.		
		Collector's Number.	Starch.	Alumina. $Al_2O_3$ .	Sulphates. $SO_2$ .	Phosphates. $P_2O_5$ .	Available Acidity. CC. N. per 100 grs.	As bicarbonate of potash.				
			p. c.	p. c.	p. c.	p. c.	p. c.	p. c.				
Nova Scotia.	1	27002	.....	.....	.....	.....	.....	476	89.5	C. J. Fagan.	Genuine.	
	2	27007	.....	.....	.....	.....	480	90.2	"	"	"	
	3	27009	.....	.....	.....	.....	494	92.9	C. J. Fagan.	"	"	
	4	27014	.....	.....	.....	.....	530	.....	"	"	"	
	5	27015	.....	2.2	0.54	Present.	480	92.0	"	92.0	"	Adulterated.
	6	27017	.....	.....	.....	Trace	465	85.5	"	85.5	"	Genuine.
	7	27021	.....	.....	.....	.....	475	89.3	"	89.3	"	Doubtful.
	8	27023	.....	.....	.....	.....	465	89.5	"	89.5	"	Genuine.
	9	27025	.....	.....	.....	.....	476	88.4	C. J. Fagan.	88.4	"	"
	10	27027	.....	.....	.....	.....	464	87.2	"	87.2	"	"
	11	27028	.....	.....	.....	.....	464	87.2	"	87.2	"	"
	12	27030	.....	.....	.....	.....	464	87.2	"	87.2	"	"
	13	27033	.....	.....	.....	.....	463	87.2	"	87.2	"	"
	14	27039	.....	.....	.....	.....	470	88.1	"	88.1	"	"
	15	27046	.....	.....	.....	.....	478	89.9	C. J. Fagan.	89.9	"	"
New Brunswick.	1	24015	.....	.....	.....	.....	508	96.5	W. H. Ellis.	96.5	"	"
	2	24019	.....	.....	.....	.....	510	96.9	"	96.9	"	"
	3	24026	.....	.....	.....	.....	474	89.1	"	89.1	"	"
	4	24028	.....	.....	.....	.....	475	89.3	"	89.3	"	"
	5	24032	.....	.....	.....	Much.	425	79.9	"	79.9	"	Doubtful.
	6	24034	.....	.....	.....	.....	465	88.4	C. J. Fagan.	88.4	"	Genuine.
	7	24040	.....	.....	.....	.....	465	87.3	"	87.3	"	"
	8	24043	.....	.....	.....	.....	455	85.5	"	85.5	"	"
	9	24073	.....	.....	.....	.....	470	88.4	"	88.4	"	"
	10	24078	.....	.....	.....	.....	473	88.9	J. T. Donald	88.9	"	"
P. E. Island.	1	24081	.....	.....	.....	.....	468	88.0	J. T. Donald.	88.0	"	"
	2	24087	.....	.....	.....	.....	487	91.6	"	91.6	"	"
	3	24091	.....	.....	.....	.....	520	97.8	"	97.8	"	"
	4	24085	.....	.....	.....	.....	465	87.3	"	87.3	"	"
	5	24059	.....	.....	.....	.....	480	90.2	"	90.2	"	"
	1	24434	.....	Trace	.....	.....	505	94.9	F. X. Valade.	86.3	"	"
	2	24438	.....	.....	.....	.....	459	86.3	"	86.3	"	"
3	24440	.....	.....	.....	.....	464	87.2	C. J. Fagan.	87.2	"	"	

Sample No.	Location	Weight	Percentage	Notes	Analyst	Grade	
24484	P. E. Island.	459	86.3	F. X. Valade.	90.2	"	
24438		464	87.2	C. J. Fagan.	93.6	"	
24440							
24441	Quebec.	198		F. N. Valade.	91.7	"	
24450			475		F. N. Valade.	99.8	"
24452			488		F. N. Valade.	89.5	"
24456			520		F. N. Valade.	89.9	"
24460			476		F. N. Valade.	92.4	"
24463			478		F. N. Valade.	88.9	"
24466			480		F. X. Valade.	88.4	Doubtful.
24468			475		F. X. Valade.	88.4	Genuine.
24477			482		F. N. Valade.	90.2	"
24484			480		C. J. Fagan.	87.7	"
27565			456		"	89.9	Doubtful.
27566			478		"	89.9	Genuine.
27567			486		"	91.4	Adulterated.
27568			430	35.6	"	59.6	Genuine.
27570			530	4.90	"	88.7	Adulterated.
27571		472	0.96	"		"	
27572		540	18.7	"	80.8	Genuine, but low grade.	
27575		578	27.6	"		Adulterated.	
27576		525		"		"	
27577		430	7.0	"		"	
27578		450	10.3	"		"	
27579		528	4.9	Present.	92.1	Doubtful.	
27573		490	0.31	Present.	97.4	Genuine.	
27574		518	0.86	"	90.2	"	
24552	St. Hyacinthe.	480		J. T. Donald.	89.5	"	
24553			476		F. X. Valade.	96.7	"
24554			514		"		"
24554			512		"		Adulterated.
24555			530	6.2	"	86.5	Genuine.
24556			460	9.0	Present.		Adulterated.
24557			460		"		Genuine.
24558			460	6.87	Present.		Adulterated.
24559			540	11.6	"	98.9	Genuine.
24560			526	4.94	"	90.2	"
24561			480		"	476	Doubtful.
24562			476		"	89.5	Adulterated.
24563			404	0.27	Present.	92.9	Genuine.
24564			600	12.1	"	88.7	Adulterated.
24565			472	6.75	"		Genuine.
24566		540	2.99	Present.		Adulterated - acid phosphate of lime.	
26664	Montreal.	540	8.7	"	21.4	Genuine.	
26665			486	2.18	"	89.5	"
26666			476		W. H. Ellis.	89.5	Adulterated with starch and phosphate.
26667			476	6.6	"		Genuine.
26668			482		"		Adulterated.
26669			468		"	88.0	Genuine.
26670			474		"	89.1	"
26671			424	38.8	Present.		Adulterated.







TABLE II.—INSPECTION OF CREAM OF TARTAR—JULY, 1905—Concluded.

District.	Serial number.	RESULT OF ANALYSIS.										Analyst.	Remarks.
		Collector's Number.	Starch.	Alumina. $Al_2O_3$ .	Sulphates. $SO_2$ .	Phosphates. $P_2O_5$ .	Available Acidity.		p. c.	p. c.	p. c.		
							CC. N. per 100 grs.	As bi-tartrate of potash.					
British Columbia Con.	1	26900	p. c.	p. c.	p. c.	p. c.	472	88.7	100.0	C. J. Fagan...	Doubtful		
	2	26912	1.0	.....	.....	.....	532	100.0	"	Genuine.			
	3	26930	.....	.....	.....	.....	480	90.2	"	"			
	4	26931	.....	.....	.....	.....	460	86.5	"	"			
	5	26934	.....	.....	.....	.....	480	90.2	C. J. Fagan...	"			
	6	26946	.....	.....	.....	.....	486	91.4	"	"			
	7	26954	.....	Present.	Present.	Present.	575	.....	.....	.....	Adulterated; is burnt alum only.		
	8	26957	3.6	.....	.....	Present.	500	.....	.....	.....	Adulterated.		
	9	26963	.....	.....	.....	.....	465	87.3	100.0	C. J. Fagan...	Genuine.		
	10	26970	.....	.....	.....	.....	532	100.0	"	"			
	11	28014	.....	.....	.....	.....	465	87.5	"	"			
	12	28019	.....	.....	.....	.....	528	99.3	J. T. Donald.	"			
	13	28020	.....	.....	.....	.....	470	88.4	"	"			
	14	28023	.....	.....	.....	.....	460	86.5	"	"			
	15	.....	.....	.....	.....	.....	.....	.....	.....	.....	"		

