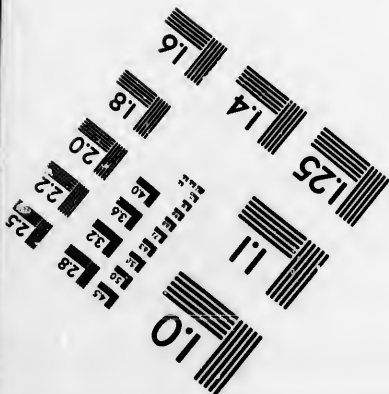
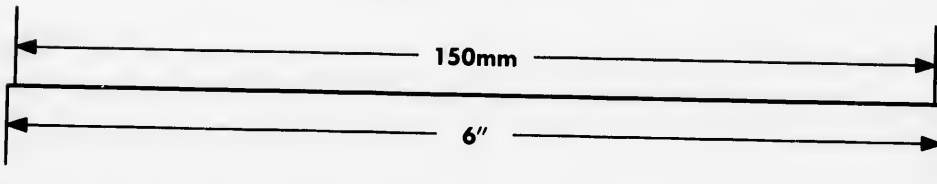
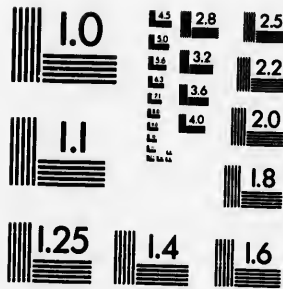
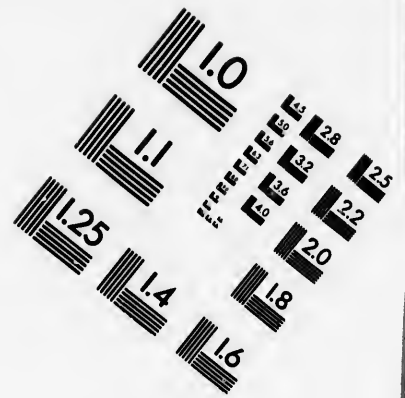
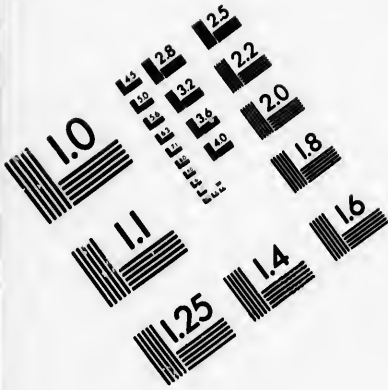


IMAGE EVALUATION TEST TARGET (MT-3)



APPLIED IMAGE, Inc
 1653 East Main Street
 Rochester, NY 14609 USA
 Phone: 716/482-0300
 Fax: 716/288-5989

© 1993, Applied Image, Inc., All Rights Reserved



**CIHM
Microfiche
Series
(Monographs)**

**ICMH
Collection de
microfiches
(monographies)**



Canadian Institute for Historical Microreproductions / Institut canadien de microreproductions historiques



© 1994

Technical and Bibliographic Notes / Notes techniques et bibliographiques

The Institute has attempted to obtain the best original copy available for filming. Features of this copy which may be bibliographically unique, which may alter any of the images in the reproduction, or which may significantly change the usual method of filming, are checked below.

L'Institut a microfilmé le meilleur exemplaire qu'il lui a été possible de se procurer. Les détails de cet exemplaire qui sont peut-être uniques du point de vue bibliographique, qui peuvent modifier une image reproduite, ou qui peuvent exiger une modification dans la méthode normale de filmage sont indiqués ci-dessous.

Coloured covers/
Couverture de couleur

Coloured pages/
Pages de couleur

Covers damaged/
Couverture endommagée

Pages damaged/
Pages endommagées

Covers restored and/or laminated/
Couverture restaurée et/ou pelliculée

Pages restored and/or laminated/
Pages restaurées et/ou pelliculées

Cover title missing/
Le titre de couverture manque

Pages discoloured, stained or foxed/
Pages décolorées, tachetées ou piquées

Coloured maps/
Cartes géographiques en couleur

Pages detached/
Pages détachées

Coloured ink (i.e. other than blue or black)/
Encre de couleur (i.e. autre que bleue ou noire)

Showthrough/
Transparence

Coloured plates and/or illustrations/
Planches et/ou illustrations en couleur

Quality of print varies/
Qualité inégale de l'impression

Bound with other material/
Relié avec d'autres documents

Continuous pagination/
Pagination continue

Tight binding may cause shadows or distortion along interior margin/
La reliure serrée peut causer de l'ombre ou de la distorsion le long de la marge intérieure

Includes index(es)/
Comprend un (des) index

Title on header taken from:/
Le titre de l'en-tête provient:

Blank leaves added during restoration may appear within the text. Whenever possible, these have been omitted from filming/
Il se peut que certaines pages blanches ajoutées lors d'une restauration apparaissent dans le texte, mais, lorsque cela était possible, ces pages n'ont pas été filmées.

Title page of issue/
Page de titre de la livraison

Caption of issue/
Titre de départ de la livraison

Masthead/
Générique (périodiques) de la livraison

Additional comments:/
Commentaires supplémentaires:

This copy is a photoreproduction.

This item is filmed at the reduction ratio checked below/
Ce document est filmé au taux de réduction indiqué ci-dessous.

10X	14X	18X	22X	26X	30X
<input type="checkbox"/>	<input type="checkbox"/>	<input type="checkbox"/>	<input type="checkbox"/>	<input type="checkbox"/>	<input type="checkbox"/>
12X	16X	20X	24X	28X	32X

The copy filmed here has been reproduced thanks to the generosity of:

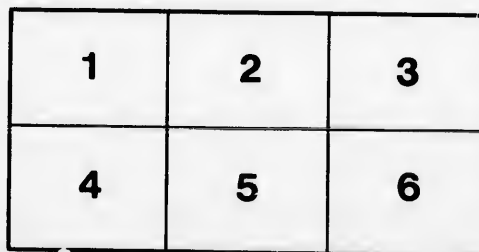
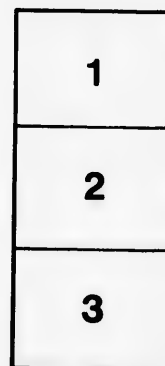
National Library of Canada

The images appearing here are the best quality possible considering the condition and legibility of the original copy and in keeping with the filming contract specifications.

Original copies in printed paper covers are filmed beginning with the front cover and ending on the last page with a printed or illustrated impression, or the back cover when appropriate. All other original copies are filmed beginning on the first page with a printed or illustrated impression, and ending on the last page with a printed or illustrated impression.

The last recorded frame on each microfiche shall contain the symbol \rightarrow (meaning "CONTINUED"), or the symbol ∇ (meaning "END"), whichever applies.

Maps, plates, charts, etc., may be filmed at different reduction ratios. Those too large to be entirely included in one exposure are filmed beginning in the upper left hand corner, left to right and top to bottom, as many frames as required. The following diagrams illustrate the method:



L'exemplaire filmé fut reproduit grâce à la générosité de:

Bibliothèque nationale du Canada

Les images suivantes ont été reproduites avec le plus grand soin, compte tenu de la condition et de la netteté de l'exemplaire filmé, et en conformité avec les conditions du contrat de filmage.

Les exemplaires originaux dont la couverture en papier est imprimée sont filmés en commençant par le premier plat et en terminant soit par la dernière page qui comporte une empreinte d'impression ou d'illustration, soit par le second plat, selon le cas. Tous les autres exemplaires originaux sont filmés en commençant par la première page qui comporte une empreinte d'impression ou d'illustration et en terminant par la dernière page qui comporte une telle empreinte.

Un des symboles suivants apparaîtra sur la dernière image de chaque microfiche, selon le cas: le symbole \rightarrow signifie "A SUIVRE", le symbole ∇ signifie "FIN".

Les cartes, planches, tableaux, etc., peuvent être filmés à des taux de réduction différents. Lorsque le document est trop grand pour être reproduit en un seul cliché, il est filmé à partir de l'angle supérieur gauche, de gauche à droite, et de haut en bas, en prenant le nombre d'images nécessaire. Les diagrammes suivants illustrent la méthode.

MON

Fruit

EXHIBI

Ed

Mess

PRIN

LIST OF PREMIUMS

OFFERED BY THE

MONTREAL HORTICULTURAL SOCIETY

—AND—

Fruit Growers' Association of the Province of Quebec.

OPEN TO THE PROVINCE OF QUEBEC.

EXHIBITION TO BE HELD AT MONTREAL IN SEPTEMBER, 1886.

DATE TO BE ANNOUNCED LATER.

Entries Close one Week before day of Opening the Exhibition.

LIST OF OFFICERS FOR 1886.

DR. T. STERRY HUNT, *President.*
R. W. SHEPHERD, JUN., *Vice-President.*
HENRY S. EVANS, *Secretary and Treasurer.*

DIRECTORS:

MESSRS. W. EVANS.
R. BRODIE, JUN.
CHAS. GIBB.

MESSRS. JAS. McKENNA.
J. DOYLE.
PROFESSOR D. P. PENHALLOW.
E. J. MAXWELL.

Montreal:

PRINTED AT THE MONTREAL HERALD PRINTING ESTABLISHMENT.

1886.

SB 1

M55

✓

LIST OF EXHIBITS

1886

✓ MONTREAL HORTICULTURAL SOCIETY

AND

Field Co. Association of the Province of Quebec.

COMMISSIONERS OF AGRICULTURE OF QUEBEC.

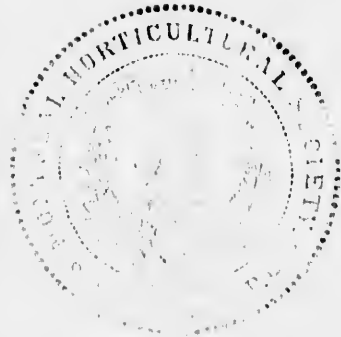
EXHIBITS TO BE SHOWN AT THE EXHIBITION IN

1886

During the week ending day of opening the Exhibition

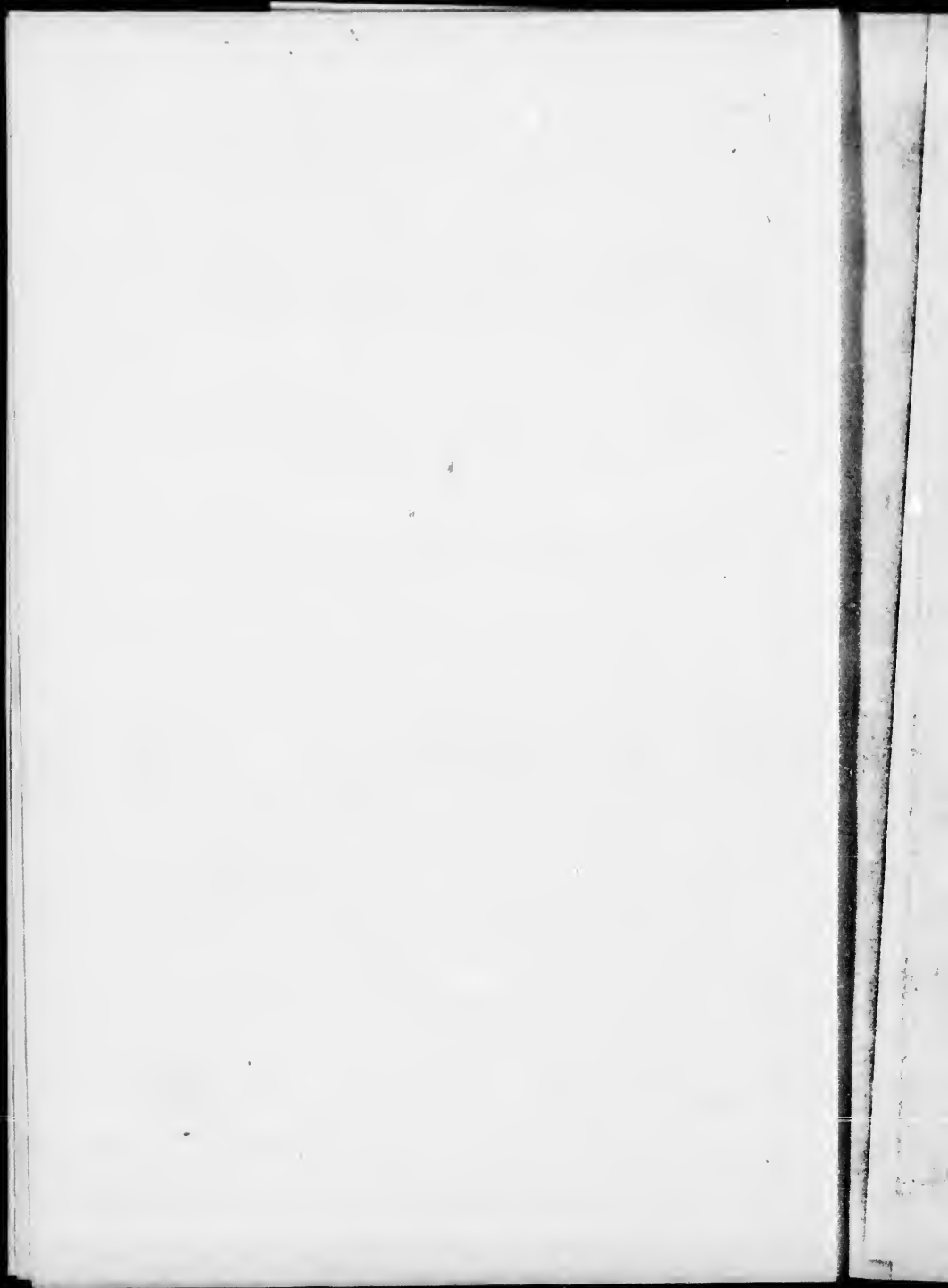
IN THE CITY OF MONTREAL, QUEBEC.

1886



1886

PRINTED AT THE MONTEAL



THE LIBRARY AND READING ROOM

OF THE

SOCIETY

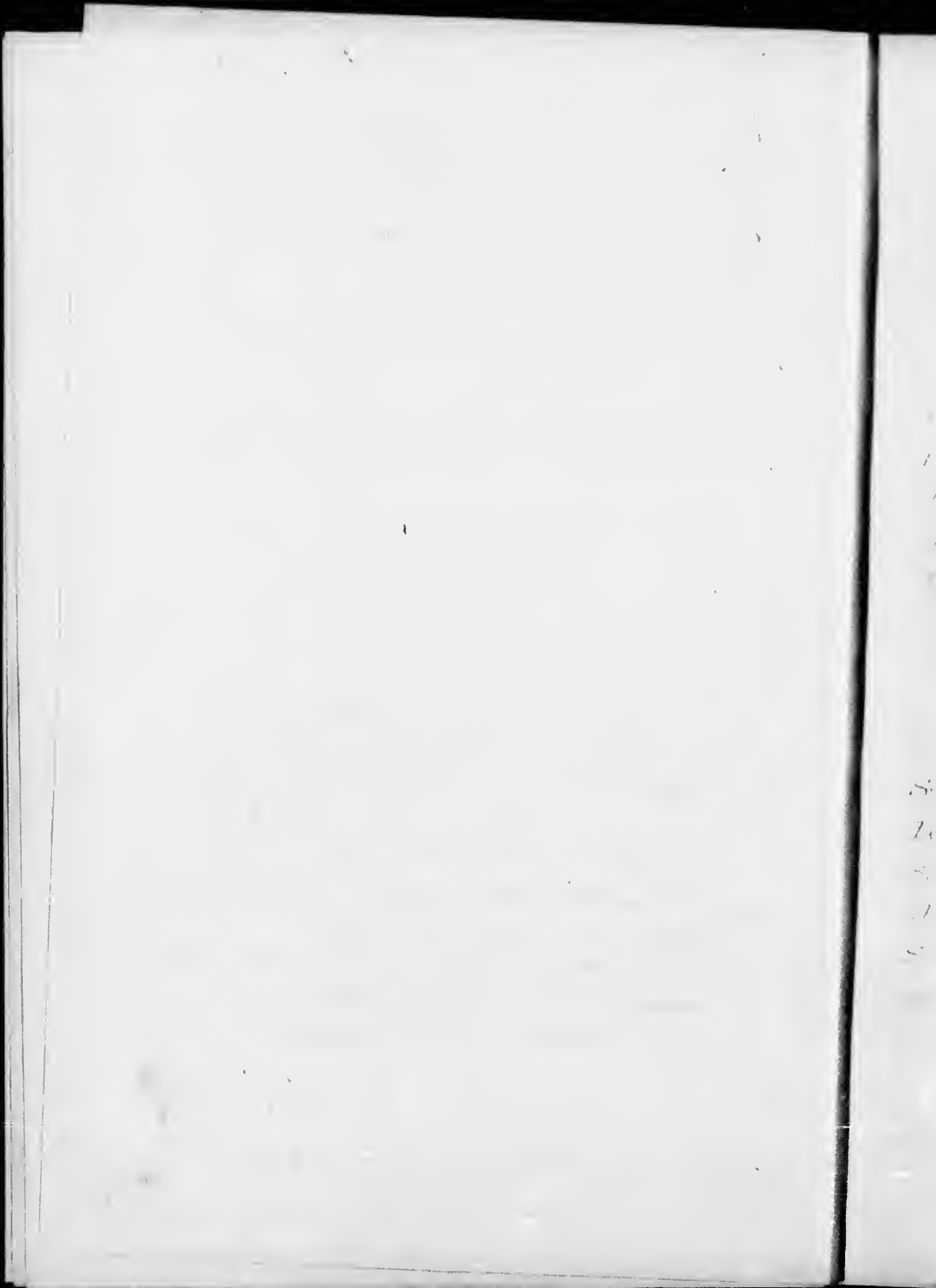
HAS LATELY BEEN TRANSFERRED TO THE

FRASER INSTITUTE BUILDING,

And will in future be open to members of the Society
each day (Sundays excepted), from

9 A. M. TO 6 P. M., AND FROM 7 TO 10 P. M.

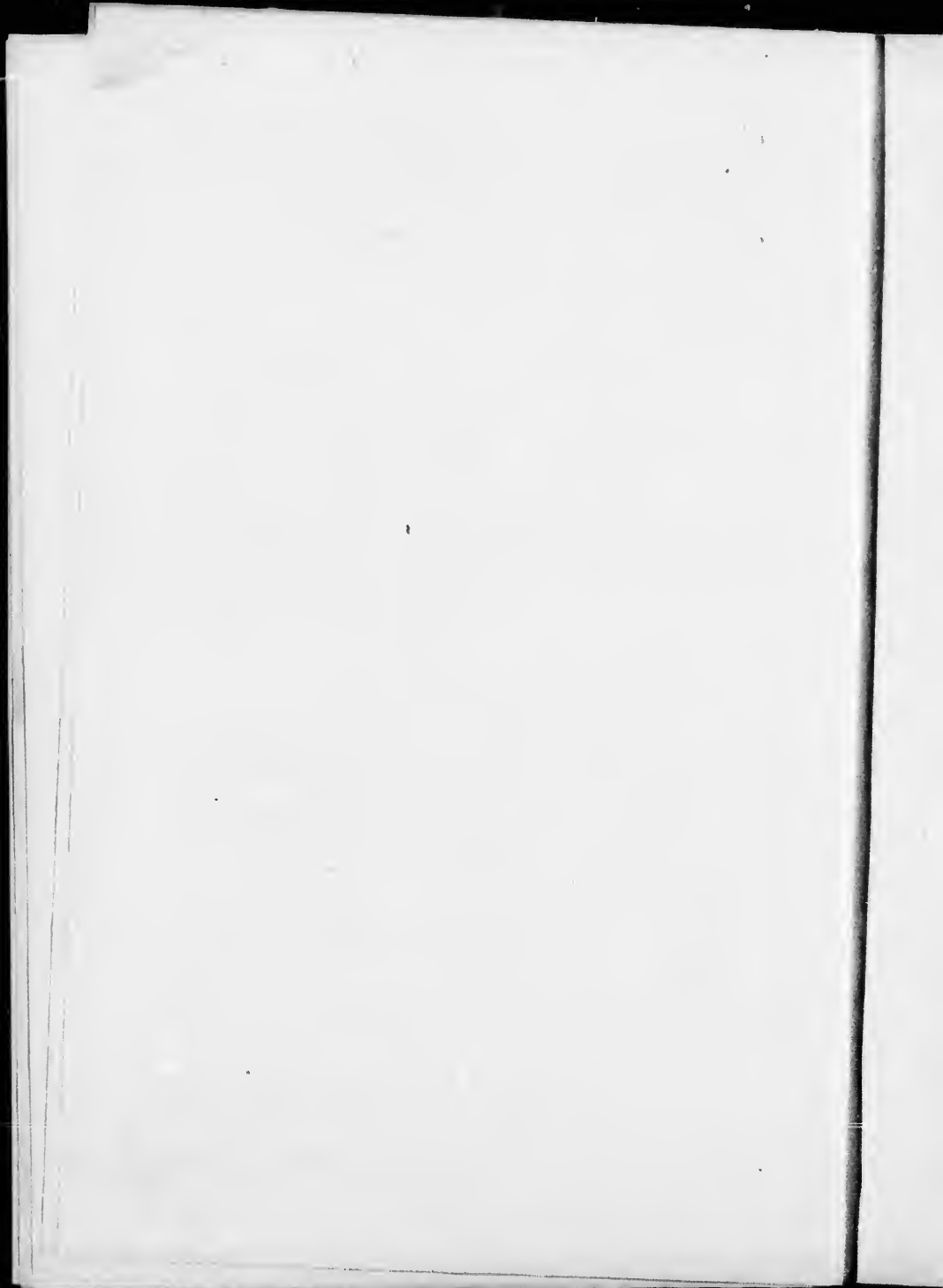
In addition to the Books at the disposal of the members for loan and reference it is intended to keep "The Country Gentleman," "Rural New Yorker," "Prairie Farmer," "Gardeners' Chronicle," "Canadian Horticulturist," "Journal of Agriculture," (in English and French), "Home Farm," "Canadian Live Stock Journal," "Farmers' Advocate," and other publications, regularly on file. The Library Committee hope that the members will avail themselves of the privilèges placed within their reach. Further contributions of Books are respectfully invited from all persons interested in the objects of the Society.

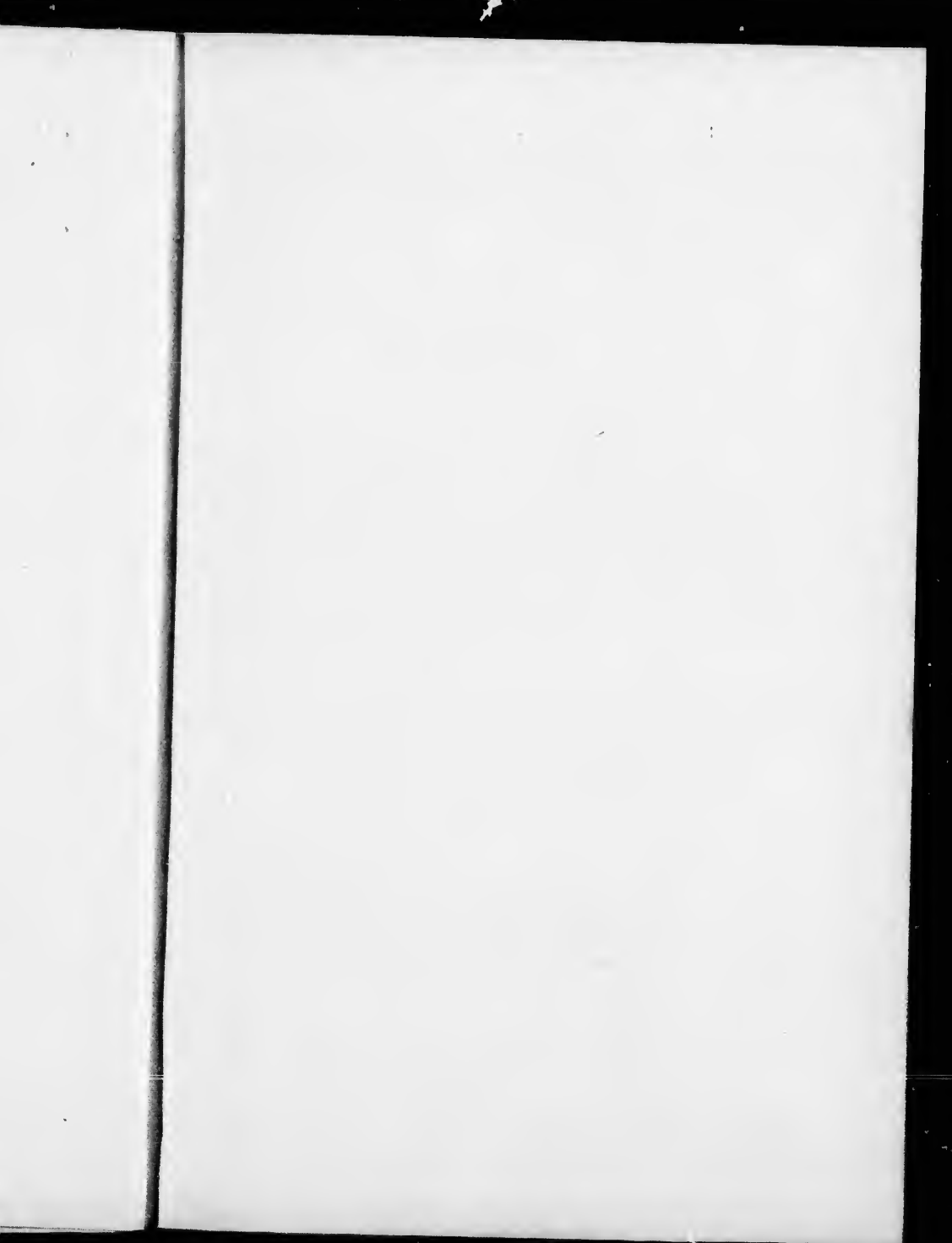


NOTICE.

A meeting of the members interested in Fruit growing will be held on September 14th (the first day of the Exhibition), at 8 p.m., in the Victoria Skating Rink, to hold a discussion on Fruit, etc.

A general meeting of the members of the Montreal Horticultural Society will be held on September 14th 1886, at 8 p.m., in the Victoria Skating Rink, to discuss the advisability of dividing the offices of Secretary and Treasurer, and other business.





NOTICE.

The Board of Directors beg to announce that the eleventh of the series of Reports, containing articles on the cultivation of Fruits, Flowers, Vegetables, &c., suitable to this climate, will be issued at an early date. These Reports contain a large amount of valuable information of the greatest use to all who are in any way interested in matters pertaining to Gardening and Fruit Growing, but especially to those resident in this Province. The want of reliable information on these subjects has been long felt, and very gratifying evidence of the appreciation of the Society's efforts in this direction are being constantly received.

All Subscribers of \$2.50 Annually will, in addition to their Tickets, receive from the Provincial Government a copy of the "Observateur Agricola Journal," published in French and English Monthly, and from the Society a copy of its Report, published Annually.

that the eleventh
the cultivation of
s climate, will be
a large amount
of labor in any
ing and Fruit
business. The
s been long felt,
of the Society's
and.

ere tickets, receive
the Agricultural
and from
...

Rules and Regulations.

1. All specimens *submitted in competition for premiums must be bona fide grown by the competitor*; and, if proved not to be such, the competitor to be disqualified from receiving any premium whatever at the Exhibition.
2. All plants, flowers, fruits and vegetables must be carefully labelled with their proper names. Botanical names to be added as far as possible.
3. In awarding premiums on plants in pots, special reference will be had to the beauty of the specimens, profusion of bloom and evidence of superior cultivation.
4. The term "Dissimilar" shall in every instance be held to mean distinct varieties or species of any plant.
5. Any deviation, more or less, from the exact quantities or numbers specified in the schedule, will disqualify a competitor.
6. All exhibitors in the classes for bouquets must have them of such a size that they can be shown in the vases provided by the Society. No other vases will be permitted to be used.
7. Pot-plants must have been grown in pots at least two months previous to the Exhibition, and have been also the property of the Exhibitor for a similar period. If proved not to be such they will be disqualified.
8. Cards corresponding with the entries will be furnished the exhibitors, who alone will be responsible for the placing of them, and are requested to satisfy themselves that the cards correctly describe the objects exhibited. The Society cannot be responsible for any mistake arising from the non-observance of this or any other rule.
9. In order to allot the space required in each section, all entries must be made in writing, and subscriptions paid not later than the Tuesday previous to the opening of the Exhibition, after which date no entries will be received.
10. The Secretary shall not be *obliged* to receive any entries not made in writing, blank forms for which will be furnished on application. Parties living at a distance may send their entries by mail.
11. All articles to be exhibited for premiums must be in the building by noon on the day of the opening of the Exhibition, at which hour the door will be closed, and no further exhibits admitted. One hour will be given thereafter for Exhibitors to finish placing and ticketing their articles, at the close of which time they must be prepared to leave the building, in order that the Judges may make their awards. Exhibitors are requested to second the efforts of the Association in enforcing this rule.
12. The Judges shall have the discretionary power of withholding premiums, if, in their opinion, the articles exhibited do not merit them; and they are particularly requested to keep this rule in mind.

13. Gratuities may be awarded by the Judges for any new or rare fruits, flowers, plants or other objects of particular interest, for which no special premium has been offered.

14. The Judges shall not be competitors in that class for which they are to award premiums.

15. On recommendation of the Judges, or of a committee appointed by the Society, the Directors may award a diploma for exceptional excellence, if in their opinion it is deemed advisable.

16. The decision of the Judges, as regards the premiums, must be considered final.

17. No individual, except the Judges, will be allowed to touch or handle any fruit, flower, or other article exhibited, and any Exhibitor proved guilty of having tampered with any article on exhibition, or section cards, will be liable to be deprived of all premiums he may have been awarded, at the option of the Committee.

18. While the Judges are making their awards, no person shall be present except parties not in any way interested, who must be appointed by the Directors.

19. Committees will be appointed by the Society to assist in naming fruits and plants about which Exhibitors may be doubtful, but the Society does not assume any responsibility in the matter.

20. The Society will not be responsible for damage done to plants during or after the Exhibition, but all ordinary care will be taken of them.

21. Parties will not be allowed to compete for more than one prize in the same section, and no article which has already been awarded a prize will be entitled to another.

22. The Society will, under no circumstances, pay cartage on plants sent for competition. Cartage, however, may be paid if deemed advisable on plants sent for Exhibition only.

23. All articles exhibited shall remain in the building until the close of the Exhibition, when they will be delivered to the contributors, unless otherwise directed.

24. Any person residing in the Province of Quebec may become a member of the Society on payment of an annual membership fee of two dollars, for which payment he will receive a ticket of admission to the Exhibition for his own use, and four single admission-tickets. He will also receive a copy of any reports published by the Society, and will be permitted the use of any of the books of reference in the Society's library.

25. Any person residing outside the Island of Montreal, but in the Province of Quebec, will be permitted to compete for any of the prizes offered by the Society, on payment of an entrance fee of one dollar. A ticket of admission to the Exhibition for his own use, and four single admission-tickets will be furnished free; also, a copy of Fruit Report.

26. Prize Lists and all other information may be obtained by applying to the Secretary; and all persons interested in Horticulture are invited to contribute articles for exhibition.

HENRY S. EVANS,
Secretary and Treasurer,
(Corner McGill and Foundling Streets.)
MONTREAL.

P. O. Drawer 1976.

Doors of Exhibition Building close at Noon, sharp. Exhibits to be staged, and Exhibitors ready to leave the building at 1 p.m. See Rule 11.

ARTICLES TO BE EXHIBITED.	1st Prize.	2nd Prize.	3rd Prize.
	\$ cts.	\$ cts.	\$ cts.
CLASS A.			
Open to all Members of the Society, whether professional or non-professional.			
PLANTS.			
<i>Pot plants must have been grown in pots at least two months previous to the Exhibition, and have been the property of the Exhibitor for a similar period. If proved not to be such they will be disqualified.</i>			
<i>Exhibitors are required to give notice, at the time of making their entry in section 1, of the size of table required, which will be specially arranged for them as far as practicable.</i>			
1. For the best group of Stove and Greenhouse Plants, at least one-half in bloom, not less than 15 nor more than 25 specimens, arranged for effect, and all distinct species.....	30 00	20 00	10 00
The winner of the first prize in this Section may, if preferred, receive a medal or piece of plate suitably inscribed, of the value of thirty dollars instead of the money.			
2. Stove and Greenhouse Plants, best 12, distinct species, at least one-half in bloom.....	12 00	8 00	4 00
3. Stove and Greenhouse Plants, best 6, distinct species, in bloom.....	6 00	4 00	2 00
4. Stove Plants, best 6 in bloom, distinct species..	6 00	4 00	
5. " " " 6 foliage, " " ...	5 00	4 00	
6. Begonias, best 4 in bloom, distinct kinds.....	4 00	3 00	
7. Begonias, best group of foliage, not less than 12 varieties.....	6 00	4 00	
8. Begonias, best group of Tuberos in bloom, 12 specimens.....	6 00	4 00	
9. Geraniums Zonale, Single, best 9, distinct varieties, in bloom.....	6 00	4 00	
10. Geraniums, Double, best 9, distinct varieties, in bloom.....	6 00	4 00	
11. Geraniums, Bronze, best 6, 3 distinct varieties, in bloom.....	3 00	2 00	
12. Geraniums, Tricolor, best 6, 3 distinct varieties, in bloom.....	3 00	2 00	
13. Fuchsias, best 6, distinct varieties, in bloom.....	6 00	4 00	
14. " " 3, " " " " " "	3 00	2 00	
15. Foreign Ferns, best 15, distinct species.....	8 00	6 00	
16. " " " 10, " " " " " "	5 00	3 00	
17. " " " 6, " " " " " "	3 00	2 00	

No Entries will be received later than the Tuesday previous to the opening of the Exhibition. See Rule 6.

staged, and
11.

1st
2d
3rd
Prize
etc.

10 00
1 00
2 00

opening of

Doors of Exhibition building close at noon, sharp. Exhibits to be staged, and Exhibitors ready to leave the building at 1 p.m. See Rule 11.

ARTICLES TO BE EXHIBITED.		1st Prize.	2nd Prize.
CLASS A, PLANTS—Continued.			
		\$ cts.	cts.
18.	Tree Fern, best specimen.....	5 00	3 64
19.	Native Ferns, best collection in pots.....	5 00	3 00
20.	Lygodium Scandens, best specimen.....	5 00	2 00
21.	Selaginella (Lycopodium) best 4 pots, distinct species.....	3 00	2 00
22.	Asparagus Tenuissimus, best specimen.....	2 00	1 00
23.	Palms, best collection, not less than 6 distinct varieties.....	5 00	4 00
24.	Cycas, best specimen.....	3 00	2 00
25.	Abutilons, best 3 distinct varieties, in bloom.....	2 00	1 00
26.	Roses, best 6 in pots, in bloom.....	5 00	3 00
27.	" " 4 " ".....	3 00	2 00
28.	Gloxinias, best 6.....	3 00	2 00
29.	Bouvardias, best 6, at least 3 varieties, in bloom.....	4 00	2 00
30.	" " 3, distinct varieties, ".....	2 00	1 00
31.	Coleus, best 6, distinct varieties.....	4 00	2 00
32.	" " 3, " ".....	2 00	1 00
33.	Caladiums, best 6, fancy.....	4 00	2 00
34.	" " 3, ".....	2 00	1 00
35.	Carnations, best 6 pots, distinct varieties, in bloom.....	4 00	2 00
36.	" " 3 " " " ".....	2 00	1 00
37.	Hanging-Basket; frame of basket not to exceed 14 inches in diameter.....	3 00	2 00
38.	Vase of Plants, best, not more than 16 in. in diam.....	3 00	2 00
39.	For the best 6 Plants for Table Decoration; size of pots not to exceed 6 inches. Ferns and Soft-wooded Plants excluded.....	4 00	3 00
CUT BLOOM.			
<i>Trays and Vials will be provided by the Society, in which Cut Bloom must be exhibited.</i>			
40.	Gladioli, best 12 spikes.....	4 00	2 00
41.	" " 6 ".....	2 00	1 00
42.	Hollyhocks, best 6 blooms, dissimilar.....	2 00	1 00
43.	Dahlias, best 24, distinct varieties.....	3 00	3 00
44.	" " 12, " ".....	3 00	2 00
45.	" Pompon, best 12 distinct varieties.....	3 00	2 00

No Entries will be received later than on Thursday previous to the opening of the Exhibition. See Rule 11.

Doors of Exhibition Building close at Noon, sharp. Exhibits to be staged, and Exhibitors ready to leave the building at 1 pm. See Rule 11.

ARTICLES TO BE EXHIBITED.	1st Prize.	2nd Prize.	3rd Prize.
CLASS A, CUT BLOOM--Continued.			
46. Dahlias, Single, best 6 blooms, dissimilar.....	3 00	2 00	
47. Asters, best 24 blooms, dissimilar.....	3 00	2 00	
48. " " 12 " "	2 00	1 00	
49. Zinnia, best collection, not to exceed 24 varieties.	3 00	2 00	
50. " " 12 Blooms.....	1 00	0 75	
51. Dianthus, best collection.....	3 00	2 00	
52. Phlox, Drummond, best collection, 3 trusses of each.....	3 00	2 00	
53. Perennial Phlox, best collection.....	3 00	2 00	
54. Verbenas, best 12 blooms, dissimilar.....	3 00	2 00	
55. " " 6 " "	2 00	1 00	
56. Pansies, " 12 " "	3 00	2 00	
57. " " 6 " "	2 00	1 00	
58. Petunias, best collection, single, not more than 18 distinct varieties.....	3 00	2 00	
59. Petunias, best collection, double, not more than 12 distinct varieties.....	3 00	2 00	
60. Annuals, best collection.....	4 00	3 00	
61. Immortelles, best collection, growth of 1886.....	2 00	1 00	
62. Roses, Hybrid perpetual, best 6 blooms, named, dissimilar.....	3 00	2 00	
63. Roses, Tea or Noisette, best 6 blooms, named.....	3 00	2 00	
SPECIAL PRIZES.			
64. Best Growing Model of a Flower Bed, not to exceed 4 1/2 feet in diameter.....	5 00		
65. Best collection Native Tree Seeds, named.....	5 00	3 00	
FLORAL DESIGNS.			
66. For the best Floral Design for Dinner or Supper Table--no Fruit to be used in its construction. }	5 00	4 00	
CLASS A--BOUQUETS.			
<i>All Exhibitors in the classes for Bouquets must exhibit them in the vases provided by the Society. No other vases will be permitted to be used.</i>			
67. Bouquets, best 4, Party.....	2 00	2 00	
68. " best 4, Corsage.....	3 00	2 00	
69. Bouquet, best table.....	4 00	2 00	1 00

No Entries will be received later than the Tuesday previous to the opening of the Exhibition. See Rule 6.

Doors of Exhibition Building close at Noon, sharp. Exhibits to be staged, and Exhibitors ready to leave the building at 1 p.m. See Rule 11.

nd ze.	3rd Prize.	ARTICLES TO BE EXHIBITED.	1st Prize.	2nd Prize.	3rd Prize.
50	8 cts.	CLASS A—BOUQUETS—Continued.	8 cts.	8 cts.	8 cts.
00		<i>Only gentlemen's gardeners or amateurs will be allowed to compete in the two following sections:—</i>			
00		<i>No entries will be received from Florists or persons growing Plants or Flowers for sale.</i>			
75		70. Bouquet, best table.....	2 00	1 00	0 50
00		71. " " hand.....	2 00	1 00	0 50
00		<i>In awarding prizes for Hand and Table Bouquets, the following points of excellence will be considered as of first importance:</i>			
00		<i>Composition, with regard to grace and elegance; quality of flowers; contrast of colors; sufficiency of foliage. Size will not be considered a merit, and over-size will be considered a defect.</i>			
00		<i>The use of paper round the bottom of any Bouquet as a bordering will disqualify.</i>			
00		CLASS B—PLANTS.			
00		AMATEUR DEPARTMENT.			
00		RULE FOR FLOWERS AND PLANTS.			
00		<i>Competitors for the following prizes must be actual growers, as well as owners, of the flowers shown in competition. It is also understood that they must not be habitual growers of flowers for selling purposes. In the event of any dispute as to the interpretation of the rule, the matter is to be referred to the Board of Directors, whose decision on all points shall be final.</i>			
1 00		<i>Pot Plants must have been grown in pots at least two months previous to the Exhibition, and have been the property of the Exhibitor for a similar period. If proved not to be such, they will be disqualified.</i>			
2 00		72. Plants, best 6, in bloom.....	4 00	2 00	
00		73. " " 4, "	3 00	1 50	
00		74. " " 2, "	1 50	1 00	
00		75. Plant, best single specimen.....	1 00	0 75	
00		76. Begonias, best 2, in bloom.....	2 00	1 00	
00		77. " " 1, "	1 00	0 50	
00		78. Coleus, best 2.....	2 00	1 00	
00		79. " " 1.....	1 00	0 75	
2 00		80. Fuchsias, best 3, in bloom.....	2 00	1 50	
00		81. " " 2, "	1 50	1 00	
2 00		82. " " 1, "	1 00	0 75	

No Entries will be received later than the Tuesday previous to the opening of the Exhibition. See Rule 9.

Montreal Horticultural Society

—AND—

Fruit Growers' Association of the Province of Quebec.

SPECIAL PRIZES OFFERED BY MEMBERS,

Supplemented by the Society.

The following Sections will be competed for at the Annual Show in September, 1886:—

SECTION 239.

For the best collection of Orchids, presented by Mr. Gilman Cheney \$20 00

The Judges shall have the discretionary power of withholding the premium in the above Section, if in their opinion it is not merited, or the competition is insufficient.

SECTION 240.

Dracanas, Collection, a First Prize, presented by Mr. J. H. Joseph 5 00
A Second Prize, presented by Mr. E. J. Maxwell..... 2 05

SECTION 241.

Crotons, Collection, a First Prize, presented by Mr. J. H. Joseph... 5 00
A Second Prize, presented by Mr. E. J. Maxwell..... 2 50

SECTION 242.

For the best and heaviest bunch of Grapes grown under glass,
A First Prize, presented by Mr. G. Cheney..... 25 00
For the second best bunch, a Second Prize offered by the Society 5 00
“ third “ “ Third “ “ 3 00

The bunch winning the first prize becomes the property of the gentleman presenting the prize.

In awarding the above prizes, the award will be by points, Quality being a first consideration. The winner of the first prize may, at his option, select a piece of plate of a value not exceeding \$25.00, which will be suitably engraved.

~~For~~ The varieties known as White Nice and Assyrian, are excluded from all competition.

MID-SUMMER PRIZES.

For the Best kept Front Garden Plot, size not to exceed 25 by 30 feet, attached to a house whose rental, without taxes, does not exceed \$240 per annum.

A First Prize, presented by Mr. Wm. Evans..... 10 00
For the second best, a Second Prize, presented by Mr. J. B. Cartwright..... 5 00
For the third best, a Third Prize, presented by Mr. J. F. Copperthwaite..... 4 00

The Mid-Summer Prizes are open only to Amateurs, who must in all cases have themselves planted and cared for the plot of ground competing. Entries must be made not later than 5th July next, and the Judges may make their examinations at any date between the 10th and 24th of the same month. *Entries in all cases to be made in writing, at the Secretary's Office, 93 McGill Street.*

Prizes offered in Circular issued in January, 1886, are hereby cancelled.

Society

ce of Quebec.

MEMBERS,

e Annual Show in

han Cheney \$20 00
witholding
not merited,

H. Joseph 5 00
..... 2 05

H. Joseph.. 5 00
..... 2 50

nder glass,
..... 25 00
the Society 5 00
" 3 00

erty of the gentle-

Quality being
his option,
which will be

rian, are ex-

ceed 25 by
thout taxes,

..... 10 00

by Mr. J. B. 5 00

y Mr. J. F. 4 00

s, who must in all
ground competing,
and the Judges may
and 24th of the same
Secretary's Office, 93

erely cancelled.

MID-WINTER PRIZES.

Special Prize, offered by Mr. W. R. Elmhurst for the best preserved bunch of Grapes, any variety, grown in a cold vinery, (so called) in or around Montreal, the bunch to weigh not less than one pound when exhibited, and to have been preserved by the grower on his own premises. First Prize of..... \$15 00

For the second best Bunch grown and exhibited under the same conditions, and not to weigh less than half a pound, a Second Prize of..... 10 00

Competitors for the above Prizes will require to exhibit their fruit on the 15th January, 1887. They will also require to prepare a true statement in writing to which their signature shall be attached, as to the mode used to preserve the fruit, before they shall be qualified to compete.

NOTE.—The rules observed in awarding prizes at the Annual Show will be observed in awarding the above.

CHRYSANTHEMUM SHOW,

To take place on or about the 10th November, 1886.

SECTION 1.

Chrysanthemums, 12 distinct varieties, to be shown in pots not more than 10 inches in diameter.

A First Prize, presented by Mr. S. S. Bain.....\$20 00
A Second " " " Dr. T. Sterry Hunt 10 00
A Third " " " Mr. C. S. J. Phillips 5 00

Competitors for the above Prizes must furnish in writing a description of the mode of cultivation pursued by them, properly signed, for the information of the Society, to be published or not, as deemed advisable. Special preference will be given to *new varieties* in awarding the above prizes.

SECTION 2.

Chrysanthemums, 12 varieties, 1st Prize.....\$10 00
" " 2nd " 6 00
" " 3rd " 4 00

SECTION 3.

Chrysanthemums, 6 Japanese, 1st Prize.....\$5 00
" " 2nd " 3 00
" " 3rd " 2 00

SECTION 4.

Chrysanthemums, 6 Daisy Pompon, 1st Prize.....\$5 00
" " 2nd " 3 00
" " 3rd " 2 00

SECTION 5.

Open only to Amateurs.

Chrysanthemums, any variety, 1st Prize.....\$1 00
" " 2nd " 3 00
" " 3rd " 2 00

SECTION 6.

Display of Cut Chrysanthemums. Exhibitors to provide what is necessary to exhibit them properly, 1st Prize.....\$3 00
Second Prize..... 2 00
Third Prize..... 1 00

Doors of Exhibition Building close at Noon, sharp. Exhibits to be staged, and Exhibitors ready to leave the building at 1 p.m. See Rule 11.

ARTICLES TO BE EXHIBITED.	1st Prize.		2nd Prize.	
	§	cts.	§	cts.
CLASS B.				
AMATEUR DEPARTMENT—Continued				
83. Geraniums, best 4, in bloom.....		3 00		2 00
84. " " 2, "		2 00		1 00
85. Roses, best 2, in bloom.....		2 00		1 00
86. " " 1, "		1 00		0 50
87. Ferns, best collection, Foreign.....		2 00		1 00
88. " " " Native.....		2 00		1 00
89. Selaginella (Lycopodium), best 2.....		1 50		1 00
90. Foliage Plants, best 4, dissimilar, (Coleus excluded)		3 00		2 00
91. Hydrangea, best, in bloom.....		2 00		1 00
92. Oleander, " "		2 00		1 00
93. Abutilon, " "		1 00		0 75
94. Heliotrope, " "		1 00		0 75
95. Plants, best vase of.....		2 00		1 00
96. Hanging-Basket, best, frame of basket not to exceed 14 inches in diameter.....		2 00		1 00
97. Carnations, best 3, in pots, in bloom.....		2 00		1 00
98. " " 2, " "		1 50		0 75
99. " " 1, " "		1 00		0 50
100. Bouvardia, best, "		1 00		0 75
101. Petunias " 2, " " double.....		1 50		1 00
102. " " 2, " " single.....		1 50		1 00
103. Mignonette, " 2, " "		1 00		0 75
104. Balsams, " 2, " "		1 00		0 75
105. Cockscombs, best 2 pots.....		1 50		1 00
106. Ivy, best.....		2 00		1 00
CUT BLOOM, BOUQUETS, &c.				
<i>Trays and Vials will be provided by the Society, in which Cut Bloom must be exhibited.</i>				
107. Cut Flowers, best collection of.....		3 00		2 00
108. Dahlias, best 6 blooms, dissimilar.....		2 00		1 00
109. Gladioli, best 6 spikes, "		2 00		1 00
110. Pansies, best 12 blooms dissimilar.....		2 00		1 00
111. " " 6 " "		1 00		0 50
112. Verbenas, best 12 " "		2 00		1 00

No Entries will be received later than the Tuesday previous to the opening of the Exhibition. See Rule 9.

Doors of Exhibition Building close at Noon, sharp. Exhibits to be staged, and Exhibitors ready to leave the building at 1 p.m. See Rule 11.

ARTICLES TO BE EXHIBITED.	1st Prize.	2nd Prize.	3rd Prize.
CLASS B.—Amateur Department.	# cts.	# cts.	# cts.
CUT BLOCS, BOUQUETS, &c.—Continued			
113. Verbenas, best 6 blooms dishfullar.....	1 00	0 50	
114. Petunias, double, best 6 blooms "	1 50	1 00	
115. " single, " 6 " "	1 00	0 75	
116. Zinnias, " 12 " "	1 00	0 75	
117. Asters, " collection.....	1 50	1 00	
118. Phlox, Drummondii, best 12 spikes.....	1 00	0 75	
119. Bouquet, best hand.....	2 00	1 00	
120. " " table.....	3 00	2 00	
121. Best and most tastefully arranged Basket of Cut Flowers, not more than 12 inches in diameter. }	3 00	2 00	
CLASS C.			
FRUITS.			
SPECIAL COUNTY PRIZE.			
<i>A Committee will be appointed by the Society to assist in naming Fruits about which Exhibitors may be doubtful, but the Society does not assume any responsibility in the matter.</i>			
The commercial value of the Fruits exhibited in the two following Sections, will be considered by the Judges in awarding the Prizes.			
<i>Exhibitors are specially cautioned against exhibiting more than one plate of the same variety in any collection, and each must be named. All apples only locally known should, as far as possible, have a statement of their probable origin written on the card with the name. The Secretary may receive an entry from more than one person in the same County, but only one prize will be awarded, which will be given to the best collection on Exhibition grown within the limits of the County. Crab Apples will not be admitted in Collections of apples, except in the case of County Collections.</i>			
122. For the best collection of Apples, exhibited by and grown within the limits of the County competing (open to any County in the Province of Quebec,) 5 specimens of each variety.....	10 00 1st Prize	3 00 2nd Prize	20 00 3rd Prize
123. Apples, best collection, open to the Province of Quebec; must be exhibited by the grower, 5 specimens of each variety.....	12 00	8 00	4 00

No Entries will be received later than the Tuesday previous to the opening of the Exhibition. See Rule 9.

Doors of Exhibition Building close at Noon, sharp. Exhibits to be stacked, and Exhibitors ready to leave the building at 1 p. m. See Rule 11.

ARTICLES TO BE EXHIBITED.	1st	2nd	3rd
	Prize.	Prize.	Prize.
	¢ cts.	¢ cts.	¢ cts.
CLASS C. FRUITS—Continued.			
124. Apples, best 12 varieties, 5 of each, named	6 00	4 00	3 00
125. " " 6 " 5 " " "	4 00	3 00	2 00
126. " " 3 " 5 " " "	3 00	2 00	1 00
127. " 5 heaviest.....	2 00	1 50	1 00
128. " best plate of Alexander, 5 specimens.....	1 50	1 00	0 75
129. " " " Duchess 5 "	1 50	1 00	0 75
130. " " " St. Lawrence, 5 "	1 50	1 00	0 75
131. " " " Fameuse, 5 "	1 50	1 00	0 75
132. " " " Strawberry of Montreal, 5 } specimens.....	1 50	1 00	0 75
133. " " " Peach of Montreal, 5 spec- } imens.....	1 50	1 00	0 75
134. " " " Canada Baldwin, 5 specimens.....	1 50	1 00	0 75
135. " " " Wealthy, 5 "	1 50	1 00	0 75
136. " " " Golden Russet, 5 "	1 50	1 00	0 75
137. " " " Pomme Grise, 5 "	1 50	1 00	0 75
138. " " " Decarie, 5 "	1 50	1 00	0 75
139. " " " Fameuse Sucre, 5 "	1 50	1 00	0 75
140. " " " Winter St. Lawrence, 5 } specimens.....	1 50	1 00	0 75
141. " " " Yellow Transparent, 5 } specimens.....	1 50	1 00	0 75
142. " " " Ben Davis, 5 specimens.....	1 50	1 00	0 75
143. Crab Apples, best collection, 10 of each, named...	4 00	3 00	2 00
144. " " " 4 varieties, " " " "	2 00	1 50	1 00
145. " " " plate of any one variety, 10 } specimens.....	1 50	1 00	0 75
146. Pears, best collection, 6 varieties, 3 of each, named	6 00	3 00	2 00
147. Pears, best 3 varieties, 5 specimens of each, named	3 00	2 00	1 00
148. " " plate Fleury Beauty, 5 specimens..	2 00	1 50	1 00
149. " " " any one variety, 5 "	2 00	1 50	1 00
150. Plums, best collection, not less than 3 specimens } of each variety, quality to be first considera- } tion.....	5 00	3 00	2 00
151. Plums, best 2 varieties, not less than 5 specimens.	1 00	2 00	1 00
152. " " plate of, one variety only.....	2 00	1 00	0 50
153. Cranberries, best gallon, domestic.....	2 00	1 00	0 50

No Entries will be received later than the Tuesday previous to the opening of the Exhibition. See Rule 9.

Doors of Exhibition Building close at Noon, sharp. Exhibits to be staged, and Exhibitors ready to leave the building at 1 p.m. See Rule 11.

ARTICLES TO BE EXHIBITED.		1st Price.	2nd Price.	3rd Price.
CLASS C, FRUITS—Continued.		\$ cts.	\$ cts.	\$ cts.
BASKETS OF FRUITS.				
154.	For the best and most tastefully arranged Basket of Fruit for Jossert, size of basket not to be less than 1 foot, and not to exceed 2 feet in any part	1 00	3 00	2 00
155.	For the best and most tastefully arranged Basket of Out-Door Grown Fruits, size of basket to be not less than 1 foot, and not to exceed 2 feet in any part	3 00	2 00	1 00
OUT-DOOR GRAPES.				
156.	Grapes, best collection, named, 2 bunches of each.	12 00	3 00	0 00
157.	Grapes, best 3 varieties White, 2 bunches of each.	3 00	2 00	1 00
158.	" " 3 " Black, 2 " "	3 00	2 00	1 00
159.	" " 3 " Red, 2 " "	3 00	2 00	1 00
160.	" heaviest single bunch, White	1 50	1 00	0 75
161.	" " " Black	1 50	1 00	0 75
162.	" " " Red	1 50	1 00	0 75
GRAPES GROWN UNDER GLASS.				
* Must be correctly named and fully ripened. * The varieties known as the White Nile and Assyrian are excluded from all competition.				
163.	Grapes, best collection, 1 bunch of each	10 00	7 00	5 00
164.	" " 5 bunches, 1 " "	4th 6 00	Prize, 4 00	3 00 2 00
165.	" " 4 " 2 White and 2 Black	6 00	4 00	2 00
166.	" " 2 " Black Hamburg	4 00	3 00	2 00
NECTARINES AND OTHER FRUITS.				
167.	Nectarines, best collection	2 00	1 50	1 00
168.	Peaches, best collection, 3 of each variety	3 00	2 00	1 00
169.	" " best plate of	2 00	1 00	0 50
170.	Peach Tree, best, bearing fruit, in pot	3 00	2 00	1 00
171.	Grapes, best bearing vine, grown in pot	4 00	3 00	2 00
172.	Melon, best Water	2 00	1 50	0 75
173.	" " Musk	4 00	3 00	2 00
174.	" " best new variety	4th 3 00	Prize, 2 00	1 00 1 00
VEGETABLES.				
175.	Cauliflowers, best 3	3 00	2 00	1 00
176.	" " best Head	1 50	1 00	0 75
177.	Cucumbers, best collection, 3 varieties, 2 of each	2 00	1 00	0 50
178.	Cabbages, Summer, best 3, for table	2 00	1 00	0 50

No Entries will be received later than the Tuesday previous to the opening of the Exhibition. See Rule 9.

Doors of Exhibition Building close at Noon, sharp. Exhibits to be staged, and Exhibitors ready to leave the building at 1 p.m. See Rule 11.

ARTICLES TO BE EXHIBITED.	1st Prize.	2nd Prize.	3rd Prize.
CLASS C. VEGETABLES—Continued.			
179. Cabbages, Winter, best 3, for table.....	2 00	1 00	0 50
180. " Red, " 3, "	2 00	1 00	0 50
181. " Savoy, " 3, "	2 00	1 00	0 50
182. Brussels Sprouts, best 2 Stalks.....	2 00	1 00	0 50
183. Borecole (Kale), best 2 stalks.....	1 00	0 75	0 50
184. Celery, White, best 6 heads.....	3 00	2 00	1 00
185. " Red, " 6 "	3 00	2 00	1 00
186. Beets, Turnip, Blood, best 6 for table.....	2 00	1 00	0 50
187. " Long, " " 6 "	2 00	1 00	0 50
188. Turnips, White, best 6, for table.....	2 00	1 00	0 50
189. " Yellow, " 6, "	2 00	1 00	0 50
190. " Swedish, " 6, "	2 00	1 00	0 50
191. Carrots, Early, " 6, "	2 00	1 00	0 50
192. " Late, " 6, "	2 00	1 00	0 50
193. Parsnips, " 6, "	2 00	1 00	0 50
194. Onions, White, " 6, "	1 50	0 75	0 50
195. " Red, " 6, "	1 50	0 75	0 50
196. " Yellow, " 6, "	1 50	0 75	0 50
197. " best assorted collection.....	3 00	2 00	1 00
198. Leeks, best bunch of 1 dozen.....	1 00	0 75	0 50
199. Tomatoes, Red, best plate, 6 specimens, named... ..	2 00	1 00	0 50
200. " " " 3 varieties, 6 " "	3 00	2 00	1 00
201. " Yellow, best plate, 6 " "	1 00	0 75	0 50
202. Egg Plants, best 3, Purple.....	1 00	0 50	
203. " " 3, White.....	1 00	0 50	
204. " " assorted collection.....	2 00	1 00	0 50
205. Peppers, best collection.....	2 00	1 00	0 50
206. Vegetable Marrows, best 2.....	2 00	1 00	0 50
207. Table Squashes, best two varieties, (Mammoth) varieties excluded, 2 of each.....	3 00	2 00	1 00
208. Mammoth Squash, best specimen.....	1 00	0 75	0 50
209. Gourds, best collection of ornamental.....	1 00	0 75	0 50
210. Sweet Corn, best collection, named.....	3 00	2 00	1 00
211. " " " 12 Ears, named.....	1 50	1 00	0 75
212. Mushrooms, best box or tub of, exhibited growing	4 00	3 00	2 00

No Entries will be received later than the Tuesday previous to the opening of the Exhibition. See Rule 9.

Doors of Exhibition Building close at noon, sharp. Exhibits to be staged, and Exhibitors ready to leave the building at 4 p.m. See Rule 11.

ARTICLES TO BE EXHIBITED.	1st Prize.	2nd Prize.	3rd Prize.
CLASS C. VEGETABLES—Continued.			
213. Beans, best plate of, Green.....	1 00	0 75	0 50
214. " " " Butter.....	1 00	0 75	0 50
215. Salsify, best 12 Roots.....	1 00	0 75	0 50
216. Potatoes, best collection of, 8 varieties, not less than 6 of each variety, named.....	4 00	3 00	2 00
217. Potatoes, best 4 varieties, named.....	2 00	1 00	0 50
218. Potatoes, best basket, Red, 1 Peck.....	1 00	0 75	0 50
219. " " " White, 1 Peck.....	1 00	0 75	0 50
220. Jerusalem Artichokes, best plate.....	1 00	0 75	0 50
221. Globe Artichokes, best plate.....	2 00	1 50	1 00
222. Pot and Sweet Herbs, best collection, named.....	3 00	2 00	1 00
223. Vegetables, best basket of assorted, must be contained in basket.....	4 00	3 00	1 00
224. For the best six varieties of vegetables for table use.....	3 00	2 00	1 00

NOTE.—Exhibitors in above section are permitted to make their own selection as to varieties, but are limited to two specimens of each variety of the larger kinds (Cauliflower, Cabbage, Vegetable Marrow, &c.) and six specimens of each variety of the smaller kinds (Tomatoes, Potatoes, Onions, &c.) Peas or Beans, (if shown) 1 Quart, must be in the pod.

CLASS D.—Amateur Department.

FRUIT AND VEGETABLES.

RULES FOR FRUIT AND VEGETABLES.

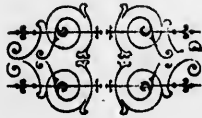
Competitors for the following Prizes are understood to be small growers, principally for their own household use, and to be engaged in other occupations for their living. Farmers who have regular orchards, persons engaged in fruit growing for commercial purposes, market gardeners, &c., are excluded from competing. In the event of any dispute as to the interpretation of this rule, the matter is to be referred to the Board of Directors, whose decision on all points shall be final.

225. Apples, best 3 varieties, dessert, 5 of each.....	3 00	2 00	1 00
226. Pears, best plate of, 5 specimens.....	2 00	1 00	0 75
227. Plums, best plate of, one variety only.....	2 00	1 00	0 75
228. Grapes, best 3 varieties, out door, 2 bunches each.....	4 00	3 00	2 00
229. " " 2 bunches of any kind; Grapes must be fully ripened.....	2 00	1 00	0 75
230. Melon, best Water.....	2 00	1 00	0 75
231. " " Musk, Green or Red Fleshed.....	2 00	1 00	0 75
232. Cauliflowers, best 2.....	2 00	1 00	0 75
233. Cabbages, " 2.....	2 00	1 00	0 75

No Entries will be received later than the Tuesday previous to the opening of the Exhibition. See Rule 9.

Doors of Exhibition Building close at Noon, sharp. Exhibits to be staged, and Exhibitors ready to leave the building at 2 pm. See Rule 11.

ARTICLES TO BE EXHIBITED.	1st Prize.	2nd Prize.	3rd Prize.
CLASS D.—Amateur Department.	\$ Cts.	\$ Cts.	\$ Cts.
FRUIT AND VEGETABLES—Continued.			
234. Vegetables, best 6 varieties, 3 of each, named...	2 00	2 00	1 00
235. Potatoes, " plate of, 6 specimens, " ...	2 00	1 00	0 50
236. Beans, " " in a green state, " ...	1 00	0 75	0 50
237. Tomatoes, " plate of, named.....	1 00	0 75	0 50
238. Sweet Corn, " 12 Ears.....	1 00	0 75	0 50



43
890920c

