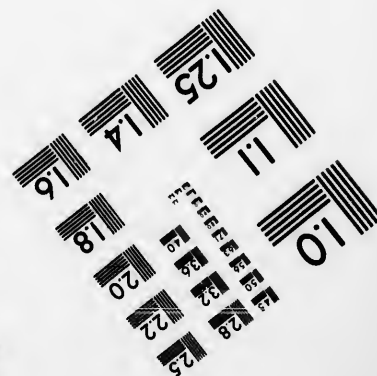
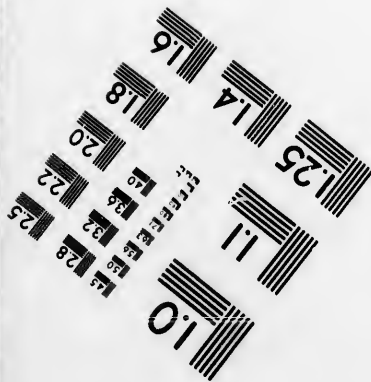
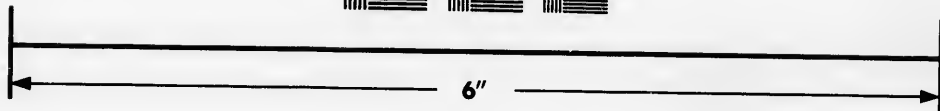
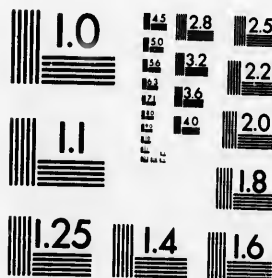


**IMAGE EVALUATION
TEST TARGET (MT-3)**



**Photographic
Sciences
Corporation**

23 WEST MAIN STREET
WEBSTER, N.Y. 14580
(716) 872-4503

**CIHM
Microfiche
Series
(Monographs)**

**ICMH
Collection de
microfiches
(monographies)**



Canadian Institute for Historical Microreproductions / Institut canadien de microreproductions historiques

© 1993

The Institute has attempted to obtain the best original copy available for filming. Features of this copy which may be bibliographically unique, which may alter any of the images in the reproduction, or which may significantly change the usual method of filming, are checked below.

- Coloured covers/
Couverture de couleur
- Covers damaged/
Couverture endommagée
- Covers restored and/or laminated/
Couverture restaurée et/ou pelliculée
- Cover title missing/
Le titre de couverture manque
- Coloured maps/
Cartes géographiques en couleur
- Coloured ink (i.e. other than blue or black)/
Encre de couleur (i.e. autre que bleue ou noire)
- Coloured plates and/or illustrations/
Planches et/ou illustrations en couleur
- Bound with other material/
Relié avec d'autres documents
- Tight binding may cause shadows or distortion
along interior margin/
La reliure serrée peut causer de l'ombre ou de la
distorsion le long de la marge intérieure
- Blank leaves added during restoration may appear
within the text. Whenever possible, these have
been omitted from filming/
Il se peut que certaines pages blanches ajoutées
lors d'une restauration apparaissent dans le texte,
mais, lorsque cela était possible, ces pages n'ont
pas été filmées.

Additional comments: / Pagination is as follows: 1, 6
Commentaires supplémentaires:

This item is filmed at the reduction ratio checked below/
Ce document est filmé au taux de réduction indiqué ci-dessous.

	10X		12X		14X		16X		18X		20X		22X
							/						

and Bibliographic Notes / Notes techniques et bibliographiques

est original
copy which
y alter any
may
ming, are

L'Institut a microfilmé le meilleur exemplaire qu'il lui a été possible de se procurer. Les détails de cet exemplaire qui sont peut-être uniques du point de vue bibliographique, qui peuvent modifier une image reproduite, ou qui peuvent exiger une modification dans la méthode normale de filmage sont indiqués ci-dessous.

- Coloured pages/
Pages de couleur
 - Pages damaged/
Pages endommagées
 - Pages restored and/or laminated/
Pages restaurées et/ou pelliculées
 - Pages discoloured, stained or foxed/
Pages décolorées, tachetées ou piquées
 - Pages detached/
Pages détachées
 - Showthrough/
Transparence
 - Quality of print varies/
Qualité inégale de l'impression
 - Continuous pagination/
Pagination continue
 - Includes index(es)/
Comprend un (des) index
- Title on header taken from: /
Le titre de l'en-tête provient:
- Title page of issue/
Page de titre de la livraison
 - Caption of issue/
Titre de départ de la livraison
 - Masthead/
Générique (périodiques) de la livraison

lack)/
ou noire)

stortion

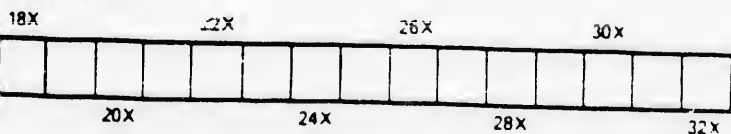
e ou de la

may appear
ese have

ajoutées
s le texte,
es n'ont

agination is as follows: 1, 6, 5, 2-4, 7-8 p.

ked below/
ndiqué ci-dessous.



The copy filmed here has been reproduced thanks to the generosity of:

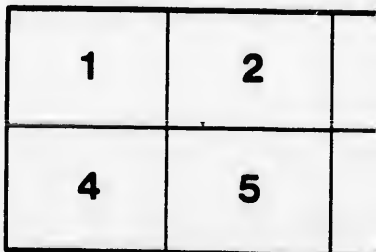
Library of the National
Archives of Canada

The images appearing here are the best quality possible considering the condition and legibility of the original copy and in keeping with the filming contract specifications.

Original copies in printed paper covers are filmed beginning with the front cover and ending on the last page with a printed or illustrated impression, or the back cover when appropriate. All other original copies are filmed beginning on the first page with a printed or illustrated impression, and ending on the last page with a printed or illustrated impression.

The last recorded frame on each microfiche shall contain the symbol \rightarrow (meaning "CONTINUED"), or the symbol ∇ (meaning "END"), whichever applies.

Maps, plates, charts, etc., may be filmed at different reduction ratios. Those too large to be entirely included in one exposure are filmed beginning in the upper left hand corner, left to right and top to bottom, as many frames as required. The following diagrams illustrate the method:



L'ex
géné

Les i
plus
de la
conf
filma

Les r
papier
par l
dern
d'im
piet.
origi
prem
d'im
la de
emp

Un d
derni
cas: l
symp

Les c
filmé
Lorsq
repro
de l'a
et de
d'ima
illustr

ced thanks

L'exemplaire filmé fut reproduit grâce à la générosité de:

La bibliothèque des Archives nationales du Canada

t quality legibility in the

Les images suivantes ont été reproduites avec le plus grand soin, compte tenu de la condition et de la netteté de l'exemplaire filmé, et en conformité avec les conditions du contrat de filmage.

are filmed ing on and impres- te. All ing on the impres- a printed

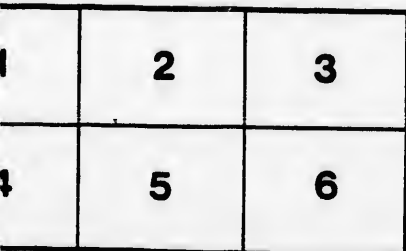
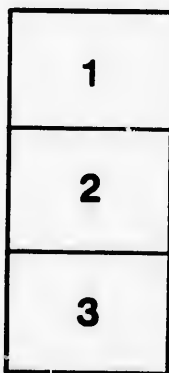
Les exemplaires originaux dont la couverture en papier est imprimée sont filmés en commençant par le premier plat et en terminant soit par la dernière page qui comporte une empreinte d'impression ou d'illustration, soit par le second plat, selon le cas. Tous les autres exemplaires originaux sont filmés en commençant par la première page qui comporte une empreinte d'impression ou d'illustration et en terminant par la dernière page qui comporte une telle empreinte.

iche "CON- END").

Un des symboles suivants apparaîtra sur la dernière image de chaque microfiche, selon le cas: le symbole → signifie "A SUIVRE", le symbole ∇ signifie "FIN".

d at ge to be ned left to s as te the

Les cartes, planches, tableaux, etc., peuvent être filmés à des taux de réduction différents. Lorsque le document est trop grand pour être reproduit en un seul cliché, il est filmé à partir de l'angle supérieur gauche, de gauche à droite, et de haut en bas, en prenant le nombre d'images nécessaire. Les diagrammes suivants illustrent la méthode.



ASSESSMEN

Son

E



INCORPORAT
ACT, ONT

Aim

The Son
is both
Society.

Its mott

Fidelity

Fidelity

Bible.

Fidelity

home.

ASSESSMENT SYSTEM

Sons of England

BENEFIT SOCIETY

ESTABLISHED 1874



INCORPORATED UNDER THE INSURANCE CORPORATION
ACT, ONTARIO, 1892, LICENSED IN THE PROV-
INCE OF QUEBEC, 1898.

Aims and Objects.

The Sons of England Benefit Society
is both a National and Fraternal
Society.

Its motto is "Fidelity."

Fidelity to the British Constitution.

Fidelity to the teachings of the Holy
Bible.

Fidelity to the duties of an English
Home.

085010 0

In the Sick and Funeral benefits which c
only— ber of a
18 to 30 years, per week.... 10c. and in f
30 to 45 " " " 13c. great E
45 to 50 " " " 15c. leading :

In the Beneficiary Department only— The ap
Subordinate Lodge General Fund Departm
dues, and Supreme Grand Lodge Capi- be dispo
tation Tax, per month, 25c. These m
their Ben
Subordin

Benefits After Death.

At the death of a financial member for the
who is in good standing in the Society members
and participates in Sick and Funeral the sam
Benefits, there is payable through his Lodge, a
Subordinate Lodge to his appointed work and
nominee or heirs a *funeral benefit* of our great
one hundred dollars. To an ordinary All acc
financial member who is also a benefici- members
ary member, there is also payable a and funer
beneficiary payment of \$500, \$1,000, than acco
\$1,500 or \$2,000 according to his policy. graduated
Beneficiary Benefits accrue as soon increase t
as the member shall have received his 18 to 30 y
Beneficiary Certificate. 30 to 45..
45 to 50..

How to form New Lodges.

Any body of twelve or more English- All acc
men or descendants as above specified. membersh
who desire to become members of this sick and
Society and to form a lodge, will com- enter the I
municate to the Supreme Grand Secre- shall pay a
tary or the District Officer and procure 18 to 45 ye
application forms and all information Charter
necessary to the formation of a lodge. be thee do
Weekly su

In the formation of new lodges a be thee do
uniform rate of initiation is charged. Weekly su
viz : \$3.00. Charters are kept open for the next su
one month. The cost of necessary. The sub:
supplies, including charter, will depend bers shall b
upon the number of charter members. scales :

0 910230

Funeral benefits which come through becoming a member of a Lodge of the Sons of England, and in furthering the interests of the great Empire of which Canada is so leading a daughter.

- 10c.
- 13c.
- 15c.

Department only— The application fees for the Beneficiary General Fund Department will remain the same and be disposed of exactly as heretofore.

Death.

These members will, in addition to their Beneficiary dues, also pay to the Subordinate Lodge 25 cents per month for the general fund. All financial members will thus stand upon exactly the same footing in the Subordinate Lodge, and in this thorough union in their appointed work and management will be found our greatest welfare.

All accepted candidates for financial membership, who shall enter for sick and funeral benefits, shall pay not less than according to the undermentioned graduated scale, but lodges may increase the same if they so desire:

18 to 30 years.....	\$3 00
30 to 45.....	4 00
45 to 50.....	7 00

Lodges.

All accepted candidates for financial membership, who shall not enter for sick and funeral benefits, and shall enter the Beneficiary Department only, shall pay an initiation fee as follows:

18 to 45 years	\$3 00
----------------------	--------

Charter members' initiation fees shall be three dollars for financial members. Weekly subscriptions the same as in the next succeeding clause.

The subscription of financial members shall be according to the following scales:

of a lodge.
 new lodges a
 is charged.
 kept open for
 f necessary
 will depend
 er members.

As the best means of attaining these objects this Society has been formed, to unite its members together, and thus attain a power for good which individually they could not obtain.

Advantages.

Men are educated in its lodges.

In the principles of worthy manhood

In the duties which they owe to their Queen and Country, and the privileges they enjoy under British Rule.

In brotherly love and in the happiness of giving benevolence and aid to those in distress.

In forethought by preparing for time when sickness may interfere with their daily work.

In the duty of providing for their family after death.

In addition to these objects of practical advantage there is the pleasure of joining in social enjoyment with brothers of the same blood and kinship, met for the same patriotic purposes, glorying in the great history of our Nation and united for its well-being and advancement.

Every lodge of the Sons of England is a centre of National enthusiasm, and offers a loyal and patriotic association which is obtainable in no other society.

Membership.

Membership in the Society is open to all who were either themselves born in or are descendants either through the

f attaining these...er's side or through their mother's
 has been formed... of ancestors born in England.
 s together. angles, Isle of Mann, or the Channel
 for good which... It is a further requisite to mem-
 d not obtain. ship that applicants shall pass a
 dical examination, certifying they
 in sound health, and be of good
 ral character.

ages.

its lodges.

worthy manhood

hey owe to their
 nd the privileges
 h Rule.

nd in the happi
 ence and aid to

preparing for
 y interfere with

riding for their

bjects of practice

the pleasure of

ent with brother

nd kinship, and

otic purposes

history of our

its well-being

ons of England

enthusiasm, am

tic association

o other society

hip.

ociety is open

selves born in

r through the

Government.

The government of the Order is vest-
 in a Supreme Grand Lodge, and in
 subordinate Lodges. The Supreme
 and Lodge is composed of delegates
 elected annually by the Subordinate
 dges, and is supported financially by
 per capita tax payable quarterly.

The Officers of the Supreme Grand
 dge are elected annually.

The Subordinate Lodges are support-
 by initiation fees and weekly dues.

ey have control of their own funds,
 et their own officers, pay the sick

enefits, make their own by laws (sub-
 to the approval of the Supreme

and Lodge), and in every way con-
 trol their business to suit the majority

of their members. Members meet in
 their lodge rooms at stated times in

aternal intercourse, learning each
 other's wants and giving words of en-
 thusiasm, amusement and good cheer.

The moment the lodge room is enter-
 ed all distinctions are lost sight of, and

we meet on one common level. By this

constant association and intercourse an
 amount of regard and interest is creat-

ed in each other, which has been proved
 to be the good work which has been

accomplished.

Benefits During Lifetime

The financial benefits to members during lifetime are threefold.

- 1st. Free medical attendance and medicine the moment you are accepted as a member.
- 2nd. In case of sickness, benefits at the rate of three dollars per week for 13 weeks, and at the rate of one dollar and fifty cents per week for 26 weeks.
- 3rd. Funeral benefits on the death of a wife.

The Option.

An important change made at Grand Lodge, 1898, was that of an "option" whereby members of the Order can take either "Sick and Funeral Benefits," or "Beneficiary Insurance," they may select at the time of initiation, being as follows:

The initiation fees for members entering the Lodge for Sick and Funeral Benefits only will remain the same at present. Those entering for Beneficiary only will pay an initiation fee of \$3, of which 50 cents will be retained by the Subordinate Lodge. The Society now offers to all persons interested in fraternal societies just what they want. If they desire Sick and Funeral Benefits only, they can have them. If they wish insurance only they can obtain it, upon equal terms with any other fraternal society but with the additional and inestimable advantage of joining in the enjoyment of the patriotic and national privilege

ing Lifetim

benefits to members
threefold.

attendance at
nt you are accept

sickness, benefits
ollars per week

rate of one doll
week for 26 week

its on the death

tion.

ge made at Gran

t of an "option

of the Order ca

nd Funeral Ben

Insurance." a

at the time

lows:

for members e

ick and Funer

ain the same

ering for Ben

an initiation f

will be registr

ge and \$2.50

ate Lodge.

s to all perso

ocieties just

If they desir

its only, the

wish insuranc

t, upon equa

ternal society

nd inestimabl

he enjoymen

nal privileg

andidates wishing to join existing
will be charged according to age.

The Society's Record.

The first lodge was instituted in the
1874. Since that date over \$200,
has been paid out in sick and
fical benefits.

The Grand Lodge was formed in the
1876 Since that time \$82,000
been paid in Funeral Benefits.

The Beneficiary Department was
lished in the year 1883. Since
\$141,000 has been paid in Bene-
ry claims.

The above figures do not include
the Rose Degree benefits, or other
volent gifts. In round numbers
half a million dollars have been
to members of the Society. All
has been accomplished by mutual
peration.

The Society started in the year 1874
one lodge, to-day there are 220
Seven members constituted
first lodge, at present there are
12,000 names on the lodge rolls.

The first lodge was instituted in
onto, to-day there are lodges in
Africa. Newfoundland, New
swick, Nova Scotia, Prince Ed-
Island, Quebec, Ontario, Mani-
North-West Territories, and
Columbia.

The official Journal of the Society,
"Record," is issued to the
nders every month. In its columns
be found the latest news concern-
the progress of the Society.

8
SONS of England

BENEFIT SOCIETY

ESTABLISHED 1874.

Incorporated under the Insurance
Corporation Act of Ontario,
1892.

Incorporated for Province of Que-
bec, 1898.

Executive Officers, 1898.

E. PARNELL, JR., Esq.,

Supreme Grand President.

BARLOW CUMBERLAND, Esq.,

Past Supreme Grand President.

CHAS. A. HODGETTS, M.D., L.R.C.P.,

Supreme Grand Vice-President.

B. HINCHLIFFE, Esq.,

Supreme Grand Treasurer.

JOHN W. CARTER, Esq.,

Supreme Grand Secretary.

District Deputy Supreme Grand President for

South Africa—**T. N. Dyer, Esq.,** King

William's Town.

Supervisory District Deputy, Winnipeg—**R.**

Canon Coombs, Winnipeg.

Special District Deputy, England—**A. J. Craster,**

Nichol's Building, Play House Yard, Gold

Lane, Barbican, London, E.C., England.

August, 1898.

JOHN W. CARTER,

Supreme Secretary,

Shaftesbury Hall, Toronto.

gland

SOCIETY

D 1874.

ne Insurance
of Ontario,

ince of Que

rs, 1898.

, Esq.,
resident.
D., L.R.C.P.,
ident.

,
urer.
ER, Esq.,
e Grand Secretar
nd President fo
Esq., King

Winnipeg—Re

d—A. J. Craste
se Yard, Gold
, England.

TER,
cretary,
ury Hall, Toront

