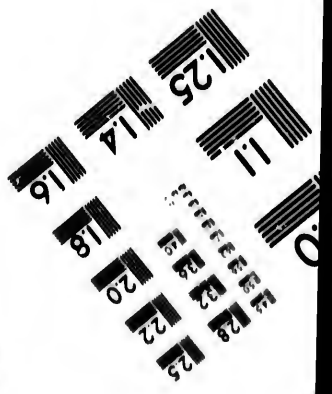
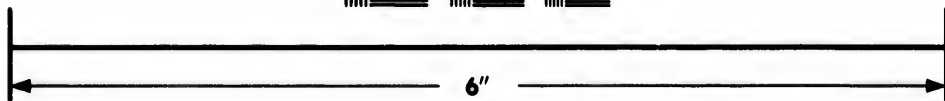
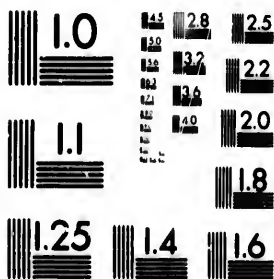


IMAGE EVALUATION TEST TARGET (MT-3)



Photographic
Sciences
Corporation

23 WEST MAIN STREET
WEBSTER, N.Y. 14580
(716) 872-4503

**CIHM/ICMH
Microfiche
Series.**

**CIHM/ICMH
Collection de
microfiches.**



Canadian Institute for Historical Microreproductions / Institut canadien de microreproductions historiques

© 1984

Technical and Bibliographic Notes/Notes techniques et bibliographiques

Institute has attempted to obtain the best copy available for filming. Features of this which may be bibliographically unique, may alter any of the images in the reproduction, or which may significantly change the method of filming, are checked below.

L'Institut a microfilmé le meilleur exemplaire qu'il lui a été possible de se procurer. Les détails de cet exemplaire qui sont peut-être uniques du point de vue bibliographique, qui peuvent modifier une image reproduite, ou qui peuvent exiger une modification dans la méthode normale de filmage sont indiqués ci-dessous.

Coloured covers/
Couverture de couleur

Coloured pages/
Pages de couleur

Covers damaged/
Couverture endommagée

Pages damaged/
Pages endommagées

Covers restored and/or laminated/
Couverture restaurée et/ou pelliculée

Pages restored and/or laminated/
Pages restaurées et/ou pelliculées

Cover title missing/
Titre de couverture manque

Pages discoloured, stained or foxed/
Pages décolorées, tachetées ou piquées

Coloured maps/
Cartes géographiques en couleur

Pages detached/
Pages détachées

Coloured ink (i.e. other than blue or black)/
Encre de couleur (i.e. autre que bleue ou noire)

Showthrough/
Transparence

Coloured plates and/or illustrations/
Planches et/ou illustrations en couleur

Quality of print varies/
Qualité inégale de l'impression

Bound with other material/
Lié avec d'autres documents

Includes supplementary material/
Comprend du matériel supplémentaire

Light binding may cause shadows or distortion along interior margin/
Le liage serré peut causer de l'ombre ou de la distorsion le long de la marge intérieure

Only edition available/
Seule édition disponible

Blank leaves added during restoration may appear within the text. Whenever possible, these have been omitted from filming/
Les pages blanches ajoutées d'une restauration apparaissent dans le texte, mais, lorsque cela était possible, ces pages n'ont pas été filmées.

Pages wholly or partially obscured by errata slips, tissues, etc., have been refilmed to ensure the best possible image/
Les pages totalement ou partiellement obscurcies par un feuillet d'errata, une pelure, etc., ont été filmées à nouveau de façon à obtenir la meilleure image possible.

Additional comments:
Commentaires supplémentaires:

This is filmed at the reduction ratio checked below/
Cet exemplaire est filmé au taux de réduction indiqué ci-dessous.

	14X		18X		22X		26X		30X		<input checked="" type="checkbox"/>	
12X		16X		20X		24X		28X		32X		

The copy filmed here is due to the generosity of

Lib
Ar

The images appearing here are possible considering the condition of the original copy and the terms of the filming contract signed

Original copies in poor condition beginning with the first page with the exception of the last page with the exception of the back cover, or the back of other original copies, or the first page with a picture, and ending on the last page or illustrated impression

The last recorded page shall contain the words "FINISHED" or "TINUED", or the words "FINISHED" whichever applies.

Maps, plates, charts, etc., of different reduction ratios, are entirely included in this volume beginning in the upper right and top to bottom as required. The following method:



The copy filmed here has been reproduced thanks to the generosity of:

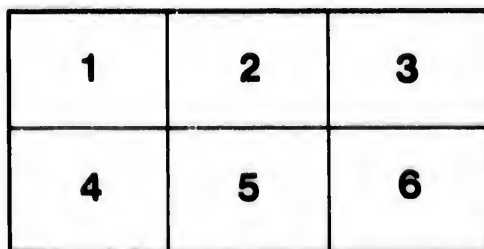
Library of the Public
Archives of Canada

The images appearing here are the best quality possible considering the condition and legibility of the original copy and in keeping with the filming contract specifications.

Original copies in printed paper covers are filmed beginning with the front cover and ending on the last page with a printed or illustrated impression, or the back cover when appropriate. All other original copies are filmed beginning on the first page with a printed or illustrated impression, and ending on the last page with a printed or illustrated impression.

The last recorded frame on each microfiche shall contain the symbol \rightarrow (meaning "CONTINUED"), or the symbol ∇ (meaning "END"), whichever applies.

Maps, plates, charts, etc., may be filmed at different reduction ratios. Those too large to be entirely included in one exposure are filmed beginning in the upper left hand corner, left to right and top to bottom, as many frames as required. The following diagrams illustrate the method:



L'exemplaire filmé fut reproduit grâce à la générosité de:

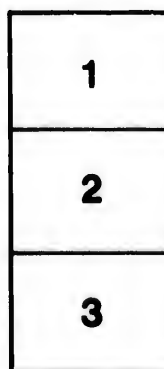
La bibliothèque des Archives
publiques du Canada

Les images suivantes ont été reproduites avec le plus grand soin, compte tenu de la condition et de la netteté de l'exemplaire filmé, et en conformité avec les conditions du contrat de filmage.

Les exemplaires originaux dont la couverture en papier est imprimée sont filmés en commençant par le premier plat et en terminant soit par la dernière page qui comporte une empreinte d'impression ou d'illustration, soit par le second plat, selon le cas. Tous les autres exemplaires originaux sont filmés en commençant par la première page qui comporte une empreinte d'impression ou d'illustration et en terminant par la dernière page qui comporte une telle empreinte.

Un des symboles suivants apparaît sur la dernière image de chaque microfiche, selon le cas: le symbole \rightarrow signifie "A SUIVRE", le symbole ∇ signifie "FIN".

Les cartes, planches, tableaux, etc., peuvent être filmés à des taux de réduction différents. Lorsque le document est trop grand pour être reproduit en un seul cliché, il est filmé à partir de l'angle supérieur gauche, de gauche à droite, et de haut en bas, en prenant le nombre d'images nécessaire. Les diagrammes suivants illustrent la méthode.



91.3
8.7

C A T A L O G U E
 OF
HOUSEHOLD FURNITURE,
 TO BE SOLD,
BY AUCTION,
 AT THE DWELLING HOUSE OF
MR. J. H. DORWIN,
 IMMEDIATELY IN REAR OF THE COLLEGE,
 CORNER OF WALLACE AND QUEEN STREETS,
 ON
THURSDAY NEXT,
 APRIL 30, 1835.

S A L E A T T E N O ' C L O C K .

KITCHEN.

- LOT
- 1. 2 Kitchen Tables,
 - 2. 1 Tin Oven,
 - 3. 1 lot Tin Ware,
 - 4. 7 Smoothing Irons,
 - 5. 1 pair Hand Irons,
 - 6. 3 Tin Cannisters,
 - 7. 1 Bread Basket,
 - 8. 1 Copper Preserve Pan,
 - 9. 1 Coffee Mill,
 - 10. 2 Stone Jars,
 - 11. 1 Copper Tea Kettle,
 - 12. 1 lot Kitchen Chairs,
 - 13. 1 lot Cooking Utensils,
 - 14. 1 Double Stove and Pipes.

DINING-ROOM.

- 15. 1 sett Table Knives and Forks,
- 16. 1 do Dessert do do.
- 17. 1 lot Glassware,

D. W. Green
Moffatt
John
Ben
Clara
Wm
do
...
...
...

18.	✓ 1 lot Crockery,	<i>Odore</i>	8/6			
19.	✓ 1 China Tea Set,	<i>43 items</i>	9/6	2	7	6
20.	✓ 1 do Breakfast Set,	<i>47 items</i>	12/6			
21.	✓ 1 Dinner Set,		4/6			
22.	✓ 1 do do. not complete,	<i>x</i>	1/6			
23.	✓ 1 Britannia Metal Teapot, Sugar Bowl and Milk Cup,		1/6	1		
24.	✓ 1 Cruet Stand and Cruets,		1/6			
25.	✓ 1 pair Britannia Metal Candlesticks,		1/6			
26.	✓ 1 do Silver Edged do.		1/6			
27.	✓ 1 do Snuffers and Tray,		1/6			
28.	✓ 1 Rush Bottom Chairs,		1/6			
29.	✓ 1 Dining Table,		5/6			
30.	✓ 1 Eight Day Time Piece,		1/6			
31.	✓ 1 Carpet Covered Stool,		1/6			
32.	✓ 1 Carpet,	<i>3 yds.</i>	3/6	3	0	0
33.	✓ 1 Backgammon Board and Men,		1/6			
34.	✓ 1 Small Time Piece,		1/6			
35.	✓ 1 Thermometer,		1/6			
36.	✓ 1 lot Chimney Ornaments,		1/6			
37.	✓ 1 Single Stove and Pipes.		1/6			

Clara
J. Macg...
do
do
...
...
...
...
...
...

SITTING-ROOM.

38.	✓ 1 Elegant Mahogany Spring Seat Sofa,		1/6			
39.	✓ 1 Centre Table, Marble Top,		1/6			
40.	✓ 1 Pier Table, Marble Top and Glass,		1/6			
41.	✓ 1 Pier Glass, 18 and 24,		1/6			
42.	✓ 9 Mahogany Chairs, Hair Cloth Seats,		1/6			
43.	✓ 1 pair Mahogany Card Tables,		1/6			
44.	✓ 1 Astral Lamp,		1/6			
45.	✓ 1 Brussels Carpet,	<i>yds.</i>	1/6			
46.	✓ 1 Hearth Rug,		1/6			
47.	✓ 1 Cast Iron Fender,		1/6			
48.	✓ 1 sett Fire Irons,		1/6			
49.	✓ 1 Engraving, Gilt Frame,		1/6			
50.	✓ 1 do do.		1/6			
51.	✓ 1 case containing 34 Drawings.		1/6			

SITTING-ROOM, UP STAIRS.

52.	✓ 1 Sofa,		1/6			
53.	✓ 1 Loo Table,		1/6			
54.	✓ 1 Pembroke Table,		1/6			
55.	✓ 2 Dining Tables, 2 to match,		1/6			
56.	✓ 12 Mahogany Chairs,		1/6			
57.	✓ 1 High Post Bedstead,		1/6	2	2	6
58.	✓ 1 French do.		1/6			
59.	✓ 2 Bureaus,		1/6			
60.	✓ 1 Beaudette,		1/6			
61.	✓ 1 Palliase.		1/6			

Clara
J. Macg...
do
do
...
...
...
...
...

PASSAGE.

- LOT
- 62. 1 Mahogany Table,
- 63. 1 Table Cover,
- 64. 1 Stair Carpet,
- 65. 1 sett Brass Stair Rods,
- 66. 1 Passage Lamp,
- 67. 1 Matt.

*Oliver
Hodges
No
Ho
Hodges
M. H. H.*

1	2/1	
"	1/6/1	6
"	1/18/1	15
"	1/4/2	8
"	3/1/3	
"	3/2/1	

BED-ROOM, NO. 1.

- 68. 1 Wash Hand Stand, Basin and Ewer,
- 69. 1 Toilet Glass,
- 70. 3 Bed-Room Chairs,
- 71. 1 Four Post Bedsteads,
- 72. 1 Feather Bed, Pillows and Bolster,
- 73. 1 Hair Mattress,
- 74. Marseilles Quilts and Blankets, 4
- 75. 1 Carpet.

*G. H. H.
H. H.
H. H.
H. H.
H. H.
H. H.*

1	5/6/1	
"	1/4/6	12 0
50		6 17 6
35		3 16 6
"	2/1	2 11 4

BED-ROOM, NO. 2.

- 76. 6 Rush Bottomed Chairs,
- 77. 1 Arm Chair,
- 78. 1 Mahogany Sofa,
- 79. 1 Mahogany Chest Drawers,
- 80. 1 do do do
- 81. 1 do Book Case,
- 82. 1 Looking Glass, Mahogany Frame,
- 83. 1 Toilet do
- 84. 1 Wash Hand Stand, Basin and Ewer,
- 85. 1 Four Post Bedstead,
- 86. 1 Feather Bed, Pillows and Bolster,
- 87. 1 Hair Mattress,
- 88. 1 Carpet,
- 89. Marseilles Quilts and Blankets.

*Oliver
H. H.
H. H.
H. H.
H. H.
H. H.
H. H.
H. H.
H. H.*

"	3/1	1 14 6
"	1/6	2 6 3
"	1/12	4 10
"	7/12	1 11
"	1/16	
"	5/1	
15	1/1	1 11 6

BED-ROOM, NO. 3.

- 90. 1 Toilet Glass,
- 91. 1 do Table,
- 92. 3 Chairs,
- 93. 1 Four Post Bedstead,
- 94. 1 Feather Bed, Pillows and Bolster,
- 95. 1 Hair Mattress
- 96. Bed Quilts and Blanket,
- 97. 1 Carpet.

*H. H.
H. H.
H. H.
H. H.*

"	3/11	
"	1/1	
"	1/1	
14	1/1	3 4 11

BED-ROOM, NO. 4.

- 98. 1 Single Bedstead
- 99. 1 Mahogany Wash Hand Stand,

*H. H.
H. H.*

"	1/1	
---	-----	--

- 6
- LOT.
 100. 1 Feather Bed, Pillows and Bolster, // // 1
 101. 1 Mattress 23 // // 2
 102. Blankets and Quilts // // // 3
 103. 1 Brass Clock, // // //
 104. 1 Toilet Table, // // //
 105. 1 Carpet, // // //

The Furniture may be viewed the day previous to the Sale.

SALE AT TEN O'CLOCK.

ADAM L. MACNIDER.

Monreal, April 27, 1855.

GAZETTE OFFICE.

100. 1
 101. 1
 102. 1
 103. 1
 104. 1
 105. 1

