

7107  
971-1 Re  
D671

# Dominion Security Company Ltd.

REVELSTOKE, B. C.



PCRTION OF THE CITY OF REVELSTOKE AND  
MOUNT BEGBIE

ALEXANDER McRAE, President

THOS. KILPATRICK, Sec.-Treas.

---

---

## Geographical Position

**R**EVELSTOKE is beautifully situated on the main line of the Canadian Pacific Railway where it crosses the Columbia River valley between the Selkirk and Gold ranges of mountains. This splendid mountain environment and valley and river forming a strong contrast, together with its accessibility from all points, makes it the natural centre of tourist travel from which all surrounding scenic attractions, north, south, east and west, can be quickly and comfortably reached. It is over 300 miles between the lines of railway north and south of Revelstoke, and by referring to the key map attached it will be readily seen that Revelstoke occupies a natural and central location between these lines. It also shows the immense territory tributary to this point, situated as it is on the Columbia River, which is navigable north and south, and on the pioneer transcontinental railway of Canada (in all probability the first railway to be double-tracked across this continent).

## Local Attractions

☞ An auto road is now being constructed on easy gradients from the city to the top of Mount Revelstoke, about 15 miles in length (altitude 6,150 feet). The view from this road winding up the side of the mountain and from the top is one that will not be forgotten. On the top of this mountain there is a large area (about 2,500 acres) of open and almost level prairie country, grown over with grass and flowers, and dotted here and there with small lakes and clusters of trees. This is a beautiful natural park and will make a most attractive resort where lovers of golf and other outside games can enjoy the cool, invigorating atmosphere of this altitude during the summer when the heat is oppressive on the plains and in the valleys. Other local points of interest are the Columbia River Canyon, Jordan River Falls, Canyon Creek Falls, Silver Tip Falls, Illecillewaet River Canyon, city power plant and dam on the Illecillewaet River, etc., all of which can be easily reached by good roads and trails. The government is building a road west to connect with the famous Okanagan Valley. When this is completed it will give access to all points west and south by auto.

## Natural Resources

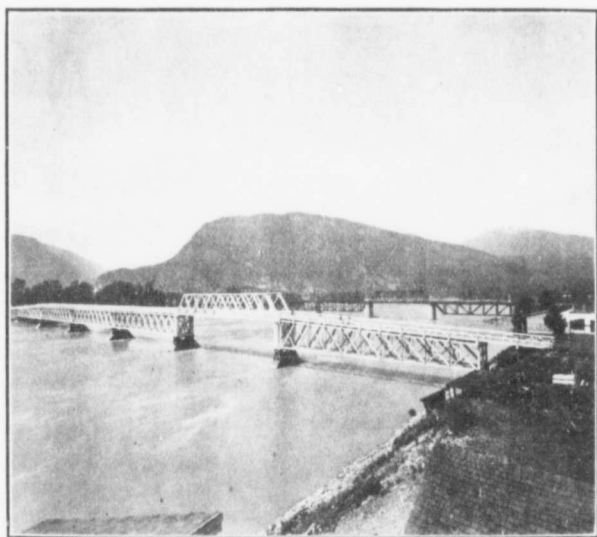
☞ **LAND.** The Columbia River Valley is from two to three miles wide, and contains a large area of good agricultural land, specially adapted for fruit and vegetable growing, and does not require irrigation. The land

---

---



NEW GOVERNMENT BUILDING—COURT HOUSE AND OFFICES



C. P. R. AND TRAFFIC BRIDGES, COLUMBIA RIVER AT  
REVELSTOKE

---

---

---

sawmills (three of the largest of these being directly tributary to Revelstoke) have their headquarters and offices here. Their average monthly payroll is \$60,000.00. The Provincial Government spends over \$100,000.00 annually for public improvements in the district tributary to Revelstoke, and the Dominion Government proposes to expend in the neighborhood of \$170,000.00 during the coming year on improvements of various kinds on the Columbia River adjacent to this city. It also has a planing-mill and sash and door factory.

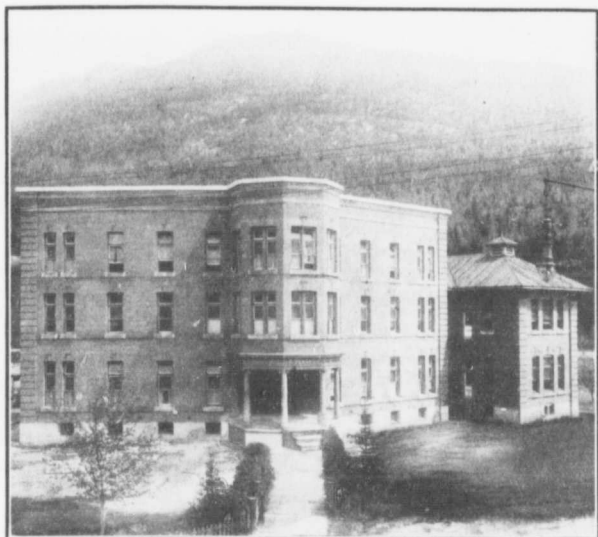
## Transportation Facilities

☐ East and west on the main line of the Canadian Pacific Railway three passenger trains run daily in each direction during the winter, and in summer four. In addition to these there are many extra trains during the tourist season. To the south, one first-class train runs daily to Arrowhead, connecting there with the magnificent steamer service of the C. P. R. lake fleet operating between there and West Robson, where rail connection is made to Nelson and with lines east, west and south. This is a splendid scenic trip, and one much patronized by tourists. To the north, during the summer months a steamer service is operated to La Porte (50 miles), the scene of the great gold rush of the sixties, and the present head of navigation. This is a lovely trip between banks of virgin forest with imposing backgrounds of snow and glacier-covered peaks, and, on account of the nature of this portion of the river, is one of the most interesting steamer trips in the world.

## Railway Development

☐ Double-tracking main line C. P. R.—Tenders have been called and are now received for the building of a double-track tunnel over five miles in length near Rogers Pass, with about fifteen miles of double-track diversion to connect the proposed tunnel with the present main line. This great work will take three years or more to complete and will cost several millions of dollars. In addition, surveys are completed for double-tracking the entire line through the mountains, and tenders have been called for a portion of this work immediately west of Revelstoke. This gigantic undertaking, equalling in magnitude that of the first construction, means the expenditure of many millions of dollars in the immediate vicinity of Revelstoke, and as headquarters of the mountain district of this great railroad, its effect must enormously benefit Revelstoke and will greatly increase the population and enhance the value of property.

---



QUEEN VICTORIA HOSPITAL



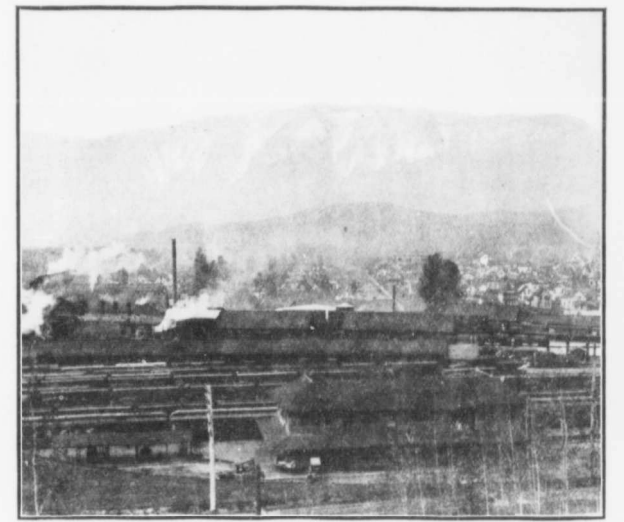
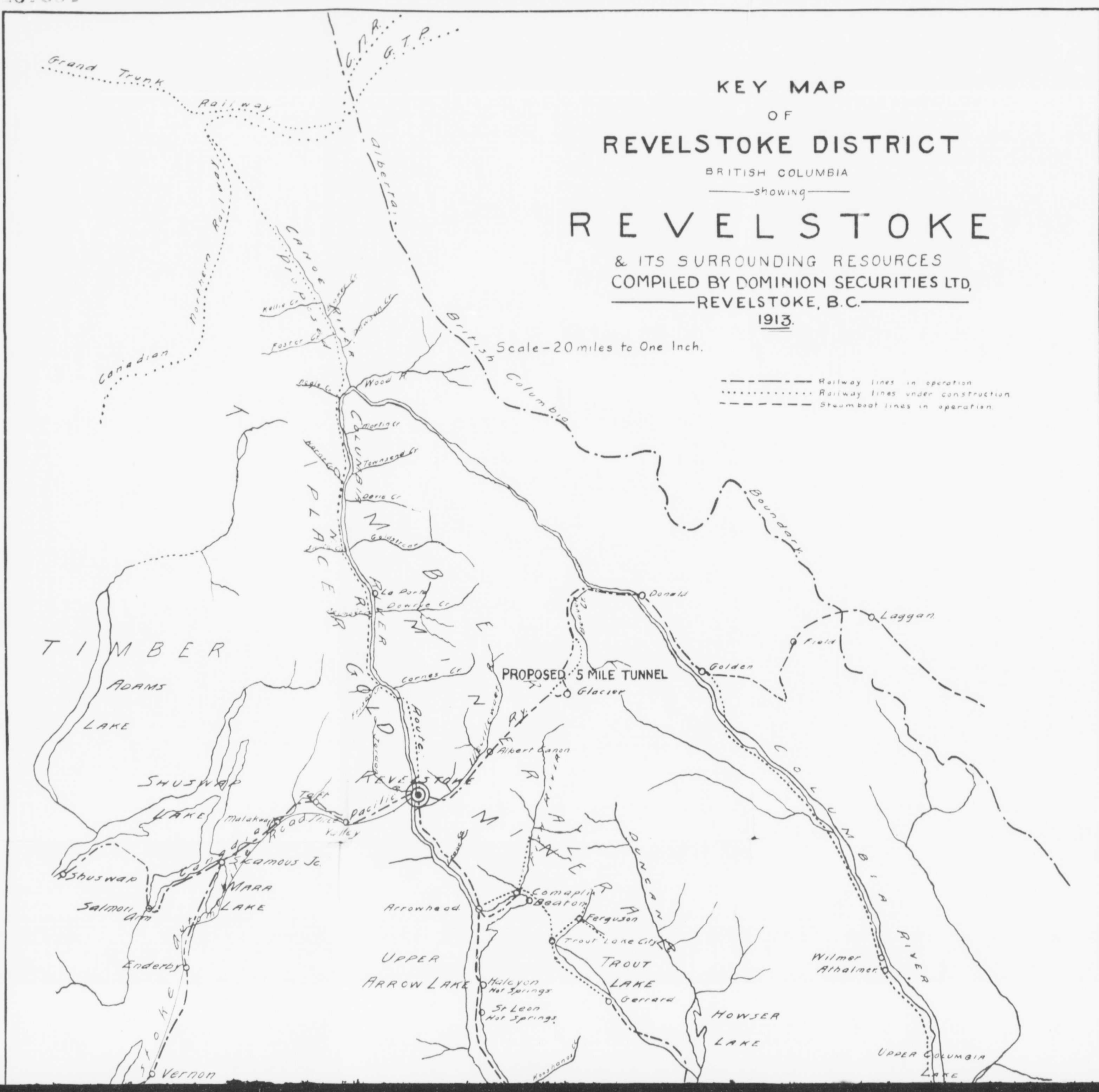
SAWLOGS—ARROW LAKES. SOUTH OF REVELSTOKE

---

KEY MAP  
OF  
REVELSTOKE DISTRICT  
BRITISH COLUMBIA  
—showing—  
**REVELSTOKE**  
& ITS SURROUNDING RESOURCES  
COMPILED BY DOMINION SECURITIES LTD.  
REVELSTOKE, B.C.  
1913.

Scale—20 miles to One Inch.

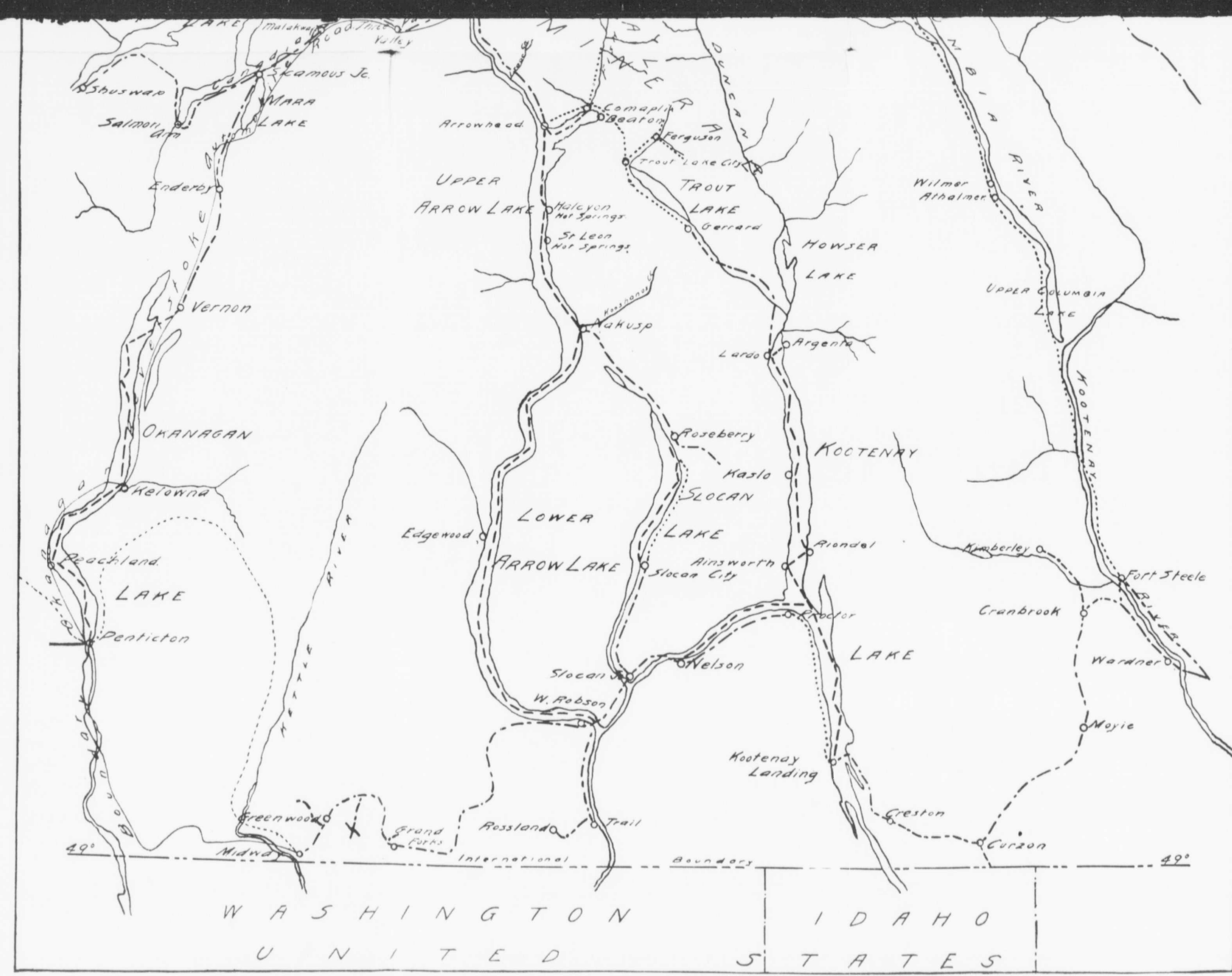
— Railway lines in operation  
- - - - - Railway lines under construction  
- - - - - Steamboat lines in operation



PORTION OF C. P. R. YARDS, ROUND HOUSE AND SHOPS

### Facts About Revelstoke

- ☐ Elevation, 1,490 feet above sea level.
- ☐ Population, 5,000.
- ☐ Climate mild and salubrious.
- ☐ Municipal water, light and power services.
- ☐ Modern sewerage system.
- ☐ Modern street lighting system.
- ☐ Modern fire alarm system.
- ☐ Efficient police force.
- ☐ It has three chartered banks.
- ☐ Efficient and modern hospital.
- ☐ Large and well-equipped Y. M. C. A.
- ☐ Two public schools, one high school, well staffed and equipped.
- ☐ Five churches—Roman Catholic, Anglican, Presbyterian, Methodist and Baptist.
- ☐ Benevolent societies.
- ☐ Social clubs and organizations well established.
- ☐ Summer and winter sports well organized.
- ☐ Five incoming mails and five outgoing mails daily.
- ☐ Drop letter-boxes all over the city.



- ☐ Two public schools, one high school, well staffed and equipped.
- ☐ Five churches—Roman Catholic, Anglican, Presbyterian, Methodist and Baptist.
- ☐ Benevolent societies.
- ☐ Social clubs and organizations well established.
- ☐ Summer and winter sports well organized.
- ☐ Five incoming mails and five outgoing mails daily.
- ☐ Drop letter-boxes all over the city.
- ☐ Continuous telephone, telegraph and ticket (railroad) services.
- ☐ Dominion and Provincial Government offices.
- ☐ Bonded baggage inspection service.
- ☐ C. P. R. divisional point.
- ☐ A daylight run to and from Vancouver and Calgary daily, through scenery unexcelled.
- ☐ On the Columbia River, the twelfth largest in the world.
- ☐ Junction (railroad) with Arrowhead, giving connection with all points in the South Kootenay via Arrow Lakes.
- ☐ Hotels throughout the city and district are good and rates reasonable.
- ☐ Automobiles, carriages and horses can be had for hire at reasonable rates.
- ☐ Fair ground, race track and recreation parks.

**Dominion Security Co. Ltd.**  
Revelstoke, B. C.

---

---

## Civic Conveniences

☐ Incorporated in 1899, the city has acquired and now owns all public utilities, such as water, light and power. It has a plentiful supply (gravitation) of the purest water in the country direct from the mountain tops, and controls sufficient watershed to supply a city twenty times its size. It has built a concrete dam and installed a hydro-electric power and lighting plant capable of considerable expansion when required. About 1,200 horse-power is now generated. A complete sewerage system has been installed. It has two large public schools and a high school valued at \$100,000. It has a large and well-equipped Y. M. C. A. contributed to by the C. P. R., costing about \$35,000. It has the finest court house in the interior of British Columbia, costing \$160,000. Its public hospital is one of the very best in the province, and has the most modern equipment and efficient staff; cost \$150,000. The Provincial Government spends large amounts annually constructing roads, trails and bridges in the district tributary to Revelstoke. For the past three years this has averaged \$100,000 per year, not including the highway bridge across the Columbia River. This splendid structure cost \$100,000. Their appropriation for roads, trails and bridges in the district for 1913 is \$124,000. The Dominion Government have just completed a \$12,000 wharf on the Columbia River, and they have acquired a site for a new post office, public works office and customs offices, and provided \$50,000 in this year's appropriations to commence the erection of this building.

## Property Values

☐ Revelstoke has been gradually growing, and is probably the only city in Western Canada where property values have not greatly increased during the last few years. Property today is listed at much less than one-half the price quoted in cities of similar size, and few if any can show as large a payroll, and none can show greater natural resources.



**Dominion Security Co. Ltd.**

Revelstoke, B. C.

---

---