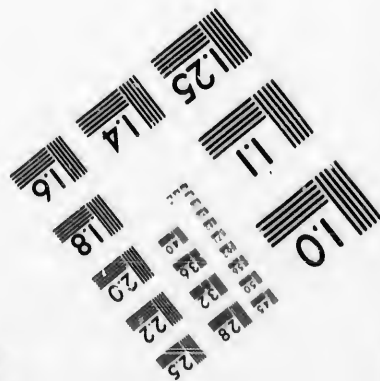
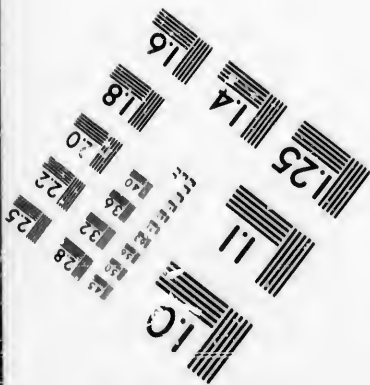
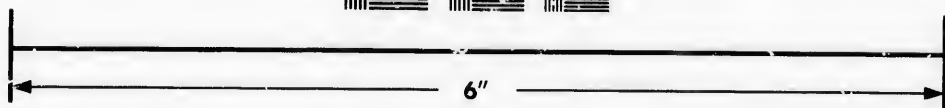
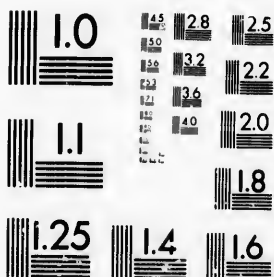


**IMAGE EVALUATION  
TEST TARGET (MT-3)**



**Photographic  
Sciences  
Corporation**

23 WEST MAIN STREET  
WEBSTER, N.Y. 14590  
(716) 872-4503

**CIHM/ICMH  
Microfiche  
Series.**

**CIHM/ICMH  
Collection de  
microfiches.**



**Canadian Institute for Historical Microreproductions / Institut canadien de microreproductions historiques**

**© 1986**

Technical and Bibliographic Notes/Notes techniques et bibliographiques

The Institute has attempted to obtain the best original copy available for filming. Features of this copy which may be bibliographically unique, which may alter any of the images in the reproduction, or which may significantly change the usual method of filming, are checked below.

L'Institut a microfilmé le meilleur exemplaire qu'il lui a été possible de se procurer. Les détails de cet exemplaire qui sont peut-être uniques du point de vue bibliographique, qui peuvent modifier une image reproduite, ou qui peuvent exiger une modification dans la méthode normale de filmage sont indiqués ci-dessous.

- Coloured covers/  
Couverture de couleur
- Covers damaged/  
Couverture endommagée
- Covers restored and/or laminated/  
Couverture restaurée et/ou pelliculée
- Cover title missing/  
Le titre de couverture manque
- Coloured maps/  
Cartes géographiques en couleur
- Coloured ink (i.e. other than blue or black)/  
Encre de couleur (i.e. autre que bleue ou noire)
- Coloured plates and/or illustrations/  
Planches et/ou illustrations en couleur
- Bound with other material/  
Relié avec d'autres documents
- Tight binding may cause shadows or distortion along interior margin/  
La reliure serrée peut causer de l'ombre ou de la distortion le long de la marge intérieure
- Blank leaves added during restoration may appear within the text. Whenever possible, these have been omitted from filming/  
Il se peut que certaines pages blanches ajoutées lors d'une restauration apparaissent dans le texte, mais, lorsque cela était possible, ces pages n'ont pas été filmées.
- Additional comments:/  
Commentaires supplémentaires:

- Coloured pages/  
Pages de couleur
- Pages damaged/  
Pages endommagées
- Pages restored and/or laminated/  
Pages restaurées et/ou pelliculées
- Pages discoloured, stained or foxed/  
Pages décolorées, tachetées ou piquées
- Pages detached/  
Pages détachées
- Showthrough/  
Transparence
- Quality of print varies/  
Qualité inégale de l'impression
- Includes supplementary material/  
Comprend du matériel supplémentaire
- Only edition available/  
Seule édition disponible
- Pages wholly or partially obscured by errata slips, tissues, etc., have been refilmed to ensure the best possible image/  
Les pages totalement ou partiellement obscurcies par un feuillet d'errata, une pelure, etc., ont été filmées à nouveau de façon à obtenir la meilleure image possible.

This item is filmed at the reduction ratio checked below/  
Ce document est filmé au taux de réduction indiqué ci-dessous.

|                          |                          |                          |                          |                                     |                          |
|--------------------------|--------------------------|--------------------------|--------------------------|-------------------------------------|--------------------------|
| 10X                      | 14X                      | 18X                      | 22X                      | 26X                                 | 30X                      |
| <input type="checkbox"/> | <input type="checkbox"/> | <input type="checkbox"/> | <input type="checkbox"/> | <input checked="" type="checkbox"/> | <input type="checkbox"/> |
| 12X                      | 16X                      | 20X                      | 24X                      | 28X                                 | 32X                      |

The copy filmed here has been reproduced thanks to the generosity of:

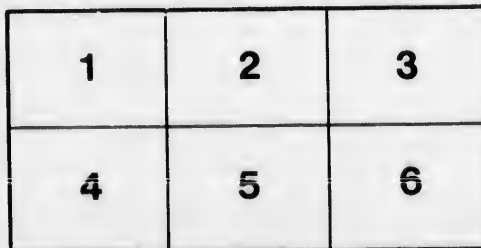
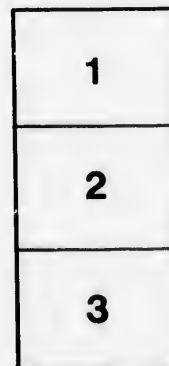
Archives of Ontario Library

The images appearing here are the best quality possible considering the condition and legibility of the original copy and in keeping with the filming contract specifications.

Original copies in printed paper covers are filmed beginning with the front cover and ending on the last page with a printed or illustrated impression, or the back cover when appropriate. All other original copies are filmed beginning on the first page with a printed or illustrated impression, and ending on the last page with a printed or illustrated impression.

The last recorded frame on each microfiche shall contain the symbol  $\rightarrow$  (meaning "CONTINUED"), or the symbol  $\nabla$  (meaning "END"), whichever applies.

Maps, plates, charts, etc., may be filmed at different reduction ratios. Those too large to be entirely included in one exposure are filmed beginning in the upper left hand corner, left to right and top to bottom, as many frames as required. The following diagrams illustrate the method:



L'exemplaire filmé fut reproduit grâce à la générosité de:

Archives of Ontario Library

Les images suivantes ont été reproduites avec le plus grand soin, compte tenu de la condition et de la netteté de l'exemplaire filmé, et en conformité avec les conditions du contrat de filmage.

Les exemplaires originaux dont la couverture en papier est imprimée sont filmés en commençant par le premier plat et en terminant soit par la dernière page qui comporte une empreinte d'impression ou d'illustration, soit par le second plat, selon le cas. Tous les autres exemplaires originaux sont filmés en commençant par la première page qui comporte une empreinte d'impression ou d'illustration et en terminant par la dernière page qui comporte une telle empreinte.

Un des symboles suivants apparaîtra sur la dernière image de chaque microfiche, selon le cas: le symbole  $\rightarrow$  signifie "A SUIVRE", le symbole  $\nabla$  signifie "FIN".

Les cartes, planches, tableaux, etc., peuvent être filmés à des taux de réduction différents. Lorsque le document est trop grand pour être reproduit en un seul cliché, il est filmé à partir de l'angle supérieur gauche, de gauche à droite, et de haut en bas, en prenant le nombre d'images nécessaire. Les diagrammes suivants illustrent la méthode.

errata  
to

pelure,  
on à



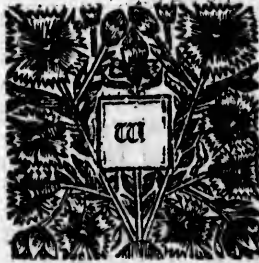
634  
GRE

Anno Nono

1711

# Annæ Reginae.

An Act for the Preservation of White and other Pine-Trees growing in Her Majesties Colonies of *New-Hampshire*, the *Massachusetts-Bay*, and Province of *Main*, *Rhode-Island*, and *Providence-Plantation*, the *Narraganset Country*, or *Kings-Province*, and *Connecticut* in *New-England*, and *New-York*, and *New-Jersey*, in *America*, for the Masting Her Majesties Navy.



Whereas there are great Numbers of White or other Sort of Pine-Trees, fit for Masts, growing in Her Majesties Colonies of *New-Hampshire*, the *Massachusetts-Bay*, and Province of *Main*, *Rhode-Island*, and *Providence-Plantation*, the *Narraganset Country*, or *Kings-Province*, and *Connecticut* in *New-England*, and *New-York*, and *New-Jersey*, fit for the Masting Her Majesties Royal Navy: And whereas the same growing near the Sea, and on Navigable Rivers, may commodiously be brought into this Kingdom for the Service aforesaid: Wherefore, for the better Preservation thereof, Be it Enacted by the Queens most Excellent Majesty, by and with the Advice and Consent of the Lords Spiritual and Temporal, and Commons, in this present Parliament Assembled, and by the Authority of the same, That from and after the Twenty fourth Day of September, which shall be in the Year of our Lord, One thousand seven hundred and eleven, no Person or Persons within the said Colonies of *New-Hampshire*, the *Massachusetts-Bay*, and Province of *Main*, *Rhode-Island*, and *Providence-Plantation*, the *Narraganset Country*, or *Kings-Province*, *Connecticut* in *New-England*, and *New-York*, and *New-Jersey*, or any of them, do or shall presume to Cut, Fell, or Destroy any White or other Sort of Pine-Tree

E 222 2

fit for Masts, not being the Property of any private Person, such Tree being of the Growth of Twenty four Inches Diameter and upwards at Twelve Inches from the Earth, without Her Majesties Licence for so doing first had and obtained, on the Penalty or Forfeiture of One hundred Pounds Sterling for every such Offence, on Proof thereof to be made by one or more credible Witnesses, on Oath before one of Her Majesties Justices of the Peace there, within or nearest to such Place where such Offence shall be committed, one Moiety of such Penalty or Forfeiture to be to Her Majesty, Her Heirs and Successors, the other Moiety to the Informer who shall Sue for the same within Six Months, to be Levied by Warrant under the Hand and Seal of such Justice of the Peace.

And whereas the Surveyor General of Her Majesties Woods in those Parts is, by himself or his sufficient Deputy or Deputies, by Her Majesties Commission, Authorized and Directed to Mark with the Broad Arrow all such Trees as now are, or hereafter shall be fit and proper to be taken for the Use of Her Majesties Royal Navy, and to keep a Register of the same, thereby to prevent the Destruction of such Trees: And whereas several Persons, not Lawfully thereto Authorized, as aforesaid, have presumed to Mark such Trees with the Broad Arrow, thereby to deter others Her Majesties good Subjects from getting Logs for Lumber and other Uses, and to make to themselves a Property in such Trees, though growing on Common Lands; Be it therefore further Enacted by the Authority aforesaid, That from and after the said Twenty fourth Day of September, One thousand seven hundred and eleven, no Person or Persons within the said Colonies of New-Hampshire, the Massachusetts-Bay, and Provin<sup>t</sup> of Main, Rhode-Island, and Providence-Plantation, the Narragamet Country, or Kings-Province, Connecticut in New-England, and New-York, and New-Jersey, or any of them, other than the said Surveyor General for the time being, his Deputy or Deputies, or such Person as shall be Authorized thereto by Warrant under the said Surveyor Generals Hand, do or shall presume to Mark any such White or other sort of Pine-Trees with the Broad Arrow, on the Penalty or Forfeiture of Five Pounds Sterling for every such Offence, to be Recovered and Levied in such Manner, and on such Proof, and to be distributed, as aforesaid: Any thing herein before, or in any former Act, contained to the contrary in any wise notwithstanding.

F I N I S.

on, such  
er and  
er Ma-  
Penalty  
ry such  
credible  
of the  
Offence  
iture to  
Poetry  
Months,  
Justice

Woods  
eputies,  
to Park  
fter Hall  
s Royal  
vent the  
ons, not  
to Park  
hers Her  
nd other  
s, though  
nated by  
Twenty  
d eleven,  
ampshire,  
and, and  
Province,  
ew-Jersey,  
the time  
ll be Au-  
Generals  
oz other  
ry oz For-  
to be Re-  
f, and to  
oz in any  
standing.



