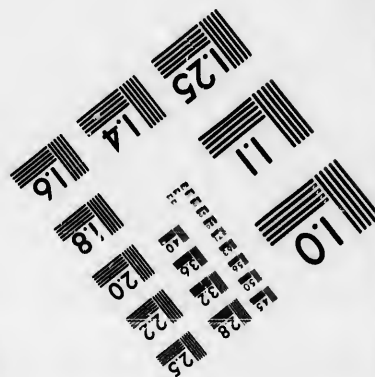
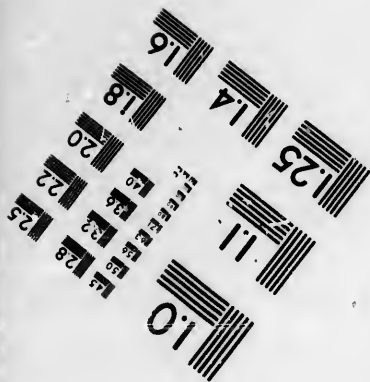
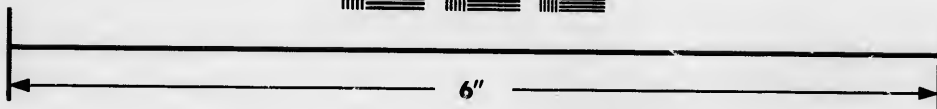
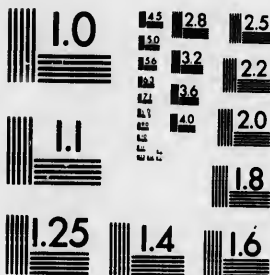


IMAGE EVALUATION
TEST TARGET (MT-3)



Photographic
Sciences
Corporation

23 WEST MAIN STREET
WEBSTER, N.Y. 14580
(716) 872-1503

**CIHM/ICMH
Microfiche
Series.**

**CIHM/ICMH
Collection de
microfiches.**



Canadian Institute for Historical Microreproductions / Institut canadien de microreproductions historiques

© 1986

Technical and Bibliographic Notes/Notes techniques et bibliographiques

The Institute has attempted to obtain the best original copy available for filming. Features of this copy which may be bibliographically unique, which may alter any of the images in the reproduction, or which may significantly change the usual method of filming, are checked below.

L'Institut a microfilmé le meilleur exemplaire qu'il lui a été possible de se procurer. Les détails de cet exemplaire qui sont peut-être uniques du point de vue bibliographique, qui peuvent modifier une image reproduite, ou qui peuvent exiger une modification dans la méthode normale de filmage sont indiqués ci-dessous.

- Coloured covers/
Couverture de couleur
- Covers damaged/
Couverture endommagée
- Covers restored and/or laminated/
Couverture restaurée et/ou pelliculée
- Cover title missing/
Le titre de couverture manque
- Coloured maps/
Cartes géographiques en couleur
- Coloured ink (i.e. other than blue or black)/
Encre de couleur (i.e. autre que bleue ou noire)
- Coloured plates and/or illustrations/
Planches et/ou illustrations en couleur
- Bound with other material/
Relié avec d'autres documents
- Tight binding may cause shadows or distortion
along interior margin/
La reliure serrée peut causer de l'ombre ou de la
distorsion le long de la marge intérieure
- Blank leaves added during restoration may
appear within the text. Whenever possible, these
have been omitted from filming/
Il se peut que certaines pages blanches ajoutées
lors d'une restauration apparaissent dans le texte,
mais, lorsque cela était possible, ces pages n'ont
pas été filmées.
- Additional comments: / Various pagings.
Commentaires supplémentaires:

- Coloured pages/
Pages de couleur
- Pages damaged/
Pages endommagées
- Pages restored and/or laminated/
Pages restaurées et/ou pelliculées
- Pages discoloured, stained or foxed/
Pages décolorées, tachetées ou piquées
- Pages detached/
Pages détachées
- Showthrough/
Transparence
- Quality of print varies/
Qualité inégale de l'impression
- Includes supplementary material/
Comprend du matériel supplémentaire
- Only edition available/
Seule édition disponible
- Pages wholly or partially obscured by errata
slips, tissues, etc., have been refilmed to
ensure the best possible image/
Les pages totalement ou partiellement
obscurcies par un feuillet d'errata, une pelure,
etc., ont été filmées à nouveau de façon à
obtenir la meilleure image possible.

This item is filmed at the reduction ratio checked below/
Ce document est filmé au taux de réduction indiqué ci-dessous.

10X	12X	14X	16X	18X	20X	22X	24X	26X	28X	30X	32X
						✓					

The copy filmed here has been reproduced thanks to the generosity of:

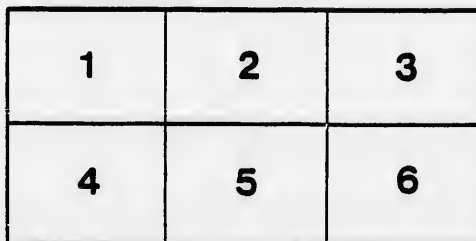
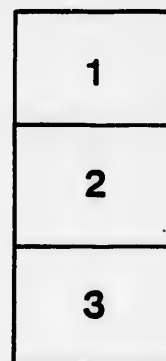
Législature du Québec
Québec

The images appearing here are the best quality possible considering the condition and legibility of the original copy and in keeping with the filming contract specifications.

Original copies in printed paper covers are filmed beginning with the front cover and ending on the last page with a printed or illustrated impression, or the back cover when appropriate. All other original copies are filmed beginning on the first page with a printed or illustrated impression, and ending on the last page with a printed or illustrated impression.

The last recorded frame on each microfiche shall contain the symbol \rightarrow (meaning "CONTINUED"), or the symbol ∇ (meaning "END"), whichever applies.

Maps, plates, charts, etc., may be filmed at different reduction ratios. Those too large to be entirely included in one exposure are filmed beginning in the upper left hand corner, left to right and top to bottom, as many frames as required. The following diagrams illustrate the method:



L'exemplaire filmé fut reproduit grâce à la générosité de:

Législature du Québec
Québec

Les images suivantes ont été reproduites avec le plus grand soin, compte tenu de la condition et de la netteté de l'exemplaire filmé, et en conformité avec les conditions du contrat de filmage.

Les exemplaires originaux dont la couverture en papier est imprimée sont filmés en commençant par la première page et en terminent soit par la dernière page qui comporte une empreinte d'impression ou d'illustration, soit par le second plat, selon le cas. Tous les autres exemplaires originaux sont filmés en commençant par la première page qui comporte une empreinte d'impression ou d'illustration et en terminent par la dernière page qui comporte une telle empreinte.

Un des symboles suivants apparaîtra sur la dernière image de chaque microfiche, selon le cas: le symbole \rightarrow signifie "A SUIVRE", le symbole ∇ signifie "FIN".

Les cartes, planches, tableaux, etc., peuvent être filmés à des taux de réduction différents. Lorsque le document est trop grand pour être reproduit en un seul cliché, il est filmé à partir de l'angle supérieur gauche, de gauche à droite, et de haut en bas, en prenant le nombre d'images nécessaire. Les diagrammes suivants illustrent la méthode.

ails
du
odifier
une
mage

rata
o

elure,
à

Vol 1444

DOMINION OF CANADA
AGRICULTURAL & INDUSTRIAL EXHIBITION

PATRON: HIS EXCELLENCY THE GOVERNOR GENERAL.

PRIZE LIST
FOR THE
Dominion Exhibition

TO BE HELD IN THE
CITY OF MONTREAL,

Opening Tuesday, September 14th, closing Friday, September 24th,

1880.

\$20,000 IN PRIZES

OFFERED FOR

Live Stock and Poultry; Dairy and Agricultural
Products; Implements; Machinery; Manu-
factures; Fine Arts; Ladies'
Work, &c., &c.

COMPETITION OPEN TO THE WORLD.

MONTREAL:

PRINTED BY THE MONTREAL PRINTING COMPANY, 245 ST. JAMES STREET.

1880.

AGRI

Priz

PROV

Will

a

Offic

Offic

DOMINION OF CANADA
AGRICULTURAL AND INDUSTRIAL EXHIBITION

OPEN TO THE WORLD.

Prize List and Rules and Regulations

FOR THE DOMINION EXHIBITION,

— TO BE HELD ON THE —

PROVINCIAL EXHIBITION GROUNDS, MILE-END,

(Adjoining Mount Royal Park.)

— AT THE —

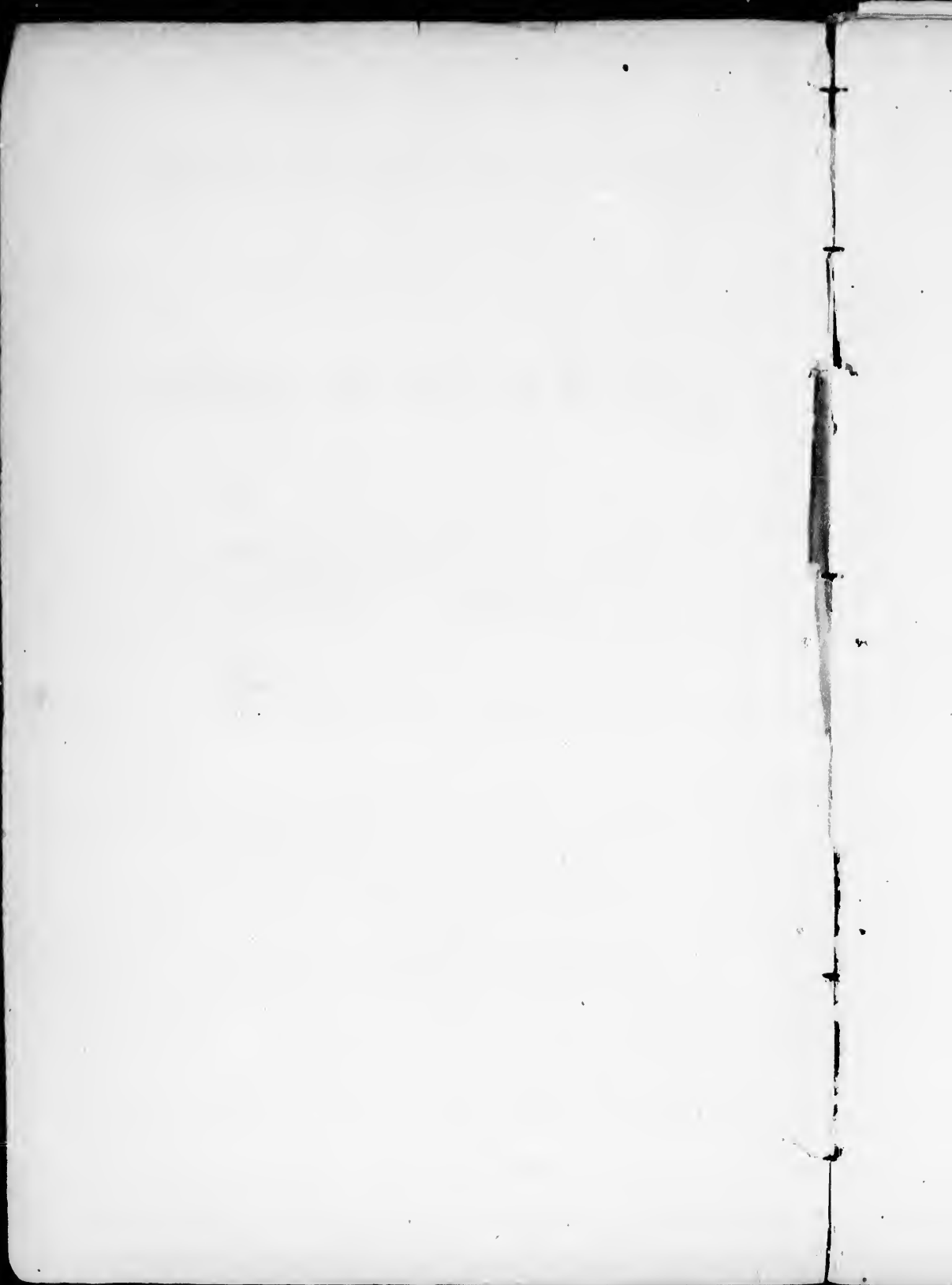
CITY OF MONTREAL.

Will open on TUESDAY, 14th September, 1880,
at 9 A. M., and close on FRIDAY, 24th
September, at 2 o'clock, P. M.

\$20,000 IN PRIZES.

Office of the Council of Agriculture, 63 St. GABRIEL ST., MONTREAL.

Office of the Council of Arts, - 181 St. JAMES ST., MONTREAL.



ORGANIZATION.

PATRON.

HIS EXCELLENCY THE GOVERNOR GENERAL.

VICE-PATRONS.

THE LIEUTENANT GOVERNORS OF THE PROVINCES OF THE DOMINION
AND THE MINISTER OF AGRICULTURE.

HONORARY DIRECTORS.

QUEBEC.

Hon. J. A. Chapleau, *Commissioner of Agriculture.*
S. Rivard, Esq., *Mayor of the City of Montreal.*
L. H. Massue, Esq., *President of the Council of Agriculture.*
A. A. Stevenson, Esq., *President of the Council of Arts & Manufactures.*

ONTARIO.

Hon. S. C. Wood, *Commissioner of Agriculture.*
J. C. Rykert, Esq., M. P. Hon. D. Christie, Senator.
Hon. J. Skead, Senator.

NOVA SCOTIA.

Sir Chas. Tupper, *Minister of Public Works.*
Hon. A. W. McLelan, Senator.

NEW BRUNSWICK.

Sir Leonard Tilley, *Minister of Finance.* Hon. D. Wark, Senator.
J. A. Girouard, Esq., M.P.

PRINCE EDWARD ISLAND.

Hon. R. P. Haythorne, Senator. F. St. C. Brecken, Esq., M. P.

MANITOBA.

Hon. J. Norquay, *Premier.* Hon. M. A. Girard, Senator.

BRITISH COLUMBIA.

Hon. C. F. Cornwall, Senator. F. J. Barnard, Esq., M. P.

COUNCIL OF AGRICULTURE

— OF THE —

PROVINCE OF QUEBEC.

HON. J. A. CHAPLEAU, *Commissioner of Agriculture and Public Works.*

HON. GEDEON OUMET, *Superintendent of Public Instruction.*

L. H. MASSUE, Esq., M. P., *President.*

HON. J. GAUDET, *Vice-President.*

G. LECLERE, *Secretary.*

Hon. L. Beaubien.

P. B. Benoit, Esq., M. P.

S. N. Blackwood, Esq.

L. H. Blais, Esq.

J. M. Browning, Esq.

A. Casavant, Esq.

Aug. Casgrain, Esq.

Hon. M. H. Cochrane.

E. J. DeBlois, Esq.

J. N. E. Faribeault, Esq.

L. N. Gauvreau, Esq.

J. I. Gibb, Esq.

A. Guilbault, Esq.

J. J. A. Marsan, Esq.

Rev. F. Pilote.

Alex. Somerville, Esq.

Hon. J. J. Ross.

Rev. S. Tassé.

COUNCIL OF ARTS AND MANUFACTURES

— OF THE —

PROVINCE OF QUEBEC.

HON. J. A. CHAPLEAU, *Commissioner of Agriculture and Public Works.*

HON. E. T. PAQUET, *Provincial Secretary.*

HON. GEDEON OUMET, *Superintendent of Public Instruction.*

A. A. Stevenson, Esq., *President.*

C. W. Carrier, Esq., *Vice-President.*

S. C. Stevenson, *Secretary.*

J. B. Rolland, Esq.

Thos. White, Esq., M. P.

A. Lévêque, Esq.

C. A. Dansereau, Esq.

H. Bulmer, Esq.

N. Bourassa, Esq.

A. Boyd, Esq.

G. Boivin, Esq.

S. E. Dawson, Esq.

M. J. F. Quinn, Esq.

Rev. O. Audet.

Jas. Carrell, Esq.

L. I. Boivin, Esq.

T. Milette, Esq.

A. G. Lomas, Esq.

PERMANENT EXHIBITION COMMITTEE.

L. H. Massue, Esq., M.P., <i>President.</i>	H. Bulmer, Esq., <i>Vice-President.</i>
Hon. L. Beaubien, Esq., M.P.P.	T. White, Esq., M. P.
P. B. Benoit, Esq., M. P.	A. A. Stevenson, Esq.
J. M. Browning, Esq.	L. I. Boivin, Esq.
A. Somerville, Esq.	J. B. Rolland, Esq.
Alderman H. A. Nelson, M.P.P.	} <i>Representing the Corporation on the Building Committee.</i>
“ M. Laurent,	
“ I. Allard,	

JOINT SECRETARIES.

G. Leclere, Esq.

S. C. Stevenson, Esq.

TREASURER.

A. A. STEVENSON, Esq.

SUPERINTENDENTS—AGRICULTURAL DEPARTMENT.

Horses	Aug. Casgrain, Esq.
Cattle	S. N. Blackwood, Esq.
Sheep	Alex. Somerville, Esq.
Swine	F. P. Benoit, Esq., M.P.
Poultry	E. DeBlois, Esq.
Agricultural Productions	L. N. Gauvreau, Esq.
Dairy Products	A. Casavant, Esq.
Agricultural Implements	L. Beaubien, Esq.
Referee and Consulting Veterin'y Surg.,	D. McEachern, Esq., F.R.C.V.S.				

SUPERINTENDENTS—INDUSTRIAL DEPARTMENT.

FINE ARTS, NATURAL HISTORY, LADIES' WORK—Messrs. N. Bourassa and S. E. Dawson ;

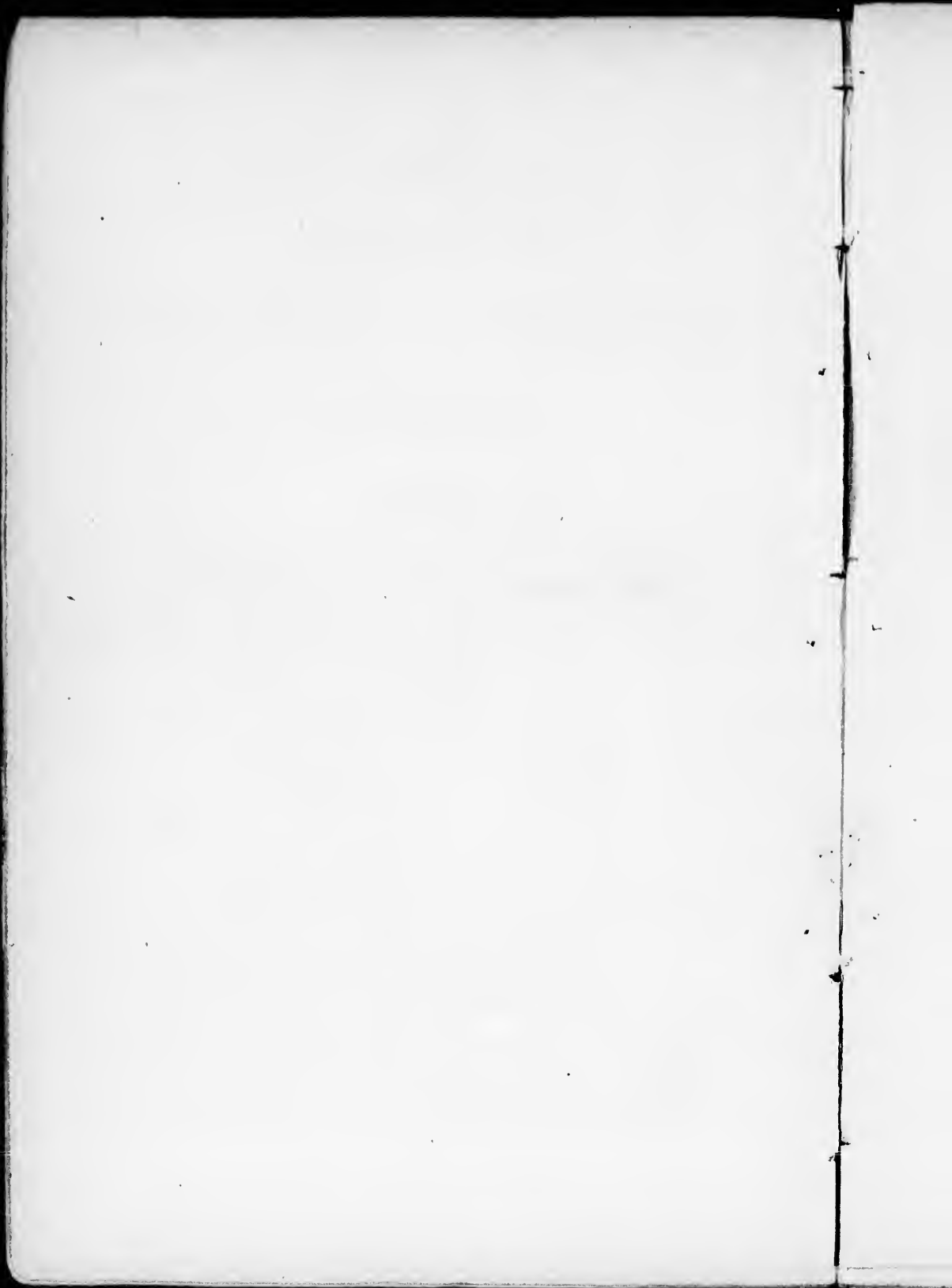
CHEMICAL MANUFACTURES, &c.—A. Lévêque, Esq.

PRINTING, PAPER, BOOKBINDING, &c.—T. White, Esq., M. P.

BUILDING MATERIALS, CABINET WARE, CARRIAGES, &c.—H. Bulmer, Esq.

MACHINERY, METAL WORK, STOVES AND CASTINGS, SADDLERY, TRUNKS, &c.—L. I. Boivin, Esq., and C. W. Carrier, Esq.

SHOE MATERIALS, WEARING APPAREL, WOOLEN GOODS, GROCERIES AND PROVISIONS —G. Boivin, Esq.



PROGRAMME.

The Exhibition will open at 9 a.m., on TUESDAY the 14th of September, and continue open until two o'clock, p.m., on FRIDAY the 24th of SEPTEMBER, closing daily at 6 p.m.

His Excellency the Governor-General will formally open the Exhibition on TUESDAY, the 21st of September, at two o'clock in the afternoon, when an address will be presented to His Excellency by the Committee. Her Royal Highness the Princess Louise will probably also honor the Exhibition with her presence.

The Industrial portion of the Exhibition, including Manufactures, Arts, Implements and Machinery, &c., (by no means the least interesting branch,) will be on view from the opening to the close. The show of Horses, Cattle, Sheep, Pigs, Poultry, Agricultural and Dairy Products will take place during the second week, when every branch of the Exhibition will be in full operation.

It is also the intention of the Committee to provide several prominent attractions outside of the regular Exhibition, during its continuance.

GENERAL RULES AND REGULATIONS.

Intending exhibitors and visitors are particularly requested to read carefully and consider the following Rules and Regulations governing the Exhibition, which will be, in all cases, strictly enforced.

ADMISSION TO THE GROUNDS.

The price of admission will be 25 cents each time of entering. The admission will be by means of registering turnstiles, and **each person must be provided with the proper change before entering.**

Necessary attendants upon stock and machinery, &c., will be furnished with special passes, on applying at the Secretary's office on the grounds. Each pass will bear the name of the person to whom it is issued, and if presented by any other person will be forfeited.

One Exhibitor's ticket, admitting an exhibitor only *once* each day, and *positively not transferable*, may be purchased by any individual exhibiting, and if a firm, by any one member thereof, at the Secretary's office, on the grounds, at the following rates, viz., for one week, \$1; two weeks, \$1.50.

Judges, distinguished visitors and members of the press, will be furnished with badges. No other tickets whatever will be issued.

The entry tickets upon animals or articles will admit the person bringing them to the Show Grounds for exhibition, along with such animals or articles without the use of any other ticket. Afterwards, such parties must be provided with proper passes, as above.

ENTRIES.

All entries in the Agricultural Department must be made on printed forms, which may be obtained from the Secretary of the Council of Agriculture or from the Secretaries of all County Agricultural Societies, and in the Industrial Department, from the Secretary of the Council of Arts and Manufactures. These forms are to be filled up and signed by the exhibitor, and sent to the respective Secretaries, at Montreal, on or before the following dates:—

Horses, Cattle, Sheep, Pigs, Poultry, Agricultural Implements, and Dairy Products,—Saturday, September 4th.

Manufactures, Fine Arts, and Ladies' Work,—Saturday, August 28th.

The entrance fee must in all cases be forwarded with the entry. No entry will be accepted unless this is done.

In order to prevent unnecessary labor and loss of time, exhibitors are particularly requested to **enter only such articles** as they intend to exhibit.

Exhibitors will please take notice that it is absolutely required that the entries be made at the dates above mentioned, in order to afford sufficient time to examine the entry papers, and to correspond with parties, when necessary, for the correction of errors and omissions; and no exception will be made to this rule on any consideration whatever.

In the Live Stock Classes, the entry must, in every instance, be made in the name of the *bona fide* owner, and unless this rule be observed no premium will be awarded, or if awarded, will be withheld. If any person shall exhibit any animal of which he is not the *bona fide* owner,

he shall forfeit any premium which may be awarded him, and be precluded from exhibiting in future.

In all the other classes, entries must be made in the names of the producers or manufacturers only, and by such producers themselves or their agents duly authorized. If any person, other than the authorized agent, shall enter an article for exhibition, as produced or manufactured by himself, when it has not really been so, he shall forfeit any premium which may be awarded the article, and be precluded from exhibiting in future.

No person shall be allowed to enter for exhibition more than one specimen in any one section of a class, unless the additional article be of a distinct named variety or pattern from the first. This rule not to apply to animals, but to apply to all kinds of grain, vegetable products, manufactured articles, &c., in which each additional specimen would necessarily be precisely similar to the first.

Extra Entries.—Every article must be entered under some one of the headings in the regular list, when possible; but if any article is of a distinct character from anything specified in the list, it may then be entered in the Extra section of that class with which it most nearly corresponds. No article, however, will be allowed to be entered as an extra for want of sufficient quantity or number, or any other similar defect, when of the same kind or variety as anything named in the list; in such a case the article cannot be exhibited.

On the entry of each animal or article, a card will be furnished the exhibitor, specifying the class, the section, the number of the entry, and the name of the exhibitor, **which card must remain attached to the animal or article during the Exhibition.**

In all cases the right is reserved to reject entirely or accept conditionally any entry or application; and under no circumstances will articles which are offensive by reason of their odor or appearance, or which are dangerous by reason of their combustible or explosive character, be admitted; and if any such be introduced by an exhibitor through misapprehension or otherwise, they may be removed by order of the Committee.

ENTRANCE FEES.

The charge for exhibiting at this Exhibition will be by fees and charges for space, which have been placed at the lowest possible figure as follows:—

Horses—entrance free: \$1 per head for stabling.

Cattle—entrance free: 50 cents per head for stalls.

Sheep—entrance free : 25 cents per head for pens.

Pigs—entrance free : 25 cents per head for pens.

Poultry—25 cents each entry.

Agricultural Implements, Machinery and Stoves—Where exhibitors do not pay for space, 50 cents each entry.

Machinery Hall—\$1 per foot frontage, according to location.

Agricultural and Dairy Products—Ten entries and under, 50 cents ; over ten entries, \$1.

Fine Art Department—50 cents each entry.

Ladies' Work—Five entries and under, 50 cents ; over five entries, \$1.00.

In all other Departments or Classes, than those above named, the fee will be for each class \$1.00.

Fees and charges for space must in all cases accompany the entry.

APPLICATIONS FOR SPACE.

Exhibitors requiring space in the Industrial Department, Carriage Building, or in the Machinery Hall, must make application for the same at the time of making their entries. Forms for application can be procured from the Secretary.

Applications for space elsewhere will also be received and considered by the Committee up to Saturday, August 21st, from persons who may be desirous of making special exhibits, either in competition for prizes or for exhibition only.

PREPARATORY WORK.

On and after Monday the 30th of August, exhibitors, their agents, and workmen, will be admitted to the grounds and buildings for the purpose of making preparatory structures, or getting machinery and implements into position.

DELIVERY OF ARTICLES, AND CHARGE OF SAME WHILE ON EXHIBITION.

Horses, Cattle, Sheep, Pigs, Poultry, Agricultural and Dairy Products, may be delivered on the grounds on Saturday, the 18th of September, but in no case will be received later than noon on Monday, the 20th of September.

All specimens for exhibition in the Fine Arts Department, must be delivered not later than Wednesday, the 8th of September, in order that they may be properly classified and hung previous to the day of opening.

All other articles, Implements, Machinery, Stoves, Manufactures, Ladies' Work, &c., &c., must be delivered on the grounds by Saturday the 11th of September.

Articles or animals arriving after the above dates will not be allowed to compete. Exhibitors of Machinery and other heavy articles are expected to have them on the grounds and placed in position the week preceding the opening of the Exhibition.

All boxes, wrappings, and other packing material, must be cleared away, and everything be in proper order before the opening on Tuesday, the 14th of September.

Exhibitors must provide for the delivery of their articles upon the Exhibition Ground. The Committee cannot, in any case, make provision for their transportation, or be subjected to any expense therefor, either in their delivery at, or return from, the grounds. All the expenses connected therewith must be provided for by the exhibitors themselves.

Articles not accompanied by their owners may be addressed to the care of the Secretaries of the Department for which they are intended, who will receive them on their being delivered at the Grounds; but in no case will such articles be brought on the Grounds and placed on exhibition except by and at the expense of the owners or their authorized agents, and at their risk.

Exhibitors on arriving with their articles, will apply at the office, when they will be informed where the articles are to be placed.

Exhibitors will, at all times, give the necessary personal attention to whatever they may have on exhibition, and at the close take entire charge of the same.

Articles placed on exhibition must not be removed until the close, except by permission of the Committee. Every facility will be afforded for the transaction of business by taking orders, but no delivery of articles sold can be made on the premises during the exhibition, except by special arrangement as above.

Though the Committee will take reasonable precaution to ensure the safety of articles sent to the Exhibition, yet they wish it to be distinctly understood that the owners themselves must take the risk of exhibiting them; and that should any article be accidentally injured, lost, or

stolen, the Committee will give all the assistance in their power towards the recovery of the same, but **will not make any payment** for the value thereof.

At the close of the Exhibition exhibitors must take charge of their exhibits and remove the same as early as possible.

LIVE STOCK.

New and commodious Buildings are provided upon the grounds for all Live Stock. Hay and grain for horses, cattle, sheep, and pigs, will be for sale upon the grounds at reasonable prices. Exhibitors will please report at once if exhorbitant prices are exacted.

FINE ARTS DEPARTMENT.

All entries in this Department will be received subject to approval by a Committee of Selection.

The Committee reserve the right to reject any work which does not come up to the required standard of excellence, and the entrance fee, in case of rejection of the whole exhibit, will be returned. Works not accepted will remain at the risk, and subject to the order of the artist.

Every work must be the work of the exhibitor, and bear the artist's signature.

All work exhibited must be original, copies being excluded, except in the case of exhibits illustrating the course of Art Education in public schools, for which a certain space will be reserved.

The works of professional artists and of amateurs will be classed and hung separately.

Amateur Artists are to be understood as those who *do not* paint or teach for a livelihood or for profit, or habitually sell or offer for sale their productions; and who have not at any time heretofore done so.

Evidence of originality to be furnished by the exhibitor whenever required by the Judges or the Committee.

No exhibitor will be awarded more than one prize in the same section of any class in this Department. Under "Extras," in each of the classes, when more than one entry of the same kind of article has been made, they will be judged as in competition for 1st and 2nd prizes, the same as though they had been in regular sections, and when but one such entry has been made, the article, if worthy, shall be awarded a 1st or 2nd prize. The Judges, however, are instructed not

to award prizes in either the regular or extra sections, unless the articles come up to the desirable standard of excellence.

Fee for each entry, 50 cents. Entries to be made not later than Saturday, the 16th of August. All pictures must be delivered at the Art Department not later than Friday, the 10th of September.

MACHINERY.

All machinery in motion, except portable, must be exhibited in the Machinery Hall if required, steam power and shafting for which will be furnished.

The main shafting in this Hall must not be interfered with or taken apart. Exhibitors must therefore provide themselves with loose pulleys.

All exhibits of machinery in this building must be placed in motion, and, if possible, kept in operation at regular work.

MANUFACTURES AND INDUSTRIAL DEPARTMENT.

The prize list in this Department has been framed with a special view to securing a full exhibit in every branch of industry, and while the Exhibition is in most classes open to the world, in some the premiums are open to Canadian manufacturers only.

Manufacturers are requested to furnish with the articles exhibited, a statement of the quantity they can produce, or supply, and the price, for the information of the Judges, whose decision will be based on the combination of quality, style, and price, and the adaptation of the article to the purpose or purposes for which it is intended.

Manufactured articles, which have been awarded prizes at Provincial Exhibitions in former years, shall not be entered in competition for the prizes named in the prize list for this year, but shall be awarded diplomas, if, in the opinion of the Judges, such articles are superior to any others exhibited, and are deemed worthy of the same. The display in this Department will, beyond doubt, be the largest, best and most interesting that has ever been made in Canada.

LADIES' WORK.

All articles competing in this class must be the work of the exhibitor, strictly the production of ladies, and entered in the name of such.

RAILWAYS, STEAMBOATS, AND CUSTOMS.

Favorable arrangements have been made with all the Railroad and Steamboat Companies for the conveyance of passengers and articles to and from the Exhibition at greatly reduced rates.

Arrangements have also been made with the Customs Department for the admission of cattle and articles from foreign countries for exhibition free of duty on giving the customary bond.

PAYMENT OF PRIZES.

The Treasurer will be prepared to commence paying the premiums at his office on the grounds for all classes immediately after the close of the Exhibition.

Parties who shall have prizes awarded them are particularly requested to apply for them before leaving Montreal, or leave a written order with some person to receive them, stating the articles for which prizes are claimed.

Persons entitled to cash premiums must apply for them at the Secretary's office, who will give *Orders on the Treasurer* for the amount. These orders must be endorsed, as they will be payable to *order* not to *bearer*, and on presentation to the Treasurer, properly endorsed, will be paid either in cash, or by cheque on the Bank.

Orders for premiums not applied for as above, will be given by the Secretary, and the amount forwarded by the Treasurer, on receipt of proper instructions.

All persons to whom prizes are awarded must apply to the Secretaries of the Committee for payment thereof, on or before the 30th day of November following Exhibition, or such prizes will be forfeited.

JUDGES.

The Judges will be appointed by the Committee and will receive a circular informing them of the fact, and inviting them to act.

In case any person accepts as Judge, and finds he cannot fulfil the duties, he will please notify the Secretary immediately of such inability, that all vacancies may be promptly filled.

No person will be allowed to act as Judge who is in any way interested in the articles to be examined.

Judges in all the classes, except for Live Stock, Poultry, Agricultural and Dairy Products, are requested to report themselves at the Secretary's office on the grounds, presenting their circular of appointment, at 9 o'clock, a. m., on Tuesday, September 14th, when they will be furnished with badges. They will also be furnished with blank prize tickets, which they must fill up and affix in each section as soon as they shall have finally determined their awards.

Judges on Live Stock, Poultry and Dairy Products, are requested to report themselves at the Secretary's office on the grounds, presenting their circular of appointment, at 9 o'clock, a. m., on Tuesday, September 21st.

Judges are requested to inform the Secretary of their presence, and apply to him in all cases of doubt or difficulty.

It is desired that all the Judges of each Class go together to hand in their report, instead of sending it by one of their number, in order that cases of error or doubt may be more promptly and easily made right.

Judges will please sign and hand in their lists of awards to the Secretary as soon as possible. They are requested to report fully upon all objects of interest and value, and to make such recommendations as circumstances or their experience may suggest.

In the absence of competition in any section, or if the stock or articles exhibited be of inferior quality, the Judges will award only such premiums as they think the articles deserving of. They will exercise their discretion as to whether they will award the first, second, third, or any premium.

In addition to the stated premiums offered for articles enumerated in the list, the Judges are authorised to recommend premiums for such articles, not enumerated, as they may consider worthy, and the Committee will determine the amount of premium. The Judges may also distinguish such animals or articles as they consider deserving of notice, but which have not received prizes, by ticket with the words "Highly Commended," or "Commended," upon them. These tickets will not entitle the holder to any money payment.

Under "Extras" in each of the classes, when more than one entry of the same kind of article has been made, they will be judged as in competition for first and second prizes, the same as though they had been in regular sections, and when but one such entry has been made, the article, if worthy, shall be awarded a first or second prize. The Judges, however, are instructed **not to award prizes** in either the "regular" or "extra" sections of any class, unless the articles come

up to the desired "standard of excellence." No award of prize for Extras will be paid until sanctioned by the Committee.

Each award must be written in a plain, careful manner, on the blank page opposite the number of the entry in the entry book.

In the Fine Arts and Mechanical Departments, Diplomas may be awarded, in addition to the money prizes, to any specimen evincing great skill in its production, or deemed otherwise worthy of such a distinction, on its being recommended by the Judges, and approved of by the Committee, to whom all such matters shall be referred.

Exhibitors can ascertain from the Superintendents of the several Departments when the Judges may be expected to examine their animals or articles. No complaint or appeal based upon the statement that the Judges have overlooked animals or articles, will be considered.

All protests must be *in writing*, must state plainly the cause of complaint or appeal, and must be delivered to the President or Secretary, within six hours after the cause of protest.

The Judges are expected in the execution of their duties to be careful to act with the most rigid impartiality; and make their entries in a clear and conspicuous manner, in all cases of doubt or difficulty referring freely to the Secretary, or to the Committee.

Any person who shall attempt to interfere with the Judges while in the discharge of their duties, or who shall afterwards, on the Exhibition Grounds, use any contemptuous or abusive language to any judge in consequence of any award made by him, shall forfeit his right to any premiums to which he might otherwise be entitled, and shall be excluded from exhibiting for one year thereafter. Judges are particularly requested to immediately report any breach of this rule.

Upon the discovery of any fraud, deception, or dishonest practice, either in the preparation, ownership, or of any representation concerning any animal or article exhibited, which may have affected, or may have been intended to affect, the decision of the Judges, the Committee have the power to withhold the payment of any prize awarded, and may prohibit any such party or parties from exhibiting in any class for one or more years, and may also publish the names of such persons or not as may be deemed most expedient.

MISCELLANEOUS.

Exhibitors must make themselves acquainted with the Prize List Regulations and requirements, and be sure in what classes and divisions their entries properly belong.

If any person, through ignorance of the regulations, shall bring things to the exhibition without having entered them at the proper time, the same may, in the discretion of the Committee, be allowed to be brought upon the grounds, and so placed that they may be examined by the public, but shall not be classified, nor shall any official examination of them be made or premiums awarded.

Where space has been awarded to any exhibitor the Committee reserve the right, in case any such exhibitor shall fail to make or maintain a creditable display, to declare the space allotted to him forfeited.

The Committee reserve the right to prescribe the dimensions of all signs, and generally to direct the arrangement of articles on exhibition, so far as the same may be necessary to secure harmony and an attractive appearance.

All prize cards which have been affixed must be displayed during the Exhibition. Any infraction of this rule will incur the forfeiture of any premium awarded.

The contractor for the supply of refreshments at the Restaurant Fodder, &c., and all persons keeping refreshment stands, must lay in their supplies before 9 o'clock a.m. each day.

The Committee on being made aware of any fraud having been committed by any exhibitor, in the entry of any stock or goods in competition for prizes at any exhibition, have the power of withholding the payment of any prizes that may have been awarded by the Judges to such exhibitors, on such fraudulent or any other entries made at any such exhibition.

If any person wilfully injures or destroys any property within the Exhibition grounds, or hinders or obstructs the officers or servants of the Committee, or any policeman or constable duly appointed, in the execution of his duty, or gains admission to the said grounds contrary to the rules, he shall be liable to a fine of not less than one or more than twenty dollars.

The officers of the Committee shall enforce these Rules, and also prohibit and prevent all kinds of gambling, or mountebank performances, exhibitions or shows, and also regulate or prevent the huckstering or trafficking in fruits, goods, wares or merchandise on the Exhibition Grounds, or within three hundred yards thereof; and any person who, after due notice of such rules, violates the same, shall be liable to be removed by the officers, or policemen.

FIRE AND POLICE PROTECTION.

Every possible precaution will be made to guard against fire; and with the precautions taken it is believed the danger of such an occurrence is very remote, but exhibitors desiring insurance must give the matter their personal attention.

An ample police force, detailed for the purpose by the city, will be on duty night and day during the continuance of the Exhibition. A full corps of watchmen will also be present at all times; but exhibitors are expected to exercise constant supervision over their articles on exhibition, as the Committee will not be responsible for loss or damage by theft, fire, or otherwise. Small and valuable articles should be exhibited in show-cases, which may be securely locked when desirable.

INQUIRIES.

Inquires as to the Exhibition and its arrangements before the opening should be addressed to the Secretaries, at Montreal. During the Exhibition, inquiries may be made at the Business Office, and every officer will, when applied to, either furnish the information sought or refer the question to the proper officer. The officers may be known by their respective badges.

THE PRESS.

Ample accommodation will be provided for members of the Press, and all necessary information will be promptly furnished them.

TELEGRAPH AND POST OFFICES.

The Montreal and Dominion Telegraph Companies will probably have offices on the grounds; and a Post office will also be provided for the delivery and despatch of letters. Telephone communication will also be established with the City.

VISITORS.

Visitors may be assured of finding on the grounds everything necessary to the convenience and comfort of young or old, during the entire day. An ample restaurant and lunch rooms managed by experienced caterers, and under the supervision of the Committee, as to price and

quality of food, will serve meals and refreshments during hours of exhibition at reasonable rates. Baggage rooms for the deposit of satchels, cloaks, &c., and in charge of responsible parties, are conveniently located for the accommodation of visitors. The hotels of the city, ample for any occasion, will adhere to their regular rates ; and the city authorities will co-operate with the officers of the Committee in every practicable manner, to ensure the safety and contribute to the pleasure of visitors.

HOW TO REACH THE GROUNDS.

The grounds are most beautifully located on Mount-Royal Avenue, on the north western outskirts of the city, and from them a splendid view of Montreal, and the River St. Lawrence, with the surrounding country can be obtained. They are easy of access and can be reached in a few minutes by Street Railway Cars.

**Read the above Rules carefully and send in your Entries
as early as possible, and be sure that all
Fees accompany the same.**



CLASSIFICATION.

AGRICULTURAL DEPARTMENT.

1st Class.	Page.		Page.
Thoroughbred Horses	1	Southdowns	7
Roadster Horses	1	Fat Sheep of any breed	7
Carriage Horses	2	4th Class.	
Clydesdales	2	Pigs, Small Breed, Improved Berk-	
Percherons & Suffolks ... <i>(extra)</i>	2	shires	8
Horses for Agricultural purposes		Suffolks and other Small Breeds ...	8
exclusive of Clydesdales, Suf-		Essex	8
folks & Percherons	2	Large Breeds — Yorkshires and	
Hunters	2	other Large Breeds	9
Heavy Draught Horses, exclusive		5th Class.	
of Clydesdales, Suffolks & Per-		Poultry	9
cherons	2	Pigeons	10
Shetland Ponies	3	Rabbits	10
2nd Class.		6th Class.	
Cattle—Durhams or Short Horns	3	Agricultural Implements for Ex-	
Herefords	4	hibition only	11
Devons	4	Agricultural Implements	12
Ayrshires	4	Agricultural Implements & Tools	
Galloways	5	chiefly for hand use... ..	13
Jerseys or Alderneys	5	7th Class.	
Grade Cattle (See Errata bottom		Agricultural Productions—Grains	
page 3) <i>(extra)</i>		and Seeds	14
Fat & Working of any breed ...	6	8th Class.	
3rd Class.		Dairy Products	15
Sheep—Leicesters	6	9th Class.	
Cotswolds	7	Honey, Sugar, &c.	16
Other long woolen Sheep	7		

INDUSTRIAL DEPARTMENT.

Class	Page.	Class	Page
I. Cabinet ware, Wood & Hol-	18	VIII. Chemical Manufactures &	
low ware, Brushes, &c. ...		Preparations, Oils, Var-	
II. Carriages, Sleighs and parts	20	nishes, &c.	32
thereof		IX. Fine Arts—Pictures in Oil,	
III. Machinery, Metal Castings,		Water Colors & Crayons,	
Manufactures of Metal,		Architectural, Mechanical	
Tools & Fittings, Hardware	21	and other Drawings, Sculp-	
&c.		ture, Statuary, Engravings,	
IV. Coppersmith's, Tinsmith's,		Lithography, Penmanships,	
Wire, Brass, Gold and Sil-		Materials used in Art, &c. 33	
ver Work	26	X. Musical Instruments... ..	35
V. Building materials, Paint-		XI. Canadian Economic Geolo-	
ing, Work in Marble,		gy, Natural History, &c. ...	36
Bricks, Floor tiles, Slates,		XII. Groceries, Provisions, Soaps,	
Glass, Pottery, &c.	27	Tobaccos, Crackers, Starch,	
VI. Leather, Saddlery, Hose ...	28	&c.	37
VII. Paper, Printing, Bookbind-		XIII. Woollen, Flax and Cotton	
ing, Manufactures of Paper,		Goods, Furs, Wearing Ap-	
&c.	31	parel, &c.	39
		XIV. Ladies Department	41
		XV. Domestic Manufactures. 42	

PRIZE LIST.

AGRICULTURAL DEPARTMENT.

Live Stock, Implements, Agricultural Products, &c.

COMPETITION OPEN TO THE WORLD.

1ST CLASS.—HORSES.

Thorough-Bred Horses.

(Pedigree to be produced in this class.)

SECT.	1st.	2nd.	3rd.
1. Stallion, 4 years old and upwards	\$30	\$25	\$15
2. Stallion, 3 years old	25	15	10
3. Stallion, 2 years old	15	10	5
4. Yearling Colt	10	6	4
5. Filly, 3 years old	15	10	5
6. Filly, 2 years old	12	8	5
7. Yearling Filly	8	6	4
8. Brood Mare with Foal by her side	20	12	6

Roadster Horses for Driving, or the Saddle, 15½ hands and under.

1. Stallion, 4 years old and upwards	30	20	10
2. Stallion, 3 years old	20	15	10
3. Stallion, 2 years old	15	10	5
4. Filly, 3 years old	15	10	5
5. Filly, 2 years old	12	6	4
6. Brood Mare with Foal by her side	20	15	10
7. Pair matched Horses (geldings or mares), in harness	20	15	10
8. Single Horse (gelding or mare), in harness ...	15	12	8

**Carriage Horses—Animals 3 years old and upwards to be
over 15½ hands.**

SECT.	1st.	2nd.	3rd.
1. Stallion, 4 years old and upwards	30	20	10
2. Stallion, 3 years old	20	15	10
3. Stallion, 2 years old	15	10	5
4. Carriage Filly, 3 years old	15	10	5
5. Filly, 2 years old	12	6	4
6. Brood Mare with Foal by her side	20	15	10
7. Pair matched Carriage Horses (geldings or mares)	15	12	8
8. Pair matched Carriage Horses (geldings or mares) under 15½ hands	20	15	10
9. Single Carriage Horse, (gelding or mare) in harness	15	12	8
10. Saddle Horse (gelding or mare), not over 16 hands	15	12	8
11. Hunter in Saddle over Hurdles,	12	8	4

**Horses for Agricultural purposes exclusive of pure Clydesdales
and Suffolks and Percherons.**

1. Stallions, 4 years old and upwards	20	15	10
2. Stallion, 3 years old	15	10	6
3. Stallion, 2 years old	12	8	6
4. Filly, 3 years old	15	10	5
5. Filly, 2 years old	12	8	4
6. Brood Mare, over 1300 lbs., with Foal by her side	20	12	6
7. Matched farm Team (geldings or mares), in harness	20	15	10

**Heavy Draught Horses, exclusive of Clydes, Percherons,
and Suffolks.**

1. Heavy Draught Stallion, 4 years old and upwards, under 1300 lbs	25	15	10
2. Stallion, 3 years old	15	10	6
3. Stallion, 2 years old	10	8	4
4. Filly, 3 years old	15	10	5
5. Filly, 2 years old	12	8	4
6. Brood Mare, under 1300 lbs, with Foal by her side	20	12	6
7. Span of Heavy Draught Horses, (geldings or mares)	20	15	10

Secr.

Clydesdales.

	1st.	2nd.	3rd.
1. Stallion, 4 years old and upwards	\$30	25	15
2. Stallion, 3 years old	25	15	10
3. Stallion, 2 years old	15	10	5
4. Yearling Colt	10	6	4
5. Filly, 3 years old	15	10	5
6. Filly, 2 years old	12	8	5
7. Yearling Filly	8	6	4
8. Brood Mare with Foal by her side	20	12	6

Percherons.

1. Stallion, 4 years old	\$30	25	15
2. Stallion, 3 years old	25	15	10
3. Stallion, 2 years old	15	10	5
4. Yearling Colt	10	6	4

Suffolks.

1. Stallion 4 years old and upwards	30	25	15
2. Stallion 3 years old	25	15	10
3. Stallion 2 years old	15	10	5
4. Yearling Colt	10	6	4

ERRATA.

Bottom of page 5 corrected as follows :

		Grade Cattle.		
Secr.		1st.	2nd	3rd.
1.	Grade Cow, 4 years old and upwards... ..	\$12	8	4
2.	Grade Cow, 3 years old	10	6	3
3.	Heifer, 2 years old	8	4	2
4.	Heifer, 1 year old	6	3	2

Sheetland Ponies.							1st.	2nd.	4rd.
SECT.									
1.	Stallions	5	3	0
2.	Mares	5	3	0

Ponies over Hurdles 5 3 0

No Horses will be allowed to compete in more than one class or section.

In making entries, the Breed, breeder's name, if known ; the owners' name and full address ; the name of animal, if named ; and the color, age and sex must be stated.

Of Horses, over four years old, give the height and weight, and state whether the weight is estimated or by the scales ; the measured height must be given, and will be taken as the height in shoes, unless otherwise stated.

In the class for Blood Horses, full Pedigree properly certified, must accompany the entry. No animal will be allowed to compete as pure bred unless they possess regular Stud Book Pedigrees, or satisfactory evidence produced that they are directly descended from such stock.

No Horse will be allowed a premium unless sound, except in the case of Stallions and Brood Mares injured by accidents which do not lessen their usefulness.

Horses must be shown uncovered, and in such manner as the Judges may require or allow ; and if exhibitors refuse to submit to the proper requirement of the Judges, their animals will be ruled out.

As Horses possessing no merit whatever and not worthy of exhibition have in some cases heretofore been entered merely to secure stabling, the Committee in charge of this Department is empowered, when any cases of this kind are reported to them, at once to order the animals, so entered, out of the grounds, and the entry money paid for such animals, shall be forfeited.

2ND CLASS.—CATTLE.

Durhams.

1.	Bull, 4 years old and upwards	40	30	20
2.	Bull, 3 years old	30	20	10
3.	Bull, 2 years old	25	15	8
4.	Bull, 1 year old	15	10	5

3rd.
4
3
2
2

PRIZE LIST.

SECT.	1st.	2nd.	3rd.
5. Bull calf (under one year)	10	8	4
6. Cow, 4 years old and upwards	30	20	10
7. Cow, 3 years old	25	15	8
8. Heifer, 2 years old	15	10	5
9. Heifer, 1 year old	10	8	4
10. Heifer Calf (under one year)	10	8	4
11. Herd of Durham Cattle, consisting of one Bull and five Females, of any age, bred and owned by exhibitor.—This prize will not be awarded unless three Herds compete	50	0	0

Herefords.

1. Bull, 4 years old and upwards	25	15
2. Bull, 3 years old	25	15
3. Bull, 2 years old	15	10
4. Bull, 1 year old	10	8
5. Cow, 4 years old and upwards	15	10
6. Cow, 3 years old	15	10
7. Heifer, 2 years old	10	5
8. Heifer, 1 year old	8	4

Devons.

1. Bull, 4 years old and upwards	25	15
2. Bull, 3 years old	25	15
3. Bull, 2 years old	15	10
4. Bull, 1 year old	10	8
5. Cow, 4 years old and upwards	15	10
6. Cow, 3 years old, Medal, and	15	10
7. Heifer, 2 years old	10	5
8. Heifer, 1 year old	8	4

Ayrshire.

1. Bull, 4 years old and upwards	30	25	15
2. Bull, 3 years old	30	25	15
3. Bull, 2 years old	20	15	8
4. Bull, 1 year old	15	10	6
5. Bull Calf (under one year)	10	8	4

PRIZE LIST.

5

SECT.	1st.	2nd.	3rd.
6. Cow, 4 years old and upwards	20	15	10
7. Cow, 3 years old	20	15	10
8. Heifer, 2 years old	15	12	8
9. Heifer, 1 year old	12	8	6
10. Heifer Calf (under one year)	8	6	4
11. Herd of Ayrshire Cattle, consisting of one Bull and five Females, of any age, bred and owned by the Exhibitor.—This prize will not be awarded unless five Herds compete ...	40	0	0

Galloways.

1. Bull, 4 years old and upwards	25	15
2. Bull, 3 years old	25	15
3. Bull, 2 years old	15	10
4. Bull, 1 year old	10	8
5. Cow, 4 years old and upwards	15	10
6. Cow, 3 years old	15	10
7. Heifer, 2 years old	10	5
8. Heifer, 1 year old	8	4

Jersey or Alderney Cattle.

1. Bull, 3 years old and upwards	25	15	10
2. Bull, 2 years old	15	10	5
3. Yearling Bull	12	8	4
4. Cow, 3 years old and upwards	15	10	6
5. Heifer, 2 years old... ..	12	8	4
6. Yearling Heifer	8	5	3
7. Female of any age, Dominion Bronze Medal			
8. Herd of Jersey or Alderney Cattle, consisting of one Bull and five Females, of any age, bred and owned by the Exhibitor.—This prize will not be awarded unless 3 Herds compete. 40	0	0	0

Grade Cattle.

1. Grade Cow, 4 years old and upwards	30	20	15
2. Cow, 3 years old	25	20	15
3. Heifer, 2 years old	20	15	10
4. Heifer, 1 year old	15	10	5

Fat and Working Cattle, any Breed.						1st.	2nd.	3rd
SECT.								
1.	Fat Ox or Steer	12	8	4
2.	Fat Cow or Heifer	12	8	4
3.	Pair of working Oxen	20	10	8	4

In making entries, the breed, the breeders' name if known; the owner's name and address in full; and the name, color, age and sex of animal must be stated.

In pure breed classes a certificate of Herd Book or Registered Pedigree, or a sufficient reference to the Herd Book in which they are registered must accompany the application for exhibition.

No animal may compete in more than one class or division except for the herd prizes. All animals will be shown in the rings, and exhibitors must be ready to bring them out when called for.

The exact ages of young animals must be stated on the cards, and it will be taken into consideration by the Judges in making their awards; and any person understating the age of an animal will forfeit the premium to which he might otherwise be entitled.

A statement to be produced to show the breeding of grade animals.

Young animals may compete, if the exhibitor thinks fit, in older classes than that to which they properly belong; but the exhibitor must choose the section he will compete in when making the entry; he shall not change to another section afterwards, and no animal will be allowed to compete in more than one of the foregoing 'sections, except when competing in the Herds.

Cows in any of the above classes must be giving milk at the time of the exhibition, or be evidently well gone in calf.

An animal will not be allowed to compete as a three year old cow unless she has had a calf, or is evidently in calf; but a two year old animal having had a calf, will be allowed to compete as a two year old heifer, if the owner thinks fit.

Prizes will be awarded to animals of other breeds than those above mentioned, if deemed worthy.

3RD CLASS.—SHEEP.

Leicesters.

1.	Ram, two shears and over	12	8	4
2.	Shearling Ram	12	8	4
3.	Ram Lamb	8	4	2

PRIZE LIST.

7

SECT.		1st.	2nd.	3rd.
4.	Two Ewes, 2 shears and over	12	8	4
5.	Two shearling Ewes	12	8	4
6.	Two Ewe Lambs	8	4	2

Cotswolds.

7.	Ram, two shears and over	12	8	4
8.	Shearling Ram	12	8	4
9.	Ram Lamb	8	4	2
10.	Two Ewes, 2 shears and over	12	8	4
11.	Two Shearling Ewes	12	8	4
12.	Two Ewe Lambs	8	4	2

Other Long Wooled Sheep.

13.	Ram, two shears and over	12	8	4
14.	Shearling Ram	12	8	4
15.	Ram Lamb	8	4	2
16.	Two Ewes, 2 shears and over	12	8	4
17.	Two Shearling Ewes	12	8	4
18.	Two Ewe Lambs	8	4	2

Southdowns.

19.	Ram, two shears and over	12	8	4
20.	Shearling Ram	12	8	4
21.	Ram Lamb	8	4	2
22.	Two Ewes, 2 shears and over	12	8	4
23.	Two Shearling Ewes	12	8	4
24.	Two Ewe Lambs	8	4	2

Fat Sheep of any Breed.

25.	Best two Wethers	10	6	3
25.	Best two Ewes	10	6	3

In making entries, the breed, breeder's name, owner's name and address in full, with age and sex of the animals must be given.

Sheep must be closely shorn on or after the 1st of May, and the date of shearing shall form part of the entry certificate, *and the atten-*

tention of exhibitors is particularly called to this rule, as it will be strictly adhered to, and Judges are requested not to award any sheep that have not been shorn in accordance with this rule, and further, that Judges be guided in their awards more by purity of blood, than size of sheep and quantity of wool.

Ewes, two shears and over, in all classes, except Fat Sheep, must have raised lambs the present season, and the fact of having done so must be stated in the entry certificate.

Sheep that have been shown in other classes cannot compete as Fat Sheep.

4TH CLASS.—PIGS.—SMALL BREEDS.

Improved Berkshires.

SECT.		1st.	2nd.	3rd.
1.	Boar, over 2 years	15	10	5
2.	Boar, over 1 year and under 2 years	15	10	5
3.	Boar, over 6 months and under twelve months	15	10	5
4.	Boar, under six months old	12	8	4
5.	Sow, over 2 years	15	10	5
6.	Sow, over 1 year and under 2 years	15	10	5
7.	Sow, over 6 months and under 12 months	15	10	5
8.	Sow, under 6 months	12	8	4

Suffolks and other Small Breeds.

1.	Boar, over 2 years	15	10	5
2.	Boar, over 1 year and under 2	15	10	5
3.	Boar, over 6 months and under 12	15	10	5
4.	Boar, under 6 months	12	8	4
5.	Sow, over 2 years	15	10	5
6.	Sow, over 1 year and under 2 years	15	10	5
7.	Sow, over 6 months and under 12 months	15	10	5
8.	Sow, under 6 months	12	8	4

Essex Pigs.

1.	Boar, over 2 years	15	10	5
2.	Boar, over 1 year and under 2	15	10	5
3.	Boar, over 6 months and under 12	15	10	5
4.	Boar, under 6 months	12	8	4

Sect.	1st.	2nd.	3rd.
5. Sow, over 2 years	15	10	5
6. Sow, over 1 year and under 2	15	10	5
7. Sow, over 6 months and under 12 months	15	10	5
8. Sow, under 6 months	12	8	4

LARGE BREEDS.

Yorkshire and other Large Breeds.

1. Boar, over 2 years	15	10	5
2. Boar, over 1 year and under 2 years	15	10	5
3. Boar, over 6 months and under 12	15	10	5
4. Boar, under 6 months	12	8	4
5. Sow, over 2 years	15	10	5
6. Sow, over 1 year and under 2	15	10	5
7. Sow, over 6 months and under 12	15	10	5
8. Sow, under 6 months	12	8	4

The Breed, Breeder's Name and Owner's Name and Address in full with precise age of animals must be given when making entries.

5TH CLASS.—POULTRY, &C.

1. Pair Dorkings, white	3	2
2. Pair Dorkings, silver grey	3	2
3. Pair Dorkings, coloured	3	2
4. Pair Polands, white	3	2
5. Pair Polands, golden	3	2
6. Pair Polands, silver	3	2
7. Pair Polands, white-crested, black	3	2
8. Pair Plymouth Rock	3	2
9. Pair Brahmas, light	3	2
10. Pair Brahmas, dark	3	2
11. Pair Cochins, buff	3	2
12. Pair Cochins, white	3	2
13. Pair Cochins, Partridge	3	2
14. Pair Houdans	3	2
15. Pair Game Fowls, black-breasted or other reds	3	2
16. Pair Game Fowls, duckwing	3	2
17. Pair Game Fowls, any other variety	3	2
18. Pair Leghorns, white	3	2

Sect		1st.	2nd.
19.	Pair Leghorns, brown	3	2
20.	Pair Spanish Fowls	3	2
21.	Pair Hamburgs, golden-pencilled	3	2
22.	Pair Hamburgs, silver-pencilled	3	2
23.	Pair Hamburgs, golden-spangled	3	2
24.	Pair Hamburgs, silver-spangled	3	2
25.	Pair Hamburgs, black	3	2
26.	Pair Bantams, Seabright	3	2
27.	Pair Bantams, black-breasted or other reds	3	2
28.	Pair Bantams, duckwing game	3	2
29.	Pair Bantams, any other variety	3	2
30.	Pair Turkeys, any colour	3	2
31.	Pair Turkeys, wild	3	2
32.	Pair Geese, Bremen	3	2
33.	Pair Geese, Toulouse	3	2
34.	Pair Geese, English grey and common	3	2
35.	Pair Geese, any other kind	3	2
36.	Pair Ducks, Aylesbury	3	2
37.	Pair Ducks, Rouen	3	2
38.	Pair Ducks, any other kind	3	2
39.	Pair Guinea Fowls	3	2
40.	Pair Pea Fowls	3	2
41.	Pair any other variety of Fowls, not included in these sections	3	2
42.	Collection, Poultry, apart from all other entries ...	5	0

Pigeons.

43.	Pair Carrier, Pouter, and Tumbler Pigeons	2	1
44.	Jacobins, Fantails, Barbs, and Trumpeters	2	1
45.	Collection of Pigeons, any other kinds	2	1

Rabbits.

46.	Pair long-eared Rabbits	2	1
47.	Pair Common Rabbits	2	1

As the Committee wish to promote the Poultry interest by encouraging the careful breeding of choice specimens and the improvement of the common stock of the country, thereby adding to the merchantable value thereof, exhibitors are requested to affix a selling price to all specimens at the time of making their entries.

All specimens must be exhibited in their natural condition. The card of the Committee must be placed on each coop, cage or specimen, giving the name of exhibitor, variety of exhibit, and if for sale, the price. No other card will be allowed upon the coop, cage or specimen, until the premiums have been awarded-

Coops will be provided by the Committee, but the poultry must be fed and taken care of by the Exhibitor.

6TH CLASS.—AGRICULTURAL IMPLEMENTS.

Agricultural Implements and Machines for Exhibition only.

In this class, by request of numerous manufacturers, entries of the undermentioned articles will be received for exhibition only, not in competition for Prizes. The articles must be entered in the books in the same manner as articles in other classes, and they will be provided with ample space for exhibition in the same manner as if competing for prizes.—But should the Committee see fit, they may, upon the recommendation of the Judges, award Special Prizes to Implements of peculiar merits.

1. Grain Drill.
2. Seed Drill for sowing two or more drills of Turnips, Mangels or other Seeds.
3. Broad-Cast Grain and Seed Sower.
4. Mowing Machine.
5. Reaping Machine.
6. Combined Mower and Reaper.
7. Self-Binding Reaper.
8. Horse-Power Thresher and Separator.
9. Vibrator Thresher and Separator.
10. Smut Machine.
11. Clover Cleaning Machine.
12. Field or two Horses Cultivator, iron.
13. Two-Horses Cultivator, wood.
14. Two Furrow Plough.
15. Double Shear Trench Plough.
16. Cylinder Cultivator.
17. Draining Plough or Ditching Machine, for digging drains.
18. Implement or Machine for Cutting, Pulling, or otherwise harvesting Peas.

19. Portable Grist Mill.
20. Grain Cracker.
21. Corn and Cob Crusher.
22. Flax Pulling Machine.
23. Two-Horses Power for general purposes for farmers' use.
24. Drag Saw.
25. Hay Baling Press.

Agricultural Implements.

RULE.—It shall be distinctly understood that all unnecessary and inappropriate ornamentation of Agricultural Implements is expressly prohibited, and Judges are hereby directed not to award prizes to implements so finished or adorned.

SECT.	1st.	2nd.	3rd.
1. Double Mould Plough	\$10	\$ 7	\$ 4
2. Gang Plough	12	8	4
3. Iron Beam Plough with Steel Mould Board and Wooden Handles	12	8	4
4. Iron Plough	15	10	5
5. Subsoil Plough	12	8	4
6. Wooden Plough	12	8	4
7. Pair of Iron Harrows	10	8	6
8. Pair of Wooden Harrows	6	4	2
9. Iron Roller	6	4	2
10. Wooden Roller	4	3	2
11. Horse Hoe, single horse cultivator, iron	4	3	2
12. Horse Hoe, single horse cultivator, wood	4	3	2
13. Horse Rake, without wheels	4	3	2
14. Sulky Horse Rake	6	4	2
15. Improved Liquid Manure Drill for drilling two or more rows of liquid with turnips, mangels and either on the ridge or flat	10	8	6
16. Machine for cutting roots for Stock	8	6	4
17. Potato Digger	10	5	0
18. Straw Cutter	8	6	4
19. Stump Extrator	8	4	0
20. Cider Mill and Press	8	4	0
21. Collection of Agricultural Implements for field use	10	0	0
22. Extras.			

Agricultural Tools and Implements, chiefly for hand use.

SUCT.		1 st .	2 nd .	3 rd .
	1. Machine for making drain tiles	15	10	0
	2. Set Draining Tools	6	4	2
	3. Assortment of Drain Tiles	4	3	2
	4. Half-dozen Spades	3	2	1
	5. Half-dozen Steel Hoes	3	2	1
	6. Half-dozen Steel Shovels	3	2	1
	7. Half-dozen Grain Scoops	3	2	1
	8. Half-dozen Manure Forks	3	2	1
	9. Half-dozen Spading Forks	3	2	1
	10. Seed Drill, or Barrow, for Turnips, &c ...	4	3	2
	11. Machine for Sowing Grass Seeds	4	3	2
	12. Garden Walk, or Lawn Roller	3	2	1
	13. Half-dozen Scythe Snaiths	3	2	1
	14. Grain cradle	2	1	0
	15. Half-dozen Grass Scythes	3	2	2
	16. Half-dozen Cradle Scythes	3	2	1
	17. Lawn mowing machine	6	3	0
	18. Half-dozen Hay Rakes	3	2	1
	19. Half-dozen Hay Forks	4	2	1
	20. Straw or Barley Fork, wood	2	1	0
	21. Fanning Mill	10	8	6
	22. Cheese Press	8	6	0
	23. Churn	3	2	1
	24. Cheese Vat	8	5	3
	25. Assortment of Factory Milk-cans and Pails ...	5	3	2
	26. Collection of Dairy Ustensils	10	6	0
	27. Half-dozen Axe Handles	2	1	0
	28. Set Horse Shoes	3	2	1
	29. Ox-yoke and Bows	2	1	0
	30. Farm Gate	3	2	0
	31. Specimen Farm Fence, wood	3	2	0
	32. Specimen Wire Fencing, not less than Two Rods, erected on the ground	8	6	4
	33. Assortment of Malleable Castings, for Agricultural purposes	12	8	0
	34. Assortment Agricultural Tools for hand use, of Canadian Manufacture	10	0	0
	35. Improved Milk Pans for not less than ten cows	8	4	2
	36. Sap Evaporators for not less than 150 trees ...	8	4	2
	37. Sap Buckets	4	3	2
	38. Sap Spouts	3	2	1

Agricultural Implements must be labelled with the name of the Exhibitor, name of Machine, its use and Retail Price; and they are required to be the same in construction and finish as those sold to the farmer, and not specimens got up for Exhibition.

7TH CLASS.—AGRICULTURAL PRODUCTIONS.

Grains, Seeds, &c.				1st.	2nd.	3rd.
SECT.						
1.	White Winter Wheat, 4 minots	6	4	2
2.	Red Winter Wheat, 4 minots	6	4	2
3.	White Spring Wheat, 4 minots	6	4	2
4.	Red Spring Wheat, 4 minots	6	4	2
5.	Barley, (two rowed), 4 minots	6	4	2
6.	Barley, (six rowed) 4 minots	6	4	2
7.	Rye, 2 minots	6	4	2
8.	Oats, white 4 minots	6	4	2
9.	Oats, black, 4 minots	6	4	2
10.	Field Pease, 4 minots	6	4	2
11.	Marrowfat Pease, 2 minots	6	4	2
12.	Tares, 2 minots	6	4	2
13.	White field Beans, 2 minots	6	4	2
14.	Indian Corn in the ear, white	6	4	2
15.	Indian Corn, in the ear, yellow	6	4	2
16.	Timoty Seed, 2 minots	6	4	2
17.	Clover Seed, 2 minots	6	4	2
18.	Alslyke Clover Seed, 2 minots	6	4	2
19.	Hemp Seed, 2 minots	8	5	3
20.	Flax Seed, 2 minots	8	5	3
21.	Mustard Seed, 1 minot	6	4	2
22.	Swedish Turnip Seed, 20 lbs	6	4	2
23.	14 lbs White Belgian Field Carrot Seed	6	4	2
24.	12 lbs long Red Mangel Wurzel Seed	6	4	2
25.	12 lbs Yellow Globe Mangel Wurzel Seed	6	4	2
26.	Bale of Hops, 112 lbs	12	8	4
27.	Horse Beans, 2 minots	6	4	2
28.	Buckwheat, 4 minots	6	4	2
29.	Millet, 2 minots	6	4	2

All the grain, seeds and other agricultural products must be the growth of the year 1880, except clover and grass seeds, which may be the growth of 1879.

The names of the different varieties of wheat and other grain and seeds must be inserted by each Exhibitor in his list of entries.

The roots must be certified as field culture by the Exhibitor.

Roots and other Field Crops.

Sect.		1st.	2nd.	3rd.
1.	Garnet Chilis, Red, 1 1/2 minot	3	2	I
2.	Garnet Chilis, White, 1 1/2 minot	3	2	I
3.	Early Goderick Potatoes, 1 1/2 minot	3	2	I
4.	Early Rose Potatoes, 1 1/2 minot	3	2	I
5.	Any other sort, 1 1/2 minot	3	2	I
6.	Collection of Potatoes	3	2	I
7.	Swede Turnips (18)	3	2	I
8.	White Globe Turnips (18)	3	2	I
9.	Aberdeen Yellow Turnips (18)	3	2	I
10.	Twenty Roots Red Carrots	3	2	I
11.	Twenty Roots White Carrots	3	2	I
12.	Mangel Wurzel, long red (18)	3	2	I
13.	Red Globe Mangel Wurzel (18)	3	2	I
14.	Yellow Globe Mangel Wurzel (18)	3	2	I
15.	Long Yellow Mangel Wurzel (18)	3	2	I
16.	Kohl-Rabi (18)	3	2	I
17.	Sugar Beet (18)	3	2	I
18.	Parsnips (18)	3	2	I
19.	Large Pumpkins for catte (2)	3	2	I
20.	Tobacco Leaf (20 lbs.)	3	2	I
21.	Broom Corn Brush	3	2	I
22.	Flax scutched (112 lbs.)	12	8	6
23.	Hemp (112 lbs.)	12	8	6

8TH CLASS.—DAIRY PRODUCTS.

1. Three Firkins of Butter fitted for exportation, not less than 56 lbs in each furkin, made at any Butter Factory or Cremery ... \$15 \$10 \$ 5 \$ 0
2. Best Firkins of Butter, not less than 56 lbs, in shipping order, made at any private Dairy 8 6 .4 2

SECT.		1st.	2nd.	3rd.
3.	Best Butter, not less than 28 lbs, in firkin, crocks or tubs, for home use, (home consumption) 6	4	3	2
4.	Best Factory Cheese, white and colored, not less than 30 lbs 15	10	5	3
5.	Best Cheese, home made, not less than 8 lbs each 6	4	3	2
6.	Best Cream Cheese, not less than one dozen. 4	3	2	0

Only one sample of cheese can be entered from any one factory. Each sample must consist of six cheeses made in the following months, viz: Two in June, two in July, and two in August. A written declaration will be required from each competitor that the cheeses shown were made in these months. The latter also applies to creamery butter. Exhibitors in section 4 cannot compete in section 5.

9TH CLASS.—HONEY, SUGAR, ETC.

1.	Best Package of Honey in the comb, one pound or more 3	2	1
2.	Best Package of extracted Honey, one pound or more 3	2	1
3.	Best Machinery for extracting Honey 4	2	1
4.	Best colony of Italian Bees 3	2	1
5.	Best exhibition with a colony of Bees, in movable frame hive, including their public manipulation 4	2	1
6.	Best show of Bees Wax 3	2	1
7.	Best Bee hive for all purposes 3	2	1

~~Maple~~ Maple Sugar, Syrups, and domestic manufactures to be in the Industrial Department.

3rd.
2
3
2
0
ry.
hs,
ara-
ere
ter.

THE EXHIBITION
— OF THE —
MONTREAL HORTICULTURAL SOCIETY

— AND —
FRUIT GROWER'S ASSOCIATION

— OF THE —
PROVINCE OF QUEBEC,

— WILL BE —

Held in Montreal, during the period of the
Dominion Exhibition.

1
1
1
1
1
1
1
1
1
e in

Exhibitors will take note of the changes in the fees since the last Provincial Exhibition. A list of the fees for Entries in the respective Classes appears on pages ix and x. In the Machinery Hall, the rate will be 75 cts. and \$1.00 per foot, according to location.

In the Industrial Department, Diplomas may be awarded in the discretion of the Committee.

The attention of Exhibitors is particularly called to the Rules and Regulations governing the Exhibition.

INDUSTRIAL DEPARTMENT.

CLASS I.—Cabinet Ware, Wood and Hollow Ware, Brushes, &c.

Group I.—Cabinet Work and Upholstery.

SECT.	1st.	2nd.
1. Best Set Bedroom Furniture	\$20	\$10
2. do Set Bedroom Furniture, costing not over \$40	12	6
3. do Specimen of dining room Furniture, not less than three different articles	10	5
4. do Set Drawing room Furniture, not less than four different articles... ..	10	5
5. do Set cheap Drawing room Furniture, workmanship and materials to be considered ...	8	4
6. do Specimen of Furniture suitable for workingmen's dwellings	8	4
7. do Sideboard	15	10
8. do Assortment of Office Furniture	10	5
9. do Centre Table	10	5
10. do Bookcase	10	5
11. do Specimen of Carving in wood (decorative) not connected with any other article on exhibition	12	6
12. do Mantel, best wood	8	4
13. do Easy Chair (Arm)	6	4
14. do Invalid's Chair	5	3
15. do Assortment of School Furniture	10	8
16. do Assortment of Covering for Furniture ...	6	4
17. do Cornices, carved and gilt	5	3
18. do Specimen of Picture Frames	8	4
19. do Specimen of Mirror, or other carved and gilt Frames	8	4
20. do Mattresses, Hair, &c.	7	3
21. do Mattresses, Spring	7	3

Group II.—Brushes, Brooms, Washing Machines, Hollow-ware, &c.

1. Best Assortment of Hair, Cloth, Shoe, Horse, Blacklead, and Scrubbing Brushes, &c. ...	6	4
---	---	---

SECT.		1st.	2nd.
2.	do Assortment of Painter's and Whitewasher's brushes	\$6	\$4
3.	do Assortment of Corn Brooms, Dusters, &c. ...	5	3
4.	do Assortment of Tinnets for butter and lard ...	5	3
5.	do Casks, Barrels, Kegs, &c., assortment of ...	6	4
6.	do Specimen of Boxes for Cheese	4	2
7.	do Assortment of Factory made Wash Tubs and Pails	6	4
8.	do Washing Machine (Canadian)	5	3
9.	do Wringing Machine (Canadian Manufacture)	5	3
10.	do Assortment of Hollow-ware	6	4
11.	do Assortment of Clothes Pins	4	2
12.	do Assortment of Willow ware, not less than six specimens	6	4
13.	do Wooden Pump for farm, ship or other use ... Extras.	6	4

Group III.—Turners' Work.

1.	Best Assortment of 'Turners' Work for building	6	4
2.	do Assortment of 'Turners' Work for domestic purposes other than building	6	4
	Extras.		

Group IV.—Models of Steam and Sailing Vessels, Boats, &c.

1.	Best Collection of Models of Steam and Sailing Vessels	10	5
2.	do Pleasure Sail Boat	8	4
3.	do Row Boat	7	3
4.	do Wooden Canoe	5	3
5.	do Bark Canoe	5	3
6.	do Assortment of Ships blocks	5	2
	Extras.		

Group V.—Joiner work, Blinds, &c.

1.	Best Assortment of Joiners' Work	10	6
2.	do Assortment of Machine Wrought Moulding and Flooring	8	4
3.	do Specimen of Window Blinds, Sashes, doors, and Mouldings	10	5
4.	do Hall or Room Door, with architrave, design and workmanship to be considered	8	4
5.	do Collection of Specimens of Lumber. ...	7	3
	Extras.		

 CLASS II.—Carriages, Sleighs, and parts thereof.

Group I.—Carriages and Waggons.

SEBT.		1st.	2nd.
1.	Best two horse Family Carriage, 3 seats	\$10	\$6
2.	do one horse Family Carriage, 3 seats	10	6
3.	do two horse Carriage for public use, 3 seats	10	6
4.	do one horse Carriage for public use, 3 seats	10	6
5.	do Barouche	10	5
6.	do Park Phaeton... ..	8	4
7.	do Landau	8	4
8.	do Dog Cart	6	3
9.	do Double Seated Buggy	6	3
10.	do Single Seated Buggy	6	3
11.	do Trotting Buggy	5	3
12.	do Waggonette Buggy	5	3
13.	do Express Waggon, one or two horses	8	4
14.	do Bakers Waggon, one or two horses	8	4
15.	do Child's Carriage (Perambulator)... ..	5	3

 Group II.—Sleighs.

1.	Best three seated Family Sleigh	8	4
2.	do two seated Family Sleigh	8	4
3.	do Dog Cart Sleigh	6	4
4.	do Four in hand Sleigh	10	5
5.	do one seated Sleigh	6	4
6.	do Trotting Sleigh	5	2
7.	do Two Horse Sleigh Hack	10	6
8.	do One Horse Sleigh Hack	10	5
9.	do Cariole	4	2
10.	do Express Sleigh	6	3

 Group III.—Parts of Carriages and Sleighs.

1.	Best Assortment of Carriage Wheels, rims and fel- loes, unpainted, Canadian manufacture	6	4
2.	do Assortment of Spokes and Hubs	6	4
3.	do Assortment of Bent Shafts, Top Covers, Seats, Rails, &c.	6	4
4.	do Assortment of Ornaments and Trimmings for Carriages	5	3

SECT.		1st.	2nd.
5.	do Assortment of Carriage, Cart and Car Springs and Axles	\$3	\$4
	Extras		

CLASS III.—Machinery, Metal Castings, Manufactures of Metal, Tools and Fittings, Hardware, &c.

Group I.—Steam Engines.

1.	Best Stationary Steam Engine, not less than 10 horse-power	25	15
2.	do Stationary Steam Engine, from 1 to 10 horse-power	15	10
3.	do Portable Steam Engine and Boiler, in operation	12	8
4.	do Donkey Engine	10	5
5.	do Steam Fire Engine, in operation on grounds.	15	7
6.	do Model of Improved Steam Engine	5	2

Group II.—Steam Pumps, Waterwheels, Handpumps, Governors, Valves, &c.

1.	Best Steam Pump	10	7
2.	do Hand Pump, metal, for house use	7	4
3.	do Hand Pump, metal, for outdoor use	7	4
4.	do Hand Pump, metal, for ships use	5	2
5.	do Water Wheel	10	5
6.	do Steam Engine Governor	6	2
7.	do Steam Gauge	5	3
8.	do Steam Fog Whistle	7	4
9.	do Engineers Brass Work, consisting of Steam Whistles, Valves, Lubricators, Oil cups, and Hose Couplings	10	5
10.	do Steam fitter's Vice	5	2
11.	do Assortment of Circular Saws	10	5

Group III.—Metal Working Machinery, Machinist's Work, Tools, Castings, &c.

1.	Best Planer Machine for metal	8	4
2.	Best Turning Lathe for Iron work	6	3
3.	Best Turning Lathe for Brass work	6	3

SUBJ.	1st.	2nd.
4. Best Machinist's Vice	\$ 5	\$3
5. Best Steam Rock Drill	10	5
6. Best Diamond Pointed Drill	8	4
7. Best and largest assortment Machinist's Tools for working in Metal	8	4
8. Best specimen of Locomotive and Railroad Car Castings, not less than six articles, to include Locomotive Cylinder, Axle Box and Guard.	10	5
9. Best pair Railroad Car Wheels	8	4
10. Best asst. Castings for general building purposes	7	3
11. Best specimens of Casting for Millwright and Machinist's work	8	4
12. Best specimen of Shafting on length with Hangers and Couplings	7	3
13. do Collection of Scales	7	3
Extras.		

Group IV.—Wood Working Machinery.

1. Shingle Machine	8	4
2. Mortising Machine	7	3
3. Mitring Machine, power	7	3
4. Mitring Machine, foot	6	2
5. Moulding Machine	6	2
6. Planing Machine	7	3
7. Match Machine	6	2
8. Scroll Sawing Machine	7	3
9. Bevell Machinery	6	2
10. Band Saw Machinery	5	3
11. Jig Saw Machinery	5	3
12. Best Collection of Wood Working Machinery	8	4
Extras.		

Group V.—Mill and Factory Machinery.

1. Best Pegging Machine	7	3
2. do Peg Breaking Machine	7	3
3. do Treeing Machine	6	2
4. do Heel Trimming Machine	6	2
5. do Heel Burnishing Machine	6	2
6. do Edge Trimming Machine	5	2

Sect.		1st.	2nd.
7.	do Edge Burnishing Machine	\$5	\$2
8.	do Heel forming and attaching Machine ...	6	3
9.	do Sole forming Machine	5	2
10.	do Leather Splitting Machine	6	3
11.	do Shoemaker's Rolling Machine	5	2
12.	do Sciving Machine	5	2
13.	do Leather Belting Machine	6	3
14.	do Machine for making Wool Cards ...	6	3
15.	do Paper Cutting Machine	5	2
16.	do Paper Bag Machine	6	3
17.	do Book Rolling Machine	5	2
18.	do Book Binder's Press	6	3
19.	do Printing Press, power	20	10
20.	do Printing Press, hand	6	3
21.	do Dough Mixing Machine	7	3
22.	do Baker's Break Machine	6	3
23.	do Cracker Machine	8	4
24.	do Collection of Ornamental Iron Railing ...	7	3
25.	do Asst. Paper Collar Knives	5	3
26.	do Bark Mill	10	5
27.	do Brick Making Machine	8	4
28.	do Tenoning Machine	7	3
29.	do Crushing and Grinding Machine, ...	10	5
Extras.			

Group VI.—Stoves, Furnaces, &c.

1.	Best Cooking Stove for wood	5	3
2.	do Cooking Stove for coal	8	4
3.	do Cheap Cooking and Heating Stove, suitable for workmens' dwellings	6	3
4.	do Hall Stove for coal	8	4
5.	do Box Stove for wood	5	2
6.	do Coal Grate Stove	5	2
7.	do Coal Grate, with settings and fittings com- plete	6	3
8.	do Cooking Range	10	5
9.	do Hot Air Furnace	8	4
10.	do Steam or Hot Water Apparatus ...	8	4
11.	do System of Warming or Ventilating buildings, illustrated by model or drawing	5	3

SECT.		1st.	2nd.
12.	do Parlor Stove	\$5	\$2
13.	do Coal oil or Gas Stove	4	2
14.	do Specimen of Malleable Iron Castings for carriage, harness and other work	6	3
15.	do Asst. Castings for Stoves	6	3
16.	do Set Dog Irons for grate or fire place ...	4	2
17.	do Assortment of Stove Hollow-Ware, Stoves, Ranges, &c.	15	8

Group VII.—Sewing Machines, &c.

No money prizes will be given for Sewing Machines, but medals or diplomas may be awarded in the discretion of the Judges.

1.	Best Sewing Machine for Manufacturing use ...		
2.	do Sewing Machine for family use		
3.	do Sewing Machine for button holes		
4.	do Sewing Machine for embroidery		
5.	do Sewing Machine for single thread		
6.	do Sewing Machine for wax thread		
7.	do Knitting Machine	10	5
8.	do Spinning Machine	8	4

Group VIII.—Hardware, &c.

1.	Best assortment of Augurs, Bits and Boring Tools for wood	8	4
2.	do Assortment Planes	6	3
3.	do Assortment Axes and Adzes	7	3
4.	do Assortment Hammers, Mauls, and Picks	6	3
5.	do Assortment Spades and Shovels	8	4
6.	do Assortment Church Bells	8	4
7.	do Assortment Hand Bells	6	3
8.	do Assortment Fire Arms	8	4
9.	do Breech-loading Rifle	6	3
10.	do specimen Knives for Reaping and Mowing Machines	6	3
11.	do Scythes, Hoes, Rakes, and other garden and agricultural tools	10	5
12.	do Assortment of Files and Rasps	8	4

PRIZE LIST.

25

SECT.		1st.	2nd.
13.	do Assortment Carriage and Machine Bolts, and Nuts, (machine made)	\$6	\$3
14.	do Assortment Wood Screws	5	2
15.	do Assortment of Spikes, Chairs and Nails for railway and shipwork	6	3
16.	do Assortment Spikes, Nails, Brads, Tacks, &c., for builders and cabinet-makers use ...	8	4
17.	do Assortment Horse Shoe Nails, hand made	6	3
18.	do Assortment Horse Shoe Nails, machine made	6	3
19.	do Assortment Manilla Rope	5	2
20.	do Assortment Hemp Rope	5	2
21.	do Assortment Jute Rope	5	2
22.	do Assortment Twines, &c.	5	2
23.	do Silk, Salmon and Trout Lines	5	2
24.	do Salmon, Trout and Trolling Rods ...	5	2
25.	do Artificial Flies	5	2
26.	do Artificial Bait other than flies	5	2

Extras.

Group IX.—Builder's Hardware.

1.	Best Assortment edge and other tools for Carpenters and Coopers	8	4
2.	do Assortment of Builder's Hardware, consisting of door and window fittings, handles, latches, bolts, hinges, &c.	8	4
3.	do Door Locks, an assortment	7	3
4.	do Specimen of Lead and Composition pipes for gas and water	6	3
5.	do Refrigerator	6	3

Extras.

Group X.—Safes and Locks.

1.	Best Combination Safe Lock	5	2
2.	do Assortment of Locksmith's work ...	6	3
3.	do Burglar Proof Safe	15	8
4.	do Fire Proof Safe	12	7
5.	do Fire and Burglar Proof Safe combined ...	20	10
6.	do Set Vault and Safe doors	12	7

Extras.

CLASS IV.—Coppersmith's, Tinsmith's, Wire, Brass,
Gold and Silver Work.

Group I.—Copper and Brass-Finisher's Work, &c.

1.	Best Specimen of Plumber work	\$8	\$4
2.	do Specimens Beer Counter Pumps, silver plated	6	3
3.	do Specimen 3 or 4 Pull Beer Case Pump, silver	5	2
4.	do Specimen Gasfitters work	8	4
5.	do Assortment Gas-pendants and Brackets...	8	4
6.	do Assortment Coal Oil Lamps	8	4
7.	do Assortment Brass-work for building use, Knobs, Hinges, Handles, &c.	6	3
8.	do Assortment Bronze Hinges, Locks, Knobs, &c., for Builder's use,	6	2
9.	do Coppersmith's work	6	3
10.	do Mathematical Instruments	8	4
11.	do Optical Instruments	6	3
	Extras.		

Group II.—Tinsmith and Wire Work.

1.	Best assortment Wire Work	8	4
2.	do Assortment Stamped Tinware	6	3
3.	do Hand made Tinware, unpainted	5	2
4.	do Planished Tinware, assortment	5	2
5.	do Japanned Ware, plain assortment	5	2
6.	do Japanned Ware, ornamented assortment	5	2
7.	do Britannia Metal Ware	5	2
	Extras.		

Group.—III. Electroplating, Gold and Silversmith's Work.

1.	Best Specimen of Close Plating on Harness, build- ers and other fittings	6	3
2.	do Specimen of Electroplating	6	3
3.	do Specimen of Nickel-plating	6	3
4.	do Specimens of Gold and Silver Watches...	8	4
5.	do Assortment Goldsmith's work	8	4
6.	do Assortment Silversmith's work	6	3
7.	do Specimen of Hair Jewellery	6	3
8.	do Specimen of Enamelling	6	3
9.	do Specimen of Gold and Silver Leaf	5	2
	Extras.		

CLASS V.—Building Materials, Painting, Work in Marble, Bricks, Floor Tiles, Slates, Glass, Pottery, &c.

Group I.—Brick, Floor Tiles, Drain Pipes, &c.

SECT		1st.	2nd.
1.	Best Collection Plain Moulded and Bevelled Brick for building purposes	\$8	\$4
2.	do Specimen Cement for building purposes	5	2
3.	do Specimen of Flooring Tiles of Slate ...	6	3
4.	do Assortment of Ornamental Tiles,	5	2
5.	do Specimen of Roofing Slate	5	2
6.	do Assortment of School Slates and Pencils ...	5	2
7.	do Water Tank, in Slate	6	3
8.	do Manufactures of Slate, other than above assortment	8	4
9.	do Chimney piece of Slate	6	3
10.	do Tile Pipe for drainage with traps, junctions, bends, &c.	6	3
11.	do Drain Tiles for farming purposes ...	5	2
	Extras.		

Group II.—Cornices, &c., in Plaster, Clay Work, &c.

1.	Best Specimens of Pottery ware	6	3
2.	do Specimens of Stone ware... ..	6	3
3.	do Specimen of Centre Flower, in Plaster, from designs and carvings, made in Canada ...	6	3.
4.	do Cornices and other Ornaments made in Plaster from original designs and carvings, made in Canada	6	3
5.	do Composition for Paths, Cellars, Floors, &c...	5	2
6.	do Specimen of Carving in Stone for building purposes	8	4

Group III.—Painting.

1.	Best Specimen Painting in imitation of Woods and Marbles	8	4
2.	do Design in Fresco Painting for decorative purposes	10	5
3.	do Lettering on glass, in gold or silver, ...	6	3

SECT.		1st.	2nd.
4.	do Lettering on wood or other material, ...	\$6	\$3
5.	do Sign Painting, on wood or metal, design, colouring and lettering to be considered ...	6	3
6.	do Designs in hand painted window glass ...	5	2
	Extras.		

Group IV.—Work in Marble.

1.	Best Specimen Mantle piece, in Marble ...	10	5
2.	do Specimen Mantle piece, Marbleized Slate ...	8	4
3.	do Specimen Mantle piece, any other kind ...	8	4
4.	do Monument of Canadian Marble... ..	10	5
5.	do Monument of Canadian Granite	10	5
6.	do Specimen of Carving in Marble for industrial purposes	10	5

Group V.—Glassware, &c.

1.	Best Specimens of Flint Glass, pressed and plain, an assortment... ..	8	4
2.	do Specimen of Cut and Stained Glass, an assortment	8	4
3.	do Specimen of German Flint Glass ...	5	2
4.	do Specimen of common Bottle Glass, an assortment	5	2
5.	do Specimen of Stained Glass, an assortment ...	5	2
6.	do Specimen of White Composition Glass ...	5	2
7.	do Specimen of Stained Glass Windows ...	8	4
	Extras.		

CLASS VI.—Leather, Saddlery, Hose, Trunk Makers' Work, &c.

Group I.—Leather.

1.	Best 3 Sides Sole Leather	4	2
2.	do 3 Pebble Grain Leather	4	2
3.	do 3 Buff Grain Leather... ..	4	2
4.	do 3 Split Grain Leather	4	2
5.	do Enamelled Grain Leather	4	2
6.	do Patent Grain Leather	4	2

PRIZE LIST.

29

2nd.	1st.	2nd.
\$3	\$4	\$2
	4	2
3	4	2
2	4	2
	4	2
	4	2
	4	2
5	4	2
4	3	2
4	3	2
5	3	2
5	3	2
	4	2
5	2	1
	3	2

Group II.—Saddlery.

4	10	5
4	8	4
2	8	4
	6	3
2	8	4
2	6	3
2	6	3
4	6	3
	6	3
	5	2
rs'	5	2

Group III.—Saddle and Harness Stock.

2	5	2
2	5	2
2	3	1
2	8	4
2	6	3
2	4	2

Sect.		1st.	2nd.
7.	do do Skirtings for Saddles, 2 sides, ...	\$3	\$2
8.	do do Bridle Fronts and Housings,	3	2
9.	do Specimen Hose Leather, Extras.	6	3

Group IV.—Hose and Trunk Maker's Work, &c.

1.	Best Copper Rivetted Hose and Flexible Branch Pipe attached, (20 feet),	10	5
2.	do Rubber Hose,	8	4
3.	do Assortment of Rubber Belting,	6	3
4.	do do Rubber Overshoes and Boots,	10	5
5.	do do Rubber Goods other than above mentioned,	10	5
6.	do Saratoga Trunk,	8	4
7.	do Solid Leather Trunk,	8	4
8.	do Hand Valise, Leather,	5	3
9.	do Assortment of Hand, Carpet or Leather Travelling Bags,	6	3
10.	do Leather Belting, Extras.	6	3

Group V.—Boot and Shoemakers' Work, Tools, &c.

1.	Best Assortment of Gents' Hand-made Sewed Boots and Shoes,	10	5
2.	do Assortment Gents' Machine-made Boots and Shoes,	8	4
3.	do Assortment Ladies' Hand-made Sewed Boots and Shoes,	8	4
4.	do Assortment Ladies' Machine-made Boots and Shoes,	7	3
5.	do Assortment Children's Boots and Shoes, ...	6	3
6.	do do Felt Overshoes,	5	3
7.	do do Boot and Shoe Uppers,	5	2
8.	do do Shoe-makers' Lasts and Trees, ...	4	2
9.	do do Shoe Pegs,	4	2
10.	do do Ribbon Pegs, &c.,	4	2
11.	do do Shoe-maker's Tools, Extras.	6	3

CLASS VII.—Paper, Printing, Book-Binding, Manufactures of Paper, &c.

Group I.—Printing and Book-Binding.

SECT.		1st.	2nd.
1.	Best Specimen Letter-Press Book Printing, plain	\$5	\$3
2.	do Specimen Letter-Press Job Printing, ornamental	8	4
3.	do Specimen Letter-Press Job Printing in colors, exhibiting a variety of type, and skill in combination, and arrangement in colors ...	8	4
4.	do Assortment Printing Type, plain and ornamental	8	4
5.	do Specimen of Book-Binding, full morocco, gilt edge, extra	8	4
6.	do Specimen Book-Binding, full calf, marble edge	6	3
7.	do Specimen Book-Binding, half calf library ...	6	3
8.	do Specimen Merchant's Blank Book, full calf, Russia bands	6	3
9.	do Specimen Merchant's Blank Book, half calf	6	3
10.	do Assortment of School Books printed in Canada.	10	5

Group II.—Paper and Manufactures thereof.

1.	Best Assortment Writing Paper, consisting of note, letter, foolscap and folio post	8	4
2.	do Assortment of Envelopes	6	3
3.	do Book and Job Printing Paper	5	2
4.	do Specimen News Printing Paper, two qualities	5	2
5.	do Wrapping Paper, either common grey, brown or manilla	4	2
6.	do Blotting and Colored Paper	5	2
7.	do Bundle Mill Board	5	2
8.	do Bundle Straw Board	5	2
9.	do Ream Collar Board	5	2
10.	do Roll Roofing Felt, untarred	4	2
11.	do Assortment Paper Collars, Cuffs, Fronts, &c.	6	3
12.	do Paper Hangings, Canadian Paper, 1 doz. rolls, assorted	10	5
13.	do Specimen Paper Hangings in decoration, 3 panels	8	4

Sect.		1st.	2nd.
14.	do Paper Bags	\$6	\$3
15.	do Plain and Ornamental Paper Boxes... .. Extras	8	4

CLASS VIII.—Chemical Manufactures and Preparations, Oils, Varnishes, &c

Group I.—Chemical Preparations.

1.	Best Acids used for Manufacturing purposes ...	6	3
2.	do Chemicals and other Preparations used in Pharmacy	10	6
3.	do Pharmaceutical Preparations and fluid extracts	10	5
4.	do Chemicals used in Photography	5	2
5.	do Glue	5	2
6.	do Cut and Ground Dyewoods, assorted, ...	5	2
7.	do Linseed Cake,	6	3
8.	do Plaster of Paris and Land Plaster,	6	3
9.	do Hydraulic Cement,	6	3
10.	do Pot and Pearl Ashes,	5	2
11.	do Medicinal Herbs, Roots and Plants, native growth,	6	3
12.	do Essential Oils,	6	3
13.	do Collection of Perfumery,	8	4
14.	do do Toilet Preparations, and materials used in manufacture of same ...	8	4
	Extras.		

Group II.—Oils, Varnishes, Paints, &c.

1.	Best Neat's Foot Oil and other Animal Oils, an assortment,	6	3
2.	do Linseed and other Vegetable Oils, an assortment,	6	3
3.	do Refined Shale, Rock or Coal Oils,	6	3
4.	do Crude and Refined Fish Oils,	6	3
5.	do Varnishes, Oils and Spirits,	8	4
6.	do Colors and White Lead in Oil and Powder, and Putty, an assortment,	8	4
7.	do Assortment of Dyestuffs,	5	2
8.	do Assortment of Powdered Drugs and Spices,	5	2
9.	do Printing Ink,	6	3

Sect		1st.	2nd.
10.	do Lithographing and Engraving Ink, ...	\$5	\$2
11.	do Writing Ink,	5	2
12.	do Writing and Copying Ink combined, ...	3	2

Group III.—Artificial Limbs, &c.

1.	Best Collection of Splints, Bandages, and other Surgical Appliances,	8	4
2.	do Assortment Artificial Limbs,	8	4
3.	do do Trusses,	5	3
4.	do Models of Inventions, &c.,		
	Extras.		

CLASS IX.—Fine Arts, Pictures in Oil, Water Colors and Crayons, Architectural, Mechanical and other Drawings, Sculpture, Statuary, Engraving, Lithography, Penmanship, Materials used in Art, &c.

Group I.—Oil Paintings.

1.	Best Portrait,	15	10	5
2.	do Historical or other subject,	25	20	10
3.	do Landscape, Canadian subject,	20	15	10
4.	do Animals, from Life,	20	10	5
5.	do Marine subject,	15	10	5
6.	do Flowers or Fruit,	12	8	5
	Extras.			

Group II.—Water Colors.

1.	Best Portrait,	20	10	5
2.	do Landscape (Canadian,)	20	10	5
3.	do Historical or other subject,	20	10	8
4.	do Landscape or Marine subject,	15	10	6
5.	do Animals, from Life,	15	10	5
6.	do Flowers or Fruit,	10	8	5
	Extras.			

Group III.—Crayons, &c.

SECT.		1st.	2nd.
1.	Best Crayon Pencil Portrait,	\$6	\$3
2.	do do Drawing in Colors,	6	3
3.	do do Drawing, Plain,	5	2
4.	do do Freehand Drawing,	5	2
5.	do Pen and Ink Sketch,	5	2
6.	do Charcoal Sketch,	5	2
7.	do Original design, for industrial purposes, ...	8	3

Group IV.—Statuary and Mechanical Drawing.

1.	Best Model in Clay, with Plaster Cast,	20	10
2.	do Statue or Group in Stone,	20	10
3.	do Modelling in Plaster, (Original),	15	8
4.	do Bust in Marble	20	10
5.	do Drawing of Machinery in Perspective ...	8	4
6.	do do an Engine or Mill Work Colored	7	3
7.	do do for Civil Engineering or Surveying work, colored or uncolored	7	3
8.	do Architectural Drawing in perspective view. Colored	6	3
9.	do Architectural Drawing, any subject, colored	6	3
10.	do Designs and plans of a dwelling house for the working class in cities, giving cost in different Materials	8	4
11.	do Collection Anatomical models for School purposes	6	3
12.	do Collection of School Maps	6	3
13.	do do School appliances	8	4
24.	do Design and plans of a dwelling house, for a farmer, giving cost in different materials ...	8	4

Group V. Lithography, Engraving, &c.

1.	Best Specimen of Engraving on Copper or Steel with proof, other than Commercial Work ...	8	4
2.	do Specimen of Engraving on Copper and Steel with proof, Commercial Work	8	4
3.	do Specimen Engraving on Stone with proof ...	6	3
4.	do do Lithographic printing in one color from transfer	6	3

SECT.		1st.	2nd.
5.	Best Specimen Chromo-Lithography other than commercial work	\$6	\$3
6.	do Specimen Engraving on Wood with proof, Scenery,	6	3
7.	do Engraving on Wood, Portrait or other subject	5	2
8.	do Specimen Illuminated Work	6	3
9.	do Specimen Ornamental Penmanship	5	2
10.	do Specimen Commercial Penmanship	5	2
11.	do Collection Monograms, Crests and Ciphers in plain and part in colours	5	2
12.	do Specimen Die-sinking	4	2
13.	do Collection Seal Engraving & Lapidary's work Extras.	5	3

Group VI.—Photography.

1.	Best Photographic Portrait, untouched, not less than 7 x 9	8	4
2.	do Photographic Portrait, water color, not less than 7 x 9	6	3
3.	do Photographic Portrait in India Ink, not less than 7 x 9	6	3
4.	do Carte de Visite and Cabinet Portraits, a collection	15	10
5.	do Collection Photographic Views	10	5
6.	do Photography on Porcelain, colored	8	4
7.	do Collection Stereoscopic Views	5	2
8.	do Combination Photography... ..	8	4
9.	do Assortment Brushes, Trowels, &c.	4	2

CLASS X. — Musical Instruments.

Group I. Pianos and Organs.

1.	Best Grand Piano	20	10
2.	do Square do	15	8
3.	do Upright do	12	6
4.	do Church Organ with pipes	12	6
5.	do do do with reeds	10	5
6.	do Cabinet Organ	8	4
7.	do Melodeon or Harmonium	8	4

Group II. Miscellaneous Instruments.						1st.	2nd.
SECT.							
1.	Best Violin	\$5	\$2
2.	do Bass Drum	4	2
3.	do Kettle Drum	4	2
4.	do Assortment Fifes, Flutes, &c.	5	3
5.	do Set Brass Instruments	10	5
	Extras.						

CLASS XI.—Canadian Economic Geology, Natural History, &c.

Group I. Natural History, &c.

1.	Best Collection of Birds stuffed and labelled, with common and scientific names, and locality where obtained	8	4
2.	do Collection of stuffed Animals with locality where obtained	8	4
3.	do Collection of Native Insects, with common and scientific names attached	6	3
4.	do Any new method or substance for the preservation of objects of Natural History, with Illustrations of its application	6	3
5.	do Collection of Plants or Vegetable Substances of economic importance, such as for the Manufacturing of paper, medicinal or chemical extracts, &c., with statement of locality, abundance, &c.	8	4
6.	do Apparatus for artificial fish breeding	6	3
7.	do Collection of Living Fishes,	8	4
8.	do do Fishes, stuffed or preserved,	6	3

Group II. Mineralogy.

1.	Best Collection of specimens of ore from any mine now worked, accompanied by plans and samples of the manufactured or commercial products	8	4
2.	do Specimens of Minerals or Ores which may be usefully worked with statement of their nature and locality, not hitherto worked	8	4

Secr.		1st.	2nd.
3.	do Specimen of Grate and Stove Coal mined in the Dominion, with Analysis,	\$10	\$5
4.	do Specimen Steam Coal, mined in the Dominion with Analysis,	8	4
5.	do Specimen of Gas Coal or Shale, with certified product of Gas, and Specimen of Coke or other products,	6	3
6.	do Specimen of Prepared Peat,	4	2
7.	do do Canadian Marble,	5	3
8.	do do do Granite,	5	3
9.	do do do Building Stone,	5	3
10.	do Collection Fossils, named and classified,	8	4
11.	do Collection Illustrating the Mineralogy of Canada,	8	4
	Extras.		

CLASS XII.—Groceries, Provisions, Soaps, Tobaccos, Crackers, Starch, &c.

Group I.—Groceries and Provisions.

1.	Best Pearl Barley	3	2
2.	do Pot Barley	3	2
3.	do Assortment Bottled Pickles manufactured for sale	8	4
4.	do Assortment Sauces manufactured for sale	5	3
5.	do Assortment Canned Fruits and Vegetables	6	3
6.	do Assortment Preserved Jams and Jellies	5	2
7.	do Assortment Canned Meats	10	5
8.	do Assortment Canned Fish	8	4
9.	do Assortment Ground Spices	5	2
10.	do Buckwheat Flour	4	2
11.	do Wheat Flour	4	2
12.	do Oatmeal	4	2
13.	do Corn Meal	4	2
14.	do Assortment Blacking	4	2
15.	do Vinegar, manufactured in Canada	5	3
16.	do Ground Coffee	4	2
17.	do Canadian Coarse Salt	3	2
18.	do Canadian Fine Salt	3	2
19.	do Canadian Dairy or Table Salt	5	3

SECT.		1st.	2nd.
20.	do Refined Sugar	\$5	\$3
21.	do Refined Yellow Sugar	5	3
22.	do Beet Root Sugar	8	4
23.	do Maple Sugar	4	2
24.	do Maple Syrup	3	2
25.	do Golden Syrup	3	2

Group II.—Vermicelli, Starch, &c.

1.	Best Specimen Vermicelli	3	2
2.	do Specimen Macaroni	3	2
3.	do Specimen Corn Starch	3	2
4.	do Specimen Potato Starch	3	2
5.	do Specimen Flour Starch	3	2

Group III.—Crackers, Confectionery, &c.

1.	Best Assortment Fancy Crackers	5	3
2.	do Assortment Plain Crackers	5	3
3.	do Assortment Sea Biscuits or Pilot Bread	5	3
4.	do Assortment Confectionery, plain	6	4
5.	do Assortment Confectionery, fancy	6	4

Group IV.—Alcoholic and Malt Liquors, Syrups, &c.

1.	Best Assortment Distilled Liquors	5	2
2.	do Assortment Ale and Porter	5	2
3.	do Assortment Ginger Ale and Soda Water	5	2
4.	do Assortment Mineral Waters	5	2
5.	do Assortment Cider	5	2
6.	do Assortment Native Wines	5	2
7.	do Assortment Fruit Syrups	5	2

Group V.—Tobacco, Cigars, &c.

1.	Best Bright Plug Tobacco	4	2
2.	do Cut Smoking Tobacco	4	2
3.	do Black Plug Tobacco	4	2
4.	do Fine Cut Chewing Tobacco	4	2
5.	do Canadian Tobacco	4	2

SECT.		1st.	and.
6.	do Leaf Tobacco	\$4	\$2
7.	do Snuff Tobacco	4	2
8.	do Assortment Foreign Cigars	8	4
9.	do Assortment Domestic Cigars	4	2
10.	do Cigarettes	4	2
11.	do Assortment Clay Pipes	4	2
12.	do Assortment Wood Pipes	4	2
13.	do Assortment Meerschaum Pipes	4	2
14.	do Assortment Smoker's Materials	4	2
15.	do Tobacco Cutter	4	2
16.	do Assortment Friction Matches	5	2
17.	do Assortment Fancy Matches	5	2
	Extras.		

Group VI.—Soaps, Candles, &c.

1.	Best Assortment Hard Soap	5	3
2.	do Assortment Fancy and Toilet Soap ...	10	5
3.	do Assortment Oil Soap for fulling and scouring	4	2
4.	do Assortment Tallow Candles	4	2
5.	do Assortment Composition Candles ...	5	3
	Extras.		

**CLASS XIII.—Woollen, Flax and Cotton Goods, Furs,
Wearing Apparel, &c.**

Group I.—Woollen Goods.

1.	Best Assortment Canadian Tweeds, Fancy, ...	10	5
2.	do do do do Plain, ...	8	4
3.	do do Satinet, do	6	3
4.	do do Etoffe du Pays,	5	2
5.	do do Flannel, White,	4	2
6.	do do do Colored,	8	4
7.	do Pair Blankets for Domestic Use, Fancy, ...	8	4
8.	do do do do Plain, ...	6	2
9.	do do for Lumbermen's Use, ...	5	2
10.	do Assortment Horse Blankets,	5	2
11.	do do Cashmeres,	5	2
12.	do three pieces Broadcloth,	5	2
13.	do do Doeskin,	5	2

SECT.			1st.	2nd.
14.	do	Assortment Knitted Woollen Goods, ...	\$5	\$2
15.	do	do Shirts and Drawers, ...	5	2
16.	do	do Socks and Stockings, ...	5	2
17.	do	do Woollen Yarn, Canadian, ...	3	2
18.	do	do do Foreign, ...	3	2

Group II.—Carpets and Oil Cloths.

1.	Best Home made Carpets, ...	5	2
2.	do Fancy Carpets, ...	6	3
3.	do Assortment Stair Carpets, ...	6	3
4.	do do Parlor and Carriage Rugs, ...	5	2
5.	do do Door Mats, ...	4	2
6.	do Specimen Rubber and Composition Carpet,	6	3
7.	do do Floor Matting, ...	4	2
8.	do Assortment Oil Cloths, ...	8	5

Group III.—Cottons, &c.

1.	Best Cotton or Linen Bags	4	2
2.	do Piece Cotton	4	2
3.	do do do Batting	4	2
4.	do do do Yarn	4	2
5.	do do do Wadding	4	2
6.	do Assortment Grain Bags	4	2
7.	do do Counterpanes	3	2

Group IV.—Wearing Apparel, &c.

1.	Best Assortment Collars and Cuffs	10	5
2.	do do Gloves and Mitts, leather	6	3
3.	do do do do do, kid	5	2
4.	do Overcoat of Canadian Cloth	5	3
5.	do Gentlemen's Suit do do	6	3
6.	do Boy's do do do	5	2
7.	do Assortment Gents Shirts	6	3
8.	do do Ties, Scarfs, &c.	4	2

PRIZE LIST.

41

Group V.—Furs, Hats, Caps, &c.

SECT.		1st.	2nd.
1.	Best Set Ladies' Furs, in Seal skin	\$10	\$5
2.	do do do do in Persian Lamb	8	4
3.	do Set Ladies' Furs of any other kind	10	5
4.	do Ladies' Coat or Cloak, Fur lined or trimmed	10	5
5.	do Assortment Gents' Caps and Gauntlets ...	10	5
6.	do Gentleman's Seal Coat	10	5
7.	do do Lambskin Coat	10	5
8.	do Assortment Sleigh robes, not less than 3 kinds	10	5
9.	do do Fancy Robes and Matts	5	2
10.	do Collection of Manufactured Furs	15	8
11.	do Assortment Silk Hats	6	3
12.	do do Felt do	6	3
13.	do do Buckskin Gloves	6	3
	Extras.		

CLASS XIV.

Ladies Department.

SECT.		1st.	2nd.	3rd.
1.	Bead Work (other than Indian)	\$3	\$2	\$1
2.	Braiding	3	2	1
3.	Crochet Work (other than Quilts)	3	2	1
4.	Quilt in Crochet Work	3	2	1
5.	do Silk	3	2	1
6.	do Patchwork (other than Silk)	3	2	1
7.	do Fancy Knitting	3	2	1
8.	Embroidery in Muslin	3	2	1
9.	do Cotton	3	2	1
10.	do Silk	3	2	1
11.	do Worsted	3	2	1
12.	do Wool	3	2	1
13.	do Gold	3	2	1
14.	Worsted Work, Raised	3	2	1
15.	do Fancy for Framing	3	2	1
16.	Guipure Work	3	2	1
17.	Netting Fancy	3	2	1
18.	Lace Work	3	2	1
19.	Tatting	3	2	1
20.	Knitting	3	2	1
21.	Machine Sewing, Family	3	2	1
22.	Needlework Plain	3	2	1

Sect.	1st.	2nd.	3rd.
23. Needlework, Ornamental	\$5	\$3	\$1
24. Indian Bead Work	3	2	1
25. Pair of Slippers	3	2	0
26. Straw and Hay Work	2	1	0
27. Cone Work	2	1	0
28. Flowers, Wax	5	3	2
29. Flowers, Worsted	3	2	0
30. do Feathers	3	2	0
31. do Paper	2	1	0
32. do Cambric	2	1	0
33. do Silver Wire	3	2	0
34. Hair Work	4	2	0
35. Leather Work	3	2	0
36. Moss Work	3	2	0
37. Shell Work	3	2	0
38. Wax Fruits	5	3	0
39. Wax Shell	5	3	0
40. Seed Work	3	2	0
41. Illuminated Work	3	2	0
32. Decalcomanie	3	2	0
43. Diaphanie	3	2	0
44. Wreath, Artificial	3	2	0
45. Collection of Seaweed Extras.	3	2	0

CLASS XV.

Domestic Manufactures.

1. Best 2 pairs of woollen Stockings	2	1	0
2. do do do Socks	2	1	0
3. do do do Gloves	2	1	0
4. do do do Mittens	2	1	0
5. do 2 lbs. of Stocking Yarn	2	1	0
6. do Piece of Cloth, 12 yards	4	3	2
7. do Piece Etoffe du Pays	4	3	2
8. do Piece Woollen Flannel	4	3	2
9. do Woollen Shawls	3	2	1
10. do Piece Check for Cloaking, 6 yards ...	3	2	1
11. do Pair of Blankets	5	3	2

PRIZE LIST.

43

SECT.					1st.	2nd.	3rd.
12.	do	Counterpane	\$4	\$3	\$2
13.	do	Yarn Carpet, 12 yards	4	3	2
14.	do	Hearth Rug	2	1	0
15.	do	Piece Diaper, 12 yards	4	3	2
16.	do	Piece Linen, 12 yards	4	3	2
17.	do	Linen Thread, ½ lb	2	0	0
18.	do	Home Made Bread	3	2	0
19.	do	do do Biscuit	3	2	0
20.	do	do do Wine	2	1	0
21.	do	do do Vinegar	2	1	0
22.	do	do do Syrup	2	1	0
23.	do	do do Liquors	2	1	0

S. C. STEVENSON,

Secy C. of A. and M.

181 St. James Street,
Montreal.

