

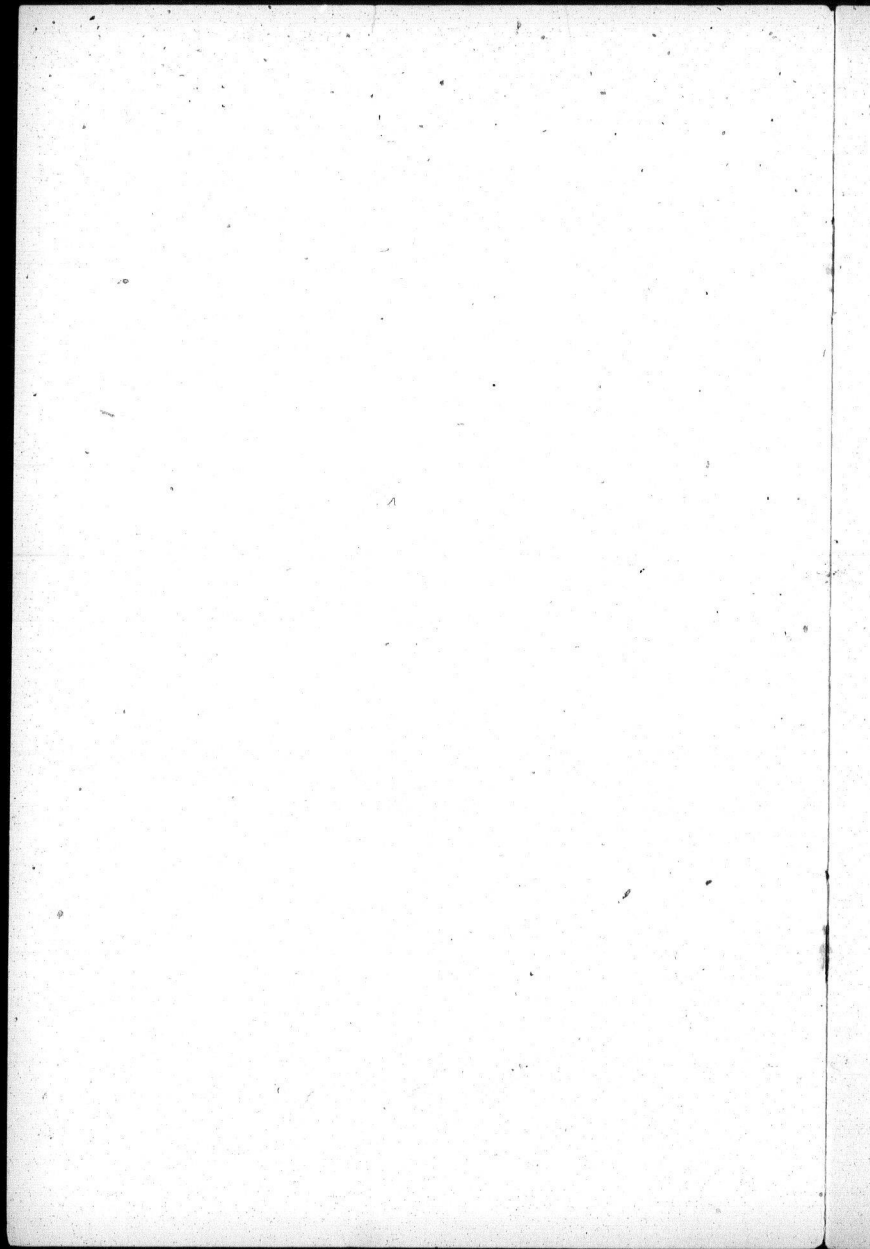
FIRST ANNUAL REPORT  
OF  
ST. ENOCH'S  
PRESBYTERIAN CHURCH,

TORONTO, - ONTARIO.



FOR THE YEAR 1890.

TORONTO.  
PRINTED BY R. G. MCLEAN, 32 & 34 LOMBARD ST.  
1891.



FIRST ANNUAL REPORT  
OF  
ST. ENOCH'S  
PRESBYTERIAN CHURCH,

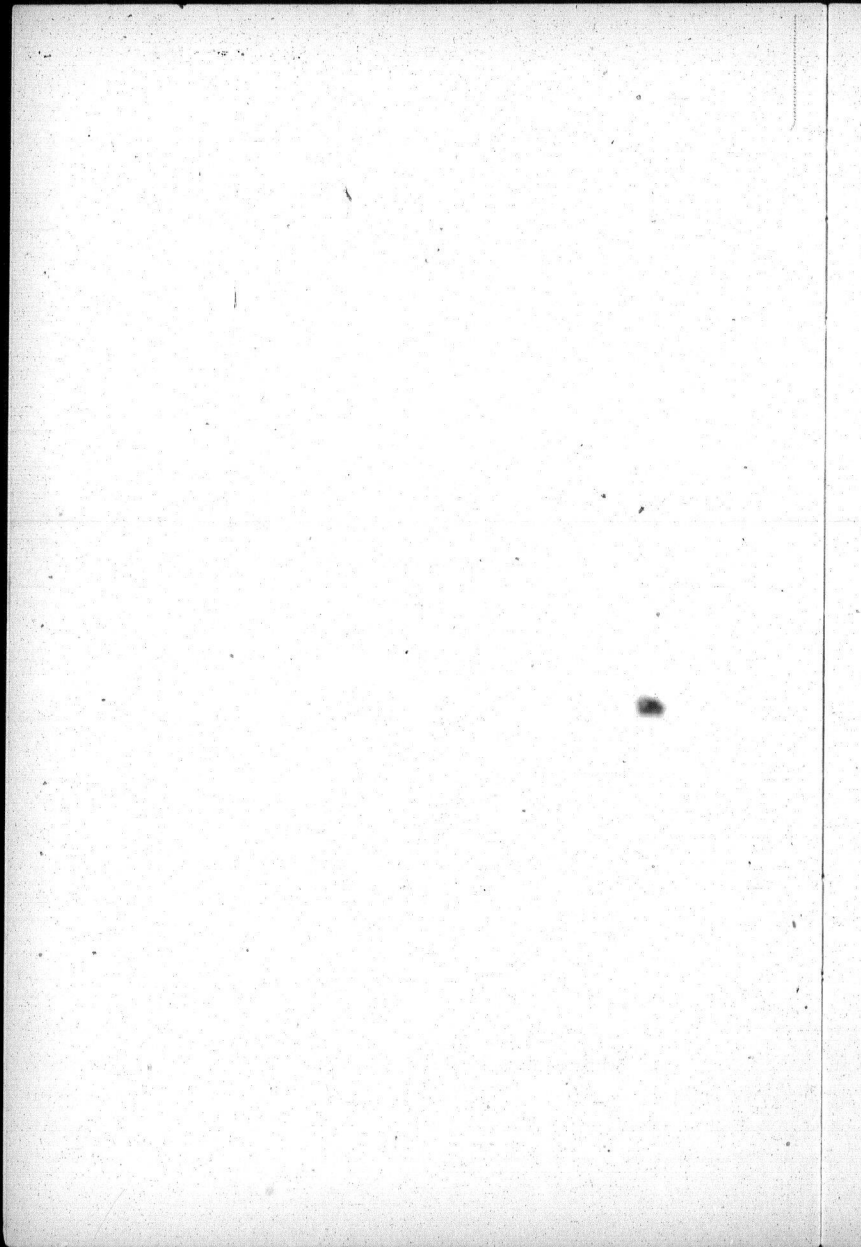
TORONTO, - ONTARIO.



FOR THE YEAR 1890.

---

TORONTO.  
PRINTED BY R. G. McLEAN, 32 & 34 LOMBARD ST.,  
1891.



**SESSION.**

REV. G. C. PATTERSON, M.A., *Moderator*, - 14 Homewood Ave.  
 A. MACMURCHY, M.A., - - - - - 254 Sherbourne St.  
 JOHN CARLYLE, - - - - - 101 Ontario St.

**TRUSTEES.**

KENNETH MURDOCH, <i>Chairman</i> .	WILLIAM PETRIE.
JOHN A. MILLS, <i>Treasurer</i> .	JAMES MCGLASHAN.
L. J. MCINTYRE, <i>Secretary</i> .	

**MANAGERS.**

A. C. MCLEAN, <i>Chairman</i> .	WILLIAM FISCHER.
WILLIAM PETRIE, <i>Treasurer</i> .	PHILIP MCGREGOR.
BROCK STEVENS, <i>Secretary</i> .	

**BUILDING COMMITTEE.**

A. MACMURCHY, M.A., <i>Chairman</i>	L. J. MCINTYRE, <i>Secretary</i>
A. C. MCLEAN.	JAMES MCGLASHAN.
JOHN A. MILLS.	BROCK STEVENS.
KENNETH MURDOCH.	WM. PETRIE.

**DISTRICT VISITORS.**

MISS MAGGIE BETHUNE, - - - - -	District No. 1
MISS LIZZIE BETHUNE, - - - - -	" No. 2
MISS BELLE V. MCINNES, - - - - -	" No. 3
MRS. J. W. HOGG, - - - - -	" No. 4
MISS LIZZIE GIBSON, - - - - -	" No. 5
MRS. JESSIE TURBAYNE, - - - - -	" No. 6
MISS MILNE, - - - - -	" No. 7
MISS GORRIE, - - - - -	" No. 8
MRS. MCCUAIG, - - - - -	" No. 9
MRS. GURNETT, - - - - -	" No. 10
MRS. WOODROW, - - - - -	" No. 11
MISS MAGGIE D. FISCHER, - - - - -	" No. 12

**ORGANIST.**

MISS MAGGIE D. FISCHER, - - - - - 640 Ontario St.

**CHURCH OFFICER.**

A. MCFADYEN, - - - - - 373 Sumach St.

## GENERAL NOTICES.

Public Worship on Sabbath at 11 a. m. and 7 p. m.

Sabbath School and Bible Classes at 3 p. m.

The Weekly Prayer Meeting is held every Wednesday evening at 8 o'clock.

The Sacrament of Baptism is administered at the morning service on the first Sabbath of each month. Parents are desired to give previous intimation.

The Sacrament of the Lord's Supper is observed on the third Sunday of February, May, September and December.

The Auxiliary of the Women's Foreign Missionary Society meets on the second Wednesday of each month.

The Y. P. C. Association meets fortnightly on Tuesday at 8 p. m. during the winter months.

The regular meetings of the Board of Managers are held on the first Saturday of each month at 8 p. m.

The Open Communion Collections and  $\frac{1}{3}$  part of the ordinary revenue of the Church are for Communion Expenses, support of the Sunday School and Charity.

District visitors call upon Members and Adherents for contributions to Church Schemes, monthly or quarterly, as suits the convenience of contributors.

The Annual Meeting of the Congregation for general business is held on the second Wednesday in January.

Cases of sickness should be reported to the Minister with as little delay as possible.

## SCHEMES OF THE CHURCH.

The following are the Schemes for which the General Assembly appoints collections to be made annually in all the Congregations and Mission Stations of the Church:—

I. HOME MISSIONS.—The Presbyterian Church in Canada has a vast Home Mission field, extending from Newfoundland to Vancouver Island. The number of mission fields in the 32 Western Presbyteries is 276, and of preaching stations 820; in the Eastern Section 45 mission stations and 170 preaching places, making in all 321 distinct fields and 990 places where stated services were conducted for longer or shorter periods during the past year. The number of missionaries employed, in both sections, was 329, of whom 121 were ordained ministers and licentiates, and 208 were students and catechists. The average Sabbath attendance at these stations was 43,065, the number of families connected with them, 11,701, and of communicants, 13,997. The total expenditure was \$66,475; the amount contributed by the people in the mission stations was

\$65,739. The amounts asked from the congregations of the Church for the current year are, for the West, \$55,000; for the East, \$12,000; in all \$67,000—none too much to meet the pressing claims on the Committees, owing to the rapid extension of the work in the North-West and in British Columbia, where many settlements are as yet unprovided with religious services.

II. AUGMENTATION OF STIPENDS.—This fund was instituted by the General Assembly with a view of supplementing the stipends of ministers in the small and weak congregations so as to secure them an income of at least \$750 per annum with a manse. It claims the sympathy and generous support of the congregation on the well understood principle that the Church is one; and that the strong ought to help the weak. Many of the now large and wealthy congregations have had a stage in their own history when they required and obtained aid to support ordinances, and they cannot now reasonably refuse aid to those who need assistance. During the past seven years the fund has done a great deal of good. For one thing, it has encouraged struggling congregations to put forth stronger efforts in their own behalf. Since 1883, no fewer than 216 aid-receiving congregations have become self-supporting. The process of transferring mission stations to the list of augmented congregations, and these to become independent of aid, is constantly going on and adding to the numerical and material strength of the Church. The amounts required for this purpose for the current year are, for the West, \$30,000, and for the East, \$9,000.

III. FRENCH EVANGELIZATION.—The statements contained in the last annual report of the Board of the General Assembly are encouraging. The work is being diligently prosecuted in its various departments, and not without visible tokens of success. "Already," the report says, "there are wide-spread and marked symptoms among Roman Catholics themselves of the bitter discontent with which they endure the heavy exactions of their Church; and there is a loud call to the lovers of truth and freedom to increase an hundred-fold their prayers, their liberality, and their activity to hasten the national emancipation of the whole French-speaking people." The Board continues its three-fold agency of colportage, schools, and preaching the Gospel. There are 26 organized Churches and 92 preaching stations; 36 schools, with 1020 scholars; 1187 young people are taught in the Sabbath schools and Bible classes; the number of communicants is 1337. The estimates for the current year call for \$70,000.

IV. THE COLLEGES.—While each of the six Theological Colleges is looking to a permanent endowment fund as best suited for their support and usefulness, none of them has yet reached the point when they would be independent of assistance from the congregations to meet their necessary annual expenditure. The whole amount

asked this year is \$35,200, as follows:—For Knox, Queen's and Montreal Colleges, \$15,200; for Manitoba College, \$10,000, and for Halifax and Morrin College, Quebec, \$10,000. The congregations are at liberty to appropriate their benefactions to the several Colleges as they deem best.

V. MINISTERS, WIDOWS AND ORPHANS' FUND.—This most deserving fund has a strong claim on the practical sympathies of the whole Church. An appeal to relieve the widow and the fatherless strikes a chord that naturally and forcibly commends itself instinctively to every reflecting mind. Christianity demands it; and yet the contributions of many congregations to this fund are utterly inadequate to attain the end in view. There are upwards of 130 annuitants whose comfort is in a large measure dependent on the annual contributions of the congregations. The annuities are very small, ranging only from \$100 to \$200 per annum. To meet these claims requires, at the least, \$8,500 from congregational sources this year.

VI. THE ASSEMBLY FUND.—This is one of the funds in support of which it may be difficult to make an eloquent or pathetic appeal, it is, however, of vital importance that it be adequately supported. The annual amount required to defray the expenses connected with the meeting of the General Assembly, the printing and issuing of the minutes, the salaries of the clerks, and other unavoidable outlays, is about \$5,000—constituting a very small tax on the liberality of 1000 congregations.

VII. MANITOBA COLLEGE.—The exceptional circumstances of this College, and the important work it is doing for the Church in the North-west and British Columbia, have caused the General Assembly to authorize a special contribution from the whole Church in its behalf. While the College authorities have succeeded in extinguishing the debt on the buildings, the increasing attendance of students, and the urgent demand for still more, to overtake the rapidly extending work, has made it necessary to incur additional expense in the way of supplementing the teaching staff. The great benefit of Manitoba College to the western part of the Church, and to the Dominion, has never been more apparent than now. The amount asked this year is \$10,000.

VIII. AGED AND INFIRM MINISTERS' FUND.—The sum of \$18,000 is required to enable the Committee to continue the utterly inadequate payments—not exceeding in any case \$200 per annum—to the ministers of our Church who through old age or infirmity have been compelled to retire from the active duties of their calling. The number of beneficiaries at present on the roll is 86. A special effort is being made to secure a permanent endowment fund of at least \$200,000, so as to relieve the pressure on the annual congregational fund, and if possible to increase the annuities to at least \$300 or



\$400. A considerable amount has already been contributed for this purpose, and the Committee have been greatly encouraged by the promise of a gift of \$20,000 from Sir Donald A. Smith, provided that the contemplated \$200,000 shall have been secured within a stated time. A few generous contributions from the wealthier members of the Church would be most acceptable at the present stage of the canvas.

IX. FOREIGN MISSIONS.—Although the last to be mentioned, not the least in importance, is the appeal made to the constituency of the Presbyterian Church in Canada for \$118,000 to enable the Foreign Mission Committee to carry on and extend the beneficent work of sending forth missionaries to preach the Gospel of the grace of God in benighted heathen lands. Year by year affords more convincing testimony that the harvest is plenteous and the laborers few. Year after year the call from missionaries already in the field waxes louder and louder, "Come over and help us." The time seems opportune, as never before, for a combined advance by the forces of Christianity upon the strongholds of error and superstition and infidelity. The gratifying success which has attended the missions of our own Church in the New Hebrides, Trinidad, China, Central India, and among the aborigines in our own country may well encourage us to abound in this grace also, and to esteem it a privilege no less than a duty to be found fellow-workers with God in His grand design for the evangelization of the world.

[The above statement was prepared by Mr. J. Croil, of *The Presbyterian Record*, and with his permission is inserted here.]

### **ABSTRACT OF MINUTES OF THE ANNUAL MEETING OF THE CONGREGATION.**

TORONTO, January 14, 1891.

The First Annual Meeting of the Congregation was held on Wednesday evening, 14th January, 1891. Rev. G. C. Patterson in the chair.

Meeting was opened with devotional exercises.

Kenneth Murdoch was appointed Secretary of the meeting.

The Reports of Session, Board of Managers, The Auxiliary of the Women's Foreign Missionary Society, Young Peoples' Christian Association, Sabbath School, The Ladies' Aid, Building Committee, were presented, received and adopted.

Nominations were then received for the three vacancies in the Board of Management and a vote having been taken the following gentlemen were duly elected, viz.: Messrs. B. Stevens, William Petrie and Philip McGregor.

Messrs. L. J. McIntyre and James McGlashan were appointed Auditors for the ensuing year.

It was agreed that the Annual Reports of the congregation be printed, and that a committee consisting of Rev. G. C. Patterson, Arch. MacMurchy, K. Murdoch and John A. Mills be appointed to attend to this matter.

The thanks of the congregation were tendered to the choir for their valuable services.

Moved by A. C. McLean seconded by James McGlashan,

That the congregation ask the Presbytery of Toronto to request the Trustees now holding the property at the corner of Winchester and Sackville streets, to transfer the same in the terms of the conditions set forth in the trust deed, to the Board of Trustees elected by the congregation.

Also to give it permission to sell the above-mentioned property and apply the proceeds in erecting a suitable place of worship on the site recently acquired by the congregation for that purpose on the north-east corner of Winchester and Metcalfe Streets.

Also to grant permission to mortgage the new lot and building erected thereon for a sum not to exceed Ten Thousand Dollars for the purposes of such building.

And that the Session be asked to transmit this resolution to the Presbytery at its next regular meeting. Carried.

The meeting was then closed with devotional exercises.

---

### **REPORT OF SESSION OF ST. ENOCH'S CHURCH FOR THE YEAR ENDING DECEMBER 31st, 1890.**

It is with devout thankfulness to Almighty God that the Session reports progress in all departments of the congregation's work.

The Sabbath attendance has grown steadily, and we observe with gratitude that the interest taken in all the work of the Church is deepening, the spiritual life of the congregation rising and the bond of union strengthening.

The attendance at the Wednesday evening Prayer Meeting, though not what it might be, is yet full of encouragement and of promise. We would most earnestly remind the individual members of the congregation of their duty and privilege in regard to this means of grace so as to draw down upon the congregation the promised blessing.

The Session would commend to your thoughtful kindness "the stranger that is within thy gates," and would ask that each member should charge himself with the duty of extending a hearty Christian welcome to all new members.

One hundred and twenty-five persons have been received into full communion. Seventeen on profession of faith, and one hundred

and four by certificate. Seven have been transferred by certificate to other churches, and three have been removed by death, thus leaving on the roll at the close of the year one hundred and fifteen names.

We deeply sympathize with those who have been bereaved and pray that their hearts may be comforted with the consolations of the blessed hope which the Gospel brings. Each time the shadow of the "Death Angel" flits across our pathway the warning is given, "Watch therefore for you know not what hour your Lord doth come."

In November a Y. P. C. Association was organized. Its meetings are growing in interest and value, and through this agency much excellent work may be done "unto the furtherance of the Gospel."

In February an Auxiliary of the W. F. M. S. was formed. Although the meetings are not very largely attended much interest is manifested and we believe good work is being done in developing the missionary spirit among its members and in the congregation. May they go on "from strength to strength."

The thanks of the congregation are due to the Teachers and Office-bearers in the Sunday School for the faithful discharge of the duties pertaining to this branch of the Church's work. We bespeak for this band of workers the hearty co-operation and earnest prayers of the Church. The school felt keenly the loss sustained by the necessary withdrawal through continued ill health of Mr. J. H. Thom, our late Superintendent, who from the inception of the work here was a most enthusiastic, devoted and successful worker. We are also conscious of the loss of several teachers, members of the parent Church, who have withdrawn believing that the work should now be done by members of the congregation. We desire to thank them for their service in the School, and to express our gratitude to God for his sustaining and unifying grace, whereby the School has continued to grow in strength and usefulness.

The District Visitors merit our thanks for their self-denying efforts especially in behalf of those who have been in sorrow, in sickness and in need. We believe that light and comfort and hope have been brought to some through this instrumentality. "Inasmuch as ye have done it unto one of the least of these my brethren, ye have done it unto Me."

We would not fail to remember the good services of the Choir and the cheerful spirit in which these services have been rendered.

Nor would we forget the deep and enlightened interest taken in our congregation and in all that concerns its well-being by Old St. Andrews, the liberal support given throughout the year for the sustaining of ordinances, and the large contributions received from certain of its membership to assist in the erection of a more commodious place of worship.

"The Lord hath done great things for us, whereof we are glad."

We would remind the Church of the corresponding responsibility of each member for the success of the work to which the Master has called us, and of the supreme necessity for individual consecration to Him that we may be endued with power from on high for service and go forward in His name from victory to victory.

---

### Members Deceased in 1890.

---

Them which sleep in Jesus will God bring with Him.  
Comfort one another with these words.

2 Thess. iv., 14, 18.

---

THOMAS MITCHELL.  
ANDREW POTTER.  
GEORGE CRAMMOND.

---

### REVENUE.

"Upon the first day of the week let every one of you lay by him in store as God hath prospered him."—1 Cor. xvi. 2.

"God is able to make all grace abound toward you, that ye always having all sufficiency in all things, may abound to every good work."—2 Cor. ix. 8.

---

Contributions for the Support of Ordinances are made in three ways :—(1) Weekly offerings in envelopes placed on the collection plate each Sabbath ; (2) Quarterly subscriptions ; (3) Contributions placed on the collection plate. The first method has been adopted by the greater part of the congregation, and the Managers greatly prefer that it should be adopted by all. The sittings are all free.

Envelopes are given at the beginning of each quarter, and any one not now receiving envelopes, and desiring to contribute in this way, is requested to give his or her name to any of the Managers, who will attend to the matter. All those who occupy sittings are expected to contribute according to their means to the current expenses of the congregation.

## ANNUAL REPORT OF BOARD OF MANAGERS.

The Board of Managers have pleasure in submitting their First Annual Report showing receipts for the year ending December 31st, 1890, to be \$1071.46, and disbursements \$898.37, leaving a balance on hand of \$173.09.

The results attending the envelope system have been most gratifying, and notwithstanding this being our first year of existence as a congregation, your Managers are able to report a steady increase of revenue throughout the year, and in order that the Managers may be able to meet all expenses for the ensuing year they would earnestly recommend every member and adherent to adopt the envelope system, thereby securing regular and certain contributions for the carrying on of the work of the Congregation.

J. W. HOGG,  
*Secretary.*

R. MANSER.  
*Chairman.*

## STATEMENT OF RECEIPTS AND EXPENDITURES.

### RECEIPTS.

By Weekly Collections	\$445 18
" Weekly Envelopes	533 35
" Collections Missionary Schemes of Church	92 93
	<u>\$1071 46</u>

### EXPENDITURE.

The Expenditure was	898 37
Balance on hand	<u>\$ 173 09</u>

We hereby certify that we have examined the Treasurer's books of which the foregoing is an abstract, and have found the same to be correct.

L. J. MCINTYRE, }  
JAMES MCGLASHAN, } *Auditors.*

Toronto, January 31st, 1891.

## REPORT OF ST. ENOCH'S CHURCH SABBATH SCHOOL.

SUPERINTENDENT,	Rev. G. C. Patterson, M. A.
ASST. " "	Richard Manser.
SEC.-TREAS.,	John Gurnett.

### LIBRARIANS :

Robert Aitkens.	A. A. Adams.
ORGANIST,	Miss Etta M. West.

### TEACHERS :

Mrs. Carroll.	Miss Maggie Black.	Miss McGlashan.
Mrs. Gurnett.	" Jeanie Gordon.	" Milne.
Mrs. McFadyen.	" Martin.	" McColl.
Mrs. Nelson.	" Young.	Mr. A. C. McLean.
Mrs. Saulter.	" Haas.	" B. Stevens.
Miss Sarah A. Adams.	" Rosetta M. West.	Dr. Shiell.
" Lizzie Bethune.	" Gertrude Milligan.	Mr. Jas. A. T. Bell.
" Belle V. McInnes.	" Johnston.	
" Maggie D. Fischer.	" Hunter.	

We have to record steady progress during the year. There are now 26 Classes in the School, 1 Bible Class, 11 Classes for boys and 14 for girls.

The Library has been re-organized and a new system of distributing the books instituted. Under the management of Messrs. Aitken and Adams, this department of the work will, we trust, give greater satisfaction this year than ever.

The offerings of the School have amounted to \$137.03, and of this \$77.03 have been paid for S. S. supplies and sundry small accounts, and on the recommendation of the Teachers the Scholars agreed to allocate the remaining \$60 as follows :

French Evangelization, (Point aux Trembles School),	\$20 00
Home Missions, (North-West),	20 00
Hospital for Sick Children, Toronto,	20 00

The date for the Annual Summer Outing of the School was July 19th, when nearly all the Scholars, with Parents, Teachers and other friends, enjoyed a sail to Victoria Park and spent a delightful day there.

Miss West, our organist, merits our most hearty thanks.

The School's outlook for 1891 is full of promise, but the need of increased accommodation is urgent.

## REPORT of ST. ENOCH'S AUXILIARY of the WOMEN'S FOREIGN MISSIONARY SOCIETY 1890.

---

PRESIDENT, - - - - -	Mrs. Hood.
1st VICE-PRESIDENT, - - - - -	Mrs. Gibson.
2nd VICE-PRESIDENT, - - - - -	Mrs. Turbayne.
SECRETARY, - - - - -	Miss M. Bethune.
TREASURER, - - - - -	Miss Fischer.

In presenting the First Annual Report of this Society, the office-bearers and members have cause for thankfulness for the measure of success that has attended their efforts during the past year. Our membership numbers twenty-eight. Meetings have been held monthly in which many of the ladies have taken part.

Each member receives a copy of the *Letter Leaflet*, thereby awakening an interest in the work done in the various mission fields.

In entering upon another year of work, we pray that still greater interest may be taken, and that more may join us in this work, which we undertake in obedience to the Master's command:—"Go ye into all the world and preach the Gospel to every creature."

MAGGIE BETHUNE,

*Secretary.*

---

### TREASURER'S ANNUAL STATEMENT of ST. ENOCH'S AUXILIARY.

---

Received from Members' Fees, - - - - -	\$10 25
" " Envelopes, - - - - -	13 30
" " Mite Boxes, - - - - -	5 89
Donation from a friend, - - - - -	5 00
Received from Thank Offering in October, - - - - -	8 85
" " Proceeds from Boy's Missionary Garden, - - - - -	57
	<hr/>
	\$43 86
	<hr/>
Balance on hand, January 14, 1891, - - - - -	\$43 86

---

MAGGIE D. FISCHER,

*Treasurer St. Enoch's Auxiliary.*



### REPORT LADIES' AID SOCIETY.

PRESIDENT,	Mrs. Woodrow.
VICE-PRESIDENT,	Mrs. Chas. Hood.
TREASURER,	Mrs. E. W. Gibson.
SECRETARY,	Miss Belle V. McInnes.

This Society was organized on 24th April, 1890, for the purpose of assisting the Board of Managers in some measure in the temporal affairs of the Church. Present membership is 22.

A meeting for work is held every Thursday from 2 to 5 p.m.

#### TREASURER'S STATEMENT.

##### RECEIPTS.

To proceeds of two Socials and two Sales of Work, - \$132 45

##### EXPENDITURE.

By amount paid to Managers for Church Furnishings \$36 25

" Balance on hand, - - - - - 96 20

—————\$132 45

E. W. GIBSON, *Treasurer.*

### REPORT OF THE YOUNG PEOPLE'S CHRISTIAN ASSOCIATION.

A meeting of the young people of the congregation was held in the Church on the evening of Monday, November 4, to consider the advisability of forming a Young People's Society.

It was decided to form one to be called The Young People's Christian Association of St. Enoch's Church and a committee was appointed to draft a constitution. At a subsequent meeting the committee submitted a constitution which was adopted and the Association fully organized.

The objects of this Association are the spiritual and intellectual improvement of its members, together with the carrying on of such active Christian work as shall from time to time be determined upon.

The meetings are held every alternate Tuesday evening and have been full of interest and profit.

The Association has already a membership of fifty-five with good prospects of a rapid increase.

The officers of the Association are :

HONORARY PRESIDENT,	Rev. G. C. Patterson, M. A.
PRESIDENT,	L. J. McIntyre.
1ST VICE-PRESIDENT,	J. Gibson.
2ND " "	Thos. Dallas.
RECORDING SECRETARY,	J. W. Manser.
CORRESPONDING " "	Miss Belle V. McInnes.
TREASURER,	Mrs. Carroll.
PIANIST,	Miss Milne.
ORGANIST,	Miss Fischer.
ASST. " "	Miss M. Bethune.
MUSICAL DIRECTOR,	Miss Boyd.
EDITOR,	Mrs. McIntyre.



### TRUSTEES' REPORT.

The Trustees desire to take this opportunity of giving expression to their appreciation of the great kindness and generosity of the congregation of Old St. Andrew's in giving to this church the property at present occupied by us, thereby greatly augmenting the large amount subscribed by individual members of the parent church.

Acting under instructions from the congregation of this church, we have to report that the property on the north-east corner of Winchester and Metcalfe Streets has been acquired and the consent of the Presbytery obtained to sell the present site and apply the proceeds to the erection of a suitable place of worship on the new lot.

### REPORT OF BUILDING COMMITTEE.

As, an outcome of the movement in favor of erecting a new church, a congregational meeting was held on November 25th, 1890, for the purpose of fully considering the whole matter.

At that meeting it was shown that a sufficient sum had been subscribed to warrant the congregation in going on with the undertaking, whereupon a committee was appointed consisting of Messrs. MacMurchy, Manser, Murdoch, McLean, Mills, McIntyre, McGlashan, Stevens and Petrie, with instructions to proceed with the erection of a new building on the corner of Metcalfe and Winchester Streets, on plans and specifications submitted by Messrs. Gordon & Helliwell, and having a seating capacity of 750. The matter of a school room was left over for further consideration. On November 29th following, the Trustees purchased 73 x 100 feet on the above-mentioned corner for the sum of \$7,300 00, on terms and conditions approved by your committee. On the same date tenders for the various departments of work in connection with the new building, aggregating \$10,828 00, were accepted, and the architects instructed to begin operations immediately. Work was begun on December 1st, and considerable progress has been made.

The sum of \$1,140.00 has been paid on the lot, and the balance arranged by the Trustees assuming a mortgage of \$3,800.00 and giving their personal bond for the remainder. The architects first certificate for construction account, amounting to \$550.00, was promptly met without any difficulty whatever. Owing to the uncertainty of the weather at this season of the year, no specified time has been fixed for the fulfillment of the contracts, but your committee have much pleasure in stating that the building is progressing as rapidly as circumstances will allow, and that there is every reason for believing that the congregation will be able to take possession of the completed structure in the early spring.

All of which is respectfully submitted.

L. J. MCINTYRE,  
*Secretary.*

A. MACMURCHY,  
*Chairman of Committee.*

January, 1891.

## GENERAL STATEMENT.

### RECEIPTS.

Weekly Offerings.....	\$445 18	
Weekly Envelopes.....	533 35	
Collections Missionary Schemes of Church.....	92 93	
	<hr/>	\$1071 46
Sabbath School.....		137 03
Ladies' Aid Society.....		132 45
St. Enoch's Auxiliary Women's Foreign Mis- sionary Society.....		43 86
Building Funds.....		1140 00
		<hr/>
		\$2524 80

### EXPENDITURES.

Managers' Expenditure.....		898 37
SABBATH SCHOOL:		
Sabbath School Supplies.....	77 03	
French Evangelization.....	20 00	
Home Missions.....	20 00	
Hospital for Sick Children.....	20 00	
	<hr/>	137 03
Ladies' Aid Society.....		36 45
Building Fund.....		1101 83
		<hr/>
		\$2173 68

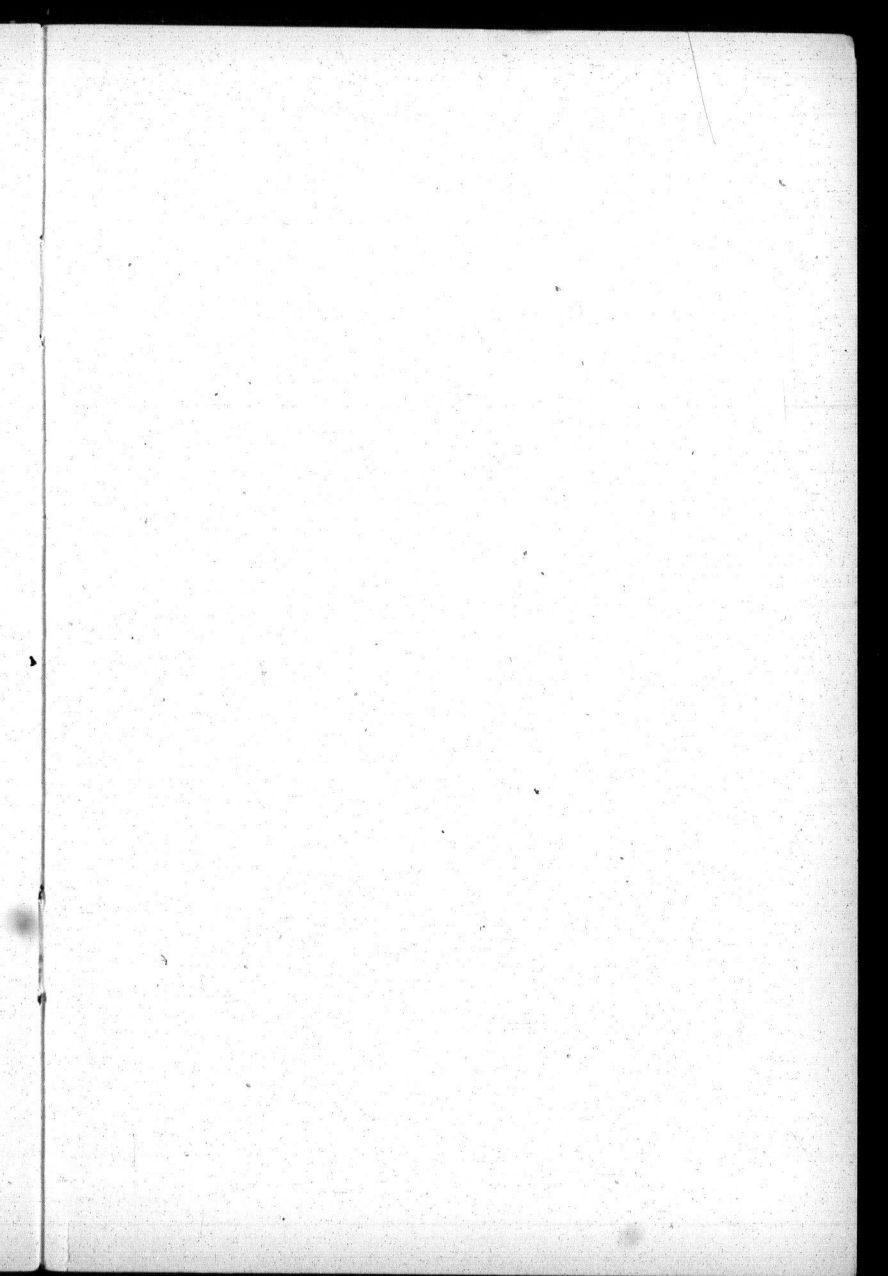
### BALANCE ON HAND.

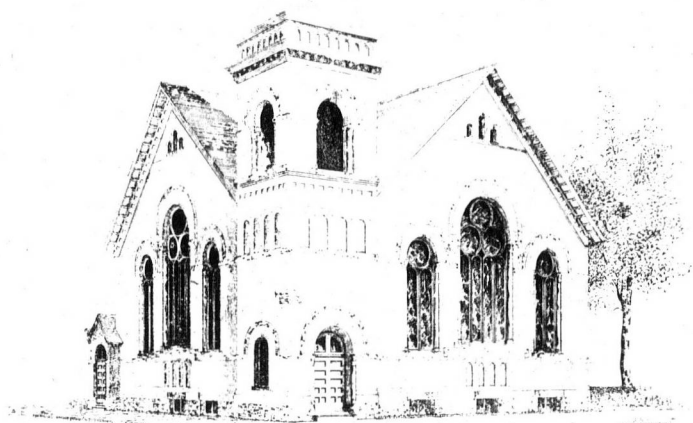
Ladies' Aid Society.....	96 20
St. Enoch's Auxiliary Women's Foreign Mis- sionary Society.....	43 86
Treasurer Managers.....	173 09
Treasurer Building Committee.....	38 17
	<hr/>
	\$351 32

# LIST OF MEMBERS OF ST. ENOCH'S CHURCH.

Armstrong, Maggie.....	510 Ontario		Gurnett, John J.....	10 Laurier Av.	C
Allen, Jennie.....	10 Metcalfe		" Rachel H.....	"	C
Adams, Mrs. Mary A.....	370 Sackville	C	" Rosa E.....	"	
" Andrew A.....	"	C	" Frank M.....	"	
" Sarah A.....	"	C	" Ernest C.....	"	
Applegath, Walter.....	74 Amelia	C	" Arthur R.....	"	
" Mrs.....	"	C	" Eva C.....	"	
" Mabel.....	"		" Mabel E.....	"	
" Maggie.....	"		" Hilda H.....	"	
" Stewart.....	"		Gibson, Mrs.....	48 Rose Av.	C
Bethune, Mrs. Ann.....	21 Metcalfe	C	" Miss H.....	"	C
" Jennie.....	"	C	" Miss Lizzie.....	"	C
" Maggie.....	"	C	" Miss Jennie.....	"	C
" Lizzie.....	"	C	" John F.....	"	
Black, Miss Maggie.....	"	C	Gibson, James.....	12 N. Mutual	C
Bayliss, Mrs. G.....	605 Parliament	C	" Mrs. James.....	"	C
Bennett, H. H.....	3 Metcalfe	C	Gorrie, Mrs. Wm.....	300 Seaton	C
" Mrs. H. H.....	"	C	" Mrs. Wm.....	350 Sackville	C
" Harry.....	"	C	Graham, Thos.....	"	
" Mrs. M.....	"	C	" Mrs. Thos.....	"	
Bride, Mrs.....	2 Sackville Pl.	C	" Robert.....	"	
" Wm. John.....	"		" Lillie.....	"	
Bell, Mrs. Agnes.....	18 Wellesley Av.	C	" Thomas.....	"	
" James A. T.....	"	C	" Stanley.....	"	
" John.....	"		" Mabel.....	"	
" Willie.....	"		" Hamilton.....	"	
Clark, Mrs.....	255 Gerrard	C	Guardhouse, Mrs. E.....	14 Metcalfe	
" Miss K.....	"	C	" Fred.....	"	
" Wm.....	"		" May.....	"	
Crawford, Wm.....	14 Dermot Pl.	C	Harrison, Robt. S.....	rear 608 Ontario	C
" Mrs.....	"	C	" Mrs.....	"	C
" Edith.....	"		" Robt R.....	"	
" Mamie.....	"		" Margaret J.....	"	
" Willie.....	"		" Walter L.....	"	
Cameron, Mrs. Alex.....	37 Gifford	C	" Gordon F.....	"	
" Alice.....	"	C	" John D. S.....	"	
" Grace.....	"	C	" Roy S.....	"	
" Bruce.....	"		Hogg, J. W.....	27 Metcalfe	C
Carroll, Mrs. Nellie.....	39 Metcalfe	C	" Mrs. J. W.....	"	C
" Lillian E.....	"		" Ada.....	"	
" Anson M.....	"		" Ernest.....	"	
" Harry K.....	"		Hunter, Mary.....	129 Winchester	C
Couch, Wm.....	1 Alpha Av.		" J. A.....	"	
" Mrs. Wm.....	"		Hill Mrs.....	123	C
Campbell, Jno. W.....	1 Laurier Av.	C	Hood, Chas.....	321 Wellesley	C
" Mrs.....	"	C	" Mrs. Chas.....	"	C
" Mrs. Mary.....	"	C	Johnston, Mrs. A.....	605 Parliament	C
" Percy W.....	"		" Miss J.....	"	C
" Florence T.....	"		Knox, John.....	124 Rose Av.	C
Dallas, Thos.....	73 Winchester	C	" Mrs.....	"	C
Dickson, Wm.....	14 Dermot Pl.		" Willie.....	"	
" Mrs. Wm.....	"	C	Laverty Mrs.....	66 Metcalfe	C
Fischer, Wm.....	640 Ontario	C	" Maude E.....	"	C
" Maggie D.....	"	C	Lasher, Mrs.....	352 Wellesley	C
" Lizzie D.....	"	C	" Florence.....	"	
Fraser, John.....	10 Gildersleeve Av.		" Earl.....	"	
" Mrs. John.....	"		Laird, John B.....	56 Winchester	C
" Jennie.....	"		" Mrs. John B.....	"	C
" John.....	"		" Agnes.....	"	
" James.....	"		" Melie.....	"	
" Robert.....	"		" Bee.....	"	
" Mary.....	"		Leitch, J. D.....	535 Parliament	C
" Maggie.....	"		" Mrs.....	"	C
" Mrs. Jennie.....	"	C	Mitchell, Wm.....	32 Rose Av.	C
Finch, Thos W.....	Bleeker		" Mrs. Wm.....	"	C
" Mrs. T. W.....	"		" Duglass.....	"	
" Emma.....	"		" M's.....	"	C
" Harry.....	"		McInnes, Mrs. M.....	109 Winchester	C
" Edwin.....	"		" Belle V.....	"	C
" Fricilla.....	"		McFadyen, Arch.....	327 Sumach	C
" Florence.....	"		" Mrs. Arch.....	"	C
" Louisa.....	"		" Arch.....	"	
" Thomas.....	"		" Kate.....	"	
" Frederick.....	"		" Harry.....	"	
Gurnett, Mrs. J.....	10 Laurier Av.	C	" Donald.....	"	

McFadgen, Allie.....	"		Millar, Robert.....	21 Alpha Av.	
" Jack.....	"		" Joseph.....	"	
McDonald, Mrs.....	345 1/2 Wellesley	C	" Metissa.....	"	
" Miss H.....	"	C	Nelson, Mrs. Lillie.....	327 Sumach	C
" Miss J.....	"		Niblock, Mrs. H.....	21 Laurier Av.	C
McGlashan, Jas.....	373	C	" John J.....	"	C
" Mrs. Jas.....	"	C	" Andrew M.....	"	C
" Jessie.....	"	C	" Minnie E.....	"	C
" James.....	"		Niven, Mrs.....	666 Ontario	C
" Alex.....	"		" Frank.....	"	
McClea, Mrs.....	16 Alpha Av.		Patterson, Rev. G. C.	14 Homewood Av.	C
" Annie.....	"		Polson, Miss Aggie.....	43 St. James	C
" Emma.....	"		Potter, Mrs. C.....	7 Wellesley Cot.	C
McQuoid, Miss.....	13		" Wm.....	"	
McRae, Miss S. C.....	Sackville	C	Preston, Miss Lizzie.....	330 Wellesley	
" Norman.....	"		Pretty, Geo.....	6 Laurier Av.	
" Walter.....	"		" Mrs. Geo.....	"	
McCuaig, Mrs.....	566 Parliament	C	" Vera.....	"	
" Oliver.....	"		" Olive.....	"	
McGregor, P. G.....	43 St. James Av.	C	" Lily.....	"	
" Mrs.....	"	C	Parks, J. G.....	369 Gerrard	
" Jennie.....	"		" Mrs.....	"	
" Walter.....	"		" Lyllly L.....	"	
" John.....	"		" Jessie.....	"	
" George.....	"		" Maggie.....	"	
" Rob Roy.....	"		" Bella.....	"	
" Ellen.....	"		" Susan.....	"	
McLean, A. C.....	41 Salisbury Av.	C	" Sophia C.....	"	
" Mrs. A. C.....	"	C	Petrie, Wm.....	546 Ontario	C
" Ethel.....	"		" Mrs. Wm.....	"	C
" Wilfred.....	"		" Mary.....	"	
" Ormond.....	"		" Jessie.....	"	
" Rubie.....	"		" Katie.....	"	
" Leonard.....	"		" Charlotte.....	"	
McDonald, Jas.....	377 Carlton		" Lizzie.....	"	
" Mrs. Jas.....	"		" Willie.....	"	
" Angus.....	"		" Bertha.....	"	
" James.....	"		Trimble, Willie.....	"	
McIntyre, L. J.....	56 Metcalfe	C	Robertson, Mrs. Geo.....	323 Carlton	C
" Mrs. L. J.....	"	C	" Annie.....	"	
" Florence.....	"		" George W.....	"	
" Daisy.....	"		" Charlie.....	"	
" John.....	"		" Edgar.....	"	
Murdoch, Kenneth.....	98 Oak	C	" Ralph.....	"	
" Mrs.....	"	C	Slatter, Mrs. J.....	458 Gerrard	
Major, Mrs.....	453 Sackville	C	Simpson, Mrs.....	2 Sackville Ter.	C
" Elsie.....	"		" Annie.....	"	
Moore, Hugh.....	390 Wellesley	C	" Mina.....	"	
" Mrs. Hugh.....	"	C	" Boice.....	"	
" Hugh.....	"		" Willie.....	"	
" Jennie.....	"		" Charlie.....	"	
Mitchell, Mrs. Thos.....	162 Amelia	C	" Eddie.....	"	
" Lillie.....	"		Smith Mrs.....	129 Winchester	C
" Thomas.....	"		Silby, Wm.....	49 Metcalfe	
" Ernest.....	"		" Mrs. Wm.....	"	C
" Douglas.....	"		" Bennie.....	"	
Mills, John A.....	364 Sumach	C	" John.....	"	
" Mrs. John A.....	"	C	" Eliza.....	"	
" Walter G.....	"		" Willie.....	"	
" Janet S.....	"		" Douglas.....	"	
" Christina M.....	"		" Jennie.....	"	
" John A.....	"		Samo, M.....	471 Sackville	
Martin, David.....	325		Stevens, C. B.....	357 Wellesley	
" Mrs. David.....	"		" Mrs. C. B.....	"	C
" Harry.....	"		" B. H.....	"	C
" Clara.....	"	C	" Clara O.....	"	
" Jessie.....	"		" Ida May.....	"	C
" Jennie.....	"		" Wm. E.....	"	
" Frank.....	"		Tarbayne, Mrs. Jessie.....	43 Metcalfe	C
" Winnifield.....	"		" Willie.....	"	
Millar, Wm.....	21 Alpha Av.		" Edith M.....	"	
" Mrs. Wm.....	"		Woodrow, Mrs. I.....	Sackville	C
" Charlotte.....	"		Yates, Miss.....	90 Howard	
" Alice.....	"				





St. James' Presbyterian Church Toronto

Garbutt & McEwen Architects