

Technical and Bibliographic Notes / Notes techniques et bibliographiques

The Institute has attempted to obtain the best original copy available for filming. Features of this copy which may be bibliographically unique, which may alter any of the images in the reproduction, or which may significantly change the usual method of filming, are checked below.

L'Institut a microfilmé le meilleur exemplaire qu'il lui a été possible de se procurer. Les détails de cet exemplaire qui sont peut-être uniques du point de vue bibliographique, qui peuvent modifier une image reproduite, ou qui peuvent exiger une modification dans la méthode normale de filmage sont indiqués ci-dessous.

Coloured covers/  
Couverture de couleur

Covers damaged/  
Couverture endommagée

Covers restored and/or laminated/  
Couverture restaurée et/ou pelliculée

Cover title missing/  
Le titre de couverture manque

Coloured maps/  
Cartes géographiques en couleur

Coloured ink (i.e. other than blue or black)/  
Encre de couleur (i.e. autre que bleue ou noire)

Coloured plates and/or illustrations/  
Planches et/ou illustrations en couleur

Bound with other material/  
Relié avec d'autres documents

Tight binding may cause shadows or distortion along interior margin/  
La reliure serrée peut causer de l'ombre ou de la distorsion le long de la marge intérieure

Blank leaves added during restoration may appear within the text. Whenever possible, these have been omitted from filming/  
Il se peut que certaines pages blanches ajoutées lors d'une restauration apparaissent dans le texte, mais, lorsque cela était possible, ces pages n'ont pas été filmées.

Additional comments: /  
Commentaires supplémentaires:

Coloured pages/  
Pages de couleur

Pages damaged/  
Pages endommagées

Pages restored and/or laminated/  
Pages restaurées et/ou pelliculées

Pages discoloured, stained or foxed/  
Pages décolorées, tachetées ou piquées

Pages detached/  
Pages détachées

Showthrough/  
Transparence

Quality of print varies/  
Qualité inégale de l'impression

Continuous pagination/  
Pagination continue

Includes index(es)/  
Comprend un (des) index

Title on header taken from: /  
Le titre de l'en-tête provient:

Title page of issue/  
Page de titre de la livraison:

Caption of issue/  
Titre de départ de la livraison

Masthead/  
Générique (périodiques) de la livraison

This item is filmed at the reduction ratio checked below /  
Ce document est filmé au taux de réduction indiqué ci-dessous.

10X	12X	14X	16X	18X	20X	22X	24X	26X	28X	30X	32X
<input type="checkbox"/>	<input type="checkbox"/>	<input type="checkbox"/>	<input type="checkbox"/>	<input type="checkbox"/>	<input type="checkbox"/>	<input type="checkbox"/>	<input type="checkbox"/>	<input type="checkbox"/>	<input checked="" type="checkbox"/>	<input type="checkbox"/>	<input type="checkbox"/>

# CANADIAN CONTRACT RECORD

A WEEKLY JOURNAL OF

PUBLIC • WORKS • TENDERS •  
ADVANCE • INFORMATION •  
AND • MUNICIPAL • PROGRESS

EVERY

WEDNESDAY

This paper reaches every week the Town and City Clerks, Town and City Engineers, County Clerks and County Engineers Purchasers of Municipal Debentures and leading Contractors in all lines throughout Canada.

VOL. II. MAY 16, 1900 No. 15.

**THE CANADIAN CONTRACT RECORD,**  
PUBLISHED EVERY WEDNESDAY  
an Intermediate Edition of the "Canadian Architect and Builder."  
Subscription price of "Canadian Architect and Builder" (including "Canadian Contract Record"), \$2 per annum, payable in advance.  
**H. MORTIMER PUBLISHING COMPANY**  
of Toronto, Limited,  
Publishers,  
CONFEDERATION LIFE BUILDING, TORONTO.  
Telephone 2362.  
Branch Office:  
Imperial Building, Montreal.  
Telephone Main 2299.  
Advertising Rates on application.

## To Stone Crushers

Offers will be received by the undersigned up to MAY 21ST for crushing about 300 cords of hard stones, in the pit, at a price per cord.  
The lowest or any tender not necessarily accepted.  
WM. FAIRLEY, Village Clerk,  
Norwich, Ont.

## WANTED

Correspondence with a graduate in Architecture with a view to junior partnership in a growing town. Address full particulars as to experience, etc., to Box 38, CONTRACT RECORD.

## TENDERS

For the construction of Cement Sidewalks and a Sewer in the Municipality of the Village of Blyth will be received by the undersigned up to 22ND INST., from whom also all necessary information relating to plans and specifications may be obtained.  
The lowest or any tender not necessarily accepted.  
T. W. SCOTT, Clerk,  
Blyth, Ont.

## TENDERS

Tenders will be received by the undersigned up to MAY 21ST for Cement Sidewalks at 50 much per square foot. Specifications on application to  
F. S. SCOTT,  
Clerk Village Brussels.

## TENDERS

Will be received by the undersigned up to 4 o'clock, p. m., of MONDAY, MAY 28TH, 1900, for the construction of a Vivified Bri. l Pavement, on Concrete Bed, on King street from the post-office to William street, in the city of Chatham, Ont., according to plans and specifications, conditions, etc., on file in the engineer's office in the said city.  
The Council reserves the right to reject any or all tenders.

W. G. MERRITT,  
Clerk of Chatham.

## WANTED

Correspondence with Town Engineers or Surveyors object, co-operation in design and construction of Sewerage and Waterworks Systems. Address, "SPECIALIST," CONTRACT RECORD.

## Tenders Wanted

The Council of the County of Oxford invite tenders for a New Brick Building to be erected on the Court House Square in Woodstock. And also for the complete installation of a New Plant for Heating all the County Buildings by the "Webster System of Steam Heating."  
Sealed tenders, addressed to the County Clerk, will be received up to noon on

TUESDAY, THE 29th INST.

Plans and specifications may be seen and all information obtained from the Architect, Mr. Alex White, No. 45 Wellington Street, Woodstock.  
The lowest or any tender not necessarily accepted.

JAMES WHITE,  
County Clerk.

Woodstock, Ont., May 8, 1900.

## Smith's Falls WATER WORKS AND SEWERAGE WORKS

Sealed tenders will be received by the Town Clerk, underdnd "Tenders for Waterworks and Sewers, until 5 p.m. on

TUESDAY, MAY 22ND, 1900,

for the construction of about 13,000 lineal feet of Tile Sewers, and about 2,730 lineal feet of Water Mains, nearly all in rock trenches.

Plans and specifications to be seen at the office of the Town Clerk, Smith's Falls, Ont., or at the office of the Chief Engineer, Toronto.

No tender necessarily accepted.  
This notice will appear on May 9th and May 16th only.

B. E. SPARHAM,  
Town Clerk,  
Smith's Falls, Ont.

WILLIS CHIPMAN,  
Chief Engineer,  
103 Bay Street, Toronto, Ont.  
May 9th, 1900.

## TENDERS

Will be received up to FRIDAY, MAY 25TH, 1900, for the construction of the following works:

- About 700 square feet of granolithic walk on the north side of Kent street, with granolithic kerb.
- 1480 lineal feet of 9 inch tile sewer, with 6 inch cellar drain and 45 side drains, on Lindsay and Melbourne streets.

Plans and specifications may be seen and forms of tender obtained at the town clerk's office, also at the office of the engineer, W. T. Ashbridge, C. E., Temple Building, Toronto.

The lowest or any tender not necessarily accepted.

ALEX. JACKSON,  
Chairman Board of Works.



## Notice to Contractors

### TENDERS FOR BRICK AND CEMENT

Tenders will be received, by registered post only, addressed to the Chairman of the Board of Control, City Hall, Toronto, up to noon on

Wednesday, May 23rd, 1900,

for the annual supply of Brick and Cement required by the Department of Works and Water Works during the year ending May 31st, 1901.

Contents of envelopes containing tenders must be plainly marked on the outside.

Specifications may be seen and forms of tender obtained at the office of the City Engineer, Toronto.

A deposit on the firm of a marked cheque, payable to the order of the City Treasurer, for the sum of 2 1/2 per cent on the value of the work tendered for, must accompany each tender, otherwise they will not be entertained.

Tenders must bear the bona fide signatures of the contractor and his secretary, or they will be ruled out as informal.

Lowest or any tender not necessarily accepted.

E. A. MACDONALD (Mayor),  
Chairman Board of Control.

City Hall, Toronto, May 24th, 1900

## PROPOSALS FOR WATERWORKS

### TOWN OF MEDICINE HAT

Sealed proposals, addressed to W. N. Adsit, Town Clerk, Medicine Hat, N.W.T., will be received up to 8 o'clock p.m., on

1st JUNE NEXT,

for the construction of a System of Waterworks, and for furnishing materials and supplies therefor.

Plans and specifications may be seen at the Town Clerk's office, Medicine Hat, and at the office of H. N. Kahan, Consulting Engineer, City Hall, Winnipeg, Manitoba, from whom specifications and forms of tender may be obtained.

Each tender is to be accompanied by a cash deposit or marked cheque for the sum of 5 per cent of the amount of the tender.

The town reserves the right to reject any or all tenders.

W. N. ADSIT, Town Clerk,  
Medicine Hat, N.W.T.

## NOTICE TO BRIDGE BUILDERS

Sealed tenders, marked "Tender for Kempville Bridge," for the Superstructure of a

### STEEL SWING BRIDGE

over the south branch of the Rideau River, in the Village of Kempville, Ont., will be received by the undersigned, until the arrival of the last mail on SATURDAY, JUNE 2ND, 1900.

Plans, specifications, etc., may be seen and all other information obtained at the office of the undersigned, in Carleton Place, Ont., and at the drug store of Angus Buchanan, Chairman of Bridge Committee, Kempville, Ont.

Also sealed tenders, marked "Tender for Piers, Kempville Bridge," for the building of a Concrete Pylon Pier and Two Abutments, for the above bridge, will be received at the same time, apply same places for information.

The lowest or any tender, in either case, not necessarily accepted.

E. T. WILKIE, C.E.,  
Carleton Place, Ont.  
Engineer for Village of Kempville, Ont.

## CONTRACTS OPEN.

ALVINSTON, ONT.—Drake's basket factory will be rebuilt.

PICTOU, N.S.—Arrangements have been made for a water supply.

BEDFORD, QUE.—A residence will be built by W. J. Cockerline.

GEORGEVILLE, QUE.—Charles Hutchins intends building a cheese factory.

PEMBROKE, ONT.—It is said that J. W. Munro may build a saw mill here.

BALDWIN, ONT.—The ratepayers have decided to build a new school house.

KINGSVILLE, ONT.—The glass company will shortly erect packing rooms.

WHEATLEY, ONT.—William Heatherington will likely build a new residence.

EDMUNDSTON, N.B.—James Hay intends erecting a saw mill near this place.

PORTAGE LA PRAIRIE, MAN.—The Central Electric Co. will remodel their plant.

WESTMOUNT, QUE.—The Grey Nuns have given a site for a new Catholic church.

CAMPBELLFORD, ONT.—It has been decided to build a Roman Catholic church here, of stone.

MITCHELL, ONT.—The town proposes laying cement sidewalks this year to the value of \$8,500.

GRAND MERE, QUE.—The Laurentide Pulp Co. are building the burned portions of their works.

STARHMORE, ONT.—The township of Roxborough will construct a number of drains this summer.

OSHAWA, ONT.—J. F. Grierson invites proposals up to June 4th for purchase of \$55,000 of debentures.

KINCARDINE, ONT.—The Government will be asked to make harbor improvements here to cost \$9,000.

BRACONDALE, ONT.—Miller & Son are preparing for an addition of 25,000 feet of glass to their greenhouses.

THAMESFORD, ONT.—Plans are being prepared for a brick parsonage in connection with the Episcopal church.

GRANENHURST, ONT.—The by-law to borrow \$10,000 to build town hall and improve streets was carried last week.

ROSSLAND, B. C.—The by-law to raise \$25,000 for a fire hall and library was ratified by the ratepayers last week.

ST. ANDREWS, N. B.—B. F. DeWolfe invites tenders up to 21st inst. for laying a sewer on the Alms House premises.

RAT PORTAGE, ONT.—E. F. Head, architect, wants tenders by 19th inst. for erection of brick veneered residence.

DUNNVILLE, ONT.—The town is offering for sale \$10,000 of sinking fund debentures. J. W. Holmes is town clerk.

WILKESPORT, ONT.—O. Bishop, clerk township of Sombra, invites tenders up to June 2nd for the construction of drains.

HUNTSVILLE, ONT.—W. Proudfoot has taken tenders on a brick veneered residence for Lewis Keown, at Cain's Corners.

FORT WILLIAM, ONT.—The Ogilvie Milling Co. announce their intention of proceeding with the erection of new mill here.

LISTOWEL, ONT.—The Listowel Furniture Co. are about to ask tenders for erection of factory. Dr. Rutherford is a director.

MONCTON, N. B.—Tenders for building subway at Amherst, N. S., are invited by the Intercolonial Railway up to Friday, 18th inst.

SYDNEY, C. B.—The ratepayers have authorized the council to borrow \$200,000 for street improvements, sewerage system, fire service, etc.

LETHBRIDGE, N. W. T.—Henderson & Downer are excavating for their brick

block, which will be two storeys with plate glass front.

CHAPLEAU, ONT.—J. McN. Austin wants bids by 22nd inst. for erection of Methodist parsonage, 25x35 feet. Plans at Mercury office.

MAISSONEUVE, QUE.—A proposition has been submitted to the council to build a large summer hotel here, for which plans have been prepared.

COURTLAND, ONT.—John Burnett, clerk township of Middleton, wants tenders by June 2nd for building wooden bridge over Big Otter creek.

LEAMINGTON, ONT.—Edgar Jeffrey will erect a residence, for which some of the contracts have been let.—A brick block will be built by William Irwin.

KINGSTON, ONT.—Arthur Ellis, architect, has reported on the question of adding an additional storey to the medical building of Queen's University.

CRUMLIN, ONT.—Edward Parker, this place, invites bids up to 21st inst. for erection of wind mill and pump for school section No. 2, North Dorchester.

BRANTFORD, ONT.—Voting on the by-law to raise \$12,000 for hospital improvements and \$25,000 for flood prevention works will take place on June 6th.

BERLIN, ONT.—It is said that Colonel Holmes, M. P., will recommend the Military Department at Ottawa to erect an armory here, 40x60 ft., two storeys and basement.

HALIFAX, N. S.—The council will purchase 2,000 ft. of fire hose.—Plans are in course of preparation for the new dry goods warehouse to be built by Kenny & Co.

VANCOUVER, B. C.—Last week the ratepayers carried a by-law to raise \$80,000 for school purposes, and defeated a by-law to borrow \$12,000 for new cemetery.

PERTH, ONT.—A three storey brick block will be built this summer by M. Drennan, to be 37x54 ft., of red pressed brick. Plans by M. C. Ryan, Smith's Falls.

ST. MARY'S, ONT.—A syndicate has been formed to open up extensive stone quarries in this vicinity. A branch line of railway to the quarries has been surveyed.

ST. CATHARINES, ONT.—Mr. Allan has submitted to the school board plans for heating St. Paul's ward school.—A movement is on foot to erect a new isolation hospital.

NEWCASTLE, N. B.—The town council has decided to purchase a stone crusher and engine to crush stones for the streets.—The school trustees purpose issuing bonds for \$6,000.

SANDYCOE, ONT.—There is a movement on foot here to open a summer resort, and to induce the Metropolitan Railway Co. to extend their road to this place and Craigvale.

SAULT STE. MARIE, ONT.—W. H. Hearst, secretary building committee, invites tenders up to 25th inst. for erection of stone schoolroom, 50 x 50 feet, in connection with Methodist church.

DORCHESTER STATION, ONT.—Bids are invited by W. B. Lane, clerk township of North Dorchester, up to 28th inst., for repair of Norsworthy drain. Plans at office of F. W. Farncombe, C. E., London.

FREDERICTON, N. B.—Tenders are invited up to Tuesday, 22nd inst., for the erection of brick and stone building for University of New Brunswick. Plans by G. E. Fairweather, architect, St. John.

CHATHAM, N. B.—At recent meeting of town council the board of works were empowered to engage an engineer to take levels in connection with proposed waterworks system. W. S. Loggie is mayor.

PARRY SOUND, ONT.—The town engineer has presented a report on the cost

of proposed water works extension.—Inland & Bundy have invited tenders for erection of printing office for the North Star.

HIBBERT, ONT.—The township council of Hibbert has instructed F. W. Farncombe, C. E., of London, to make a survey and estimate of cost of proposed drainage work in that township. Particulars from James Jordan, clerk.

KINNEAR'S MILLS, QUE.—Tenders are asked for construction of telephone line from Thetford Mines to this place, a distance of twelve miles. Particulars from W. Warcup, secretary-treasurer Kinnear's Mills Telephone Co.

PENETANGUISHENE, ONT.—The First Brook Box Co. expect to commence the building of their factory here at an early date.—Mr. Shanahan has asked the council for a loan of \$5,000 to assist him in extending his carriage factory.

LONDON, ONT.—H. C. McBride, architect, is this week taking tenders on erection of double brick residence.—Ormsby Graydon, city engineer, asks tenders up to 5 p. m. to-day (Wednesday) for construction of tile sewer on Dundas street.

STRATFORD, ONT.—The plans of the factory to be erected by George McLagan show a brick and stone structure, three stories, 53x302 ft., with concrete floors, fireproof doors, elevators, large tower, and auxiliary water supply for sprinkler system.

WHITBY, ONT.—A committee of the county council met last week to select plans for proposed House of Refuge. Two of these met with favor, the cost of carrying them out being about \$12,000. A decision will likely be reached on the 28th inst.

WINDSOR, ONT.—United States capitalists have submitted a proposition to the municipalities to build an electric railway from Windsor to Ruthven and from Kingsville to Leamington. Some of the municipalities have already granted franchises.

GRAND FORKS, B. C.—The ratepayers will shortly vote on a by-law to borrow \$50,000 for the following purposes. To extend water and electric light system, to erect an isolation hospital and fire hall, to purchase fire appliances, and to improve the streets.

COLLINGWOOD, ONT.—R. E. Speakman, C. E., of Toronto, has prepared plans for a sewerage system for this town.—It is announced that the Dominion supplementary estimates will contain an appropriation of \$200,000 for harbor improvements here.

LOUISBURG, C. B.—Tenders are wanted by the Louisburg Electric Water & Power Co. for trenching and laying of 4,000 feet of 8 inch and 9,000 feet of 6 inch water pipe. Plans at office of Dr. O'Neil, Louisburg, or M. G. Henniger, engineer, Sydney.

HINTONAURG, ONT.—Council has decided to submit a by-law to raise \$25,000 by debentures for waterworks extension.—The ratepayers will be asked to provide \$3,500 for the purchase of hose and hose reels, the erection of a fire station, and installation of a fire alarm system.

PORT COLBORNE, ONT.—M. J. Hogan and A. R. Macdonell, contractors for the harbor works, are placing large orders for plant and material.—H. Carscallen was in town recently in connection with the blast furnace project. The date for voting on the by-law has not yet been fixed.

ALMONTE, ONT.—F. W. Ashe, manager of the Union Bank, is said to have purchased a block of land at Green Point on which to build a cottage.—The provincial road instructor in an address here last week advocated the construction of artificial stone walks and the employment of a stone crusher.

**PORT ARTHUR, ONT.**—Chicago capitalists, including D. S. Wegg and G. H. Pope, have been incorporated as the Anglo-American Power Co., with capital of \$5,000,000. The company purpose acquiring the Jenson water powers on the Kamistiquia river near this place, and developing electric power.

**RENFREW, ONT.**—Thomas Low is endeavoring to float a company to develop the water power of the Bonnechere river for industrial and other purposes.—The chairman of the streets committee has been instructed to invite tenders for construction of proposed street improvements, from plans by engineer McCubbin.

**TRURO, N. S.**—Plans submitted by Lee & Coffin, civil engineers, have been accepted for a sewerage system for the town, to cost about \$100,000. The rate-payers have authorized the expenditure of \$26,600 for the first section, and the work will be proceeded with by day labor, under the superintendence of Professor Lee.

**WINNIPEG, MAN.**—The C. P. R. are having plans prepared for the proposed Louise bridge, although it is not yet known whether work will be commenced this year or not.—Stewart Mulvey, secretary school board, invites tenders up to 21st inst. for completion of the Machray school. Plans by H. S. Griffith.—Building permits have this year been issued to the value of \$331,000.—The Manitoba Government is inviting tenders for construction of steam ferry boat for use on the Saskatchewan river at Battleford.

**QUEBEC, QUE.**—A movement is on foot to have the graving dock made wider than at first proposed.—The Jacques Cartier Water Power Co. have purchased the property on corner of St. John and D'Anteuil streets, and will have plans prepared at once for a three storey granite and stone building to be used as offices and distributing station.—The president of the Board of Harbor Commissioners has returned from England and France, where he made inspections of harbor improvements with a view to adopting modern construction in connection with the proposed work here.

**HAMILTON, ONT.**—Work is expected to be started shortly on the National Cycle and Automobile Company's factory, the plans for which have been amended so as to reduce the cost.—The Board of Education will ask the city council to lay cement walks in front of the schools on Hunter and Stinson streets and Victoria and West avenues.—The council has given notice of its intention to construct a large number of cement sidewalks.—The harbor and beach committee has in contemplation the laying of 1,700 feet of cement walks on the beach along the lake shore, at a cost of about \$4,000.

**MONTREAL, QUE.**—Hutchison & Wood, architects, will superintend the new building to be erected for the Canadian Pacific Telegraph Company. The plans show an eight storey structure.—The Merchants' Bank of Halifax will not build new premises this year, as was intended a short time ago.—The city wants tenders by 17th inst. for supply of granite and artificial paving blocks.—The Canada Atlantic Railway Co. have made application to the city for a site for an elevator and warehouse, estimated to cost about \$500,000.—The Parks and Ferries Committee of the city council, have decided to invite plans for a new incline railway.—New York capitalists are said to have decided to erect a new hotel in this city, on an extensive scale.—The Roman Catholic school board has granted \$8,000 for repairs to St. Ann's school, and has decided to erect a \$35,000 school for boys in St. Eusebe parish.—The extension of Bonsecours market again came up for consideration at last meeting of market committee. Several plans were submitted, the cost of executing some of them being nearly

\$500,000. No definite action was taken.—A new fire station is to be built in Hochelaga ward.—The Health Committee will invite tenders for an ambulance.

**OTTAWA, ONT.**—The C. P. R. expect to have their plans for new station completed in a few days.—Numerous petitions have been received by the board of works for cement sidewalks.—Plans have been prepared for rebuilding the Union depot.—Work on the extension to the Montreal bank will likely be commenced this week.—Tenders closed yesterday for supply of cement for the Soulanges and Trent canals.—The Export Lumber Co. will shortly commence there construction of their dry kiln.—The plans of E. E. Perreault, architect, have been accepted for an addition to St. Joseph's separate school. Tenders for same will be received up to June 5th.—Simpson Fleming has commenced the erection of a tenement house on Wellington street, to cost \$3,500.—The E. B. Eddy Co. will immediately rebuild their works.—It is understood that the House of Mercy on Richmond road will be rebuilt.—Colonel Tilton and Colonel Hodgins have asked the Minister of Militia that permanent buildings be erected at the Rockcliffe Ranges.—L. Simpson, promoter of the cotton mill enterprise, states that plans for the mill have been completed.—The question of purchasing an additional fire engine is being discussed by the city authorities.—A scheme is said to be on foot among the manufacturing interests to erect a large power house at the Chaudiere for the production of electric power.—The city engineering department is preparing plans for the extension of the main sewer to Janeville.—The Ottawa Saw Works Co. will erect a brick structure, two storeys, 95 x 97 feet, to replace their burned factory.—It is probable that one large school will be built instead of the two destroyed by fire.

**TORONTO, ONT.**—A. R. Clarke, of A. R. Clarke & Co., leather and glove manufacturers, has purchased a site on Eastern avenue, just west of Caroline avenue, and will erect thereon a factory to cost \$35,000.—Plans of Methodist schoolroom to be built at Sault Ste. Marie are on view at the office of Henry Simpson, architect, this city. Tenders close 25th inst.—J. F. Brown, architect, invites tenders up to 23rd inst. for erection of brick block at Buik's Falls.—F. H. Herbert, architect, has just taken tenders on the erection of two detached stone and brick residences on west side of Walmer road.—W. G. Mitchell, of Clairmonte, has purchased property on the north side of St. Clair avenue, Deer Park, and will erect a brick residence thereon.—The city invites tenders up to 21st inst. for construction of tile pipe sewer on Columbus avenue.—Dr. John Ferguson, on behalf of the Western hospital, has asked for a site on Lippincott street for a training school for nurses.—The city engineer has under consideration the drainage of that section of the city west of Indian road lying between Queen street and Bloor street. It will be necessary to construct 13,382 ft. of sewers, and it is recommended that one mile of the work be done this year at a cost of about \$10,000. As the sewers cannot enter Humber Bay it will likely be necessary to install a pumping plant.—The Committee on Works has been instructed to report as to the advisability of constructing an overhead bridge or subway at the Lansdowne avenue crossing.—Beaumont Jarvis, architect, has submitted his report on the St. Lawrence market improvements, in which he recommends the rebuilding of the piers and walls, at an additional cost of \$73,000.—The city is inviting tenders for supply of cement.—Building permits have been granted as follows: William Davies Co., brick store, north east corner of College street and Ossington avenue, cost \$3,600; Alex. Manning, addition to warehouse, south side Col-

borne street, near Church, cost \$3,000; E. G. Woodley, two pair semi-detached brick dwellings, Davenport road, opposite Hazelton avenue, cost \$6,400; G. E. Henderson, brick dwelling, south side of Elm avenue, near Huntley street, cost \$7,000; Henry O'Hara, additions and alterations to dwelling, Dunbar road, near Elm avenue, cost \$1,7000; John Wanless, brick store at 366 Yonge street, cost \$5,600.

#### FIRES.

Saw mill and butter factory of the Quebec Seminary at St. Joachim, Que. They will be rebuilt at once.—The Peckham saw mill at Vandecar, Ont., totally destroyed.—Hunt's saw mill at River View, Ont; no insurance.—Dry kiln of the Royal City Mills Co., at Vancouver B.C.; loss \$100,00.—Saw mill and sash and door factory of John McLaurin at Vankleek Hill, Ont.—Hotel Strathcona at Shownigan Lake, B. C., loss \$20,000.—Brick school at Hampstead, Ont.; loss \$2,100.

#### CONTRACTS AWARDED.

**ALMONTE, ONT.**—Town debentures: J. M. Munro, successful tenderer.

**KINGSTON, ONT.**—Simmons Bros. have secured the contract for heating apparatus for judges' chambers in court house.

**DIGBY, N. S.**—Methodist parsonage.—Augustus Turnbull, contractor.—\$1,600 of debentures: J. C. McIntosh, purchaser, at 101½.

**YARMOUTH, N. S.**—The tender for the steam pumping plant for the town has been awarded to Geo. W. Johnston, of this place, for the sum of \$6,967.

**OTTAWA, ONT.**—Machine shop for E. B. Eddy Co.; Holbrook & Sutherland, contractors. Building will be 180 x 50 ft., two storeys brick, with tar and gravel roof.

**MONTREAL, QUE.**—Residence on Huicheson street, Montreal annex, for Mr. Foteaux; A. Dubreuil, architect; A. Foteaux, contractor; brick and stone, cost \$4,000.

**HAMILTON, ONT.**—Tenders were opened last week for laying of sewer pipes. The successful tenderers and the prices are as follows.—Reche & McKnight—Clyde street, 68 cents a foot; Herkimer street, 78 cents; Rebecca street, 65 cents; Hughson, Stuart to Barton, 59 cents; Locke street, 53 cents; Caroline street, 88 cents; Birge, 70 cents; Hughson, King to Jackson, 58 cents; Hughson, Gore to Rebecca, 65 cents; Jackson street, 60 cents; Ferrie street, 58 cents. J. J. Armstrong—Herkimer street, \$1.10 a foot; Rebecca, 42 cents; Hughson, Stuart to Barton, 37 cents; Locke street, 38 cents; Murray street, 35 cents; Caroline street, \$1.50; Birge street, 85 cents; Hughson, King to Jackson, 43 cents; Hughson, Gore to Rebecca, 40 cents; Jackson street, 70 cents; Ferrie street, 34 cents; Main street, 39 cents. D. Newlands—Clyde street, 95 cents a foot; Herkimer street, 98 cents; Rebecca street 45 cents; Hughson, Stuart to Barton, 34 cents; Locke street, 46 cents; Murray street,

**THE Central Canada Loan & Savings Company**

Cor. King and Victoria Sts., TORONTO  
Highest Market Prices Paid for

**MUNICIPAL DEBENTURES**

F. W. BAILLIE,  
Secretary

E. R. WOOD,  
Managing Director

37 cents; Hughson, King to Jackson, 39 cents; Hughson, Gore to Rebecca, 39 cents; Jackson street, 75 cents; Ferric street, 39 cents; Main street, 42 cents.

### PAINTING STEAM PIPES AND RADIATORS.

J. S. Lyn, Ontario, writes to the Painters' Magazine that he was employed by a certain party of his town to paint some steam coils a light buff. He painted them while cold with a mixture of white lead, chrome yellow, oil and turpentine. The steam was turned on at once after the application of the paint, and he has been informed by his patron that the paint was no good, because it peeled off. He asks if his treatment was right.

ANSWER.—Your treatment of the pipes was not the proper one to follow. In the first place, your pigments were not of the right selection, because white lead and chrome yellow will invariably turn brown on heated steam pipes, and in the second place, an oily paint will blister under these conditions and at the same time darken the color still more. It requires zinc white as a base for such paint, with a coloring matter, that is not easily effected by great heat. For a light buff, we should use raw Italian sienna for coloring matter, and if this should make too dark a buff, add some zinc yellow (permanent yellow). The zinc white should be of best quality, preferably ground in dammar varnish, or if ground in linseed oil, it should be washed with turpentine to extract the surplus oil. The colors should be ground fine in oil or japan, it does not matter which, because it requires but little for a light buff tint. The white and colors should then be thinned to a creamy consistency and to this mixture a good pale baking varnish added in sufficient quantity to make a glossy paint. If such paint is applied when the pipes are fairly cool and the steam turned on when the paint is about to set, no apprehension need be felt as to the result, because the paint will bake onto the pipes, neither blistering, peeling, cracking nor chipping. But even here the steam should not be turned on in full force until the paint is dry or hard to the touch. For other tints than light buff, we would suggest such colors as ultramarine blue, drop black, burnt sienna, red oxide or tuscan red, indian red, yellow ochre, chrome red, madder lake, as they may come into use, but beware of chrome yellow, chrome green, prussian blue, etc.

### THE NAIL ITEM IN MAKING ESTIMATES.

In estimating the cost of work it is necessary that the approximate amount of nails required to complete the work should be known. Since the introduction of the wire nail the number of nails required to do a given piece of work is not the same as when the barbarous "cut-nail" was in vogue, therefore the rules given for the latter will not apply to the former, says the Carpenter and Builder. The table given herewith is nearly correct, and is based on experience. For 1,000 laths it takes 5½ pounds wire lath nails; 1,000 shingles, 5 inches to weather, 5 pounds shingle nails; 1,000 feet 6-inch sidings, 18 pounds 2½-inch wire nails. 1,000 feet common boarding, 20 pounds

2¼-inch wire nails; 1,000 feet rough boarding, 22 pounds 3-inch wire nails; 1,000 feet square-edge 1-inch flooring, 36 pounds 3-inch wire nails; 1,000 feet square-edge 2-inch flooring, 40 pounds 4-inch wire-nails; 1,000 feet matched flooring, blind-nailed, 31 pounds 3-inch wire-nails; 1,000 feet furring, 1" x 3", 42 pounds 3-inch wire nails; 1,000 feet furring 1" x 2", 60 pounds 3-inch wire-nails; 1,000 feet pine finish, 26 pounds 2½-inch wire-nails; 1,000 feet hardwood finish, 20 pounds 2¼-inch wire-nails; 1,000 feet studding in walls, 10 pounds 3-inch wire-nails; 1,000 feet rafters, clear-beams, 8 pounds 3-inch wire-nails; 1,000 feet common fencing, 12 pounds 3-inch wire-nails; 1,000 feet pantry fittings, shelves, hooks, strips, and similar work, about 5 pounds 2-inch wire-nails. These figures are very nearly correct, sufficiently to so answer the purpose of the estimator. Of course, if the sizes of the nails are changed—larger or smaller—the figure must be changed to suit.

### DATE OF PUBLICATION.

Architects, Engineers, Municipal Authorities and others are reminded that the CONTRACT RECORD is printed every Tuesday afternoon, and that advertisements should reach the office of publication not later than 2 o'clock p.m. on that day to ensure insertion in the issue of the current week. Advertisements are frequently received too late for insertion, to avoid which special attention is directed to this announcement.

The public has a great deal to remember, and its memory is mighty short. It needs to be constantly reminded of your business. And the man who knew and bought of you yesterday may be dead tomorrow. Meanwhile a youngster who never heard of you is making his first purchase to-day. Don't depend on past prosperity.—Ad Sense.

A cement for repairing granite is made by reducing to an impalpable powder equal parts of black feldspar and marble dust and mixing in powdered gum dammar. Heat the mixture until the gum melts, mix the whole by stirring and then apply to the fractured parts of the granite like putty is used.

From what Mr. George Hill told the American Society of Civil Engineers, it appears that the steel used in a modern fireproof building for offices or residence is from 8 per cent. to 15 per cent. of the total expense. The building, however, he

adds, is worth much less than the lot, and his estimate is that the skeleton represents less than seven and one-half per cent. of the investment. Hence it is argued that the present high price of structural steel offers but little hindrance to new construction.

### DEBENTURES BOUGHT

Municipalities saved all possible trouble by applying to

**G. A. STIMSON & CO.**

Investment Dealers

24 and 26 King St. W.

TORONTO

### Notice to Contractors

WE can save you money on.....  
**Granolithic or Crushed Stone**

of any size, as we have the most complete plant in Canada. You will consult your own interests by getting our prices. We also make a specialty of Slate, Tile Granite and all kinds of Stone. Crusher at Jarvis street wharf.

**THE POWELL GRANITE & MARBLE CO'Y,**  
Phone 3440. Office, 482-484 Yonge St., Toronto

# WATER WORKS PUMPING MACHINERY

We are prepared to equip Municipal or other Water-Works Plants with Pumping Machinery of the latest and most approved designs. We are the largest manufacturers of Steam and Power Pumps in Canada; they are built in all sizes and capacities, and can be implicitly relied upon wherever used. Several excellent second hand pumps in first class condition for water works service on hand at close prices.

SEND FOR CATALOGUE.

**NORTHEY MFG. CO.**  
LIMITED

1075 King Street, Subway,  
TORONTO, CAN.

## THE PHOENIX BRIDGE & IRON WORKS

MANUFACTURERS OF STAY BOLTS AND ALL KINDS OF RIVETS

STEEL AND IRON STRUCTURAL AND ARCHITECTURAL WORK

Beams, Channels, Angles and  
Teas always in stock.

29 to 49 McGill Street,

P.O. Box 893.

MONTREAL

Prices on Application.

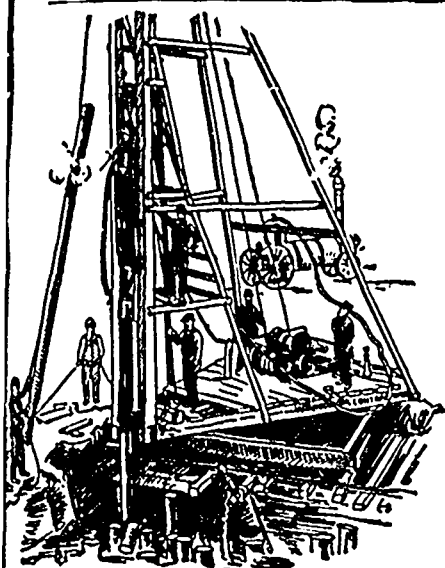
## THE CADWELL SILEX STONE CO'Y

**SILEX STONE** WALKS }  
CURBINGS } A SPECIALTY

TO CORPORATIONS.—Our 20 years' experience in Building Walks and Grading enables us to save the expense of an engineer in small towns where one is not regularly employed.

C. W. CADWELL, Manager  
WINDSOR, ONT.

MUNICIPAL ENGINEERS, CONTRACTORS AND MATERIALS



**PILE DRIVING**

on land or water by Steam Pile Drivers or Drop Hammers.

**Portable Boilers  
Hoisting Engines  
Pumping Machinery  
TO LET**

Bridge Building, Trestle Work, Wharves, Dams, Diving Submarine Work and General Contracting.

**WM. HOOD & SON**  
10 Richmond Sq. - MONTREAL

**Paving Granite**

Granite Sets for Street Paving. — CURBING cut to any shape ordered. — Fine Rich Colors for Building and Monumental Purposes.  
Quarries, St. Phillippe d'Argenteuil, P. Q.

Address all communications to  
**JOS. BRUNET - COTE DES NEIGES, MONTREAL**

**Sicilian  
ROCK ASPHALT**

Rock Asphalt Powder and Rock Asphalt Mastic, for street paving.

Contractors, write us for close prices.

**GEORGE W. REED & CO.**  
873 and 785 Craig Street, - MONTREAL

Please mention the CONTRACT RECORD when corresponding with advertisers.

**ORE AND STONE  
CRUSHERS  
HOISTING MACHINERY  
RAILWAY SUPPLIES  
BOILERS AND ENGINES**  
Prices furnished on application  
**MARSH & HENTHORN,**  
BELLEVILLE, ONT.

**Engineering Contract Company**

Main Office: EMPIRE BUILDING, 71 BROADWAY, NEW YORK  
Canadian Office: TRIVICK BUILDING, TORONTO, ONT.  
HENRY F. DUCK, MANAGER FOR CANADA.

**BRIDGE SUB-STRUCTURES, WATER POWER DAMS, CANAL WORK  
and CAISSON FOUNDATIONS a Specialty.**

**PORTLAND CEMENT**

**Samson Brand Magnet Brand**  
MADE AT SHALLOW LAKE, ONTARIO

Our celebrated SAMSON BRAND has been before the public for many years, and has made hosts of friends among Contractors and Municipal Corporations until it has become one of the leading Cements on the market to day, being excelled by none. This year we have decided to place the MAGNET on the market, and respectfully ask consumers to give it a trial. It will, we think, do its own advertising.

Correspondence invited. . . . .

**GEO. S. KILBOURN, Secretary-Treasurer.**

WORKS: Shallow Lake, Ont. - HEAD OFFICE: Owen Sound, Ont.

**Dominion  
Bridge  
Co., Ltd.**

P. O. Address, MONTREAL, P. Q.  
Works at LACHINE LOCKS, P. Q.

**STEEL BRIDGES**

For Railways and Highways  
Piers, Trestles, Water Towers  
Tanks, Buildings, Roofs, Girders,  
Beams and Columns . . . .

Toronto Agent: **GEO. E. EVANS,**  
38 Canada Life Bldg., TORONTO, ONT

**W. & F. P. CURRIE & CO.**

**MONTREAL**

Importers of

**SEWER PIPES,**

**CHIMNEY TOPS,**

**VENT LININGS,**

**FLUE COVERS,**

**FIRE BRICKS,**

**FIRE CLAY,**

**WHITING.**



**PORTLAND CEMENTS,**

**HIGH GRADE ENGLISH**

**B. S. & Co. "ANCHOR,"**

**ALSO OTHER BRANDS,**

**PLASTER OF PARIS,**

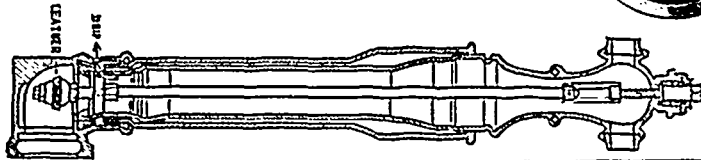
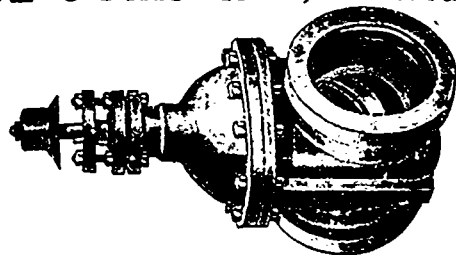
**BORAX,**

**CHINA CLAY.**

**The KERR ENGINE COMPANY, Limited**

OUR goods are recognized as of the first quality by all who have used them. Information and prices given cheerfully upon application.

WALKERVILLE, - ONTARIO



**THE CANADIAN SEWER PIPE CO.**

MANUFACTURERS OF . . .



— FOR —  
**SEWERS,  
CULVERTS  
AND  
WATER PIPES.  
INVERTS**  
For Brick Sewers

Write for Discount  
TORONTO, ONT.

ST. JOHNS, P. Q. HAMILTON, ONT.

# MUNICIPAL DEPARTMENT

## NEW DRAINAGE ACT.

Following are the provisions of the new Drainage Aid Act, passed at the recent session of the Ontario Legislature :

1. This Act shall apply to that portion of the trunk channel constituting the outlet of any drainage work as defined by the Municipal Drainage Act and of any drainage works now constructed or hereafter to be constructed for effecting drainage by embanking, pumping or mechanical means.

2. The provisions of this Act shall be applicable to the construction or reconstruction of any drainage work mentioned in the preceding section thereof.

3. The council of the municipality initiating the construction or reconstruction of any drainage work as above described shall be the applicant for aid to the Lieutenant-Governor of the province of Ontario in any case where assistance is sought.

4. The application shall be by way of petition and shall set forth engineer's report on the proposed work after adoption by the council initiating the work, the assessments upon the lands interested therein or affected thereby, and the cash value of the lands so assessed in parcels as described by the engineer in making his assessment, and such petition shall be verified by the the statutory declaration of the engineer employed by such municipality to make the report, and a field plan of the proposed work shall be furnished with the petition.

5. Should the said report and field plan show that the proposed work was being undertaken for any of the following purposes : (a) To improve that portion of the trunk channel for the outlet for the drainage work ; (b) to furnish capacity over intervening high lands to a natural or other outlet ; (c) to render more effective the operating of a drainage work by embanking, pumping or other mechanical means ; then in every such case the Lieutenant-Governor-in-Council may cause an examination of the drainage work referred to in petition and field plan to be made by engineer of Public Works Department, whose duty it shall be to report fully upon the contemplated work and all matters connected therewith, and upon his report the Lieutenant-Governor-in-Council may assume and pay such proportion of the cost of the undertaking as may seem just and reasonable in the public interest and as may be approved by the Legislative Assembly.

6. This Act may be known as Provincial Drainage Aid Act.

## LEGAL DECISIONS AFFECTING MUNICIPALITIES.

His Honor Judge Hardy has handed out judgment in the case of Cornell vs. Township of Brantford, dismissing the action against the township. The case is of considerable importance to the municipal authorities. It was contended on behalf of the plaintiff that all roads in the township should be kept free from snow during the winter. In the present case the road leading from Brantford to Lynden was drifted full of snow two to eight feet deep for about fifty rods, early in the winter of 1898. Instead of trying to dig this drift out, the council opened up a driveway to the east side of the road. Just after the new year, the plaintiff, in turning off the sideroad to the centre, broke his horse's leg. The action was for \$200, the value of the horse. The Judge holds that the council used proper judgment in opening up a road around the drift instead of

attempting to dig it out. This decision will apply to all country roads.

## REMOVAL NOTICE.

On May 1st the Montreal office of this publication was removed to larger quarters in the Imperial Building, 107 James street. Customers will always find the office open during business hours, and visitors in Montreal are extended a cordial invitation to call at the office, where they will be given every possible assistance and furnished with requisites for answering correspondence. The telephone number is Main 2299.

Mr. Angus Smith, of Ridgetown, Ont., has been appointed city engineer of the city of Stratford, Ont., at a salary of \$800.

Mr. J. E. Vanier, of Montreal, has been re-appointed city surveyor and engineer for the municipality of St. Henri, a suburb of Montreal.

# Portland Cements...

HIGH GRADE GERMAN BRANDS FOR GRANOLITHIC AND ARTIFICIAL STONE SIDEWALKS.

**Sewer Pipes, Best English Cements. Best Belgian Cements. Culvert Pipes, &c. W. McNALLY & CO., Montreal.**

# JOSSON CEMENT .. Manufactured at. NIEL ON RUPELL

Is the Highest Grade Artificial Portland Cement and the Best for High Class Work. Has been used largely for Government and Municipal Works.

TO BE HAD FROM ALL CANADIAN DEALERS

**C. I. de Sola, Manager in Canada :: 180 St. James Street, MONTREAL**



## "BEAVER" PORTLAND CEMENT

A HIGH GRADE PORTLAND CEMENT

Manufactured by . . . . .

THE BEAVER PORTLAND CEMENT CO., LIMITED - WORKS: MARLBANK, ONT

SOLE SALES AGENT :

**COMMERCIAL WOOD & CEMENT COMPANY**

Canada Life Building, Montreal.

Largest Works in Canada.

Write for Prices.

**BELLHOUSE, DILLON & CO., 30 St. Francois Xavier St., Montreal**  
Sole Agents for the Compagnie Generale des Asphaltes de France (Rock Asphalt).

# PORTLAND CEMENT NORTH'S CONDOR

Paving and Fire Brick a Specialty

"DYCKERHOFF" and "WHITE CROSS" Brands

NORTH'S "CONDOR" BRAND AWARDED FIRST PRIZE AND GOLD MEDAL AT THE ANTWERP EXHIBITION

# THE GEORGIAN BAY PORTLAND CEMENT CO. LIMITED

OWEN SOUND, ONT.

These works are furnished with the latest and best machinery. The raw materials are of first-class quality. The process of manufacture is well tried and successful, and operated by experienced experts. The product is the finest grade of PORTLAND CEMENT. For further information write

**J. W. MAITLAND, Sec.-Treas.**

# McGREGOR & McINTYRE STRUCTURAL IRON WORKS

Trolley Pole Brackets; Electric Light Arms; Prison and Jail Cells; Fire Escapes; Automatic Fire Shutters and Doors; Iron Sidewalk Doors, &c. . . . .

We Stock BAR IRON, BAR STEEL, STEEL ANGLES, CHANNELS, Etc. † 65 to 71 Pearl St., TORONTO, ONT.

# MUNICIPAL DEBENTURES BOUGHT

**ÆMILIUS JARVIS & CO. (Toronto Stock Exchange) 19-21 King St. West, TORONTO**

MUNICIPAL ENGINEERS, CONTRACTORS AND MATERIALS

**WILLIS CHIPMAN**

Hon. Grad. McGill University.  
M. Can. Soc. C.E. M. Am. Soc. C.E.  
Mem. Am. W.W. Ass'n.  
WATERWORKS, SEWERAGE WORKS, GAS  
WORKS, ELECTRIC LIGHT AND  
POWER PLANTS  
Reports, Surveys, Construction, Valuations  
103 BAY STREET - TORONTO

**RODERICK J. PARKE**  
*Consulting Electrical Engineer*

MUNICIPAL ELECTRIC LIGHTING  
COMMERCIAL POWER INSTALLATIONS  
Isolated Electric Lighting and Power Plants for  
Manufactories. Estimates, Specifications, Advice  
on Tenders, Valuating.  
409-410 Temple Building, TORONTO, CANADA

**W. T. ASHBRIDGE, C.E.**

A. M. CAN. SOC. C.E.  
609 Temple Building, - TORONTO  
Special Attention given to

**MUNICIPAL IMPROVEMENTS**

Sewerage Works, Water Supply,  
Pavements, Concrete Construction, Etc.

**J. EMILE VANIER**  
**CIVIL AND HYDRAULIC ENGINEER**

(Graduate of the Polytechnic School.)  
**IMPERIAL BUILDING, MONTREAL**  
SPECIALTIES:  
Waterworks, Sewers, both Steam and Hydraulic  
Power Plants, Foundations, Paving, etc.  
Valuations made of Waterworks Systems, Arb  
trations, etc.  
Plans and Estimates for Public Buildings

**R. E. SPEAKMAN, C.E.**

A. M. Inst. C. E., 1878.  
**CONSULTING ENGINEER**  
(LATE GALT & SPEAKMAN.)

Waterworks, Sewerage and Sewage Disposal.  
Municipal Improvements.  
Granolithic Pavements.  
Electric Light Plants.  
Drainage and Irrigation of Land.  
Coal Handling Plant and Machinery.  
Plans, Specifications and Estimates.  
Construction and Valuations.  
Canada Life Building - TORONTO

**CANADA FOUNDRY  
COMPANY, LIMITED**

Successors to { ST. LAWRENCE FOUNDRY CO.  
OF TORONTO, LIMITED.

Architectural Iron { BEAMS, COLUMNS,  
CASTINGS,  
FIRE ESCAPES.

Waterworks Supplies { PIPES,  
SPECIALS,  
HYDRANTS, VALVES.

Railway Supplies { BRAKE SHOES,  
FROGS,  
SWITCHES.

Ornamental Iron { GRILLS,  
FENCES,  
RAILINGS.

General Jobbing

OFFICE AND WORKS:  
262-278 FRONT STREET EAST,  
TORONTO, ONT.

**PORTLAND CEMENT**

For Sidewalks, Pavements, Heavy Masonry and Concrete.

MANUFACTURED BY . . .

Write for Circular  
and Prices.

**The Rathbun Company**  
DESERONTO, ONT.

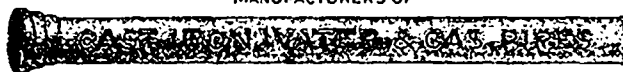
**Montreal Pipe Foundry Co. Ltd.**

SUCCESSORS TO

DRUMMOND, McCALL PIPE FOUNDRY CO. LTD

MANUFACTURERS OF

SPECIAL CASTINGS  
FLANGE PIPE  
BRANCHES  
HYDRANTS  
VALVES  
VALVE BOXES



OFFICES  
CANADA LIFE BUILDING

**MONTREAL**

Cast Iron Water and Gas Pipes, etc.

Londonderry, Nova Scotia

**LONDONDERRY PIPE FOUNDRY**

ALEX. GARTSHORE, President. J. G. ALLAN, Secretary and Treasurer. JAS. THOMSON, Vice-President and General Manager

**THE GARTSHORE-THOMSON PIPE & FOUNDRY CO.  
LIMITED.**

Manufacturers of:::

Flexible and Flange Pipe,  
Special Castings and all kinds of  
Waterworks Supplies.



3 inches to 60 inches diameter.

For Water, Gas, Culvert and Sewer

~~~~~ HAMILTON ONT. ~~~~~



**OAK WOOD STAIN.**

Boil dry carbonate of soda, 80 grams, and pale ocher 250 grams with 2 liters of rainwater for one-half hour; then add 2 more liters of water. Add to this stain 700 grams of a wax mixture, consisting of yellow wax 1 kilo, water 2 liters and potash 70 grams.

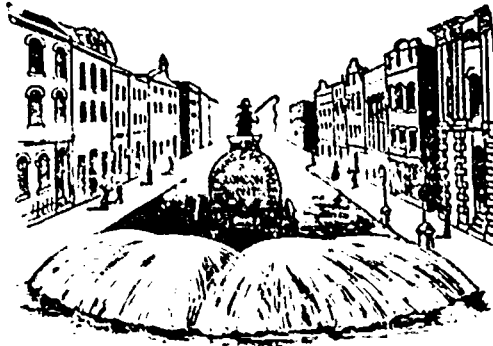
**TO CLOSE UP CRACKS IN BRICK OR STONE WALLS TO KEEP OUT MOISTURE.**

"M. Mc.," Cleveland, O., says that he would be thankful to hear of a means wherewith to stop up successfully some bad cracks in an old stone wall to keep out moisture. He tried various kinds of mortar, and also cement, without success. The mortar or cement would invariably shrink and crumble, eventually falling out again, the wall in question being severely exposed.

ANSWER.—You have, no doubt, in your shop some paint skins or the remnants of linseed oil paint from paint pots. Take the oiliest or softest of this and run them through a paint mill or strainer. Fine grinding or straining is not required. If not thin enough for a mixed paint, add the foots of your oil tank or oil barrel until you have such consistency. Now work in enough of dry common whiting to make the mass about as stiff as a glazing putty, then add to it enough good Portland cement to enable you to handle it without it sticking to your hands. In that condition it may be pressed or worked into cracks in stone or brick walls, and when it has become hard it will be adhesive and will not be penetrated by moisture, and will stand any reasonable degree of heat as well.

**STUDEBAKER SPRINKLER**

(PATENT IMPROVED)



Does not Clog or get out of Order.

Greatest Width of Spray. Can be Graded from Driver's Seat to any Volume.

We also make an . . . .

**Improved Vertical Spray**  
... for Pavements.

Write for Prices and Catalogue to

**Geo. Heaman, Mnfr.**  
LONDON, ONT.

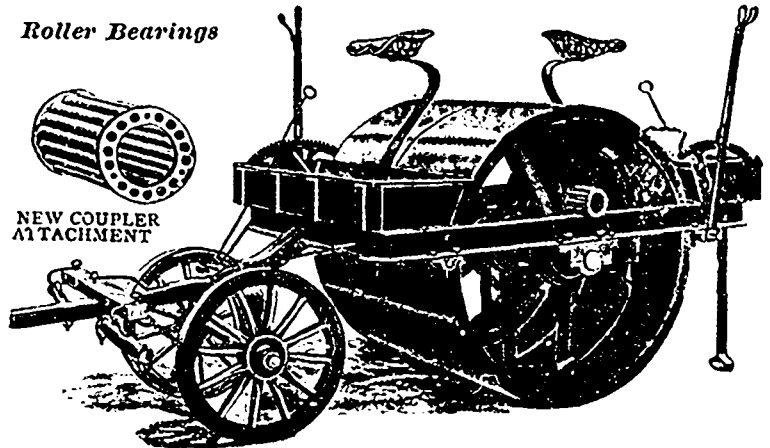
**ROAD MAKING MACHINERY**

Our New Design... **"CHAMPION" HORSE ROAD ROLLER**  
Furnished with either Cast Iron or Steel Drums.

**Roller Bearings**



NEW COUPLER ATTACHMENT



With Roller Bearings and New Patent Coupler Attachment, either 2 1/2, 3 1/2, 4 1/2 or 5 1/2 tons. All one size frame, drum, and width of tread and can be extra weighed 2 tons each. Address for Catalogue

**GOOD ROADS MACHINERY CO.,** John Challen, Mgr. HAMILTON, ONT.

**ARTIFICIAL STONE PAVEMENTS**

SIDEWALKS A SPECIALTY

CORPORATIONS Will do well to consider our work and prices before letting contracts

The Silica Baritic Stone Company of Ontario, Limited.

WALTER MILLS, General Manager. Head office: INGERSOLL, ONT.

**Prices of Building Materials.**

PRESSED BRICK, Per M.

TORONTO PRESSED BRICK AND TERRA COTTA WORKS. F.O.B. F.O.B. Milton, Ont. Montreal.

|                    |         |         |
|--------------------|---------|---------|
| Red No. 1.....     | \$12 50 | \$18 00 |
| " 2.....           | 11 00   | 16 50   |
| " 3.....           | 8 00    | 13 50   |
| Buff No. 1.....    | 14 50   | 20 00   |
| " 2.....           | 13 00   | 18 50   |
| Brown.....         | 20 00   | 25 50   |
| Roman Red.....     | 25 00   | 30 50   |
| " Buff.....        | 28 00   | 33 50   |
| " Brown.....       | 35 00   | 40 50   |
| Hard Building..... | 6 00    | 11 50   |
| " Sewers.....      | 6 00    | 11 50   |

Roofing Tiles, \$20 00 per 1,000, \$23 00 Montreal.

COMMON BRICK, Per M. F.O.B. F.O.B. Toronto. Montreal.

|                     |      |      |      |      |
|---------------------|------|------|------|------|
| Common Walling..... | 7 00 | 8 00 | 7 50 | 8 00 |
| Good Facing.....    | 8 00 | 9 00 | 8 50 | 9 50 |
| Sewer.....          | 8 00 | 9 00 | 8 50 | 9 00 |

**STONE.**

|                                                                                                                                                                                                                                                                                                |       |       |    |      |    |      |    |    |
|------------------------------------------------------------------------------------------------------------------------------------------------------------------------------------------------------------------------------------------------------------------------------------------------|-------|-------|----|------|----|------|----|----|
| Common Rubble, per toise, delivered.....                                                                                                                                                                                                                                                       | 10 10 | 11 00 |    |      |    |      |    |    |
| Large flat Rubble, per toise, delivered.....                                                                                                                                                                                                                                                   | 14 00 | 18 00 |    |      |    |      |    |    |
| Foundation Blocks, per c. ft. Granite (Stanstead) Ashlar, 6 in. to 2 1/2 in., rise on, per ft. Amherst Red Sandstone, Amherst, N.S., per cub. ft. Kent Free stone Quarries, Moncton, N.B., per cu. ft. River John, N. S., brown Freestone, per cu. ft. Port Philip, N. S. Brown Sandstone..... | 30    | 50    | 25 | 1 00 | 75 | 1 00 | 95 | 95 |

|                                                                                                                                                        |       |       |    |
|--------------------------------------------------------------------------------------------------------------------------------------------------------|-------|-------|----|
| "Scoria" Paving Blocks, 8" x 3 1/2" x 5".....                                                                                                          | 55    |       |    |
| "Scoria" Paving Blocks, 8" x 3 1/2" x 4".....                                                                                                          | 45 00 |       |    |
| Masilion.....                                                                                                                                          | 30 00 |       |    |
| Quebec and Vermont rough granite for building purposes, per c. ft. f.o.b. quarry                                                                       | 40    | 1 00  |    |
| For ornamental work, cu. ft. Granite paving blocks, 8 in. x 12 in. x 6 in. x 1/4 in. per M. Granite curbing stone, 6 in. x 20 in. per linear foot..... | 40    | 50 00 | 70 |

|                                                                                         |      |      |    |
|-----------------------------------------------------------------------------------------|------|------|----|
| CREDIT VALLEY STONE. F.O.B. Quarries.                                                   | 7 00 |      |    |
| Rubble, per car of 15 tons... Brown Coursing, up to 10 in., per sup. yard.....          | 1 50 | 1 75 |    |
| Brown Dimension, per cub. ft. Grey Coursing, per sup. yard Grey Dimension, per cub. ft. | 60   | 1 00 | 45 |

|                                                                                                 |      |      |    |
|-------------------------------------------------------------------------------------------------|------|------|----|
| LONGFORD STONE. Rubble, per 30 M. car..... Ashlar, per cub. yd..... Dimension, per cub. ft..... | 5 00 | 2 00 | 18 |
|-------------------------------------------------------------------------------------------------|------|------|----|

|                                                                      |       |       |       |       |      |      |
|----------------------------------------------------------------------|-------|-------|-------|-------|------|------|
| SLATE. Toronto. Montreal.                                            |       |       |       |       |      |      |
| Roofing (# square) red..... purple..... adding green..... black..... | 17 50 | 20 00 | 8 50  | 10 00 | 7 00 | 8 00 |
| Terra Cotta Tile, per sq. Ornamental Black Slate Roofing             | 7 50  | 6 50  | 20 00 | 25 00 | 8 80 | 6 80 |

|                                                                                                                                                                                                                                                                                                                                                                                                                                                                                                  |      |      |      |      |      |      |      |      |      |      |      |      |      |      |      |      |      |      |      |      |      |      |      |      |      |      |      |      |      |       |      |      |      |      |      |      |      |      |      |      |      |      |      |      |      |      |      |      |      |      |      |      |      |      |
|--------------------------------------------------------------------------------------------------------------------------------------------------------------------------------------------------------------------------------------------------------------------------------------------------------------------------------------------------------------------------------------------------------------------------------------------------------------------------------------------------|------|------|------|------|------|------|------|------|------|------|------|------|------|------|------|------|------|------|------|------|------|------|------|------|------|------|------|------|------|-------|------|------|------|------|------|------|------|------|------|------|------|------|------|------|------|------|------|------|------|------|------|------|------|------|
| CEMENT, LIME, etc. Portland Cements— German per M..... London "..... Newcas le "..... "Josson" Brand Portland "Dyckebelt "North's Condor English, artificial, per bbl. Belgian, natural, per bbl. Canadian, artificial, " Roman Parian Keene Superfine "Whites", Keene's Coarse "Whites", "Karlstadt" (German) "Germania" (German) "Rooster" (Belgian) "Keystone" (Belgian) "Anvil" (Belgian) "Burham" (English) Hydraulic Cements— Thorold, per bbl. Queenston, " Napanee, " Hull, " Ontario, " | 2 90 | 3 10 | 2 55 | 2 65 | 2 95 | 3 00 | 2 25 | 2 45 | 1 95 | 2 10 | 2 70 | 2 80 | 3 05 | 3 25 | 2 75 | 2 90 | 2 35 | 2 80 | 2 35 | 2 45 | 2 00 | 2 20 | 2 60 | 2 70 | 2 20 | 2 25 | 5 75 | 5 75 | 0 10 | 10 00 | 8 50 | 9 00 | 3 05 | 3 25 | 2 75 | 2 90 | 2 75 | 2 90 | 2 05 | 2 20 | 1 95 | 2 05 | 2 25 | 2 45 | 2 50 | 1 60 | 2 50 | 1 50 | 2 60 | 1 50 | 1 50 | 2 50 | 1 50 | 1 25 |
|--------------------------------------------------------------------------------------------------------------------------------------------------------------------------------------------------------------------------------------------------------------------------------------------------------------------------------------------------------------------------------------------------------------------------------------------------------------------------------------------------|------|------|------|------|------|------|------|------|------|------|------|------|------|------|------|------|------|------|------|------|------|------|------|------|------|------|------|------|------|-------|------|------|------|------|------|------|------|------|------|------|------|------|------|------|------|------|------|------|------|------|------|------|------|------|

|                                |       |       |       |       |
|--------------------------------|-------|-------|-------|-------|
| Fire Bricks, Newcastle, per M  | 30 00 | 35 00 | 16 00 | 21 00 |
| Scotch " "                     | 30 00 | 35 00 | 19 00 | 21 00 |
| Lime, 100 lbs., Grey.....      | 30    |       |       |       |
| " " White.....                 | 35    |       | 30    |       |
| Plaster, Calcined, N. B.....   | 2 00  |       | 1 50  |       |
| " " N. S.....                  | 2 00  |       | 1 50  |       |
| Hair, Plasterers', per bag.... | 50    | 1 00  |       | 000   |

**HARDWARE.**

The following are the quotations to builders for nails at Toronto and Montreal:

|                               |      |      |
|-------------------------------|------|------|
| Cut nails, 50d & 60d, per keg | 2 85 | 2 85 |
| Steel " " "                   | 2 95 | 2 95 |

**CUT NAILS, FENCE AND CUT SPIKES.**

|                                |      |      |
|--------------------------------|------|------|
| 4od, hot cut, per 100 lbs..... | 2 85 | 2 85 |
| 10 to 12d, hot cut.....        | 2 95 | 2 95 |
| 3d, 9d, " " "                  | 3 00 | 3 00 |
| 6d, 7d, " " "                  | 3 15 | 3 15 |
| 4d to 5d, " " "                | 3 25 | 3 25 |
| 3d, " " "                      | 3 50 | 3 50 |
| 2d, " " "                      | 3 85 | 3 85 |

Cut spikes, 10 cents per keg advance. Steel Nails, 10c. per keg extra. Wire nails, 3-35 base price.

**Iron Pipe:**

|                                        |        |
|----------------------------------------|--------|
| Iron pipe, 3/4 inch, per 100 feet..... | \$3.05 |
| " " 1/2 " " " "                        | 3.75   |
| " " 3/4 " " " "                        | 4.25   |
| " " 1 " " " "                          | 5.75   |
| " " 1 1/2 " " " "                      | 1.00   |
| " " 2 " " " "                          | 9.50   |
| " " 2 1/2 " " " "                      | 13.00  |

**Lead Pipe:**

|                         |          |               |
|-------------------------|----------|---------------|
| Lead pipe, per lb.....  | 7c.      | 15 cent. dis. |
| Waste pipe, per lb..... | 7 1/2 c. |               |

**Galvanized Iron:**

|                                                                            |          |          |
|----------------------------------------------------------------------------|----------|----------|
| Adam's—Mar's Best and Queen's Head and Opello: 16 to 24 gauge, per lb..... | 4 1/2 c. | 4 1/2 c. |
| 26 gauge, " " "                                                            | 4 1/2 c. | 4 1/2 c. |
| 28 " " "                                                                   | 5        | 5 1/2    |
| Gordon Crown— 16 to 24 gauge, per lb.....                                  | 4 1/2 c. | 4 1/2 c. |
| 26 gauge, " " "                                                            | 4 1/2 c. | 4 1/2 c. |
| 28 " " "                                                                   | 4 1/2 c. | 4 1/2 c. |

Note.—Cheaper grades about 1/2 c. per lb. less.

**Structural Iron:**

|                                 |      |      |
|---------------------------------|------|------|
| Steel Beams, per 100 lbs.....   | 2 75 | 2 10 |
| " channels, " " "               | 2 85 | 2 35 |
| " angles, " " "                 | 2 50 | 2 60 |
| " tees, " " "                   | 2 80 | 2 60 |
| " plates, " " "                 | 2 55 | 2 00 |
| Sheared steel bridge plate..... | 1 25 | 1 35 |