

**CIHM  
Microfiche  
Series  
(Monographs)**

**ICMH  
Collection de  
microfiches  
(monographies)**



**Canadian Institute for Historical Microreproductions / Institut canadien de microreproductions historiques**

**© 1997**

# Technical and Bibliographic Notes / Notes techniques et bibliographiques

The Institute has attempted to obtain the best original copy available for filming. Features of this copy which may be bibliographically unique, which may alter any of the images in the reproduction, or which may significantly change the usual method of filming are checked below.

L'Institut a microfilmé le meilleur exemplaire qu'il lui a été possible de se procurer. Les détails de cet exemplaire qui sont peut-être uniques du point de vue bibliographique, qui peuvent modifier une image reproduite, ou qui peuvent exiger une modification dans la méthode normale de filmage sont indiqués ci-dessous.

- Coloured covers / Couverture de couleur
- Covers damaged / Couverture endommagée
- Covers restored and/or laminated / Couverture restaurée et/ou pelliculée
- Cover title missing / Le titre de couverture manque
- Coloured maps / Cartes géographiques en couleur
- Coloured Ink (i.e. other than blue or black) / Encre de couleur (i.e. autre que bleue ou noire)
- Coloured plates and/or illustrations / Planches et/ou illustrations en couleur
- Bound with other material / Relié avec d'autres documents
- Only edition available / Seule édition disponible
- Tight binding may cause shadows or distortion along interior margin / La reliure serrée peut causer de l'ombre ou de la distorsion le long de la marge intérieure.
- Blank leaves added during restorations may appear within the text. Whenever possible, these have been omitted from filming / Il se peut que certaines pages blanches ajoutées lors d'une restauration apparaissent dans le texte, mais, lorsque ce n'était possible, ces pages n'ont pas été filmées.
- Additional comments / Commentaires supplémentaires:

- Coloured pages / Pages de couleur
- Pages damaged / Pages endommagées
- Pages restored and/or laminated / Pages restaurées et/ou pelliculées
- Pages discoloured, stained or foxed / Pages décolorées, tachetées ou piquées
- Pages detached / Pages détachées
- Showthrough / Transparence
- Quality of print varies / Qualité Inégale de l'impression
- Includes supplementary material / Comprend du matériel supplémentaire
- Pages wholly or partially obscured by errata slips, tissues, etc., have been refilmed to ensure the best possible image / Les pages totalement ou partiellement obscurcies par un feuillet d'errata, une pelure, etc., ont été filmées à nouveau de façon à obtenir la meilleure image possible.
- Opposing pages with varying colouration or discolourations are filmed twice to ensure the best possible image / Les pages s'opposant ayant des colorations variables ou des décolorations sont filmées deux fois afin d'obtenir la meilleure image possible.

This item is filmed at the reduction ratio checked below / Ce document est filmé au taux de réduction indiqué ci-dessous.

10x		14x		18x		22x		26x		30x
<input type="checkbox"/>	<input type="checkbox"/>	<input type="checkbox"/>	<input type="checkbox"/>	<input type="checkbox"/>	<input type="checkbox"/>	<input type="checkbox"/>	<input checked="" type="checkbox"/>	<input type="checkbox"/>	<input type="checkbox"/>	<input type="checkbox"/>
	12x		16x		20x		24x		28x	32x

The copy filmed here has been reproduced thanks to the generosity of:

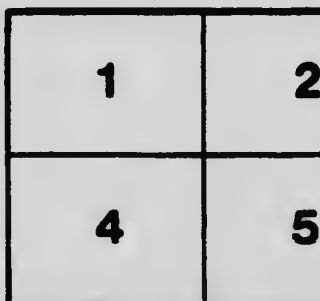
Bibliothèque scientifique,  
Université Laval,  
Québec, Québec.

The images appearing here are the best quality possible considering the condition and legibility of the original copy and in keeping with the filming contract specifications.

Original copies in printed paper covers are filmed beginning with the front cover and ending on the last page with a printed or illustrated impression, or the back cover when appropriate. All other original copies are filmed beginning on the first page with a printed or illustrated impression, and ending on the last page with a printed or illustrated impression.

The last recorded frame on each microfiche shall contain the symbol  $\rightarrow$  (meaning "CONTINUED"), or the symbol  $\nabla$  (meaning "END"), whichever applies.

Maps, plates, charts, etc., may be filmed at different reduction ratios. Those too large to be entirely included in one exposure are filmed beginning in the upper left hand corner, left to right and top to bottom, as many frames as required. The following diagrams illustrate the method:



L'exemplaire filmé fut reproduit grâce à la générosité de:

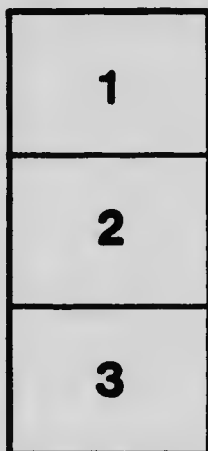
Bibliothèque scientifique,  
Université Laval,  
Québec, Québec.

Les images suivantes ont été reproduites avec le plus grand soin, compte tenu de la condition et de la netteté de l'exemplaire filmé, et en conformité avec les conditions du contrat de filmage.

Les exemplaires originaux dont la couverture en papier est imprimée sont filmés en commençant par le premier plat et en terminant soit par la dernière page qui comporte une empreinte d'impression ou d'illustration, soit par le second plat, selon le cas. Tous les autres exemplaires originaux sont filmés en commençant par la première page qui comporte une empreinte d'impression ou d'illustration et en terminant par la dernière page qui comporte une telle empreinte.

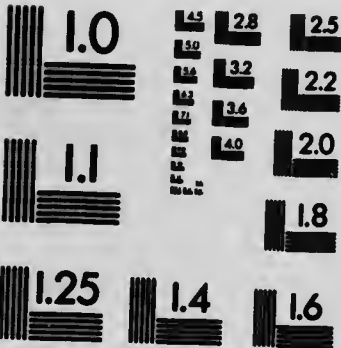
Un des symboles suivants apparaît sur la dernière image de chaque microfiche, selon le cas: le symbole  $\rightarrow$  signifie "A SUIVRE", le symbole  $\nabla$  signifie "FIN".

Les cartes, planches, tableaux, etc., peuvent être filmés à des taux de réduction différents. Lorsque le document est trop grand pour être reproduit en un seul cliché, il est filmé à partir de l'angle supérieur gauche, de gauche à droite, et de haut en bas, en prenant le nombre d'images nécessaire. Les diagrammes suivants illustrent la méthode.



MICROCOPY RESOLUTION TEST CHART

(ANSI and ISO TEST CHART No. 2)



**APPLIED IMAGE Inc**

1653 East Main Street  
Rochester, New York 14609 USA  
(716) 482 - 0300 - Phone  
(716) 288 - 5989 - Fax

DEPARTMENT OF AGRICULTURE,  
OFFICE OF THE DAIRY COMMISSIONER.

## THE BRANDING OF DAIRY BUTTER

*The Dairy Industry Act, 1914*, is largely a revision of Part VIII of the Inspection and Sale Act, which Part it repeals.

The underlying principle of the law is protection to the consumer, the honest manufacturer and the honest trader. The whole object of the law is to prevent misrepresentation. No reasonable practice is interfered with.

A new subsection in the *Act* deals with the weight of butter as put up in prints or blocks. This subsection reads as follows:—

“No person shall sell, offer, or have in his possession for sale, any butter moulded or cut into prints, blocks, squares or pats, unless such prints, blocks, squares or pats are of the full net weight of one-quarter pound, one-half pound, one pound or two pounds at the time they are moulded or cut. Nothing in this paragraph shall be held to apply to butter in rolls or lumps of indeterminate weight as sold by farmers.”

The Regulations made under the authority of the *Act* came into force on September 1st, and provide that when dairy butter is put up in blocks, squares or prints and wrapped in parchment paper the paper shall be printed or branded with the words “Dairy Butter,” in letters at least one-quarter inch square, in addition to any other wording that the buttermaker may desire to use. There is nothing in the Act or Regulations to prevent the use of the word “Separator” in addition to the words “Dairy Butter,” but no such grade of butter as “Separator” is recognized by the law. The Butter Act of 1903 defined only two grades, namely, “Dairy” and “Creamery.” The Dairy Industry Act of 1914 defines a third grade as “Whey” butter. Buttermakers may use any form of printing or branding, including the words “Dairy Butter,” which is not inconsistent with the definition of dairy butter. Butter in rolls, crocks or tubs is not required to be branded.

The definition of dairy butter is found in section 3 of the Act and is the same as it was in *The Butter Act* of 1903. It reads as follows:—

(d) “dairy” means a place where the milk or cream of less than fifty cows is manufactured into butter;

(e) “dairy butter” means butter which is manufactured in a dairy.

The exact wording of the sections of the Regulations that deal with this matter of the branding of dairy butter reads as follows:—

"No person shall cut or pack dairy butter into blocks, squares or prints and wrap such blocks, squares or prints in parchment paper unless the said parchment paper is printed or branded with the words "dairy butter."

"No person shall knowingly sell, offer, expose or have in his possession for sale:—

(e) Any dairy butter packed in boxes similar to those used for the packing of creamery butter unless such packages are branded "Dairy butter;"

(f) Any dairy butter packed, moulded or cut into blocks, squares or prints and wrapped in parchment paper unless such parchment paper is branded "Dairy butter;"

We would suggest the following forms as suitable for the printing of dairy butter wrappers:

**CHOICE DAIRY BUTTER**

Made By

Mrs. John Doe,  
Rose Bank Farm, Doeville,  
Ontario.

or

**CHOICE DAIRY BUTTER**

Made from Separator Cream

By

Mrs. John Doe,  
Rose Bank Farm, Doeville,  
Ontario.

The full text of "The Dairy Industry Act, 1914," and the Regulations made thereunder are published as Bulletin No. 42, Dairy and Cold Storage Series, which may be obtained upon application to the undersigned or to the Publications Branch, Department of Agriculture, Ottawa.

J. A. RUDDICK,

*Dairy and Cold Storage Commissioner.*

OTTAWA, October 26th, 1914.

