

**CIHM
Microfiche
Series
(Monographs)**

**ICMH
Collection de
microfiches
(monographies)**



Canadian Institute for Historical Microreproductions / Institut canadien de microreproductions historiques

© 1995

Technical and Bibliographic Notes / Notes techniques et bibliographiques

The Institute has attempted to obtain the best original copy available for filming. Features of this copy which may be bibliographically unique, which may alter any of the images in the reproduction, or which may significantly change the usual method of filming, are checked below.

- ☒ Coloured covers/
Couverture de couleur
- ☐ Covers damaged/
Couverture endommagée
- ☐ Covers restored and/or laminated/
Couverture restaurée et/ou pelliculée
- ☐ Cover title missing/
Le titre de couverture manque
- ☐ Coloured maps/
Cartes géographiques en couleur
- ☒ Coloured ink (i.e. other than blue or black)/
Encre de couleur (i.e. autre que bleue ou noire)
- ☐ Coloured plates and/or illustrations/
Planches et/ou illustrations en couleur
- ☐ Bound with other material/
Relié avec d'autres documents
- ☐ Tight binding may cause shadows or distortion
along interior margin/
Le reliure serrée peut causer de l'ombre ou de la
distorsion le long de la marge intérieure
- ☐ Blank leaves added during restoration may appear
within the text. Whenever possible, these have
been omitted from filming/
Il se peut que certaines pages blanches ajoutées
lors d'une restauration apparaissent dans le texte,
mais, lorsque cela était possible, ces pages n'ont
pas été filmées.

☐ Additional comments: /
Commentaires supplémentaires:

This item is filmed at the reduction ratio checked below/
Ce document est filmé au taux de réduction indiqué ci-dessous.

10X	14X	18X	22X	26X	30X
<input type="checkbox"/>	<input type="checkbox"/>	<input checked="" type="checkbox"/>	<input type="checkbox"/>	<input type="checkbox"/>	<input type="checkbox"/>
12X	16X	20X	24X	28X	32X

L'Institut a microfilmé le meilleur exemplaire qu'il lui a été possible de se procurer. Les détails de cet exemplaire qui sont peut-être uniques du point de vue bibliographique, qui peuvent modifier une image reproduite, ou qui peuvent exiger une modification dans la méthode normale de filmage sont indiqués ci-dessous.

- ☐ Coloured pages/
Pages de couleur
 - ☐ Pages damaged/
Pages endommagées
 - ☐ Pages restored and/or laminated/
Pages restaurées et/ou pelliculées
 - ☒ Pages discoloured, stained or foxed/
Pages décolorées, tachetées ou piquées
 - ☐ Pages detached/
Pages détachées
 - ☒ Showthrough/
Transparence
 - ☐ Quality of print varies/
Qualité inégale de l'impression
 - ☐ Continuous pagination/
Pagination continue
 - ☐ Includes index(es)/
Comprend un (des) index
- Title on header taken from: /
Le titre de l'en-tête provient:
- ☐ Title page of issue/
Page de titre de la livraison
 - ☐ Caption of issue/
Titre de départ de la livraison
 - ☐ Masthead/
Générique (périodiques) de la livraison

The copy filmed here has been reproduced thanks to the generosity of:

Douglas Library
Queen's University

The images appearing here are the best quality possible considering the condition and legibility of the original copy and in keeping with the filming contract specifications.

Original copies in printed paper covers are filmed beginning with the front cover and ending on the last page with a printed or illustrated impression, or the back cover when appropriate. All other original copies are filmed beginning on the first page with a printed or illustrated impression, and ending on the last page with a printed or illustrated impression.

The last recorded frame on each microfiche shell contains the symbol \rightarrow (meaning "CONTINUED"), or the symbol ∇ (meaning "END"), whichever applies.

Maps, plates, charts, etc., may be filmed at different reduction ratios. Those too large to be entirely included in one exposure are filmed beginning in the upper left hand corner, left to right and top to bottom, as many frames as required. The following diagrams illustrate the method:

1	2	3
---	---	---

1	2
4	5

L'exemplaire filmé fut reproduit grâce à la
générosité de:

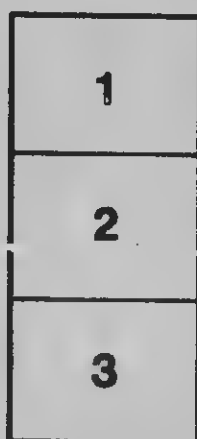
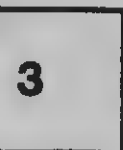
Douglas Library
Queen's University

Les images suivantes ont été reproduites avec le
plus grand soin, compte tenu de la condition et
de la netteté de l'exemplaire filmé, et en
conformité avec les conditions du contrat de
filmage.

Les exemplaires originaux dont la couverture en
papier est imprimée sont filmés en commençant
par le premier plat et en terminent soit par la
dernière page qui comporte une empreinte
d'impression ou d'illustration, soit par le second
plat, selon le cas. Tous les autres exemplaires
originaux sont filmés en commençant par la
première page qui comporte une empreinte
d'impression ou d'illustration et en terminent par
la dernière page qui comporte une telle
empreinte.

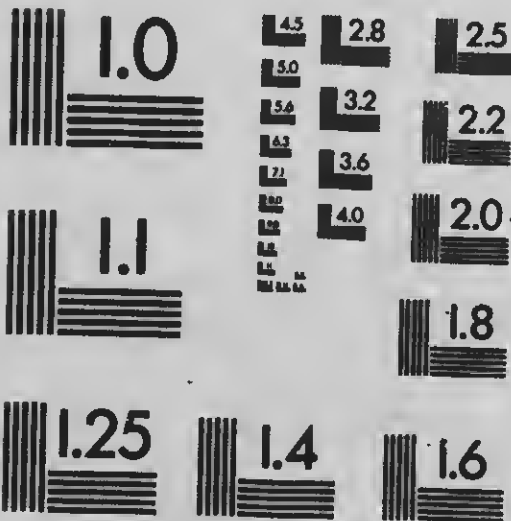
Un des symboles suivants apparaît sur la
dernière image de chaque microfiche, selon le
cas: le symbole \rightarrow signifie "A SUIVRE", le
symbole ∇ signifie "FIN".

Les cartes, planches, tableaux, etc., peuvent être
filmés à des taux de réduction différents.
Lorsque le document est trop grand pour être
reproduit en un seul cliché, il est filmé à partir
de l'angle supérieur gauche, de gauche à droite,
et de haut en bas, en prenant le nombre
d'images nécessaire. Les diagrammes suivants
illustrent la méthode.



MICROCOPY RESOLUTION TEST CHART

(ANSI and ISO TEST CHART No. 2)



APPLIED IMAGE Inc

1653 East Main Street
Rochester, New York 14609 USA
(716) 482 - 0300 - Phone
(716) 288 - 5969 - Fax

TANK DEVELOPMENT

The Modern Way

CANADIAN KODAK CO., Limited
Office and Factories 582-592 King St. West
TORONTO, CANADA

3-24-11

1976

4-11-1944

Time and Temperature The Foundation. The time and temperature method of development—developing for a definite time, with a given strength of developer, and at a given temperature—the foundation of the tank system of development, has long since passed the experimental stage. Tank development is no longer a mere theory—it is a success.

The time and temperature method of development—developing for a definite time, with a given strength

of developer, and at a given temperature—the foundation of the tank system of development, has long since passed the experimental stage.

Tank development is no longer a mere theory—it is a success.

Better Results. There is every reason for the adoption of this simple method for the development of film or plates. First and foremost, it affords better results than the old tentative dark-room method, even in the hands of the expert.

There is every reason for the adoption of this simple method for the develop-

ment of film or plates. First and foremost, it affords better results than the old tentative dark-room method, even in the hands of the expert.

Prevention and Protection. The tank prevents accidents, such as light fog or scratches; it protects the novice from his inexperience—the experience is in the tank.

The tank prevents accidents, such as light fog or scratches; it protects the

novice from his inexperience—the experience is in the tank.

Latitude of Exposures. Tank development takes care of all differences of exposure within reasonable bounds. Indeed, it has now been fully demonstrated that normal development, such as the tank gives, produces better printing negatives than does the old method of endeavoring to force under-exposures and restrain over-expos-

Tank development takes care of all differences of exposure within reasonable

bounds. Indeed, it has now been fully demonstrated that normal development, such as the tank gives, produces better printing negatives than does the old method of endeavoring to force under-exposures and restrain over-expos-

1976
ures. Snap shots and time exposures go into the tank at the same time and come out together, developed to their full values. No individual treatment is necessary.

**Convenience
and Comfort.**

Tank development offers both convenience and comfort. With cartridge film it is daylight all the way, and with plates and Premo Film Pack the dark-room is necessary only while loading the tank, and for washing before fixing—operations requiring but a few moments.

Economy.

Tank development is the most economical method of development—time saving, as you may develop a dozen plates, or a full roll of film, at one time; film and plate saving, as it insures the highest percentage of good printing negatives; space saving, as any one of the tanks for either film or plates will occupy but a corner of an ordinary suit case.

**Adopted
by Professional
Photographers.**

The fact that many of the most noted professional photographers in the country have adopted the Eastman Plate Tank for their developing is one of the best evidences of the superiority of the tank system. To these men the convenience of tank development is a secondary consideration. What their business depends upon is results, and they find by actual experience that tank development produces a better quality of results than does the old method.



THE KODAK FILM TANK.

**All by
Daylight.**

With the Kodak Film Tank every step may be performed in full daylight, and the entire operation is so simple as to be readily understood by the merest novice.

The film, after exposure, is protected from light by being first wound up with a light proof apron, after which it is removed from the winding box and placed in a cup of developer, where it remains until development is complete.

As shown in the accompanying cut, apron, black paper, and film are wound on axle D, and, when so wound, are removed from the box and placed in the Solution Cup in the light of an ordinary room. Development is allowed to go on for twenty minutes and the film requires no attention during that time beyond turning the cup containing the film end for end two or three times during development, a tightly-fitting cover for the cup being provided for this purpose. (In case of the Brownie Film Tank,

the film roll itself is turned, no cover for the cup being necessary). When development is completed the film is removed for fixing.



Box for winding protecting apron and film together.

**Develop a
number of rolls
at once.**

With the Kodak Film Tank, the amateur can develop a number of rolls of film at once by merely providing himself with extra tanks, aprons, and reels, which will be found listed (Duplicating Outfits) in the price list.

**Outfit Self
Contained.**

The Winding Boxes themselves are strongly made with metal parts nickered. The Tank is of brass, heavily nickered. Both handles of the box are removable, and, together with the tank and apron, can be packed inside of the box, thus making the entire outfit self-contained.

THE PRICE.

Brownie Kodak Film Tank. For use with No. 1, No. 2, and No. 2 Folding Pocket Brownie Cartridges, complete, -	\$2.50
3½ inch Kodak Film Tank. For use with all Kodak or Brownie Cartridges having a film width of 3½ inches, or less, complete, -	5.00
5 inch Kodak Film Tank. For use with all Kodak and Brownie Cartridges having a film width of 5 inches, or less, complete, -	6.00
7 inch Kodak Film Tank. For use with No. 5 Cartridge Kodak, or shorter film cartridges, complete, -	7.50

Duplicating Outfits.

Consisting of one Solution Cup, one Transferring Reel, and one Apron.

Duplicating Outfit for Brownie Kodak Film Tank, -	\$1.25
Duplicating Outfit for 3½ inch Kodak Film Tank, -	2.50
Duplicating Outfit for 5 inch Kodak Film Tank, -	3.00
Duplicating Outfit for 7 inch Kodak Film Tank, -	3.75

Kodak Film Tank Supplies.

All the amateur needs in the line of supplies for the Kodak Film Tanks are Developing Powders, and Kodak Acid Hypo for fixing. The developer powders listed below are accurately prepared and contain only carefully tested chemicals of the best quality.

THE PRICE.

Kodak Tank Developer Powders, Brownie, per package of ½ dozen, -	\$.15
Ditto, for 3½ inch Tank, per package ½ dozen, -	.20
Ditto, for 5 inch Tank, per package ½ dozen, -	.25
Ditto, for 7 inch Tank, per package ½ dozen, -	.25
Kodak Acid Fixing Powder, per ¼ pound package, -	.10
Ditto, per ½ pound package, -	.15
Ditto, per 1 pound package, -	.25



THE No. 2 BROWNIE DEVELOPING BOX.

May be successfully operated by any Boy or Girl.

The No. 2 Brownie Developing Box is a modified form of the Kodak Film Tank, so simple as to be successfully operated by any boy or girl.

The No. 2 Brownie Developing Box is a metal box fifteen inches in length, just long enough to accommodate a roll of No. 1 or No. 2 Brownie film.

To develop, the roll of film is inserted in the spool carrier, and by means of a cord and winding shaft, unrolled and carried around a roller bearing, thus exposing it to the action of the developer.

Before unrolling the film the developer is poured in the box and the cover put in place. The film is unrolled by turning the crank. Then the box is rocked on its standard for six minutes. The developer is poured off and box filled with water to wash out developer, after which film is removed and fixed in daylight.

THE PRICE.

No. 2 Brownie Developing Box, - -	\$1.00
Brownie Developing Box Powders, per package of 6, - - -	.15
Kodak Acid Fixing Powders, ½ pound package, - - -	.15
Ditto, ¼ pound package, - - -	.10



THE PREMO FILM PACK TANK.

Tank Development for Premo Film Pack Users.

The Premo Film Pack Tank is the latest application of the Kodak Tank principle, placing at the service of Premo Film Pack users, that convenience and assurance of best possible results which the tank system of development guarantees.

This tank is composed of but two parts—the tank proper and a metal receiver or cage, for the films.

The cage is strongly constructed of brass and is divided into twelve compartments (in the 5 x 7 size, six), each accommodating one film. As each film is taken from the pack, it is held between the thumb and fingers, slightly bent from top to bottom, and slipped into one of the compartments. When all the compartments are filled, the cage is placed in tank, which has been previously filled with developer, the top replaced and the films left to develop for twenty

minutes. No further attention is necessary, excepting to turn the tank, end for end, several times during the process of development.

At the expiration of the full time, open the tank, take out cage, remove films, place them in a tray of water for a moment, then transfer to the fixing bath.

**Only a Few
Moments in a
Dark Room.**

The operation of removing films from the pack and loading the cage is done, of course, in the dark-room,

but the time taken for this purpose will not exceed two or three minutes.

The Premo Film Pack permits the removal of one or more films for development at any time, and, of course, any less number of films than the tank is designed for, may be developed therein.

An important point here, is the fact that, in the 4 x 5 size, the regular Eastman Plate Tank cage can be used in the No. 2 Film Pack Tank. Thus, a person having a 3¼ x 4¼, 3¼ x 5½, or 4 x 5 Premo Plate camera using the Premo Film Pack Adapter, can develop his films in the tank. And by merely getting an Eastman plate cage and loading block, can develop his plates in the same tank.

THE PRICE.

Premo Film Pack Tank No. 1. For 12 2¼ x 3¼ films,	\$1.25
Premo Film Pack Tank No. 2. For 12 3¼ x 4¼, 3¼ x 5½ or 4 x 5 films,	3.50
No. 3. For 6 5 x 7 films,	4.00
Eastman Plate Cage and Loading Block, 4 x 5, (May be used in No. 2 Film Pack Tank.)	1.75
Premo Tank Powders No. 1, per package of 6,	.20
Premo Tank Powders in packages of 6, per package, No. 2,	.25
In packages of 6, per package, No. 3,	.35
Kodak Acid Fixing Powder, per 1 pound package,	.25

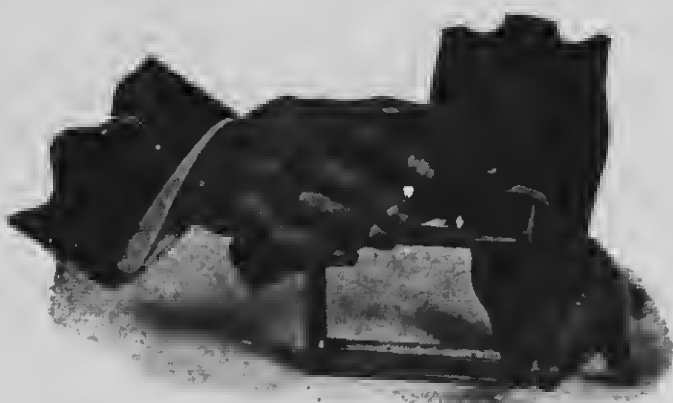


THE EASTMAN PLATE TANK.

**Another
Success.**

The Eastman Plate Tank is the same in theory as the highly successful Kodak Film Tank, with, of course, such modifications as are rendered necessary by the physical difference between plates and film. That equally successful results are produced goes without saying.

The Eastman Plate Tank consists of a metal solution cup, with tightly-fitting cover, a cage for holding twelve plates, or less, during development and fixing, and a simple block for loading the plates into the cage in the dark room. The exposed plates are loaded into cage and placed in the tank in the dark room, and the tank cover fastened in place.



As soon as the plates have been lowered into the developer, the time is noted by watch or clock, and the hand on dial on front of tank set to indicate time when development will be complete. Development is allowed to continue for fifteen minutes, the tank being reversed several times. After development the developer is washed out of the plates, and the plates placed in the fixing bath. Fixing may be carried on in daylight.

THE PRICE.

Eastman Plate Tank, 4 x 5, including Solution Cup, Plate Cage and Loading Block. An adjustable kit, part of the outfit, adapts this Tank for 3¼ x 4¼ or 3¼ x 5½ plates,	- - - - -	\$3.50
Ditto, 5 x 7,	- - - - -	4.50
Kit for 5 x 7, to take 4¼ x 6½, and 4¾ x 6½ plates,	- - - - -	.75
Metal Insert for 5 x 7 to take 4 x 5 plates,	- - - - -	.20
Eastman Plate Tank Developer Powders, for 4 x 5 tank, per package, ½ dozen,	- - - - -	.20
Ditto, for 5 x 7 tank, per package, ½ doz.,	- - - - -	.35
Kodak Acid Fixing Powder, per 1 pound package,	- - - - -	.25

Load Your Kodak With Kodak Film

N NON CURLING **C**
N. C. on the Box
"KODAK" on the
Spool End

THAT'S YOUR PROTECTION







