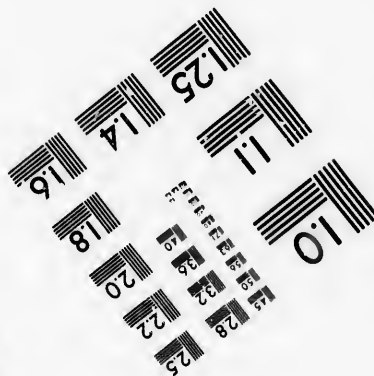
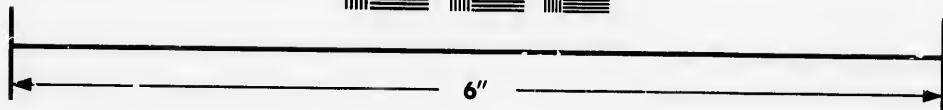
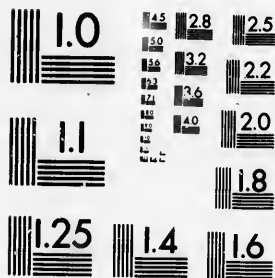


**IMAGE EVALUATION
TEST TARGET (MT-3)**



**Photographic
Sciences
Corporation**

23 WEST MAIN STREET
WEBSTER, N.Y. 14580
(716) 872-4503

**CIHM/ICMH
Microfiche
Series.**

**CIHM/ICMH
Collection de
microfiches.**



Canadian Institute for Historical Microreproductions / Institut canadien de microreproductions historiques

© 1986

Technical and Bibliographic Notes/Notes techniques et bibliographiques

The Institute has attempted to obtain the best original copy available for filming. Features of this copy which may be bibliographically unique, which may alter any of the images in the reproduction, or which may significantly change the usual method of filming, are checked below.

L'Institut a microfilmé le meilleur exemplaire qu'il lui a été possible de se procurer. Les détails de cet exemplaire qui sont peut-être uniques du point de vue bibliographique, qui peuvent modifier une image reproduite, ou qui peuvent exiger une modification dans la méthode normale de filmage sont indiqués ci-dessous.

- | | |
|--|--|
| <input type="checkbox"/> Coloured covers/
Couverture de couleur | <input type="checkbox"/> Coloured pages/
Pages de couleur |
| <input type="checkbox"/> Covers damaged/
Couverture endommagée | <input type="checkbox"/> Pages damaged/
Pages endommagées |
| <input type="checkbox"/> Covers restored and/or laminated/
Couverture restaurée et/ou pelliculée | <input type="checkbox"/> Pages restored and/or laminated/
Pages restaurées et/ou pelliculées |
| <input type="checkbox"/> Cover title missing/
Le titre de couverture manque | <input checked="" type="checkbox"/> Pages discoloured, stained or foxed/
Pages décolorées, tachetées ou piquées |
| <input type="checkbox"/> Coloured maps/
Cartes géographiques en couleur | <input type="checkbox"/> Pages detached/
Pages détachées |
| <input type="checkbox"/> Coloured ink (i.e. other than blue or black)/
Encre de couleur (i.e. autre que bleue ou noire) | <input checked="" type="checkbox"/> Showthrough/
Transparence |
| <input type="checkbox"/> Coloured plates and/or illustrations/
Planches et/ou illustrations en couleur | <input checked="" type="checkbox"/> Quality of print varies/
Qualité inégale de l'impression |
| <input type="checkbox"/> Bound with other material/
Relié avec d'autres documents | <input type="checkbox"/> Includes supplementary material/
Comprend du matériel supplémentaire |
| <input type="checkbox"/> Tight binding may cause shadows or distortion
along interior margin/
La reliure serrée peut causer de l'ombre ou de la
distorsion le long de la marge intérieure | <input type="checkbox"/> Only edition available/
Seule édition disponible |
| <input type="checkbox"/> Blank leaves added during restoration may
appear within the text. Whenever possible, these
have been omitted from filming/
Il se peut que certaines pages blanches ajoutées
lors d'une restauration apparaissent dans le texte,
mais, lorsque cela était possible, ces pages n'ont
pas été filmées. | <input type="checkbox"/> Pages wholly or partially obscured by errata
slips, tissues, etc., have been refilmed to
ensure the best possible image/
Les pages totalement ou partiellement
obscurcies par un feuillet d'errata, une pelure,
etc., ont été filmées à nouveau de façon à
obtenir la meilleure image possible. |
| <input checked="" type="checkbox"/> Additional comments: [Printed ephemera] 1 sheet (verso blank)
Commentaires supplémentaires: | |

This item is filmed at the reduction ratio checked below/
Ce document est filmé au taux de réduction indiqué ci-dessous.

10X	12X	14X	16X	18X	20X	22X	24X	26X	28X	30X	32X
						✓					

The copy filmed here has been reproduced thanks to the generosity of:

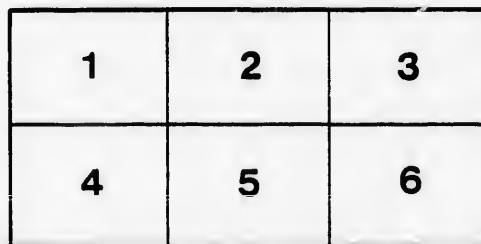
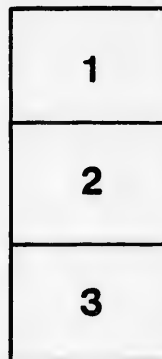
Manuscript Division
Public Archives of Canada

The images appearing here are the best quality possible considering the condition and legibility of the original copy and in keeping with the filming contract specifications.

Original copies in printed paper covers are filmed beginning with the front cover and ending on the last page with a printed or illustrated impression, or the back cover when appropriate. All other original copies are filmed beginning on the first page with a printed or illustrated impression, and ending on the last page with a printed or illustrated impression.

The last recorded frame on each microfiche shall contain the symbol \rightarrow (meaning "CONTINUED"), or the symbol ∇ (meaning "END"), whichever applies.

Maps, plates, charts, etc., may be filmed at different reduction ratios. Those too large to be entirely included in one exposure are filmed beginning in the upper left hand corner, left to right and top to bottom, as many frames as required. The following diagrams illustrate the method:



L'exemplaire filmé fut reproduit grâce à la générosité de:

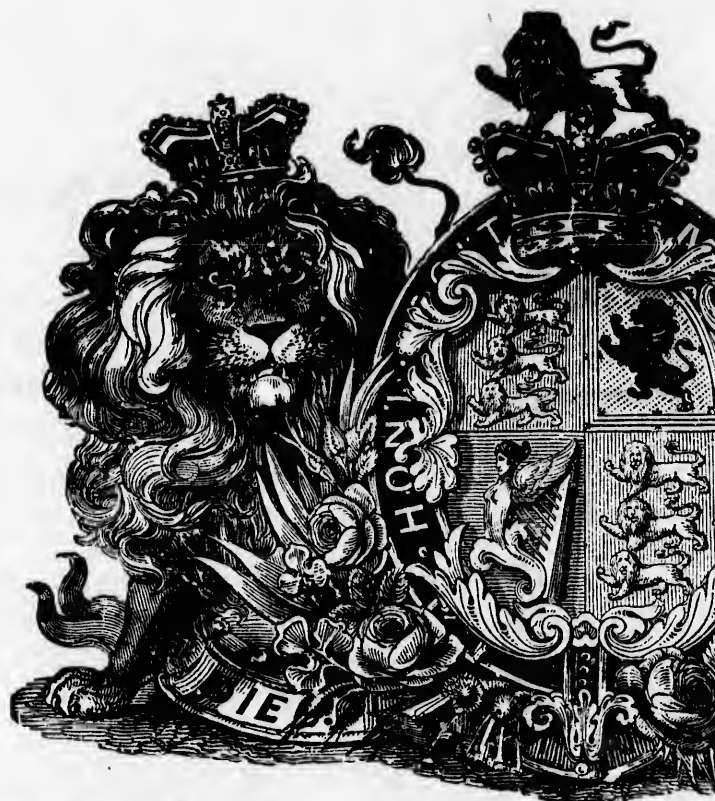
Division des manuscrits
Archives publiques du Canada

Les images suivantes ont été reproduites avec le plus grand soin, compte tenu de la condition et de la netteté de l'exemplaire filmé, et en conformité avec les conditions du contrat de filmage.

Les exemplaires originaux dont la couverture en papier est imprimée sont filmés en commençant par le premier plat et en terminant soit par la dernière page qui comporte une empreinte d'impression ou d'illustration, soit par le second plat, selon le cas. Tous les autres exemplaires originaux sont filmés en commençant par la première page qui comporte une empreinte d'impression ou d'illustration et en terminant par la dernière page qui comporte une telle empreinte.

Un des symboles suivants apparaîtra sur la dernière image de chaque microfiche, selon le cas: le symbole \rightarrow signifie "A SUIVRE", le symbole ∇ signifie "FIN".

Les cartes, planches, tableaux, etc., peuvent être filmés à des taux de réduction différents. Lorsque le document est trop grand pour être reproduit en un seul cliché, il est filmé à partir de l'angle supérieur gauche, de gauche à droite, et de haut en bas, en prenant le nombre d'images nécessaire. Les diagrammes suivants illustrent la méthode.



PROCLAMATION

County of Peterborough, } **PUBLIC**
To Wit. } to the **E**

Peterborough, that in obedience to **E**
directed, and bearing date the Sixteenth
now last past.

312



AMMATION!

PUBLIC NOTICE is hereby given
to the Electors of the County of
ence to Her Majesty's Writ to me
e Sixteenth day of the month of May,

I require the presence of the said
 in the Town of Peterborough, on 1st
 of June, inst., at the hour of 12 o'clock
 electing a person to represent them
 this Province ;---and that in case a
 allowed in the manner by law pr
 opened on **THURSDAY**, the Twent
 June inst., in each of the following
 the said County of Peterborough, vi

- For the Township of Asphodel---in the Town Hall, Norwo
- For the Village of Ashburnham---in the Town Hall, Ashbu
- For the United Townships of Belmont and Methuen---Gar
- For the Township of Douro---in the School House, on Sec
- For the United Townships of Dummer and Burleigh---Tov
- For the Township of Ennismore---School House, Section M
- For the Township of Galway---at or near the place where
- For the Township of Snowden---at School Section No. 5.
- For the United Townships of Minden and Stanhope---at or
 was held.
- For the Township of Monaghan---Town Hall, Monaghan.
- For the Township of Otonabee---Village of Keene.
- For the Town of Peterborough---in the respective Wards,
 Election was held.
- For the United Townships of Smith and Harvey---Town H

Of all which every person is hereby required to take not

Given under my hand at Peterborough, this Second day
 One Thousand Eight Hundred and Sixty-three.

JAM

Peterborough Review Print.

of the said Electors at the Court House,
ugh, on **TUESDAY**, the Sixteenth day
of 12 o'clock, noon, for the purpose of
sent them in the Legislative Assembly of
in case a poll shall be demanded, and
by law prescribed,---such poll will be
the Twenty-fifth day of the month of
following Townships or Municipalities in
orough, viz :---

own Hall, Norwood.

own Hall, Ashburnham.

l Methuen--Garrison's School House.

l House, on Section No. 8.

l Burleigh--Town Hall, Dummer.

House, Section No. 1.

he place where the last Municipal Election was held.

Section No. 5.

Stanhope---at or near the place where the last Municipal Election

all, Monaghan.

f Keene.

pective Wards, at or near the places where the last Municipal

Harvey--Town Hall, Smith,

ired to take notice and to govern himself accordingly.

this Second day of the month of June, in the year of Our Lord
hree.

JAMES

HALL,

Returning Officer.

