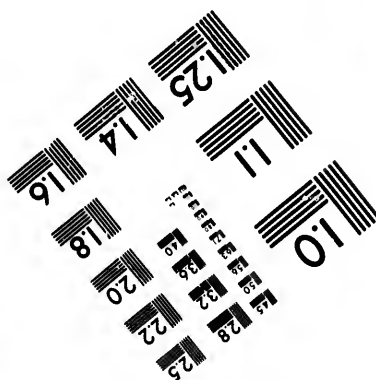
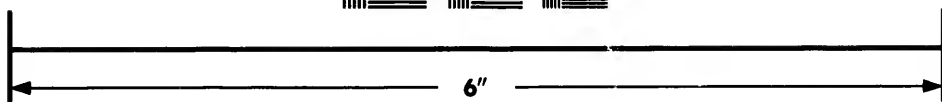
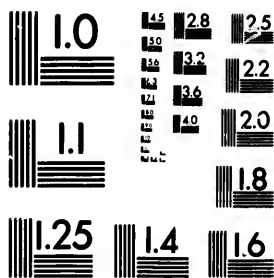


**IMAGE EVALUATION
TEST TARGET (MT-3)**



**Photographic
Sciences
Corporation**

23 WEST MAIN STREET
WEBSTER, N.Y. 14580
(716) 872-4503

1.5 2.8
1.8 3.2
2.2 3.6
2.5 4.0
1.8

**CIHM/ICMH
Microfiche
Series.**

**CIHM/ICMH
Collection de
microfiches.**



Canadian Institute for Historical Microreproductions / Institut canadien de microreproductions historiques

1.5 2.8
1.8 3.2
2.2 3.6
2.5 4.0
1.8

© 1987

Technical and Bibliographic Notes/Notes techniques et bibliographiques

The Institute has attempted to obtain the best original copy available for filming. Features of this copy which may be bibliographically unique, which may alter any of the images in the reproduction, or which may significantly change the usual method of filming, are checked below.

L'Institut a microfilmé le meilleur exemplaire qu'il lui a été possible de se procurer. Les détails de cet exemplaire qui sont peut-être uniques du point de vue bibliographique, qui peuvent modifier une image reproduite, ou qui peuvent exiger une modification dans la méthode normale de filmage sont indiqués ci-dessous.

- | | |
|---|---|
| <input type="checkbox"/> Coloured covers/ Couverture de couleur | <input type="checkbox"/> Coloured pages/ Pages de couleur |
| <input type="checkbox"/> Covers damaged/ Couverture endommagée | <input checked="" type="checkbox"/> Pages damaged/ Pages endommagées |
| <input type="checkbox"/> Covers restored and/or laminated/ Couverture restaurée et/ou pelliculée | <input type="checkbox"/> Pages restored and/or laminated/ Pages restaurées et/ou pelliculées |
| <input type="checkbox"/> Cover title missing/ Le titre de couverture manque | <input checked="" type="checkbox"/> Pages discoloured, stained or foxed/ Pages décolorées, tachetées ou piquées |
| <input type="checkbox"/> Coloured maps/ Cartes géographiques en couleur | <input type="checkbox"/> Pages detached/ Pages détachées |
| <input type="checkbox"/> Coloured ink (i.e. other than blue or black)/ Encre de couleur (i.e. autre que bleue ou noire) | <input checked="" type="checkbox"/> Showthrough/ Transparence |
| <input type="checkbox"/> Coloured plates and/or illustrations/ Planches et/ou illustrations en couleur | <input type="checkbox"/> Quality of print varies/ Qualité inégale de l'impression |
| <input type="checkbox"/> Bound with other material/ Relié avec d'autres documents | <input type="checkbox"/> Includes supplementary material/ Comprend du matériel supplémentaire |
| <input type="checkbox"/> Tight binding may cause shadows or distortion along interior margin/ La reliure serrée peut causer de l'ombre ou de la distorsion le long de la marge intérieure | <input type="checkbox"/> Only edition available/ Seule édition disponible |
| <input type="checkbox"/> Blank leaves added during restoration may appear within the text. Whenever possible, these have been omitted from filming/ Il se peut que certaines pages blanches ajoutées lors d'une restauration apparaissent dans le texte, mais, lorsque cela était possible, ces pages n'ont pas été filmées. | <input type="checkbox"/> Pages wholly or partially obscured by errata slips, tissues, etc., have been refilmed to ensure the best possible image/ Les pages totalement ou partiellement obscurcies par un feuillet d'errata, une pelure, etc., ont été filmées à nouveau de façon à obtenir la meilleure image possible. |
| <input checked="" type="checkbox"/> Additional comments:/ Commentaires supplémentaires: [Printed ephemera] 1 sheet, [10] p. | |

This item is filmed at the reduction ratio checked below/
Ce document est filmé au taux de réduction indiqué ci-dessous.

| | | | | | | | | | | | |
|--------------------------|--------------------------|--------------------------|--------------------------|--------------------------|--------------------------|--------------------------|-------------------------------------|--------------------------|--------------------------|--------------------------|--------------------------|
| 10X | 12X | 14X | 16X | 18X | 20X | 22X | 24X | 26X | 28X | 30X | 32X |
| <input type="checkbox"/> | <input type="checkbox"/> | <input type="checkbox"/> | <input type="checkbox"/> | <input type="checkbox"/> | <input type="checkbox"/> | <input type="checkbox"/> | <input checked="" type="checkbox"/> | <input type="checkbox"/> | <input type="checkbox"/> | <input type="checkbox"/> | <input type="checkbox"/> |

The copy filmed here has been reproduced thanks to the generosity of:

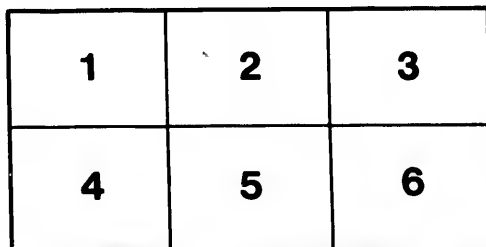
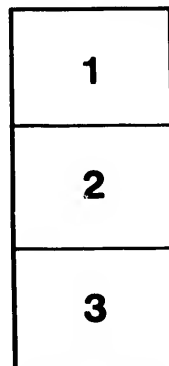
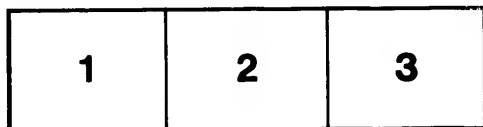
Metropolitan Toronto Library
Canadian History Department

The images appearing here are the best quality possible considering the condition and legibility of the original copy and in keeping with the filming contract specifications.

Original copies in printed paper covers are filmed beginning with the front cover and ending on the last page with a printed or illustrated impression, or the back cover when appropriate. All other original copies are filmed beginning on the first page with a printed or illustrated impression, and ending on the last page with a printed or illustrated impression.

The last recorded frame on each microfiche shall contain the symbol \rightarrow (meaning "CONTINUED"), or the symbol ∇ (meaning "END"), whichever applies.

Maps, plates, charts, etc., may be filmed at different reduction ratios. Those too large to be entirely included in one exposure are filmed beginning in the upper left hand corner, left to right and top to bottom, as many frames as required. The following diagrams illustrate the method:



L'exemplaire filmé fut reproduit grâce à la générosité de:

Metropolitan Toronto Library
Canadian History Department

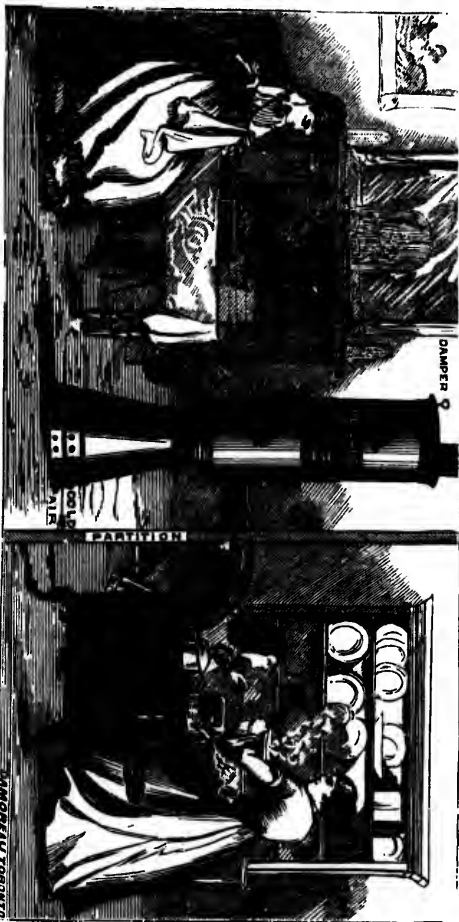
Les images suivantes ont été reproduites avec le plus grand soin, compte tenu de la condition et de la netteté de l'exemplaire filmé, et en conformité avec les conditions du contrat de filmage.

Les exemplaires originaux dont la couverture en papier est imprimée sont filmés en commençant par le premier plat et en terminant soit par la dernière page qui comporte une empreinte d'impression ou d'illustration, soit par le second plat, selon le cas. Tous les autres exemplaires originaux sont filmés en commençant par la première page qui comporte une empreinte d'impression ou d'illustration et en terminant par la dernière page qui comporte une telle empreinte.

Un des symboles suivants apparaîtra sur la dernière image de chaque microfiche, selon le cas: le symbole \rightarrow signifie "A SUIVRE", le symbole ∇ signifie "FIN".

Les cartes, planches, tableaux, etc., peuvent être filmés à des taux de réduction différents. Lorsque le document est trop grand pour être reproduit en un seul cliché, il est filmé à partir de l'angle supérieur gauche, de gauche à droite, et de haut en bas, en prenant le nombre d'images nécessaire. Les diagrammes suivants illustrent la méthode.

Cut No. 1



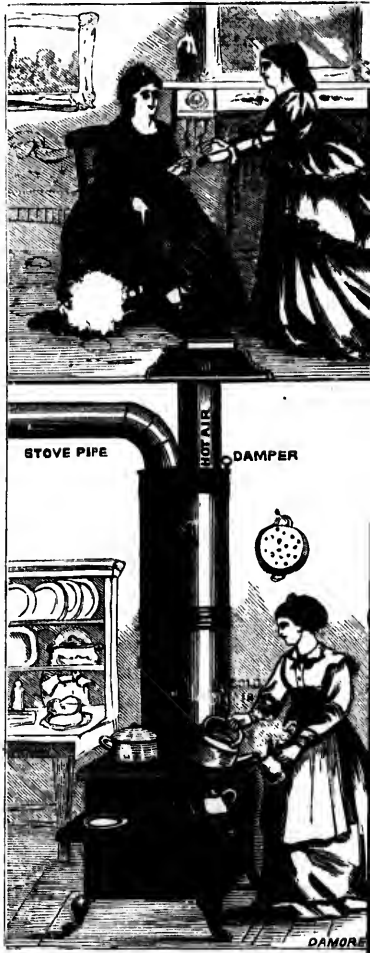
This cut shows a Sitting or Dining Room heated by a FUEL SAVER, connected with the kitchen stove by a pipe through the partition, both rooms on the same floor. (See price list.)

Cut No. 2



The FUEL SAVER is here placed in a bedroom, with kitchen stove in the room below; the closer its connection with the kitchen stove the better. See price list.

Cut No. 3



The FUEL SAVER is here shown placed on stove warming sitting room above by hot air return time not interfering with kitchen duties.

Cut No. 3



SAVER is here shown placed on the kitchen sitting room above by hot air register, at same time performing with kitchen duties. See price list.

Cut No. 4



This illustration shows the FUEL SAVER placed on an office stove; it could be similarly placed on any description of stove, burning coal or wood, increasing the heating power at least fifty per cent. See price list.

1872.

CIRCULAR
AND
PRICE LIST
OF
PEDLAR'S FUEL SAVER.

Patented October 7th, 1871, and Manufactured
by G. H. Pedlar, Oshawa, Ont.

The country abounds in poorly heated School Houses, Churches, as well as every description of public building, that could be rendered as pleasant and balmy as a May day, by attaching a Fuel Saver to the stoves.

Agent for

EXPLANATORY REMARKS UPON HEAT.

Heat is produced either by radiation as by an ordinary fireplace, or ordinary stove, or by circulation as in the case of any hot air furnace converting the cold air into warm. The latter process is by far the better mode of heating, for as it circulates and diffuses heated air, the heating process is more rarefied, uniform and complete. It is also more economical, because a larger measure of heated surface is obtained from the same quantity of fuel consumed; more even in temperature, for rooms heated by the ordinary stove or fireplace (radiation) may be exceedingly hot in one part, while in others it will often be found to be disagreeably cold.

Heating by circulation must surely supersede heating by radiation, so soon as the public are educated sufficiently to understand the difference between the two principles. At present the best buildings, public as well as private, are being heated upon the circulating principle, especially is this the case where a large measure of heat is required. Hitherto the chief hindrance to the adoption of this method in every house has been the expense of an apparatus by which the heated air is to be produced, and happily this hindrance no longer exists. Science, combined with ingenuity and perseverance, has at last overcome every difficulty, so that every house may have and enjoy the great luxury of a circulating heat. The revolution in the heating process is the **FUEL SAVER**, which will be briefly described.

THE FUEL SAVER.

As the following illustrations will show, the "Fuel Saver" does not differ much in its general appearance from the ordinary drum stove, but on closer examination it will be found to be quite a different thing altogether. It has an internal construction based upon the most scientific principles, and yet simple, making it one of the most powerful circulators of heated air. By and through an ample air chamber the cold air of the room is rapidly converted into warm air, and with any ordinary fire, as used in ordinary stoves, a vast amount of additional heat is produced in excess of what the stove—to which the Fuel Saver is attached—is capable of producing.

HOW THE FUEL SAVER UTILIZES HEAT.

There is constantly passing away through chimneys from kitchen and other stoves, especially the former, a vast amount of waste heat; this reckless waste the **FUEL SAVER** is capable of utilizing to such an extent that if attached to a kitchen stove, enough additional heat can be conveyed to an adjoining room on the same floor or the floor above, as the case may be, to render them comfortably warm. The following cuts illustrate the position of the **FUEL SAVER**, also the adjoining room, and as in such cases warming stoves are not needed, the **FUEL SAVER** is entitled to the name it bears.

SPECIAL ADVANTAGES.

Hitherto the ordinary drum stove was only a simple radiator of heat, like the stove over which it is usually placed, while the "**FUEL SAVER**" is really a small hot air furnace, doing the work of a furnace instead of a drum stove; and in many instances ordinary drums choke up after a short use, and become inefficient as radiators, by the accumulation of soot, etc. The "**Fuel Saver**" contains a moveable damper, which serves the double purpose of regulating the draft in the fireplace as well as cleaning out the accumulated soot in the Fuel Saver, thereby giving superior advantages over all other drums in use, or that have been invented.

Ordinary hot air furnaces, etc., are expensive, requiring a separate and independent structure and fireplace, an expense and preparation that only few find any inclination to enter into, and which the masses cannot afford, rendering them available only to the rich. The Fuel Saver, on the other hand, needs no separate and costly fire apparatus, but can be attached to any stove, and converts it into a furnace at a trifling cost, so trifling that it comes within the range of the poorest to be able to have one. The kitchen stove can be made available as a hot air furnace, performing its duties as such to other parts of the house, at the same time getting ready the frugal meal.

See illustrations.

Dimensions and Price List of

LARGE—17 inches in diameter by 50
made of good quality Canada plate

FANCY do, made of Russia Plate 17 by
to \$12.00.

MEDIUM SIZE—16 by 45 inches, Made
Canada plate Polished, . . .

SMALL—15 by 34 inches, made from good
plate Polished,

FANCY do, made of Russia plate 15 by

The above prices are exclusive of Stove
freight to any railway station in the Pro

For ordinary use we recommend the large
sizes are only used for small rooms.

In ordering a Fuel Saver be particular
stove pipe with which it is to connect. Al
state the height from the floor to top of
Fuel Saver is to be placed. Also which
Savers is desired. *By being particular me*
persons at a distance can, with the assistan
tions, attach a Fuel Saver to their stoves
cultly.

CAUTION.

Purchasers are requested to take noti
"Pedlar's Fuel Saver, Pro Bono Publico,
1871," are affixed to every Fuel Saver.

Persons infringing on the above paten
outed according to law.

Dimensions and Price List of Fuel Savers.

17 inches in diameter by 50 in height,
of good quality Canada plate Polished. \$ 8.00.
do, made of Russia Plate 17 by 54 inches. 10.00.
do. .00.

SIZE—18 by 45 inches. Made of good
Canada plate Polished. 7.00.

do, made of Russia plate 15 by 34 inches. 6.00.
do, made of Russia plate 15 by 38 inches. 7.00.

Above prices are exclusive of Stove Pipe, and include
to any railway station in the Province of Ontario.

For any use we recommend the larger sizes, the small
only used for small rooms.

When ordering a Fuel Saver be particular to state the size of
with which it is to connect. Also be particular to
height from the floor to top of stove on which a
is to be placed. Also which of the above Fuel
is desired. *By being particular merely in these details*
a distance can, with the assistance of the illustra-
ch a Fuel Saver to their stoves without any diffi-

CAUTION.

Persons are requested to take notice that the words,
Fuel Saver, Pro Bono Publico, Patented Oct. 7th,
affixed to every Fuel Saver.

Who infringing on the above patent will be prose-
cuting to law.

INFLUENTIAL TESTIMONIALS.

From the law firm of FAREWELL & MCGEE, as to how a
Fuel Saver heats an adjoining room on the same floor,
as shown in Cut No. 1.

G. H. PEDLAR, Esq., OSHAWA, 26th Dec., 1871.

DEAR SIR,—We are using Pedlar's Fuel Saver in our
office, and find that it obviates the necessity of having an
additional stove, the drum and one ordinary box stove heat-
ing two larger rooms, and doing the work very satisfactorily. We
burned a great deal more wood last winter in our stove, and
heated but one room; and besides the saving in fuel, the
temperature is kept more equable and pleasant, the Fuel
Saver having the effect of thoroughly diffusing the heat. We
consider it an excellent invention, and would not be with-
out it.

FAREWELL & MCGEE.

From SAMUEL LUKE, Esq. of Luke and Larke, proprie-
tors of the *Oshawa Vindicator*, showing how a Fuel
Saver placed in a room above a kitchen stove answers as
illustrated by Cut No. 2.

G. H. PEDLAR, Esq., OSHAWA, Dec., 26th, 1871.

SIR,—I take pleasure in bearing testimony to the
efficiency of your Fuel Saver as a heater. By attaching it to
the kitchen stove pipe, the heat heretofore wasted is turned
to good account, being conveyed to the second story and
diffused over two large bed rooms, rendering their atmos-
phere as genial as summer air.

Respectfully yours,

SAMUEL LUKE.

From C. HOLLAND, Esq., Manager, Ontario Bank, Oshawa.

Shows how a Fuel Saver works when placed as illustrat-
ed by Cut No. 3.

ONTARIO BANK, OSHAWA, Dec., 26th, 1871.

G. H. PEDLAR, Esq.,

The Fuel Saver put up by you in the Bank is giving
every satisfaction—heating the office as well as a large room
up stairs very comfortably. We consider it a decided success
in every way.

Yours truly,

C. HOLLAND, Manager.

From A. S. WHITING, Esq., of Whiting and Cowan, Cedar
Dale Works, Oshawa. Shows the advantages of a Fuel
Saver when placed like the one in Cut No. 4.

G. H. PEDLAR, Esq., OSHAWA, Dec., 21st, 1871.

It is with pleasure I add my testimony in favor of
your Fuel Saver. It is a great economizer of fuel, besides
producing a most uniform and pleasant temperature. Being
constructed upon sound philosophical principles, (heating by
circulating warm air) I think, with you, it must supersede all
radiating apparatuses that heat by radiating only.

A. S. WHITING.

SALEM, ONT., 18th Sept., 1872.

G. H. PEDLAR, OSHAWA, ONT.

DEAR SIR,—The Fuel Savers we got from you last
year has given us good satisfaction, and the one we used in
the store gave us a better heat with less than half the wood
we formerly used.

We are, yours truly,

J. & E. WISSLER.

NEWMARKET, Aug. 23rd, 1872.

I. W. COLLINS, Esq.,

DEAR SIR,—We have great pleasure in testifying to
the excellence of Pedlar's Fuel Saver, we would not like to
be without it.

HANISAN, SHEPPARD & Co., Merchants.

I. W. COLLINS, Esq.,

DEAR SIR,—I have had in use during two years last
past, two of Pedlar's Fuel Savers, one being in the hall of
my dwelling house, and one in my store. I approve of them
on two grounds, viz:—1st, they promote an important saving
of fuel, and 2nd, they distribute a warmth more wholesome
and agreeable than that which is radiated from stoves intense-
ly heated.

JOHN BENTLY, M. D.

NEWMARKET, Aug., 24, 1872.

DAVISON HOUSE, NEWMARKET, Aug. 24th, 1872.

I. W. COLLINS, Esq.,

SIR,—After two winters' use of one of Pedlar's Fuel-
Savers, I have much pleasure in testifying to its superiority
over any other to my knowledge, and would on no account
be deprived of the use of it, combining as it does the great
saving of fuel and circulation of natural heat.

JOHN DAVISON.

I. W. COLLINS, Esq.,

DEAR SIR,—I have thoroughly tested four of Pedlar's
Fuel Savers, and take pleasure in stating that they are what
is claimed for them—great Fuel Savers, at the same time
producing a more uniform and agreeable temperature than
can be obtained in the ordinary way.

ROBERT W. SMITH, J. P.

