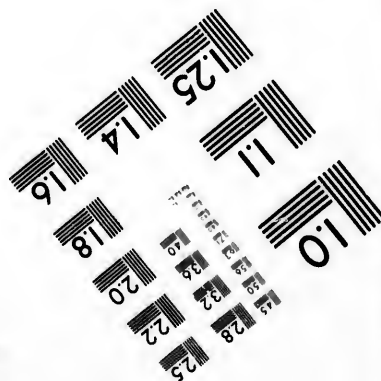
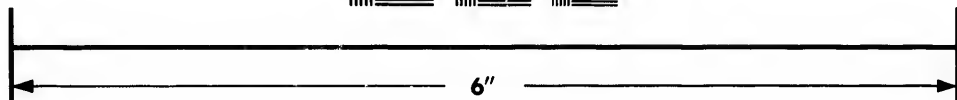
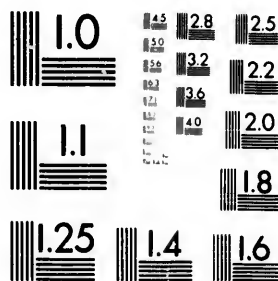


**IMAGE EVALUATION  
TEST TARGET™ (MT-3)**



**Photographic  
Sciences  
Corporation**

23 WEST MAIN STREET  
WEBSTER, N.Y. 14580  
(716) 872-4503

15 28  
32 25  
20  
8

**CIHM/ICMH  
Microfiche  
Series.**

**CIHM/ICMH  
Collection de  
microfiches.**



**Canadian Institute for Historical Microreproductions / Institut canadien de microreproductions historiques**

10

**© 1981**

Technical and Bibliographic Notes/Notes techniques et bibliographiques

The Institute has attempted to obtain the best original copy available for filming. Features of this copy which may be bibliographically unique, which may alter any of the images in the reproduction, or which may significantly change the usual method of filming, are checked below.

L'Institut a microfilmé le meilleur exemplaire qu'il lui a été possible de se procurer. Les détails de cet exemplaire qui sont peut-être uniques du point de vue bibliographique, qui peuvent modifier une image reproduite, ou qui peuvent exiger une modification dans la méthode normale de filmage sont indiqués ci-dessous.

- Coloured covers/  
Couverture de couleur
- Covers damaged/  
Couverture endommagée
- Covers restored and/or laminated/  
Couverture restaurée et/ou pelliculée
- Cover title missing/  
Le titre de couverture manque
- Coloured maps/  
Cartes géographiques en couleur
- Coloured ink (i.e. other than blue or black)/  
Encre de couleur (i.e. autre que bleue ou noire)
- Coloured plates and/or illustrations/  
Planches et/ou illustrations en couleur
- Bound with other material/  
Relié avec d'autres documents
- Tight binding may cause shadows or distortion along interior margin/  
La reliure serrée peut causer de l'ombre ou de la distorsion le long de la marge intérieure
- Blank leaves added during restoration may appear within the text. Whenever possible, these have been omitted from filming/  
Il se peut que certaines pages blanches ajoutées lors d'une restauration apparaissent dans le texte, mais, lorsque cela était possible, ces pages n'ont pas été filmées.
- Additional comments:/  
Commentaires supplémentaires:

- Coloured pages/  
Pages de couleur
- Pages damaged/  
Pages endommagées
- Pages restored and/or laminated/  
Pages restaurées et/ou pelliculées
- Pages discoloured, stained or foxed/  
Pages décolorées, tachetées ou piquées
- Pages detached/  
Pages détachées
- Showthrough/  
Transparence
- Quality of print varies/  
Qualité inégale de l'impression
- Includes supplementary material/  
Comprend du matériel supplémentaire
- Only edition available/  
Seule édition disponible
- Pages wholly or partially obscured by errata slips, tissues, etc., have been refilmed to ensure the best possible image/  
Les pages totalement ou partiellement obscurcies par un feuillet d'errata, une pelure, etc., ont été filmées à nouveau de façon à obtenir la meilleure image possible.

This item is filmed at the reduction ratio checked below/  
Ce document est filmé au taux de réduction indiqué ci-dessous.

10X	14X	18X	22X	26X	30X
<input type="checkbox"/>	<input type="checkbox"/>	<input type="checkbox"/>	<input checked="" type="checkbox"/>	<input type="checkbox"/>	<input type="checkbox"/>
12X	16X	20X	24X	28X	32X

The copy filmed here has been reproduced thanks to the generosity of:

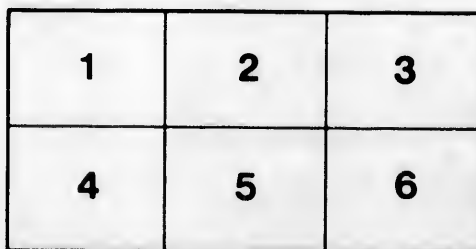
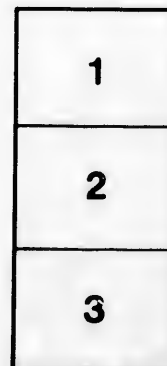
Library Division  
Provincial Archives of British Columbia

The images appearing here are the best quality possible considering the condition and legibility of the original copy and in keeping with the filming contract specifications.

Original copies in printed paper covers are filmed beginning with the front cover and ending on the last page with a printed or illustrated impression, or the back cover when appropriate. All other original copies are filmed beginning on the first page with a printed or illustrated impression, and ending on the last page with a printed or illustrated impression.

The last recorded frame on each microfiche shall contain the symbol → (meaning "CONTINUED"), or the symbol ∇ (meaning "END"), whichever applies.

Maps, plates, charts, etc., may be filmed at different reduction ratios. Those too large to be entirely included in one exposure are filmed beginning in the upper left hand corner, left to right and top to bottom, as many frames as required. The following diagrams illustrate the method:



L'exemplaire filmé fut reproduit grâce à la générosité de:

Library Division  
Provincial Archives of British Columbia

Les images suivantes ont été reproduites avec le plus grand soin, compte tenu de la condition et de la netteté de l'exemplaire filmé, et en conformité avec les conditions du contrat de filmage.

Les exemplaires originaux dont la couverture en papier est imprimée sont filmés en commençant par le premier plat et en terminant soit par la dernière page qui comporte une empreinte d'impression ou d'illustration, soit par le second plat, selon le cas. Tous les autres exemplaires originaux sont filmés en commençant par la première page qui comporte une empreinte d'impression ou d'illustration et en terminant par la dernière page qui comporte une telle empreinte.

Un des symboles suivants apparaîtra sur la dernière image de chaque microfiche, selon le cas: le symbole → signifie "A SUIVRE", le symbole ∇ signifie "FIN".

Les cartes, planches, tableaux, etc., peuvent être filmés à des taux de réduction différents. Lorsque le document est trop grand pour être reproduit en un seul cliché, il est filmé à partir de l'angle supérieur gauche, de gauche à droite, et de haut en bas, en prenant le nombre d'images nécessaire. Les diagrammes suivants illustrent la méthode.

ails  
du  
modifier  
une  
page

rata  
0  
elure,  
à

NWP  
971.61  
R986r

*E. C. Baker Esq  
Victoria B. C.*



# RULES

FOR THE GOVERNMENT

— OF THE —

# ROYAL HOSPITAL

VICTORIA, B. C.

ESTABLISHED IN 1869.

SUPPORTED BY VOLUNTARY CONTRIBUTIONS AND ASSISTED  
BY GOVERNMENT GRANT.

VICTORIA, B. C.

PRINTED AT THE OFFICE OF THE DAILY BRITISH COLONIST,  
1877.

British Colonist Steam Presses.





# RULES

FOR THE GOVERNMENT

— OF THE —

# ROYAL HOSPITAL

VICTORIA, B. C.

---

ESTABLISHED IN 1859.

SUPPORTED BY VOLUNTARY CONTRIBUTIONS AND ASSISTED  
BY GOVERNMENT GRANT.

---

VICTORIA, B. C.

PRINTED AT THE OFFICE OF THE DAILY BRITISH COLONIST,

1877.

mwp  
971.61  
R886c

# OFFICERS,

## MEDICAL AND OTHERS.

---

---

HON. PHYSICIANS AND SURGEONS:

JOHN ASH, M. D., M. R. C. S., L. S. A.

J. S. HELMCKEN, M. R. C. S., L. S. A.

J. B. MATTHEWS, M. R. C. S., L. S. A.

I. W. POWELL, M. D.

---

VISITING SURGEON, - - - - - J. C. DAVIE, M. D.

---

SUPERINTENDENT, - - - - - MR. GILBERT ROBINSON

---

MATRON, - - - - - MRS. ROBINSON

---

HEAD NURSE, - - - - - E. PRICE

ment  
names  
an an  
bring  
  
the si  
view o  
  
a fem  
  
easy  
tients  
  
just s  
have  
prese  
secu  
the h  
made  
capal  
pipes  
  
taken  
book  
  
book  
rece



VICTORIA, May, 1877.

In publishing the following revised Rules for the management of the Royal Hospital the Board of Directors, whose names are herewith appended, are happy to state that aided by an annual grant from the Government they have been able to bring the institution to an improved state of efficiency.

The Hospital is situated at the head of Pandora street; the site being elevated and airy and commanding a beautiful view of the surrounding scenery.

The building comprises two large and two small wards, a female ward, a day ward, dispensary, officers' quarters, &c.

The wards are furnished with appropriate iron bedsteads, easy chairs, and other conveniences for the reception of patients.

The Government grant of five thousand dollars a year is just sufficient for the barest necessities. The Directors therefore have to look to the public for liberal subscriptions so that its present efficiency may be maintained and further comforts secured; that additional accommodation may be afforded for the better classifying of patients; that improvements may be made about the recreation grounds; (which indeed have great capabilities) that the drainage may be perfected and that water pipes may be brought in from the city mains.

The Directors are pleased to notice the increasing interest taken by the public in the Hospital as shown by the visitors' book.

The nucleus of a library has been formed, and donations of books and periodicals, new or second hand, will be thankfully received. Contributions of old linen will always be acceptable.

E. GRANCINI, President.  
W. C. WARD, Treasurer.  
H. L. JONES, Secretary.  
THOS. ALLSOP,  
JAS. BURNS,  
HENRY SHORT,  
M. W. T. DRAKE,  
THOS. SHOTBOLT.

153381



18

T  
affordin  
nations

T  
Preside

T  
trol of  
by the  
number  
(  
power t



T  
the ann  
of Dire  
annum

T  
and em  
these ru  
appropri  
urer, ex  
of patie



T  
for the  
during  
after ea  
tute a c

T  
ing, ap  
shall vi  
its con

# ROYAL HOSPITAL,

VICTORIA, B. C.

◆ ◆ ◆

## RULE I.

This Hospital has been instituted with the object of affording medical relief to the indigent sick and afflicted of all nations residing in the Province.

## RULE II.

The officers shall consist of a Board of eight Directors, a President, Treasurer, Secretary, Auditor, and Visiting Surgeon.

## RULE III.

The institution shall be under the management and control of a Board of Directors consisting of six, elected annually by the subscribers, with power to fill up vacancies in their number from time to time from among the subscribers.

(At the present time the Provincial Government have the power to appoint two other Directors.)

## RULE IV.

The six Directors shall be elected by the subscribers at the annual meeting. No person shall be eligible for the office of Director unless he be a subscriber of at least five dollars per annum or be a life member. The election shall be by ballot.

## RULE V.

The Board of Directors shall appoint all officers, servants, and employes of the institution, except otherwise ordered by these rules; they shall have entire control of the funds, direct the appropriation and payment of all money received by the Treasurer, examine all bills and accounts, and determine the number of patients which may at any time be received into the Hospital.

## RULE VI.

The said Board of Directors shall hold a monthly meeting for the transaction of general business. The time of meeting during the ensuing year to be decided on at their first session after each annual meeting. At such meetings four shall constitute a quorum.

## RULE VII.

The said Board of Directors shall at each monthly meeting, appoint a Visiting Committee of two of their number, who shall visit the Hospital at least once a week and give a report of its condition, &c., to the Board at the next meeting.

**RULE VIII.**

The President shall be elected by the Board of Directors from among their own number at the first meeting of Directors after the annual one.

**RULE IX.**

He shall be ex-officio chairman of the Board of Directors, and shall be empowered at his own instance, at any time to call a special meeting of the Board.

**RULE X.**

He shall convene a special general meeting of subscribers upon a written request to such effect being addressed to him, if signed by at least ten subscribers entitled to vote.

**RULE XI.**

He shall be entitled to a casting vote only at all meetings at which he may be chairman.

**RULE XII.**

The election and tenure of office of Treasurer shall be subject to the same form as that of President, (see Rule 8).

**RULE XIII.**

He shall deposit all sums of money received by him and belonging to the institution in such place as the Board of Directors shall designate, and shall not pay out any money except as authorized by the Board at their monthly meeting. At any monthly meeting, if required, he shall give a statement of the finances of the institution, together with the vouchers for all payments made by him.

**RULE XIV.**

The election and tenure of office of Secretary shall be subject to the same form as that of President, (see Rule 8).

**RULE XV.**

He shall keep the minutes of all meetings of Directors and subscribers and perform such service as the Board of Directors shall determine.

**RULE XVI.**

The Board of Directors shall engage the services of an Auditor (but not being an officer of the Hospital) to examine all accounts, vouchers and pass books, and make a report of the state of the funds for the past year; the fee for such services to be paid out of the funds of the institution.

**RULE XVII.**

A Visiting Surgeon shall be elected annually by the Board of Directors on such terms and conditions and with such salary as they shall determine.

**RULE XVIII.**

Except in cases otherwise provided for, no officer ap-

pointed  
meeting  
forehand

S  
at all ge  
votes.  
Such de  
subscri

T  
second

A  
ceeding  
each su

F  
patient  
signed  
to the V  
decide  
should  
Hospit

I  
tients r  
or if he  
whose  
Surge

geon o  
of a p  
Comm

of pro  
a char  
recev

of the  
as th

pointed by the Board of Directors shall be removed except at a meeting of the Board to be duly summoned and informed beforehand of the special business of the meeting.

**RULE XIX.**

Subscribers of \$2.50 annually shall be entitled to a vote at all general meetings. Subscribers of \$10 annually to two votes. A donation of \$100 shall constitute a life membership. Such donor to be entitled to all the privileges of an annual subscriber.

**RULE XX.**

The general meeting of subscribers shall be held on the second Wednesday in the month of February in every year.

**RULE XXI.**

At all convenient times the accounts, minutes and proceedings of the institution shall be open to the inspection of each subscriber.

**RULE XXII.**

Every person desiring admission to the Hospital as a patient must obtain a written or printed recommendation signed by at least two Directors, which must be presented to the Visiting Surgeon who shall examine the applicant and decide whether to admit the same as an in or out patient, and should he upon examination find the applicant not in need of Hospital care he may refuse to admit the same.

**RULE XXIII.**

In case of accident requiring immediate treatment, patients may be admitted by the Surgeon on his sole authority, or if he be absent, by any officer of the institution then present, whose action however shall be subject to the approval of the Surgeon.

**RULE XXIV.**

An appeal may be made against any decision of the Surgeon or other officer in reference to the admission or rejection of a patient, to the Board of Directors through the Visiting Committee.

**RULE XXV.**

Should any patient die at the Hospital who is possessed of property, the Board of Directors may, at their option, make a charge on his estate for his maintenance while an inmate and recover the same by legal proceedings if necessary.

**RULE XXVI.**

Religious services for the patients, inmates and servants of the Hospital may be held at such times and in such manner as the Board of Directors shall appoint.

**RULE XXVII.**

Any By-Law adopted by the Board of Directors may be

amended or repealed by a vote of two-thirds of the subscribers present at any general meeting.

**RULE XXVIII.**

A copy of the By-Laws or Regulations relating to the conduct of the patients and inmates shall be suspended in each ward or room of the Hospital.

**List of Subscriptions to the Royal Hospital for the Year 1876.**

Sir James Douglas, K. C. B . . . . .	\$20 00	Sproat & Co . . . . .	5 00	D. Leneven . . . . .	5 00
Hudson Bay Co. . . . .	50 00	Hy Saunders . . . . .	5 00	Sam'l Nesbitt . . . . .	5 00
Hon Justice Crease . . . . .	5 00	Goodaere & Dooley . . . . .	5 00	Dr Jackson . . . . .	5 00
Muirhead & Mann . . . . .	5 00	Samuel Clay . . . . .	5 00	Geo Morrison . . . . .	2 50
A. T. D. McElhann . . . . .	5 00	T. Shotbolt . . . . .	2 50	Dr Tolmie . . . . .	5 00
H. F. Heisterman . . . . .	5 00	Edgar Marvin . . . . .	2 50	S. L. Kelly . . . . .	5 00
Henry Short . . . . .	5 00	T. Stewart . . . . .	5 00	A. Gilmore . . . . .	5 00
S. L. Kelly, 1876 . . . . .	5 00	A. DeWeiderhold . . . . .	2 50	J. Goodfellow . . . . .	5 00
Stafford & Goodaere 1875 and 1876 . . . . .	10 00	A. B. Gray . . . . .	5 00	G. C. Keays . . . . .	5 00
G. C. Keays . . . . .	5 00	I. Braverman . . . . .	1 00	J. H. Todd . . . . .	5 00
J. G. Taylor . . . . .	1 00	J. Hawkins . . . . .	1 00	Geo Irvin . . . . .	50
J. S. Drummond . . . . .	1 00	E. Reynolds . . . . .	1 00	A. Casamayou . . . . .	3 00
R. Austin . . . . .	5 00	Jas Rhode . . . . .	1 00	T. H. Tye . . . . .	5 00
T. Story . . . . .	5 00	P. McTiernan . . . . .	1 00	W. J. Jeffree . . . . .	5 00
H. Saunders . . . . .	5 00	W. Muldoon . . . . .	2 50	W. Heathorn . . . . .	5 00
S. Nesbett . . . . .	1 00	J. Hedin . . . . .	1 00	A. A. Green . . . . .	5 00
E. C. Baker . . . . .	5 00	R. Haggerty . . . . .	1 00	Thos Allsop . . . . .	5 00
Jas Burns . . . . .	5 00	J. Lang . . . . .	1 00	Thos Russel . . . . .	5 00
John Stewart . . . . .	1 00	M. W. T. Drake . . . . .	10 00	F. Neufelder & Co. . . . .	5 00
R. Campbell . . . . .	2 00	P. O'Reilly . . . . .	5 00	A. McLean . . . . .	5 00
Rev Mr Baskett . . . . .	5 00	Thos Trounce . . . . .	5 00	J. D. Robinson . . . . .	5 00
Moore & Co . . . . .	5 00	Langley & Co . . . . .	10 00	Alex Wilson . . . . .	5 00
F. Reynolds . . . . .	5 00	B. W. Pearse . . . . .	20 00	Vancouver Coal Co. . . . .	25 00
T. J. Partridge . . . . .	5 00	Dr Davie . . . . .	5 00	J. W. Griffiths . . . . .	5 00
E. Grancini . . . . .	10 00	James Fell . . . . .	5 00	John Blackman . . . . .	1 00
A. Van Bokeren . . . . .	10 00	J. Douglas, Jr, MPP . . . . .	5 00	W. C. Webster . . . . .	2 00
Stahlschmidt & Ward . . . . .	5 00	E. B. Marvin . . . . .	2 50	Thos Ariss . . . . .	2 00
Welch Rithet & Co. . . . .	10 00	Jas Strachan . . . . .	2 00	W. Jackson . . . . .	1 00
Richard Carr . . . . .	10 00	Jas Burns . . . . .	5 00	Jos Blatt . . . . .	1 00
Strouss, Briggs, K. & Co . . . . .	10 00	H. W. Doscher . . . . .	5 00	Hayward & Jenkins'n . . . . .	5 00
Turner, Beeton & Co . . . . .	10 00	John Boyd . . . . .	3 00	A. C. Couves . . . . .	2 50
Findlay, D. & Co . . . . .	10 00	Henry Mansell . . . . .	5 00	Geo McIntosh . . . . .	3 00
P. McQuade & Son . . . . .	5 00	John McAllister . . . . .	5 00	W. Andean . . . . .	10 00
		Robert Wallace . . . . .	5 00	Joseph Spratt . . . . .	5 00
		Mansell & Holroyd . . . . .	5 00	S. McGregor . . . . .	5 00
		C. W. R. Thomson . . . . .	10 00		

**COLLECTED BY**

P. Steele . . . . .	\$ 9 00	John Wilson . . . . .	3 00	Mr Willis . . . . .	1 50
Jas Strachan . . . . .	8 00	F. Carne . . . . .	3 00	G. Blackall . . . . .	1 00
E. Wood . . . . .	7 00	George Coleman . . . . .	2 00	G. Lefrenier . . . . .	1 00
Charels Phillips . . . . .	6 00	W. Morgan . . . . .	1 75	J. Wriglesworth . . . . .	1 00
P. Manetta . . . . .	4 75	A. McNab . . . . .	\$ 8 50	W. Armstrong . . . . .	75
Andrew Astricc . . . . .	4 75	John Boyd . . . . .	12 00	Loshe & Co . . . . .	2 00
Frank Campbell . . . . .	4 50	P. Everett . . . . .	10 00	J. Lewis, Cedar Hill . . . . .	2 50



