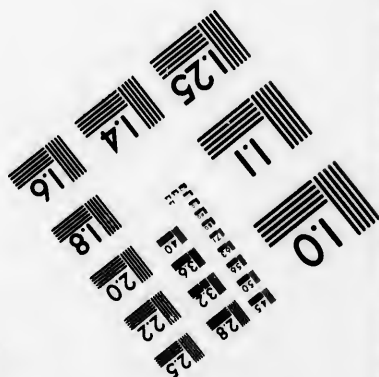
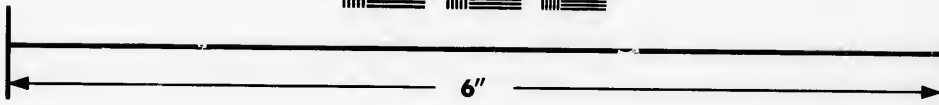
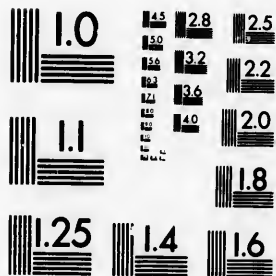


**IMAGE EVALUATION  
TEST TARGET (MT-3)**



**Photographic  
Sciences  
Corporation**

23 WEST MAIN STREET  
WEBSTER, N.Y. 14580  
(716) 872-4503

**CIHM/ICMH  
Microfiche  
Series.**

**CIHM/ICMH  
Collection de  
microfiches.**



**Canadian Institute for Historical Microreproductions / Institut canadien de microreproductions historiques**

**© 1983**

Technical and Bibliographic Notes/Notes techniques et bibliographiques

The Institute has attempted to obtain the best original copy available for filming. Features of this copy which may be bibliographically unique, which may alter any of the images in the reproduction, or which may significantly change the usual method of filming, are checked below.

L'Institut a microfilmé le meilleur exemplaire qu'il lui a été possible de se procurer. Les détails de cet exemplaire qui sont peut-être uniques du point de vue bibliographique, qui peuvent modifier une image reproduite, ou qui peuvent exiger une modification dans la méthode normale de filmage sont indiqués ci-dessous.

- Coloured covers/  
Couverture de couleur
- Covers damaged/  
Couverture endommagée
- Covers restored and/or laminated/  
Couverture restaurée et/ou pelliculée
- Cover title missing/  
Le titre de couverture manque
- Coloured maps/  
Cartes géographiques en couleur
- Coloured ink (i.e. other than blue or black)/  
Encre de couleur (i.e. autre que bleue ou noire)
- Coloured plates and/or illustrations/  
Planches et/ou illustrations en couleur
- Bound with other material/  
Relié avec d'autres documents
- Tight binding may cause shadows or distortion along interior margin/  
La reliure serrée peut causer de l'ombre ou de la distortion le long de la marge intérieure
- Blank leaves added during restoration may appear within the text. Whenever possible, these have been omitted from filming/  
Il se peut que certaines pages blanches ajoutées lors d'une restauration apparaissent dans le texte, mais, lorsque cela était possible, ces pages n'ont pas été filmées.
- Additional comments:/  
Commentaires supplémentaires:

- Coloured pages/  
Pages de couleur
- Pages damaged/  
Pages endommagées
- Pages restored and/or laminated/  
Pages restaurées et/ou pelliculées
- Pages discoloured, stained or foxed/  
Pages décolorées, tachetées ou piquées
- Pages detached/  
Pages détachées
- Showthrough/  
Transparence
- Quality of print varies/  
Qualité inégale de l'impression
- Includes supplementary material/  
Comprend du matériel supplémentaire
- Only edition available/  
Seule édition disponible
- Pages wholly or partially obscured by errata slips, tissues, etc., have been refilmed to ensure the best possible image/  
Les pages totalement ou partiellement obscurcies par un feuillet d'errata, une pelure, etc., ont été filmées à nouveau de façon à obtenir la meilleure image possible.

This item is filmed at the reduction ratio checked below/  
Ce document est filmé au taux de réduction indiqué ci-dessous.

10X	12X	14X	16X	18X	20X	22X	24X	26X	28X	30X	32X
					✓						

The copy filmed here has been reproduced thanks to the generosity of:

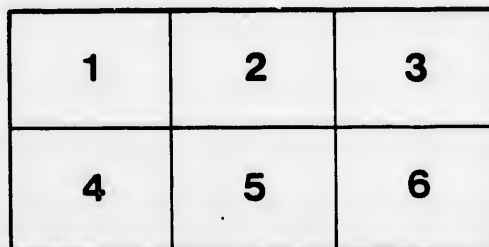
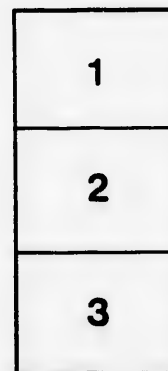
Glenbow-Alberta Institute  
Calgary

The images appearing here are the best quality possible considering the condition and legibility of the original copy and in keeping with the filming contract specifications.

Original copies in printed paper covers are filmed beginning with the front cover and ending on the last page with a printed or illustrated impression, or the back cover when appropriate. All other original copies are filmed beginning on the first page with a printed or illustrated impression, and ending on the last page with a printed or illustrated impression.

The last recorded frame on each microfiche shall contain the symbol  $\rightarrow$  (meaning "CONTINUED"), or the symbol  $\nabla$  (meaning "END"), whichever applies.

Maps, plates, charts, etc., may be filmed at different reduction ratios. Those too large to be entirely included in one exposure are filmed beginning in the upper left hand corner, left to right and top to bottom, as many frames as required. The following diagrams illustrate the method:



L'exemplaire filmé fut reproduit grâce à la générosité de:

Glenbow-Alberta Institute  
Calgary

Les images suivantes ont été reproduites avec le plus grand soin, compte tenu de la condition et de la netteté de l'exemplaire filmé, et en conformité avec les conditions du contrat de filmage.

Les exemplaires originaux dont la couverture en papier est imprimée sont filmés en commençant par le premier plat et en terminant soit par la dernière page qui comporte une empreinte d'impression ou d'illustration, soit par le second plat, selon le cas. Tous les autres exemplaires originaux sont filmés en commençant par la première page qui comporte une empreinte d'impression ou d'illustration et en terminant par la dernière page qui comporte une telle empreinte.

Un des symboles suivants apparaîtra sur la dernière image de chaque microfiche, selon le cas: le symbole  $\rightarrow$  signifie "A SUIVRE", le symbole  $\nabla$  signifie "FIN".

Les cartes, planches, tableaux, etc., peuvent être filmés à des taux de réduction différents. Lorsque le document est trop grand pour être reproduit en un seul cliché, il est filmé à partir de l'angle supérieur gauche, de gauche à droite, et de haut en bas, en prenant le nombre d'images nécessaire. Les diagrammes suivants illustrent la méthode.

ails  
du  
modifier  
une  
nage

rata  
o

elure,  
à

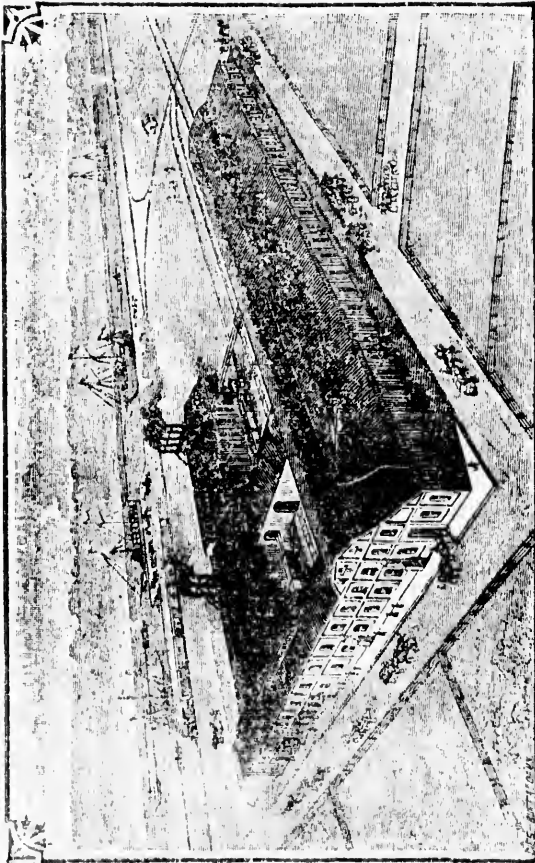
DOMINION BARB-WIRE CO.

(LIMITED.)

SOLE MANUFACTURERS OF

“LYMAN”

STEEL FENCING.



WORKS AT LACHINE (NEAR MONTREAL.)

Warehouses :

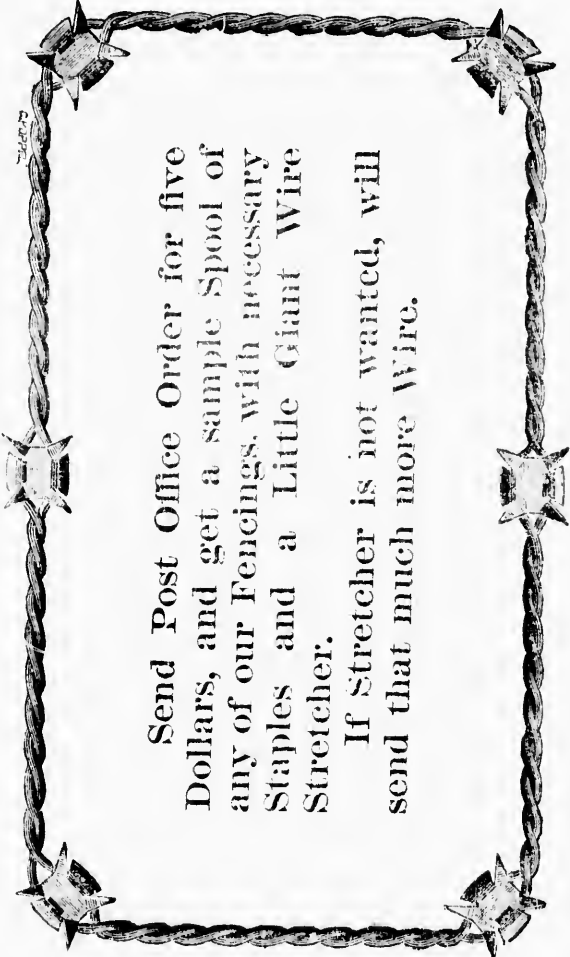
44 FOUNDLING ST.,

MONTREAL.

25 FRONT ST. EAST,

TORONTO.

THE  
New Tablet Fencing.



Send Post Office Order for five Dollars, and get a sample Spool of any of our Fencings, with necessary Staples and a Little Giant Wire Stretcher.

If Stretcher is not wanted, will send that much more Wire.

**DOMINION BARB-WIRE CO.**

(LIMITED)

MONTREAL.

14001



Spring, 1886.

OWING to the increased demand for their fencing—the difficulty in getting plain wire from England without becoming injured by crossing the Atlantic, together with the delay occasioned by transporting at such a distance, they have at great cost and expense built a large wire mill at Lachine, (7 miles from Montreal) and have put down the very latest improved wire drawing and galvanizing machinery, thus enabling them by the

→\* **PATENT PROCESSES** \*←

under which they manufacture, to produce a quality of material which is superior to any imported, the galvanizing is also better, being brighter, and when manufactured into fencing, much superior in appearance as well as quality, and the fact that they do over half of the fencing business of Canada is sufficient evidence that the

“Lyman” Brand

— IS —

THE FAVORITE.




# BARB WIRE FENCING

HAS SOLVED THE FENCE PROBLEM,

ASSURING A

## PERFECT FENCE

 OVER 500,000 miles of Barb Wire Fencing have been erected since 1884.

Barb Wire makes a saving of nearly one-half the cost of other fences and is what is wanted by the

FARMER,

PLANTER,

HERDSMAN,

SHEEP-BREEDER,

CATTLE RAISER,

FRUIT & VINE GROWER.

### IT ASSURES A

perfect and indestructible fence, which cannot be destroyed by Wind, Flood or Fire.

Protects sheep against dogs and is perfectly effective as a pasture fence.

It is absolutely, the only stock fence adapted to all conditions of Husbandry, and all climates, is a complete barrier to trespassers.

It is used by all the Railways in Canada, and is acknowledged to be the cheapest and easiest handled, of all fence material.



While Barb Wire is cheaper and more efficient than any other material as a protector of crops and controller of domestic animals, it has another important quality not possessed by the ordinary fences of the country, for, as it offers no obstruction to snow laden winds, it accumulates no snow-drifts. The winter highway thus escape the snow-drifts of which close fences are the universally recognized producing cause—a fact Railway Managers and Township authorities are beginning to thoroughly understand and appreciate.

In this respect as a field fence, it **totally does away with a difficulty**, often the subject of complaint and loss among farmers, from the snow-drifts that in exposed situations accumulate along the lee of the rail fence, **holding a wide strip along one side of the fence out of cultivation for weeks after the farmer's spring work has begun.**

As the foregoing remarks are applicable to Barb Wire generally, we now desire to particularly call your attention to the

## Lyman 2 and 4 Point **STEEL BARB FENCING**

of which we are the sole manufacturers. This consists of two stout wires, carrying at short intervals of space, a firmly twisted barb, that presents **thorn-like points to repel assault and command the respect and forbearance of all trespassers, Human or quadruped.**

**Certain well ascertained facts have been ascertained as follows:**

1. Barb Wire Fencing should consist of at least two wires twisted together; for the sake of strength, and the better to resist all changes of Temperature.

2. The **Barb** used in connection with **two wires** should not be twisted around both wires, which defeats the object of the two wires, **preventing their coiling together or uncoiling slightly with the cold or heat.**

3. The **Barb** must be short enough, so that it will not necessarily tear the animal. A sharp instantaneous prick is all that is needed.

4. The **Barb** must be firmly twisted upon only one of the two wires; the second wire thus holds it in its place.

5. The **Barb**, with reference to the main wire or wires, should not form in the slightest sense a **Hook.**

6. The **Barbs** should be as light as possible in weight, and still be efficient, for the material is bought by the pound.

The **Barb Wire Fencing** manufactured by us includes and assures the foregoing essential merits.

This **Barb Fencing** was invented in 1873 by a practical farmer, and to meet farmers needs, and the first fence so made by him is still standing. It was made entirely by hand, is somewhat crude but answers every requirement and bids fair to do so for many years to come. For the foregoing reasons alone we claim that the

## **“Lyman” Fencing**

is superior to any other style of **Barb Fencing** made, but it has other merits worthy of the consideration of all persons interested in the constructions of fences. **The Dominion Barb Wire Company** have been actively engaged in the production of wire fencing for the past six years, and are now the **largest manufacturers** of **Barb Fencing** and are the only manufacturers of wire in Canada, besides being the largest of **Barb Fencing** and the only concern who make their **Barb fencing** from wire of their own manufacture.

All the wire used in our fencing is steel drawn by our patent process, securing long lengths, with perfect evenness and uniformity in strength; results impossible with inferior modes of manufacture, which are sure to give a faulty and flawed wire, and will bring disappointment and loss to the consumer. All good fence wire should have this prime essential of strength, as weak places are treacherous, and are most likely to reveal themselves just when the crops are the most tempting, and need perfect security against trespass. The protection of the wire against deterioration by rust is best assured by our perfect galvanizing, whereby the surface is completely shielded. Our painted and japanned wires, however, give excellent satisfaction, cost considered.

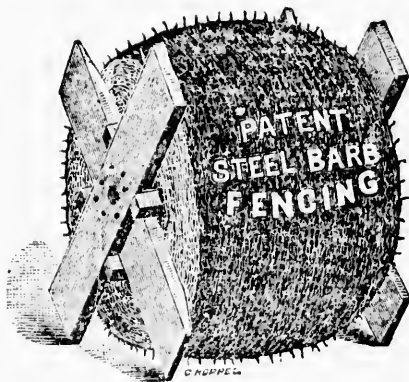
We can supply plain wire of all sizes Nos. 6 and upwards, and guarantee the quality equal to the best imported steel and far superior to the Iron wire now generally in use.



All barb wire made by us is shipped on spools of 100 to 115 pounds each, and holds 1400 to 1600 feet of fencing.

We also supply wire on half reels or "ponies" weighing 50 to 65 pounds each.

Each reel has a hole bored through the centre so that it can be carried by a boy on an ordinary crow bar. A farmer's team will carry enough barb wire to build one half to two miles of a perfectly secure and staunch fence.

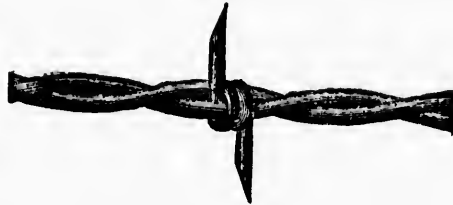




The above is a cut of our **4 Barb** (locked) of which we make two sizes.

*A.*—Barbs 6 inches apart, are best adapted for pastures and Railway fences, to turn horses, cattle, &c.

*B.*—Barbs 4 inches apart, are usually used where the fencing is wanted to keep in sheep, hogs and small stock.



Under special arrangement with THE WASHBURN & MOEN MFG. Co., we have secured the right to manufacture the 2 barb fencing, formerly made only by them. We intend to make a specialty of this fencing, and guarantee to supply a quality equal, if not superior to any ever before made. This is also made in two sizes "G" with barbs 5 inches apart and "H" or "thicket" barbs  $2\frac{1}{2}$  inches apart.

## 12 POINTS OF MERIT

—IX—

### BARB-WIRE FOR FENCES

—o—

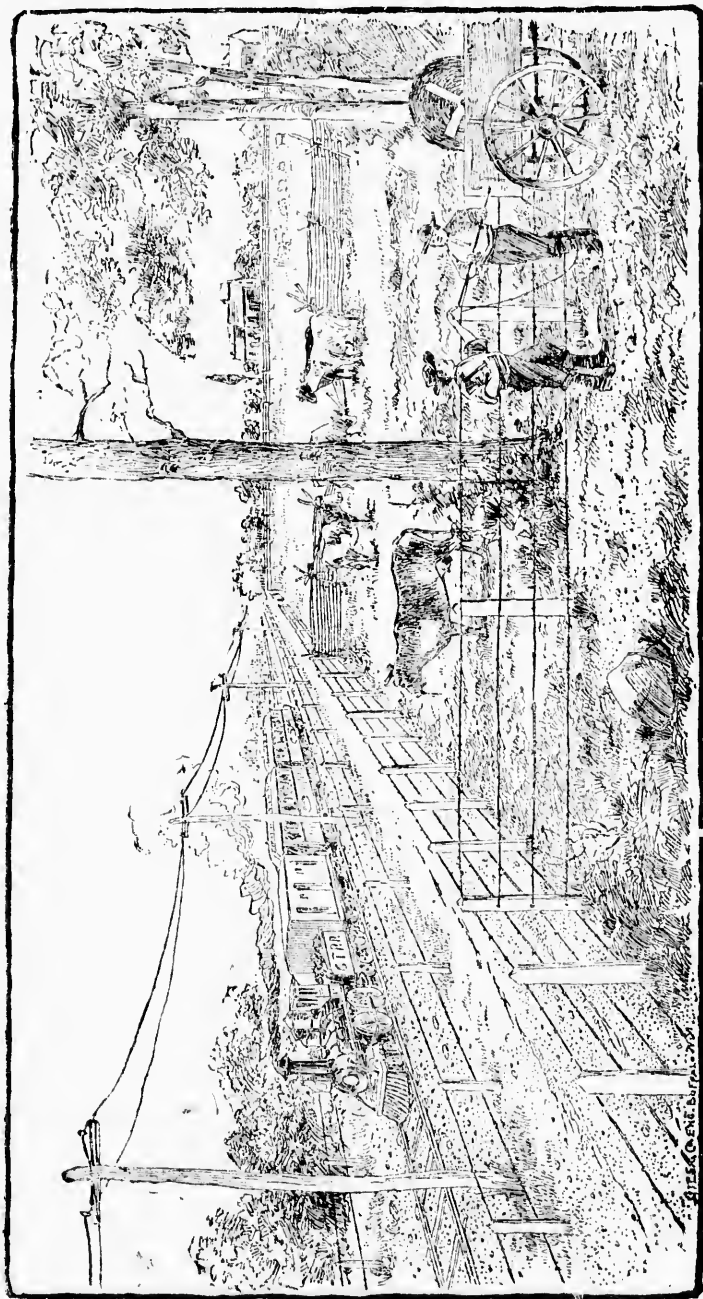
- 1.—It is the cheapest fence that can be erected.
- 2.—It is the most durable.
- 3.—It is not affected by wind, fire and flood.
- 4.—It prevents snow drifts from accumulating.
- 5.—It takes fewer posts than a rail fence.
- 6.—Stock cannot push it down, it being a complete steel hedge.
- 7.—It takes but little room, and land can be cultivated up to it.
- 8.—It is so easily and quickly erected.
- 9.—It is easily seen, thus overcoming one of the main objections to a plain wire fence.
- 10.—It will keep cattle and horses in.
- 11.—It is especially adapted for sheep farms, keeping the sheep in, and dogs and wolves out.
- 12.—It is the greatest practical invention of the age.

—o—

### ONE OBJECTION

Where our **BARB FENCE** is unknown, the objection is sometimes raised that Cattle would be injured by running against the barbs, but it has no foundation whatever, as all the largest Stock-raisers in America use this fence, and in no instance have we heard of injury to Cattle.

One thing that must be remembered is that twisting the wires and the use of barbs present to the eye a much larger surface than plain wire, and cattle and horses find out that the fence is impregnable and give it a wide berth.



SHOWING MODE OF ERECTING BARB-WIRE FENCING.

(See Page 1.)

In many hill pastures and wood lots a single line of Barb Wire attached to trees, will turn large stock. Although there is but a single line it will be found very strong, and the cattle soon learn to keep away from it and cannot harm themselves by contact with it.

One line of Barb Wire at the bottom of a rail fence will prevent the invasion of swine, and in some parts of the country this is an extremely important advantage, easily reached by the land owner, who may make his common brush or pole fences in this way

### **Hog Proof.**

A single line of Barb Wire at the top of the orchard or nursery fence gives perfect protection against trespassers and fruit thieves. A single hoop or line of Barb Wire around blooming plants, or the gardener's beds, keeps away the nuisance of dogs.

### **TWO LINES OF BARB WIRE,**

attached to posts or trees, will make a fence sufficient to turn and restrain all large cattle.

### **THREE LINES OF BARB WIRE,**

are the average number in use for common stock, and may be attached to posts or trees. In the latter case it is better to attach a slat or block to the tree to carry the wire, which is thus less likely to be overgrown by the bark.

### **FOUR LINES OF BARB WIRE**

may be accepted as the standard and usual Barb Fence of the best and most universal character. It as in the above made suggestion, a light board or pole is added just below the top wire, the fence will be most acceptable to some farmers, who insist that they desire a **more visible** fence, although it is well established that the dumb animals are quick to see and avoid whatever may harm them.

# PLAIN TWIST

—AND—

# RIBBON.



WE are some-  
times asked for  
a fencing with-  
out barbs, and to  
meet such de-  
mand, we make  
three kinds.



- C.*—2 wires of No. 12 Gauge, twisted,  
*D.*—3 “ “ No. 12 or 13 Gauge.  
*E.*—“ Ribbon ” a twisted steel strip, well  
galvanized  $\frac{3}{8}$  inch wide, and is very  
suitable for fences around orchards,  
pleasure grounds, &c.



“E” OR “THORN”

## RIBBON FENCING.



This fencing is made of a solid flat slip of steel neatly twisted and well galvanized, presenting the largest possible surface to view.

Although no part of it is made of wire, it is no heavier and as cheap.

This make of fencing does not and never will take the place of Barb-Wire Fencing, but is preferred by some, principally as a top strand, being more easily seen. Our make will be known distinctively as the

“Lyman Thorn.”

and will be shipped in large or small quantities as may be desired.

The ‘Lyman’ is the **ONLY** ribbon fencing made in Canada, and is much superior to the imported fencing of the same description.

*In building Barb-Wire Fencing, carefully  
note these directions.*

Brace your end and corner posts securely, it will be necessary to do this to ensure a staunch, trim fence.

The distance between the posts varies with the views of the farmers, but it is not wise to have them too far apart if you wish your fence to be presentable and stand well. One rod apart is the usual distance,

Set your post firmly in the ground in all cases where you desire a staunch and permanent fence, as in no other way can they be kept in line and carry the wire in good trim. The cut on page 10 shows the manner of handling the reel of wire, but it is subject to all variety of ingenious expedients at the command of the farmers and their helpers.

Put the top line of fencing first, fastening the end securely to your well braced end post. Carry the reel along the line of fence, the strand unreeling as you go, to such distance as you desire, before getting the strain on the wire, this distance varying with the views and strength of the fence builder. If stretched into place every two hundred feet, the fence can be put up with neat rapidity. Two men and a boy can put up half a mile of fence a day, after the posts are set.

Securely fasten it at the point where the strain is made, and then go back and staple the wire to all intermediate posts.

Drive your staples well into the posts. Galvanized staples should always be used with the galvanized wire. When the posts are wide apart the wire may be kept in place in the spaces between by a slat, or picket stapled on the wires between, and this need not be firmly set in the ground.

## Note the Difference.

Comparative cost of Forty Rods of different kinds of  
Fence.

### THREE BOARDS.

1000 feet Pine Fencing, at \$15 per M.....	\$15 00
80 Posts, at 20 cents each.....	16 00
15 lbs. Nails, at 4 cents per pound.....	60
Labor.....	2 50

\$34 10

*or 85 cents per rod.*

### THREE BARBED WIRES.

132lbs Metallic Fencing, at 7 cents.....	\$9 24
40 Posts at 20 cents.....	8 00
2 lbs. Staples (Galvanized), at 8 cents.....	16
Labor.....	50

\$17 90

*or 45 cents per rod.*

### FOUR BOARDS.

1350 feet Pine Fencing, at \$15 per M.....	\$20 25
80 Posts, at 20 cents.....	16 00
20 lbs. Nails, at 4 cents per pound.....	80
Labor.....	3 00

\$40 05

*or \$1.00 per rod.*

### FOUR BARBED WIRES.

176 lbs. Metallic Fencing, at 7 cents.....	\$12 32
40 Posts, at 20 cents.....	8 00
3 lbs. Staples at 8 cents.....	24
Labor.....	75

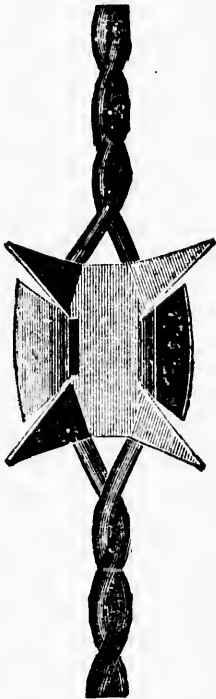
\$21 31

*or 53¼ cents per rod.*

# TABLET FENCING.



This fencing has a large sale in the United States where it is preferred by some, on account of its presenting a large surface to the view and easily seen, used alternately with



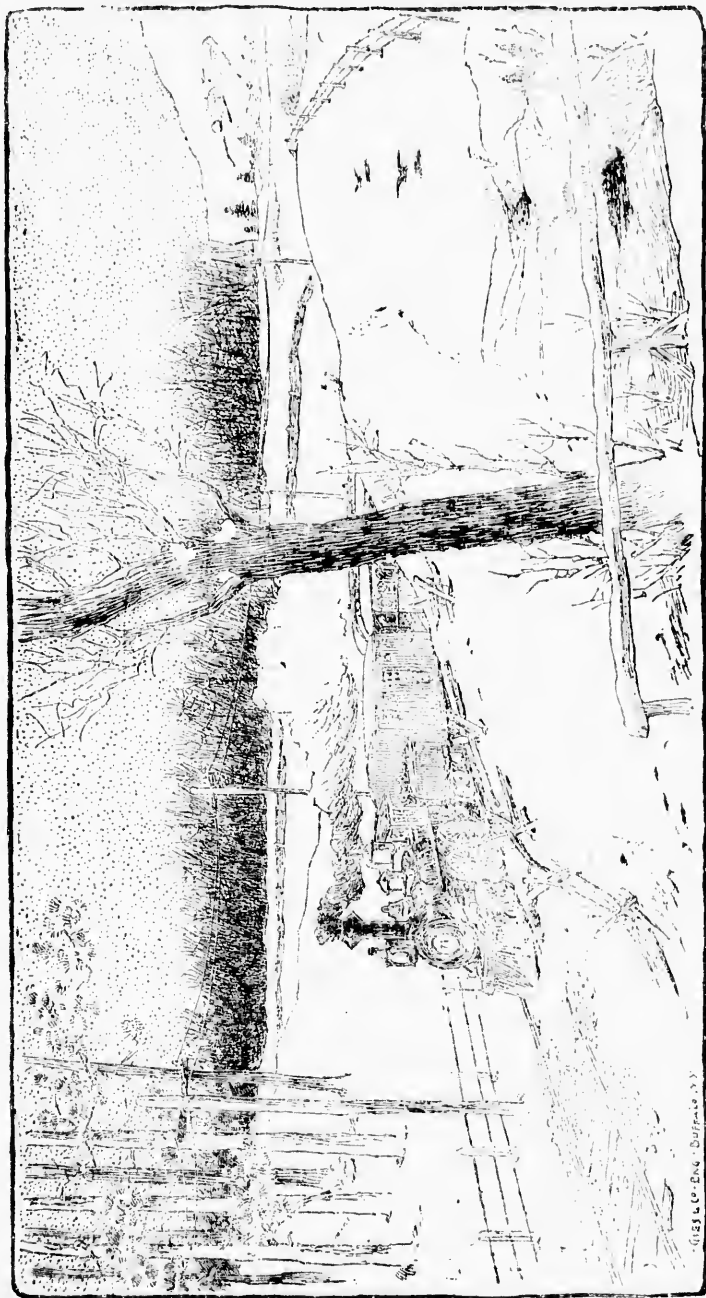
## BARB WIRE

it makes a thorough fence, being a complete barrier. This is also made in two sizes:—

**J.**—Tablet 1 inch and 5 inches apart.

**K.**— “ 1½ “ “ 9 “ “

*We anticipate a very large sale of this fencing when known, and we ask a trial so that persons intending to fence, may see for themselves.*

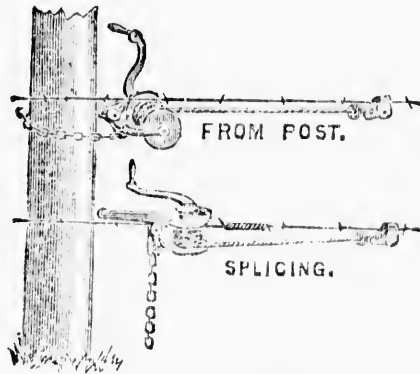


SHOWING BARB-WIRE AND ORDINARY RAIL FENCE IN WINTER..

## TABLE OF WEIGHTS.

GALVANIZED.	1 Rod 16 1/2 Feet.		1 Acre 165 feet.		1 Mile. 5,280 feet.	
	1 Strand.	2 Strand.	1 Strand.	2 Strand.	1 Strand.	2 Strand.
	ounces.	lbs.	lbs.	lbs.	lbs.	lbs.
A—4 barbs, 6 inches.....	17 1/4	2 3/8	11	22	352	704
B—4 " 4 " .....	19 1/2	2 1/8	12	24	384	768
C—Plain Twist, 2 wires.....	15	1 7/8	9	18	288	576
D— " 3 " .....	22 1/2	2 1/8	14	28	448	896
E—Thorn .....	27 1/2	3 1/8	17	34	544	1088
F—Twisted Strip.....	19 1/2	2 1/8	12	24	384	768
G—2 barbs, 5 inches.....	17 1/2	2 3/8	11	22	352	704
H—2 " 2 1/8 " .....	19 1/2	2 1/8	12	24	384	768
J—Tablet, 1 inch.....	27	3 3/8	17	34	540	1080
K— " 1 1/2 " .....	27	3 3/8	17	34	540	1080

# THE GIANT STRETCHER.



125,000 of them sold in the United States, Season 1884.

## THE DOMINION BARB WIRE COMPANY

(Limited)

Have secured the Exclusive Manufacturing Right for Canada.

This Stretcher more than supplies the place of any other kind yet before the public, for fencing purposes. By a Self-Adjusting Slotted Latch, it may be used *either side up*, that is, on either side of the post or at either end of the wire; the crank only turns in one direction, because, if made to reverse, it would reverse the rope.

### HOW TO WORK IT.

Place the chain (or rope, if used,) around the post; hook the lip eccentric at the end of the rope to the wire, then wind. (A little child, with it in this way will break any wire.)

**For Splicing**—Place one end of the wire under the lip eccentric on the frame, and the other end to the lip eccentric at the end of the rope; then wind and splice.

**For Stretching**—It can't be beat n.

The chain as used in the "Giant" is far superior to a hook fastened to the post at one side, because, if the ground should be any way damp, the strain being from the hook at the post's side, has a tendency to *loosen* and *turn* the post. The chain, however, holds the "Giant" to the post.

It is not necessary to hold it up with one hand, when you start to turn windlass with the other.

**Three sizes. GIANT.**

**LITTLE GIANT.**

**LITTLE GIANT JUNIOR**

*Send for sample and satisfy yourself.*



**ECLIPSE**  
**POST AUGER**

BEST  
**Earth Auger.**  
IN THE WORLD.

**STRONG,**  
**DURABLE,**  
AND  
**CHEAP.**

*Adapted to any kind  
of Ground.*

Will work anywhere that any  
other digger will work.

FOR SALE BY  
**DOMINION BARB WIRE COY.**  
LIMITED.

The Only Machine adjustable  
so as to bore different  
sizes of holes

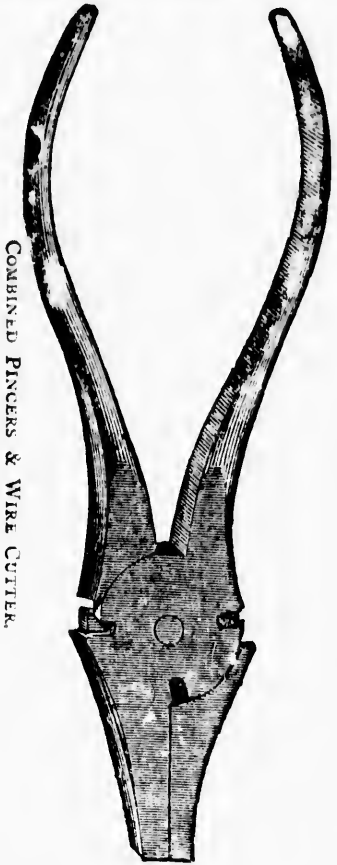
THE ONLY MACHINE  
IN WHICH  
**The Cut can be Regulated**  
FOR  
**HARD OR SOFT GROUND.**

*Every Machine is warranted  
in every respect.*

We have numerous and  
very flattering testimonials  
of the utility of the Machine,  
and the rapid and thorough  
manner in which it does its  
work; and we, ourselves,  
have bored three feet in *one  
minute.* With the improve-  
ments we have made on it,  
the heads cannot be broken;  
and we only ask a trial of  
the machine to make good  
our claims.

Send for a Sample with your  
first order for Barb Wire.





COMBINED PINCERS & WIRE CUTTER.



COMBINED STRETCHER & CROW-BAR.

**COMBINED PINCERS & WIRE CUTTER.**

Made of tempered Cast-Steel, and are indispensable in handling Barbed Fencing Wire. Length, 10 inches.

**COMBINED STRETCHER & CROW-BAR.**

It is made of a solid bar of round steel, one inch in diameter and four feet long; it is sharpened and tempered at one end for use as a crow-bar or tamping iron, and 15 inches from the end it has, as shown in the cut, a **BUTTON** or **CAM**, working in a cut or depression in the bar, so that wire being laid on, and power applied to it, as shown in the larger cut, the line of wire can be easily strained up taut. The harder one pulls the tighter the wire holds. This tool can also be used to handle the spools with, being thrust through the centre so that the wire can be unwound. Weight only 12 pounds.

THE  
↳ **LYMAN BARB WIRE** ◀

HAS BEEN USED UPON THE

*Following Railways in Canada :*

**Canada Atlantic Railway.  
Canadian Pacific Railway.  
Central Ontario Railway.  
Central Vermont Railway.  
Erie & Huron Railway.  
Fredericton Railway.  
Grand Junction Railway.  
Grand Trunk Railway.  
Great Western Railway.  
Halifax & Cape Breton Railway.  
Intercolonial Railway.  
International Railway.  
Kent Northern Railway.  
Kingston & Pembroke Railway.  
Manitoba and North-Western Railway.  
Michigan Central Railway.  
Midland Railway.  
Montreal & Sorel Railway.  
Northern & North-Western Railway.  
North Shore Railway.  
Ontario & Quebec Railway.  
Pontiac & Pacific Junction Railway.  
Prince Edward Island Railway.  
Quebec & Lake St. John Railway.  
Quebec Central Railway.  
South Eastern Railway.  
Waterloo & Magog Railway.  
Western Counties Railway.  
Windsor & Annapolis Railway.**

Thereby acknowledging the superiority of **LYMAN BARB** over all other styles of BARBED FENCING.

See that our Trade Mark, "LYMAN BARB," is upon each coil, and take no other. We have Agents in all the principal towns.

**Dominion Barb Wire Co. (Limited)**

**WORKS AT LACHINE.**

*25 Front St. East,*

**TORONTO.**

*44 Foundling Street,*

**MONTREAL.**



THE NEW  
"Lyman" Ribbon  
FENCING.

NO BARBS,  
STRONG,  
EFFECTIVE.

*Made only by the*

DOMINION BARB-WIRE CO.

(LIMITED)

MONTREAL.

4-BARR.



2-BARR.



THORN.



THE CELEBRATED  
"LYMAN"  
Steel Fencing

MADE ONLY BY

Dominion Barb Wire Co.  
(Limited)

MONTREAL.

**IS FOR SALE BY**



**J. Senesac,**

STANBRIDGE STATION.



