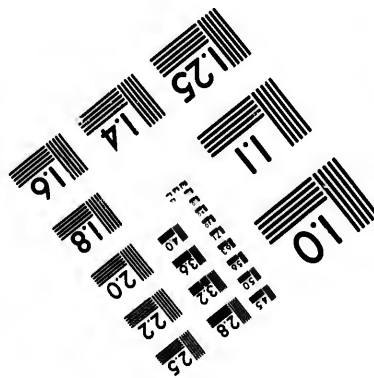
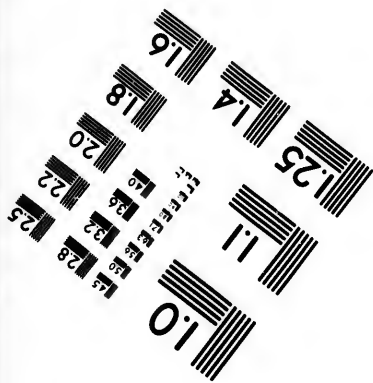
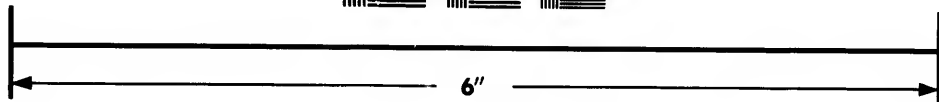
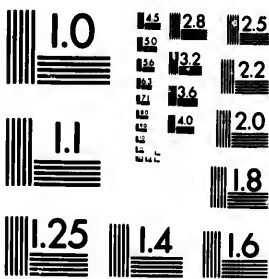


**IMAGE EVALUATION  
TEST TARGET (MT-3)**



**Photographic  
Sciences  
Corporation**

23 WEST MAIN STREET  
WEBSTER, N.Y. 14580  
(716) 872-4503

1.5 1.8 2.0 2.2 2.5  
2.8 3.2 3.6 4.0

**CIHM/ICMH  
Microfiche  
Series.**

**CIHM/ICMH  
Collection de  
microfiches.**



Canadian Institute for Historical Microreproductions / Institut canadien de microreproductions historiques

**© 1987**

1.0

Technical and Bibliographic Notes/Notes techniques et bibliographiques

The Institute has attempted to obtain the best original copy available for filming. Features of this copy which may be bibliographically unique, which may alter any of the images in the reproduction, or which may significantly change the usual method of filming, are checked below.

L'Institut a microfilmé le meilleur exemplaire qu'il lui a été possible de se procurer. Les détails de cet exemplaire qui sont peut-être uniques du point de vue bibliographique, qui peuvent modifier une image reproduite, ou qui peuvent exiger une modification dans la méthode normale de filmage sont indiqués ci-dessous.

- |  |  |
|--|--|
| <input type="checkbox"/> Coloured covers/<br>Couverture de couleur   | <input type="checkbox"/> Coloured pages/<br>Pages de couleur   |
| <input type="checkbox"/> Covers damaged/<br>Couverture endommagée  | <input type="checkbox"/> Pages damaged/<br>Pages endommagées   |
| <input type="checkbox"/> Covers restored and/or laminated/<br>Couverture restaurée et/ou pelliculée  | <input type="checkbox"/> Pages restored and/or laminated/<br>Pages restaurées et/ou pelliculées  |
| <input type="checkbox"/> Cover title missing/<br>Le titre de couverture manque   | <input checked="" type="checkbox"/> Pages discoloured, stained or foxed/<br>Pages décolorées, tachetées ou piquées   |
| <input type="checkbox"/> Coloured maps/<br>Cartes géographiques en couleur   | <input checked="" type="checkbox"/> Pages detached/<br>Pages détachées   |
| <input type="checkbox"/> Coloured ink (i.e. other than blue or black)/<br>Encre de couleur (i.e. autre que bleue ou noire)   | <input checked="" type="checkbox"/> Showthrough/<br>Transparence   |
| <input type="checkbox"/> Coloured plates and/or illustrations/<br>Planches et/ou illustrations en couleur  | <input type="checkbox"/> Quality of print varies/<br>Qualité inégale de l'impression   |
| <input type="checkbox"/> Bound with other material/<br>Relié avec d'autres documents   | <input type="checkbox"/> Includes supplementary material/<br>Comprend du matériel supplémentaire   |
| <input type="checkbox"/> Tight binding may cause shadows or distortion<br>along interior margin/<br>La reliure serrée peut causer de l'ombre ou de la<br>distorsion le long de la marge intérieure   | <input type="checkbox"/> Only edition available/<br>Seule édition disponible   |
| <input type="checkbox"/> Blank leaves added during restoration may<br>appear within the text. Whenever possible, these<br>have been omitted from filming/<br>Il se peut que certaines pages blanches ajoutées<br>lors d'une restauration apparaissent dans le texte,<br>mais, lorsque cela était possible, ces pages n'ont<br>pas été filmées. | <input type="checkbox"/> Pages wholly or partially obscured by errata<br>slips, tissues, etc., have been refilmed to<br>ensure the best possible image/<br>Les pages totalement ou partiellement<br>obscurcies par un feuillet d'errata, une pelure,<br>etc., ont été filmées à nouveau de façon à<br>obtenir la meilleure image possible. |
- Additional comments:/ [Printed ephemera] 1 sheet (verso blank)  
Commentaires supplémentaires:

This item is filmed at the reduction ratio checked below/  
Ce document est filmé au taux de réduction indiqué ci-dessous.

10X	14X	18X	22X	26X	30X
<input type="checkbox"/>	<input type="checkbox"/>	<input type="checkbox"/>	<input checked="" type="checkbox"/>	<input type="checkbox"/>	<input type="checkbox"/>
12X	16X	20X	24X	28X	32X

The copy filmed here has been reproduced thanks to the generosity of:

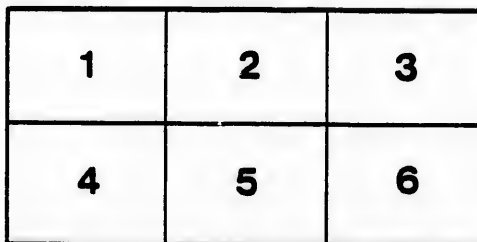
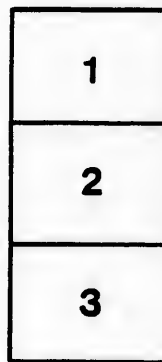
Manuscript Division  
Public Archives of Canada

The images appearing here are the best quality possible considering the condition and legibility of the original copy and in keeping with the filming contract specifications.

Original copies in printed paper covers are filmed beginning with the front cover and ending on the last page with a printed or illustrated impression, or the back cover when appropriate. All other original copies are filmed beginning on the first page with a printed or illustrated impression, and ending on the last page with a printed or illustrated impression.

The last recorded frame on each microfiche shall contain the symbol  $\rightarrow$  (meaning "CONTINUED"), or the symbol  $\nabla$  (meaning "END"), whichever applies.

Maps, plates, charts, etc., may be filmed at different reduction ratios. Those too large to be entirely included in one exposure are filmed beginning in the upper left hand corner, left to right and top to bottom, as many frames as required. The following diagrams illustrate the method:



L'exemplaire filmé fut reproduit grâce à la générosité de:

Division des manuscrits  
Archives publiques du Canada

Les images suivantes ont été reproduites avec le plus grand soin, compte tenu de la condition et de la netteté de l'exemplaire filmé, et en conformité avec les conditions du contrat de filmage.

Les exemplaires originaux dont la couverture en papier est imprimée sont filmés en commençant par le premier plat et en terminant soit par la dernière page qui comporte une empreinte d'impression ou d'illustration, soit par le second plat, selon le cas. Tous les autres exemplaires originaux sont filmés en commençant par la première page qui comporte une empreinte d'impression ou d'illustration et en terminant par la dernière page qui comporte une telle empreinte.

Un des symboles suivants apparaîtra sur la dernière image de chaque microfiche, selon le cas: le symbole  $\rightarrow$  signifie "A SUIVRE", le symbole  $\nabla$  signifie "FIN".

Les cartes, planches, tableaux, etc., peuvent être filmés à des taux de réduction différents. Lorsque le document est trop grand pour être reproduit en un seul cliché, il est filmé à partir de l'angle supérieur gauche, de gauche à droite, et de haut en bas, en prenant le nombre d'images nécessaire. Les diagrammes suivants illustrent la méthode.

# Sale of Clergy

IN THE

## WESTERN

The undermentioned Clergy  
**COUNTY of KENT**, in the West  
 for Sale, by Auction, at *Chatham*,  
 Tuesday, the Seventh day of June  
 first Tuesday in July, August, Septe  
 at the upset price of 10s. Currency

☞ The terms of payment, one-t  
 in nine equal annual instalments, wit  
 as it becomes due.

### TILBURY, WEST,

2nd Con.	Nos. 6, 12,
3d do.	2, 15,
4th do.	6, 12, 20.
5th do.	2.
6th do.	6.
8th do.	6, 12, 20.
9th do.	2, 15.
10th do.	6, 12.
11th do.	2, 8, 15.

### TILBURY, EAST,

3rd Con.	No. 5.
4th do.	3, 8.
5th do.	5, 14.
6th do.	3, 8.
7th do.	5, 9, 17.
8th do.	3, 8.
9th do.	5, 22.
10th do.	3.
12th do.	10.
14th do.	3, 8, 10.
15th do.	9.
16th do.	3.

### ORFORD,

1st Con.	Nos. 1, 2, 3,
2nd do.	1, 2, 3,
3rd do.	1, 2, 3.
South side of	{ S ½ 10, S
Middle Road,	{ 14, S ha
North side of	{ N ½ 10,
Middle Road,	{ 13, N ha
4th Con.	4, 5, 6,
5th do.	3.
6th do.	3, 4, 5,

### CAMDEN,

3rd Con.	Nos. 2, 3, 4.
4th do.	2, 3, 4,

### CHATHAM

4th Con.	No. 11.
5th do.	8, 9, 10,
6th do.	8, 9, 10,
7th do.	8, 10, 12
8th do.	9, 11, 12
9th do.	8, 10, 12
10th do.	8, 10, 12
11th do.	8, 9, 12
12th do.	10, 11,

### DOVER.

1322

# ergy Reserves,

IN THE

# AN DISTRICT.

**ed Clergy Reserves, in the**  
the **Western District**, will be offered  
**Chatham, in the Western District, on**  
**of June 1836; and afterwards on the**  
**ust, September, and October following,**  
**urrency per acre.**  
**ent, one-tenth down, and the remainder**  
**ments, with interest on each instalment**

**ORFORD,**  
n. Nos. 1, 2, 3, 4.  
b. 1, 2, 3, 6.  
b. 1, 2, 3.  
de of { S  $\frac{1}{2}$  10, S half 12, S half  
Road, { 14, S half 16, S half 17.  
de of { N  $\frac{1}{2}$  10, N  $\frac{1}{2}$  12, N half  
Road, { 13, N half 16, N part 18.  
n. 4, 5, 6, 7, 8.  
b. 3.  
b. 3, 4, 5, 6.

**CAMDEN,**  
n. Nos. 2, 3, 4.  
b. 2, 3, 4, 5, SW half 6.

**CHATHAM,**  
n. No. 11.  
b. 8, 9, 10, 11, 12.  
b. 8, 9, 10, 11, 12.  
b. 8, 10, 12.  
b. 9, 11, 12.  
b. 8, 10, 12.  
b. 8, 10, 12.  
b. 8, 9, 12.  
b. 10, 11, 12.

**DOVER.**

**ZONE.**  
2nd Con. Nos. 20, 27.  
4th do. 20, 33.  
5th do. 25, W half 31.  
6th do. 20, 27.  
7th do. 25, 31.  
8th do. 20, 27.  
9th do. 25, 31.  
10th do. 27, 33.  
11th do. 15, 31.

**BROOKE,**  
1st Con. Nos. 10, 17.  
2nd do. 20, 22.  
3rd do. 10, 17.  
4th do. 16, 20, 22.  
5th do. 10, 17.  
6th do. 20, 22.  
7th do. 17, 27.  
8th do. 20, 22.  
9th do. 17, N half 27.  
10th do. 20, 22.  
11th do. 10, 17, 27.  
12th do. 20, 22.  
14th do. 16, 20, 22.

**ENNISKILLEN**

6th do.	3, 8.
7th do.	5, 9, 17.
8th do.	3, 8.
9th do.	5, 22.
10th do.	3.
12th do.	10.
14th do.	3, 8, 10.
15th do.	9.
16th do.	3.

**ROMNEY,**

3rd Con.	Nos. 12, 16.
4th do.	10, 17.
5th do.	12, 25.
6th do.	17.

**RALEIGH,**

Gore A,	Nos. 7, 9, 11, 12.
8th Con.	6, 8, 9, 10, 12.
9th do.	6, 7, 8, 9.
10th do.	6, 7, 8, 9.
11th do.	N. $\frac{1}{2}$ 6, N. $\frac{1}{2}$ 7, N. $\frac{1}{2}$ 12.
12th do.	{ S. half 9, S. half 10, S. half 11, S. half 12.
13th do.	6, 7, 8, 9.
14th do.	6, 7, 8, 9, 10, 12.

**HARWICH,**

7th Con.	Nos. N.W. $\frac{1}{2}$ 15, N.W. $\frac{2}{3}$ 18.
8th do.	13, 14, 15, 16, 18.
9th do.	13, 14, 16, 17, 18.
10th do.	15, 16, 17, 18.
11th do.	13, 14, 15, S. $\frac{1}{2}$ 16, 17.
12th do.	15, 16, S. $\frac{1}{2}$ 17, 18.
13th do.	{ N. half 14, N. half 15, S. half 16.

**HOWARD,**

Road between	{ NE $\frac{1}{2}$ 3, NE $\frac{1}{2}$ 9, NE
Howard & Harwich	{ $\frac{1}{2}$ 13, NE $\frac{1}{2}$ 17.
Gore between the	{
2nd & 3rd Con.	{ Nos 4, 7, 8.
3rd Con.	Nos. 7, 8, 9.
4th do.	6, 7, 8, 9.
5th do.	5, 7, 8.
6th do.	5, 6.
7th do.	5, 7, 8.
8th do.	5, 6.
9th do.	{ NW half 5, NW half 6,
	{ NW half 8.
10th do.	SE half 5, SE half 7.

4th Con.	No. 11.
5th do.	8, 9, 10,
6th do.	8, 9, 10,
7th do.	8, 10, 12.
8th do.	9, 11, 12.
9th do.	8, 10, 12.
10th do.	8, 10, 12.
11th do.	8, 9, 12.
12th do.	10, 11, 12.

**DOVER.**

5th Con.	Nos. 6, 7, 8, 9.
6th do.	6, 7, 8, 9.
7th do.	6, 7, 8, 9.
8th do.	{ 6, SW $\frac{1}{4}$
	{ 10, 11, 12.
9th do.	{ NW $\frac{1}{4}$ 8
	{ 10, 11, 12.
10th do.	{ 6, 7, SE
	{ 9, 10, 11.
11th do.	6, 7, 8, 9.

**SOMBRA.**

1st Con.	Nos. 20, 26.
2nd do.	N half 4,
3rd do.	3, 10, 20.
4th do.	4, 19.
5th do.	A, 3, 10.
6th do.	C, 4, 11.
7th do.	3, 10.
8th do.	C, 4, 11.
9th do.	A, 3, 10.
10th do.	1, 4, 19.
11th do.	3, 20.
12th do.	1, 4, 11.
13th do.	3, 10, 20.
14th do.	11, 19, 20.
15th do.	10, 20, 26.

**DAWN.**

1st Con.	Nos. 8, 15.
2nd do.	6, 12.
3rd do.	2, 8, 15.
4th do.	6, 12.
5th do.	2, 15.
6th do.	12, 20.
7th do.	8, 15, 20.
8th do.	12, 20.
9th do.	2, 8, 15.
10th do.	12, 20.
11th do.	2, 8, 15.
12th do.	12, 20.
13th do.	15, 25.
14th do.	6, 27.

No. 11.  
 8, 9, 10, 11, 12.  
 8, 9, 10, 11, 12.  
 8, 10, 12.  
 9, 11, 12.  
 8, 10, 12.  
 8, 10, 12.  
 8, 9, 12.  
 10, 11, 12.

**DOVER.**

Nos. 6, 7, 8, 9, 10, 11, 12.  
 6, 7, 8, 9, 10, 11, 12.  
 6, 7, 8, 9, 10, 11, 12.  
 { 6, SW  $\frac{1}{4}$  8, NE  $\frac{1}{4}$  8, 9,  
 10, 11, 12.  
 { NW  $\frac{1}{4}$  8, SE  $\frac{1}{4}$  8, 9,  
 10, 11, 12.  
 { 6, 7, SE  $\frac{1}{4}$  8, N half 8,  
 9, 10, 11, 12.  
 6, 7, 8, 9, 10, 11, 12.

**SOMBRA.**

Nos. 20, 26.  
 N half 4, 25.  
 3, 10, 20, 26.  
 4, 19.  
 A, 3, 10.  
 C, 4, 11.  
 3, 10.  
 C, 4, 11.  
 A, 3, 10.  
 1, 4, 19.  
 3, 20.  
 1, 4, 11.  
 3, 10, 20.  
 11, 19, 25.  
 10, 20, 26.

**DAWN.**

Nos. 8, 15.  
 6, 12.  
 2, 8, 15.  
 6, 12.  
 2, 15.  
 12, 20.  
 8, 15, 25.  
 12, 20.  
 2, 8, 15.  
 12, 20.  
 2, 8, 15.  
 12, 20.  
 15, 25.  
 6, 27.

5th do. 10, 17.  
 6th do. 20, 22.  
 7th do. 17, 27.  
 8th do. 20, 22.  
 9th do. 17, N half 27.  
 10th do. 20, 22.  
 11th do. 10, 17, 27.  
 12th do. 20, 22.  
 14th do. 16, 20, 22.

**ENNISKILLEN.**

1st Con. Nos. 6, 16.  
 2nd do. 4, 11.  
 4th do. 4, 19.  
 6th do. 4, 11.  
 8th do. 4, 19.  
 9th do. 6, 16.  
 10th do. 11, 19.  
 12th do. 4, 11.  
 14th do. 4, 11, 19, 25.

**MOORE,**

2nd Con. Nos. 12, 20.  
 3rd do. 8, 25,  
 4th do. 27.  
 5th do. 2.  
 6th do. 6, 12.  
 7th do. 25.  
 12th do. 12, 20.

**PLYMPTON.**

Front Con. No. 39.  
 2nd do. 6, 12, 20.  
 3rd do. 2, 8.  
 6th do. 6, 12, 20.  
 7th do. 15, 25.  
 8th do. 12, 20.  
 10th do. 20, 27.  
 11th do. 15, 25.  
 12th do. 20.  
 14th do. 20.

**WARWICK,**

South side of the }  
 Egremont Road, } No. 2.  
 1st Con. }  
 2nd do. Nos. 12, 27.  
 3rd do. 2, 15.  
 4th do. 6, 12, 20.  
 North side of do. }  
 1st Con. } No. 20.  
 2nd do. Nos. 15, 25.  
 3rd do. 6, 12, 20.  
 4th do. 8, 15, 25.  
 6th do. 8, 15.



