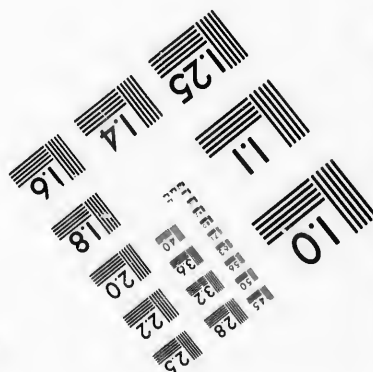
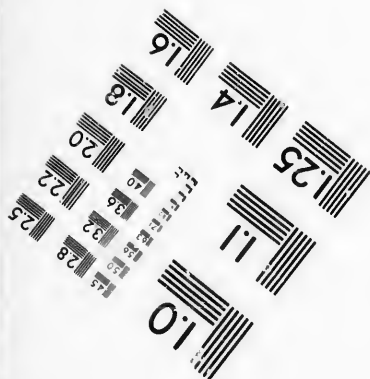
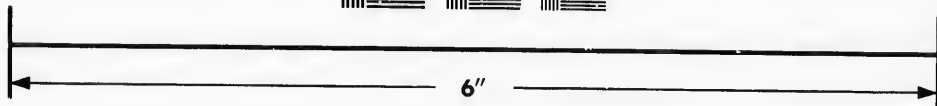
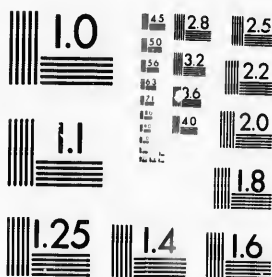


**IMAGE EVALUATION
TEST TARGET (MT-3)**



**Photographic
Sciences
Corporation**

23 WEST MAIN STREET
WEBSTER, N.Y. 14580
(716) 872-4503

**CIHM/ICMH
Microfiche
Series.**

**CIHM/ICMH
Collection de
microfiches.**



Canadian Institute for Historical Microreproductions / Institut canadien de microreproductions historiques

© 1987

Technical and Bibliographic Notes/Notes techniques et bibliographiques

The Institute has attempted to obtain the best original copy available for filming. Features of this copy which may be bibliographically unique, which may alter any of the images in the reproduction, or which may significantly change the usual method of filming, are checked below.

L'Institut a microfilmé le meilleur exemplaire qu'il lui a été possible de se procurer. Les détails de cet exemplaire qui sont peut-être uniques du point de vue bibliographique, qui peuvent modifier une image reproduite, ou qui peuvent exiger une modification dans la méthode normale de filmage sont indiqués ci-dessous.

Coloured covers/
Couverture de couleur

Covers damaged/
Couverture endommagée

Covers restored and/or laminated/
Couverture restaurée et/ou pelliculée

Cover title missing/
Le titre de couverture manque

Coloured maps/
Cartes géographiques en couleur

Coloured ink (i.e. other than blue or black)/
Encre de couleur (i.e. autre que bleue ou noire)

Coloured plates and/or illustrations/
Planches et/ou illustrations en couleur

Bound with other material/
Relié avec d'autres documents

Tight binding may cause shadows or distortion along interior margin/
La reliure serrée peut causer de l'ombre ou de la distorsion le long de la marge intérieure

Blank leaves added during restoration may appear within the text. Whenever possible, these have been omitted from filming/
Il se peut que certaines pages blanches ajoutées lors d'une restauration apparaissent dans le texte, mais, lorsque cela était possible, ces pages n'ont pas été filmées.

Additional comments:/
Commentaires supplémentaires:

[Printed ephemera] 4 p.

Coloured pages/
Pages de couleur

Pages damaged/
Pages endommagées

Pages restored and/or laminated/
Pages restaurées et/ou pelliculées

Pages discoloured, stained or foxed/
Pages décolorées, tachetées ou piquées

Pages detached/
Pages détachées

Showthrough/
Transparence

Quality of print varies/
Qualité inégale de l'impression

Includes supplementary material/
Comprend du matériel supplémentaire

Only edition available/
Seule édition disponible

Pages wholly or partially obscured by errata slips, tissues, etc., have been refilmed to ensure the best possible image/
Les pages totalement ou partiellement obscurcies par un feuillet d'errata, une pelure, etc., ont été filmées à nouveau de façon à obtenir la meilleure image possible.

This item is filmed at the reduction ratio checked below/
Ce document est filmé au taux de réduction indiqué ci-dessous.

10X	12X	14X	16X	18X	20X	22X	24X	26X	28X	30X	32X
								J			

The copy filmed here has been reproduced thanks to the generosity of:

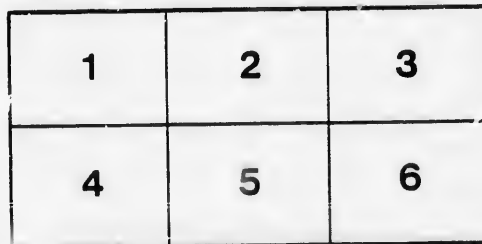
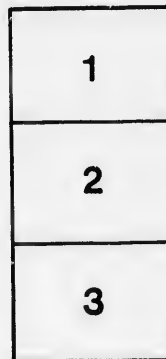
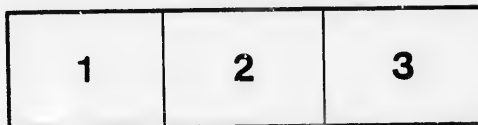
New Brunswick Museum
Saint John

The images appearing here are the best quality possible considering the condition and legibility of the original copy and in keeping with the filming contract specifications.

Original copies in printed paper covers are filmed beginning with the front cover and ending on the last page with a printed or illustrated impression, or the back cover when appropriate. All other original copies are filmed beginning on the first page with a printed or illustrated impression, and ending on the last page with a printed or illustrated impression.

The last recorded frame on each microfiche shall contain the symbol \rightarrow (meaning "CONTINUED"), or the symbol ∇ (meaning "END"), whichever applies.

Maps, plates, charts, etc., may be filmed at different reduction ratios. Those too large to be entirely included in one exposure are filmed beginning in the upper left hand corner, left to right and top to bottom, as many frames as required. The following diagrams illustrate the method:



L'exemplaire filmé fut reproduit grâce à la générosité de:

New Brunswick Museum
Saint John

Les images suivantes ont été reproduites avec le plus grand soin, compte tenu de la condition et de la netteté de l'exemplaire filmé, et en conformité avec les conditions du contrat de filmage.

Les exemplaires originaux dont la couverture en papier est imprimée sont filmés en commençant par le premier plat et en terminant soit par la dernière page qui comporte une empreinte d'impression ou d'illustration, soit par le second plat, selon le cas. Tous les autres exemplaires originaux sont filmés en commençant par la première page qui comporte une empreinte d'impression ou d'illustration et en terminant par la dernière page qui comporte une telle empreinte.

Un des symboles suivants apparaîtra sur la dernière image de chaque microfiche, selon le cas: le symbole \rightarrow signifie "A SUIVRE", le symbole ∇ signifie "FIN".

Les cartes, planches, tableaux, etc., peuvent être filmés à des taux de réduction différents. Lorsque le document est trop grand pour être reproduit en un seul cliché, il est filmé à partir de l'angle supérieur gauche, de gauche à droite, et de haut en bas, en prenant le nombre d'images nécessaire. Les diagrammes suivants illustrent la méthode.

rata
o

elure.
à

32X

May 4 THE 1954
 NEW BRUNSWICK
 MUSEUM

NOTE.—As the whole of the Woods set forth in this Catalogue will be offered in the Dining Room of the Brokers' Mahogany Sales Sheds, North Carriers' Dock, Liverpool, it will be necessary for Buyers to inspect the various parcels prior to the time of Sale.

FARNWORTH & JARDINE'S CATALOGUE

TO BE SOLD BY AUCTION,
On FRIDAY Next, the 24th OCTOBER, 1879,

During Dinner, say about TWO o'Clock,
IN THE DINING ROOM OF THE BROKERS' MAHOGANY SALES SHEDS,
NORTH CARRIERS' DOCK, LIVERPOOL,

In addition to the FURNITURE and FANCYWOODS, &c.,
 as particularized in a separate Catalogue,

34,414 Pieces 1st, 2nd, & 3rd Quality St. John SPRUCE DEALS,		contg. 1,106,958 sup. ft.
400	" 4th Qy. St. John SPRUCE DEALS,	11,280 "
2,909	" 6-inch DEALS,	63,514 "
4,022	" SPRUCE SCANTLING,	46,228 "
7,642	" BOARDS,	58,538 "
7,801	" DEAL ENDS,	72,810 "

Being the Cargo now landing on the Quay East Side Brocklebank Dock, ex "Hospodar," from St. John, N.B.

On account of the Importer.

NOTE.—Buyers will please note that the Cargo per "Hospodar" is of Mr. Gibson's well-known shipment, and entirely from the Nashwaak Mills, and of unusually long average lengths.

FOREIGN SPECIFICATION OF SPRUCE DEALS.

In.	Feet long																	
	26	25	24	23	22	21	20	19	18	17	16	15	14	13	12	11	10	9
3 x 11	—	17	55	99	171	280	461	751	894	795	654	206	164	187	144	201	79	160
3 x 9	1	10	52	120	201	323	558	975	1127	1378	1294	457	432	474	403	517	241	346
3 x 7	—	6	59	193	340	536	813	1304	1573	2044	2483	1788	1276	1384	1239	1209	618	671
2½ x 7	—	12	22	43	49	93	138	180	259	330	273	269	227	289	255	164	138	

LOTTING.

Lot	Pieces.	Cut for	Inches.
		16 feet & up.	3 x 11
2	400	16 "	"
3	400	16 "	"
4	400	16 "	"
5	400	16 "	"
6	400	16 "	"
7	400	16 "	"
8	400	16 "	"
9	400	16 "	"
10	577 more or less	16 "	"

L7. 51

SPRUCE DEALS, ex "Hospodar."

	Lot	Pieces.	Cut for	Inches.
6. 10/-	11	about 400	12 to 15 feet,	3 x 11
	12	301 more or less	12 ,, 15 ,,	,,
6. 0/-	13	440 more or less	9 ,, 11 ,,	,,
	14	500	16 feet & up.,	3 x 9
	15	500	16 ,,	,,
	16	500	16 ,,	,,
7. 2. 6	17	500	16 ,,	,,
	18	500	16 ,,	,,
	19	500	16 ,,	,,
	20	500	16 ,,	,,
	21	500	16 ,,	,,
	22	500	16 ,,	,,
7. 0/-	23	500	16 ,,	,,
	24	500	16 ,,	,,
	25	449 more or less	16 ,,	,,
6. 7. 6	26	600	12 to 15 feet,	,,
	27	600	12 ,, 15 ,,	,,
6. 5. 0	28	566 more or less	12 ,, 15 ,,	,,
5. 17. 6	29	600	9 ,, 11 ,,	,,
5. 17. 6	30	504	9 ,, 11 ,,	,,
	31	500	16 feet & up.,	3 x 7
	32	500	16 ,,	,,
6. 0/-	33	500	16 ,,	,,
	34	500	16 ,,	,,
	35	500	16 ,,	,,
5. 17. 6	36	500	16 ,,	,,
	37	500	16 ,,	,,
	38	500	16 ,,	,,
	39	500	16 ,,	,,
	40	500	16 ,,	,,
	41	500	16 ,,	,,
5. 15/-	42	500	16 ,,	,,
	43	500	16 ,,	,,
	44	500	16 ,,	,,
	45	500	16 ,,	,,
	46	500	16 ,,	,,

SPRUCE DEALS, ex "Hospodar."

	Lot	Pieces.	Cut for	Inches
	47	about 500	16 feet & up.,	3 x 7
5-13/-	48	500	16 "	"
	49	351 more or less	16 "	"
	50	600	12 to 15 feet,	"
5-15/-	51	600	12 ,, 15 "	"
	52	600	12 ,, 15 "	"
	53	600	12 ,, 15 "	"
	54	600	12 ,, 15 "	"
5-13/6	55	600	12 ,, 15 "	"
	56	600	12 ,, 15 "	"
	57	700	12 ,, 15 "	"
	58	787 more or less	12 ,, 15 "	"
	59	600	9 ,, 11 "	"
5-10/-	60	600	9 ,, 11 "	"
	61	600	9 ,, 11 "	"
	62	698 more or less	9 ,, 11 "	"
5-17-6	63	700	9 feet & up.,	2½ x 7
	64	700	9 "	"
5-12-6	65	700	9 "	"
	66	641 more or less	9 "	"
4th Quality DEALS.				
5-0/-	67	400	9 feet & up.,	7 & up.
6-inch DEALS.				
5-13/-	68	700	9 feet & up.,	2½ & 3 x 6
	69	700	9 "	"
5-13/6	70	700	9 "	"
	71	809 more or less	9 "	"
SPRUCE SCANTLING.				
5-0/-	72	1000	9 feet & up.,	2½ & 3 x 5 & under.
	73	1000	9 "	"
	74	1000	9 "	"
5-28	75	1022 more or less	9 "	"
BOARDS.				
	76	1500		
5-0/-	77	1500		
	78	1500		
	79	1500		
	80	1642 more or less		

DEAL ENDS, ex "Hospodar."

Lot	Pieces.
81	abt. 1000
82	1000
83	1000
84	1000
85	1060
86	1000
87	1000
88	801 more or less

6,240 Pieces 3rd Quality Quebec PINE DEALS (2 inches),
just landed on the Quay, North East Side of Canada Dock,
ex "Cyprus," from Quebec.

On account of the Importer.

FOREIGN SPECIFICATION.

Inches.	Feet long.				
	13	12	11	10	9
2 x 11	—	—	186	200	177
2 x 10	8	14	19	6	6
2 x 9	—	—	282	223	153
2 x 8	363	491	260	211	103
2 x 7	792	1298	552	508	397

LOTTING.

Lot	Pieces.	Cut for	Inches.
1	about 563	9 to 11 feet,	2 x 11
2	658	9 ,, 11 ,,	2 x 9
3	53 363	9 ,, 13 ,, 13 feet,	2 x 10 2 x 8
	416		
4	491	12 ,,	"
5	574	9 to 11 feet,	"
6	792	13 feet,	2 x 7
7	600	12 ,,	"
8	698 more or less	12 ,,	"
9	700	9 to 11 feet,	"
10	757 more or less	9 ,, 11 ,,	"

426 Logs Dalhousie BIRCH, containing about 6,500 feet,
8 Log Ends BIRCH,
Just landed on the Quay, East Side Canada Dock, ex "Annabella,"
from Dalhousie.

On account of the Importers.

LOTTING.
BIRCH.

Lot	Logs.	Inches deep.
1	about 12 more or less	18 & up.
2	16	17 & under 18
3	16	16 ,, 17
4	18 more or less	16 ,, 17

