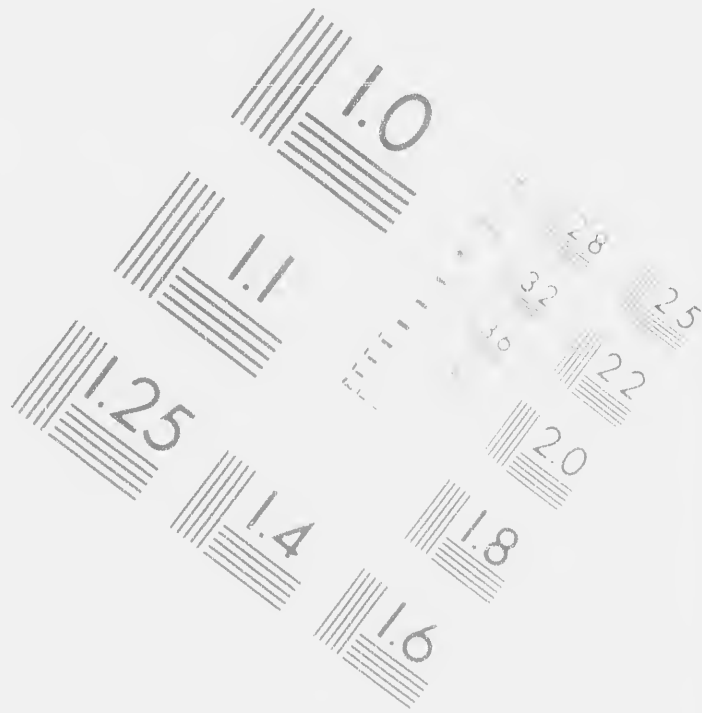


IMAGE EVALUATION
TEST TARGET



IMAGE EVALUATION
TEST TARGET (MT-3)



**CIHM/ICMH
Microfiche
Series.**

**CIHM/ICMH
Collection de
microfiches.**



Technical and Bibliographic Notes/Notes techniques

The Institute has attempted to obtain the best original copy available for filming. Features of this copy which may be bibliographically unique, which may alter any of the images in the reproduction, or which may significantly change the usual method of filming, are checked below.

L'Institut a...
qu'il lui a ét...
de cet exem...
point de vue...
une image r...
modification...
sont indiqués

Coloured covers/
Couverture de couleur

Colour
Pages

Covers damaged/
Couverture endommagée

Pages
Pages

Covers restored and/or laminated/
Couverture restaurée et/ou pelliculée

Pages
Pages

Cover title missing/
Le titre de couverture manque

Pages
Pages

Coloured maps/
Cartes géographiques en couleur

Pages
Pages

Coloured ink (i.e. other than blue or black)/
Encre de couleur (i.e. autre que bleue ou noire)

Showth...
Transpa...

Coloured plates and/or illustrations/
Planches et/ou illustrations en couleur

Quality
Qualité

Bound with other material/

Include

techniques et bibliographiques

L'Institut a microfilmé le meilleur exemplaire qu'il lui a été possible de se procurer. Les détails de cet exemplaire qui sont peut-être uniques du point de vue bibliographique, qui peuvent modifier une image reproduite, ou qui peuvent exiger une modification dans la méthode normale de filmage sont indiqués ci-dessous

- Coloured pages/
Pages de couleur
- Pages damaged/
Pages endommagées
- Pages restored and/or laminated/
Pages restaurées et/ou pelliculées
- Pages discoloured, stained or foxed/
Pages décolorées, tachetées ou piquées
- Pages detached/
Pages détachées
- Showthrough/
Transparence
- Quality of print varies/
Qualité inégale de l'impression
- Includes supplements

The copy filmed here has been reproduced to the generosity of:

Library of Congress
Photoduplication Service

The images appearing here are the best possible considering the condition and quality of the original copy and in keeping with the filming contract specifications.

Original copies in printed paper covers beginning with the front cover and ending with the last page with a printed or illustrated impression, or the back cover when appropriate, and other original copies are filmed beginning with the first page with a printed or illustrated impression, and ending on the last page with a printed or illustrated impression.

Maps, plates, charts, etc., may be filmed at different reduction ratios. Those too large to be entirely included in one exposure are

s been reproduced thanks

f Congress
lication Service

are are the best quality
condition and legibility
in keeping with the
ations.

d paper covers are filmed
cover and ending on
ted or illustrated impres-
when appropriate. All
filmed beginning on the
or illustrated impres-
last page with a printed

c., may be filmed at
s. Those too large to be
exposure are filmed

L'exemplaire filmé fut reproduit grâce à la
générosité de:

Library of Congress
Photoduplication Service

Les images suivantes ont été reproduites avec le
plus grand soin, compte tenu de la condition et
de la netteté de l'exemplaire filmé, et en
conformité avec les conditions du contrat de
filmage.

Les exemplaires originaux dont la couverture en
papier est imprimée sont filmés en commençant
par le premier plat et en terminant soit par la
dernière page qui comporte une empreinte
d'impression ou d'illustration, soit par le second
plat, selon le cas. Tous les autres exemplaires
originaux sont filmés en commençant par la
première page qui comporte une empreinte
d'impression ou d'illustration et en terminant par
la dernière page qui comporte une telle
empreinte.

Les cartes, planches, tableaux, etc., peuvent être
filmés à des taux de réduction différents.
Lorsque le document est trop grand pour être



By the
C

the Commi

Mr. D

the W

of the h

having R

of VI the un
the be
Incotau

For these are
of help
from other natio.
was a plunder
a war with t
be collected in t
to commerce. I
well as the nor
ions natio as ag
t. I predict m
will become g
species:

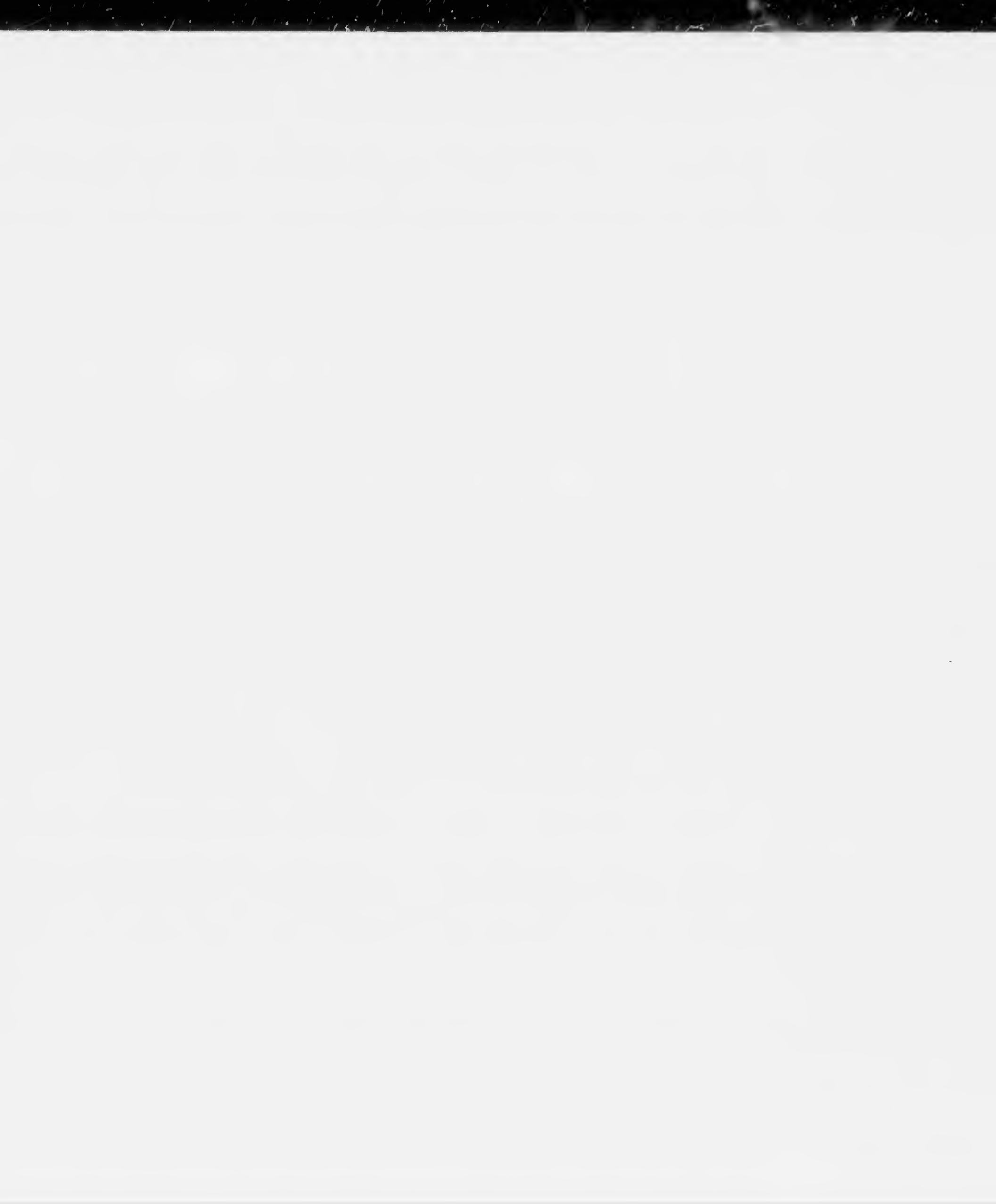
By the UNITED STATES in
CONGRESS assembled

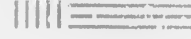
OCTOBER 20, 1756.

The Committee consisting of Mr. *Perre*, Mr. *Lee*, Mr. *Pinckney*,
Mr. *Houston* and Mr. *South*, to whom was referred the Letter from
the *Western* with the *Paper*, enclosed containing Intelligence
of the hostile intention of the Indians in the *Western* Coun-
try having R E P O R T E D:

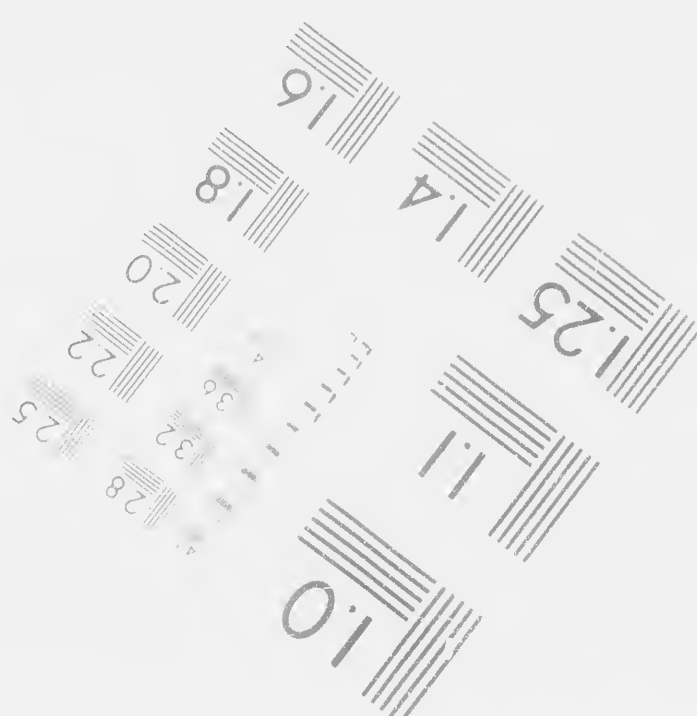
That the uniform tenor of the intelligence from the *Western* Country plainly indi-
cates the hostile disposition of a number of Indian Nations, particularly the *Shawanees*,
Tacotamies, *Chippewas*, *Tawas* and *Twightwees*.

That these Nations are now assembling in the *Shawanees* towns, and are joined by a
number of desperadoes, under the name of *Heroes* and *Cherries*, who are outcasts
from other Nations, and who have associated and settled in that Country for the purpose of
a raid and plunder. -- That they are labouring to draw in other Nations to unite with them
in a war with the Americans. -- That it is expected, one thousand warriors will soon
be collected in the *Shawanees* towns, from whence they have already dispatched parties
to commence hostilities. -- That from the motions of the Indians to the southward as
well as the northward, and the exertions made in different quarters to stimulate the
various Nations against the Americans, there is the strongest reason to believe that, unless
some special measures are taken effectually to counteract or frustrate their plans, the war
will become general, and may be attended with the most dangerous and lasting conse-
quences:





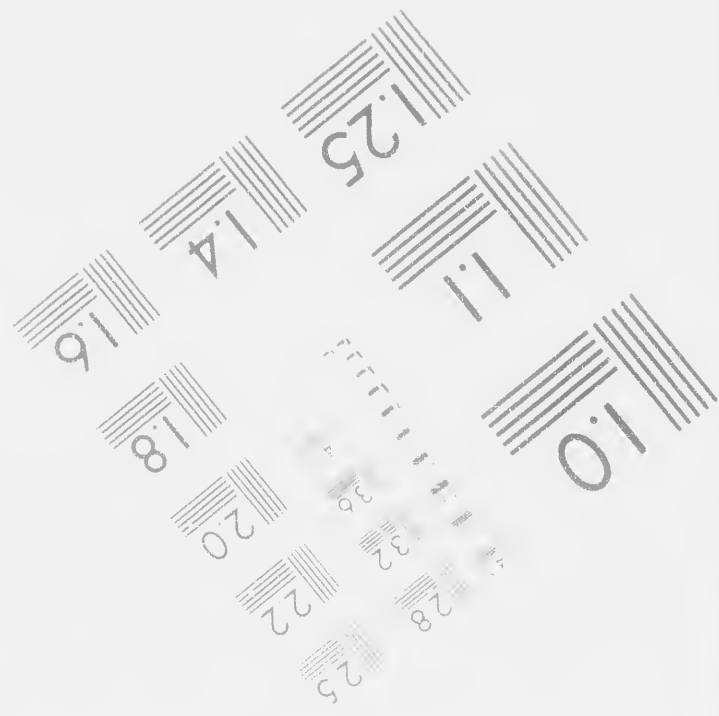
1.25



Photographic
Sciences
Corporation



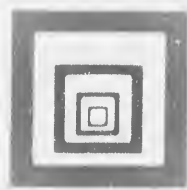
Canadian Institut



ographic
ences
poration

23 WEST MAIN STREET
WEBSTER, N.Y. 14580
(716) 872-4503





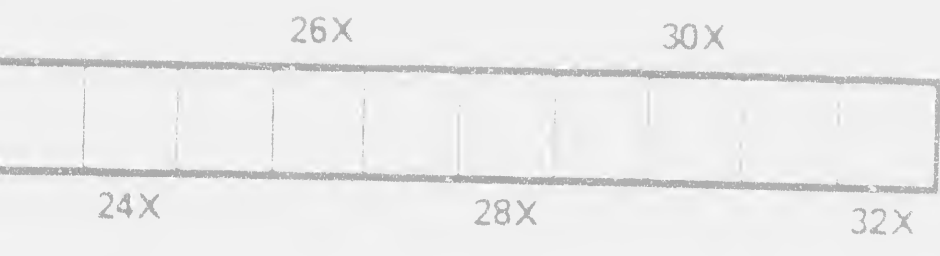
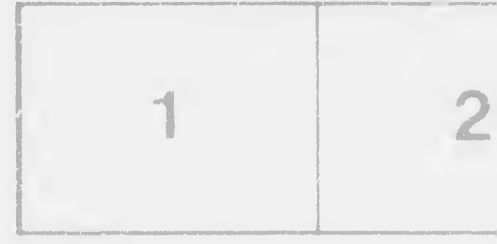
Canadian Institute for Historical Microreproductions / Institut canadien de microreproductions historiques

© 1988

oriques

- Quality of print varies/
Qualité inégale de l'impression
- Includes supplementary material/
Comprend du matériel supplémentaire
- Only edition available/
Seule édition disponible
- Pages wholly or partially obscured by errata
slips, tissues, etc., have been refilmed to
ensure the best possible image/
Les pages totalement ou partiellement
obscurcies par un feuillet d'errata, une pelure
etc. ont été filmées à nouveau de façon à
obtenir la meilleure image possible

Maps, plates, charts, etc., may be fi
different reduction ratios. Those too
entirely included in one exposure are
beginning in the upper left hand cor
right and top to bottom, as many fra
required. The following diagrams illu
method:



..., may be filmed at
s. Those too large to be
exposure are filmed
left hand corner, left to
as many frames as
diagrams illustrate the

Les cartes, planches, tableaux, etc., peuvent être
filmés à des taux de réduction différents.
Lorsque le document est trop grand pour être
reproduit en un seul cliché, il est filmé à partir
de l'angle supérieur gauche, de gauche à droite,
et de haut en bas, en prenant le nombre
d'images nécessaire. Les diagrammes suivants
illustrent la méthode.





the... of...
shall be...
...

That the...
the... of...
the... of...
the... of...
the... of...

Resolved, That...
the... of...
the... of...
the... of...
the... of...

Resolved, That...
the... of...
the... of...
the... of...
the... of...

That the...
which the...
furnished by...

That the...
established by...

That the...
after be formed...

Resolved, That...
the... of...
the... of...
the... of...
the... of...

...of the means of... actually to counteract... the...
...generally and may be... the... and...
...

That the committee then found... the troops...
...United States... the... and...
...the... but... the...
...and... the... which have been...
...of the... of the... with...

Resolved, That the number of one thousand, three hundred and...
...and... be raised for the term of three years...
...with the troops now in...
...of... officers and privates...
...troop...
...by the following states in the following proportions, to wit,

New-Hampshire	260	} Infantry and artillery	=	1300	
Massachusetts	660				
Rhode-Island	120				
Connecticut	180				
Virginia and Maryland	each 600	cavalry =	1200		
				<hr/>	2500
					1300

That the Secretary at war inform the executive authorities of the respective States...
...the number and rank of companies...
...by each state in proportion to the men.

That the pay and allowances to the troops to be raised by this act...
...by the act of Congress of the 12th of April 1775.

That the said troops shall be subject to the existing articles of war, or such as may here-
...after be formed by Congress or a committee of the States.

Resolved, That the States above mentioned be and they be by and be required to...
...to raise the quotas of troops, respectively assigned to them, with all possi-
...ble expedition, and that the executives of the said States be, and hereby are required
...if any of their Legislatures should not be in session, immediately to convene them for
...this purpose, as a delay may be attended with the most fatal consequences.

