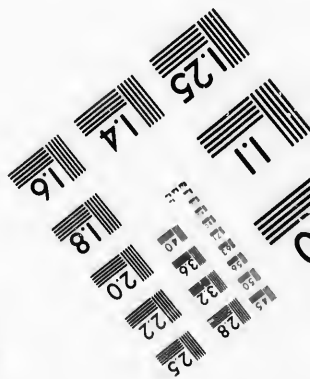
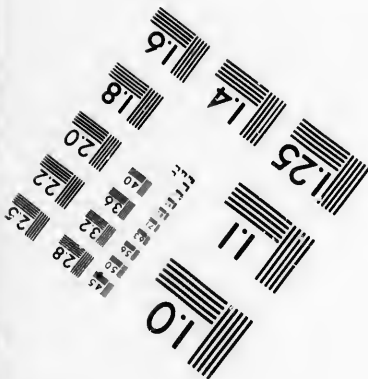
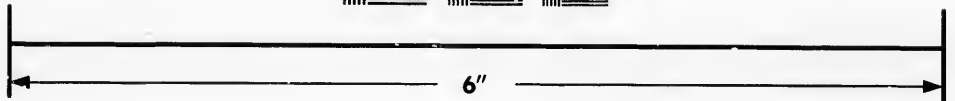
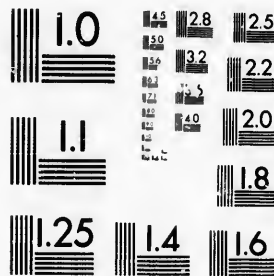


**IMAGE EVALUATION  
TEST TARGET (MT-3)**



**Photographic  
Sciences  
Corporation**

23 WEST MAIN STREET  
WEBSTER, N.Y. 14580  
(716) 872-4503

**CIHM/ICMH  
Microfiche  
Series.**

**CIHM/ICMH  
Collection de  
microfiches.**



**Canadian Institute for Historical Microreproductions / Institut canadien de microreproductions historiques**

**© 1986**

Technical and Bibliographic Notes/Notes techniques et bibliographiques

The Institute has attempted to obtain the best original copy available for filming. Features of this copy which may be bibliographically unique, which may alter any of the images in the reproduction, or which may significantly change the usual method of filming, are checked below.

L'Institut a microfilmé le meilleur exemplaire qu'il lui a été possible de se procurer. Les détails de cet exemplaire qui sont peut-être uniques du point de vue bibliographique, qui peuvent modifier une image reproduite, ou qui peuvent exiger une modification dans la méthode normale de filmage sont indiqués ci-dessous.

- |   |   |
|---|---|
| <input type="checkbox"/> Coloured covers/<br>Couverture de couleur  | <input checked="" type="checkbox"/> Coloured pages/<br>Pages de couleur   |
| <input type="checkbox"/> Covers damaged/<br>Couverture endommagée   | <input type="checkbox"/> Pages damaged/<br>Pages endommagées  |
| <input type="checkbox"/> Covers restored and/or laminated/<br>Couverture restaurée et/ou pelliculée   | <input type="checkbox"/> Pages restored and/or laminated/<br>Pages restaurées et/ou pelliculées   |
| <input type="checkbox"/> Cover title missing/<br>Le titre de couverture manque  | <input checked="" type="checkbox"/> Pages discoloured, stained or foxed/<br>Pages décolorées, tachetées ou piquées  |
| <input type="checkbox"/> Coloured maps/<br>Cartes géographiques en couleur  | <input type="checkbox"/> Pages detached/<br>Pages détachées   |
| <input type="checkbox"/> Coloured ink (i.e. other than blue or black)/<br>Encre de couleur (i.e. autre que bleue ou noire)  | <input checked="" type="checkbox"/> Showthrough/<br>Transparence  |
| <input type="checkbox"/> Coloured plates and/or illustrations/<br>Planches et/ou illustrations en couleur   | <input type="checkbox"/> Quality of print varies/<br>Qualité inégale de l'impression  |
| <input type="checkbox"/> Bound with other material/<br>Relié avec d'autres documents  | <input type="checkbox"/> Includes supplementary material/<br>Comprend du matériel supplémentaire  |
| <input type="checkbox"/> Tight binding may cause shadows or distortion along interior margin/<br>La reliure serrée peut causer de l'ombre ou de la distorsion le long de la marge intérieure  | <input type="checkbox"/> Only edition available/<br>Seule édition disponible  |
| <input type="checkbox"/> Blank leaves added during restoration may appear within the text. Whenever possible, these have been omitted from filming/<br>Il se peut que certaines pages blanches ajoutées lors d'une restauration apparaissent dans le texte, mais, lorsque cela était possible, ces pages n'ont pas été filmées. | <input type="checkbox"/> Pages wholly or partially obscured by errata slips, tissues, etc., have been refilmed to ensure the best possible image/<br>Les pages totalement ou partiellement obscurcies par un feuillet d'errata, une pelure, etc., ont été filmées à nouveau de façon à obtenir la meilleure image possible. |
| <input checked="" type="checkbox"/> Additional comments:/ [Printed ephemera] [2] p.<br>Commentaires supplémentaires:  |   |

This item is filmed at the reduction ratio checked below/  
Ce document est filmé au taux de réduction indiqué ci-dessous.

10X	14X	18X	22X	26X	30X
<input type="checkbox"/>	<input type="checkbox"/>	<input type="checkbox"/>	<input checked="" type="checkbox"/>	<input type="checkbox"/>	<input type="checkbox"/>
12X	16X	20X	24X	28X	32X

The copy filmed here has been reproduced thanks to the generosity of:

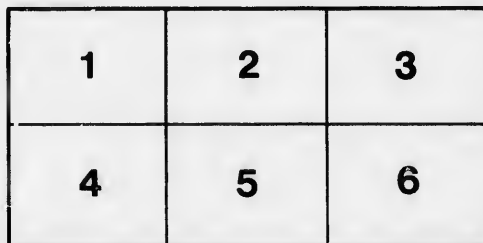
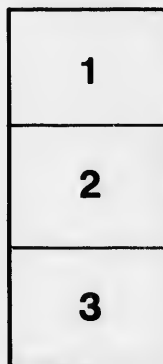
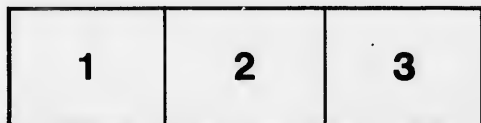
Library of the Public  
Archives of Canada

The images appearing here are the best quality possible considering the condition and legibility of the original copy and in keeping with the filming contract specifications.

Original copies in printed paper covers are filmed beginning with the front cover and ending on the last page with a printed or illustrated impression, or the back cover when appropriate. All other original copies are filmed beginning on the first page with a printed or illustrated impression, and ending on the last page with a printed or illustrated impression.

The last recorded frame on each microfiche shall contain the symbol  $\rightarrow$  (meaning "CONTINUED"), or the symbol  $\nabla$  (meaning "END"), whichever applies.

Maps, plates, charts, etc., may be filmed at different reduction ratios. Those too large to be entirely included in one exposure are filmed beginning in the upper left hand corner, left to right and top to bottom, as many frames as required. The following diagrams illustrate the method:



L'exemplaire filmé fut reproduit grâce à la générosité de:

La bibliothèque des Archives  
publiques du Canada

Les images suivantes ont été reproduites avec le plus grand soin, compte tenu de la condition et de la netteté de l'exemplaire filmé, et en conformité avec les conditions du contrat de filmage.

Les exemplaires originaux dont la couverture en papier est imprimée sont filmés en commençant par le premier plat et en terminant soit par la dernière page qui comporte une empreinte d'impression ou d'illustration, soit par le second plat, selon le cas. Tous les autres exemplaires originaux sont filmés en commençant par la première page qui comporte une empreinte d'impression ou d'illustration et en terminant par la dernière page qui comporte une telle empreinte.

Un des symboles suivants apparaîtra sur la dernière image de chaque microfiche, selon le cas: le symbole  $\rightarrow$  signifie "A SUIVRE", le symbole  $\nabla$  signifie "FIN".

Les cartes, planches, tableaux, etc., peuvent être filmés à des taux de réduction différents. Lorsque le document est trop grand pour être reproduit en un seul cliché, il est filmé à partir de l'angle supérieur gauche, de gauche à droite, et de haut en bas, en prenant le nombre d'images nécessaire. Les diagrammes suivants illustrent la méthode.

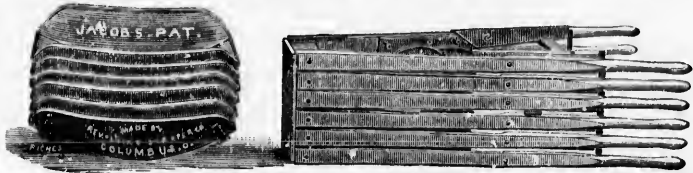
# Rice Lewis & Son,

(LIMITED.)

TORONTO, CANADA.

## JACOBS' PATENT WHEELBARROWS.

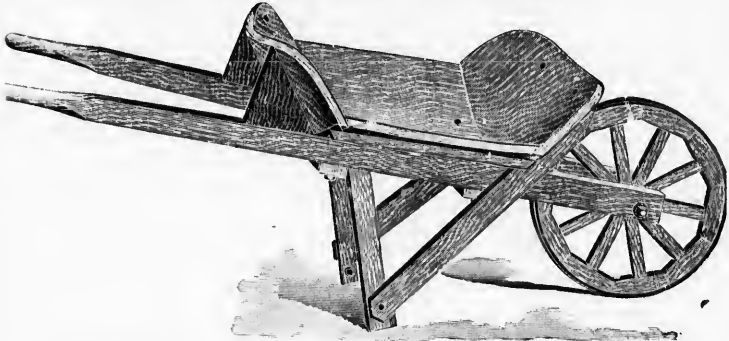
PACKED FOR SHIPPING.



The above cut shows the manner in which our **RAILROAD, ORE, MORTAR, WHARF, MALT, CORN AND STEEL BARROWS** are packed for shipment in this country. This insures lowest rate of freight, and they can be easily set up, by following the directions. A card having these directions is sent with each half-dozen Barrows.

Barrows in this shape require much less room for storage, and can be as easily set up as if received with tray fastened to frame.

## "SCIOTO" RAILROAD OR CANAL BARROW. WITH JACOBS' PATENT WOOD WHEEL.



Diameter of Wheel, 17 inches; tire,  $1\frac{3}{8}$  x 1  $\frac{1}{2}$  inches; spokes,  $\frac{1}{2}$  x 1 inch.

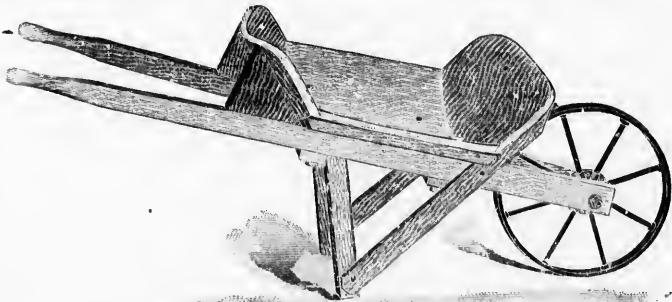
Full Sized Bent Tray, well planed, cleated, braced and bolted as shown in cut.

Legs and cross-pieces grained, leg braces extending beyond the handles, forming additional braces for the tray, and bolted through the tray.

Knocks down completely for shipping, and is easily set up.

Weight per dozen, 576 lbs.

Price, per dozen, \$.....



### WITH No. 13-X LEWIS STEEL SPOKE WHEEL

Same as Barrow shown above, except furnished with Lewis Steel Spoke Wheel.

Diameter of Wheel, 16  $\frac{1}{2}$  inches; spokes,  $\frac{3}{4}$  inch round; tire,  $1\frac{1}{2}$  x  $\frac{3}{4}$  inch.

Weight per dozen, 594 lbs.

Price, per dozen, \$.....

## RAILROAD OR CANAL BARROW.

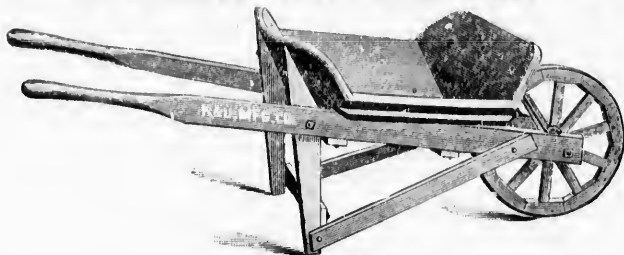
WITH JACOBS' PATENT WOOD WHEEL.

## RAILROAD OR CANAL BARROW.

WITH JACOBS' PATENT WOOD WHEEL.

## RAILROAD OR CANAL BARROW.

WITH JACOBS' PATENT WOOD WHEEL.



THE "BOSS."

### A THOROUGHLY FIRST-CLASS BOLTED BARROW.

Tray bolted to legs and handles. Planed and well finished. Wheel painted.  
 Weight per dozen, 600 lbs. Price, per dozen, \$.....

"JUMBO BARROW."—Same style, but greater capacity.  
 Weight per dozen, 720 lbs. Price, per dozen, \$.....

## RAILROAD OR CANAL BARROW.

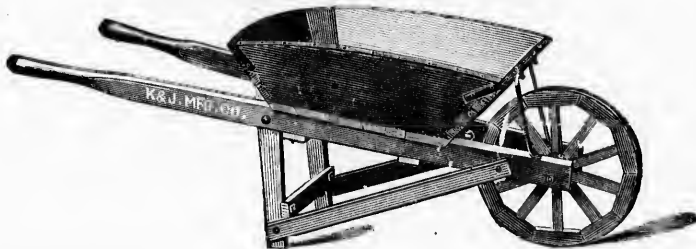
WITH JACOBS' PATENT STEEL SPOKE WHEEL.



Same as above, but with Jacobs' Patent Iron and Steel Wheel.  
 Diameter of Wheel, 16½ inches; wrought iron tire, 1¼ inches wide. Steel  
 spokes. Also furnished with No. 13-X Lewis Steel Wheel.  
 Weight per dozen, 650 lbs. Price, per dozen, \$.....

### BOLTED ORE BARROW.

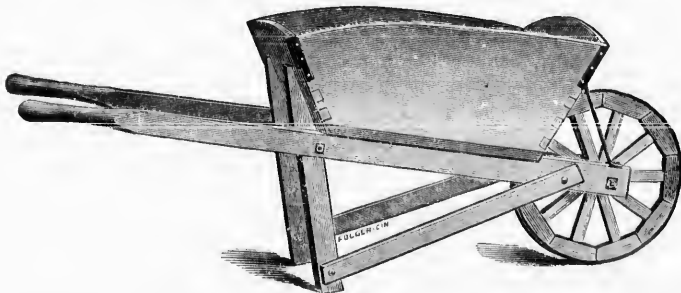
WITH JACOBS' PATENT WHEEL.



Size of Tray—8 inches deep at handles and 11½ inches at wheel; bottom,  
 17½ x 19 inches; top 27½ inches wide by 29 inches long.  
 Wheel, 17 inches in diameter; tire, 1¼ x ¼ inches; spokes, ¾ x 1 inch;  
 axle bolt, ½ inch. Painted brown. Wheel, lead color. Weight, 53 lbs.  
 Price, per dozen—Wood Wheel, \$..... Steel Wheel, \$.....

### BOLTED MORTAR BARROW.

WITH JACOBS' PATENT WHEEL.



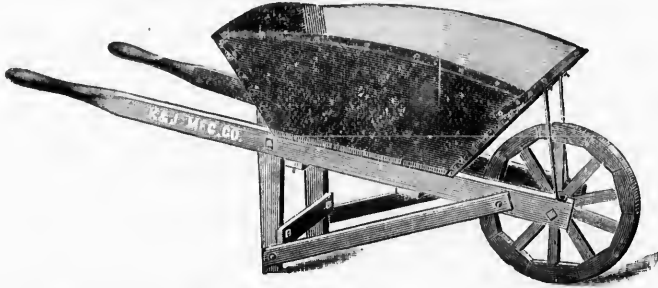
Same as Ore Barrow, except the tray, which is shaped specially for the  
 purpose, and is 10 inches deep at handles and 13 inches at wheel; bottom,  
 19½ inches square; top, 27 inches wide by 29 inches long. Edges of tray iron  
 strapped. Weight, 55 lbs.



Same as Ore Barrow, except the tray, which is shaped specially for the purpose, and is 10 inches deep at handles and 13 inches at wheel; bottom, 19½ inches square; top, 27 inches wide by 29 inches long. Edges of tray iron strapped. Weight, 55 lbs.

Either Ore or Mortar Barrow furnished with Lewis or Jacobs' Patent Steel Wheel 16½ inches in diameter; tire, 1½ x ½ inch; when specially ordered.  
 Price, per dozen—Wood Wheel, \$..... Steel Wheel, \$.....

## WHARF OR OYSTER BARROW. WITH JACOBS' PATENT WHEEL.



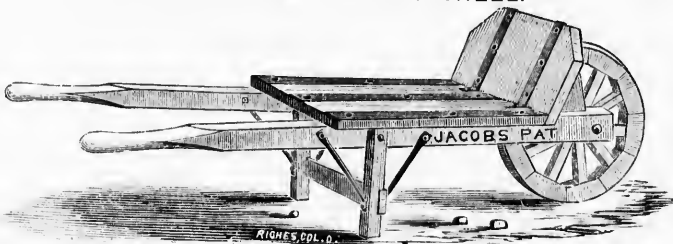
The best Wharf or Phosphate Barrow made. Also suited for ashes, coal or stone. All hard wood. Handles 5 feet long.

Side and end pieces of tray dovetailed together, iron strapped and firmly nailed. Thoroughly braced and bolted. Tray iron strapped on top.

Size of Tray—12 inches deep at handles and 16 inches at wheel; bottom, 17 inches wide by 18 long; top, 32 inches wide, 33 inches long. Wheel, 17 inches in diameter; tire, 1½ x ½ inches; spokes, 1 x 1 inch. Axle bolt, ½ inch. Painted brown. Wheel lead color. Weight, 63 lbs.

Price, per dozen.—Wood Wheel, \$..... Steel Wheel, \$.....

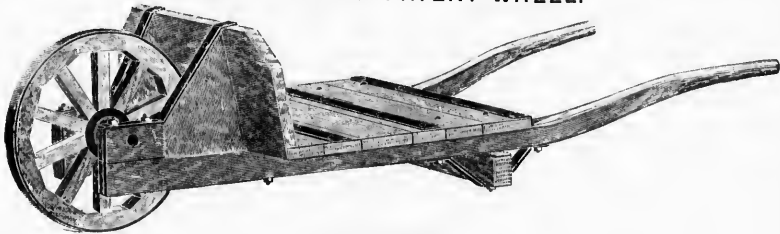
## STRAIGHT HANDLE STONE BARROW. WITH JACOBS' PATENT WHEEL.



FOR STONE AND PIG METAL. STRONG AND CHEAP. PAINTED.

Price, per dozen—Wood Wheel, \$..... Steel Wheel, \$.....

## BENT HANDLE STONE BARROW. WITH JACOBS' PATENT WHEEL.



PAINTED.

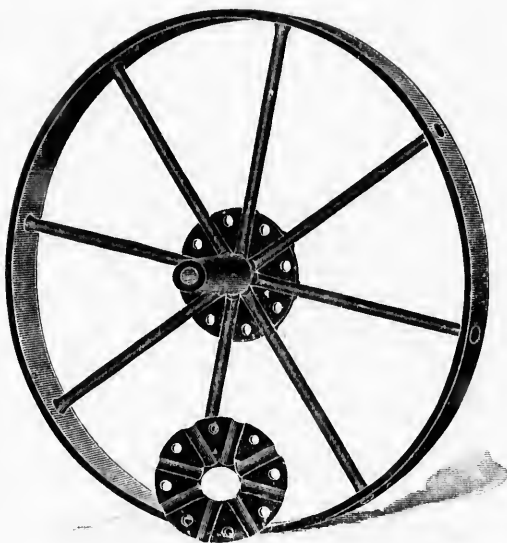
Price, per dozen—Wood Wheel, \$..... Steel Wheel, \$.....

Send for Catalogue illustrating our GRADING IMPLEMENTS—Scrapers, both Drag and Wheel, Contractors' Plows—three sizes, Dump Carts, Etc.

TABLE OF SIZES, LEWIS' STEEL SPOKE WHEEL.

Kind.	Diameter.	Tire.	Spokes.	Hub.	Axle.	Weight.
No. 13	16½ inch.	1½ x 4	¾ Rd.	6 in. long.	1½ inch.	8½ lbs.
No. 13X	16½ inch.	1½ x 4	¾ Rd.	6 in. long.	1½ inch.	10½ lbs.
No. 11	16½ inch.	1½ x 4	1 Rd.	6 in. long.	1½ inch.	10½ lbs.
No. 15-16	16½ inch.	1½ x 4	1 Rd.	7 in. long.	1½ inch.	13½ lbs.
No. 15-16	19 inch.	1½ x 4	1 Rd.	7 in. long.	1½ inch.	18½ lbs.

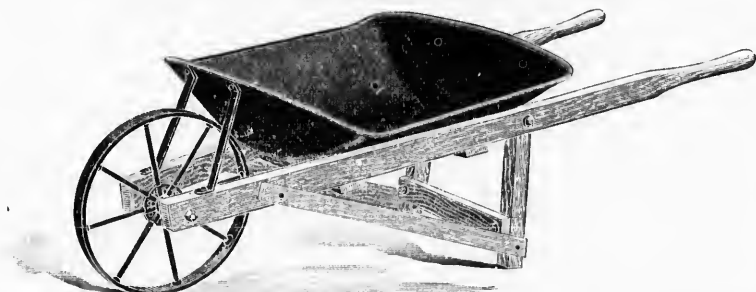
No. 13 used on "Scotch" Barrows, and only when specially ordered.  
 No. 13X used on R. R., Ore, Mortar, Wharf, Malt, Corn, 2c and 3c, Garden,  
 and Nos. 1, 2 and 3 Steel Tray Barrows.  
 No. 11 used on Straight Handle Stone, and Nos. 1, 1½ and 5 Tubular Bir-  
 rows, "Pan American" Steel Tray,  
 No. 15-16½ inch, used on Bent Handle and Pig Metal Barrows,  
 6, 7, 8, 9, 10 and 12 Tubular and Pig Metal Barrows.  
 No. 15-19 inch, used on Stave, Brick, and Nos. 1c and 3c, Garden Barrows.



LEWIS' STEEL SPOKE WHEEL.

## THE PAN-AMERICAN STEEL TRAY BARROW,

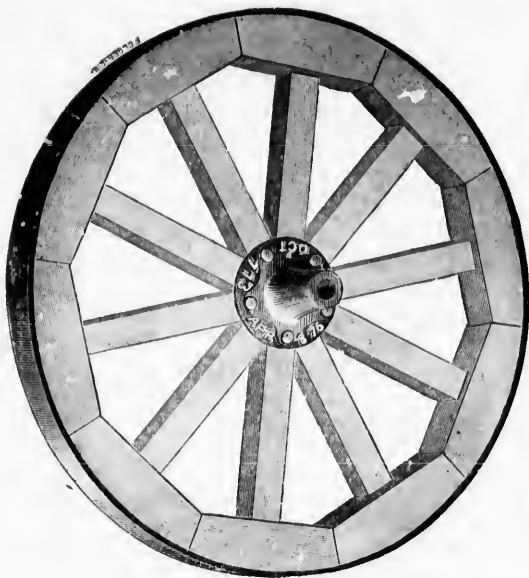
WITH LEWIS ROUND STEEL SPOKE WHEEL.  
 Steel vs. Wood—"THE WOOD TRAY MUST GO."



Size of Tray—Greatest length, 32 inches; greatest width, 33 inches; depth at wheel end, 11 inches; depth at handle end, 7½ inches.

Price, per dozen, \$.....

The Most Substantial, Cheapest and Best Steel Tray Barrow yet Manufactured. Specially adapted for Heavy Work. The Best Barrow on the Market for Street Pavers.



JACOBS' PATENT WOOD WHEEL.

TABLE OF SIZES, JACOBS' PATENT WOOD WHEELS.

Kind.	Diameter.	Tire.	Spokes.	Hub.	Axle.	Weight.
No. 2	17 inches.	1½ x 3-16	1 x 7	6 in. long.	1½ inch.	9 lbs.
No. 3	19 inches.	1½ x 3-16	1 x 11	6 in. long.	1½ inch.	11 lbs.
No. 4	21 inches.	1½ x 3-16	1 x 11	6 in. long.	1½ inch.	17 lbs.
No. 5	17 inches.	1½ x 3-16	1 x 11	6 in. long.	1½ inch.	11 lbs.
No. 6	17 inches.	1½ x 3-16	1 x 11	7½ in. long.	1½ inch.	13 lbs.
No. 7	19 inches.	1½ x 3-16	1 x 11	7½ in. long.	1½ inch.	16 lbs.

No. 2 used on R. R., Ore, Mortar, Pan American and 2c Garden Barrows.  
 No. 3 used on 3c Garden Barrow.  
 No. 4 used on Stave, 4c and 5c Garden Barrows.  
 No. 5 used on Malt, Wharf and Corn Barrows.  
 No. 6 used on Straight and Bent handle Stone Barrows.  
 No. 7 used on Open and Tight Bottom Brick Barrows.

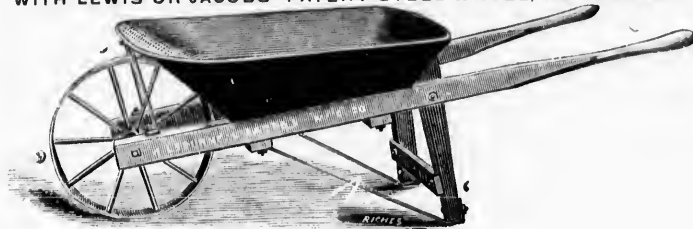


Size of Tray—Greatest length, 32 inches; greatest width, 33 inches; depth at wheel end, 11 inches; depth at handle end, 7½ inches.  
 Price, per dozen, \$.....

The Most Substantial, Cheapest and Best Steel Tray Barrow yet Manufactured. Specially adapted for Heavy Work. The Best Barrow on the Market for Street Pavers.

## The "Columbus" Steel Tray Wheelbarrows.

WITH LEWIS OR JACOBS' PATENT STEEL WHEEL, AS ORDERED.



No. 2.

Wheel, 16½ inches diameter; tire, 1¼ x ½ inches.

Tray of No. 15 Steel; flange turned over a ½-inch steel rod, passing entirely around the tray, giving a smooth finish to the edge, preventing breaking, and stiffening and strengthening the tray. Tray and wheel painted black, frame brown.

**No. 1.** For Earth, Sand, Ore, Cinders and Foundry use. Greatest width of tray, 28½ inches; greatest length, 32½ inches; greatest depth, 7 inches. Capacity, 3 cubic feet. Weight complete, 57 lbs. Price, \$.....

**No. 2.** For Coal, Manure, Cinders, Ashes, etc. Greatest width of tray, 28½ inches; greatest length, 36 inches; greatest depth, 8½ inches. Capacity, 4 cubic feet. Weight complete, 58 lbs. Price, \$.....

### No. 3 COKE OR COAL BARROW.

Tray of No. 15 Steel. Capacity, 400 to 450 pounds of coal, or 3½ bushels coke or charcoal. Adapted for Sawdust Barrow.

Greatest width of tray, 33 inches; greatest length, 42 inches; greatest depth, 11½ inches. Tray and frame painted brown; wheel, black. Weight, complete, 65 pounds.

Price, \$.....

## "Columbus" Tubular Steel Dirt, Coal and Coke Barrows.



CUT OF NO. 10 OR 12 BARROW WITH NO. 15 LEWIS ROUND STEEL SPOKE WHEEL

The No. 15 Lewis Steel Wheels used with these Barrows are 16½ inches in diameter, with iron tire 1¼ x ½ inches, and steel spokes ½ inch round, and extra heavy malleable hubs. The legs and leg braces are extra heavy.

**No. 4.** Tray made of No. 15 Steel. Capacity, 3 cubic feet of earth. Suitable for light work, as carrying loose earth, sand, etc. Weight of Barrow, 70 pounds. Price, each, \$.....

**No. 5.** Tray made of No. 14 Steel. Capacity, 4 cubic feet of earth. Weight of Barrow, 78 pounds. Price, each, \$.....

**No. 7.** Same as our No. 7 Mining Barrow. Capacity, 250 pounds coal. Greatest width of tray, 30 inches. Weight of Barrow, 88 pounds. Price, each, \$.....

**No. 10.** Tray of No. 13 Steel. Capacity, 400 to 450 lbs. of lump coal. Greatest width of tray, 35 inches. Weight of Barrow, 109 lbs. Price, each, \$.....

**No. 12.** Tray made of No. 15 Steel. Capacity, 3½ bushels of coke or charcoal. Greatest width of tray, 35 inches. Weight of Barrow, 93 pounds. Price, each, \$.....

## "Columbus" Tubular Steel Wheelbarrows.

# "Columbus" Tubular Steel Wheelbarrows.



**TWO-WHEEL COAL BARROW.**

Capacity, 400 lbs. Nut, even full; heaping full, 480 lbs. Lump Coal, even full 450 lbs; heaping full, 650 lbs.

PRICE \$....., EACH.

STEEL TRAY Size: Bottom, 20½ x 21 inches. Top measures 44 inches long by 40 inches wide at wheel end, by 31 inches wide at handle end. Greatest depth, 14½ inches. The bottom and front of tray is No. 10 gauge steel, sides and back No. 13, and put together with ⅝ rivets.

## Folding Garden or Farm Barrow.

WITH JACOBS' PATENT WOOD WHEEL. REMOVABLE SIDE-BOARDS. DOUBLE FRAME.



**No. 3-C. SET UP FOR USE.**

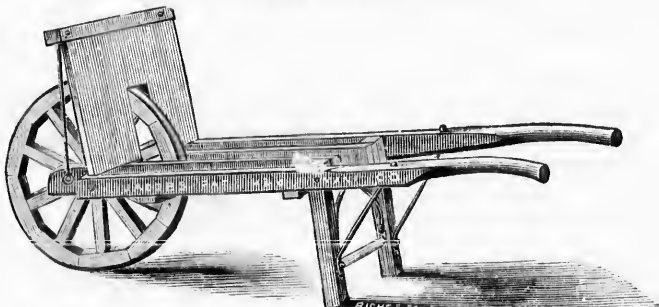
These Barrows are made of thoroughly seasoned wood, with DOUBLE FRAMES, firmly bolted together, iron braced, and so constructed that, by simply removing one bolt (the axle) and two nuts, they can be folded flat down and shipped at lowest rate of freight. But a moment's time is required to set up for use.

No.	DIMENSIONS OF BED.	CAPACITY.	LENGTH OF HANDLE.	WEIGHT.	PRICE, DOZEN.
2	11x 0x25 inches	3 cubic feet.	48 inches.	45 lbs.	.....
3-C	12x2x25 "	1 " "	52 "	52 lbs.	.....
4-C	11x21x28 "	6 " "	54 "	59 lbs.	.....
5-C	21x26x31 "	9 " "	54 "	80 lbs.	.....

All sizes are now painted green and varnished.

## OPEN BOTTOM BRICK BARROW.

WITH JACOBS' PATENT WHEEL.



This Barrow is designed for use at brick yards and especially for handling green brick. *Folds for shipping, same as Garden Barrow.* Diameter of wheel, 19 inches. Width of tire, 1½ inches. **Also made Tight Bottom.**

Price, per dozen—Open Bottom, \$..... Tight Bottom, \$.....

