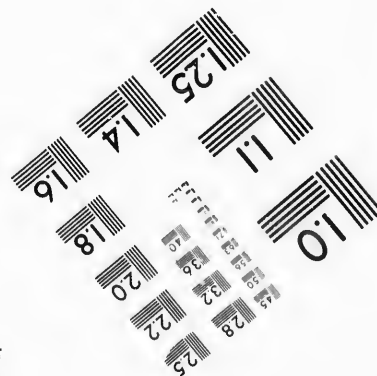
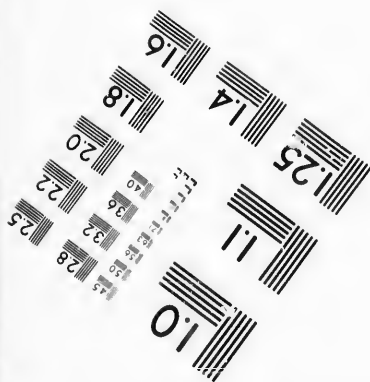
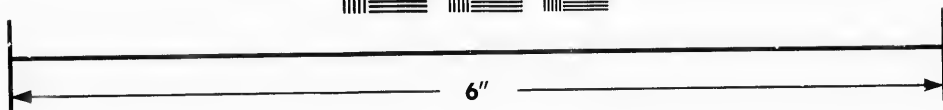
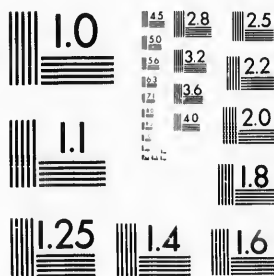


**IMAGE EVALUATION
TEST TARGET (MT-3)**



**Photographic
Sciences
Corporation**

23 WEST MAIN STREET
WEBSTER, N.Y. 14580
(716) 872-4503

**CIHM/ICMH
Microfiche
Series.**

**CIHM/ICMH
Collection de
microfiches.**



Canadian Institute for Historical Microreproductions / Institut canadien de microreproductions historiques

© 1987

Technical and Bibliographic Notes/Notes techniques et bibliographiques

The Institute has attempted to obtain the best original copy available for filming. Features of this copy which may be bibliographically unique, which may alter any of the images in the reproduction, or which may significantly change the usual method of filming, are checked below.

L'Institut a microfilmé le meilleur exemplaire qu'il lui a été possible de se procurer. Les détails de cet exemplaire qui sont peut-être uniques du point de vue bibliographique, qui peuvent modifier une image reproduite, ou qui peuvent exiger une modification dans la méthode normale de filmage sont indiqués ci-dessus.

- Coloured covers/
Couverture de couleur
- Covers damaged/
Couverture endommagée
- Covers restored and/or laminated/
Couverture restaurée et/ou pelliculée
- Cover title missing/
Le titre de couverture manque
- Coloured maps/
Cartes géographiques en couleur
- Coloured ink (i.e. other than blue or black)/
Encre de couleur (i.e. autre que bleue ou noire)
- Coloured plates and/or illustrations/
Planches et/ou illustrations en couleur
- Bound with other material/
Relié avec d'autres documents
- Tight binding may cause shadows or distortion along interior margin/
La reliure serrée peut causer de l'ombre ou de la distorsion le long de la marge intérieure
- Blank leaves added during restoration may appear within the text. Whenever possible, these have been omitted from filming/
Il se peut que certaines pages blanches ajoutées lors d'une restauration apparaissent dans le texte, mais, lorsque cela était possible, ces pages n'ont pas été filmées.

- Coloured pages/
Pages de couleur
- Pages damaged/
Pages endommagées
- Pages restored and/or laminated/
Pages restaurées et/ou pelliculées
- Pages discoloured, stained or foxed/
Pages décolorées, tachetées ou piquées
- Pages detached/
Pages détachées
- Showthrough/
Transparence
- Quality of print varies/
Qualité inégale de l'impression
- Includes supplementary material/
Comprend du matériel supplémentaire
- Only edition available/
Seule édition disponible
- Pages wholly or partially obscured by errata slips, tissues, etc., have been refilmed to ensure the best possible image/
Les pages totalement ou partiellement obscurcies par un feuillet d'errata, une pelure, etc., ont été filmées à nouveau de façon à obtenir la meilleure image possible.

Additional comments:
Commentaires supplémentaires:

[Printed ephemera] 1 sheet (verso blank)

This item is filmed at the reduction ratio checked below/
Ce document est filmé au taux de réduction indiqué ci-dessous.

10X	12X	14X	16X	18X	20X	22X	24X	26X	28X	30X	32X
							✓				

The copy filmed here has been reproduced thanks to the generosity of:

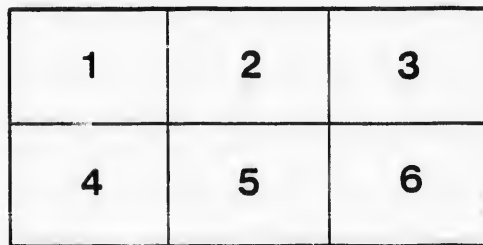
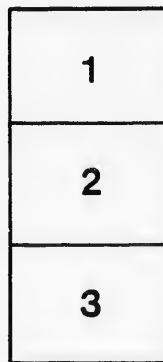
New Brunswick Museum
Saint John

The images appearing here are the best quality possible considering the condition and legibility of the original copy and in keeping with the filming contract specifications.

Original copies in printed paper covers are filmed beginning with the front cover and ending on the last page with a printed or illustrated impression, or the back cover when appropriate. All other original copies are filmed beginning on the first page with a printed or illustrated impression, and ending on the last page with a printed or illustrated impression.

The last recorded frame on each microfiche shall contain the symbol \rightarrow (meaning "CONTINUED"), or the symbol ∇ (meaning "END"), whichever applies.

Maps, plates, charts, etc., may be filmed at different reduction ratios. Those too large to be entirely included in one exposure are filmed beginning in the upper left hand corner, left to right and top to bottom, as many frames as required. The following diagrams illustrate the method:



L'exemplaire filmé fut reproduit grâce à la générosité de:

New Brunswick Museum
Saint John

Les images suivantes ont été reproduites avec le plus grand soin, compte tenu de la condition et de la netteté de l'exemplaire filmé, et en conformité avec les conditions du contrat de filmage.

Les exemplaires originaux dont la couverture en papier est imprimée sont filmés en commençant par le premier plat et en terminant soit par la dernière page qui comporte une empreinte d'impression ou d'illustration, soit par le second plat, selon le cas. Tous les autres exemplaires originaux sont filmés en commençant par la première page qui comporte une empreinte d'impression ou d'illustration et en terminant par la dernière page qui comporte une telle empreinte.

Un des symboles suivants apparaîtra sur la dernière image de chaque microfiche, selon le cas: le symbole \rightarrow signifie "A SUIVRE", le symbole ∇ signifie "FIN".

Les cartes, planches, tableaux, etc., peuvent être filmés à des taux de réduction différents. Lorsque le document est trop grand pour être reproduit en un seul cliché, il est filmé à partir de l'angle supérieur gauche, de gauche à droite, et de haut en bas, en prenant le nombre d'images nécessaire. Les diagrammes suivants illustrent la méthode.

ails
du
odifier
une
mage

rrata
o

belure.
n à

32X

LIST OF STOCK

—IN THE—

COMMERCIAL BANK OF

—WITH THE

Number of Shares on which they are entitled to Vote at the Ann

Adams, Mary S. - - -	2	Disbrow, James W., and Dis-		Hanford, Thomas - - -	
Allen, Frances - - -	4	brow, Caroline A., (<i>Execu-</i>		Howard, Mrs. John, Senr.,	
Chas. F., Estate of	2	<i>tor, Executrix and Trustee</i>)	4	Harrison, John - - -	
George Wm. - - -	4	Dickey, Hon. R. B. - - -	20	Irvine, Rev. Robert	
Anderson, John - - -	9	Executors of William Donald,	21	Jarvis, W. M. - - -	
Ash, Robert - - -	4	Ellis, Betsey - - -	1	Jack, David - - -	
Allison, Henry B. - -		Eastabrooks, C. H. - - -	61	Jack, William - - -	
Allison, Jos. F., Estate of		Eaton, Aaron, Estate of - -	30	McDouall, Margaret	
<i>Executors, Estate late C.</i>	12	Eaton, Aaron		Jeffrey, Alexander W. - -	
<i>F. Allison,</i>		Jno. Fraser,	9	Jarvis, E. L., and L. Botsfor	
Anglin, T. W. - - -	20	E. E. Lockhart,		(<i>Trustees for R. M. Jarvis</i>	
Breeze, William - - -	46	<i>Executors Estate G. T. Ray,</i>		<i>and C. Wheeler,</i>) - - -	
Brice, Thomas - - -	10	Elderkin, William R. - - -	12	Same, (<i>Trustees for R. M. Jarvis</i>	
Bedell, I. L., Estate of	20	Elderkin, Jephtha - - -	8	<i>and Amelia J. Jarvis,</i>) - -	
Burns, John, Estate of	40	Elderkin, John K. - - -	20	Same, (<i>Trustees for R. M. Jarvis</i>	
Bent, Rev. J. F. - - -	20	Edwards, Elizabeth - - -	20	<i>and S. M. Seward,</i>) - - -	
Bamford, Rev. Steven, Estate of	6	Ferguson, Mary - - -	28	Jack, William - - -	
Bliss, Lewis - - -	28	Fairweather, Edwin - - -	16	Jack, David W., Estate of -	
Brannan, Charles - - -	4	Ferguson, Hugh - - -	9	Jarvis, R. M., C. Ward and H.	
Burpee, Stephen - - -	4	Fisher, Michael, Estate of	1	R. L. Hara, (<i>Trustees,</i>) -	
Bank Stock Committee, in trust	25	Flett, Catherine - - -	2	Johnston, Capt. N., Estate of	
Betts, Hiram - - -	15	Foley, Miss Frances - - -	4	Johnston, Rev. George - - -	
Bayard, Samuel, M. D., Estate		Foley, Miss Catherine - - -	4	Jordan, F. G. jr. - - -	
of, <i>Trustee for L. Bayard</i>	2	Fotherby, Mary Ann - - -	4	Jarvis, Edward L. - - -	
Bayard, Maria, <i>Trustee</i> - -	4	Frost, Edwin - - -	8	Botsford, LeBaron } <i>Trustees</i>	
Do Do - - -	4	Francis, Manuel - - -	8	Jewett, Bethia J. - - -	
Blanchard, Jonathan - -	20	Fisher, Lewis P. - - -	2	James, Mary Ann, <i>Adm'trix</i>	
Bayard, Samuel, Estate of } <i>Trustee for Mrs. Sarah</i> <i>Bayard and Heirs</i>	4	Gilpin, Ann W. - - -	36	George Whitney, and C. H.	
Botterell, Rev. E. - - -	18	Gallagher, Jane - - -	4	Bustin, Adm'tstrat	
Beard, John W. } <i>Trustees</i>	51	Gilpin, Alfred - - -	20	Jones, Haze	
MORRISON, J. A. J		Gilpin, M. E. - - -	6	Jones, Edwa	
Bushy, Maria - - -	4	Gilpin, S. B. - - -	6	Key, Geo	
Beard, J. C. } <i>Trustees</i>	4	Grow, James - - -	21	Ketchum, S	
Baker, Elizabeth B. - - -	2	Gilmour, Andrew - - -	17	Kenah, Cha	
Bartlett, Elizabeth Jane -	2	Gilmer, John B. - - -	20	Lawson, M	
Brown, Jno. C. - - -	13	Gile, Alex., and } <i>Trustees</i>	21	Lovett, R	
Barnhill, Alex. - - -	4	Inches, Julius L. - - -		Loch, William, Estate of -	
Baker, Emma, wife of Baker	18	Gardner, Samuel - - -	5	Livingston, Maria C.	
		Gillis, Michael - - -	15	Lord Bishop of Fredericton,	
		Gosson, William, Estate of	16		

STOCKHOLDERS

—IN THE—

BOOK OF NEW BRUNSWICK.

—WITH THE—

Vote at the Annual Meeting, on Tuesday, Fifth day of May, 1868.

ford, Thomas -	1	McLean, James R., Estate of	2	Smith, Matilda -	23
ard, Mrs. John, Senr.,	13	McGrath, John -	20	Stephenson, Rev. John -	42
ison, John	8	McSorley, James -			
ie, Rev. Robert	4	McMorran, Maria Ann			
is, W. M.	40	McMorran, John -			
David W.		Nevers, Eliza Ann -	1	Robinson, S. M.	
William	8	Odell, Mary, Estate of	4	Starr, R. P., <i>Administrator</i> -	6
cuall, Margaret		Odell, George M. -	16	Scovil, Henry A. -	20
ey, Alexander W	12	Odell, Elizabeth -	45	Starr, R. P., <i>Trustee</i> ,	8
is, E. L., and L. Botsford,		Olive, Catherine -	7	Smith, Wm., in trust for his	2
<i>Trustees for R. M. Jarvis,</i>		Olive, William, Estate of	1	son Geo. Fred.	
<i>Ed C. Wheeler,</i> -	24	Owens, John, Estate of	22	Do. in trust for his daughter	2
<i>(Trustees for R. M. Jarvis,</i>		Oulton, Edward W. -	6	Alice Eliza,	
<i>Ed Amelia J. Jarvis,)</i> -	40	Peters, Samuel, Estate of	3	Smith, Elizabeth S. -	10
<i>(Trustees for R. M. Jarvis,</i>		Parks, William -	80	Sherwood, R. C. -	15
<i>Ed S. M. Stewart,)</i> -	40	Pettingell, Mrs. O. S. -	8	Starr, George H. -	10
William	9	Peppers, Thomas -	10	Smith, James -	10
David W., Estate of -	20	Parker, Peter -	6	Stewart, George -	16
is, R. M., C. Ward and Hon.		Pickett, Mary M. -	2	Seeds, James A. -	1
L. Hara, (<i>Trustees,</i>) -	249	Pickett, Willet -	2	Seeds, Thos. W. -	2
iston, Capt. N., Estate of	5	Purinton, David -	5	Starr, R. P. & W. F. -	7
iston, Rev. George -	8	Parks, Thomas -	175	Simonds, Rev. Richard	16
an, F. G. Jr. -	6	Parks, William, (<i>Trustee,</i>) -	2	Steeves, W. H. -	10
is, Edward L. } <i>Trustees,</i>	40	Parks, Samuel, Jr., Estate of	10	Snowball, J. B. -	20
ford, LeBron		Pidler, Alexander -	5	Snider, Geo. E. -	6
ett, Bethia J. -	1	Perley, Sarah E. -	1	Tuck, W. H. -	36
es, Mary Ann, <i>Adm'rix,</i> }	19	Parks, William, (<i>Trustee,</i>) -	73	Thomson, Miss Ann	39
George Whitney, and C. H.		Pettingell, James, (<i>Trustee,</i>) -	12	Thomson, Emily -	2
stin, <i>Adm'rat</i>		Peters, Thomas W. -	7	Thomas, George -	2
is, Hazel	1	Parker, the Hon. Neville -	22	Thomas, James U. -	35
is, Edward		Pettingell, James -	4	Twining, Rev. John Thomas	6
George		rescount, Gideon -	56	Tuck, Moses,	30
ian, S.	2	Ranney, William F., Estate of	5		21
ah, Cha	4	Ranney, Henry R. -	1	Treop, Anne A. -	4
son, M	25	Raymond, Philo M. -	4	Theall, Thomas F. -	3
ett, R	5	Radderok, William -	24	Theal, W. Y., Estate of,	22
n, William, Estate of -	20	Reed, Thomas, Estate of	3	Thomas, Mrs. Ann -	8
ngston, Maria	5	Reed, James -	29	Tomkins, C. T. -	16
Bishop of Fredericton,	16	Ring, Zebedee -	10	Uniacke, A. M. -	25

Beard, John W. } Trustees, 51	Gilman, S. B.	24	Ketchum, ...
Morrison, J. A. }	Gerow, James	17	Kenah, Charles
Bushy, Maria	Gilmour, Andrew	20	Lawson, ...
Beard, ...	Gaynor, John B.	21	Lovett, ...
Baker, Elizabeth B.	Gilman, Alex., and } Trustees,	21	Loch, William, ... of
Bartlett, Elizabeth Jane	Inches, Julius L.	5	Livingston, Maria
Brown, Jno. C.	Gardner, Samuel	15	Lord Bishop of Fredericton,
Barnhill, Alex.	Gillis, Michael	16	Longmaid, Richard
Baker, Emma, wife J. Baker	Grosvenor, William, Estate of	10	Lawson, Israel S., (Trustee,)
Bayard, Ethelinda	Hales, James	64	Laphorn, Samuel
Bayard, S. V.	Hazen, Hon. R. L.	4	Do. (Trustee,)
Black, J. C.	Hazen, Miss D. B.	20	Leavitt, C. M. A.
Connei, J. M., Estate of	Harkins, John	3	Lingley, B.
Clarke, Isaac	Hatheway, Mrs. Sarah, Estate of	21	Lingley, Phebe
Crozier, Thomas	Haines, Israel	44	Ladds, Elizabeth S.
Central Fire Insurance Comp'y	Hartt, David	2	Martin, Alexander
Canby, Miss M. A.	Hewson, Davies	2	Merritt, Charles
Coxetter, B., Heirs of	Hamilton, William	4	Melick, C. J.
Clarke, Rev. J. S.	Harper, Margaret	11	Major, W.
Crookshank, E., Estate of	Heale, John	16	Marter, T. P. R. M. Jarvis, a
Calvert, Richard, Estate of	Hegan, John	2	E. L. Jarvis,
Cantly, Alexander	Hazen, Hon. R. L., (Trustee	2	Magee, Thomas S., Estate of
Crawford, W. K.	for T. M. Hazen,)	2	Morrall, B.
Chase, Jane E.	Harkins, Sarah	30	Marter, Thomas P., and E. I.
Crawford, Ann	Hippisley, Edward, Estate of	225	Jarvis, (Trustees,)
Cook, Jane	Hutchinson, Richard	1	Milligan, James
Cosgrove, F. A.	Hersey, Solomon	1	Macawley, Rev. George, D. I.
Curry, William	Hartt, Mary Ann	1	Magee, William and Jno.
Conference, Wesleyan	Hartt, Matilda Jane	1	Milligan, M. M. D.
Carvill, George	Hartt, Jenima Caroline	10	McArthur, J. D., (Trustee,)
Donavon, Jeremiah	Holden, Jno.	52	McKeel, William B.
Douglas, et al, (Trustees)	Holden, John (Executor)	4	McLaughlin, D. J.
Dole, Mark, Estate of	Harding, Sarah	2	McLean, Rev. A.
Disbrow, Mrs. Amelia	Hunt, Harriet G.	121	McLean, George, Estate of
Duncan, John	Hatheway, F. W., Estate of	182	McKennon, Catherine
Doak, Robert	Hazen, R. L. & D. J. McLaugh-	8	McDonald, Elizabeth
Dondon, William	lin, Committee, -	4	McLachlan, John
Dooley, John, Estate of	Howard, Mrs. John,		McLean, Julia M.
	Howard, Charlotte		

STOCKHOLDERS ELIGIBLE

Anglin, T. W.
 Breeze, William
 Duncan, John
 Donovan, Jeremiah
 Estabrooks, C. H.
 Gerow, James
 Gaynor, John B.
 Hazen, Hon. Robert L.

Hersey, Solomon
 Jarvis, W. M.
 Lingley, B.
 Lovett, George L.
 Merritt, Charles
 Major, William
 Melick, C. J.
 Milligan, James

McLaughlin, J. D.
 McSorley, James
 McGrath, John
 Parks, William
 Parks, Thomas
 Prescott, Gideon
 Ruddock, William
 Robertson, R., (Sailmaker,)

2	Ranney, William P., Estate of	3	Troop, Anne	4
4	Ranney, Henry R.	1	Theall, Thomas F.	3
25	Raymond, Philo M.	4	Theal, W. Y., Estate of	22
50	Ruddick, William	24	Thomas, Mrs. Ann	8
20	Reed, Thomas, Estate of	3	Tomkins, C. T.	16
5	Reed, James	29	Uniacke, A. M.	25
16	Ring, Zebedee	10	Vaughan, Thomas, Estate of	11
10	Robertson, R. (Sailmaker)	40	Vaughan, David and Thomas	8
5	Reid, Peter, Estate of	60	Vernon, James	28
5	Robinson, James	2	Vernon, Gideon and Richly,	
5	Rodger, Alexander	27	George, (Trustees)	13
34	Reid, Rebecca	16	Vaughan, Mary A.	6
52	Roberts, George	4	Vernon, Gideon	2
4	Reed, Robert	29	Vernon, Miss Grace	5
80	Ray, G. T., Estate of	96	Vaughan, Henry	4
1	Reed, James and Robert	30	Vanwart, William	30
80	Reading, Joel, (Trustee,)	2	White, Gilbert,	8
20	Robertson, Robert, (In'town)	81	Wooster, John	56
84	Roop, John	7	Walker, James	4
	Smith, William	34	Williamson, Jane	12
13	Scovil, Sarah Hannah	10	Woofendale, Mrs. S.	5
3	Sands, W. S., Estate of	20	Ward, C. (Trustee)	6
4	Sears, Edward	43	Wright, Miss Margaret A.	25
4	Sorrell, Charles	20	Whittekir, Charles	52
2	Starr, J. and J. L., in trust for		Ward, John	8
20	Mrs. E. Ratchford,	10	Wishart, John	79
14	Simonds, R., in trust for Mrs.		White, V. S.	8
4	E. Blackstock,	60	Whittaker, Mary	4
2	Slade, Lieut. Colonel W. H.	22	White, James E.	15
2	Smith, Mary E.	20	Wetmore, Thomas S.	1
40	Smith, Jane	12	Wedderburn, Jane	4
29	Seely, A. McL.	105	Wedderburn, Wm.	6
7	Snowball, Rev. John	80	Wilmot, Hon. P. A.	25
23	Scovil, Rev. W., for the M. C.		Waterbury, C. J.	10
2	Life Assurance Association	4		
4	Smith, Phoebe	4		
13	Smith, Elizabeth,	2		
1	Speakman, Mary	2		

GEORGE P. SANCTON, Cashier.

ELIGIBLE FOR DIRECTORS.

Laughlin, J. D.
 Morley, James
 Prath, John
 Ts, William
 Ts, Thomas
 Scott, Gideon
 dock, William
 ertson, R., (Sailmaker,)

Reed, Robert
 Reed, James
 Robertson, Robert, Indiantown
 Seely, A. McL.
 Sears, Edward
 Sorrell, Charles
 Tuck, Moses
 Troop, J. V.

Thomas, J. U.
 Tuck, W. H.
 Vernon, James
 Whittekir, Charles
 Wishart, John

