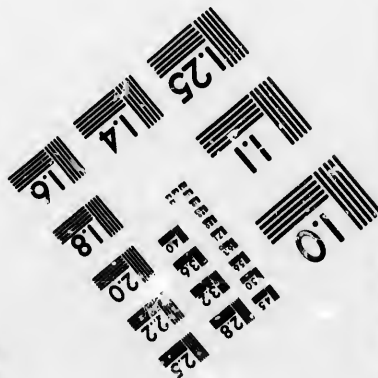
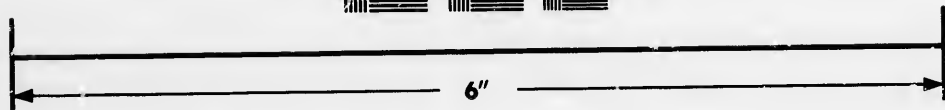
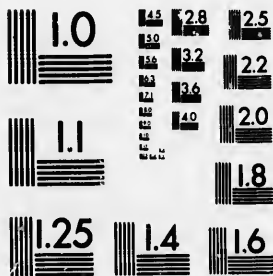


**IMAGE EVALUATION
TEST TARGET (MT-3)**



**Photographic
Sciences
Corporation**

23 WEST MAIN STREET
WEBSTER, N. Y. 14580
(716) 872-4303

**CIHM/ICMH
Microfiche
Series.**

**CIHM/ICMH
Collection de
microfiches.**



Canadian Institute for Historical Microreproductions / Institut canadien de microreproductions historiques

© 1987

Technical and Bibliographic Notes/Notes techniques et bibliographiques

The Institute has attempted to obtain the best original copy available for filming. Features of this copy which may be bibliographically unique, which may alter any of the images in the reproduction, or which may significantly change the usual method of filming, are checked below.

L'Institut a microfilmé le meilleur exemplaire qu'il lui a été possible de se procurer. Les détails de cet exemplaire qui sont peut-être uniques du point de vue bibliographique, qui peuvent modifier une image reproduite, ou qui peuvent exiger une modification dans la méthode normale de filmage sont indiqués ci-dessous.

- Coloured covers/
Couverture de couleur
- Covers damaged/
Couverture endommagée
- Covers restored and/or laminated/
Couverture restaurée et/ou pelliculée
- Cover title missing/
Le titre de couverture manque
- Coloured maps/
Cartes géographiques en couleur
- Coloured ink (i.e. other than blue or black)/
Encre de couleur (i.e. autre que bleue ou noire)
- Coloured plates and/or illustrations/
Planches et/ou illustrations en couleur
- Bound with other material/
Relié avec d'autres documents
- Tight binding may cause shadows or distortion along interior margin/
La reliure serrée peut causer de l'ombre ou de la distorsion le long de la marge intérieure
- Blank leaves added during restoration may appear within the text. Whenever possible, these have been omitted from filming/
Il se peut que certaines pages blanches ajoutées lors d'une restauration apparaissent dans le texte, mais, lorsque cela était possible, ces pages n'ont pas été filmées.
- Additional comments:/
Commentaires supplémentaires:

- Coloured pages/
Pages de couleur
- Pages damaged/
Pages endommagées
- Pages restored and/or laminated/
Pages restaurées et/ou pelliculées
- Pages discoloured, stained or foxed/
Pages décolorées, tachetées ou piquées
- Pages detached/
Pages détachées
- Showthrough/
Transparence
- Quality of print varies/
Qualité inégale de l'impression
- Includes supplementary material/
Comprend du matériel supplémentaire
- Only edition available/
Seule édition disponible
- Pages wholly or partially obscured by errata slips, tissues, etc., have been refilmed to ensure the best possible image/
Les pages totalement ou partiellement obscurcies par un feuillet d'errata, une pelure, etc., ont été filmées à nouveau de façon à obtenir la meilleure image possible.

[Printed ephemera] 1 sheet, [2] p.

This item is filmed at the reduction ratio checked below/
Ce document est filmé au taux de réduction indiqué ci-dessous.

10X	12X	14X	16X	18X	20X	22X	24X	26X	28X	30X	32X
								✓			

The copy filmed here has been reproduced thanks to the generosity of:

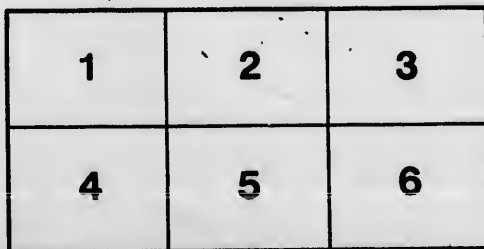
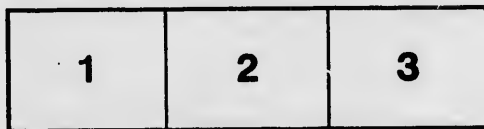
Metropolitan Toronto Library
Canadian History Department

The images appearing here are the best quality possible considering the condition and legibility of the original copy and in keeping with the filming contract specifications.

Original copies in printed paper covers are filmed beginning with the front cover and ending on the last page with a printed or illustrated impression, or the back cover when appropriate. All other original copies are filmed beginning on the first page with a printed or illustrated impression, and ending on the last page with a printed or illustrated impression.

The last recorded frame on each microfiche shall contain the symbol \rightarrow (meaning "CONTINUED"), or the symbol ∇ (meaning "END"), whichever applies.

Maps, plates, charts, etc., may be filmed at different reduction ratios. Those too large to be entirely included in one exposure are filmed beginning in the upper left hand corner, left to right and top to bottom, as many frames as required. The following diagrams illustrate the method:



L'exemplaire filmé fut reproduit grâce à la générosité de:

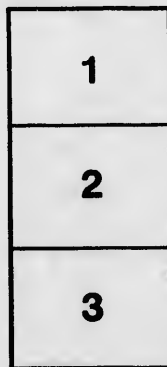
Metropolitan Toronto Library
Canadian History Department

Les images suivantes ont été reproduites avec le plus grand soin, compte tenu de la condition et de la netteté de l'exemplaire filmé, et en conformité avec les conditions du contrat de filmage.

Les exemplaires originaux dont la couverture en papier est imprimée sont filmés en commençant par le premier plat et en terminant soit par la dernière page qui comporte une empreinte d'impression ou d'illustration, soit par le second plat, selon le cas. Tous les autres exemplaires originaux sont filmés en commençant par la première page qui comporte une empreinte d'impression ou d'illustration et en terminant par la dernière page qui comporte une telle empreinte.

Un des symboles suivants apparaîtra sur la dernière image de chaque microfiche, selon le cas: le symbole \rightarrow signifie "A SUIVRE", le symbole ∇ signifie "FIN".

Les cartes, planches, tableaux, etc., peuvent être filmés à des taux de réduction différents. Lorsque le document est trop grand pour être reproduit en un seul cliché, il est filmé à partir de l'angle supérieur gauche, de gauche à droite, et de haut en bas, en prenant le nombre d'images nécessaire. Les diagrammes suivants illustrent la méthode.



GRAND TRUNK RAILWAY.

(See Other Side)

PASSENGERS
HAVE EVERY OPPORTUNITY OF OBTAINING REFRESHMENTS,
AT LOW RATES

At the Stations, where the Trains are timed to stop
for that purpose.

GREATLY IMPROVED ROOMY CARRIAGES,
well lighted, warmed, and having every convenience, have
been added to the already extensive equipment of this service.

At the depots, which have been erected for the
convenience of emigrants,

LARGE AND COMFORTABLE WAITING ROOMS,

with commodious, well arranged sleeping apartments,
are provided. At Sarnia are also provided special

SANITARY ARRANGEMENTS
AS REGARDS BATHING, WASHING, ETC

The Company's Agents are instructed to
leave nothing undone that can in any manner
contribute to the care and comfort of passengers.

Purchase **THROUGH TICKETS** from
place of departure. For Rates of Passage, First
Class and Special Emigrant Fares, or further
information, apply to Messrs. Allan, Bros. & Co.,
"Allan Line" Messrs. Flinn, Main & Mont-
gomery, "Dominion Line" and "Beaver Line,"
Liverpool, the Great Western Steamship Line,
Bristol, any of the Agents for the Ocean Steam-
ship Lines in Great Britain or Europe, and to
the Grand Trunk Railway, Dashwood House,
9 New Broad Street, London, E. C.

J. B. RENTON,

Secretary

GRAND TRUNK RAILWAY

OF CANADA.

This Railway and the Chicago and Grand Trunk Railway
NOW form the **SHORTEST ROUTE**

— FROM —

Quebec, Montreal, Portland, or Halifax, to Manitoba, the
North-West Territories and all points in Canada
and the United States.

SHORTEST SEA PASSAGE TO AMERICA

— IS VIA THE —

TRANS-ATLANTIC OCEAN STEAMSHIP LINES,

FORMING DIRECT CONNECTION WITH THE

GRAND TRUNK RAILWAY.

From Great Britain and Europe

To Quebec,	2,600 Miles
To Portland,	2,700
To Halifax,	2,800

Liverpool to Quebec in Summer, and Portland, U.S., or
Halifax, N.S., in Winter, and thence by this Railway to
Montreal, Ottawa, Kingston, Detroit, Chicago, Buffalo, Ni-
agara Falls, New York, Boston, Baltimore, Salt Lake, Omaha,
Colorado, Denver, San Francisco, Manitoba, the North-West
Territories, and all points in Canada and the United States.

Express Trains with through cars for Saratoga, Port Huron or Chicago, leave immediately after the arrival of Steamers.

No Transfers—less change than by any other route.

Baggage checked through in Bond and not subject to Customs examination.

The agents of the Company superintend the landing of passengers from the Steamers, and take special care that
their wants are attended to.

Luggage is transferred from the Steamers to the Railway cars free of charge.

Passengers for any point in Michigan, Wisconsin, Minnesota, Illinois, Iowa, Missouri, Kansas, Nebraska, or on
the Pacific coast, will find that this Railway offers lower fares and better accommodations than any other line.

Connections are made with the Pacific Mail Steamship Company's Line to China, Japan, Australia, New Zealand
and Vancouver Island.

Travelers and business men should travel via this Railway, and should not forget to visit the Falls and scenery of
Quebec.

Tickets issued from Europe for tours embracing Quebec, Montreal, Ottawa, Carleton Place, St.
Lawrence, Pass and Islands, Niagara Falls, etc., and the principal Cities of the
Continent. Also the Saguenay River and the Gulf of St. Lawrence.

Through Trains from Europe. Dining Cars run on all Through Trains. Passengers
may remain in their seats, and enjoy the scenery of the Gulf of St. Lawrence, the
Saguenay River, and the Falls of Quebec.

