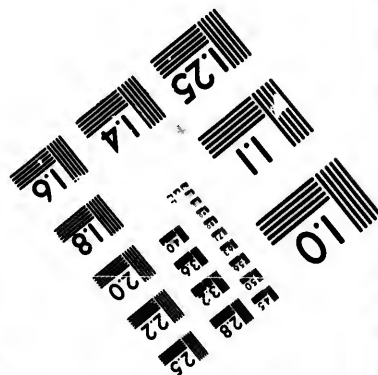
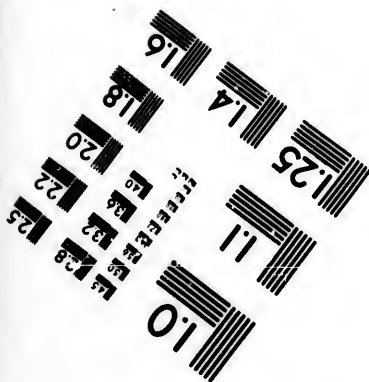
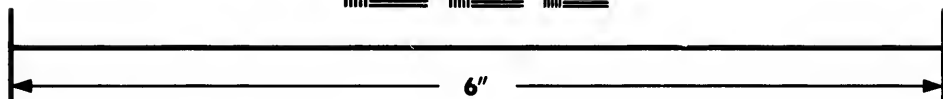
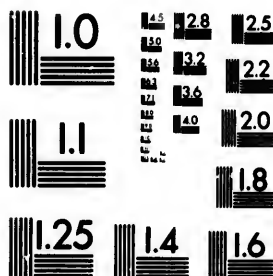


**IMAGE EVALUATION  
TEST TARGET (MT-3)**



**Photographic  
Sciences  
Corporation**

23 WEST MAIN STREET  
WEBSTER, N.Y. 14580  
(716) 872-4503

**CIHM/ICMH  
Microfiche  
Series.**

**CIHM/ICMH  
Collection de  
microfiches.**



**Canadian Institute for Historical Microreproductions / Institut canadien de microreproductions historiques**

**© 1985**

Technical and Bibliographic Notes/Notes techniques et bibliographiques

The Institute has attempted to obtain the best original copy available for filming. Features of this copy which may be bibliographically unique, which may alter any of the images in the reproduction, or which may significantly change the usual method of filming, are checked below.

L'Institut a microfilmé le meilleur exemplaire qu'il lui a été possible de se procurer. Les détails de cet exemplaire qui sont peut-être uniques du point de vue bibliographique, qui peuvent modifier une image reproduite, ou qui peuvent exiger une modification dans la méthode normale de filmage sont indiqués ci-dessous.

- Coloured covers/  
Couverture de couleur
- Covers damaged/  
Couverture endommagée
- Covers restored and/or laminated/  
Couverture restaurée et/ou pelliculée
- Cover title missing/  
Le titre de couverture manque
- Coloured maps/  
Cartes géographiques en couleur
- Coloured ink (i.e. other than blue or black)/  
Encre de couleur (i.e. autre que bleue ou noire)
- Coloured plates and/or illustrations/  
Planches et/ou illustrations en couleur
- Bound with other material/  
Relié avec d'autres documents
- Tight binding may cause shadows or distortion  
along interior margin/  
La reliure serrée peut causer de l'ombre ou de la  
distortion le long de la marge intérieure
- Blank leaves added during restoration may  
appear within the text. Whenever possible, these  
have been omitted from filming/  
Il se peut que certaines pages blanches ajoutées  
lors d'une restauration apparaissent dans le texte,  
mais, lorsque cela était possible, ces pages n'ont  
pas été filmées.
- Additional comments:/  
Commentaires supplémentaires:

- Coloured pages/  
Pages de couleur
- Pages damaged/  
Pages endommagées
- Pages restored and/or laminated/  
Pages restaurées et/ou pelliculées
- Pages discoloured, stained or foxed/  
Pages décolorées, tachetées ou piquées
- Pages detached/  
Pages détachées
- Showthrough/  
Transparence
- Quality of print varies/  
Qualité inégale de l'impression
- Includes supplementary material/  
Comprend du matériel supplémentaire
- Only edition available/  
Seule édition disponible
- Pages wholly or partially obscured by errata  
slips, tissues, etc., have been refilmed to  
ensure the best possible image/  
Les pages totalement ou partiellement  
obscurcies par un feuillet d'errata, une pelure,  
etc., ont été filmées à nouveau de façon à  
obtenir la meilleure image possible.

This item is filmed at the reduction ratio checked below/  
Ce document est filmé au taux de réduction indiqué ci-dessous.

10X	14X	18X	22X	26X	30X
<input type="checkbox"/>	<input type="checkbox"/>	<input type="checkbox"/>	<input checked="" type="checkbox"/>	<input type="checkbox"/>	<input type="checkbox"/>
12X	16X	20X	24X	28X	32X

The copy filmed here has been reproduced thanks to the generosity of:

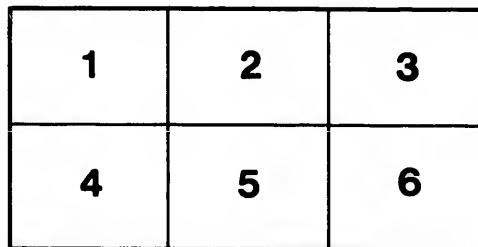
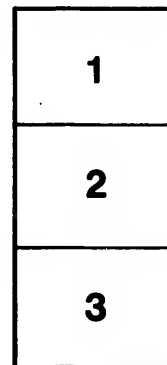
Library of the Public  
Archives of Canada

The images appearing here are the best quality possible considering the condition and legibility of the original copy and in keeping with the filming contract specifications.

Original copies in printed paper covers are filmed beginning with the front cover and ending on the last page with a printed or illustrated impression, or the back cover when appropriate. All other original copies are filmed beginning on the first page with a printed or illustrated impression, and ending on the last page with a printed or illustrated impression.

The last recorded frame on each microfiche shall contain the symbol  $\rightarrow$  (meaning "CONTINUED"), or the symbol  $\nabla$  (meaning "END"), whichever applies.

Maps, plates, charts, etc., may be filmed at different reduction ratios. Those too large to be entirely included in one exposure are filmed beginning in the upper left hand corner, left to right and top to bottom, as many frames as required. The following diagrams illustrate the method:



L'exemplaire filmé fut reproduit grâce à la générosité de:

La bibliothèque des Archives  
publiques du Canada

Les images suivantes ont été reproduites avec le plus grand soin, compte tenu de la condition et de la netteté de l'exemplaire filmé, et en conformité avec les conditions du contrat de filmage.

Les exemplaires originaux dont la couverture en papier est imprimée sont filmés en commençant par le premier plat et en terminant soit par la dernière page qui comporte une empreinte d'impression ou d'illustration, soit par le second plat, selon le cas. Tous les autres exemplaires originaux sont filmés en commençant par la première page qui comporte une empreinte d'impression ou d'illustration et en terminant par la dernière page qui comporte une telle empreinte.

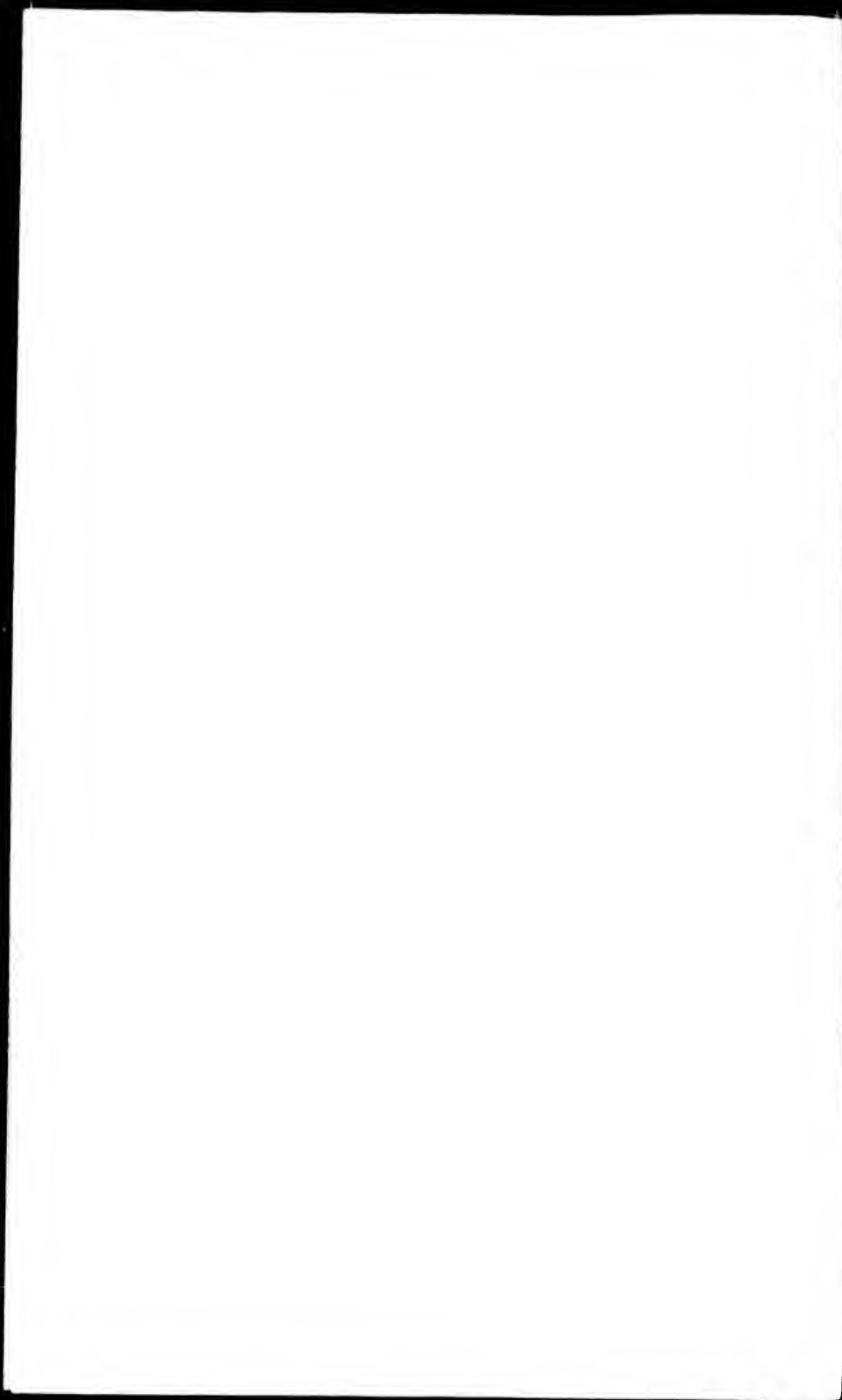
Un des symboles suivants apparaîtra sur la dernière image de chaque microfiche, selon le cas: le symbole  $\rightarrow$  signifie "A SUIVRE", le symbole  $\nabla$  signifie "FIN".

Les cartes, planches, tableaux, etc., peuvent être filmés à des taux de réduction différents. Lorsque le document est trop grand pour être reproduit en un seul cliché, il est filmé à partir de l'angle supérieur gauche, de gauche à droite, et de haut en bas, en prenant le nombre d'images nécessaire. Les diagrammes suivants illustrent la méthode.

etails  
a du  
odifier  
une  
image

rrata  
o

elure,  
n à



L  
G  
7  
u  
2  
m  
C  
C  
J

[CIRCULAR.]

Office of the Provincial Industrial and Agricultural  
Exhibition for 1859.

KINGSTON, CANADA WEST, )  
Sept. 1, 1859. }

Sir :

We beg respectfully to remind you that the Provincial Exhibition, which is open to all Canada, will be held in the vicinity of this City on the 27th, 28th, 29th and 30th September.

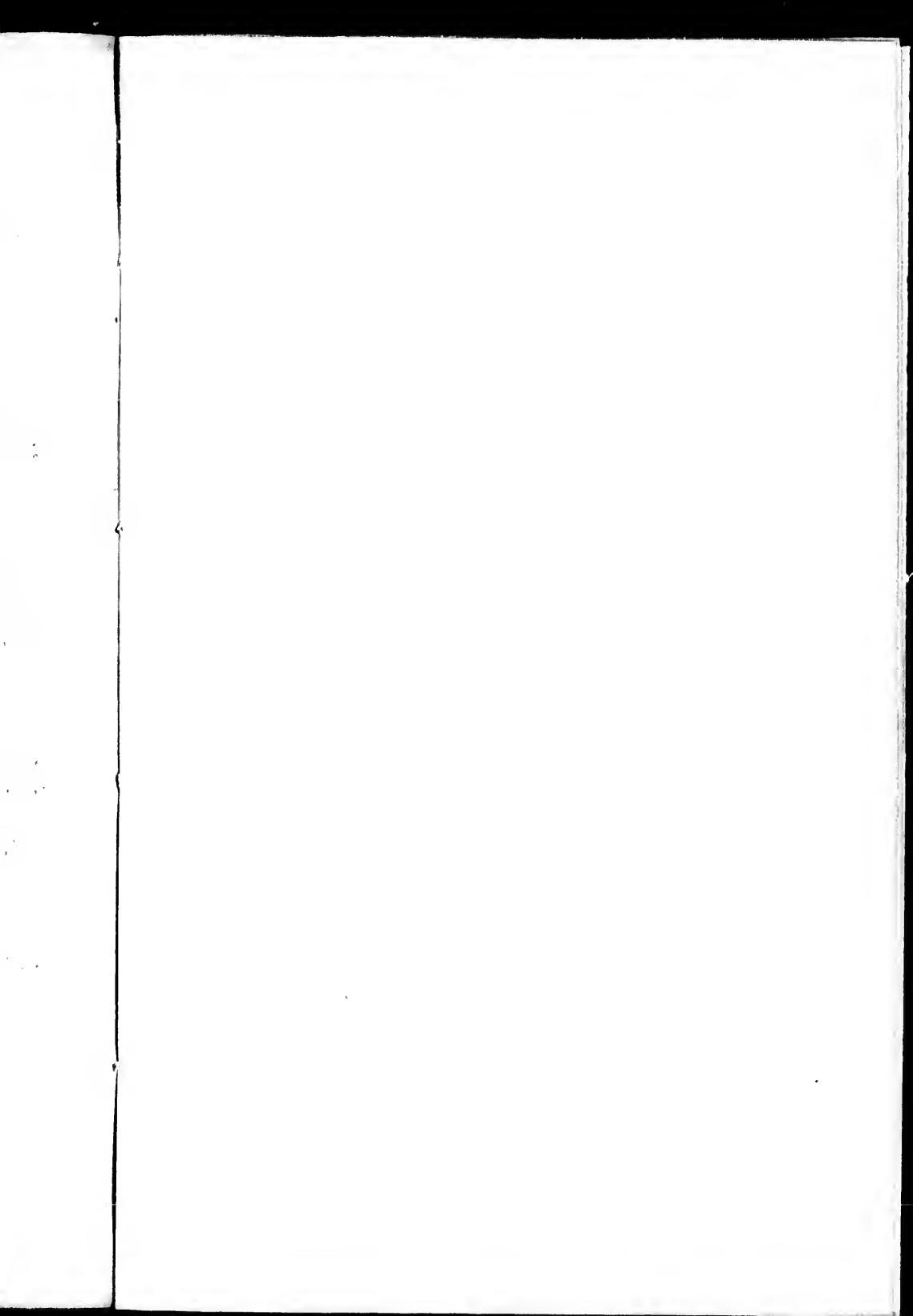
We enclose a Programme of the proposed arrangements, and beg you will be so good as to present this Circular at the Secretaries' Office on the Exhibition Ground, if you should decide to visit the Exhibition.

W. FERGUSON,  
*President of the Association.*

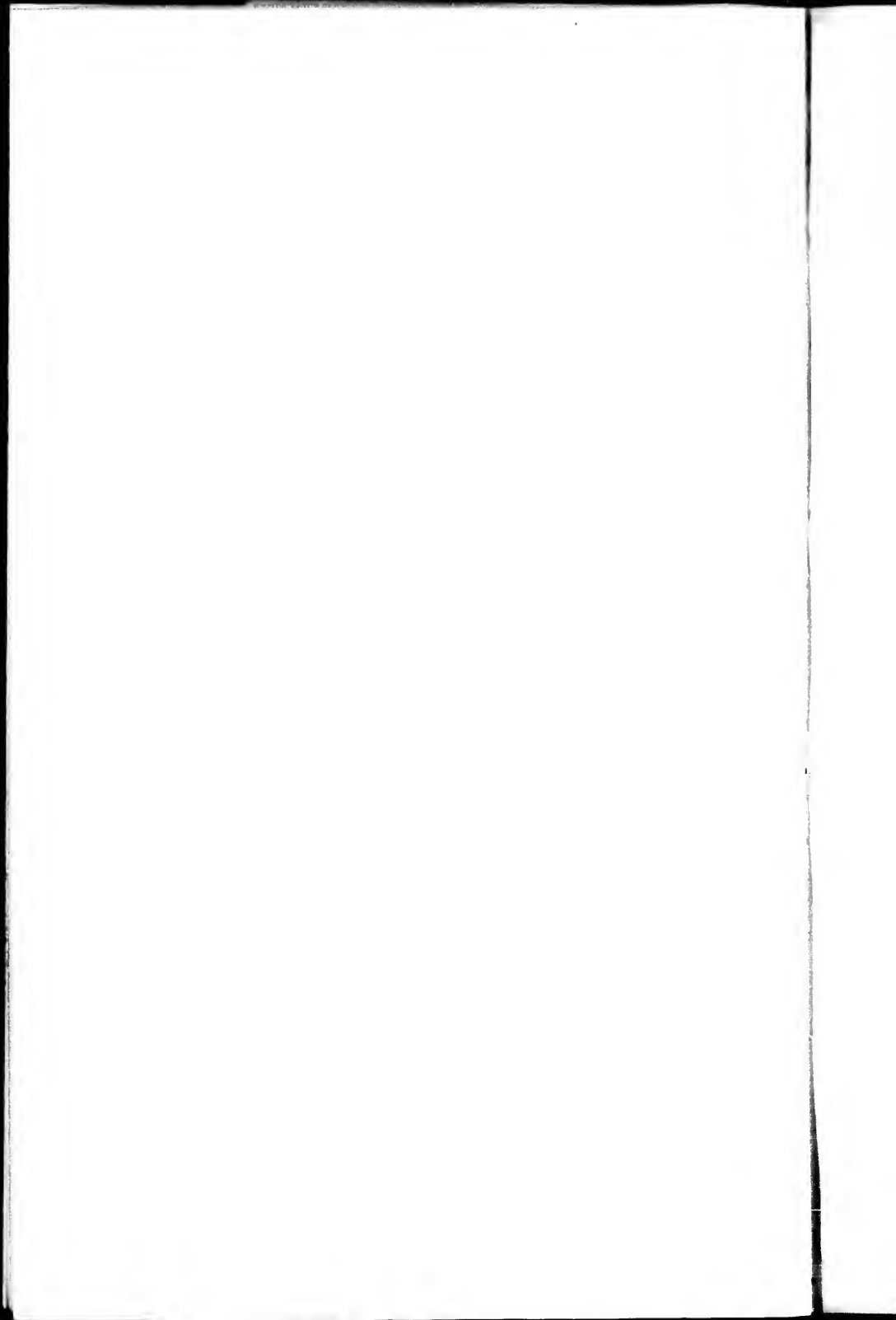
J. P. LITCHFIELD, M.D.,  
*Secretary to the Local Committee.*

1859

(29)







# Programme of Arrangements

## FOR THE EXHIBITION WEEK.

### TUESDAY, 27th SEPTEMBER, 1869 :

Free Lecture by Professor Lawson "On the Chemistry of the Soil, the Plant, and the Animal, and their Mutual Dependencies"—at the County Court House, at 6.30 p.m.

Concert, by the Kingston Musical Society, in the City Hall, at 8.30 p.m.

### WEDNESDAY, 28th SEPTEMBER :

Regatta in Kingston Harbor, at 12 o'clock noon.

Balloon Ascent by Mons. LaMountain in the Balloon "Atlantic" from the Artillery Park, at 5 p.m.

Free Lecture by Rev. H. Mulkins "On the Importance of Scientific Agricultural Education to the Farmers of Canada"—at the County Court House, at 7 p.m.

### THURSDAY, 29th SEPTEMBER :

Musical Ceremonies, on opening the Exhibition to the Public, at 12 o'clock noon.

Banquet on the Exhibition Ground, in the Mechanics' Hall, at 2.30 p.m.  
Public Ball in the City Hall, at 9 p.m.

### FRIDAY, 30th SEPTEMBER :

Balloon Ascent by Professor Steiner in the Balloon "Europa" from the *Tete de Pont* Barrack Square, at 5 p.m.

Free Lecture by Mr. Wm. M. Mills "On the value and Importance of Steam as a Mechanical Agent in the progress of Agriculture."

Grand Final Concert by the Kingston Musical Society in the City Hall at 8 p.m.

---

The following Gardens and Grounds will be open for the inspection of Visitors during the Exhibition Week :—The Garden of Regiopolis College in the City; Lockwood Asylum at Portsmouth; Dr Sampson's Farm west of Portsmouth; and the Cataraqui Cemetery at Waterloo.

Fort Henry can be visited by orders, to be obtained at the Commandant's Office at Point Frederick. Permission to view the Provincial Penitentiary may be procured upon application to the Mayor of the City, and the Sheriff of the United Counties.

The Reading Room in the City Hall will be thrown open to the Public, and Visitors are requested to call and insert their names and addresses in a Book kept for the purpose in the Room.

Books of the addresses of persons willing to receive transient guests to lodge and board, may be seen by Visitors at the Reading Room, City Hall; and at the Office of the Secretary on the Exhibition Ground.

Members of the Reception Committee will be in attendance at the Council Chamber, City Hall, and at the Committee Room, on the Exhibition Ground.

DEPARTMENT OF AGRICULTURE

OFFICE OF THE SECRETARY

WASHINGTON, D. C.

February 1, 1912

Dear Sir:

I have the honor to acknowledge the receipt of your letter of the 28th inst.

**Agricultural Circular.**

FREE

Issue Buchanan & M. M. W.

Hamilton

C. W.

Koster to be kept  
for record No. 1812

1870

(  
(

