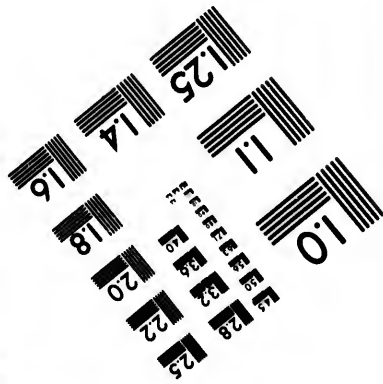
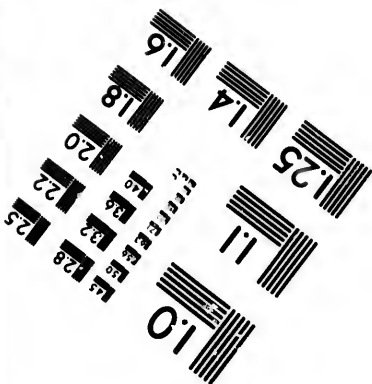
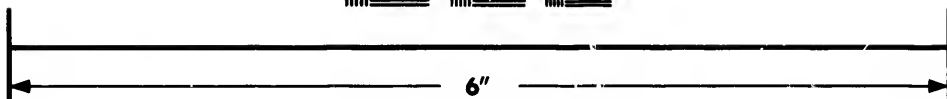
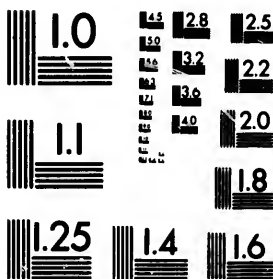


**IMAGE EVALUATION  
TEST TARGET (MT-3)**



**Photographic  
Sciences  
Corporation**

23 WEST MAIN STREET  
WEBSTER, N.Y. 14580  
(716) 872-4502

14 128  
11 125  
10 122  
9 120  
8 118

**CIHM/ICMH  
Microfiche  
Series.**

**CIHM/ICMH  
Collection de  
microfiches.**



**Canadian Institute for Historical Microreproductions / Institut canadien de microreproductions historiques**

11  
10  
9  
8  
7

**© 1982**

Technical and Bibliographic Notes/Notes techniques et bibliographiques

The Institute has attempted to obtain the best original copy available for filming. Features of this copy which may be bibliographically unique, which may alter any of the images in the reproduction, or which may significantly change the usual method of filming, are checked below.

L'Institut a microfilmé le meilleur exemplaire qu'il lui a été possible de se procurer. Les détails de cet exemplaire qui sont peut-être uniques du point de vue bibliographique, qui peuvent modifier une image reproduite, ou qui peuvent exiger une modification dans la méthode normale de filmage sont indiqués ci-dessous.

- Coloured covers/  
Couverture de couleur
- Covers damaged/  
Couverture endommagée
- Covers restored and/or laminated/  
Couverture restaurée et/ou pelliculée
- Cover title missing/  
Le titre de couverture manque
- Coloured maps/  
Cartes géographiques en couleur
- Coloured ink (i.e. other than blue or black)/  
Encre de couleur (i.e. autre que bleue ou noire)
- Coloured plates and/or illustrations/  
Planches et/ou illustrations en couleur
- Bound with other material/  
Relié avec d'autres documents
- Tight binding may cause shadows or distortion  
along interior margin/  
La reliure serrée peut causer de l'ombre ou de la  
distortion le long de la marge intérieure
- Blank leaves added during restoration may  
appear within the text. Whenever possible, these  
have been omitted from filming/  
Il se peut que certaines pages blanches ajoutées  
lors d'une restauration apparaissent dans le texte,  
mais, lorsque cela était possible, ces pages n'ont  
pas été filmées.
- Additional comments:/  
Commentaires supplémentaires:

- Coloured pages/  
Pages de couleur
- Pages damaged/  
Pages endommagées
- Pages restored and/or laminated/  
Pages restaurées et/ou pelliculées
- Pages discoloured, stained or foxed/  
Pages décolorées, tachetées ou piquées
- Pages detached/  
Pages détachées
- Showthrough/  
Transparence
- Quality of print varies/  
Qualité inégale de l'impression
- Includes supplementary material/  
Comprend du matériel supplémentaire
- Only edition available/  
Seule édition disponible
- Pages wholly or partially obscured by errata  
slips, tissues, etc., have been refilmed to  
ensure the best possible image/  
Les pages totalement ou partiellement  
obscurcies par un feuillet d'errata, une pelure,  
etc., ont été filmées à nouveau de façon à  
obtenir la meilleure image possible.

This item is filmed at the reduction ratio checked below/  
Ce document est filmé au taux de réduction indiqué ci-dessous.

10X	14X	18X	22X	26X	30X
<input type="checkbox"/>	<input type="checkbox"/>	<input type="checkbox"/>	<input checked="" type="checkbox"/>	<input type="checkbox"/>	<input type="checkbox"/>
12X	16X	20X	24X	28X	32X

The copy filmed here has been reproduced thanks to the generosity of:

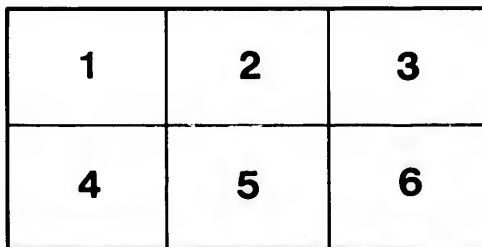
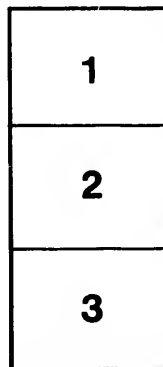
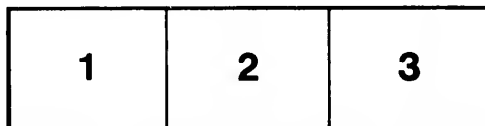
Thomas Fisher Rare Book Library,  
University of Toronto Library

The images appearing here are the best quality possible considering the condition and legibility of the original copy and in keeping with the filming contract specifications.

Original copies in printed paper covers are filmed beginning with the front cover and ending on the last page with a printed or illustrated impression, or the back cover when appropriate. All other original copies are filmed beginning on the first page with a printed or illustrated impression, and ending on the last page with a printed or illustrated impression.

The last recorded frame on each microfiche shall contain the symbol  $\rightarrow$  (meaning "CONTINUED"), or the symbol  $\nabla$  (meaning "END"), whichever applies.

Maps, plates, charts, etc., may be filmed at different reduction ratios. Those too large to be entirely included in one exposure are filmed beginning in the upper left hand corner, left to right and top to bottom, as many frames as required. The following diagrams illustrate the method:



L'exemplaire filmé fut reproduit grâce à la générosité de:

Thomas Fisher Rare Book Library,  
University of Toronto Library

Les images suivantes ont été reproduites avec le plus grand soin, compte tenu de la condition et de la netteté de l'exemplaire filmé, et en conformité avec les conditions du contrat de filmage.

Les exemplaires originaux dont la couverture en papier est imprimée sont filmés en commençant par le premier plat et en terminant soit par la dernière page qui comporte une empreinte d'impression ou d'illustration, soit par le second plat, selon le cas. Tous les autres exemplaires originaux sont filmés en commençant par la première page qui comporte une empreinte d'impression ou d'illustration et en terminant par la dernière page qui comporte une telle empreinte.

Un des symboles suivants apparaîtra sur la dernière image de chaque microfiche, selon le cas: le symbole  $\rightarrow$  signifie "A SUIVRE", le symbole  $\nabla$  signifie "FIN".

Les cartes, planches, tableaux, etc., peuvent être filmés à des taux de réduction différents. Lorsque le document est trop grand pour être reproduit en un seul cliché, il est filmé à partir de l'angle supérieur gauche, de gauche à droite, et de haut en bas, en prenant le nombre d'images nécessaire. Les diagrammes suivants illustrent la méthode.

ra  
détails  
es du  
modifier  
er une  
filmage

es

e

y errata  
d to

nt  
ne pelure,  
çon à



32X

35 15 96  
6. 38.  
10.

# To the Electors of CARLETON PLACE.

## TO THE ELECTORS OF CARLETON PLACE.

A circular has been issued by W. H. Scott who says he is president of the Huron and Quebec Railway.—Listen for a moment to the gist of what he says:

1st. *"It is no matter who Fowler is."* That is singular. Does he expect us to vote \$125,000 to a man of straw and who is called in the west a "Railway Lunatic"? A man who if reports are true is a Railway trickster. He, Scott evidently thinks we lack common sense.

2nd. *He says the line via Perth is only five miles longer.* Suppose it was true, but it is not, why even then, according to their own showing it would cost \$150,000 more than the direct line. BUT IT IS TEN MILES FARTHER, you have to cross Drummond diagonally to get to Perth, and then cross Bathurst and Sherbroke northward to the direct line. Will any one with common sense tell us we can do this without losing ten miles? Certainly not. *Ten miles means \$300,000 more than the direct line, or three times as much as Perth gives,* are we to lend ourselves to such a scheme for the purpose of injuring our own village! I hope not.

3rd. He says the County Peterboro pays \$150,000. It is false—read the By-Law for yourselves and you will see what I say is true. Parliament did confine this by-law to the Grand Junction, and Scott, the President, fought against it, for he knew it made the Peterborough by law a farce.

4. He propounds a financial basis. So far as the circular by "Drummond" not being enough, *it is too much.* Scott says \$1,375,000. *Is he mad too? It looks like it.*

Toronto is not likely to give a dollar Ottawa has already refused. County Victoria has not, and will not give a cent. And as to getting \$200,000. from Hastings it is too absurd to answer. \$1,375,000 for sooth! why, \$400,000 is nearer the truth.

5. Under this head he is too absurd to answer.

6. He has been communicating with Ottawa and Toronto, and so have I, and they decline to have anything to do with this man Fowler, or with Scott. They want men who have capital—not railway speculators.

7th. Here he refers to workshops, my answer is, read the "Peterboro By-Law" it will show how unreliable his statements are.

8. As a quibble, *what has been suggested is true.* There will be no separate line coming into Perth. Common sense would teach this.

Electors of Carleton Place, don't be gulled by Perth and Peterborough influence. Look to your own interests. *Have a direct line, or none at all, and if you stick to it you will get it.* Rally to the polls, vote down this by law, and send Scott and Fowler home to Peterborough, to attend to legitimate business, and not bogus railway enterprises.

AN ELECTOR.  
Carleton Place, Feb. 24th, 1876.

