

**CIHM  
Microfiche  
Series  
(Monographs)**

**ICMH  
Collection de  
microfiches  
(monographies)**



**Canadian Institute for Historical Microreproductions / Institut canadien de microreproductions historiques**

**© 1995**

## Technical and Bibliographic Notes / Notes technique et bibliographiques

The Institute has attempted to obtain the best original copy available for filming. Features of this copy which may be bibliographically unique, which may alter any of the images in the reproduction, or which may significantly change the usual method of filming are checked below.

L'Institut a microfilmé le meilleur exemplaire qu'il lui a été possible de se procurer. Les détails de cet exemplaire qui sont peut-être uniques du point de vue bibliographique, qui peuvent modifier une image reproduite, ou qui peuvent exiger une modifications dans la méthode normale de filmage sont indiqués ci-dessous.

- Coloured covers / Couverture de couleur
- Covers damaged / Couverture endommagée
- Covers restored end/or laminated / Couverture restaurée et/ou pelliculée
- Cover title missing / Le titre de couverture manque
- Coloured maps / Cartes géographiques en couleur
- Coloured ink (i.e. other than blue or black) / Encre de couleur (i.e. autre que bleue ou noire)
- Coloured plates end/or illustrations / Planches et/ou illustrations en couleur
- Bound with other material / Relié avec d'autres documents
- Only edition available / Seule édition disponible
- Tight binding may cause shadows or distortion along interior margin / Le reliure serrée peut causer de l'ombre ou de la distorsion le long de la marge intérieure.
- Blank leaves added during restorations may appear within the text. Whenever possible, these have been omitted from filming / Il se peut que certaines pages blanches ajoutées lors d'une restauration apparaissent dans le texte, mais, lorsque cela était possible, ces pages n'ont pas été filmées.
- Additional comments / Commentaires supplémentaires:

- Coloured pages / Pages de couleur
- Pages damaged / Pages endommagées
- Pages restored and/or laminated / Pages restaurées et/ou pelliculées
- Pages discoloured, stained or foxed / Pages décolorées, tachetées ou piquées
- Pages detached / Pages détachées
- Showthrough / Transparence
- Quality of print varies / Qualité inégale de l'impression
- Includes supplementary material / Comprend du matériel supplémentaire
- Pages wholly or partially obscured by errata slips, tissues, etc., have been refilmed to ensure the best possible image / Les pages totalement ou partiellement obscurcies par un feuillet d'errata, une pelure, etc., ont été filmées à nouveau de façon à obtenir la meilleure image possible.
- Opposing pages with varying colouration or discolourations are filmed twice to ensure the best possible image / Les pages s'opposant ayant des colorations variables ou des décolorations sont filmées deux fois afin d'obtenir le meilleur image possible.

This item is filmed at the reduction ratio checked below /  
Ce document est filmé au taux de réduction indiqué ci-dessous.

	10X	14X	18X	22X	26X	30X	
	12X	16X	20X	24X	28X	32X	

The copy filmed here has been reproduced thanks to the generosity of:

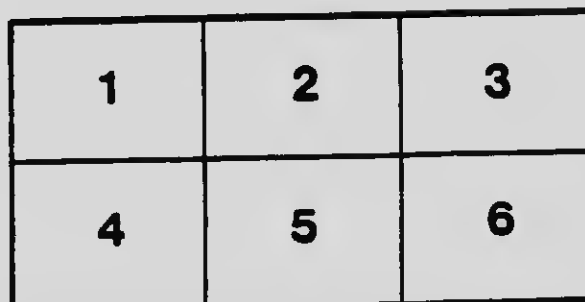
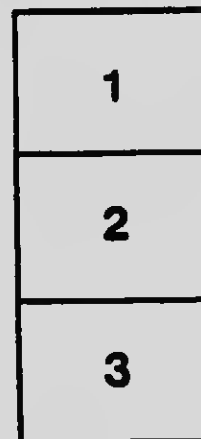
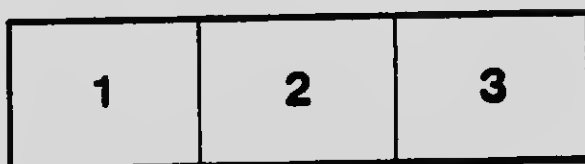
National Library of Canada

The images appearing here are the best quality possible considering the condition and legibility of the original copy and in keeping with the filming contract specifications.

Original copies in printed paper covers are filmed beginning with the front cover and ending on the last page with a printed or illustrated impression, or the back cover when appropriate. All other original copies are filmed beginning on the first page with a printed or illustrated impression, and ending on the last page with a printed or illustrated impression.

The last recorded frame on each microfiche shall contain the symbol  $\rightarrow$  (meaning "CONTINUED"), or the symbol  $\nabla$  (meaning "END"), whichever applies.

Maps, plates, charts, etc., may be filmed at different reduction ratios. Those too large to be entirely included in one exposure are filmed beginning in the upper left hand corner, left to right and top to bottom, as many frames as required. The following diagram illustrates the method:



L'exemplaire filmé fut reproduit grâce à la générosité de:

Bibliothèque nationale du Canada

Les images suivantes ont été reproduites avec le plus grand soin, compte tenu de la condition et de la netteté de l'exemplaire filmé, et en conformité avec les conditions du contrat de filmage.

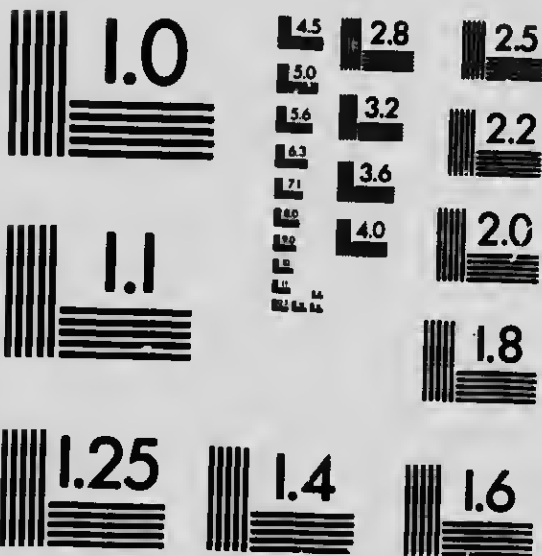
Les exemplaires originaux dont la couverture en papier est imprimée sont filmés en commençant par le premier plat et en terminant soit par la dernière page qui comporte une empreinte d'impression ou d'illustration, soit par le second plat, selon le cas. Tous les autres exemplaires originaux sont filmés en commençant par la première page qui comporte une empreinte d'impression ou d'illustration et en terminant par la dernière page qui comporte une telle empreinte.

Un des symboles suivants apparaîtra sur la dernière image de chaque microfiche, selon le cas: le symbole  $\rightarrow$  signifie "A SUIVRE", le symbole  $\nabla$  signifie "FIN".

Les cartes, planches, tableaux, etc., peuvent être filmés à des taux de réduction différents. Lorsque le document est trop grand pour être reproduit en un seul cliché, il est filmé à partir de l'angle supérieur gauche, de gauche à droite, et de haut en bas, en prenant le nombre d'images nécessaire. Les diagrammes suivants illustrent la méthode.

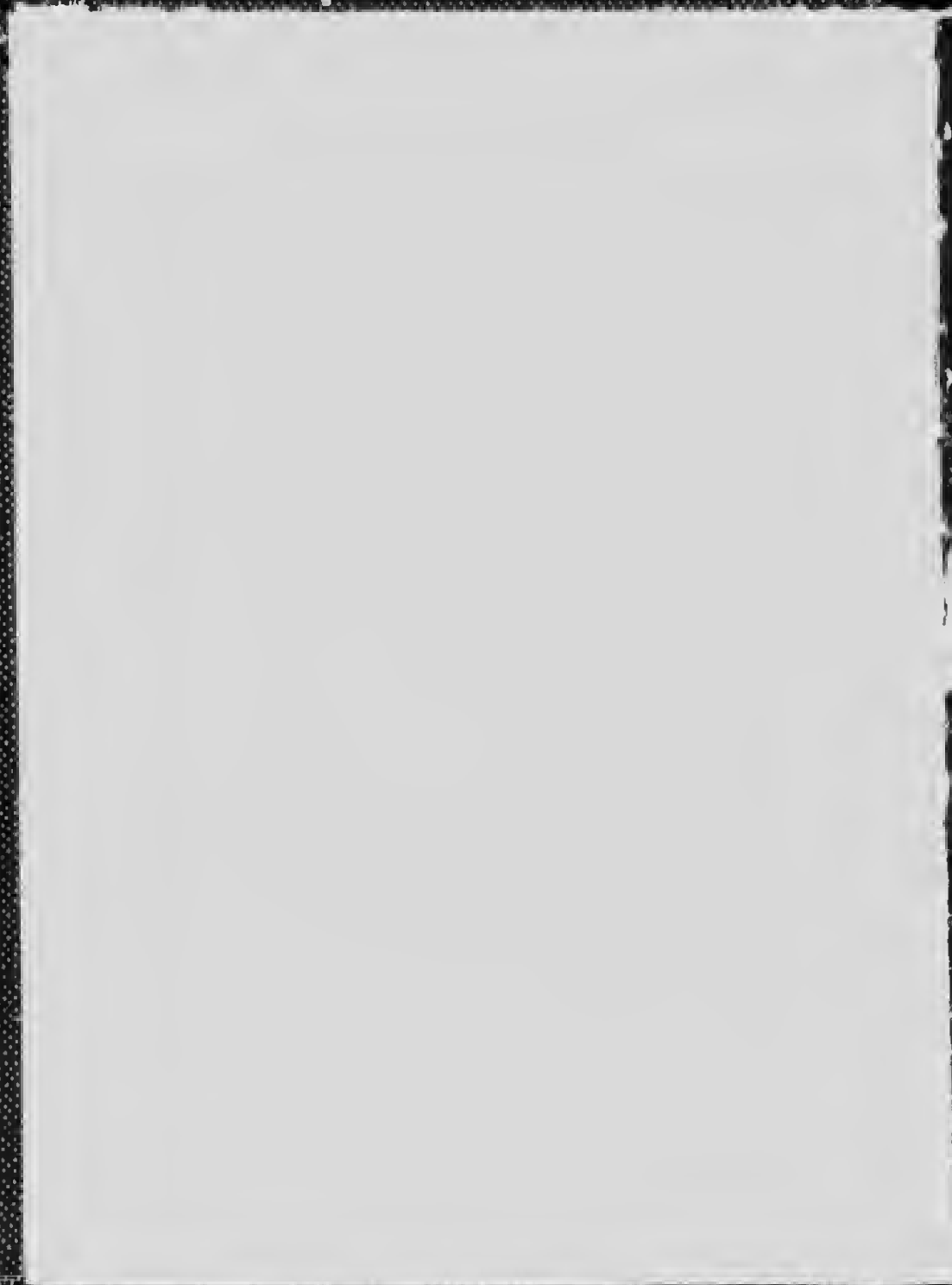
# MICROCOPY RESOLUTION TEST CHART

(ANSI and ISO TEST CHART No. 2)



**APPLIED IMAGE Inc**

100 East Main Street  
Rochester, New York 14609 USA  
(716) 482-0300 - Phone  
(716) 288-5989 - Fax







### **Cutting Fall Wheat at Swan River**

**The best Fall Wheat District in Manitoba. See description of Swan River and Swan River Rural Municipality on pages 59 and 67.**

# Opportunities in Manitoba

1914



Containing Extracts from  
Heaton's Annual.



Heaton's Provincial Booklet Series

Copyright by Ernest Heaton

Toronto, 1913

The best Fall Wheat District in Manitoba. See description of Swan River and Swan River Rural Municipality on pages 39 and 67.



# HEATON'S ANNUAL

Tenth Year

## CONTENTS 1914 EDITION

**DIRECTORIES.**—Official Directory (Members of Senate, House of Commons, Provincial Legislatures, Titled Canadians, Government Officials, etc.) Canadian Railways, Canadian Steamship Lines, Registry Offices (i.e., for Deeds, Chattel Mortgages, etc.). Banking Towns (showing Branch Banks, Railway Connection, Population, etc.). Insurance Directory (List of Insurance Companies Licensed to do Business in Canada in Every Line, with Financial Standing, Head Office, etc.). Solicitors, Customs Brokers and Forwarders.

**COMMERCIAL INFORMATION.**—Postal Rates, Trust Companies, Taxes on Commercial Travellers, Regulations affecting Joint Stock Companies, Foreign Corporations, Patents, Trade Marks, Copyright, Exchange Tables for all Countries, Weights and Measures, Freight and Other Tables, Railway Fares Toronto and Montreal to all Commercial Towns in Canada, etc.

**CUSTOMS INFORMATION.**—The Official Tariff with Alphabetical Index, Orders-in-Council, 4,500 Departmental Rulings, Decisions of Customs Board and Customs Regulations all revised to date of publication, Customs Ports and Outports, Treaties with France and Japan, Belgium, Holland, Italy, West Indies, etc.—This is recognized as the standard work on Canadian Customs Law.

**DESCRIPTIONS OF TOWNS.**—A Gazetteer of all Towns with Population of 1,500 and over in Eastern Provinces, and 400 and over in the West, compiled from official returns from the local Boards of Trade, giving Population, Shipping Facilities, Hotels, Existing Industries, Municipal Statistics, Power Rates, Inducements offered to New Industries, also Special Opportunities for New Industries and Business Openings, and Illustrated Advertisements of Progressive Towns.

**AGRICULTURAL AND FRUIT DISTRICTS.**—A concise description of districts in each Province to which immigration is attracted, Price of Lands, Dominion and Provincial Regulations Affecting Crown Lands, etc., Local References.

**GENERAL INFORMATION.**—A mine of concise information officially revised by the Dominion and Provincial Governments, arranged in Encyclopædic form.

**PRICE (Cloth Bound) FIVE SHILLINGS**

For sale by all leading booksellers; Heaton's Agency, Publishers, Toronto; and Simpkin, Marshall, Hamilton, Kent & Co., Limited, Ludgate Hill, London, Eng

# Opportunities in Manitoba

## General Information

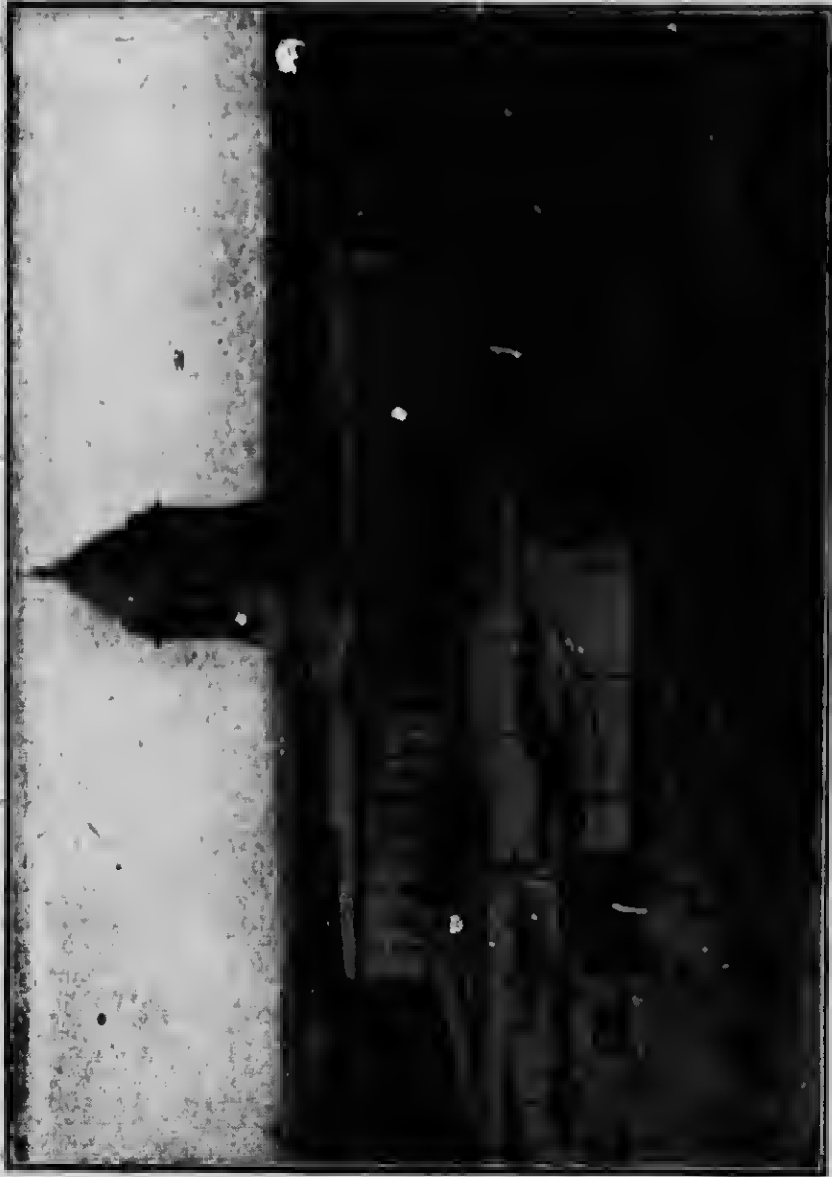
**AGRICULTURAL COLLEGE.** The Manitoba Agricultural College, opened at Winnipeg in 1906, has proved a great success. In 1913 larger quarters were secured on the Red River, just south of the city. The new buildings there, with up-to-date equipment, have cost three million dollars. The College confers the degree of Bachelor of Science in Agriculture after five winters spent in the institution, a diploma at the end of three winters; and a diploma in Home Economics after two winters' study. Annual tuition fees for residents in Manitoba, \$10; for non-residents, \$30. Charges for laboratory fees, necessary books, laundry (personal effects), and suits for dairy and workshop, amount to \$26.50. Board and room in residence at the College, \$4.25 per week. The College opens on October 28th and closes first week in April. Write for annual calendar.

**AGRICULTURAL TRAINS.** In connection with the Manitoba Agricultural College the province has established a system of agricultural trains, equipped with a special staff of instructors and lecturers, which are run over practically every line in the province.

**AREA.** Total area of Manitoba to-day is 251,832 sq. miles. In 1912 the province was extended northwest to the 60th parallel and eastward to a line drawn from the northeast angle of the original boundaries of the province to the most northeasterly portion of Island Lake, thence northeast to intersect the southern shores of Hudson Bay in longitude 89 degrees. This district is 178,000 sq. miles, i.e., over 4,000 sq. miles larger than the old province of Manitoba.

**AREA CULTIVABLE.** The province, exclusive of the northern area added in 1912 has over 30 million acres of land that can be cultivated to advantage, about 5 million of which is under cultivation. Total acreage under grain was 5,821,864 acres and total grain crop 160,232,487 bushels in 1911. In 1912 total acreage was 6,235,557 acres (see Grain Crops, page 16).

**GENERAL INFORMATION**



**Proposed Parliament buildings, Winnipeg**

**CLIMATE.** Climate conditions are uniform throughout the province. There is much sunshine. Summers are warm. Winter starts suddenly in November or December. The cold is steady, with a clear, dry atmosphere. Snow on the prairie averages 1 ft. deep. Chief rainfall is in June. According to the table compiled for Heaton's Annual by the Meteorological Office at Toronto, the mean annual temperature at different points is as follows: Brandon, 33.9; Channel Island, 30.9; Eikhorn, 33.7; Emerson, 35.9; Hillview, 32.7; Minnedosa, 34.1; Portage la Prairie, 35.2; Russell, 31.3; Sourisford, 33.8; St. Aihans, 31.4; Stony Mountain, 33.8; Treherne, 34.9; Winnipeg, 34.9. See under "Rainfall" below.

**COST OF LIVING.** The following are retail prices at Winnipeg, in May, 1913, as given in the Dominion Labour Gazette: Bacon, 35c.; beef, 16c.; bread, 5c.; butter, up to 40c.; cheese, 20c.; coal, per ton (2,000 lbs.), \$9.00 to \$11.10; coal oil, 25c.; coffee, 35c.; eggs (per doz.), 25c.; fish (fresh), 12½c.; flour, 3 1/5c.; lard, 18c.; milk (per quart), 10c.; nutmeg, 24c.; pork (salt), 18c.; potatoes (per bushel), 67c.; rice, 6c.; sugar, 6¼c.; starch, 8c.; tea, 35c.; vinegar, 10c.; wood (per cord), \$7.00. Rent varies greatly. Average rent of a house in Winnipeg of 4 to 6 rooms is \$12.00 to \$30.00.

**DOMINION HOMESTEADS—HOW TO MAKE SELECTION.** Homesteads in the prairie provinces are being rapidly taken up. Write J. Bruce Walker, Commissioner of Immigration, Winnipeg, for map showing the location of homesteads available in Manitoba, report on character of the soil and a description of any district. Choose a locality and make alternative selections of homesteads. Then apply to the Dominion Lands Agent in that locality.

**DOMINION HOMESTEAD REGULATIONS.** The land is surveyed into townships 36 miles square, divided into 36 sections of 640 acres each. Sections 11 and 29 are reserved for school purposes, sections 8 and 26 being to the Hudson Bay Co. Other sections are available for homesteading. Any person who is sole head of a family, or any male over 18 years old, who is a British subject, or declares his intention to become a British subject, or a widow with minor children of her own dependent on her for support, may, on paying \$10, obtain entry for a quarter section (160 acres more or less) of Dominion Lands in Manitoba. Applicant must appear in person at the Dominion Lands Agency or sub-agency for the district. Entry by proxy may be made at any agency for a father,

## GENERAL INFORMATION



A Typical Farm in Manitoba. See pages 45 to 77

W. A. R. Douglas  
Grand Forks, N.D.

mother, son, daughter, brother or sister, if eligible, and when duly authorized by the prescribed form. Duties: erection of a habitable house, 6 months' residence and cultivation of land in each of 3 years. A homesteader may live within 9 miles of his homestead on a farm of at least 80 acres, solely owned and occupied by him or by his father, mother, son, daughter, brother or sister, or upon a homestead entered for and occupied by them within the prescribed distance. Before applying for patent, homesteader must break 30 acres and crop 20, part of work being done each year. If residing in vicinity, as stated above, he must break 50 acres and crop 30 acres.

**EDUCATION.** A School District may be formed as soon as there are ten children of school age in a section. The Government grants to public schools consist of 65c. per day for 200 days' operation each year. In a number of cases the rural districts have been consolidated and children are conveyed to the schools from their homes. Greater efficiency is thus secured. In 1911 the attendance of the public schools was 80,848.\* There are in the province 8 free Collegiate Institutes, 6 Collegiate Departments, 14 free High Schools and 53 free intermediate schools.\* In 1911 126 teachers attended the Provincial Normal School at Winnipeg. In June, 1912, Manitoba University at Winnipeg had 12 professors, 2 assistant professors, 9 lecturers, 3 demonstrators and 746 students. See also "Agricultural College," page 3.

**FISHERIES.** The total value of Manitoba and Keewatin fisheries in 1911-12 was \$1,113,486, of which Lake Winnipeg contributed \$568,338, Lake Manitoba \$130,630 and Lake Winnipegosis \$177,689. The catch included whitefish \$362,908, pickerel \$325,644, besides pike, perch, tullibee, catfish, goldeyes, etc. It is expected that valuable sea fisheries will be developed in the Hudson Bay lately acquired by the province.

**FORESTS.** In Northwest Manitoba the true forest extends as far as Duck Mountains. There is timber for fuel and building on the eastern slope of the first steppe, and fuel is found skirting the rivers and lakes. In the extreme east the forest extends 80 miles into the province and there are some saw mills. In the west there are small forest areas. Timbered areas exist on the Turtle Mountains and the Brandon Hills. The principal trees are white spruce, black spruce, aspen (or white poplar), balm of gilead, birch, jack pine and tamarac, also sparingly, basswood, green

\*Owing to a change in the school year, later returns were not available before going to press.



Prize Shorthorns bred in Manitoba

ash, Manitoba maple, white elm and hurr or scrub oak. The Dominion lands are administered by the Department of the Interior. Area of Dominion forest reserves, 357 square miles.

**FREIGHT RATES.** The following table shows the freight rates per 100 lbs. on wheat to Port Arthur from points in Manitoba and from points in the Western Provinces, with the equivalent per acre on a crop of 20 bushels:

Winnipeg, Man.—10c.....	\$1.20 per acre
Boissevain, Man.—13c.....	1.56 per acre
Brandon, Alta.—13c.....	1.56 per acre
Edmonton, Alta.—25c.....	3.00 per acre
Lethbridge, Alta.—23c.....	2.76 per acre
Battleford, Sask.—23c.....	2.96 per acre

The following figures show the freight rates per 100 lbs. on live stock between Western Provinces and Manitoba to Winnipeg Market:

Edmonton, Alta., 40c., Virden, Man., 19c., difference 21c. on an animal of 1,400 weight, \$2.94; Lethbridge, Alta., 43c., Deloraine, Man., 20c., difference \$3.22; Calgary, Alta., 45c., Melita, Man., 19c., difference 26c., or \$3.64.

**HUDSON BAY ROUTE.** From various expert opinions, optimistic and the reverse, it may be concluded that the Route is open for navigation from about the 15th July to about 15th Oct. The C.N.R. have built a line from Winnipeg to The Pas on the Saskatchewan River. From there the Dominion Government will build a line to Fort Churchill, 465 miles, or Port Nelson, 397 miles. This route will effect an average saving of 970 miles on the distance from the Western wheat fields to the Atlantic seaboard. Distance to Liverpool from Fort Churchill is 2,926 miles; from Montreal, via Belle Isle, 2,761, and via Cape Race, 2,927 miles; from New York, 3,079 miles. Work is being actively prosecuted on the harbor at Neison. Write for pamphlet "Hudson Bay Route" to the Dept. of the Interior, Ottawa.

**IMMIGRATION—ASSISTANCE TO FARM HANDS.** The Grain Growers' Association of Manitoba has formed a \$5,000 fund to advance passage-money to farm hands and domestic servants who lack means to emigrate to Manitoba. Farmers requiring help must apply to the Department of Agriculture, either directly or through the Association, and make a deposit of \$50.50, which will be deducted from the employee's wages. The help will go straight to the farmer under the Government's direction.





Reaping Wheat in Manitoba. See paragraph headed "Wallace Municipality—Elkhorn District—  
R. De W. Waller" on page 77.

**IMPORTATIONS OF AGRICULTURAL PRODUCE.**

The following statement shows value of importations from the United States into Manitoba as shown by Customs Returns, at Winnipeg, for the fiscal year ending March 31st, 1913: Hogs, \$270; horned cattle, \$8,760; horses over 1 year old, valued at \$50 or less per head, \$275; horses, n.o.p., \$323,524; sheep, \$85,185; eggs, \$526,605; butter, \$20,670; cheese, \$4,943; bacon and hams, shoulders and sides, \$792,981; canned meats and canned poultry and game, \$46,590; extracts of beef, fluid extracts, not medicated, and soups of all kinds, \$27,525; mutton and lamb, fresh, \$33,983; pork, harrelled in brine, \$1,260; poultry and game, n.o.p., \$142,350; dried and smoked meats, and meats preserved in any other way than salted and pickled, n.o.p., \$23,402; other meats, fresh, \$45,388; other meats, salted, \$13,764; melons, \$10,300; potatoes, u.o.p., \$19,197, tomatoes, fresh, \$32,265; tomatoes and cooked corn in cans and other air-tight packages, \$43,501; vegetables and baked breads in cans and other air tight packages, n.o.p., \$36,889; vegetables, n.o.p., \$142,979. There is no official record of interprovincial trade. All the above can be grown in Manitoba. The farmers have been too busy growing wheat.

**LAKES.** The larger lakes in the province in order of magnitude are: Winnipeg, part, 3,536,000 acres; Manitoba, 1,163,000; Winnipegosis, part, 836,000; Dauphin, 128,000; St. Martin, 80,000; Shoal, 65,000; Swan, 54,000; Waterhen, 53,000; Dog, 41,000; Lake of the Woods, part, 38,200; Ehh and Flow, 25,000 acres.

**MANUFACTURES.** According to 1912 returns of the Dominion Census office the value of Manufactures in Manitoba was \$12,927,439 in 1900, \$53,673,609 in 1910—an increase of 315.19 per cent.

**MINING.** Cement is being manufactured at Bahcock, s. of Winnipeg, Gloucester County. Good brick clays in unlimited quantity are obtainable from the shales of the Pierre Series. Cement materials east of Lake Winnipeg and near Arnold. Several seams of lignite or brown coal have been found on the northern flank of Turtle Mt. in the southwestern part of the province, but no active mining has been undertaken. Large deposits of gypsum have been found in the townships lying north of Lake St. Martin. The deposits are worked by the Manitoba Union Mining Company. The crude gypsum is shipped from the mines (Gypsumville) north of Lake Winnipeg.

where it is ground and calcined and sold as wall plaster. Salt is found at Salt Creek west of Lake Dauphin, Salt Point, south end of Lake Winnipegosis, at mouth of Swan River and many other places.

**MOUNTAINS.** The mountain elevations are the Porcupine, the Duck and the Riding Ridges in the west; the Turtle and the Tiger Hills in the south. The highest point in Manitoba is in the Porcupine Mountains, 2,500 feet.

**NORTHERN MANITOBA.** The new District added to Manitoba (see under Area) contains Port Nelson and Fort Churchill, the only two ports of Hudson Bay. It is practically unexplored, but is known to contain large areas of clay land where vegetables and barley do well and wheat can be grown, also merchantable timber, pulpwood, iron, gold, copper, and other minerals. Write for pamphlets, "The New Northwest" and "The Hudson Bay Route," to the Secretary of the Dept. of the Interior, Ottawa.

**POPULATION.** According to the Dominion census returns, the population of the province was: In 1881, 62,260; in 1891, 152,506; in 1901, 255,211; in 1911, 455,614; of which 250,056 were males, 205,558 females. Between 1901 and 1911 the rural population increased 70,511; the urban 129,892.

**RELIGIONS.** In 1911 there were in Manitoba 86,578 Anglicans, 13,792 Baptists, 2,997 Congregationalists, 31,042 Greek Church, 10,636 Jews, 32,730 Lutherans, 15,600 Mennonites, 65,897 Methodists, 103,621 Presbyterians, 73,994 Roman Catholics.

**NATIONALITIES.** In 1911 the chief nationalities represented were: British 266,415, French 30,944, German 34,530, Austria-Hungarian 39,665, Belgian 2,453, Dutch 2,853, Indian 7,876, Italian 16,277, Jewish 10,741, Polish 12,310, Russian 7,761, Scandinavian 16,419.

**RAILWAY TRANSPORTATION.** Manitoba had 1,900 miles of railway in 1910, over 4,000 miles in 1912\*. It is crossed by three transcontinental lines: the C.P.R., C.N.R. and G.T.P. (See also under Hudson Bay Route).

**RAINFALL.** According to the table compiled for Heaton's Annual, 1913 edition, by the Meteorological Office in Toronto, the average annual rainfall in inches at different points is as follows: Brandon, 17; Channel Island, 17; Elkhorn, 17; Emerson, 22; Hillview, 22; Minnedosa, 17; Portage la Prairie, 17; Russell, 17; Sourisford, 14; St. Alhans, 17; Treherne, 17; Winnipeg, 21.

\*Returns for 1913 not available before going to press.

## GENERAL INFORMATION

13

**RIVERS.** The rivers all run from the eastern and western sides of the province to the lower levels in the middle, draining into Hudson Bay. The principal rivers are: Red, Assiniboine, Winnipeg, Pembina, all having several tributaries.

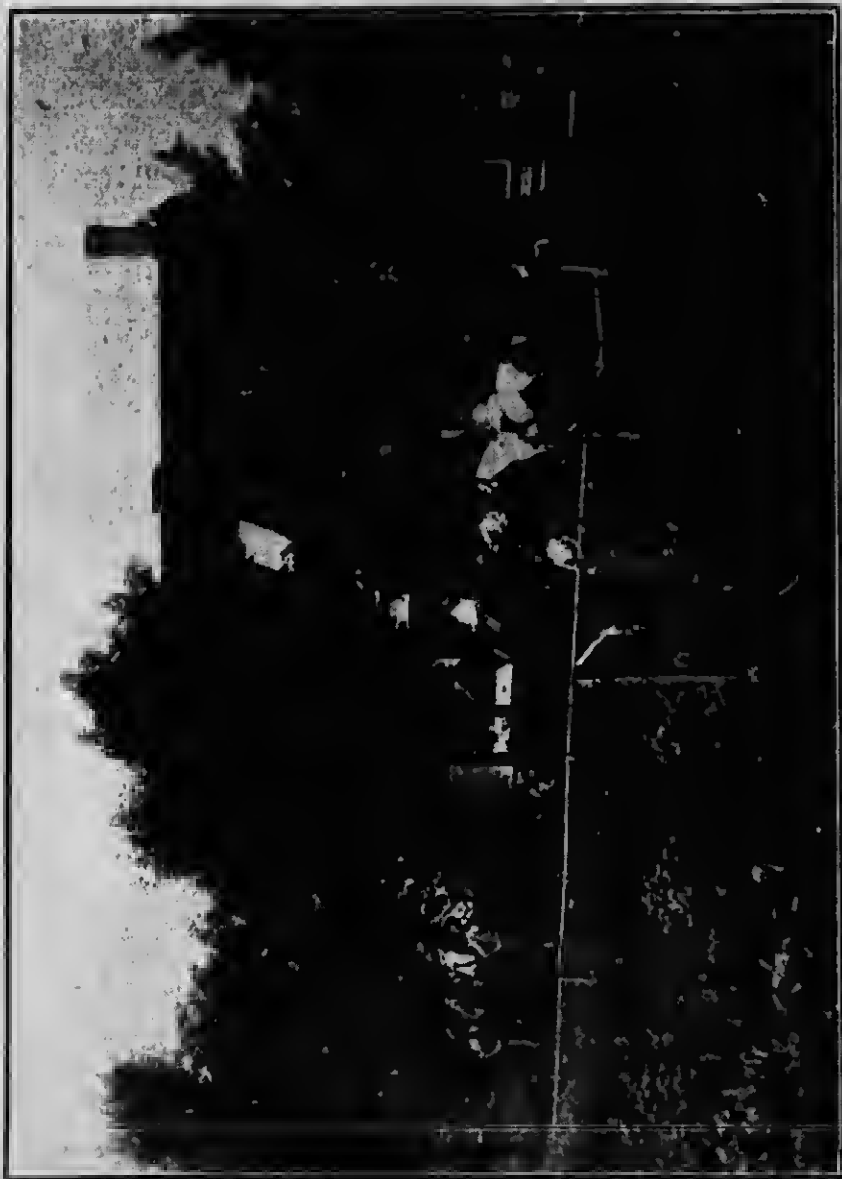
**SCHOOL LANDS.** These comprise Sections 11 and 29 in every township in Manitoba, that is, approximately. They are administered by the Dominion Government in trust for the province and can only be disposed of by sale at public auction to the highest bidder, subject to a certain upset price. The area of school lands sold in Manitoba up to 1st April, 1913, was 641,179.76 acres for \$6,237,398.33, or an average price of \$9.73 per acre. The area remaining unsold at that date was approximately 7,500,314 acres. The revenue from school lands is invested in Dominion securities and the interest thereon paid annually to the provinces for educational purposes.

**SALES.** Sales are held yearly, provided the conditions are favorable, the lands being first inspected and valued to determine the upset price. Terms: One-tenth cash and balance in nine equal instalments, with interest at 5%. Scrip or warrants are not accepted in payment. There are no settlement conditions.

**LEASES.** Leases of these lands are issued for the following purposes: For coal mining for a term of twenty-one years, at a rental of \$1.00 per acre and subject to a royalty of five cents per ton; for petroleum and natural gas for twenty-one years, subject to a payment of rental for the first year at 25 cents per acre and at the rate of 50 cents per acre for the subsequent years; for fire clay for a term of twenty-one years, subject to rental at a rate of \$1.00 per acre, not more than forty acres being leased to any one person; for hay purposes for a term of five years, subject to the payment of rental at the rate of 25 cents per acre.

**PERMITS.** Permits are issued for the purpose of grazing stock on School Lands, covering one year ending the 1st of April, but renewable from year to year at the option of the Department. The rental under such permits is six cents per acre in Manitoba.

**SPORT.** The black bear is common in wooded parts. Coyotes are abundant generally. Virginia, or white deer, are found across Northern Manitoba, weight about 300 lbs. Mule deer are only occasionally found in the province, average weight 275. Antelope, at one time common, are no longer found in Manitoba. Wapiti, or elk, found in the northwestern and central portions of the province, are said



Apples, Crabapples and Plums are successfully cultivated in the Morden District.  
See Morden and Stanley Rural Municipalities on pages 32 and 57.

to be more numerous now than at any time during the past fifty years. The full-grown huck weighs 600 lbs. and occasionally over 1,000 lbs. The woodiand carihoo is found in wooded districts in the northeasterly portion. It is intermediate in size between the elk and the white tail deer. Lynx and wild cat are found throughout the wooded parts. Foxes are abundant. Wolves are common. Beaver are increasing annually. The Canadian goose, the North or Brant goose and the Wavy or White goose are the most common breeds. Of duck, mallard, canvas-back, widgeon, teal, blue hill, red head, merganser, and spoon hill are found in White Water Lake, White Mud Lake, Plum Lake, Maple Lake, Oak Lake, Lake Manitoba and Lake Winnipeg, as well as other waters. Prairie chicken are common. Partridge (wood grouse) are found in the wooded districts.

**WAGES.** Agricultural Laborers: Receive \$25 to \$40 a month with board in the summer months; \$10 to \$20 in winter. In harvest time skilled harvest men receive \$30 to \$50 or \$2 to \$3 a day, subject to deduction on account of wet weather. General Laborers: \$2 to \$3 a day without board. Lumbermen in logging camps \$30 a month with board. Mechanics: At Winnipeg as follows: Bricklayers and masons 70c. per hour, with a 7 or 8 months' season; plasterers, 65c.; carpenters, 35c. to 55c.; sheet metal workers, 45c.; tailors, coats, \$27 per week; pants and vests, \$8 to \$10 per week; compositors, minimum per week of 48 hours, in news offices, \$25; in job offices, \$20. Domestic: Cook, general, \$15 to \$35 a month, with board and lodging.

## Agriculture

**ALFALFA.** The Department of Agriculture has established 20 demonstration plots of half an acre each and upward in various parts of the province, with satisfactory results in every case. Many farmers are making this crop one of their staple products. In 1912, 13,806 tons of clover and alfalfa were obtained from 6,572 acres. Apart from its value as a cured fodder it forms a most desirable pasture.

**BEEKEEPING.** The luxuriant vegetation, and the increasing cultivation of a number of varieties of clover, make bee culture easy and profitable. The market is large in the home cities. The highest record at the Provincial Department of Agriculture is 9 lbs. per day for 10 to 14

days, and 120 lbs. per year. The industry is largely on the increase.

**CATTLE.** There is an increasing demand for stockers. An immense crop of coarse grains and fodder is easily raised. With a greater supply of help greater attention will be paid to feeding fat cattle. The Manitoba Cattle Breeders' Association hold an annual sale of pure-bred cattle at Brandon. In 1912 there were 429,274 cattle in the province, and by June, 1913, the number had increased to 456,936. All live stock is on the increase.

**CHAMPION STEERS.** Glencarnock, the big Angus steer, declared the champion of the 1912 International Live Stock Exposition at Chicago, was reared by J. B. McGregor, of Brandon, Man.; weight 1,412 lbs. This steer was sold for 50c. per lb. on the hoof. At the Dominion Fair at Brandon, 1913, Manitoba took 1st prize and gold medal for the best 10 beef cattle exhibited by any province.

**DAIRYING.** The dairy industry is expanding, and in 1913 a substantial increase of creamery butter is expected. In 1912 the output of creamery butter was 2,931,138 lbs.; value, \$820,718.64; average price per lb., 28c. Dairy butter, 4,333,905 lbs.; value, \$1,014,158.14; average price per lb., 23.4c. Cheese, 536,618 lbs.; value, \$69,760.34; average price per lb., 13c. Total value of dairy products, \$1,904,637.12. In 1911, the output of dairy butter was 4,547,827 lbs.; creamery butter, 3,090,579 lbs.; cheese, 560,725 lbs. The decrease in the 1912 output is accounted for by the increasing consumption of cream and milk, as such, in the city of Winnipeg, the value of which in 1912 was at least \$750,000.

**FLAX.** The high prices prevailing for flax induced many farmers to sow more of it in 1912 than in other years. In 1912, 196,315 acres were under crop as against 85,836 acres in 1911 and 41,002 acres in 1910. The area under crop in 1913 was 115,054 acres.

**FODDER CROPS.** Of cultivated grasses the yield in the province in 1912 was: Brome, 47,337 tons from 25,152 acres, average 1.8; rye, 28,315 tons from 17,473 acres, average 1.6; timothy, 192,783 tons from 114,899 acres, average 1.6; clover or alfalfa, 13,806 tons from 6,572 acres, average 2.1. In 1913 an increase of over 17,000 acres in grasses and clovers was recorded.

**FRUIT GROWING.** Plums, currants, raspberries and strawberries do well. Crabapples are plentiful, and some varieties of larger apples have grown to maturity and do

well, producing good returns. Over 40 varieties are now grown at Nelson by A. P. Stevenson.

**GRAIN CROPS, 1912.** The estimate of the yield of the four principal grain crops of Manitoba, prepared from returns received by the Department of Agriculture of the province from about 770 correspondents, is as follows.

	Acres sown.	Bushels per acre.	Yield, hushels
Wheat...	2,823,362	20.7	58,433,579
Oats....	1,939,982	46.0	87,190,677
Barley...	962,928	35.1	33,795,191
Flax.....	196,315	13.6	2,671,729

In 1911 the total yields of the four grains were: Wheat, 61,058,786 hush., average per acre, 18.29. Oats, 73,786,683 bush., average 45.3. Barley, 23,999,239 hush., average 31.5. Flax, 1,205,727 hush., average 14.0. The total grain crop of 182,357,494 hushels in 1912 shows an increase of about 22,000,000 bushels over the total in 1911.

**HORSES.** The Clydesdale breed predominates. There are many Percherons, Shires and Standard Bred horses. Many horses are imported from Ontario. In 1912 the horses in the province numbered 273,395. Present prices run high. A good pair of Clydesdales will bring \$600.

**POULTRY.** In 1912 farmers disposed of 167,438 turkeys, 71,951 geese, and 779,850 chickens. Insufficient eggs are produced for home consumption; imports from Ontario and Minnesota are large. Some turkeys and chickens are imported from Ontario. Of hens, Plymouth Rocks, Wyandottes, Rhode Island Reds and Orpingtons are best adapted to withstand the Western winter; of ducks, the Pekin, Rouen and Indian Runner do best; of geese, the Embden and Toulouse, and of turkeys, the Mammoth Bronze are the most commonly raised.

**ROOTS AND VEGETABLES.** Potatoes, parsnips, carrots, cucumbers, cabbages and cauliflowers grow to a very large size. Root crops are not largely grown for feed. In 1912, 10,734,612 hush. of potatoes were grown from 51,878 acres, an average of 206 hush. to the acre. Of other roots, 3,895,118 hush. were grown from 14,109 acres, an average of 276 hushels to the acre.

**SHEEP.** It is doubtful if there are more sheep in the province than there were 20 years ago. This is attributed to the loss from prairie wolves, and the expense of proper fencing, which necessitates the maintenance of large flocks. The Winnipeg market is supplied chiefly from the Western ranches and New Brunswick. Shropshires and Leicesters





Marrows grown in the Red River Valley, see page 77.

are the popular breeds. Total sheep in province, 37,227 in 1911. Average annual wool clip, 135,500 lbs.

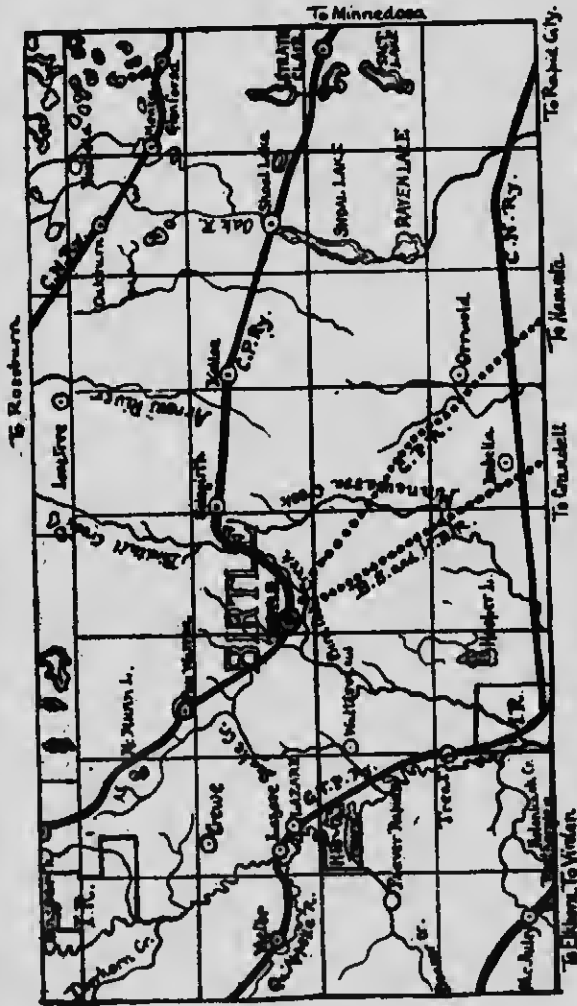
**SWINE.** With the development of mixed farming more hogs are being raised. In 1911 the number of hogs in the province was estimated at 192,386. The daily average received at Winnipeg is about one-sixth of the capacity of the four packing houses at Winnipeg, which partially supply the requirements of the province. The most common breeds are Berks, Yorkshires and Tamworths.

**THRESHING OUTFITS IN OPERATION.** In 1912, 3,686 threshing outfits were employed in the province, as compared with 3,193 in 1911.

**WHEAT.** The ideal temperature for wheat is a mean summer temperature of 60 degrees. This extends as far as latitude 65 degrees. The greatest yield is nearest the northern limit of successful growth. Wheat from Fort Chipewegan at latitude 59 took first prize in Philadelphia in 1876. Wheat from the Peace River Valley took first prize in the World's Columbian Exhibition at Chicago in 1893. In the northern latitudes four and five grains are found to the cluster, as against two grains usual in the wheat fields of the United States. This is due to the winter frosts, summer rains and the soil, of which the chief ingredients are nitrogen, potash and phosphoric acid.

**SPRING WHEAT.** The leading varieties are Red Fife and Marquis, which grade hard and are known as Manitoba Hard Wheat. They fetch a higher price than any other varieties grown. The Marquis, a recent development, matures about 15 days earlier than Red Fife. A crop of over 81 bushels to the acre is reported at the Dominion Government Experimental Farm at Indian Head. This variety won first prize for the best bushel of wheat grown in America at New York in 1911 and at Lethbridge in 1912. Prelude wheat, an extraordinarily early variety, has given excellent results at the Experimental Farms and is likely to become popular. The following is a comparison of official returns of the leading Wheat States of the Union and the Prairie Provinces. Average yield in bushels per acre for period 1901 to 1911: Dakota, N., 11.7; Dakota, S., 11.9; Iowa, 16.2; Kansas, 13.4; Minnesota, 13.2; Nebraska, 17.5; Washington, 22.4; Wisconsin, 16.8; average yield, 1901 to 1911, in Alberta, 19.87; in Saskatchewan, 19.34; in Manitoba, 18.65 bushels.

# BIRTLE the Beautiful and Bountiful



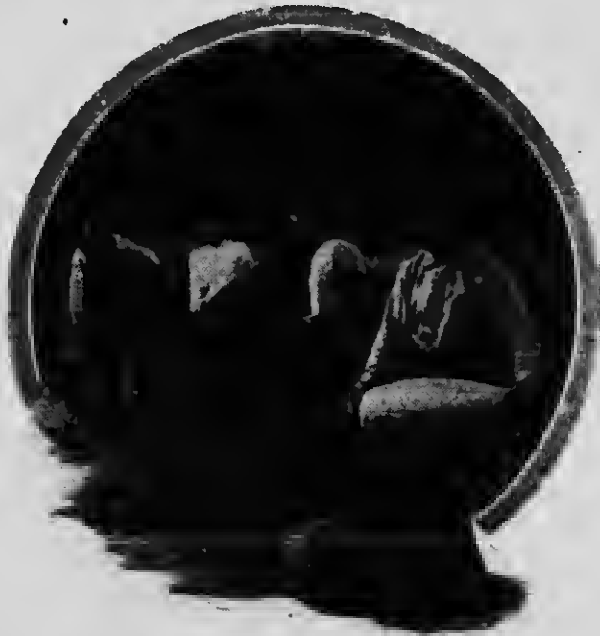
The best mixed farming district in Western Canada  
 For opportunities offering at Birtle read description on page 24, and see descriptions of Birtle and Ellise Rural Municipalities on pages 60 and 61.

Write for further information to

Secretary, Birtle District Board of Trade, Birtle, Manitoba

**WINTER WHEAT.** Sown in August, it grows to 6 or 8 inches in the fall, passes through winter without damage and is ready for the reaper from the 1st to 15th of August. In Alberta and in some parts of Manitoba and Saskatchewan it is accounted a safe annual crop. The area found capable of growing this grain successfully is every year extending northward. The leading variety is Alberta Red, which was grown originally from Turkey Red Wheat introduced from Kansas.

**PROFIT PER ACRE BY CONTRACT WORK.** The following estimate is regarded as fair by practical men to whom it has been submitted. It shows the cost and profit per acre on a crop of wheat on say 25 acres: Preparing land for seeding, \$4; drilling, 20c.; binder harvesting, 75c.; threshing and delivering 1 acre of 22.50 bushels at 8c., \$1.80; entire cost of wheat crop delivered to the elevator, \$6.75; add interest 8% on land at \$20 per acre, \$1.60; taxes (land, school and road) per acre, about 20c.; total cost per acre say \$8.50; profit crop average say 22.50 bushels per acre at 75c., \$16.87. Net profit per acre clear of all expenses, \$8.37.



## Travel Distances from Winnipeg

### Mileage by Nearest Route

Atlanta, Ga., 1,594  
 Berlin, Ger., 5,522  
 Boston, 1,754  
 Buffalo, 1,390  
 Chicago, 863  
 Cleveland, 1,207  
 Constantinople, 8,756  
 Denver, Colo., 1,345  
 Detroit, 1,135  
 Dublin, 4,436  
 Duluth, 325  
 Glasgow, 4,624  
 Hong-Kong, 8,167  
 Liverpool, 4,659  
 London, Eng., 4,859  
 Minneapolis, Minn., 453

Montreal, 1,424  
 New Orleans, 1,704  
 New York, 1,810  
 Ottawa, 1,304  
 Paris, 5,141  
 Pittsburg, 1,340  
 Portland, Me., 1,721  
 Quebec, 1,596  
 St. Louis, 1,034  
 St. Paul, Minn., 453  
 St. Petersburg, 6,538  
 San Francisco, 2,318  
 Seattle, Wash., 1,547  
 Sydney, 9,326  
 Toronto, 1,287  
 Washington, 1,838

### To Canadian Points West of Winnipeg

Banff, Alta., 919  
 Brandon, Man., 133  
 Calgary, Alta, 837  
 Camrose, Alta., 778  
 Canora, Sask., 302  
 Cardston, Alta., 824  
 Carman, Man., 52  
 Castor, Alta., 1,036  
 Cranbrook, B.C., 958  
 Dauphin, Man., 178  
 Edmonton, Alta., 792  
 Edson, Alta., 922  
 Estevan, Sask., 298  
 Fernie, B.C., 895  
 Field, B.C., 974  
 Grand Forks, B.C., 1,202  
 Greenwood, B.C., 1,225  
 High River, Alta., 858  
 Hosmer, B.C., 888  
 Humboldt, Sask., 425  
 Indian Head, Sask., 316  
 Kamloops, B.C., 1,233  
 Killarney, Man., 165  
 Lacombe, Alta., 950  
 Lethbridge, Alta., 758  
 Macleod, Alta., 790  
 Medicine Hat, Alta., 657  
 Melville, Sask., 279  
 Minnedosa, Man., 134

Moose Jaw, Sask., 399  
 Moosomin, Sask., 219  
 Morden, Man., 81  
 Nanaimo, B.C., 1,632  
 Neepawa, Man., 116  
 Nelson, B.C., 1,095  
 N. Battleford, Sask., 572  
 Phoenix, B.C., 1,213  
 Portage la Pr., Man., 54  
 Prince Albert, Sask., 541  
 Red Deer, Alta., 931  
 Regina, Sask., 357  
 Revelstoke, B.C., 1,104  
 Rossland, B.C., 1,150  
 Salmon Arm, B.C., 1,167  
 Saskatoon, Sask., 466  
 Sicamous, B.C., 1,149  
 Souris, Man., 150  
 Stettler, Alta., 1,000  
 Swift Current, Sask., 509  
 Taber, Alta., 726  
 Vancouver, B.C., 1,483  
 Vernon, B.C., 195  
 Victoria, B.C., 1,560  
 Wainwright, Sask., 666  
 Watrous, Sask., 408  
 Wetaskiwin, Alta., 978  
 Weyburn, Sask., 314  
 Yorkton, Sask., 278

## Boards of Trade Register

When Writing to a Local Reference, Mention  
Should be Made of Heaton's Annual

*This Gazetteer is revised every year and includes certified official returns from local Boards of Trade and the municipal authorities of towns where no Board of Trade is established. Information is given generally as received. The Editors reserve the right to use information obtained from other reliable resources and to edit the returns made, but they cannot, for obvious reasons, from their own knowledge, vouch for the absolute accuracy of every detail in each case. As a general rule, entries in this register are confined to towns over 400 population in the West. Exceptions are made in special cases. Where possible, a reliable local reference is given, who will supply further information upon request.*

**ABBREVIATIONS.**—Tel., Telegraph; Ex. Express; m., miles; Pop.,\* Population according to Returns of Census, 1911; Pop., estimate of Mayor or local Board of Trade. Alt., Altitude—ft. above the sea level. Altitudes are given as furnished by the Dominion Meteorological Office of Toronto.

Chief Town of County Judicial District marked ¶  
Towns represented among Illus. Advertisements marked †

**ALEXANDER**, on C.P.R., 149 miles w. of Winnipeg. Hotel, Grandview \$2, restaurant, 3 churches (Ang., Pres., Meth.), 1 school, 4 elevators, (159,000 bushels), telephone, lumber yard, livery stable, several stores, 1 bank. Pop. 500.

**SPECIAL OPPORTUNITIES.**—Grist mill, general store.

**ALTONA**, on C.P.R., 64 miles from Winnipeg. Hotel, 4 elevators (151,000 bushels), flour mill, telephone, bank, 2 livery stables. Pop. 450.

**SPECIAL OPPORTUNITIES.**—Druggist, tailor. Write Sec.-Treas. Rhineland Municipality, Altona.

**BALDUR**, on C.N.R. branch line. C.N.R. Ex. Tel. C.N.R. 60 miles s.e. of Brandon. Hotel, Baldur. 4 churches, intermediate school, 1 bank, 3 elevators. Large shipments of cattle and horses. A local option town. Alt. 1,408. Pop. 450.

**SPECIAL OPPORTUNITIES.**—Dairying, veterinary surgeon. Write Sec. Bd. Trade.

†**BEAUSEJOUR**, on C.P.R. between Kenora and Winnipeg, 35 miles. Dom. Ex. Tel. C.P.R. Government telephones. Hotels, King Edward, Beausejour \$1.50. 4 churches (R.C., Luth., Ang. and Pres.), public school, elevator, pressed brick co. and glass factory. Electric power. A good farming country. Pop. 847. Write Sec. Bd. Trade.

**BINSCARTH**, on C.P.R., 155 miles from Portage la Prairie, Dom. Ex. Tel. C.P.R. Hotel, Royal \$2. 3 churches, school, bank, 4 elevators (250,000 bushels), lumber yard, livery stable, 2 blacksmiths, garage, 2 doctors, 2 drug stores, 2 general stores and 8 others. Pop. 459.

**SPECIAL OPPORTUNITIES.**—Tailor. Write Agent C.P.R.

†**BIRTLE**, on Bird Tail Creek, 195 miles w. of Winnipeg, on C.P.R., Man. N.W. Ry., and C.P.R. Hamiota Branch. Dom. Ex. Tel. C.P.R. 2 hotels. 4 churches, consolidated public school, Indian Industrial School, 2 banks, local and long distance telephone, town lighted by gas, 4 elevators, flour and grist mill, machine shop, 2 lumber yards, newspaper, 3 livery stables, moving picture show, spring water, no saloons. An ideal mixed farming district. Pop. 550.

**SPECIAL OPPORTUNITIES.**—Strawboard factory, flax mill, creamery, development of water power on Bird Tail Creek. See Birtle and Ellice Municipalities under "Rural Municipalities," and Illus. Advt. Write Sec. Bd. Trade.

†**BOISSEVAIN**, on C.P.R. and G.N.R., 48 miles s. of Brandon. Dom. Ex., G.N.R. Ex. Tel. C.P.R. and G.N.W. Hotels, Ryan House \$1.50, Queen's \$2.00. 5 churches, good high school, 2 banks, 4 elevators, 1 mill, electric light. A fine wheat-growing district. Alt. 1,683. Pop. \*918.

**SPECIAL OPPORTUNITIES.**—Brick plant, flour mill (300 bbls. daily) for sale. Write Sec. Bd. Trade.

**BRANDON**, on Assiniboine River, 133 miles w. of Winnipeg, on C.P.R., C.N.R., G.T.P.R., G.N.R. Dom. Ex., C.N.R. Ex., Can. Ex. Tel. C.P.R., C.N.R., G.N.W. Hotels, Prince Edward of C.N.R., Cecil, Empire, Imperial and 12 others. 16 churches, Brandon College affiliated with Baptist University at Toronto, Ladies' College, business college, Normal School, collegiate institute, 6 public schools, separate school, convent, Ruthenlan Training School, Indian Industrial School, Land Titles office, general hospital, Provincial Asylum, Court House,

10 banks, 3 daily papers, motor fire department, 28 miles water mains, 23 miles sewers, 29 miles granolithic sidewalks, electric street railway owned by city, electric light and power plant, central steam heating plant, gas and power plant. Industries include flour, oatmeal, gasoline engines, grain grinders, windmills, pumps, fire engines, portable sawing machines, steel plate hot-air furnaces, trip hammers, store counters, show cases, school desks, church pews, pulpits, sashes and doors, leather, harness, saddlery, tents, mattresses, lightning rods, fanning mills, corduroy coats, furs, hats, guide belts, bricks, cement blocks, fireworks, lenses for eye glasses, cigars, butter, cheese, confectionery, ice cream, breweries, temperance beverages, etc. Nearly all the important farm implement manufacturers of Canada and the U.S.A. have distributing houses. 20 wholesale houses. Centre of a rich agricultural district; including 289 small towns, villages and hamlets. Pop. 17,280.

**SPECIAL OPPORTUNITIES.**—Manufacture of soap, boots and shoes, hats, brooms, paints, mattresses, implements, carriages and automobiles, sewer pipe and bricks, biscuits, cereals, cans, strawboard, tannery, canning plant. Openings in almost every line. Write Commissioner, Brandon Commercial Bureau.

†**CARBERRY**, on C.P.R. and C.N.R., 28 miles e. of Brandon. Dom. Ex., C.N.R. Ex. Tel. C.P.R. and C.N.R. Hotels, Western, Royal, Alexandra. 3 churches, public and high schools, 3 banks, 4 elevators, flour mill (not operated), 2 planing mills, 2 newspapers, 4 livery stables, 2 general stores. Town owns electric light plant and waterworks system. Good farming district. Alt. 1,258. Pop. \*878.

**SPECIAL OPPORTUNITIES.**—150 hbl. flour mill for sale. Fruit stores, implement dealers, blacksmiths. Write Sec. Bd. Trade.

†**CARMAN**, on Boyne River and C.N.R., C.P.R. and G.N.R., 58 miles s.w. of Winnipeg. Dom. Ex., C.N.R. Ex. Tel. C.P.R. and C.N.R. Hotels, Victoria \$2, Starkey \$2. 5 churches, high school, opera house, dist. office Man. Govt. telephones, Land Titles office, hospital, 3 banks, fine park. Town owns water, sewerage and electric light systems. 4 elevators, tile and sewer pipe works, flour mill, 2 newspapers, creamery, 4 livery stables, sash factory. Alt. \*72. Pop. 1,500.

**SPECIAL OPPORTUNITIES.**—Flour mill, wire fence factory, brick yard, steam laundry, cement works (large



marl deposits 18 miles), paint works, foundry. Town offers free sites for factories and exemption from taxes. Write Sec. Bd. Trade.

†**CARTWRIGHT**, on C.P.R., 149 miles from Winnipeg. Dom. Ex. Tel. C.P.R. Hotel. 3 churches, intermediate school, 3 elevators (85,000 bushels), hank, newspaper, creamery, livery stable, laundry, automobile livery and garage. Pop. 400.

**SPECIAL OPPORTUNITIES**.—Grist mill, dentist, veterinary, carpenter, tailor. Write Clerk of Municipality or Sec. Bd. Trade.

**CRYSTAL CITY**, on C.P.R., 130 miles s.w. of Winnipeg, on Crystal Creek. Dom. Ex. Tel. C.P.R. Hotel, Manitoba \$2. 4 churches, 2 hanks, 5 elevators (171,000 bushels), newspaper, livery stable. Duck shooting at Rock Lake, 12 miles. Alt. 1,513. Pop. 630.

**SPECIAL OPPORTUNITIES**.—Brick and cement plant, dentist. Write Sec. Bd. Trade.

**CYPRESS RIVER**, on C.P.R., Souris branch, 95 miles w. of Winnipeg. Dom. Ex. Tel. C.P.R. Hotel, Clarendon. 3 churches, 5 elevators (150,000 bushels), lumber yard, newspaper, 2 livery stables, 1 hank, 1 high school. Alt. 1,232. Pop. 500.

†**DAUPHIN**, on Vermilion River and C.N.R., 178 miles n.w. of Winnipeg. C.N.R. Ex. Tel. C.N.R. Hotels, King's, Grand View, C.N.R., \$1.50, \$2. 7 churches, collegiate and 2 public schools, hospital, opera house, 4 hanks. Town owns elec. light, gravitation water system and sewerage. Flour mill, saw mill, 4 elevators, 2 machine works, creamery, 2 sash and door factories, mineral water factory. rink. Good fishing in Lakes Dauphin and Winnipegosis; big game in Riding Mountain Forest Reserve. Pop. 5,000.

**SPECIAL OPPORTUNITIES**.—Dauphin has raw material for cereal mills, biscuits, furniture, tannery, glue, binder twine, cheese, butter, brewery, soap, strawboard, pulp, bricks, pickles, packing house. Write Sec. Bd. Trade.

†**DELORAINÉ**, on C.P.R., 202 miles s.w. of Winnipeg. Dom. Ex. Tel. C.P.R. Hotels, Palace \$1.50, Revere House \$1.50. 2 banks, 5 churches, school, machine shop, shoe factory, gas co., 1 flour mill, 6 elevators, newspaper. Alt. 1,644. Pop. \*808.

**NOTE**.—C.N.R. Greenway Extension to be completed to Delorainé in 1914.

**SPECIAL OPPORTUNITIES**.—Elec. light plant, general store, dressmaker, creamery. Write Sec. Bd. Trade.

## AND LOCAL OPPORTUNITIES

27

**DOMINION CITY**, on Rousseau River and C.P.R., 58 miles s. of Winnipeg. Hotel, Queen's \$1.50. 3 churches, school, opera house, 1 bank, 4 elevators (80,000 bushels), 1 flour mill, telephone, newspaper, 2 livery stables. Alt. 787. Pop. 500.

**SPECIAL OPPORTUNITIES.**—Creamery, lawyer, haker, dentist.

**ELGIN**, on C.N.R., 167 miles s.w. of Winnipeg. C.N.R. Ex. Tel. C.N.R. Hotel, Elgin. 1 bank, 5 churches. Alt. 1,530. Pop. 500.

**ELKHORN**, on C.P.R. main line, 200 miles w. of Winnipeg. Dom. Ex. Tel. C.P.R. Abundant supply of good water, 8-roomed high school, large industrial school, county court, bank, 3 churches, printing office. Hotels, Rosebery \$1.50, Manitoba. 2 lumber yards, 3 implement agents, 2 livery stables, garage, drug store, municipal telephone, cement sidewalks, agricultural society, grist mill, 3 elevators, shipping, 400,000 bushels in 1911-1912. A fine mixed farming district. A.F. & A.M., C.O.F. and I.O.O.F. societies. Race track, rifle association, lawn tennis and cricket clubs. Alt. 1,630. Pop. 600. See Wallace Municipality under "Announcements" on page 77, and illus. Advt. Write J. Mooney, Sec. Bd. Trade, Elkhorn.

**NOTE.**—Proposed main line of G.W.R. is shown to touch Elkhorn with branch from N. Dakota.

**ELM CREEK**, on C.P.R. Souris line and branch to Carman, 46 miles w. of Winnipeg. Hotels, Grandview, Wayside. 4 churches (Ang., Pres., Meth., R.C.), 1 school, 3 elevators (70,000 bushels), 1 bank, 2 livery stables, restaurant, laundry, 4 general stores, 8 others. Pop. 400. Write Clerk of Grey Municipality, Elm Creek.

**EMERSON**, on Red River and C.P.R., C.N.R., G.N.R., N.P.R., and Soo line. Dom. and C.N.R. Ex. Tel. C.P.R., C.N.R. Hotels, Russell House \$1.50, Anglo-American \$1.50. 5 churches, 2 public schools, bank, elevator, farming, dairying and ranching, cement block plant, lumber yard, 2 livery stables, 10 stores, newspaper. Alt. 792. Pop. 1,055.

**SPECIAL OPPORTUNITIES.**—Dentist, contractor, creamery. Write Town Clerk.

**GILBERT PLAINS**, on Valley River and C.N.R., 198 miles n.w. of Winnipeg. C.N.R. Ex. Tel. C.N.R. Govt. 'phone, long dist. local and rural. Hotels, Commercial, King Edward \$1.50. 3 churches, consolidated

**ELKHORN, IN THE FAMOUS  
HARD WHEAT BELT**

Elkhorn is situate in the famous hard wheat belt of Western Manitoba. Crop failures are unknown. A mixed farming district. Virgin lands can be bought at a reasonable figure near Elkhorn. Read descriptions of Elkhorn and Wallace Municipality on pages 2, and 76, and write

**SECRETARY, Board of Trade, ELKHORN, MAN.**

school, brick yard (cap. 3½ millions), newspaper, creamery, lumber yard, 3 livery stables, 4 elevators (130,000 bushels), 2 banks. Plan is projected to make an artificial lake for power and picturesque resort. Neighborhood supplies marl brick clay, spruce, tamarack, poplar. Big and small game. Alt. 1,314. Pop. 575.

**SPECIAL OPPORTUNITIES.**—Flour mill, beet sugar factory. Abundant water power available, easily developed. Write Sec. Bd. Trade.

¶**GIMLI**, on Lake Winnipeg, on C.P.R., 59 miles n. of Winnipeg. Elec. Ry. to Selkirk, 37 miles. Dom. Ex. Tel. C.P.R. Hotels, Lakeview, Gimli. 2 churches (Luth., Unit.), high school, Govt. telephone, 10 lumber yards, newspaper, 3 livery stables, 4 stores, park. Large quantities of wood from mills on the Lake are brought here and reshipped. Pop. 600.

**NOTE.**—\$30,000 school will be completed in 1914.

**SPECIAL OPPORTUNITIES.**—Saw mills, planing mills, lawyer, bank. Write Sec.-Treas. of village.

¶**GLADSTONE**, on C.P.R. and C.N.R., 35 miles from Portage la Prairie. Ex. and Tel. C.N.R. Hotels, Alhambra and Travelers \$1.50. 4 churches, public school, 2 banks, 3 elevators, sash and door factory, brick factory, flour mill, machine shop, creamery, telephone, 2 livery stables, newspaper. Alt. 884. Pop. 782. Write Sec. Bd. Trade.

¶**GLENBORO**, on C.P.R., 105 miles s.w. of Winnipeg. Dom. Ex. Tel. C.P.R. Hotels, Leland, Queen's. 4 churches (Ang., Pres., Luth., Meth.), 3 elevators (90,000 bushels), telephone, lumber yard, 2 banks. Alt. 1,231. Pop. \*400.

¶**GRAND VIEW**, on C.N.R. main line, 30 miles w. of Dauphin. C.N.R. Ex. and Tel. 5 elevators, lumber mill (120,000 ft. per day), machine shop, 2 banks, hotel, intermediate schools, \$10,000 theatre, waterworks, sewers, granolithic sidewalks. Centre of fertile farming district. Duck Mountains on north, heavily timbered, abounding with game. Alt. 1,431. Pop. \*637.

**SPECIAL OPPORTUNITIES.**—Brick yard, grist mill, creamery, stave factory, box factory. Write Mayor or Sec. Bd. Trade.

¶**GRETNA**, on C.P.R. and Midland div. G.N.R., 70 miles from Winnipeg. Dom. Ex., C.N.R. Ex. Tel. C.P.R. and G.N.R. Hotels, Queen's, Anglo-American \$1.50. 6 elevators (103,000 bushels), telephone, lumber yard, 1 bank, newspaper, livery stable, customs and immigra-

## DESCRIPTIONS OF TOWNS

tion office, 3 churches (Pres., Luth., R.C.). Alt. 829. Pop. \*510.

¶**HAMIOTA**, on C.P.R. Miniota branch, 50 miles n.w. of Brandon. Dom. Ex. Tel. C.P.R. Hotel. 6 elevators (162,000 bushels), flour mill, 3 churches, 2 banks, large public school, telephone, acetylene gas for domestic light, 2 lumber yards, newspaper, 4 livery stables, 2 large stores, 4 implement warehouses. Alt. 1,696. Pop. \*565.

**SPECIAL OPPORTUNITIES.**—Butcher.

¶**HARTNEY**, on C.N.R. and C.P.R. Estevan branch, 40 miles from Brandon. Dom. Ex., C.N.R. Ex. Tel. C.P.R. and C.N.R. Hotels, Avondale, Imperial \$2. 4 churches, school, 2 banks, opera house, 6 elevators, brick plant, telephone, 2 lumber yards. Seven lakes within 20 miles furnish good goose and duck shooting. Pop. 630.

**SPECIAL OPPORTUNITIES.**—Development of electric power in Souris River, flour mill idle for lack of capital. Write Sec.-Treas. Bd. Trade.

¶**HOLLAND**, on C.P.R., 86 miles w. of Winnipeg. Dom. Ex. Tel. C.P.R. Hotel. 5 elevators (330,000 bushels), flour mill, telephone, lumber yard, livery stable, newspaper, 1 bank. Alt. 1,237. Pop. 500.

**SPECIAL OPPORTUNITIES.**—Creamery, elec. light, brick plant, good clay nearby, butcher. Write Sec.-Treas. of Victoria Municipality, Holland.

¶**KILLARNEY**, on C.P.R. Napinka branch, 164 miles s.w. of Winnipeg. Dom. Ex. Tel. C.P.R. Hotels, Leland, Grand Central, Melville. 4 churches, 2 banks, town hall and opera house, 5 elevators (137,000 bushels), 2 livery stables, newspaper, gymnasium, flour mill, cement block plant, 2 lumber yards, 1 sash and door factory, 1 machine shop, telephone, electric light and power plant, public and high schools, a ladies' brass band. An exhibition held here annually. Fine lake here, makes a good summer resort. Alt. 1,625. Pop. over 1,010.

**SPECIAL OPPORTUNITIES.**—Creamery, laundry, garage. Write Sec. Bd. Trade.

¶**MACGREGOR**, on C.P.R., 78 miles w. of Winnipeg. Dom. Ex. Tel. C.P.R. Deer Station on G.T.P.,  $\frac{3}{4}$  mile distant. Hotels, Stanley \$1.50, Grandview \$1.50. 3 churches, bank, newspaper, 3 elevators, creamery, wheat and grist mills. Pop. 700.

**SPECIAL OPPORTUNITIES.**—Flour mill, brick plant, dentist, good hotel. Write Sec. Development League.

**MANITOU**, on C.P.R., 102 miles s.w. of Winnipeg. Dom. Ex. Hotels, Cassin House, Ellis House \$1.50. 5 churches, public and Normal schools, new \$30,000 consolidated school, county court, opera house, skating and curling rink, acetylene gas for domestic use. Cement sidewalks, good fire protection. Agric. society, newspaper, 2 banks, 5 elevators, flour mill, 2 livery, garage, 2 lumber yards, 5 implement agents, tailor, 2 harness shops, 3 general stores and 15 others. Surrounded by rich mixed farming district. Abundant supply of exceptionally pure water at from 10 to 30 feet. Pop. 630.

**NOTE**.—Nat. gas has been discovered in large quantities 10 miles from Manitou. Boring operations commenced in July, 1913. Land Titles office, new post office, and Customs House expected in 1914.

**SPECIAL OPPORTUNITIES**.—Oatmeal mill, creamery, aerated water plant, brick plant, photographer, pork packing, furniture dealer. See Pembina Municipality under "Rural Municipalities" and Illus. Advt. Write Sec. Bd. Trade.

**MELITA**, on Souris River and C.P.R., 67 miles from Brandon. Dom. Ex. Tel. C.P.R. Hotels, Metropolitan, Commercial \$1.50. 4 churches, collegiate and high school, Land Titles office, 3 parks, one on Souris River used for picnics; 5 elevators (161,000 bushels), flour mill, brick plant, cement block plant, telephone, 2 lumber yards, 2 banks, 2 newspapers, creamery, 3 livery stables. There are strong indications of natural gas. Alt. 1,410. Pop. 750.

**SPECIAL OPPORTUNITIES**.—Electric light plant. Write Sec. Bd. Trade.

**MIAMI**, 80 miles s.w. of Winnipeg, at foot of Pembina Mts., on Miami-Somerset branch of C.N.R. Ex. and Tel. C.N.R. 3 churches, 3 elevators, 1 lumber yard, several stores, 1 bank, 1 school. Good district for mixed farming. Pop. 400.

**MINNEDOSA**, on Little Saskatchewan River, a div and terminal point of C.P.R. Minnedosa branch, 79 miles w. of Portage la Prairie. Dom. Ex. Tel. C.P.R. Hotels, Tremont \$2, Manitoba \$1.50. 5 churches, 2 banks, 5 elevators (126,000 bushels), 3 lumber yards, electric light, telephone, 1 newspaper, 3 livery stables, sash and door factory. Centre of Northern Judicial District. Alt. 1,671. Pop. 2,000.

**SPECIAL OPPORTUNITIES**.—Oat meal mill, brick plant strawboard mill, starch factory. 1,000 b.p. electric power

developed. Town offers free sites, cheap water power and partial tax exemption to new industries. Write Sec. Bd. Trade.

**†MORDEN**, on Cheval Creek, Midland Ry. connecting with G.N.R. to south, on C.P.R., 81 miles s.w. of Winnipeg. Dom. and G.N. Ex. Tel. C.P.R. and G.N.W. Hotels, Arlington \$2, Manitoba. 5 churches and synagogue, large public and high schools, 2 banks, electric light plant owned by town, 3 elevators (90,000 bushels), up-to-date creamery, chop mill, flour mill, cement block plant, telephone, 2 lumber yards, 1 newspaper, 3 livery stables, pump factory, court house and jail, veterinary surgeon, garage, hospital (22 beds), Nurses' Home and isolation hospital. Good farming district. Cement deposits 14 miles distant. Alt. 988. Pop. 1,500.

**NOTE.**—\$20,000 post office and customs house to be completed in 1914.

**SPECIAL OPPORTUNITIES.**—Dairying and mixed farming. Write Sec. Bd. Trade.

**†MORRIS**, on C.P.R., C.N.R., G.N.R. and N.P.R., 40 miles s. of Winnipeg, on Red River. Dom. Ex., C.N.R. Ex. Tel. C.P.R. and C.N.R. Hotels, Commercial, Cecil \$1.50. 7 churches, school, 1 bank, 4 elevators (120,000 bushels), brick plant (daily output 50,000), telephone (largest exchange in Manitoba except Winnipeg), 2 lumber yards, newspaper, 3 livery stables, 2 machine shops, municipal gas plant, 3 general stores. Alt. 773. Pop. 700.

**NOTE.**—In 1914 will be built C.N.R. cut-off from Portage la Prairie to Vita, and bridge crossing Red River at Morris, and div. point ry. shops.

**SPECIAL OPPORTUNITIES.**—Flour mill, creamery, water-works, gents' furnishing, dentist, baker, beet sugar factory, flax mill, wago. maker, foundry, a second brick yard, cheese factory, wholesale distributing warehouse for farm machinery, another bank. Write Sec. of Town of Morris.

**NAPINKA**, on C.P.R. Pembina branch and Estevan and Tilson branch, 160 miles from Brandon. Hotels, Leland, Russell \$1.50. 3 churches (Ang., Pres., Meth.), 1 public school, 4 elevators (122,000 bushels), telephone, newspaper, 1 lumber yard, 2 livery stables, 1 garage, laundry, about 12 stores, 1 bank, machine shop. Pop. 326.

**SPECIAL OPPORTUNITIES.**—Cereal mill, planing mill, flour and feed store, machine shop. Write Sec. Bd. Trade.

†**NEEPAWA**, on White Mud River, on C.N.R. (div. pt.), and C.P.R., 61 miles n.w. of Portage la Prairie, 117 miles n.w. of Winnipeg. Dom. Ex., C.N.R. Ex. Tel. C.P.R. and C.N.R. Hotels, Hamilton, King Edward \$2. 4 churches, 2 public schools and collegiate, 4 banks, 2 elevators, C.N.R. terminals and shops, oatmeal mill (300 bbls. capacity), 1 machine shop, brick plant, sash and door factory, creamery, granite works, Laurentide Milk Co., 2 newspapers, 3 livery stables, 2 garages, match factory. Town owns electric light system and water-works. Big game in Riding Mountains. Centre of a rich agricultural district. Summer fair of the N.W. Agric. and Art Association is held here. Alt. 1,209. Pop. 2,200.

**SPECIAL OPPORTUNITIES.**—Steam laundry, cold storage, mortgage loans  $6\frac{1}{2}$  to 8%. Town gives free sites and special tax rates to industries. See Langford Municipality under "Rural Municipalities," and illus. Advt. Write Sec. Bd. Trade.

**NINGA**, on C.P.R., 175 miles w. of Winnipeg. Dom. Ex. Tel. C.P.R. Hotel, Turtle Mountain \$2. 4 churches, high school, 5 elevators (127,000 bushels), 1 bank, telephone, newspaper, livery stable, C.P.R. Demonstration Farm. Pop. 300.

**SPECIAL OPPORTUNITIES.**—Photographer, lawyer, tailor, dressmaker, dentist, veterinary surgeon. Write Sec. Bd. Trade.

†**OAK LAKE**, on C.P.R. main line, 165 miles w. of Winnipeg, 32 miles w. of Brandon. Dom. Ex. Tel. C.P.R. Hotel, Leland \$2. 4 churches, high school, park and playground, agricultural grounds and buildings, bank, newspaper, skating and curling rink, cement sidewalks, municipal telephone, 4 elevators (129,000 bushels), flour mill (750 bbls. daily), machine shop, 2 lumber yards, 2 livery stables, 2 implement agents, 2 general stores, 2 hardware stores, drug store and several others, restaurant. A rich mixed farming district. Excellent duck and goose shooting. Lawn tennis club (good shale courts), A.F. & A.M., I.O.O.F. and C.O.O.F. lodges. Exceptionally pure water supply at depths of from 2 to 10 feet. Alt. 1,415. Pop. 600.

**SPECIAL OPPORTUNITIES.**—Dentist, lawyer, creamery, horse-dealer, pork packing, photographer, dressmaker. See Sifton and Woodworth Municipalities under "Rural Municipalities" and illus. Advt. Write Sec. Bd. Trade.

†**PILOT MOUND**, on C.P.R., 126 miles w. of Winnipeg. Dom. Ex. Tel. C.P.R. Hotels, Queen's \$1.50, Shore



# NEEPAWA, MAN.

Manufacturers Investigate  
Before Locating



Mountain Avenue, Neepawa. The Industrial Centre of North-Western Manitoba

**Seven Lines of Railways. Free Sites to New Industries**

For further information write

**SECRETARY, BOARD OF TRADE, NEEPAWA, MANITOBA**

House \$1.50. 4 grain elevators (188,000 busbels), 5 churches, school, telephone, 2 lumber yards, Alt. 1,551. Pop. 500.

**SPECIAL OPPORTUNITIES.**—Flour mill, creamery, dress-maker, foundry. Write Sec. Bd. Trade.

**PLUMAS**, on Jordan Creek, on C.N.R. main line, 107 miles w. of Winnipeg. 70 miles from Dauphin. C.N.R. Ex. and Tel. Hotel, Royal \$2. 3 boarding houses, 3 churches, park, bank, 2 elevators, 1 livery stable, 1 lumber yard, cement brick plant, 2 feed mills, 4 implement warehouses, 2 liverys, blacksmith, 10 stores, 1 newspaper. Pop. 400.

**SPECIAL OPPORTUNITIES.**—Lawyer, veterinary surgeon, jeweller, photographer, flour mill, creamery, starch factory, garage. Write Sec. Bd. Trade.

**PLUM COULEE**, on C.P.R. and G.N.R. Midland branch, 66 miles s.w. of Winnipeg. Dom. Ex. Tel. C.P.R. Hotels, Queen's, Commercial. 1 church, 1 school, 7 elevators, bank, telephone, lumber yard, 2 livery stables. Alt. 834. Pop. 460.

**SPECIAL OPPORTUNITIES.**—Creamery, baker, flour mill. Write Sec. Bd. Trade.

**PORTAGE LA PRAIRIE**, 56 miles w. of Winnipeg, 15 miles s. of Lake Manitoba, with its fisheries, and in season, summer resort and bathing beach. On main lines of four transcontinental railway systems—the C.P.R., C.N.R., G.T.P. Ry. and the G.N.R. Dom. Ex., C.N.R. Ex., G.N.R. Ex. Tel. C.P.R., G.N.W. and C.N.R. Hotels, Portage \$2, Merchants \$1.50, Leland \$1.50, Albion \$1.50, Empire \$1.50, Rossin \$1.50. County buildings, court house, General Hospital, Home for Incurables, Provincial Training School, Old Folks' Home, Indian school, armoury, drill hall, two country clubs. Industries: Grain elevators (5), flour mills (3), bricks (3), lumber yards (3), threshing machines and farm implements (2), structural castings, corrugated iron culverts, automobile garages (3), steel grain bins, oatmeal mills, pumps, sashes and doors. The neighborhood supplies sand and clay for brick and cement blocks and rough wood. City owns up-to-date waterworks, sewerage plant and electric plant. Power supplied at prices according to quantity used. A popular summer resort. The city owns extensive, rich-wooded park lands. Island Park is most attractive. Alt. 854. Pop. 6,500.

**NOTE.**—New Masonic Temple to be built in 1914.

**SPECIAL OPPORTUNITIES.**—Manufacture of strawboard and paper boxes, biscuits, starch, pickles, gasoline engines, automobiles, shoes, knitted goods, pianos, overalls, furni-

ture, canneries, wholesale leather goods. City offers free factory sites adjoining 4 great rys., tax exemption or fixed assessment for 20 years when 15 or more bands are employed. Several large firms have already moved from larger cities and put up substantial buildings here. Others propose doing so at an early date. Write Sec. Bd. Trade, Portage la Prairie, for maps, hooklets, etc.

**TRAPID CITY**, on Little Saskatchewan River, on C.P.R. (div. pt.), C.N.R., 36 miles n. of Brandon. Dom. Ex. Tel. C.P.R., C.N.R. Hotel. 5 churches, public school, bank, town owns electric light plant, 4 elevators and 1 warehouse (120,000 bushels), flour mill, 2 lumber yards, newspaper, 2 livery stables, 2 brick yards, creamery. Three water powers, total estimated 40,000 h.p. Alt. 1,580. Pop. 750.

**SPECIAL OPPORTUNITIES.**—Oatmeal mill, sash and door factory, laundry. Write Sec. Bd. Trade.

**RESTON**, on C.P.R., 200 miles from Winnipeg. Dom. Ex. Tel. C.P.R. Boarding house, 1 school, 4 churches, telephone, 4 elevators (112,000 bushels), 2 livery stables, newspaper, laundry, 2 lumber yards, county court office. Pop. 600.

**SPECIAL OPPORTUNITIES.**—Flour mill, creamery. Write Sec. Bd. Trade.

**RIVERS**, on Little Saskatchewan River, on G.T.P. First div pt. w. of Winnipeg (142 miles). C.P.R. station at Wheatland (3 miles), on Brandon-Lenore branch. Can. Ex. Tel. G.T.P. 5 churches (Ang., Meth., Pres., R.C., Greek-Luth.), consolidated school, town and fireball, agric. fair grounds, Govt. local and long dist. telephone, newspaper, moving picture theatre, bank, elevator, lumber yard, 2 auto. liveries, 2 general stores, 2 hardware, 14 others. Important coal supply station for G.T.P. main line. G.T.P. monthly payroll \$20,000. A rich grain-growing and mixed-farming district. Deposits of sand and gravel. Football, baseball, hockey, tennis and gun clubs. Pop. 1,000.

**NOTE.**—By-laws passed for \$20,000 general street improvements and \$8,000 additional fire protection.

**SPECIAL OPPORTUNITIES.**—Cement block plant, flour, oatmeal and grist mills, machine shops and garage, bottling plant. Development of water power on Little Saskatchewan River, 1 mile from town. Dentist, veterinary surgeon. See Daly Rural Municipality under "Rural Municipalities." and illus. Advt. Write Sec. Bd. Trade.

**ROLAND**, on C.N.R. and G.N.R. (Midland), 55 miles s.w. of Winnipeg. C.N.R. Ex. Tel. C.N.R. Hotel, Commercial \$1.50. 4 churches, 2 hanks, 1 lumher yard, 5 grain elevators, 3 farm implement warehouses, restaurant, 18 stores. Alt. 855. Pop. 600.

**ROSENFELD**, on C.P.R., 57 miles from Winnipeg. Dom. Ex. Tel. C.P.R. Hotel, 5 elevators (93,000 hushels), telephone, lumher yard, livery stahle, 1 bank, 1 Pres. church.

**ROSSBURN**, 90 miles from Brandon, on Rosshurn branch of C.N.R. C.N.R. Ex. and Tel. Hotels, Empire \$2, Queen's \$1. 1 school, 3 churches (Ang., Pres., Meth.), 1 elevator, 1 hank. Farm lands from \$10 to \$30. Pop. 400.

**SPECIAL OPPORTUNITIES.**—Flour mill, jeweller, tailor. Write Sec. Bd. Trade.

**RUSSELL**, on C.P.R. and C.N.R. Dom. Ex. and C.N.R. Ex. Tel. C.P.R. and C.N.R. 225 miles n.w. of Winnipeg. Hotels, Queen's, Grand Central. 4 churches, \$37,000 high school, 5 elevators, municipal electric light plant, 2 hanks, 1 pump factory, newspaper, 2 livery stahles, cement hlock plant. Good farming land. Alt. 1,832. Pop. 700.

**SPECIAL OPPORTUNITIES.**—Oatmeal and flour mill, steam laundry, dentist. Write Sec. Bd. Trade.

**ST. BONIFACE**, on Red River opposite Winnlpeg, on C.P.R., G.T.P., G.N.R. and C.N.R. Dom. Ex., C.N.R. Ex., Can. Ex. Tel. C.P.R., G.N.W., G.T. and C.N. Electric Railway to Winnipeg. Hotels, St. George, Stockyards, \$1.50, Norwood, Couture, Quehec, St. Boniface, \$1. 4 churches, Orphanage, Boys' Academy, convent. Seat of R.C. Archhishop of Manitoba. 3 public schools, 1 Normal, 2 collegiates, college, seminary, 2 hospitals, Old Folks' Home, 2 newspapers, 3 hanks, good water system, electric light and cheap power, 5 hrick factories, 5 lumher yards and planing mills, rolling mills, quarry, linseed oil mills, 4 elevators, flour mill, 6 sash and door factories, 2 paint factories, malting, tar paper works, ceiling and roofing plant, marhle and glass works, Artificial Ice Co., Stanley Mineral Springs and Brewing Co. locating here. Union Stock Markets Co. have expended \$1,000,000 on huildings and plant. Alt. 756. Pop. (Assessment Commissioner's return, 1913), 11,405.

**NOTE.**—The new Broadway hridge, costing \$600,000, to connect St. Boniface and Winnipeg, under construction. Electric Ry. extending double-track line to St. Vital,

where Manitoba Govt. are building new agric. college and university.

**SPECIAL OPPORTUNITIES.**—All industries connected with live stock trade. Abattoirs, meat packing, tanneries, etc. Electric power at  $\frac{1}{2}$ c. to 3c. per k.w. hr., with 10% to 40% discount. City is empowered to give fixed assessment on land for 20 years, and exemption from taxes. See illus. Advt. Write Sec. Bd. Trade.

**ST. CLAUDE**, on C.P.R., 62 miles from Winnipeg. Dom. Ex. Tel. C.P.R. Hotel, elevator (30,000 bushels), telephone, lumber yard, livery stable. Pop. 300.

**SPECIAL OPPORTUNITIES.**—Shoemaker, tinsmith, doctor. Write Agent C.P.R.

**†SELKIRK**, on Red River, head Lake Winnipeg navigation and seat of its fishing industry. Summer resort and industrial suburb of Winnipeg. 22 miles n. of Winnipeg, on C.P.R. and Electric Railway. C.N. Railway to East Selkirk. Dom. and C.N.R. Ex. Tel. C.P.R. Hotels, Merchants, Canada Pacific, Llsgr. 7 churches, 3 schools, 2 banks, newspaper, 2 liverys, saw and planing mill, box factory, iron rolling mills and nut and bolt works, 1 wholesale merchandise, navigation companies, 3 cold storage plants, hydro-electric power at very low rate, splendid agricultural, horticultural and dairying district contiguous to city market. Concentrating trans-shipment point for Lake Winnipeg fishing industry, handling 7,000,000 lbs. per annum. Receiving point for ore and raw material from Lake. Point of shipment for Rice Lake Gold Fields on Lake Winnipeg. Pop. 3,200.

**SPECIAL OPPORTUNITIES.**—Brick or pottery factory, iron-working factories, motor boat factory, match factory, flour mill, market gardeners and dairying. Special inducements to manufacturers. See St. Andrew's and St. Clement's Municipalities under "Rural Municipalities" and illus. Advt. Write Bruce Campbell, Publicity Commissioner.

**†SHOAL LAKE**, on C.P.R. Dom. Ex. Tel. C.P.R. 181 miles w. of Winnipeg. Hotels, Lakeview, Albion, Marshall. 4 churches, bank, 5 elevators, 1 block house (250,000 bushels), creamery, cement block plant, machine shop, telephone, lumber yard, newspaper, 3 livery stables, harness maker, 3 implement stores, 4 general stores, 10 others. Boating, fishing and shooting. A summer resort. Alt. 1,793. Pop. \*591.

**SPECIAL OPPORTUNITIES.**—Oatmeal mill, deutlst, wood-worker. Write Sec. Bd. Trade.

**SOMERSET**, on C.N.R., at junction of Carman-Virden and Morris-Somerset branches, 87 miles s.w. of Winnipeg. C.N.R. Ex. Tel. C.N.R. 2 hotels. 4 churches, public and high schools, 2 banks, 3 elevators, 3 general stores, 4 implement agents, 2 blacksmiths, druggist, newspaper. A mixed farming and dairying country. Alt. 1,565. Pop. 450.

**SPECIAL OPPORTUNITIES.**—Flour mill, veterinary surgeon. Write Sec. Bd. Trade.

**SOURIS**, on Souris River and C.P.R., 31 miles s.w. of Brandon, div. pt. Dom. Ex. Tel. C.P.R. Hotels, King Edward, Crescent \$2, Glenwood \$1.25. 4 churches, 3 elevators, telephone, planing mill, public and high schools, flour mill, show case factory, foundry and machine shop, acetylene gas plant, which lights town, waterworks and sewerage system, a fine natural park with good fishing, boating and safe bathing, C.P.R. shops. Alt. 1,400. Pop. 2,000.

**SPECIAL OPPORTUNITIES.**—Electric light, brick plant, laundry, building houses to rent, plumbers and gasfitters, vegetable cannery. 800 h.p. can be developed. Write Sec. Bd. Trade.

**STONEWALL**, on C.P.R. Arborg hr., 21 miles n.w. of Winnipeg. Dom. Ex. Tel. C.P.R. Hotels, Canada Pacific \$2.00, Hudson Bay \$1.25. 4 churches, public school, collegiate institute with agricultural branch, 2 banks, elec. light and power plant, 2 elevators, pickle factory, small packing plant, 2 lumber yards, planing mill, brick yard, 2 stone quarries, 8 lime kilns, 2 newspapers, 3 livery stables. Deposits of building stone, lime, gravel and sand. Alt. 826. Pop. 1,300.

**NOTE.**—Elec. Ry. to Winnipeg will be completed in 1914.

**SPECIAL OPPORTUNITIES.**—Market gardening and milk for Winnipeg market. Mixed farming. Residential suburb for Winnipeg. Write Pres. Bd. Trade.

**SWAN RIVER**, on Swan River, 275 miles n.w. of Winnipeg, div. pt., on C.N.R. Winnipeg-Prince Albert line and terminus of C.N.R. Thunderhill branch. C.N.R. Ex. C.N.R. Tel. Hotel, Commercial \$2. 5 churches, \$25,000 high school, public school, agric. fair grounds, firehall, hospital, theatre. Town owns sewerage system. 2 banks, 2 elevators (40,000 bushels), flour mill, creamery, machine shop, 4 implement agents, 4 liveries, saw mill, stock yards, wholesale oil distributing plant. Newspaper, photographer, 4 general, 2 hardware and several other stores, 3 restaurants. Extensive timber limits in vicinity,

# WINNIPEG AND

The Canadian Prairie Provinces, now attracting hundreds of thousands of settlers annually, offer the **GREATEST GROWING MARKET IN THE WORLD TO-DAY** for manufactured goods of nearly every description. WINNIPEG, railroad and business centre of the whole Canadian West, offers unparalleled **OPPORTUNITIES TO MEN, MONEY AND ENTERPRISE.**



In the Heart of the Business

**Manufacturers, Get Information Now about**

**READ THE WONDERFUL STORY**

Population of Winnipeg	Business Growth Winnipeg Bank Clearings	Building Growth Winnipeg Building Permits
1902..... 48,411	1902.. \$188,370,033	1903-5 \$26,264,500
1904..... 67,262	1904.. 294,601,437	1906-8 24,444,000
1906..... 101,057	1906.. 504,585,914	1909... 9,226,125
1908..... 128,000	1908.. 614,111,801	1910... 15,116,500
1910..... 151,450	1910.. 953,415,281	1911... 17,550,000
1911..... 172,000	1911.1,172,762,142	1912... 20,563,700
1912..... 208,000	1912.1,537,817,524	

**Trade Turnover (annual), \$150,000,000**

Read description of Winnipeg on page 44

Special Reports Furnished

**CHARLES F. ROLAND, WINNIPEG IND**

# ND WESTERN CANADA

Locate your Canadian Factory in the Central City of Canada, where you can get *cheap power*, cheap sites, low taxation, plentiful supply of raw materials, best of labor conditions and unexcelled railway facilities.

Special Reports on Any Line of Industry



the Business Section, Winnipeg

about this Rich and Ever Increasing Market

## STORY OF WINNIPEG IN FIGURES

Growth Building Values	Total Assessment Winnipeg Realty Values	Industrial Growth Increase in Winnipeg Factory Output	Progress in Schools	
			No. of Tchrs.	Attendance
264,500	1900.. \$ 25,077,400	1900... \$ 8,606,248	1871... 1	35
444,000	1902.. 28,615,810	1905... 18,983,248	1886... 49	2,831
226,125	1905.. 62,727,680	1910... 39,400,608	1900... 119	7,500
116,500	1906.. 80,511,727	370 Factories.	1905... 192	11,675
550,000	1909.. 131,402,800	18,000 hands employed.	1910... 340	17,738
583,700	1911.. 172,677,250	\$50,000,000 invested.	1911... 375	21,210
	1912.. 214,360,440		1912... 450	23,000
	1913 Tax Rate—13 mills			

Wheat Inspected, 1911, 104,000,000 bushels

Read description of Winnipeg District on page 79

Furnished Free on Application to

INDUSTRIAL BUREAU, WINNIPEG, CANADA



over 85 million feet-cut in 1912. The distributing centre of rich stock-raising, grain-growing and market-gardening district—fall wheat a feature. Big game shooting and fishing. Tennis, baseball, football, hockey and snowshoe clubs. Pop. 850.

**NOTE.**—Park to be completed in 1914. C.N.R. are planning large extensions to yards, roundhouse, etc.

**SPECIAL OPPORTUNITIES.**—Electric light and power plant, 800 h.p. awaiting development. Pottery plant, brick yard, beet sugar industries, wholesale produce and cold storage warehouse, furniture factory, first-class gents' furnishing store, good confectionery store, good restaurant, blacksmith shop, machine shop, dentist and good business openings in almost any mercantile line. See Swan River Municipality under "Rural Municipalities" and Illus. Advt. Write for free pamphlets to Sec. Bd. Trade.

**THE PAS,** at junction of Saskatchewan and Opasquia rivers, on C.N.R. Steamers to local points. Ex. and Tel. C.N.R. Hotel, Opasquia. 3 churches (Ang., Meth., R.C.), public and R.C. schools, hospital, 2 banks, lumber mill (monthly output 5,000,000 ft.) employing 500 men, has its own electric light plant and waterworks. 7 general stores, 13 others, 6 restaurants, newspaper, Dom. Lands Agency, Customs outpost, Indian agency, Station of R.N.W.M.P., Indian Reserve (7,500 inhabitants). Neighborhood supplies practically unlimited lumber. Beautiful lake and river scenery, fishing, big and small game. Football, baseball and tennis clubs. Pop. 1,509.

**NOTE.**—Court house and gaol, municipal light, water and sewerage systems will be completed in 1914.

**SPECIAL OPPORTUNITIES.**—Boat factory, sash and door factory, brick yard, soft drinks factory, building houses to sell or rent; photographer, market gardening, dairying. Write Sec. Bd. Trade.

**TRANSCONA,** 6 miles e. of Winnipeg, on G.T.P., C.P.R., C.N.R. 150 miles of yard trackage. Can. Ex. Hotels, Transcona, Queen's. 4 churches (Ang., Meth., Pres., R.C.), 3 public schools, municipal buildings, firehall, 3 parks, newspaper, telephone, 2 banks. Town owns water system. Electric light supplied by City of Winnipeg. Electric power, domestic rate 5c. per k.w.h.; industrial, 3c. Tax rate, 10 mills. Industries: Planing mill, tar and chemicals, cartridges, paving blocks, G.T.P. railway shops and roundhouse employ about 1,000 men and will employ 5,000 when completed. Good dairying country.

Football league (6 teams), baseball, hockey and gun clubs.  
Pop. 3,000.

**NOTE.**—New \$130,000 school, and new hotel under construction.

**SPECIAL OPPORTUNITIES.**—Great scarcity of workmen's houses. To manufacturers, cheap sites, good shipping facilities, cheap power. Write Sec. Bd. Trade.

**TREHERNE**, on C.P.R. Souris branch. Dom. Ex. Tel. C.P.R. 77 miles from Winnipeg. Hotels, Ontario, Central. 5 churches (Ang., R.C., Pres., Bap., Meth.), public and high schools, 4 elevators (144,000 bushels), 2 lumber yards, 2 hanks, flour mill, creamery, electric light, newspaper, 1 machine shop, 15 stores. Natural gas in small quantities. Alt. 1,211. Pop. 650.

**SPECIAL OPPORTUNITIES.**—Cement works (marl found in quantities one mile distant). Good fruit-growing soil. Write Sec Bd. Trade.

**VIRDEN**, on Gopher Creek, on C.P.R. main line and Pheasant Hills branch, and C.N.R. terminus branch line, 48 miles w. of Brandon. Dom. Ex., C.N.R. Ex. Tel. C.P.R. and C.N.R. Hotels, Balmoral, Central, Alexander. 4 churches, flour mill, 2 machine shops, 6 elevators (240,000 bushels), 3 hanks, opera house, town acetylene gas works, cement block plant, brick plant, newspaper, 4 livery stables, 1 pump factory, creamery, 1 foundry. Alt. 1,444. Pop. 2,200.

**SPECIAL OPPORTUNITIES.**—Sash and door factory, cement works, waterworks, steam laundry, jeweller. Write Sec. Bd. Trade.

**WASKADA**, on C.P.R., 17 miles from Deloraine. Dom. Ex. Tel. C.P.R. 3 churches, school, firehall, hank, 4 elevators (110,000 bushels), telephone, cement block plant, newspaper, livery stable, garage, 2 lumber yards, skating and curling rink, 2 pool rooms. Pop. 400.

**SPECIAL OPPORTUNITIES.**—Grist mill, hotel, development of natural gas. Write Pres. Bd. Trade.

**WAWANESA**, on Souris River and C.N.R., 25 miles s.e. of Brandon. C.N.R. Ex. Tel. C.N.R. and C.P.R. 3 churches, school, opera house, 1 flour mill, 1 machine shop, 1 hank, intermediate and high schools, H.O. of Occidental Ins. Co., Wawanesa Mutual Ins. Co. and Occidental Trust Co. Alt. 1,198. Pop. \*350. Write Sec. Bd. Trade.

**WINKLER**, on C.P.R. branch line, 74 miles s.w. of Winnipeg. Dom. Ex. Tel. C.P.R. Hotel, Stanley. 2 churches

## DESCRIPTIONS OF TOWNS

(Men. and Bergtbaler), \$12,000 school, 4 elevators, flour mill, telephone, livery stable, bank, 2 lumber cos., billiard ball, 2 drug stores, hardware, 2 general stores. Alt. 888. Pop. \*458.

**SPECIAL OPPORTUNITIES.**—Barber, laundry.

†**WINNIPEG**, at confluence of Red River and Assiniboine River. Capital of Manitoba, 60 miles n. of U.S. boundary. Incorporated as a city 1874. Hotels, Royal Alexandra \$3 up, Queen's \$2.50 up, Empire \$3 up, Mariaggi, Winnipeg, Leland House \$2, St. Regis \$1.50 up, Seymour \$1.50, Clarendon \$2 up, Stratbcona \$1.50 up, and many others. On C.P.R., C.N.R., G.T.P., G.N.R. and N.P. Tel. C.P.R., G.N.W. and C.N.R. Dom. Ex., Can. Ex., C.N.R. Ex. Western headquarters of C.P.R. Water transportation on Lake Winnipeg and Red River. The largest grain market in the world. The neighborhood supplies wheat and coarse grains, wool, flax, hides, brick clays, glass sands, spruce timber, gypsum, peat, salt, manganese. Civic power, electric, 60,000 h.p. developed, from  $\frac{1}{2}$ ¢ per kilowatt. Winnipeg's wholesale turnover exceeds \$150,000,000 annually, and has an enormous mercantile territory under development. Clearing house returns, \$106,956,720 in 1901; \$1,537,817,524 in 1912. The C.P.R., C.N.R. and G.T.P. shops are located here. Winnipeg has 370 factories, employing over 18,000 hands, including tents, boxes, cement, hutter, carriages, cigars, confectionery, wire, flour mills, harness, iron works, jewellery, packing houses, soaps, clothing, wood fixtures, farm traction engines, steam hoilers, structural steel works, planing mills, breakfast foods, rolling mills, cabinets, caskets. Value of annual output of manufactured products \$43,000,000. Pop. 42,340 in 1901; 1912 civic census (approx.) 203,000.

**SPECIAL OPPORTUNITIES.**—Factories, clothing, food-stuffs, footwear, metal goods, hardware, woodenware, flax and jute goods, linen mills, agricultural implements and machinery, beet sugar works, chemical works, and all lines of industries; banking, loan companies, real estate. See Winnipeg District under "Announcements" on p. 79, and illus. Advt. Write for free information to Chas. F. Roland, Commissioner, Permanent Exposition of Industries, Winnipeg, as to manufacturing possibilities in any line of industry.

## Rural Municipalities

The statistics and particulars in these descriptions have been supplied by the officials of the rural municipality in each case. The descriptions of a few municipalities have not been included where no returns have been received by the Editors. For statistical purposes the province is divided by the Government into crop districts known as the Eastern, North Central, South Central, North Western, and South Western. This division has been followed here.

### Eastern District

*Area 108 miles e. and w. by 180 miles n. and s. approx. Comprises municipalities of Assiniboia, Bifrost, Brokenhead, Charleswood, De Salaberry, Fort Garry, Franklin, Gimli, Hanover, Kildonan, La Broquerie, Macdonald (east half), Ritchot, Rockwood, Rosser, St. Andrew's, St. Anne, St. Clement's, St. Paul's, St. Vital, Sprague, Springfield, Stuartburn, Tache, Whitemouth. Average crops per acre in 1912: Wheat, 25 bush.; oats, 48; barley, 38; flax, 13; roots, 225. Homestead lands available. Average price per acre of raw lands, \$4 to \$20; improved farms, \$15 to \$50.*

**ASSINIBOIA.** Area 27,600 acres, 2,000 acres cultivated. Extends 12 miles westerly from Winnipeg city limits and 4 miles north. Land is rolling; soil black loam, 8 in., with clay subsoil. Watered by Assiniboia River, at southern extremity. Served by Man. S.W. Ry., C.N.R. and G.T.P. Wells from 30 to 130 feet. Mixed farming. A large portion has been subdivided into building lots. Average price (not based on productive value) of improved farms \$200. Electric cars to Headingly village. Pop. about 9,000, including English, Canadians (English and French). Write Clerk of Municipality, Kirkfield Park P.O.

**BIFROST.** Area 571,775 acres, 7,542 acres cultivated. Situate on west side of Lake Winnipeg. Land is flat and marshy, about three-fifths covered with spruce, tamarack, hirsch and poplar. Stony ridges running northwest and southeast. Soil, black loam 3 to 12 inches on hard, greyish subsoil, stony in parts. Watered by Icelandic River and Lake Winnipeg in east. Served by C.P.R. Teulon branch, C.P.R. Gimli branch, and C.N.R. Rose Isle branch under construction. Govt. 'phone to Winnipeg. Local markets at Arborg and Icelandic River.

## EASTERN DISTRICT

Mixed farming. Wheat averages 20 bush.; oats, 45; barley, 40; flax, 15. Pop. 3,500, including Icelanders, Ruthenians, Hungarians, and Canadians. About 1,000 homesteads available. Price of raw lands per acre, \$7 to \$20; improved, \$10 to \$30. Write Sec.-Treas. of Municipality, Hnausa P.O.

**BROKENHEAD.** Area 180,480 acres, 30,000 acres cultivated. Land is rolling and good along rivers and near Beausejour, elsewhere sandy or blue clay. Watered by Brokenhead River. Wells 20 to 75 ft. Markets at Winnipeg and Kenora, Ont. Served by C.P.R. main line. Mixed farming and grain. Wheat crops of 35 bushels; oats, 80; barley, 45; flax, 18, are common. Pop. 5,000, including Poles and Germans. No homesteads available. Price per acre of raw lands, \$15 to \$20; improved, \$35 to \$60. Write Sec. Treas. of Municipality, Beausejour.

**DE SALABERRY.** Area comprises 158,444 acres, 43,374 acres cultivated. Land is flat and dry. Soil black loam, 2 feet deep, especially good land west of C.P.R. Watered by rivers. Wells 50 to 350 ft.; good water east of C.P.R., scarce westwards. Markets at Dufrost, Carey, Otterburna, St. Pierre and Winnipeg. Served by C.P.R. Mixed farming. Wheat averages 22 bushels; oats, 60; barley, 35; flax, 18. Pop. 1,770, including French Canadians, Americans and English. Price per acre of raw lands, \$20; improved, \$35 to \$40. Write Sec.-Treas. of Municipality, St. Pierre P.O.

**FRANKLIN.** Area, about 225,000 acres. Land is mostly rolling, with some scrub and poplar. Soil, black loam, 8 to 12 in. deep, on clay subsoil. Watered by rivers and creeks. Wells 12 to 24 ft. A grain-growing district, well suited to mixed farming. Considerable amount of corn grown for fodder. Market at Winnipeg. Served by C.P.R. and C.N.R. Average crops per acre: Wheat, 12 to 20 bush.; oats, 30 to 60; barley, 20 to 40; flax, 10 to 15. Pop. about 3,000, including Canadians, Americans and Germans. No homesteads available. Average price per acre of raw lands, \$12 to \$20; improved farms, \$25 to \$45. Write Sec.-Treas. of Municipality, Franklin.

**GIMLI.** Land is rolling. Soil black loam, 6 to 10 in. deep, on white clay subsoil. Wells, 20 to 100 ft. A mixed farming district. Cattle raising and dairying predominate. Grains and vegetables do well. Local market at Gimli. Winnipeg 50 miles distant. Served throughout by 2 lines of C.P.R. and steamers on Lake Winnipeg. Country is well wooded. Good scenery. Average crops

per acre: Wheat, 25 hush.; oats, 65; barley, 30. Pop. 2,377, including Icelanders, Germans, Poles and Ruthenians. A few homesteads available. Average price per acre of raw lands, \$6 to \$10; improved farms, \$10 to \$40. Write Sec.-Treas. of Municipality, Gimli.

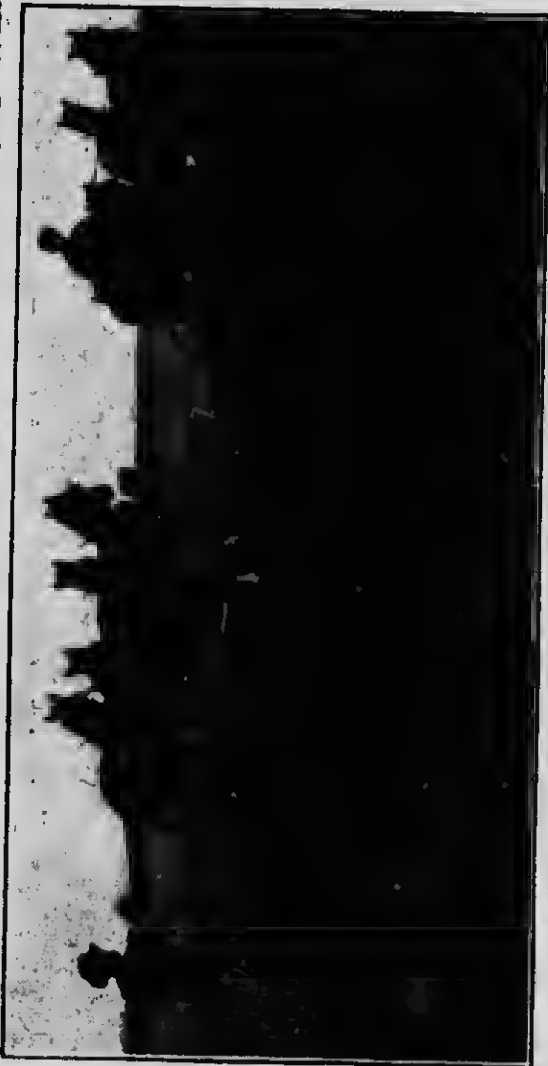
**HANOVER.** Area 183,316 acres, 32,041 acres cultivated. Land is flat; marshy at e. corner; elsewhere dry. Soil in s.e. of 3 tps. is sandy; of 2 tps. sandy loam; Tp. 7, R. 42, is good land. Wells from 10 to 150 ft. Served by C.P.R. Soo Line and C.N.R. Farming mixed, grain and dairying. Markets at Otterburne, Niverville and Giroux. Crops average: Wheat, 15 hush.; oats, 40; barley, 30; average price per acre, \$4 to \$15; improved farms, \$8 to \$50. Pop. 3,580. Write Sec. of Municipality, Chorlitz P.O.

**LA BROQUERIE.** Area 132,577 acres, 6,558 acres cultivated. Land is rolling and marshy between the hills. Soil sandy loam, about 12 in. subsoil, clay to the north, gravelly to south. Watered by wells 15 to 150 ft. Markets, Winnipeg in summer, lumber camps in winter. Served by C.N.R. Mixed farming. Wheat averages 15 hush.; oats, 45; barley, 40; flax, 8; roots, 150. Pop. 1,500, French and Germans. Hudson's Bay Co. and Western Trust Co. have lands for sale. Two townships available for homesteads. Price per acre of raw lands, \$5; improved, \$20. Write to Sec.-Treas. of Municipality, La Broquerie P.O.

**RITCHOT.** Land is flat. Soil, black loam, 2 to 3 ft. deep. Watered by Red River and numerous coulees. Wells average 60 ft. A mixed farming district. Within a few miles of the Winnipeg market. Served by C.P.R. and C.N.R. Pop. about 2,000, chiefly French Canadians. No homesteads available. Average price per acre of land in southern part, \$50; nearer the city, about \$100. Write Sec.-Treas. of Municipality, Ritchot.

**ROCKWOOD.** Area 344,940 acres, 43,272 acres cultivated. Land is slightly rolling and dry. Soil generally black and clay loam, 1 to 5 ft.; clay subsoil, but varies greatly. Wells 20 to 60 ft. Winnipeg, and local markets at Stonewall, Balmoral, Gunton, Teulon, Stony Mountain. Served by C.P.R. and C.N.R. Grain growing and dairying. Wheat averages 22 bush.; oats, 50; barley, 70; flax, 15; potatoes, 250. Pop. 4,610. Price per acre of raw lands, \$10 to \$40; improved, \$20 to \$100. Some homesteads available. Write Sec.-Treas. of Municipality, Stonewall P.O.

**OAK LAKE** Where Others **PROSPER** You Will



*Oak Lake is surrounded by a rich, mixed farming country*

**A Prosperous Town Surrounded by Prosperous Farmers**

Read the description of Oak Lake on page 33, and of Sifton and Wallace Rural Municipalities on pages 73 and 75.

*Further information will be gladly given by the*

**SECRETARY, BOARD OF TRADE - OAK LAKE, MANITOBA**

**ROSSER.** Area 107,380 acres, 36,490 acres cultivated. Land is rolling. Soil black loam; clay subsoil. Watered by wells 45 to 90 ft. Market at Winnipeg. Served by C.P.R. and C.N.R. Mixed farming. Wheat averages 20 bush.; oats, 40; barley, 35; flax, 18; roots, 250. Pop. 3,500, of various nationalities. Price per acre of raw lands, \$25; improved, from \$50 up. No homesteads available. Write Sec.-Treas. of Municipality, Rosser P.O.

**ST. ANDREW'S.** Area, 171,062 acres; 12,319 acres cultivated. Land is rolling, with scrub. Soil, black loam, 10 to 48 in.; clay subsoil. Watered by creeks and wells, 16 to 36 ft., and Red River and Lake Winnipeg on eastern boundary. Served by C.P.R. Markets, Winnipeg and local. Grain and mixed farming. Wheat averages 31 bush.; oats, 90; barley, 56; flax, 18. Pop. 2,077, including Canadians, Icelanders, English and Americans. No homesteads available. Average price per acre of raw lands, \$20; improved, \$35. Write Bruce Campbell, Publicity Commissioner, Selkirk.

**ST. ANNE.** Area, 96,259 acres. Land is rolling. Soil, sandy loam and dark black loam. Watered by River Seine. Wells, 30 to 200 ft. A mixed farming district. Oats average 60 bush. per acre; barley, 25; flax, 10; roots, 200. Pop. 1,200, including French, English and Germans. About 200 homesteads available. Average price per acre of raw lands, \$8 to \$25; improved farms, \$30 to \$40. Write the Reeve, St. Anne.

**ST. CLEMENT'S.** Area, 300,000 acres, of which 10,198 are cultivated. Land is rolling, with thickets of small timber. Some low lands in northern part near mouth of Red River, of which about 10,000 acres are cut annually for hay. Soil, deep black loam, 12 to 28 in. deep, on clay subsoil. Served by C.N.R. and C.P.R. Markets, Winnipeg, Selkirk and local. A mixed farming district. Wheat yields 30 to 40 bush.; oats, 75 to 100; barley, 50 to 70; flax, 15 to 20. Pop. 3,970. Mostly English speaking. Some Galicians. No homesteads available. Average price per acre of raw lands, \$15 to \$20; improved farms, \$30 to \$60. Write Bruce Campbell, Publicity Commissioner, Selkirk.

**ST. PAUL'S.** Land is sloping and in some parts hilly. Well drained. Soil, black loam, 15 in. deep, on clay subsoil. Watered by Red River, flowing through centre of municipality. Good water at 40 to 100 ft. A mixed farming and market gardening district, producing oats, barley, vegetables and hay. Closely adjoining City of



## EASTERN DISTRICT

Winnipeg. Served by C.P.R., C.N.R. and Electric Ry. Markets at Winnipeg and Transcona. Average crops per acre: Wheat, 25 hush.; oats, 60; barley, 40; roots, 200. Pop. about 800, English speaking. No homesteads available. Average price per acre of raw lands, \$100; improved farms, according to location, \$200 to \$400. Write The Reeve, St. Paul's.

**SPRAGUE.** Area 552,960 acres, 1,712 acres cultivated in s.e. corner of province. Land about half dry and rolling; balance marshy, with fall for drainage. Soil, part sandy loam; part clay loam, 12 to 18 in., with clay subsoil. Flowing wells from 65 to 100 ft. Served by C.N.R. Mixed farming. Crops average: Wheat, 30 bush.; oats, 50; barley, 35; flax, 18; roots, 400. Pop. about 1,200, including English, Americans, French, Scandinavians and Austrians. Homestead land available. C.N.R. Land Co. and Hudson's Bay Co. have lands for sale. Local markets at Piney, Sprague, Vassar. Write Sec. of Municipality, Pine Valley P.O.

**STUARTBURN.** Land is flat or slightly rolling, and generally well drained. A few marshy places. Fertile dark sandy soil. Good water at 10 to 20 ft. A mixed farming and dairying district. Grains and vegetables thrive. Good local markets. Served by G.N.R. through centre of municipality. Average crops per acre: Wheat, 18 hush.; oats, 35; barley, 29; potatoes, 400. Pop. 4,558, chiefly Ruthenians. Some homesteads available. Average price per acre of raw lands, \$10 to \$16; improved farms, \$12 to \$20. Write Sec.-Treas. of Municipality, Stuartburn.

**WHITEMOUTH.** Area 166,331 acres, 8,323 acres cultivated. Land is generally rolling, with some hills at the north. Soil, loamy clay 2 to 4 ft. deep. more suitable for grasses and hay; watered by Whitemouth and Winnipeg Rivers and several creeks. The former rising in Whitemouth Lake, twists for 80 miles through the district and abounds with fish. Good wells 20 to 60 ft. Served by C.P.R. and G.T.P., running parallel 6 miles apart. Mixed farming is general. Leading crops: Wheat and hay. Oats, barley, peas, timothy and clover do well. Markets at Winnipeg, Kenora and Port Arthur. District is admirably adapted for dairying. Pea vine and red top timothy is the natural growth of the meadow lands. The Government takes samples of timothy, hay and clover from this district for exhibitions. Spruce timber can be bought at saw mills near the Winnipeg River at from \$13 to \$14

per M ft. Settlers can take out cordwood in the winter and get \$3.00 to \$3.25 for spruce and \$3.75 for tamarack at railway stations. If four miles of drain were put in between Winnipeg River and the C.P.R. a very fine tract of land would be opened up close to developed water powers, supplying abundant electricity. Of homesteads 100,000 acres are available. Price of improved farms from \$20 to \$30. Pop. about 2,000, including British, Germans, Swedes, many of whom came poor and are now well off. Write M. N. Tobin, Reeve, Whitemouth P.O.

### North Central District

*Area 96 miles n. and s. by 48 miles e. and w. Comprises municipalities of Langford, Lansdowne, McCreary, North Cypress, North Norfolk, Ochre River, Portage la Prairie, Rosedale, St. Francois Xavier, St. Laurent, Ste. Rose, Westbourne, Woodlands. Average crops in 1912: Wheat, 28 bush.; oats, 53; barley, 41; flax, 11; roots, \$75. Pop. mixed in north, with Ontario farmers in the south. Average price of raw lands per acre, \$10 to \$25; improved farms, \$25 to \$60. Some homesteads available.*

**LANGFORD.** Area 114,690 acres, 73,435 acres cultivated. Land is rolling prairie, situate on slopes approaching Riding Mts. Soil is black loam 16 to 30 in. deep. Exempt from frost. Wells 12 to 30 ft. Served by 7 lines of railway. Chiefly wheat growing. Dairying is being developed. Average crop 1912: Wheat, 22 bushels; oats, 40; barley, 35; flax, 18. Wood can be obtained from adjacent Mts. Pop. 1,250, practically all Anglo-Saxons. Few homesteads left. Average price per acre: Raw lands, \$18 to \$25; improved farms, \$25 to \$50. Write Sec. Board of Trade, Neepawa.

**LANSDOWNE.** Area, 253,440 acres, 60,000 acres cultivated, comprising 11 townships. Land is rolling with lower lands well drained. Soil varies from heavy clay to sandy loam. Watered by White Mud and Grassy Rivers and smaller streams. Wells 10 to 100 ft. Served by C.P.R. and C.N.R. Local markets at Arden, Keyes, Plumas, Glenella, Neepawa. Mixed farming, grain and dairying. Wheat averages 20 bushels; oats, 40; barley, 25; flax, 13. Pop. 2,800, including Canadians and British. Very few homesteads available. Price per acre of raw lands, \$5 to \$40; improved, about \$40. Write Sec.-Treas. of Municipality, Arden P.O.

**McCREARY.** Area 230,400 acres, 57,600 acres cultivated. Land is level and well drained. Ranges 13 and 14 have

## NORTH CENTRAL DISTRICT

shallow soil with stony ridges. Ranges 15 and 16 heavy black loam, 12 to 18 in. Clay subsoil, with much brush. Good water obtained at 12 to 18 ft. Markets at Winnipeg, Brandon, Neepawa, Dauphin and local markets. McCreary is a div. point on C.N.R. Abundant growth of feed makes mixed farming good. Wheat averages 22 bushels; oats, 55; barley, 43; flax, 18. Pop. 2,200, including English, Canadians, Americans and French Canadians. First prize for wheat (junior class) and gold medal at Brandon, 1911, won by McCreary district, and third for wheat (senior class). Timber plentiful in Riding Mts. Good scenery and sport. No homesteads available. Hudson's Bay Co. and C.N.R. have lands for sale. Price per acre of raw lands, \$18; improved, \$30 to \$60. Write Sec.-Treas. of Municipality, McCreary P.O.

**NORFOLK, NORTH.** Area 257,946 acres, 102,462 acres cultivated. Land varies from hilly to flat. Soil, sandy loam and clay loam. Watered by wells 10 to 70 ft. Winnipeg and local markets at Macgregor, Austin and Sidney. Served by C.P.R., C.N.R. and G.T.P., main and branch lines. Mixed farming, grain, dairying and stock. Wheat averages 18 bush.; oats, 40; barley, 30; flax, 15. Pop. 5,000, including English, Scotch, Irish and Canadians. Price per acre of raw lands, \$10 to \$15; improved, \$30 and up. No homesteads available. Write Sec.-Treas. of Municipality, Macgregor P.O.

**OCHRE RIVER.** Area 201,571 acres, 14,571 acres cultivated. Land is rolling or flat. Soil: S. of Lake Dauphin, black loam, 12 in.; clay subsoil. N. of Lake Dauphin soil is shallow and stony in places. Watered by Ochre and Turtle Rivers and streams fed by springs in Riding Mts. Wells, 20 ft. Markets at Winnipeg, Portage la Prairie, Dauphin and local points. Served by C.N.R. main line and Ste. Rose branch. Mixed farming and grain growing. Wheat averages 18 bush.; oats, 55; barley, 35; flax, 12. Pop. 1,500, including Canadians and English, some French and Galicians. Hudson's Bay Co. and C.N.R. have lands for sale. Homesteads available in 8 townships. Price per acre of raw lands, \$10 to \$20; improved, \$12 to \$40. Write Sec.-Treas. of Municipality.

**PORTAGE LA PRAIRIE.** Area 432,497 acres, 190,742 acres cultivated. Land is level prairie. Soil, black loam on clay subsoil. Watered by wells 16 to 135 ft. Served by main lines and branches C.P.R., C.N.R., G.T.P., G.N.R., giving easy access to markets at Winnipeg

and Fort William. Grain-growing district. Wheat averages 20 bush.; oats, 50; barley, 40; flax, 15; roots, 300. Pop. 3,665, including Canadians, Americans, English, Scotch, Irish. No homesteads available. Average price per acre of raw lands, \$10 to \$25; improved, \$45. Write Sec. Bd. of Trade, Portage la Prairie.

**ROSEDALE.** Area 207,360 acres, 60,991 acres cultivated. Land is rolling, traversed by Riding Mts. Soil, except s.e. corner, black loam, 12 in. or more; clay subsoil. Watered by streams. Wells, 10 to 50 ft. Neepawa and other local markets. Served by 50 miles of railway in the municipality. Farming, all kinds, chiefly grain. Wheat averages 20 bushels; oats, 45. Abundant fuel and timber in neighborhood. Pop. 3,000. English speaking, and Slavs in n.w. Price per acre of raw lands, \$15; improved, \$30 to \$40. Few homesteads available. C.N.R. and Hudson's Bay Co. have lands for sale. Write Sec. Bd. of Trade, Neepawa.

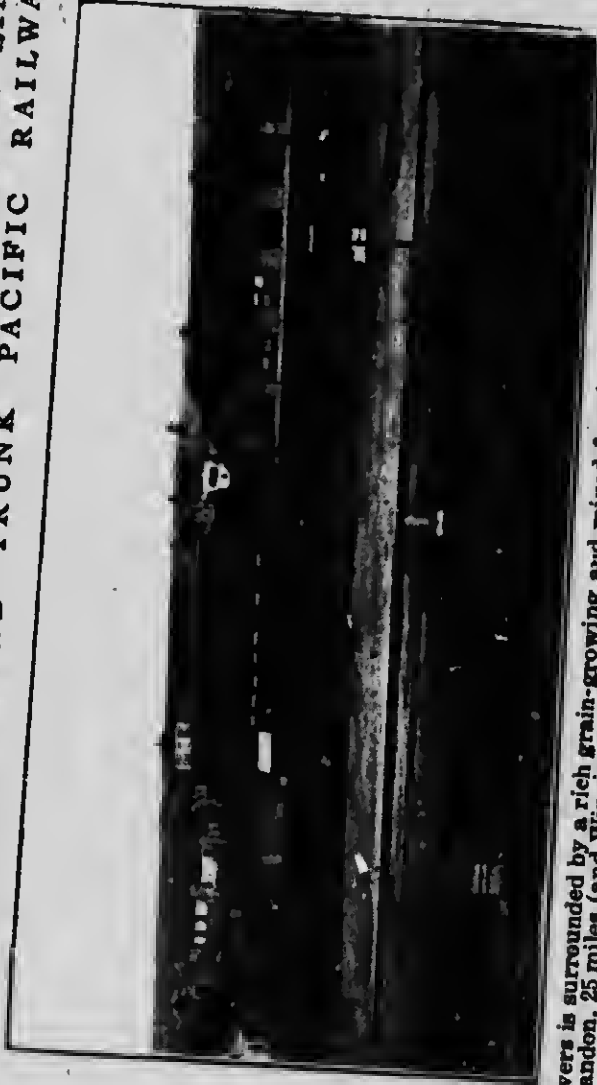
**ST. LAURENT.** Area, 78,000 acres. Soil varies. Watered by Lake Manitoba, Shoal Lake and several small lakes. Wells from 8 to 60 ft. A mixed farming and dairying district. Served by C.N.R. Markets at local points and Winnipeg. Pop. includes Canadians, Irish, English and French. No homesteads available. Average price per acre of raw lands, \$14; improved farms, up to \$24. Write The Reeve, St. Laurent.

**WESTBOURNE.** Area 737,000 acres, 43,980 acres cultivated. Land is level, sloping gently, and well drained. Soil varies from sandy loam to heavy clay. Watered by Lake Winnipeg and several rivers. Wells from 20 to 120 ft. deep. Markets well served by C.N.R. main line and two branches and C.P.R. 18 stations in municipality. Mixed farming and stock raising. Wheat averages 20 bushels; oats, 60; barley, 30; flax, 16; roots yield heavily. Pop. 7,500 (increasing rapidly), including Canadians, British, Americans, Icelanders, Russians, Germans and Galicians. Big Point, on Lake Manitoba, is a summer resort. C.N.R., C.P.R., Hudson's Bay Co. and Canada N.W. Land Co. have lands for sale. A few homesteads available and more will be opened shortly. Price per acre: Raw lands, \$8 to \$16; improved, \$30. Write Sec.-Treas. of Municipality, Gladstone P.O.

**WOODLANDS.** Area 330,472 acres, 21,984 acres cultivated. Land is flat and dry. Soil varies; in parts it is shallow and stony. Watered by wells 15 to 100 ft. Markets at Winnipeg. Served by C.P.R. main line and

# RIVERS

A DIVISIONAL POINT ON MAIN LINE  
GRAND TRUNK PACIFIC RAILWAY



Rivers is surrounded by a rich grain-growing and mixed-farming District, with good market at Brandon, 25 miles (and Winnipeg, 142 miles). Land is rapidly increasing in value. Prices range from \$20 per acre for virgin prairie to \$30 per acre for improved farms.

*Read Description of town on page 36 and of Daly Rural Municipality on page 69*  
Write for further information to Secretary, Board of Trade, Rivers, Manitoba

C.N.R., 2 branches. All kinds of farming. Wheat averages 23 bush.; oats, 36; barley, 38; flax, 12. Pop. 1,850. No homesteads available. Price per acre of raw lands, \$15 to \$20; improved, \$30 to \$50. Write Sec.-Treas. of Municipality, Woodlands P.O.

### South Central District

Area 96 miles e. and w. by 54 miles n. and s. Comprises municipalities of Argyle, Dufferin, Grey, Lorne, Louise, Macdonald (west half), Montcalm, Morris, Pembina, Rhineland, Roblin, Roland, South Cypress, South Norfolk, Stanley, Strathcona, Thompson, Victoria. Settlement is fairly thick. Average crops in 1912: Wheat, 23 bushels; oats, 53; barley, 40; flax, 15; roots, 250. Practically no homesteads available. Average price per acre of raw lands, \$15 to \$40; improved farms, \$25 to \$50.

**ARGYLE.** Area 186,058 acres, 85,485 acres cultivated. Land is rolling. Soil, 13 ins. of black loam with clay subsoil. Wells average 25 ft. Good railway transportation. Average crops per acre: Wheat, 20 bush.; oats, 60; barley, 35; flax, 12. Local markets at Baldur, Greenway, Glenora and Neelin. Pop. 3,300, including Canadians, English and Icelanders. Land mostly taken up. Very few homesteads available. Price of raw lands, \$20; improved farms, \$25 to \$30. Write Sec.-Treas. of Municipality, Baldur P.O.

**DUFFERIN.** Area 218,880 acres, 116,150 acres cultivated. Land is flat. Soil: Township 7 is sandy, elsewhere is black and clay loam, averaging 2 ft. with clay subsoil. Watered by Boyne River and Tobacco Creek. Wells 14 to 125 ft. Served by C.P.R., C.N.R. and G.N.R.; 3 trains to Winnipeg daily. Leading crops: Wheat, oats, barley, flax. Pop. about 7,000, including Canadians, Scotch and Americans. District won first prize for wheat in competition with the province in 1910. Write Sec. Bd. of Trade, Carman.

**LORNE.** Area 206,640 acres, 73,035 acres cultivated. Land is mostly rolling. Soil, black and clay loam, 18 ins. Watered by wells, 20 ft. Well wooded and picturesque, with several lakes. Markets at Winnipeg, 84 miles, Brandon, 87 miles, via C.N.R., and Somerset, Cardinal, Altamont and Swan Lake. Served by C.N.R. Farming—grain, cattle, hogs, dairying. Wheat averages 22 bush.; oats, 50; barley, 30. Pop. 6,000, including Canadians (English and French), British and Belgians. Price per acre: Raw lands, \$20; improved, \$30. No home-

## SOUTH CENTRAL DISTRICT

steads available. Provincial Govt. has lands for sale, also Hudson's Bay Co. and Canada N.W. Land Co., Winnipeg. Write Sec. Bd. Trade, Somerset.

**LOUISE.** Area 229,908 acres, 152,124 acres cultivated. Land is rolling. Soil, mostly black loam,  $1\frac{1}{2}$  to 2 ft. deep; clay subsoil; some light soil. Townships 1 and 2 have especially fine land and buildings. Watered by Pembina River and creeks. Wells 15 to 100 ft. Local markets at Pilot Mound, Crystal City and Clearwater. Mixed farming and grain; some stock raising. Wheat averages 20 bush.; oats, 45; barley, 35. Pop. 2,200, all British. Price per acre: Raw lands, \$23; improved, \$32. No homesteads available. Write Clerk of Municipality, Clearwater P.O.

**MACDONALD.** Area 273,853 acres, 135,718 acres cultivated. Land is level, or slightly rolling. Watered by La Salle and Scratching Rivers. Wells 20 to 30 ft. Soil is good black loam. Local markets at Sanford, Winnipeg, La Salle and Starbuck. Served by C.N.R. and C.P.R. Farming—grain, cattle and dairying. Wheat averages 22 bush.; oats, 27; barley, 31; flax, 15. Pop. 3,000, including English, French, Germans, and a few Scandinavians. Price per acre of raw lands, \$25; improved, \$50. No homesteads available. Write Municipal Treasurer, Sanford P.O.

**MORRIS.** Area 246,049 acres, 103,525 acres cultivated. Land flat; soil, 18 inches of black loam on clay subsoil; very rich, but requires the right weather; no stone, rock or scrub. Watered by Morris and Red Rivers. Wells average 70 ft. Average crops: Wheat, 25 bush.; oats, 70; barley, 40; flax, 12; roots, 400. Stock raising and dairying. Served by C.P.R., G.N.R., C.N.R., N.P.R. Markets, local and at Winnipeg, 40 miles. Less than half of the district is under cultivation, one-third of the land being held by non-residents. Pop. about 4,000, including English, Germans and French. Av. price per acre: Raw lands, \$20 to \$25; improved farms, \$25 to \$40. Write the Secretary-Treasurer, Town of Morris.

**NORFOLK, SOUTH.** Area 177,280 acres, 74,811 acres cultivated. Land is undulating. Soil varies, comprising sandy, black and clay loam. Excellent land near Treherne, well timbered, with good water. Watered by Assiniboine River and creeks. Wells about 14 ft. Served by C.P.R. and C.N.R. Local markets at Treherne, Rathwell, Notre Dame. Grain and mixed farming. Wheat averages 17 bush.; oats, 45; barley, 80; flax, 18; pota-

toes, 300. Pop. about 3,000, including English, Scotch, Irish, Canadians and a few French. Price per acre of raw lands (poor quality), \$5 to \$20; improved, \$20 to \$50. No homesteads available. C.P.R. Co., Hudson's Bay Co. and Canada N.W. Land Co., Winnipeg, have lands for sale. Write Sec.-Treas. of Municipality, Treherne P.O.

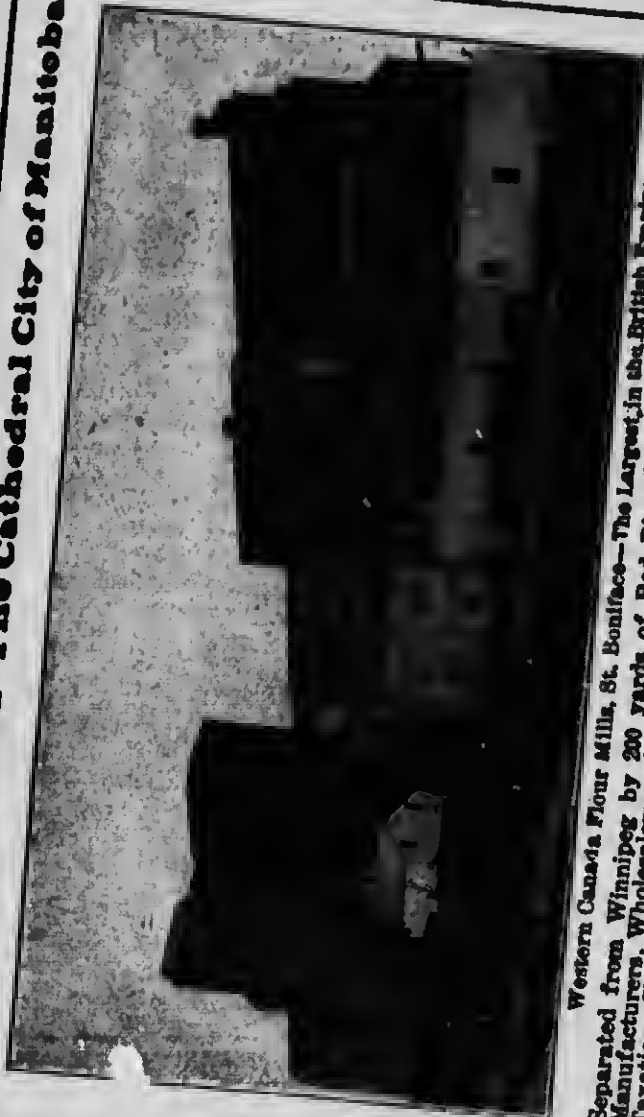
**PEMBINA.** Area 100,000 acres. Land is gently rolling. Soil, black loam, 16 in., on clay subsoil. Watered by Pembina River. Good water obtainable in shale rock at 22 ft. A very rich mixed farming, dairying and grain-growing district. Served by C.P.R. Deloraine branch. Five elevators (200,000 hush. capacity) at Manitou. Average crops per acre: Wheat, 25 bush.; oats, 50; barley, 35. Oil and natural gas have been struck in large quantities and are being developed by an English syndicate. Pop. 2,000, including English, Irish, Scotch and French. No homesteads available. Price of improved farms, \$30 to \$45 per acre. Write Sec. Bd. Trade, Manitou.

**RHINELAND.** Area 276,480 acres, 177,657 acres cultivated. Land flat and well drained. Soil, western part sandy black loam; eastern, black loam with clay subsoil. Watered by wells (average depth 16 ft.) and ponds. Served by C.P.R. and Midland R.R. Farming mostly grain. Wheat, in 1911 (a dry season), averaged 20 bush.; oats, 40; barley, 30; flax, 15. No dairy cattle. An excellent climate. Musk and water melons grow freely and are fed to pigs. Pop. about 8,000, including many Germans, Mennonites. Local markets at Gretna, Altona, Plum Coulee, Rosenfeld, Hasket, Winkler. Price per acre of raw lands, \$20; improved farms, \$30 to \$50. No homesteads available. Write Sec.-Treas. of Municipality, Altona P.O.

**STANLEY.** Area 160,000 acres, 73,627 acres cultivated. Land partly wooded; about 10,000 acres prairie; some hilly, including Pembina Mts., which are interspersed with well-wooded valleys. Soil partly clay loam, partly sandy loam, mostly with clay subsoil. Watered by several creeks lined with trees. Served by C.P.R. and G.N.R., with C.N.R. 1 mile from north boundary. Excellent roads, good markets. Wells average 18 ft. Mixed farming. Cattle and hogs are purchased by buyers on the farms; cream, etc., by creamery at Morden. Average crops in 1913: Wheat, 20 bush.; oats, 50; barley, 35; flax, 14; roots, 200. Corn for feeding does well. No summer frosts. Pop. 7,000, including Canadians, Scotch,



## ST. BONIFACE The Cathedral City of Manitoba



Western Canada Flour Mills, St. Boniface—The Largest in the British Empire  
 Separated from Winnipeg by 200 yards of Red River, which is spanned by six bridges.  
 Manufacturers, Wholesalers and Capitalists will find here Exceptional Opportunities.  
 Taxation, Cheap Water, Very Cheap Electric Power, Excellent Factory Sites available on  
 Three Railways. Council offers inducements to Manufacturers and others locating here.  
 Read description of St. Boniface on page 37. Write for further information to

**SECRETARY, BOARD OF TRADE, ST. BONIFACE, MANITOBA**

## RURAL MUNICIPALITIES

59

Irish, English, Germans, Mennonites, Scandinavians, Icelanders. Most farms are protected by a bluff. Lands have been held by speculators and tenants. No raw lands available. Improved farms average \$30 per acre. Write Pres. Bd. Trade, Morden.

**STRATHCONA.** Area 111,068 acres, 45,816 acres cultivated. Land is rolling and dry. Soil black loam, 8 ins.; clay subsoil. Watered by small sloughs. Wells 10 to 30 ft. Local markets at Belmont, Hilton and Ninette. Served by C.N.R. Mixed farming. Wheat averages 18 bush.; oats, 24; barley, 28; flax, 10. Pop. 1,263, including Canadians, English and Scotch. Price per acre: Raw lands, \$10 to \$20; improved, \$25 to \$40. No homesteads available. Write Sec.-Treas. of Municipality, Belmont P.O.

**THOMPSON.** Area 126,720 acres, 7,200 acres cultivated. Land is rolling. Soil is vegetable mould washed down in past ages from the Pembina Mts., 2 miles from Miami. Watered by creeks. Wells 18 to 30 ft. Farming, mixed. Served by C.N.R. Crops average 20 bush.; oats, 40; barley, 35; flax, 18. Local markets at Miami and Rosebank. Pop. 3,230, chiefly Canadians. Average price of raw lands, \$25; improved farms, \$40. Write Sec. of Municipality, Miami P.O.

**VICTORIA.** Area 116,480 acres, 60,000 acres cultivated. Land is rolling. Soil, black loam, 12 ins. deep. Tps. 8 and 9, Rgs. 11 and 12, and most of Tp. 7, R. 12, are very sandy. The rest is very good land. Clay subsoil. Watered by Assiniboine River, small streams and lakes. Wells average 18 ft. Served by C.P.R. Grain and mixed farming. Wheat averages 18 bush.; oats, 50; barley, 45; flax, 15. Markets at Winnipeg, Holland and Cypress River. Pop. about 5,000, including English, French and Belgians. Price per acre: Raw lands, \$20; improved farms, \$30 to \$35. No homesteads available. Provincial Govt. has cheap lands for sale. Write Mgr. Union Bank, Holland P.O.

### North Western District

Area 78 miles e. and w. by 144 miles n. and s. Comprises municipalities of Archie, Birle, Blanchard, Boulton, Clavilliam, Dauphin, Ellice, Gilbert Plains, Grandview, Hamiota, Harrison, Minniota, Minitonas, Minto, Mossey River, Odonah, Rossburn, Russell, Saskatchewan, Shell River, Shellmouth, Shoal Lake, Silver Creek Strathclair, Swan River.

## NORTH WESTERN DISTRICT

*Average crops in 1919: Wheat, 80 bush.; oats, 55; barley, 43; flax, 14; roots, 175. Well settled at south with Ontario farmers; in northern part chiefly English. Some homesteads available. Average price per acre of raw lands, \$8 to \$16; improved farms, \$16 to \$45.*

**ARCHIE.** Area 138,240 acres, 44,502 acres cultivated. Land is slightly rolling, with some hay sloughs. Soil in part of n.e. portion is sandy loam. All the remainder black loam 1 to 2½ ft. deep on clay subsoil, drained by coulees running into Assiniboine River. Wells 12 to 60 ft. deep. Served by Kirkella branch C.P.R., main line C.P.R., Virden-McAuley branch C.P.R. and G.T.P. Leading crops: Wheat averages 20 to 38 bush.; oats, 40 to 80; barley, 25 to 40; flax, 12 to 18. Stockraising and dairying on the increase. Pop. 878, including Canadians. Scotch, English, Irish and Swedes. Damage by frost, hail and drought is almost unknown. Water power obtainable from Assiniboine River, Birdtail Creek, Beaver Creek, Sisson's Creek. Price per acre: Raw lands, \$15; improved farms, \$25 to \$35. No homesteads available. Write Sec.-Treas. of Municipality, McAuley P.O.

**BLANCHARD.** Area 138,240 acres, 53,924 acres cultivated. Land is rolling. Soil, black loam on clay subsoil. Watered by Oak River and wells 12 to 40 ft. Served by G.T.P., C.P.R. and C.N.R. Good local markets. Mixed farming and grain. Wheat averages 25 bush; oats, 60; barley, 50; flax, 25. Pop. 1,200, chiefly British; an old and prosperous settlement. No homesteads available. Price of raw lands per acre, \$15 to \$20; improved, \$30 to \$40. Write the Reeve of Municipality, Bank of B.N.A., Oak River.

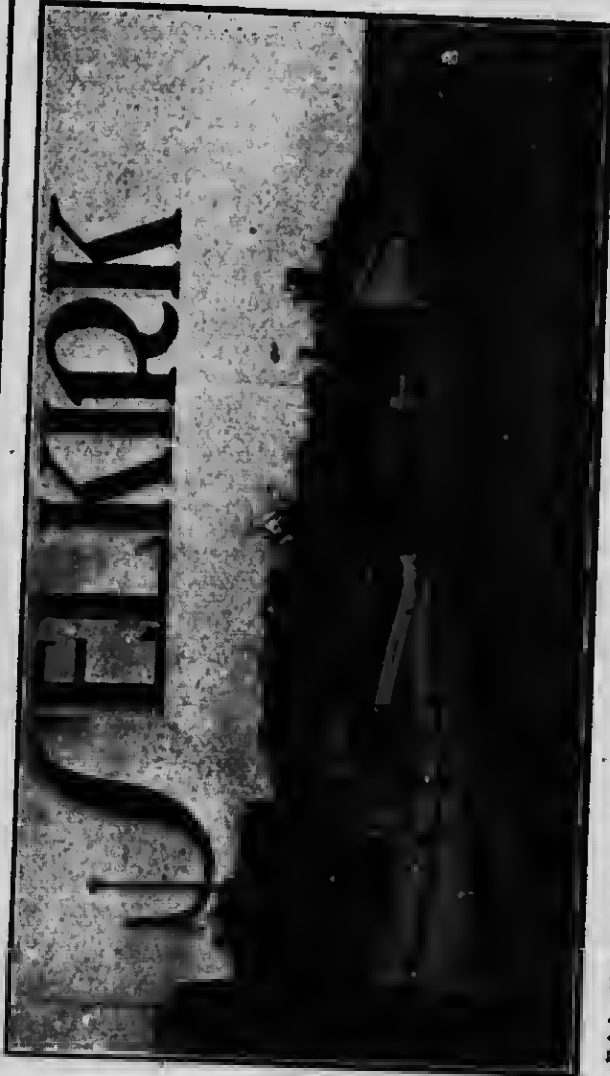
**BIRTLE.** Area, 203,920 acres; 54,575 acres cultivated. Soil, black loam; clay subsoil. Abundant wood and water. Good natural pasture. Watered by Bird Tail Creek flowing from Riding Mts. into Assiniboine River. Served by C.P.R., G.T.R., C.N.R. Average crops per acre: Wheat, 20 bush.; oats, 50; barley, 40. An ideal district for mixed farming, grain, dairying and stock raising. Pop. about 2,500, mostly Canadians and British. No homesteads available. Average price per acre of raw lands, \$15 up; improved farms, \$20 up. Write Sec. Birtle District Bd. Trade, Birtle.

**CLANWILLIAM.** Area 70,761 acres, 5,604 acres cultivated, comprising 4 townships. Land is rolling. Soil, sandy loam and clay loam 9 to 18 in. Clay subsoil.

Watered by streams and lakes. Wells 12 to 25 ft. Served by C.P.R. and C.N.R. Local markets at Erikson, Claawilliam and Minnedosa. Mixed farming, subject to frosts, mostly oats grown. Wheat averages 20 bush.; oats, 40 to 80; barley, 30. Pop. about 1,000, chiefly Scandinavians. Average price per acre: Raw lands, \$12; improved, \$15 to \$20. Several homesteads available. Write Sec. Treas. of Municipality, Minnedosa P.O.

**DAUPHIN.** Area 260,445 acres, 67,309 acres cultivated, in the northwest section between and round the Riding and Duck Mountains, skirting Lakes Winnipeg and Winnipegosis, and including Lake Dauphin. The whole district is more or less thickly timbered, varying from scattered clumps of willows bordering the Assiniboine in the s.w. to groves of poplar and coniferous forests on the mountains. The country is well drained by the Vermillion, the Ochre, the Turtle, the Valley and Wilson Rivers. Soil is rich alluvial loam. North of the Valley River and east of the C.N.R. it is apt to be shallow: along the rivers it is the very best. A fine and sure mixed farming district. Crops of wheat, barley, oats, maize, alfalfa and ordinary farm produce are abundant. Settlers having no timber on their lands may obtain permits to cut dry timber for fuel to the extent of 25 cords for 25c. in the forest reserves on Riding Mountains (1,535 sq. miles), and on Duck Mountains (1,450 sq. miles). In 1912 this district had over three million acres not under cultivation. Pop. about 36,000, over 6,000 homesteads open for entry, and average grain per acre: Wheat, 20.1 bush.; oats, 43.4 hush.; roots, 245 bush.;  $3\frac{1}{4}$  million pounds of fish were shipped to market. Write Geo. King, Sec. Board of Trade, Dauphin.

**ELLICE.** Area 137,520 acres, 46,525 acres cultivated. Land is fiat, partly rolling and dry. Soil n. of Beaver Creek and w. of Assiniboine is sandy, all e. of Assiniboine is good wheat land, especially free from summer frosts; on e. bank sandy loam and clay loam, 2 to 3 ft., on clay subsoil. Watered by Assiniboine and Qu'Appelle Rivers and small creeks. Wells average 12 ft. Local markets at St. Lazare, Foxwarren, Binscarth, Birtle, Welwyn. Served by G.T.P., C.P.R. and C.N.R. Mixed farming. Wheat averages 25 hush.; oats, 65; barley, 45; flax, 20. Pop. about 1,000, including English and French Canadians. Few homesteads available. Hudson's Bay Co., C.P.R. Co. and Canada N.W. Land Co. have lands for sale. Price per acre of raw lands, \$10; improved, \$25 to \$40. Write Sec. Bd. of Trade, Birtle.



Selkirk, the largest incorporated town in Manitoba, 20 miles north of Winnipeg, is the head of Lake Winnipeg Navigation, and affords many opportunities in the shipping trade, and development of up-lake resources. Besides, as Principal Professor W. J. Black of the Manitoba Agricultural College has said: "There is more dollars' worth of soil fertility to the square inch, in the Selkirk District, than in any other available part of the whole world." See description Selkirk, St. Andrew's and St. Clement's municipalities, pages 38 and 49.

Write **BRUCE CAMPBELL, Commissioner** . . . **SELKIRK, MAN.**

**GILBERT PLAINS.** Area 215,040 acres, 64,873 acres cultivated. Land is rolling. 90% good agricultural land. Soil varies. Sandy, black and clay loam; mostly clay subsoil. Watered by rivers and numerous creeks. Wells at 10 to 50 ft. Served by C.N. Ry. Mixed farming and dairying, subject to frost. An oat country. Wheat averages 22 bush.; oats, 45; barley, 35; flax, 15. Firewood obtainable at Riding Mts. to the south and Duck Mts. to the north. Water power on Valley River. Pop. about 4,000, including Canadians, English, Scotch, Irish, Americans and Galicians. Price per acre of raw lands, \$10 to \$20; improved farms, \$20 to \$50. Few homesteads available. Write Sec.-Treas. of Municipality, Gilbert Plains P.O.

**GRANDVIEW.** Area 276,480 acres, 54,000 acres cultivated. Land slightly rolling, and well drained. Soil black loam, 12 in.; clay subsoil. Watered by Valley River, Silver Creek, Wilson Creek. Wells 20 ft. Served by C.N.R. main line. Local market at Grandview. Mixed farming, grain predominating. Wheat averages 22 bushels; oats, 60; barley, 40; flax, 15. Pop. 1,370. Canadians. Water power on Valley River. Few homesteads available. Price per acre of raw lands, \$15; improved, \$25. Write Sec. of Board of Trade, Grandview.

**HAMIOTA.** Area 137,600 acres, 92,515 acres cultivated. The soil is black loam, with heavy clay subsoil. All the land is taken up. There are no homesteads. Wheat averages 20 to 25 bush.; oats, 50 to 60 bush.; barley 35 to 45 bush. per acre. Served by C.P.R., G.T.P. and C.N.R. Pop. 1,253. Price of unimproved land, \$20; improved land, \$25 to \$35 per acre. Write Mayor, Hamiota, Man.

**MINIOTA.** Area 199,680 acres, 72,790 acres cultivated. Land, rolling prairie. Soil, black loam and yellow clay subsoil. Watered by Assiniboine River and tributaries. Wells 20 to 50 ft. Stock farming and grain growing. Served by 4 railways. Average crops: Wheat, 25 bush.; oats, 50; barley, 40; flax, 20. Markets at Miniota, Crandell, Isabella, Beuiab, and Arrow River. Few homesteads available. Price per acre: Improved farms, \$30 to \$40. Pop. 2,000, including English, Canadians, Scotch and Irish. Write Sec.-Treas. of Municipality, Miniota P.O.

**MINITONAS.** Area 291,840 acres, 17,412 acres cultivated. Land is rolling, with some patches of marsh. Soil chiefly deep black loam, with clay and gravelly subsoil. Some

gravelly ridges. Plenty of good water at 8 to 12 ft. Served by C.N.R. Local markets. Crops chiefly grain, but district is better suited for mixed farming. Spring wheat averages 20 bush.; fall wheat, up to 40; oats, 60; barley, 40; roots and hay do well. Fuel is plentiful. Wild fruits abound. Pop. about 1,200, including Canadians, English and Scotch. Many good homesteads available. Price per acre of raw lands, \$9 to \$20; improved, \$12 to \$30. Write Sec.-Treas. of Municipality, Minnetonka P.O.

**MINTO.** Area 92,160 acres, 16,985 acres cultivated. Land is rolling. Soil, black loam, 18 in. deep; clay subsoil. Wood plentiful. Watered by river, streams and small sloughs. Wells from 15 to 100 ft. Mixed farming. Wheat averages 23 bush.; oats, 60; barley, 28. Price per acre of raw lands, \$18; improved, \$25. Pop. 825. No homesteads available. Write Sec.-Treas. of Municipality, Minnedosa P.O.

**MOSSEY RIVER.** Area 276,480 acres, 11,345 acres cultivated. Land is flat; in parts marshy. Soil, black loam, 6 to 8 in., on clay subsoil. Some gravelly spots. Watered by Fishing, Fork and Mossey Rivers. Wells about 20 ft. Markets at Winnipeg and villages of Fork River and Winnipegosis. Served by C.N.R. Mixed farming and grain growing. Pop. about 2,000, English and Galicians. Few homesteads available; some may be opened later. Hudson's Bay Co. and C.N.R. have lands for sale. Average price per acre: Raw lands, \$12; improved farms cheap. Write Sec.-Treas. of Municipality, or F. B. Lacey, Fork River.

**ODANAH.** Area 92,160 acres, 31,611 acres cultivated. Land is rolling, broken in places by small lakes. Soil, black loam. Watered by streams. Wells 20 to 150 ft. Local markets at Minnedosa, Franklin, Moore Park, Cordova and Rapid City. Served by C.N.R. and C.P.R. Mixed farming. Wheat averages 25 bush.; oats, 55; barley, 40; flax, 18; potatoes, 400. Pop. 1,300; including English, Scotch, Americans and Swedes. No homesteads available. Price per acre of raw lands, \$15 to \$20; improved, \$25 to \$50. Write Sec.-Treas. of Municipality, Minnedosa P.O.

**ROSSBURN.** Area 121,740 acres, 19,278 acres cultivated. Land is rolling. Soil, sandy loam, 10 in., on clay subsoil, in east, and black loam, heavy soil in west. Watered by small lakes and streams. Wells 10 to 100 ft. Local markets at Rosburn, Roach and Vista. Served by C.N.R. Grain growing and stock raising. Wheat averages 25

bush.; barley, 45; oats, 60; potatoes thrive; mostly oats grown. Pop. 2,500, including English, Irish, Scotch, Austrians and Galicians. C.N.R. and Hudson's Bay Co. have lands for sale. Very few homesteads available. Price per acre of raw lands, \$8 to \$25; improved, \$25 to \$40. Write Sec.-Treas. of Municipality, Rossburn P.O.

**RUSSELL.** Land is rolling prairie, with oak bluffs and park lands. Soil, black loam, 2 ft. deep. Wells 10 to 20 ft. A grain-growing and mixed farming district. Served by C.P.R. Yorkton branch and C.N.R. Rossburn branch. Market at Winnipeg. Average crops per acre. Wheat, 23 bush.; oats, 50; barley, 38; flax, 18. No homesteads available. Average price per acre of raw lands, \$20; improved farms, \$30. Write The Reeve, Russell.

**SASKATCHEWAN.** Area 132,480 acres, 57,589 acres cultivated. Land is rolling. Soil, black loam, 1 to 2 ft.; clay subsoil. Watered by Little Saskatchewan River and ponds. Wells 20 to 100 ft. Local markets at Newdale, Basswood and Pettapiece, Rapid City and Minnedosa. Served by C.P.R. and C.N.R. Mixed farming. Specially good district for oats. Wheat averages 25 bush.; oats, 75. Pop. 1,350. Price per acre of raw lands, \$15 to \$20; improved, \$20 to \$30. No homesteads available. Write Sec.-Treas. of Municipality, Rapid City.

**SHELLMOUTH.** Area 138,240 acres, 22,696 acres cultivated. Land is rolling. Soil, principally clay, with a little gravel. Watered by Assiniboine and Shell Rivers. Wells 18 to 30 ft. Mixed farming. Crops average: Wheat, 30 bush.; oats, 65; barley, 40; flax, 24; roots, 300. Pop. 350, includes Canadians, with some Galicians. Few homesteads available. Water power at Shell River. Fine scenery on river banks. Write the Reeve of Municipality, Assinippi P.O.

**SHELL RIVER.** Area 190,720 acres. Land is flat or slightly rolling, lying in valley between Assiniboine and Shell Rivers. Watered by creeks, and wells 15 to 30 ft. Soil, black loam, 2 to 3 ft.; clay subsoil. Market at Winnipeg. Served by C.N.R. main line. Farming—grain, mixed, and dairying. Wheat averages 20 bush.; oats, 45; barley, 20; flax, 10. Pop. 4,000, including Canadians and Americans. About 300 quarter sections available for homesteads. Average price per acre of raw lands, \$10 to \$15; improved, \$15 to \$20. Write F. J. Newton, or Sec.-Treas. of Municipality, Roblin P.O.

**SHOAL LAKE.** Area 147,746 acres, 49,125 acres cultivated. Land is rolling. Soil, sandy loam, 12 in.; clay



# SWAN RIVER

The Best Fall Wheat  
District in Manitoba



## Vegetables Grown at Swan River

This is not a prize collection. Every farmer in this District has as good. Some better. For opportunities offering at Swan River read description on page 39, and description of Swan River District on page 67.

Write for further information and free literature to

**FRANK SCRASE, Secretary, Board of Trade - SWAN RIVER, MAN.**

subsoil; very good oat land. Watered by lakes and creeks. Wells 30 to 100 ft. Local markets at Shoal Lake, Oakburn and Kelloe. 5 grain elevators at Shoal Lake. Served by C.P.R. and C.N.R. Mixed farming. Wheat averages 28 bush.; oats, 65; barley, 50; roots, 200. Price per acre of raw lands, \$15; improved, \$30. Pop. 1,500. No homesteads available. Write Sec.-Treas. of Municipality, Shoal Lake P.O.

**SILVER CREEK.** Area 120,229 acres, 31,766 acres cultivated. Land is rolling, with bluffs and sloughs. Soil, black loam 8 to 24 in. deep; clay subsoil. Watered by small streams and lakes. Wells 15 to 40 ft. Mixed farming and grain. Wheat averages 25 bush.; oats, 60; barley, 35. Subject to occasional frosts. Oats and early varieties of wheat thrive best. Good cattle country. Served by C.N.R. and C.P.R. Local markets at Angusville and Silverton. Pop. about 1,000, including Canadians, British and Galicians. Price per acre of raw lands, \$12 to \$20; improved, up to \$30. Hudson's Bay Co., Winnipeg, has lands for sale. No homesteads available. Write Sec.-Treas. of Municipality, Russell P.O.

**STRATHCLAIR.** Area 124,082 acres, 45,905 acres cultivated. Land is rolling. Townships 17 to 21 may be termed sandy; balance is black loam mixed with clay, 6 in. deep. Served by C.P.R. and C.N.R. Good wells at from 15 to 20 ft. Some small lakes. Mixed farming is general. Leading crops: Oats, barley and potatoes. Markets at Strathclair, Shoal Lake, Newdale and Winnipeg. No homesteads available. Price of raw lands, \$15 to \$20; improved farms, \$25 to \$40. Pop. about 1,200, including Scotch, English, Irish, Galicians and Canadians. Write Jno. Underhill, Reeve, Strathclair P.O.

**SWAN RIVER.** Area of district, 2,027,520 acres. Land is generally rolling and fairly dry. Soil, black loam, 2 ft. deep, with clay subsoil. Well watered by rivers and streams. Wells average 20 ft., unlimited pure water, absolutely free from alkali. A mixed farming district, chiefly grain growing with considerable market gardening and dairying. Fall wheat a feature, yields from 25 to 45 bush. per acre. Strawberries, raspberries and all small fruits, tomatoes, cucumbers, celery, marrows, corn and practically every kind of vegetable mature perfectly all through the valley. Strawberries yield from 60 to 75 crates per acre, average price \$4 per crate. Excellent openings for market gardening and fruit growing. In 1912 1,680,000 bushels of grain, 78 cars of bogs, 93 cars

of cattle, value \$156,000; 243 cars of hay, value \$30,000; and 60 million ft. of lumber were shipped from the valley. There were in the valley in 1912, 18,124 horses, 38,610 cattle, 12,044 hogs, and 1,290 sheep. Leading crops: Wheat, oats, barley, timothy, potatoes and small fruits and vegetables. Markets at Swan River, Minitonas, Benito, Kenville, Durhan and Bowsman. 2,643 homesteads available. Average price per acre of raw lands, \$10 to \$20; improved farms, \$20 to \$35. Served by C.N.R. main line and Thunderhill branch. Average crops per acre: Wheat, 23 bush.; oats, 50; barley, 45; roots, 300. Pop. 15,000, chiefly Canadians, English, Americans and Scandinavians. Assessed value of valley in 1912, \$2,300,000. An excellent water power site at Swan River, 1,000 h.p. available, on which Provincial Govt. has made extended tests. Write Sec. Bd. Trade, Swan River.

### South Western District

*Area 84 miles e. and w. by 79 miles n. and s. Comprises municipalities of Albert, Arthur, Brenda, Cameron, Cornwallis, Daly, Edward, Elton, Glenwood, Morton, Oakland, Pipestone, Riverside, Sifton, Turtle Mountain, Wallace, Whitehead, Whitewater, Winchester, Woodworth. Average crops in 1912: Wheat, 23 bush.; oats, 52; barley, 40; flax, 14; roots, 300. Settled fairly thickly, chiefly by good class of settlers from Ontario. Practically no homesteads available. Average price per acre of raw lands, \$12 to \$25; improved farms, \$20 to \$50.*

**ALBERT.** Area 184,320 acres, 78,408 acres cultivated. Situated in the southwest corner of province. Land dark loam; clay subsoil; especially adapted for wheat, averaging 20 bushels per acre. Abundant growth of grass. Good water plentiful. Pop. 850. Cultivated land from \$18 to \$25 per acre; uncultivated land from \$12 to \$18 per acre. Write Jas. McLaren, Reeve, Albert Crescent, Man.

**ARTHUR.** Area 184,320 acres, 117,502 acres cultivated. Land is flat, traversed by creeks, with steep banks. Soil varies from sandy loam to clay loam, 6 to 24 ins. Watered by Souris River, creeks and wells (average 25 ft.). Markets at Brandon and Winnipeg. Served by C.P.R., 2 branches. Mixed farming and grain growing. In 1911 (a poor season), wheat averaged 18 bush., oats, 30; barley, 20. Pop. about 1,200, Canadians. No homesteads available. Price per acre: Raw lands, \$12 to \$20; im-

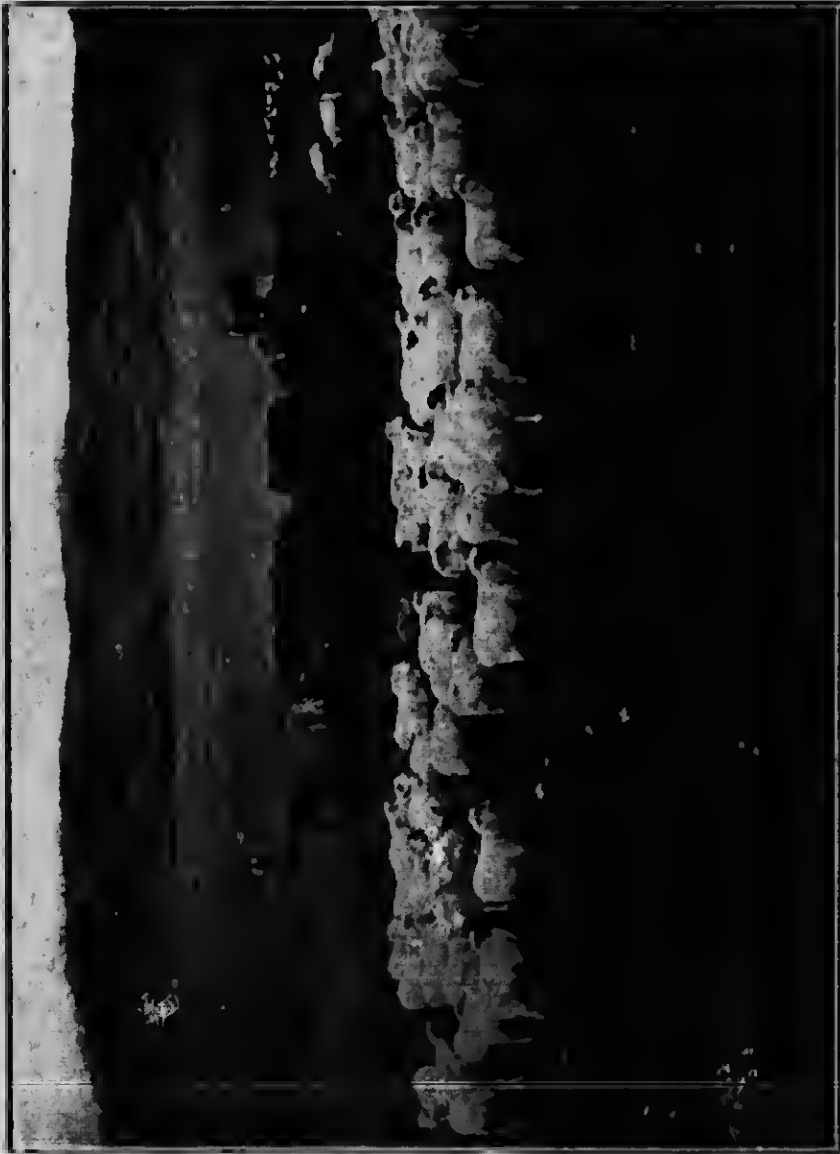
proved, \$40. Write Sec.-Treas. of Municipality, Melita P.O.

**BRENDA.** Area 184,320 acres, 138,240 acres cultivated. Land is rolling and nearly all dry. Soil, black loam, 12 in.; clay subsoil. Tp. 4, R. 25, is sandy. Watered by wells 25 to 40 ft. Natural gas has been struck in Waskada and is used for lighting, etc. Local markets at Napinka, Medora, Deloraine, Goodlands and Waskada. Served by C.P.R., 2 branches. Farming, chiefly grain, some mixed; dairying and cattle. Wheat averaged 18 bush.; oats, 40; barley, 35 in 1911 (a poor season). Pop. 2,700, including Anglo-Saxons and Danes. No homesteads available. Price per acre of raw lands, \$28 to \$30; improved, \$32 to \$40. Write the Reeve, or Sec.-Treas. of the Municipality, Waskada.

**CAMERON.** Area 184,320 acres, 110,664 acres cultivated. Land chiefly rolling; in parts hilly; occasional marshes. Soil, sandy north of Souris River; black loam at south. Wells 10 to 180 ft. Farming, chiefly grain, some dairying. Served by C.P.R. and C.N.R., which meet at Hartney. Local markets at Winnipeg, 160 miles; Brudoo, 40 miles, and local stations. Average crops: Wheat, 20 bush.; oats, 35; barley, 30; flax, 15; roots, 200. Few homesteads available. Pop. 1,300. Average price per acre: Raw lands, \$30; improved farms, \$45. Write Sec.-Treas. of Municipality, Hartney P.O.

**CORNWALLIS.** Area 118,970 acres, 62,716 acres cultivated. Six townships. Land is rolling. Soil, mostly black loam on clay subsoil. Townships 9 and 10, R. 17, are gravelly. Watered by Assiniboine and Little Souris Rivers and Willow Creek. Wells 18 to 40 ft. The municipality includes the city of Brandon (pop. 15,000), and 346 passenger and 478 freight trains weekly on C.P.R., C.N.R., G.N.R., and G.T.P., reach other markets. Mixed farming and grain. Wheat averages 20 bush.; oats, 60; barley, 40; flax, 15; potatoes, 300. Some of the best cattle and horses in the West are bred here. The champion steer of the 1912 International Live Stock Exposition at Chicago was reared in this district; see under "Agriculture." Pop. of district, 1,000 outside Brandon. No homesteads or raw lands available. Pop. 700. Price per acre of improved farms, \$30 to \$60. Write Sec.-Treas. of Municipality, Brandon P.O.

**DALY.** Area 137,193 acres, 80,000 acres cultivated; an old settlement. Land is rolling. Soil varies from light sandy loam to heaviest clay, depth 2 ft. Subsoil chiefly



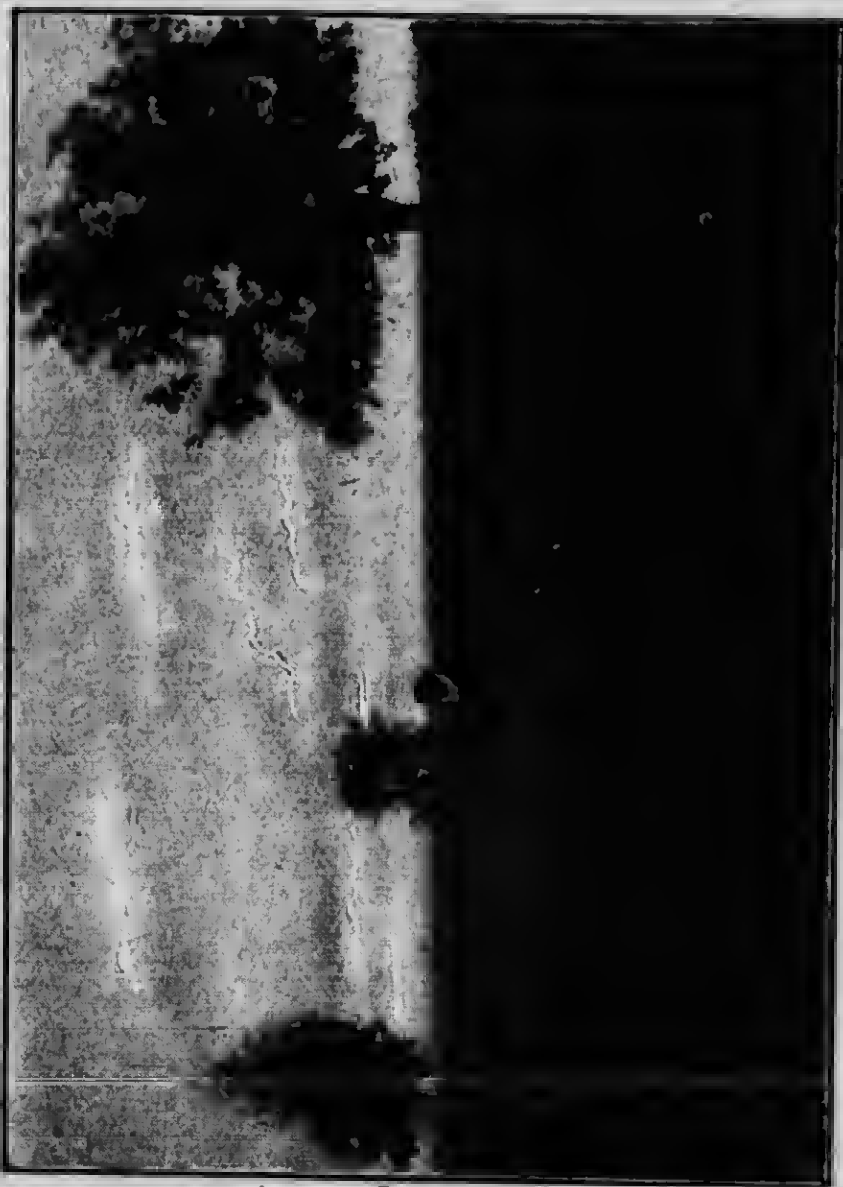
Live Stock on a Farm in the Assiniboine Valley near Birtle.  
See pages 20, 24, 60 and 61.

clay. Watered by Assiniboine, Oak and Little Saskatchewan Rivers, and numerous creeks and springs. Wells from 20 to 50 ft. Grain growing and mixed farming. Average crops: Wheat, 25 bush.; oats, 50; barley, 60. Very heavy root crops. The municipality is spending \$10,000 a year on roads. Local markets at Carnegie, Pendenis, Rivers, Wheatland and Bradwardine. Numerous prizes have been won at exhibitions. No homesteads available. Price per acre of raw lands, \$25; improved, \$30. Pop. 1,010, including Canadians, Scotch, English, Irish and a few Galicians. Write Sec. Bd. Trade, Rivers.

**EDWARD.** Area 184,320 acres, 85,886 acres cultivated. Land is rolling, with level stretches. Soil varies; sandy loam, black loam and clay loam is found, with clay subsoil; a few gravel streaks. Watered by creeks and wells from 12 to 40 ft. Farming, chiefly grain, some dairying. Served by three railways. Telephone system throughout. Local markets at Pierson, Lyleton, Elva and Tilston. Average crops: Wheat, 15 bush.; oats, 80; barley, 25; flax, 14; roots, 300. First prize for wheat at Chicago Exhibition. Pop. of 2,000, chiefly British or Canadians; a few Germans and Swedish-Americans. No homesteads. Price per acre: Raw lands, \$10 to \$20; improved farms, \$20 to \$40. Write Sec. of Municipality, Pierson P.O.

**ELTON, NORTH BRANDON DISTRICT.** Area 138,240 acres, 99,000 acres cultivated. Land is slightly rolling, and well drained by ravines. Soil, clay loam 12 in., clay subsoil. Watered by a few springs. Wells 10 to 100 ft. Markets at Brandon and Winnipeg. Served by G.T.P., C.P.R. and C.N.R., main lines and branches. Good roads, churches and schools. Mixed farming, grain and stock-raising. District is noted for pure-bred Clydesdale and Percheron horses, and Shorthorn, Angus and Jersey cattle. Wheat averages 20 bush.; oats, 50; barley, 35. Numerous prizes won at Brandon Exhibition for stock and grain. Pop. 1,700, including Canadians, English and Scotch. No homesteads available. A little raw land for sale at \$20 to \$25 per acre; improved farms, \$30 to \$60. Write Sec. Treas. of Municipality, Forest Station P.O.

**MORTON.** Area 276,480 acres, 121,007 acres cultivated; an old settlement. Land is rolling. Soil, black loam, 6 to 12 ins., on clay subsoil. Watered by 5 streams from Turtle Mt. Township 1 in Turtle Mt. is hilly. Wells 18 to 40 ft. Served by C.P.R., C.N.R. and G.N.R. Leading crops: Wheat averages 18 bush.; oats, 40; barley, 35; flax, 15. Pop. 2,000, including Canadians, Eng-



Wheat Field in Dauphin District. See page 61.

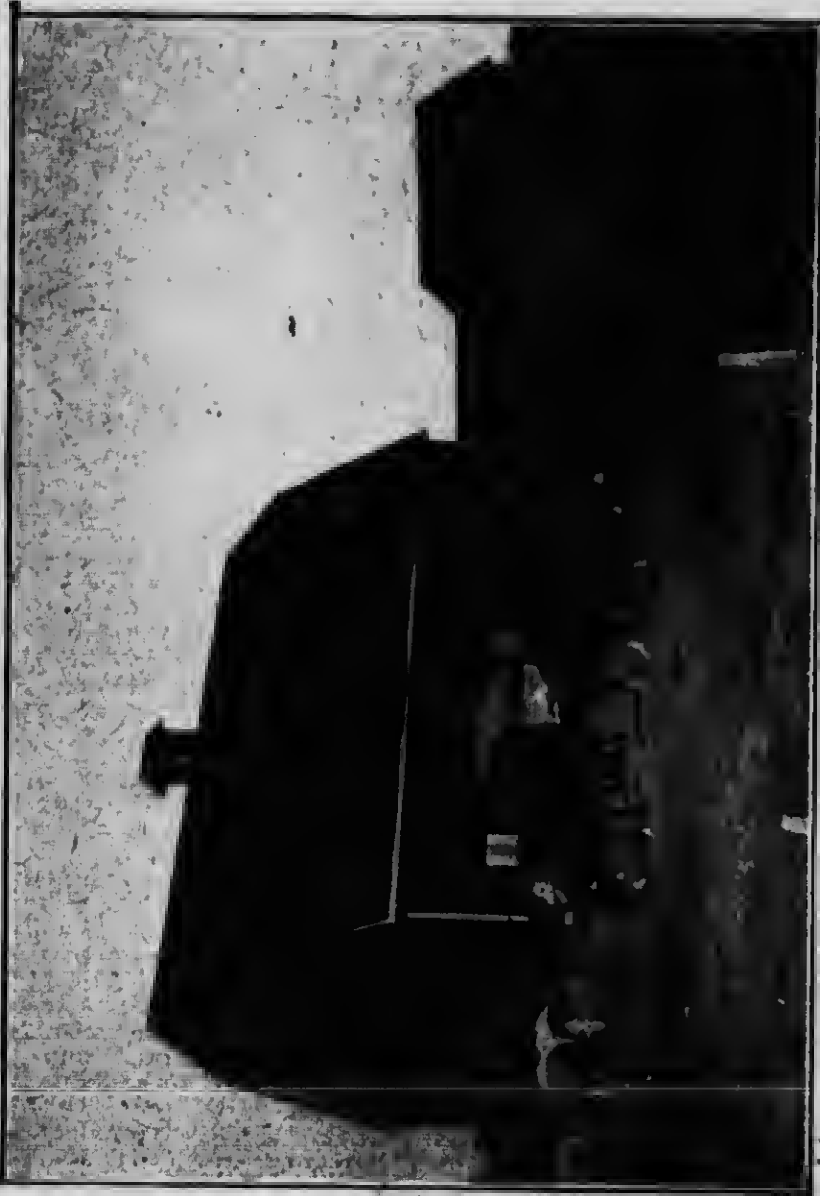
lish, Scotch and Irish. Among the lakes of Turtle Mt. is a summer resort, with good fishing. Average price per acre of improved farms, \$25 to \$50. No homesteads available. No raw lands for sale. Write Sec.-Treas. of Municipality, Boissevain, P.O.

**OAKLAND.** Area 137,445 acres, 86,612 acres cultivated. Land is slightly rolling. Soil, sandy loam in n.e. corner. The rest, black loam, 1½ to 3 ft. Frable clay subsoil. Watered by Assiniboine and Souris Rivers and numerous creeks. Wells 15 to 70 ft. Local markets at Wawanesa and Rounthwaite on C.N.R., and Methven, Nesbitt and Carroll on C.P.R. Served also by G.N.R. Grain growing and horse raising. Wheat averages 20 bush.; oats, 40; barley, 28; flax, 21. Pop. 3,100, including Canadians, English, Scotch and Irish. No homesteads available. Price per acre: Raw lands, \$15 to \$30; improved, \$25 to \$40. Write Sec.-Treas. of Municipality, P.O. Box 26, Wawanesa.

**PIPESTONE.** Area 276,480 acres, 171,442 acres cultivated. Land varies from flat to hilly. Soil, from sandy loam to clay loam, on sand-clay subsoil. Watered by Pipestone Creek and others. Wells 8 to 100 ft. Served by C.P.R. and C.N.R. Local markets. Grain-growing district. Wheat averages 18 bush.; oats, 45; barley, 35; flax, 15. Pop. 2,619, including Canadians, Scotch, English. Hudson's Bay Co., Can. N.W. Lands Co. and C.P.R. have lands for sale. No homesteads available. Average price per acre: Raw lands, \$15 to \$20; improved, \$20 to \$35. Write Sec.-Treas. of Municipality, Reston.

**SIFTON.** Area 254,475 acres, 54,954 acres cultivated. Land, generally, is rolling; in parts hilly, with flats between the ridges. Soil is partly light loam with clay subsoil; in parts sandy. Served by C.P.R. main line and 2 branches, and C.N.R. 2 miles from Oak Lake. Watered by Assiniboine River and Oak Lake. Well adapted to general farming. Much wheat is grown and coarse grains. Stock-raising is very profitable. Wheat averages 20 bush.; oats, 30; barley, 30. At Oak Lake there is a flour mill (daily capacity 750 bbls.). Poplar, elm, ash, and maple are found in the valley of the Assiniboine River. Pop. about 2,100, including Canadians, Scotch, English, French Canadians. Price per acre: Raw lands, \$10 to \$14; improved, \$15 to \$45. No homesteads available. Good duck shooting near Oak Lake. Write Sec. Bd. Trade, Oak Lake.





The Stock of a Prosperous Farmer.

- TURTLE MOUNTAIN.** Area 257,359 acres, 113,135 acres cultivated. Land is rolling. Soil, black loam, clay subsoil. Watered by streams. Wells from 16 to 40 ft. No land is further than 8 miles from a railway station. Wheat is leading crop. Oats, barley, flax and roots do well. Pop. about 4,000, chiefly Canadians. Average price of raw lands, \$10 to \$20, improved farms, \$30. There is a beautiful summer resort at Killarney Lake. Write the Pres. Bd. of Trade Ningsa.
- WALLACE.** Area 276,190 acres, 100,000 acres cultivated. Land is rolling prairie, with poplar groves in some parts. Soil, black loam, 1 to 3 ft. deep, with clay subsoil. Watered by Assiniboine and Pipestone Rivers and tributary creeks. Wells 10 to 50 ft. Served by C.P.R. main line from s.e. to n.w. corner. C.P.R. branches running north from Virden and Kirkella; C.N.R. from south to Virden and C.P.R. branches. Mixed farming. There are 2 creameries. Local markets at Elkhorn, Virden, Hargrave and Kirkella. Well served with rural schools. Municipal phone system, 2,000 subscribers. A very reliable wheat-producing district. Pure-bred stock is a specialty of the district. Wheat averages 20 bush.; oats, 40; barley, 30; flax, 15. Root crops are heavy. Canadians, English and Scotch are represented. District won championship for wheat at Provincial Seed Fair. No homesteads available. Average price of raw lands, \$15 to \$25; improved farms, \$20 to \$40. See below under "Announcements." Write Sec. Bd. of Trade, Elkhorn.
- WHITEWATER.** Area 13,824 acres, 112,380 acres cultivated. Land is rolling. Soil, black loam on heavy clay subsoil. Watered by Souris River. Wells 40 ft. Served by C.N.R. and G.N.R. Local markets at Minto, Elgin and Fairfax. Grain growing and some stock. Wheat averages 20 bush.; oats, 45; barley, 50; flax, 12. Pop. about 1,800, mostly Ontario Canadians. A very rich district with good buildings. No homesteads available. Price per acre: Raw lands, \$25; improved, \$40. Write Clerk of the Municipality, Minto P.O.
- WINCHESTER.** Area 173,497 acres, 91,136 acres cultivated. Mostly rolling or flat land. Soil, clay loam, 12 to 18 ins.; clay subsoil. Watered by wells 15 to 200 ft. Markets at Deloraine, Hartney, Elgin and Whitewater. Served by C.P.R. and C.N.R. Farming, chiefly grain. Wheat averages 18 bush.; oats, 40; barley, 37; flax, 16. Prizes won for wheat at Winnipeg, Brandon and World's Competition, New York. Pop. 1,157; including Can-



Pumpkins Grown in East Kildonan.

adians, British and Belgians. An area of lignite coal has been temporarily abandoned owing to water. Price per acre: Scrub, \$10 to \$12; prairie, \$25 to \$30. No homesteads available. Write Sec.-Treas. of Municipality, Deloraine P.O.

**WOODWORTH.** Area 197,870 acres, 155,245 acres cultivated. Lying north of Sifton municipality. Land is generally rolling, broken by ravines in places. Soil is heavy clay loam; very good for wheat. Watered by Assiniboine River. Served by main line of C.P.R. and two other lines to the north. There is some timber in the River Valley in the south and north. Mixed farming prevails. Horses, cattle and hogs are raised. Pop. 1,750. Write Sec. Bd. Trade, Oak Lake.

### ANNOUNCEMENTS

*Announcements concerning lands will be accepted only from responsible firms of recognized standing, personally known to the Editors. The Editors reserve the right to edit matter received. For descriptions of districts referred to in the headings of these Announcements, see above.*

**NOTE.**—The Government of Manitoba is not responsible for announcements under this heading.

**CANADIAN PACIFIC RAILWAY LANDS.** *Mixed farming may be carried on under ideal conditions in Manitoba, which, in addition to grain-growing lands of the richest quality, has all the important factors necessary to the successful raising of live stock. The Canadian Pacific Railway Company has for sale at very reasonable prices several hundred thousand acres of land in this province. Map and prices may be obtained on application to J. S. Dennis, Assistant to the President, C.P.R., Department of Natural Resources, Calgary, Alta.*

**RED RIVER VALLEY.** *This famous district, 40 miles broad by 65 miles long, comprises the municipalities of St. Vital, Macdonald, De Salaberry, Richot, Montcalm and Franklin. Write to Dept. Agriculture, Winnipeg, for pamphlets issued by the Southern Manitoba Red River Valley Association.*

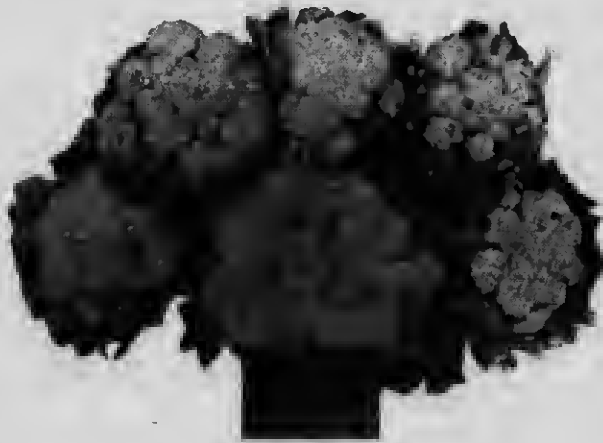
**WALLACE MUNICIPALITY—ELKHORN DISTRICT—R. DE W. WALLER.** *I have raw lands for sale in this district at moderate prices and on easy terms, within 3 to 7 miles of Elkhorn town, on main line of C.P.R. Also improved farms, served by creamery. Elkhorn District has won numerous prizes for wheat in competition with the Province. My experience of 20 years in the district is at the disposal of intending farmers or investors. Correspondence invited. R. de W. Waller, Elkhorn, Man.*



Manitoba Geese are Good Eating. See Sport on page 13.

**WINNIPEG DISTRICT.** Free homesteads of 160 acres each may be had within 125 miles of Winnipeg, with government and school lands at from \$3 to \$6 per acre. Excellent mixed farming country, being the bed of a prehistoric ocean; the land is very fertile and produces large crops without fertilizer of any sort. Average yield of bushels per acre in 1911: Wheat, 21; oats, 47; barley, 31. Excellent grass for hay grows wild and costs about \$1.25 per ton to put up in stack. Winnipeg's 203,000 people, with 20,000 added in suburbs, affords excellent market for all produce. See under Descriptions of Towns. Maps and full information furnished free by Chas. F. Roland, Commissioner, Winnipeg Development and Industrial Bureau, Permanent Exposition of Industries and Resources, Winnipeg, Man.

**WINNIPEG DISTRICT—GOODWYN & COMPANY.** We are Agents for the sale and purchase of land, and own and control some of the choicest inside property in the City of Winnipeg. References, Union Bank of Canada, London, England, or Winnipeg, Canada. Goodwyn & Company, Nanton Bldg., Winnipeg, Canada.



# MANITOU

*Live  
Here  
and  
Succeed*

Centre of one of  
the finest wheat and  
stock raising districts  
in Southern Manitoba

*See description of Pembina  
Rural Municipality on p. 57  
and of Manitou on p. 31.*



Natural Gas Well at Manitou

Write for further information to  
Secretary, Board of Trade - Manitou, Manitoba

111619

48

**FOR ABSOLUTELY RELIABLE  
INFORMATION CONCERNING**

**HOMESTEADS  
IMPROVED FARMS  
CENTRAL FARMERS'  
MARKET  
AND  
MANITOBA  
GENERALLY**

**WRITE**

**C. J. WHELLAMS, BUSINESS SECRETARY**

**The  
Million for Manitoba League  
Winnipeg, Man.**





# MIXED FARMING

Manitoba conditions are ideal for live-stock of all kinds. The richness of Manitoba native grasses and the quality of Manitoba coarse grains combine with climatic advantages and a clamoring market to ensure SUBSTANTIAL PROFITS.



