

**CIHM
Microfiche
Series
(Monographs)**

**ICMH
Collection de
microfiches
(monographies)**



Canadian Institute for Historical Microreproductions / Institut canadien de microreproductions historiques

© 1998

Technical and Bibliographic Notes / Notes techniques et bibliographiques

The Institute has attempted to obtain the best original copy available for filming. Features of this copy which may be bibliographically unique, which may alter any of the images in the reproduction, or which may significantly change the usual method of filming are checked below.

L'Institut a microfilmé le meilleur exemplaire qu'il lui a été possible de se procurer. Les détails de cet exemplaire qui sont peut-être uniques du point de vue bibliographique, qui peuvent modifier une image reproduite, ou qui peuvent exiger une modification dans la méthode normale de filmage sont indiqués ci-dessous.

- Coloured covers / Couverture de couleur
- Covers damaged / Couverture endommagée
- Covers restored and/or laminated / Couverture restaurée et/ou pelliculée
- Cover title missing / Le titre de couverture manque
- Coloured maps / Cartes géographiques en couleur
- Coloured ink (i.e. other than blue or black) / Encre de couleur (i.e. autre que bleue ou noire)
- Coloured plates and/or illustrations / Planches et/ou illustrations en couleur
- Bound with other material / Relié avec d'autres documents
- Only edition available / Seule édition disponible
- Tight binding may cause shadows or distortion along interior margin / La reliure serrée peut causer de l'ombre ou de la distorsion le long de la marge intérieure.
- Blank leaves added during restorations may appear within the text. Whenever possible, these have been omitted from filming / Il se peut que certaines pages blanches ajoutées lors d'une restauration apparaissent dans le texte, mais, lorsque cela était possible, ces pages n'ont pas été filmées.
- Additional comments / Commentaires supplémentaires:

- Coloured pages / Pages de couleur
- Pages damaged / Pages endommagées
- Pages restored and/or laminated / Pages restaurées et/ou pelliculées
- Pages discoloured, stained or foxed / Pages décolorées, tachetées ou piquées
- Pages detached / Pages détachées
- Showthrough / Transparence
- Quality of print varies / Qualité inégale de l'impression
- Includes supplementary material / Comprend du matériel supplémentaire
- Pages wholly or partially obscured by errata slips, tissues, etc., have been refilmed to ensure the best possible image / Les pages totalement ou partiellement obscurcies par un feuillet d'errata, une pelure, etc., ont été filmées à nouveau de façon à obtenir la meilleure image possible.
- Opposing pages with varying colouration or discolourations are filmed twice to ensure the best possible image / Les pages s'opposant ayant des colorations variables ou des décolorations sont filmées deux fois afin d'obtenir la meilleure image possible.

This item is filmed at the reduction ratio checked below /
Ce document est filmé au taux de réduction indiqué ci-dessous.

	10x		14x		18x		22x		26x		30x	
							✓					
	12x		16x		20x		24x		28x		32x	

The copy filmed here has been reproduced thanks to the generosity of:

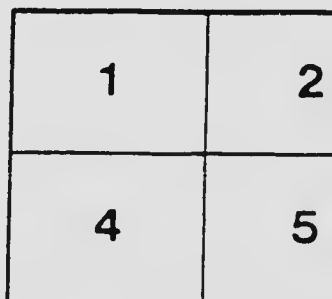
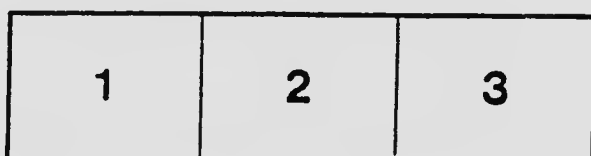
British Columbia Archives and Records Service.

The images appearing here are the best quality possible considering the condition and legibility of the original copy and in keeping with the filming contract specifications.

Original copies in printed paper covers are filmed beginning with the front cover and ending on the last page with a printed or illustrated impression, or the back cover when appropriate. All other original copies are filmed beginning on the first page with a printed or illustrated impression, and ending on the last page with a printed or illustrated impression.

The last recorded frame on each microfiche shell contains the symbol \rightarrow (meaning "CONTINUED"), or the symbol ∇ (meaning "END"), whichever applies.

Maps, plates, charts, etc., may be filmed at different reduction ratios. Those too large to be entirely included in one exposure are filmed beginning in the upper left hand corner, left to right and top to bottom, as many frames as required. The following diagrams illustrate the method:



L'exemplaire filmé fut reproduit grâce à la générosité de:

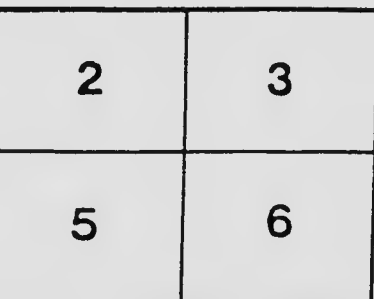
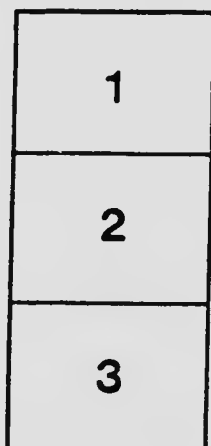
British Columbia Archives and Records Service.

Les images suivantes ont été reproduites avec le plus grand soin, compte tenu de la condition et de la netteté de l'exemplaire filmé, et en conformité avec les conditions du contrat de filmage.

Les exemplaires originaux dont la couverture en papier est imprimée sont filmés en commençant par le premier plat et en terminant soit par la dernière page qui comporte une empreinte d'impression ou d'illustration, soit par le second plat, selon le cas. Tous les autres exemplaires originaux sont filmés en commençant par la première page qui comporte une empreinte d'impression ou d'illustration et en terminant par la dernière page qui comporte une telle empreinte.

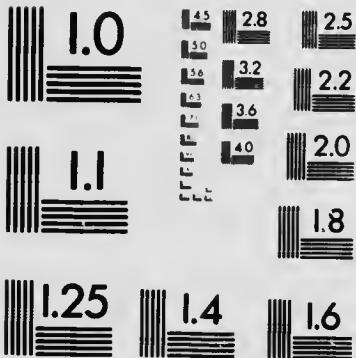
Un des symboles suivants apparaîtra sur la dernière image de chaque microfiche, selon le cas: le symbole \rightarrow signifie "A SUIVRE", le symbole ∇ signifie "FIN".

Les cartes, planches, tableaux, etc., peuvent être filmés à des taux de réduction différents. Lorsque le document est trop grand pour être reproduit en un seul cliché, il est filmé à partir de l'angle supérieur gauche, de gauche à droite, et de haut en bas, en prenant le nombre d'images nécessaire. Les diagrammes suivants illustrent la méthode.



MICROCOPY RESOLUTION TEST CHART

(ANSI and ISO TEST CHART No. 2)



APPLIED IMAGE Inc

1653 East Main Street
Rochester, New York 14609 USA
(716) 482 - 0300 - Phone
(716) 288 - 5989 - Fax

NWP
971.96
E554
1710



The Empress

VICTORIA B.C.



THE EMPRESS HOTEL

VICTORIA, BRITISH COLUMBIA



THE
CANADIAN PACIFIC RAILWAY
HOTEL SYSTEM

FEW Pacific seaboard cities can boast as does Victoria the possession of such distinctive landmarks as British Columbia's massive Parliamentary pile, and the palatial **Empress Hotel**, each emblematic of that catholicity of taste and sterling solidity characteristic of this most English of Western cities. Of Parliament Buildings and **Empress Victorians** are rightly proud. They mark superlatives in their respective spheres, and each is an object lesson in the miraculous evolution of the West. What fairy lore transcends the tale of this latest in the Canadian Pacific hotel chain, an architectural monument to progress, where was, but a decade since, a dreary tidal flat?

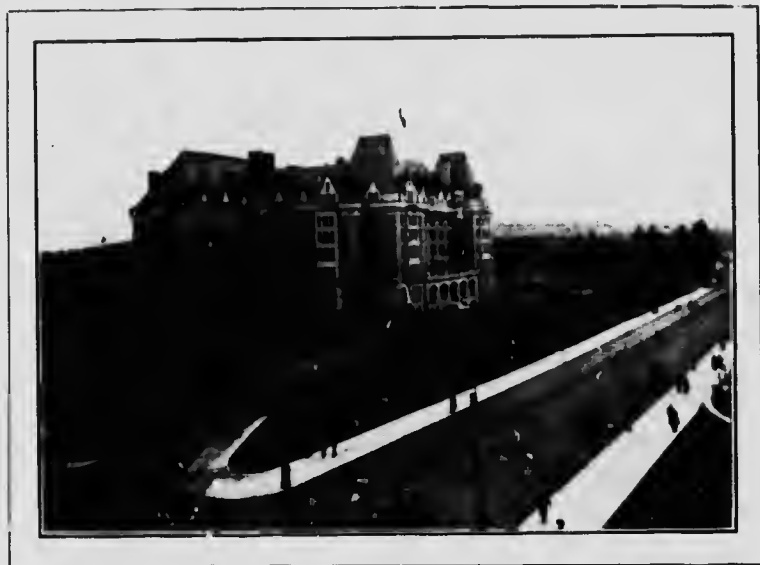
Appropriately the **Empress** faces the golden West. A striking example of the French Renaissance, its chateau beauties will be more impressively emphasized when Nature shall have overtaken Enterprise and completed, with flower and tree accessories, the outline picture of today.

Exteriorly a first glimpse of the stately structure carries assurance of restfulness, comfort and good taste within. Here is no glaring architectural obtrusiveness. The eye finds naturally, in a second glance, the suggested environment of quiet, arboreal walks and flower-gemmed lawns. The house is effectively placed in four acres of beauty-crowded gardens, designed by Mr. Wallace, of which rustic pergolas on three sides, covered with wonderful roses, clematis and other climbers, are distinctive features. On the north exposure is a rock-bound lakelet fed by a mimic mountain brook, the leaping waters whispering of sylvan delights.

Room, too, there is for three fine tennis courts, a croquet lawn on the lower terrace, a course for archery, and a bowling green, as well as kitchen gardens obscured by ranks of roses, from which come special delicacies for favoured guests.

Entering either by the great swinging doorway of plate, set midway in the western front, or by the carriage and motor-car entrance at the southern end of the hotel building, protected against occasionally inhospitable weather by an imposing *porte cochere*, one finds all favorable premonitions well sustained. Restfulness—of body, of eye, of mind—is the predominant note. To the very smallest detail the place bespeaks quiet elegance and the perfection of comfort.

GREEN is the general color scheme; green with dull, Flemish-finished English oak, in which the office—with incidental **Cloak Room, Cigar Stand, Telegraph Office** and **Telephone Exchange**—is panelled to a height of seven feet. Huge exposed beams and chaste stained glass combine therewith to give the stateliness in effect of an old English Hall. And this effect is both preserved and accentuated in the **Main Rotunda** with its massive fireplaces and handsome dual staircases, from which one gains the **Palm Room, Dining Hall, Guest Rooms** and allied departments in their course.



This noble rotunda is a place of sunshine and light and cheer. Its ranks of broad windows overlook the Harbor and the Sooke Hills beyond. Its harmonious decorations are all in russet gold and green. The foot sinks in its rich carpets as in a deep bed of moss. Luxurious couches exercise weariness. The room and its appointments are symbolic of all that is best in modern hostelry art and science. And the symbol is true.

Although only built two years ago an addition was finished last year and the foundations are in for an east-front extension to contain ball room and banqueting hall on the ground floor and added guest rooms above, to be finished this year,

152189

[3

AS one would naturally expect, the equipment and mechanical facilities of **The Empress** illustrate the perfection of Twentieth Century hotel auxiliaries. Electricity is an ever-in-evidence servant, no fewer than fourteen dynamos being utilized to manifold purposes, from the washing and ironing processes in the ultra-modern laundry, lighting the house, and furnishing motive power for the fast express elevators, to automatically regulating the clock system throughout the entire hotel, and keeping the viands uniformly hot in the big dining hall. No fewer than one hundred and ninety persons comprise **The Empress** staff, the heads of departments being as follows: H. B. Jackson, manager; J. H. Hutchinson, chief clerk; J. B. Penty, chief engineer; J. Fox, chief electrician; F. W. Kostenbader, chief steward; A. Schramm, maitre d'hotel; S. Maffey, chef; Miss Clark, housekeeper; H. Champlin, superintendent of laundry; A. Menard, head bellman; Geo. T. Hartley, head barman; J. W. Phillips, head porter; A. McCormick, head gardener; H. Hardy, head door porter.

The Empress has its own fire brigade under H. Stevens' able direction.



SS. PRINCESS VICTORIA

IN its facilities of communication with the Canadian and the American Mainland terminal cities, Victoria is particularly fortunate, a bi-daily service being maintained by the Canadian Pacific Railway's steamships **Princess Victoria** and **Princess Charlotte**, which are not only the fastest and best appointed vessels on the Pacific Coast, but are reputedly unrivalled in any kindred service in America. Both are English built and of Lloyds' highest rating, having been constructed under special survey, staunch and seaworthy in all respects, and combining high speed with maximum of comfort. Connection is made in four hours or less with either Vancouver or Seattle, an average speed of eighteen knots per hour being maintained. The trip from Vancouver in particular is one of surpassing beauty, the steamer threading her way through the fir-clothed archipelago of the Georgian Gulf, a scenic waterway perhaps only comparable with the far-famed Inland Sea of Japan. Victoria is also the first American port of call and last of departure for the famous C. P. R. Empress liners to Yokohama and Hong Kong, via the Inland Sea ports; and also of the Canadian-Australian steamers for Hawaiian and Australian ports, under the Canadian Pacific Railway's operation.



SS. PRINCESS CHARLOTTE

VICTORIA'S suburban and country drives, radiating in all directions and each with characteristic and peculiar beauties of land or water or tranquil pastoral pictures to unfold in panoramic succession, are famed the continent over. Some scores there are—smooth, safe and admirably maintained—offering ideal facilities for automobiling. Thanks to the firm foundation laid by those master road builders, the Royal Engineers, in pioneering days, the automobilist making Victoria his base may venture far afield into a land of varied enchantments, as perhaps nowhere else on this Pacific slope: To sylvan Goldstream—around the picturesque Saanich peninsula—out to the city's secondary park at Cedar Hill—over the new and direct scenic drive to Cowichan Bay—or by the famous Island trunk road through mighty forests and rural villages as far as Alberni, to which the C. P. R.'s steel highway is now advancing, or in the other direction to Comox. There are no serious obstacles in bad roads, or impossible grades or rickety bridges to alarm.

ROBERT Wm. CLARK

British Columbia Investments

Telephone 1092

Suite 8, Mahon Block 1112 Government St.

===== VICTORIA, B. C. =====



PROVINCIAL PARLIAMENT BUILDINGS

BRITISH COLUMBIA'S grouped public buildings, of which the parliament structure proper is the central feature, extend in neighborly proximity to **The Empress** on the southern face, they, with the great hotel and the causeway which it fronts, and the Post Office beyond, forming a succession of architectural achievements, extending round three sides of placid James Bay, which would do credit to a century's civilization. The parliamentary pile excites both the wonder and the admiration of all visitors, alike remarkable as it is for massiveness, dignity of outline and of proportions, apt demonstration of the country's richness of resources in building materials and the honest and shrewdly capable administration which alone could have secured such buildings at a cost of less than \$1,000,000. The architect of both the Parliament Buildings (rated the finest in Canada) and of **The Empress** was Mr. F. M. Rattenbury, of Victoria; and no visitor should fail to inspect the marble-pillared Sessional Chamber, the excellent Museum, and other features of interest. The Printing Bureau, Provincial Library, and special museums of minerals and of agricultural, are associated places of interest.



WATER FALLS IN GARDEN

IT has been no simple and easy matter to create beauty out of ugliness, as has been done in **The Empress** lily pond and rockery at the extreme north-westerly corner of the grounds. Given a rough bank of broken rock walling about a small mud-flat as raw materials to work upon, genius and inventiveness have combined with artistic insight to produce a miniature waterfall. It is so perfect an imitation of nature that many visitors are completely deceived. The water it may be noted, serves a double purpose, it being the exhaust flow which is here directed to beautify, having already served in a utilitarian capacity. The lakelet will shortly glisten with snowy water-lilies, while more gorgeous blooms find a congenial soil in the mimic fields below. Rock-work is an established specialty of Mr. Wallace, the superintendent gardener who is responsible for this unusual bit of landscape work, the details of which almost suggest a Japanese art influence, and will vie for beauty with any feature of the grounds.



A VIEW IN GARDEN

ONE of the centers of interest to tourists is the **Diamond and Jewelry** house of **Challoner & Mitchell**, which is located on the main thoroughfare within five minutes' walk of **The Empress**. This enterprising firm has a beautifully equipped store, and cater very largely to the American tourist requirements in English Hall-marked sterling silver, fine Sheffield plate, English oak table ware and high grade souvenir goods.

The great volume of trade with this house is, of course, in **Diamonds** and other **Precious Stones**. Owing to the fact that **Diamonds enter Canada duty-free**, and that only a nominal duty is charged on other stones, this firm are enabled to offer values which cannot be equalled by the dealers in United States.

An immense stock of loose and mounted stones is carried, purchased direct from the Amsterdam cutters, and the reliability of the house is the best assurance of quality in stones purchased.

Special arrangements are made during the summer months for meeting the requirements of tourists.

A large staff of competent salesmen is maintained throughout the year, and those entering this store will be served by men not only courteous but also thoroughly conversant with their business.

Visitors are cordially welcome in the store, whether as sightseers or prospective customers.



GOVERNMENT HOUSE



EMPERESS BUFFET

*G. H. Mumm & Co's Cordon Rouge
Vintage Champagnes, Selected Brut
and Extra Dry, with the other high class
Wines and Liquors served in this hotel are im-
ported by the well-known Wine Merchants*

Pilcher & Leiser

Victoria, Vancouver and Nelson, B. C.



ESTABLISHED 1817

HEAD OFFICE: MONTREAL

BANK OF MONTREAL

CAPITAL (all paid up), \$14,400,000.00. REST, \$12,000,000.00

General Banking Business Transacted. Exchange Bought and Sold

SAVINGS BANK DEPARTMENT

A. J. C. GALLETLY, Manager Victoria Branch



A MORNING'S SALMON CATCH IN SIGHT OF THE EMPRESS TURRETS

ALTHOUGH the common deer of Vancouver Island is so generously distributed over all parts of the country contiguous to Victoria, its heads are by no means to be despised as decorative trophies for the hall or den, the horns of the veteran bucks being beautifully balanced and branching.



It would be far easier to catalogue the places where deer hunting is not obtainable than where it is. And the facilities for a stranger's success in hunting are exceptional. Deer shooting begins with September and non-resident hunters for this or other game are required to take out an inexpensive license. The law is reasonable as to taking out trophies.

BRUSHES Tooth, Hair, Nail and Cloth



Perfumes and Dentifrices Prescriptions Have Our Best Attention
CYRUS H. BOWES
 Chemist and Druggist GOVERNMENT ST. near Yates St.

DESCENDING from the Rotunda by the northerly main staircase, one reaches the well arranged **Billiard Room**, containing not only the very finest English tables (which are most in demand) but also American tables of the most celebrated makers—five in the total number. The perfect lighting of the tables has been a special study, while in the other appointments of this department the same solicitous study of the pleasure of the guests has governed all arrangements, and the same good taste is displayed. The **Buffet** is conveniently contiguous to the billiard room, fitted in solid oak with all the art of studied simplicity, and provided with a due allowance of cosy chairs and sociably small tables. It is the commendable intention as years go by to make the billiard room a special repository of typical trophies of the chase, and already an excellent beginning has been made in this direction. Needless to say, **The Empress'** wine cellars and cigar cases have been constructed with scientific care, and stocked with full lines of the very highest grades demanded by the critical connoisseur, some of the vintages being exclusively controlled by the management under very special arrangements with the largest importers.



BILLIARD ROOM.

THANKS to the differing trade policies of differing governments, there are many articles of universal use and fashion which are both cheaper and better under one flag than another. The high grade woollens, to cite an example, are much cheaper in this British city than four hours journey south, under the Stars and Stripes. Superior qualities in underwear, hosiery, golf jackets, sweaters, flannel shirts, travelling rugs and other articles too numerous to mention, made by Dr. Jaeger's Sanitary Woollens Co., or J. & R. Morley, are examples in point. And as still others may be instanced Burberry's coats and sporting garments, Dent's gloves, Henry Heath's and Christy's hats and caps, specialties well known to discriminating buyers.

On all such lines and many more as well, the American duties are so high that the purchasers in Victoria obtain the same quality goods at what is the trade cost on the American side.

Headquarters in all such specialties of British manufactures is the establishment of W. & J. Wilson, 1221 Government St., a firm founded in 1862, and enjoying an enviable reputation for fair dealing and the qualities of all goods handled.



GOLF LINKS AT VICTORIA

QUITE as much as for the beauty of its environment or its equitable climate, Victoria is known as the gateway of one of the Western World's finest natural game preserves. Worthy sportsmen's spoil abounds in Vancouver Island, and favorite hunting grounds and fishing waters are easily accessible. The lordly wapiti (great American Elk), the bear, the wolf, the panther, and black-tail deer in countless thousands roam the island forests, while pheasants, grouse, quail, myriads of duck and geese, with many other prized game birds to which the capercaillie and black game have recently been added, and to be won but a few hours travel from the city. Vancouver Island has been termed not without reason the Fisherman's Paradise. The royal salmon is to be taken with troll within sight of **The Empress'** turrets by the veriest novice. Saanich Inlet, but a few miles' distant, is famed afar for its grilse. And the steelhead and the trout have made enduring celebrity for Campbell and Cowichan rivers and Cowichan and Shawnigan lakes, all of which are within easy reach of the city, with frequent communication.

E. G. PRIOR & CO.,

LTD. LTY.

HARDWARE

□ **IRON** □

STEEL, ETC.

**Mill and Mining Supplies
Wagons, Carriages, Farm
Implements and Machinery**

VICTORIA

VANCOUVER

KAMLOOPS

ONE of the sights, not of Victoria alone, but of Western Canada, is Beacon Hill Park in summer, when the broad, breeze-kissed slopes of this fine natural pleasure ground secured for the public by the far-sightedness of the pioneer Governor, Sir James Douglas, are ablaze with the golden broom. The broom unquestionably is Victoria's floral emblem—her glory and her pride. The Park, containing approximately 210 acres and fronting on the shimmering Straits of Fuca with the snowy Olympics beyond, has wisely been left with its grand old oaks much as nature made it, the miniature lakes with their water-fowl to delight the heart of childhood, the spacious deer park, and the rustic bridges and resting places everywhere, increasing rather than detracting from the natural general effect. Wisely again, the city's park has been preserved as a citizen's playground where the "Keep off the grass" sign is not omnipresent, and each sunny afternoon sees it thronged with laughing little folk, the fairest flowers of this floral city.

H. B. Hammond Shoe Co.

Importers of High Grade



**American
Footwear**

Sole Agents
HANAN & SON
New York

Sole Agents
WICHERT & GARDINER
New York

Pemberton Building, 621 Fort Street
VICTORIA, B. C.



SCENE IN BEACON HILL PARK

All the views in this publication were furnished by "Trio." It is impossible to give space to all the beautiful scenes on the Island, but all these can be obtained from "Trio," the leading Photo Artist on the Island.

Linklater the Tailor

*We carry exclusive patterns in English Worsted
and Scotch Tweeds*

*Suits made by us always appeal to the men of
good taste*

Address:

Broad St.

Victoria, B. C.



LADIES' PARLOR

FRED FOSTER



MANUFACTURER OF
HIGH GRADE
FURS



We wish to mention to the Lady Guests of the Empress that Victoria is the headquarters for sealing schooners. We buy direct, ship direct to London to have the skins dressed and dyed, and sell direct to the consumer. Our selection of **Sables, Dark Mink, Ermine, Foxes, Rugs, Etc.**, cannot be excelled. **Fur Garments, Stoles, Ties, Muffs, etc.** We make a specialty of **Seal Garments**. You can save fully 25% on Seal Garments by buying from us.

1216 GOVERNMENT STREET

AN atmosphere distinctly feminine and delicate pervades the **Ladies' Drawing Room** which occupies the south-western ground floor corner, overlooking the Parliament Buildings and the Harbor, with entrance from the office, close to the elevators. That woman's taste designed this lovely bower none need be told; the fact asserts itself insistently though always with modesty. Here the furnishings are in soft tones of Quaker grey and pink, pink roses for decorations and pink chintz window arrangement. The semi-grand piano is in the fashionable dull finish, and there is no hint of discord in the harmonious picture of a room for woman's delight which meets half-way the unspoken wish of dainty ladyhood.



Campbell's

1008-1010 Government St.

Sole Agents for Victoria
for Ladies' Burberry's
"Chic" Coats.

Complete stock of "Heptonette" Waterproofs and Inverness Capes, Ladies' Suits and Skirts, Golfers and Sweaters, Blouses and Muslin Dresses.

Dent's, Fowne's, Perrin's
and Maggioni Gloves.
Ladies' Fine French Gloves
from, per pair **\$1.00**

A DISTINCTIVE institution of Victoria the Beautiful, and one well pleasing to the stranger within her gates has the **Tally-Ho** excursion become in recent years, the fine equipages (giving an elevation to passengers that is unrivalled for sight-seeing) and the expert drivers and conductors employed by the **Victoria Transfer Co.**, together with the well-considered routes that are followed in the diurnal outings, enabling the visitor to obtain a very comprehensive and accurate impression of the city's chief points of beauty and its homes and home life, with infinitesimal expenditure either of time or money. The **Tally-Ho** expresses traverse all characteristically Victoria drives and bracken-hedged suburban roads, passing the established and recognized "show places"—the parks, the golf links, the notable public edifices and stately private homes, each set as a jewel in its well kept lawns and gardens. Assuredly one cannot more pleasantly or profitably employ an idle hour than in thus "doing the Tally-Ho circuit." There is in addition to the charms of the sight-seeing programme, much of diverting novelty in bowling merrily over the smooth roads that environ this western capital behind the four and six horse teams employed in this service, with drivers whose skill recalls the picturesque stage coach skippers of a vanishing west.



ONE of the pioneer institutions in which Victorians take pride, with justification by its consistent development with the progress of the times, unquestionably must be classed the varied interests congregated by the management of The Colonist Printing and Publishing Company, Limited, whose office premises on Broad street easily take rank as the most commodious and best equipped of their kind in Canada's farthest West. Scarce anyone on the Pacific Slope needs to be told that "The Colonist" is not only the pioneer public journal of Vancouver Island, but has maintained its leadership among the newspapers of Western Canada. Its mechanical facilities, both typographical and for rapid illustration, are exceptionally complete; while from a journalistic standpoint the paper sets a high and dignified standard of alert and yet reliable journalism. In connection with the newspaper production the company does business in the largest way as printers, lithographers, bookbinders and photo-engravers, the facilities in each of these departments being the most complete and thoroughly modern that money and sound experience can secure. The quality of the workmanship is maintained at the highest standard throughout.

EMPRESS GUESTS are invited to inspect our latest imports of
**Beautiful Chinese Pottery, Tables, Chairs and Lounges, Rattan
Hardwood and Grass.**

**NEW PATTERNS AND STYLES
IMPORTED DIRECT**

LEE DYE & CO.

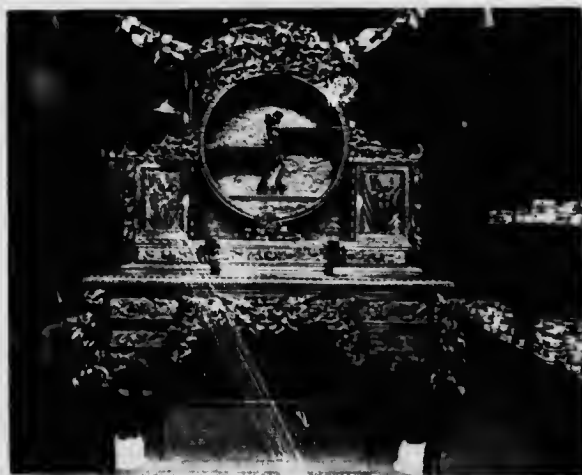
Importers, Wholesale and Retail Dealers in

**Silk, Cotton Crepe, Ivory, Silverware, Furniture
Curiosities and Oriental Goods, Etc.**

**THE SILK HOUSE
of Victoria**

Two Stores—638 Cormorant St., bet. Douglas and Broad; 707 Fert St.

ONE of the most important exports from the Orient to America, which demands the special operation of fast fleets of cargo carriers by the C. P. R. and other competing lines, is silk, which naturally plays an interesting part accordingly in the local trade of Victoria—the entry port of the Continent. Relieved of the charges of rail transportation and middlemen's percentages, silk goods are purchasable at prices obtainable at few other centers on the Continent, the choice of selection being also most extensive.



HAND CARVED FURNITURE

J. M. NAGANO & CO.

Direct Importers of **JAPANESE** Wholesale and Retail
GOODS

Satsnma Ware, Cloisonne Ware, Lacquer Ware, Brass Ware, China Ware, Workmanship in Tortoise Shell, Hand Carved Furniture, Hand Embroidered Silk Trimmings, Hand Embroidered Mandarin Coats, Kimonos, Dressing Gowns, Dress Lengths Satin Screens. All kinds of Silk and Cotton Goods.

Orders taken for all kinds of Chinese and Japanese Goods

1501 Government Street, Cor. Government, Pandora and Cormorant Streets
 and 1117 Douglas Street

THE **Palm Room**, which occupies the eastern front and opens by wide arches upon the Rotunda, is with good reason a feature of **The Empress** in which the management takes especial pride. Some 65 feet square, with its great dome of old gold glass and its ranks of windows greeting the morning sun, this fairyland is the most delightful resort of Victoria for afternoon tea or after dinner chat and cigarette. The furnishings in green, with the wealth of delicate creepers and banks of blooming flowers attest artistic genius in design and execution. The **Dining Hall** also opens upon the Rotunda, but at its northern end—a noble apartment panelled and with huge columns of the Australian rosewood, and in its completeness typifying good taste. The Dining Hall appointments, as one might well conclude, are in thorough accord, the napery (specially woven in Ireland) carrying out the Company's Imperial idea—the rose, the shamrock, the thistle and the Canadian Maple Leaf, surmounted by the Imperial Crown. The silver is one of the old royal patterns of England, and known to all collectors, but with the Crown here introduced in place of the scallop shell. **The Grill** is situated on the basement floor, with entrances from the street and from the billiard hall. Here, too, are faithfully carried out the principles of dignity, elegance and comfort, the general design being essentially old English. The Grill will henceforward be open daily from noon to midnight, and caters for city patrons as well as the resident guests.

What gives certain evidence of being a most striking and artistic feature of **The Empress** lobby is the collection of game heads which it is proposed to employ extensively in the general scheme of adornment. Two splendid cariboo heads and one souvenir of the departed and shaggy bison of the plains form the nucleus of a collection which, in a short time, will be the admiration of visitors and an effective



advertisement of the sporting facilities of the Canadian West.



PALM ROOM



DINING ROOM



EMPRESS LOBBY



EMPRESS GRILL

WHAT is locally known as The Gorge, a pretty reversible waterfall created by the ebb and flow of the tide through a picturesque minor canyon, has, ever since the Indian village of Camosun became the white man's Victoria, been rightly rated one of the premier attractions of the city. Situated but two miles approximately from **The Empress**, it is conveniently and quickly reached by motor car or carriage, or by the clean and comfortable street cars of the B.C. Electric Railway Co. Above the Gorge, sheltered from all the winds and extending to charming beaches on the higher basin, the enterprise of the street railway company has provided what is to-day Victoria's most popular out-of-door resort—the Mecca of picknickers and bathers and this young Capital's nearest approach to the White City on Coney's sands. The Japanese tea gardens afford a very realistic glimpse of Mikadoland, while a prettier picture is not often found than this artistically planned and admirably conducted park on a summer evening, when the effectiveness of the illuminative scheme may be appreciated, and both land and water are animate with happy pleasure-takers. An excellent orchestra and open air bioscope entertainment of quality are gratuitously provided during the summer season—this too being an example of the enterprise of the street railway company. The facilities for both boating and bathing are at this park the best in Victoria, the water being many degrees warmer than in the open water contiguous to the City, while to many minds the upper reaches of the Arm, —above Craigflower with its historic school —are its special beauty spots. The Upper Basin is a picknicker's paradise, divided from Esquimalt harbor by a few feet only.





EMPRESS ROSE GARDEN

VICTORIA vies with Portland for the distinction of being known as the Rose City of the Pacific Coast, and nowhere is this royal flower of England to be found attaining higher perfection than in **The Empress** rose garden. The large pergola which forms so conspicuous a feature of the landscape gardening plans for utilizing the four odd acres of grounds in which **The Empress** is placed, display to the fullest advantage the favorites among the climbers, while altogether more than thirty representatives of the rose are found in bloom in **The Empress** gardens.

The gardens of **The Empress** reflect the skill as a rockery and landscape gardener of M. A. Flewin, whose nurseries and greenhouses at 866 Heywood Avenue, are also celebrated for their specialties of bulbs, roses and hardy plants. Many of these are naturally the choice importations of the Far East, which owing to the convenience and economy of transportation facilities are here obtained with far less expenditure than elsewhere in America. The Flewin Nurseries are a long established institution of Victoria, and nowhere are the roses that make Victoria famous found to attain a higher degree of rare perfection.

THE spirit of restfulness especially pervades **The Empress** guest rooms—not restfulness only of the body, but of the eye and, sub-consciously the mind. A tone of quiet elegance is the keynote of every apartment, equally of the suites with sitting rooms and private baths, and of the most unpretentious chamber which the last arriving visitor is fortunate to secure. Carpets of velvety green and curtains of daintiest chintz are notable features; while the furniture throughout is in solid mahogany, inviting arm-chairs and beds of solid brass with satin finish entering into friendly rivalry in wooing invigorating repose. The springs were specially made as were the mattresses. The characteristic attributes of good taste, originality and finished craftsmanship are stamped on every item and detail of the equipment. From the broad windows, an incomparable view is obtained of the passing procession that makes the city's life, the busy harbor, and the shimmering straits with their background of lofty mountains on the one side—on the other the forest clothed hills of Sooke. All guest rooms throughout the house are large, airy, well ventilated and supplied with such modern conveniences as the room telephone, the electric reading light—the last words in appointment.



A BEDROOM SUITE



SILK GOODS



When you visit Victoria, be sure to call on the Oriental Importing Company and inspect our splendid stock of Silks. Everything is of the finest quality to be obtained on the market, and has been selected with special care to meet the requirements of our patrons. Our select stock of beautiful hand-embroidered Kimonos, Opera Coats, Shawls, etc., cannot be surpassed for elegance, beauty of design and quality.

We carry the largest stock of Pongee Silks on the Pacific Coast, all of which is guaranteed. Being direct importers, we are thus in a position to mark down prices that defy competition.

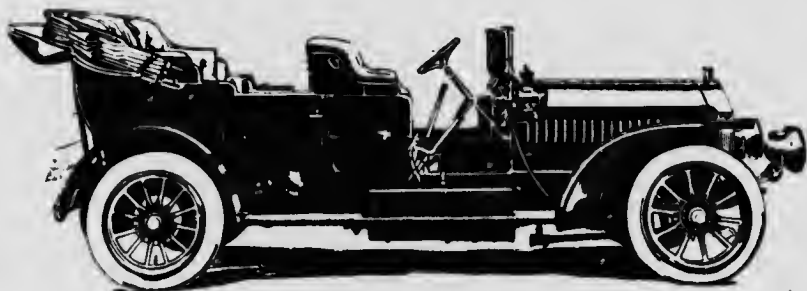
Orders by mail promptly attended to. Samples and prices mailed to any address free of charge.

ORIENTAL IMPORTING COMPANY

WHOLESALE AND RETAIL

510 Cormorant Street, opposite E. & N. Ry. Depot

VICTORIA, B. C.



A. H. STYLES & CO.

Who operate the largest and most up-to-date Garage in B. C. have a Private Telephone installed in this hotel for the convenience of those wishing to hire Automobiles either for short runs around the City or extended trips up the Island.

Visitors bringing their own Cars can arrange to have them fetched from hotel, garaged, washed and returned at any desired time.

PHONE 2058

IT is as a trading center and delightful place of residence or resort that Victoria is better known than as a manufacturing city, several of the retail establishments carrying the heaviest and most valuable stocks on the Coast in their respective lines, and being well worthy of inspection whether or not one be on purchase intent. As the headquarters of the Pacific whaling, of one of the pioneer export lumbermills of the Coast, and of salmon canneries demonstrating perfect modern methods in preparing this royal fish for the world's markets, the industrial enterprises of the city in their special interest well repay inspection. And all are so congregated that a visit to each entails small sacrifice of time.

The Staneland Co., Limited

"The Paint and Varnish House of Victoria"

PAINT MAKERS

Wholesale and Retail Dealers in Painters' Supplies

Sole Agents in B. C. for

Burrell's Warranted Genuine English White Lead and
Linseed Oil

Pratt and Lambert's Varnishes

"Duresco" Washable Water Paint

The Staneland Co., Limited

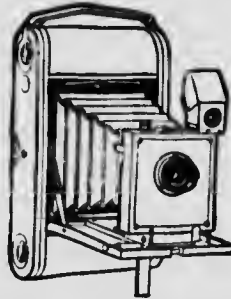
VICTORIA

PRINCE RUPERT

A FEW FACTS WORTH KNOWING

We carry the largest and most complete stock of GUNS
and AMMUNITION in the city.

KODAKS



FILMS

Also a full line of Tennis, Golf, Baseball and Cricket Goods.

J. R. COLLISTER

1321 GOVERNMENT ST.

VICTORIA, B. C.

THE EMPRESS is supplied with Creamery Products
from the

Victoria Creamery and Milk Supply Co., Limited

G. N. SUTTON, Manager

Manufacturers of Finest Creamery Butter
Dealers in Butter, Eggs, Milk, Cream,
Ice Cream, etc.

BROAD STREET, VICTORIA, B. C.

THE ethnological department of the Provincial Museum, the eastern feature of the Parliament group, is especially celebrated among all students of aboriginal life, arts and customs, the Indians of British Columbia, (and more particularly the Haidahs) being noted for their weaving and their skill in carving. Excellent examples of these and rare relics of the passing race are also to be seen at Aaronson's Museum, on Government street, where visitors whether purchasers or not are always cordially welcome. Long familiarity with the Indians has made Mrs. Aaronson acquainted with all their curious legends and fantastic imagery.



The Reliable CURIO STORE of Indian and Alaskan Baskets and Totems

Mrs. A. A. Aaronson's
MUSEUM

DEALER IN

Antique Jewellery, Old Brasses, China, Sheffield
Plate, Old Furniture, Etc.

SOUVENIRS OF ALL KINDS

1315 GOVERNMENT ST., VICTORIA, B. C.

THE bison of the plains for several decades past regarded as extinct, through wanton and promiscuous slaughter, are again—thanks to the enterprise of the Canadian Government—being restored to herds of worthy proportions. In their wild freedom, the wood buffalo have their principal habitat at Great Slave Lake, while nowhere are the plains buffalo to be seen in greater number or more appropriate surroundings than in the Canadian National Park at Banff, contiguous to the Canadian Pacific Railway's famous mountain hotel. The herds have recently received large accessions through the purchase by the Canadian Government of the entire band from the Flathead Reservation, just across the line.



F. R. STEWART  A. BRENCHLEY
1894-1910

F. R. STEWART & CO.

Wholesale Fruit and Provision
Merchants

Cable Address: Stewart, Vancouver Stewart, Victoria
Codes: A B C 4th and 5th, Revised Citrus, Revised Economy, Pacific
Coast, Western Union

New Warehouse: 541-545 Yates Street, Victoria

VICTORIA

VANCOUVER



TZOUHALEM HOTEL

BOTH at Duncan and at Cowichan Lake excellent hotel accommodation is provided, the Tzouhalem of Duncan (its Indian name phonetically Zouhalem), and the Lakeside, being historic hostelrys that have had many notable guests, H. R. H. the Prince of Wales among the number.

STUDY YOUR HEALTH

DRINK

Silver Spring Lager Beer

Ale and Stout

Manufactured from MALT and HOPS only
A Taste Will Convince You
Ask for It Always and Everywhere

The Silver Spring Brewery, Ltd.



COWICHAN LAKE

COWICHAN is indeed to-day a magic word for trout fishers the wide world over, the scenery of both lake and river being superb. The favored method of fishing the Cowichan is to begin operations at the Lake, descending the rapids under Indian pilotage—a never-to-be-forgotten and fascinating voyage. En route, midway between the two canyons, and but ten miles from Duncan, the railway base, a camp is being established by **The Empress** for the convenience of guests, a canvas dining hall and dormitory tents, for both ladies and gentlemen, being models of woodland comfort, and every auxiliary facility being afforded for the enchantment of the delights of this unique experience of backwoods life and adventure. In time this camp of tents is to give place to a rustic chalet. The most suitable equipment for Vancouver Island fishermen is that which is locally obtained. The specialist for fishing impedimenta is Mr. G. T. Fox, of M. & H. A. Fox, 1120 Government street, who as one of the most expert fishermen of the Western lakes and streams, places his extensive local knowledge and experience freely and cheerfully at the disposal of visitors. His advise is always to be relied upon, and his information as to water conditions throughout the season, and as to the flies most favoured by the canny trout.

THE constantly growing army of travellers continually speeding through Canada, over her far-flung prairies or in the shadows of her giant mountain peaks, undoubtedly derive a very considerable proportion of their excellent impressions of this great Dominion, sub-consciously, through the



HOTEL VANCOUVER, VANCOUVER, B. C.
LAKE LOUISE HOTEL, FIELD, B. C.

sustained superior quality of the hotel accommodations across the Continent, in the provision of which the Canadian Pacific Railway Company is doing an incalculably valuable service to the country.

The "Empress" at Victoria today enjoys world-wide repute with discriminating travellers. The "Hotel Vancouver," now in process of transformation and complete modernization, offers



BANFF SPRINGS HOTEL, BANFF, ALTA.

like most tentations comfort and luxury in the magic metropolis for which it is named.

At the delightful mountain resorts of Glacier and Field, Emerald Lake and Lake Louise, picturesque chalets built, equipped and conducted to satisfy the ultra-fastidious, arouse the enthusiasm of even the most blasé habitués of European fashionable hostelryes; while at Siemons, at Revelstoke, and



THE ROYAL ALEXANDRA HOTEL, WINNIPEG, MAN.

at Laggan are situated hotels included in the Company's carefully supervised system, and as such representing the very last word in each essential of the traveller's comfort, convenience or pleasure.

The fame of the Banff Hotel is as far-reaching, as enduring and as well-founded as that of the Alpine wonderland, the tumultuous river, the health-restoring hot springs or the characteristic National Park of which it is the center and capital.



PLACE VIGER HOTEL,
MONTREAL

CALEDONIA SPRINGS
HOTEL,
CALEDONIA
SPRINGS,
ONT.



Yet farther on on the march to meet the rising sun, the "Royal Alexandra" at Winnipeg, the "Place Viger" at Montreal, and the "Chateau Frontenac" at ancient Quebec are, each in its place in the continental pilgrimage, important factors in Canadian life and development, architecturally and in every other way unqualifiedly worthy of this greatest of Britain's dominions.

And to complete the Company's chain of famed hotels, there are found in the "Algonquin" and "The Inn" at St. Andrews.
38]

St. Andrews by the sea is New Brunswick's most charming summer resort. Beautifully located with numerous attractions to offer young and old, including splendid bathing.

The Algonquin Hotel, open June to September, is well arranged to supply the needs of its summer patrons and visitors to this beautiful resort will find every comfort anticipated by a considerate management.



CHATEAU
FRONTENAC.
QUEBEC



ALGONQUIN HOTEL,
ST. ANDREWS,
N. B.

The MacAdam Station Hotel at MacAdam Junction, N. B., and the "Caledonia Springs Hotel" at Caledonia Springs, Ont., are caravansseries worthy to be taken as models of what complete twentieth century hotels should be—in appeal to the artistic sense, the demands of comfort, of convenience, the palate and the purse.



After the Game

Drink a bowl of

THORPE'S GINGER ALE

Points of Special Interest

The Parliament Buildings
The Provincial Museum
Esquimalt Forts and Naval Yards
Beacon Hill Park
The Gorge and Gorge Park
Songhees Indian Reservation
Aaronson's Indian Museum
Oak Bay and Macaulay Golf Links
Government House
Carnegie Library
Victoria's Chinatown
Oriental Importing Company
Esquimalt Dry Dock

THE B. C. FUNERAL FURNISHING CO.

"HAYWARD'S"

1016 GOVERNMENT STREET

VICTORIA, B. C.

ESTABLISHED 1897

All calls promptly attended to night or day by an experienced and courteous staff.

We carry the largest and best assorted stock in the Province.

We make a specialty of undertaking, and give the best possible service, for the reason that we have everything modern both for the embalming process and for general work.

Telephones 2235, 2236, 2237, 2238, 2239

CHAS. HAYWARD, President
REGINALD HAYWARD, Sec.-Treas.
FREDERICK CASELTON, Manager





