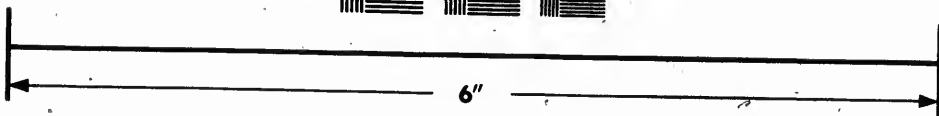
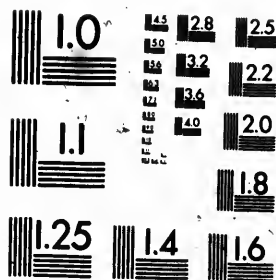


**IMAGE EVALUATION  
TEST TARGET (MT-3).**

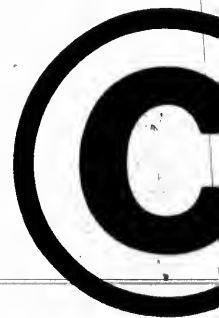


Canadian Institute for



**Photographic  
Sciences  
Corporation**

23 WEST MAIN STREET  
WEBSTER, N.Y. 14580  
(716) 872-4503



**CI  
Mi  
Ser  
(Mo**

**CIHM  
Microfiche  
Series  
(Monographs)**

**ICMH  
Collection de  
microfiches  
(monographies)**



**Canadian Institute for Historical Microreproductions / Institut canadien de microreproductions historiques**

**© 1992**



The copy filmed here has been reproduced thanks to the generosity of:

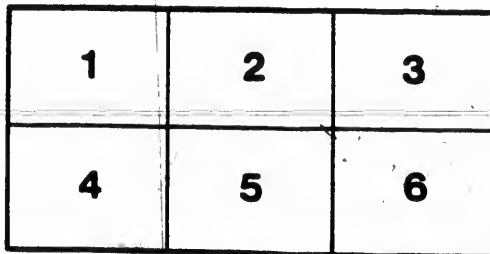
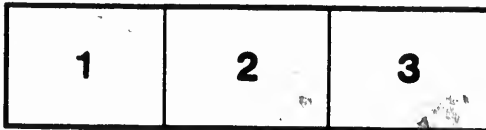
Library of the National  
Archives of Canada

The images appearing here are the best quality possible considering the condition and legibility of the original copy and in keeping with the filming contract specifications.

Original copies in printed paper covers are filmed beginning with the front cover and ending on the last page with a printed or illustrated impression, or the back cover when appropriate. All other original copies are filmed beginning on the first page with a printed or illustrated impression, and ending on the last page with a printed or illustrated impression.

The last recorded frame on each microfiche shall contain the symbol  $\rightarrow$  (meaning "CONTINUED"), or the symbol  $\nabla$  (meaning "END"), whichever applies.

Maps, plates, charts, etc., may be filmed at different reduction ratios. Those too large to be entirely included in one exposure are filmed beginning in the upper left hand corner, left to right and top to bottom, as many frames as required. The following diagrams illustrate the method:



L'exemplaire filmé fut reproduit grâce à la générosité de:

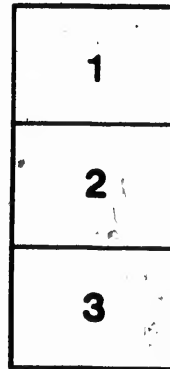
La bibliothèque des Archives  
nationales du Canada

Les images suivantes ont été reproduites avec le plus grand soin, compte tenu de la condition et de la netteté de l'exemplaire filmé, et en conformité avec les conditions du contrat de filmage.

Les exemplaires originaux dont la couverture en papier est imprimée sont filmés en commençant par le premier plat et en terminant soit par la dernière page qui comporte une empreinte d'impression ou d'illustration, soit par le second plat, selon le cas. Tous les autres exemplaires originaux sont filmés en commençant par la première page qui comporte une empreinte d'impression ou d'illustration et en terminant par la dernière page qui comporte une telle empreinte.

Un des symboles suivants apparaîtra sur la dernière image de chaque microfiche, selon le cas: le symbole  $\rightarrow$  signifie "A SUIVRE", le symbole  $\nabla$  signifie "FIN".

Les cartes, planches, tableaux, etc., peuvent être filmés à des taux de réduction différents. Lorsque le document est trop grand pour être reproduit en un seul cliché, il est filmé à partir de l'angle supérieur gauche, de gauche à droite, et de haut en bas, en prenant le nombre d'images nécessaire. Les diagrammes suivants illustrent la méthode.



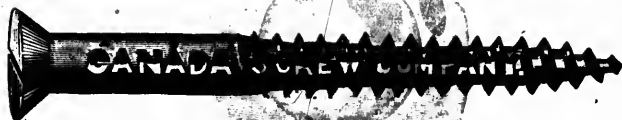
.....REVISED.....

PRICE & LIST

# Steel Wire Nails

SEPTEMBER 1st 1899.

(CANCELLING ALL PREVIOUS LISTS.)



## THE CANADA SCREW CO.

HEAD OFFICE:  
HAMILTON, ONT.

BRANCHES:

69 Bay Street, - - - Toronto, Ont.  
385 and 387 St. Paul St., Montreal, Q.

# STANDARD STEEL WIRE NAILS.

To Take Effect 1st Sept., 1899.

Standard Common Nails.				Moulding	Finishing and casing.	Flooring	Clinch Long Point	Clinch Flat Point	Slating and Roofing.	Box	Fence	Tobacco	Barrel	Oval Head Car	Eave Trough Spikes	Common Spikes
In Kegs 100 lbs. each.				STANDARD GAUGES.												
Size.	Length in Inches.	GAUGE.	Advance over Base Price.	Ge	Ge	Ge	Ge	Ge	Ge	Ge	Ge	Ge	Ge	Ge	Ge	Ge
2d	1	15	1.00	16	17	...	14	14	12	16	...	...	14	...	...	...
3d <sup>F</sup>	1 1/8	15		16	17	...	...	...	12	16	...	...	14	...	...	...
3d	1 1/4	14	.65	15	16	...	13	14	11	15	...	...	14	...	...	...
4d	1 1/2	13		14	15	...	12	13	11	14	...	12	...	14	...	...
5d	1 3/4	12	.40	13	14	...	12	13	10	14	10	12	...	12	...	...
6d	2	12		12	13	11	11	12	10	13	10	11	...	10	...	...
7d	2 1/4	11	.30	12	13	11	11	12	...	13	9	11	...	9	...	...
8d	2 1/2	10 1/2		11	12	10	10	11	...	12	9	10	...	9	...	...
9d	2 3/4	10	.15	11	12	10	10	10	...	11	8	...	...	8	...	...
10d	3	9		10	11	9	9	9	...	11	7	...	...	8	...	...
12d	3 1/4	9	.10	9	11	9	...	...	...	10	6	...	...	7	...	...
16d	3 1/2	7		8	10	8	...	...	...	10	5	...	...	7	...	...
20d	4	6	.05	...	9	7	...	...	...	9	4	...	...	6	...	3
30d	4 1/2	5		...	...	...	...	...	...	9	...	...	...	6	5	3
40d	5	4	Base.	...	...	...	...	...	...	8	...	...	...	5	4	2
50d	5 1/2	3		...	...	...	...	...	...	...	...	...	...	4	3	2
60d	6	2	.10	...	...	...	...	...	...	...	...	...	...	4	2	1
70d	7	2		...	...	...	...	...	...	...	...	...	...	...	...	...

Longer Lengths Special Extra.

Net Extras over same size Common Nails. (Per lb.)  
 1/4c 1/2c 3/4c 1/2c 3/4c 1/2c 1/4c 1/4c 1/4c 1/4c 1/4c 1/4c 1/4c 1/10"

## OTHER EXTRAS, NET.

- Barbing, Annealing, Special Heads, Special Points ..... 1/2 Ct. per lb. each, Net.
  - Packing in 25 and 50 lb. Boxes ..... 1/4 " " "
  - Blued Nails ..... 10 Cts. per 100 lbs.
  - Coated Nails ..... 10 " " "
  - Standard gauges in less than 25 lb. Boxes and in 1 lb. Papers sold on Miscellaneous List.
- Moulding, Finishing, Casing, Flooring, Clinch, Slating, Roofing, Box, Fence, Shingle, Tobacco, Barrel, Eave Trough Spikes and Car Nails of the Gauges named above will be charged at Common Nail List, with Extras as shewn.  
 All other Sizes and Gauges will be charged on the Miscellaneous List.

# Miscellaneous Wire Nail List,

Oct. 1st, 1897.

Applying to All Nails except Standard Nails.

Length	Gauge	Per lb	Length	Gauge	Per lb
¼ in.	No. 19 and heavier	65c	1¾ in.	No. 13 and heavier	19c
	" 20.	80		" 14	20
	" 21.	95		" 15	23
⅜ in.	" 19 and heavier	55	2 & 2¼ in.	" 12 and heavier	17
	" 20.	65		" 13	20
	" 21.	75		" 14	22
½ in.	" 18 and heavier	45	2½ & 2¾ in.	" 11 and heavier	17
	" 19	50		" 12	18
	" 20.	55		" 13	19
⅝ in.	" 18 and heavier	35	3 & 3¼ in.	" 10 and heavier	16
	" 19.	40		" 11	17
	" 20.	45		" 12	18
¾ in.	" 17 and heavier	30	3½ & 4 in.	" 9 and heavier	16
	" 18.	35		" 10	17
	" 19.	40		" 11	18
⅞ in.	" 16 and heavier	27	4½ in.	" 7 and heavier	15
	" 17.	30		" 8	16
	" 18.	35		" 9	17
1 & 1⅛	" 16 and heavier	26	5 in.	" 6 and heavier	15
	" 17.	28		" 7	16
	" 18.	30		" 8	17
1¼ & 1⅜ in.	" 15 and heavier	22	5½ in.	" 4 and heavier	14
	" 16	23		" 5	15
	" 17	25		" 6	16
1½ in.	" 14 and heavier	21	6 in. and longer	" 3 and heavier	14
	" 15	23		" 4	15
	" 16	25		" 5	16

Discount

Per Cent.

## NET EXTRAS.

Sash Pins or Headless Nails	½ cent per lb. extra, net.
Barbing, Annealing, Special Heads, Special Points	¼ "
Tinning, up to ¾ in	6 "
" ⅞ in. and longer	3 "
Galvanizing	3 "
Packing in 25 and 50 lb. Boxes	¼ "
Packing in less than 25 lbs. and in lb. papers	½ "
Blued Nails	10 cents per 100 lbs.
Coated Nails	10 "

In addition to these extras—Nails on above list in less than 100 lbs. of one size, 1c. per lb. Extra Net.

